

Data Path : Z:\pestpcbsrv\HPCHEM1\ECD_0\Data\P0011121\
 Data File : P0074499.D
 Signal(s) : Signal #1: ECD1A.CH Signal #2: ECD2B.CH
 Acq On : 11 Jan 2021 23:43
 Operator : AJ/MA
 Sample : AR1268ICC1000
 Misc :
 ALS Vial : 30 Sample Multiplier: 1

Instrument :
 ECD_0
 ClientSampleId :
 AR1268ICC1000

Integration File signal 1: autoint1.e
 Integration File signal 2: autoint2.e
 Quant Time: Jan 12 05:36:05 2021
 Quant Method : Z:\pestpcbsrv\HPCHEM1\ECD_0\methods\P0011121.M
 Quant Title : GC EXTRACTABLES
 QLast Update : Tue Jan 12 05:35:39 2021
 Response via : Initial Calibration
 Integrator: ChemStation 6890 Scale Mode: Small noise peaks clipped

Volume Inj. : 2 µl
 Signal #1 Phase : ZB-MR1 Signal #2 Phase: ZB-MR2
 Signal #1 Info : 30Mx0.32mmx 0.50µ Signal #2 Info : 30M x 0.32mm x 0.25µm

Compound	RT#1	RT#2	Resp#1	Resp#2	ng/ml	ng/ml

System Monitoring Compounds						
1) SA Tetrachlo...	4.932	4.008	10566397	5530933	96.788	95.420
2) SA Decachlor...	10.947	9.260	17373105	9562537	94.093	94.917
Target Compounds						
41) L9 AR-1268-1	9.446	8.187	17882883	10637364	955.619	954.450
42) L9 AR-1268-2	9.542	8.252	15187352	9097370	952.455	957.642
43) L9 AR-1268-3	9.767	8.457	13476277	7885568	953.343	954.744
44) L9 AR-1268-4	10.204	8.744	5642516	3282795	945.830	957.244
45) L9 AR-1268-5	10.616	9.021	40175356	22910813	958.220	964.115

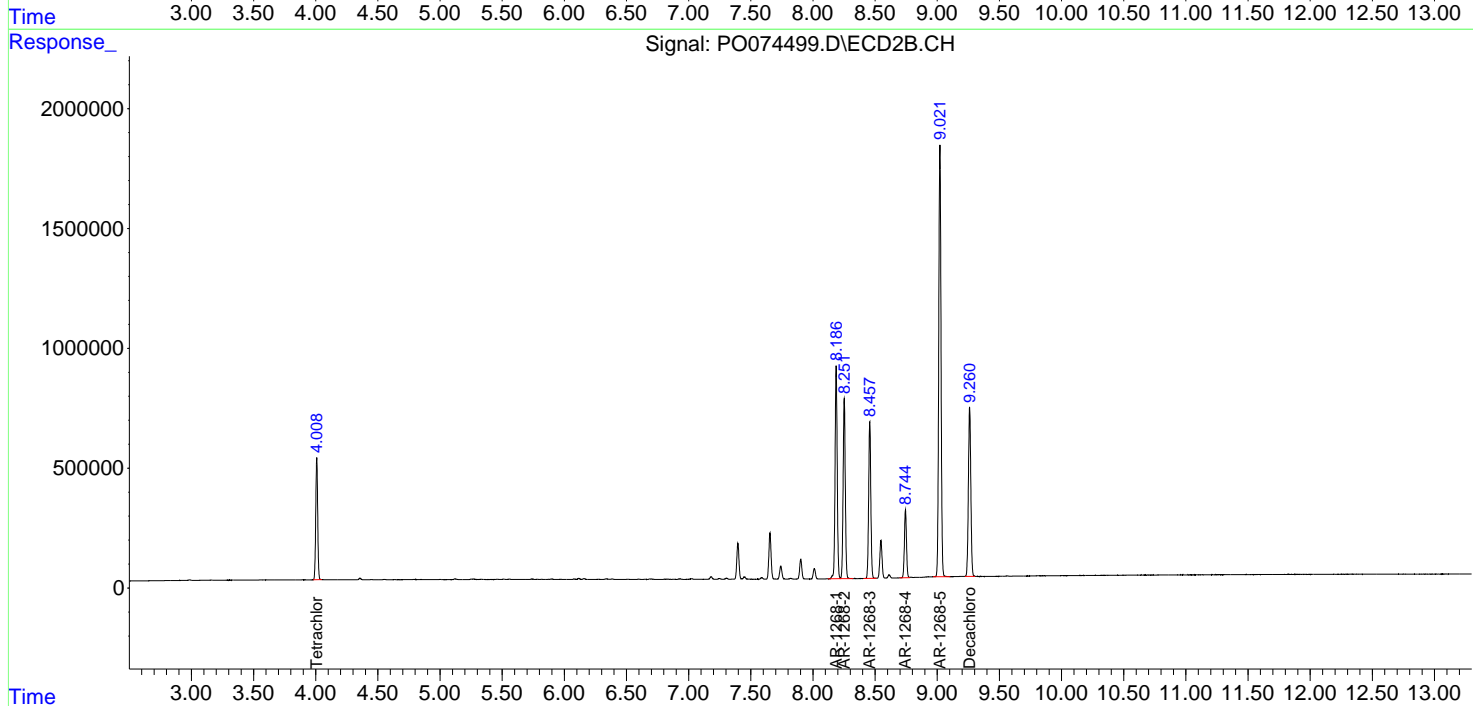
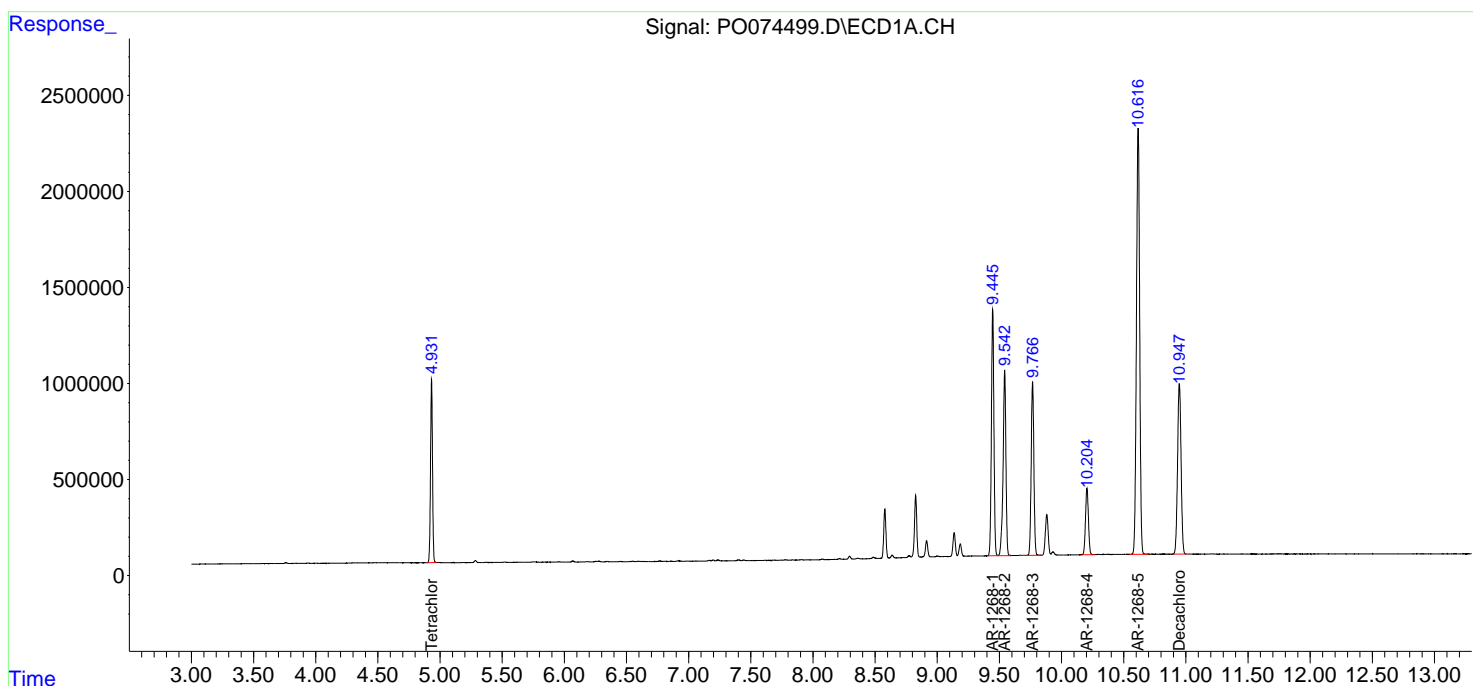
(f)=RT Delta > 1/2 Window (#)=Amounts differ by > 25% (m)=manual int.

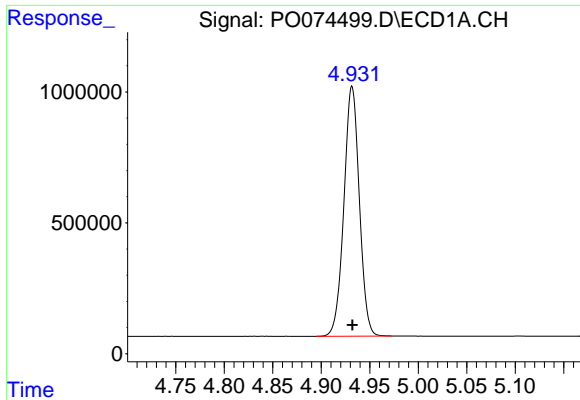
Data Path : Z:\pestpcbsrv\HPCHEM1\ECD_O\Data\P0011121\
 Data File : P0074499.D
 Signal(s) : Signal #1: ECD1A.CH Signal #2: ECD2B.CH
 Acq On : 11 Jan 2021 23:43
 Operator : AJ/MA
 Sample : AR1268ICC1000
 Misc :
 ALS Vial : 30 Sample Multiplier: 1

Instrument :
 ECD_O
 ClientSampled :
 AR1268ICC1000

Integration File signal 1: autoint1.e
 Integration File signal 2: autoint2.e
 Quant Time: Jan 12 05:36:05 2021
 Quant Method : Z:\pestpcbsrv\HPCHEM1\ECD_O\methods\P0011121.M
 Quant Title : GC EXTRACTABLES
 QLast Update : Tue Jan 12 05:35:39 2021
 Response via : Initial Calibration
 Integrator: ChemStation 6890 Scale Mode: Small noise peaks clipped

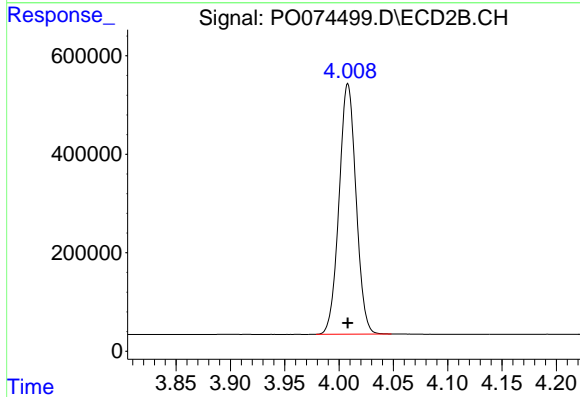
Volume Inj. : 2 µl
 Signal #1 Phase : ZB-MR1 Signal #2 Phase: ZB-MR2
 Signal #1 Info : 30Mx0.32mmx 0.50µ Signal #2 Info : 30M x 0.32mm x 0.25µm



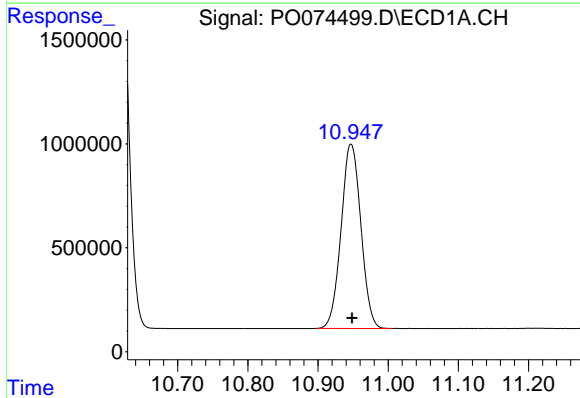


#1 Tetrachloro-m-xylene
 R.T.: 4.932 min
 Delta R.T.: 0.000 min
 Response: 10566397
 Conc: 96.79 ng/ml

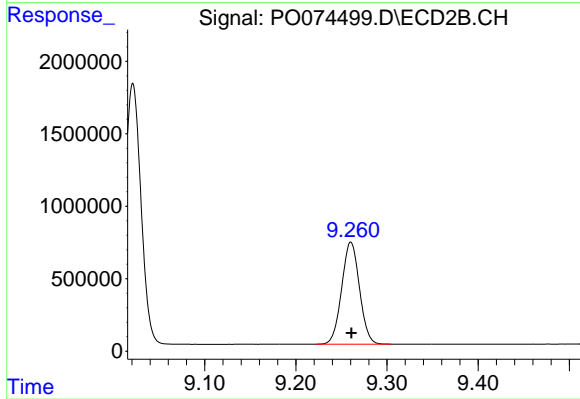
Instrument :
 ECD_O
 ClientSampleId :
 AR1268ICC1000



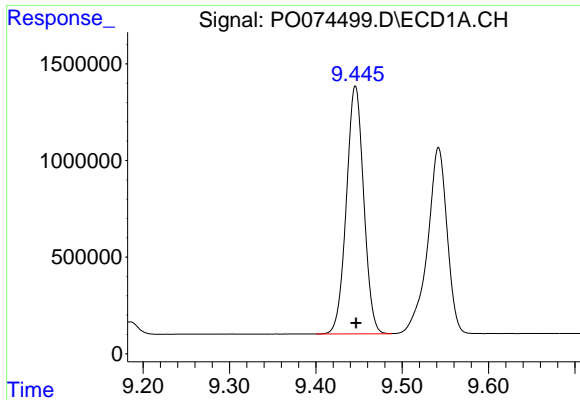
#1 Tetrachloro-m-xylene
 R.T.: 4.008 min
 Delta R.T.: 0.000 min
 Response: 5530933
 Conc: 95.42 ng/ml



#2 Decachlorobiphenyl
 R.T.: 10.947 min
 Delta R.T.: -0.002 min
 Response: 17373105
 Conc: 94.09 ng/ml



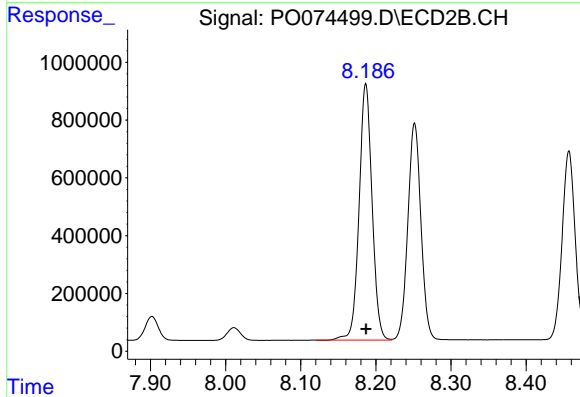
#2 Decachlorobiphenyl
 R.T.: 9.260 min
 Delta R.T.: 0.000 min
 Response: 9562537
 Conc: 94.92 ng/ml



#41 AR-1268-1

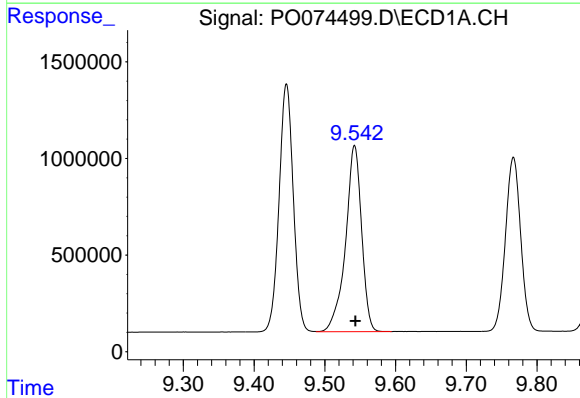
R.T.: 9.446 min
 Delta R.T.: 0.000 min
 Response: 17882883
 Conc: 955.62 ng/ml

Instrument :
 ECD_O
 ClientSampleId :
 AR1268ICC1000



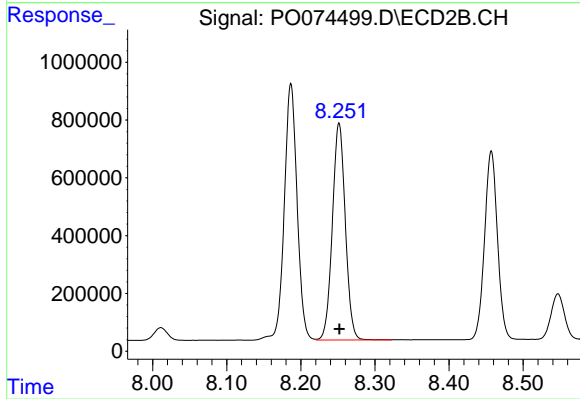
#41 AR-1268-1

R.T.: 8.187 min
 Delta R.T.: 0.000 min
 Response: 10637364
 Conc: 954.45 ng/ml



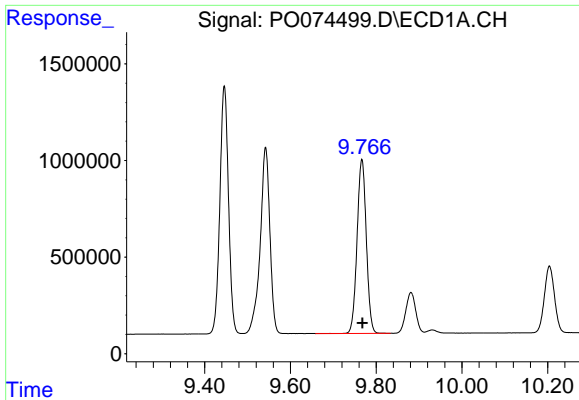
#42 AR-1268-2

R.T.: 9.542 min
 Delta R.T.: -0.001 min
 Response: 15187352
 Conc: 952.46 ng/ml



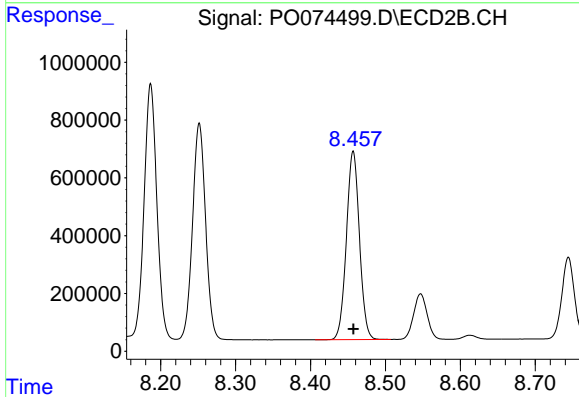
#42 AR-1268-2

R.T.: 8.252 min
 Delta R.T.: 0.000 min
 Response: 9097370
 Conc: 957.64 ng/ml

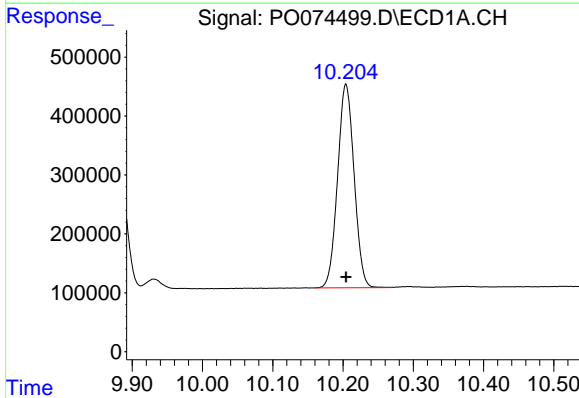


#43 AR-1268-3
 R.T.: 9.767 min
 Delta R.T.: 0.000 min
 Response: 13476277
 Conc: 953.34 ng/ml

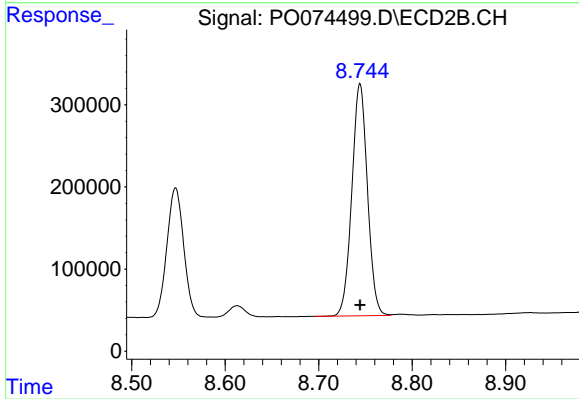
Instrument :
 ECD_O
ClientSampleId :
 AR1268ICC1000



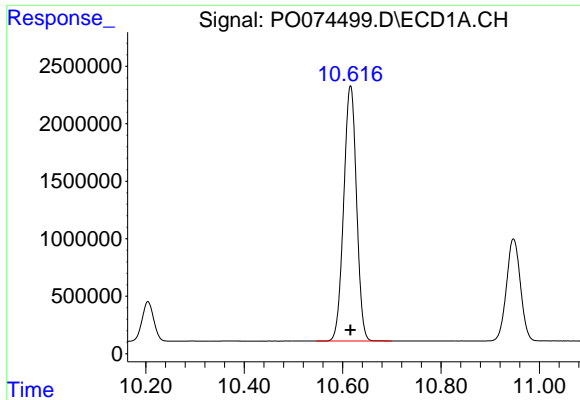
#43 AR-1268-3
 R.T.: 8.457 min
 Delta R.T.: 0.000 min
 Response: 7885568
 Conc: 954.74 ng/ml



#44 AR-1268-4
 R.T.: 10.204 min
 Delta R.T.: 0.000 min
 Response: 5642516
 Conc: 945.83 ng/ml



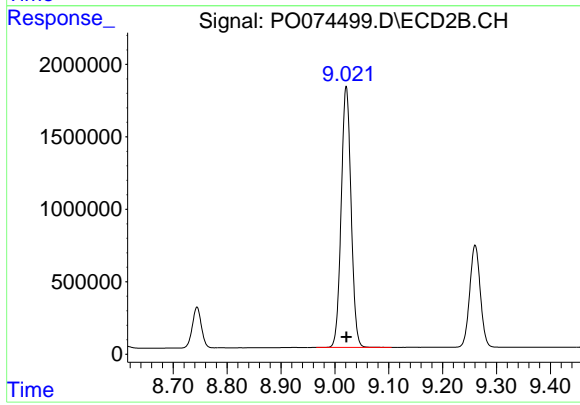
#44 AR-1268-4
 R.T.: 8.744 min
 Delta R.T.: 0.000 min
 Response: 3282795
 Conc: 957.24 ng/ml



#45 AR-1268-5

R.T.: 10.616 min
Delta R.T.: 0.000 min
Response: 40175356
Conc: 958.22 ng/ml

Instrument :
ECD_O
ClientSampled :
AR1268ICC1000



#45 AR-1268-5

R.T.: 9.021 min
Delta R.T.: 0.000 min
Response: 22910813
Conc: 964.11 ng/ml