

Data Path : Z:\pestpcbsrv\HPCHEM1\ECD\_0\Data\P0011221\  
 Data File : P0074534.D  
 Signal(s) : Signal #1: ECD1A.CH Signal #2: ECD2B.CH  
 Acq On : 12 Jan 2021 16:24  
 Operator : AJ/MA  
 Sample : M1081-09  
 Misc :  
 ALS Vial : 20 Sample Multiplier: 1

Instrument :  
 ECD\_0  
 ClientSampleId :  
 DUP

Integration File signal 1: autoint1.e  
 Integration File signal 2: autoint2.e  
 Quant Time: Jan 12 17:06:15 2021  
 Quant Method : Z:\pestpcbsrv\HPCHEM1\ECD\_0\methods\P0011221.M  
 Quant Title : GC EXTRACTABLES  
 QLast Update : Tue Jan 12 06:02:45 2021  
 Response via : Initial Calibration  
 Integrator: ChemStation 6890 Scale Mode: Small noise peaks clipped

Volume Inj. : 2 µl  
 Signal #1 Phase : ZB-MR1 Signal #2 Phase: ZB-MR2  
 Signal #1 Info : 30Mx0.32mmx 0.50µ Signal #2 Info : 30M x 0.32mm x 0.25µm

Compound	RT#1	RT#2	Resp#1	Resp#2	ng/ml	ng/ml
-----						
System Monitoring Compounds						
1) SA Tetrachlo...	4.932	4.006	2248969	1188671	21.314	21.131
2) SA Decachlor...	10.949	9.260	2082364	1090299	20.517	19.858

Target Compounds

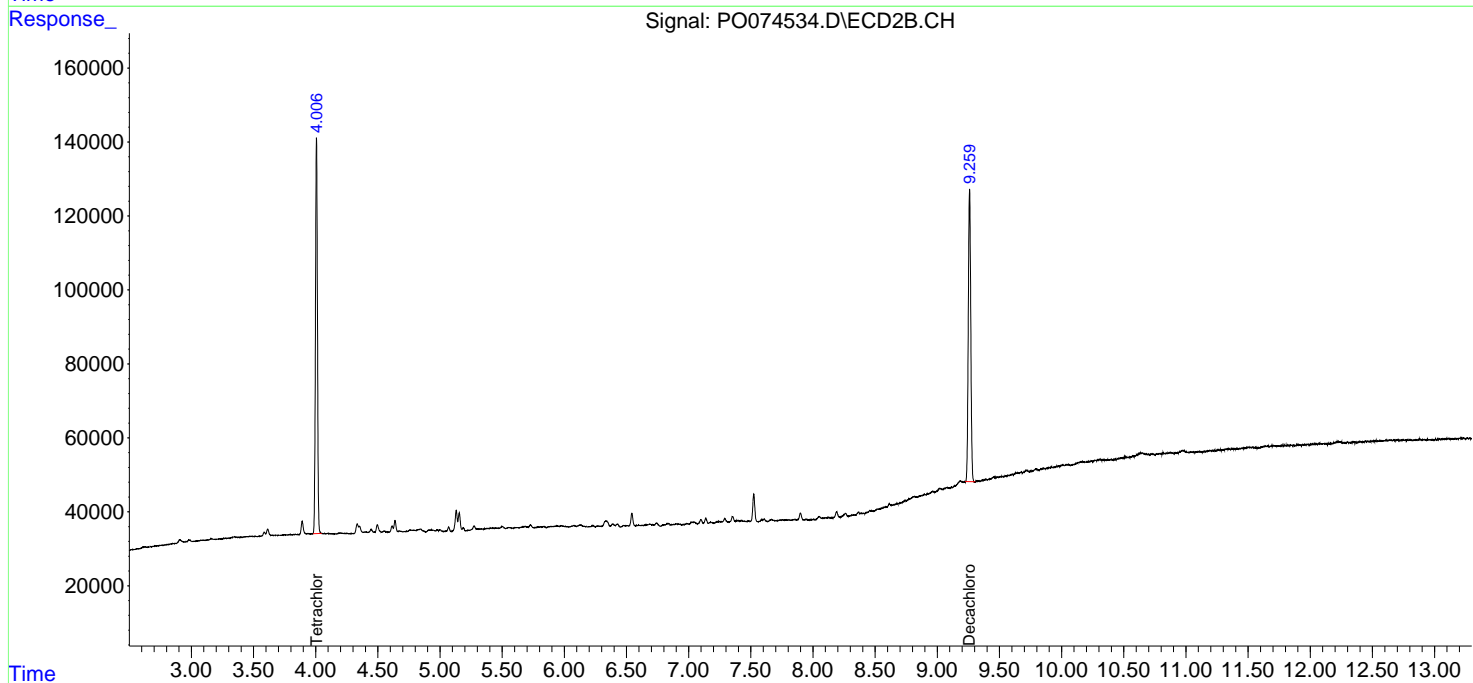
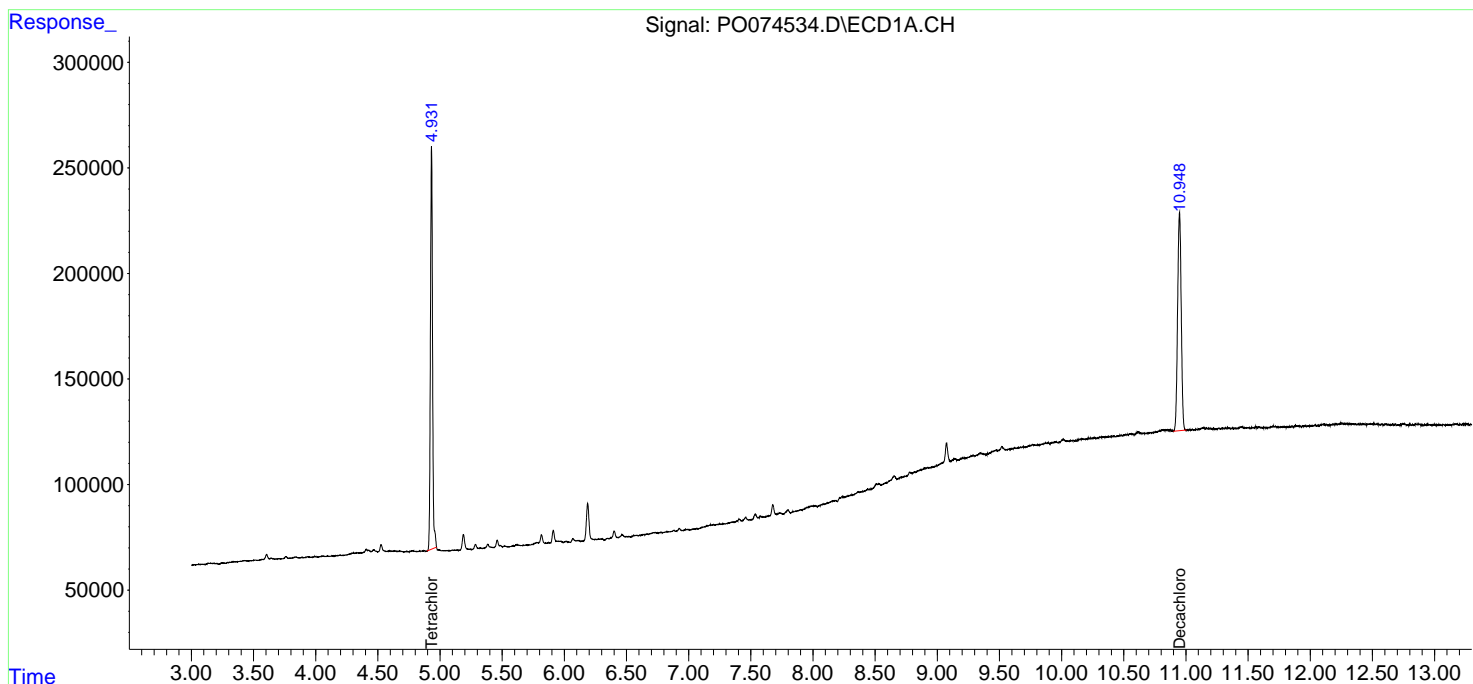
(f)=RT Delta > 1/2 Window (#)=Amounts differ by > 25% (m)=manual int.

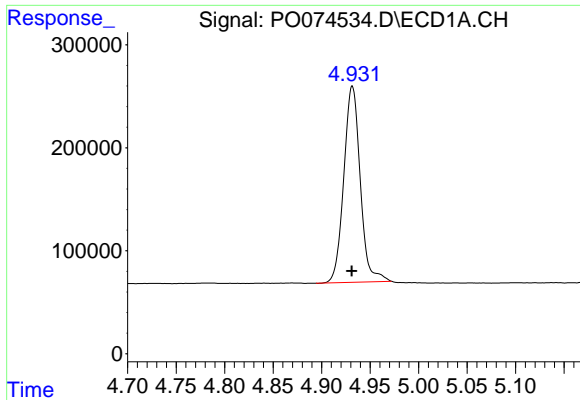
Data Path : Z:\pestpcbsrv\HPCHEM1\ECD\_0\Data\P0011221\  
 Data File : P0074534.D  
 Signal(s) : Signal #1: ECD1A.CH Signal #2: ECD2B.CH  
 Acq On : 12 Jan 2021 16:24  
 Operator : AJ/MA  
 Sample : M1081-09  
 Misc :  
 ALS Vial : 20 Sample Multiplier: 1

Instrument :  
 ECD\_O  
 ClientSampled :  
 DUP

Integration File signal 1: autoint1.e  
 Integration File signal 2: autoint2.e  
 Quant Time: Jan 12 17:06:15 2021  
 Quant Method : Z:\pestpcbsrv\HPCHEM1\ECD\_0\methods\P001121.M  
 Quant Title : GC EXTRACTABLES  
 QLast Update : Tue Jan 12 06:02:45 2021  
 Response via : Initial Calibration  
 Integrator: ChemStation 6890 Scale Mode: Small noise peaks clipped

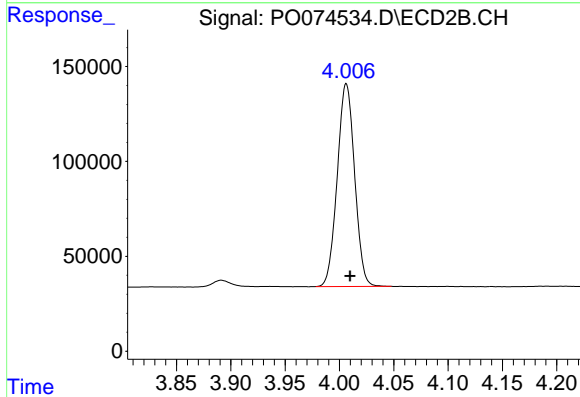
Volume Inj. : 2 µl  
 Signal #1 Phase : ZB-MR1 Signal #2 Phase: ZB-MR2  
 Signal #1 Info : 30Mx0.32mmx 0.50µ Signal #2 Info : 30M x 0.32mm x 0.25µm



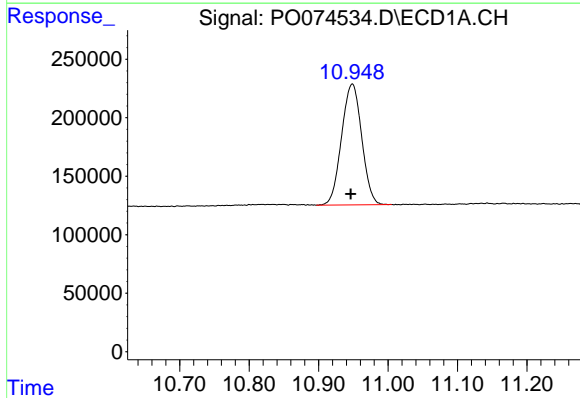


#1 Tetrachloro-m-xylene  
 R.T.: 4.932 min  
 Delta R.T.: 0.000 min  
 Response: 2248969  
 Conc: 21.31 ng/ml

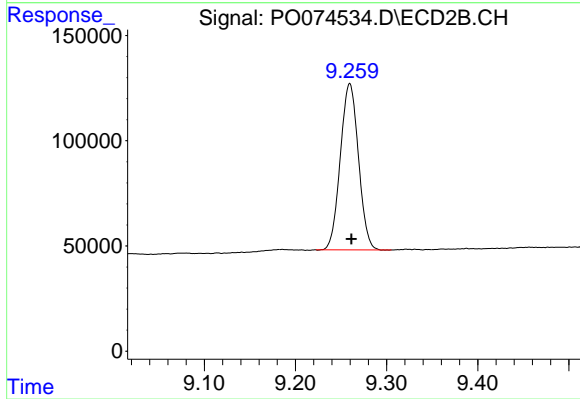
Instrument :  
 ECD\_O  
 ClientSampled :  
 DUP



#1 Tetrachloro-m-xylene  
 R.T.: 4.006 min  
 Delta R.T.: -0.003 min  
 Response: 1188671  
 Conc: 21.13 ng/ml



#2 Decachlorobiphenyl  
 R.T.: 10.949 min  
 Delta R.T.: 0.002 min  
 Response: 2082364  
 Conc: 20.52 ng/ml



#2 Decachlorobiphenyl  
 R.T.: 9.260 min  
 Delta R.T.: -0.002 min  
 Response: 1090299  
 Conc: 19.86 ng/ml