

Data Path : Z:\pestpcbsrv\HPCHEM1\ECD_0\Data\P0011223\
 Data File : P0091969.D
 Signal(s) : Signal #1: ECD1A.ch Signal #2: ECD2B.ch
 Acq On : 12 Jan 2023 10:50
 Operator : YP/AJ
 Sample : PB150176BL
 Misc :
 ALS Vial : 8 Sample Multiplier: 1

Instrument :
 ECD_0
 ClientSampleId :

Integration File signal 1: autoint1.e
 Integration File signal 2: autoint2.e
 Quant Time: Jan 12 20:25:58 2023
 Quant Method : Z:\pestpcbsrv\HPCHEM1\ECD_0\methods\P0011023.M
 Quant Title : GC EXTRACTABLES
 QLast Update : Wed Jan 11 04:41:00 2023
 Response via : Initial Calibration
 Integrator: ChemStation

Volume Inj. : 2 µl
 Signal #1 Phase : ZB-MR2 Signal #2 Phase: ZB-MR2
 Signal #1 Info : 30Mx0.32mmx 0.50µ Signal #2 Info : 30M x 0.32mm x 0.25µm

Compound	RT#1	RT#2	Resp#1	Resp#2	ng/ml	ng/ml

System Monitoring Compounds						
1) SA Tetrachlo...	4.444	3.648	62361628	29468859	22.358	21.226
2) SA Decachlor...	10.349	8.701	49236442	24242268	25.150	27.340
Target Compounds						
3) L1 AR-1016-1	5.563f	0.000	3833886	0	45.108	N.D. #
7) L1 AR-1016-5	0.000	5.244f	0	5363772	N.D.	145.540 #
8) L2 AR-1221-1	4.652	0.000	1219953	0	34.523	N.D. #
9) L2 AR-1221-2	4.752	3.947	786691	603248	30.973	46.186 #
10) L2 AR-1221-3	4.752f	0.000	786691	0	10.137	N.D. #
11) L3 AR-1232-1	4.752f	0.000	786691	0	11.740	N.D. #
14) L3 AR-1232-4	0.000	5.077f	0	6139222	N.D.	407.474 #
15) L3 AR-1232-5	0.000	5.244f	0	5363772	N.D.	327.995 #
16) L4 AR-1242-1	5.563f	0.000	3833886	0	53.727	N.D. #
19) L4 AR-1242-4	0.000	5.077f	0	6139222	N.D.	199.721 #
20) L4 AR-1242-5	6.501f	5.570	4256325	3903371	84.066	118.361 #
21) L5 AR-1248-1	5.563f	0.000	3833886	0	70.050	N.D. #
23) L5 AR-1248-3	0.000	5.077f	0	6139222	N.D.	134.755 #
24) L5 AR-1248-4	6.501	5.244f	4256325	5363772	47.851	102.869 #
25) L5 AR-1248-5	6.501f	5.570	4256325	3903371	49.200	88.255 #
26) L6 AR-1254-1	6.501	5.570	4256325	3903371	41.139	52.870 #
28) L6 AR-1254-3	7.090	0.000	12811533	0	85.676	N.D. #
29) L6 AR-1254-4	7.323f	6.400f	11917132	26389009	125.387	544.492 #
30) L6 AR-1254-5	7.776f	0.000	1042373	0	8.403	N.D. #
31) L7 AR-1260-1	7.225f	0.000	6892835	0	57.409	N.D. #
32) L7 AR-1260-2	7.465f	6.400	19529429	26389009	152.027	360.263 #
33) L7 AR-1260-3	0.000	6.588	0	687673	N.D.	9.615 #
34) L7 AR-1260-4	8.082f	0.000	748008	0	6.479	N.D. #
38) L8 AR-1262-3	0.000	7.594	0	7078937	N.D.	158.309 #
39) L8 AR-1262-4	0.000	7.594f	0	7078937	N.D.	85.250 #
41) L9 AR-1268-1	0.000	7.594	0	7078937	N.D.	46.445 #
42) L9 AR-1268-2	0.000	7.594f	0	7078937	N.D.	51.726 #
45) L9 AR-1268-5	0.000	8.437	0	5975889	N.D.	16.030 #

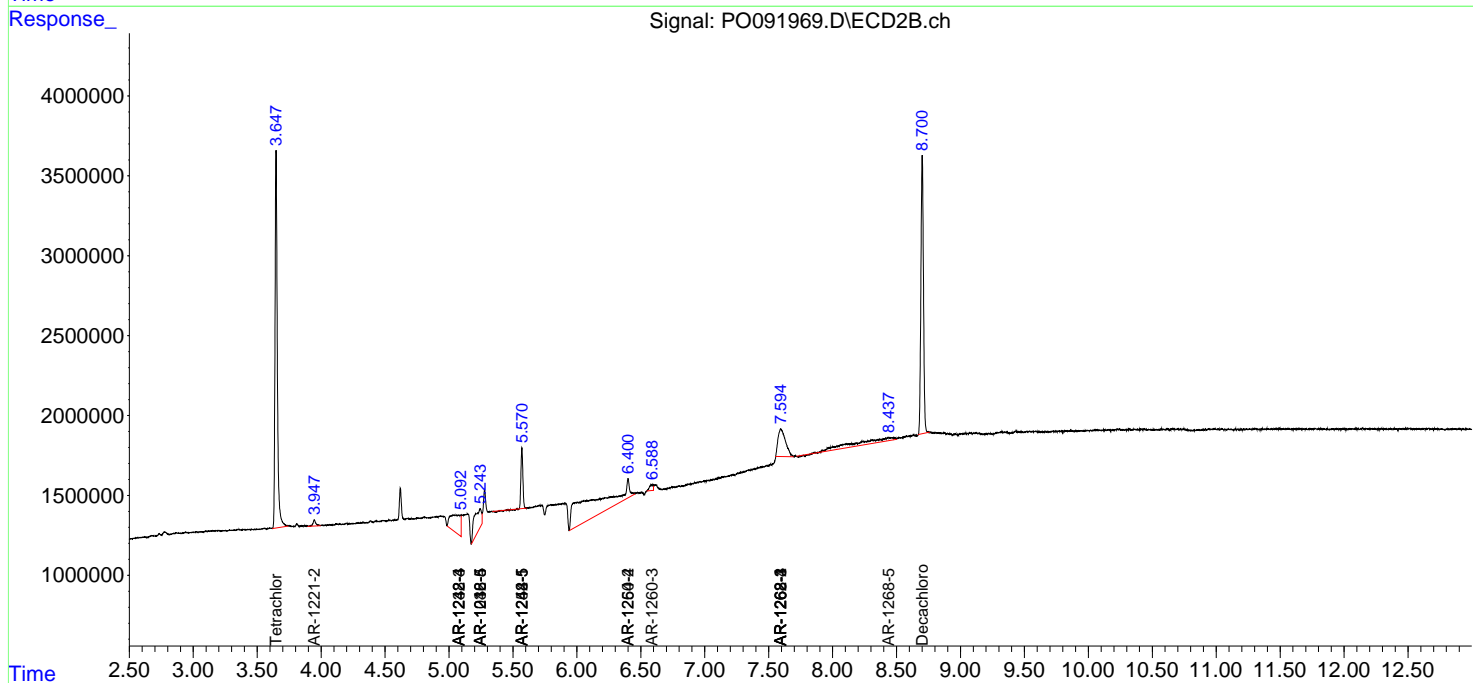
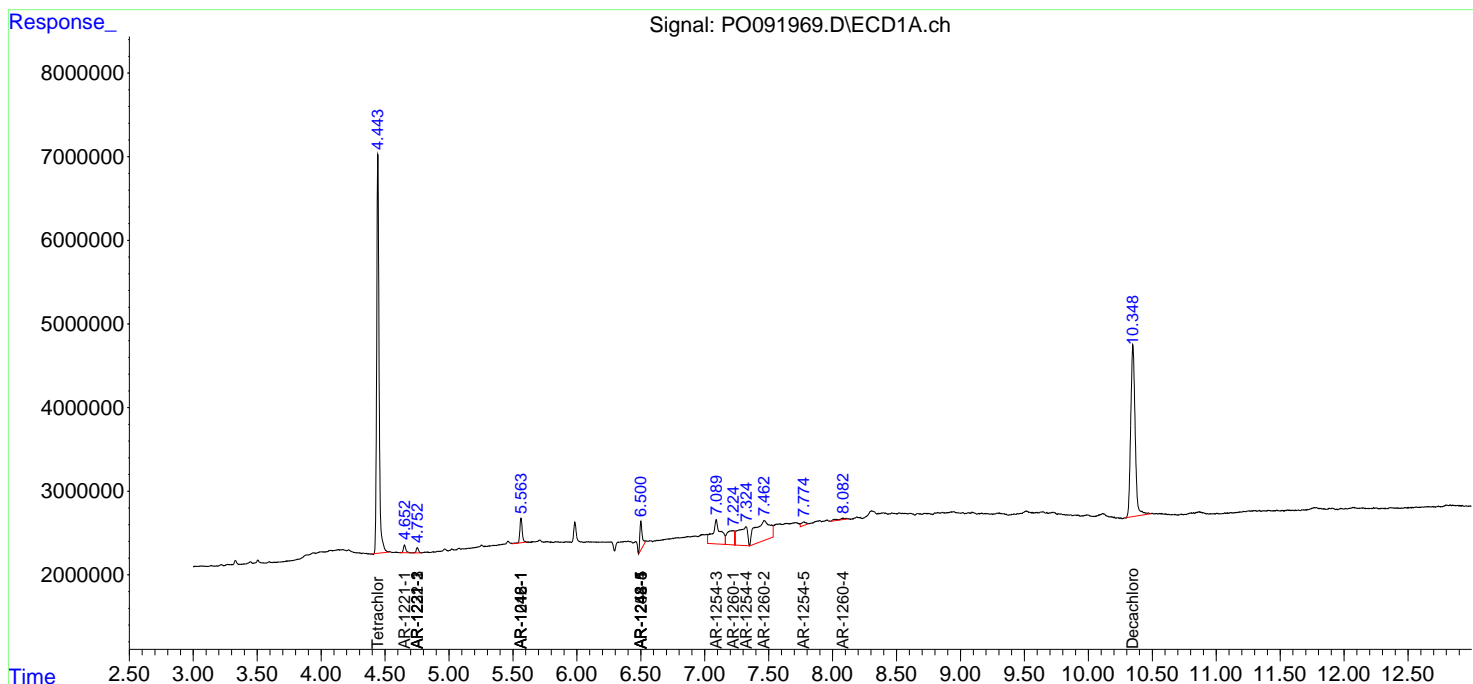
(f)=RT Delta > 1/2 Window (#)=Amounts differ by > 25% (m)=manual int.

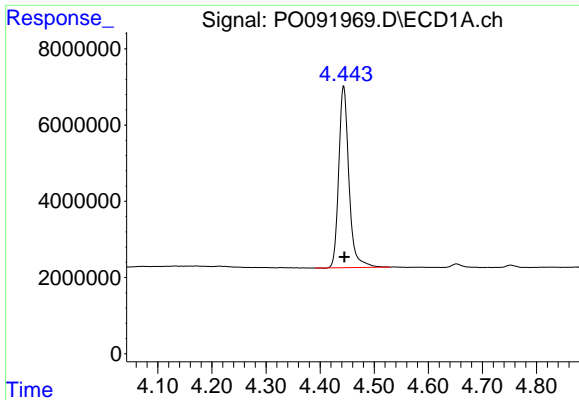
Data Path : Z:\pestpcbsrv\HPCHEM1\ECD_O\Data\P0011223\
 Data File : P0091969.D
 Signal(s) : Signal #1: ECD1A.ch Signal #2: ECD2B.ch
 Acq On : 12 Jan 2023 10:50
 Operator : YP/AJ
 Sample : PB150176BL
 Misc :
 ALS Vial : 8 Sample Multiplier: 1

Instrument :
 ECD_O
 ClientSampleId :

Integration File signal 1: autoint1.e
 Integration File signal 2: autoint2.e
 Quant Time: Jan 12 20:25:58 2023
 Quant Method : Z:\pestpcbsrv\HPCHEM1\ECD_O\methods\P0011023.M
 Quant Title : GC EXTRACTABLES
 QLast Update : Wed Jan 11 04:41:00 2023
 Response via : Initial Calibration
 Integrator: ChemStation

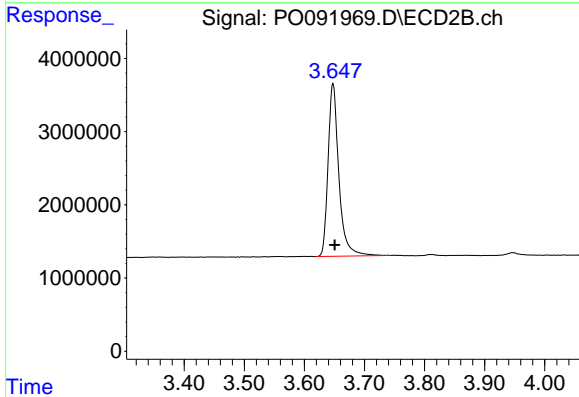
Volume Inj. : 2 µl
 Signal #1 Phase : ZB-MR1 Signal #2 Phase: ZB-MR2
 Signal #1 Info : 30Mx0.32mmx 0.50µ Signal #2 Info : 30M x 0.32mm x 0.25µm



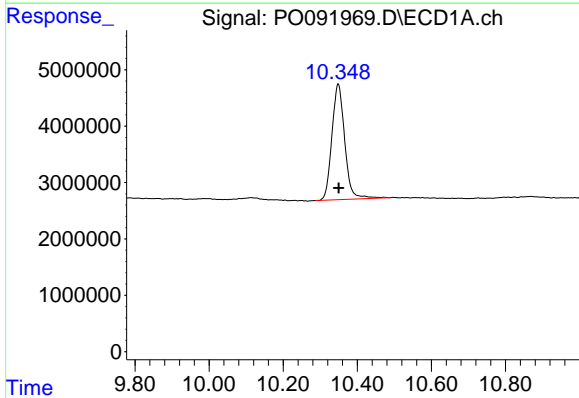


#1 Tetrachloro-m-xylene
 R.T.: 4.444 min
 Delta R.T.: -0.001 min
 Response: 62361628
 Conc: 22.36 ng/ml

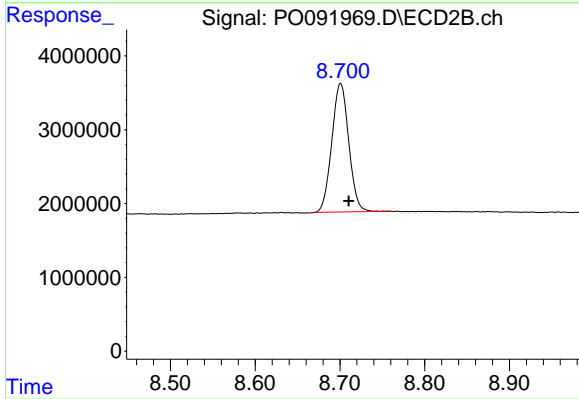
Instrument :
 ECD_O
 ClientSampleId :



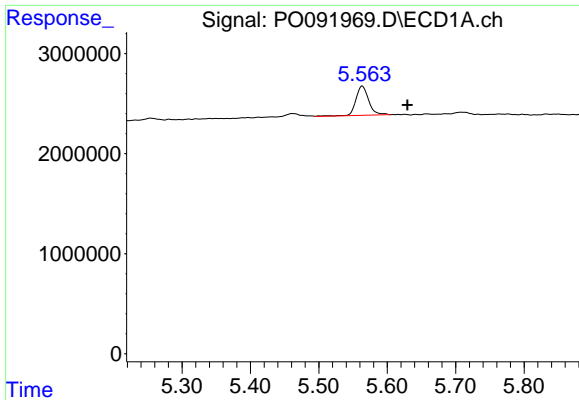
#1 Tetrachloro-m-xylene
 R.T.: 3.648 min
 Delta R.T.: -0.003 min
 Response: 29468859
 Conc: 21.23 ng/ml



#2 Decachlorobiphenyl
 R.T.: 10.349 min
 Delta R.T.: 0.000 min
 Response: 49236442
 Conc: 25.15 ng/ml



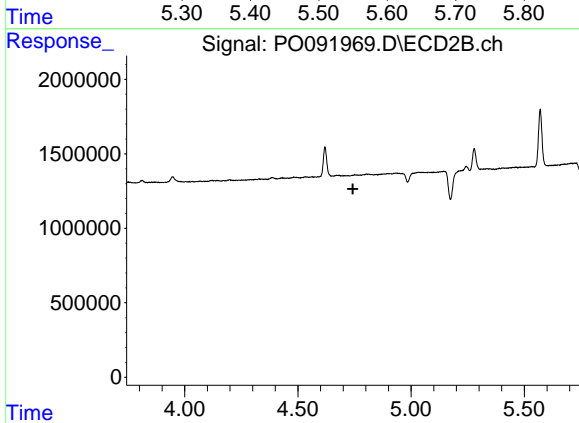
#2 Decachlorobiphenyl
 R.T.: 8.701 min
 Delta R.T.: -0.010 min
 Response: 24242268
 Conc: 27.34 ng/ml



#3 AR-1016-1

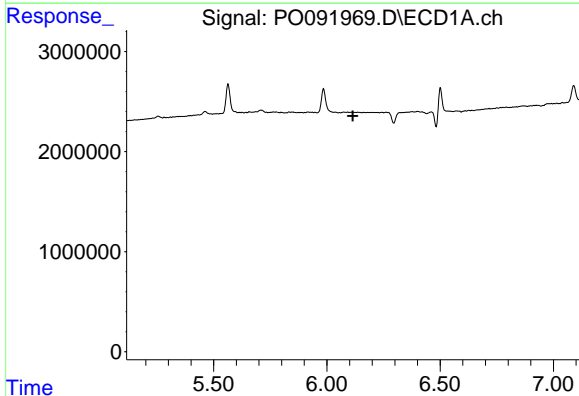
R.T.: 5.563 min
 Delta R.T.: -0.066 min
 Response: 3833886
 Conc: 45.11 ng/ml

Instrument :
 ECD_O
 ClientSampleId :



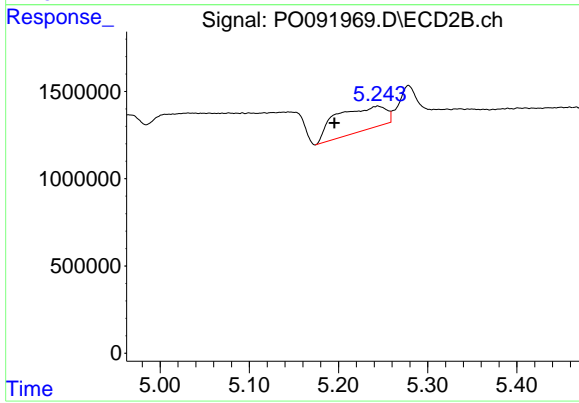
#3 AR-1016-1

R.T.: 0.000 min
 Exp R.T. : 4.743 min
 Response: 0
 Conc: N.D.



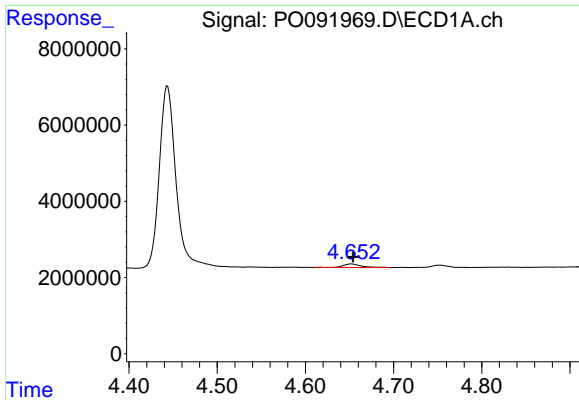
#7 AR-1016-5

R.T.: 0.000 min
 Exp R.T. : 6.115 min
 Response: 0
 Conc: N.D.



#7 AR-1016-5

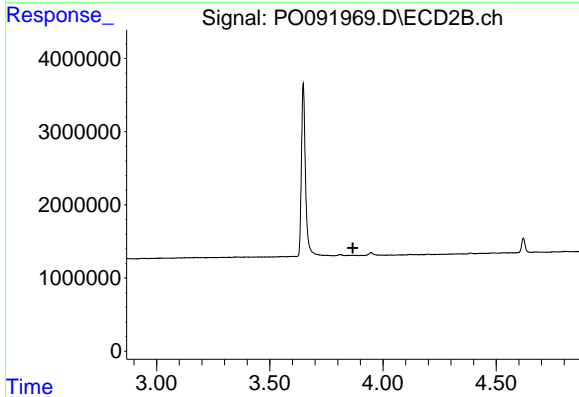
R.T.: 5.244 min
 Delta R.T.: 0.048 min
 Response: 5363772
 Conc: 145.54 ng/ml



#8 AR-1221-1

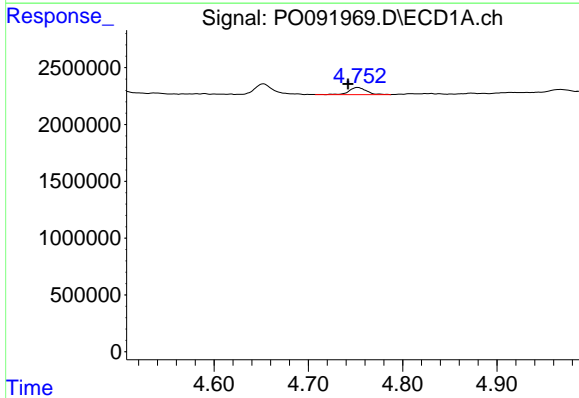
R.T.: 4.652 min
 Delta R.T.: -0.002 min
 Response: 1219953
 Conc: 34.52 ng/ml

Instrument :
 ECD_O
 ClientSampleId :



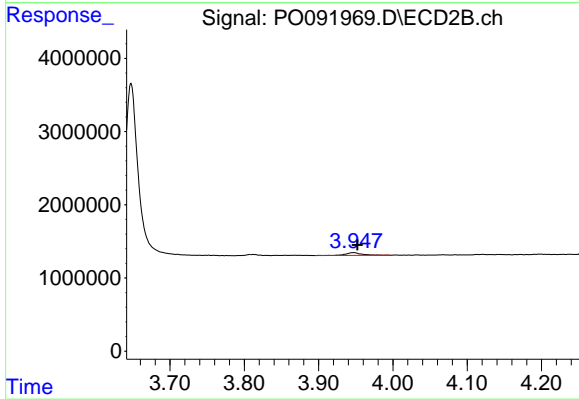
#8 AR-1221-1

R.T.: 0.000 min
 Exp R.T. : 3.867 min
 Response: 0
 Conc: N.D.



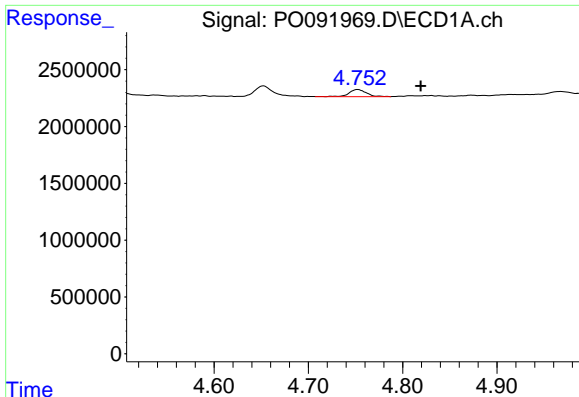
#9 AR-1221-2

R.T.: 4.752 min
 Delta R.T.: 0.010 min
 Response: 786691
 Conc: 30.97 ng/ml



#9 AR-1221-2

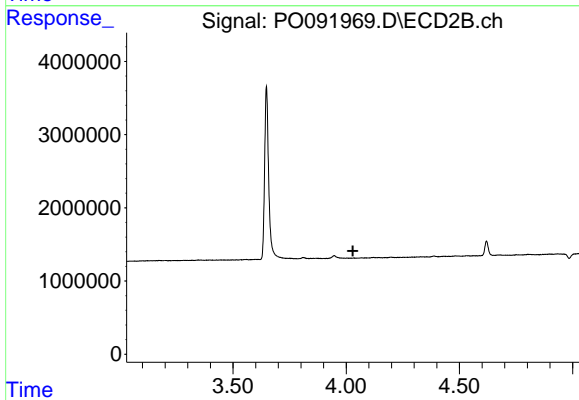
R.T.: 3.947 min
 Delta R.T.: -0.005 min
 Response: 603248
 Conc: 46.19 ng/ml



#10 AR-1221-3

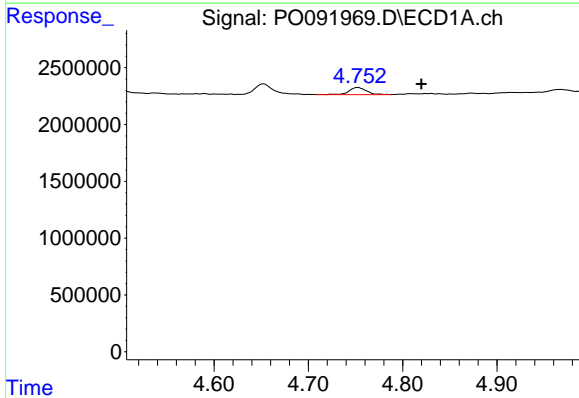
R.T.: 4.752 min
 Delta R.T.: -0.067 min
 Response: 786691
 Conc: 10.14 ng/ml

Instrument :
 ECD_O
 ClientSampleId :



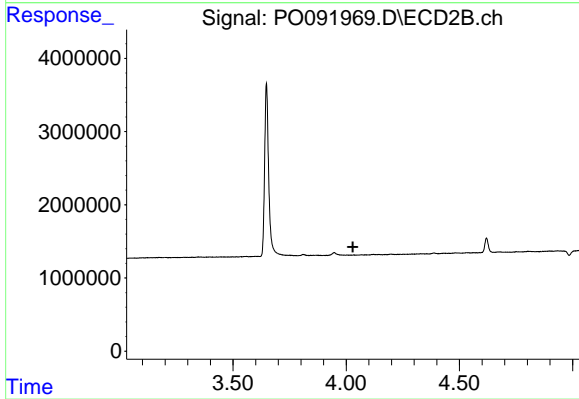
#10 AR-1221-3

R.T.: 0.000 min
 Exp R.T. : 4.029 min
 Response: 0
 Conc: N.D.



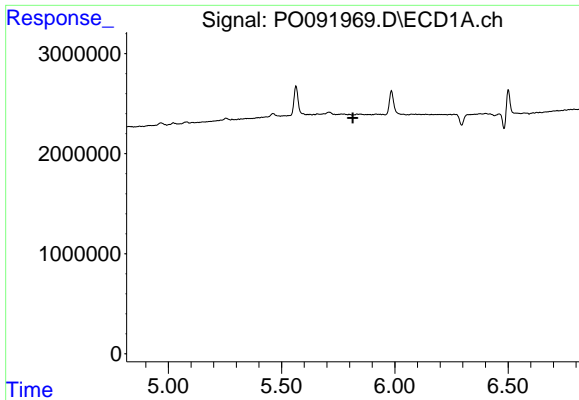
#11 AR-1232-1

R.T.: 4.752 min
 Delta R.T.: -0.068 min
 Response: 786691
 Conc: 11.74 ng/ml



#11 AR-1232-1

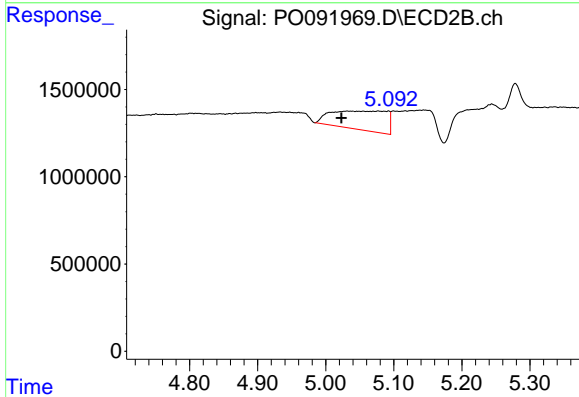
R.T.: 0.000 min
 Exp R.T. : 4.030 min
 Response: 0
 Conc: N.D.



#14 AR-1232-4

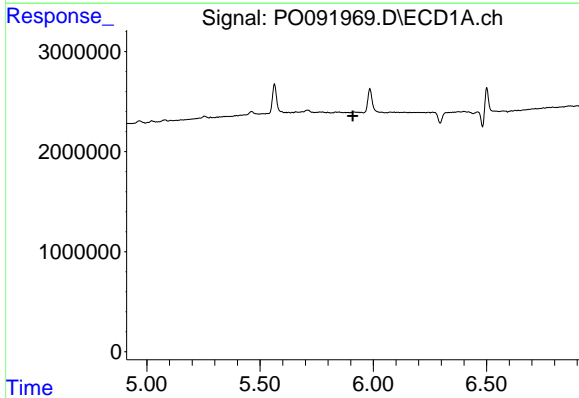
R.T.: 0.000 min
 Exp R.T. : 5.814 min
 Response: 0
 Conc: N.D.

Instrument :
 ECD_O
 ClientSampleId :



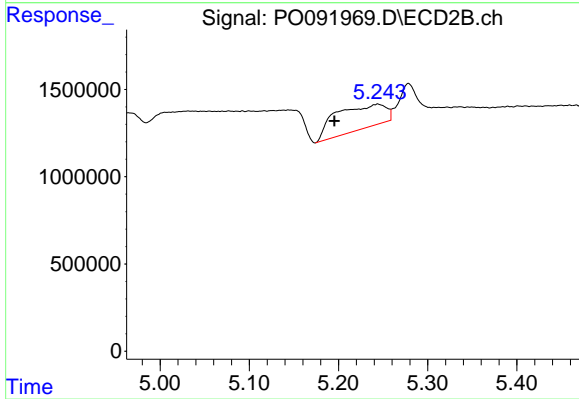
#14 AR-1232-4

R.T.: 5.077 min
 Delta R.T.: 0.054 min
 Response: 6139222
 Conc: 407.47 ng/ml



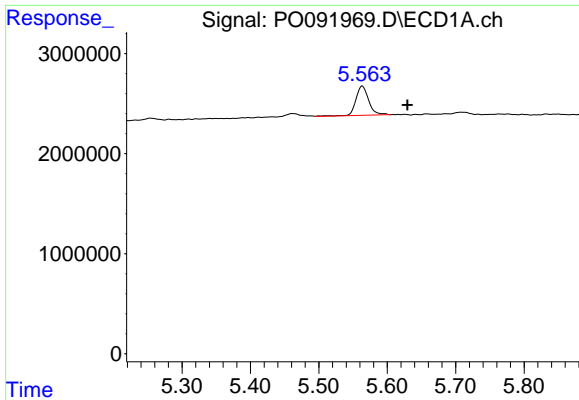
#15 AR-1232-5

R.T.: 0.000 min
 Exp R.T. : 5.909 min
 Response: 0
 Conc: N.D.



#15 AR-1232-5

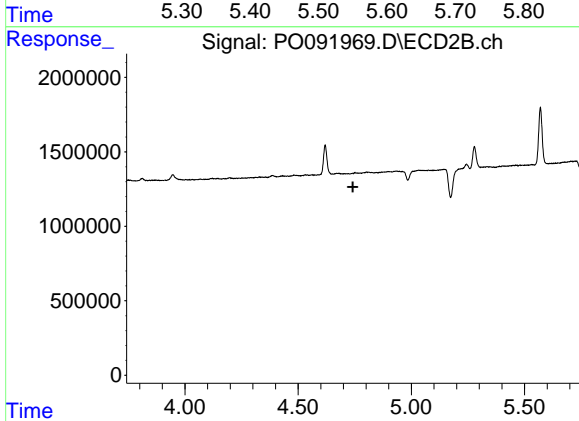
R.T.: 5.244 min
 Delta R.T.: 0.048 min
 Response: 5363772
 Conc: 327.99 ng/ml



#16 AR-1242-1

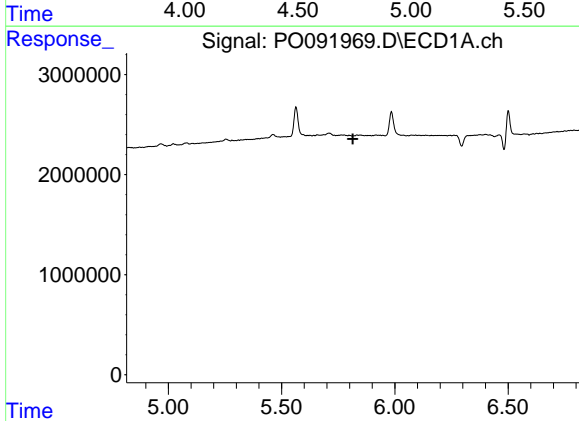
R.T.: 5.563 min
 Delta R.T.: -0.066 min
 Response: 3833886
 Conc: 53.73 ng/ml

Instrument :
 ECD_O
 ClientSampleId :



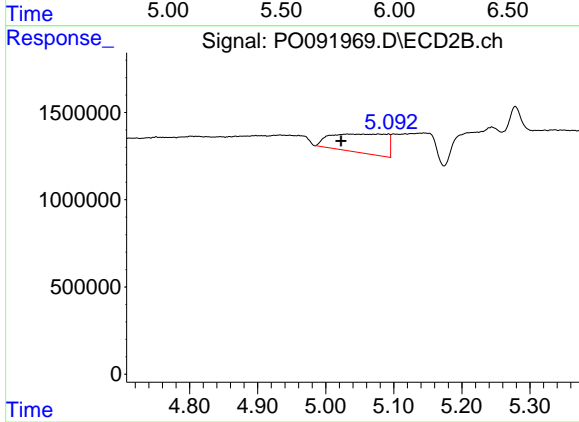
#16 AR-1242-1

R.T.: 0.000 min
 Exp R.T. : 4.742 min
 Response: 0
 Conc: N.D.



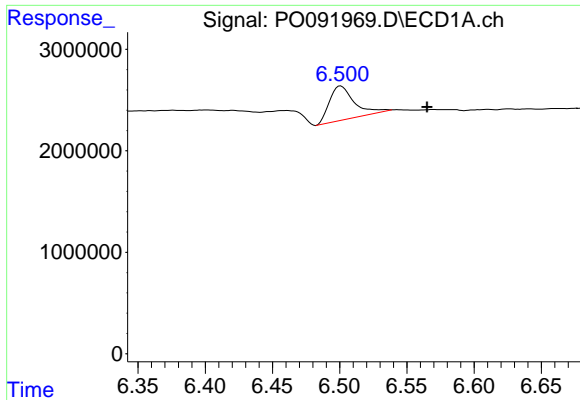
#19 AR-1242-4

R.T.: 0.000 min
 Exp R.T. : 5.814 min
 Response: 0
 Conc: N.D.



#19 AR-1242-4

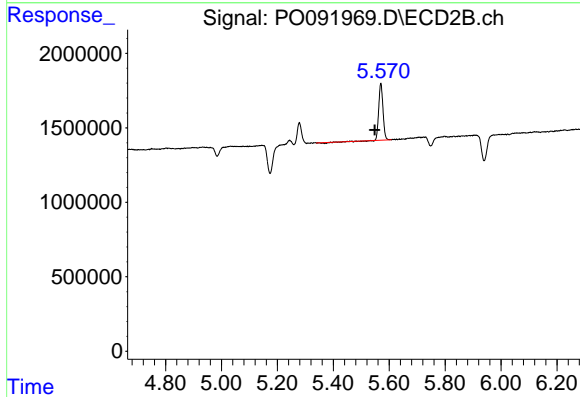
R.T.: 5.077 min
 Delta R.T.: 0.055 min
 Response: 6139222
 Conc: 199.72 ng/ml



#20 AR-1242-5

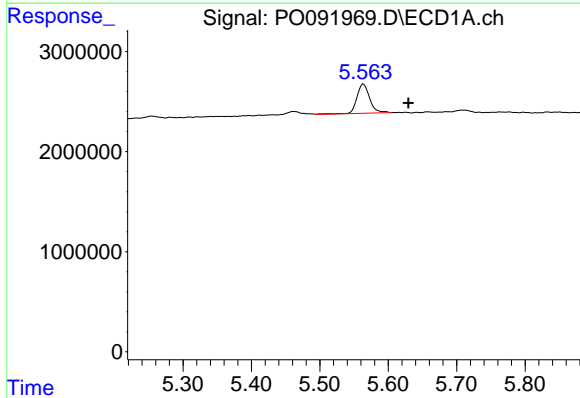
R.T.: 6.501 min
 Delta R.T.: -0.064 min
 Response: 4256325
 Conc: 84.07 ng/ml

Instrument :
 ECD_O
 ClientSampleId :



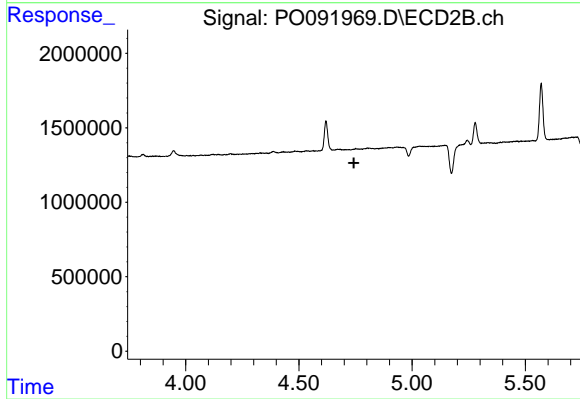
#20 AR-1242-5

R.T.: 5.570 min
 Delta R.T.: 0.022 min
 Response: 3903371
 Conc: 118.36 ng/ml



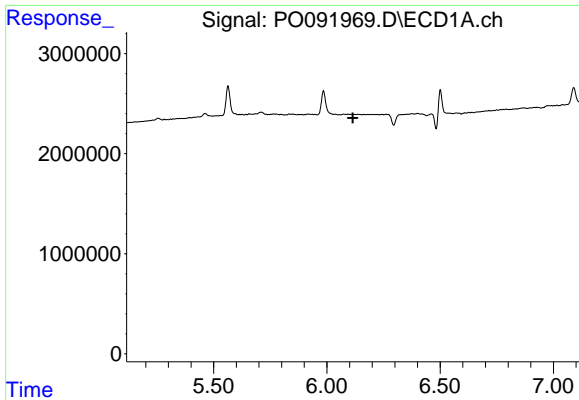
#21 AR-1248-1

R.T.: 5.563 min
 Delta R.T.: -0.066 min
 Response: 3833886
 Conc: 70.05 ng/ml



#21 AR-1248-1

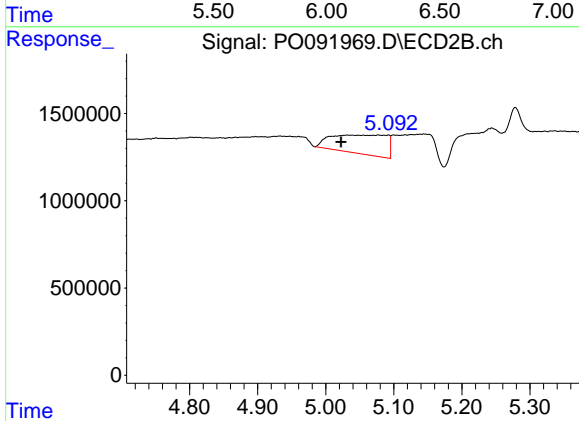
R.T.: 0.000 min
 Exp R.T. : 4.743 min
 Response: 0
 Conc: N.D.



#23 AR-1248-3

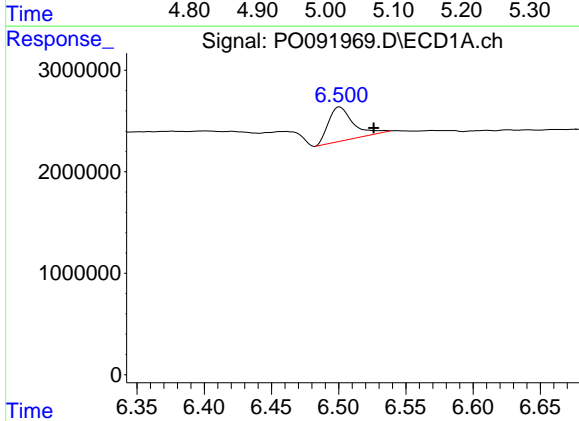
R.T.: 0.000 min
 Exp R.T.: 6.115 min
 Response: 0
 Conc: N.D.

Instrument :
 ECD_O
 ClientSampleId :



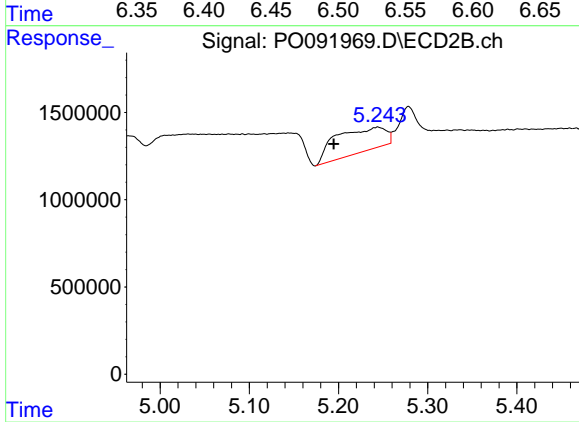
#23 AR-1248-3

R.T.: 5.077 min
 Delta R.T.: 0.055 min
 Response: 6139222
 Conc: 134.76 ng/ml



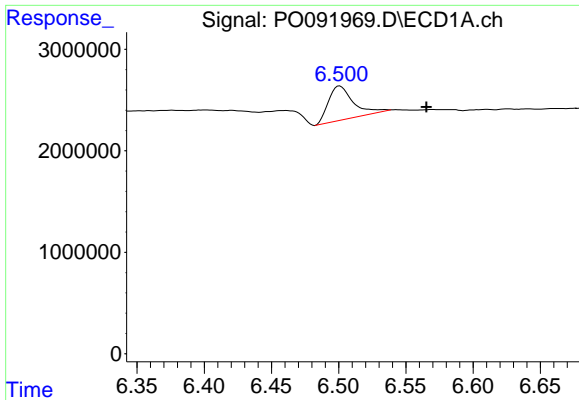
#24 AR-1248-4

R.T.: 6.501 min
 Delta R.T.: -0.025 min
 Response: 4256325
 Conc: 47.85 ng/ml



#24 AR-1248-4

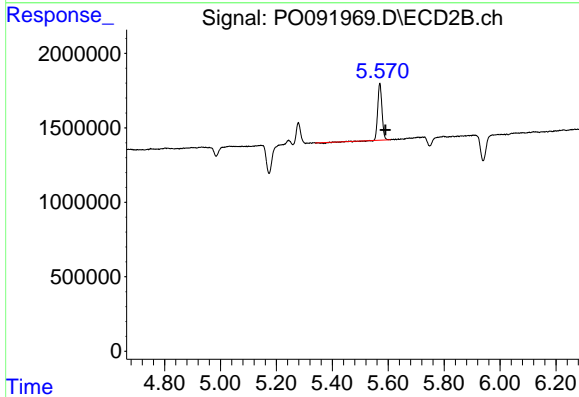
R.T.: 5.244 min
 Delta R.T.: 0.049 min
 Response: 5363772
 Conc: 102.87 ng/ml



#25 AR-1248-5

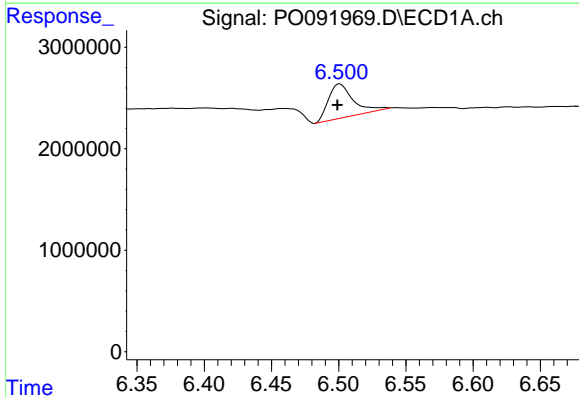
R.T.: 6.501 min
 Delta R.T.: -0.064 min
 Response: 4256325
 Conc: 49.20 ng/ml

Instrument :
 ECD_O
 ClientSampleId :



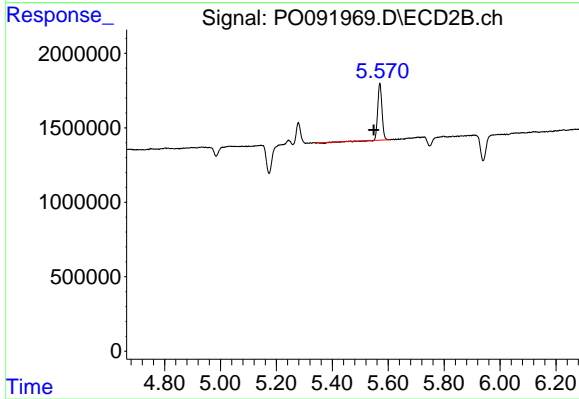
#25 AR-1248-5

R.T.: 5.570 min
 Delta R.T.: -0.020 min
 Response: 3903371
 Conc: 88.26 ng/ml



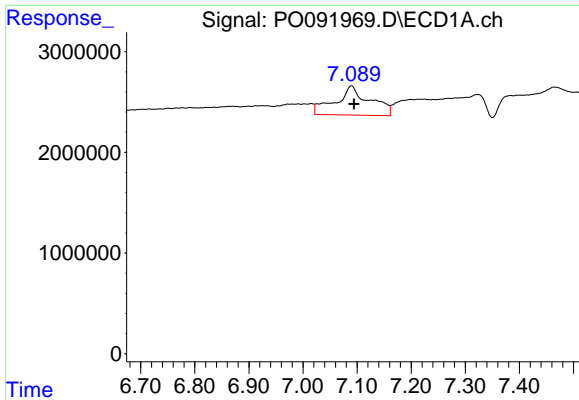
#26 AR-1254-1

R.T.: 6.501 min
 Delta R.T.: 0.002 min
 Response: 4256325
 Conc: 41.14 ng/ml



#26 AR-1254-1

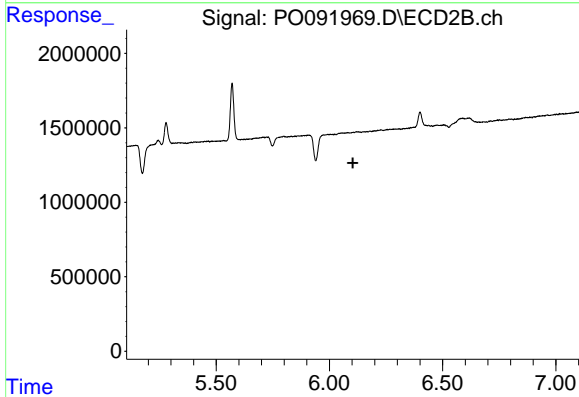
R.T.: 5.570 min
 Delta R.T.: 0.021 min
 Response: 3903371
 Conc: 52.87 ng/ml



#28 AR-1254-3

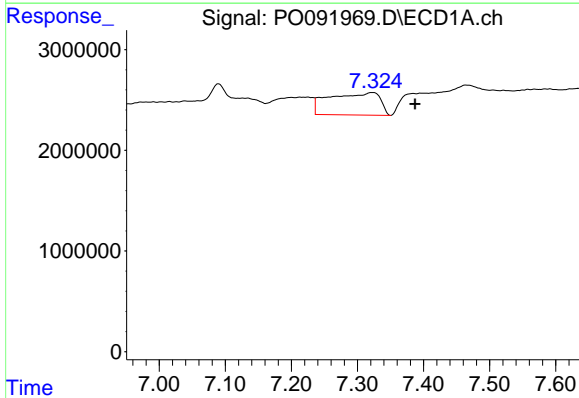
R.T.: 7.090 min
 Delta R.T.: -0.005 min
 Response: 12811533
 Conc: 85.68 ng/ml

Instrument :
 ECD_O
 ClientSampleId :



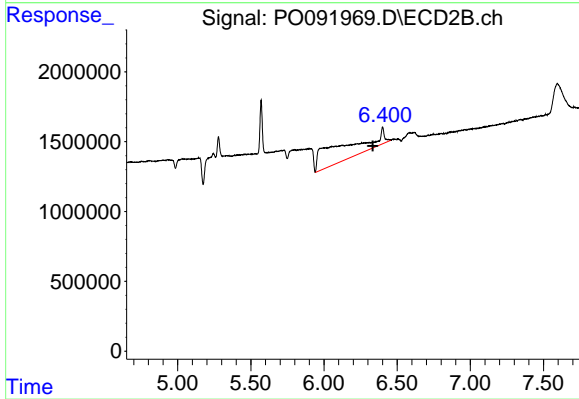
#28 AR-1254-3

R.T.: 0.000 min
 Exp R.T. : 6.104 min
 Response: 0
 Conc: N.D.



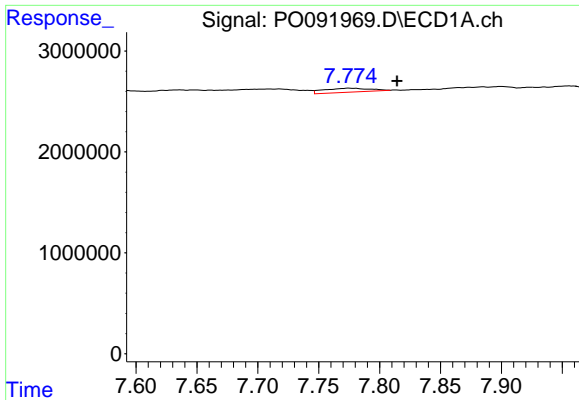
#29 AR-1254-4

R.T.: 7.323 min
 Delta R.T.: -0.064 min
 Response: 11917132
 Conc: 125.39 ng/ml



#29 AR-1254-4

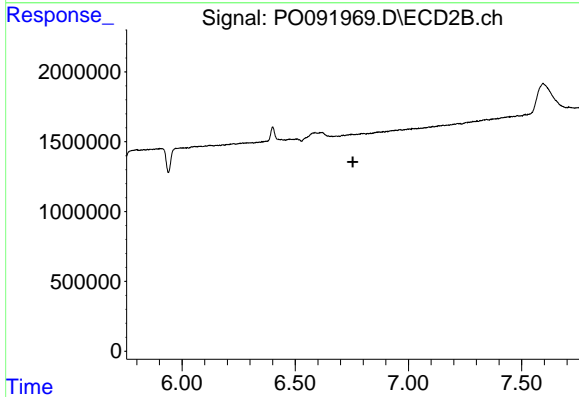
R.T.: 6.400 min
 Delta R.T.: 0.067 min
 Response: 26389009
 Conc: 544.49 ng/ml



#30 AR-1254-5

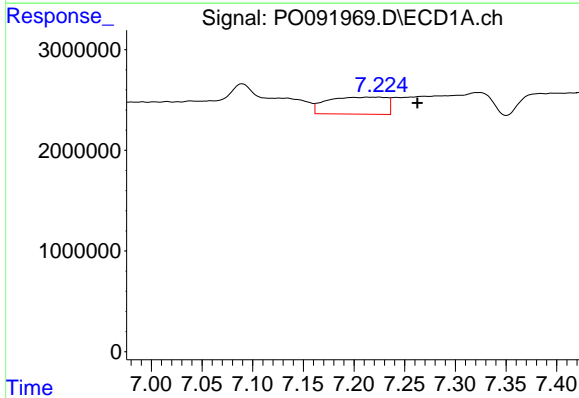
R.T.: 7.776 min
 Delta R.T.: -0.039 min
 Response: 1042373
 Conc: 8.40 ng/ml

Instrument :
 ECD_O
 ClientSampleId :



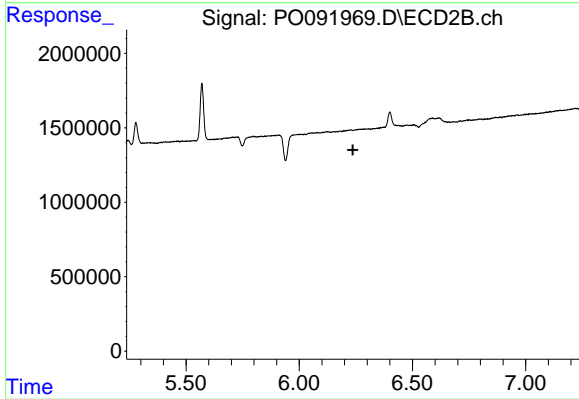
#30 AR-1254-5

R.T.: 0.000 min
 Exp R.T. : 6.755 min
 Response: 0
 Conc: N.D.



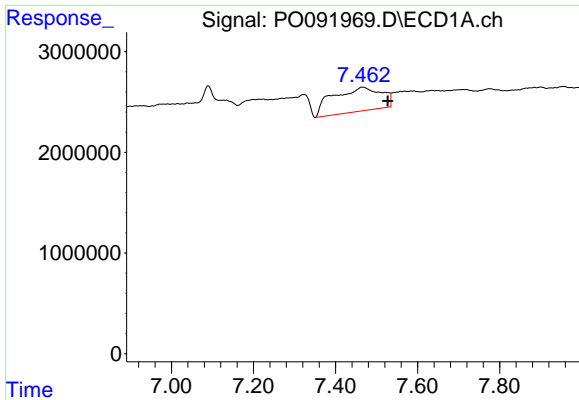
#31 AR-1260-1

R.T.: 7.225 min
 Delta R.T.: -0.038 min
 Response: 6892835
 Conc: 57.41 ng/ml



#31 AR-1260-1

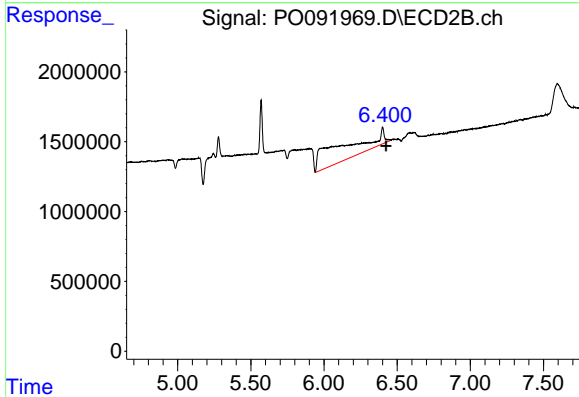
R.T.: 0.000 min
 Exp R.T. : 6.237 min
 Response: 0
 Conc: N.D.



#32 AR-1260-2

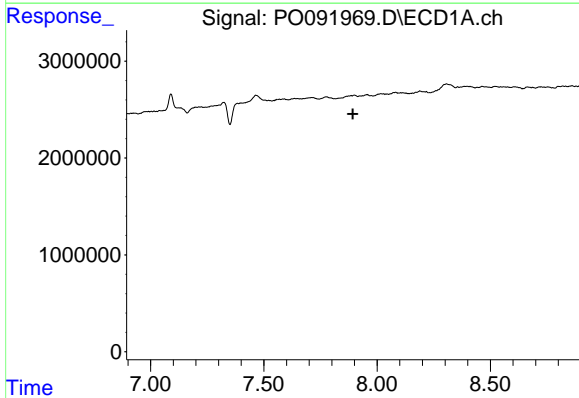
R.T.: 7.465 min
 Delta R.T.: -0.062 min
 Response: 19529429
 Conc: 152.03 ng/ml

Instrument :
 ECD_O
 ClientSampleId :



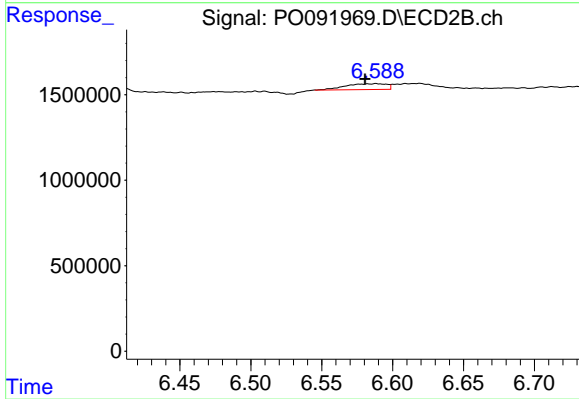
#32 AR-1260-2

R.T.: 6.400 min
 Delta R.T.: -0.025 min
 Response: 26389009
 Conc: 360.26 ng/ml



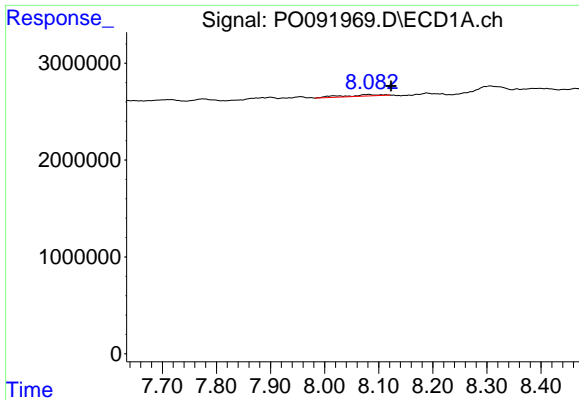
#33 AR-1260-3

R.T.: 0.000 min
 Exp R.T. : 7.893 min
 Response: 0
 Conc: N.D.



#33 AR-1260-3

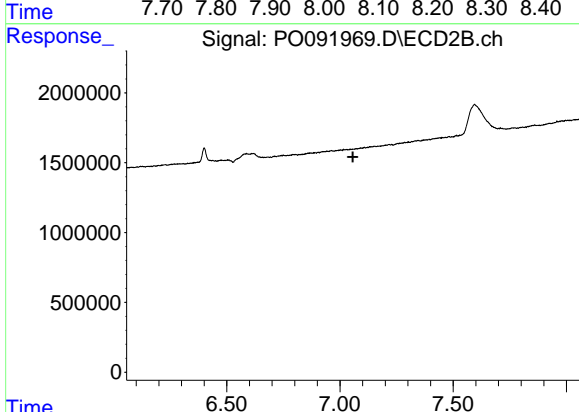
R.T.: 6.588 min
 Delta R.T.: 0.007 min
 Response: 687673
 Conc: 9.61 ng/ml



#34 AR-1260-4

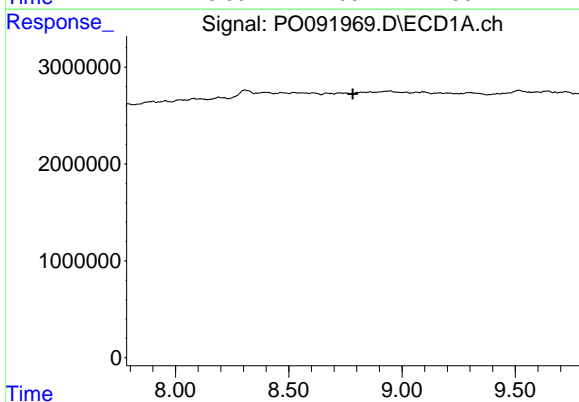
R.T.: 8.082 min
 Delta R.T.: -0.041 min
 Response: 748008
 Conc: 6.48 ng/ml

Instrument :
 ECD_O
 ClientSampleId :



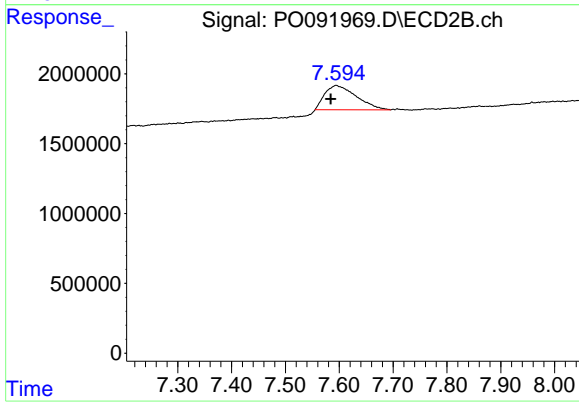
#34 AR-1260-4

R.T.: 0.000 min
 Exp R.T. : 7.057 min
 Response: 0
 Conc: N.D.



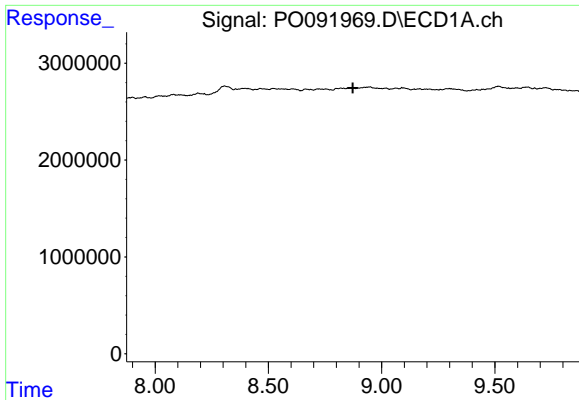
#38 AR-1262-3

R.T.: 0.000 min
 Exp R.T. : 8.783 min
 Response: 0
 Conc: N.D.



#38 AR-1262-3

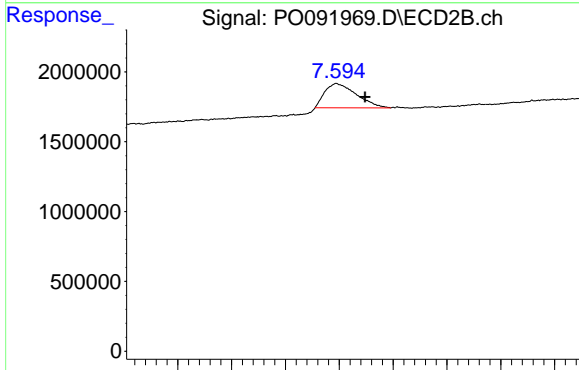
R.T.: 7.594 min
 Delta R.T.: 0.010 min
 Response: 7078937
 Conc: 158.31 ng/ml



#39 AR-1262-4

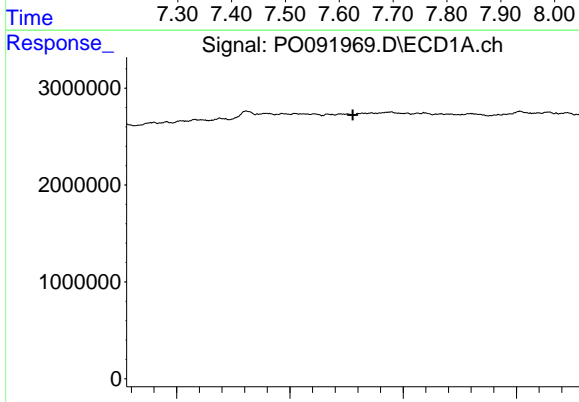
R.T.: 0.000 min
 Exp R.T.: 8.872 min
 Response: 0
 Conc: N.D.

Instrument :
 ECD_O
 ClientSampleId :



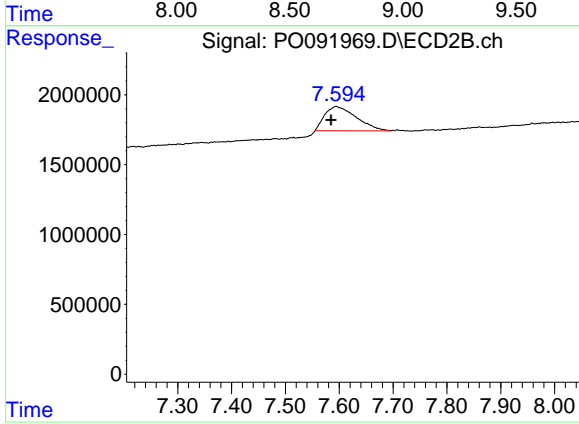
#39 AR-1262-4

R.T.: 7.594 min
 Delta R.T.: -0.054 min
 Response: 7078937
 Conc: 85.25 ng/ml



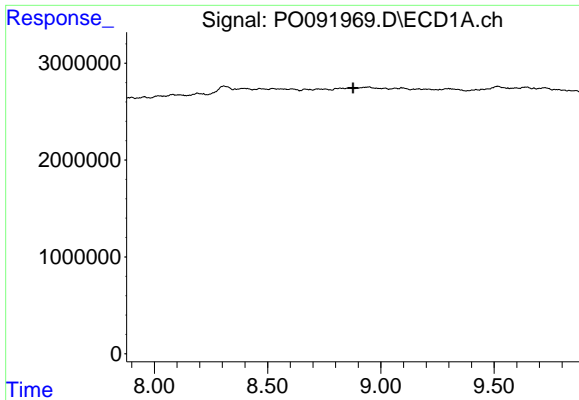
#41 AR-1268-1

R.T.: 0.000 min
 Exp R.T.: 8.778 min
 Response: 0
 Conc: N.D.



#41 AR-1268-1

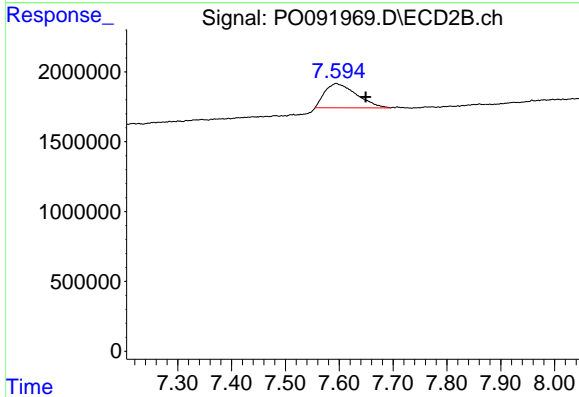
R.T.: 7.594 min
 Delta R.T.: 0.010 min
 Response: 7078937
 Conc: 46.45 ng/ml



#42 AR-1268-2

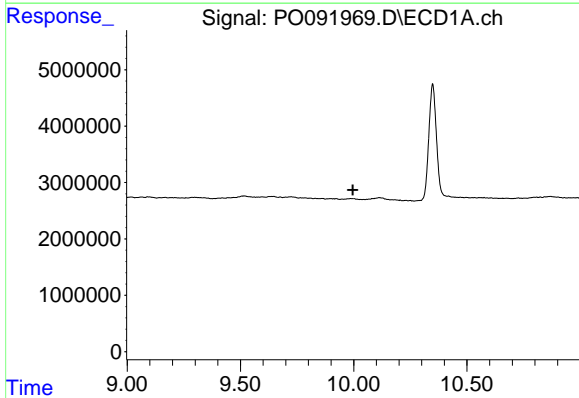
R.T.: 0.000 min
 Exp R.T. : 8.877 min
 Response: 0
 Conc: N.D.

Instrument :
 ECD_O
 ClientSampleId :



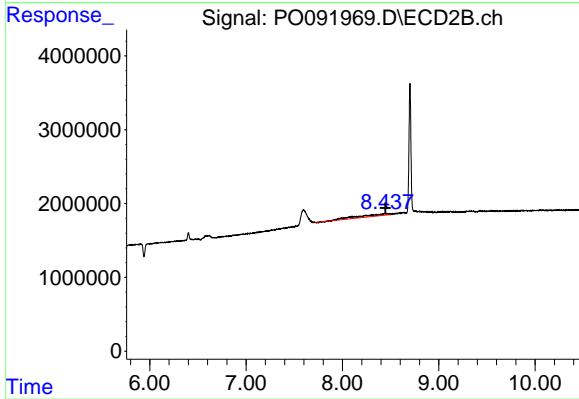
#42 AR-1268-2

R.T.: 7.594 min
 Delta R.T.: -0.055 min
 Response: 7078937
 Conc: 51.73 ng/ml



#45 AR-1268-5

R.T.: 0.000 min
 Exp R.T. : 9.996 min
 Response: 0
 Conc: N.D.



#45 AR-1268-5

R.T.: 8.437 min
 Delta R.T.: -0.009 min
 Response: 5975889
 Conc: 16.03 ng/ml