

Data Path : Z:\pestpcbsrv\HPCHEM1\ECD_0\Data\P0011322\
 Data File : P0084230.D
 Signal(s) : Signal #1: ECD1A.CH Signal #2: ECD2B.CH
 Acq On : 14 Jan 2022 1:23
 Operator : AJ\MA
 Sample : AR1248ICC250
 Misc :
 ALS Vial : 18 Sample Multiplier: 1

Instrument :
 ECD_0
 ClientSampleId :
 AR1248ICC250

Integration File signal 1: autoint1.e
 Integration File signal 2: autoint2.e
 Quant Time: Jan 14 01:40:10 2022
 Quant Method : Z:\pestpcbsrv\HPCHEM1\ECD_0\methods\P0011322.M
 Quant Title : GC EXTRACTABLES
 QLast Update : Fri Jan 14 01:39:58 2022
 Response via : Initial Calibration
 Integrator: ChemStation 6890 Scale Mode: Small noise peaks clipped

Volume Inj. : 2 µl
 Signal #1 Phase : ZB-MR1 Signal #2 Phase: ZB-MR2
 Signal #1 Info : 30Mx0.32mmx 0.50µ Signal #2 Info : 30M x 0.32mm x 0.25µm

Compound	RT#1	RT#2	Resp#1	Resp#2	ng/ml	ng/ml

System Monitoring Compounds						
1) SA Tetrachlo...	6.522	5.309	2588289	576687	26.686	25.202
2) SA Decachlor...	13.779	11.320	1561594	478379	26.738	26.229
Target Compounds						
21) L5 AR-1248-1	7.973	6.778	481056	117531	269.860	260.842
22) L5 AR-1248-2	8.288	7.071	713827	160965	275.858	265.338
23) L5 AR-1248-3	8.523	7.122	736432	168125	271.560	264.029
24) L5 AR-1248-4	8.971	7.327	772455	193980	273.451	262.060
25) L5 AR-1248-5	9.015	7.786	725776	184785	270.754	259.120

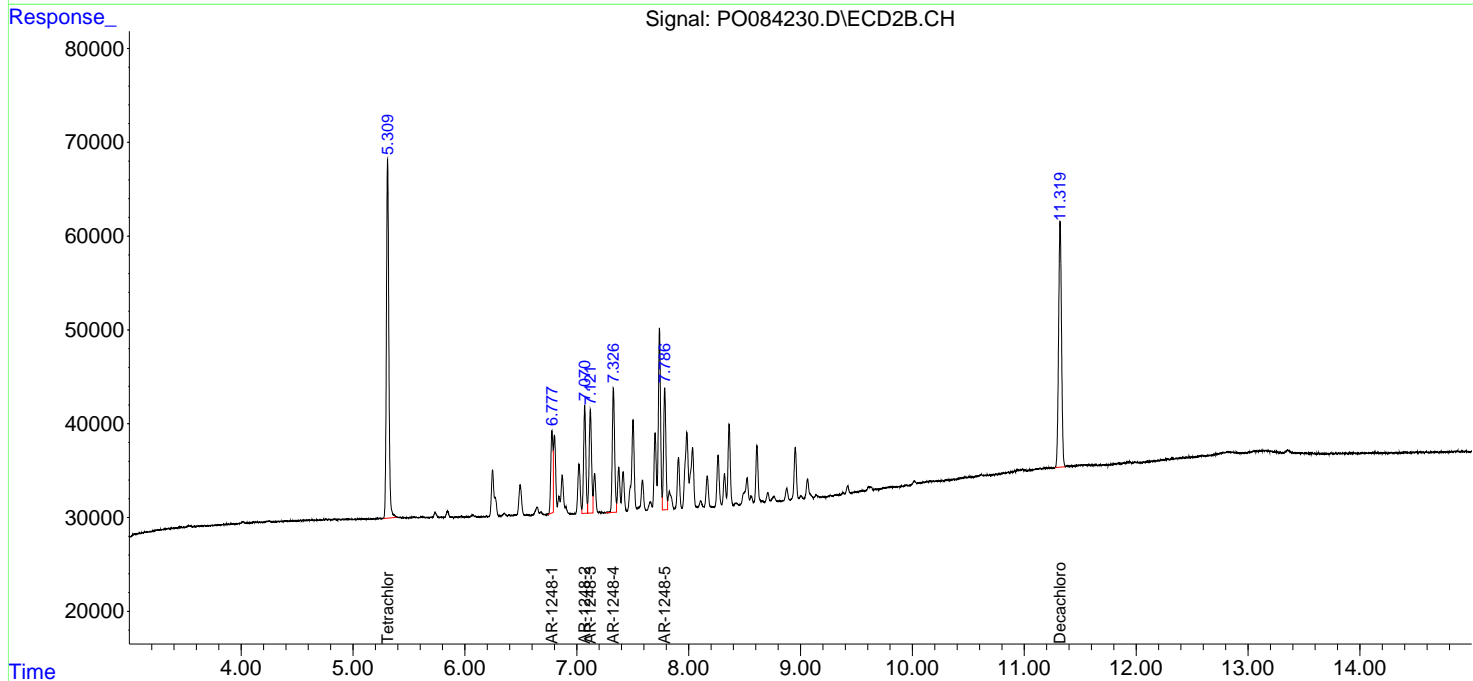
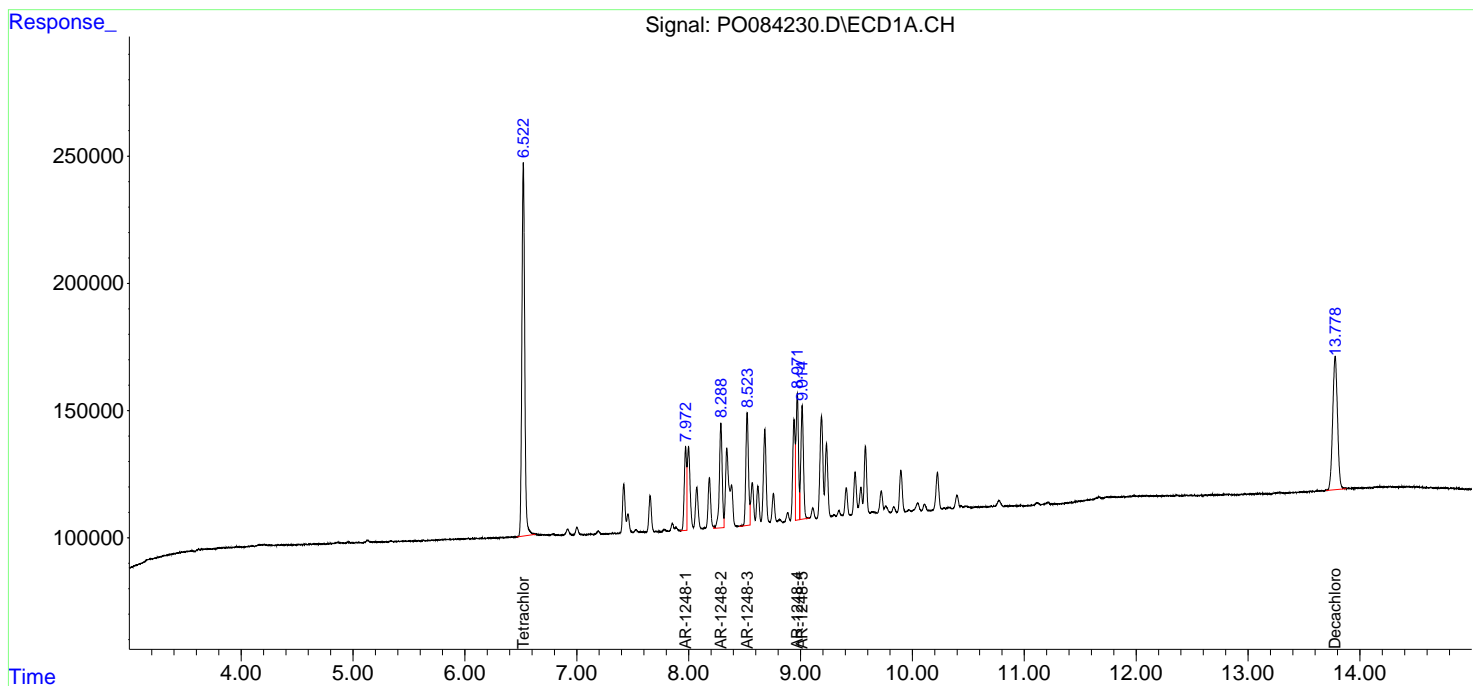
(f)=RT Delta > 1/2 Window (#)=Amounts differ by > 25% (m)=manual int.

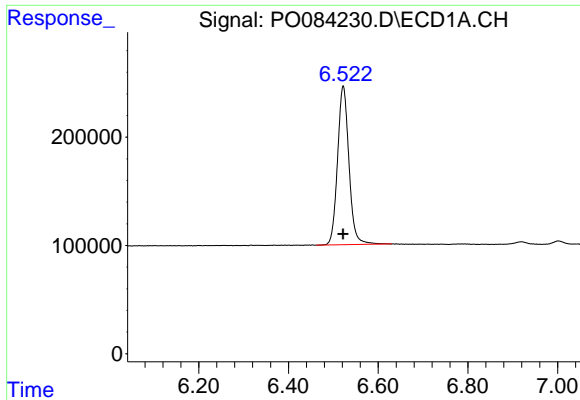
Data Path : Z:\pestpcbsrv\HPCHEM1\ECD_O\Data\PO011322\
 Data File : PO084230.D
 Signal(s) : Signal #1: ECD1A.CH Signal #2: ECD2B.CH
 Acq On : 14 Jan 2022 1:23
 Operator : AJ\MA
 Sample : AR1248ICC250
 Misc :
 ALS Vial : 18 Sample Multiplier: 1

Instrument :
 ECD_O
 ClientSampleId :
 AR1248ICC250

Integration File signal 1: autoint1.e
 Integration File signal 2: autoint2.e
 Quant Time: Jan 14 01:40:10 2022
 Quant Method : Z:\pestpcbsrv\HPCHEM1\ECD_O\methods\PO011322.M
 Quant Title : GC EXTRACTABLES
 QLast Update : Fri Jan 14 01:39:58 2022
 Response via : Initial Calibration
 Integrator: ChemStation 6890 Scale Mode: Small noise peaks clipped

Volume Inj. : 2 µl
 Signal #1 Phase : ZB-MR1 Signal #2 Phase: ZB-MR2
 Signal #1 Info : 30Mx0.32mmx 0.50µ Signal #2 Info : 30M x 0.32mm x 0.25µm

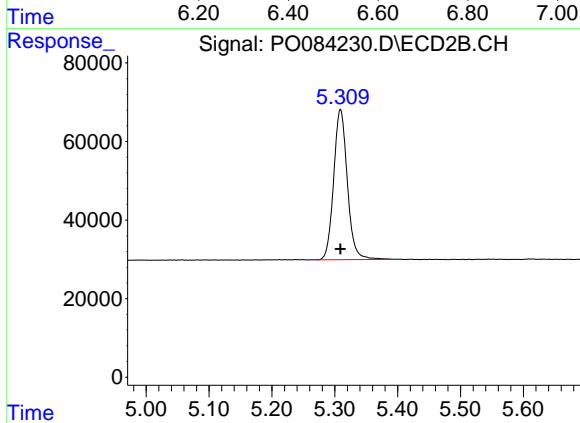




#1 Tetrachloro-m-xylene

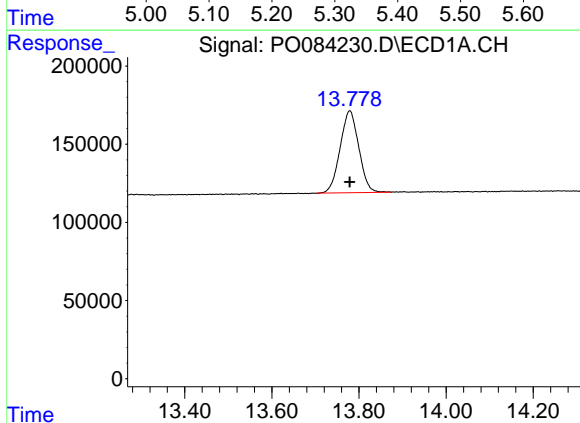
R.T.: 6.522 min
 Delta R.T.: 0.000 min
 Response: 2588289
 Conc: 26.69 ng/ml

Instrument :
 ECD_O
 ClientSampleId :
 AR1248ICC250



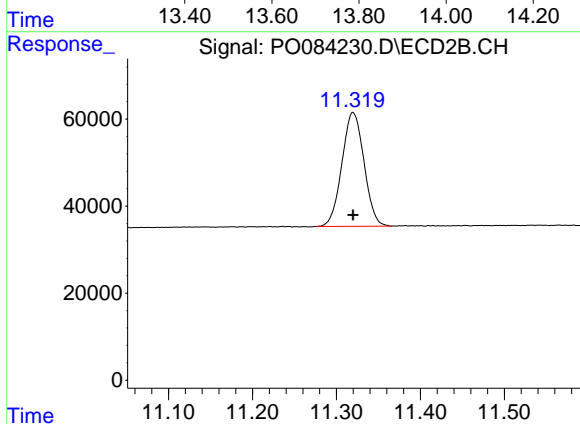
#1 Tetrachloro-m-xylene

R.T.: 5.309 min
 Delta R.T.: 0.000 min
 Response: 576687
 Conc: 25.20 ng/ml



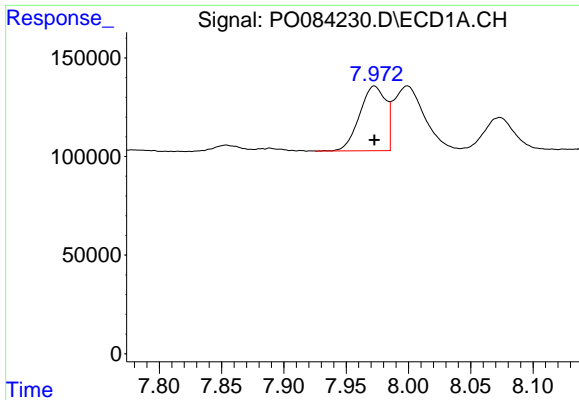
#2 Decachlorobiphenyl

R.T.: 13.779 min
 Delta R.T.: 0.000 min
 Response: 1561594
 Conc: 26.74 ng/ml



#2 Decachlorobiphenyl

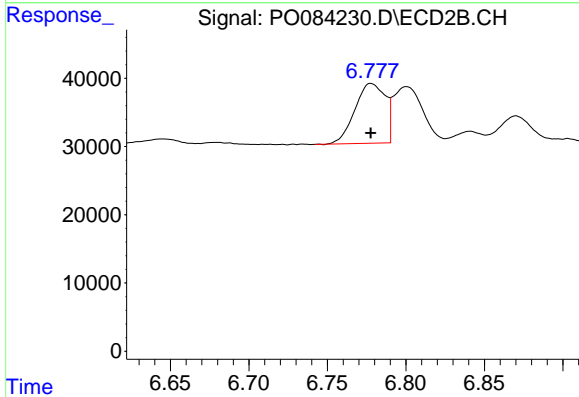
R.T.: 11.320 min
 Delta R.T.: 0.000 min
 Response: 478379
 Conc: 26.23 ng/ml



#21 AR-1248-1

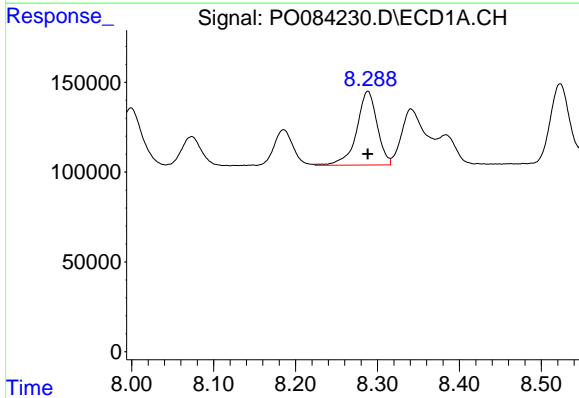
R.T.: 7.973 min
 Delta R.T.: 0.000 min
 Response: 481056
 Conc: 269.86 ng/ml

Instrument :
 ECD_O
 ClientSampleId :
 AR1248ICC250



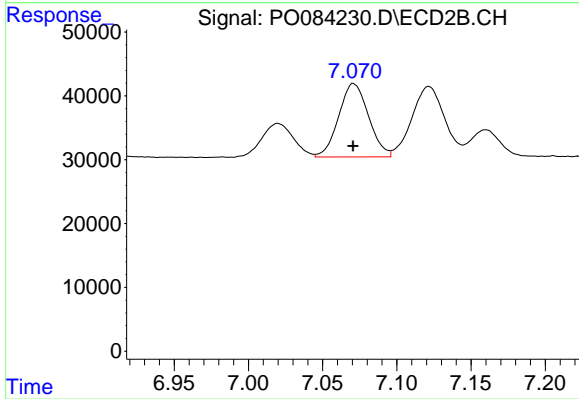
#21 AR-1248-1

R.T.: 6.778 min
 Delta R.T.: 0.000 min
 Response: 117531
 Conc: 260.84 ng/ml



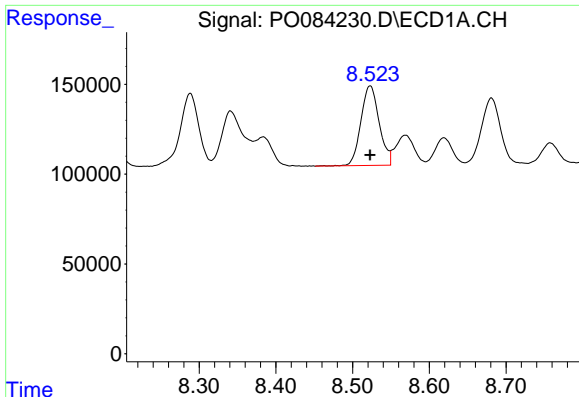
#22 AR-1248-2

R.T.: 8.288 min
 Delta R.T.: 0.000 min
 Response: 713827
 Conc: 275.86 ng/ml



#22 AR-1248-2

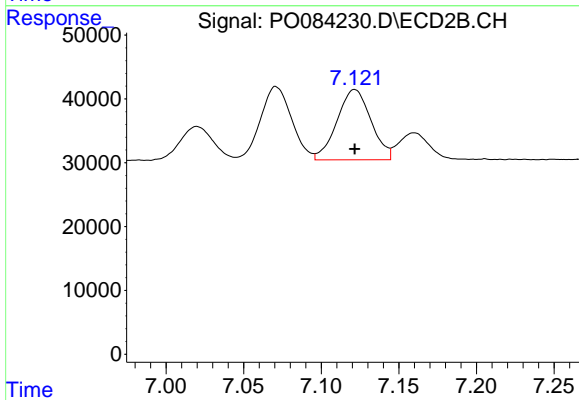
R.T.: 7.071 min
 Delta R.T.: 0.000 min
 Response: 160965
 Conc: 265.34 ng/ml



#23 AR-1248-3

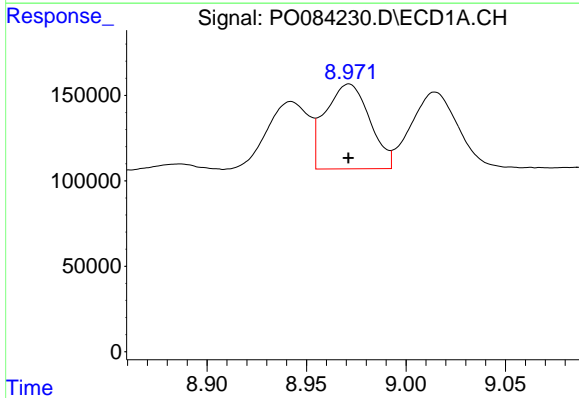
R.T.: 8.523 min
 Delta R.T.: 0.000 min
 Response: 736432
 Conc: 271.56 ng/ml

Instrument :
 ECD_O
 ClientSampleId :
 AR1248ICC250



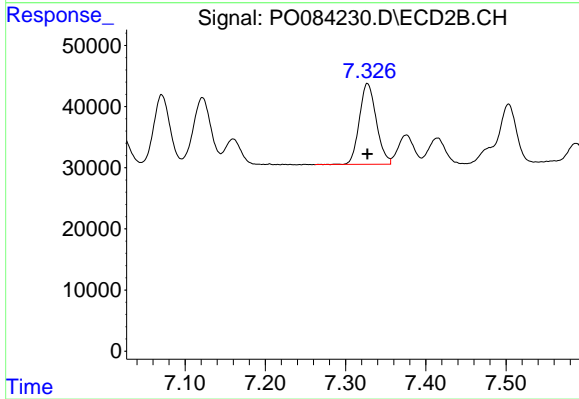
#23 AR-1248-3

R.T.: 7.122 min
 Delta R.T.: 0.000 min
 Response: 168125
 Conc: 264.03 ng/ml



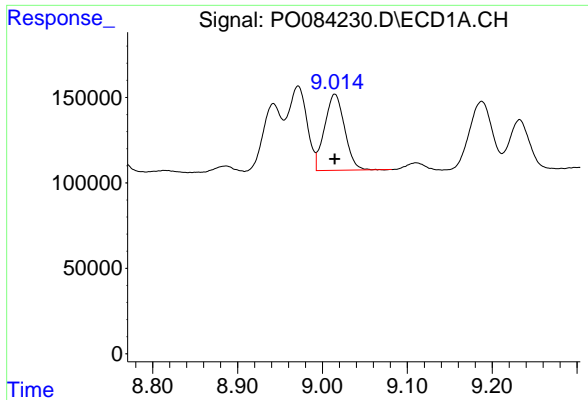
#24 AR-1248-4

R.T.: 8.971 min
 Delta R.T.: 0.000 min
 Response: 772455
 Conc: 273.45 ng/ml



#24 AR-1248-4

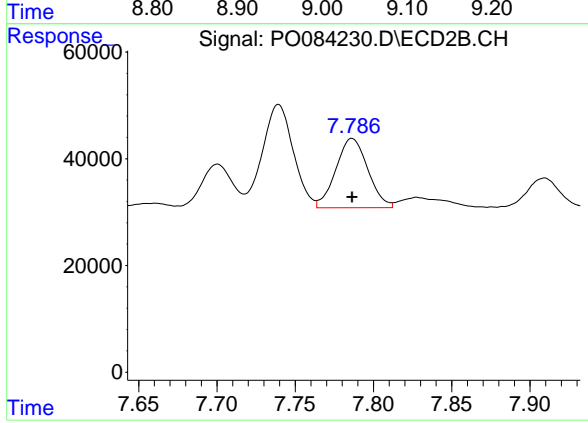
R.T.: 7.327 min
 Delta R.T.: 0.000 min
 Response: 193980
 Conc: 262.06 ng/ml



#25 AR-1248-5

R.T.: 9.015 min
 Delta R.T.: 0.000 min
 Response: 725776
 Conc: 270.75 ng/ml

Instrument :
 ECD_O
 ClientSampleId :
 AR1248ICC250



#25 AR-1248-5

R.T.: 7.786 min
 Delta R.T.: 0.000 min
 Response: 184785
 Conc: 259.12 ng/ml