

Data Path : Z:\pestpcbsrv\HPCHEM1\ECD_O\Data\P0011323\
 Data File : P0092015.D
 Signal(s) : Signal #1: ECD1A.ch Signal #2: ECD2B.ch
 Acq On : 13 Jan 2023 09:56
 Operator : YP/AJ
 Sample : 01102-08 10X
 Misc :
 ALS Vial : 27 Sample Multiplier: 1

Instrument :
 ECD_O
 ClientSampleId :

Integration File signal 1: autoint1.e
 Integration File signal 2: autoint2.e
 Quant Time: Jan 13 10:51:28 2023
 Quant Method : Z:\pestpcbsrv\HPCHEM1\ECD_O\methods\P0011023.M
 Quant Title : GC EXTRACTABLES
 QLast Update : Wed Jan 11 04:41:00 2023
 Response via : Initial Calibration
 Integrator: ChemStation

Volume Inj. : 2 µl
 Signal #1 Phase : ZB-MR2 Signal #2 Phase: ZB-MR2
 Signal #1 Info : 30Mx0.32mmx 0.50µ Signal #2 Info : 30M x 0.32mm x 0.25µm

Compound	RT#1	RT#2	Resp#1	Resp#2	ng/ml	ng/ml

System Monitoring Compounds						
1) SA Tetrachlo...	4.446	3.648	4615846	2682200	1.655	1.932
2) SA Decachlor...	10.361	8.704	5017092	2633344	2.563	2.970
Target Compounds						
3) L1 AR-1016-1	5.568f	0.000	1222825	0	14.387	N.D. #
16) L4 AR-1242-1	5.568f	0.000	1222825	0	17.136	N.D. #
20) L4 AR-1242-5	0.000	5.572	0	569053	N.D.	17.255 #
21) L5 AR-1248-1	5.568f	0.000	1222825	0	22.343	N.D. #
25) L5 AR-1248-5	0.000	5.572	0	569053	N.D.	12.866 #
26) L6 AR-1254-1	0.000	5.572	0	569053	N.D.	7.708 #
27) L6 AR-1254-2	0.000	5.656f	0	440505	N.D.	6.741 #
28) L6 AR-1254-3	0.000	6.126	0	400952	N.D.	4.131 #
29) L6 AR-1254-4	0.000	6.353	0	371992	N.D.	7.675 #
32) L7 AR-1260-2	7.472f	0.000	1738326	0	13.532	N.D. #
33) L7 AR-1260-3	0.000	6.580	0	733544	N.D.	10.256 #
34) L7 AR-1260-4	0.000	7.095f	0	461587	N.D.	8.567 #
35) L7 AR-1260-5	0.000	7.260f	0	99385	N.D.	0.886 #
37) L8 AR-1262-2	0.000	7.260f	0	99385	N.D.	0.858 #
40) L8 AR-1262-5	0.000	8.099f	0	1259792	N.D.	34.575 #
44) L9 AR-1268-4	0.000	8.099f	0	1259792	N.D.	26.599 #

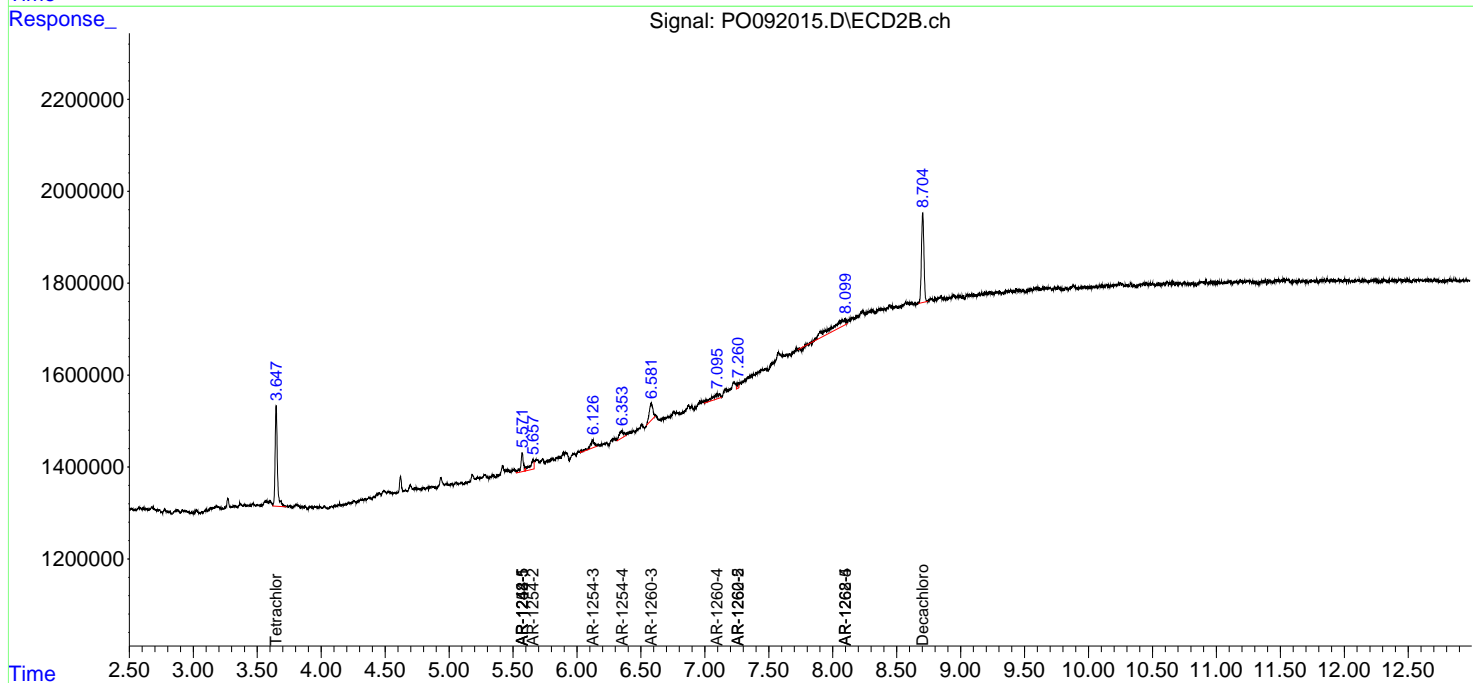
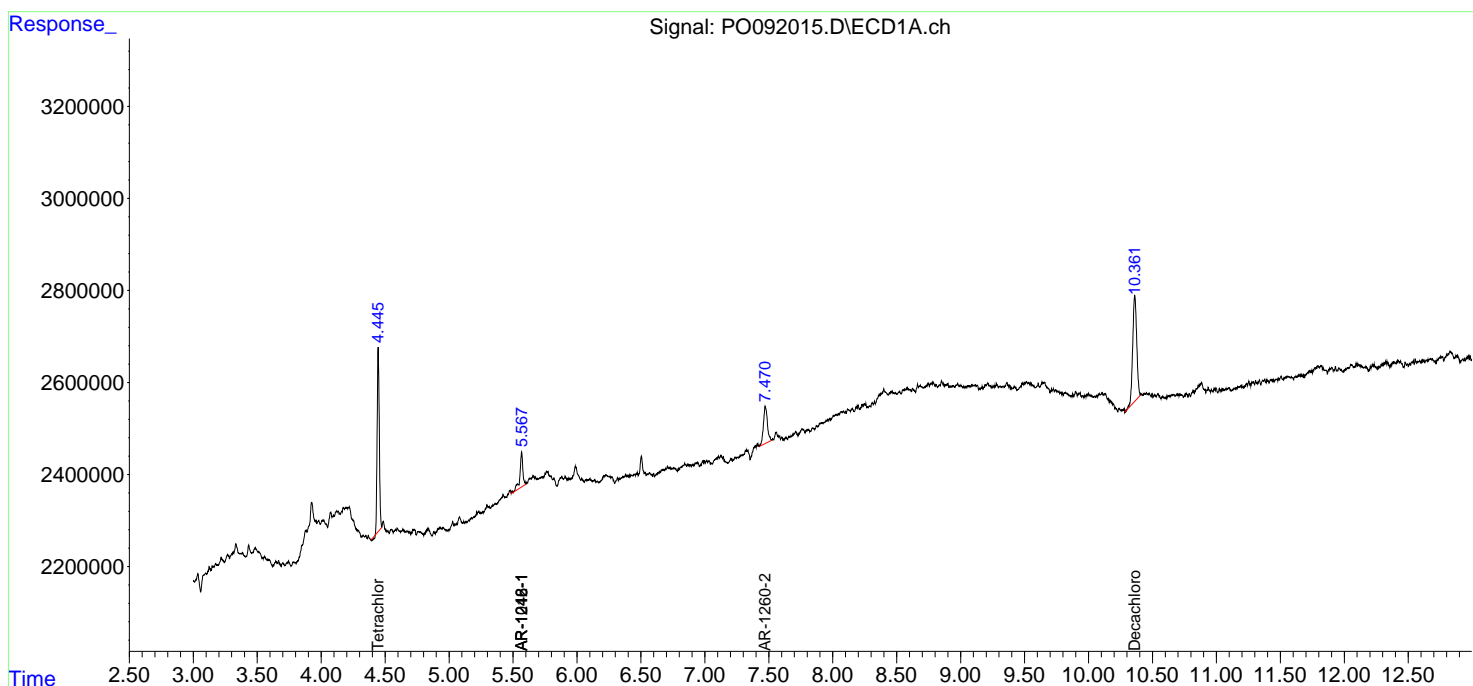
(f)=RT Delta > 1/2 Window (#)=Amounts differ by > 25% (m)=manual int.

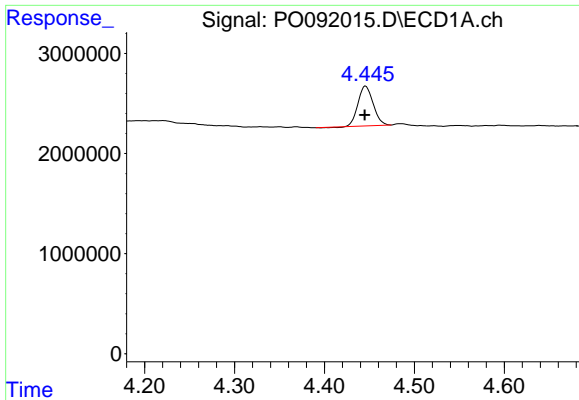
Data Path : Z:\pestpcbsrv\HPCHEM1\ECD_O\Data\P0011323\
 Data File : P0092015.D
 Signal(s) : Signal #1: ECD1A.ch Signal #2: ECD2B.ch
 Acq On : 13 Jan 2023 09:56
 Operator : YP/AJ
 Sample : 01102-08 10X
 Misc :
 ALS Vial : 27 Sample Multiplier: 1

Instrument :
 ECD_O
 ClientSampleId :

Integration File signal 1: autoint1.e
 Integration File signal 2: autoint2.e
 Quant Time: Jan 13 10:51:28 2023
 Quant Method : Z:\pestpcbsrv\HPCHEM1\ECD_O\methods\P0011023.M
 Quant Title : GC EXTRACTABLES
 QLast Update : Wed Jan 11 04:41:00 2023
 Response via : Initial Calibration
 Integrator: ChemStation

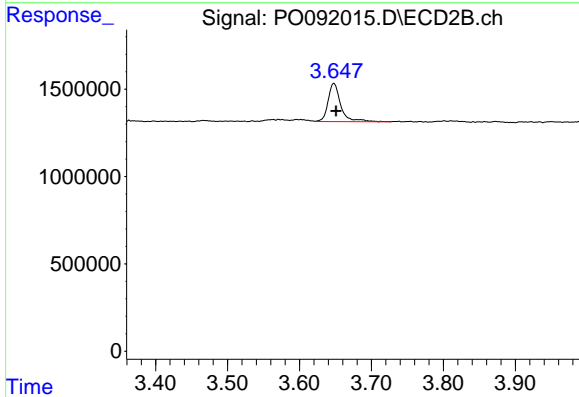
Volume Inj. : 2 µl
 Signal #1 Phase : ZB-MR1 Signal #2 Phase: ZB-MR2
 Signal #1 Info : 30Mx0.32mmx 0.50µ Signal #2 Info : 30M x 0.32mm x 0.25µm



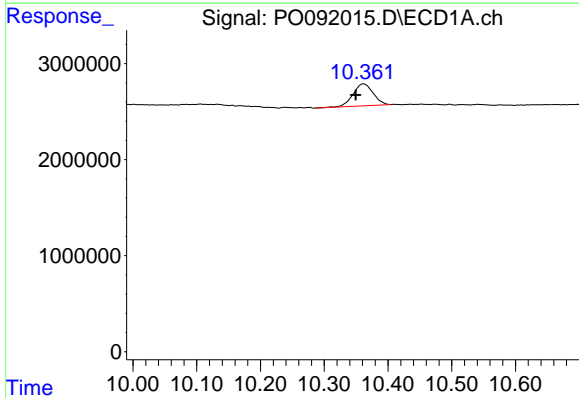


#1 Tetrachloro-m-xylene
 R.T.: 4.446 min
 Delta R.T.: 0.000 min
 Response: 4615846
 Conc: 1.65 ng/ml

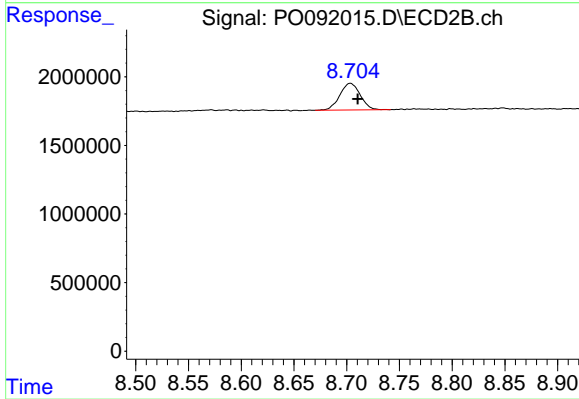
Instrument :
 ECD_O
 ClientSampleId :



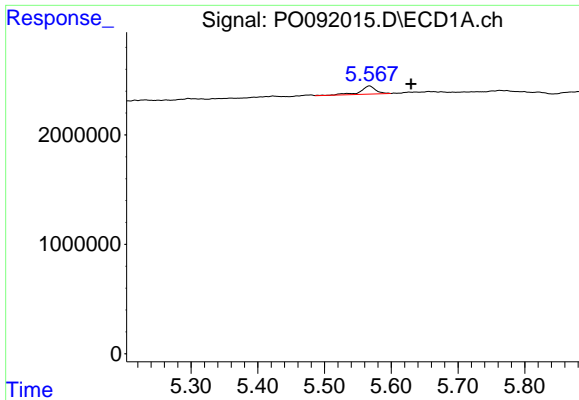
#1 Tetrachloro-m-xylene
 R.T.: 3.648 min
 Delta R.T.: -0.003 min
 Response: 2682200
 Conc: 1.93 ng/ml



#2 Decachlorobiphenyl
 R.T.: 10.361 min
 Delta R.T.: 0.012 min
 Response: 5017092
 Conc: 2.56 ng/ml



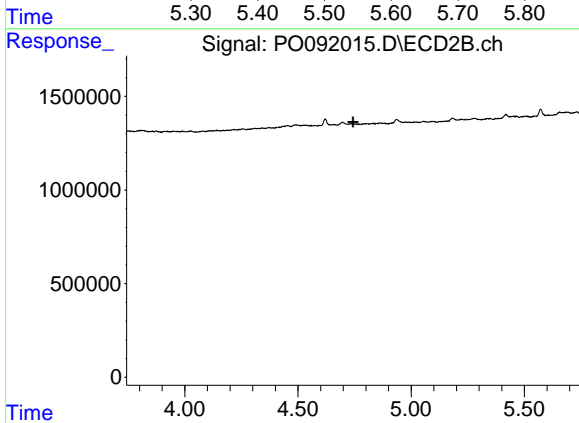
#2 Decachlorobiphenyl
 R.T.: 8.704 min
 Delta R.T.: -0.007 min
 Response: 2633344
 Conc: 2.97 ng/ml



#3 AR-1016-1

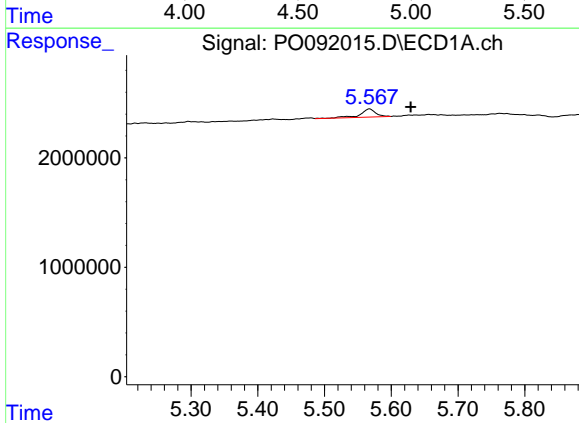
R.T.: 5.568 min
 Delta R.T.: -0.062 min
 Response: 1222825
 Conc: 14.39 ng/ml

Instrument :
 ECD_O
 ClientSampleId :



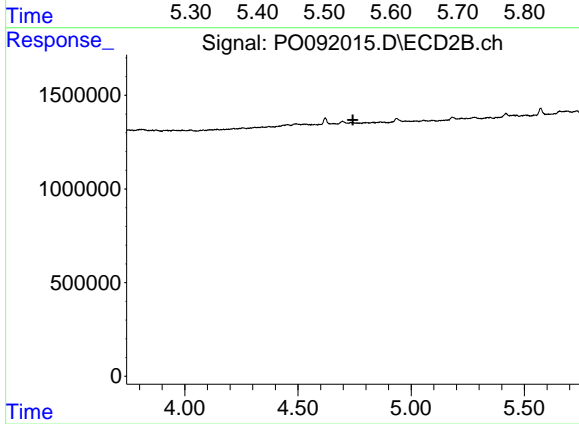
#3 AR-1016-1

R.T.: 0.000 min
 Exp R.T. : 4.743 min
 Response: 0
 Conc: N.D.



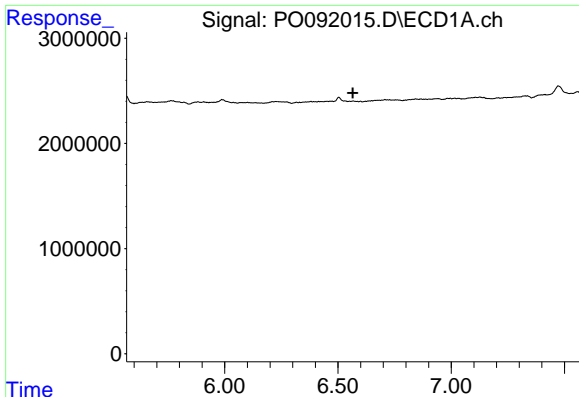
#16 AR-1242-1

R.T.: 5.568 min
 Delta R.T.: -0.062 min
 Response: 1222825
 Conc: 17.14 ng/ml



#16 AR-1242-1

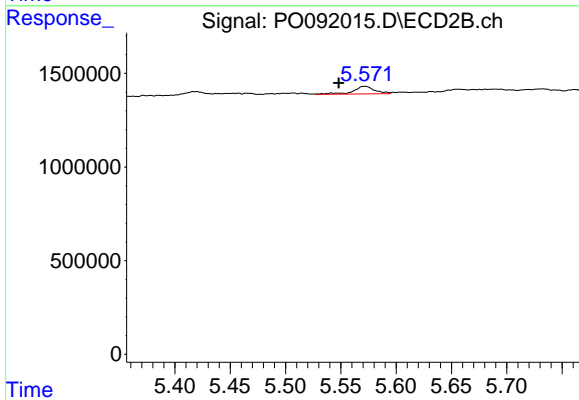
R.T.: 0.000 min
 Exp R.T. : 4.742 min
 Response: 0
 Conc: N.D.



#20 AR-1242-5

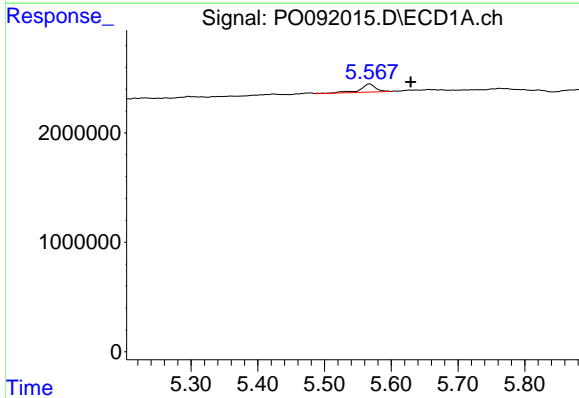
R.T.: 0.000 min
 Exp R.T.: 6.565 min
 Response: 0
 Conc: N.D.

Instrument :
 ECD_O
 ClientSampleId :



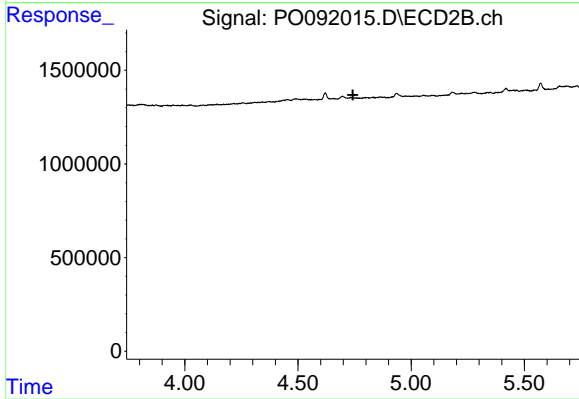
#20 AR-1242-5

R.T.: 5.572 min
 Delta R.T.: 0.024 min
 Response: 569053
 Conc: 17.26 ng/ml



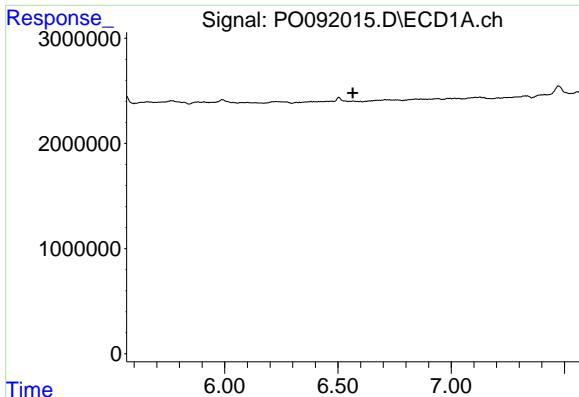
#21 AR-1248-1

R.T.: 5.568 min
 Delta R.T.: -0.062 min
 Response: 1222825
 Conc: 22.34 ng/ml



#21 AR-1248-1

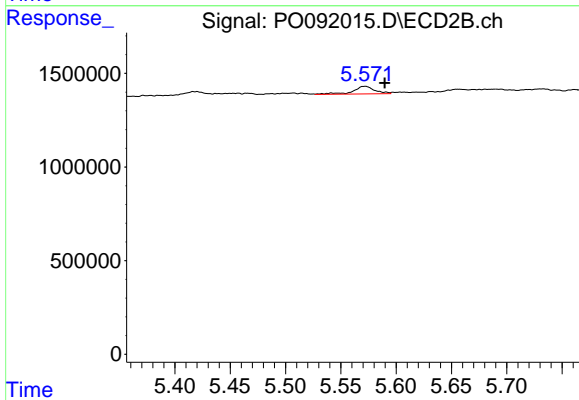
R.T.: 0.000 min
 Exp R.T.: 4.743 min
 Response: 0
 Conc: N.D.



#25 AR-1248-5

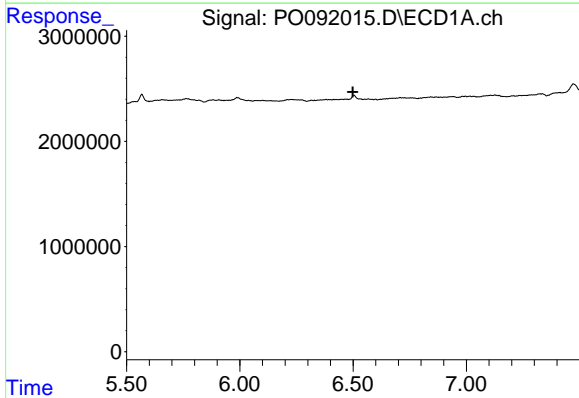
R.T.: 0.000 min
 Exp R.T. : 6.565 min
 Response: 0
 Conc: N.D.

Instrument :
 ECD_O
 ClientSampleId :



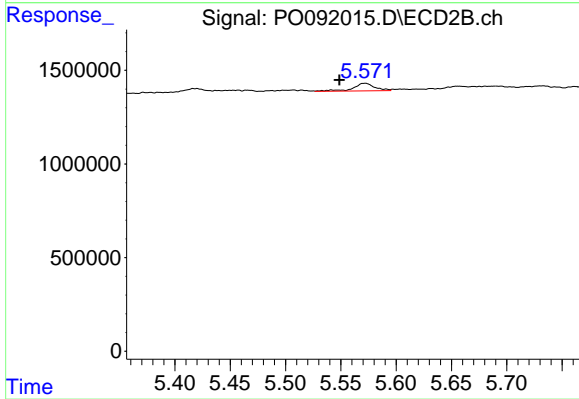
#25 AR-1248-5

R.T.: 5.572 min
 Delta R.T.: -0.018 min
 Response: 569053
 Conc: 12.87 ng/ml



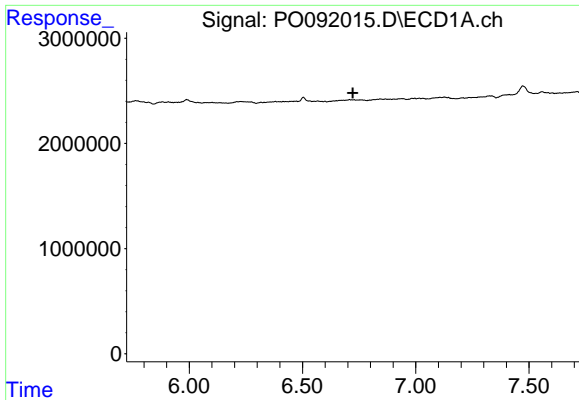
#26 AR-1254-1

R.T.: 0.000 min
 Exp R.T. : 6.499 min
 Response: 0
 Conc: N.D.



#26 AR-1254-1

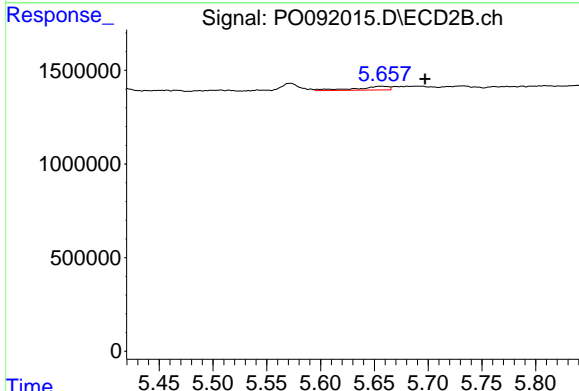
R.T.: 5.572 min
 Delta R.T.: 0.023 min
 Response: 569053
 Conc: 7.71 ng/ml



#27 AR-1254-2

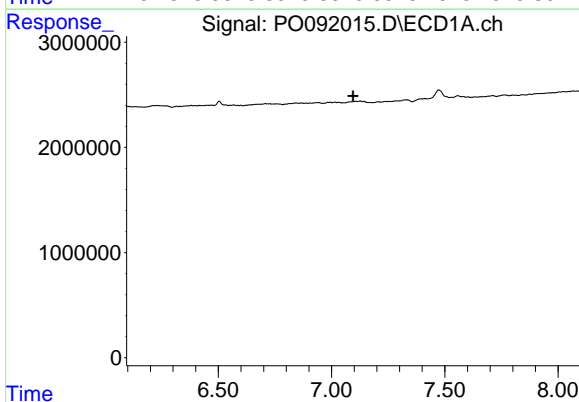
R.T.: 0.000 min
 Exp R.T.: 6.723 min
 Response: 0
 Conc: N.D.

Instrument :
 ECD_O
 ClientSampleId :



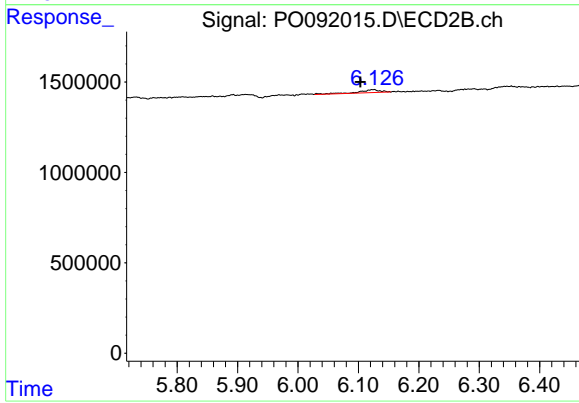
#27 AR-1254-2

R.T.: 5.656 min
 Delta R.T.: -0.041 min
 Response: 440505
 Conc: 6.74 ng/ml



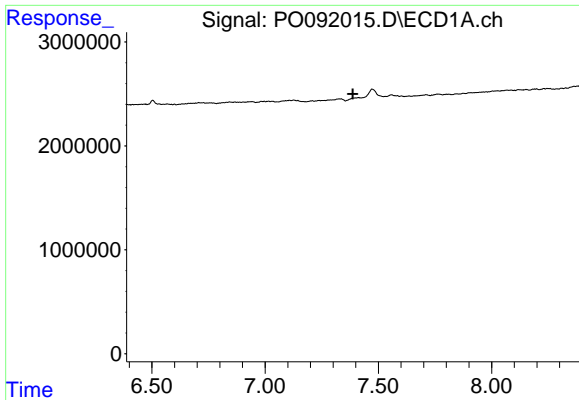
#28 AR-1254-3

R.T.: 0.000 min
 Exp R.T.: 7.095 min
 Response: 0
 Conc: N.D.



#28 AR-1254-3

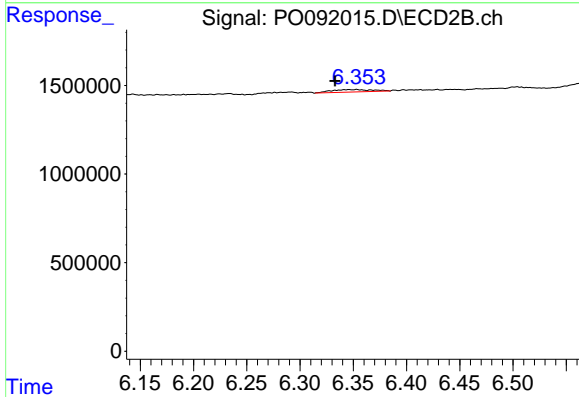
R.T.: 6.126 min
 Delta R.T.: 0.022 min
 Response: 400952
 Conc: 4.13 ng/ml



#29 AR-1254-4

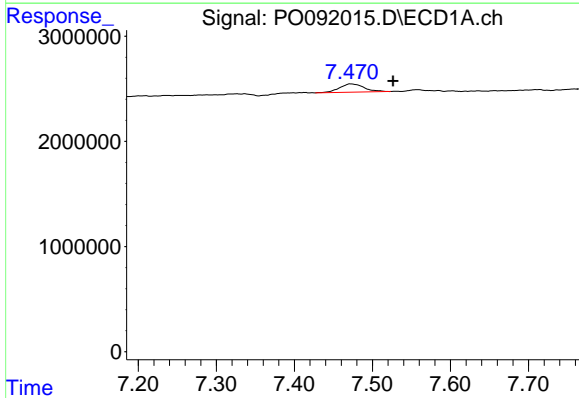
R.T.: 0.000 min
 Exp R.T. : 7.387 min
 Response: 0
 Conc: N.D.

Instrument :
 ECD_O
 ClientSampleId :



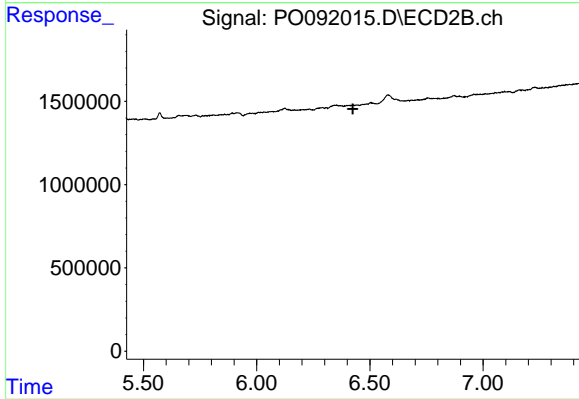
#29 AR-1254-4

R.T.: 6.353 min
 Delta R.T.: 0.020 min
 Response: 371992
 Conc: 7.68 ng/ml



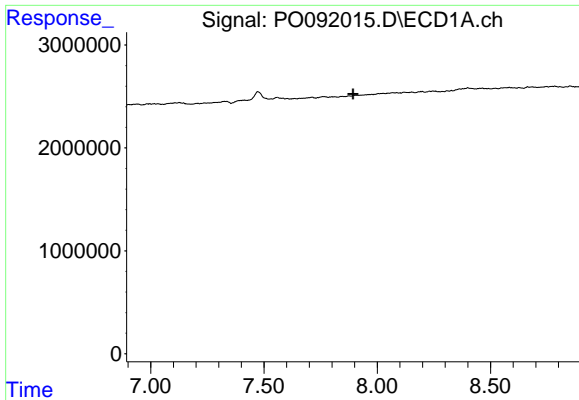
#32 AR-1260-2

R.T.: 7.472 min
 Delta R.T.: -0.055 min
 Response: 1738326
 Conc: 13.53 ng/ml



#32 AR-1260-2

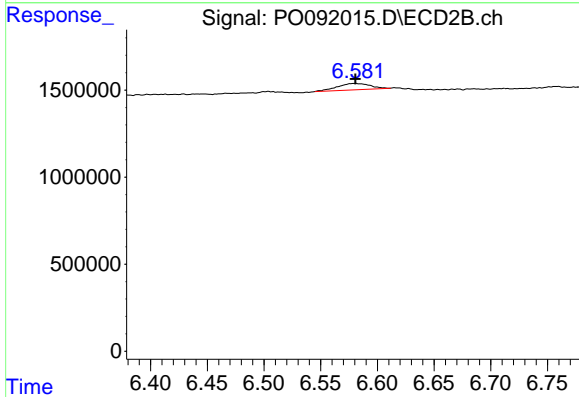
R.T.: 0.000 min
 Exp R.T. : 6.425 min
 Response: 0
 Conc: N.D.



#33 AR-1260-3

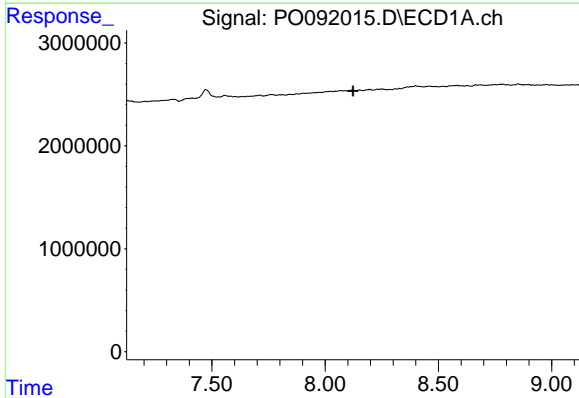
R.T.: 0.000 min
 Exp R.T.: 7.893 min
 Response: 0
 Conc: N.D.

Instrument :
 ECD_O
 ClientSampleId :



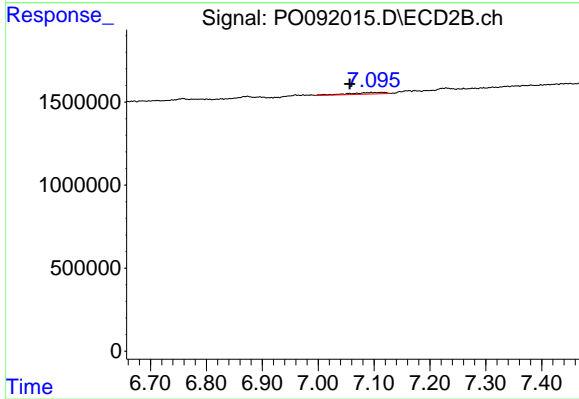
#33 AR-1260-3

R.T.: 6.580 min
 Delta R.T.: 0.000 min
 Response: 733544
 Conc: 10.26 ng/ml



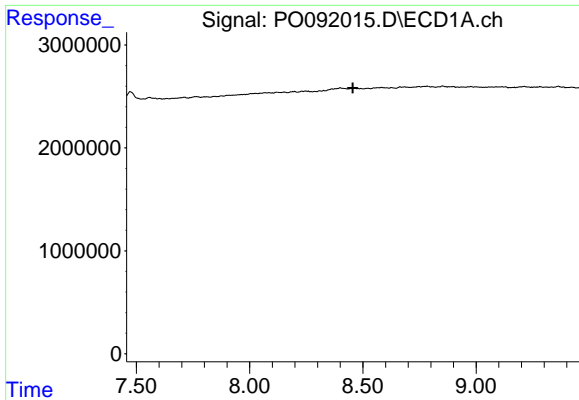
#34 AR-1260-4

R.T.: 0.000 min
 Exp R.T.: 8.123 min
 Response: 0
 Conc: N.D.



#34 AR-1260-4

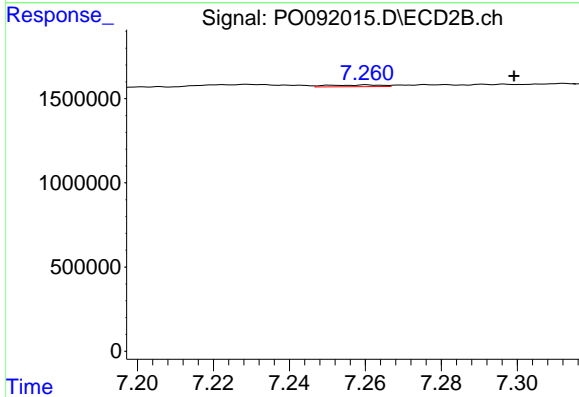
R.T.: 7.095 min
 Delta R.T.: 0.038 min
 Response: 461587
 Conc: 8.57 ng/ml



#35 AR-1260-5

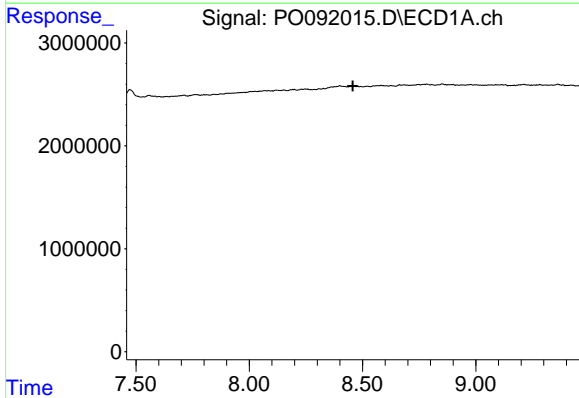
R.T.: 0.000 min
 Exp R.T.: 8.456 min
 Response: 0
 Conc: N.D.

Instrument :
 ECD_O
 ClientSampleId :



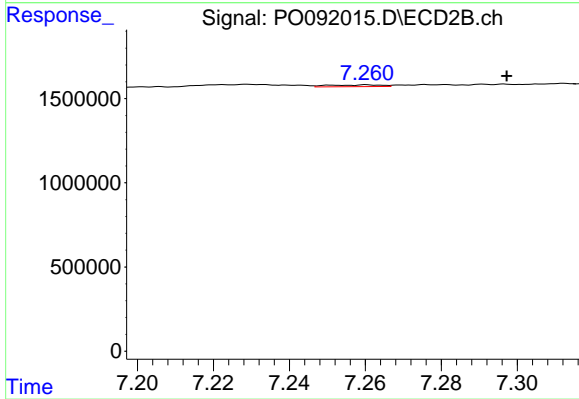
#35 AR-1260-5

R.T.: 7.260 min
 Delta R.T.: -0.039 min
 Response: 99385
 Conc: 0.89 ng/ml



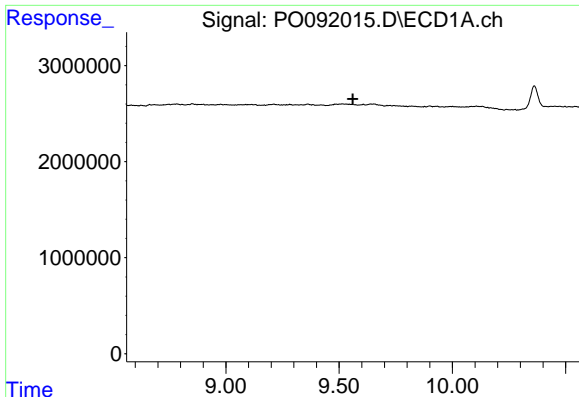
#37 AR-1262-2

R.T.: 0.000 min
 Exp R.T.: 8.457 min
 Response: 0
 Conc: N.D.



#37 AR-1262-2

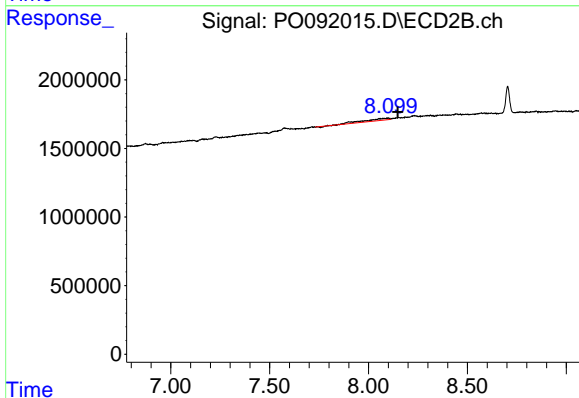
R.T.: 7.260 min
 Delta R.T.: -0.037 min
 Response: 99385
 Conc: 0.86 ng/ml



#40 AR-1262-5

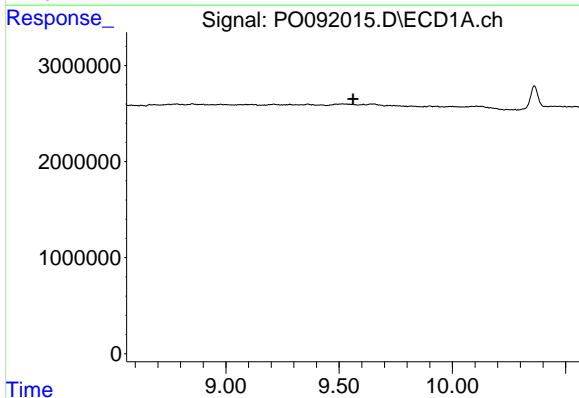
R.T.: 0.000 min
 Exp R.T. : 9.560 min
 Response: 0
 Conc: N.D.

Instrument :
 ECD_O
 ClientSampleId :



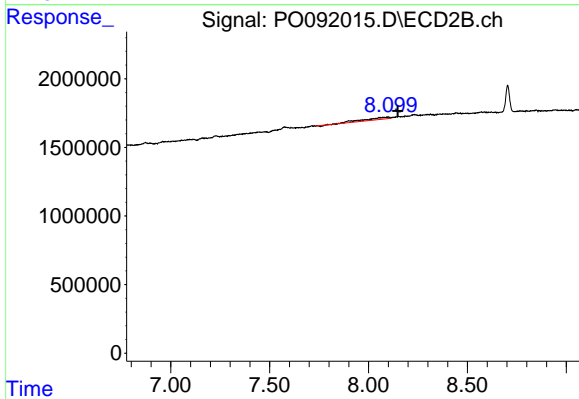
#40 AR-1262-5

R.T.: 8.099 min
 Delta R.T.: -0.048 min
 Response: 1259792
 Conc: 34.57 ng/ml



#44 AR-1268-4

R.T.: 0.000 min
 Exp R.T. : 9.562 min
 Response: 0
 Conc: N.D.



#44 AR-1268-4

R.T.: 8.099 min
 Delta R.T.: -0.049 min
 Response: 1259792
 Conc: 26.60 ng/ml