

Data Path : Z:\pestpcbsrv\HPCHEM1\ECD_0\Data\P0011421\
 Data File : P0074721.D
 Signal(s) : Signal #1: ECD1A.CH Signal #2: ECD2B.CH
 Acq On : 15 Jan 2021 4:54
 Operator : AJ/MA
 Sample : M1041-07 10X
 Misc :
 ALS Vial : 51 Sample Multiplier: 1

Instrument :
 ECD_0
ClientSampled :
 50129

Manual Integrations
APPROVED
 Ankita
 1/15/2021 12:45:21 PM

Integration File signal 1: autoint1.e
 Integration File signal 2: autoint2.e
 Quant Time: Jan 15 07:06:51 2021
 Quant Method : Z:\pestpcbsrv\HPCHEM1\ECD_0\methods\P0011121.M
 Quant Title : GC EXTRACTABLES
 QLast Update : Tue Jan 12 06:02:45 2021
 Response via : Initial Calibration
 Integrator: ChemStation 6890 Scale Mode: Small noise peaks clipped

Volume Inj. : 2 µl
 Signal #1 Phase : ZB-MR1 Signal #2 Phase: ZB-MR2
 Signal #1 Info : 30Mx0.32mmx 0.50µ Signal #2 Info : 30M x 0.32mm x 0.25µm

Compound	RT#1	RT#2	Resp#1	Resp#2	ng/ml	ng/ml

System Monitoring Compounds						
1) SA Tetrachlo...	4.929	4.003	112455	83064	1.066m	1.477m#
2) SA Decachlor...	10.946	9.258	194931	106840	1.921	1.946

Target Compounds

 (f)=RT Delta > 1/2 Window (#)=Amounts differ by > 25% (m)=manual int.

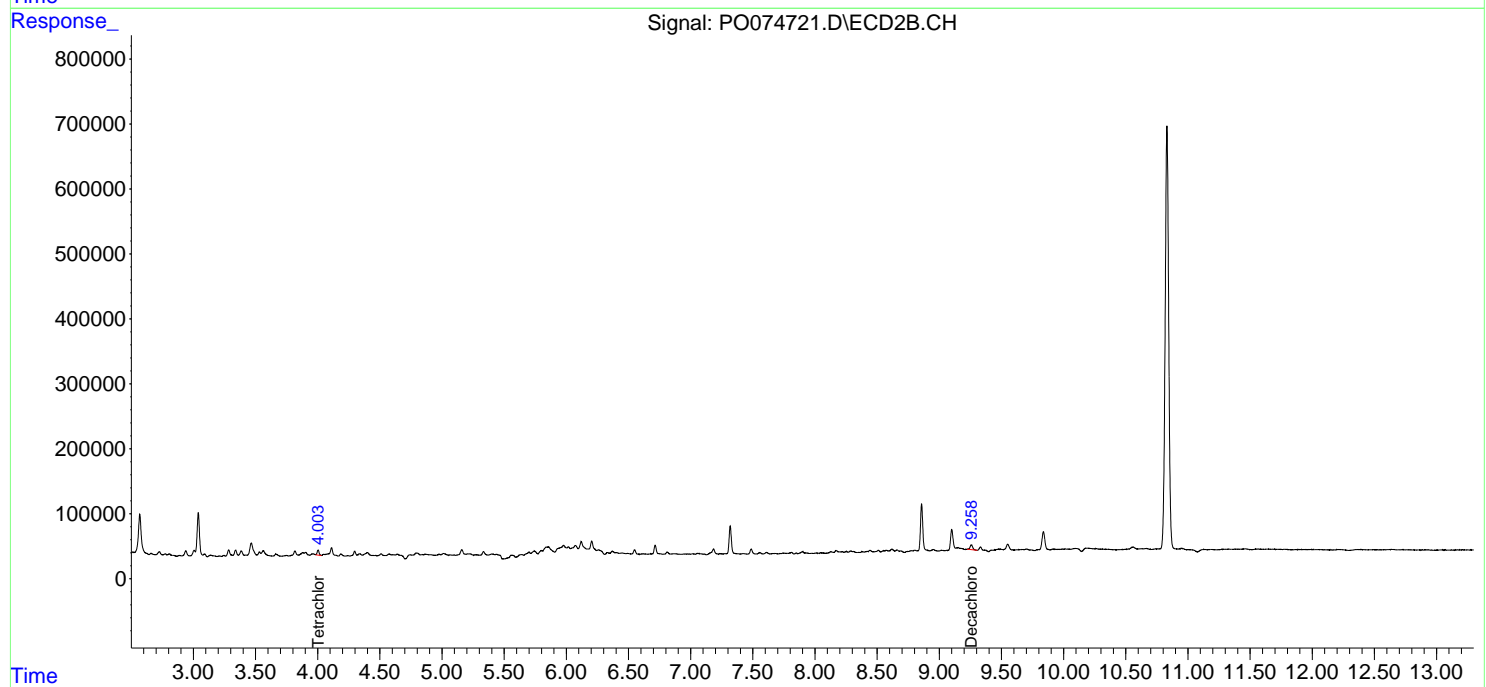
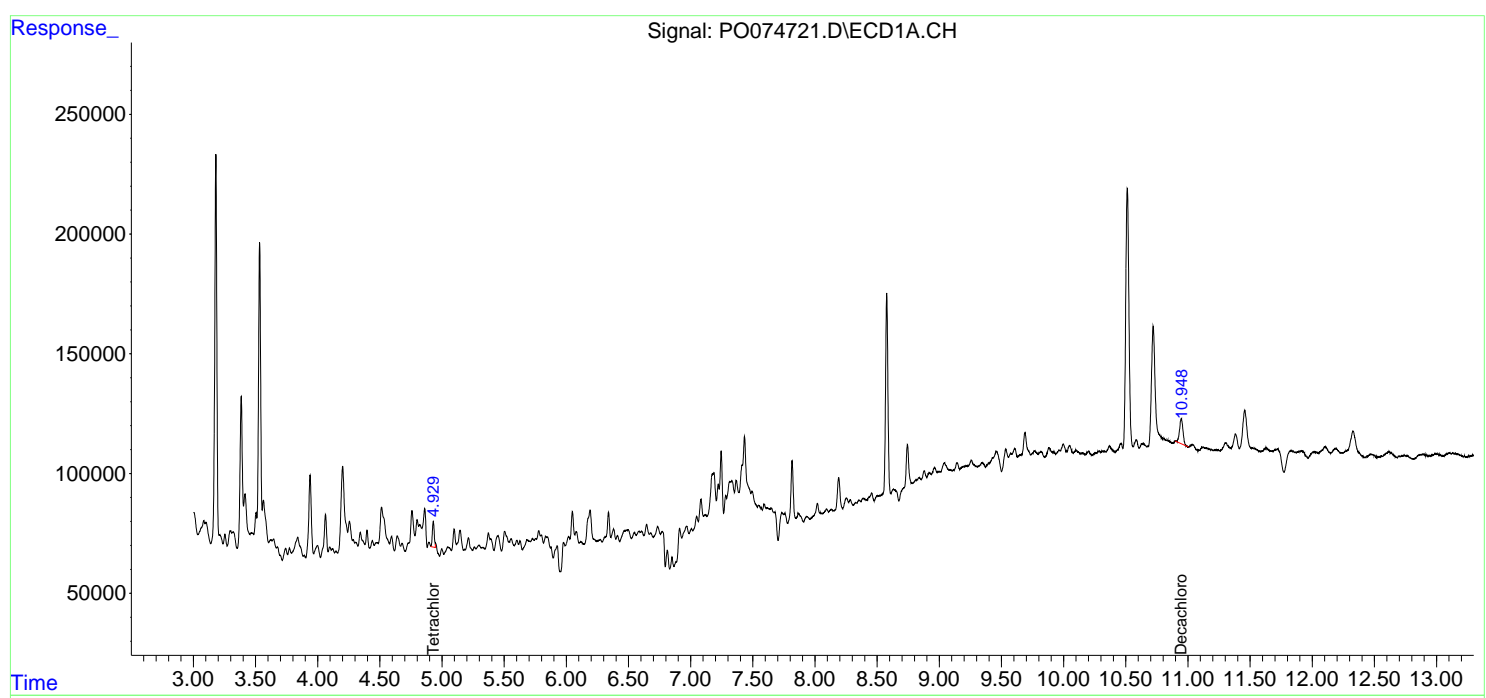
Data Path : Z:\pestpcbsrv\HPCHEM1\ECD_0\Data\P0011421\
 Data File : P0074721.D
 Signal(s) : Signal #1: ECD1A.CH Signal #2: ECD2B.CH
 Acq On : 15 Jan 2021 4:54
 Operator : AJ/MA
 Sample : M1041-07 10X
 Misc :
 ALS Vial : 51 Sample Multiplier: 1

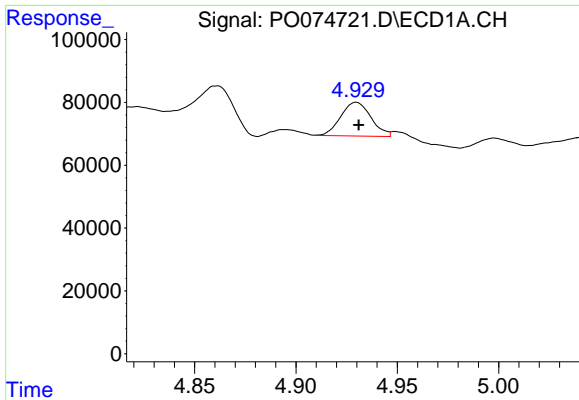
Instrument :
 ECD_O
ClientSampled :
 50129

Manual Integrations
APPROVED
 Ankita
 1/15/2021 12:45:21 PM

Integration File signal 1: autoint1.e
 Integration File signal 2: autoint2.e
 Quant Time: Jan 15 07:06:51 2021
 Quant Method : Z:\pestpcbsrv\HPCHEM1\ECD_0\methods\P0011121.M
 Quant Title : GC EXTRACTABLES
 QLast Update : Tue Jan 12 06:02:45 2021
 Response via : Initial Calibration
 Integrator: ChemStation 6890 Scale Mode: Small noise peaks clipped

Volume Inj. : 2 µl
 Signal #1 Phase : ZB-MR1 Signal #2 Phase: ZB-MR2
 Signal #1 Info : 30Mx0.32mmx 0.50µ Signal #2 Info : 30M x 0.32mm x 0.25µm

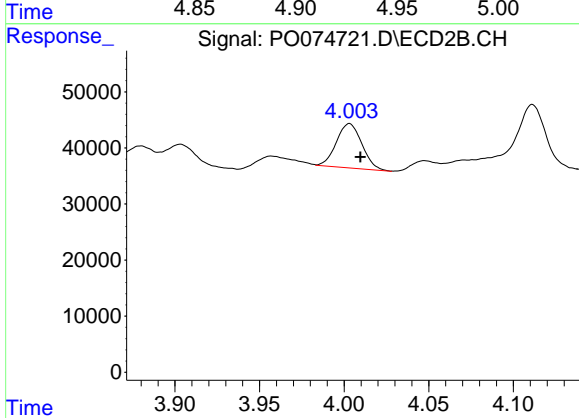




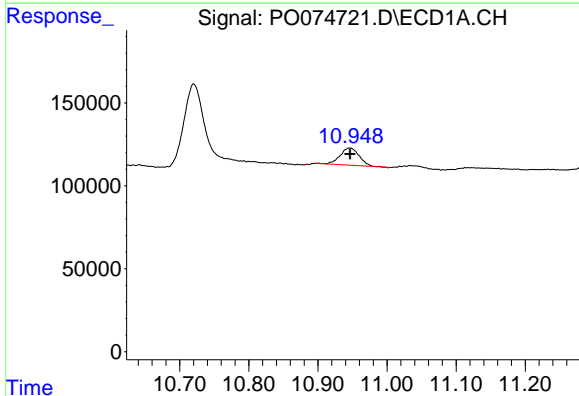
#1 Tetrachloro-m-xylene
 R.T.: 4.929 min
 Delta R.T.: -0.002 min
 Response: 112455
 Conc: 1.07 ng/ml m

Instrument :
 ECD_O
 ClientSampled :
 50129

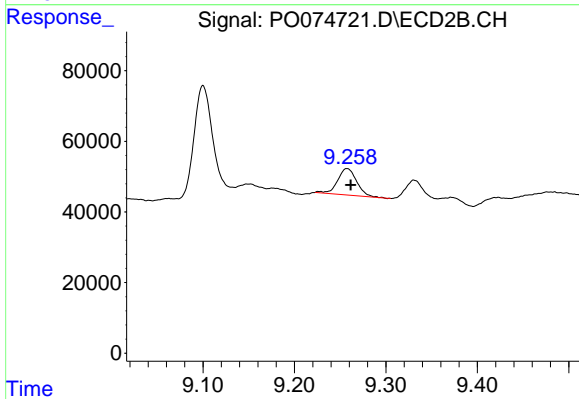
Manual Integrations
 APPROVED
 Ankita
 1/15/2021 12:45:21 PM



#1 Tetrachloro-m-xylene
 R.T.: 4.003 min
 Delta R.T.: -0.007 min
 Response: 83064
 Conc: 1.48 ng/ml m



#2 Decachlorobiphenyl
 R.T.: 10.946 min
 Delta R.T.: 0.000 min
 Response: 194931
 Conc: 1.92 ng/ml



#2 Decachlorobiphenyl
 R.T.: 9.258 min
 Delta R.T.: -0.004 min
 Response: 106840
 Conc: 1.95 ng/ml