

Data Path : Z:\pestpcbsrv\HPCHEM1\ECD_0\Data\P0011422\
 Data File : P0084268.D
 Signal(s) : Signal #1: ECD1A.CH Signal #2: ECD2B.CH
 Acq On : 14 Jan 2022 19:12
 Operator : AJ\MA
 Sample : N1125-16 10X
 Misc :
 ALS Vial : 23 Sample Multiplier: 1

Instrument :
 ECD_0
ClientSampleId :
 IRV-2022-40B

Manual Integrations
APPROVED

Reviewed By :Ankita Jodhani 01/17/2022
 Supervised By :mohammad ahmed 01/17/2022

Integration File signal 1: autoint1.e
 Integration File signal 2: autoint2.e
 Quant Time: Jan 15 00:01:57 2022
 Quant Method : Z:\pestpcbsrv\HPCHEM1\ECD_0\methods\P0011322.M
 Quant Title : GC EXTRACTABLES
 QLast Update : Fri Jan 14 22:49:17 2022
 Response via : Initial Calibration
 Integrator: ChemStation 6890 Scale Mode: Small noise peaks clipped

Volume Inj. : 2 µl
 Signal #1 Phase : ZB-MR1 Signal #2 Phase: ZB-MR2
 Signal #1 Info : 30Mx0.32mmx 0.50µ Signal #2 Info : 30M x 0.32mm x 0.25µm

Compound	RT#1	RT#2	Resp#1	Resp#2	ng/ml	ng/ml

System Monitoring Compounds						
1) SA Tetrachlo...	6.523	5.311	155777	39271	1.725m	1.899m
2) SA Decachlor...	13.776	11.318	150050	27678	2.684m	1.565m#

Target Compounds

(f)=RT Delta > 1/2 Window (#)=Amounts differ by > 25% (m)=manual int.

Data Path : Z:\pestpcbsrv\HPCHEM1\ECD_0\Data\PO011422\
 Data File : PO084268.D
 Signal(s) : Signal #1: ECD1A.CH Signal #2: ECD2B.CH
 Acq On : 14 Jan 2022 19:12
 Operator : AJ\MA
 Sample : N1125-16 10X
 Misc :
 ALS Vial : 23 Sample Multiplier: 1

Instrument :

ECD_0

ClientSampleId :

IRV-2022-40B

Manual Integrations

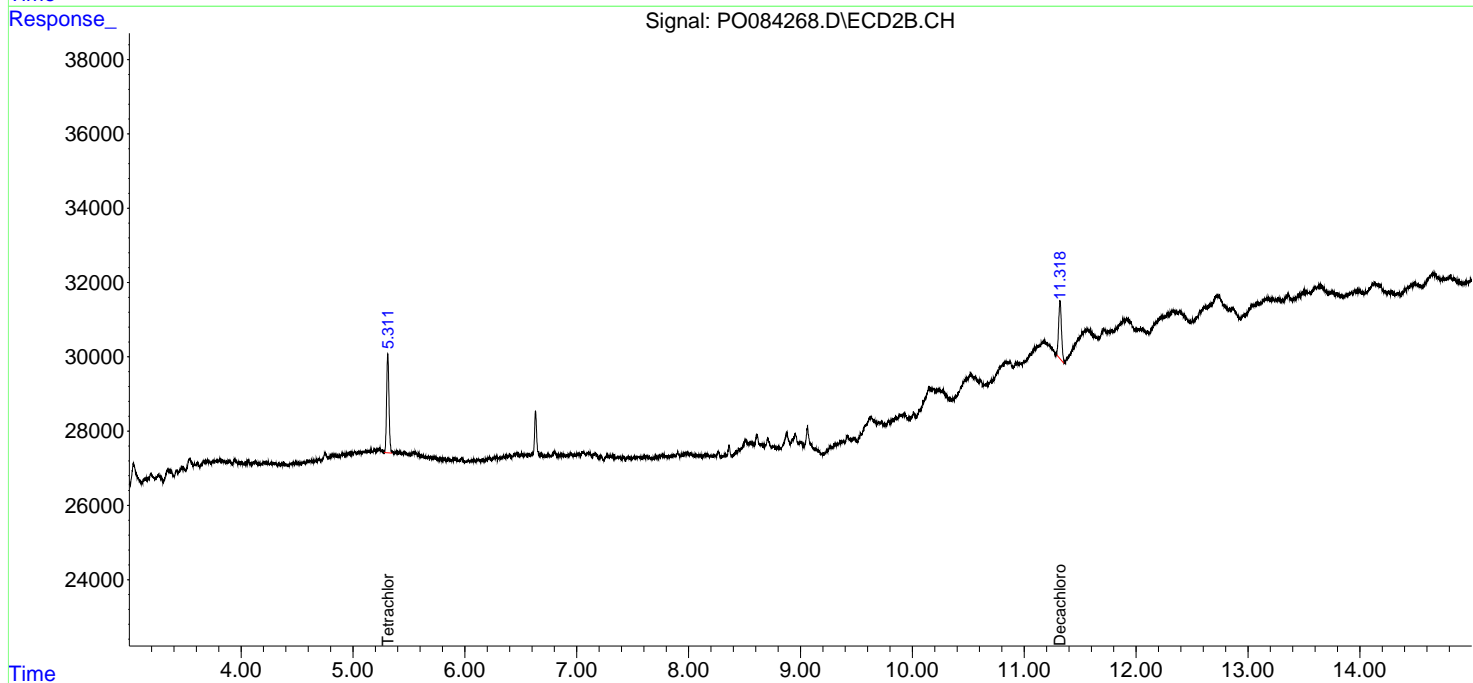
APPROVED

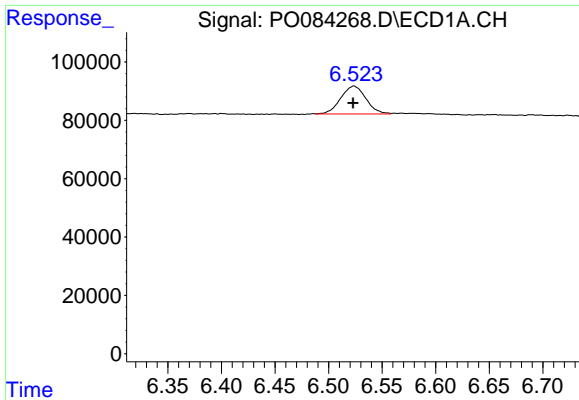
Reviewed By :Ankita Jodhani 01/17/2022

Supervised By :mohammad ahmed 01/17/2022

Integration File signal 1: autoint1.e
 Integration File signal 2: autoint2.e
 Quant Time: Jan 15 00:01:57 2022
 Quant Method : Z:\pestpcbsrv\HPCHEM1\ECD_0\methods\PO011322.M
 Quant Title : GC EXTRACTABLES
 QLast Update : Fri Jan 14 22:49:17 2022
 Response via : Initial Calibration
 Integrator: ChemStation 6890 Scale Mode: Small noise peaks clipped

Volume Inj. : 2 µl
 Signal #1 Phase : ZB-MR1 Signal #2 Phase: ZB-MR2
 Signal #1 Info : 30Mx0.32mmx 0.50µ Signal #2 Info : 30M x 0.32mm x 0.25µm



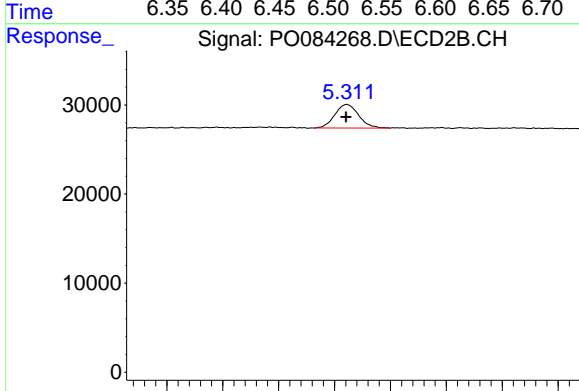


#1 Tetrachloro-m-xylene
 R.T.: 6.523 min
 Delta R.T.: 0.000 min
 Response: 155777
 Conc: 1.73 ng/ml

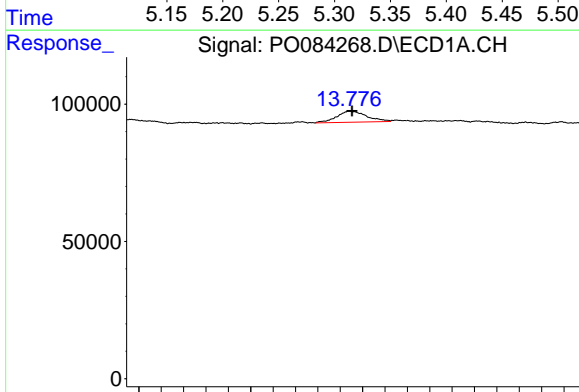
Instrument :
 ECD_O
 ClientSampleId :
 IRV-2022-40B

Manual Integrations
 APPROVED

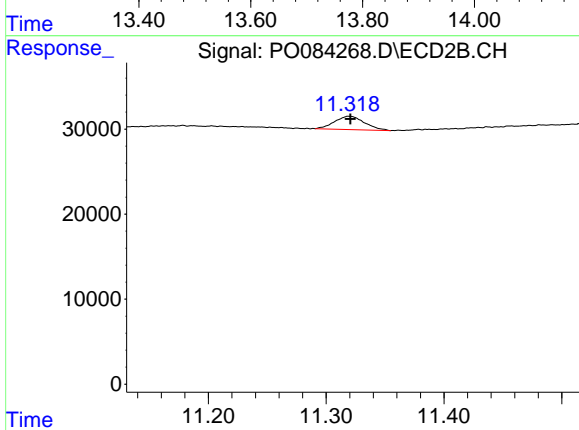
Reviewed By :Ankita Jodhani 01/17/2022
 Supervised By :mohammad ahmed 01/17/2022



#1 Tetrachloro-m-xylene
 R.T.: 5.311 min
 Delta R.T.: 0.000 min
 Response: 39271
 Conc: 1.90 ng/ml m



#2 Decachlorobiphenyl
 R.T.: 13.776 min
 Delta R.T.: -0.005 min
 Response: 150050
 Conc: 2.68 ng/ml m



#2 Decachlorobiphenyl
 R.T.: 11.318 min
 Delta R.T.: -0.002 min
 Response: 27678
 Conc: 1.57 ng/ml m