

Data Path : Z:\pestpcbsrv\HPCHEM1\ECD_0\Data\P0011521\
 Data File : P0074739.D
 Signal(s) : Signal #1: ECD1A.CH Signal #2: ECD2B.CH
 Acq On : 15 Jan 2021 11:18
 Operator : AJ/MA
 Sample : M1096-02
 Misc :
 ALS Vial : 12 Sample Multiplier: 1

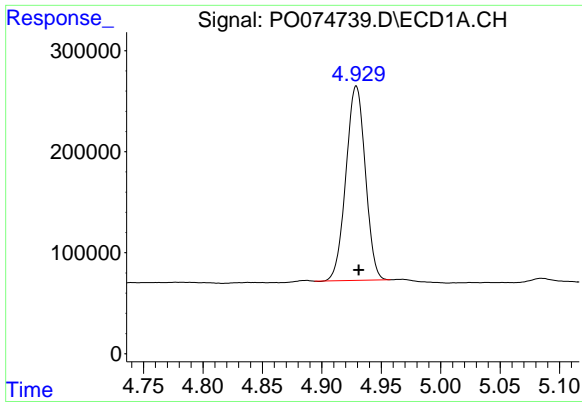
Instrument :
 ECD_0
 ClientSampled :
 263K-29B

Integration File signal 1: autoint1.e
 Integration File signal 2: autoint2.e
 Quant Time: Jan 15 16:45:46 2021
 Quant Method : Z:\pestpcbsrv\HPCHEM1\ECD_0\methods\P0011121.M
 Quant Title : GC EXTRACTABLES
 QLast Update : Tue Jan 12 06:02:45 2021
 Response via : Initial Calibration
 Integrator: ChemStation 6890 Scale Mode: Small noise peaks clipped

Volume Inj. : 2 µl
 Signal #1 Phase : ZB-MR2 Signal #2 Phase: ZB-MR2
 Signal #1 Info : 30Mx0.32mmx 0.50µ Signal #2 Info : 30M x 0.32mm x 0.25µm

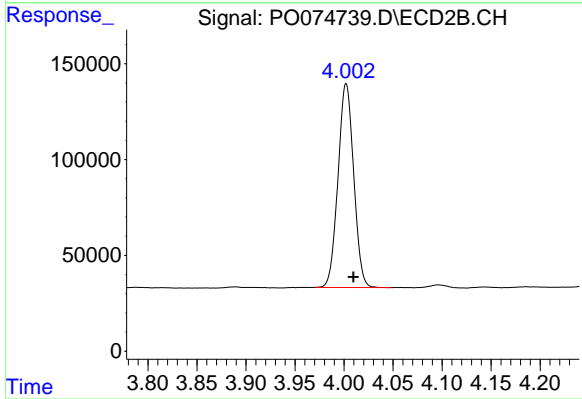
Compound	RT#1	RT#2	Resp#1	Resp#2	ng/ml	ng/ml
System Monitoring Compounds						
1) SA Tetrachlo...	4.929	4.002	2182365	1183482	20.682	21.039
2) SA Decachlor...	10.945	9.254	1393078	748306	13.726	13.629
Target Compounds						
3) L1 AR-1016-1	0.000	5.271f	0	27289	N.D.	11.931 #
4) L1 AR-1016-2	0.000	5.271	0	27289	N.D.	8.636 #
8) L2 AR-1221-1	5.183	0.000	421330	0	343.019	N.D. #
10) L2 AR-1221-3	5.382	4.443	66532	19036	23.615	11.905 #
11) L3 AR-1232-1	5.382	4.443	66532	19036	29.050	14.522 #
12) L3 AR-1232-2	0.000	5.271	0	27289	N.D.	20.210 #
16) L4 AR-1242-1	0.000	5.271f	0	27289	N.D.	14.806 #
17) L4 AR-1242-2	0.000	5.271	0	27289	N.D.	10.841 #
20) L4 AR-1242-5	0.000	6.111	0	127135	N.D.	72.614 #
21) L5 AR-1248-1	0.000	5.271f	0	27289	N.D.	19.842 #
24) L5 AR-1248-4	7.197	0.000	1126532	0	252.615	N.D. #
26) L6 AR-1254-1	7.163	6.111	93902	127135	21.350	35.198 #
27) L6 AR-1254-2	7.393	6.269	520903	312281	76.482	100.201 #
28) L6 AR-1254-3	7.778	6.685	839589	625985	119.696	127.650
29) L6 AR-1254-4	8.074	6.923	866187	503750	142.825	145.266
30) L6 AR-1254-5	8.503	7.349	2283033	2193918	393.021	484.743
31) L7 AR-1260-1	7.944	6.821	652422	652665	130.779	204.579 #
32) L7 AR-1260-2	8.210	7.018	1514137	926785	222.598	218.013
33) L7 AR-1260-3	8.574	7.169	435471	439845	75.976	122.062 #
34) L7 AR-1260-4	8.801	7.649	976271	219191	178.434	69.999 #
35) L7 AR-1260-5	9.135	7.896	456955	325135	36.571	40.904
36) L8 AR-1262-1	8.574	7.349	435471	2193918	48.906	862.193 #
37) L8 AR-1262-2	9.135	7.896	456955	325135	29.846	35.362
38) L8 AR-1262-3	9.467f	8.182	463761	73973	46.303	18.707 #
39) L8 AR-1262-4	9.517f	8.241	213315	345345	28.643	52.126 #
40) L8 AR-1262-5	10.204	8.738	61825	46859	11.818	15.178 #
41) L9 AR-1268-1	9.467f	8.182	463761	73973	24.822	6.608 #
42) L9 AR-1268-2	9.517f	8.241	213315	345345	13.370	36.097 #
43) L9 AR-1268-3	0.000	8.451	0	32993	N.D.	3.971 #
44) L9 AR-1268-4	10.204	8.738	61825	46859	10.553	13.507 #
45) L9 AR-1268-5	10.614	9.014	138924	84582	3.324	3.572

(f)=RT Delta > 1/2 Window (#)=Amounts differ by > 25% (m)=manual int.

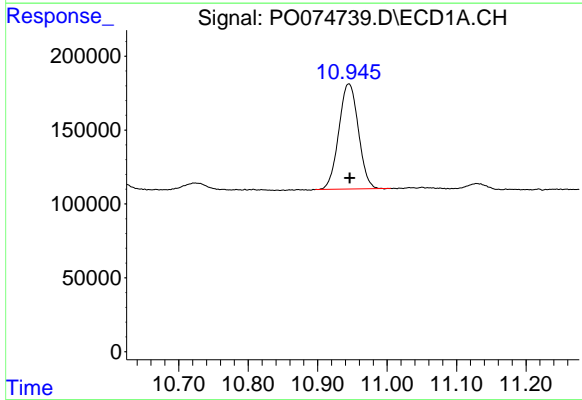


#1 Tetrachloro-m-xylene
 R.T.: 4.929 min
 Delta R.T.: -0.002 min
 Response: 2182365
 Conc: 20.68 ng/ml

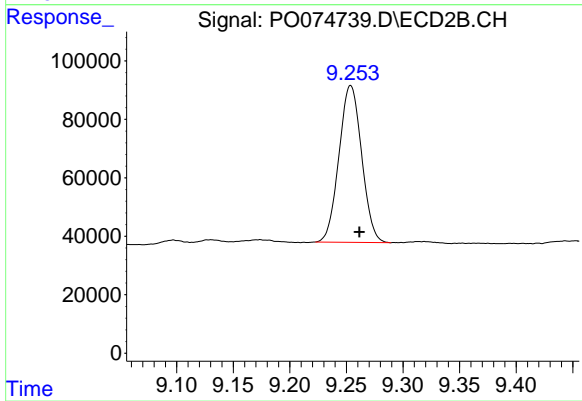
Instrument :
 ECD_O
 ClientSampled :
 263K-29B



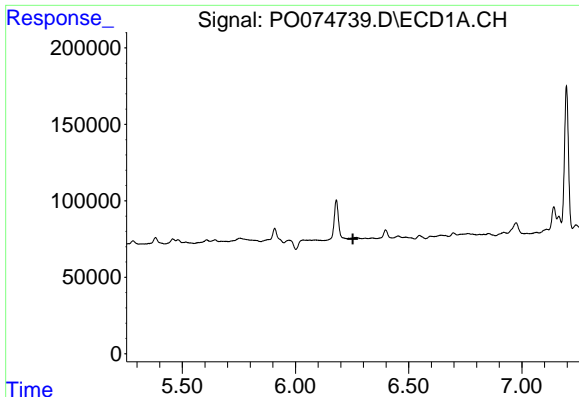
#1 Tetrachloro-m-xylene
 R.T.: 4.002 min
 Delta R.T.: -0.008 min
 Response: 1183482
 Conc: 21.04 ng/ml



#2 Decachlorobiphenyl
 R.T.: 10.945 min
 Delta R.T.: -0.002 min
 Response: 1393078
 Conc: 13.73 ng/ml



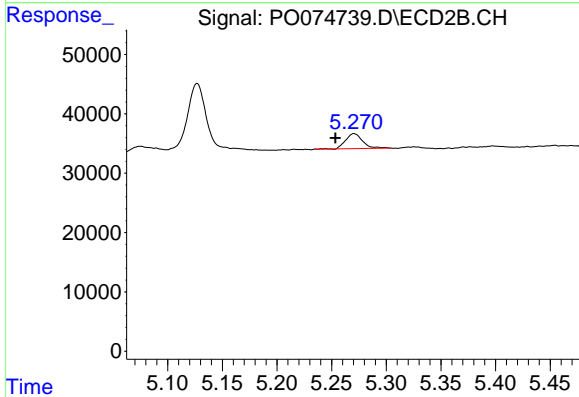
#2 Decachlorobiphenyl
 R.T.: 9.254 min
 Delta R.T.: -0.008 min
 Response: 748306
 Conc: 13.63 ng/ml



#3 AR-1016-1

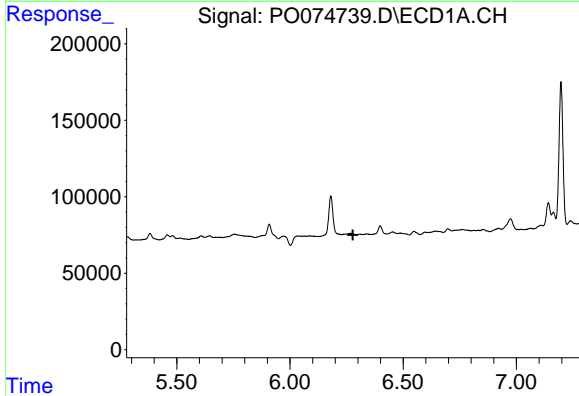
R.T.: 0.000 min
 Exp R.T. : 6.254 min
 Response: 0
 Conc: N.D.

Instrument :
 ECD_O
 ClientSampleId :
 263K-29B



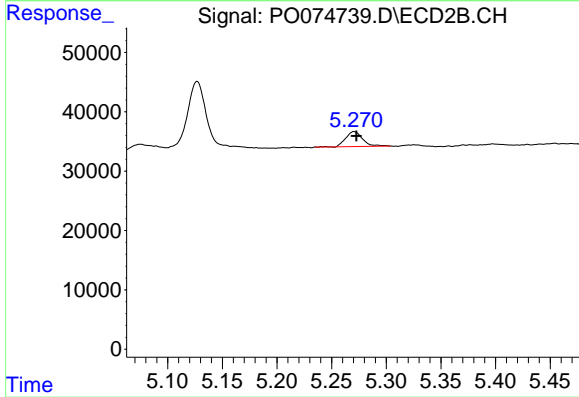
#3 AR-1016-1

R.T.: 5.271 min
 Delta R.T.: 0.017 min
 Response: 27289
 Conc: 11.93 ng/ml



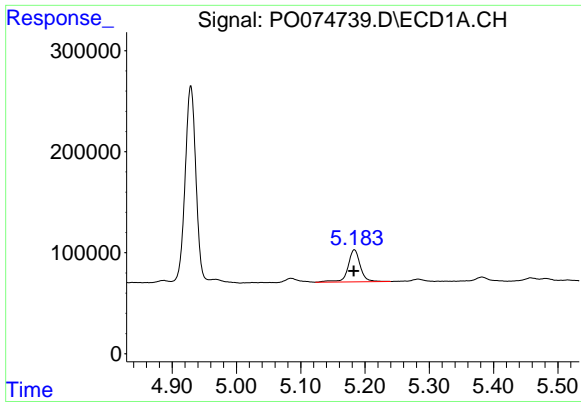
#4 AR-1016-2

R.T.: 0.000 min
 Exp R.T. : 6.277 min
 Response: 0
 Conc: N.D.



#4 AR-1016-2

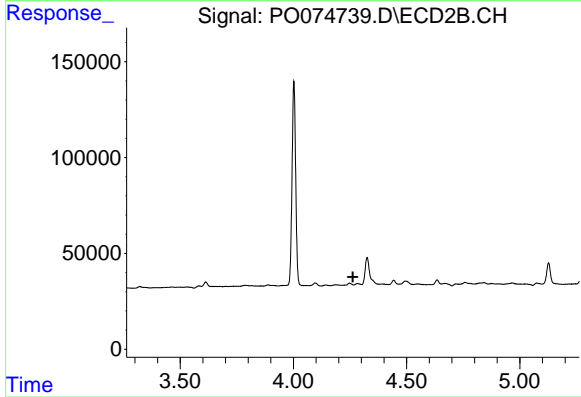
R.T.: 5.271 min
 Delta R.T.: -0.002 min
 Response: 27289
 Conc: 8.64 ng/ml



#8 AR-1221-1

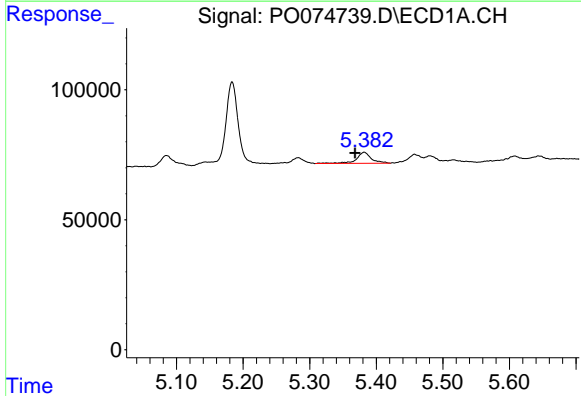
R.T.: 5.183 min
 Delta R.T.: 0.000 min
 Response: 421330
 Conc: 343.02 ng/ml

Instrument :
 ECD_O
 ClientSampled :
 263K-29B



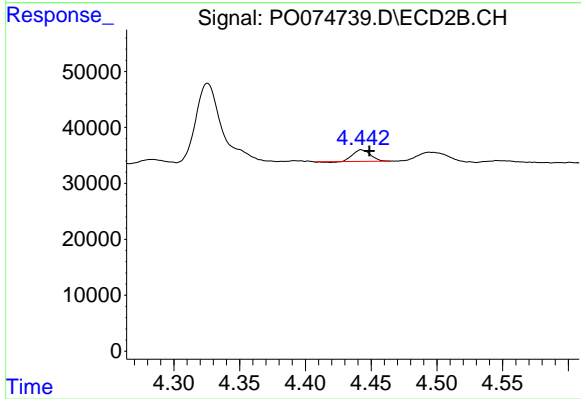
#8 AR-1221-1

R.T.: 0.000 min
 Exp R.T. : 4.263 min
 Response: 0
 Conc: N.D.



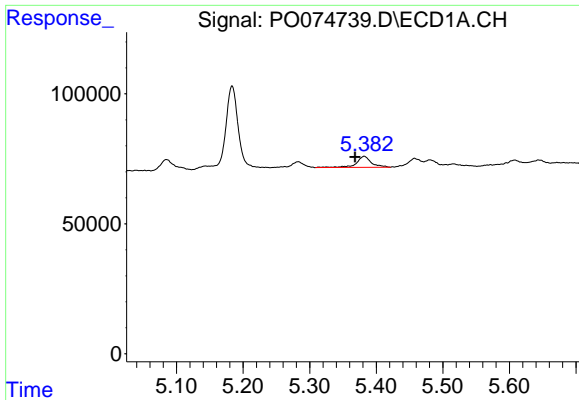
#10 AR-1221-3

R.T.: 5.382 min
 Delta R.T.: 0.014 min
 Response: 66532
 Conc: 23.62 ng/ml



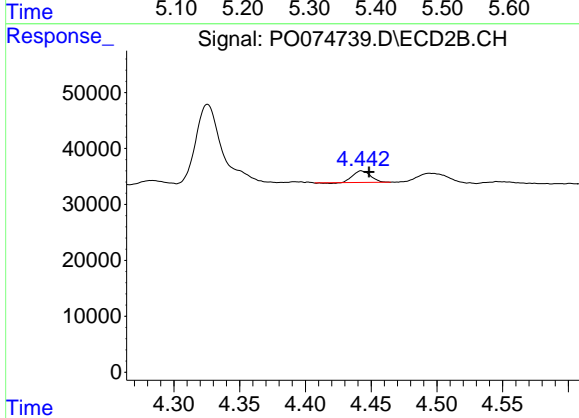
#10 AR-1221-3

R.T.: 4.443 min
 Delta R.T.: -0.006 min
 Response: 19036
 Conc: 11.90 ng/ml

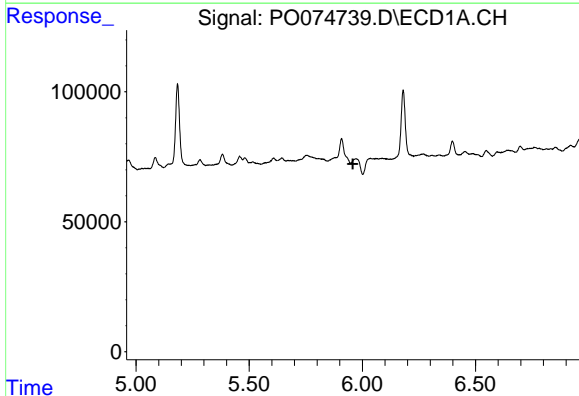


#11 AR-1232-1
 R.T.: 5.382 min
 Delta R.T.: 0.014 min
 Response: 66532
 Conc: 29.05 ng/ml

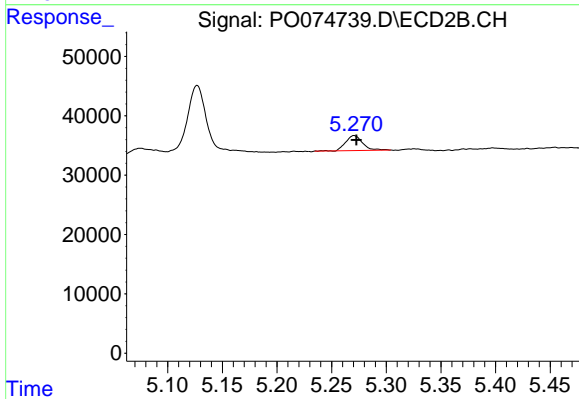
Instrument :
 ECD_O
 ClientSampleId :
 263K-29B



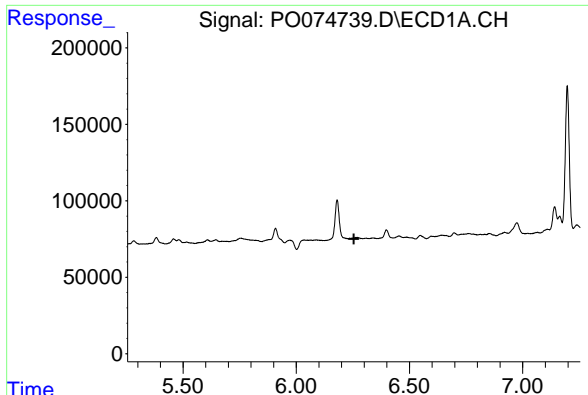
#11 AR-1232-1
 R.T.: 4.443 min
 Delta R.T.: -0.006 min
 Response: 19036
 Conc: 14.52 ng/ml



#12 AR-1232-2
 R.T.: 0.000 min
 Exp R.T. : 5.958 min
 Response: 0
 Conc: N.D.



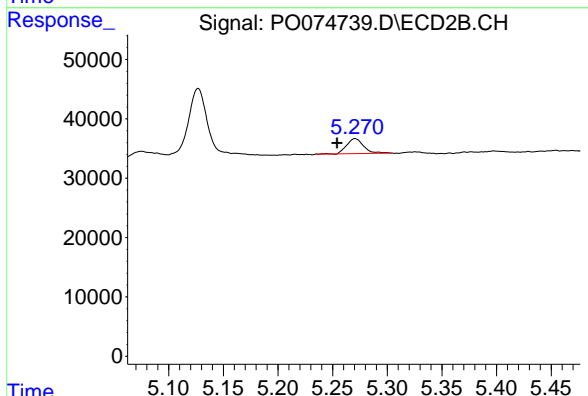
#12 AR-1232-2
 R.T.: 5.271 min
 Delta R.T.: -0.002 min
 Response: 27289
 Conc: 20.21 ng/ml



#16 AR-1242-1

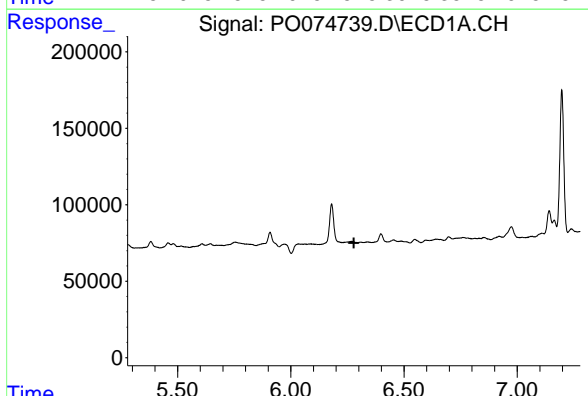
R.T.: 0.000 min
 Exp R.T. : 6.255 min
 Response: 0
 Conc: N.D.

Instrument :
 ECD_O
 ClientSampleId :
 263K-29B



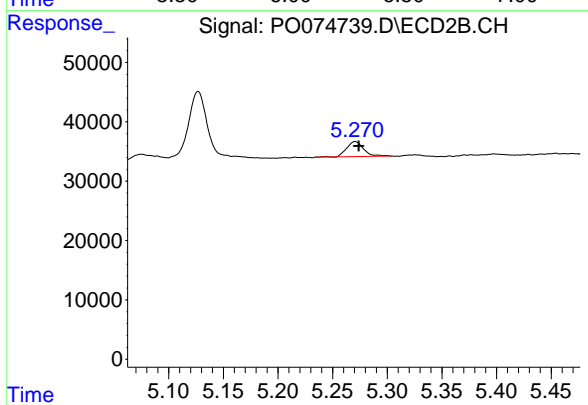
#16 AR-1242-1

R.T.: 5.271 min
 Delta R.T.: 0.017 min
 Response: 27289
 Conc: 14.81 ng/ml



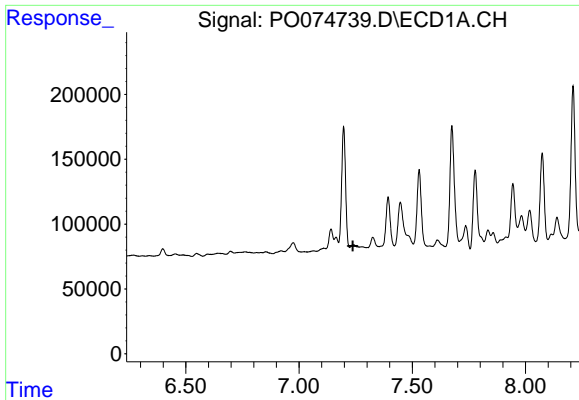
#17 AR-1242-2

R.T.: 0.000 min
 Exp R.T. : 6.279 min
 Response: 0
 Conc: N.D.



#17 AR-1242-2

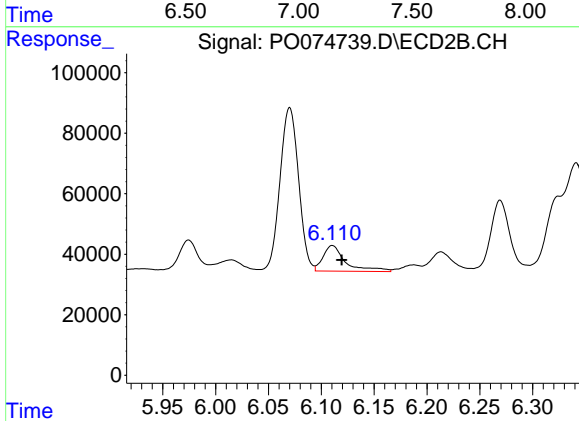
R.T.: 5.271 min
 Delta R.T.: -0.003 min
 Response: 27289
 Conc: 10.84 ng/ml



#20 AR-1242-5

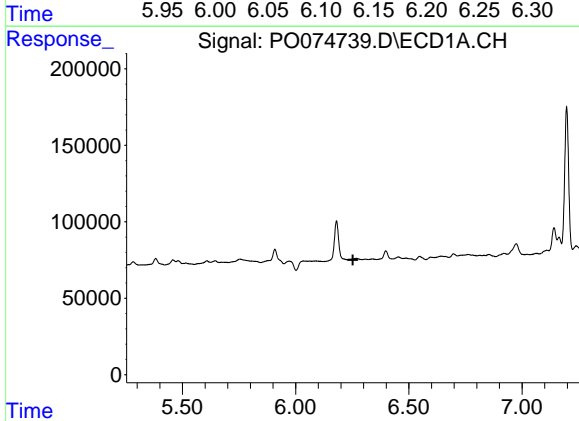
R.T.: 0.000 min
 Exp R.T.: 7.238 min
 Response: 0
 Conc: N.D.

Instrument :
 ECD_O
 ClientSampleId :
 263K-29B



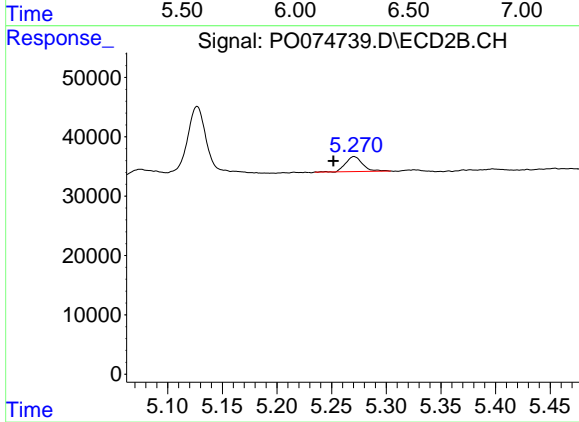
#20 AR-1242-5

R.T.: 6.111 min
 Delta R.T.: -0.009 min
 Response: 127135
 Conc: 72.61 ng/ml



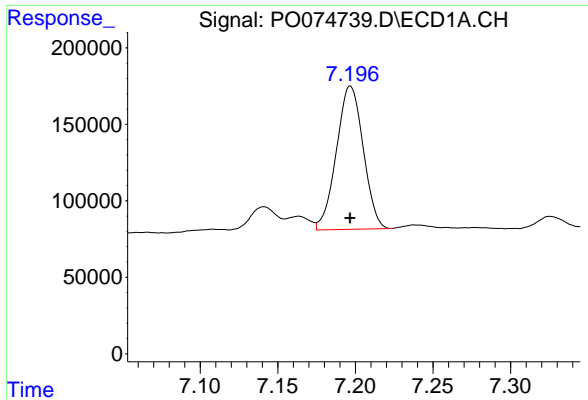
#21 AR-1248-1

R.T.: 0.000 min
 Exp R.T.: 6.253 min
 Response: 0
 Conc: N.D.



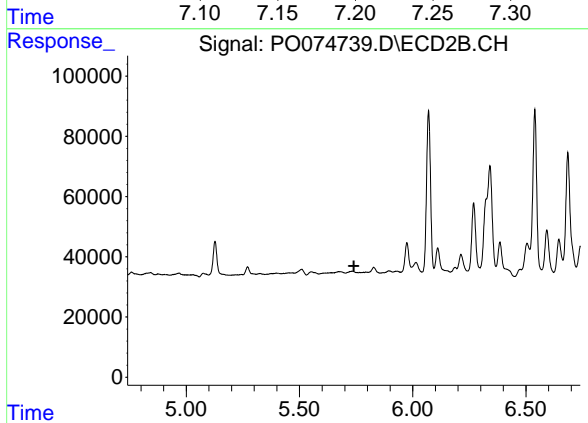
#21 AR-1248-1

R.T.: 5.271 min
 Delta R.T.: 0.019 min
 Response: 27289
 Conc: 19.84 ng/ml

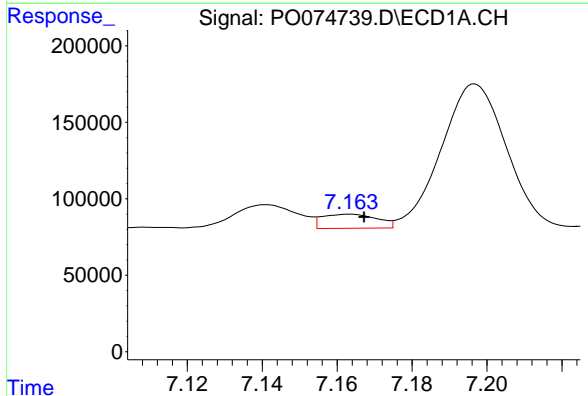


#24 AR-1248-4
 R.T.: 7.197 min
 Delta R.T.: 0.000 min
 Response: 1126532
 Conc: 252.61 ng/ml

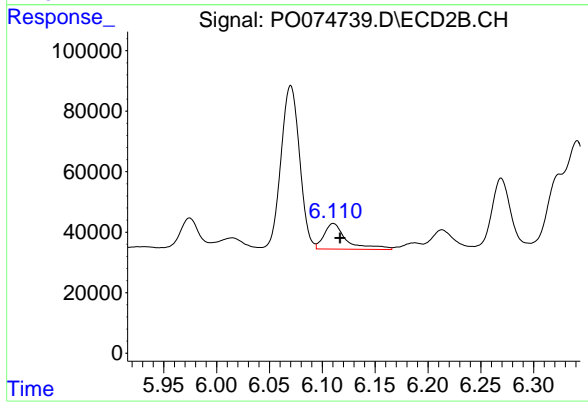
Instrument :
 ECD_O
 ClientSampleId :
 263K-29B



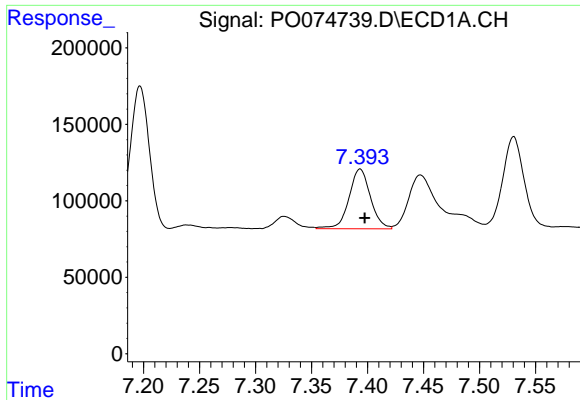
#24 AR-1248-4
 R.T.: 0.000 min
 Exp R.T. : 5.740 min
 Response: 0
 Conc: N.D.



#26 AR-1254-1
 R.T.: 7.163 min
 Delta R.T.: -0.004 min
 Response: 93902
 Conc: 21.35 ng/ml

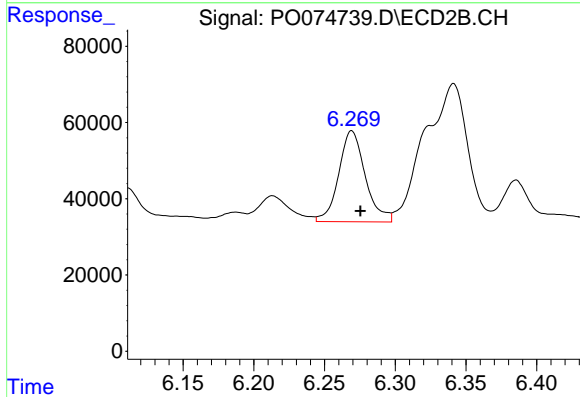


#26 AR-1254-1
 R.T.: 6.111 min
 Delta R.T.: -0.006 min
 Response: 127135
 Conc: 35.20 ng/ml

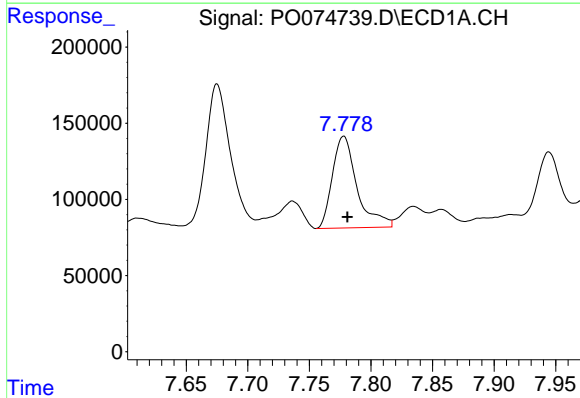


#27 AR-1254-2
 R.T.: 7.393 min
 Delta R.T.: -0.004 min
 Response: 520903
 Conc: 76.48 ng/ml

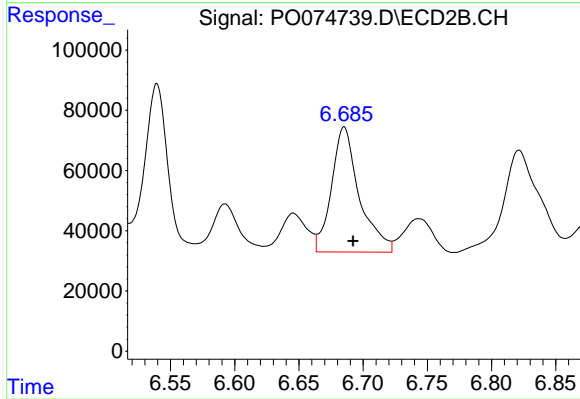
Instrument :
 ECD_O
 ClientSampled :
 263K-29B



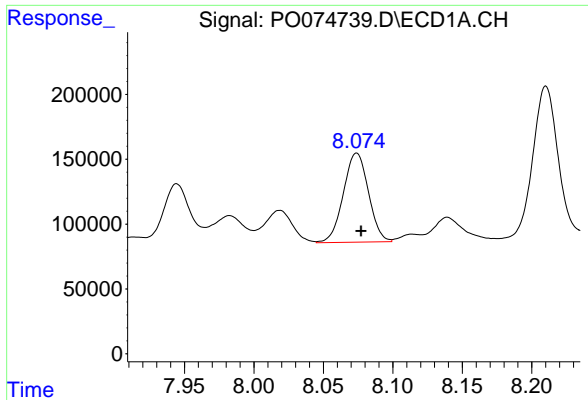
#27 AR-1254-2
 R.T.: 6.269 min
 Delta R.T.: -0.006 min
 Response: 312281
 Conc: 100.20 ng/ml



#28 AR-1254-3
 R.T.: 7.778 min
 Delta R.T.: -0.003 min
 Response: 839589
 Conc: 119.70 ng/ml



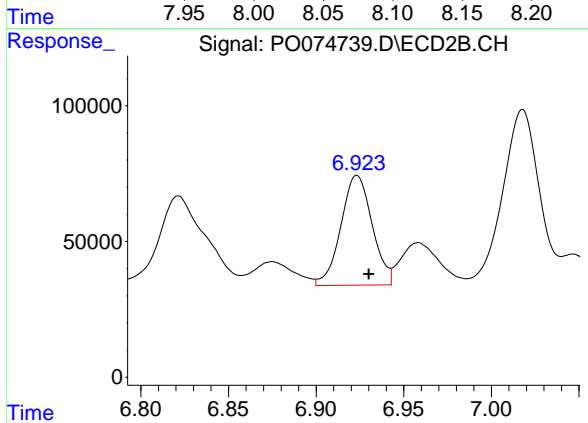
#28 AR-1254-3
 R.T.: 6.685 min
 Delta R.T.: -0.007 min
 Response: 625985
 Conc: 127.65 ng/ml



#29 AR-1254-4

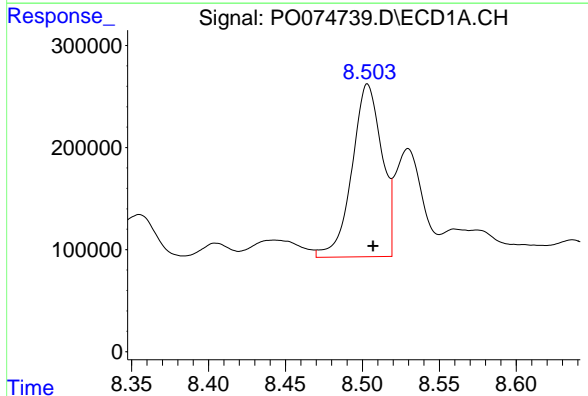
R.T.: 8.074 min
 Delta R.T.: -0.003 min
 Response: 866187
 Conc: 142.83 ng/ml

Instrument :
 ECD_O
 ClientSampled :
 263K-29B



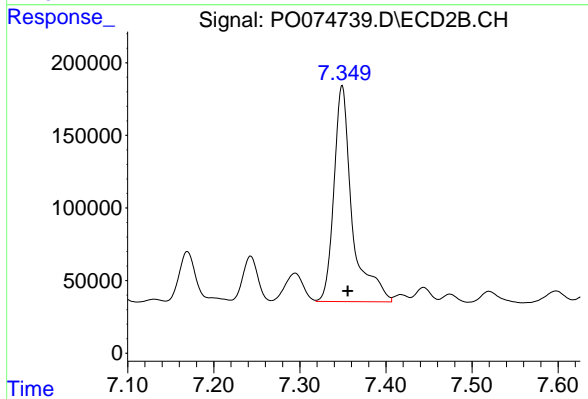
#29 AR-1254-4

R.T.: 6.923 min
 Delta R.T.: -0.007 min
 Response: 503750
 Conc: 145.27 ng/ml



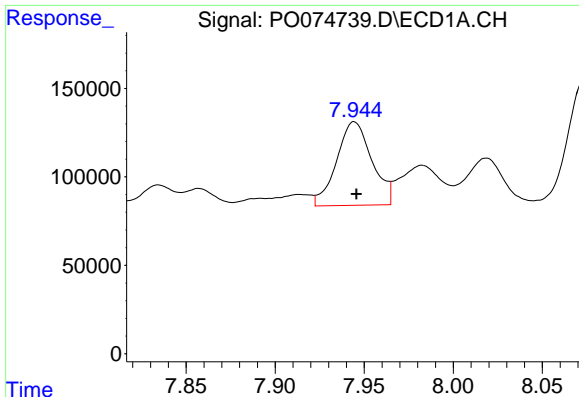
#30 AR-1254-5

R.T.: 8.503 min
 Delta R.T.: -0.004 min
 Response: 2283033
 Conc: 393.02 ng/ml



#30 AR-1254-5

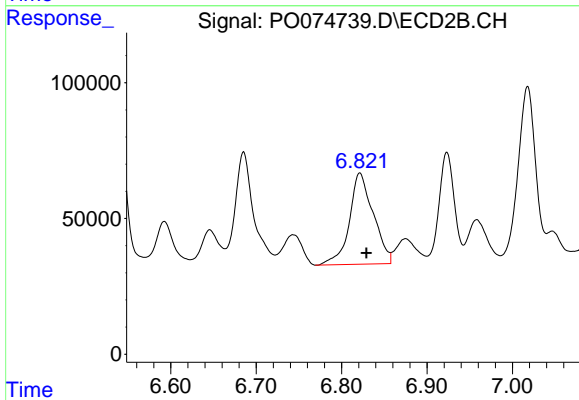
R.T.: 7.349 min
 Delta R.T.: -0.007 min
 Response: 2193918
 Conc: 484.74 ng/ml



#31 AR-1260-1

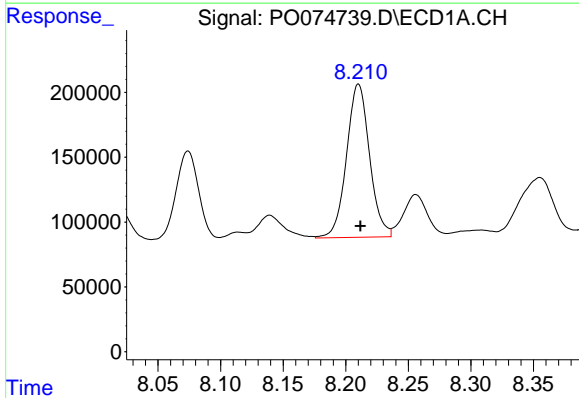
R.T.: 7.944 min
 Delta R.T.: -0.001 min
 Response: 652422
 Conc: 130.78 ng/ml

Instrument :
 ECD_O
 ClientSampleId :
 263K-29B



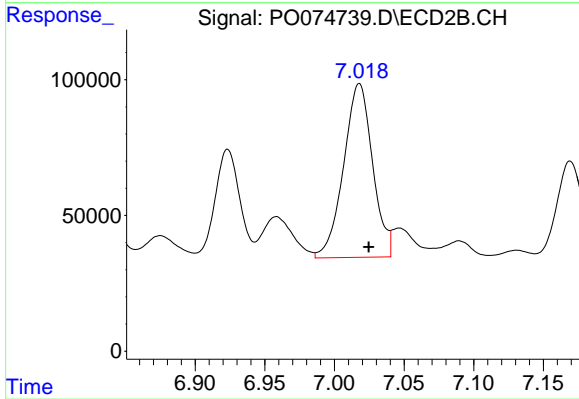
#31 AR-1260-1

R.T.: 6.821 min
 Delta R.T.: -0.007 min
 Response: 652665
 Conc: 204.58 ng/ml



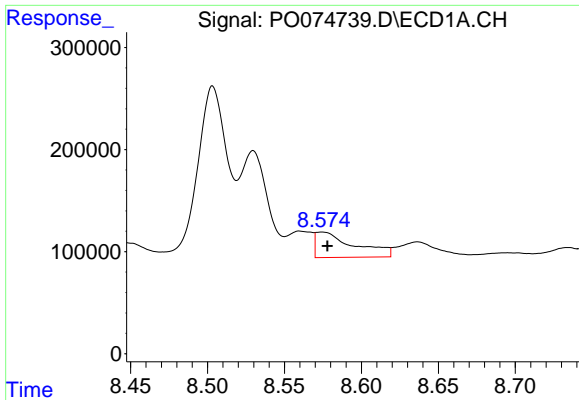
#32 AR-1260-2

R.T.: 8.210 min
 Delta R.T.: -0.001 min
 Response: 1514137
 Conc: 222.60 ng/ml



#32 AR-1260-2

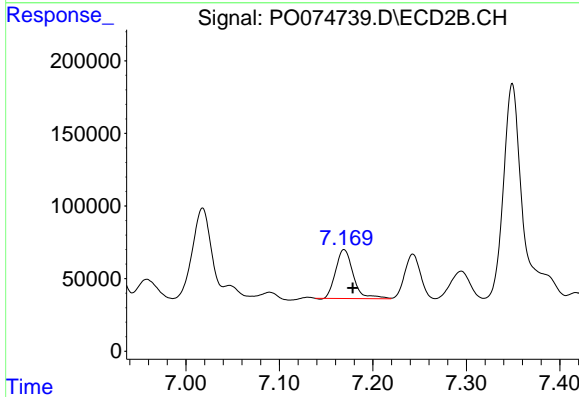
R.T.: 7.018 min
 Delta R.T.: -0.007 min
 Response: 926785
 Conc: 218.01 ng/ml



#33 AR-1260-3

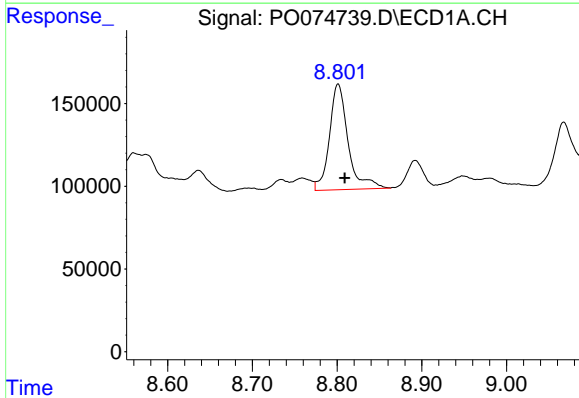
R.T.: 8.574 min
 Delta R.T.: -0.004 min
 Response: 435471
 Conc: 75.98 ng/ml

Instrument :
 ECD_O
 ClientSampleId :
 263K-29B



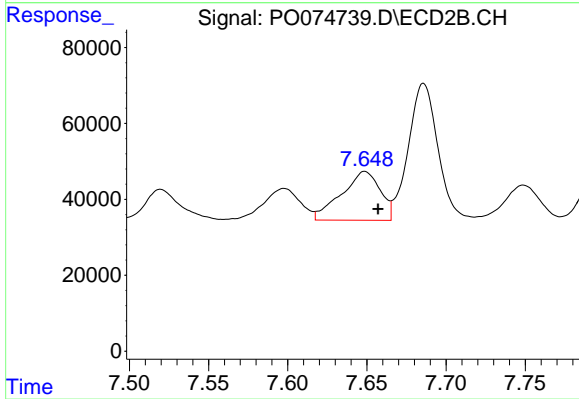
#33 AR-1260-3

R.T.: 7.169 min
 Delta R.T.: -0.009 min
 Response: 439845
 Conc: 122.06 ng/ml



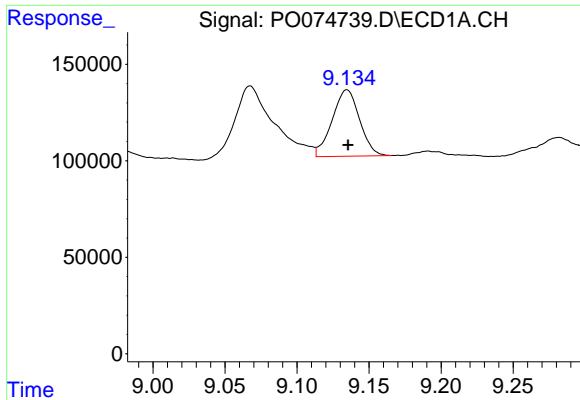
#34 AR-1260-4

R.T.: 8.801 min
 Delta R.T.: -0.008 min
 Response: 976271
 Conc: 178.43 ng/ml



#34 AR-1260-4

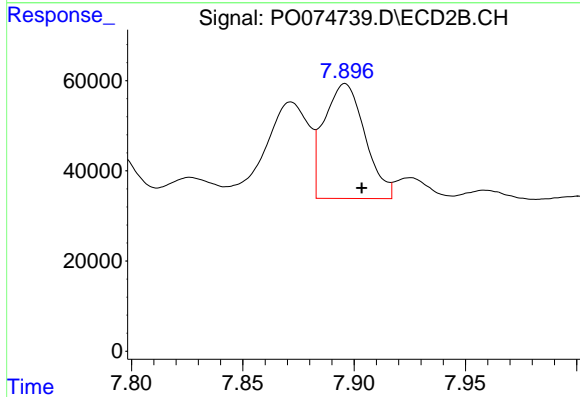
R.T.: 7.649 min
 Delta R.T.: -0.008 min
 Response: 219191
 Conc: 70.00 ng/ml



#35 AR-1260-5

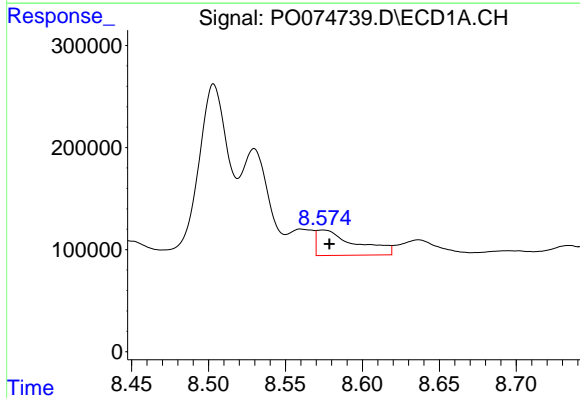
R.T.: 9.135 min
 Delta R.T.: 0.000 min
 Response: 456955
 Conc: 36.57 ng/ml

Instrument :
 ECD_O
 ClientSampled :
 263K-29B



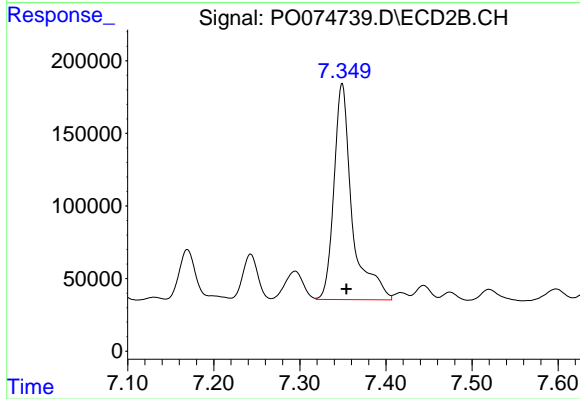
#35 AR-1260-5

R.T.: 7.896 min
 Delta R.T.: -0.007 min
 Response: 325135
 Conc: 40.90 ng/ml



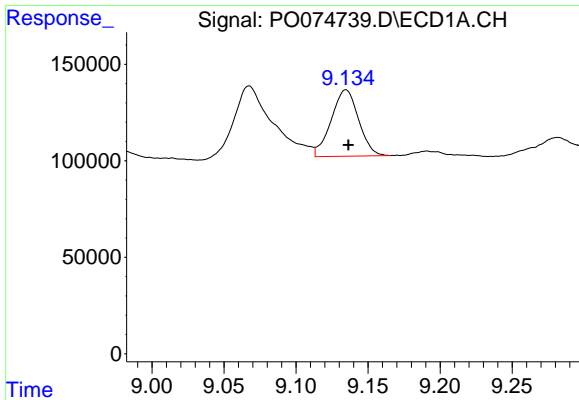
#36 AR-1262-1

R.T.: 8.574 min
 Delta R.T.: -0.004 min
 Response: 435471
 Conc: 48.91 ng/ml



#36 AR-1262-1

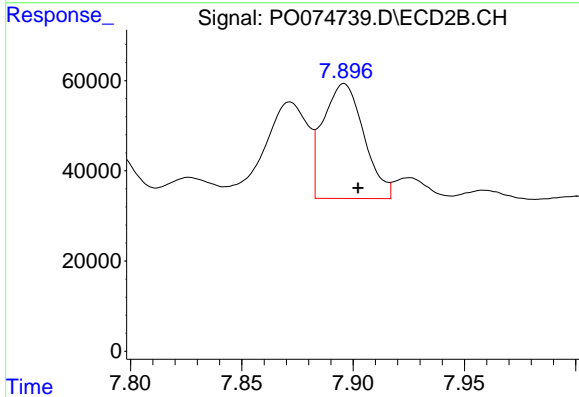
R.T.: 7.349 min
 Delta R.T.: -0.005 min
 Response: 2193918
 Conc: 862.19 ng/ml



#37 AR-1262-2

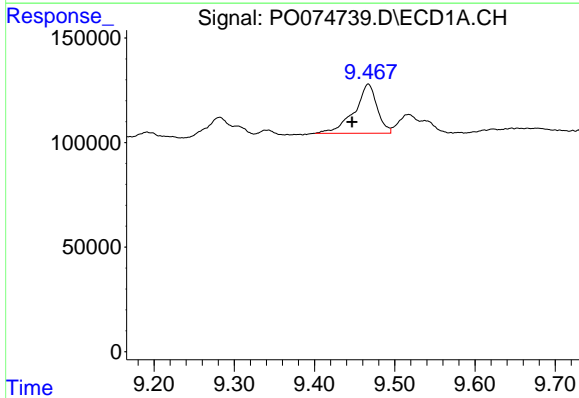
R.T.: 9.135 min
 Delta R.T.: -0.002 min
 Response: 456955
 Conc: 29.85 ng/ml

Instrument :
 ECD_O
 ClientSampleId :
 263K-29B



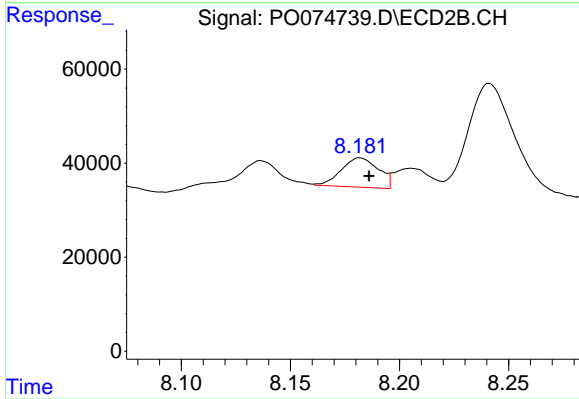
#37 AR-1262-2

R.T.: 7.896 min
 Delta R.T.: -0.006 min
 Response: 325135
 Conc: 35.36 ng/ml



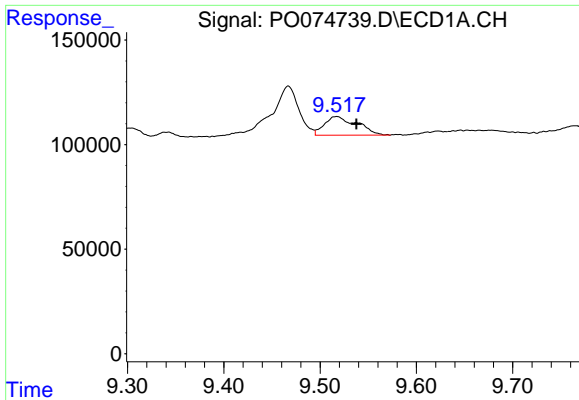
#38 AR-1262-3

R.T.: 9.467 min
 Delta R.T.: 0.020 min
 Response: 463761
 Conc: 46.30 ng/ml



#38 AR-1262-3

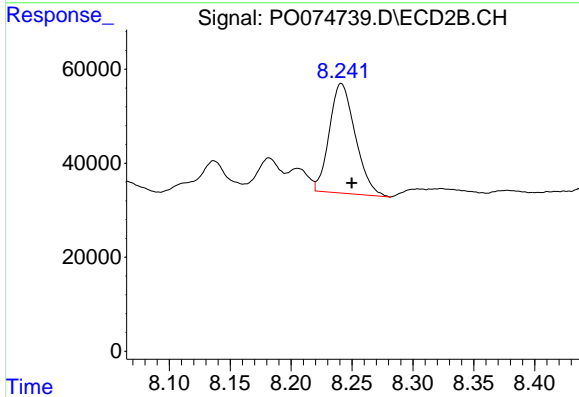
R.T.: 8.182 min
 Delta R.T.: -0.004 min
 Response: 73973
 Conc: 18.71 ng/ml



#39 AR-1262-4

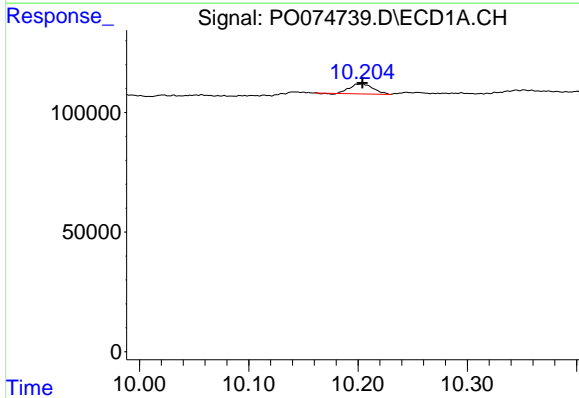
R.T.: 9.517 min
 Delta R.T.: -0.020 min
 Response: 213315
 Conc: 28.64 ng/ml

Instrument :
 ECD_O
 ClientSampleId :
 263K-29B



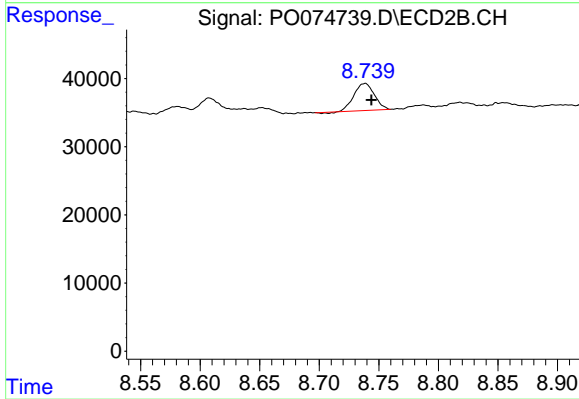
#39 AR-1262-4

R.T.: 8.241 min
 Delta R.T.: -0.009 min
 Response: 345345
 Conc: 52.13 ng/ml



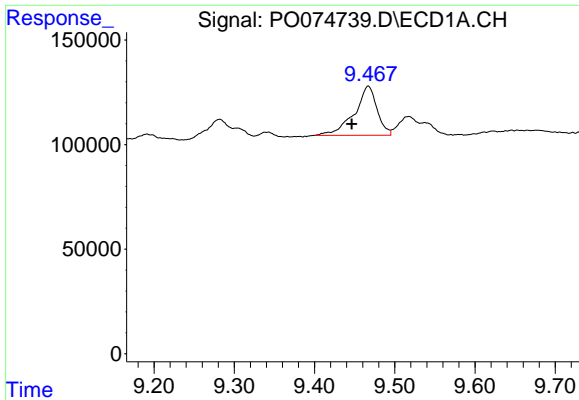
#40 AR-1262-5

R.T.: 10.204 min
 Delta R.T.: 0.000 min
 Response: 61825
 Conc: 11.82 ng/ml



#40 AR-1262-5

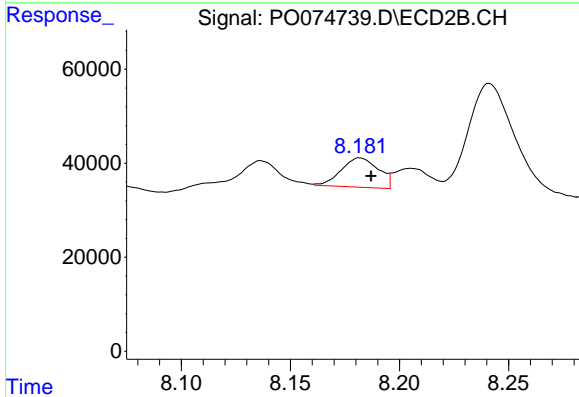
R.T.: 8.738 min
 Delta R.T.: -0.005 min
 Response: 46859
 Conc: 15.18 ng/ml



#41 AR-1268-1

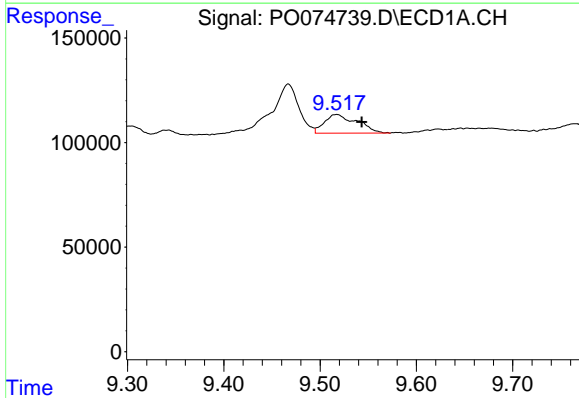
R.T.: 9.467 min
 Delta R.T.: 0.021 min
 Response: 463761
 Conc: 24.82 ng/ml

Instrument :
 ECD_O
 ClientSampleId :
 263K-29B



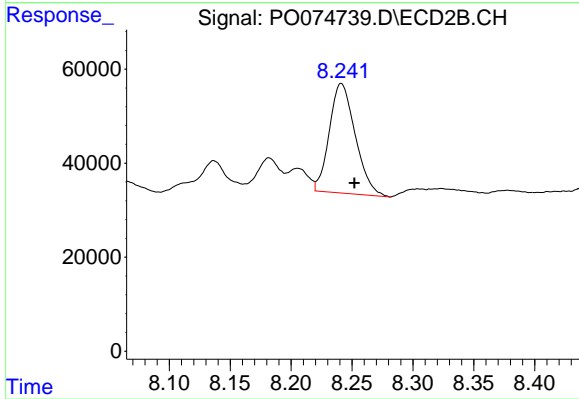
#41 AR-1268-1

R.T.: 8.182 min
 Delta R.T.: -0.005 min
 Response: 73973
 Conc: 6.61 ng/ml



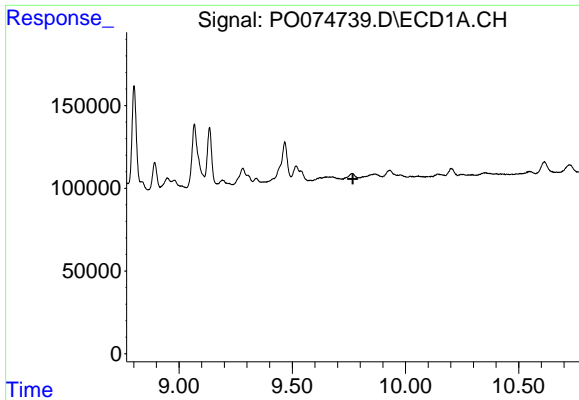
#42 AR-1268-2

R.T.: 9.517 min
 Delta R.T.: -0.026 min
 Response: 213315
 Conc: 13.37 ng/ml



#42 AR-1268-2

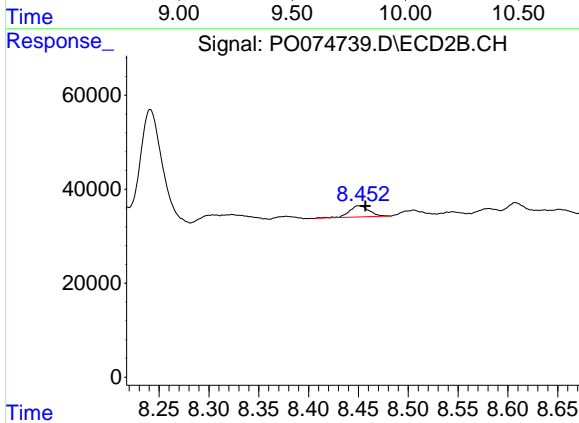
R.T.: 8.241 min
 Delta R.T.: -0.011 min
 Response: 345345
 Conc: 36.10 ng/ml



#43 AR-1268-3

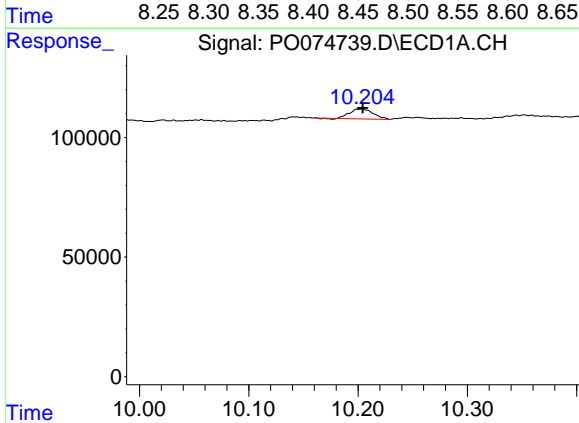
R.T.: 0.000 min
 Exp R.T.: 9.768 min
 Response: 0
 Conc: N.D.

Instrument :
 ECD_O
 ClientSampleId :
 263K-29B



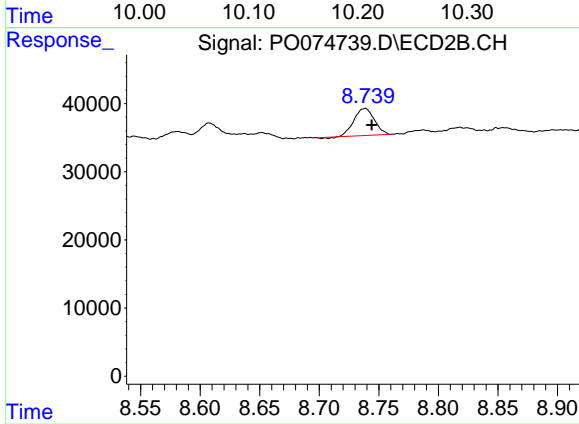
#43 AR-1268-3

R.T.: 8.451 min
 Delta R.T.: -0.006 min
 Response: 32993
 Conc: 3.97 ng/ml



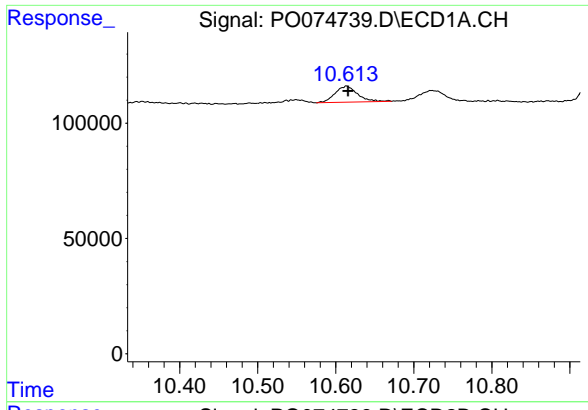
#44 AR-1268-4

R.T.: 10.204 min
 Delta R.T.: 0.000 min
 Response: 61825
 Conc: 10.55 ng/ml



#44 AR-1268-4

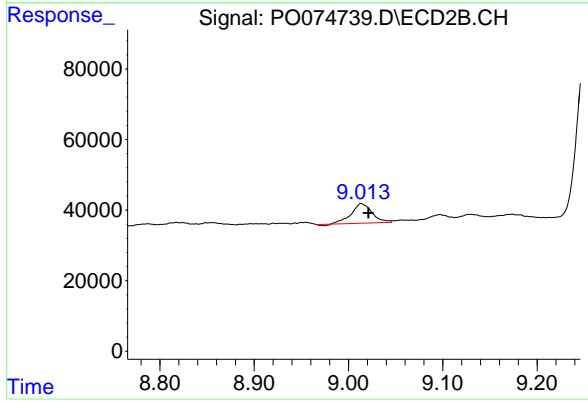
R.T.: 8.738 min
 Delta R.T.: -0.006 min
 Response: 46859
 Conc: 13.51 ng/ml



#45 AR-1268-5

R.T.: 10.614 min
Delta R.T.: -0.002 min
Response: 138924
Conc: 3.32 ng/ml

Instrument :
ECD_O
ClientSampled :
263K-29B



#45 AR-1268-5

R.T.: 9.014 min
Delta R.T.: -0.007 min
Response: 84582
Conc: 3.57 ng/ml