

Data Path : Z:\pestpcbsrv\HPCHEM1\ECD_0\Data\P0011521\
 Data File : P0074798.D
 Signal(s) : Signal #1: ECD1A.CH Signal #2: ECD2B.CH
 Acq On : 16 Jan 2021 5:13
 Operator : AJ/MA
 Sample : PB134166BS
 Misc :
 ALS Vial : 64 Sample Multiplier: 1

Instrument :
 ECD_0
 ClientSampleId :
 PB134166BS

Integration File signal 1: autoint1.e
 Integration File signal 2: autoint2.e
 Quant Time: Jan 18 00:20:12 2021
 Quant Method : Z:\pestpcbsrv\HPCHEM1\ECD_0\methods\P0011121.M
 Quant Title : GC EXTRACTABLES
 QLast Update : Tue Jan 12 06:02:45 2021
 Response via : Initial Calibration
 Integrator: ChemStation 6890 Scale Mode: Small noise peaks clipped

Volume Inj. : 2 µl
 Signal #1 Phase : ZB-MR1 Signal #2 Phase: ZB-MR2
 Signal #1 Info : 30Mx0.32mmx 0.50µ Signal #2 Info : 30M x 0.32mm x 0.25µm

Compound	RT#1	RT#2	Resp#1	Resp#2	ng/ml	ng/ml
System Monitoring Compounds						
1) SA Tetrachlo...	4.931	4.003	2284770	1111831	21.653	19.765
2) SA Decachlor...	10.952	9.257	2163355	1162607	21.315	21.175
Target Compounds						
3) L1 AR-1016-1	6.254	5.248	1979470	1010315	484.152	441.711
4) L1 AR-1016-2	6.278	5.267	2754970	1405004	483.757	444.653
5) L1 AR-1016-3	6.345	5.457	1669621	763449	492.005	444.759
6) L1 AR-1016-4	6.453	5.509	1412822	614696	496.898	437.377
7) L1 AR-1016-5	6.768	5.736	1333312	765185	487.495	444.980
8) L2 AR-1221-1	5.185	4.255	439361	90734	357.699	127.700 #
9) L2 AR-1221-2	5.281	4.355	214826	128372	238.425	240.204
10) L2 AR-1221-3	5.368	4.443	938538	507393	333.135	317.320
11) L3 AR-1232-1	5.368	4.443	938538	507393	409.797	387.083
12) L3 AR-1232-2	5.958	5.267	1311918	1405004	1141.050	1040.538
13) L3 AR-1232-3	6.278	5.457	2754970	763449	1141.761	1040.685
14) L3 AR-1232-4	6.453	5.554	1412822	727318	1175.473	1143.663
15) L3 AR-1232-5	6.550	5.736	1098470	765185	1350.045	1101.938
16) L4 AR-1242-1	6.254	5.248	1979470	1010315	614.726	548.143
17) L4 AR-1242-2	6.278	5.267	2754970	1405004	610.469	558.142
18) L4 AR-1242-3	6.345	5.457	1669621	763449	612.514	562.211
19) L4 AR-1242-4	6.453	5.554	1412822	727318	622.574	556.494
20) L4 AR-1242-5	7.238	6.112	195895	634685	77.845	362.505 #
21) L5 AR-1248-1	6.254	5.248	1979470	1010315	822.223	734.601
22) L5 AR-1248-2	6.550	5.509	1098470	614696	353.199	327.080
23) L5 AR-1248-3	6.768	5.554	1333312	727318	368.188	385.310
24) L5 AR-1248-4	7.198	5.736	233747	765185	52.416	339.726 #
25) L5 AR-1248-5	7.238	6.155	195895	100399	46.485	42.705
26) L6 AR-1254-1	7.168	6.112	1045589	634685	237.734	175.715 #
27) L6 AR-1254-2	7.397	6.271	1137511	608248	167.017	195.168
28) L6 AR-1254-3	7.781	6.707	594500	1098933	84.755	224.093 #
29) L6 AR-1254-4	8.076	6.926	437824	146489	72.193	42.243 #
30) L6 AR-1254-5	8.506	7.351	3817285	2133376	657.140	471.366 #
31) L7 AR-1260-1	7.948	6.824	2556565	1497362	512.467	469.351
32) L7 AR-1260-2	8.215	7.021	3384537	1863958	497.572	438.470
33) L7 AR-1260-3	8.581	7.173	2366446	1685382	412.868	467.711
34) L7 AR-1260-4	8.812	7.653	2448493	1248049	447.515	398.569
35) L7 AR-1260-5	9.139	7.900	5308172	3130965	424.825	393.898
36) L8 AR-1262-1	8.581	7.351	2366446	2133376	265.768	838.400 #
37) L8 AR-1262-2	9.139	7.900	5308172	3130965	346.707	340.532
38) L8 AR-1262-3	9.472f	8.184	3206930	662100	320.187	167.437 #
39) L8 AR-1262-4	9.525	8.246	1776356	2188050	238.522	330.261 #
40) L8 AR-1262-5	10.209	8.742	1251053	707899	239.135	229.285
41) L9 AR-1268-1	9.472f	8.184	3206930	662100	171.646	59.144 #

Data Path : Z:\pestpcbsrv\HPCHEM1\ECD_0\Data\P0011521\
 Data File : P0074798.D
 Signal(s) : Signal #1: ECD1A.CH Signal #2: ECD2B.CH
 Acq On : 16 Jan 2021 5:13
 Operator : AJ/MA
 Sample : PB134166BS
 Misc :
 ALS Vial : 64 Sample Multiplier: 1

Instrument :
 ECD_0
 ClientSampleId :
 PB134166BS

Integration File signal 1: autoint1.e
 Integration File signal 2: autoint2.e
 Quant Time: Jan 18 00:20:12 2021
 Quant Method : Z:\pestpcbsrv\HPCHEM1\ECD_0\methods\P0011121.M
 Quant Title : GC EXTRACTABLES
 QLast Update : Tue Jan 12 06:02:45 2021
 Response via : Initial Calibration
 Integrator: ChemStation 6890 Scale Mode: Small noise peaks clipped

Volume Inj. : 2 µl
 Signal #1 Phase : ZB-MR1 Signal #2 Phase: ZB-MR2
 Signal #1 Info : 30Mx0.32mmx 0.50µ Signal #2 Info : 30M x 0.32mm x 0.25µm

	Compound	RT#1	RT#2	Resp#1	Resp#2	ng/ml	ng/ml
42)	L9 AR-1268-2	9.525f	8.246	1776356	2188050	111.336	228.703 #
43)	L9 AR-1268-3	9.769	8.454	105737	59944	7.445	7.214
44)	L9 AR-1268-4	10.209	8.742	1251053	707899	213.543	204.056
45)	L9 AR-1268-5	10.619	9.018	404423	234591	9.678	9.907

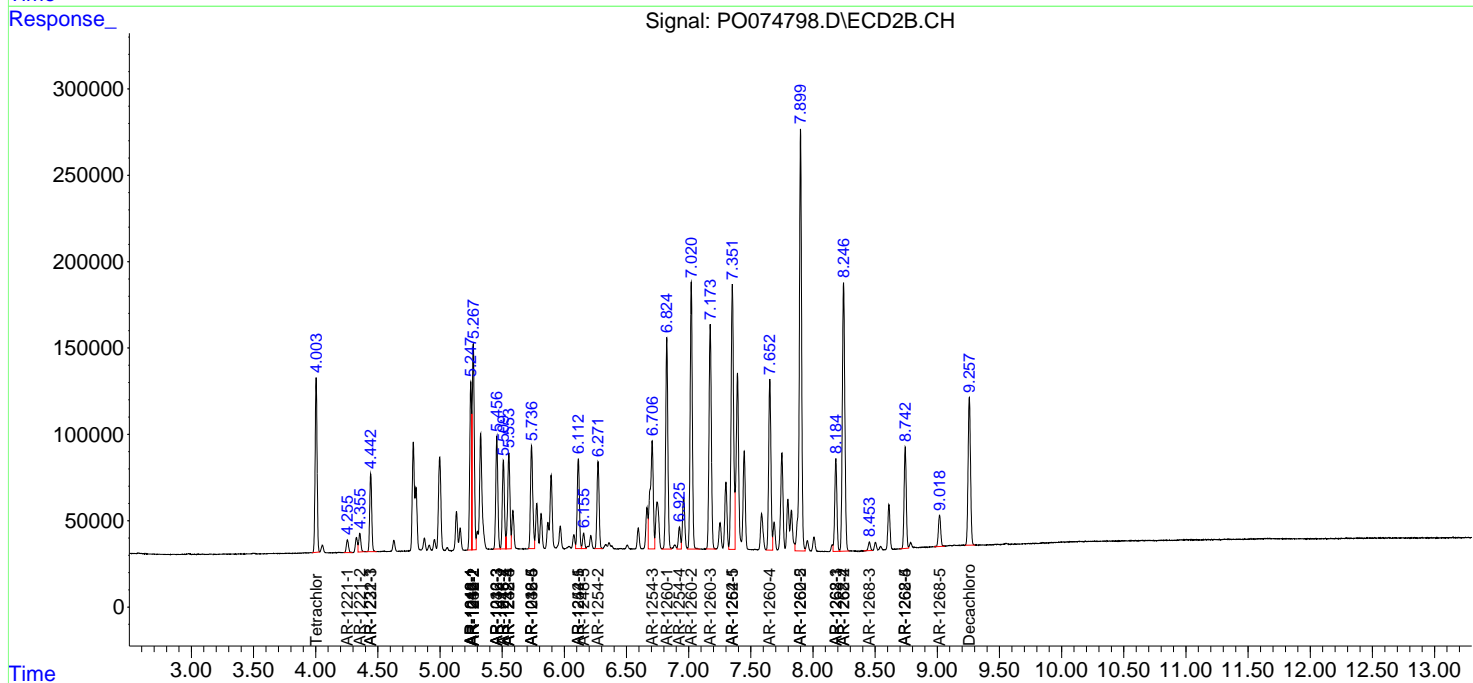
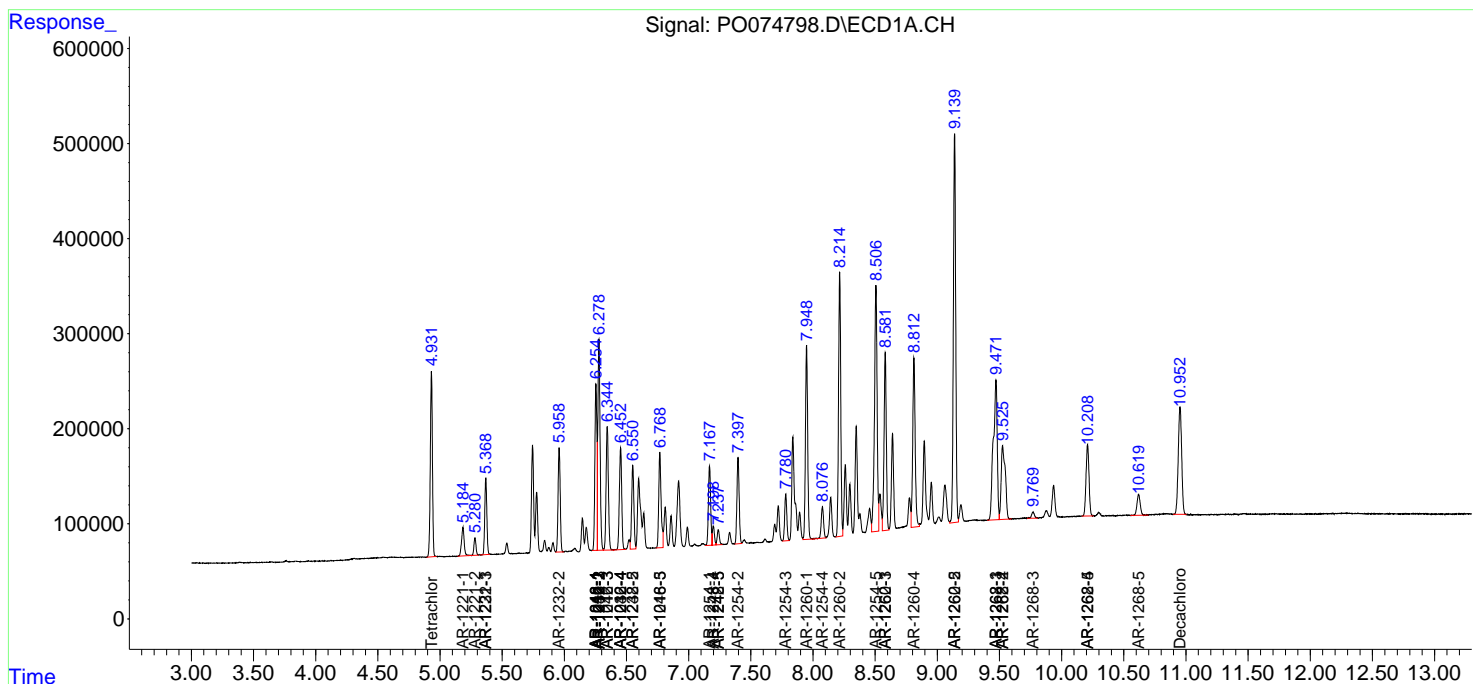
(f)=RT Delta > 1/2 Window (#)=Amounts differ by > 25% (m)=manual int.

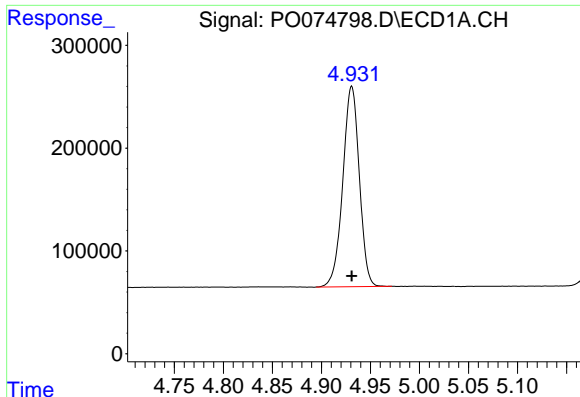
Data Path : Z:\pestpcbsrv\HPCHEM1\ECD_0\Data\P0011521\
 Data File : P0074798.D
 Signal(s) : Signal #1: ECD1A.CH Signal #2: ECD2B.CH
 Acq On : 16 Jan 2021 5:13
 Operator : AJ/MA
 Sample : PB134166BS
 Misc :
 ALS Vial : 64 Sample Multiplier: 1

Instrument :
 ECD_O
 ClientSampled :
 PB134166BS

Integration File signal 1: autoint1.e
 Integration File signal 2: autoint2.e
 Quant Time: Jan 18 00:20:12 2021
 Quant Method : Z:\pestpcbsrv\HPCHEM1\ECD_0\methods\P0011121.M
 Quant Title : GC EXTRACTABLES
 QLast Update : Tue Jan 12 06:02:45 2021
 Response via : Initial Calibration
 Integrator: ChemStation 6890 Scale Mode: Small noise peaks clipped

Volume Inj. : 2 µl
 Signal #1 Phase : ZB-MR1 Signal #2 Phase: ZB-MR2
 Signal #1 Info : 30Mx0.32mmx 0.50µ Signal #2 Info : 30M x 0.32mm x 0.25µm

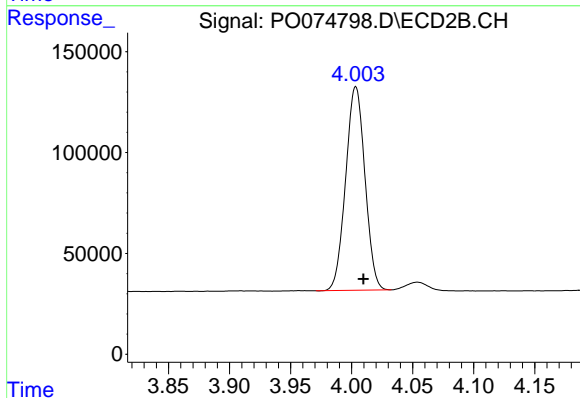




#1 Tetrachloro-m-xylene

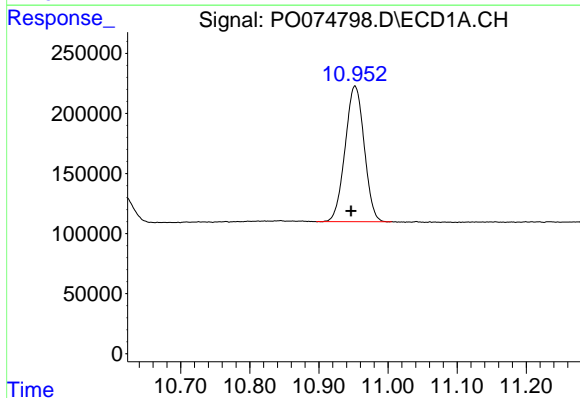
R.T.: 4.931 min
 Delta R.T.: 0.000 min
 Response: 2284770
 Conc: 21.65 ng/ml

Instrument :
 ECD_O
 ClientSampleId :
 PB134166BS



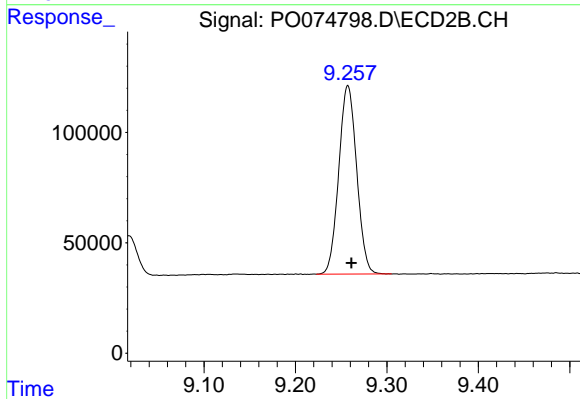
#1 Tetrachloro-m-xylene

R.T.: 4.003 min
 Delta R.T.: -0.006 min
 Response: 1111831
 Conc: 19.77 ng/ml



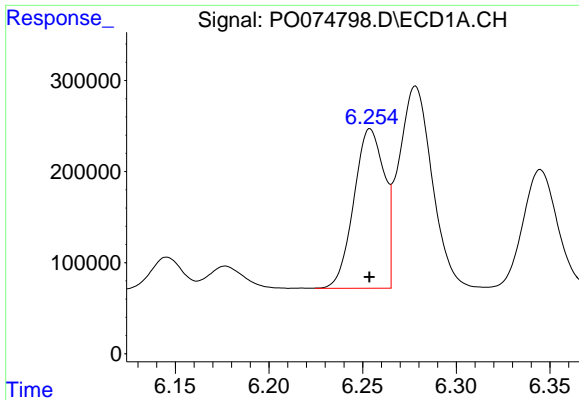
#2 Decachlorobiphenyl

R.T.: 10.952 min
 Delta R.T.: 0.006 min
 Response: 2163355
 Conc: 21.32 ng/ml



#2 Decachlorobiphenyl

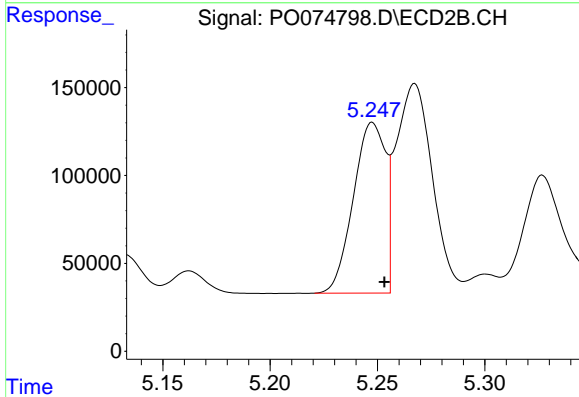
R.T.: 9.257 min
 Delta R.T.: -0.004 min
 Response: 1162607
 Conc: 21.18 ng/ml



#3 AR-1016-1

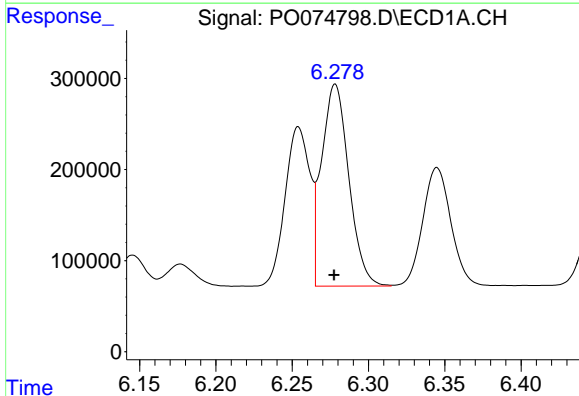
R.T.: 6.254 min
 Delta R.T.: 0.000 min
 Response: 1979470
 Conc: 484.15 ng/ml

Instrument :
 ECD_O
 ClientSampled :
 PB134166BS



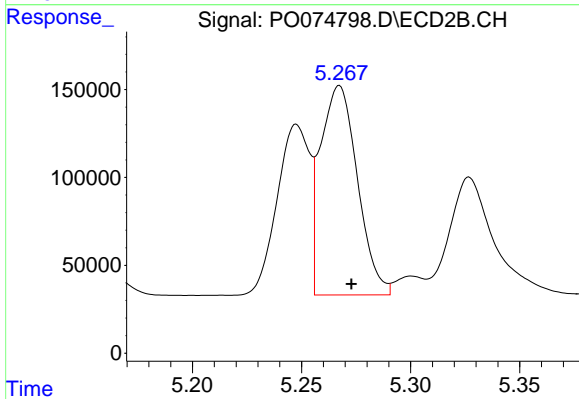
#3 AR-1016-1

R.T.: 5.248 min
 Delta R.T.: -0.006 min
 Response: 1010315
 Conc: 441.71 ng/ml



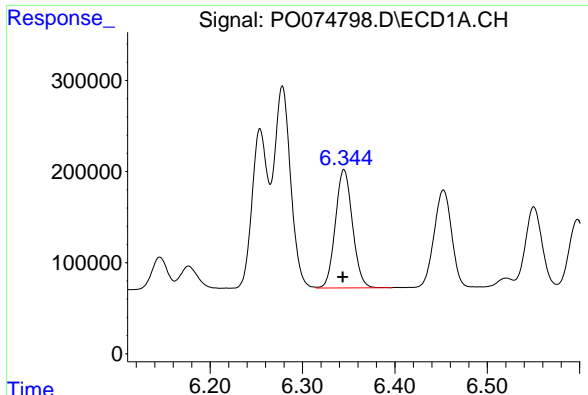
#4 AR-1016-2

R.T.: 6.278 min
 Delta R.T.: 0.000 min
 Response: 2754970
 Conc: 483.76 ng/ml



#4 AR-1016-2

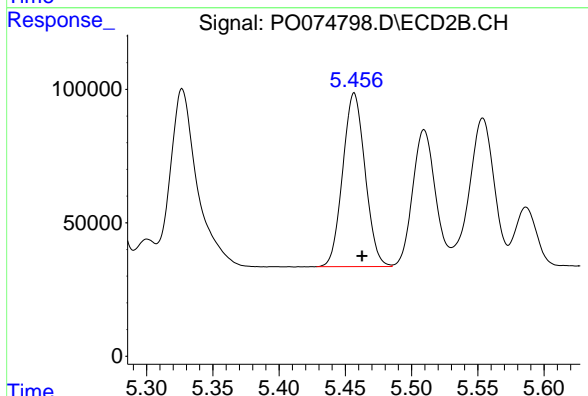
R.T.: 5.267 min
 Delta R.T.: -0.006 min
 Response: 1405004
 Conc: 444.65 ng/ml



#5 AR-1016-3

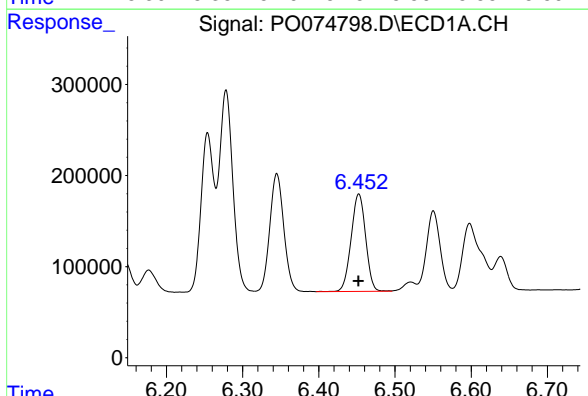
R.T.: 6.345 min
 Delta R.T.: 0.001 min
 Response: 1669621
 Conc: 492.00 ng/ml

Instrument :
 ECD_O
 ClientSampleId :
 PB134166BS



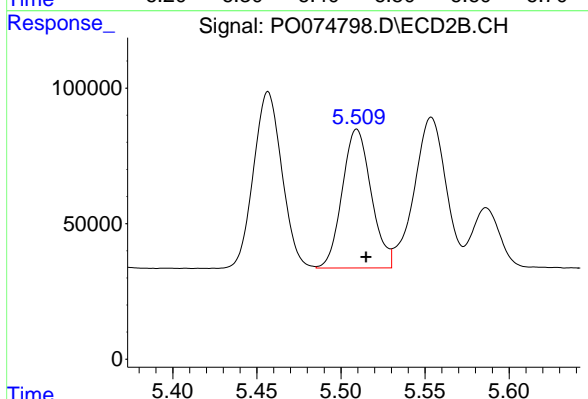
#5 AR-1016-3

R.T.: 5.457 min
 Delta R.T.: -0.006 min
 Response: 763449
 Conc: 444.76 ng/ml



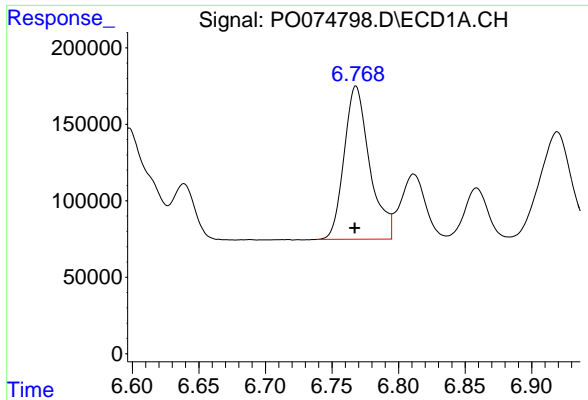
#6 AR-1016-4

R.T.: 6.453 min
 Delta R.T.: 0.000 min
 Response: 1412822
 Conc: 496.90 ng/ml



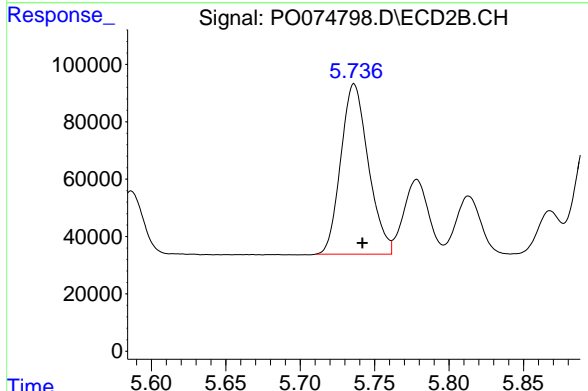
#6 AR-1016-4

R.T.: 5.509 min
 Delta R.T.: -0.005 min
 Response: 614696
 Conc: 437.38 ng/ml

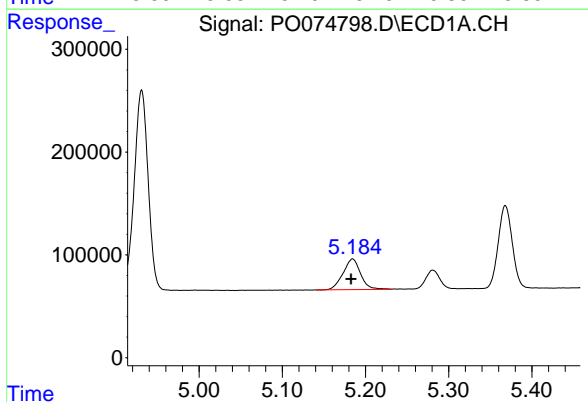


#7 AR-1016-5
 R.T.: 6.768 min
 Delta R.T.: 0.001 min
 Response: 1333312
 Conc: 487.49 ng/ml

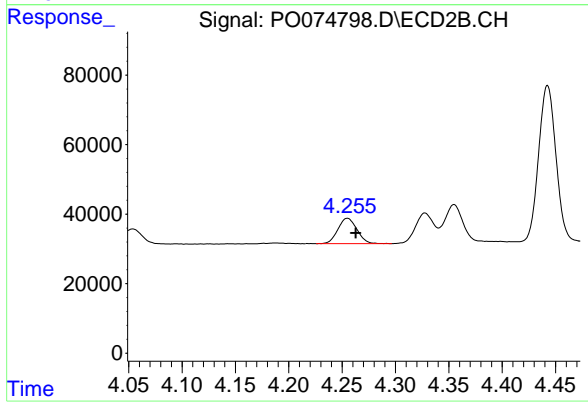
Instrument :
 ECD_O
 ClientSampled :
 PB134166BS



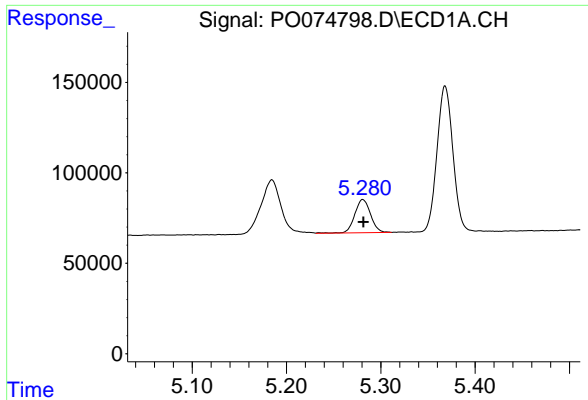
#7 AR-1016-5
 R.T.: 5.736 min
 Delta R.T.: -0.006 min
 Response: 765185
 Conc: 444.98 ng/ml



#8 AR-1221-1
 R.T.: 5.185 min
 Delta R.T.: 0.002 min
 Response: 439361
 Conc: 357.70 ng/ml

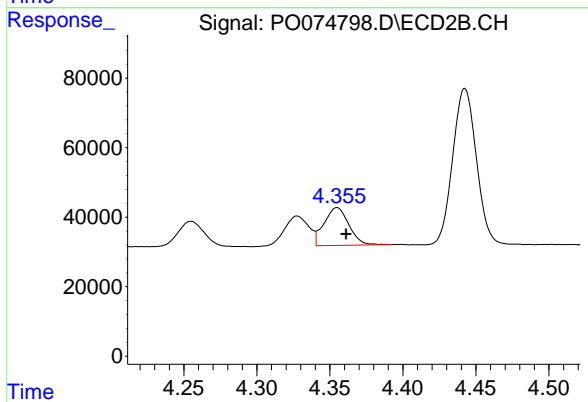


#8 AR-1221-1
 R.T.: 4.255 min
 Delta R.T.: -0.008 min
 Response: 90734
 Conc: 127.70 ng/ml

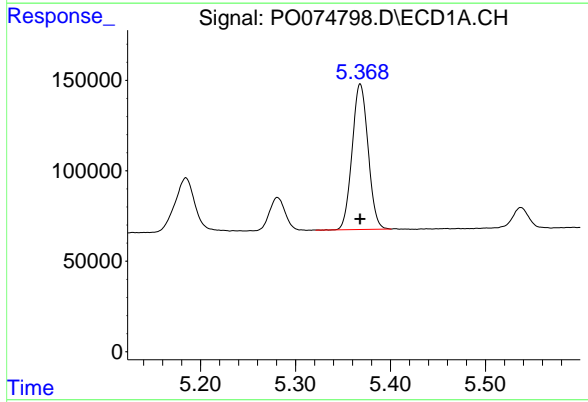


#9 AR-1221-2
R.T.: 5.281 min
Delta R.T.: 0.000 min
Response: 214826
Conc: 238.42 ng/ml

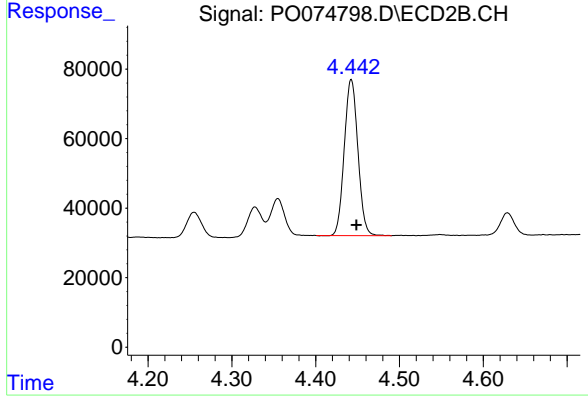
Instrument :
ECD_O
ClientSampled :
PB134166BS



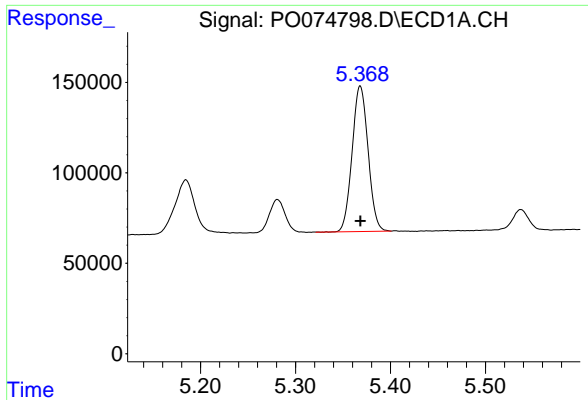
#9 AR-1221-2
R.T.: 4.355 min
Delta R.T.: -0.006 min
Response: 128372
Conc: 240.20 ng/ml



#10 AR-1221-3
R.T.: 5.368 min
Delta R.T.: 0.000 min
Response: 938538
Conc: 333.14 ng/ml

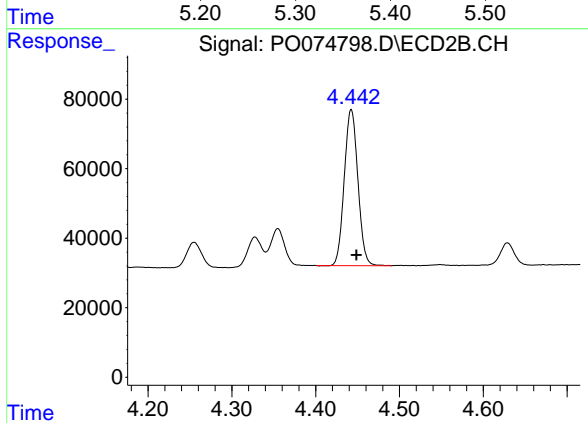


#10 AR-1221-3
R.T.: 4.443 min
Delta R.T.: -0.006 min
Response: 507393
Conc: 317.32 ng/ml

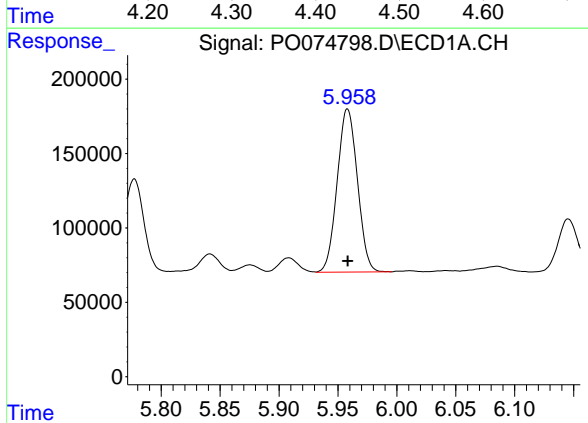


#11 AR-1232-1
 R.T.: 5.368 min
 Delta R.T.: 0.000 min
 Response: 938538
 Conc: 409.80 ng/ml

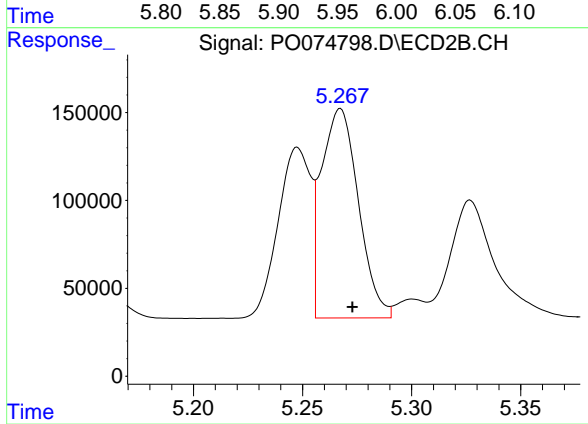
Instrument :
 ECD_O
 ClientSampled :
 PB134166BS



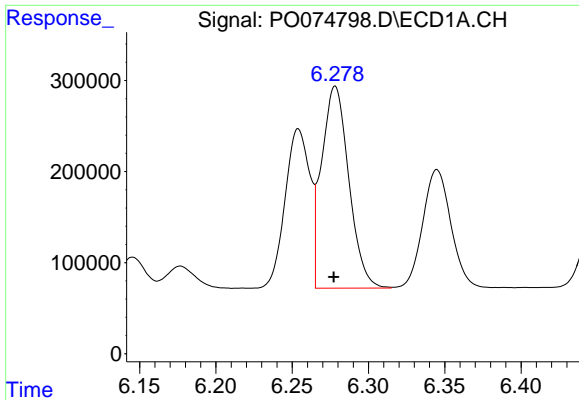
#11 AR-1232-1
 R.T.: 4.443 min
 Delta R.T.: -0.006 min
 Response: 507393
 Conc: 387.08 ng/ml



#12 AR-1232-2
 R.T.: 5.958 min
 Delta R.T.: 0.000 min
 Response: 1311918
 Conc: 1141.05 ng/ml



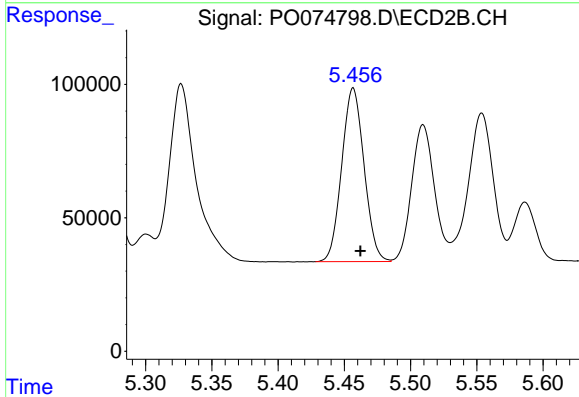
#12 AR-1232-2
 R.T.: 5.267 min
 Delta R.T.: -0.006 min
 Response: 1405004
 Conc: 1040.54 ng/ml



#13 AR-1232-3

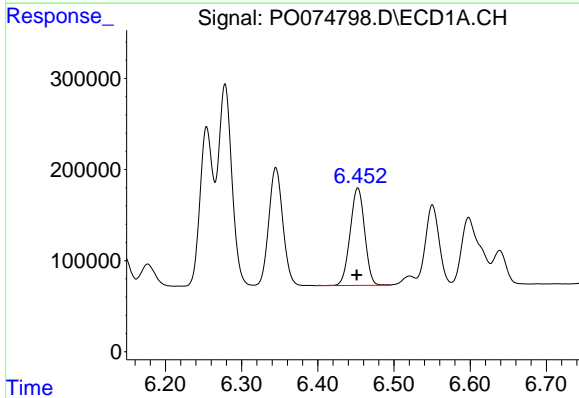
R.T.: 6.278 min
 Delta R.T.: 0.000 min
 Response: 2754970
 Conc: 1141.76 ng/ml

Instrument :
 ECD_O
 ClientSampleId :
 PB134166BS



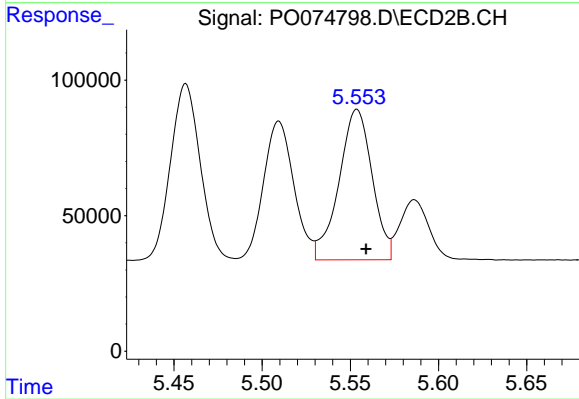
#13 AR-1232-3

R.T.: 5.457 min
 Delta R.T.: -0.005 min
 Response: 763449
 Conc: 1040.69 ng/ml



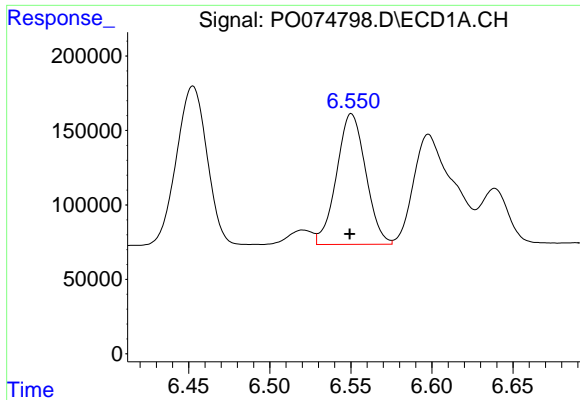
#14 AR-1232-4

R.T.: 6.453 min
 Delta R.T.: 0.001 min
 Response: 1412822
 Conc: 1175.47 ng/ml



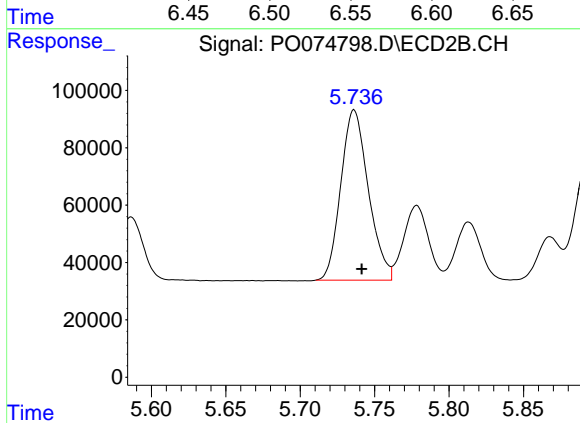
#14 AR-1232-4

R.T.: 5.554 min
 Delta R.T.: -0.005 min
 Response: 727318
 Conc: 1143.66 ng/ml

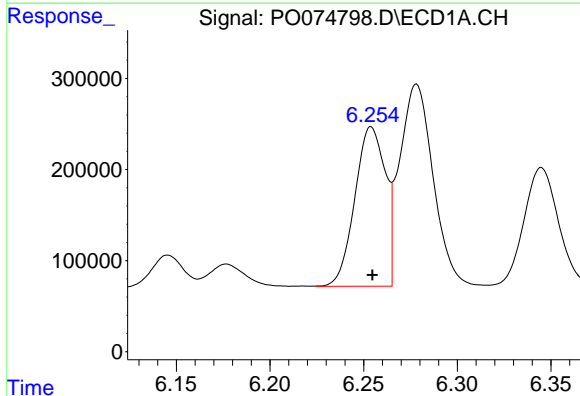


#15 AR-1232-5
 R.T.: 6.550 min
 Delta R.T.: 0.000 min
 Response: 1098470
 Conc: 1350.05 ng/ml

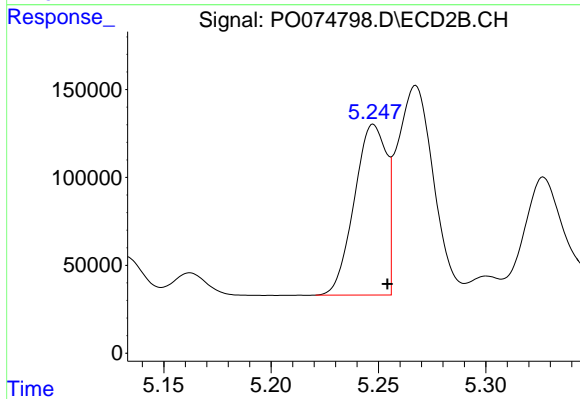
Instrument :
 ECD_O
 ClientSampleId :
 PB134166BS



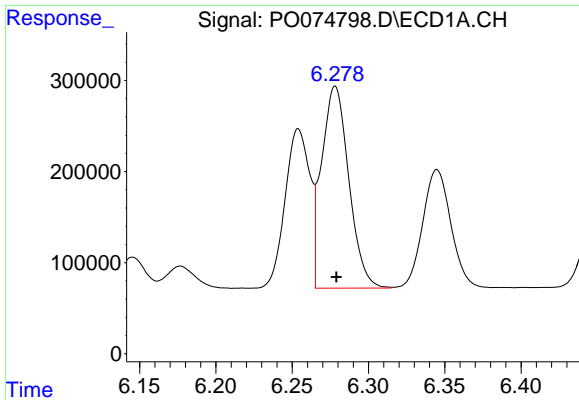
#15 AR-1232-5
 R.T.: 5.736 min
 Delta R.T.: -0.005 min
 Response: 765185
 Conc: 1101.94 ng/ml



#16 AR-1242-1
 R.T.: 6.254 min
 Delta R.T.: 0.000 min
 Response: 1979470
 Conc: 614.73 ng/ml



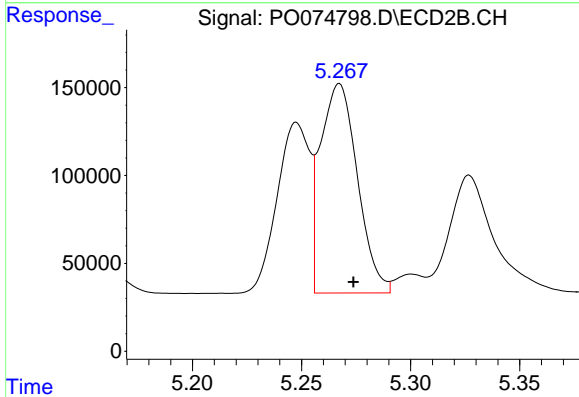
#16 AR-1242-1
 R.T.: 5.248 min
 Delta R.T.: -0.006 min
 Response: 1010315
 Conc: 548.14 ng/ml



#17 AR-1242-2

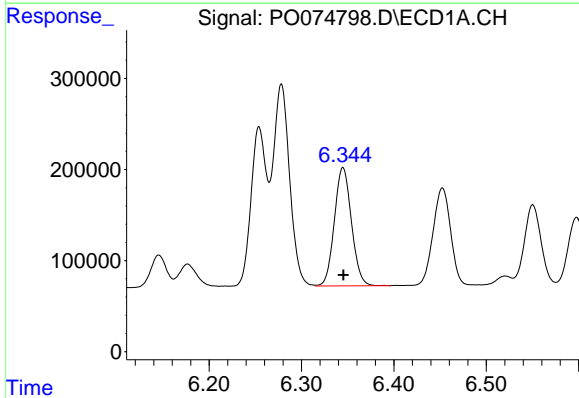
R.T.: 6.278 min
 Delta R.T.: 0.000 min
 Response: 2754970
 Conc: 610.47 ng/ml

Instrument :
 ECD_O
 ClientSampleId :
 PB134166BS



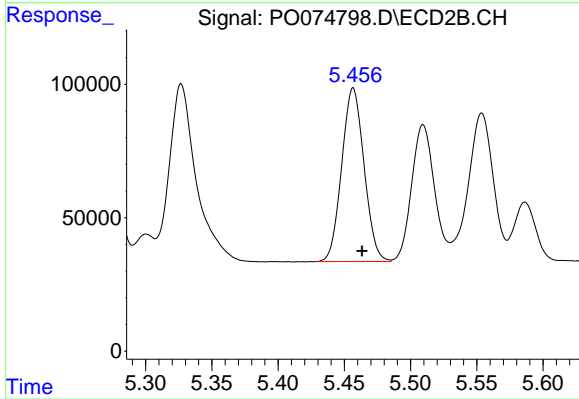
#17 AR-1242-2

R.T.: 5.267 min
 Delta R.T.: -0.006 min
 Response: 1405004
 Conc: 558.14 ng/ml



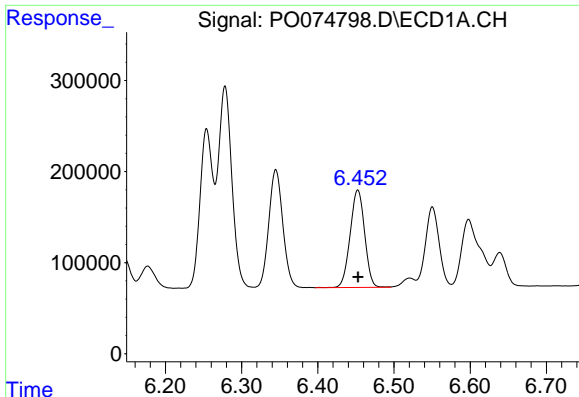
#18 AR-1242-3

R.T.: 6.345 min
 Delta R.T.: 0.000 min
 Response: 1669621
 Conc: 612.51 ng/ml



#18 AR-1242-3

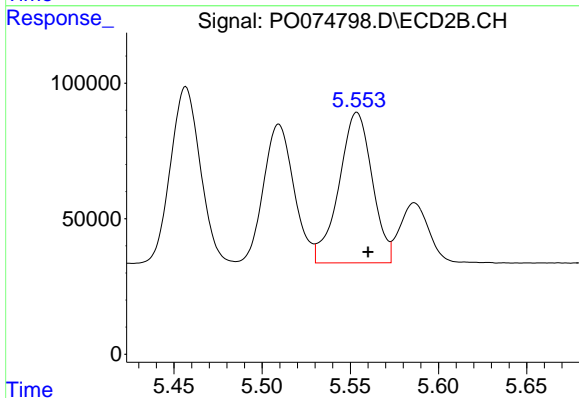
R.T.: 5.457 min
 Delta R.T.: -0.007 min
 Response: 763449
 Conc: 562.21 ng/ml



#19 AR-1242-4

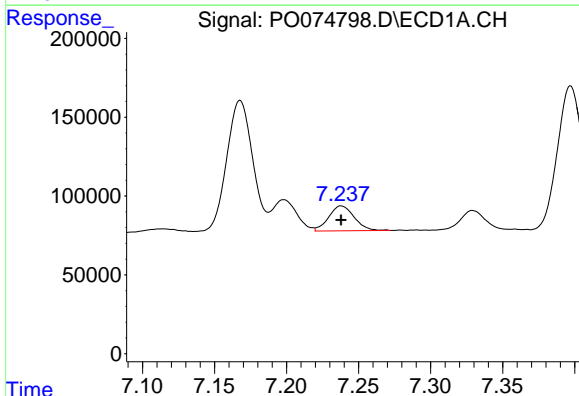
R.T.: 6.453 min
 Delta R.T.: 0.000 min
 Response: 1412822
 Conc: 622.57 ng/ml

Instrument :
 ECD_O
 ClientSampleId :
 PB134166BS



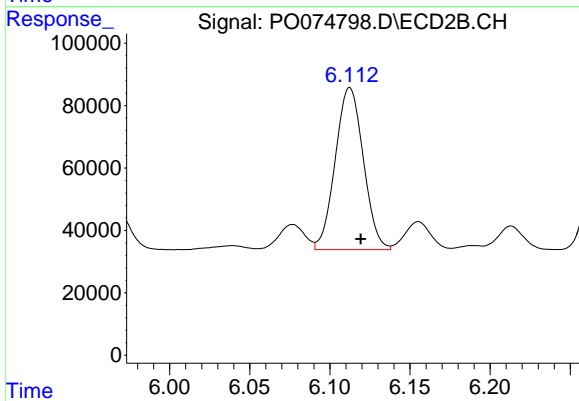
#19 AR-1242-4

R.T.: 5.554 min
 Delta R.T.: -0.006 min
 Response: 727318
 Conc: 556.49 ng/ml



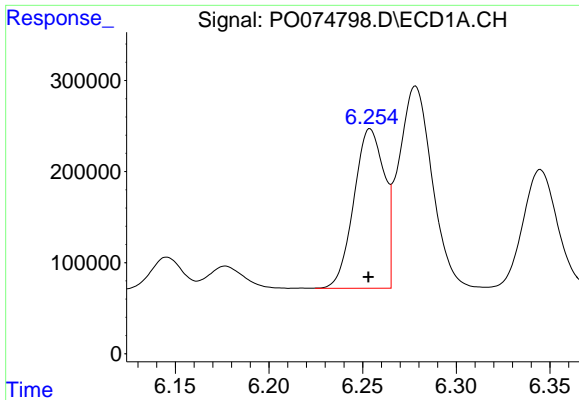
#20 AR-1242-5

R.T.: 7.238 min
 Delta R.T.: 0.000 min
 Response: 195895
 Conc: 77.84 ng/ml



#20 AR-1242-5

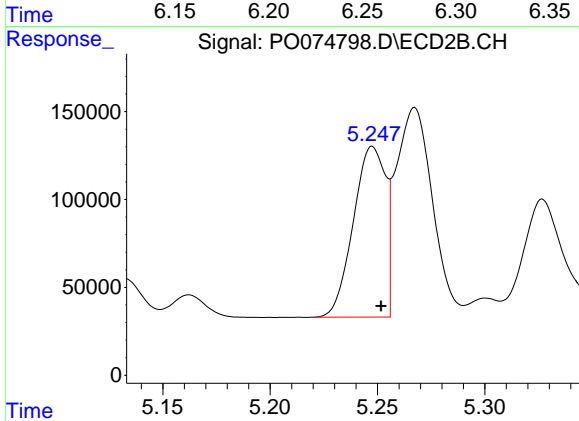
R.T.: 6.112 min
 Delta R.T.: -0.007 min
 Response: 634685
 Conc: 362.50 ng/ml



#21 AR-1248-1

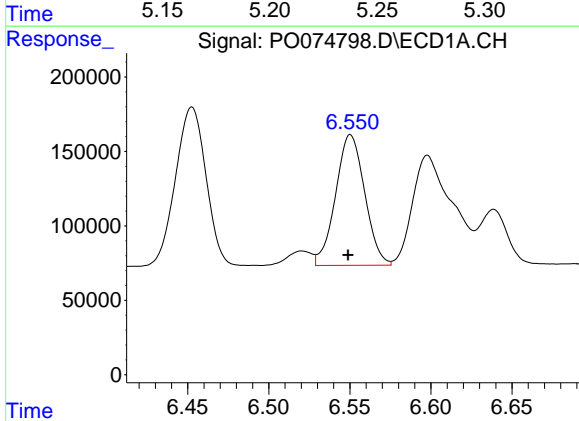
R.T.: 6.254 min
 Delta R.T.: 0.000 min
 Response: 1979470
 Conc: 822.22 ng/ml

Instrument :
 ECD_O
 ClientSampleId :
 PB134166BS



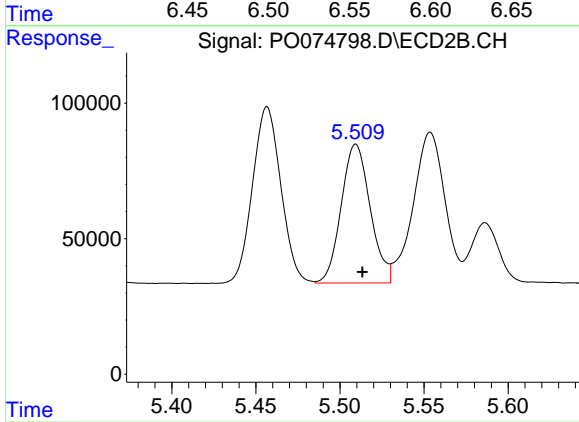
#21 AR-1248-1

R.T.: 5.248 min
 Delta R.T.: -0.004 min
 Response: 1010315
 Conc: 734.60 ng/ml



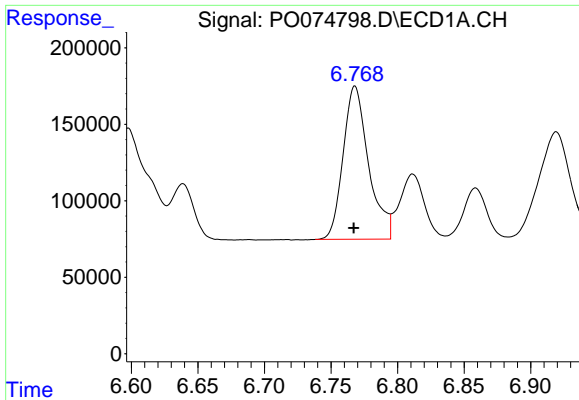
#22 AR-1248-2

R.T.: 6.550 min
 Delta R.T.: 0.002 min
 Response: 1098470
 Conc: 353.20 ng/ml



#22 AR-1248-2

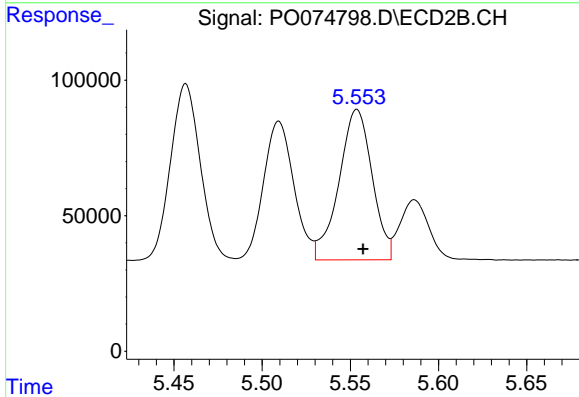
R.T.: 5.509 min
 Delta R.T.: -0.004 min
 Response: 614696
 Conc: 327.08 ng/ml



#23 AR-1248-3

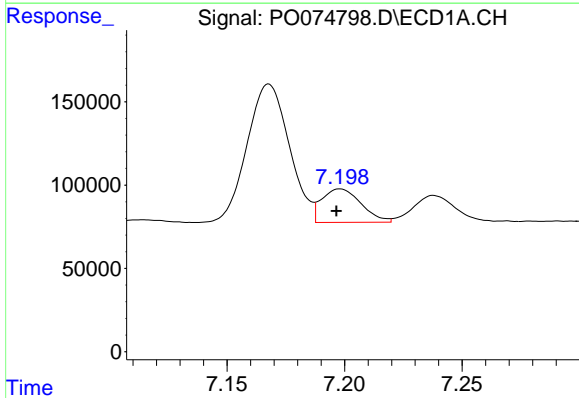
R.T.: 6.768 min
 Delta R.T.: 0.000 min
 Response: 1333312
 Conc: 368.19 ng/ml

Instrument :
 ECD_O
 ClientSampled :
 PB134166BS



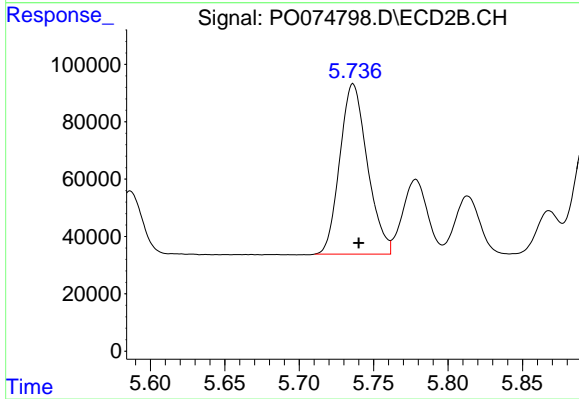
#23 AR-1248-3

R.T.: 5.554 min
 Delta R.T.: -0.003 min
 Response: 727318
 Conc: 385.31 ng/ml



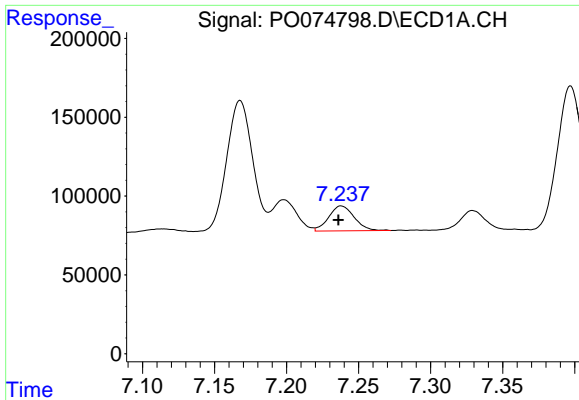
#24 AR-1248-4

R.T.: 7.198 min
 Delta R.T.: 0.002 min
 Response: 233747
 Conc: 52.42 ng/ml



#24 AR-1248-4

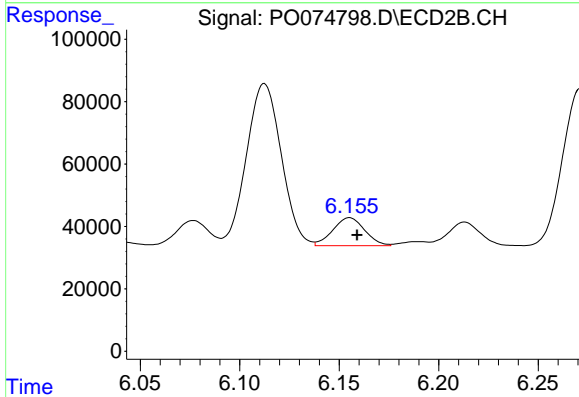
R.T.: 5.736 min
 Delta R.T.: -0.004 min
 Response: 765185
 Conc: 339.73 ng/ml



#25 AR-1248-5

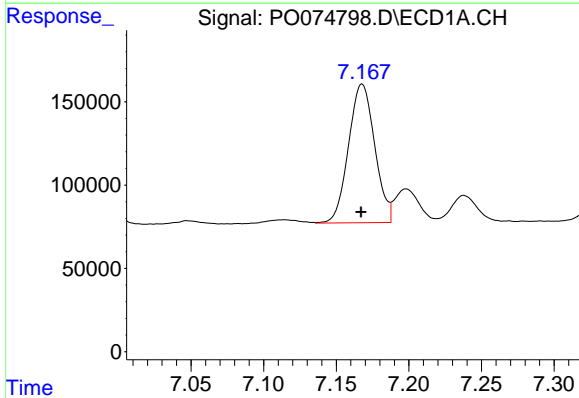
R.T.: 7.238 min
 Delta R.T.: 0.002 min
 Response: 195895
 Conc: 46.49 ng/ml

Instrument :
 ECD_O
 ClientSampled :
 PB134166BS



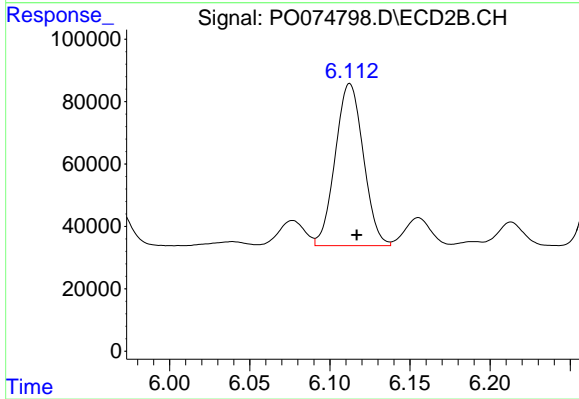
#25 AR-1248-5

R.T.: 6.155 min
 Delta R.T.: -0.004 min
 Response: 100399
 Conc: 42.70 ng/ml



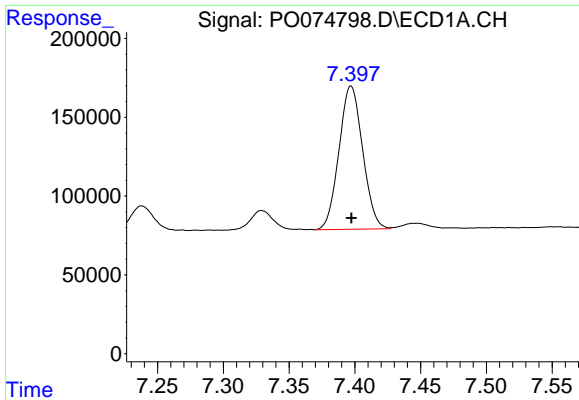
#26 AR-1254-1

R.T.: 7.168 min
 Delta R.T.: 0.000 min
 Response: 1045589
 Conc: 237.73 ng/ml



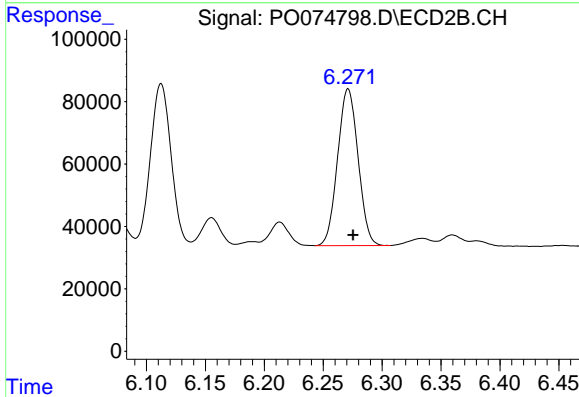
#26 AR-1254-1

R.T.: 6.112 min
 Delta R.T.: -0.004 min
 Response: 634685
 Conc: 175.72 ng/ml

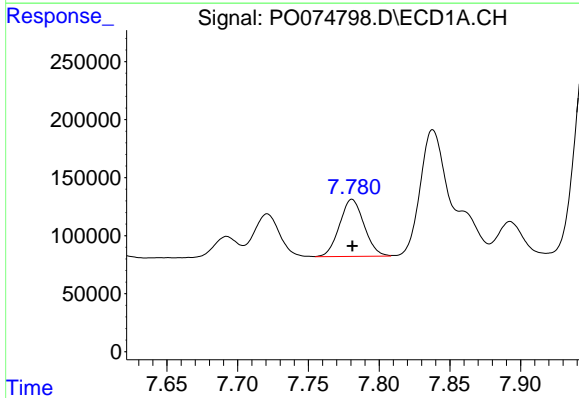


#27 AR-1254-2
 R.T.: 7.397 min
 Delta R.T.: 0.000 min
 Response: 1137511
 Conc: 167.02 ng/ml

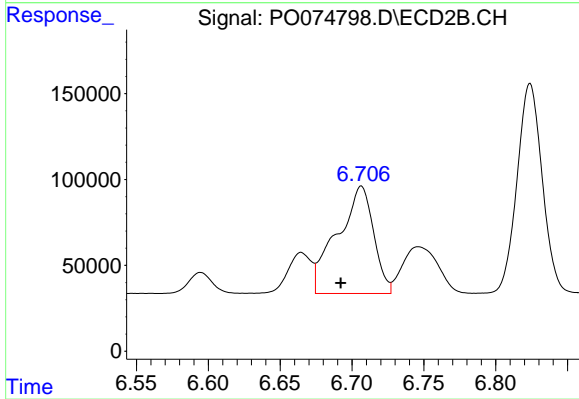
Instrument :
 ECD_O
ClientSampled :
 PB134166BS



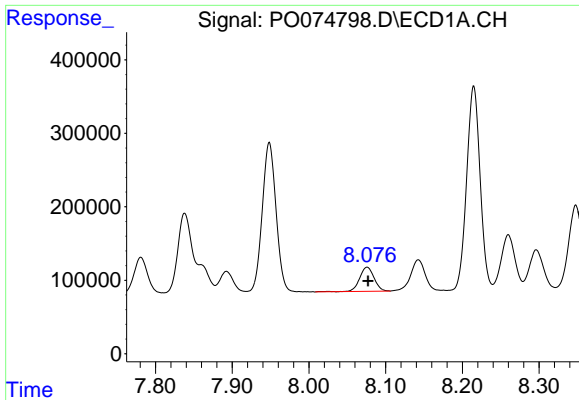
#27 AR-1254-2
 R.T.: 6.271 min
 Delta R.T.: -0.004 min
 Response: 608248
 Conc: 195.17 ng/ml



#28 AR-1254-3
 R.T.: 7.781 min
 Delta R.T.: 0.000 min
 Response: 594500
 Conc: 84.76 ng/ml

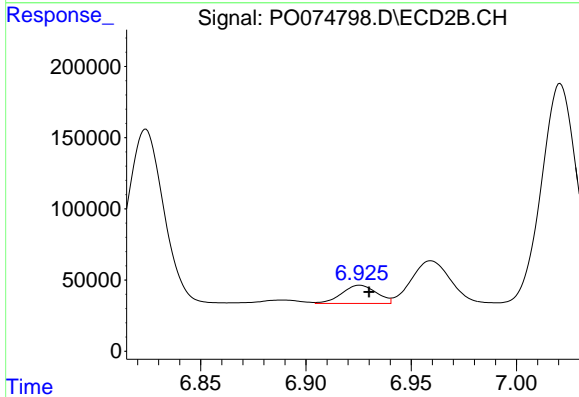


#28 AR-1254-3
 R.T.: 6.707 min
 Delta R.T.: 0.014 min
 Response: 1098933
 Conc: 224.09 ng/ml

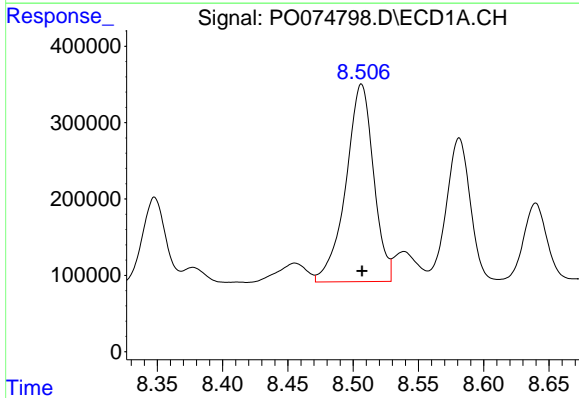


#29 AR-1254-4
 R.T.: 8.076 min
 Delta R.T.: -0.001 min
 Response: 437824
 Conc: 72.19 ng/ml

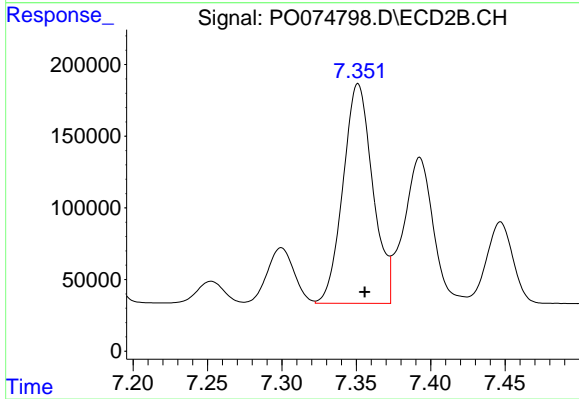
Instrument :
 ECD_O
 ClientSampleId :
 PB134166BS



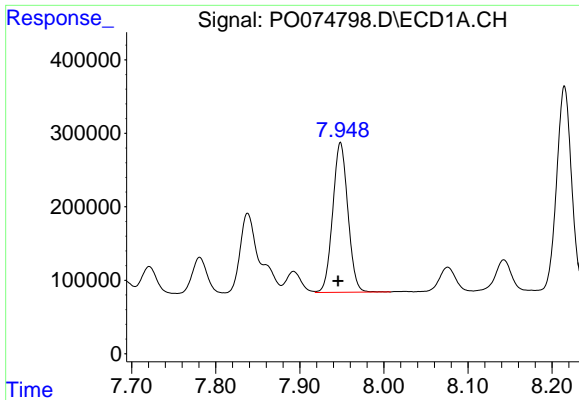
#29 AR-1254-4
 R.T.: 6.926 min
 Delta R.T.: -0.004 min
 Response: 146489
 Conc: 42.24 ng/ml



#30 AR-1254-5
 R.T.: 8.506 min
 Delta R.T.: 0.000 min
 Response: 3817285
 Conc: 657.14 ng/ml



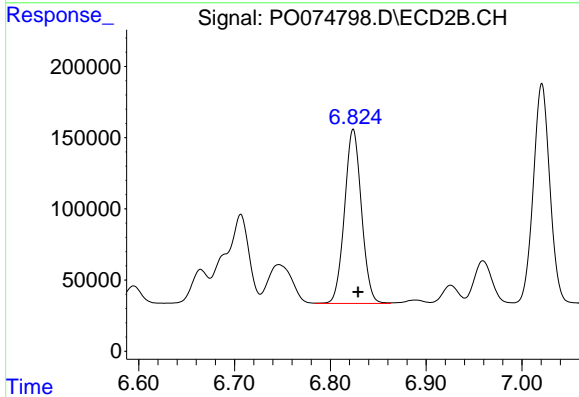
#30 AR-1254-5
 R.T.: 7.351 min
 Delta R.T.: -0.005 min
 Response: 2133376
 Conc: 471.37 ng/ml



#31 AR-1260-1

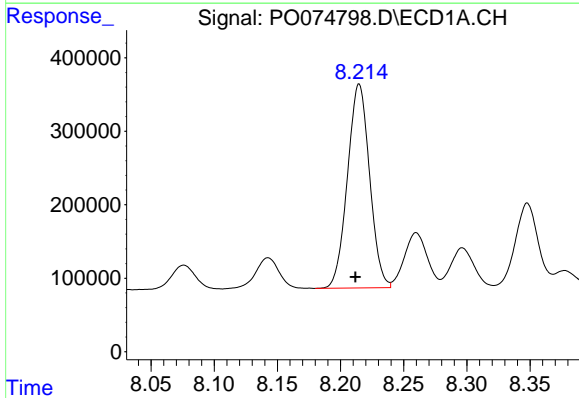
R.T.: 7.948 min
 Delta R.T.: 0.003 min
 Response: 2556565
 Conc: 512.47 ng/ml

Instrument :
 ECD_O
 ClientSampled :
 PB134166BS



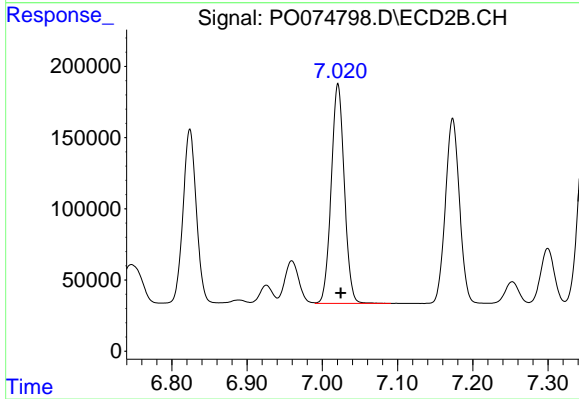
#31 AR-1260-1

R.T.: 6.824 min
 Delta R.T.: -0.005 min
 Response: 1497362
 Conc: 469.35 ng/ml



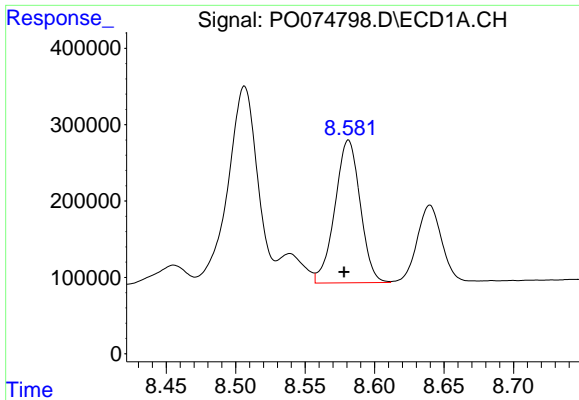
#32 AR-1260-2

R.T.: 8.215 min
 Delta R.T.: 0.003 min
 Response: 3384537
 Conc: 497.57 ng/ml



#32 AR-1260-2

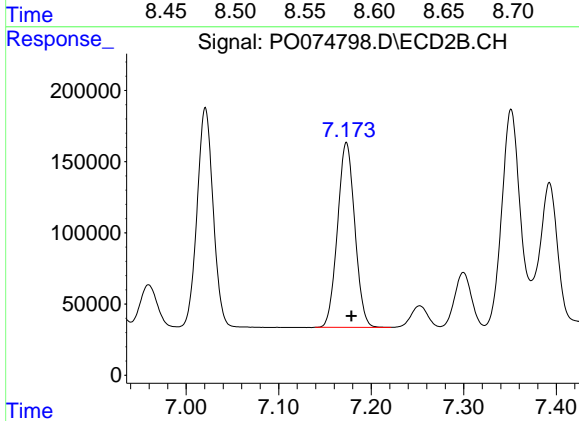
R.T.: 7.021 min
 Delta R.T.: -0.004 min
 Response: 1863958
 Conc: 438.47 ng/ml



#33 AR-1260-3

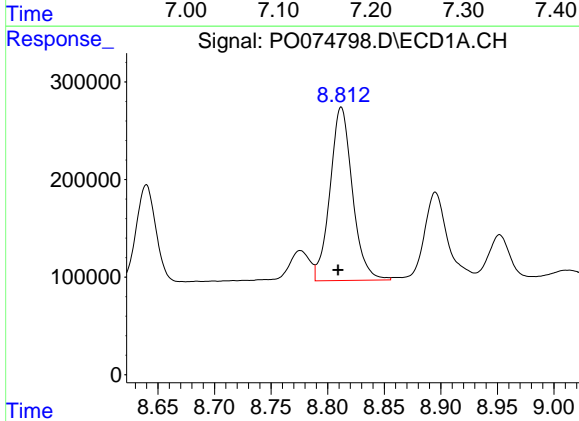
R.T.: 8.581 min
 Delta R.T.: 0.003 min
 Response: 2366446
 Conc: 412.87 ng/ml

Instrument :
 ECD_O
 ClientSampleId :
 PB134166BS



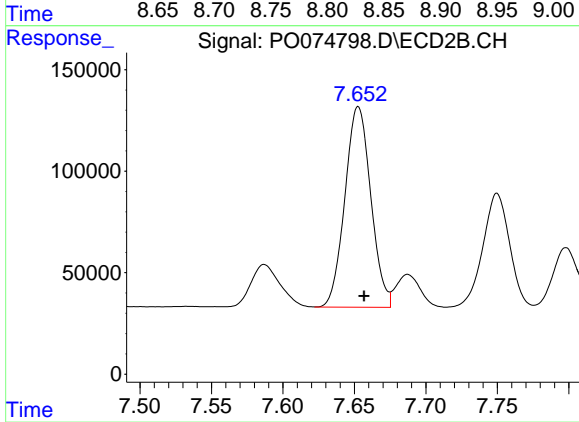
#33 AR-1260-3

R.T.: 7.173 min
 Delta R.T.: -0.005 min
 Response: 1685382
 Conc: 467.71 ng/ml



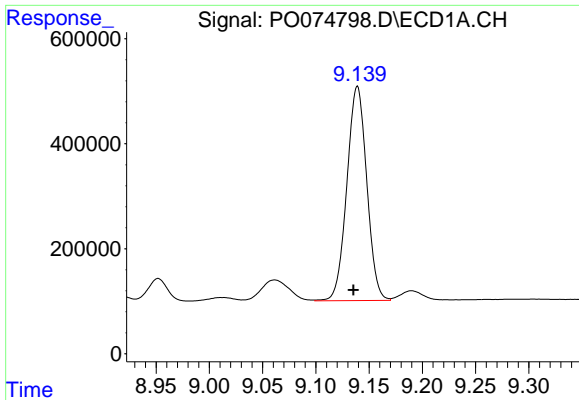
#34 AR-1260-4

R.T.: 8.812 min
 Delta R.T.: 0.003 min
 Response: 2448493
 Conc: 447.51 ng/ml



#34 AR-1260-4

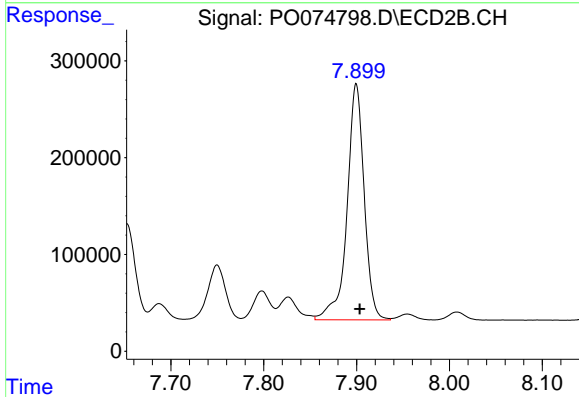
R.T.: 7.653 min
 Delta R.T.: -0.004 min
 Response: 1248049
 Conc: 398.57 ng/ml



#35 AR-1260-5

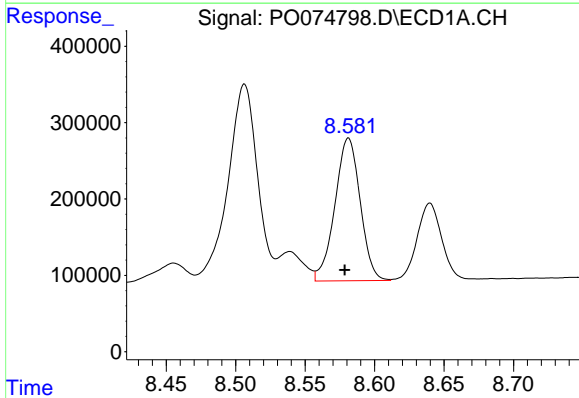
R.T.: 9.139 min
 Delta R.T.: 0.004 min
 Response: 5308172
 Conc: 424.82 ng/ml

Instrument :
 ECD_O
 ClientSampleId :
 PB134166BS



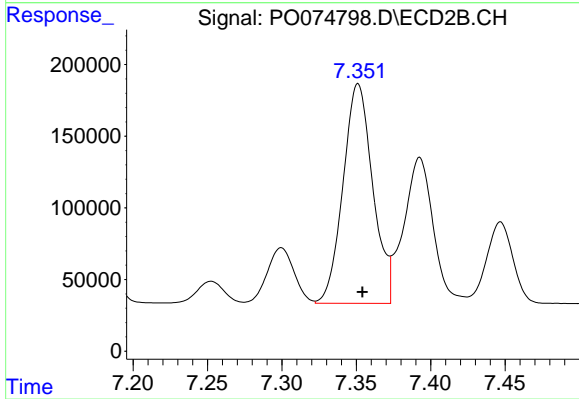
#35 AR-1260-5

R.T.: 7.900 min
 Delta R.T.: -0.004 min
 Response: 3130965
 Conc: 393.90 ng/ml



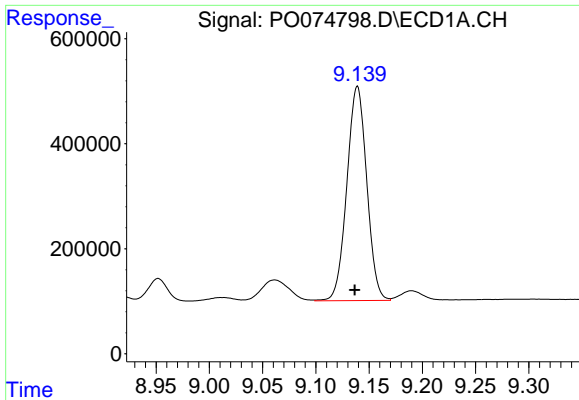
#36 AR-1262-1

R.T.: 8.581 min
 Delta R.T.: 0.003 min
 Response: 2366446
 Conc: 265.77 ng/ml



#36 AR-1262-1

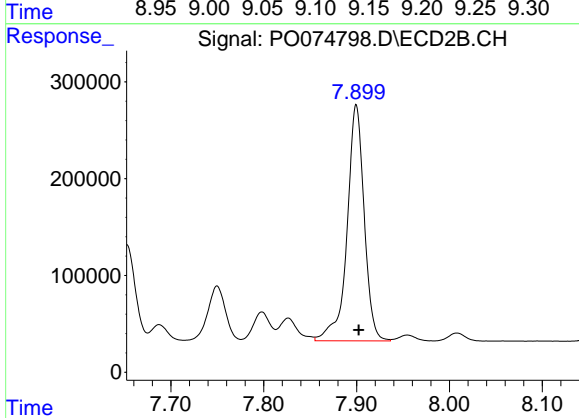
R.T.: 7.351 min
 Delta R.T.: -0.003 min
 Response: 2133376
 Conc: 838.40 ng/ml



#37 AR-1262-2

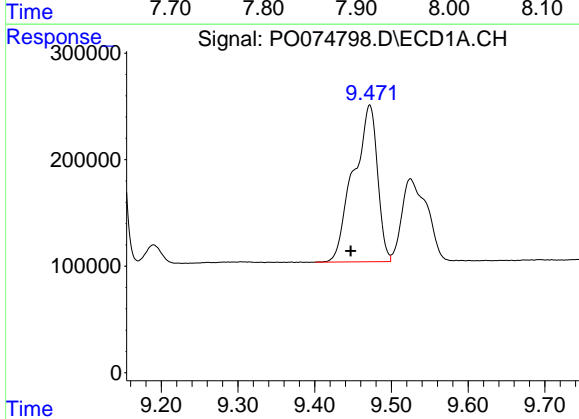
R.T.: 9.139 min
 Delta R.T.: 0.003 min
 Response: 5308172
 Conc: 346.71 ng/ml

Instrument :
 ECD_O
 ClientSampleId :
 PB134166BS



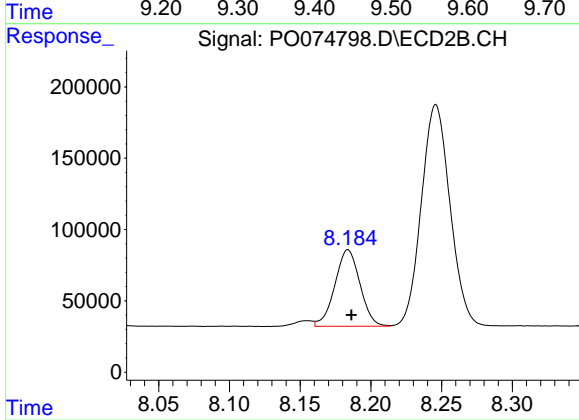
#37 AR-1262-2

R.T.: 7.900 min
 Delta R.T.: -0.003 min
 Response: 3130965
 Conc: 340.53 ng/ml



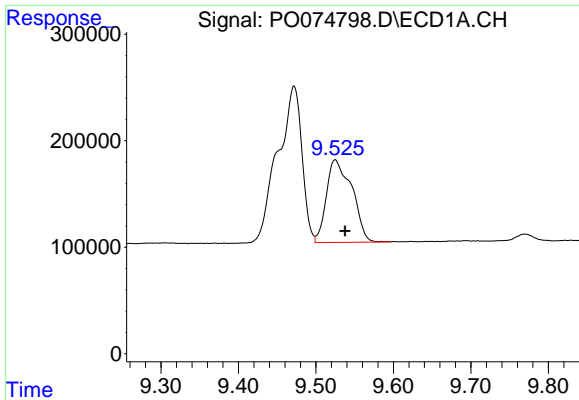
#38 AR-1262-3

R.T.: 9.472 min
 Delta R.T.: 0.025 min
 Response: 3206930
 Conc: 320.19 ng/ml



#38 AR-1262-3

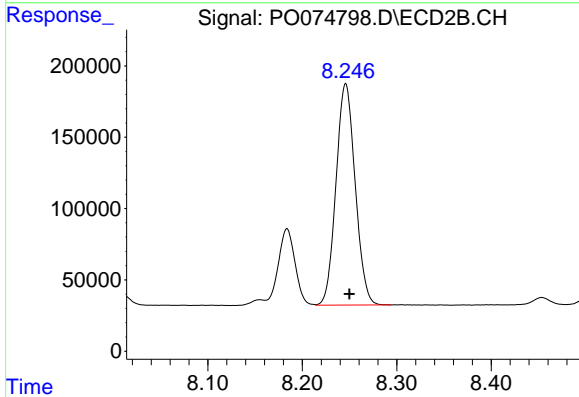
R.T.: 8.184 min
 Delta R.T.: -0.002 min
 Response: 662100
 Conc: 167.44 ng/ml



#39 AR-1262-4

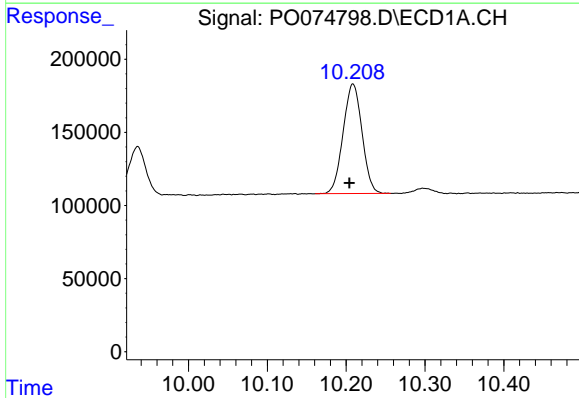
R.T.: 9.525 min
 Delta R.T.: -0.013 min
 Response: 1776356
 Conc: 238.52 ng/ml

Instrument :
 ECD_O
 ClientSampled :
 PB134166BS



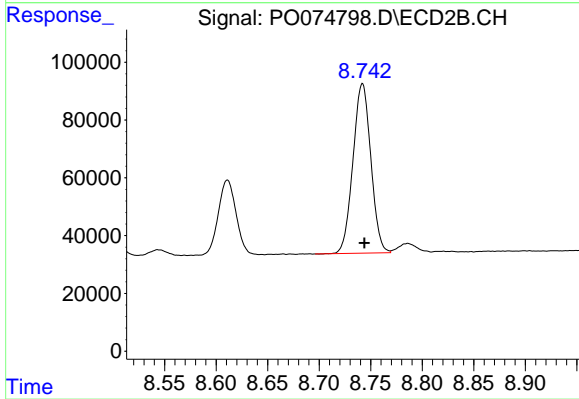
#39 AR-1262-4

R.T.: 8.246 min
 Delta R.T.: -0.004 min
 Response: 2188050
 Conc: 330.26 ng/ml



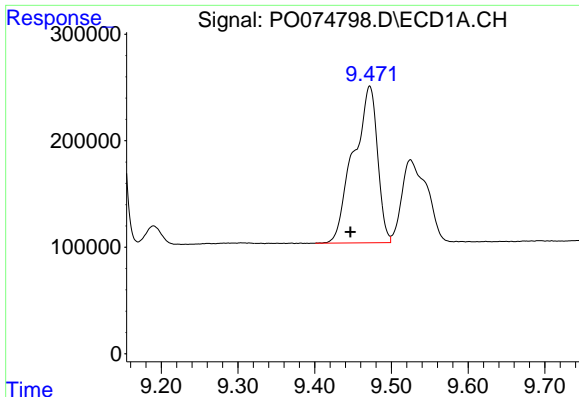
#40 AR-1262-5

R.T.: 10.209 min
 Delta R.T.: 0.004 min
 Response: 1251053
 Conc: 239.13 ng/ml



#40 AR-1262-5

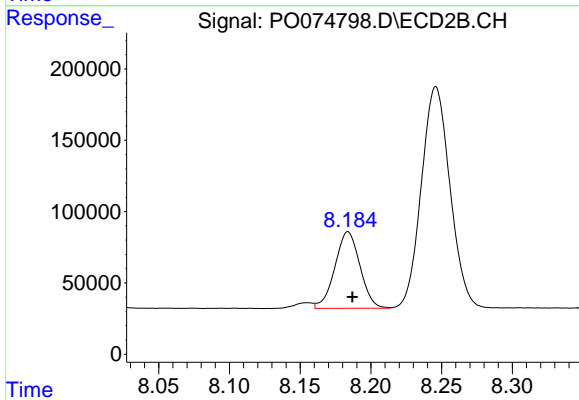
R.T.: 8.742 min
 Delta R.T.: -0.002 min
 Response: 707899
 Conc: 229.28 ng/ml



#41 AR-1268-1

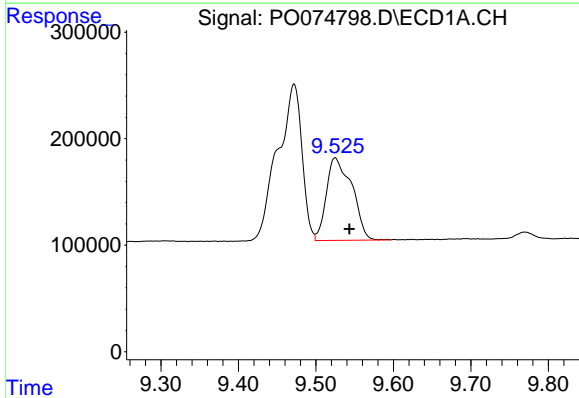
R.T.: 9.472 min
 Delta R.T.: 0.025 min
 Response: 3206930
 Conc: 171.65 ng/ml

Instrument :
 ECD_O
 ClientSampled :
 PB134166BS



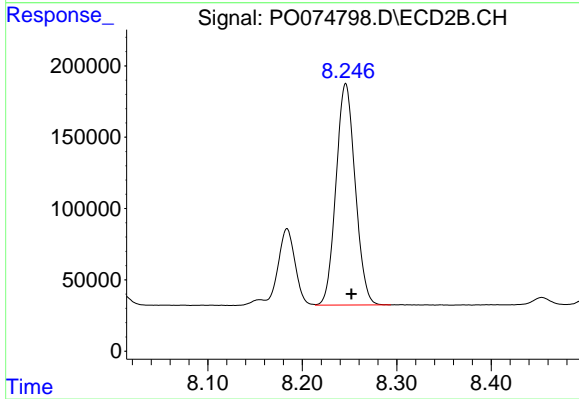
#41 AR-1268-1

R.T.: 8.184 min
 Delta R.T.: -0.003 min
 Response: 662100
 Conc: 59.14 ng/ml



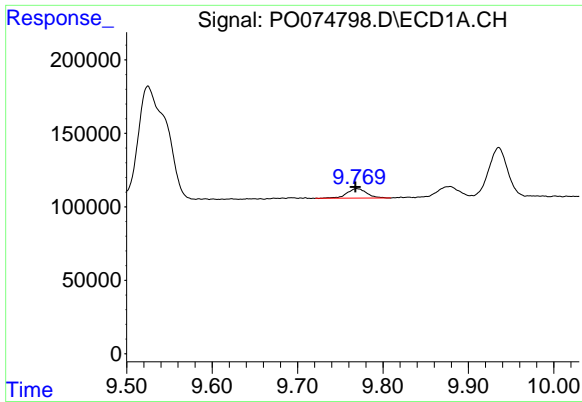
#42 AR-1268-2

R.T.: 9.525 min
 Delta R.T.: -0.018 min
 Response: 1776356
 Conc: 111.34 ng/ml



#42 AR-1268-2

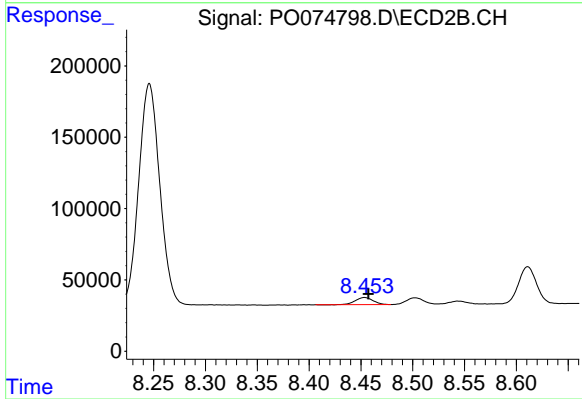
R.T.: 8.246 min
 Delta R.T.: -0.006 min
 Response: 2188050
 Conc: 228.70 ng/ml



#43 AR-1268-3

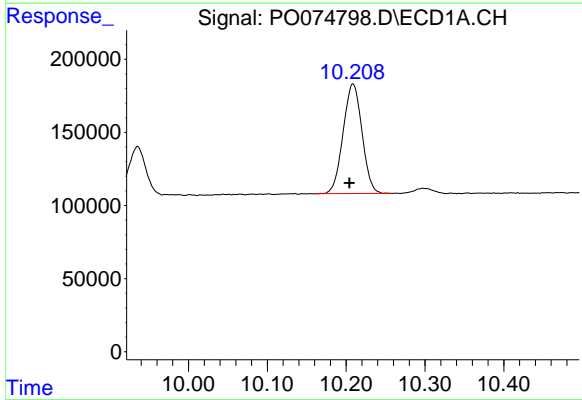
R.T.: 9.769 min
 Delta R.T.: 0.002 min
 Response: 105737
 Conc: 7.45 ng/ml

Instrument :
 ECD_O
 ClientSampled :
 PB134166BS



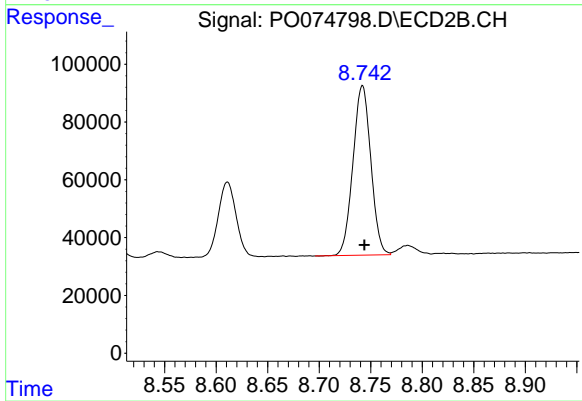
#43 AR-1268-3

R.T.: 8.454 min
 Delta R.T.: -0.004 min
 Response: 59944
 Conc: 7.21 ng/ml



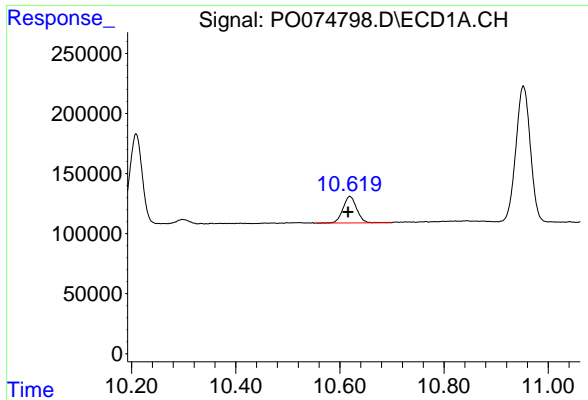
#44 AR-1268-4

R.T.: 10.209 min
 Delta R.T.: 0.004 min
 Response: 1251053
 Conc: 213.54 ng/ml



#44 AR-1268-4

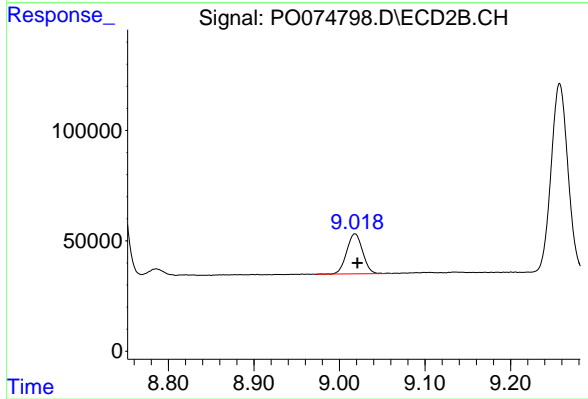
R.T.: 8.742 min
 Delta R.T.: -0.002 min
 Response: 707899
 Conc: 204.06 ng/ml



#45 AR-1268-5

R.T.: 10.619 min
Delta R.T.: 0.003 min
Response: 404423
Conc: 9.68 ng/ml

Instrument :
ECD_O
ClientSampleId :
PB134166BS



#45 AR-1268-5

R.T.: 9.018 min
Delta R.T.: -0.003 min
Response: 234591
Conc: 9.91 ng/ml