

Data Path : Z:\pestpcbsrv\HPCHEM1\ECD_Q\Data\PQ011721\
 Data File : PQ051760.D
 Signal(s) : Signal #1: ECD1A.ch Signal #2: ECD2B.ch
 Acq On : 15 Jan 2021 23:30
 Operator : DD\AJ
 Sample : HEXANE
 Misc :
 ALS Vial : 1 Sample Multiplier: 1

Instrument :
 ECD_O
 ClientSampleId :
 HEXANE

Integration File signal 1: autoint1.e
 Integration File signal 2: autoint2.e
 Quant Time: Jan 16 04:55:05 2021
 Quant Method : Z:\pestpcbsrv\HPCHEM1\ECD_Q\Method\PQ122120CLP.M
 Quant Title : GC EXTRACTABLES
 QLast Update : Tue Dec 22 06:18:29 2020
 Response via : Initial Calibration
 Integrator: ChemStation

Volume Inj. : 1 µl
 Signal #1 Phase : ZB MR1 Signal #2 Phase: ZB MR2
 Signal #1 Info : 30Mx0.32mmx 0.5µm Signal #2 Info : 30M x 0.32mm x 0.25µm

Compound	RT#1	RT#2	Resp#1	Resp#2	ng/ml	ng/ml
System Monitoring Compounds						
1) SA Tetrachlo...	0.000	4.237	0	318141	N.D.	0.044 #
Target Compounds						
3) L1 AR-1016-1	6.491f	5.509	2409230	114653	2.851	0.447 #
4) L1 AR-1016-2	0.000	5.531	0	107917	N.D.	0.301 #
5) L1 AR-1016-3	0.000	5.728	0	26420	N.D.	0.144 #
6) L1 AR-1016-4	0.000	5.762	0	71682	N.D.	0.497 #
8) L2 AR-1221-1	0.000	4.523	0	591449	N.D.	7.673 #
9) L2 AR-1221-2	0.000	4.612	0	654687	N.D.	12.242 #
10) L2 AR-1221-3	0.000	4.712	0	215244	N.D.	1.175 #
11) L3 AR-1232-1	0.000	4.712	0	215244	N.D.	1.575 #
12) L3 AR-1232-2	6.219f	5.531	465760	107917	1.887	0.767 #
13) L3 AR-1232-3	0.000	5.728	0	26420	N.D.	0.369 #
14) L3 AR-1232-4	0.000	5.828	0	37144	N.D.	0.604 #
16) L4 AR-1242-1	6.491f	5.509	2409230	114653	3.429	0.545 #
17) L4 AR-1242-2	0.000	5.531	0	107917	N.D.	0.370 #
18) L4 AR-1242-3	0.000	5.728	0	26420	N.D.	0.175 #
19) L4 AR-1242-4	0.000	5.828	0	37144	N.D.	0.257 #
20) L4 AR-1242-5	7.554	6.409	17275630	7377614	31.337	38.611
21) L5 AR-1248-1	6.491f	5.509	2409230	114653	4.259	0.682 #
22) L5 AR-1248-2	0.000	5.762	0	71682	N.D.	0.317 #
23) L5 AR-1248-3	0.000	5.828	0	37144	N.D.	0.158 #
24) L5 AR-1248-4	7.487	6.052f	62089717	-7662566	58.515	N.D. #
25) L5 AR-1248-5	7.554	6.409	17275630	7377614	16.649	25.568 #
26) L6 AR-1254-1	7.487	6.409	62089717	7377614	63.134	17.384 #
27) L6 AR-1254-2	7.706	6.537	2483473	475826	1.631	1.296
28) L6 AR-1254-3	8.116f	6.965	88139598	2850735	53.345	4.672 #
29) L6 AR-1254-4	8.345	7.199	77711785	1170772	65.358	3.100 #
30) L6 AR-1254-5	0.000	7.641	0	245429	N.D.	0.467 #
31) L7 AR-1260-1	8.262	7.105	43177959	453646	41.688	1.279 #
32) L7 AR-1260-2	0.000	7.270	0	5758060	N.D.	13.015 #
33) L7 AR-1260-3	0.000	7.473	0	824452	N.D.	1.990 #
34) L7 AR-1260-4	0.000	7.936	0	369881	N.D.	1.067 #
35) L7 AR-1260-5	0.000	8.185	0	663617	N.D.	0.769 #
36) L8 AR-1262-1	0.000	7.632	0	246749	N.D.	0.861 #
37) L8 AR-1262-2	0.000	8.185	0	663617	N.D.	0.651 #
38) L8 AR-1262-3	0.000	8.464	0	1924837	N.D.	5.115 #
39) L8 AR-1262-4	0.000	8.566	0	187448	N.D.	0.256 #
40) L8 AR-1262-5	0.000	9.041	0	1063242	N.D.	3.230 #
41) L9 AR-1268-1	0.000	8.464	0	1924837	N.D.	1.657 #
42) L9 AR-1268-2	0.000	8.566	0	187448	N.D.	0.176 #
43) L9 AR-1268-3	10.215f	8.734	2033952	1563382	0.795	1.754 #
44) L9 AR-1268-4	0.000	9.041	0	1063242	N.D.	2.882 #

Data Path : Z:\pestpcbsrv\HPCHEM1\ECD_Q\Data\PQ011721\
 Data File : PQ051760.D
 Signal(s) : Signal #1: ECD1A.ch Signal #2: ECD2B.ch
 Acq On : 15 Jan 2021 23:30
 Operator : DD\AJ
 Sample : HEXANE
 Misc :
 ALS Vial : 1 Sample Multiplier: 1

Instrument :
 ECD_O
 ClientSampleId :
 HEXANE

Integration File signal 1: autoint1.e
 Integration File signal 2: autoint2.e
 Quant Time: Jan 16 04:55:05 2021
 Quant Method : Z:\pestpcbsrv\HPCHEM1\ECD_Q\Method\PQ122120CLP.M
 Quant Title : GC EXTRACTABLES
 QLast Update : Tue Dec 22 06:18:29 2020
 Response via : Initial Calibration
 Integrator: ChemStation

Volume Inj. : 1 µl
 Signal #1 Phase : ZB MR1 Signal #2 Phase: ZB MR2
 Signal #1 Info : 30Mx0.32mmx 0.5µm Signal #2 Info : 30M x 0.32mm x 0.25µm

	Compound	RT#1	RT#2	Resp#1	Resp#2	ng/ml	ng/ml
45)	L9 AR-1268-5	11.016f	9.330	36361662	1995233	4.349	0.716 #

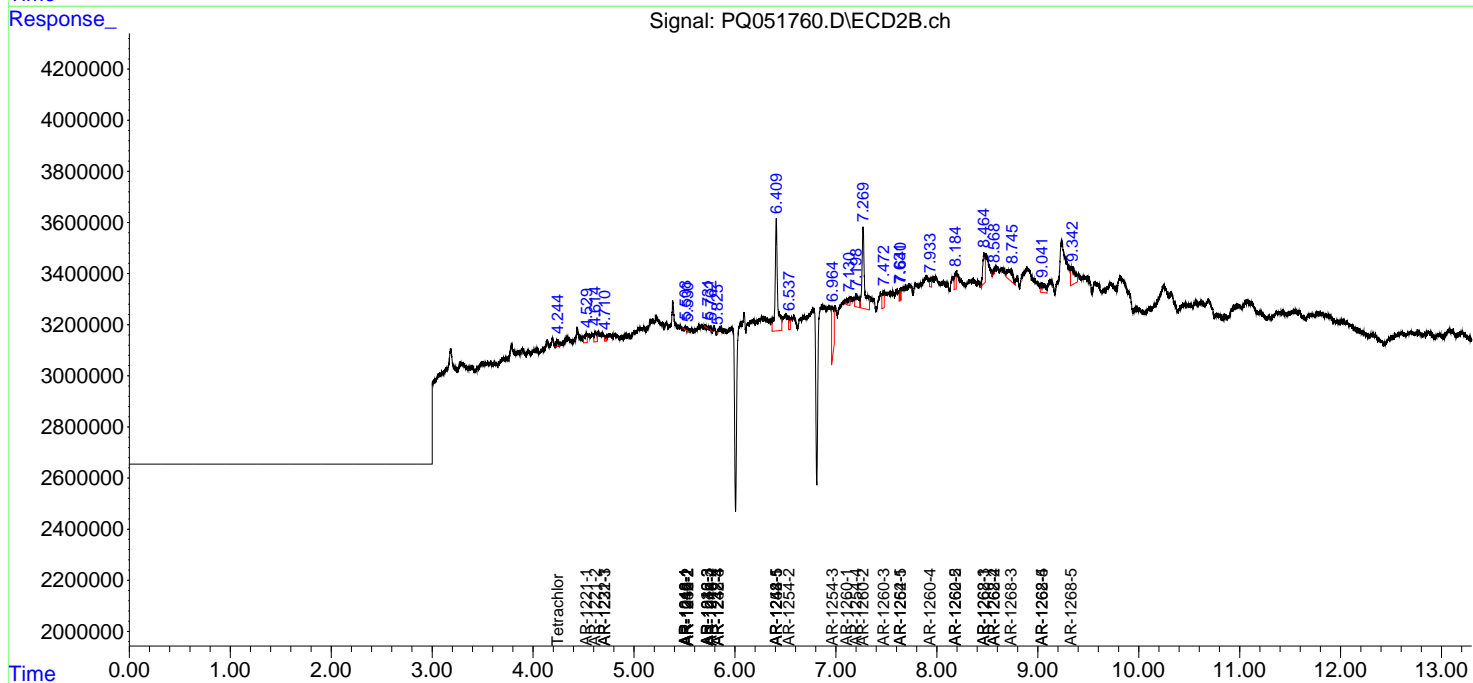
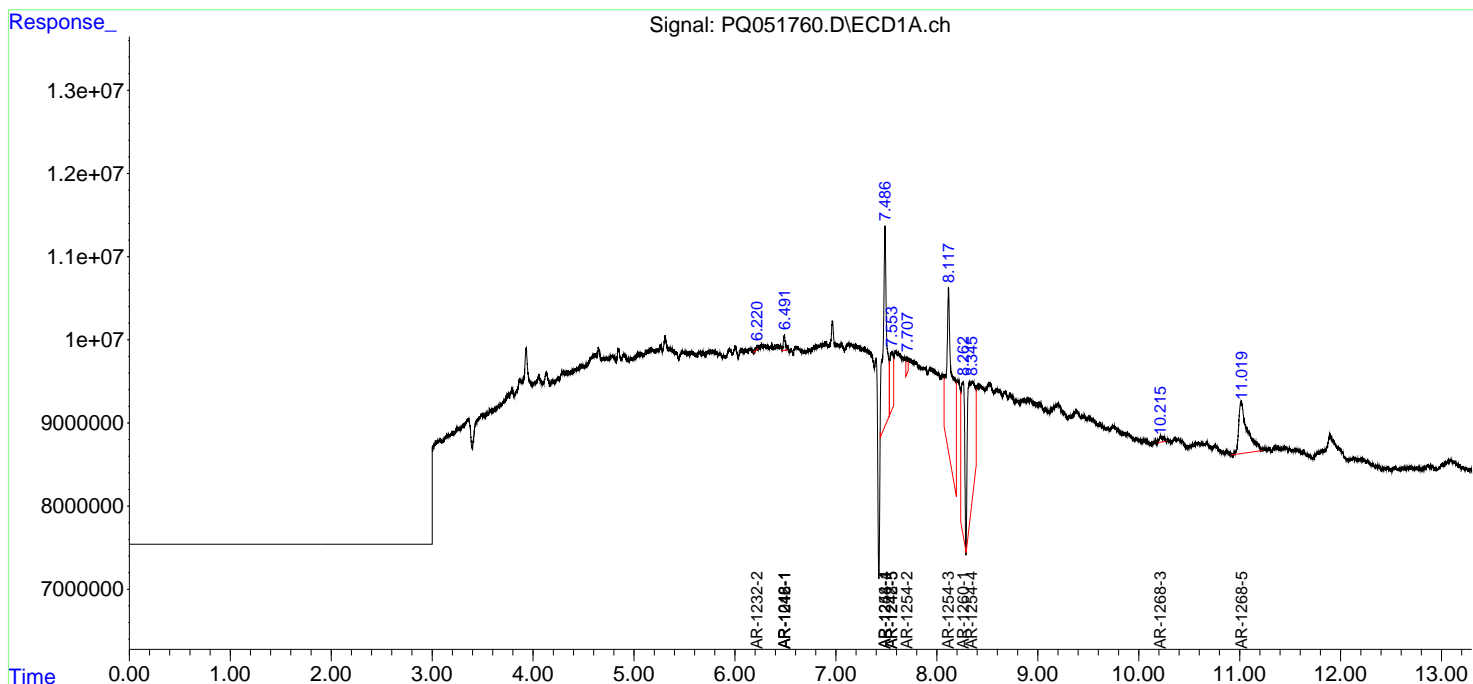
(f)=RT Delta > 1/2 Window (#)=Amounts differ by > 25% (m)=manual int.

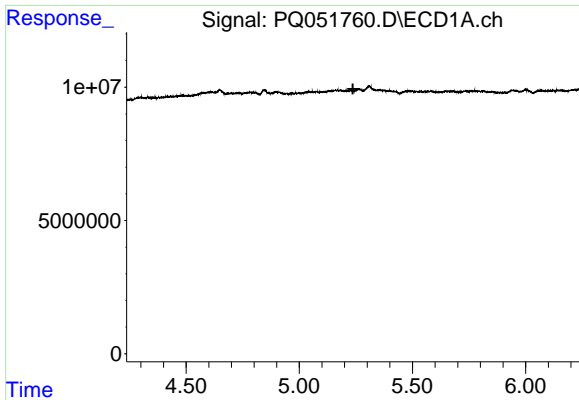
Data Path : Z:\pestpcbsrv\HPCHEM1\ECD_Q\Data\PQ011721\
 Data File : PQ051760.D
 Signal(s) : Signal #1: ECD1A.ch Signal #2: ECD2B.ch
 Acq On : 15 Jan 2021 23:30
 Operator : DD\AJ
 Sample : HEXANE
 Misc :
 ALS Vial : 1 Sample Multiplier: 1

Instrument :
 ECD_O
 ClientSampled :
 HEXANE

Integration File signal 1: autoint1.e
 Integration File signal 2: autoint2.e
 Quant Time: Jan 16 04:55:05 2021
 Quant Method : Z:\pestpcbsrv\HPCHEM1\ECD_Q\Method\PQ122120CLP.M
 Quant Title : GC EXTRACTABLES
 QLast Update : Tue Dec 22 06:18:29 2020
 Response via : Initial Calibration
 Integrator: ChemStation

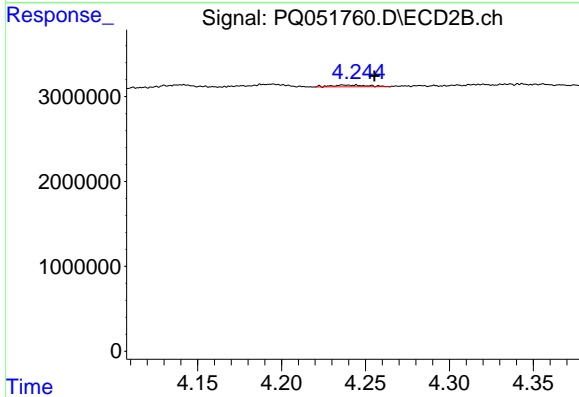
Volume Inj. : 1 µl
 Signal #1 Phase : ZB MR1 Signal #2 Phase: ZB MR2
 Signal #1 Info : 30Mx0.32mmx 0.5µm Signal #2 Info : 30M x 0.32mm x 0.25µm



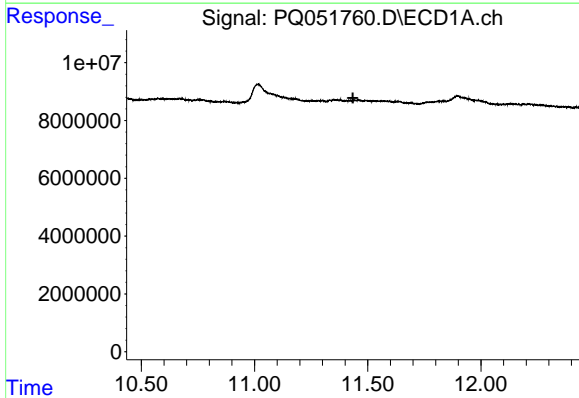


#1 Tetrachloro-m-xylene
 R.T.: 0.000 min
 Exp R.T. : 5.237 min
 Response: 0
 Conc: N.D.

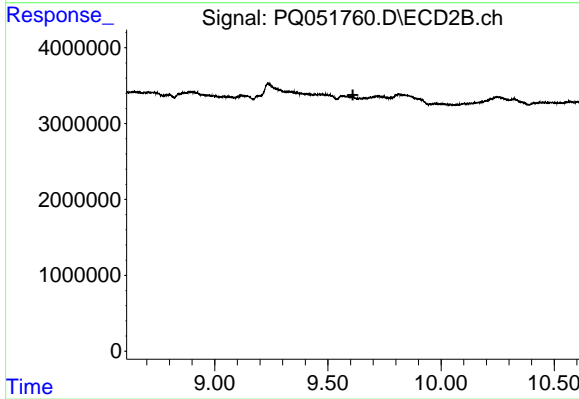
Instrument :
 ECD_O
 ClientSampleId :
 HEXANE



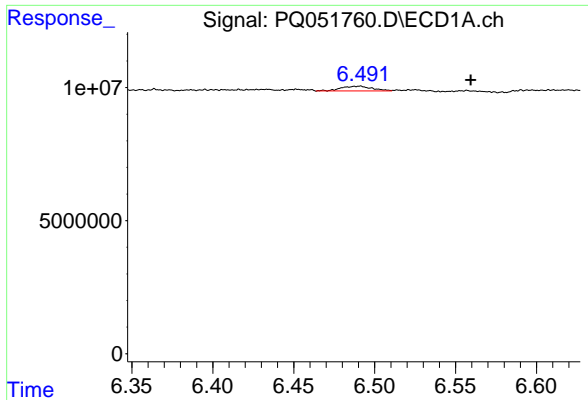
#1 Tetrachloro-m-xylene
 R.T.: 4.237 min
 Delta R.T.: -0.018 min
 Response: 318141
 Conc: 0.04 ng/ml



#2 Decachlorobiphenyl
 R.T.: 0.000 min
 Exp R.T. : 11.435 min
 Response: 0
 Conc: N.D.



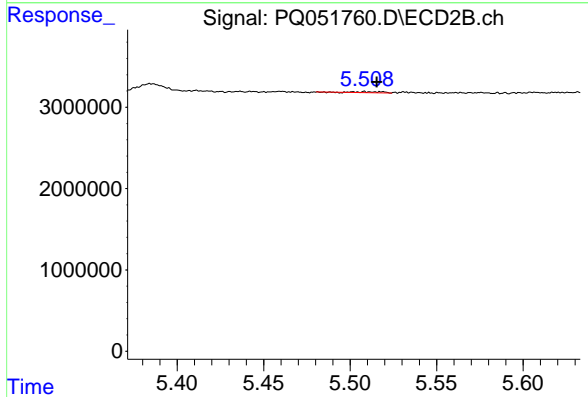
#2 Decachlorobiphenyl
 R.T.: 0.000 min
 Exp R.T. : 9.611 min
 Response: 0
 Conc: N.D.



#3 AR-1016-1

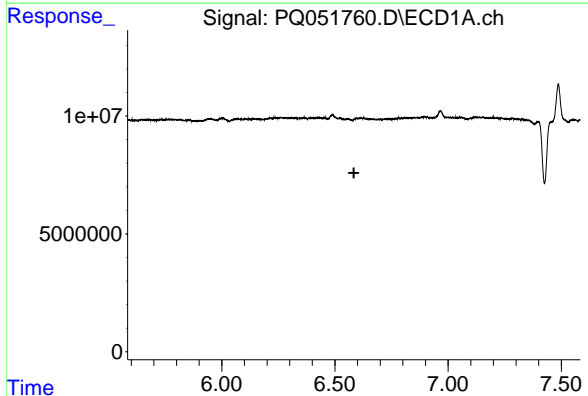
R.T.: 6.491 min
Delta R.T.: -0.069 min
Response: 2409230
Conc: 2.85 ng/ml

Instrument :
ECD_O
ClientSampleId :
HEXANE



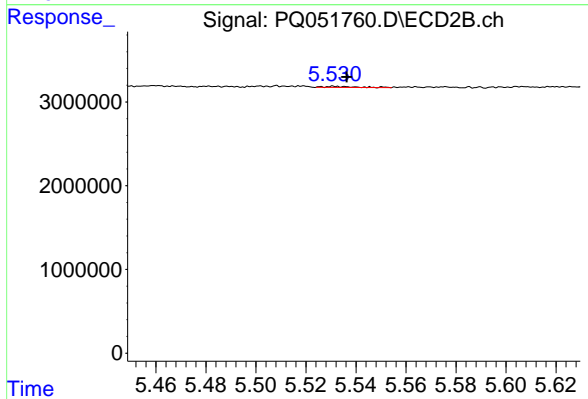
#3 AR-1016-1

R.T.: 5.509 min
Delta R.T.: -0.007 min
Response: 114653
Conc: 0.45 ng/ml



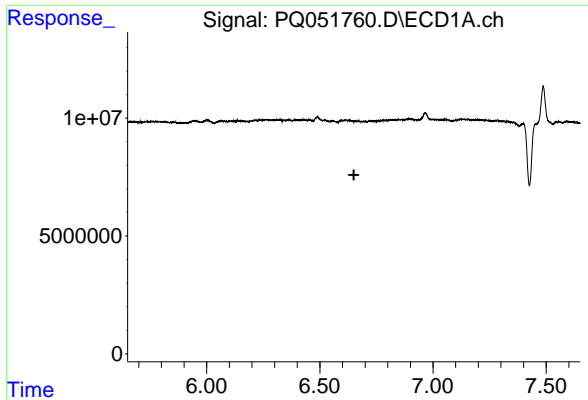
#4 AR-1016-2

R.T.: 0.000 min
Exp R.T. : 6.584 min
Response: 0
Conc: N.D.



#4 AR-1016-2

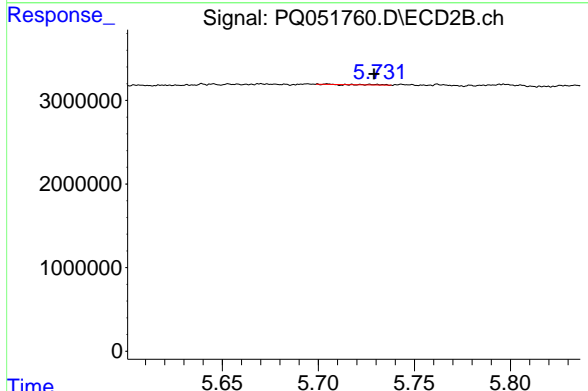
R.T.: 5.531 min
Delta R.T.: -0.005 min
Response: 107917
Conc: 0.30 ng/ml



#5 AR-1016-3

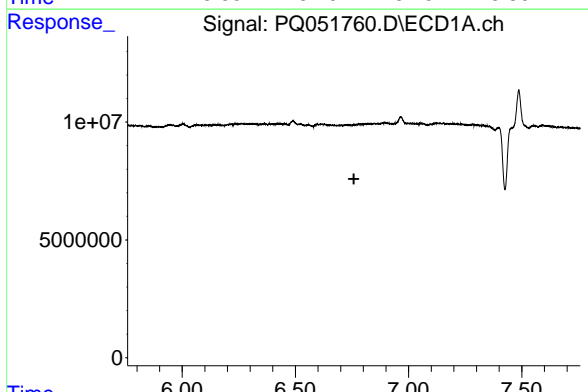
R.T.: 0.000 min
 Exp R.T.: 6.651 min
 Response: 0
 Conc: N.D.

Instrument :
 ECD_O
 ClientSampleId :
 HEXANE



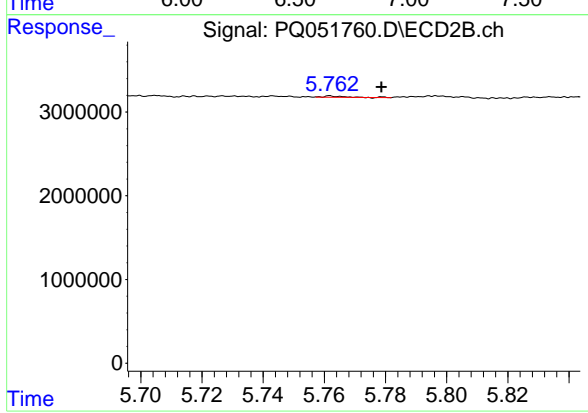
#5 AR-1016-3

R.T.: 5.728 min
 Delta R.T.: -0.001 min
 Response: 26420
 Conc: 0.14 ng/ml



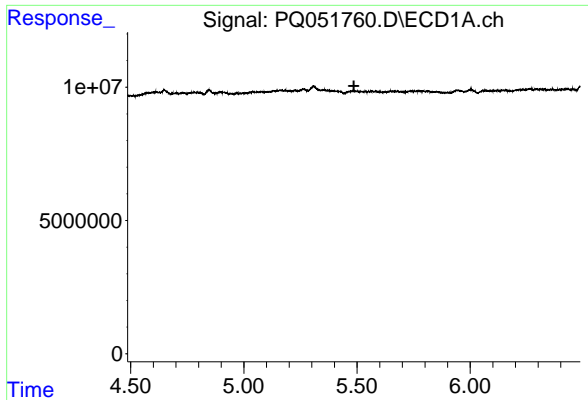
#6 AR-1016-4

R.T.: 0.000 min
 Exp R.T.: 6.759 min
 Response: 0
 Conc: N.D.



#6 AR-1016-4

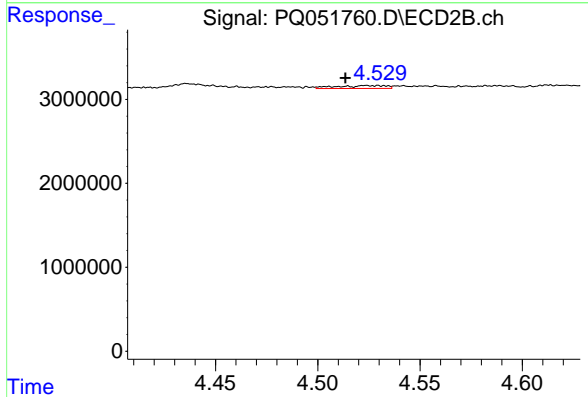
R.T.: 5.762 min
 Delta R.T.: -0.016 min
 Response: 71682
 Conc: 0.50 ng/ml



#8 AR-1221-1

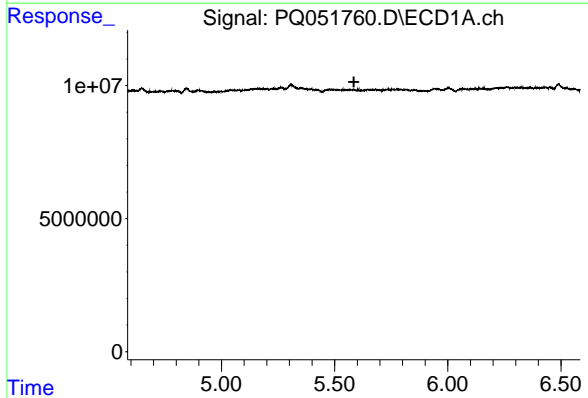
R.T.: 0.000 min
 Exp R.T. : 5.486 min
 Response: 0
 Conc: N.D.

Instrument :
 ECD_O
 ClientSampleId :
 HEXANE



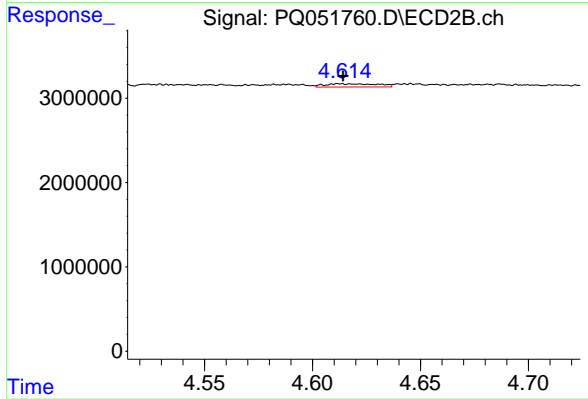
#8 AR-1221-1

R.T.: 4.523 min
 Delta R.T.: 0.010 min
 Response: 591449
 Conc: 7.67 ng/ml



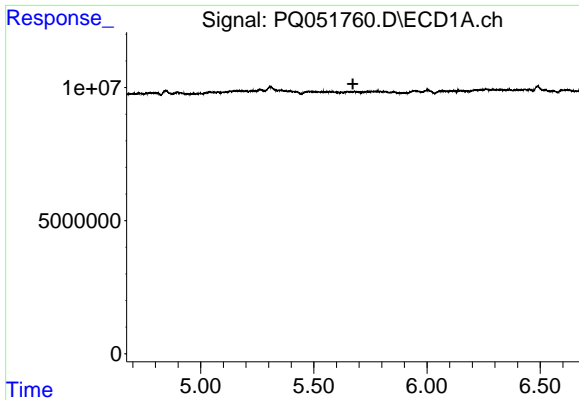
#9 AR-1221-2

R.T.: 0.000 min
 Exp R.T. : 5.585 min
 Response: 0
 Conc: N.D.



#9 AR-1221-2

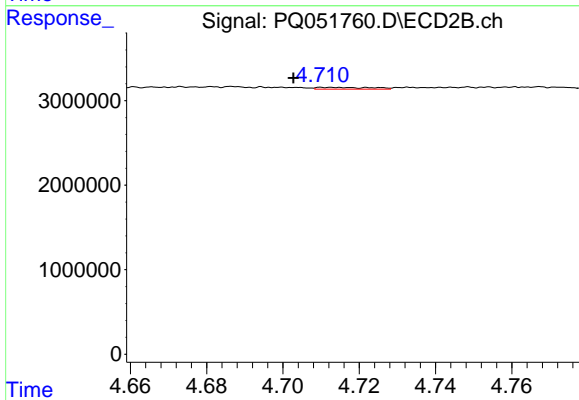
R.T.: 4.612 min
 Delta R.T.: -0.002 min
 Response: 654687
 Conc: 12.24 ng/ml



#10 AR-1221-3

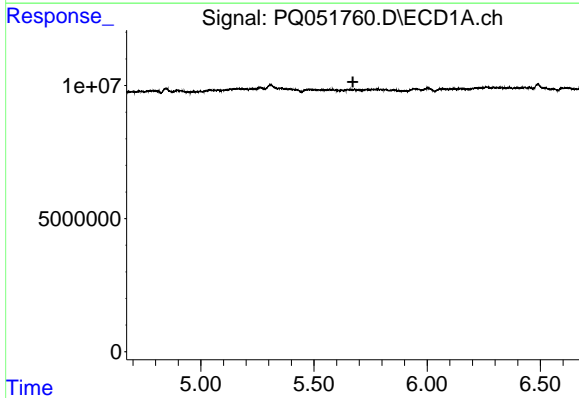
R.T.: 0.000 min
 Exp R.T. : 5.672 min
 Response: 0
 Conc: N.D.

Instrument :
 ECD_O
 ClientSampleId :
 HEXANE



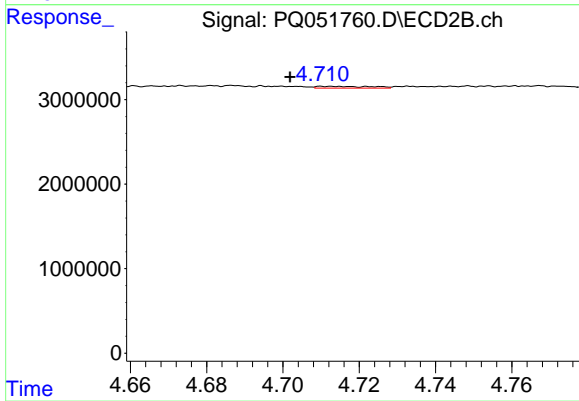
#10 AR-1221-3

R.T.: 4.712 min
 Delta R.T.: 0.010 min
 Response: 215244
 Conc: 1.18 ng/ml



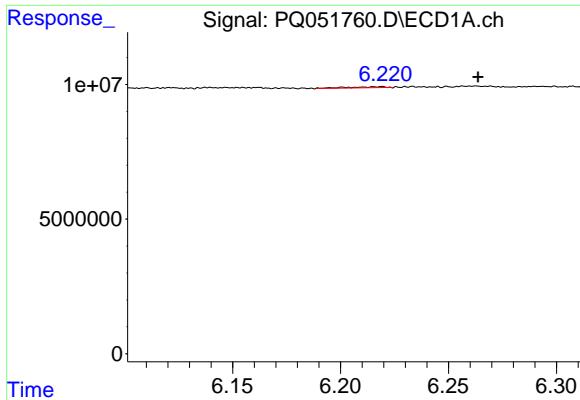
#11 AR-1232-1

R.T.: 0.000 min
 Exp R.T. : 5.672 min
 Response: 0
 Conc: N.D.



#11 AR-1232-1

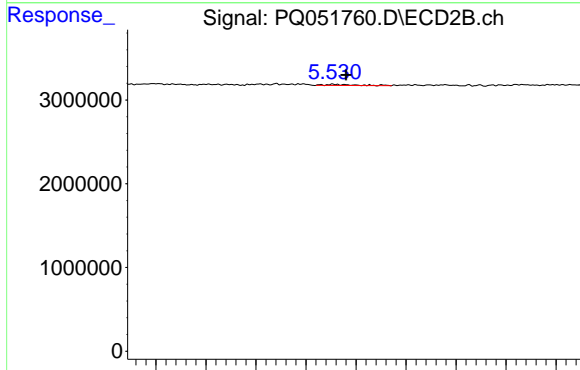
R.T.: 4.712 min
 Delta R.T.: 0.011 min
 Response: 215244
 Conc: 1.57 ng/ml



#12 AR-1232-2

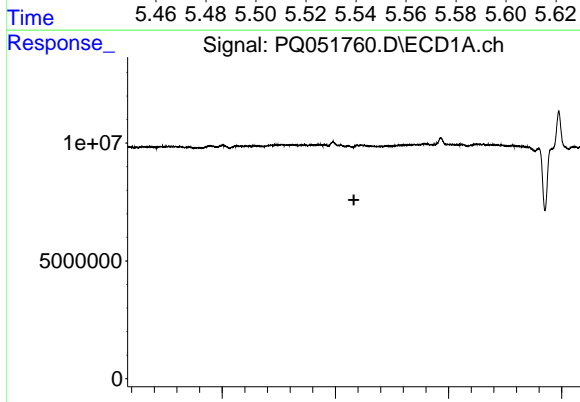
R.T.: 6.219 min
 Delta R.T.: -0.045 min
 Response: 465760
 Conc: 1.89 ng/ml

Instrument :
 ECD_O
 ClientSampled :
 HEXANE



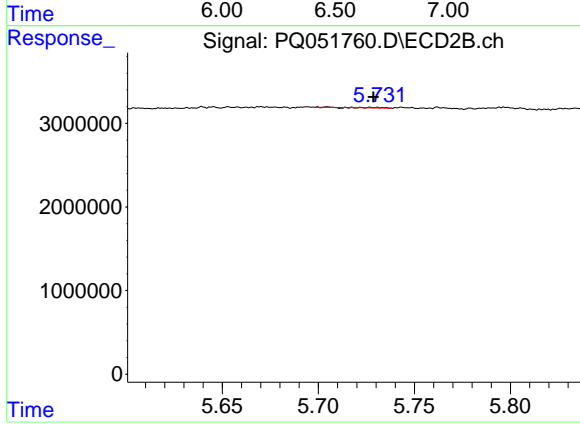
#12 AR-1232-2

R.T.: 5.531 min
 Delta R.T.: -0.005 min
 Response: 107917
 Conc: 0.77 ng/ml



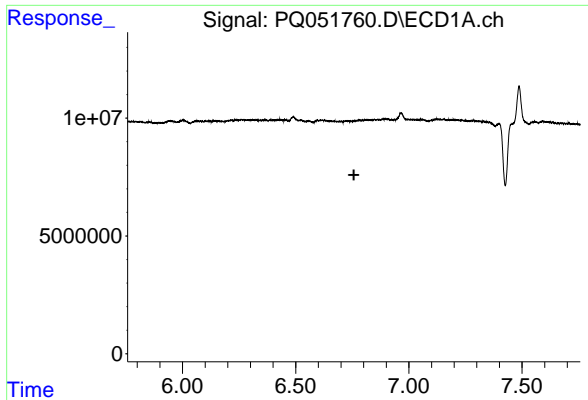
#13 AR-1232-3

R.T.: 0.000 min
 Exp R.T. : 6.582 min
 Response: 0
 Conc: N.D.



#13 AR-1232-3

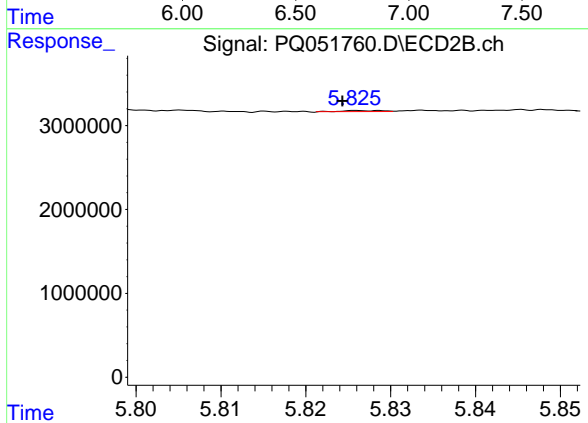
R.T.: 5.728 min
 Delta R.T.: -0.001 min
 Response: 26420
 Conc: 0.37 ng/ml



#14 AR-1232-4

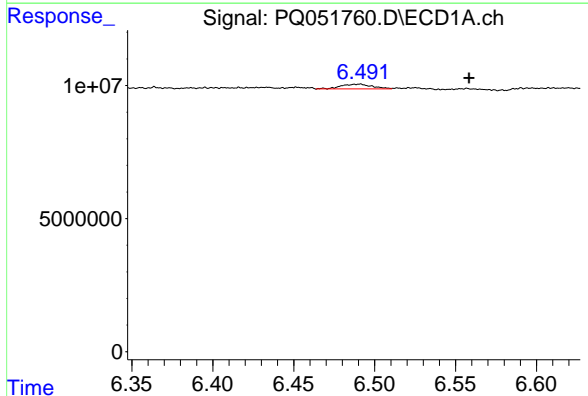
R.T.: 0.000 min
 Exp R.T.: 6.757 min
 Response: 0
 Conc: N.D.

Instrument :
 ECD_O
 ClientSampleId :
 HEXANE



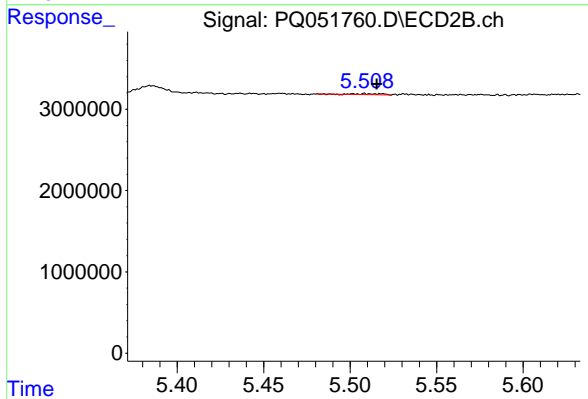
#14 AR-1232-4

R.T.: 5.828 min
 Delta R.T.: 0.003 min
 Response: 37144
 Conc: 0.60 ng/ml



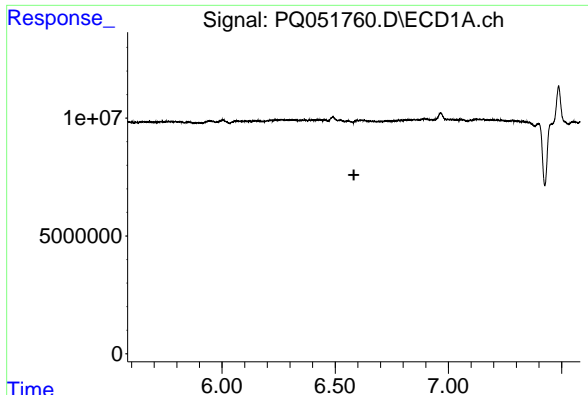
#16 AR-1242-1

R.T.: 6.491 min
 Delta R.T.: -0.068 min
 Response: 2409230
 Conc: 3.43 ng/ml



#16 AR-1242-1

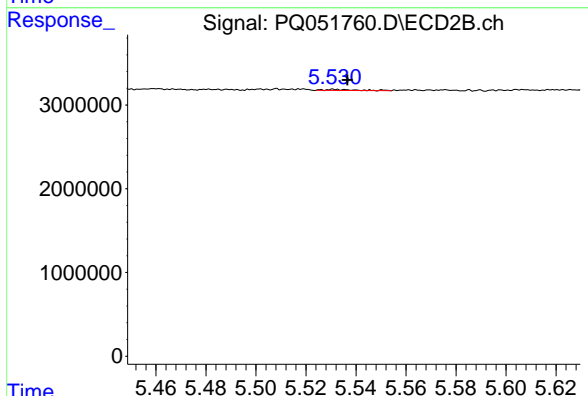
R.T.: 5.509 min
 Delta R.T.: -0.007 min
 Response: 114653
 Conc: 0.55 ng/ml



#17 AR-1242-2

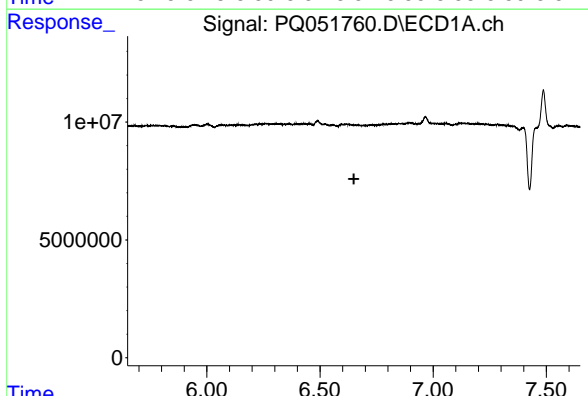
R.T.: 0.000 min
 Exp R.T. : 6.583 min
 Response: 0
 Conc: N.D.

Instrument :
 ECD_O
 ClientSampleId :
 HEXANE



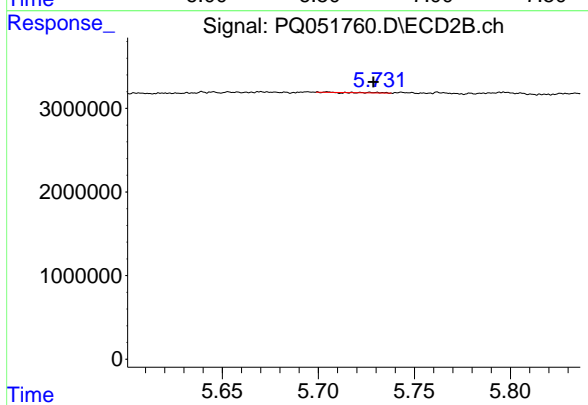
#17 AR-1242-2

R.T.: 5.531 min
 Delta R.T.: -0.006 min
 Response: 107917
 Conc: 0.37 ng/ml



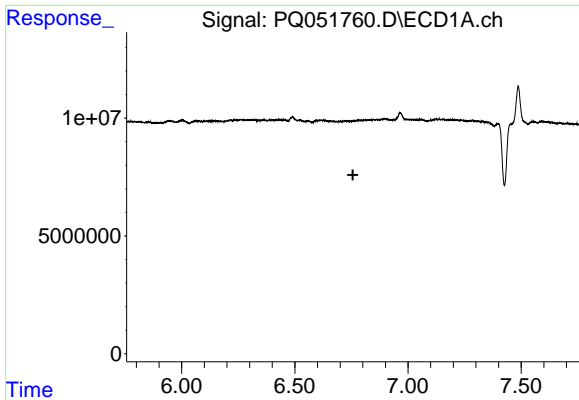
#18 AR-1242-3

R.T.: 0.000 min
 Exp R.T. : 6.650 min
 Response: 0
 Conc: N.D.



#18 AR-1242-3

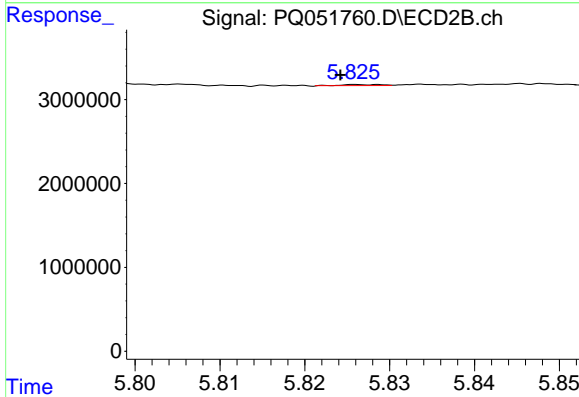
R.T.: 5.728 min
 Delta R.T.: -0.001 min
 Response: 26420
 Conc: 0.18 ng/ml



#19 AR-1242-4

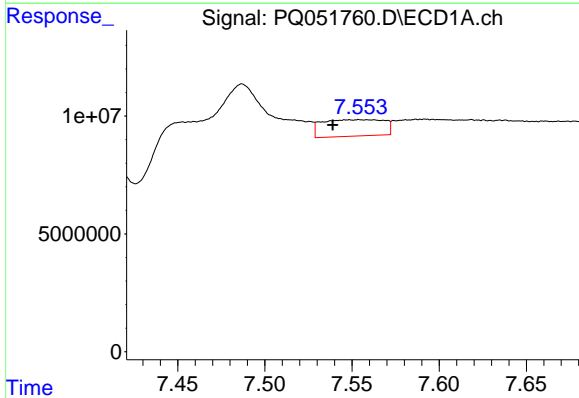
R.T.: 0.000 min
 Exp R.T.: 6.757 min
 Response: 0
 Conc: N.D.

Instrument :
 ECD_O
 ClientSampleId :
 HEXANE



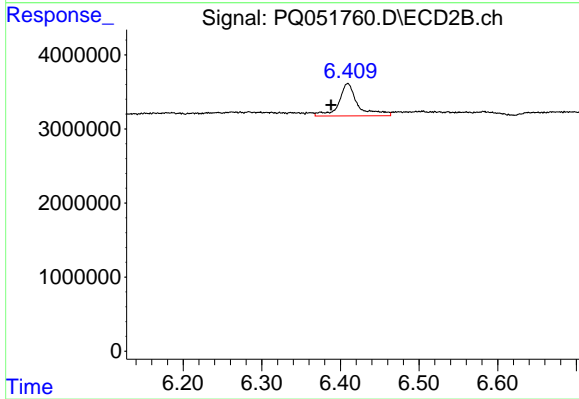
#19 AR-1242-4

R.T.: 5.828 min
 Delta R.T.: 0.003 min
 Response: 37144
 Conc: 0.26 ng/ml



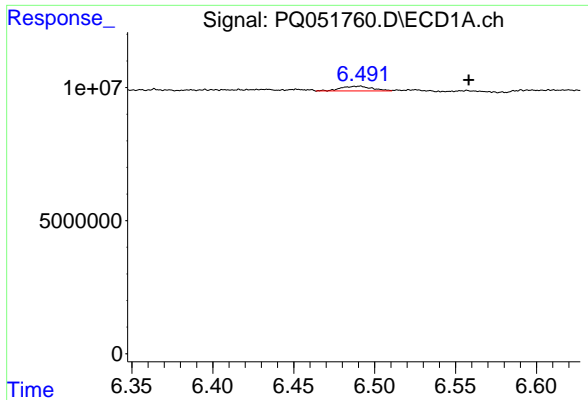
#20 AR-1242-5

R.T.: 7.554 min
 Delta R.T.: 0.015 min
 Response: 17275630
 Conc: 31.34 ng/ml



#20 AR-1242-5

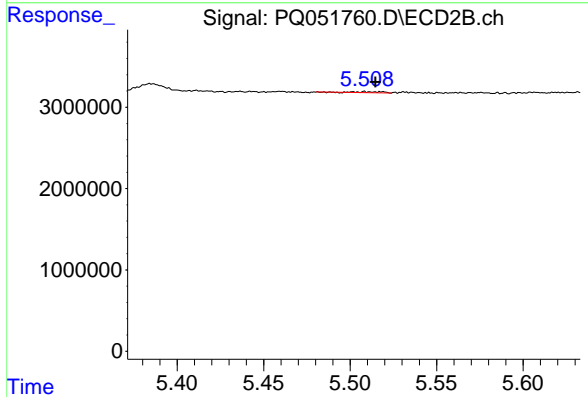
R.T.: 6.409 min
 Delta R.T.: 0.021 min
 Response: 7377614
 Conc: 38.61 ng/ml



#21 AR-1248-1

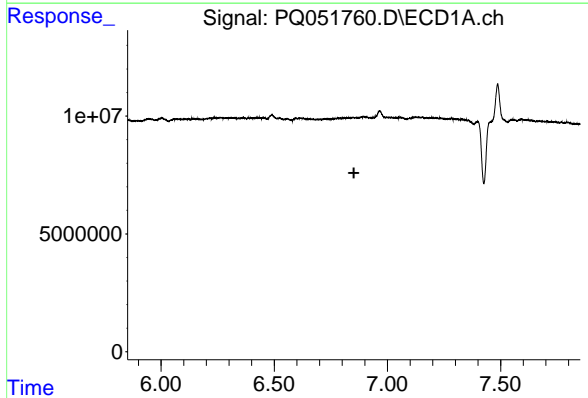
R.T.: 6.491 min
 Delta R.T.: -0.067 min
 Response: 2409230
 Conc: 4.26 ng/ml

Instrument :
 ECD_O
 ClientSampled :
 HEXANE



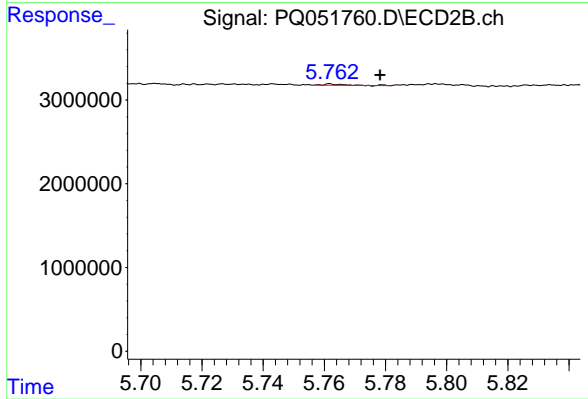
#21 AR-1248-1

R.T.: 5.509 min
 Delta R.T.: -0.006 min
 Response: 114653
 Conc: 0.68 ng/ml



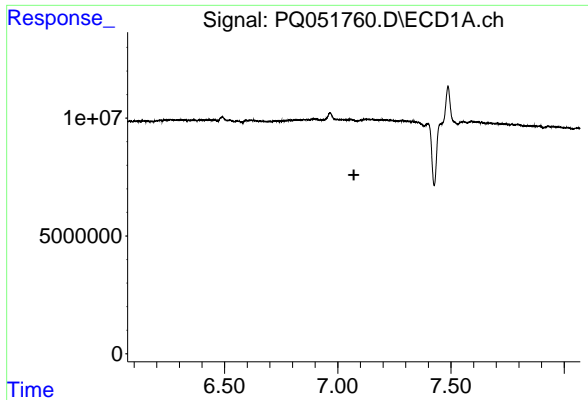
#22 AR-1248-2

R.T.: 0.000 min
 Exp R.T. : 6.852 min
 Response: 0
 Conc: N.D.



#22 AR-1248-2

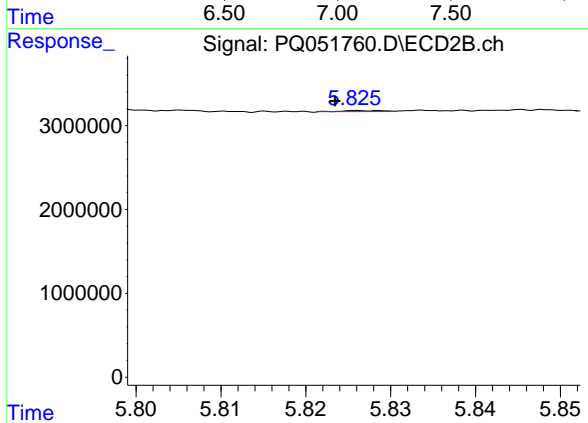
R.T.: 5.762 min
 Delta R.T.: -0.016 min
 Response: 71682
 Conc: 0.32 ng/ml



#23 AR-1248-3

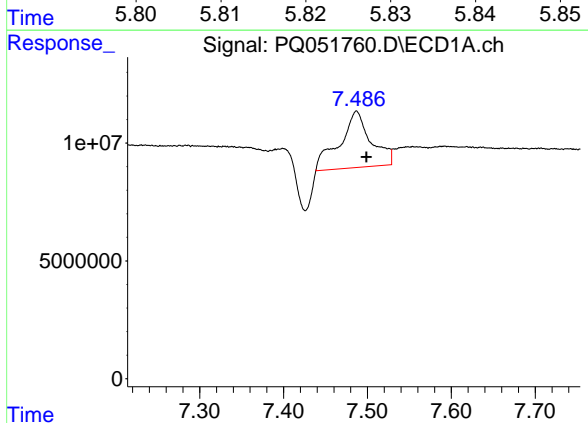
R.T.: 0.000 min
 Exp R.T.: 7.071 min
 Response: 0
 Conc: N.D.

Instrument :
 ECD_O
 ClientSampleId :
 HEXANE



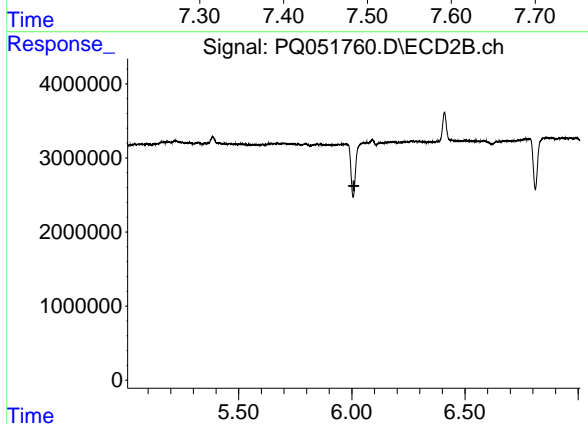
#23 AR-1248-3

R.T.: 5.828 min
 Delta R.T.: 0.004 min
 Response: 37144
 Conc: 0.16 ng/ml



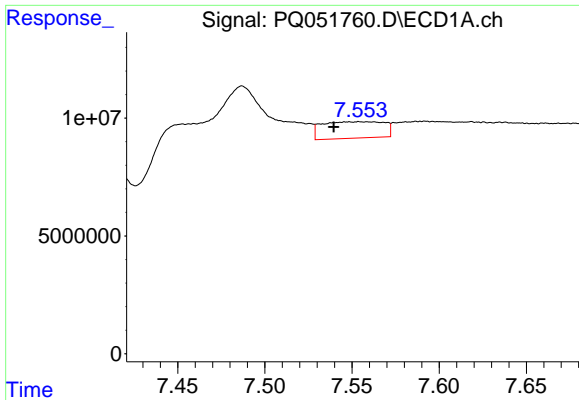
#24 AR-1248-4

R.T.: 7.487 min
 Delta R.T.: -0.012 min
 Response: 62089717
 Conc: 58.51 ng/ml



#24 AR-1248-4

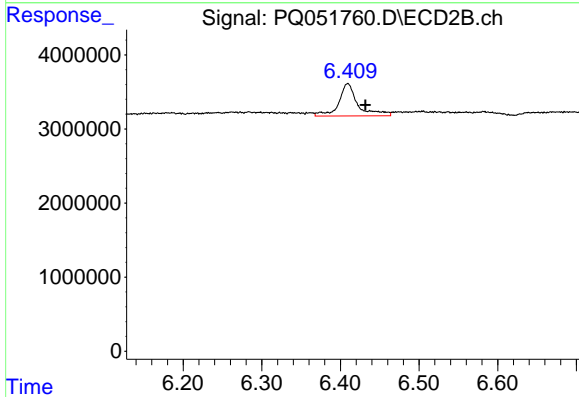
R.T.: 6.052 min
 Delta R.T.: 0.043 min
 Response: -7662566
 Conc: N.D.



#25 AR-1248-5

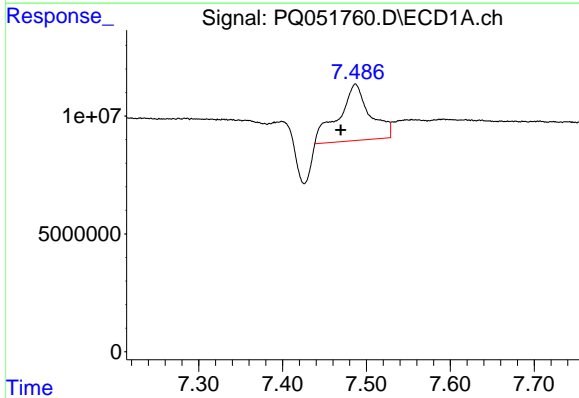
R.T.: 7.554 min
 Delta R.T.: 0.015 min
 Response: 17275630
 Conc: 16.65 ng/ml

Instrument :
 ECD_O
 ClientSampleId :
 HEXANE



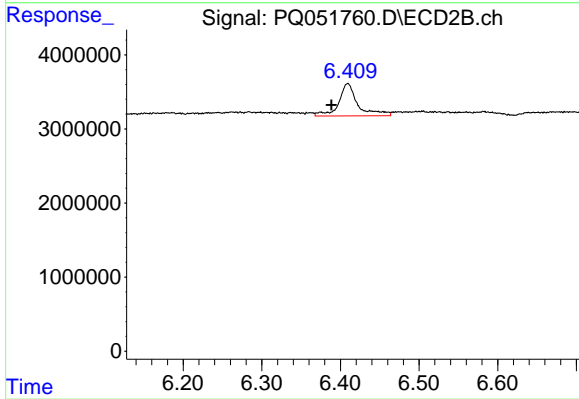
#25 AR-1248-5

R.T.: 6.409 min
 Delta R.T.: -0.022 min
 Response: 7377614
 Conc: 25.57 ng/ml



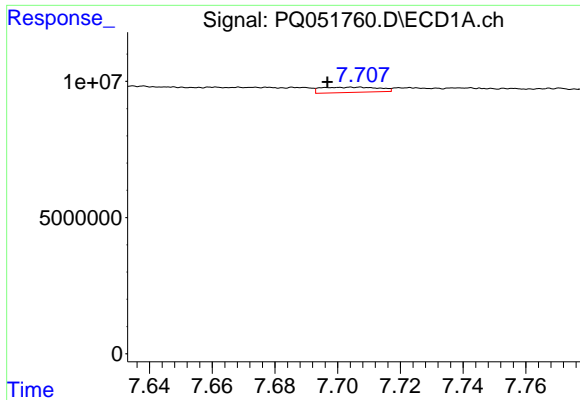
#26 AR-1254-1

R.T.: 7.487 min
 Delta R.T.: 0.018 min
 Response: 62089717
 Conc: 63.13 ng/ml



#26 AR-1254-1

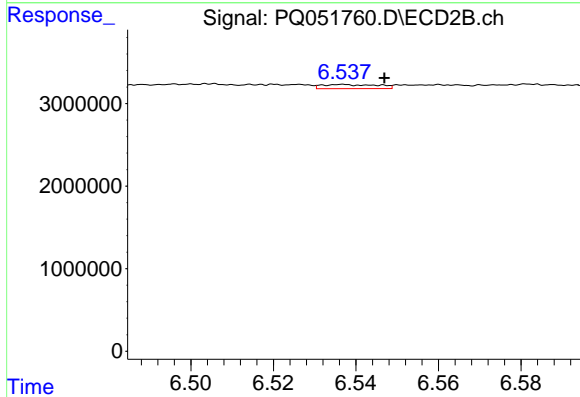
R.T.: 6.409 min
 Delta R.T.: 0.021 min
 Response: 7377614
 Conc: 17.38 ng/ml



#27 AR-1254-2

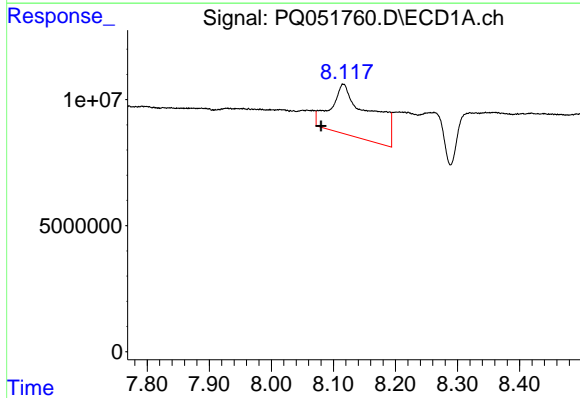
R.T.: 7.706 min
 Delta R.T.: 0.009 min
 Response: 2483473
 Conc: 1.63 ng/ml

Instrument :
 ECD_O
 ClientSampled :
 HEXANE



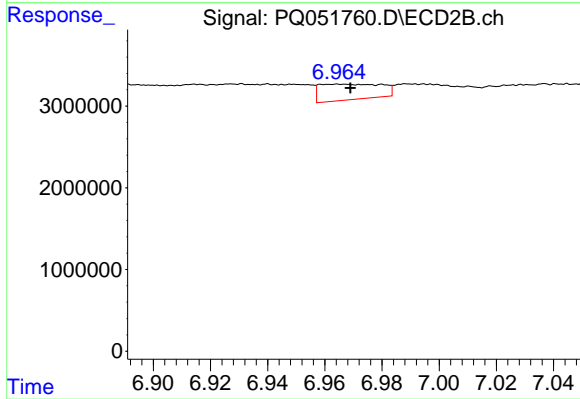
#27 AR-1254-2

R.T.: 6.537 min
 Delta R.T.: -0.010 min
 Response: 475826
 Conc: 1.30 ng/ml



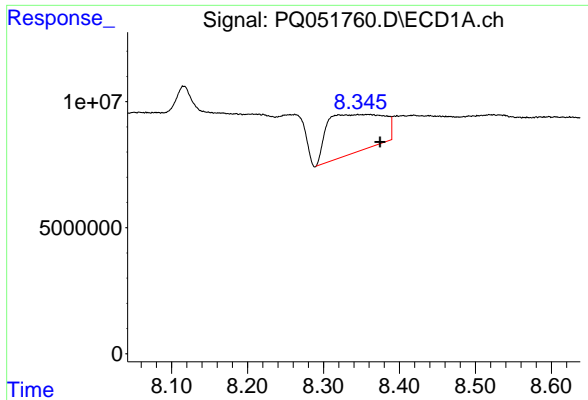
#28 AR-1254-3

R.T.: 8.116 min
 Delta R.T.: 0.036 min
 Response: 88139598
 Conc: 53.34 ng/ml



#28 AR-1254-3

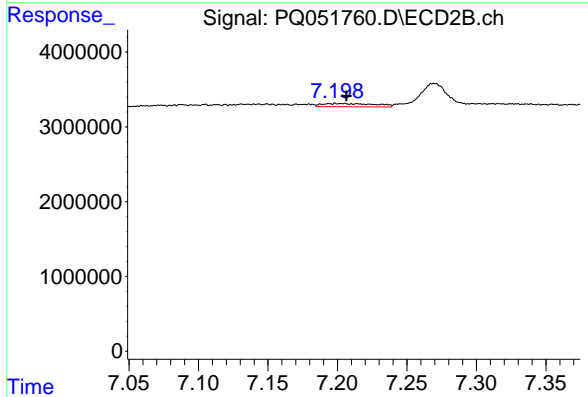
R.T.: 6.965 min
 Delta R.T.: -0.004 min
 Response: 2850735
 Conc: 4.67 ng/ml



#29 AR-1254-4

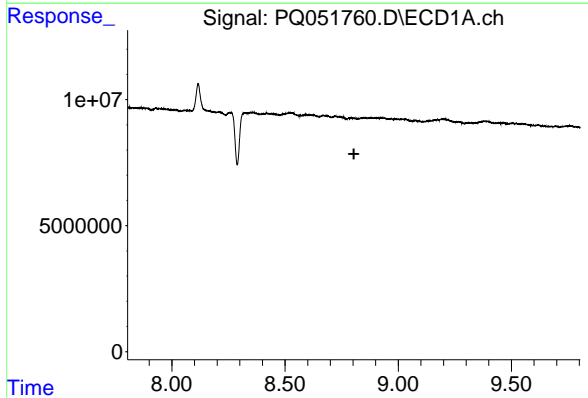
R.T.: 8.345 min
 Delta R.T.: -0.029 min
 Response: 77711785
 Conc: 65.36 ng/ml

Instrument :
 ECD_O
 ClientSampled :
 HEXANE



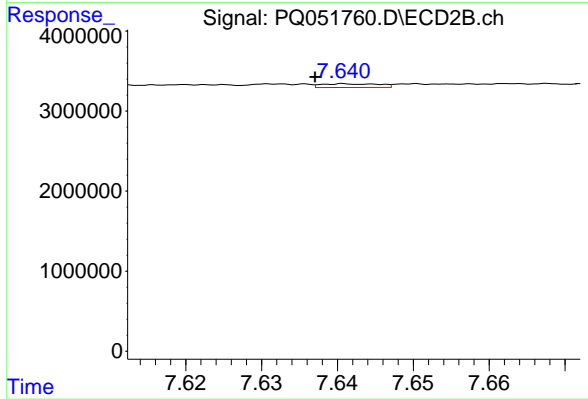
#29 AR-1254-4

R.T.: 7.199 min
 Delta R.T.: -0.008 min
 Response: 1170772
 Conc: 3.10 ng/ml



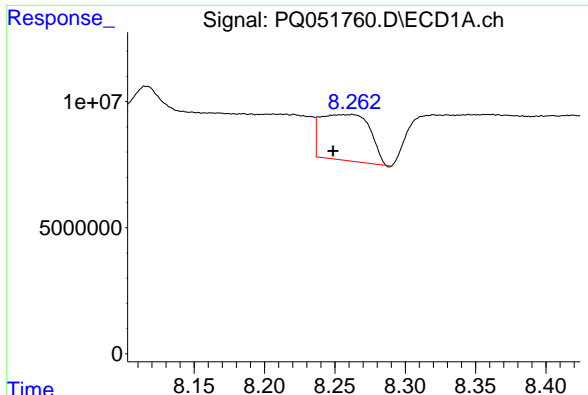
#30 AR-1254-5

R.T.: 0.000 min
 Exp R.T. : 8.804 min
 Response: 0
 Conc: N.D.



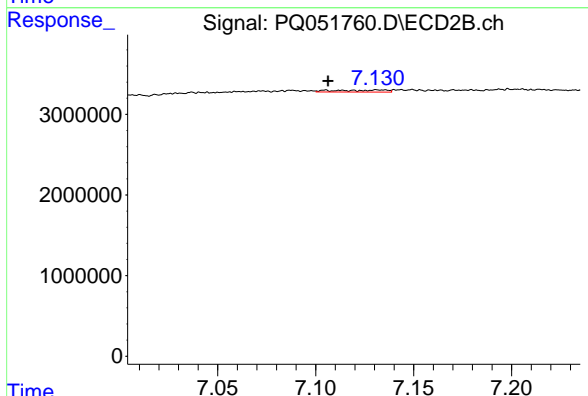
#30 AR-1254-5

R.T.: 7.641 min
 Delta R.T.: 0.004 min
 Response: 245429
 Conc: 0.47 ng/ml

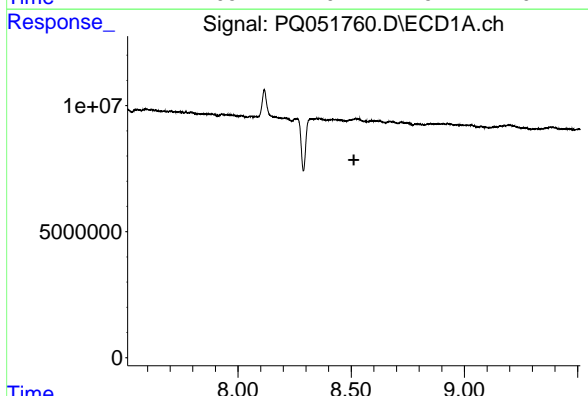


#31 AR-1260-1
 R.T.: 8.262 min
 Delta R.T.: 0.014 min
 Response: 43177959
 Conc: 41.69 ng/ml

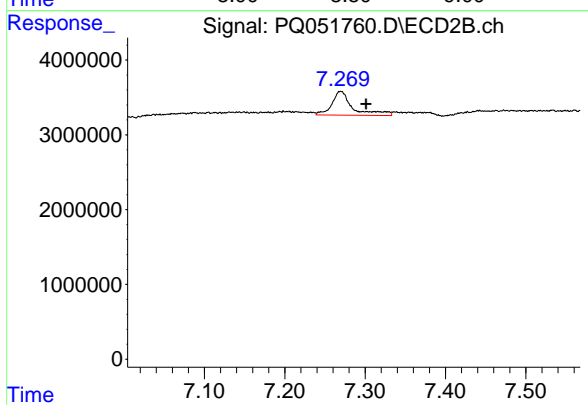
Instrument :
 ECD_O
 ClientSampled :
 HEXANE



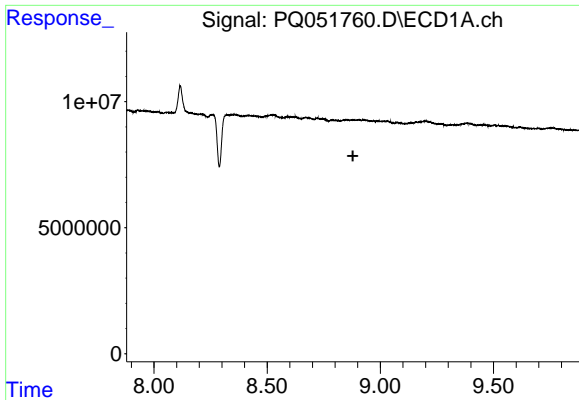
#31 AR-1260-1
 R.T.: 7.105 min
 Delta R.T.: -0.001 min
 Response: 453646
 Conc: 1.28 ng/ml



#32 AR-1260-2
 R.T.: 0.000 min
 Exp R.T. : 8.512 min
 Response: 0
 Conc: N.D.



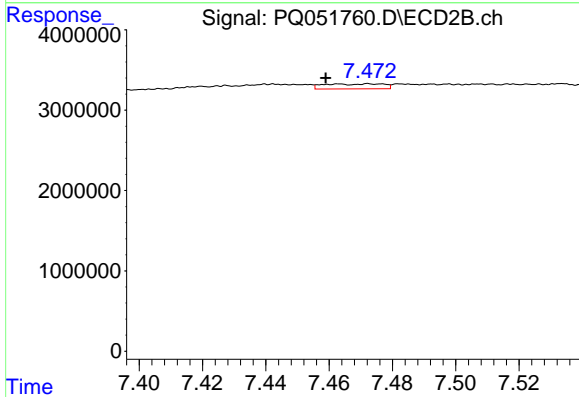
#32 AR-1260-2
 R.T.: 7.270 min
 Delta R.T.: -0.032 min
 Response: 5758060
 Conc: 13.02 ng/ml



#33 AR-1260-3

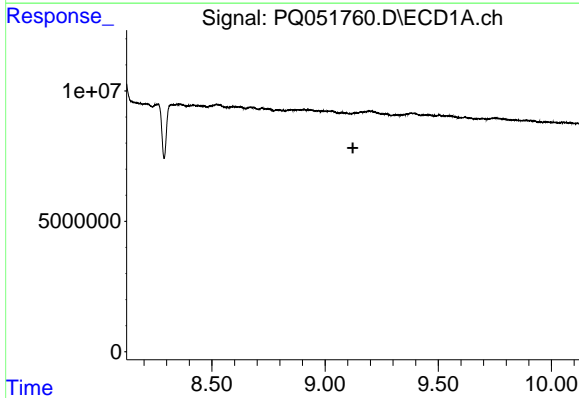
R.T.: 0.000 min
 Exp R.T.: 8.879 min
 Response: 0
 Conc: N.D.

Instrument :
 ECD_O
 ClientSampleId :
 HEXANE



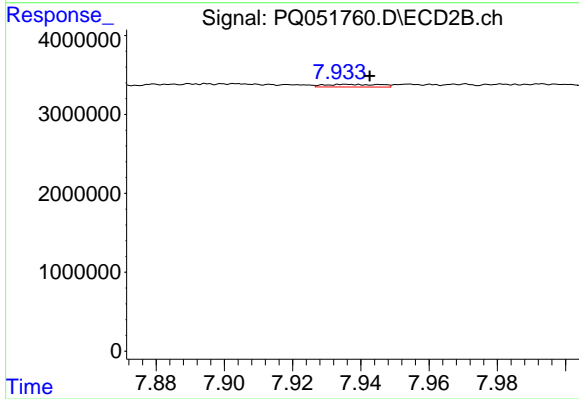
#33 AR-1260-3

R.T.: 7.473 min
 Delta R.T.: 0.014 min
 Response: 824452
 Conc: 1.99 ng/ml



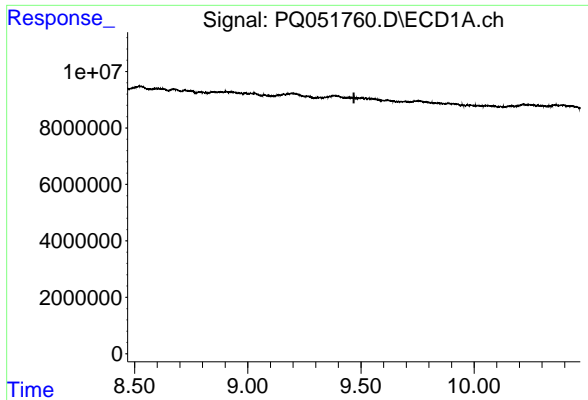
#34 AR-1260-4

R.T.: 0.000 min
 Exp R.T.: 9.123 min
 Response: 0
 Conc: N.D.



#34 AR-1260-4

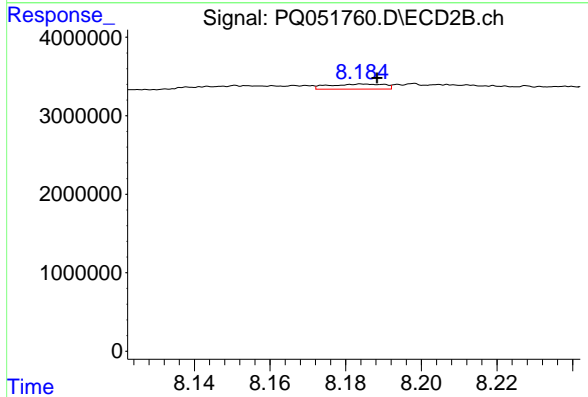
R.T.: 7.936 min
 Delta R.T.: -0.007 min
 Response: 369881
 Conc: 1.07 ng/ml



#35 AR-1260-5

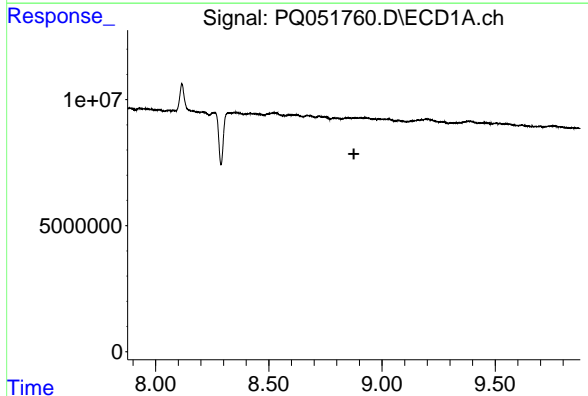
R.T.: 0.000 min
 Exp R.T.: 9.469 min
 Response: 0
 Conc: N.D.

Instrument :
 ECD_O
 ClientSampleId :
 HEXANE



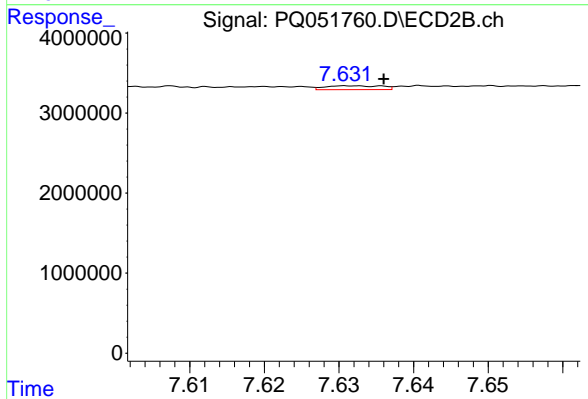
#35 AR-1260-5

R.T.: 8.185 min
 Delta R.T.: -0.004 min
 Response: 663617
 Conc: 0.77 ng/ml



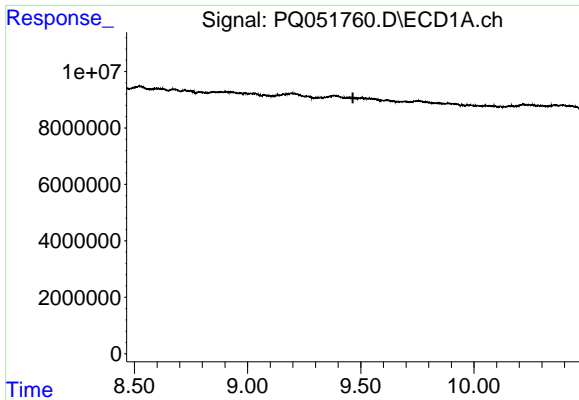
#36 AR-1262-1

R.T.: 0.000 min
 Exp R.T.: 8.876 min
 Response: 0
 Conc: N.D.



#36 AR-1262-1

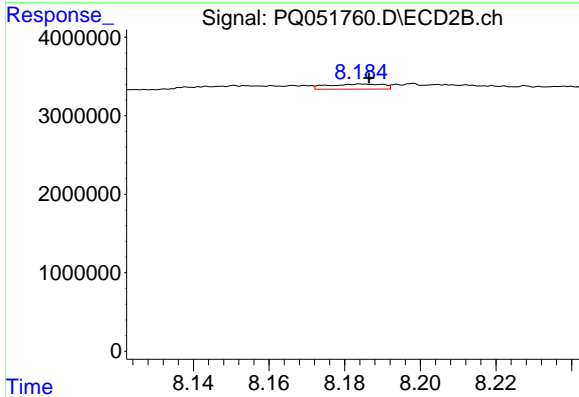
R.T.: 7.632 min
 Delta R.T.: -0.004 min
 Response: 246749
 Conc: 0.86 ng/ml



#37 AR-1262-2

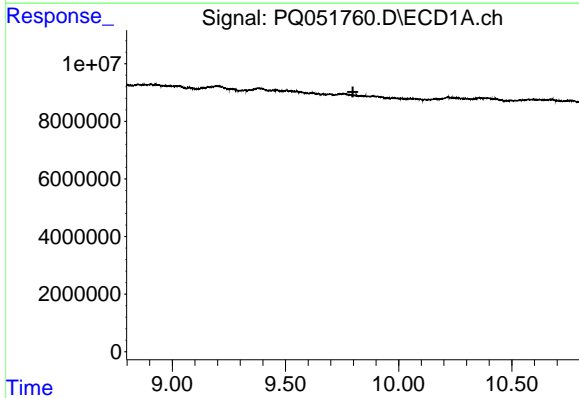
R.T.: 0.000 min
 Exp R.T.: 9.465 min
 Response: 0
 Conc: N.D.

Instrument :
 ECD_O
 ClientSampleId :
 HEXANE



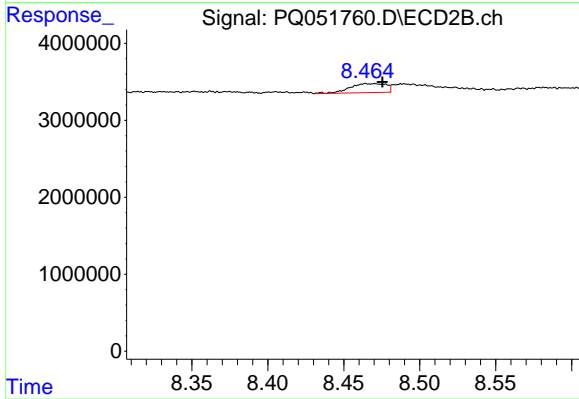
#37 AR-1262-2

R.T.: 8.185 min
 Delta R.T.: -0.002 min
 Response: 663617
 Conc: 0.65 ng/ml



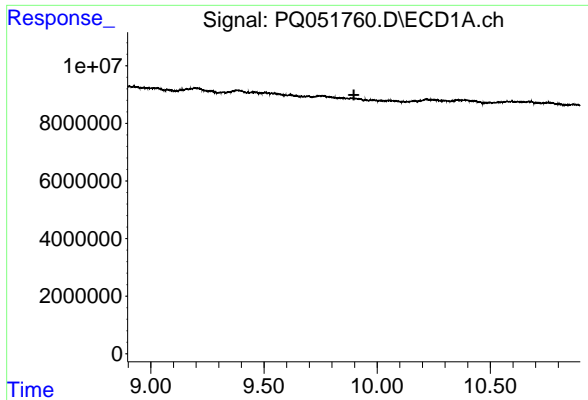
#38 AR-1262-3

R.T.: 0.000 min
 Exp R.T.: 9.798 min
 Response: 0
 Conc: N.D.



#38 AR-1262-3

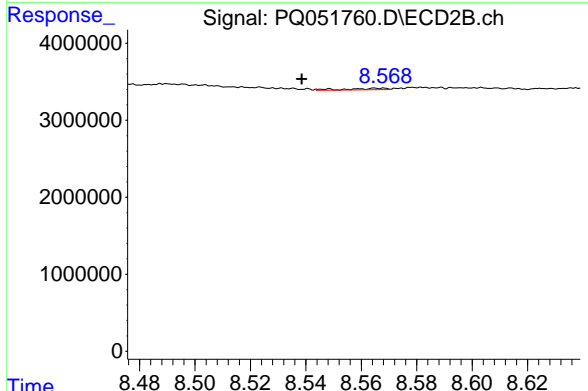
R.T.: 8.464 min
 Delta R.T.: -0.011 min
 Response: 1924837
 Conc: 5.12 ng/ml



#39 AR-1262-4

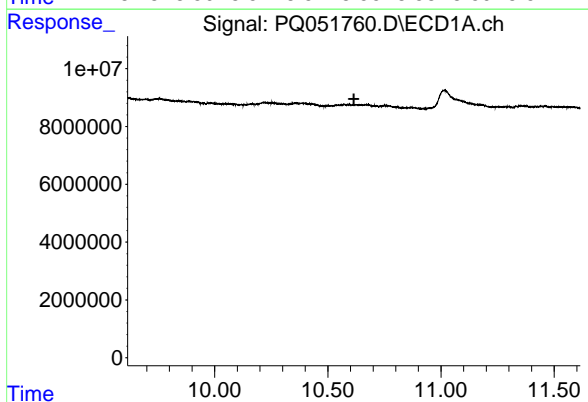
R.T.: 0.000 min
 Exp R.T.: 9.897 min
 Response: 0
 Conc: N.D.

Instrument :
 ECD_O
 ClientSampleId :
 HEXANE



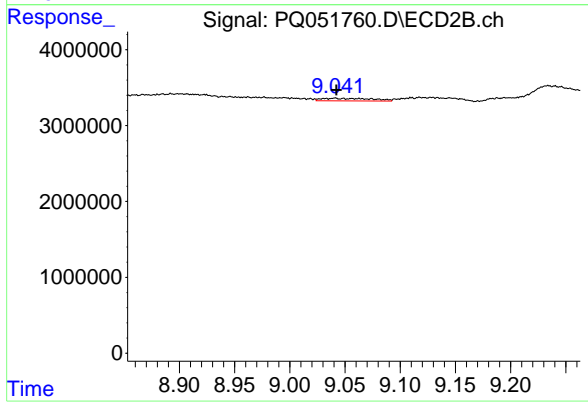
#39 AR-1262-4

R.T.: 8.566 min
 Delta R.T.: 0.028 min
 Response: 187448
 Conc: 0.26 ng/ml



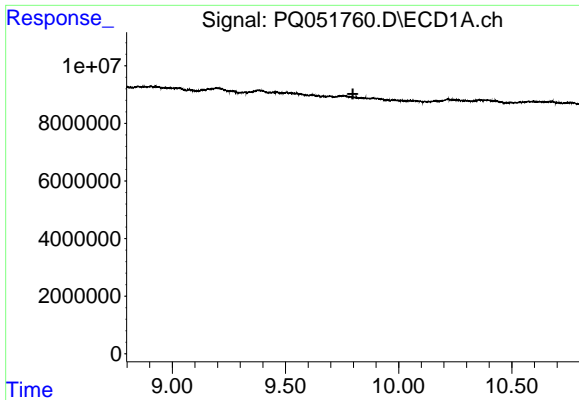
#40 AR-1262-5

R.T.: 0.000 min
 Exp R.T.: 10.615 min
 Response: 0
 Conc: N.D.



#40 AR-1262-5

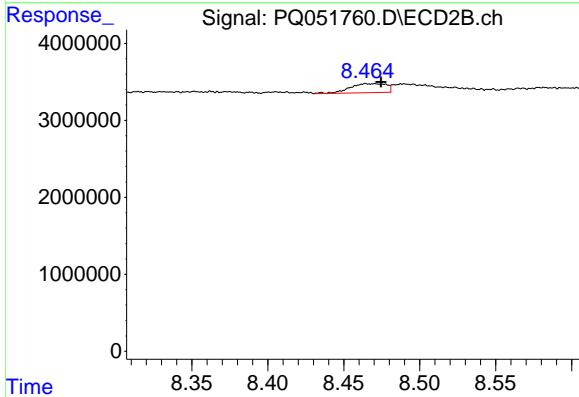
R.T.: 9.041 min
 Delta R.T.: -0.001 min
 Response: 1063242
 Conc: 3.23 ng/ml



#41 AR-1268-1

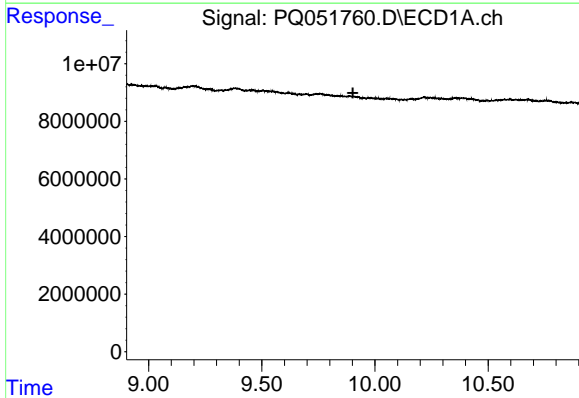
R.T.: 0.000 min
 Exp R.T.: 9.798 min
 Response: 0
 Conc: N.D.

Instrument :
 ECD_O
 ClientSampleId :
 HEXANE



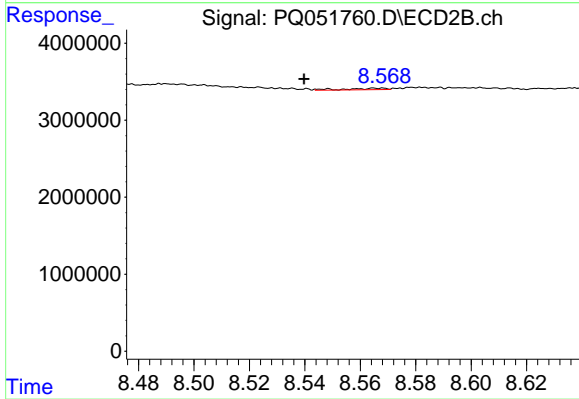
#41 AR-1268-1

R.T.: 8.464 min
 Delta R.T.: -0.010 min
 Response: 1924837
 Conc: 1.66 ng/ml



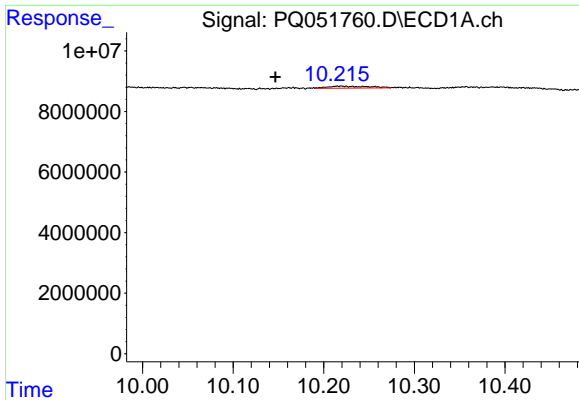
#42 AR-1268-2

R.T.: 0.000 min
 Exp R.T.: 9.902 min
 Response: 0
 Conc: N.D.



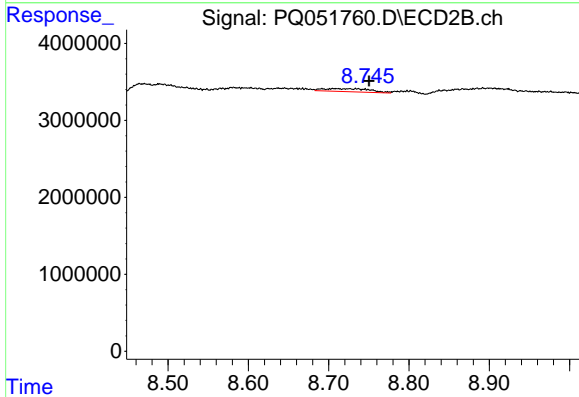
#42 AR-1268-2

R.T.: 8.566 min
 Delta R.T.: 0.026 min
 Response: 187448
 Conc: 0.18 ng/ml

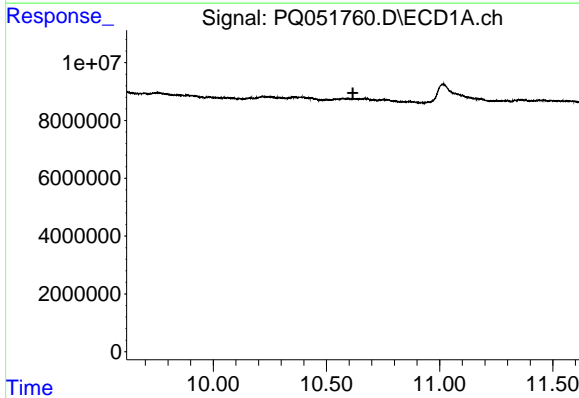


#43 AR-1268-3
 R.T.: 10.215 min
 Delta R.T.: 0.068 min
 Response: 2033952
 Conc: 0.80 ng/ml

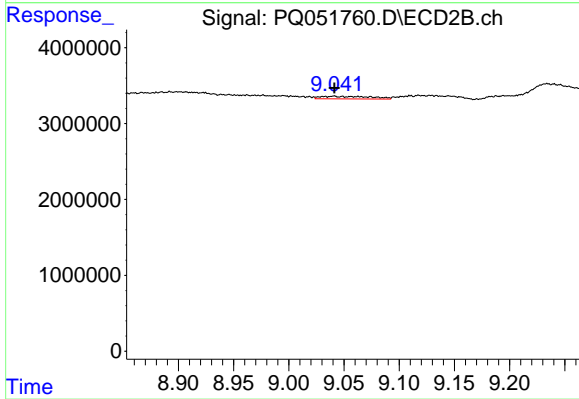
Instrument :
 ECD_O
 ClientSampleId :
 HEXANE



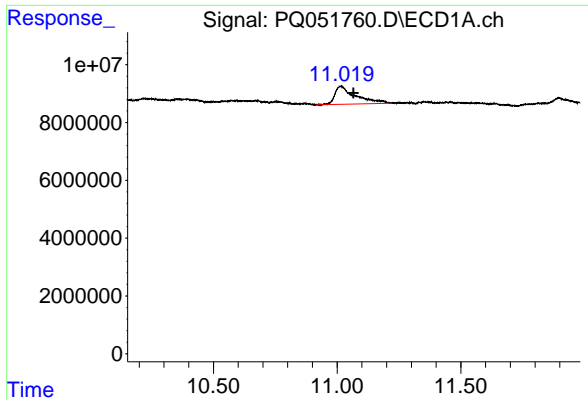
#43 AR-1268-3
 R.T.: 8.734 min
 Delta R.T.: -0.016 min
 Response: 1563382
 Conc: 1.75 ng/ml



#44 AR-1268-4
 R.T.: 0.000 min
 Exp R.T. : 10.617 min
 Response: 0
 Conc: N.D.



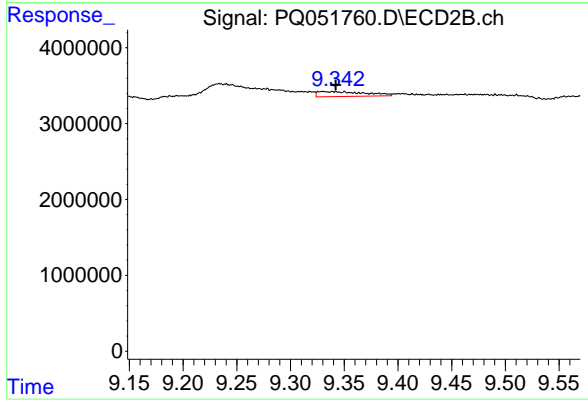
#44 AR-1268-4
 R.T.: 9.041 min
 Delta R.T.: 0.000 min
 Response: 1063242
 Conc: 2.88 ng/ml



#45 AR-1268-5

R.T.: 11.016 min
Delta R.T.: -0.049 min
Response: 36361662
Conc: 4.35 ng/ml

Instrument :
ECD_O
ClientSampleId :
HEXANE



#45 AR-1268-5

R.T.: 9.330 min
Delta R.T.: -0.012 min
Response: 1995233
Conc: 0.72 ng/ml