

Data Path : Z:\pestpcbsrv\HPCHEM1\ECD\_Q\Data\PQ011721\  
 Data File : PQ051765.D  
 Signal(s) : Signal #1: ECD1A.ch Signal #2: ECD2B.ch  
 Acq On : 16 Jan 2021 00:52  
 Operator : DD\AJ  
 Sample : AR1254CCC400  
 Misc :  
 ALS Vial : 6 Sample Multiplier: 1

Instrument :  
 ECD\_O  
 ClientSampled :

Integration File signal 1: autoint1.e  
 Integration File signal 2: autoint2.e  
 Quant Time: Jan 16 04:59:32 2021  
 Quant Method : Z:\pestpcbsrv\HPCHEM1\ECD\_Q\Method\PQ122120CLP.M  
 Quant Title : GC EXTRACTABLES  
 QLast Update : Tue Dec 22 06:18:29 2020  
 Response via : Initial Calibration  
 Integrator: ChemStation

Volume Inj. : 1 µl  
 Signal #1 Phase : ZB MR1 Signal #2 Phase: ZB MR2  
 Signal #1 Info : 30Mx0.32mmx 0.5µm Signal #2 Info : 30M x 0.32mm x 0.25µm

Compound	RT#1	RT#2	Resp#1	Resp#2	ng/ml	ng/ml
System Monitoring Compounds						
1) SA Tetrachlo...	5.234	4.253	612.4E6	186.9E6	23.752	25.592
2) SA Decachlor...	11.427	9.600	704.7E6	244.1E6	38.435	40.129
Target Compounds						
3) L1 AR-1016-1	6.556	5.512	8221936	3021439	9.731	11.786
4) L1 AR-1016-2	6.584	5.532	11998752	2530259	9.687	7.068 #
5) L1 AR-1016-3	6.648	5.726	6646612	1542243	9.082	8.378
6) L1 AR-1016-4	6.755	5.775	5847421	69733771	9.514	483.237 #
7) L1 AR-1016-5	7.069	6.005	138.8E6	25875987	233.341	135.999 #
8) L2 AR-1221-1	0.000	4.504	0	959893	N.D.	12.454 #
9) L2 AR-1221-2	5.589	4.610	8248331	2807286	45.159	52.493
10) L2 AR-1221-3	5.671	4.700	3174338	1314419	5.143	7.176 #
11) L3 AR-1232-1	5.671	4.700	3174338	1314419	6.896	9.615 #
12) L3 AR-1232-2	6.262	5.532	6355006	2530259	25.749	17.992 #
13) L3 AR-1232-3	6.584	5.726	11998752	1542243	23.710	21.552
14) L3 AR-1232-4	6.755	5.819	5847421	19835771	23.415	322.648 #
15) L3 AR-1232-5	6.850	6.005	219.0E6	25875987	1234.215	403.369 #
16) L4 AR-1242-1	6.556	5.512	8221936	3021439	11.701	14.371
17) L4 AR-1242-2	6.584	5.532	11998752	2530259	11.644	8.671 #
18) L4 AR-1242-3	6.648	5.726	6646612	1542243	10.810	10.221
19) L4 AR-1242-4	6.755	5.819	5847421	19835771	11.377	137.019 #
20) L4 AR-1242-5	7.540	6.386	115.7E6	183.1E6	209.820	958.366 #
21) L5 AR-1248-1	6.556	5.512	8221936	3021439	14.533	17.980
22) L5 AR-1248-2	6.850	5.775	219.0E6	69733771	272.173	307.901
23) L5 AR-1248-3	7.069	5.819	138.8E6	19835771	149.760	84.353 #
24) L5 AR-1248-4	7.497	6.005	191.8E6	25875987	180.753	94.131 #
25) L5 AR-1248-5	7.540	6.429	115.7E6	20933344	111.475	72.547 #
26) L6 AR-1254-1	7.467	6.386	403.9E6	183.1E6	410.648	431.487
27) L6 AR-1254-2	7.695	6.544	610.4E6	154.0E6	400.890	419.460
28) L6 AR-1254-3	8.078	6.966	668.6E6	258.3E6	404.639	423.238
29) L6 AR-1254-4	8.373	7.204	462.4E6	154.4E6	388.916	408.924
30) L6 AR-1254-5	8.801	7.634	555.6E6	214.4E6	440.179	408.129
31) L7 AR-1260-1	8.244	7.104	245.9E6	112.6E6	237.427	317.302 #
32) L7 AR-1260-2	8.507	7.298	272.1E6	95550267	220.038	215.974
33) L7 AR-1260-3	8.866	7.453	58689491	96492321	64.629	232.858 #
34) L7 AR-1260-4	9.110	7.938	180.2E6	9306649	169.040	26.836 #
35) L7 AR-1260-5	9.462	8.182	73250827	21931469	32.895	25.401
36) L8 AR-1262-1	8.866	7.634	58689491	214.4E6	38.679	747.698 #
37) L8 AR-1262-2	9.462	8.182	73250827	21931469	26.108	21.510
38) L8 AR-1262-3	9.822	8.468	49536361	843738	41.276	2.242 #
39) L8 AR-1262-4	9.875	8.532	11503393	21051329	16.328	28.709 #
40) L8 AR-1262-5	10.613	9.037	3196008	2026978	3.358	6.157 #
41) L9 AR-1268-1	9.822	8.468	49536361	843738	15.012	0.727 #

Data Path : Z:\pestpcbsrv\HPCHEM1\ECD\_Q\Data\PQ011721\  
 Data File : PQ051765.D  
 Signal(s) : Signal #1: ECD1A.ch Signal #2: ECD2B.ch  
 Acq On : 16 Jan 2021 00:52  
 Operator : DD\AJ  
 Sample : AR1254CCC400  
 Misc :  
 ALS Vial : 6 Sample Multiplier: 1

Instrument :  
 ECD\_O  
 ClientSampleId :

Integration File signal 1: autoint1.e  
 Integration File signal 2: autoint2.e  
 Quant Time: Jan 16 04:59:32 2021  
 Quant Method : Z:\pestpcbsrv\HPCHEM1\ECD\_Q\Method\PQ122120CLP.M  
 Quant Title : GC EXTRACTABLES  
 QLast Update : Tue Dec 22 06:18:29 2020  
 Response via : Initial Calibration  
 Integrator: ChemStation

Volume Inj. : 1 µl  
 Signal #1 Phase : ZB MR1 Signal #2 Phase: ZB MR2  
 Signal #1 Info : 30Mx0.32mmx 0.5µm Signal #2 Info : 30M x 0.32mm x 0.25µm

	Compound	RT#1	RT#2	Resp#1	Resp#2	ng/ml	ng/ml
42)	L9 AR-1268-2	9.875	8.532	11503393	21051329	3.831	19.784 #
43)	L9 AR-1268-3	0.000	8.745	0	916157	N.D.	1.028 #
44)	L9 AR-1268-4	10.613	9.037	3196008	2026978	2.943	5.495 #
45)	L9 AR-1268-5	11.063	9.337	6236203	1947211	0.746	0.699

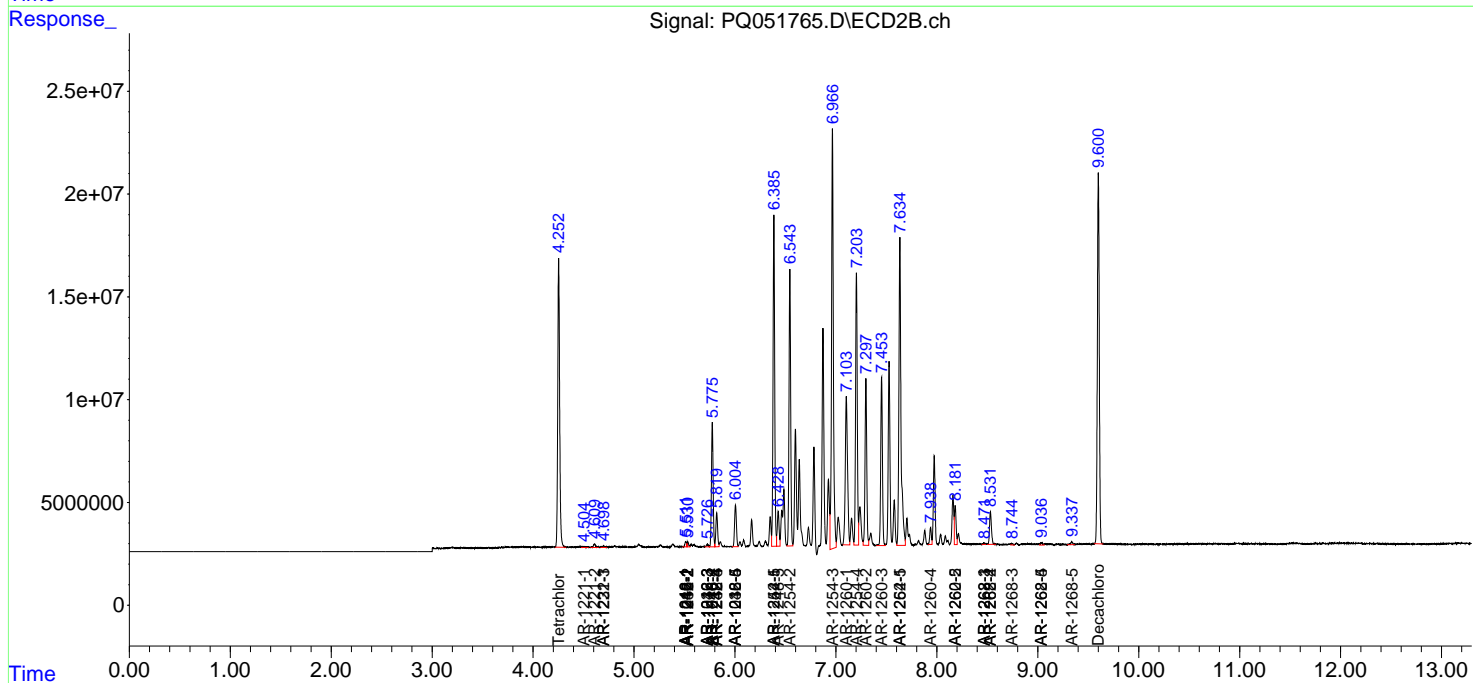
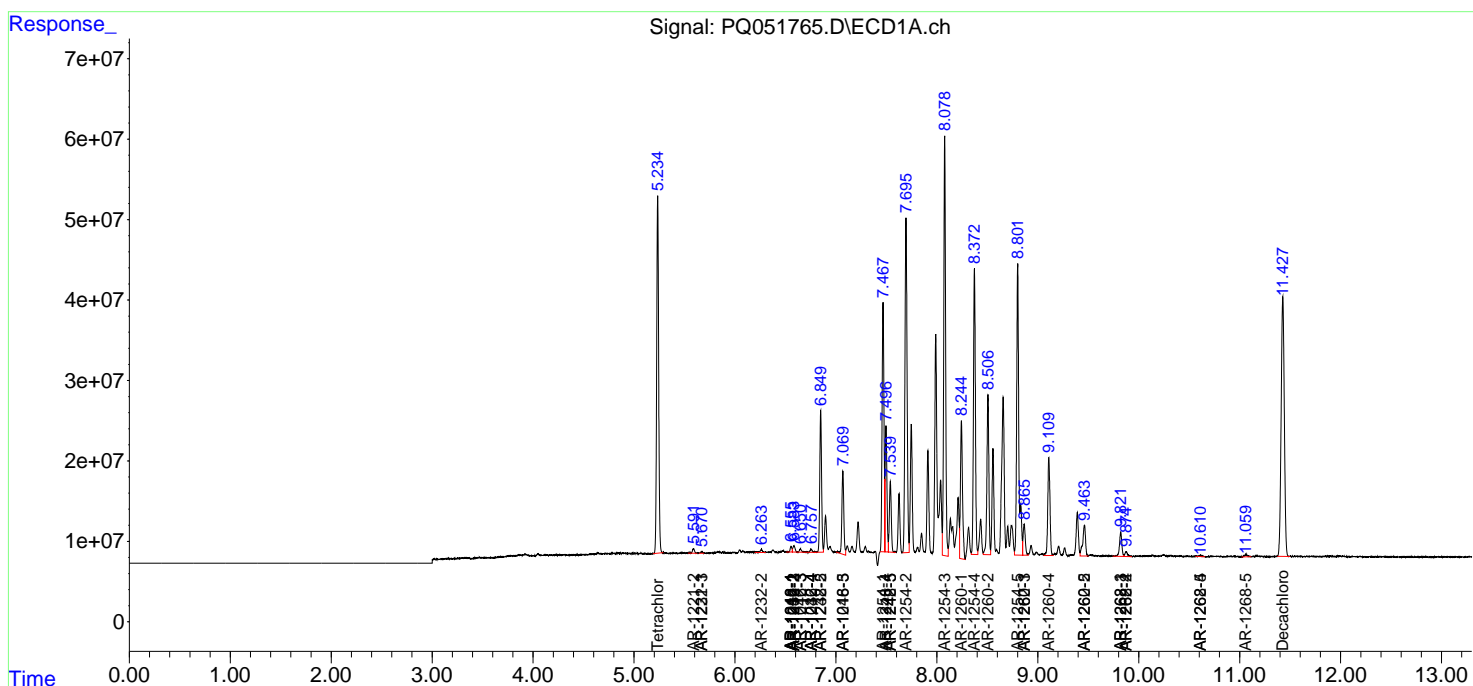
(f)=RT Delta > 1/2 Window (#)=Amounts differ by > 25% (m)=manual int.

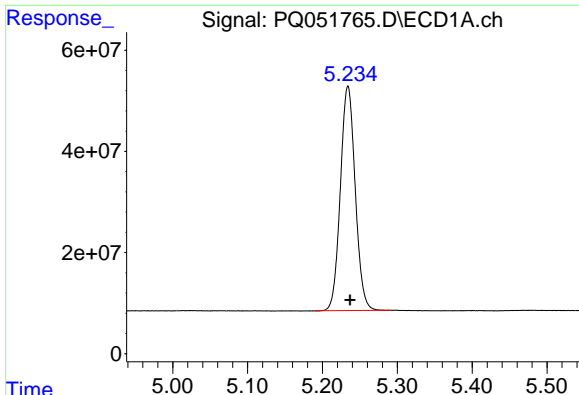
Data Path : Z:\pestpcbsrv\HPCHEM1\ECD\_Q\Data\PQ011721\  
 Data File : PQ051765.D  
 Signal(s) : Signal #1: ECD1A.ch Signal #2: ECD2B.ch  
 Acq On : 16 Jan 2021 00:52  
 Operator : DD\AJ  
 Sample : AR1254CCC400  
 Misc :  
 ALS Vial : 6 Sample Multiplier: 1

Instrument :  
 ECD\_O  
 ClientSampled :

Integration File signal 1: autoint1.e  
 Integration File signal 2: autoint2.e  
 Quant Time: Jan 16 04:59:32 2021  
 Quant Method : Z:\pestpcbsrv\HPCHEM1\ECD\_Q\Method\PQ122120CLP.M  
 Quant Title : GC EXTRACTABLES  
 QLast Update : Tue Dec 22 06:18:29 2020  
 Response via : Initial Calibration  
 Integrator: ChemStation

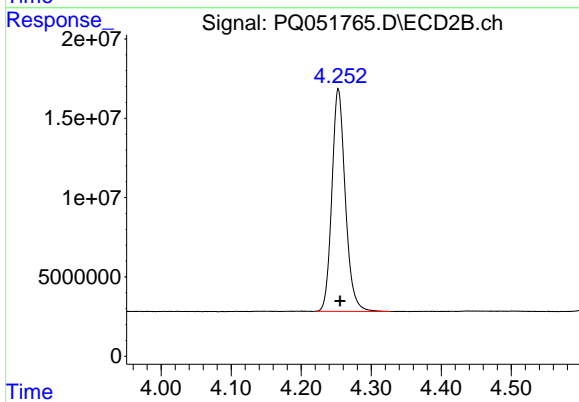
Volume Inj. : 1 µl  
 Signal #1 Phase : ZB MR1 Signal #2 Phase: ZB MR2  
 Signal #1 Info : 30Mx0.32mmx 0.5µm Signal #2 Info : 30M x 0.32mm x 0.25µm



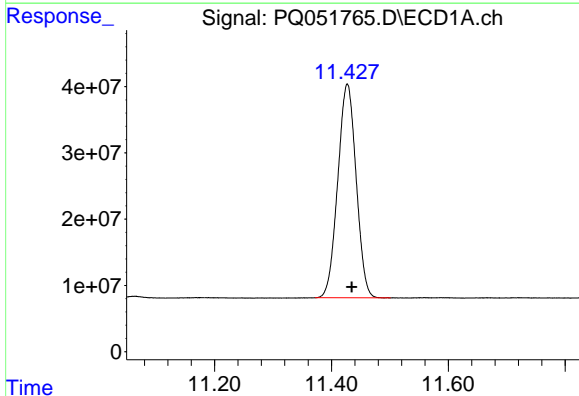


#1 Tetrachloro-m-xylene  
 R.T.: 5.234 min  
 Delta R.T.: -0.003 min  
 Response: 612447067  
 Conc: 23.75 ng/ml

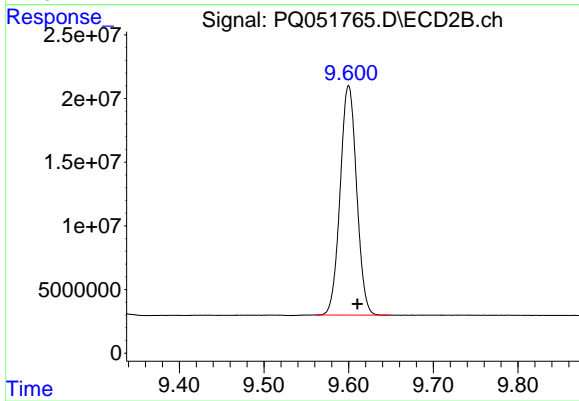
Instrument :  
 ECD\_O  
 ClientSampleId :



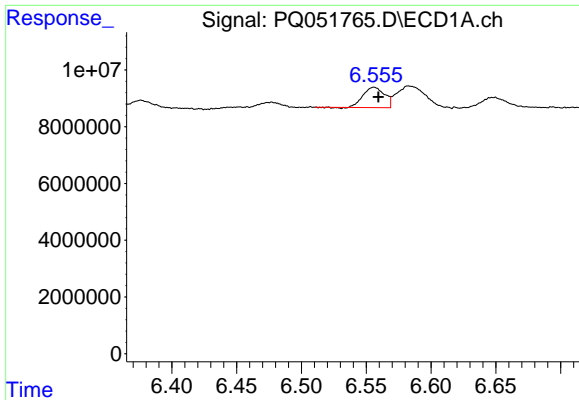
#1 Tetrachloro-m-xylene  
 R.T.: 4.253 min  
 Delta R.T.: -0.002 min  
 Response: 186899775  
 Conc: 25.59 ng/ml



#2 Decachlorobiphenyl  
 R.T.: 11.427 min  
 Delta R.T.: -0.007 min  
 Response: 704695043  
 Conc: 38.44 ng/ml



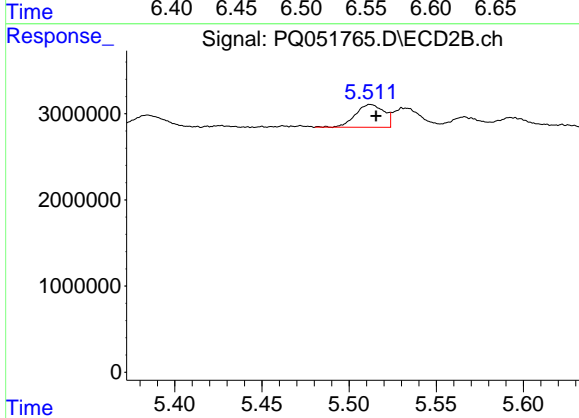
#2 Decachlorobiphenyl  
 R.T.: 9.600 min  
 Delta R.T.: -0.010 min  
 Response: 244054848  
 Conc: 40.13 ng/ml



#3 AR-1016-1

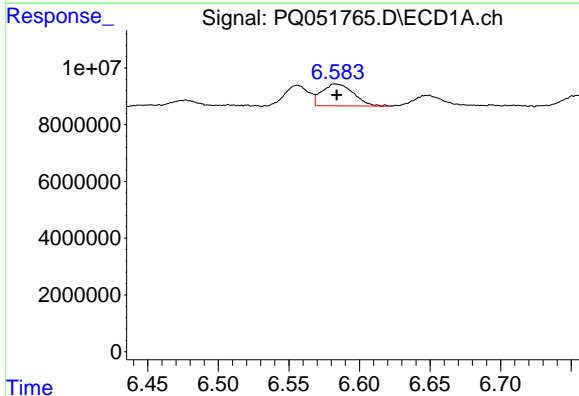
R.T.: 6.556 min  
 Delta R.T.: -0.003 min  
 Response: 8221936  
 Conc: 9.73 ng/ml

Instrument :  
 ECD\_O  
 ClientSampleId :



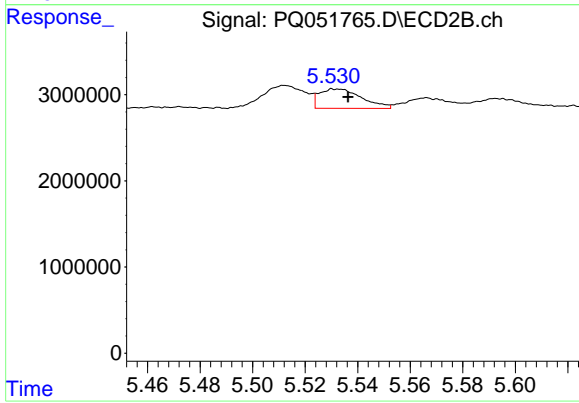
#3 AR-1016-1

R.T.: 5.512 min  
 Delta R.T.: -0.003 min  
 Response: 3021439  
 Conc: 11.79 ng/ml



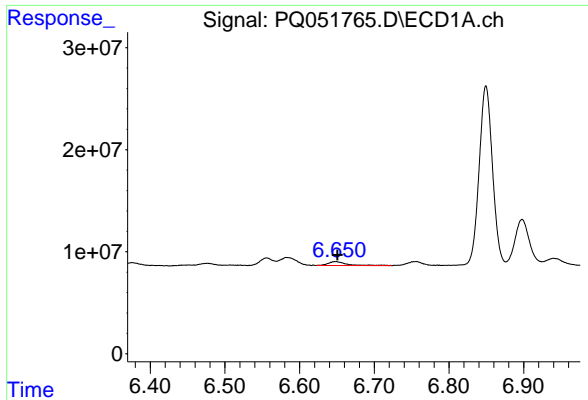
#4 AR-1016-2

R.T.: 6.584 min  
 Delta R.T.: 0.000 min  
 Response: 11998752  
 Conc: 9.69 ng/ml



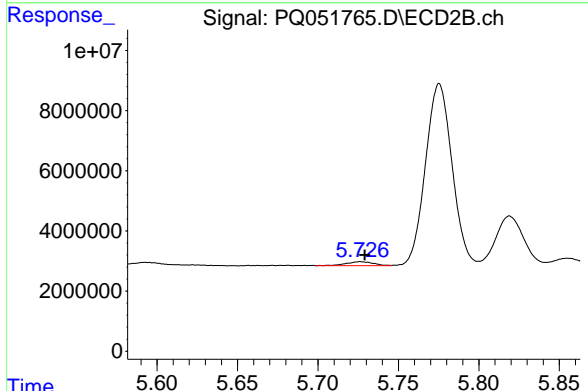
#4 AR-1016-2

R.T.: 5.532 min  
 Delta R.T.: -0.004 min  
 Response: 2530259  
 Conc: 7.07 ng/ml

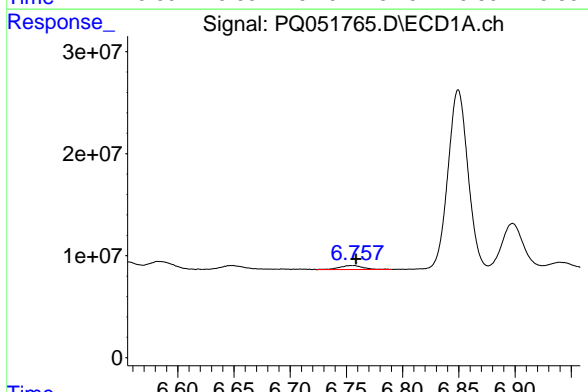


#5 AR-1016-3  
 R.T.: 6.648 min  
 Delta R.T.: -0.002 min  
 Response: 6646612  
 Conc: 9.08 ng/ml

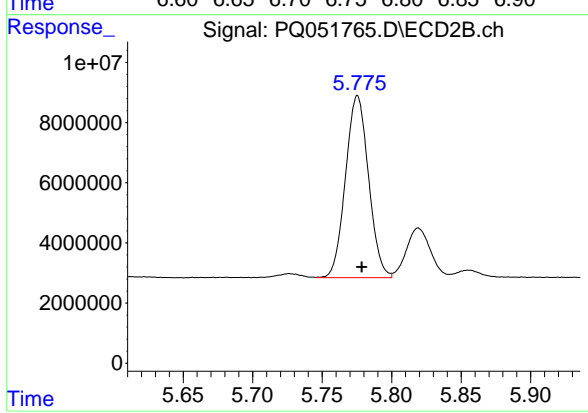
Instrument :  
 ECD\_O  
 ClientSampled :



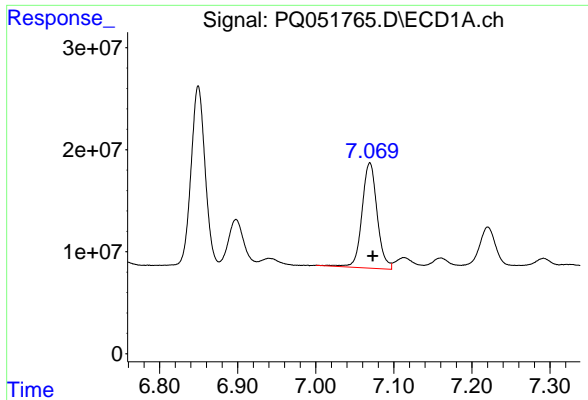
#5 AR-1016-3  
 R.T.: 5.726 min  
 Delta R.T.: -0.003 min  
 Response: 1542243  
 Conc: 8.38 ng/ml



#6 AR-1016-4  
 R.T.: 6.755 min  
 Delta R.T.: -0.004 min  
 Response: 5847421  
 Conc: 9.51 ng/ml



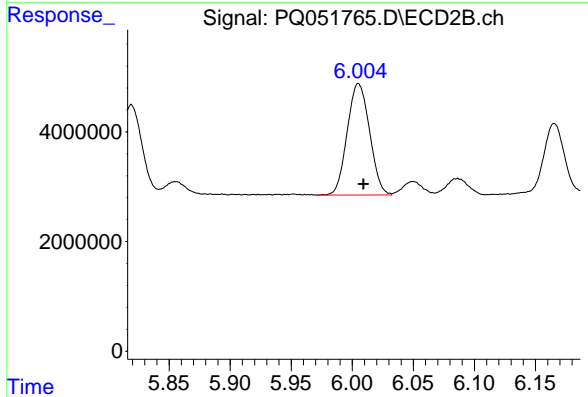
#6 AR-1016-4  
 R.T.: 5.775 min  
 Delta R.T.: -0.003 min  
 Response: 69733771  
 Conc: 483.24 ng/ml



#7 AR-1016-5

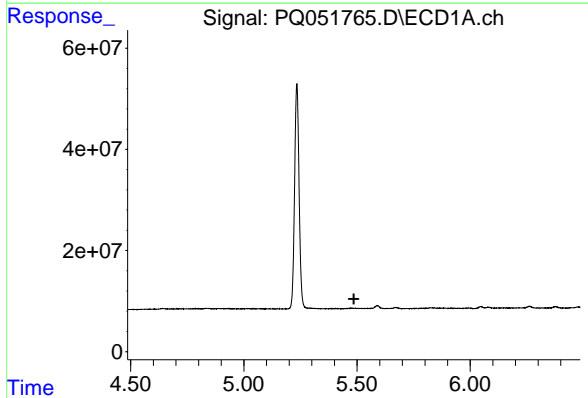
R.T.: 7.069 min  
 Delta R.T.: -0.004 min  
 Response: 138837396  
 Conc: 233.34 ng/ml

Instrument :  
 ECD\_O  
 ClientSampleId :



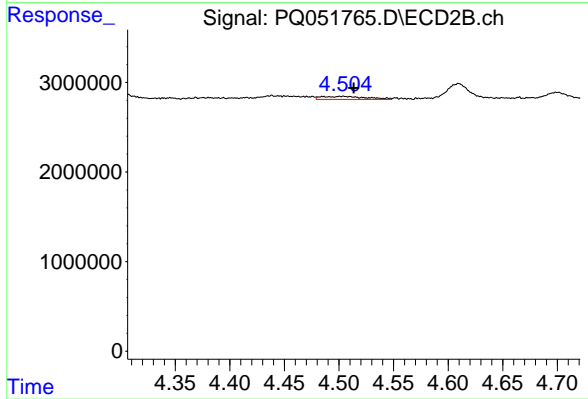
#7 AR-1016-5

R.T.: 6.005 min  
 Delta R.T.: -0.004 min  
 Response: 25875987  
 Conc: 136.00 ng/ml



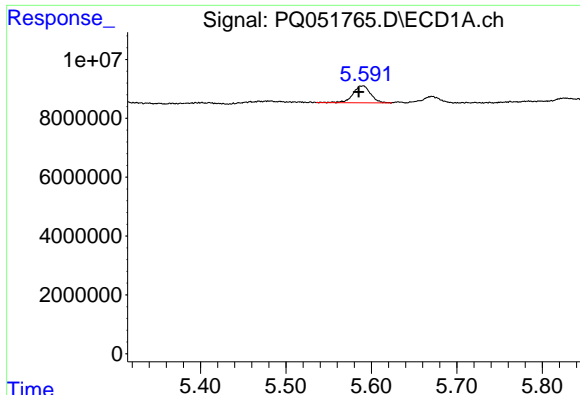
#8 AR-1221-1

R.T.: 0.000 min  
 Exp R.T. : 5.486 min  
 Response: 0  
 Conc: N.D.



#8 AR-1221-1

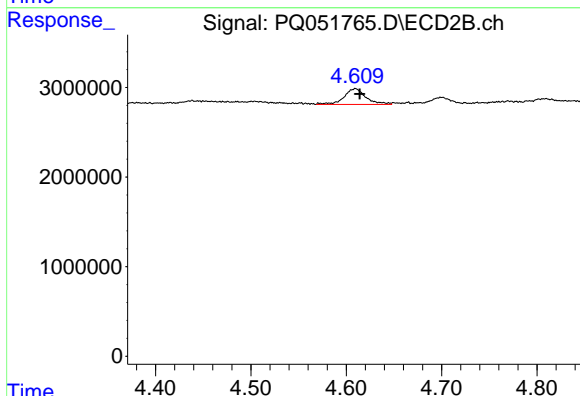
R.T.: 4.504 min  
 Delta R.T.: -0.009 min  
 Response: 959893  
 Conc: 12.45 ng/ml



#9 AR-1221-2

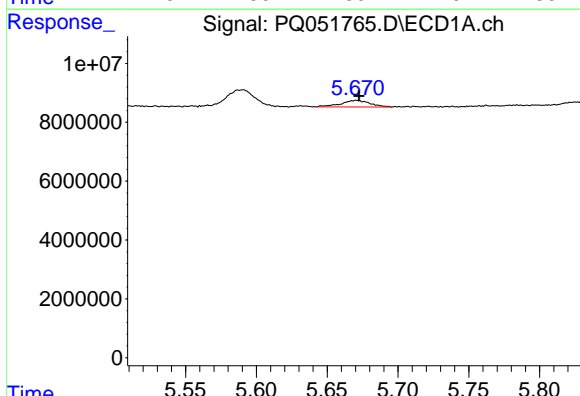
R.T.: 5.589 min  
 Delta R.T.: 0.004 min  
 Response: 8248331  
 Conc: 45.16 ng/ml

Instrument :  
 ECD\_O  
 ClientSampleId :



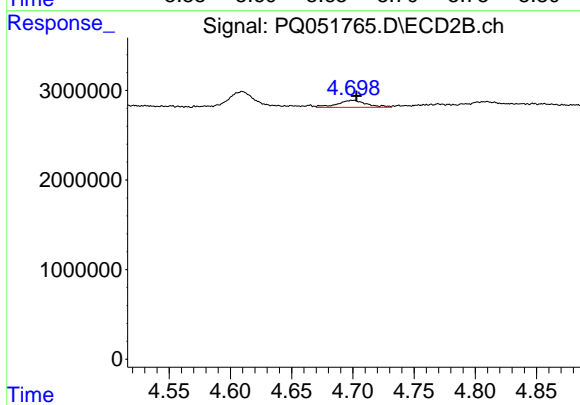
#9 AR-1221-2

R.T.: 4.610 min  
 Delta R.T.: -0.004 min  
 Response: 2807286  
 Conc: 52.49 ng/ml



#10 AR-1221-3

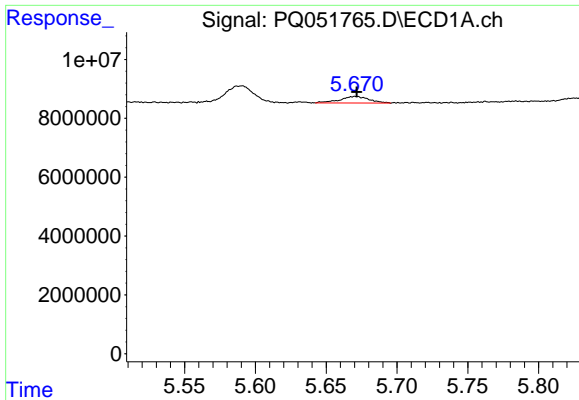
R.T.: 5.671 min  
 Delta R.T.: -0.002 min  
 Response: 3174338  
 Conc: 5.14 ng/ml



#10 AR-1221-3

R.T.: 4.700 min  
 Delta R.T.: -0.003 min  
 Response: 1314419  
 Conc: 7.18 ng/ml

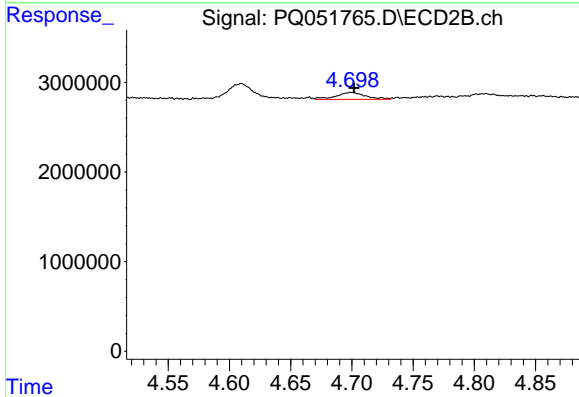




#11 AR-1232-1

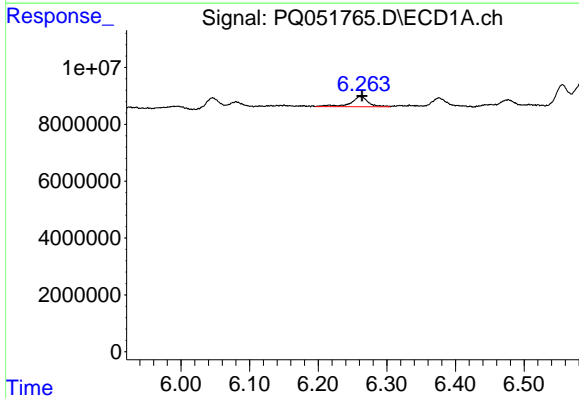
R.T.: 5.671 min  
 Delta R.T.: -0.001 min  
 Response: 3174338  
 Conc: 6.90 ng/ml

Instrument :  
 ECD\_O  
 ClientSampled :



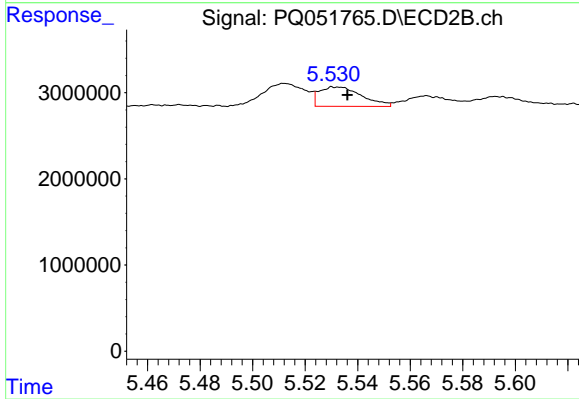
#11 AR-1232-1

R.T.: 4.700 min  
 Delta R.T.: -0.002 min  
 Response: 1314419  
 Conc: 9.62 ng/ml



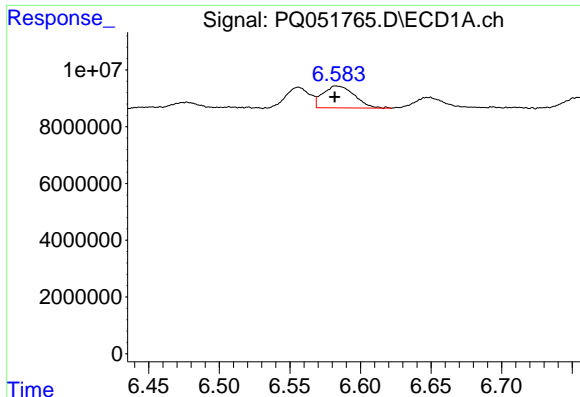
#12 AR-1232-2

R.T.: 6.262 min  
 Delta R.T.: -0.002 min  
 Response: 6355006  
 Conc: 25.75 ng/ml



#12 AR-1232-2

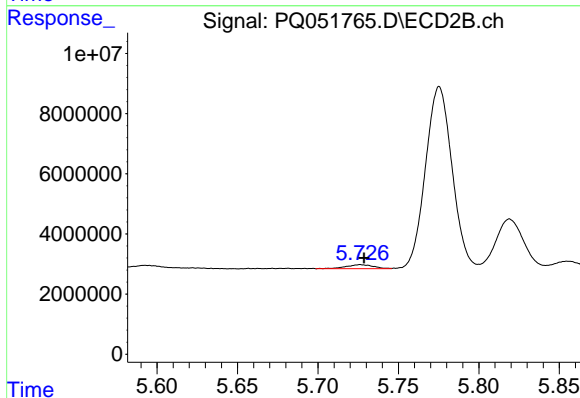
R.T.: 5.532 min  
 Delta R.T.: -0.004 min  
 Response: 2530259  
 Conc: 17.99 ng/ml



#13 AR-1232-3

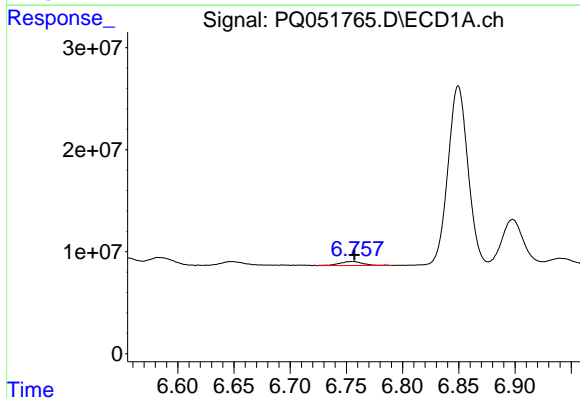
R.T.: 6.584 min  
 Delta R.T.: 0.002 min  
 Response: 11998752  
 Conc: 23.71 ng/ml

Instrument :  
 ECD\_O  
 ClientSampled :



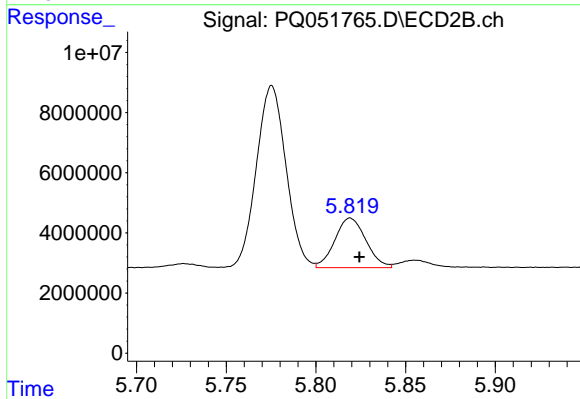
#13 AR-1232-3

R.T.: 5.726 min  
 Delta R.T.: -0.002 min  
 Response: 1542243  
 Conc: 21.55 ng/ml



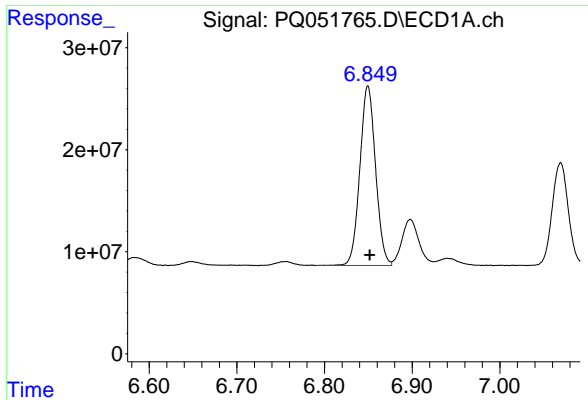
#14 AR-1232-4

R.T.: 6.755 min  
 Delta R.T.: -0.002 min  
 Response: 5847421  
 Conc: 23.41 ng/ml



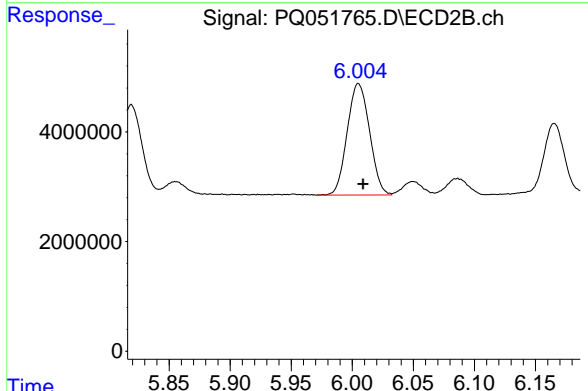
#14 AR-1232-4

R.T.: 5.819 min  
 Delta R.T.: -0.005 min  
 Response: 19835771  
 Conc: 322.65 ng/ml

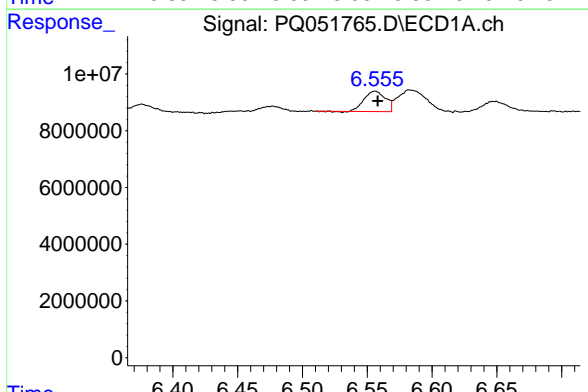


#15 AR-1232-5  
 R.T.: 6.850 min  
 Delta R.T.: -0.002 min  
 Response: 218962889  
 Conc: 1234.21 ng/ml

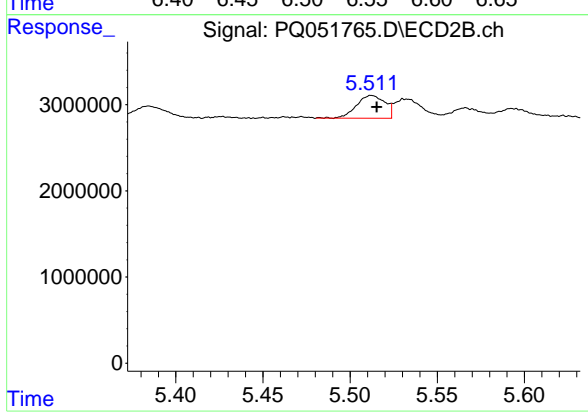
Instrument :  
 ECD\_O  
 ClientSampleId :



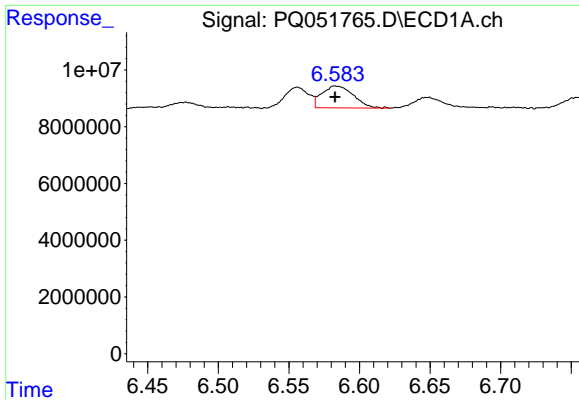
#15 AR-1232-5  
 R.T.: 6.005 min  
 Delta R.T.: -0.004 min  
 Response: 25875987  
 Conc: 403.37 ng/ml



#16 AR-1242-1  
 R.T.: 6.556 min  
 Delta R.T.: -0.002 min  
 Response: 8221936  
 Conc: 11.70 ng/ml



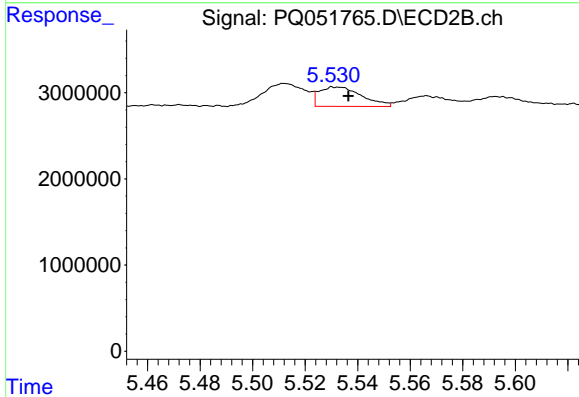
#16 AR-1242-1  
 R.T.: 5.512 min  
 Delta R.T.: -0.003 min  
 Response: 3021439  
 Conc: 14.37 ng/ml



#17 AR-1242-2

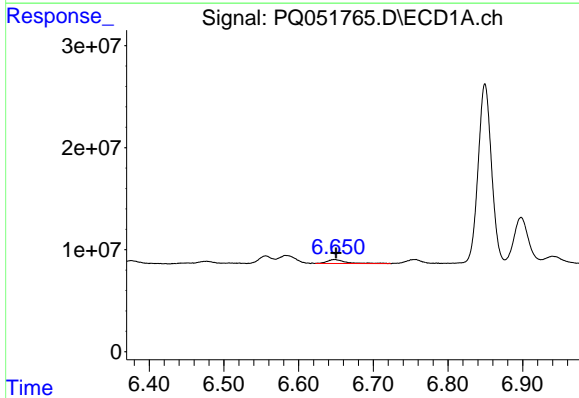
R.T.: 6.584 min  
 Delta R.T.: 0.001 min  
 Response: 11998752  
 Conc: 11.64 ng/ml

Instrument :  
 ECD\_O  
 ClientSampleId :



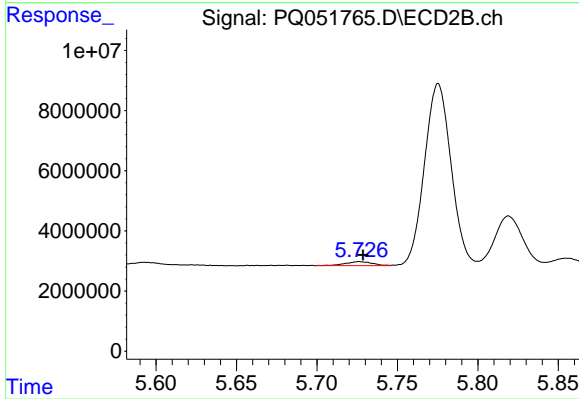
#17 AR-1242-2

R.T.: 5.532 min  
 Delta R.T.: -0.004 min  
 Response: 2530259  
 Conc: 8.67 ng/ml



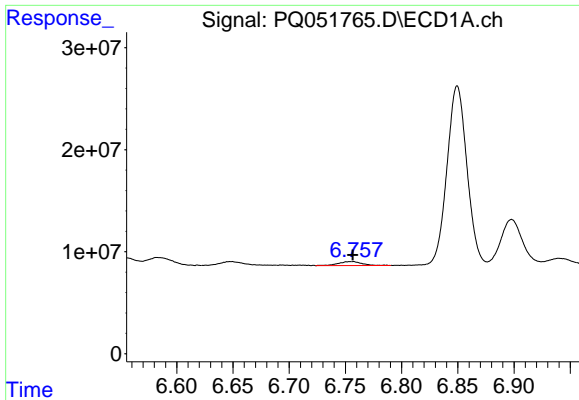
#18 AR-1242-3

R.T.: 6.648 min  
 Delta R.T.: -0.002 min  
 Response: 6646612  
 Conc: 10.81 ng/ml



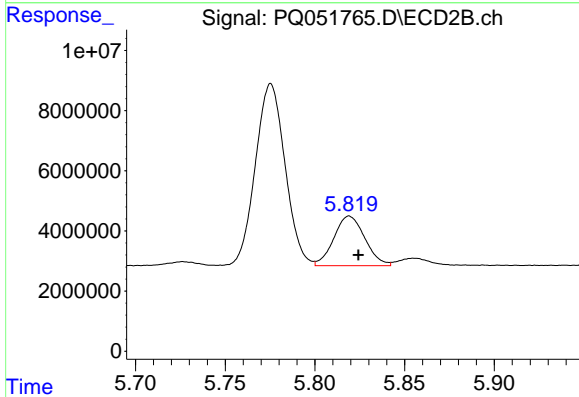
#18 AR-1242-3

R.T.: 5.726 min  
 Delta R.T.: -0.002 min  
 Response: 1542243  
 Conc: 10.22 ng/ml

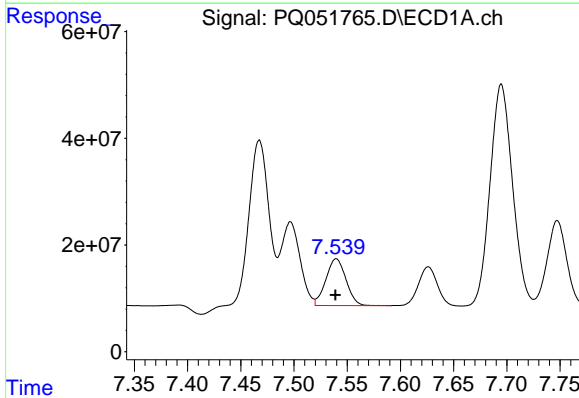


#19 AR-1242-4  
 R.T.: 6.755 min  
 Delta R.T.: -0.002 min  
 Response: 5847421  
 Conc: 11.38 ng/ml

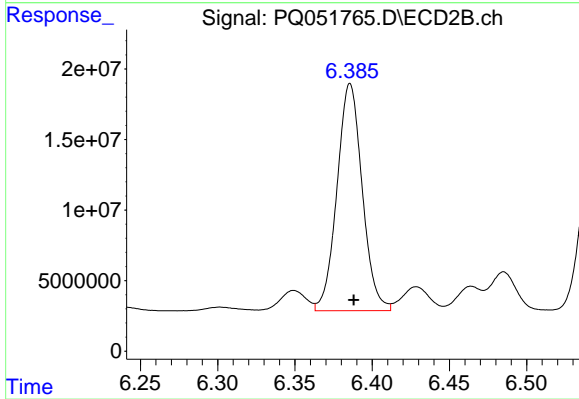
Instrument :  
 ECD\_O  
 ClientSampleId :



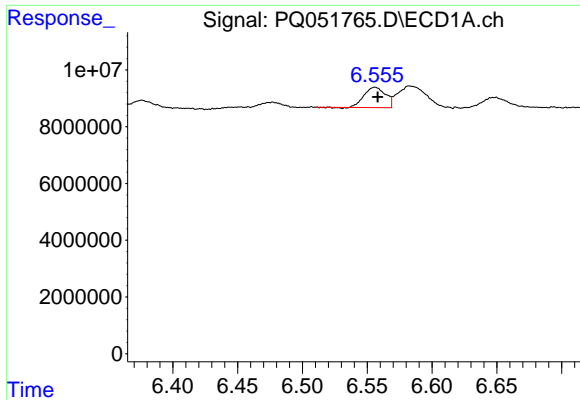
#19 AR-1242-4  
 R.T.: 5.819 min  
 Delta R.T.: -0.005 min  
 Response: 19835771  
 Conc: 137.02 ng/ml



#20 AR-1242-5  
 R.T.: 7.540 min  
 Delta R.T.: 0.000 min  
 Response: 115671454  
 Conc: 209.82 ng/ml

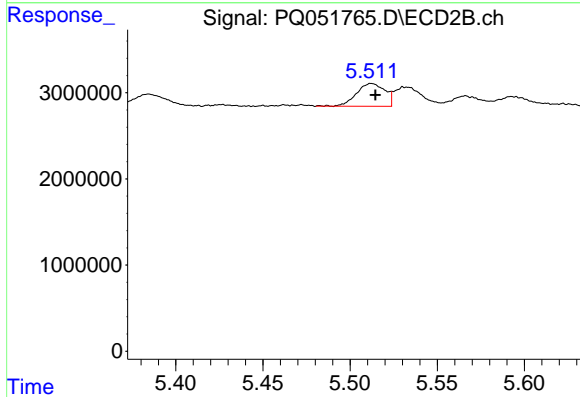


#20 AR-1242-5  
 R.T.: 6.386 min  
 Delta R.T.: -0.002 min  
 Response: 183119642  
 Conc: 958.37 ng/ml

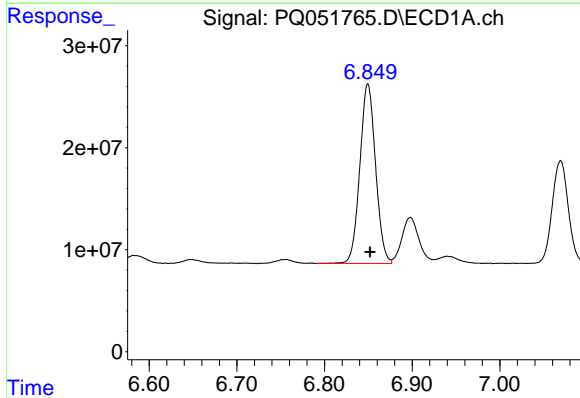


#21 AR-1248-1  
 R.T.: 6.556 min  
 Delta R.T.: -0.002 min  
 Response: 8221936  
 Conc: 14.53 ng/ml

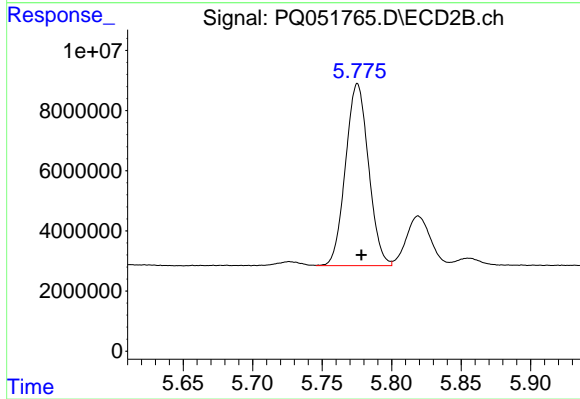
Instrument :  
 ECD\_O  
 ClientSampleId :



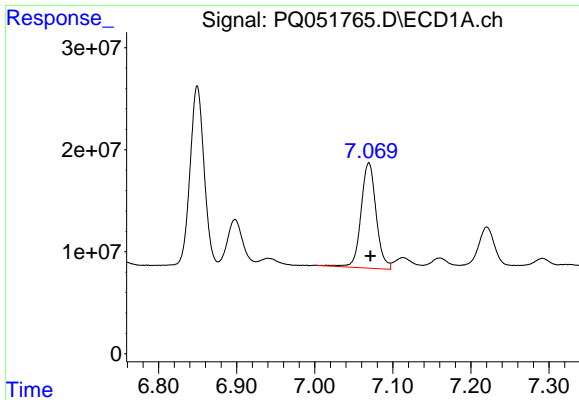
#21 AR-1248-1  
 R.T.: 5.512 min  
 Delta R.T.: -0.002 min  
 Response: 3021439  
 Conc: 17.98 ng/ml



#22 AR-1248-2  
 R.T.: 6.850 min  
 Delta R.T.: -0.002 min  
 Response: 218962889  
 Conc: 272.17 ng/ml

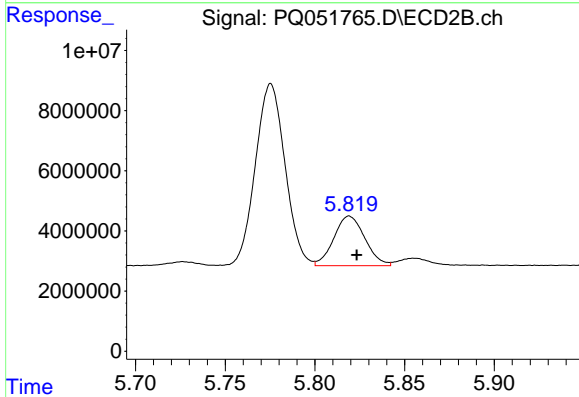


#22 AR-1248-2  
 R.T.: 5.775 min  
 Delta R.T.: -0.003 min  
 Response: 69733771  
 Conc: 307.90 ng/ml

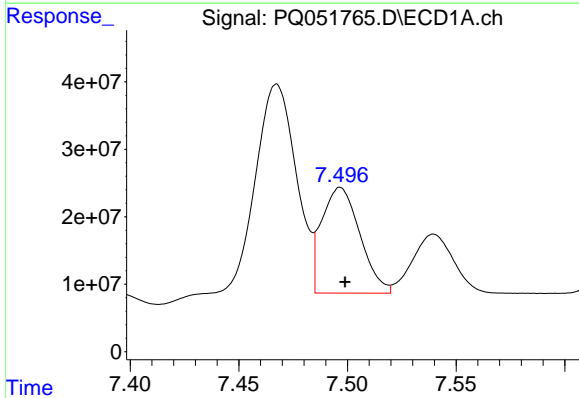


#23 AR-1248-3  
 R.T.: 7.069 min  
 Delta R.T.: -0.002 min  
 Response: 138837396  
 Conc: 149.76 ng/ml

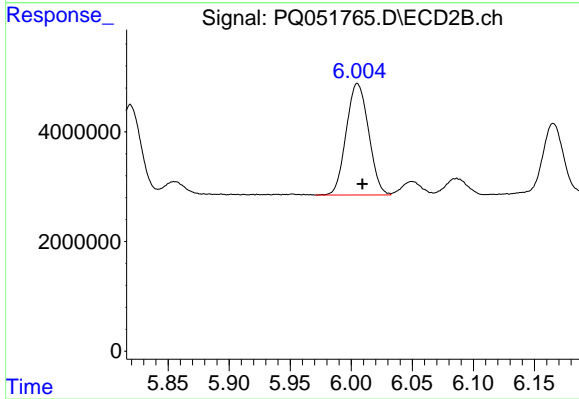
Instrument :  
 ECD\_O  
 ClientSampleId :



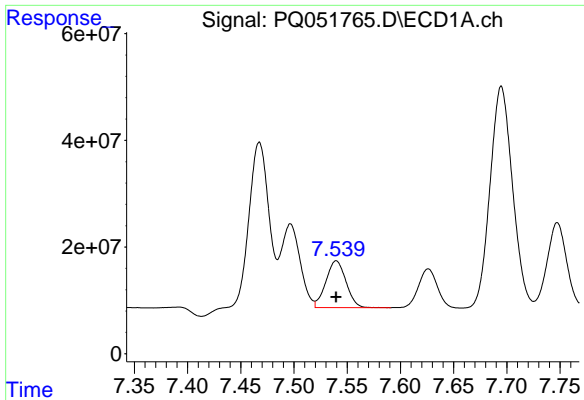
#23 AR-1248-3  
 R.T.: 5.819 min  
 Delta R.T.: -0.004 min  
 Response: 19835771  
 Conc: 84.35 ng/ml



#24 AR-1248-4  
 R.T.: 7.497 min  
 Delta R.T.: -0.002 min  
 Response: 191796561  
 Conc: 180.75 ng/ml



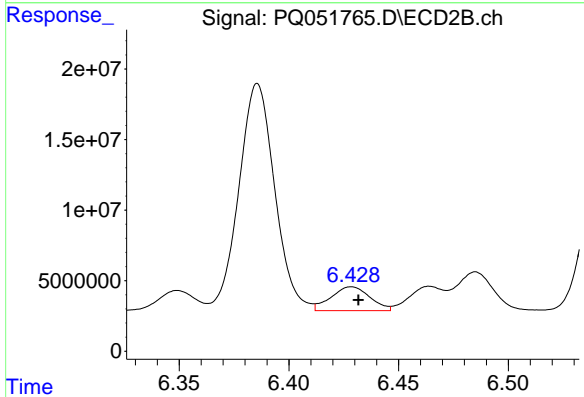
#24 AR-1248-4  
 R.T.: 6.005 min  
 Delta R.T.: -0.004 min  
 Response: 25875987  
 Conc: 94.13 ng/ml



#25 AR-1248-5

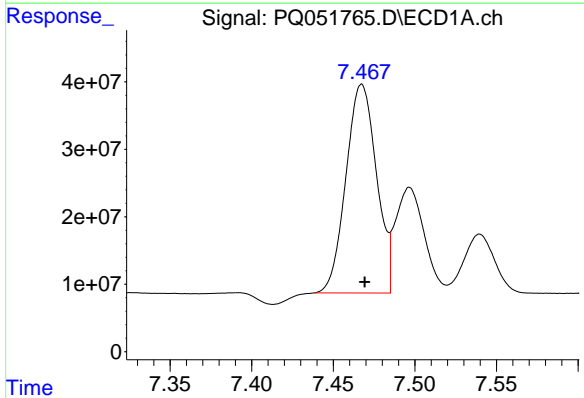
R.T.: 7.540 min  
 Delta R.T.: 0.000 min  
 Response: 115671454  
 Conc: 111.47 ng/ml

Instrument :  
 ECD\_O  
 ClientSampleId :



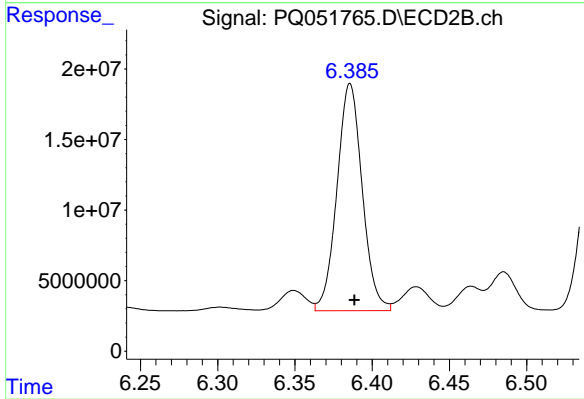
#25 AR-1248-5

R.T.: 6.429 min  
 Delta R.T.: -0.003 min  
 Response: 20933344  
 Conc: 72.55 ng/ml



#26 AR-1254-1

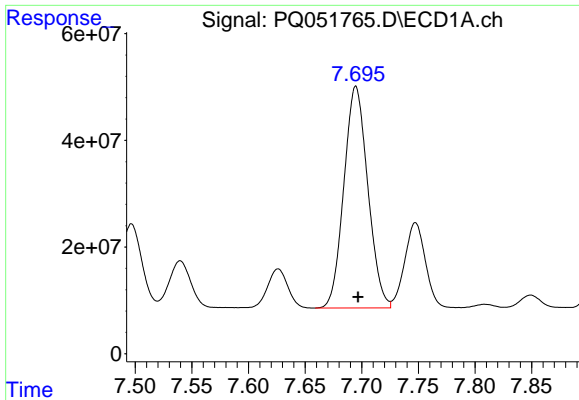
R.T.: 7.467 min  
 Delta R.T.: -0.002 min  
 Response: 403855630  
 Conc: 410.65 ng/ml



#26 AR-1254-1

R.T.: 6.386 min  
 Delta R.T.: -0.003 min  
 Response: 183119642  
 Conc: 431.49 ng/ml

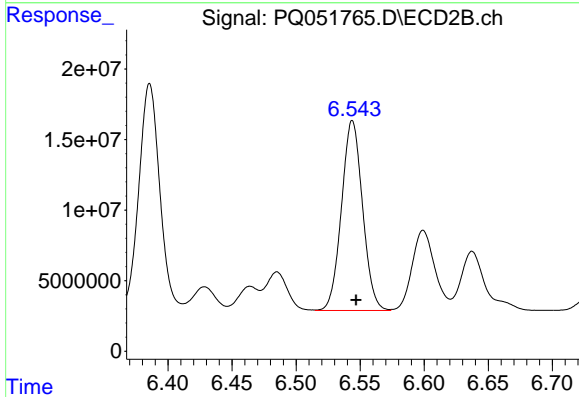




#27 AR-1254-2

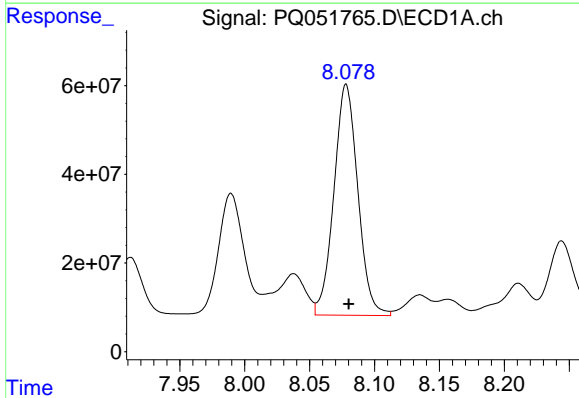
R.T.: 7.695 min  
 Delta R.T.: -0.002 min  
 Response: 610437185  
 Conc: 400.89 ng/ml

Instrument :  
 ECD\_O  
 ClientSampleId :



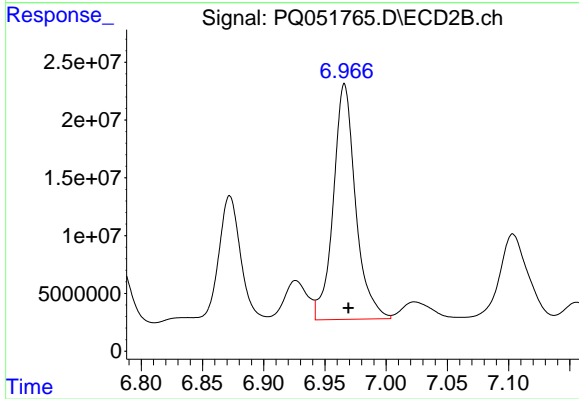
#27 AR-1254-2

R.T.: 6.544 min  
 Delta R.T.: -0.003 min  
 Response: 153967024  
 Conc: 419.46 ng/ml



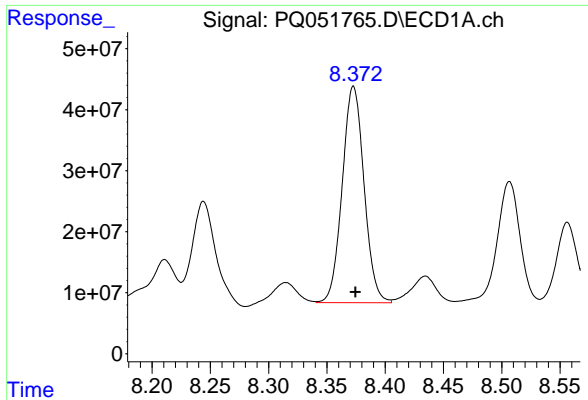
#28 AR-1254-3

R.T.: 8.078 min  
 Delta R.T.: -0.002 min  
 Response: 668571641  
 Conc: 404.64 ng/ml



#28 AR-1254-3

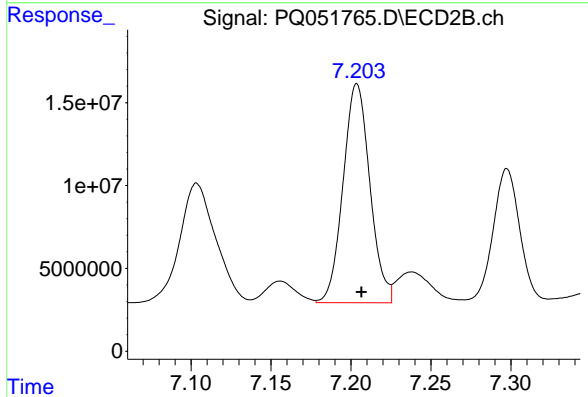
R.T.: 6.966 min  
 Delta R.T.: -0.003 min  
 Response: 258268889  
 Conc: 423.24 ng/ml



#29 AR-1254-4

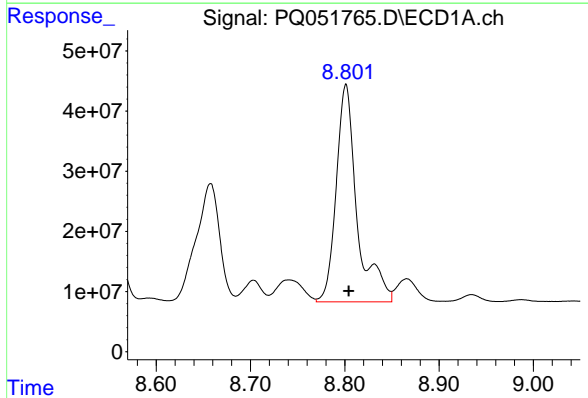
R.T.: 8.373 min  
 Delta R.T.: -0.002 min  
 Response: 462427616  
 Conc: 388.92 ng/ml

Instrument :  
 ECD\_O  
 ClientSampleId :



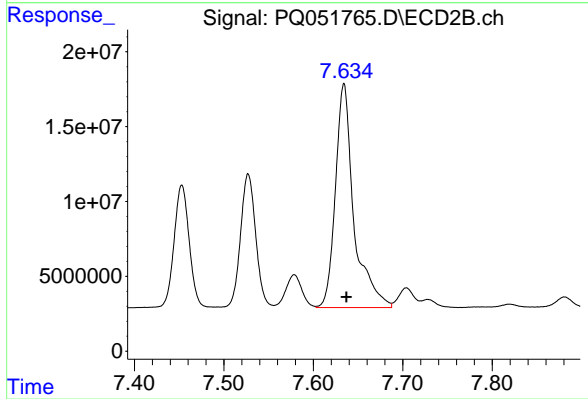
#29 AR-1254-4

R.T.: 7.204 min  
 Delta R.T.: -0.003 min  
 Response: 154437648  
 Conc: 408.92 ng/ml



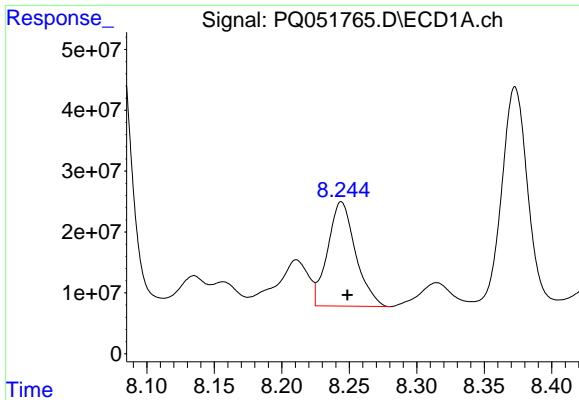
#30 AR-1254-5

R.T.: 8.801 min  
 Delta R.T.: -0.003 min  
 Response: 555561266  
 Conc: 440.18 ng/ml



#30 AR-1254-5

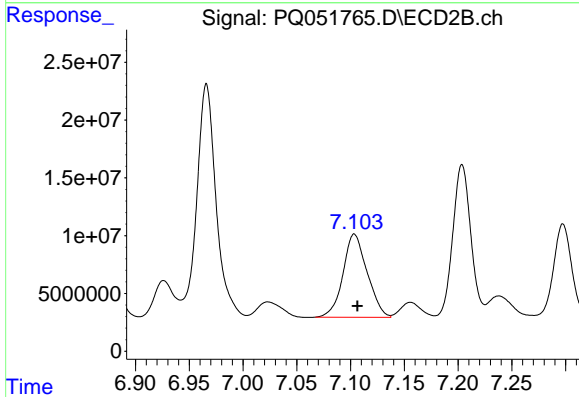
R.T.: 7.634 min  
 Delta R.T.: -0.003 min  
 Response: 214358742  
 Conc: 408.13 ng/ml



#31 AR-1260-1

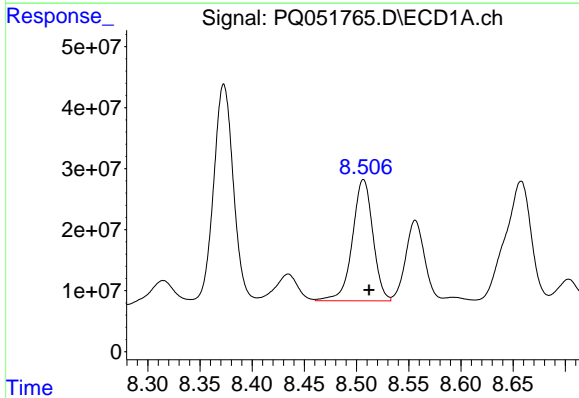
R.T.: 8.244 min  
 Delta R.T.: -0.004 min  
 Response: 245914230  
 Conc: 237.43 ng/ml

Instrument :  
 ECD\_O  
 ClientSampleId :



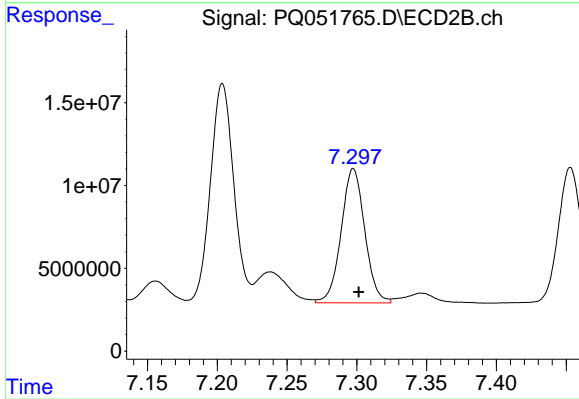
#31 AR-1260-1

R.T.: 7.104 min  
 Delta R.T.: -0.003 min  
 Response: 112558762  
 Conc: 317.30 ng/ml



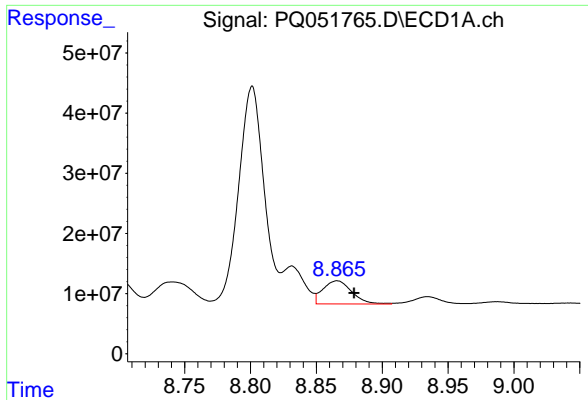
#32 AR-1260-2

R.T.: 8.507 min  
 Delta R.T.: -0.005 min  
 Response: 272103552  
 Conc: 220.04 ng/ml



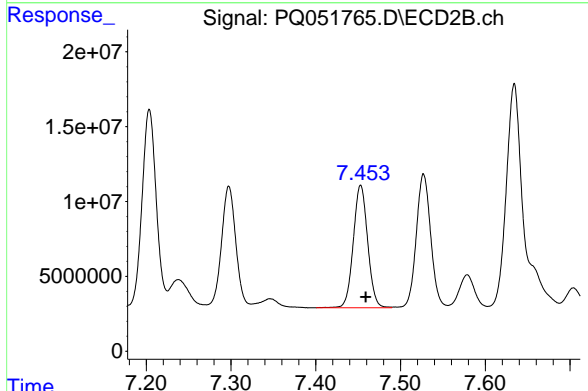
#32 AR-1260-2

R.T.: 7.298 min  
 Delta R.T.: -0.004 min  
 Response: 95550267  
 Conc: 215.97 ng/ml

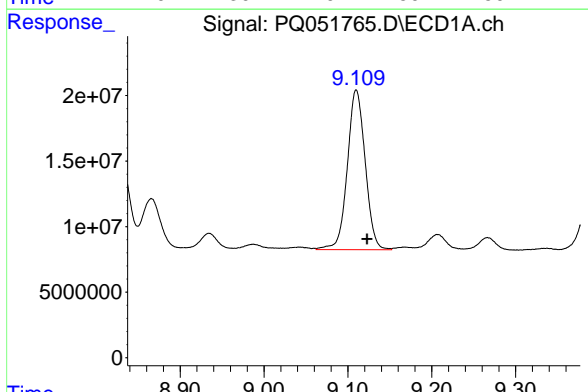


#33 AR-1260-3  
 R.T.: 8.866 min  
 Delta R.T.: -0.013 min  
 Response: 58689491  
 Conc: 64.63 ng/ml

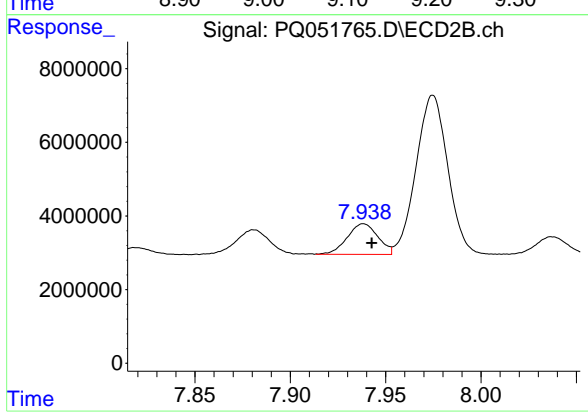
Instrument :  
 ECD\_O  
 ClientSampled :



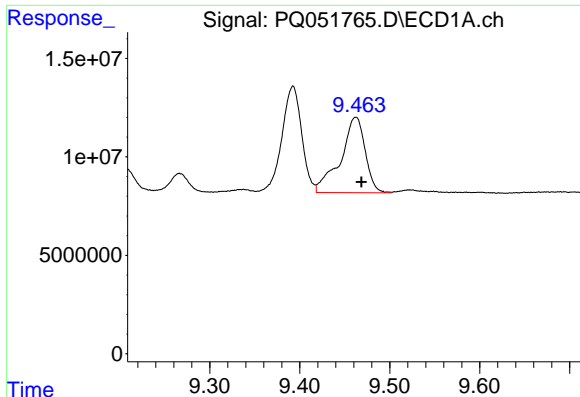
#33 AR-1260-3  
 R.T.: 7.453 min  
 Delta R.T.: -0.006 min  
 Response: 96492321  
 Conc: 232.86 ng/ml



#34 AR-1260-4  
 R.T.: 9.110 min  
 Delta R.T.: -0.013 min  
 Response: 180217408  
 Conc: 169.04 ng/ml



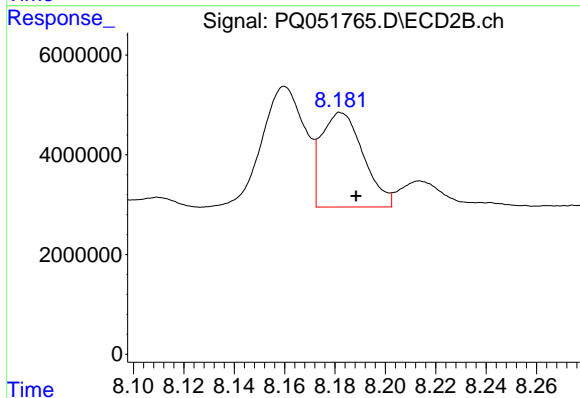
#34 AR-1260-4  
 R.T.: 7.938 min  
 Delta R.T.: -0.004 min  
 Response: 9306649  
 Conc: 26.84 ng/ml



#35 AR-1260-5

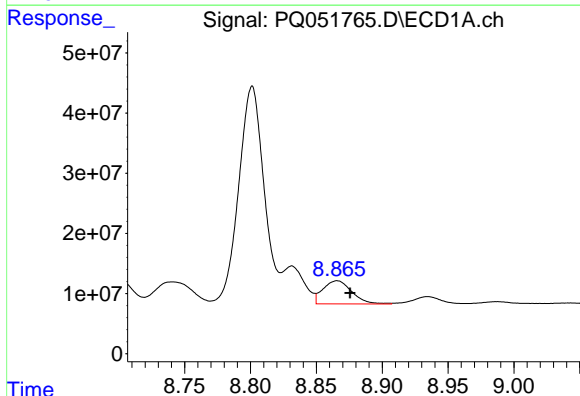
R.T.: 9.462 min  
 Delta R.T.: -0.007 min  
 Response: 73250827  
 Conc: 32.89 ng/ml

Instrument :  
 ECD\_O  
 ClientSampleId :



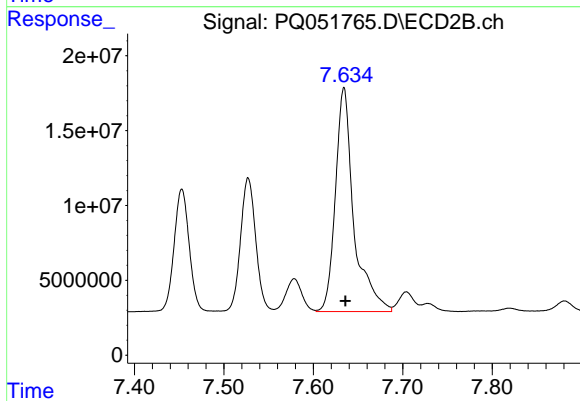
#35 AR-1260-5

R.T.: 8.182 min  
 Delta R.T.: -0.006 min  
 Response: 21931469  
 Conc: 25.40 ng/ml



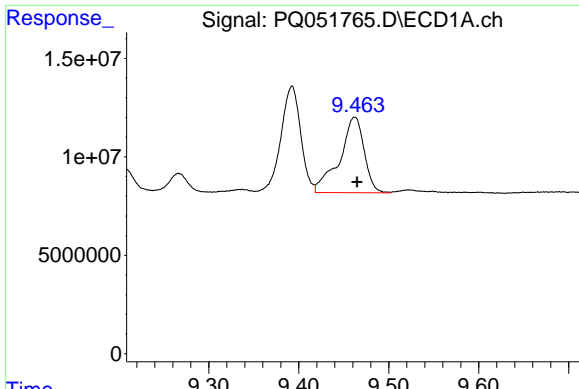
#36 AR-1262-1

R.T.: 8.866 min  
 Delta R.T.: -0.010 min  
 Response: 58689491  
 Conc: 38.68 ng/ml



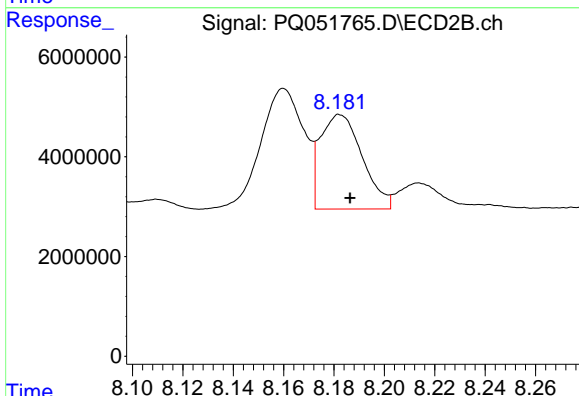
#36 AR-1262-1

R.T.: 7.634 min  
 Delta R.T.: -0.002 min  
 Response: 214358742  
 Conc: 747.70 ng/ml

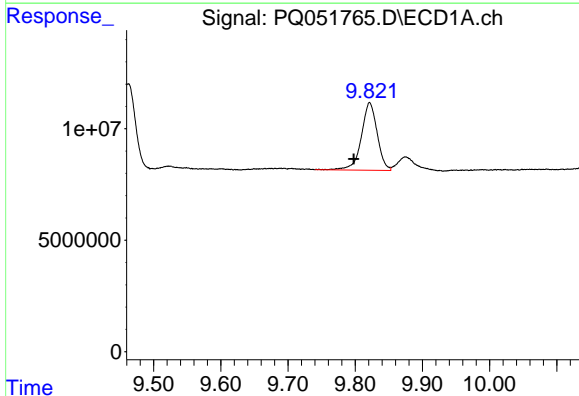


#37 AR-1262-2  
 R.T.: 9.462 min  
 Delta R.T.: -0.003 min  
 Response: 73250827  
 Conc: 26.11 ng/ml

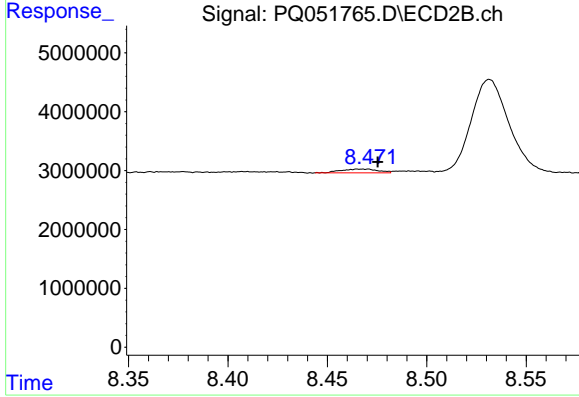
Instrument :  
 ECD\_O  
 ClientSampleId :



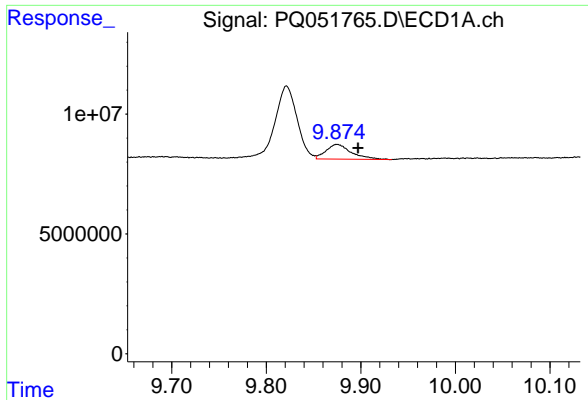
#37 AR-1262-2  
 R.T.: 8.182 min  
 Delta R.T.: -0.004 min  
 Response: 21931469  
 Conc: 21.51 ng/ml



#38 AR-1262-3  
 R.T.: 9.822 min  
 Delta R.T.: 0.024 min  
 Response: 49536361  
 Conc: 41.28 ng/ml

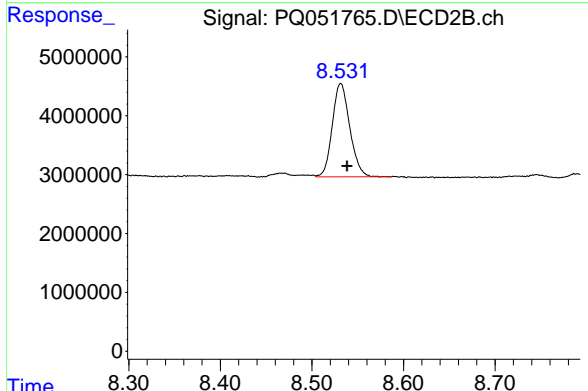


#38 AR-1262-3  
 R.T.: 8.468 min  
 Delta R.T.: -0.008 min  
 Response: 843738  
 Conc: 2.24 ng/ml

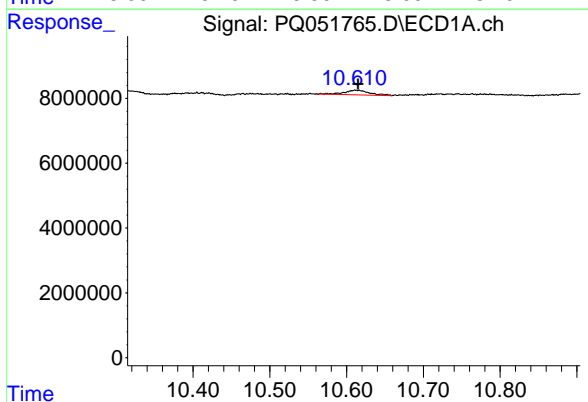


#39 AR-1262-4  
 R.T.: 9.875 min  
 Delta R.T.: -0.022 min  
 Response: 11503393  
 Conc: 16.33 ng/ml

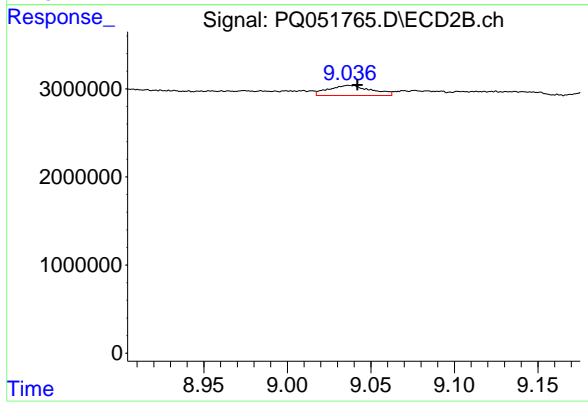
Instrument :  
 ECD\_O  
 ClientSampled :



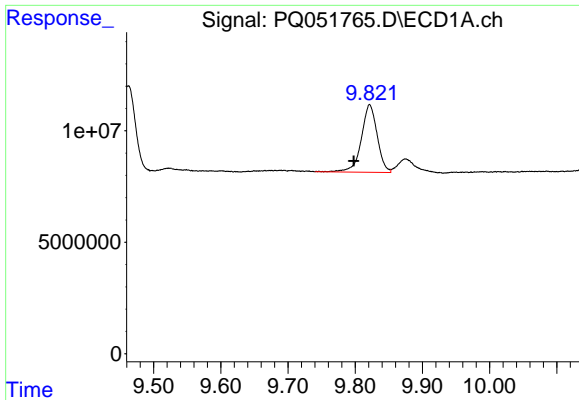
#39 AR-1262-4  
 R.T.: 8.532 min  
 Delta R.T.: -0.007 min  
 Response: 21051329  
 Conc: 28.71 ng/ml



#40 AR-1262-5  
 R.T.: 10.613 min  
 Delta R.T.: -0.002 min  
 Response: 3196008  
 Conc: 3.36 ng/ml



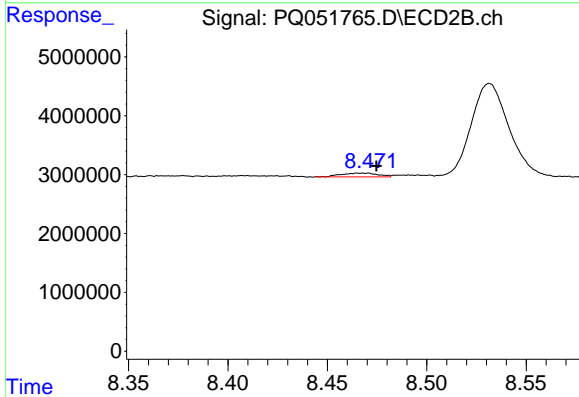
#40 AR-1262-5  
 R.T.: 9.037 min  
 Delta R.T.: -0.005 min  
 Response: 2026978  
 Conc: 6.16 ng/ml



#41 AR-1268-1

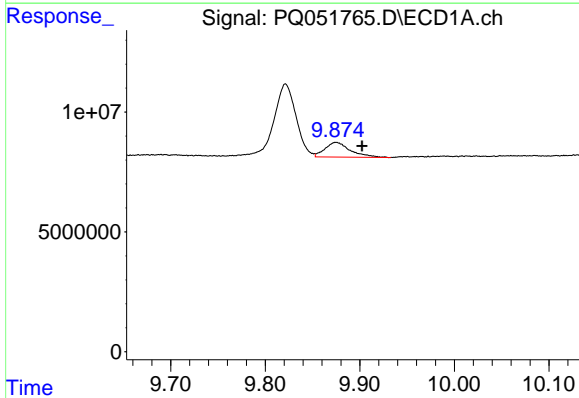
R.T.: 9.822 min  
 Delta R.T.: 0.024 min  
 Response: 49536361  
 Conc: 15.01 ng/ml

Instrument :  
 ECD\_O  
 ClientSampleId :



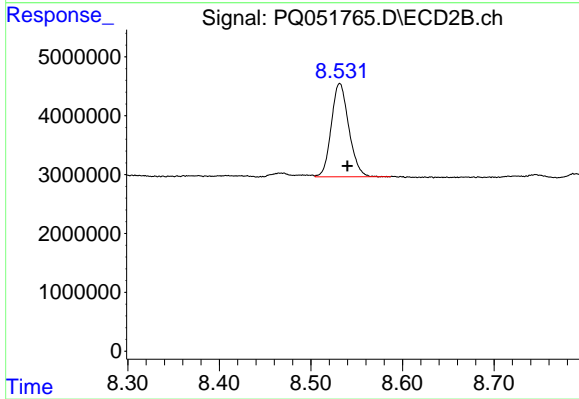
#41 AR-1268-1

R.T.: 8.468 min  
 Delta R.T.: -0.007 min  
 Response: 843738  
 Conc: 0.73 ng/ml



#42 AR-1268-2

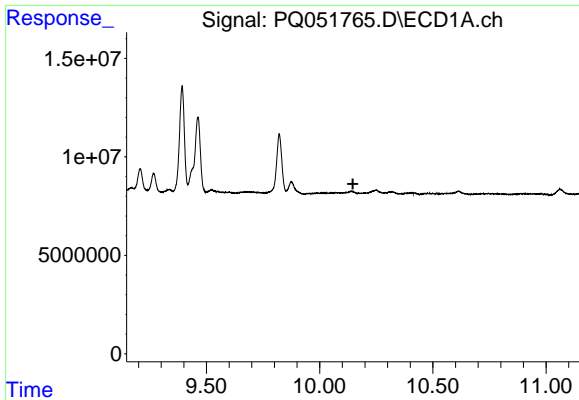
R.T.: 9.875 min  
 Delta R.T.: -0.027 min  
 Response: 11503393  
 Conc: 3.83 ng/ml



#42 AR-1268-2

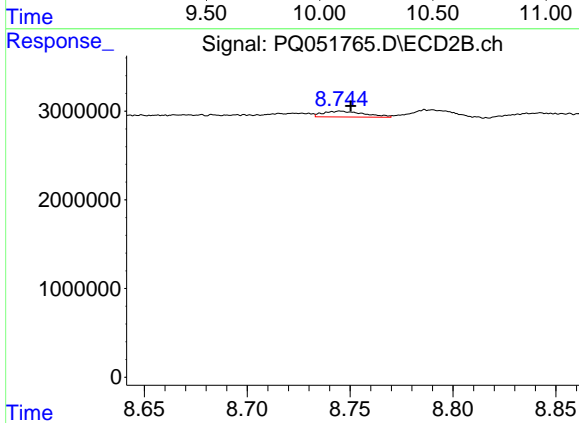
R.T.: 8.532 min  
 Delta R.T.: -0.008 min  
 Response: 21051329  
 Conc: 19.78 ng/ml



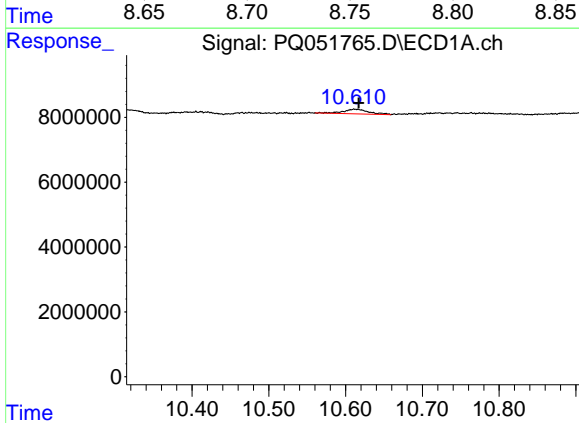


#43 AR-1268-3  
 R.T.: 0.000 min  
 Exp R.T.: 10.147 min  
 Response: 0  
 Conc: N.D.

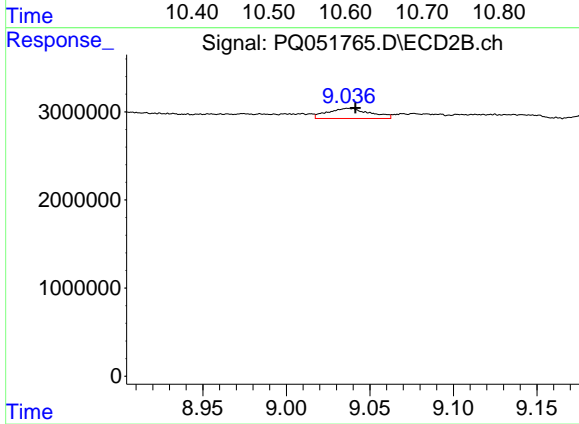
Instrument :  
 ECD\_O  
 ClientSampled :



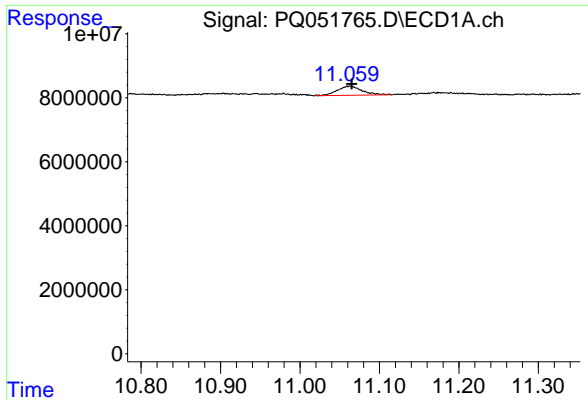
#43 AR-1268-3  
 R.T.: 8.745 min  
 Delta R.T.: -0.005 min  
 Response: 916157  
 Conc: 1.03 ng/ml



#44 AR-1268-4  
 R.T.: 10.613 min  
 Delta R.T.: -0.004 min  
 Response: 3196008  
 Conc: 2.94 ng/ml



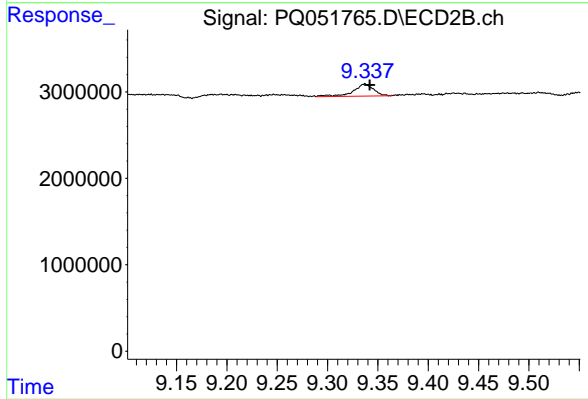
#44 AR-1268-4  
 R.T.: 9.037 min  
 Delta R.T.: -0.004 min  
 Response: 2026978  
 Conc: 5.50 ng/ml



#45 AR-1268-5

R.T.: 11.063 min  
 Delta R.T.: -0.002 min  
 Response: 6236203  
 Conc: 0.75 ng/ml

Instrument :  
 ECD\_O  
 ClientSampleId :



#45 AR-1268-5

R.T.: 9.337 min  
 Delta R.T.: -0.005 min  
 Response: 1947211  
 Conc: 0.70 ng/ml