

Data Path : Z:\pestpcbsrv\HPCHEM1\ECD_Q\Data\PQ011721\
 Data File : PQ051767.D
 Signal(s) : Signal #1: ECD1A.ch Signal #2: ECD2B.ch
 Acq On : 16 Jan 2021 01:41
 Operator : DD\AJ
 Sample : PB134168BL
 Misc :
 ALS Vial : 8 Sample Multiplier: 1

Instrument :
 ECD_O
 ClientSampleId :
 ALCS83

Integration File signal 1: autoint1.e
 Integration File signal 2: autoint2.e
 Quant Time: Jan 16 05:01:10 2021
 Quant Method : Z:\pestpcbsrv\HPCHEM1\ECD_Q\Method\PQ122120CLP.M
 Quant Title : GC EXTRACTABLES
 QLast Update : Tue Dec 22 06:18:29 2020
 Response via : Initial Calibration
 Integrator: ChemStation

Volume Inj. : 1 µl
 Signal #1 Phase : ZB MR1 Signal #2 Phase: ZB MR2
 Signal #1 Info : 30Mx0.32mmx 0.5µm Signal #2 Info : 30M x 0.32mm x 0.25µm

Compound	RT#1	RT#2	Resp#1	Resp#2	ng/ml	ng/ml
System Monitoring Compounds						
1) SA Tetrachlo...	5.234	4.253	549.0E6	166.5E6	21.289	22.802
2) SA Decachlor...	11.425	9.599	721.3E6	248.6E6	39.343	40.869
Target Compounds						
3) L1 AR-1016-1	0.000	5.501	0	53790	N.D.	0.210 #
4) L1 AR-1016-2	0.000	5.542	0	250434	N.D.	0.700 #
5) L1 AR-1016-3	0.000	5.687f	0	32041	N.D.	0.174 #
6) L1 AR-1016-4	0.000	5.792	0	645086	N.D.	4.470 #
7) L1 AR-1016-5	0.000	6.056f	0	673748	N.D.	3.541 #
8) L2 AR-1221-1	5.494	4.501	3392807	693795	12.782	9.001 #
9) L2 AR-1221-2	5.590	4.608	6410920	2965127	35.099	55.445 #
10) L2 AR-1221-3	0.000	4.705	0	183929	N.D.	1.004 #
11) L3 AR-1232-1	0.000	4.705	0	183929	N.D.	1.345 #
12) L3 AR-1232-2	0.000	5.542	0	250434	N.D.	1.781 #
13) L3 AR-1232-3	0.000	5.687f	0	32041	N.D.	0.448 #
14) L3 AR-1232-4	0.000	5.820	0	386936	N.D.	6.294 #
15) L3 AR-1232-5	0.000	6.056f	0	673748	N.D.	10.503 #
16) L4 AR-1242-1	0.000	5.501	0	53790	N.D.	0.256 #
17) L4 AR-1242-2	0.000	5.542	0	250434	N.D.	0.858 #
18) L4 AR-1242-3	0.000	5.687f	0	32041	N.D.	0.212 #
19) L4 AR-1242-4	0.000	5.820	0	386936	N.D.	2.673 #
20) L4 AR-1242-5	0.000	6.407	0	1802247	N.D.	9.432 #
21) L5 AR-1248-1	0.000	5.501	0	53790	N.D.	0.320 #
22) L5 AR-1248-2	0.000	5.792	0	645086	N.D.	2.848 #
23) L5 AR-1248-3	0.000	5.820	0	386936	N.D.	1.645 #
24) L5 AR-1248-4	0.000	6.056f	0	673748	N.D.	2.451 #
25) L5 AR-1248-5	0.000	6.407	0	1802247	N.D.	6.246 #
26) L6 AR-1254-1	0.000	6.407	0	1802247	N.D.	4.247 #
27) L6 AR-1254-2	0.000	6.540	0	1636473	N.D.	4.458 #
28) L6 AR-1254-3	8.103	6.969	4217991	466665	2.553	0.765 #
29) L6 AR-1254-4	0.000	7.204	0	723498	N.D.	1.916 #
30) L6 AR-1254-5	0.000	7.632	0	776252	N.D.	1.478 #
31) L7 AR-1260-1	0.000	7.154f	0	3133598	N.D.	8.834 #
32) L7 AR-1260-2	8.522	7.269	4668513	2605066	3.775	5.888 #
33) L7 AR-1260-3	0.000	7.473	0	388670	N.D.	0.938 #
34) L7 AR-1260-4	0.000	7.920	0	530096	N.D.	1.529 #
35) L7 AR-1260-5	0.000	8.194	0	829399	N.D.	0.961 #
36) L8 AR-1262-1	0.000	7.632	0	776252	N.D.	2.708 #
37) L8 AR-1262-2	0.000	8.194	0	829399	N.D.	0.813 #
38) L8 AR-1262-3	0.000	8.464	0	781119	N.D.	2.076 #
39) L8 AR-1262-4	0.000	8.502f	0	1269435	N.D.	1.731 #
40) L8 AR-1262-5	0.000	9.069	0	966749	N.D.	2.937 #
41) L9 AR-1268-1	0.000	8.464	0	781119	N.D.	0.673 #

Data Path : Z:\pestpcbsrv\HPCHEM1\ECD_Q\Data\PQ011721\
 Data File : PQ051767.D
 Signal(s) : Signal #1: ECD1A.ch Signal #2: ECD2B.ch
 Acq On : 16 Jan 2021 01:41
 Operator : DD\AJ
 Sample : PB134168BL
 Misc :
 ALS Vial : 8 Sample Multiplier: 1

Instrument :
 ECD_O
 ClientSampleId :
 ALCS83

Integration File signal 1: autoint1.e
 Integration File signal 2: autoint2.e
 Quant Time: Jan 16 05:01:10 2021
 Quant Method : Z:\pestpcbsrv\HPCHEM1\ECD_Q\Method\PQ122120CLP.M
 Quant Title : GC EXTRACTABLES
 QLast Update : Tue Dec 22 06:18:29 2020
 Response via : Initial Calibration
 Integrator: ChemStation

Volume Inj. : 1 µl
 Signal #1 Phase : ZB MR1 Signal #2 Phase: ZB MR2
 Signal #1 Info : 30Mx0.32mmx 0.5µm Signal #2 Info : 30M x 0.32mm x 0.25µm

	Compound	RT#1	RT#2	Resp#1	Resp#2	ng/ml	ng/ml
42)	L9 AR-1268-2	0.000	8.502f	0	1269435	N.D.	1.193 #
43)	L9 AR-1268-3	0.000	8.746	0	578452	N.D.	0.649 #
44)	L9 AR-1268-4	0.000	9.069	0	966749	N.D.	2.621 #
45)	L9 AR-1268-5	11.062	9.336	4355278	1987764	0.521	0.714 #

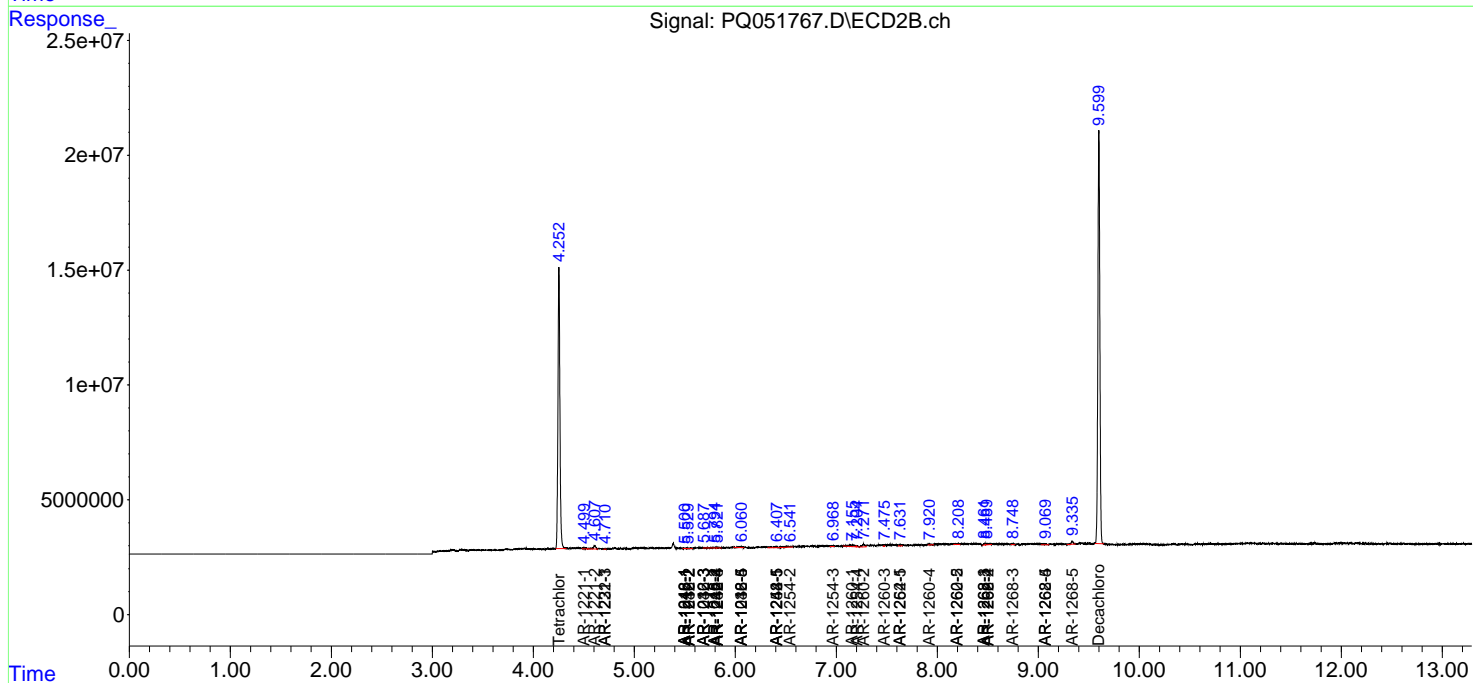
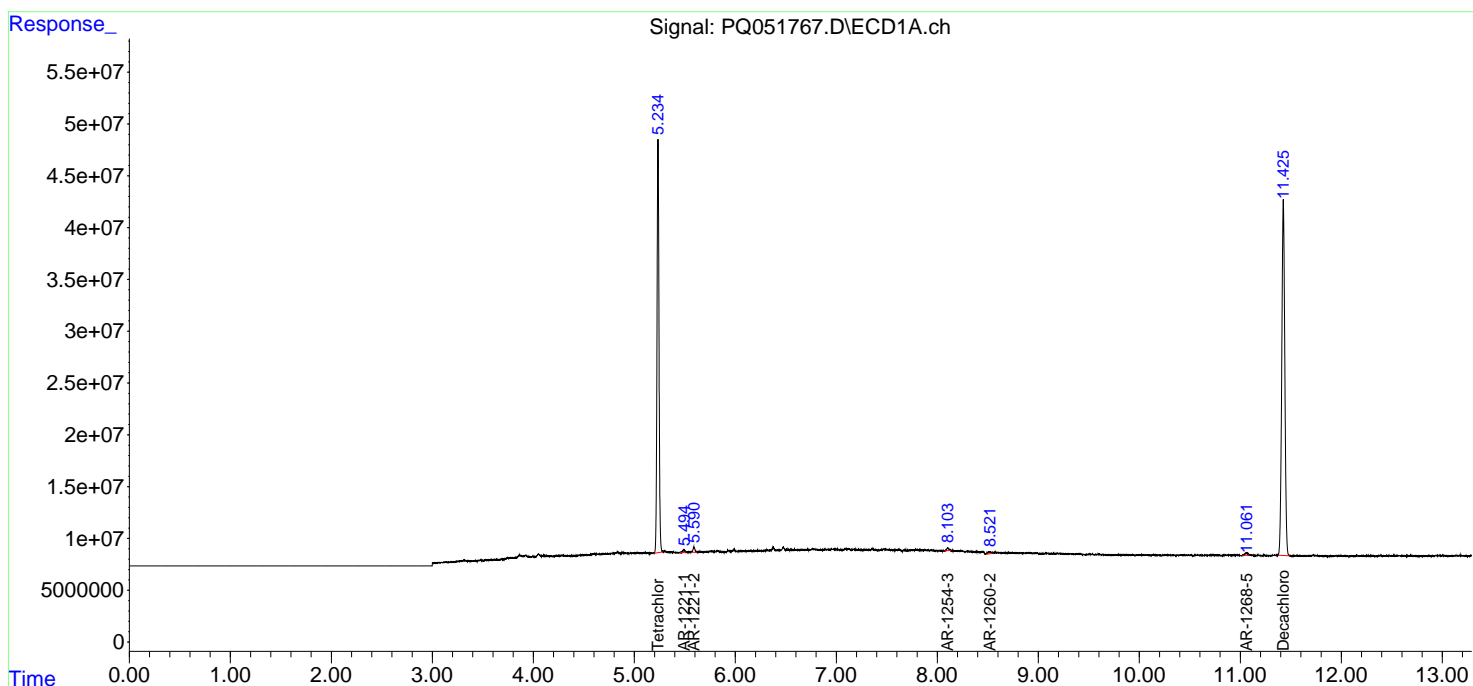
(f)=RT Delta > 1/2 Window (#)=Amounts differ by > 25% (m)=manual int.

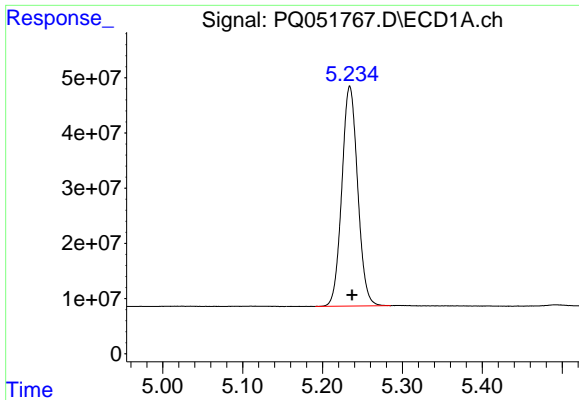
Data Path : Z:\pestpcbsrv\HPCHEM1\ECD_Q\Data\PQ011721\
 Data File : PQ051767.D
 Signal(s) : Signal #1: ECD1A.ch Signal #2: ECD2B.ch
 Acq On : 16 Jan 2021 01:41
 Operator : DD\AJ
 Sample : PB134168BL
 Misc :
 ALS Vial : 8 Sample Multiplier: 1

Instrument :
 ECD_O
 ClientSampled :
 ALCS83

Integration File signal 1: autoint1.e
 Integration File signal 2: autoint2.e
 Quant Time: Jan 16 05:01:10 2021
 Quant Method : Z:\pestpcbsrv\HPCHEM1\ECD_Q\Method\PQ122120CLP.M
 Quant Title : GC EXTRACTABLES
 QLast Update : Tue Dec 22 06:18:29 2020
 Response via : Initial Calibration
 Integrator: ChemStation

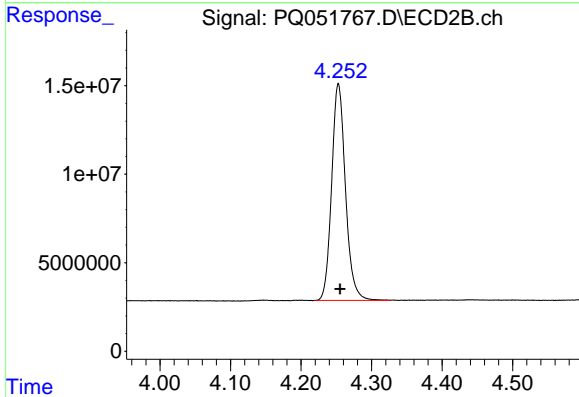
Volume Inj. : 1 µl
 Signal #1 Phase : ZB MR1 Signal #2 Phase: ZB MR2
 Signal #1 Info : 30Mx0.32mmx 0.5µm Signal #2 Info : 30M x 0.32mm x 0.25µm



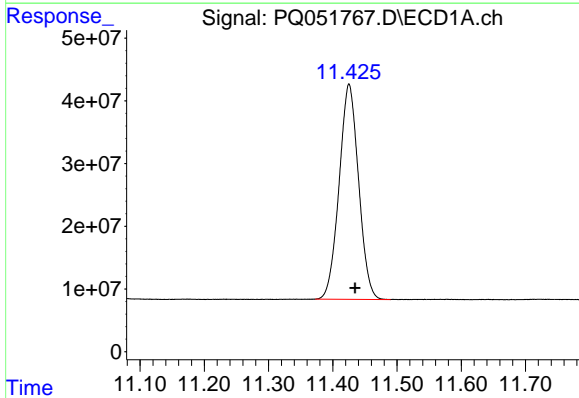


#1 Tetrachloro-m-xylene
 R.T.: 5.234 min
 Delta R.T.: -0.003 min
 Response: 548953822
 Conc: 21.29 ng/ml

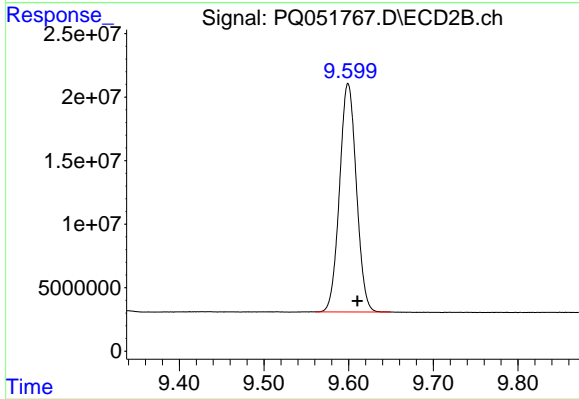
Instrument :
 ECD_O
 ClientSampleId :
 ALCS83



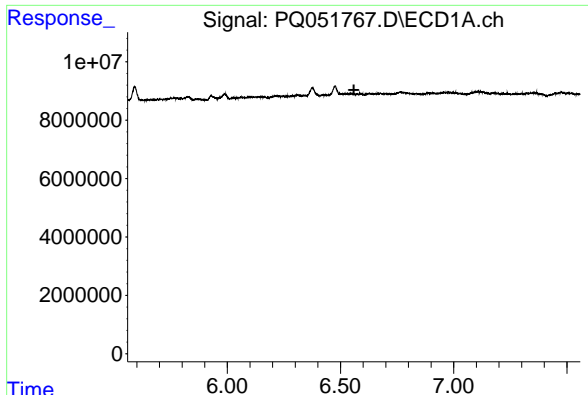
#1 Tetrachloro-m-xylene
 R.T.: 4.253 min
 Delta R.T.: -0.002 min
 Response: 166522027
 Conc: 22.80 ng/ml



#2 Decachlorobiphenyl
 R.T.: 11.425 min
 Delta R.T.: -0.009 min
 Response: 721343362
 Conc: 39.34 ng/ml



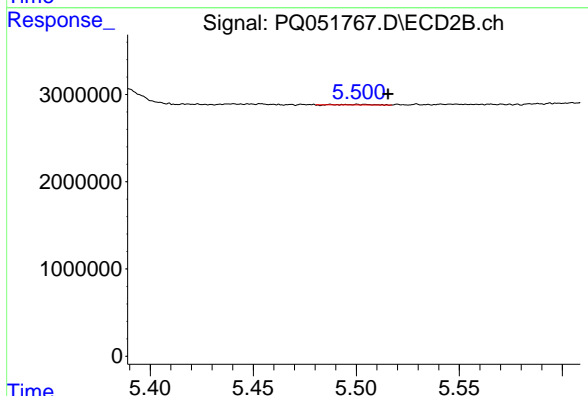
#2 Decachlorobiphenyl
 R.T.: 9.599 min
 Delta R.T.: -0.011 min
 Response: 248558798
 Conc: 40.87 ng/ml



#3 AR-1016-1

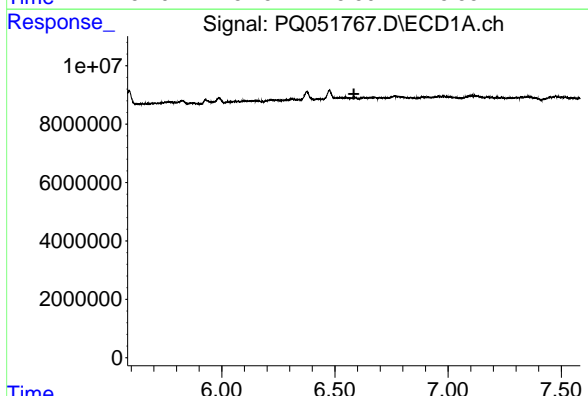
R.T.: 0.000 min
 Exp R.T. : 6.559 min
 Response: 0
 Conc: N.D.

Instrument :
 ECD_O
 ClientSampleId :
 ALCS83



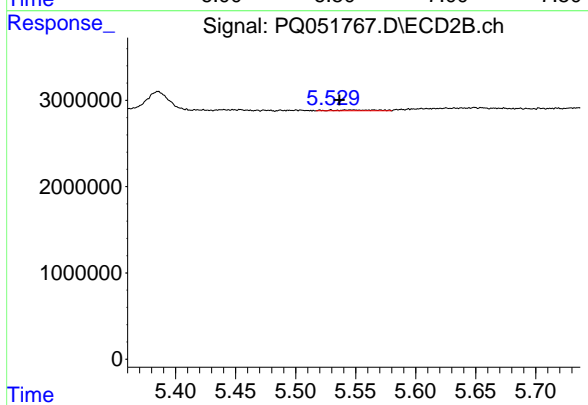
#3 AR-1016-1

R.T.: 5.501 min
 Delta R.T.: -0.014 min
 Response: 53790
 Conc: 0.21 ng/ml



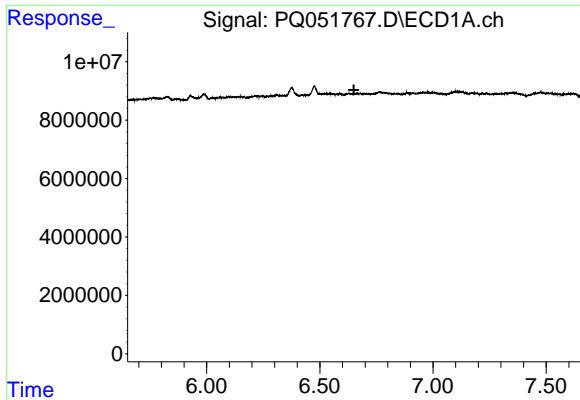
#4 AR-1016-2

R.T.: 0.000 min
 Exp R.T. : 6.584 min
 Response: 0
 Conc: N.D.



#4 AR-1016-2

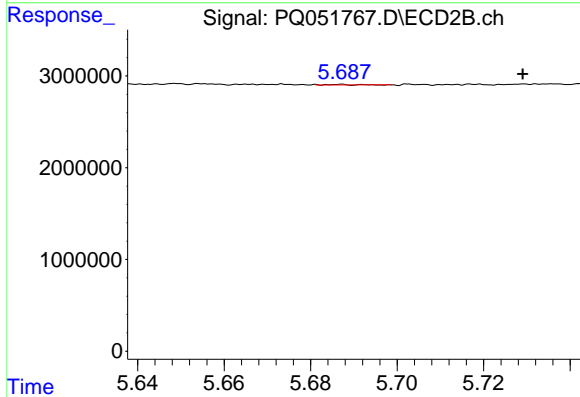
R.T.: 5.542 min
 Delta R.T.: 0.006 min
 Response: 250434
 Conc: 0.70 ng/ml



#5 AR-1016-3

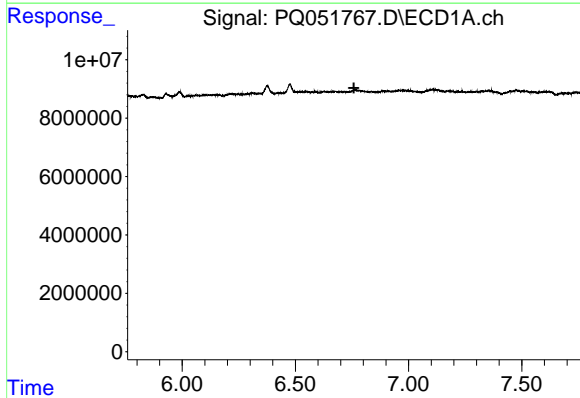
R.T.: 0.000 min
 Exp R.T. : 6.651 min
 Response: 0
 Conc: N.D.

Instrument :
 ECD_O
 ClientSampleId :
 ALCS83



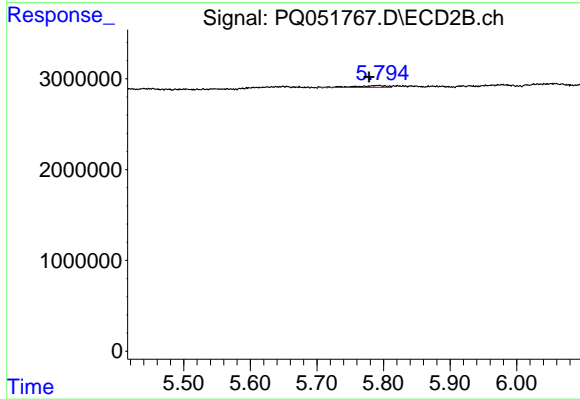
#5 AR-1016-3

R.T.: 5.687 min
 Delta R.T.: -0.043 min
 Response: 32041
 Conc: 0.17 ng/ml



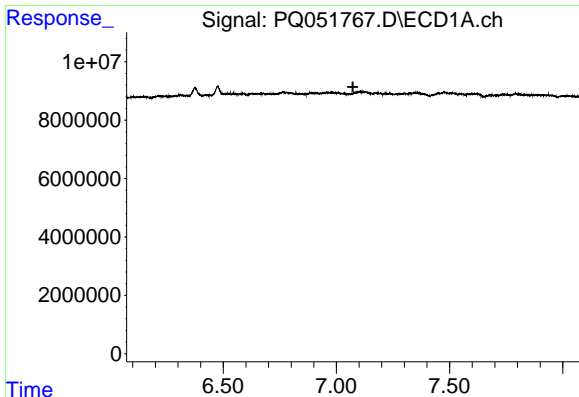
#6 AR-1016-4

R.T.: 0.000 min
 Exp R.T. : 6.759 min
 Response: 0
 Conc: N.D.



#6 AR-1016-4

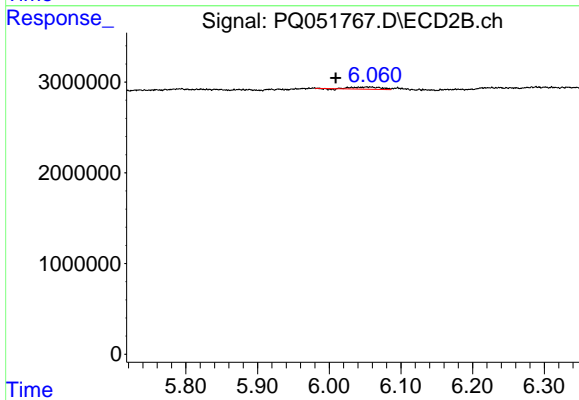
R.T.: 5.792 min
 Delta R.T.: 0.013 min
 Response: 645086
 Conc: 4.47 ng/ml



#7 AR-1016-5

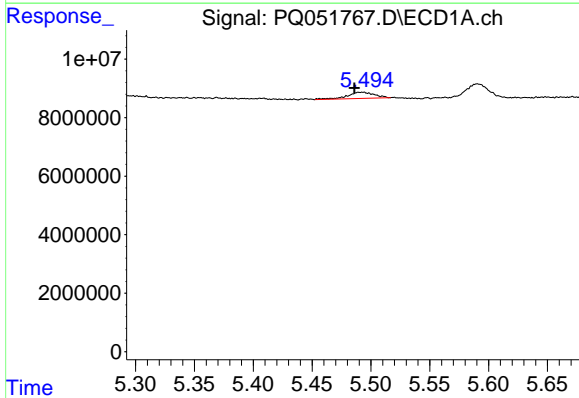
R.T.: 0.000 min
 Exp R.T.: 7.073 min
 Response: 0
 Conc: N.D.

Instrument :
 ECD_O
 ClientSampleId :
 ALCS83



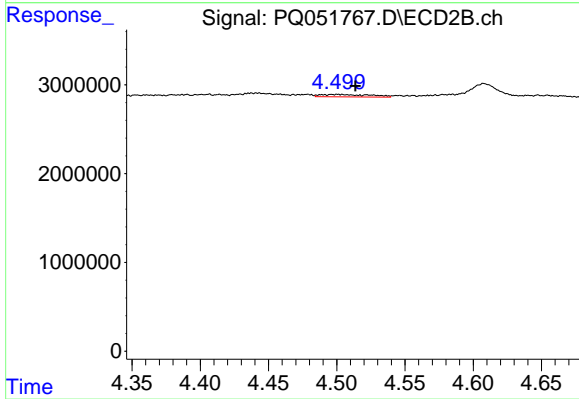
#7 AR-1016-5

R.T.: 6.056 min
 Delta R.T.: 0.047 min
 Response: 673748
 Conc: 3.54 ng/ml



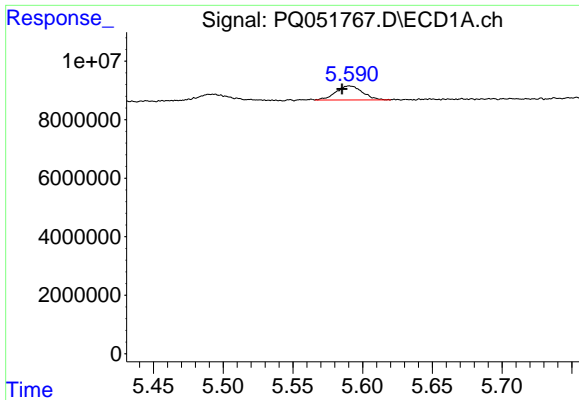
#8 AR-1221-1

R.T.: 5.494 min
 Delta R.T.: 0.008 min
 Response: 3392807
 Conc: 12.78 ng/ml



#8 AR-1221-1

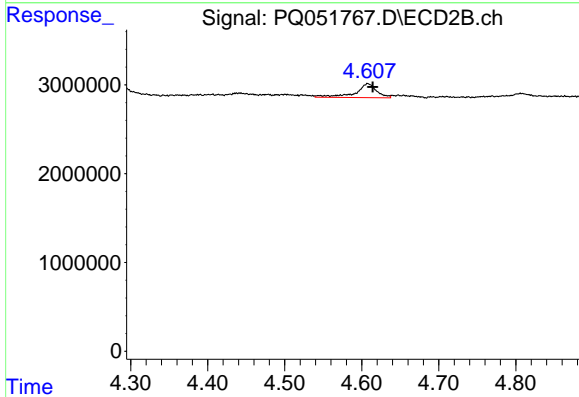
R.T.: 4.501 min
 Delta R.T.: -0.012 min
 Response: 693795
 Conc: 9.00 ng/ml



#9 AR-1221-2

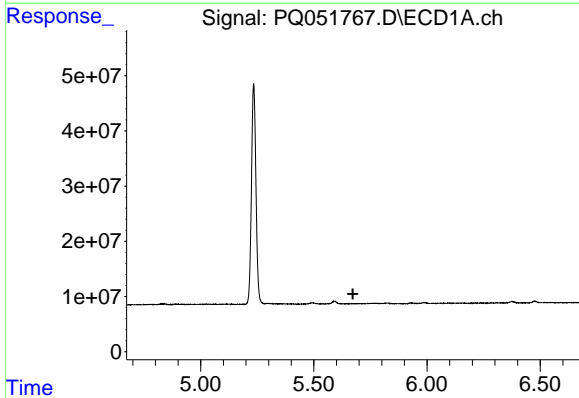
R.T.: 5.590 min
 Delta R.T.: 0.005 min
 Response: 6410920
 Conc: 35.10 ng/ml

Instrument :
 ECD_O
 ClientSampled :
 ALCS83



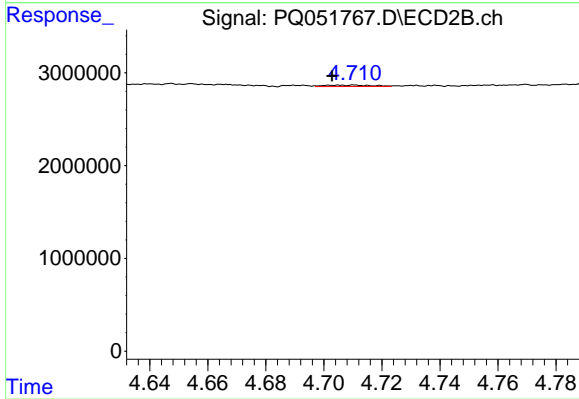
#9 AR-1221-2

R.T.: 4.608 min
 Delta R.T.: -0.006 min
 Response: 2965127
 Conc: 55.44 ng/ml



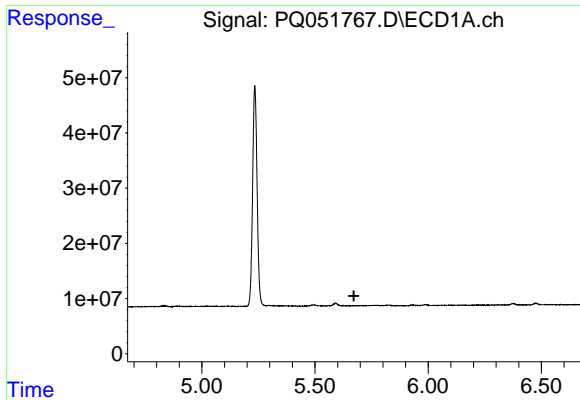
#10 AR-1221-3

R.T.: 0.000 min
 Exp R.T. : 5.672 min
 Response: 0
 Conc: N.D.



#10 AR-1221-3

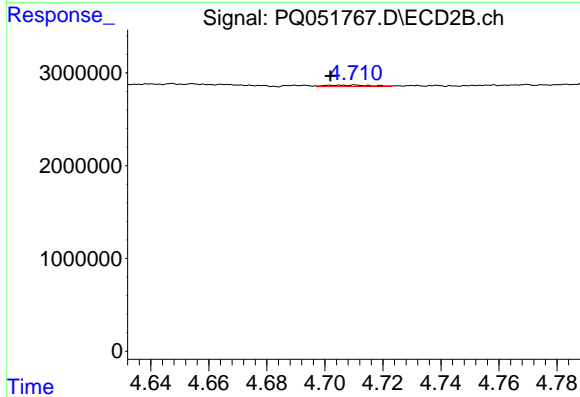
R.T.: 4.705 min
 Delta R.T.: 0.002 min
 Response: 183929
 Conc: 1.00 ng/ml



#11 AR-1232-1

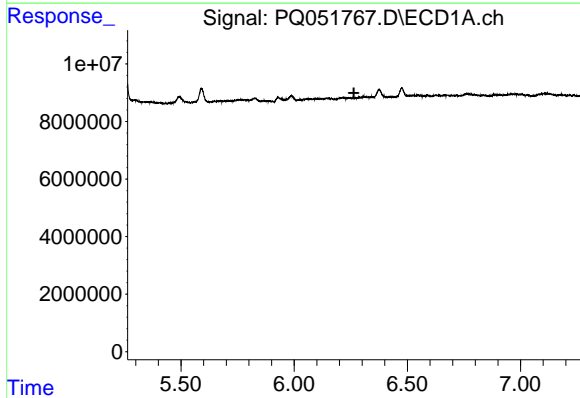
R.T.: 0.000 min
 Exp R.T. : 5.672 min
 Response: 0
 Conc: N.D.

Instrument :
 ECD_O
 ClientSampleId :
 ALCS83



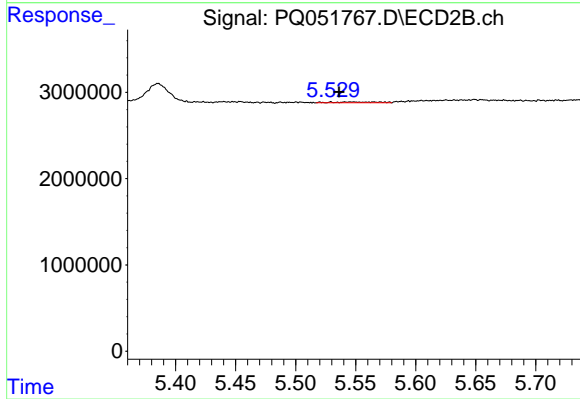
#11 AR-1232-1

R.T.: 4.705 min
 Delta R.T.: 0.003 min
 Response: 183929
 Conc: 1.35 ng/ml



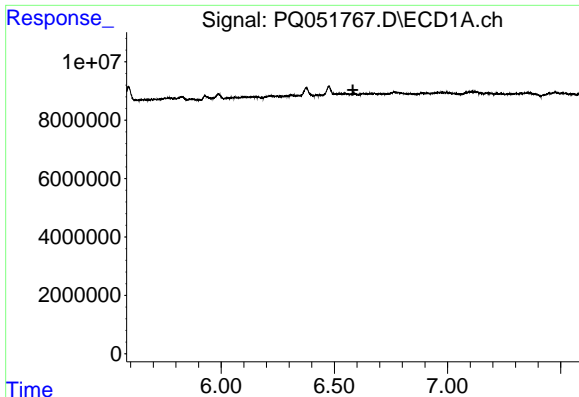
#12 AR-1232-2

R.T.: 0.000 min
 Exp R.T. : 6.264 min
 Response: 0
 Conc: N.D.



#12 AR-1232-2

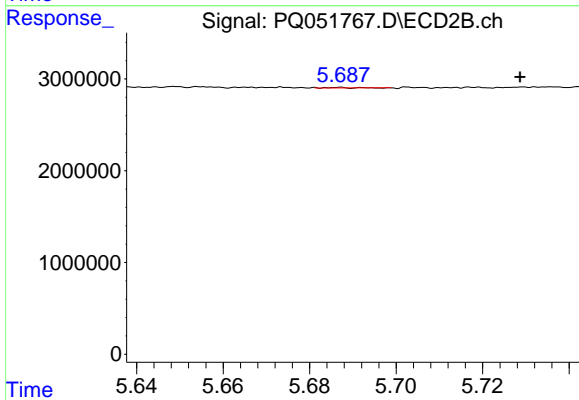
R.T.: 5.542 min
 Delta R.T.: 0.006 min
 Response: 250434
 Conc: 1.78 ng/ml



#13 AR-1232-3

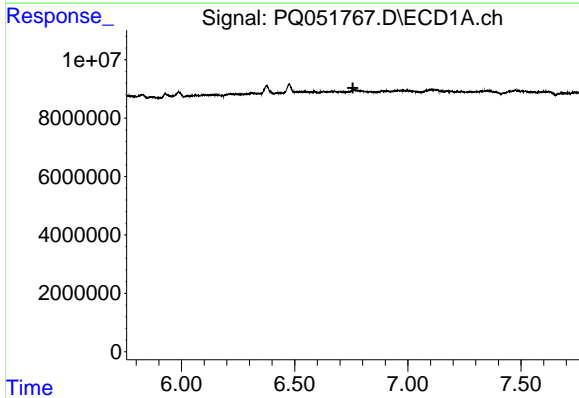
R.T.: 0.000 min
 Exp R.T. : 6.582 min
 Response: 0
 Conc: N.D.

Instrument :
 ECD_O
 ClientSampleId :
 ALCS83



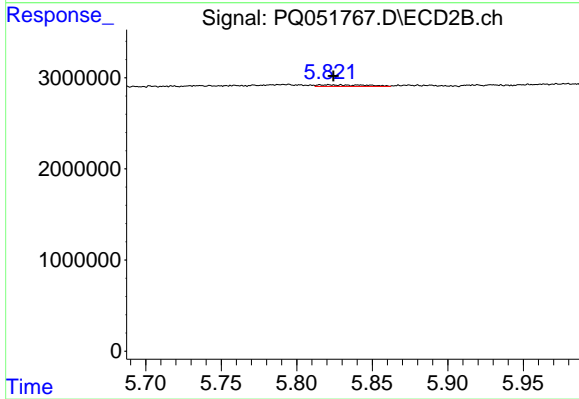
#13 AR-1232-3

R.T.: 5.687 min
 Delta R.T.: -0.042 min
 Response: 32041
 Conc: 0.45 ng/ml



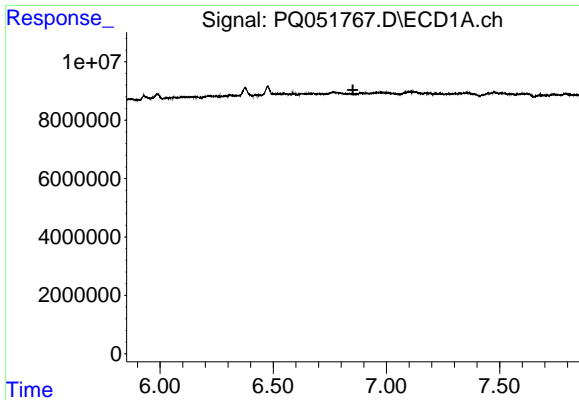
#14 AR-1232-4

R.T.: 0.000 min
 Exp R.T. : 6.757 min
 Response: 0
 Conc: N.D.



#14 AR-1232-4

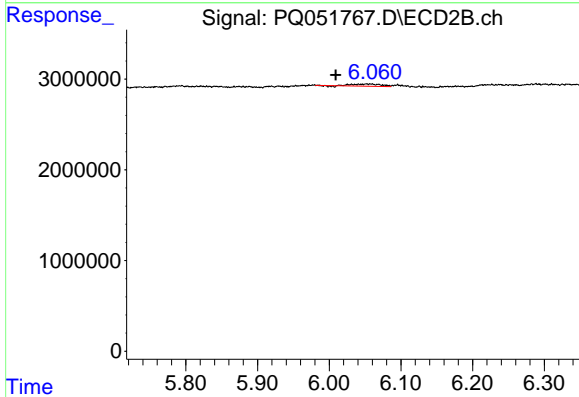
R.T.: 5.820 min
 Delta R.T.: -0.004 min
 Response: 386936
 Conc: 6.29 ng/ml



#15 AR-1232-5

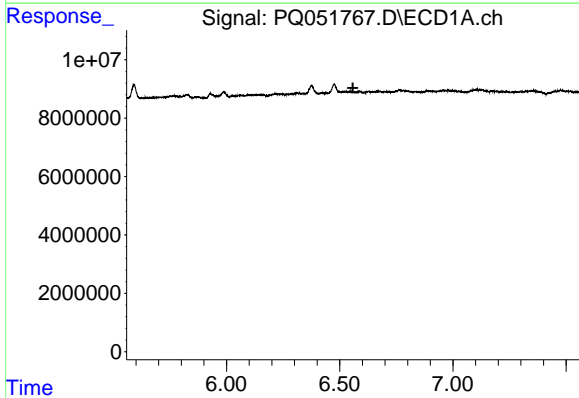
R.T.: 0.000 min
 Exp R.T. : 6.852 min
 Response: 0
 Conc: N.D.

Instrument :
 ECD_O
 ClientSampleId :
 ALCS83



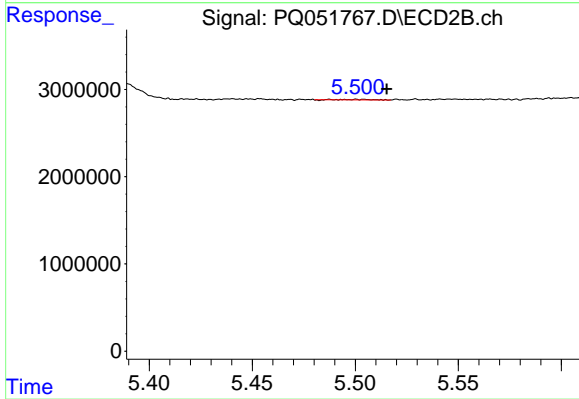
#15 AR-1232-5

R.T.: 6.056 min
 Delta R.T.: 0.047 min
 Response: 673748
 Conc: 10.50 ng/ml



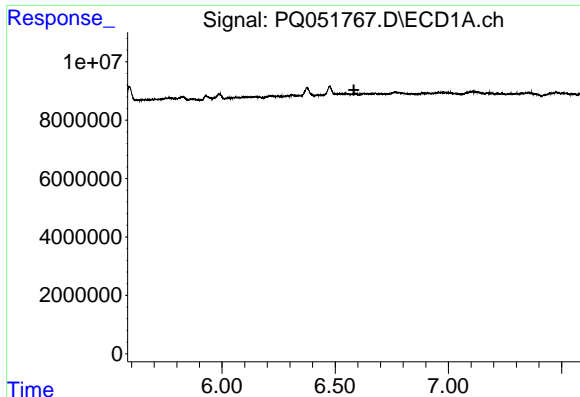
#16 AR-1242-1

R.T.: 0.000 min
 Exp R.T. : 6.558 min
 Response: 0
 Conc: N.D.



#16 AR-1242-1

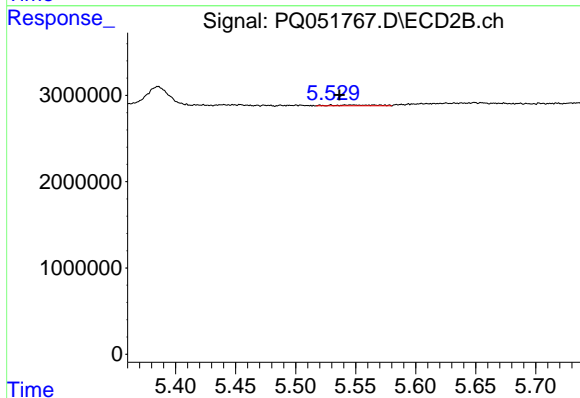
R.T.: 5.501 min
 Delta R.T.: -0.014 min
 Response: 53790
 Conc: 0.26 ng/ml



#17 AR-1242-2

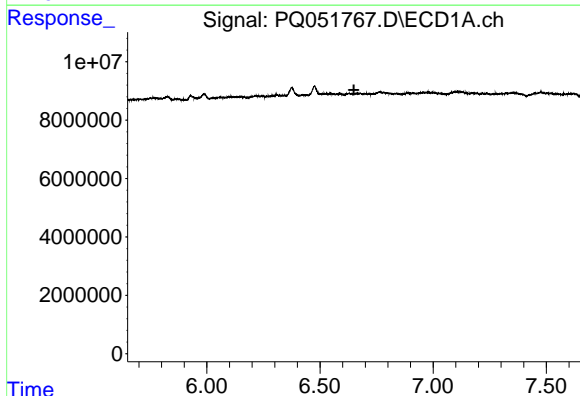
R.T.: 0.000 min
 Exp R.T. : 6.583 min
 Response: 0
 Conc: N.D.

Instrument :
 ECD_O
 ClientSampleId :
 ALCS83



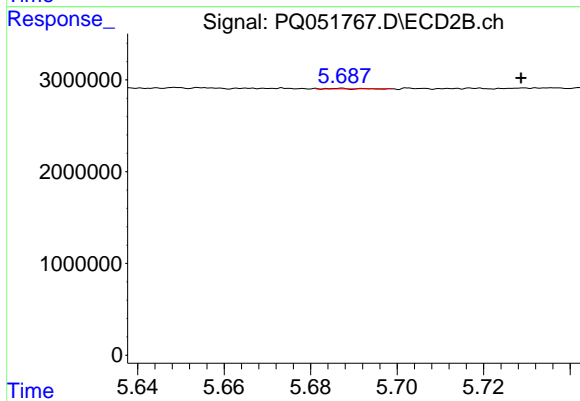
#17 AR-1242-2

R.T.: 5.542 min
 Delta R.T.: 0.005 min
 Response: 250434
 Conc: 0.86 ng/ml



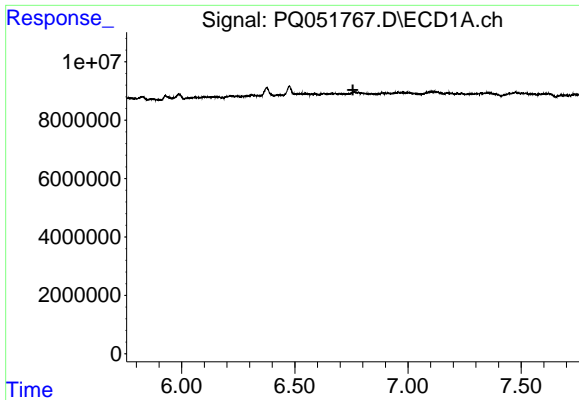
#18 AR-1242-3

R.T.: 0.000 min
 Exp R.T. : 6.650 min
 Response: 0
 Conc: N.D.



#18 AR-1242-3

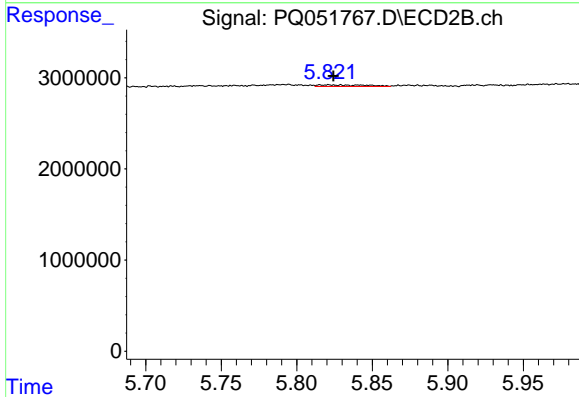
R.T.: 5.687 min
 Delta R.T.: -0.042 min
 Response: 32041
 Conc: 0.21 ng/ml



#19 AR-1242-4

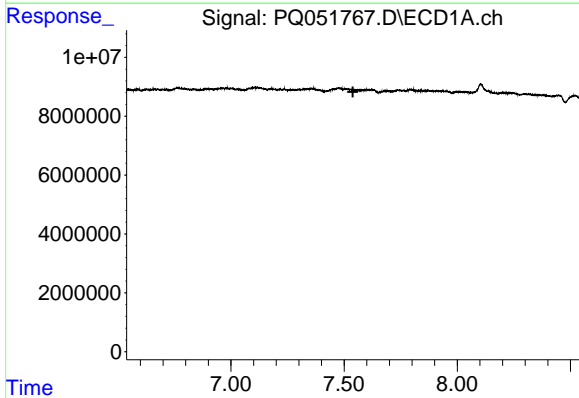
R.T.: 0.000 min
 Exp R.T. : 6.757 min
 Response: 0
 Conc: N.D.

Instrument :
 ECD_O
 ClientSampleId :
 ALCS83



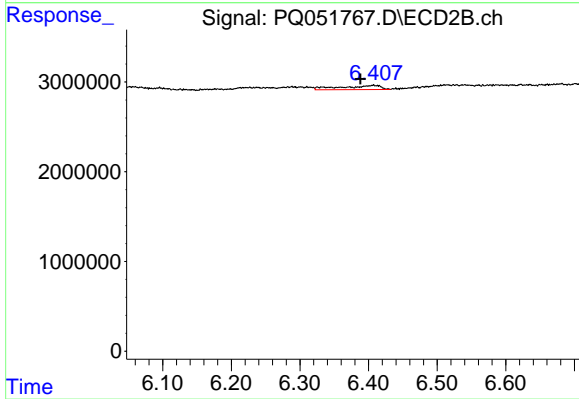
#19 AR-1242-4

R.T.: 5.820 min
 Delta R.T.: -0.004 min
 Response: 386936
 Conc: 2.67 ng/ml



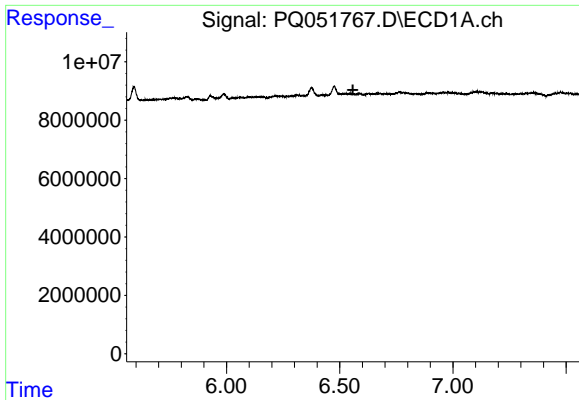
#20 AR-1242-5

R.T.: 0.000 min
 Exp R.T. : 7.539 min
 Response: 0
 Conc: N.D.



#20 AR-1242-5

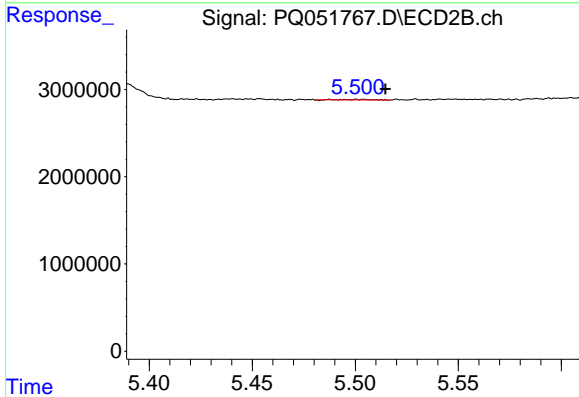
R.T.: 6.407 min
 Delta R.T.: 0.019 min
 Response: 1802247
 Conc: 9.43 ng/ml



#21 AR-1248-1

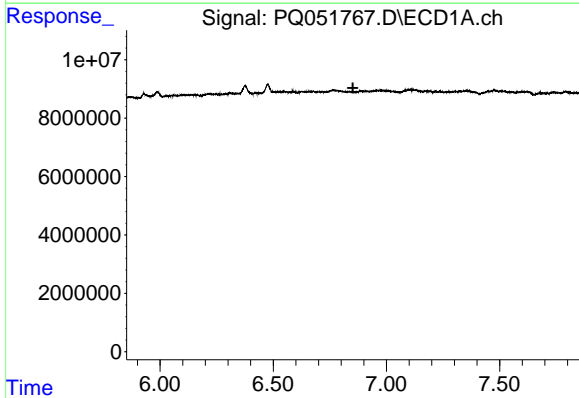
R.T.: 0.000 min
 Exp R.T. : 6.558 min
 Response: 0
 Conc: N.D.

Instrument :
 ECD_O
 ClientSampleId :
 ALCS83



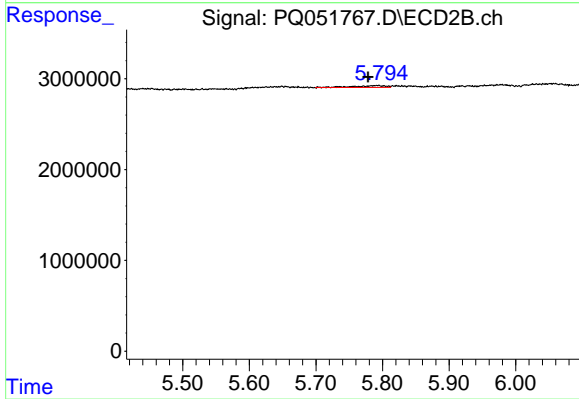
#21 AR-1248-1

R.T.: 5.501 min
 Delta R.T.: -0.014 min
 Response: 53790
 Conc: 0.32 ng/ml



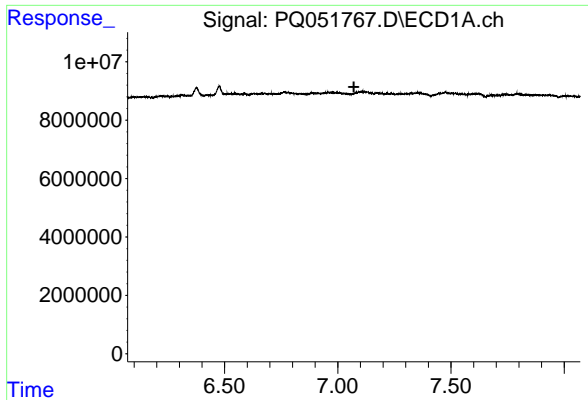
#22 AR-1248-2

R.T.: 0.000 min
 Exp R.T. : 6.852 min
 Response: 0
 Conc: N.D.



#22 AR-1248-2

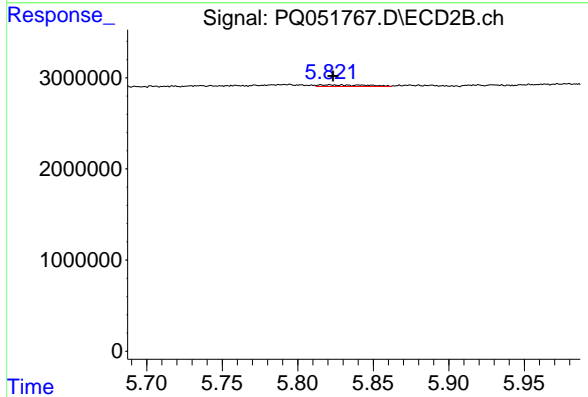
R.T.: 5.792 min
 Delta R.T.: 0.014 min
 Response: 645086
 Conc: 2.85 ng/ml



#23 AR-1248-3

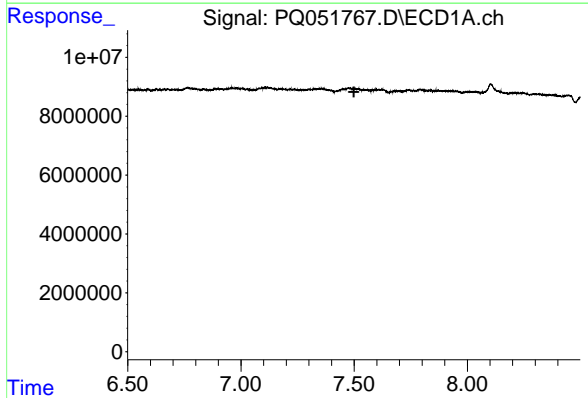
R.T.: 0.000 min
 Exp R.T. : 7.071 min
 Response: 0
 Conc: N.D.

Instrument :
 ECD_O
 ClientSampleId :
 ALCS83



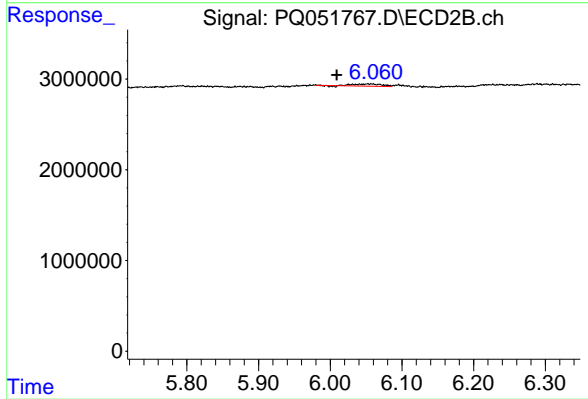
#23 AR-1248-3

R.T.: 5.820 min
 Delta R.T.: -0.003 min
 Response: 386936
 Conc: 1.65 ng/ml



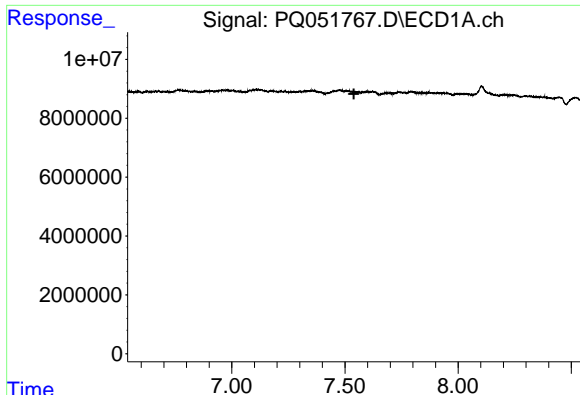
#24 AR-1248-4

R.T.: 0.000 min
 Exp R.T. : 7.499 min
 Response: 0
 Conc: N.D.



#24 AR-1248-4

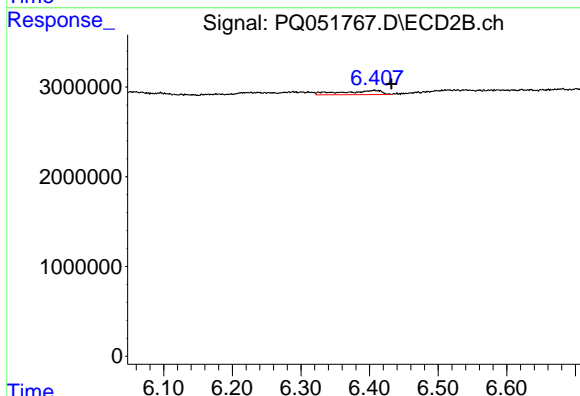
R.T.: 6.056 min
 Delta R.T.: 0.047 min
 Response: 673748
 Conc: 2.45 ng/ml



#25 AR-1248-5

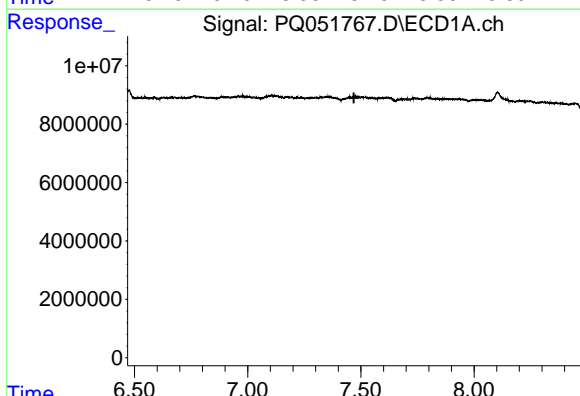
R.T.: 0.000 min
 Exp R.T. : 7.539 min
 Response: 0
 Conc: N.D.

Instrument :
 ECD_O
 ClientSampleId :
 ALCS83



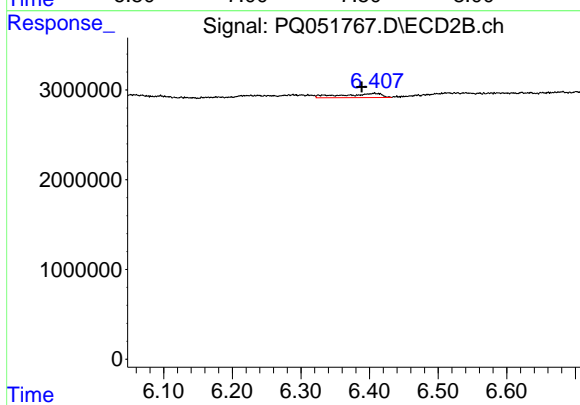
#25 AR-1248-5

R.T.: 6.407 min
 Delta R.T.: -0.024 min
 Response: 1802247
 Conc: 6.25 ng/ml



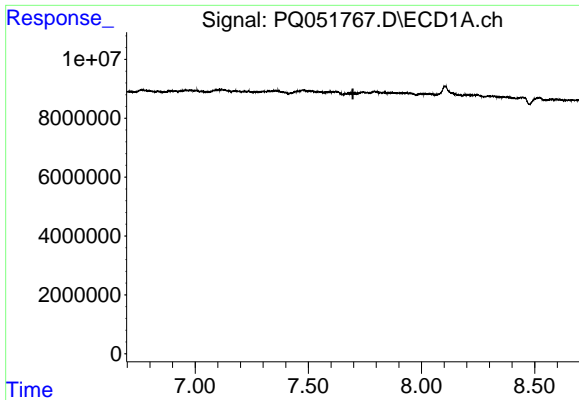
#26 AR-1254-1

R.T.: 0.000 min
 Exp R.T. : 7.469 min
 Response: 0
 Conc: N.D.



#26 AR-1254-1

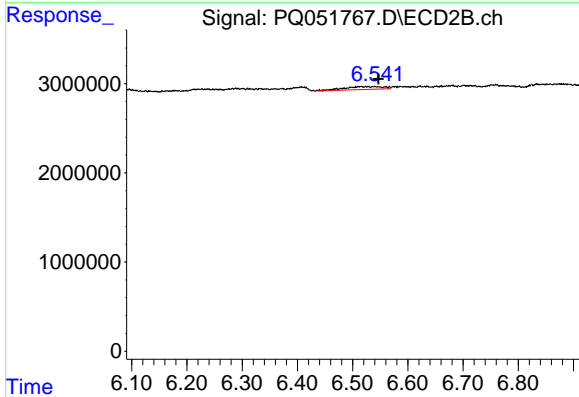
R.T.: 6.407 min
 Delta R.T.: 0.019 min
 Response: 1802247
 Conc: 4.25 ng/ml



#27 AR-1254-2

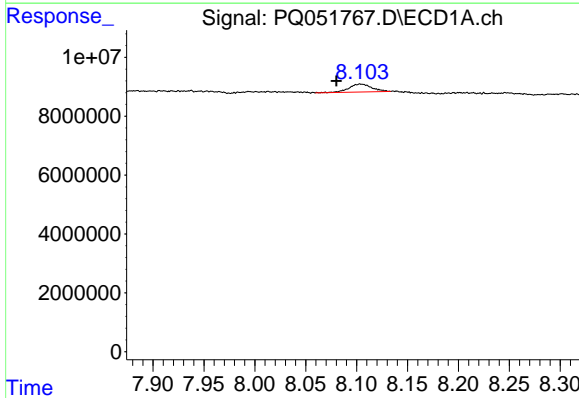
R.T.: 0.000 min
 Exp R.T.: 7.697 min
 Response: 0
 Conc: N.D.

Instrument :
 ECD_O
 ClientSampleId :
 ALCS83



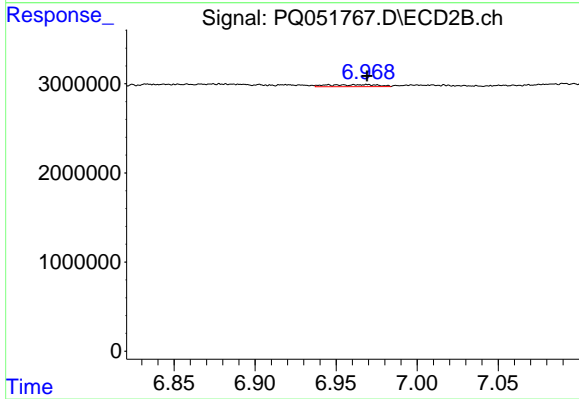
#27 AR-1254-2

R.T.: 6.540 min
 Delta R.T.: -0.007 min
 Response: 1636473
 Conc: 4.46 ng/ml



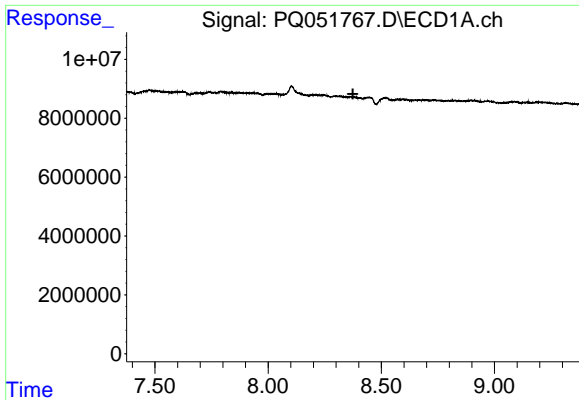
#28 AR-1254-3

R.T.: 8.103 min
 Delta R.T.: 0.023 min
 Response: 4217991
 Conc: 2.55 ng/ml



#28 AR-1254-3

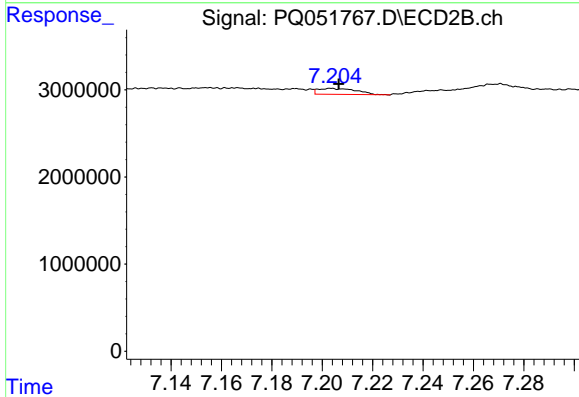
R.T.: 6.969 min
 Delta R.T.: 0.000 min
 Response: 466665
 Conc: 0.76 ng/ml



#29 AR-1254-4

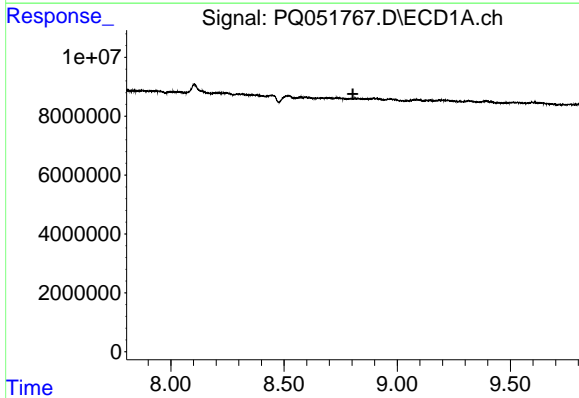
R.T.: 0.000 min
 Exp R.T. : 8.374 min
 Response: 0
 Conc: N.D.

Instrument :
 ECD_O
 ClientSampleId :
 ALCS83



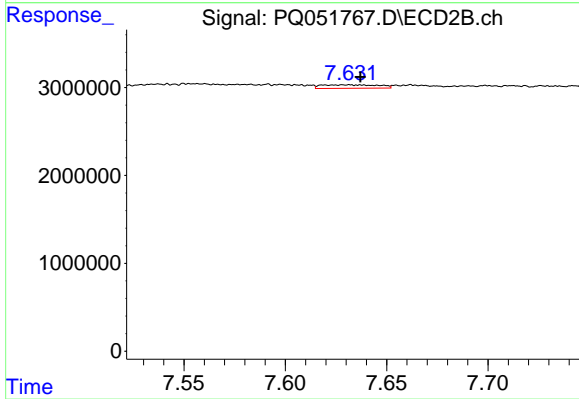
#29 AR-1254-4

R.T.: 7.204 min
 Delta R.T.: -0.003 min
 Response: 723498
 Conc: 1.92 ng/ml



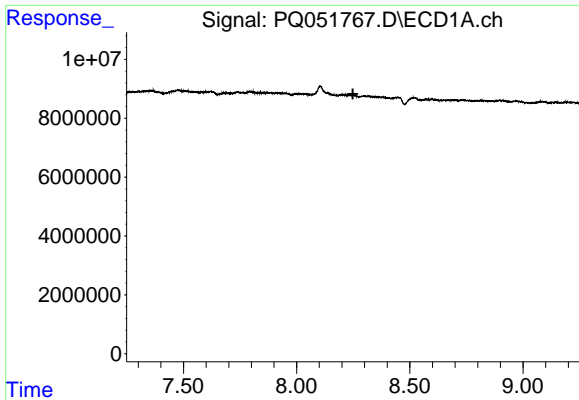
#30 AR-1254-5

R.T.: 0.000 min
 Exp R.T. : 8.804 min
 Response: 0
 Conc: N.D.



#30 AR-1254-5

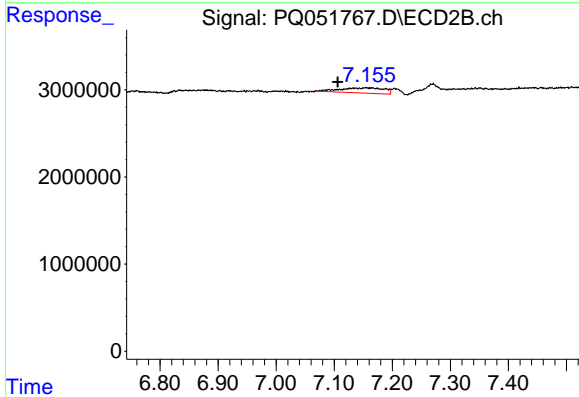
R.T.: 7.632 min
 Delta R.T.: -0.006 min
 Response: 776252
 Conc: 1.48 ng/ml



#31 AR-1260-1

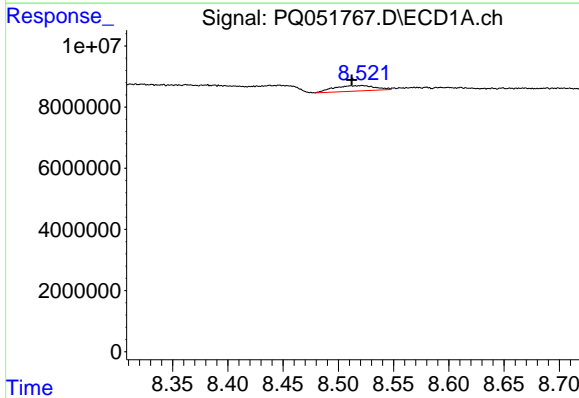
R.T.: 0.000 min
 Exp R.T.: 8.249 min
 Response: 0
 Conc: N.D.

Instrument :
 ECD_O
 ClientSampleId :
 ALCS83



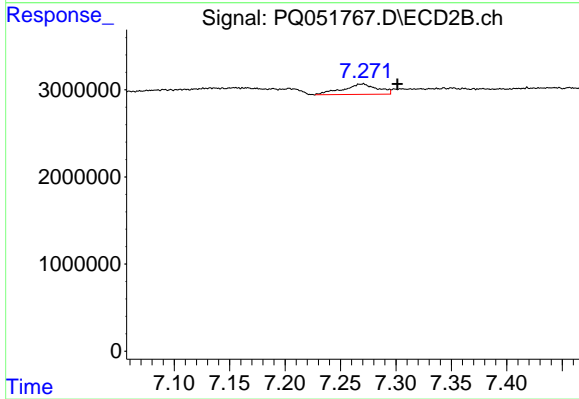
#31 AR-1260-1

R.T.: 7.154 min
 Delta R.T.: 0.048 min
 Response: 3133598
 Conc: 8.83 ng/ml



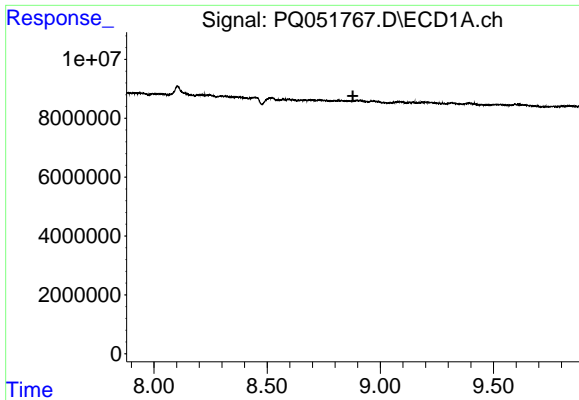
#32 AR-1260-2

R.T.: 8.522 min
 Delta R.T.: 0.010 min
 Response: 4668513
 Conc: 3.78 ng/ml



#32 AR-1260-2

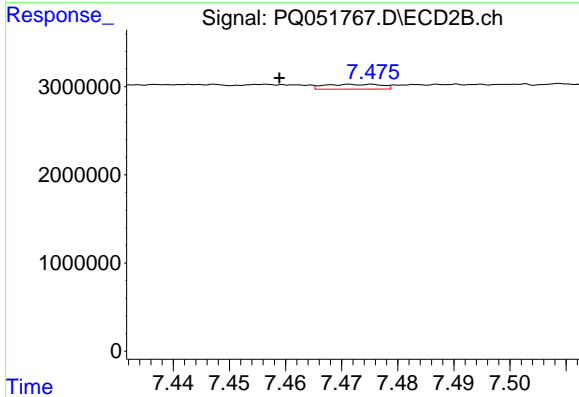
R.T.: 7.269 min
 Delta R.T.: -0.032 min
 Response: 2605066
 Conc: 5.89 ng/ml



#33 AR-1260-3

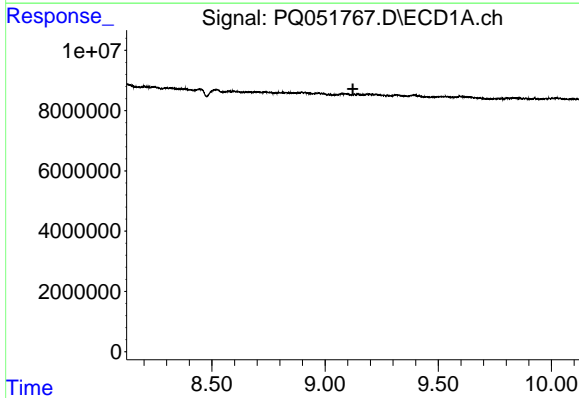
R.T.: 0.000 min
 Exp R.T.: 8.879 min
 Response: 0
 Conc: N.D.

Instrument :
 ECD_O
 ClientSampled :
 ALCS83



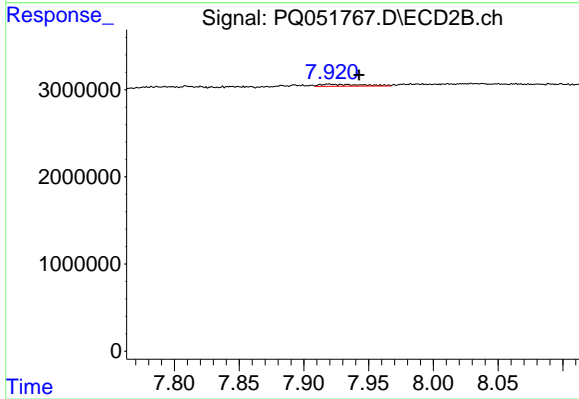
#33 AR-1260-3

R.T.: 7.473 min
 Delta R.T.: 0.014 min
 Response: 388670
 Conc: 0.94 ng/ml



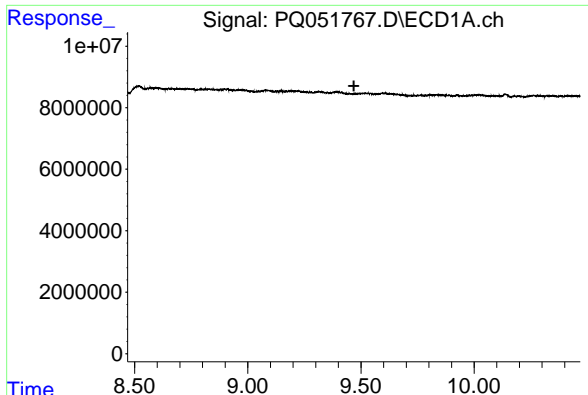
#34 AR-1260-4

R.T.: 0.000 min
 Exp R.T.: 9.123 min
 Response: 0
 Conc: N.D.



#34 AR-1260-4

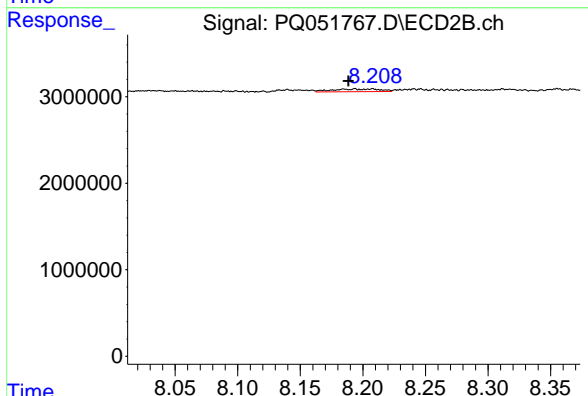
R.T.: 7.920 min
 Delta R.T.: -0.023 min
 Response: 530096
 Conc: 1.53 ng/ml



#35 AR-1260-5

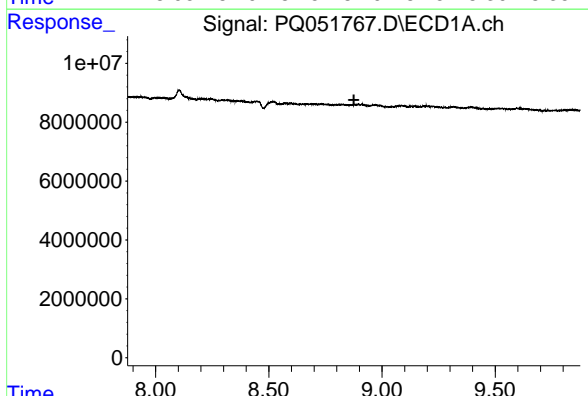
R.T.: 0.000 min
 Exp R.T. : 9.469 min
 Response: 0
 Conc: N.D.

Instrument :
 ECD_O
 ClientSampleId :
 ALCS83



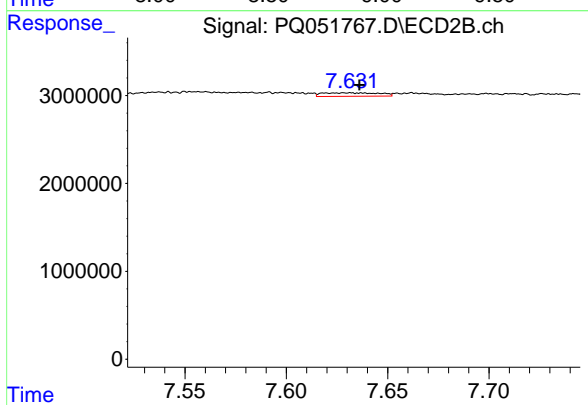
#35 AR-1260-5

R.T.: 8.194 min
 Delta R.T.: 0.005 min
 Response: 829399
 Conc: 0.96 ng/ml



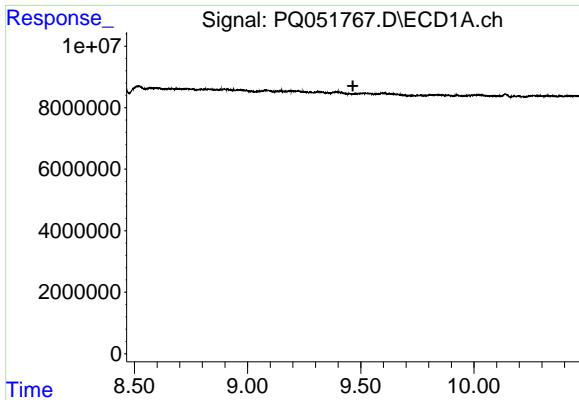
#36 AR-1262-1

R.T.: 0.000 min
 Exp R.T. : 8.876 min
 Response: 0
 Conc: N.D.



#36 AR-1262-1

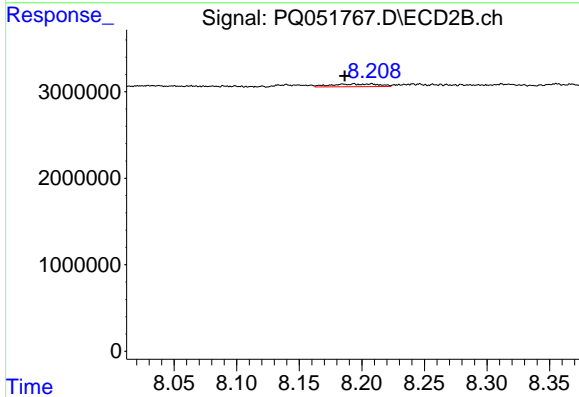
R.T.: 7.632 min
 Delta R.T.: -0.005 min
 Response: 776252
 Conc: 2.71 ng/ml



#37 AR-1262-2

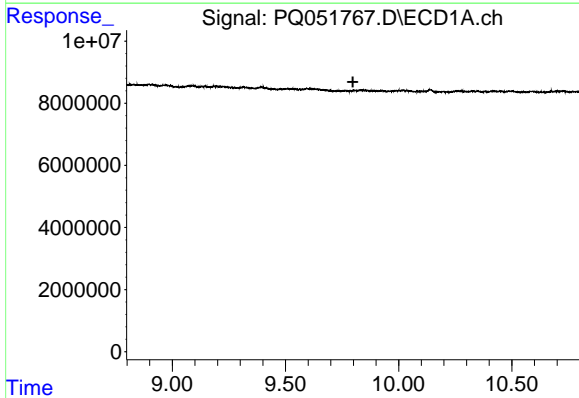
R.T.: 0.000 min
 Exp R.T. : 9.465 min
 Response: 0
 Conc: N.D.

Instrument :
 ECD_O
 ClientSampleId :
 ALCS83



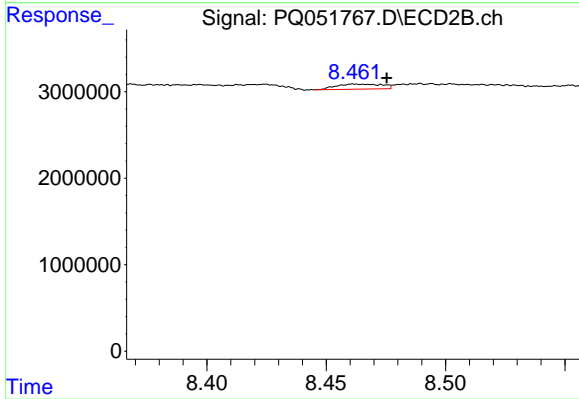
#37 AR-1262-2

R.T.: 8.194 min
 Delta R.T.: 0.007 min
 Response: 829399
 Conc: 0.81 ng/ml



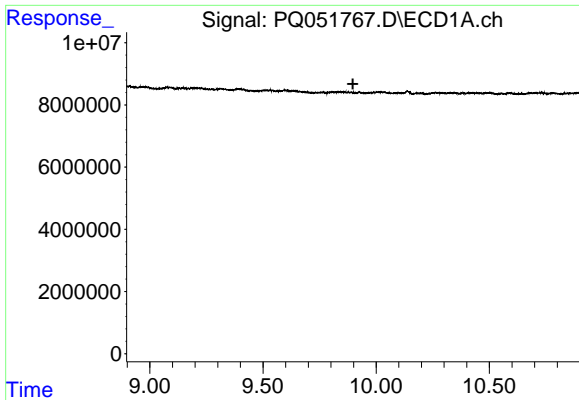
#38 AR-1262-3

R.T.: 0.000 min
 Exp R.T. : 9.798 min
 Response: 0
 Conc: N.D.



#38 AR-1262-3

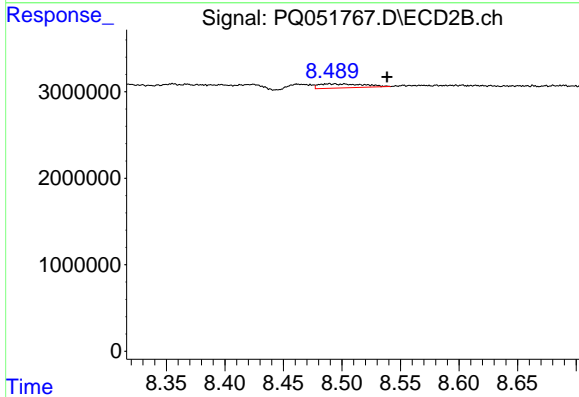
R.T.: 8.464 min
 Delta R.T.: -0.012 min
 Response: 781119
 Conc: 2.08 ng/ml



#39 AR-1262-4

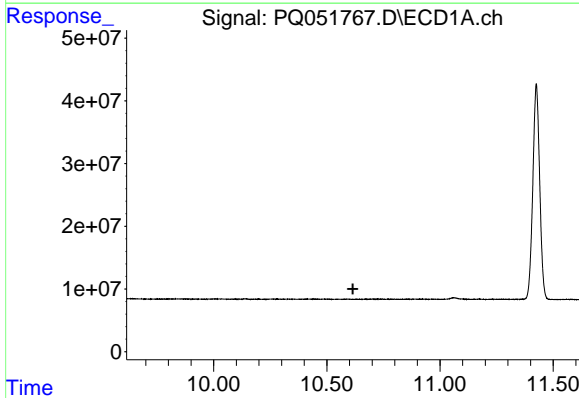
R.T.: 0.000 min
 Exp R.T. : 9.897 min
 Response: 0
 Conc: N.D.

Instrument :
 ECD_O
 ClientSampleId :
 ALCS83



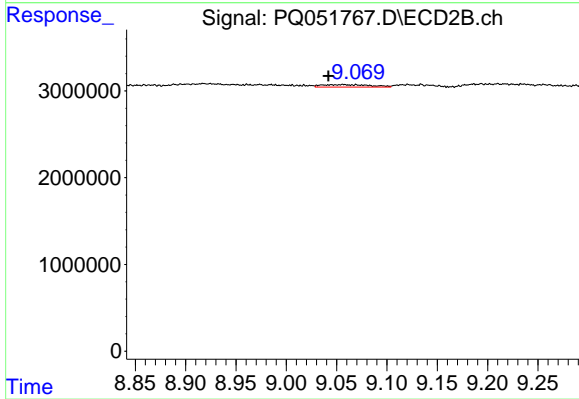
#39 AR-1262-4

R.T.: 8.502 min
 Delta R.T.: -0.037 min
 Response: 1269435
 Conc: 1.73 ng/ml



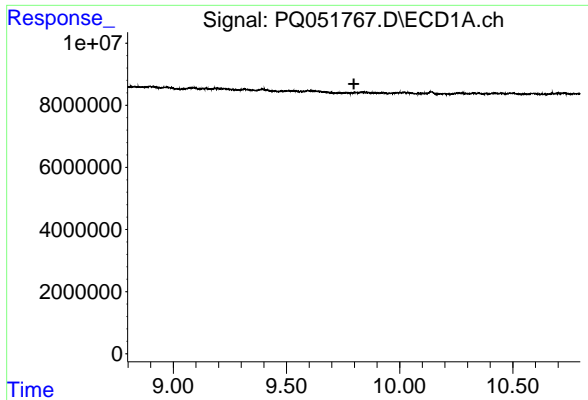
#40 AR-1262-5

R.T.: 0.000 min
 Exp R.T. : 10.615 min
 Response: 0
 Conc: N.D.



#40 AR-1262-5

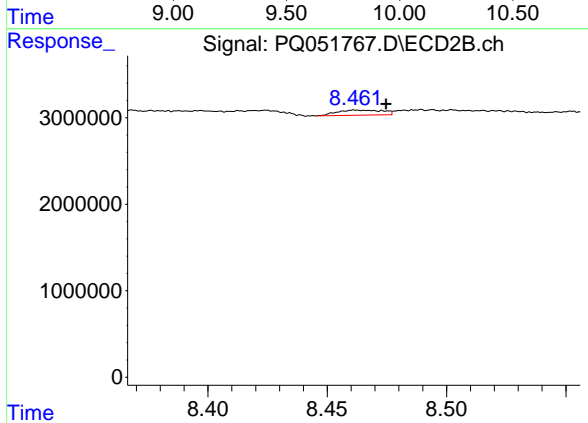
R.T.: 9.069 min
 Delta R.T.: 0.027 min
 Response: 966749
 Conc: 2.94 ng/ml



#41 AR-1268-1

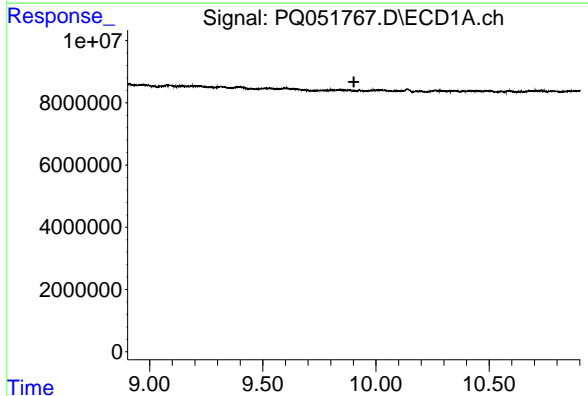
R.T.: 0.000 min
 Exp R.T. : 9.798 min
 Response: 0
 Conc: N.D.

Instrument :
 ECD_O
 ClientSampleId :
 ALCS83



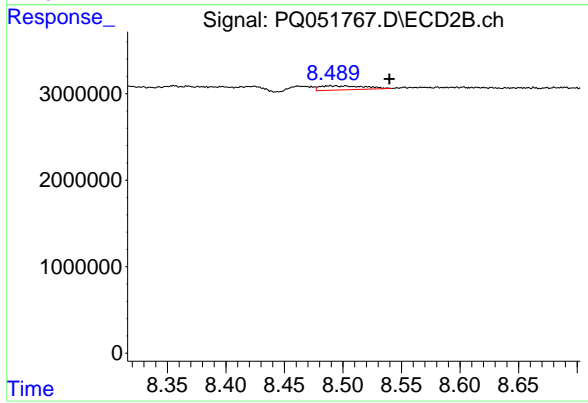
#41 AR-1268-1

R.T.: 8.464 min
 Delta R.T.: -0.011 min
 Response: 781119
 Conc: 0.67 ng/ml



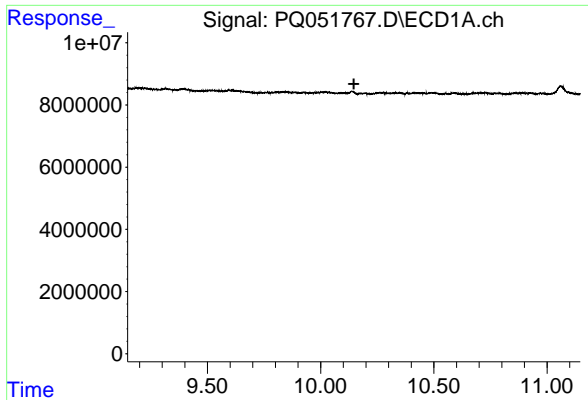
#42 AR-1268-2

R.T.: 0.000 min
 Exp R.T. : 9.902 min
 Response: 0
 Conc: N.D.



#42 AR-1268-2

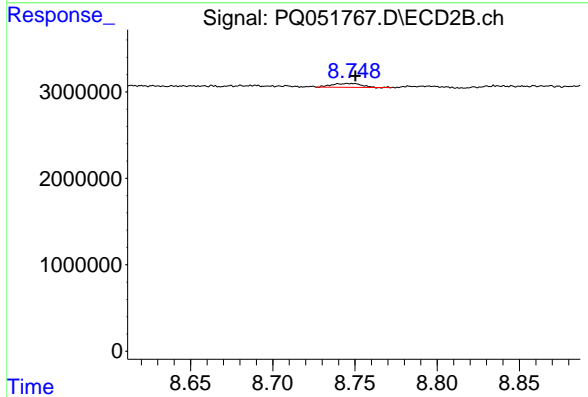
R.T.: 8.502 min
 Delta R.T.: -0.038 min
 Response: 1269435
 Conc: 1.19 ng/ml



#43 AR-1268-3

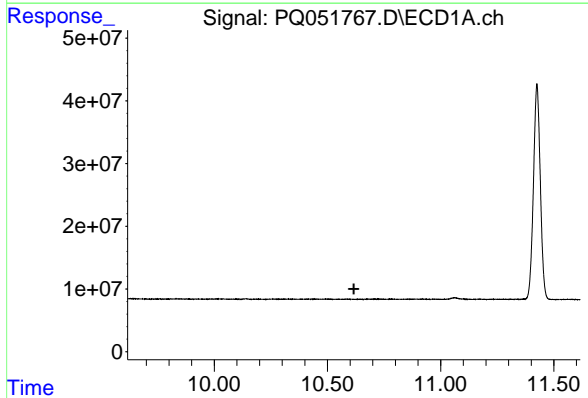
R.T.: 0.000 min
 Exp R.T. : 10.147 min
 Response: 0
 Conc: N.D.

Instrument :
 ECD_O
 ClientSampleId :
 ALCS83



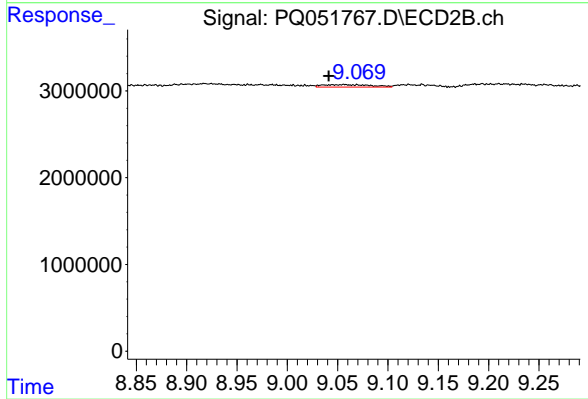
#43 AR-1268-3

R.T.: 8.746 min
 Delta R.T.: -0.004 min
 Response: 578452
 Conc: 0.65 ng/ml



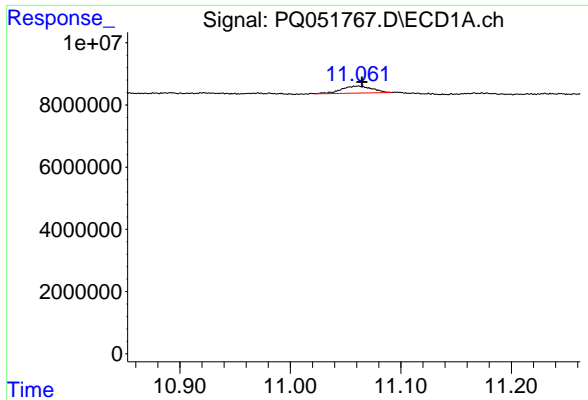
#44 AR-1268-4

R.T.: 0.000 min
 Exp R.T. : 10.617 min
 Response: 0
 Conc: N.D.



#44 AR-1268-4

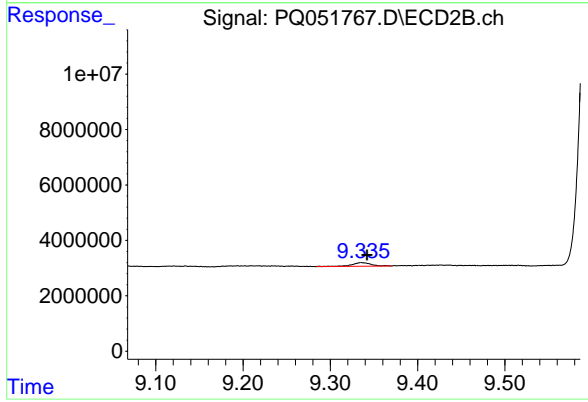
R.T.: 9.069 min
 Delta R.T.: 0.028 min
 Response: 966749
 Conc: 2.62 ng/ml



#45 AR-1268-5

R.T.: 11.062 min
Delta R.T.: -0.003 min
Response: 4355278
Conc: 0.52 ng/ml

Instrument :
ECD_O
ClientSampled :
ALCS83



#45 AR-1268-5

R.T.: 9.336 min
Delta R.T.: -0.006 min
Response: 1987764
Conc: 0.71 ng/ml