

Data Path : Z:\pestpcbsrv\HPCHEM1\ECD_0\Data\P0011619\
 Data File : P0053463.D
 Signal(s) : Signal #1: ECD1A.CH Signal #2: ECD2B.CH
 Acq On : 16 Jan 2019 15:33
 Operator : SM/SJ
 Sample : K1010-03
 Misc :
 ALS Vial : 6 Sample Multiplier: 1

Instrument :
 ECD_0
 ClientSampleId :
 OK-01-011519-A

Integration File signal 1: autoint1.e
 Integration File signal 2: autoint2.e
 Quant Time: Jan 16 21:50:24 2019
 Quant Method : Z:\pestpcbsrv\HPCHEM1\ECD_0\methods\P0010819.M
 Quant Title : GC EXTRACTABLES
 QLast Update : Wed Jan 09 03:34:05 2019
 Response via : Initial Calibration
 Integrator: ChemStation 6890 Scale Mode: Small noise peaks clipped

Volume Inj. : 2 µl
 Signal #1 Phase : ZB-MR1 Signal #2 Phase: ZB-MR2
 Signal #1 Info : 30Mx0.32mmx 0.50µ Signal #2 Info : 30M x 0.32mm x 0.25µm

Compound	RT#1	RT#2	Resp#1	Resp#2	ng/ml	ng/ml

System Monitoring Compounds						
1) SA Tetrachlo...	4.159	3.201	35535874	5334705	26.594	21.335
2) SA Decachlor...	9.606	7.838	16040605	3815451	20.308	16.661
Target Compounds						
3) L1 AR-1016-1	0.000	4.199	0	686302	N.D.	69.610 #
4) L1 AR-1016-2	0.000	4.199	0	686302	N.D.	46.305 #
5) L1 AR-1016-3	5.434	4.357	2299146	245225	71.791	30.474 #
6) L1 AR-1016-4	5.449	4.446	2606296	419978	100.935	69.540 #
7) L1 AR-1016-5	5.772	4.641	463975	394310	19.650	50.117 #
8) L2 AR-1221-1	0.000	3.468	0	119722	N.D.	37.691 #
9) L2 AR-1221-2	4.459	3.468	338222	119722	30.818	49.760 #
10) L2 AR-1221-3	4.537	0.000	299933	0	8.608	N.D. #
11) L3 AR-1232-1	4.537	0.000	299933	0	10.527	N.D. #
12) L3 AR-1232-2	5.007	4.199	2375824	686302	177.273	92.654 #
13) L3 AR-1232-3	0.000	4.357	0	245225	N.D.	60.670 #
14) L3 AR-1232-4	5.449	4.446	2606296	419978	203.640	123.986 #
15) L3 AR-1232-5	0.000	4.641	0	394310	N.D.	111.227 #
16) L4 AR-1242-1	0.000	4.199	0	686302	N.D.	79.963 #
17) L4 AR-1242-2	0.000	4.199	0	686302	N.D.	51.809 #
18) L4 AR-1242-3	5.434	4.357	2299146	245225	77.609	34.186 #
19) L4 AR-1242-4	5.449	4.446	2606296	419978	109.864	62.240 #
20) L4 AR-1242-5	6.233	4.926	2135094	2589680	91.584	292.512 #
21) L5 AR-1248-1	0.000	4.199	0	686302	N.D.	102.728 #
22) L5 AR-1248-2	0.000	4.446	0	419978	N.D.	46.864 #
23) L5 AR-1248-3	5.772	4.446	463975	419978	13.549	45.438 #
24) L5 AR-1248-4	6.152	4.641	9986178	394310	265.346	36.002 #
25) L5 AR-1248-5	6.233	4.962	2135094	650685	59.357	58.706
26) L6 AR-1254-1	6.152	4.926	9986178	2589680	236.587	131.233 #
27) L6 AR-1254-2	6.365	5.056	5441973	1039790	85.008	63.358 #
28) L6 AR-1254-3	6.716	5.456	2279873	444217	34.767	17.558 #
29) L6 AR-1254-4	6.976	5.659	1826098	456524	37.911	27.821 #
30) L6 AR-1254-5	0.000	5.990	0	896147	N.D.	42.625 #
32) L7 AR-1260-2	7.123	5.758	5236621	914110	109.331	50.635 #

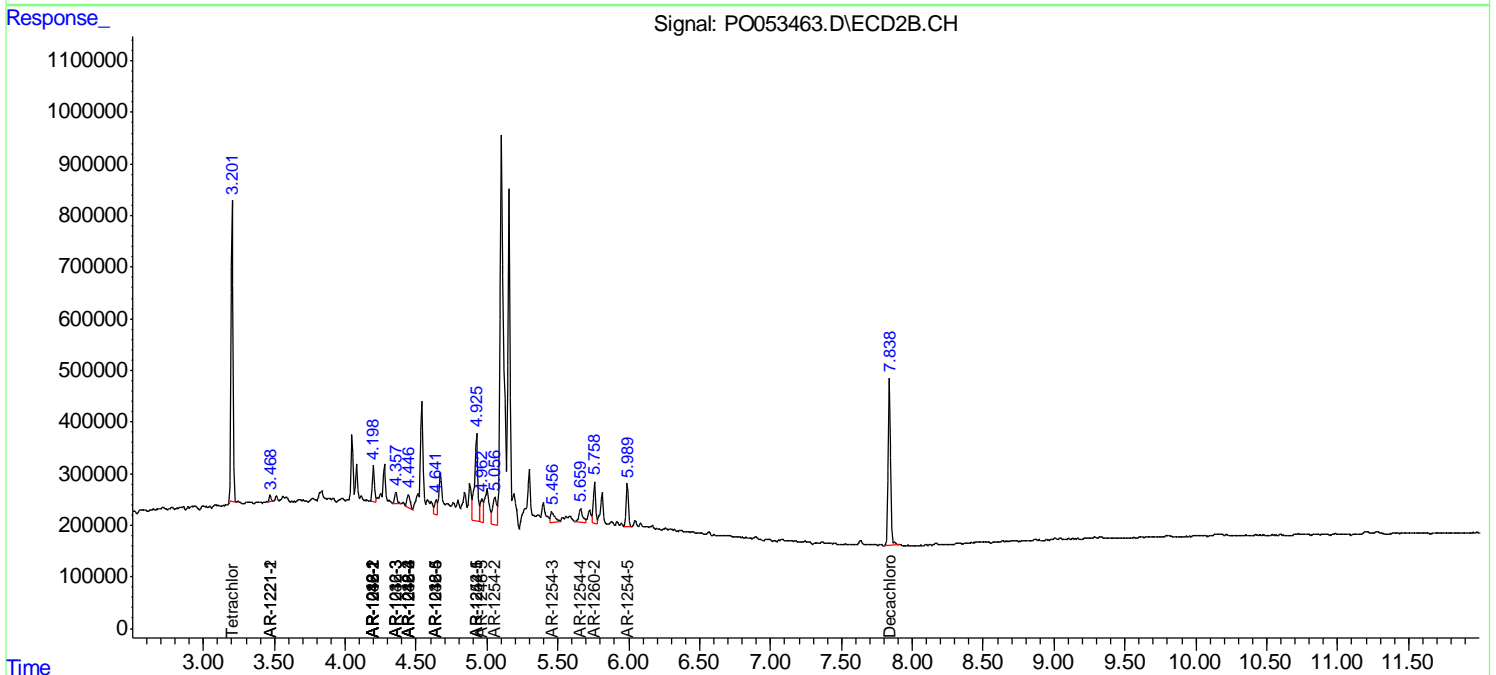
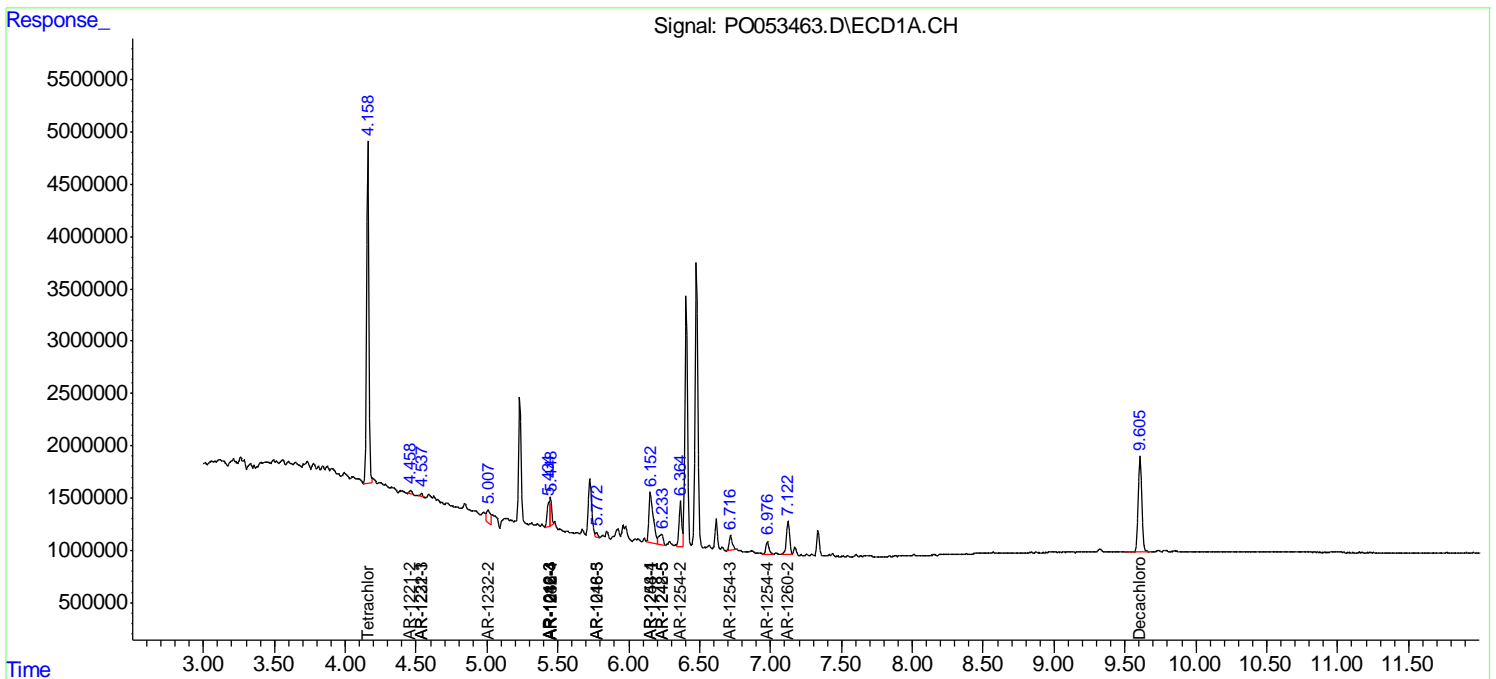
(f)=RT Delta > 1/2 Window (#)=Amounts differ by > 25% (m)=manual int.

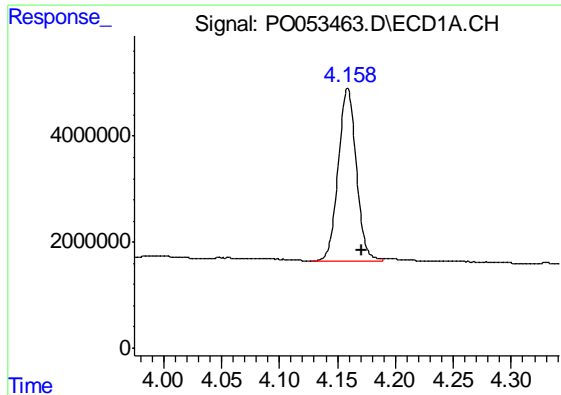
Data Path : Z:\pestpcbsrv\HPCHEM1\ECD_O\Data\PO011619\
Data File : PO053463.D
Signal(s) : Signal #1: ECD1A.CH Signal #2: ECD2B.CH
Acq On : 16 Jan 2019 15:33
Operator : SM/SJ
Sample : K1010-03
Misc :
ALS Vial : 6 Sample Multiplier: 1

Instrument :
ECD_O
ClientSampleId :
OK-01-011519-A

Integration File signal 1: autoint1.e
Integration File signal 2: autoint2.e
Quant Time: Jan 16 21:50:24 2019
Quant Method : Z:\pestpcbsrv\HPCHEM1\ECD_O\methods\PO010819.M
Quant Title : GC EXTRACTABLES
QLast Update : Wed Jan 09 03:34:05 2019
Response via : Initial Calibration
Integrator: ChemStation 6890 Scale Mode: Small noise peaks clipped

Volume Inj. : 2 µl
Signal #1 Phase : ZB-MR1 Signal #2 Phase: ZB-MR2
Signal #1 Info : 30Mx0.32mmx 0.50µ Signal #2 Info : 30M x 0.32mm x 0.25µm

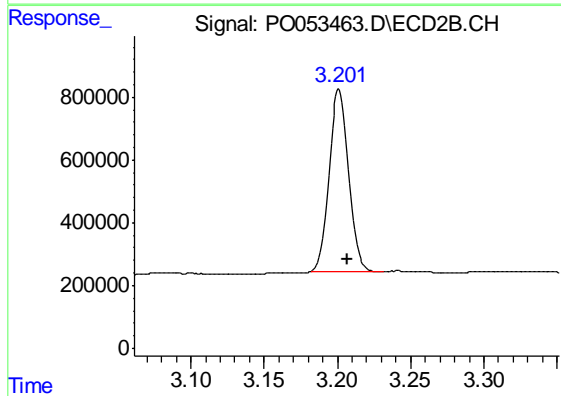




#1 Tetrachloro-m-xylene

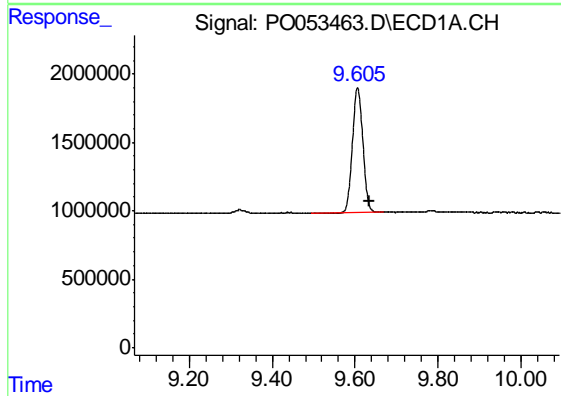
R.T.: 4.159 min
 Delta R.T.: -0.012 min
 Response: 35535874
 Conc: 26.59 ng/ml

Instrument :
 ECD_O
 ClientSampleId :
 OK-01-011519-A



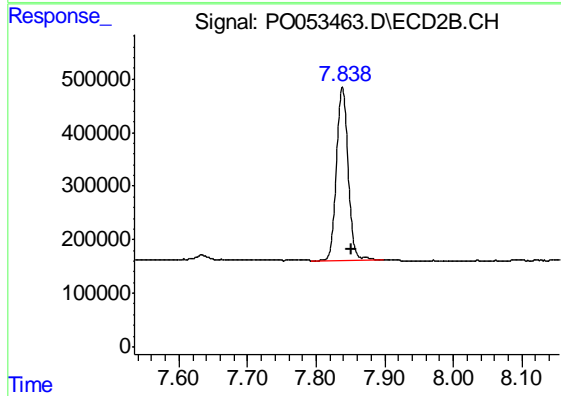
#1 Tetrachloro-m-xylene

R.T.: 3.201 min
 Delta R.T.: -0.006 min
 Response: 5334705
 Conc: 21.34 ng/ml



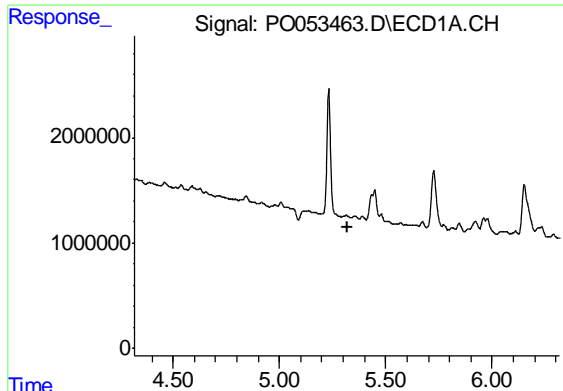
#2 Decachlorobiphenyl

R.T.: 9.606 min
 Delta R.T.: -0.028 min
 Response: 16040605
 Conc: 20.31 ng/ml



#2 Decachlorobiphenyl

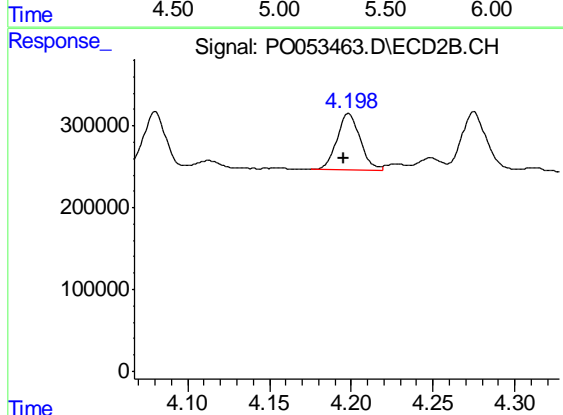
R.T.: 7.838 min
 Delta R.T.: -0.013 min
 Response: 3815451
 Conc: 16.66 ng/ml



#3 AR-1016-1

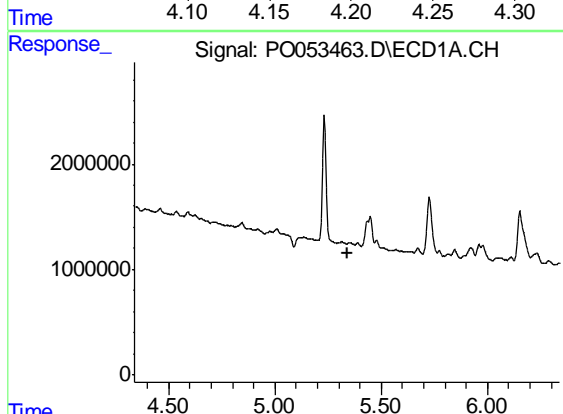
R.T.: 0.000 min
 Exp R.T. : 5.318 min
 Response: 0
 Conc: N.D.

Instrument :
 ECD_O
 ClientSampleId :
 OK-01-011519-A



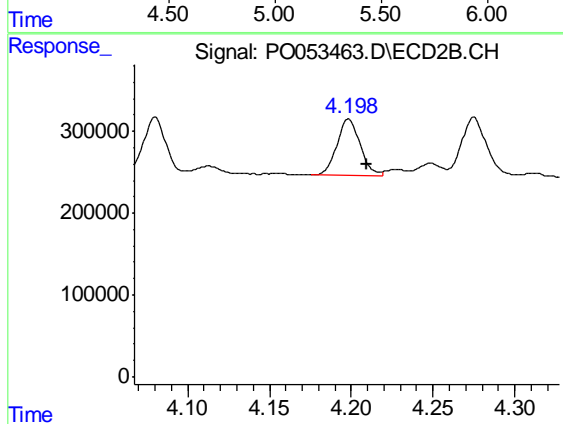
#3 AR-1016-1

R.T.: 4.199 min
 Delta R.T.: 0.003 min
 Response: 686302
 Conc: 69.61 ng/ml



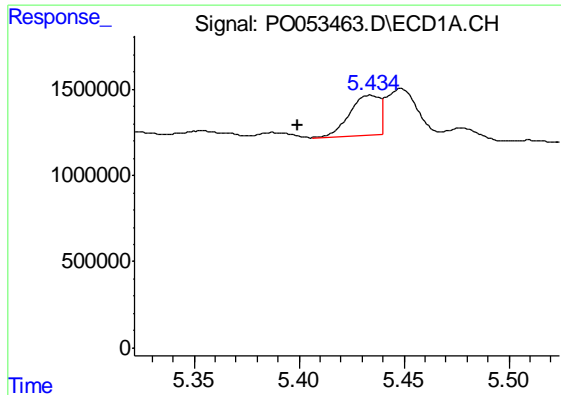
#4 AR-1016-2

R.T.: 0.000 min
 Exp R.T. : 5.339 min
 Response: 0
 Conc: N.D.



#4 AR-1016-2

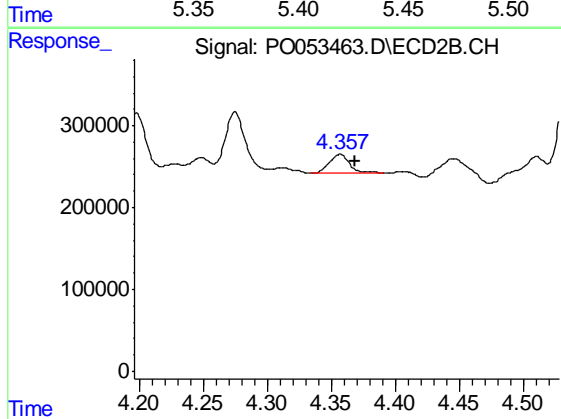
R.T.: 4.199 min
 Delta R.T.: -0.011 min
 Response: 686302
 Conc: 46.30 ng/ml



#5 AR-1016-3

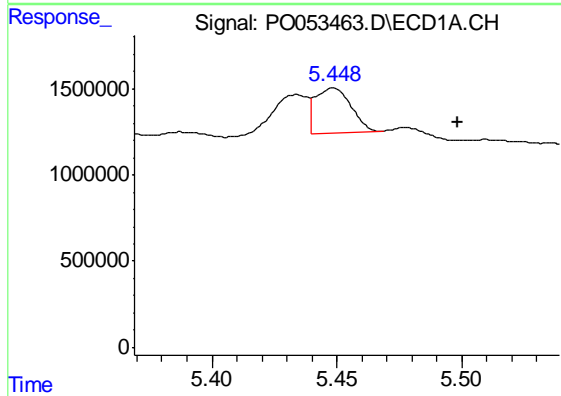
R.T.: 5.434 min
 Delta R.T.: 0.035 min
 Response: 2299146
 Conc: 71.79 ng/ml

Instrument :
 ECD_O
 ClientSampleId :
 OK-01-011519-A



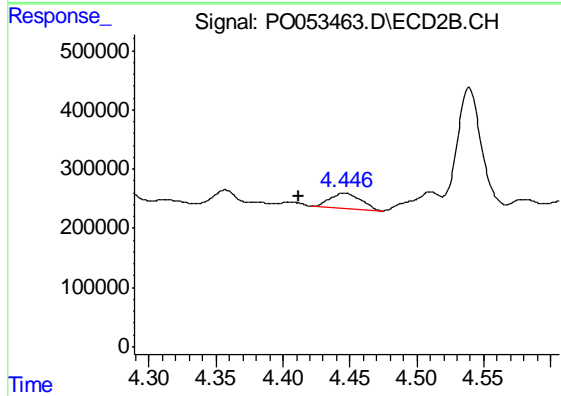
#5 AR-1016-3

R.T.: 4.357 min
 Delta R.T.: -0.012 min
 Response: 245225
 Conc: 30.47 ng/ml



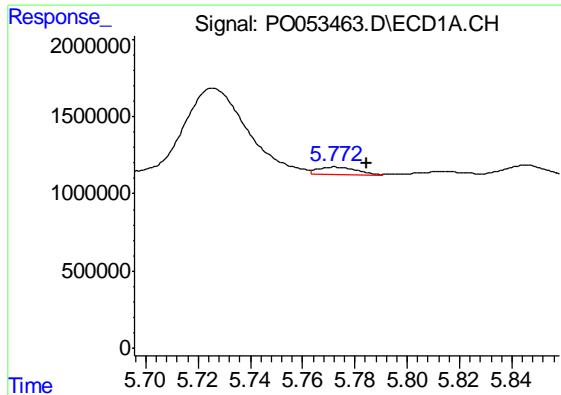
#6 AR-1016-4

R.T.: 5.449 min
 Delta R.T.: -0.050 min
 Response: 2606296
 Conc: 100.94 ng/ml



#6 AR-1016-4

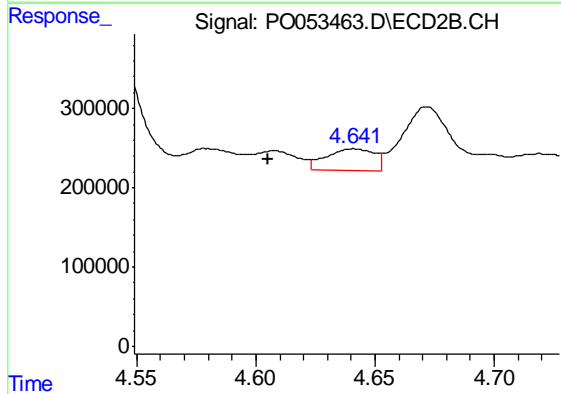
R.T.: 4.446 min
 Delta R.T.: 0.034 min
 Response: 419978
 Conc: 69.54 ng/ml



#7 AR-1016-5

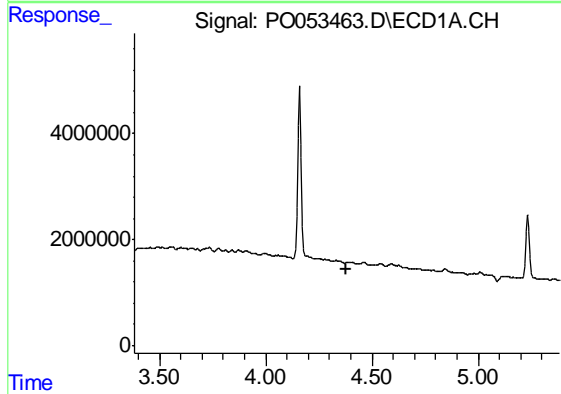
R.T.: 5.772 min
 Delta R.T.: -0.012 min
 Response: 463975
 Conc: 19.65 ng/ml

Instrument :
 ECD_O
 ClientSampleId :
 OK-01-011519-A



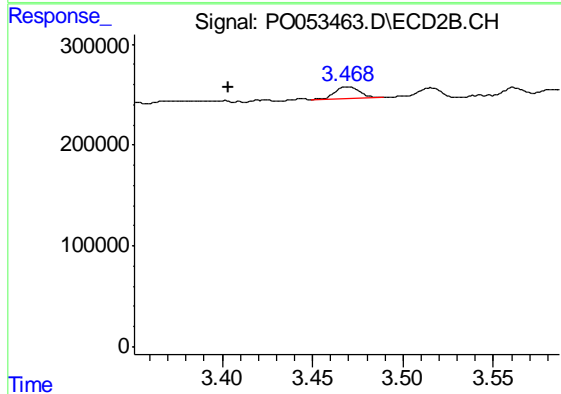
#7 AR-1016-5

R.T.: 4.641 min
 Delta R.T.: 0.036 min
 Response: 394310
 Conc: 50.12 ng/ml



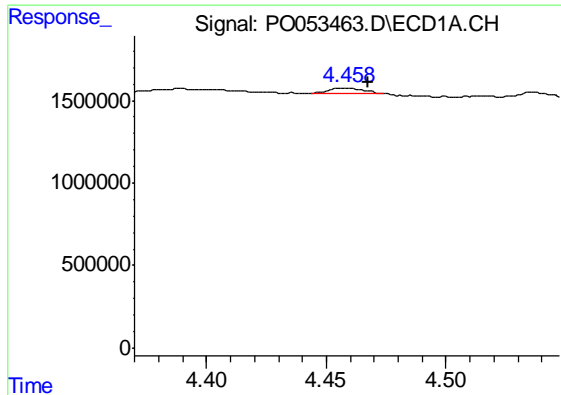
#8 AR-1221-1

R.T.: 0.000 min
 Exp R.T. : 4.382 min
 Response: 0
 Conc: N.D.



#8 AR-1221-1

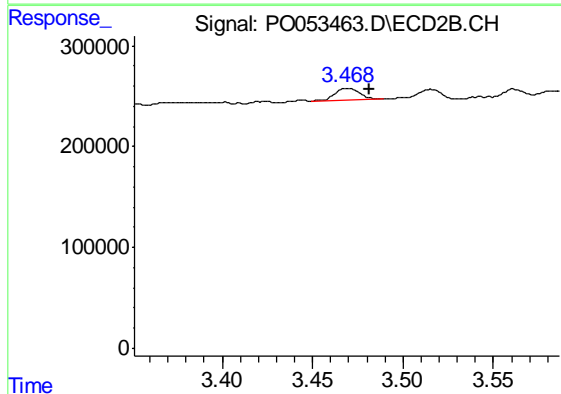
R.T.: 3.468 min
 Delta R.T.: 0.065 min
 Response: 119722
 Conc: 37.69 ng/ml



#9 AR-1221-2

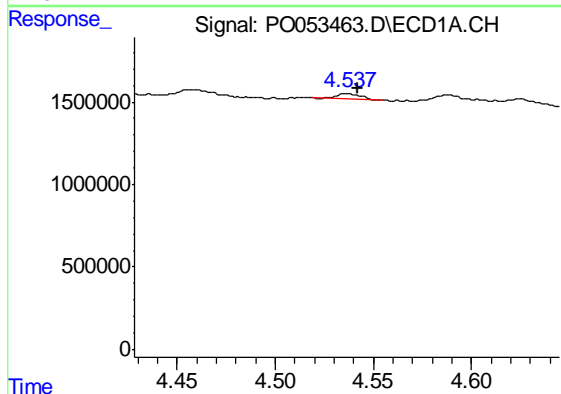
R.T.: 4.459 min
 Delta R.T.: -0.008 min
 Response: 338222
 Conc: 30.82 ng/ml

Instrument :
 ECD_O
 ClientSampleId :
 OK-01-011519-A



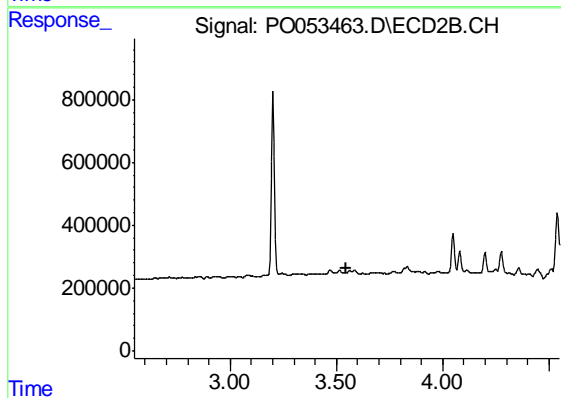
#9 AR-1221-2

R.T.: 3.468 min
 Delta R.T.: -0.013 min
 Response: 119722
 Conc: 49.76 ng/ml



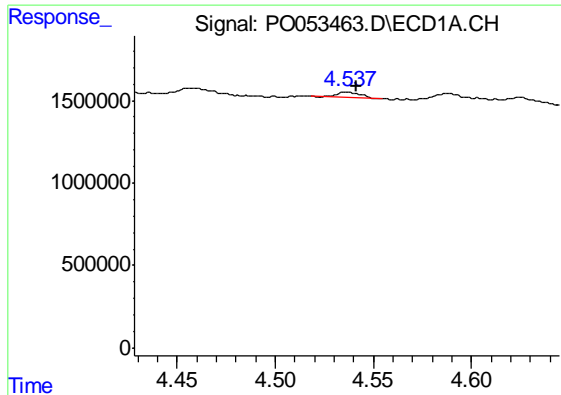
#10 AR-1221-3

R.T.: 4.537 min
 Delta R.T.: -0.005 min
 Response: 299933
 Conc: 8.61 ng/ml



#10 AR-1221-3

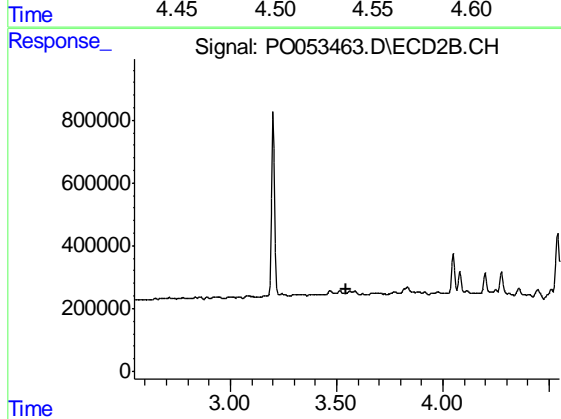
R.T.: 0.000 min
 Exp R.T. : 3.549 min
 Response: 0
 Conc: N.D.



#11 AR-1232-1

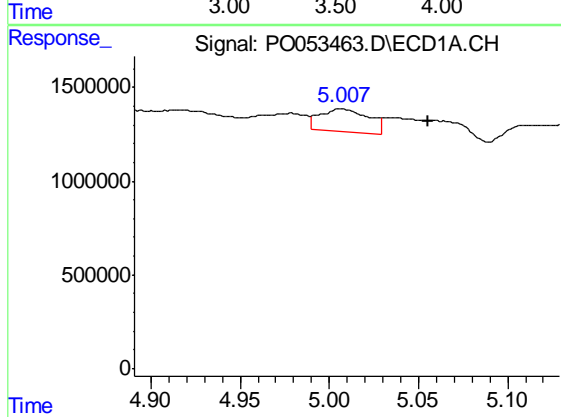
R.T.: 4.537 min
 Delta R.T.: -0.004 min
 Response: 299933
 Conc: 10.53 ng/ml

Instrument :
 ECD_O
 ClientSampleId :
 OK-01-011519-A



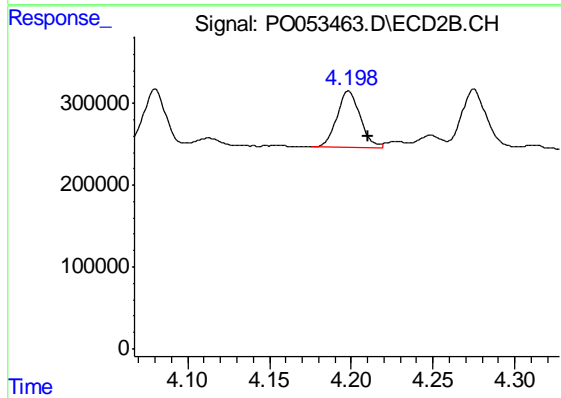
#11 AR-1232-1

R.T.: 0.000 min
 Exp R.T. : 3.548 min
 Response: 0
 Conc: N.D.



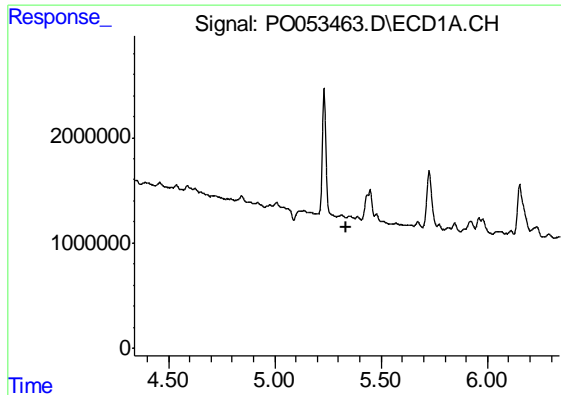
#12 AR-1232-2

R.T.: 5.007 min
 Delta R.T.: -0.049 min
 Response: 2375824
 Conc: 177.27 ng/ml



#12 AR-1232-2

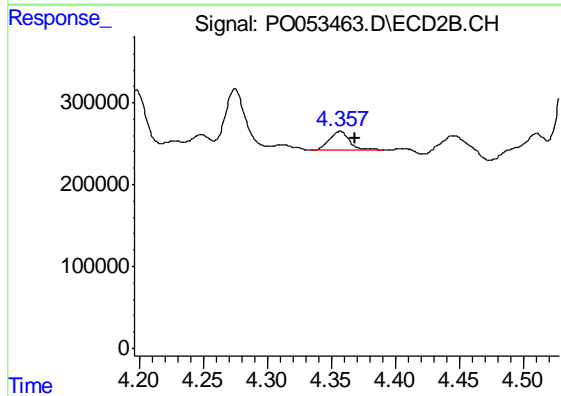
R.T.: 4.199 min
 Delta R.T.: -0.012 min
 Response: 686302
 Conc: 92.65 ng/ml



#13 AR-1232-3

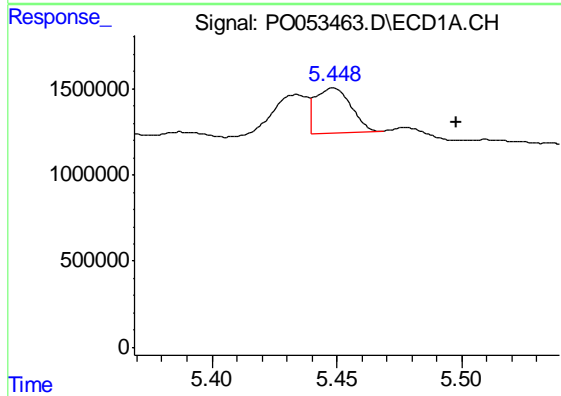
R.T.: 0.000 min
 Exp R.T. : 5.339 min
 Response: 0
 Conc: N.D.

Instrument :
 ECD_O
 ClientSampled :
 OK-01-011519-A



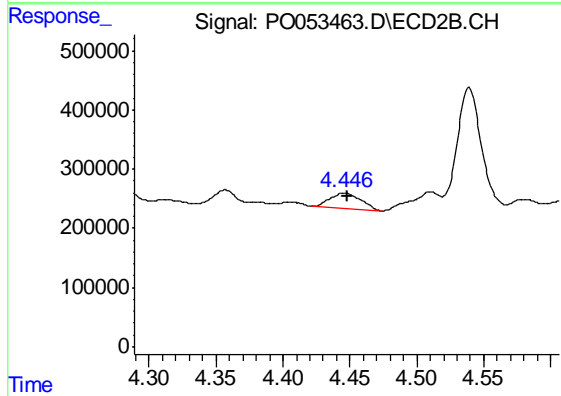
#13 AR-1232-3

R.T.: 4.357 min
 Delta R.T.: -0.012 min
 Response: 245225
 Conc: 60.67 ng/ml



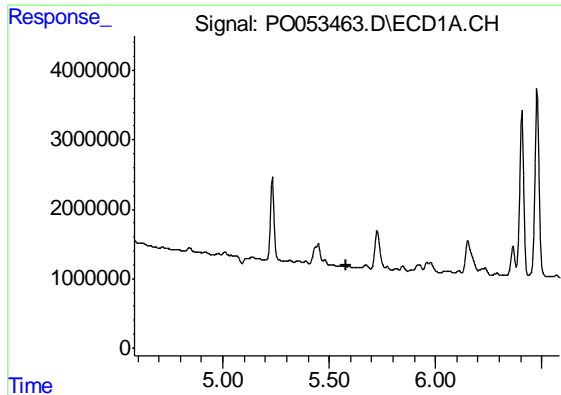
#14 AR-1232-4

R.T.: 5.449 min
 Delta R.T.: -0.049 min
 Response: 2606296
 Conc: 203.64 ng/ml



#14 AR-1232-4

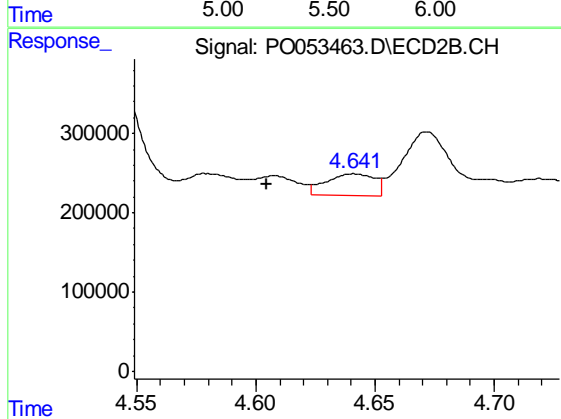
R.T.: 4.446 min
 Delta R.T.: -0.002 min
 Response: 419978
 Conc: 123.99 ng/ml



#15 AR-1232-5

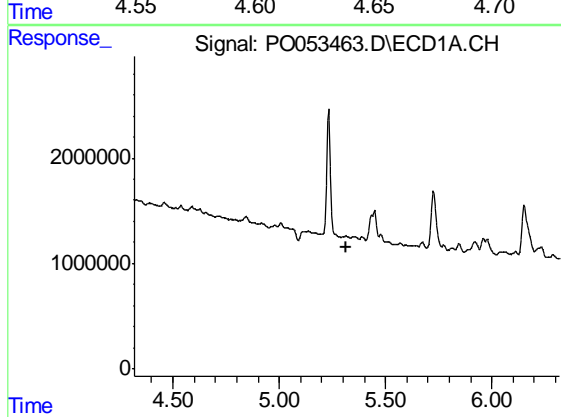
R.T.: 0.000 min
 Exp R.T. : 5.584 min
 Response: 0
 Conc: N.D.

Instrument :
 ECD_O
 ClientSampleId :
 OK-01-011519-A



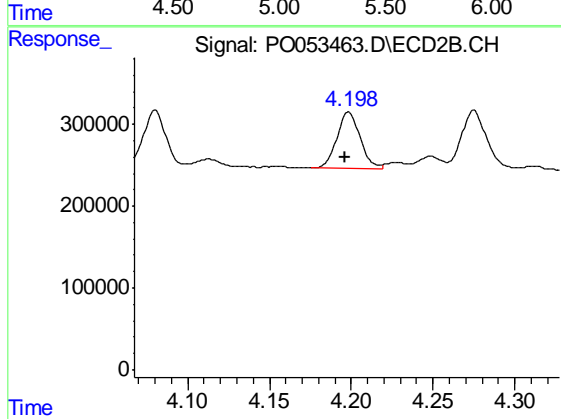
#15 AR-1232-5

R.T.: 4.641 min
 Delta R.T.: 0.036 min
 Response: 394310
 Conc: 111.23 ng/ml



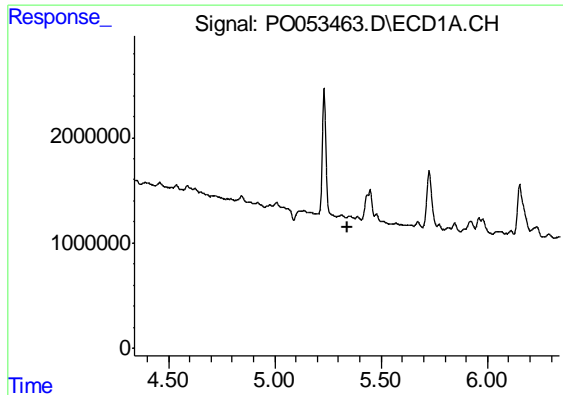
#16 AR-1242-1

R.T.: 0.000 min
 Exp R.T. : 5.318 min
 Response: 0
 Conc: N.D.



#16 AR-1242-1

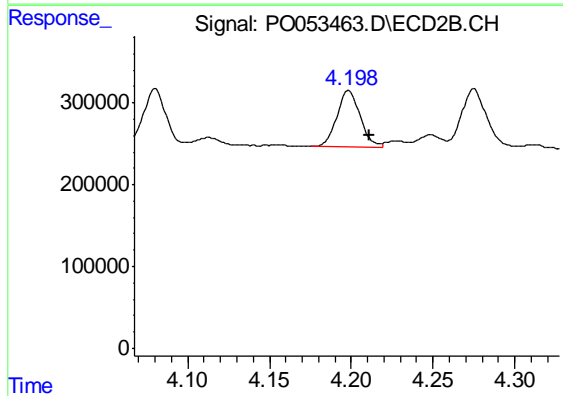
R.T.: 4.199 min
 Delta R.T.: 0.002 min
 Response: 686302
 Conc: 79.96 ng/ml



#17 AR-1242-2

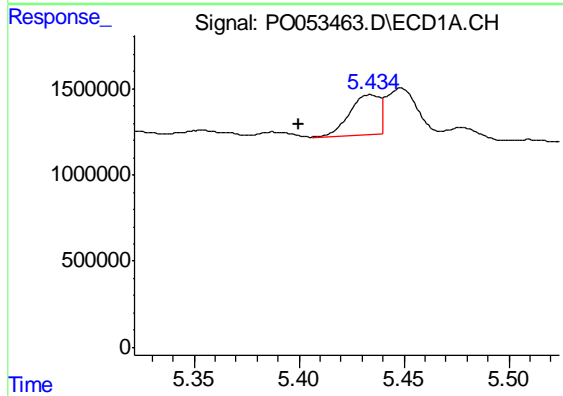
R.T.: 0.000 min
 Exp R.T. : 5.340 min
 Response: 0
 Conc: N.D.

Instrument :
 ECD_O
 ClientSampleId :
 OK-01-011519-A



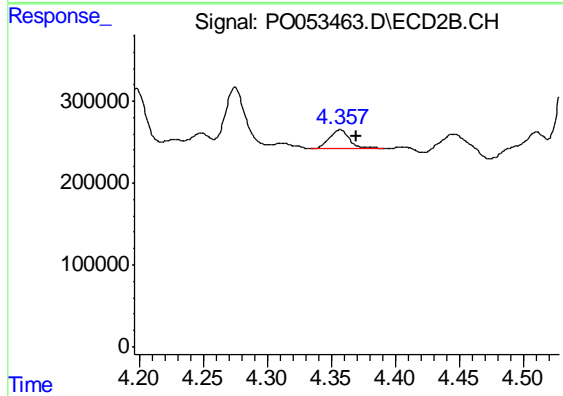
#17 AR-1242-2

R.T.: 4.199 min
 Delta R.T.: -0.012 min
 Response: 686302
 Conc: 51.81 ng/ml



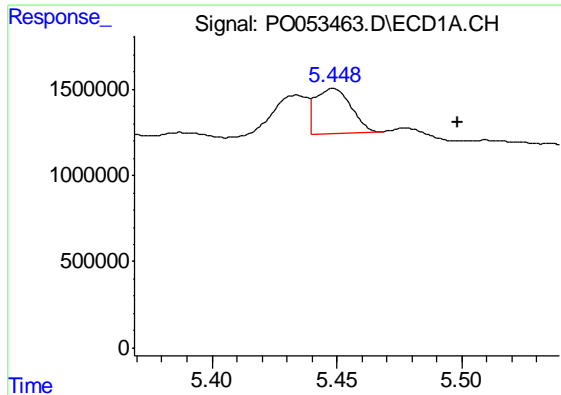
#18 AR-1242-3

R.T.: 5.434 min
 Delta R.T.: 0.034 min
 Response: 2299146
 Conc: 77.61 ng/ml



#18 AR-1242-3

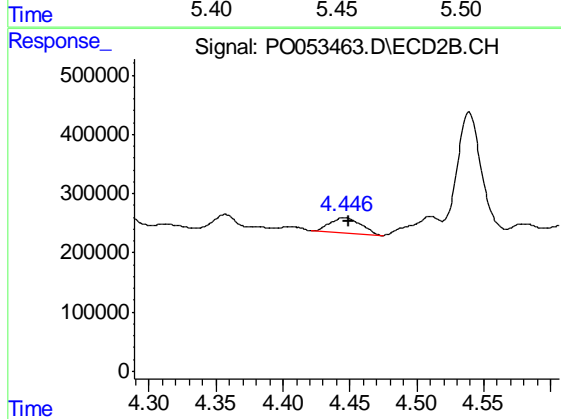
R.T.: 4.357 min
 Delta R.T.: -0.013 min
 Response: 245225
 Conc: 34.19 ng/ml



#19 AR-1242-4

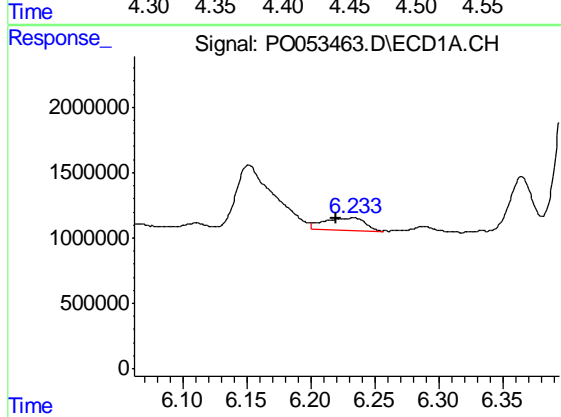
R.T.: 5.449 min
 Delta R.T.: -0.050 min
 Response: 2606296
 Conc: 109.86 ng/ml

Instrument :
 ECD_O
 ClientSampleId :
 OK-01-011519-A



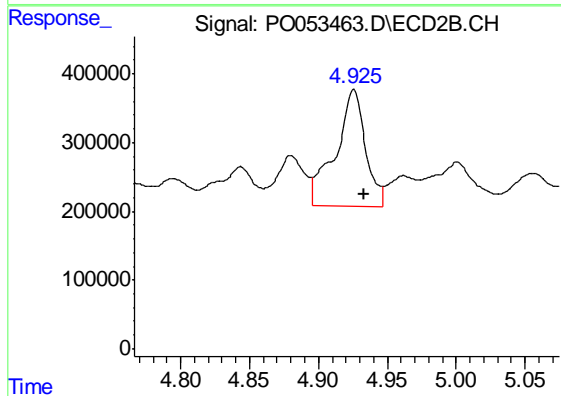
#19 AR-1242-4

R.T.: 4.446 min
 Delta R.T.: -0.003 min
 Response: 419978
 Conc: 62.24 ng/ml



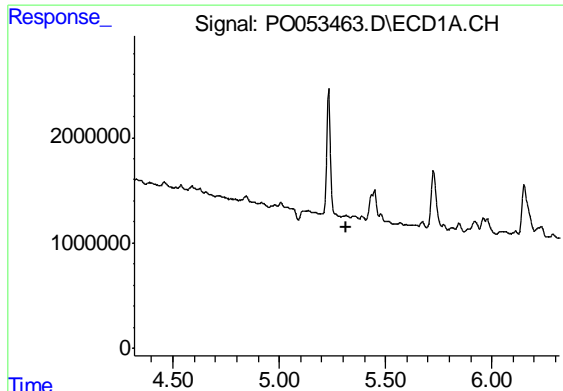
#20 AR-1242-5

R.T.: 6.233 min
 Delta R.T.: 0.013 min
 Response: 2135094
 Conc: 91.58 ng/ml



#20 AR-1242-5

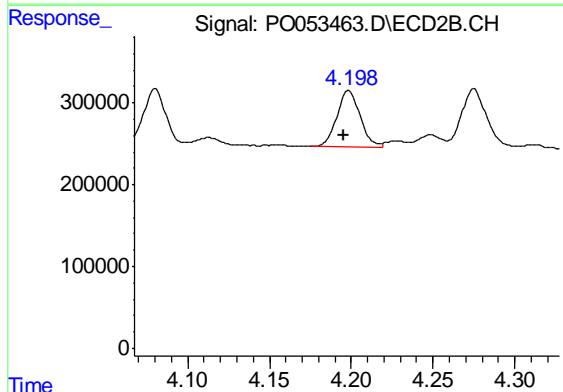
R.T.: 4.926 min
 Delta R.T.: -0.007 min
 Response: 2589680
 Conc: 292.51 ng/ml



#21 AR-1248-1

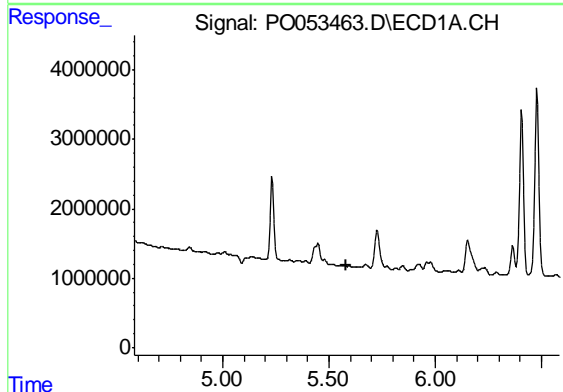
R.T.: 0.000 min
 Exp R.T. : 5.318 min
 Response: 0
 Conc: N.D.

Instrument :
 ECD_O
 ClientSampleId :
 OK-01-011519-A



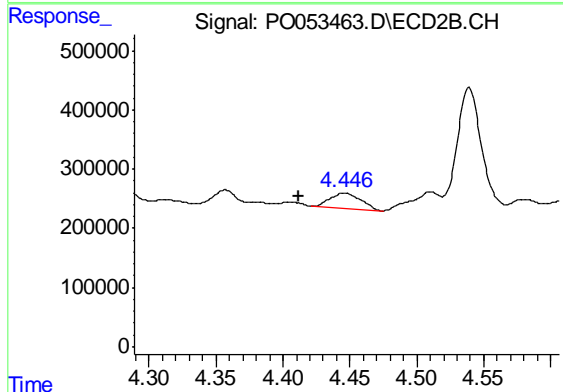
#21 AR-1248-1

R.T.: 4.199 min
 Delta R.T.: 0.003 min
 Response: 686302
 Conc: 102.73 ng/ml



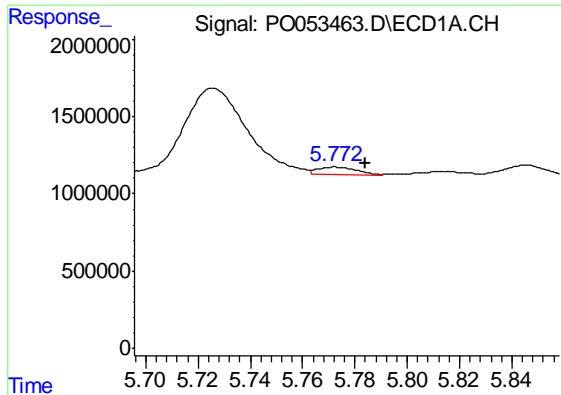
#22 AR-1248-2

R.T.: 0.000 min
 Exp R.T. : 5.584 min
 Response: 0
 Conc: N.D.



#22 AR-1248-2

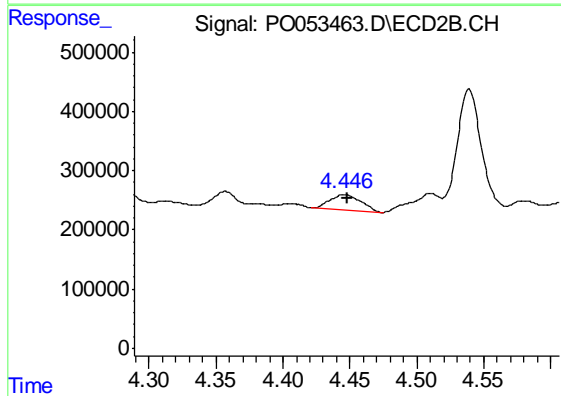
R.T.: 4.446 min
 Delta R.T.: 0.034 min
 Response: 419978
 Conc: 46.86 ng/ml



#23 AR-1248-3

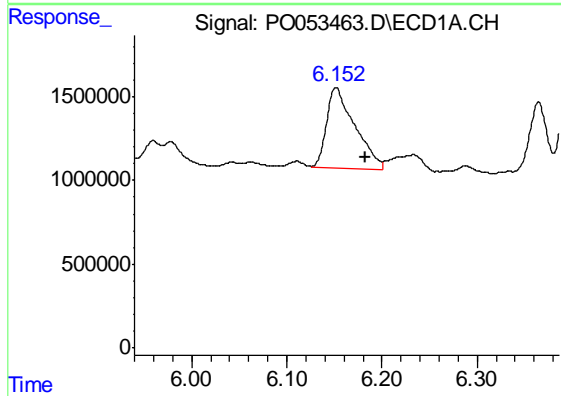
R.T.: 5.772 min
 Delta R.T.: -0.012 min
 Response: 463975
 Conc: 13.55 ng/ml

Instrument :
 ECD_O
 ClientSampleId :
 OK-01-011519-A



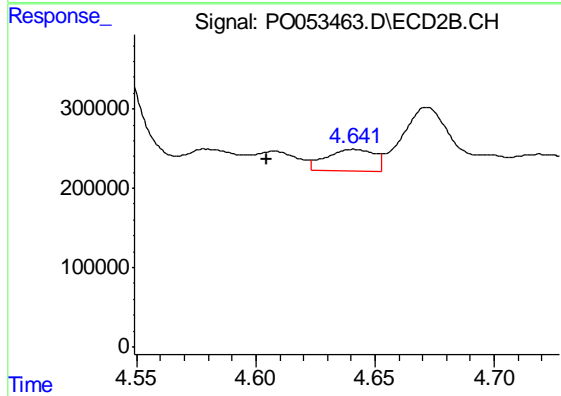
#23 AR-1248-3

R.T.: 4.446 min
 Delta R.T.: -0.002 min
 Response: 419978
 Conc: 45.44 ng/ml



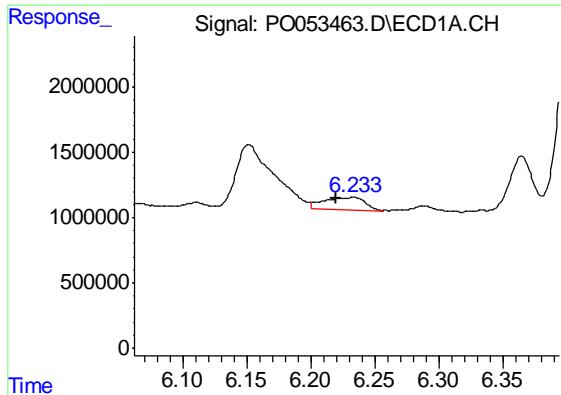
#24 AR-1248-4

R.T.: 6.152 min
 Delta R.T.: -0.031 min
 Response: 9986178
 Conc: 265.35 ng/ml



#24 AR-1248-4

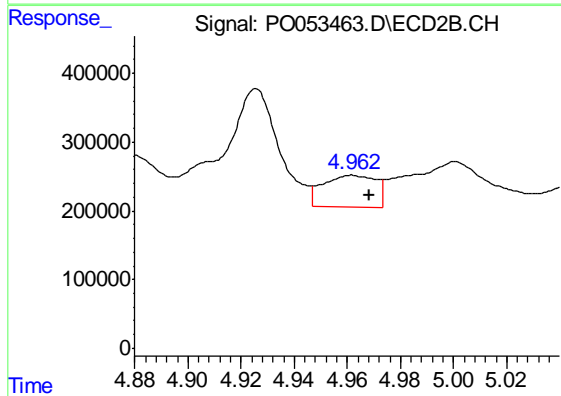
R.T.: 4.641 min
 Delta R.T.: 0.036 min
 Response: 394310
 Conc: 36.00 ng/ml



#25 AR-1248-5

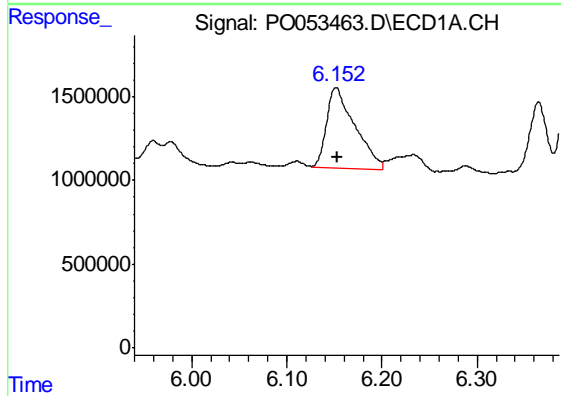
R.T.: 6.233 min
 Delta R.T.: 0.013 min
 Response: 2135094
 Conc: 59.36 ng/ml

Instrument :
 ECD_O
 ClientSampleId :
 OK-01-011519-A



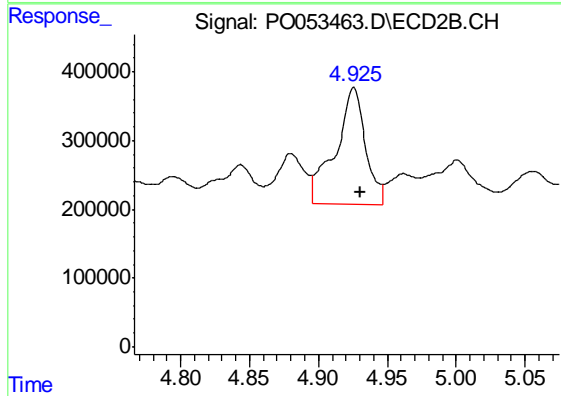
#25 AR-1248-5

R.T.: 4.962 min
 Delta R.T.: -0.006 min
 Response: 650685
 Conc: 58.71 ng/ml



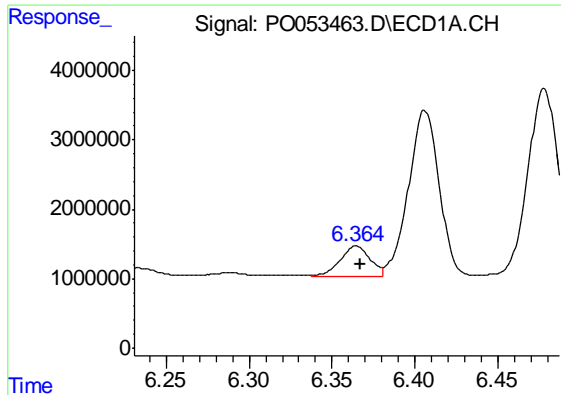
#26 AR-1254-1

R.T.: 6.152 min
 Delta R.T.: 0.000 min
 Response: 9986178
 Conc: 236.59 ng/ml



#26 AR-1254-1

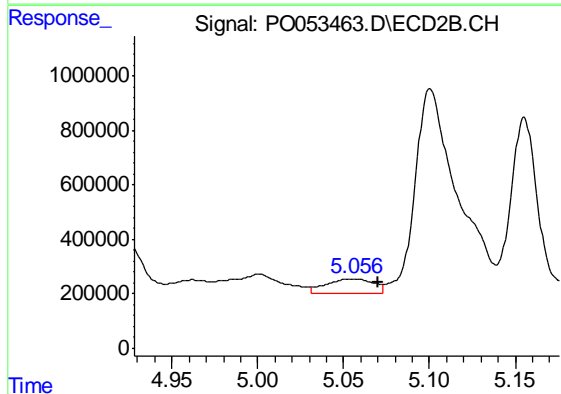
R.T.: 4.926 min
 Delta R.T.: -0.005 min
 Response: 2589680
 Conc: 131.23 ng/ml



#27 AR-1254-2

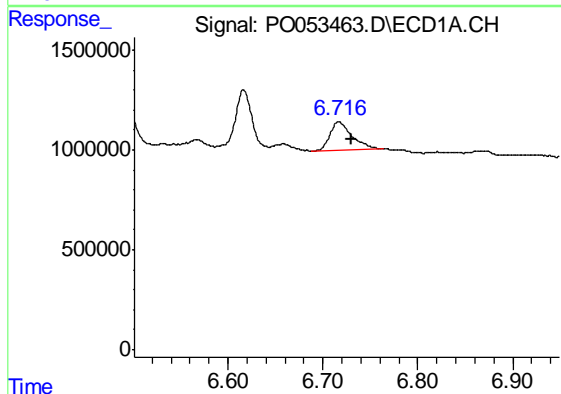
R.T.: 6.365 min
 Delta R.T.: -0.002 min
 Response: 5441973
 Conc: 85.01 ng/ml

Instrument :
 ECD_O
 ClientSampleId :
 OK-01-011519-A



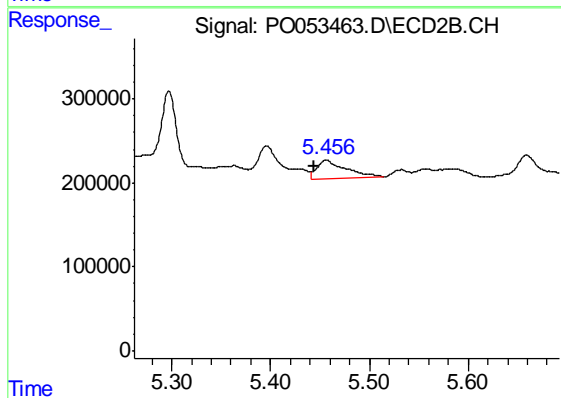
#27 AR-1254-2

R.T.: 5.056 min
 Delta R.T.: -0.014 min
 Response: 1039790
 Conc: 63.36 ng/ml



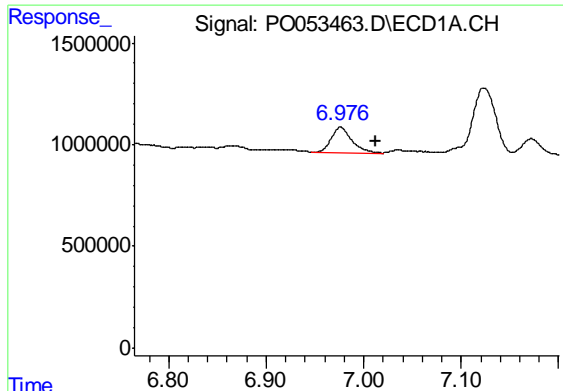
#28 AR-1254-3

R.T.: 6.716 min
 Delta R.T.: -0.014 min
 Response: 2279873
 Conc: 34.77 ng/ml



#28 AR-1254-3

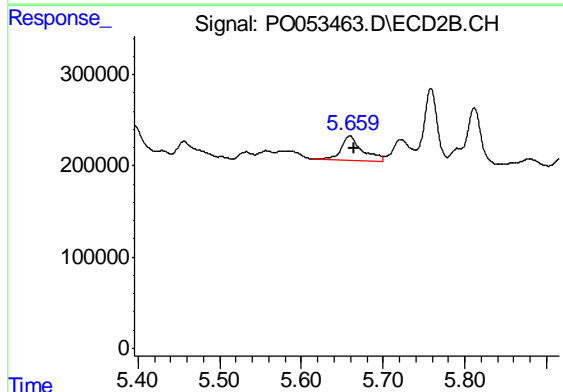
R.T.: 5.456 min
 Delta R.T.: 0.012 min
 Response: 444217
 Conc: 17.56 ng/ml



#29 AR-1254-4

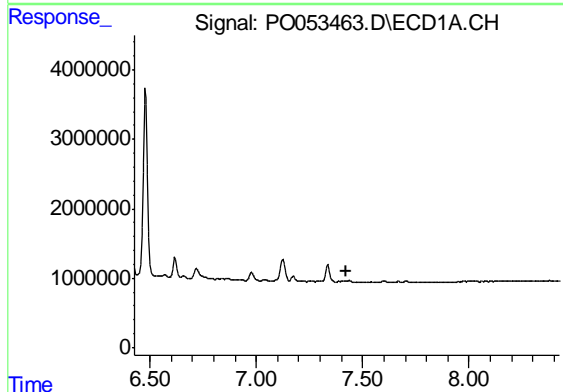
R.T.: 6.976 min
Delta R.T.: -0.036 min
Response: 1826098
Conc: 37.91 ng/ml

Instrument :
ECD_O
ClientSampleId :
OK-01-011519-A



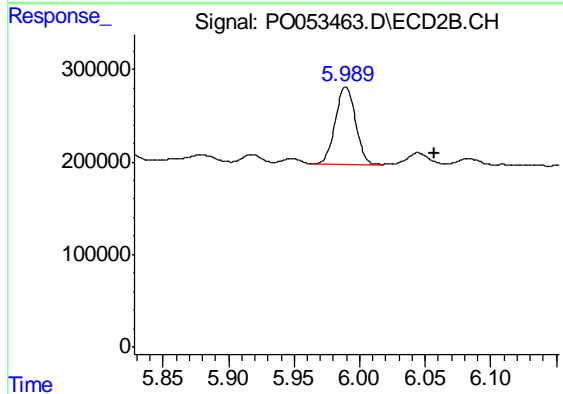
#29 AR-1254-4

R.T.: 5.659 min
Delta R.T.: -0.006 min
Response: 456524
Conc: 27.82 ng/ml



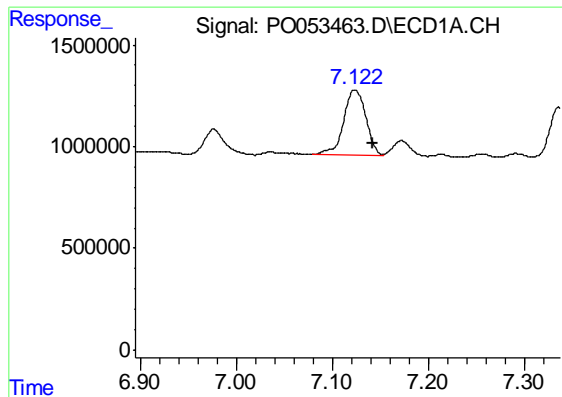
#30 AR-1254-5

R.T.: 0.000 min
Exp R.T. : 7.426 min
Response: 0
Conc: N.D.



#30 AR-1254-5

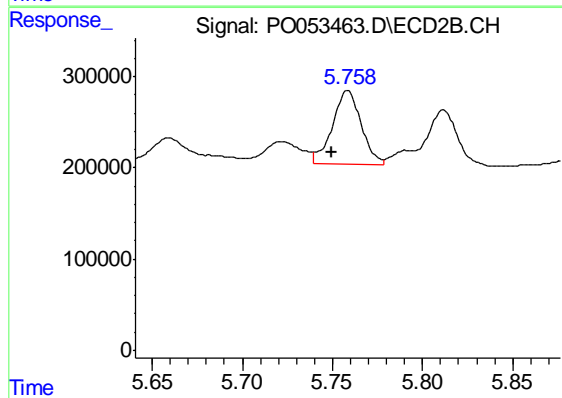
R.T.: 5.990 min
Delta R.T.: -0.067 min
Response: 896147
Conc: 42.62 ng/ml



#32 AR-1260-2

R.T.: 7.123 min
Delta R.T.: -0.019 min
Response: 5236621
Conc: 109.33 ng/ml

Instrument :
ECD_O
ClientSampleId :
OK-01-011519-A



#32 AR-1260-2

R.T.: 5.758 min
Delta R.T.: 0.009 min
Response: 914110
Conc: 50.63 ng/ml