

Data Path : Z:\pestpcbsrv\HPCHEM1\ECD_0\Data\P0011620\
 Data File : P0065549.D
 Signal(s) : Signal #1: ECD1A.CH Signal #2: ECD2B.CH
 Acq On : 16 Jan 2020 13:27
 Operator : DD\AJ
 Sample : L1108-06RE
 Misc :
 ALS Vial : 10 Sample Multiplier: 1

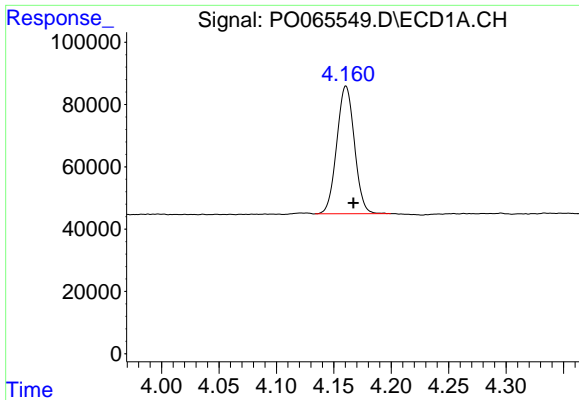
Instrument :
 ECD_0
 ClientSampled :
 INWOOD-BH-03-BRE

Integration File signal 1: autoint1.e
 Integration File signal 2: autoint2.e
 Quant Time: Jan 16 13:57:50 2020
 Quant Method : Z:\pestpcbsrv\HPCHEM1\ECD_0\methods\P0010420.M
 Quant Title : GC EXTRACTABLES
 QLast Update : Sat Jan 04 04:01:28 2020
 Response via : Initial Calibration
 Integrator: ChemStation 6890 Scale Mode: Small noise peaks clipped

Volume Inj. : 2 µl
 Signal #1 Phase : ZB-MR1 Signal #2 Phase: ZB-MR2
 Signal #1 Info : 30Mx0.32mmx 0.50µ Signal #2 Info : 30M x 0.32mm x 0.25µm

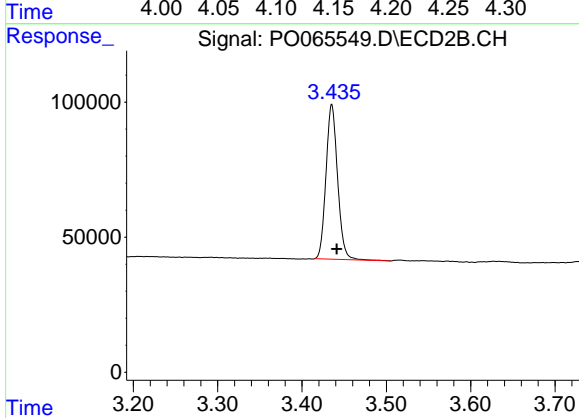
Compound	RT#1	RT#2	Resp#1	Resp#2	ng/ml	ng/ml
System Monitoring Compounds						
1) SA Tetrachlo...	4.161	3.435	439193	547528	24.052	24.891
2) SA Decachlor...	9.665	8.341	1859904	2194844	54.893	52.926
Target Compounds						
6) L1 AR-1016-4	0.000	4.789	0	28980	N.D.	43.347 #
7) L1 AR-1016-5	0.000	4.968	0	24993	N.D.	29.374 #
10) L2 AR-1221-3	0.000	3.846	0	16208	N.D.	25.157 #
11) L3 AR-1232-1	0.000	3.846	0	16208	N.D.	32.533 #
14) L3 AR-1232-4	0.000	4.789	0	28980	N.D.	108.405 #
15) L3 AR-1232-5	0.000	4.968	0	24993	N.D.	87.181 #
19) L4 AR-1242-4	0.000	4.789	0	28980	N.D.	55.447 #
20) L4 AR-1242-5	0.000	5.258	0	33364	N.D.	45.905 #
22) L5 AR-1248-2	0.000	4.789	0	28980	N.D.	37.772 #
23) L5 AR-1248-3	0.000	4.789	0	28980	N.D.	36.833 #
24) L5 AR-1248-4	0.000	4.968	0	24993	N.D.	26.075 #
25) L5 AR-1248-5	0.000	5.387	0	45037	N.D.	44.490 #
26) L6 AR-1254-1	0.000	5.258	0	33364	N.D.	23.030 #
27) L6 AR-1254-2	0.000	5.432	0	38507	N.D.	29.112 #
28) L6 AR-1254-3	0.000	5.842	0	24777	N.D.	10.995 #
29) L6 AR-1254-4	0.000	6.048	0	61505	N.D.	40.797 #
30) L6 AR-1254-5	0.000	6.468	0	11604	N.D.	5.213 #
31) L7 AR-1260-1	0.000	5.958	0	73966	N.D.	39.288 #
32) L7 AR-1260-2	0.000	6.145	0	161518	N.D.	66.482 #
33) L7 AR-1260-3	0.000	6.293	0	77736	N.D.	35.914 #
34) L7 AR-1260-4	0.000	6.757	0	48603	N.D.	24.226 #
35) L7 AR-1260-5	0.000	7.005	0	42490	N.D.	8.583 #
37) L8 AR-1262-2	0.000	7.005	0	42490	N.D.	9.456 #
38) L8 AR-1262-3	8.319	7.283	189084	265484	83.062	157.740 #
39) L8 AR-1262-4	0.000	7.349	0	135387	N.D.	39.368 #
40) L8 AR-1262-5	0.000	7.839	0	30796	N.D.	18.060 #
41) L9 AR-1268-1	8.319	7.283	189084	265484	46.478	49.989
42) L9 AR-1268-2	0.000	7.349	0	135387	N.D.	26.653 #
43) L9 AR-1268-3	8.609	7.550	575048	719601	178.668	169.405
44) L9 AR-1268-4	0.000	7.839	0	30796	N.D.	15.559 #
45) L9 AR-1268-5	9.368	8.110	1490712	1755703	134.546	122.112

(f)=RT Delta > 1/2 Window (#)=Amounts differ by > 25% (m)=manual int.

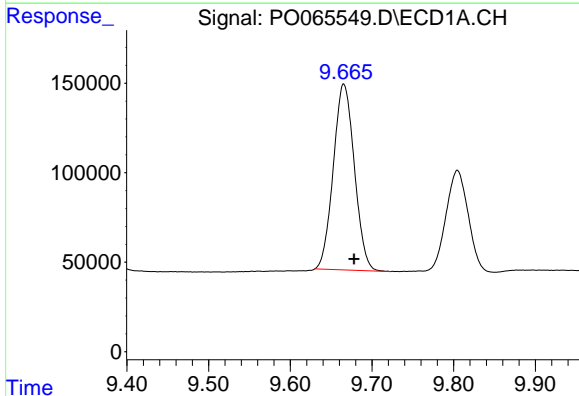


#1 Tetrachloro-m-xylene
 R.T.: 4.161 min
 Delta R.T.: -0.006 min
 Response: 439193
 Conc: 24.05 ng/ml

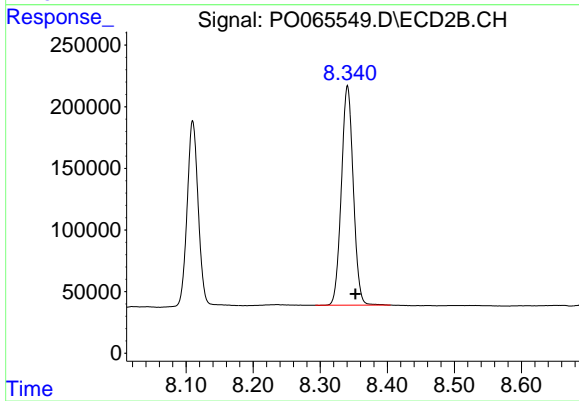
Instrument :
 ECD_O
ClientSampled :
 INWOOD-BH-03-BRE



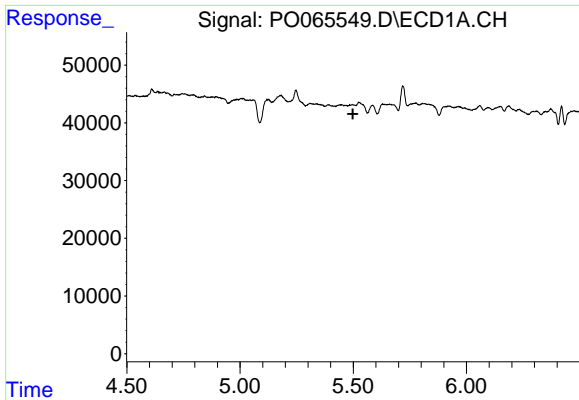
#1 Tetrachloro-m-xylene
 R.T.: 3.435 min
 Delta R.T.: -0.006 min
 Response: 547528
 Conc: 24.89 ng/ml



#2 Decachlorobiphenyl
 R.T.: 9.665 min
 Delta R.T.: -0.013 min
 Response: 1859904
 Conc: 54.89 ng/ml



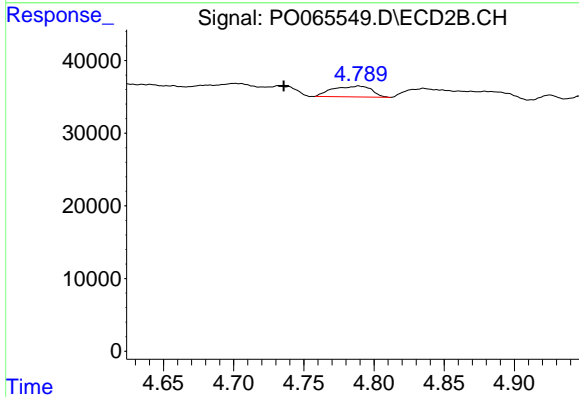
#2 Decachlorobiphenyl
 R.T.: 8.341 min
 Delta R.T.: -0.012 min
 Response: 2194844
 Conc: 52.93 ng/ml



#6 AR-1016-4

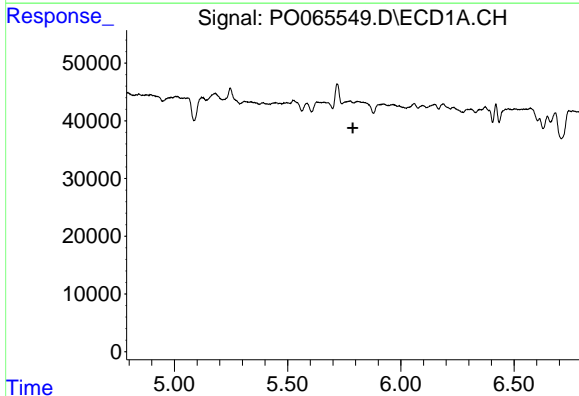
R.T.: 0.000 min
 Exp R.T. : 5.498 min
 Response: 0
 Conc: N.D.

Instrument :
 ECD_O
 ClientSampleId :
 INWOOD-BH-03-BRE



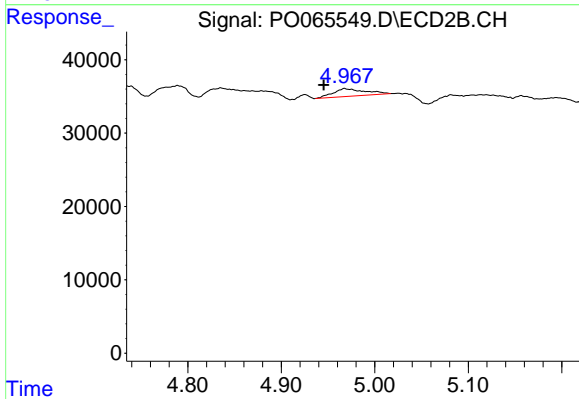
#6 AR-1016-4

R.T.: 4.789 min
 Delta R.T.: 0.054 min
 Response: 28980
 Conc: 43.35 ng/ml



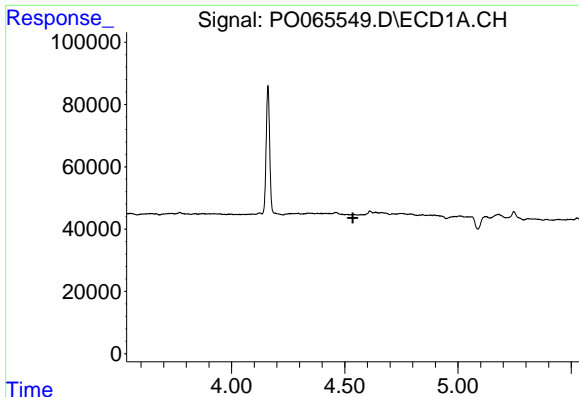
#7 AR-1016-5

R.T.: 0.000 min
 Exp R.T. : 5.788 min
 Response: 0
 Conc: N.D.



#7 AR-1016-5

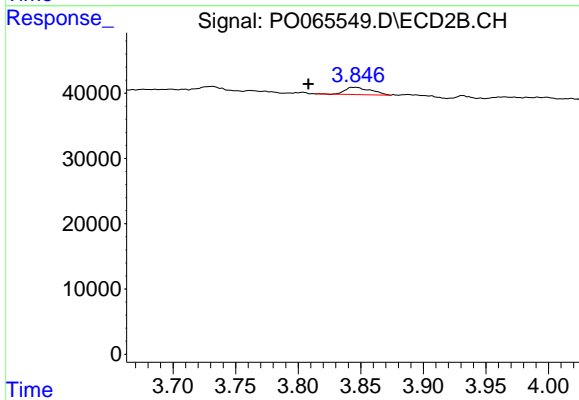
R.T.: 4.968 min
 Delta R.T.: 0.022 min
 Response: 24993
 Conc: 29.37 ng/ml



#10 AR-1221-3

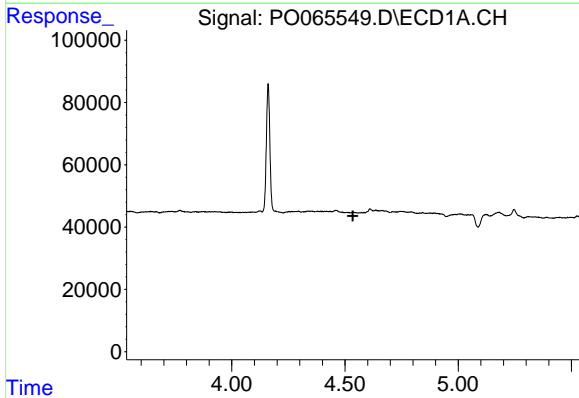
R.T.: 0.000 min
 Exp R.T. : 4.536 min
 Response: 0
 Conc: N.D.

Instrument :
 ECD_O
 ClientSampleId :
 INWOOD-BH-03-BRE



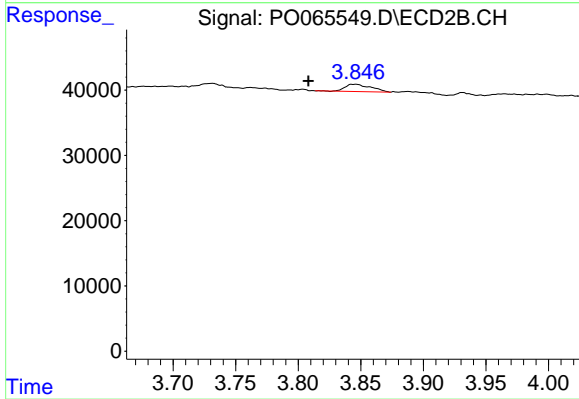
#10 AR-1221-3

R.T.: 3.846 min
 Delta R.T.: 0.038 min
 Response: 16208
 Conc: 25.16 ng/ml



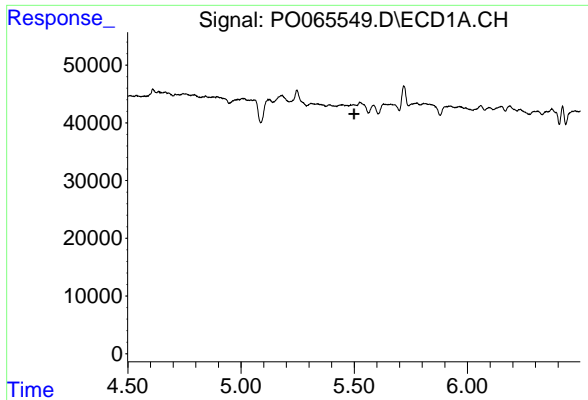
#11 AR-1232-1

R.T.: 0.000 min
 Exp R.T. : 4.535 min
 Response: 0
 Conc: N.D.



#11 AR-1232-1

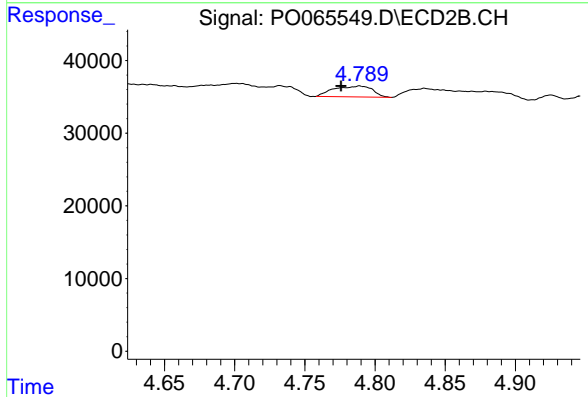
R.T.: 3.846 min
 Delta R.T.: 0.038 min
 Response: 16208
 Conc: 32.53 ng/ml



#14 AR-1232-4

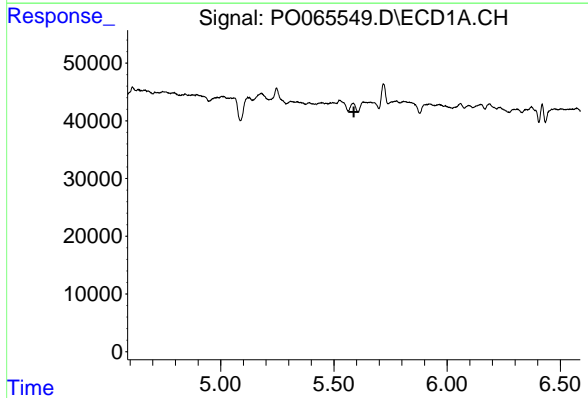
R.T.: 0.000 min
 Exp R.T. : 5.499 min
 Response: 0
 Conc: N.D.

Instrument :
 ECD_O
 ClientSampleId :
 INWOOD-BH-03-BRE



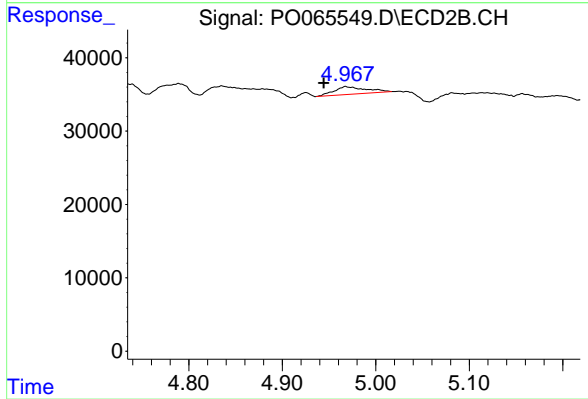
#14 AR-1232-4

R.T.: 4.789 min
 Delta R.T.: 0.013 min
 Response: 28980
 Conc: 108.40 ng/ml



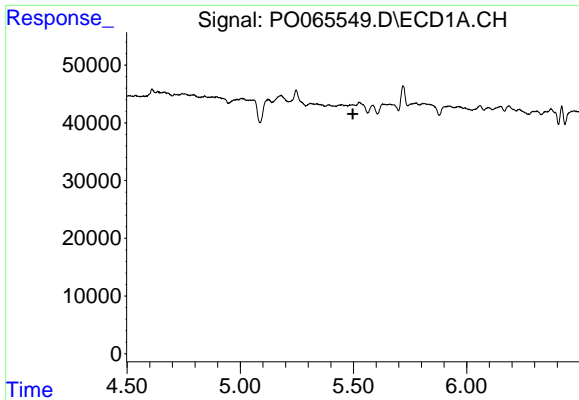
#15 AR-1232-5

R.T.: 0.000 min
 Exp R.T. : 5.588 min
 Response: 0
 Conc: N.D.



#15 AR-1232-5

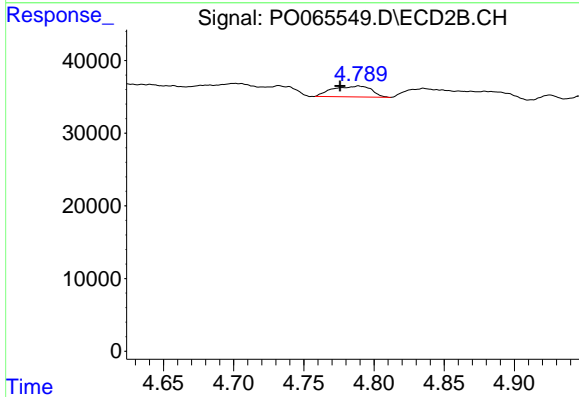
R.T.: 4.968 min
 Delta R.T.: 0.023 min
 Response: 24993
 Conc: 87.18 ng/ml



#19 AR-1242-4

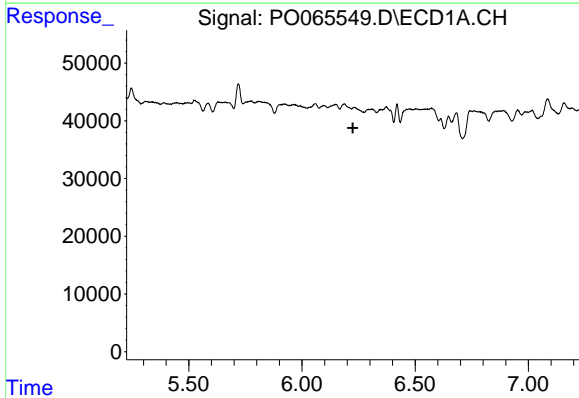
R.T.: 0.000 min
 Exp R.T. : 5.498 min
 Response: 0
 Conc: N.D.

Instrument :
 ECD_O
 ClientSampleId :
 INWOOD-BH-03-BRE



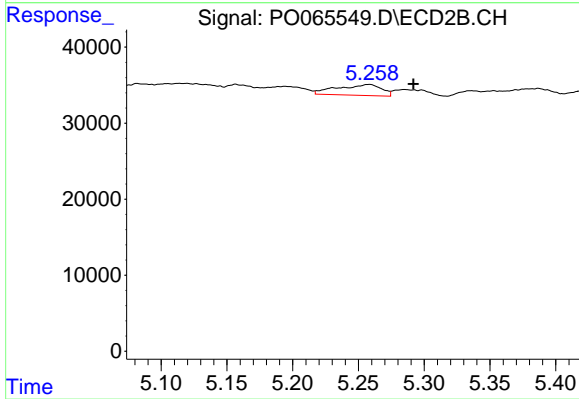
#19 AR-1242-4

R.T.: 4.789 min
 Delta R.T.: 0.013 min
 Response: 28980
 Conc: 55.45 ng/ml



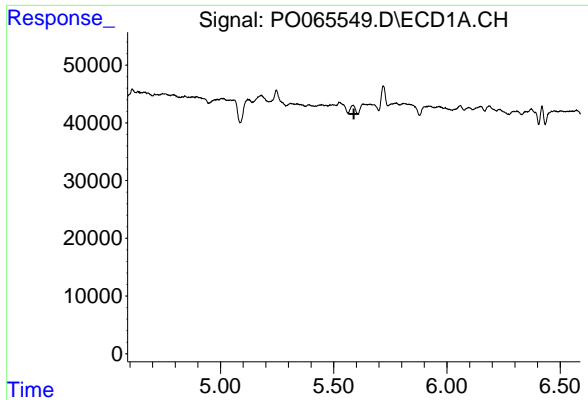
#20 AR-1242-5

R.T.: 0.000 min
 Exp R.T. : 6.225 min
 Response: 0
 Conc: N.D.



#20 AR-1242-5

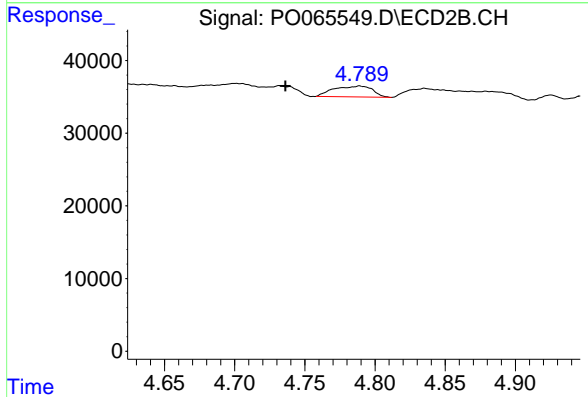
R.T.: 5.258 min
 Delta R.T.: -0.034 min
 Response: 33364
 Conc: 45.91 ng/ml



#22 AR-1248-2

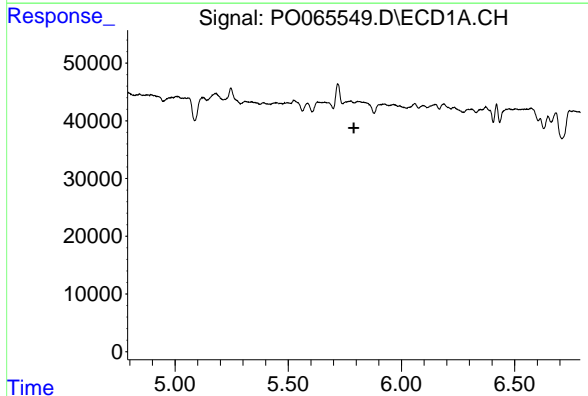
R.T.: 0.000 min
 Exp R.T. : 5.589 min
 Response: 0
 Conc: N.D.

Instrument :
 ECD_O
 ClientSampleId :
 INWOOD-BH-03-BRE



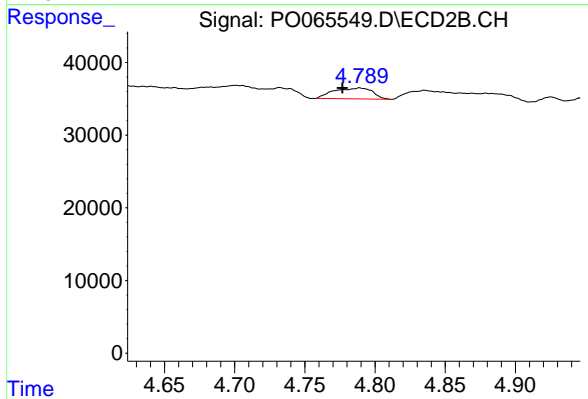
#22 AR-1248-2

R.T.: 4.789 min
 Delta R.T.: 0.053 min
 Response: 28980
 Conc: 37.77 ng/ml



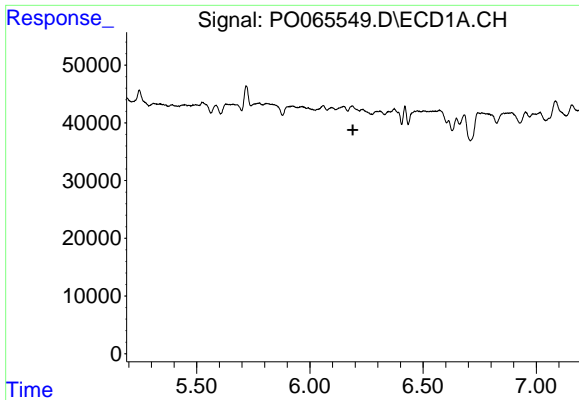
#23 AR-1248-3

R.T.: 0.000 min
 Exp R.T. : 5.790 min
 Response: 0
 Conc: N.D.



#23 AR-1248-3

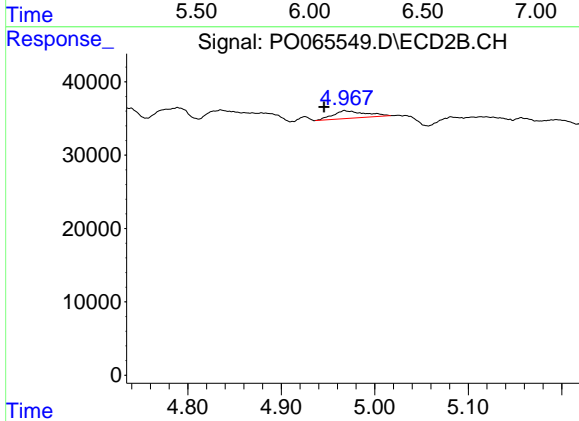
R.T.: 4.789 min
 Delta R.T.: 0.012 min
 Response: 28980
 Conc: 36.83 ng/ml



#24 AR-1248-4

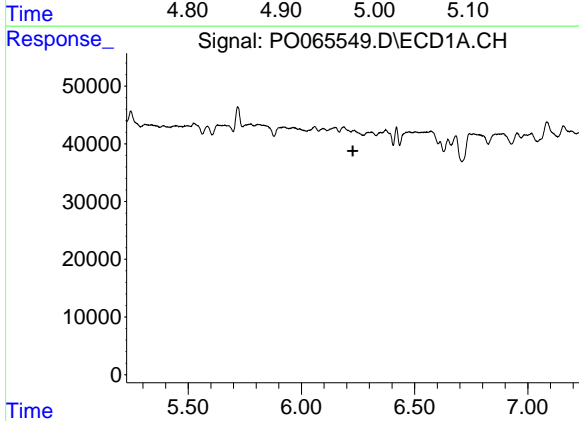
R.T.: 0.000 min
 Exp R.T. : 6.190 min
 Response: 0
 Conc: N.D.

Instrument :
 ECD_O
ClientSampleId :
 INWOOD-BH-03-BRE



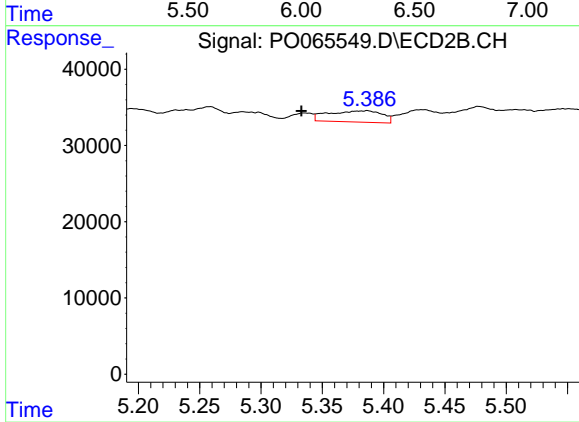
#24 AR-1248-4

R.T.: 4.968 min
 Delta R.T.: 0.022 min
 Response: 24993
 Conc: 26.08 ng/ml



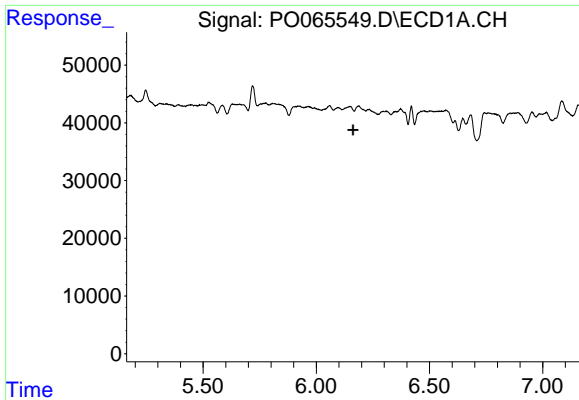
#25 AR-1248-5

R.T.: 0.000 min
 Exp R.T. : 6.227 min
 Response: 0
 Conc: N.D.



#25 AR-1248-5

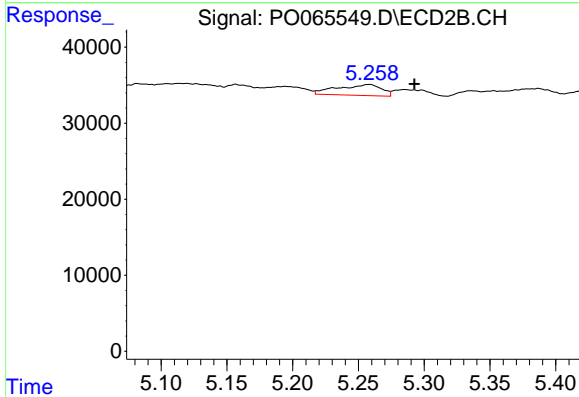
R.T.: 5.387 min
 Delta R.T.: 0.054 min
 Response: 45037
 Conc: 44.49 ng/ml



#26 AR-1254-1

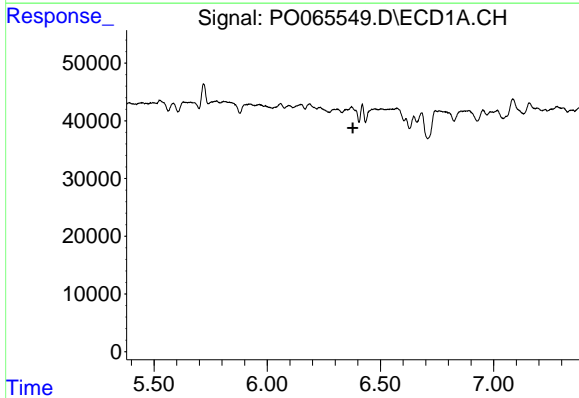
R.T.: 0.000 min
 Exp R.T. : 6.162 min
 Response: 0
 Conc: N.D.

Instrument :
 ECD_O
 ClientSampleId :
 INWOOD-BH-03-BRE



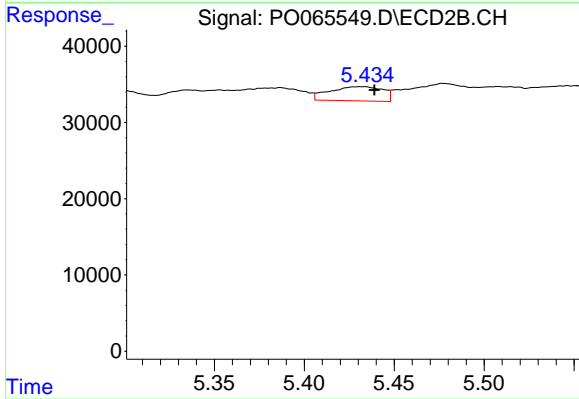
#26 AR-1254-1

R.T.: 5.258 min
 Delta R.T.: -0.034 min
 Response: 33364
 Conc: 23.03 ng/ml



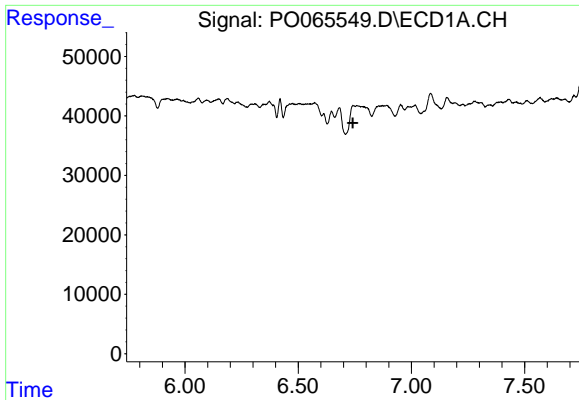
#27 AR-1254-2

R.T.: 0.000 min
 Exp R.T. : 6.378 min
 Response: 0
 Conc: N.D.



#27 AR-1254-2

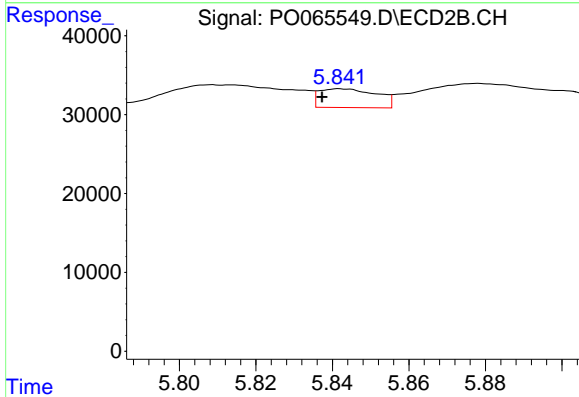
R.T.: 5.432 min
 Delta R.T.: -0.007 min
 Response: 38507
 Conc: 29.11 ng/ml



#28 AR-1254-3

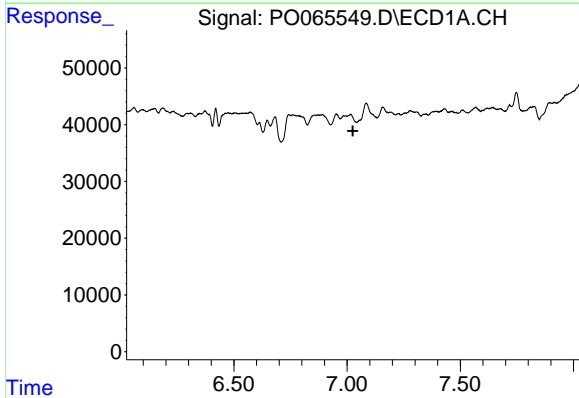
R.T.: 0.000 min
 Exp R.T.: 6.742 min
 Response: 0
 Conc: N.D.

Instrument :
 ECD_O
 ClientSampleId :
 INWOOD-BH-03-BRE



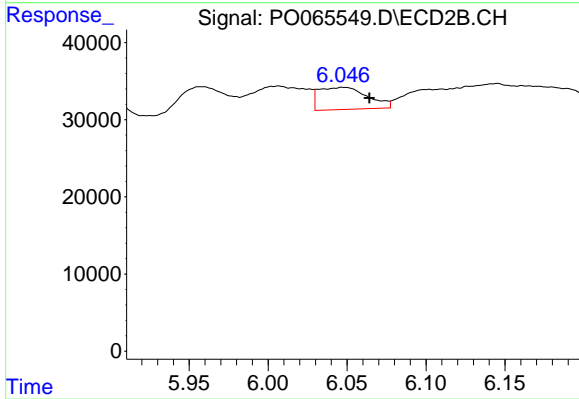
#28 AR-1254-3

R.T.: 5.842 min
 Delta R.T.: 0.005 min
 Response: 24777
 Conc: 10.99 ng/ml



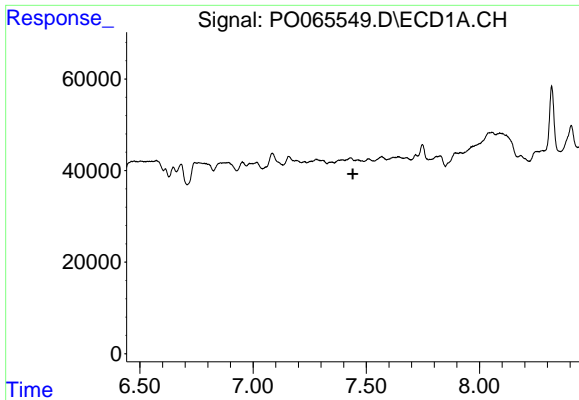
#29 AR-1254-4

R.T.: 0.000 min
 Exp R.T.: 7.026 min
 Response: 0
 Conc: N.D.



#29 AR-1254-4

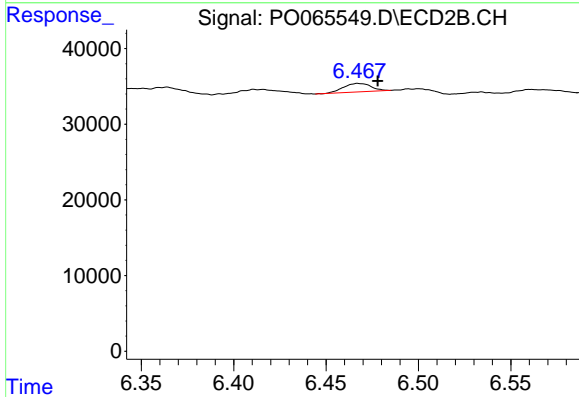
R.T.: 6.048 min
 Delta R.T.: -0.017 min
 Response: 61505
 Conc: 40.80 ng/ml



#30 AR-1254-5

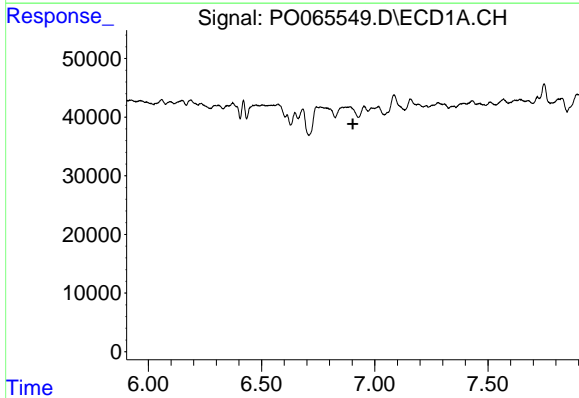
R.T.: 0.000 min
 Exp R.T. : 7.441 min
 Response: 0
 Conc: N.D.

Instrument :
 ECD_O
 ClientSampleId :
 INWOOD-BH-03-BRE



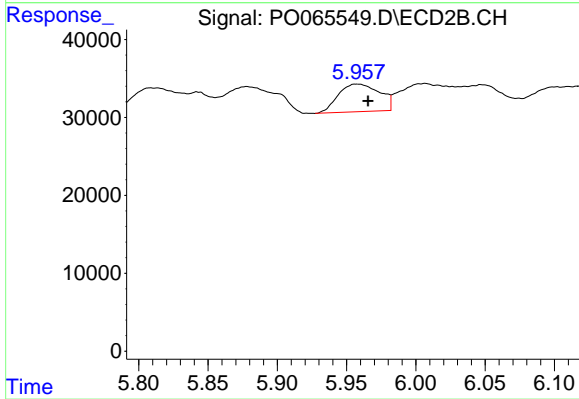
#30 AR-1254-5

R.T.: 6.468 min
 Delta R.T.: -0.010 min
 Response: 11604
 Conc: 5.21 ng/ml



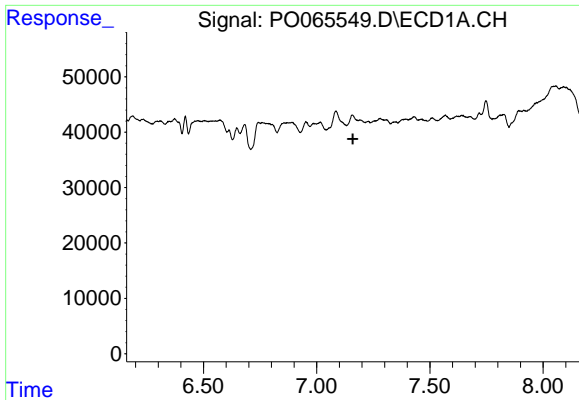
#31 AR-1260-1

R.T.: 0.000 min
 Exp R.T. : 6.903 min
 Response: 0
 Conc: N.D.



#31 AR-1260-1

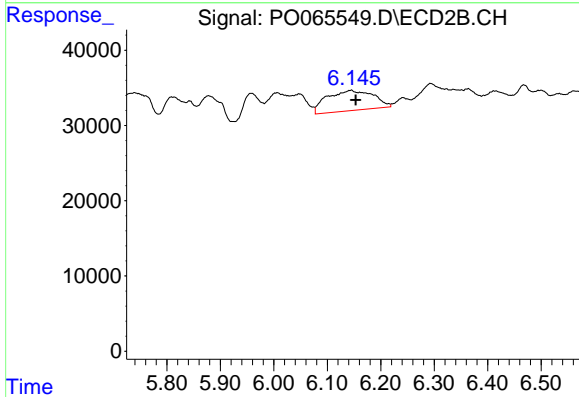
R.T.: 5.958 min
 Delta R.T.: -0.008 min
 Response: 73966
 Conc: 39.29 ng/ml



#32 AR-1260-2

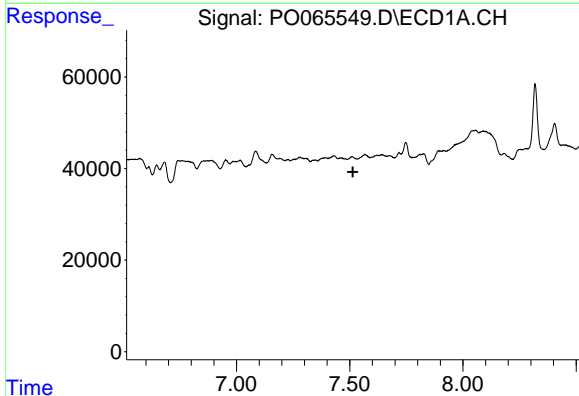
R.T.: 0.000 min
 Exp R.T. : 7.160 min
 Response: 0
 Conc: N.D.

Instrument :
 ECD_O
 ClientSampleId :
 INWOOD-BH-03-BRE



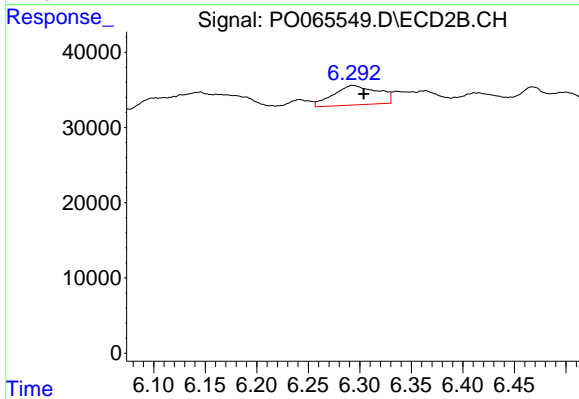
#32 AR-1260-2

R.T.: 6.145 min
 Delta R.T.: -0.008 min
 Response: 161518
 Conc: 66.48 ng/ml



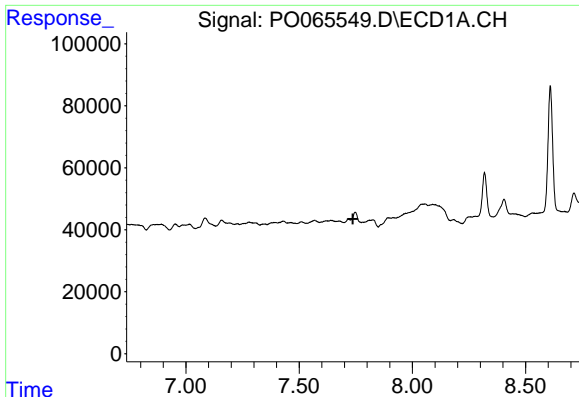
#33 AR-1260-3

R.T.: 0.000 min
 Exp R.T. : 7.514 min
 Response: 0
 Conc: N.D.



#33 AR-1260-3

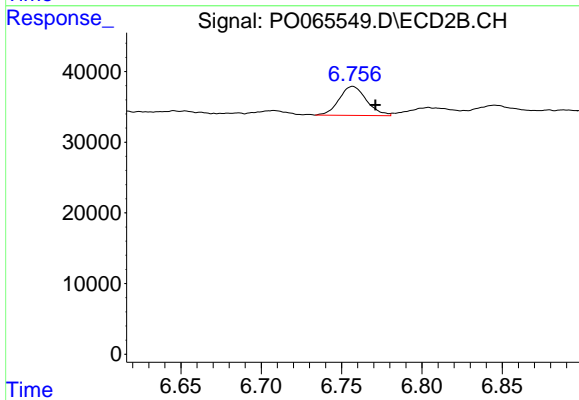
R.T.: 6.293 min
 Delta R.T.: -0.011 min
 Response: 77736
 Conc: 35.91 ng/ml



#34 AR-1260-4

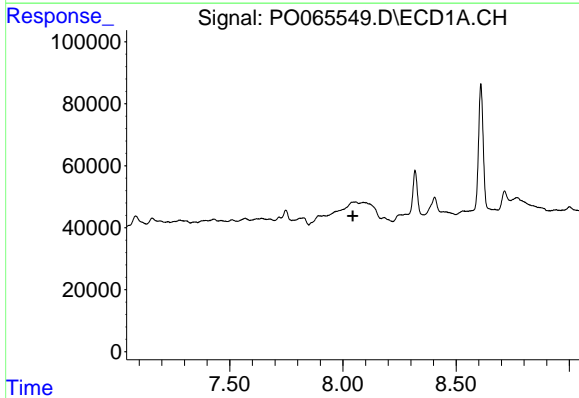
R.T.: 0.000 min
 Exp R.T. : 7.737 min
 Response: 0
 Conc: N.D.

Instrument :
 ECD_O
 ClientSampleId :
 INWOOD-BH-03-BRE



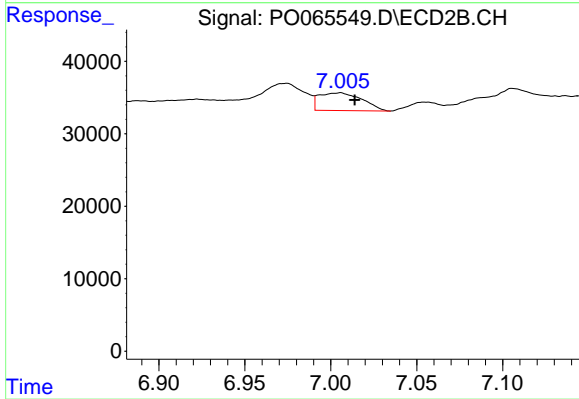
#34 AR-1260-4

R.T.: 6.757 min
 Delta R.T.: -0.014 min
 Response: 48603
 Conc: 24.23 ng/ml



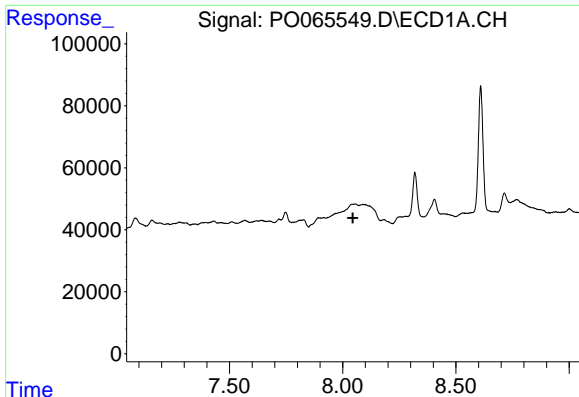
#35 AR-1260-5

R.T.: 0.000 min
 Exp R.T. : 8.044 min
 Response: 0
 Conc: N.D.



#35 AR-1260-5

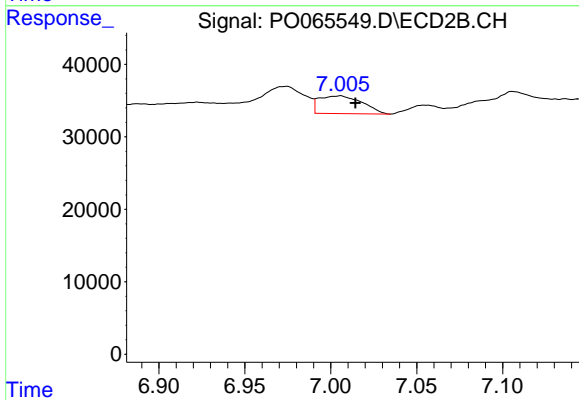
R.T.: 7.005 min
 Delta R.T.: -0.009 min
 Response: 42490
 Conc: 8.58 ng/ml



#37 AR-1262-2

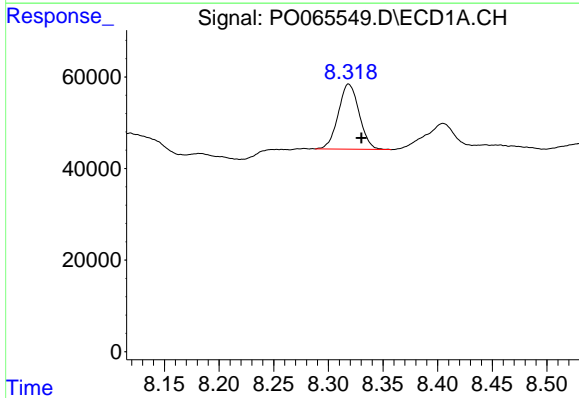
R.T.: 0.000 min
Exp R.T.: 8.045 min
Response: 0
Conc: N.D.

Instrument :
ECD_O
ClientSampleId :
INWOOD-BH-03-BRE



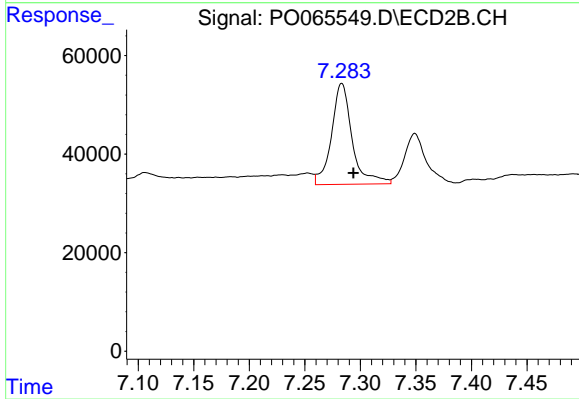
#37 AR-1262-2

R.T.: 7.005 min
Delta R.T.: -0.009 min
Response: 42490
Conc: 9.46 ng/ml



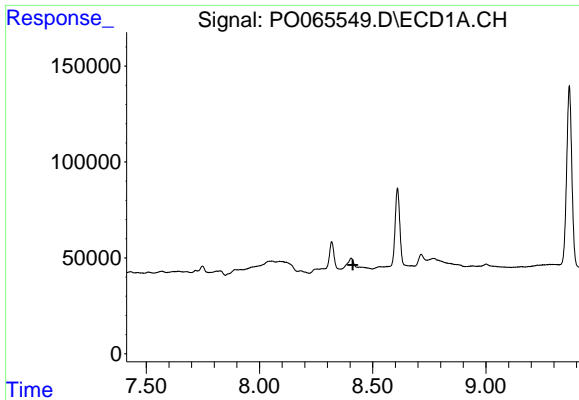
#38 AR-1262-3

R.T.: 8.319 min
Delta R.T.: -0.012 min
Response: 189084
Conc: 83.06 ng/ml



#38 AR-1262-3

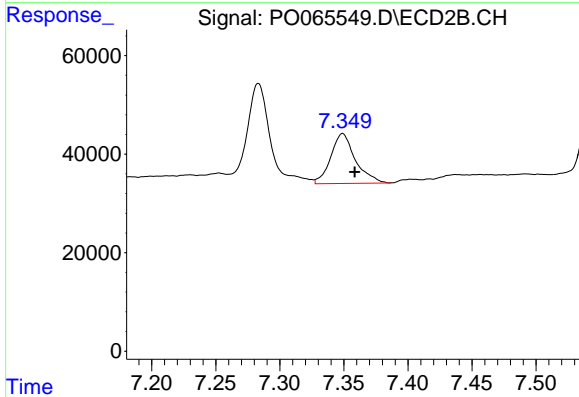
R.T.: 7.283 min
Delta R.T.: -0.011 min
Response: 265484
Conc: 157.74 ng/ml



#39 AR-1262-4

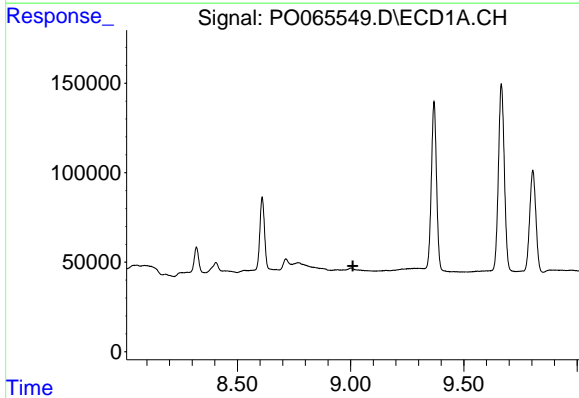
R.T.: 0.000 min
 Exp R.T. : 8.413 min
 Response: 0
 Conc: N.D.

Instrument :
 ECD_O
ClientSampled :
 INWOOD-BH-03-BRE



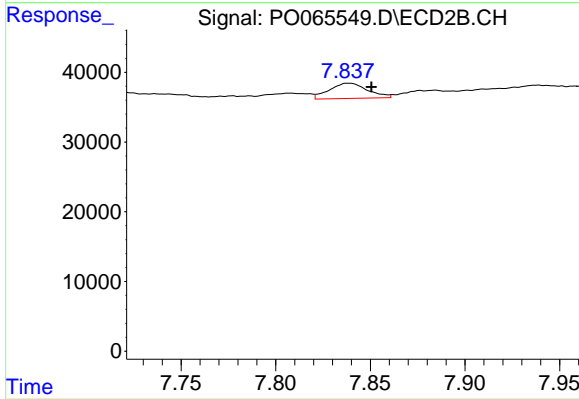
#39 AR-1262-4

R.T.: 7.349 min
 Delta R.T.: -0.009 min
 Response: 135387
 Conc: 39.37 ng/ml



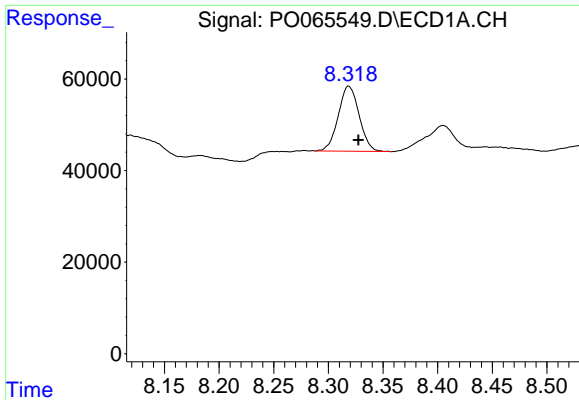
#40 AR-1262-5

R.T.: 0.000 min
 Exp R.T. : 9.010 min
 Response: 0
 Conc: N.D.



#40 AR-1262-5

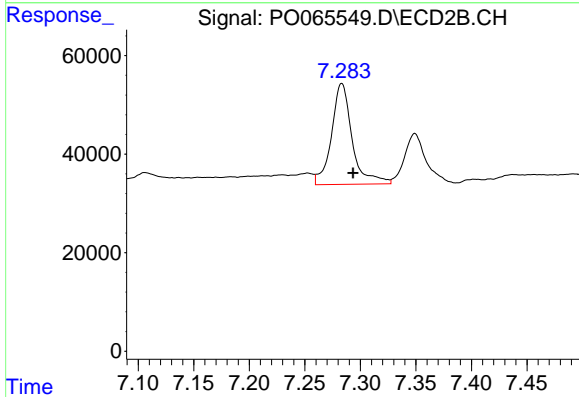
R.T.: 7.839 min
 Delta R.T.: -0.012 min
 Response: 30796
 Conc: 18.06 ng/ml



#41 AR-1268-1

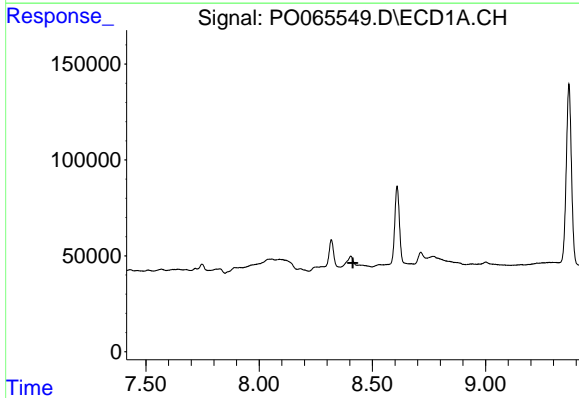
R.T.: 8.319 min
 Delta R.T.: -0.009 min
 Response: 189084
 Conc: 46.48 ng/ml

Instrument :
 ECD_O
 ClientSampleId :
 INWOOD-BH-03-BRE



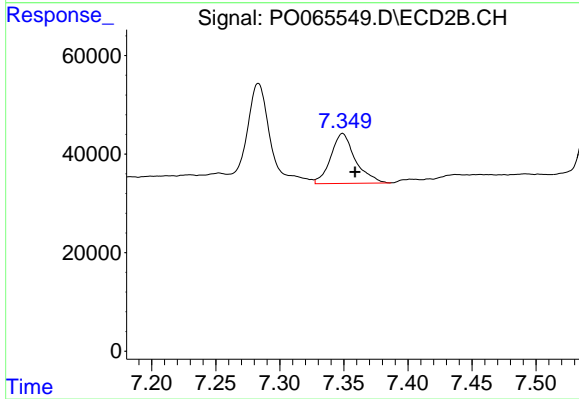
#41 AR-1268-1

R.T.: 7.283 min
 Delta R.T.: -0.010 min
 Response: 265484
 Conc: 49.99 ng/ml



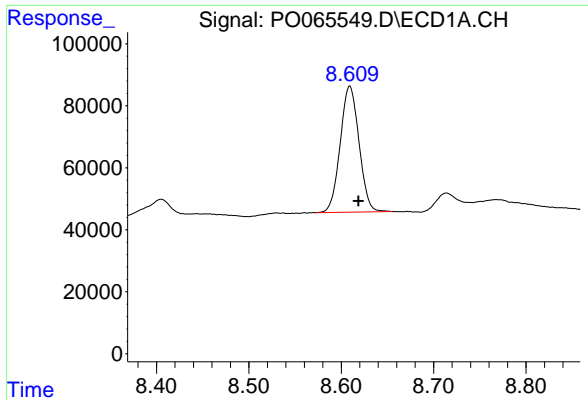
#42 AR-1268-2

R.T.: 0.000 min
 Exp R.T. : 8.414 min
 Response: 0
 Conc: N.D.



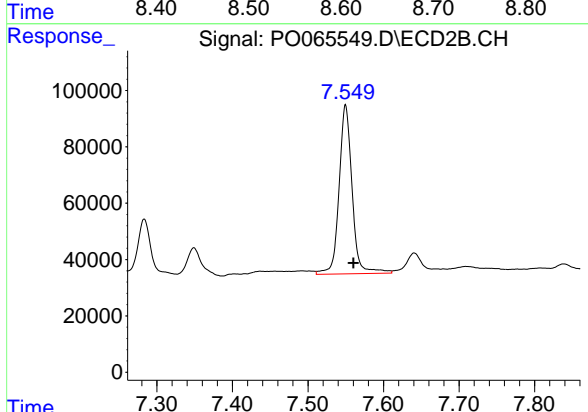
#42 AR-1268-2

R.T.: 7.349 min
 Delta R.T.: -0.010 min
 Response: 135387
 Conc: 26.65 ng/ml

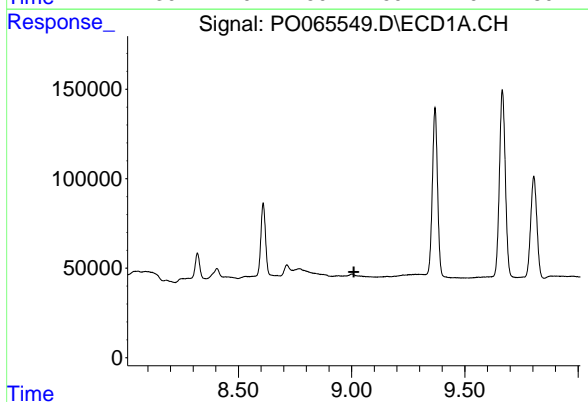


#43 AR-1268-3
 R.T.: 8.609 min
 Delta R.T.: -0.009 min
 Response: 575048
 Conc: 178.67 ng/ml

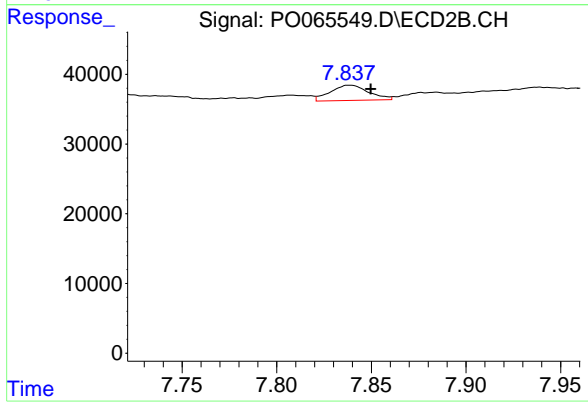
Instrument :
 ECD_O
ClientSampleId :
 INWOOD-BH-03-BRE



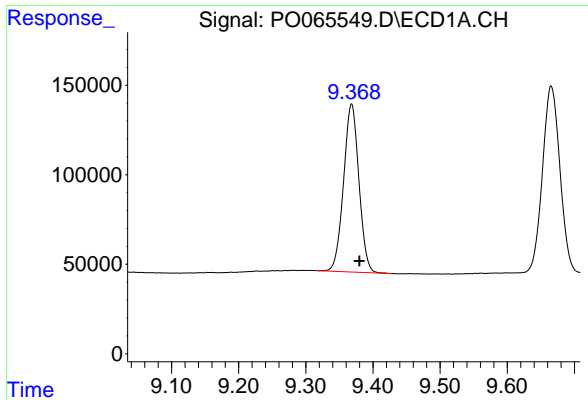
#43 AR-1268-3
 R.T.: 7.550 min
 Delta R.T.: -0.011 min
 Response: 719601
 Conc: 169.41 ng/ml



#44 AR-1268-4
 R.T.: 0.000 min
 Exp R.T. : 9.010 min
 Response: 0
 Conc: N.D.



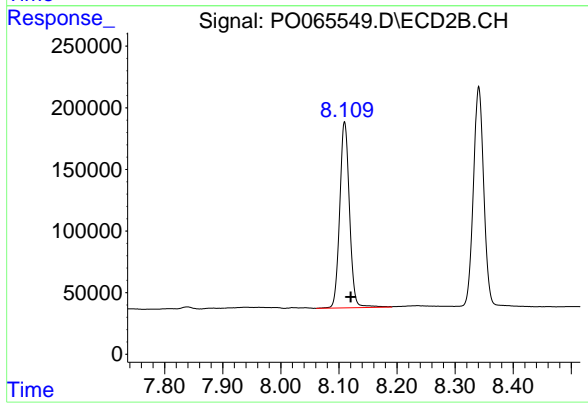
#44 AR-1268-4
 R.T.: 7.839 min
 Delta R.T.: -0.011 min
 Response: 30796
 Conc: 15.56 ng/ml



#45 AR-1268-5

R.T.: 9.368 min
Delta R.T.: -0.011 min
Response: 1490712
Conc: 134.55 ng/ml

Instrument :
ECD_O
ClientSampleId :
INWOOD-BH-03-BRE



#45 AR-1268-5

R.T.: 8.110 min
Delta R.T.: -0.011 min
Response: 1755703
Conc: 122.11 ng/ml