

Data Path : Z:\pestpcbsrv\HPCHEM1\ECD_0\Data\P0011620\
 Data File : P0065584.D
 Signal(s) : Signal #1: ECD1A.CH Signal #2: ECD2B.CH
 Acq On : 17 Jan 2020 1:20
 Operator : DD\AJ
 Sample : L1153-04
 Misc :
 ALS Vial : 39 Sample Multiplier: 1

Instrument :
 ECD_0
 ClientSampled :
 04-A-04-B-04-C

Integration File signal 1: autoint1.e
 Integration File signal 2: autoint2.e
 Quant Time: Jan 17 03:24:00 2020
 Quant Method : Z:\pestpcbsrv\HPCHEM1\ECD_0\methods\P0010420.M
 Quant Title : GC EXTRACTABLES
 QLast Update : Sat Jan 04 04:01:28 2020
 Response via : Initial Calibration
 Integrator: ChemStation 6890 Scale Mode: Small noise peaks clipped

Volume Inj. : 2 µl
 Signal #1 Phase : ZB-MR1 Signal #2 Phase: ZB-MR2
 Signal #1 Info : 30Mx0.32mmx 0.50µ Signal #2 Info : 30M x 0.32mm x 0.25µm

Compound	RT#1	RT#2	Resp#1	Resp#2	ng/ml	ng/ml
System Monitoring Compounds						
1) SA Tetrachlo...	4.158	3.434	649176	707488	35.551	32.162
2) SA Decachlor...	9.659	8.336	598359	729691	17.660	17.596
Target Compounds						
3) L1 AR-1016-1	0.000	4.514	0	130086	N.D.	126.253 #
4) L1 AR-1016-2	0.000	4.514	0	130086	N.D.	89.769 #
5) L1 AR-1016-3	5.420	4.732	578483	-98267	734.230	N.D. #
7) L1 AR-1016-5	0.000	4.939	0	76302	N.D.	89.676 #
8) L2 AR-1221-1	0.000	3.668	0	111580	N.D.	430.359 #
9) L2 AR-1221-2	0.000	3.726	0	135684	N.D.	688.136 #
10) L2 AR-1221-3	4.540	3.797	223595	368168	428.169	571.428 #
11) L3 AR-1232-1	4.540	3.797	223595	368168	552.817	738.991 #
12) L3 AR-1232-2	5.071	4.514	124015	130086	589.727	241.239 #
14) L3 AR-1232-4	5.490	4.768	55130	63608	236.299	237.935
15) L3 AR-1232-5	5.550	4.939	393556	76302	2225.970	266.155 #
16) L4 AR-1242-1	0.000	4.514	0	130086	N.D.	190.851 #
17) L4 AR-1242-2	0.000	4.514	0	130086	N.D.	135.743 #
18) L4 AR-1242-3	5.420	4.655	578483	-1368	1103.163	N.D. #
19) L4 AR-1242-4	5.490	4.768	55130	63608	130.129	121.699
20) L4 AR-1242-5	6.251	5.280	910775	205014	1672.568	282.079 #
21) L5 AR-1248-1	0.000	4.514	0	130086	N.D.	234.658 #
22) L5 AR-1248-2	5.550	4.732	393556	-98267	596.428	N.D. #
23) L5 AR-1248-3	0.000	4.768	0	63608	N.D.	80.845 #
24) L5 AR-1248-4	6.182	4.939	246716	76302	260.450	79.606 #
25) L5 AR-1248-5	6.251	5.315	910775	937539	995.678	926.152
26) L6 AR-1254-1	6.151	5.280	224940	205014	265.156	141.515 #
27) L6 AR-1254-2	6.367	5.426	275039	251163	200.143	189.882
28) L6 AR-1254-3	6.729	5.824	248146	337014	160.105	149.550
29) L6 AR-1254-4	7.014	6.051	184690	257160	144.887	170.577
30) L6 AR-1254-5	7.429	6.464	217036	448360	154.549	201.425 #
31) L7 AR-1260-1	0.000	5.952	0	223299	N.D.	118.609 #
32) L7 AR-1260-2	7.147	6.139	132486	251351	75.511	103.458 #
33) L7 AR-1260-3	0.000	6.290	0	210801	N.D.	97.390 #
34) L7 AR-1260-4	7.762	6.758	87728	91012	50.243	45.365
35) L7 AR-1260-5	8.033	7.000	86101	116990	25.674	23.632
36) L8 AR-1262-1	0.000	6.554	0	65685	N.D.	69.674 #
37) L8 AR-1262-2	8.033	7.000	86101	116990	26.886	26.037
38) L8 AR-1262-3	8.391	7.281	658171	66306	289.125	39.397 #
39) L8 AR-1262-4	8.391	7.342	658171	226174	372.331	65.767 #
40) L8 AR-1262-5	0.000	7.835	0	38058	N.D.	22.318 #
41) L9 AR-1268-1	8.391	7.281	658171	66306	161.784	12.485 #
42) L9 AR-1268-2	8.391	7.342	658171	226174	171.015	44.527 #
43) L9 AR-1268-3	0.000	7.552	0	84585	N.D.	19.913 #

Data Path : Z:\pestpcbsrv\HPCHEM1\ECD_0\Data\P0011620\
 Data File : P0065584.D
 Signal(s) : Signal #1: ECD1A.CH Signal #2: ECD2B.CH
 Acq On : 17 Jan 2020 1:20
 Operator : DD\AJ
 Sample : L1153-04
 Misc :
 ALS Vial : 39 Sample Multiplier: 1

Instrument :
 ECD_0
 ClientSampleId :
 04-A-04-B-04-C

Integration File signal 1: autoint1.e
 Integration File signal 2: autoint2.e
 Quant Time: Jan 17 03:24:00 2020
 Quant Method : Z:\pestpcbsrv\HPCHEM1\ECD_0\methods\P0010420.M
 Quant Title : GC EXTRACTABLES
 QLast Update : Sat Jan 04 04:01:28 2020
 Response via : Initial Calibration
 Integrator: ChemStation 6890 Scale Mode: Small noise peaks clipped

Volume Inj. : 2 µl
 Signal #1 Phase : ZB-MR1 Signal #2 Phase: ZB-MR2
 Signal #1 Info : 30Mx0.32mmx 0.50µ Signal #2 Info : 30M x 0.32mm x 0.25µm

	Compound	RT#1	RT#2	Resp#1	Resp#2	ng/ml	ng/ml
44)	L9 AR-1268-4	0.000	7.835	0	38058	N.D.	19.228 #

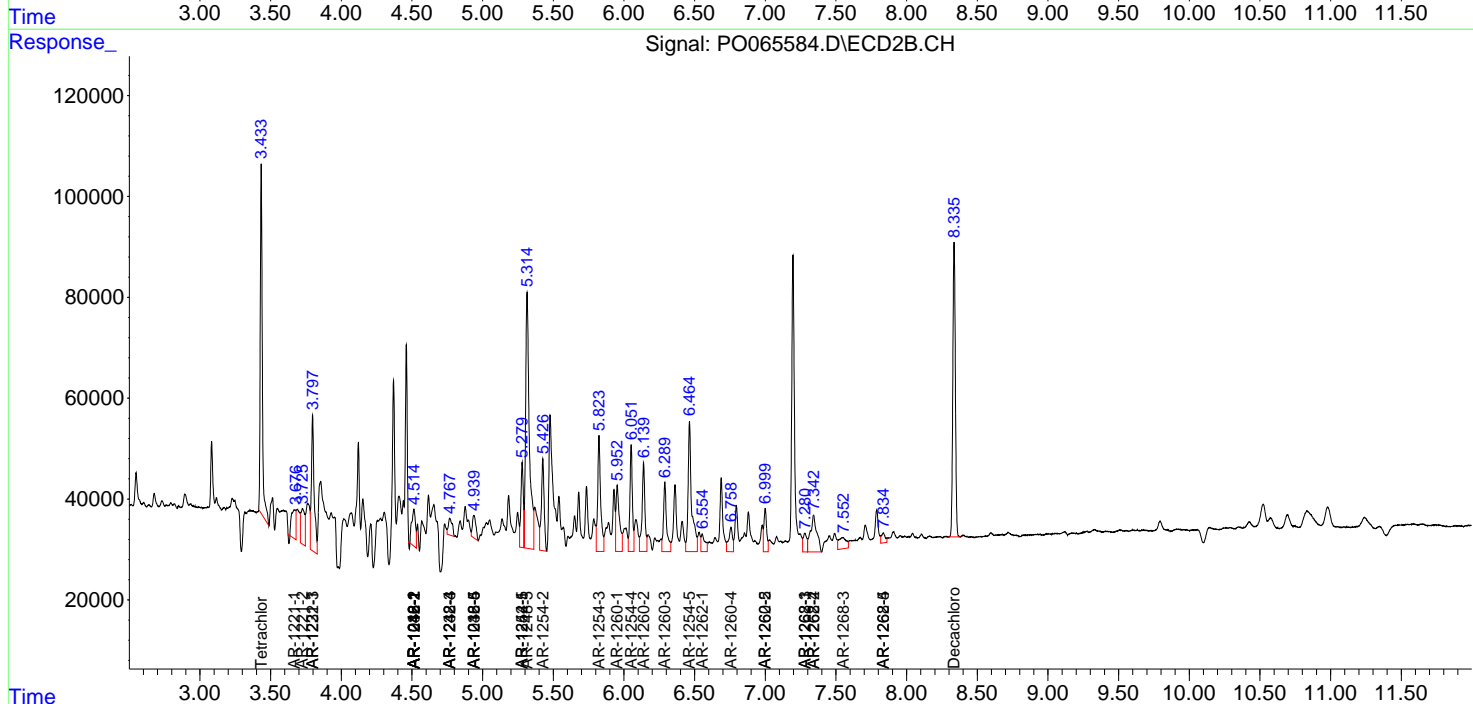
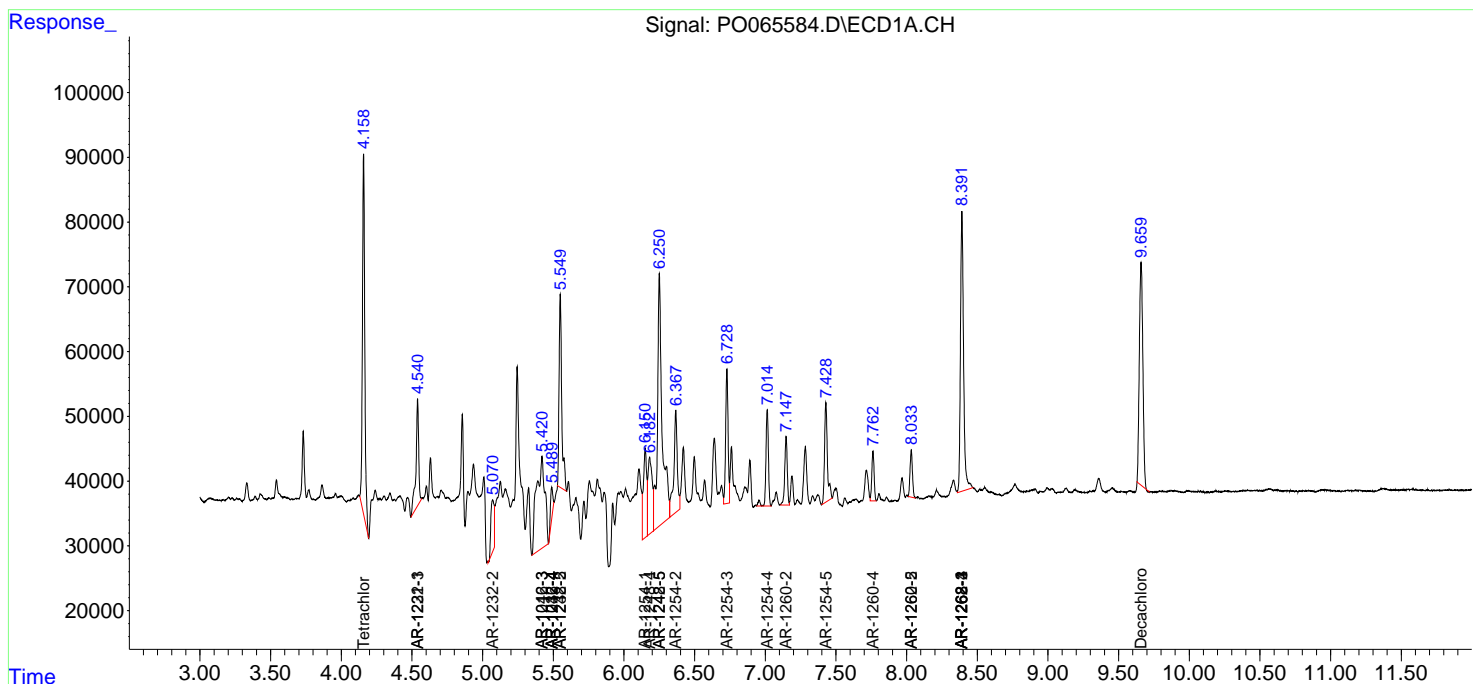
(f)=RT Delta > 1/2 Window (#)=Amounts differ by > 25% (m)=manual int.

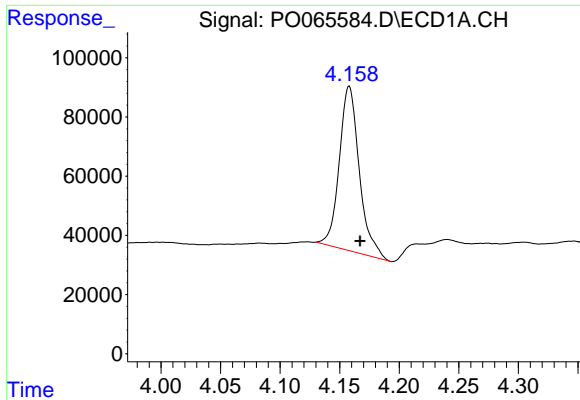
Data Path : Z:\pestpcbsrv\HPCHEM1\ECD_O\Data\P0011620\
 Data File : P0065584.D
 Signal(s) : Signal #1: ECD1A.CH Signal #2: ECD2B.CH
 Acq On : 17 Jan 2020 1:20
 Operator : DD\AJ
 Sample : L1153-04
 Misc :
 ALS Vial : 39 Sample Multiplier: 1

Instrument :
 ECD_O
 ClientSampled :
 04-A-04-B-04-C

Integration File signal 1: autoint1.e
 Integration File signal 2: autoint2.e
 Quant Time: Jan 17 03:24:00 2020
 Quant Method : Z:\pestpcbsrv\HPCHEM1\ECD_O\methods\P0010420.M
 Quant Title : GC EXTRACTABLES
 QLast Update : Sat Jan 04 04:01:28 2020
 Response via : Initial Calibration
 Integrator: ChemStation 6890 Scale Mode: Small noise peaks clipped

Volume Inj. : 2 µl
 Signal #1 Phase : ZB-MR1 Signal #2 Phase: ZB-MR2
 Signal #1 Info : 30Mx0.32mmx 0.50µ Signal #2 Info : 30M x 0.32mm x 0.25µm

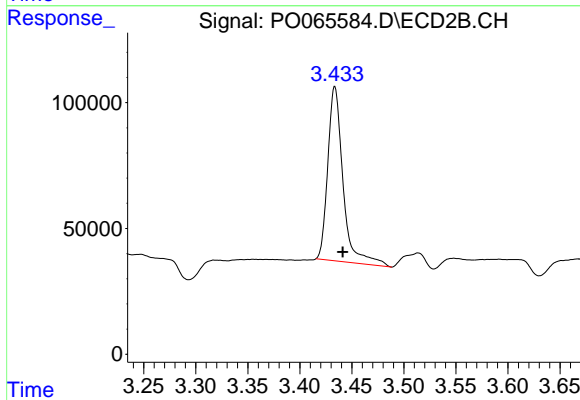




#1 Tetrachloro-m-xylene

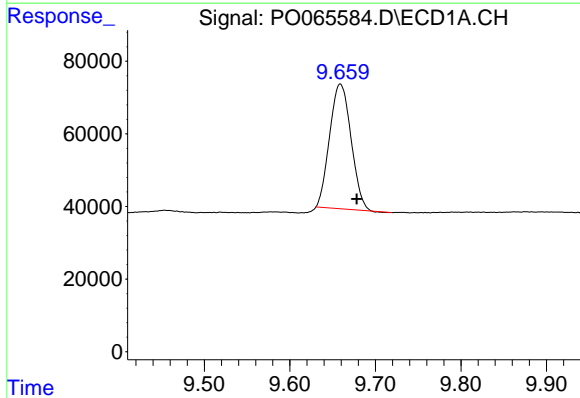
R.T.: 4.158 min
 Delta R.T.: -0.009 min
 Response: 649176
 Conc: 35.55 ng/ml

Instrument :
 ECD_O
 ClientSampleId :
 04-A-04-B-04-C



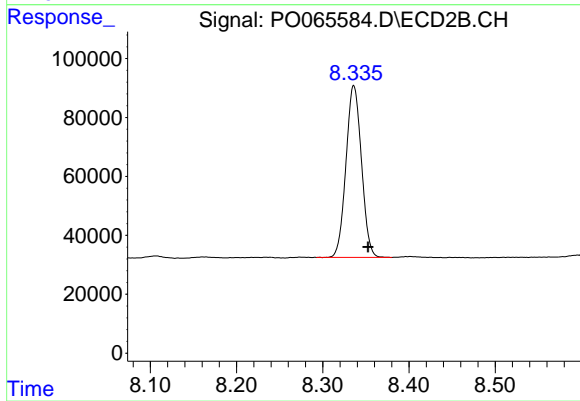
#1 Tetrachloro-m-xylene

R.T.: 3.434 min
 Delta R.T.: -0.007 min
 Response: 707488
 Conc: 32.16 ng/ml



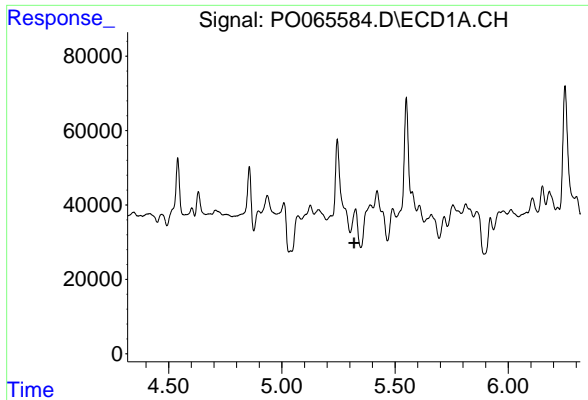
#2 Decachlorobiphenyl

R.T.: 9.659 min
 Delta R.T.: -0.019 min
 Response: 598359
 Conc: 17.66 ng/ml



#2 Decachlorobiphenyl

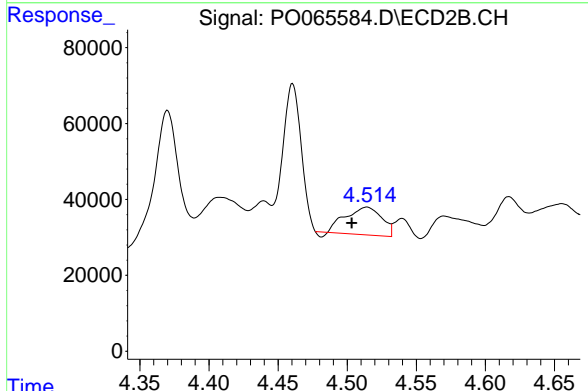
R.T.: 8.336 min
 Delta R.T.: -0.017 min
 Response: 729691
 Conc: 17.60 ng/ml



#3 AR-1016-1

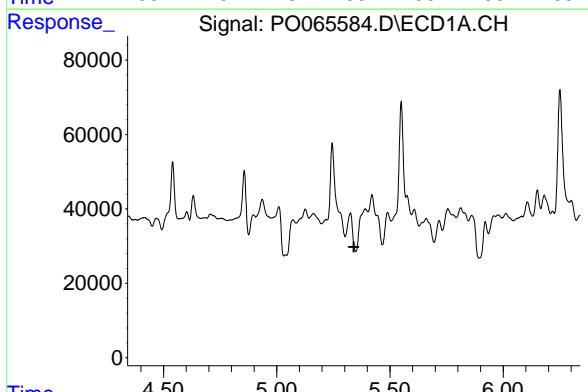
R.T.: 0.000 min
 Exp R.T.: 5.319 min
 Response: 0
 Conc: N.D.

Instrument :
 ECD_O
 ClientSampled :
 04-A-04-B-04-C



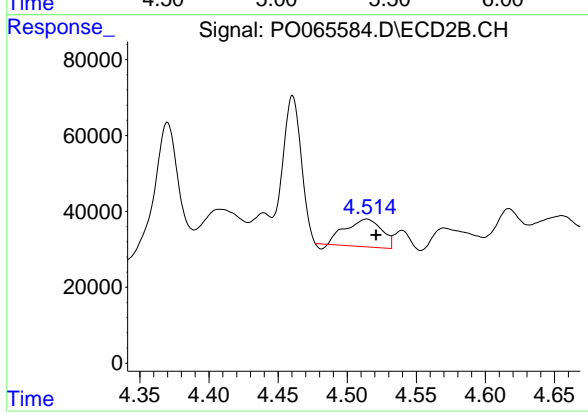
#3 AR-1016-1

R.T.: 4.514 min
 Delta R.T.: 0.011 min
 Response: 130086
 Conc: 126.25 ng/ml



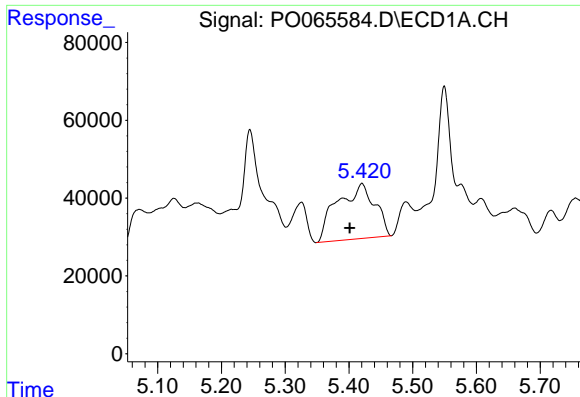
#4 AR-1016-2

R.T.: 0.000 min
 Exp R.T.: 5.341 min
 Response: 0
 Conc: N.D.



#4 AR-1016-2

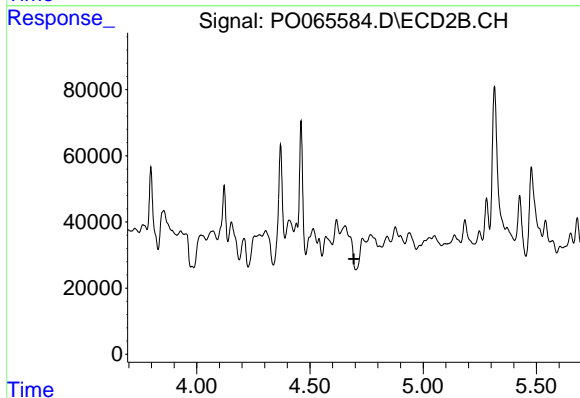
R.T.: 4.514 min
 Delta R.T.: -0.007 min
 Response: 130086
 Conc: 89.77 ng/ml



#5 AR-1016-3

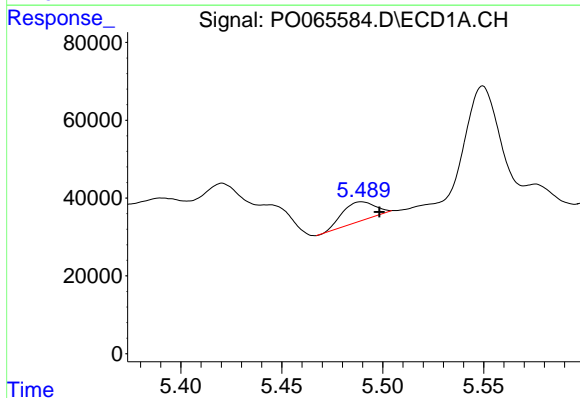
R.T.: 5.420 min
 Delta R.T.: 0.019 min
 Response: 578483
 Conc: 734.23 ng/ml

Instrument :
 ECD_O
 ClientSampleId :
 04-A-04-B-04-C



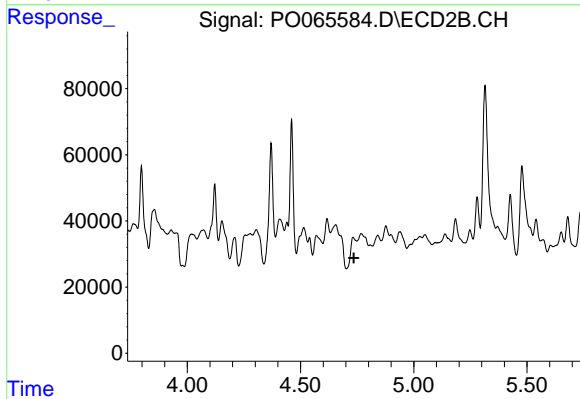
#5 AR-1016-3

R.T.: 4.732 min
 Delta R.T.: 0.038 min
 Response: -98267
 Conc: N.D.



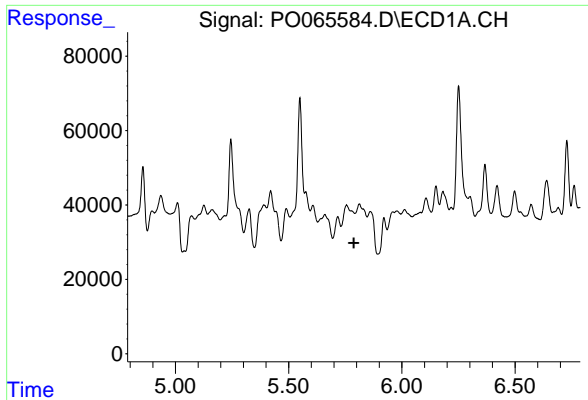
#6 AR-1016-4

R.T.: 5.490 min
 Delta R.T.: -0.009 min
 Response: 55130
 Conc: 85.44 ng/ml



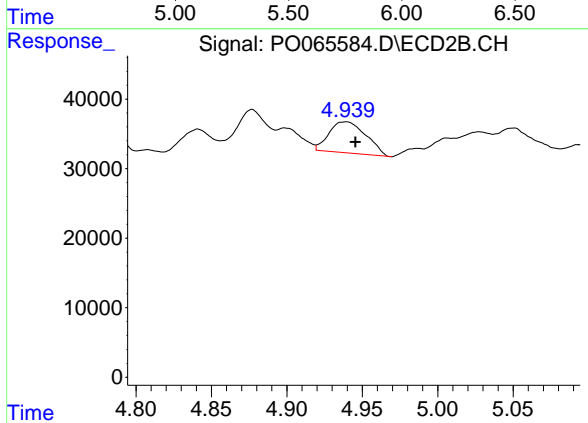
#6 AR-1016-4

R.T.: 4.732 min
 Delta R.T.: -0.004 min
 Response: -98267
 Conc: N.D.

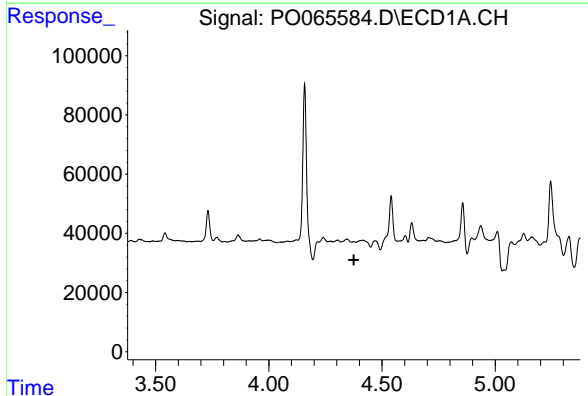


#7 AR-1016-5
 R.T.: 0.000 min
 Exp R.T.: 5.788 min
 Response: 0
 Conc: N.D.

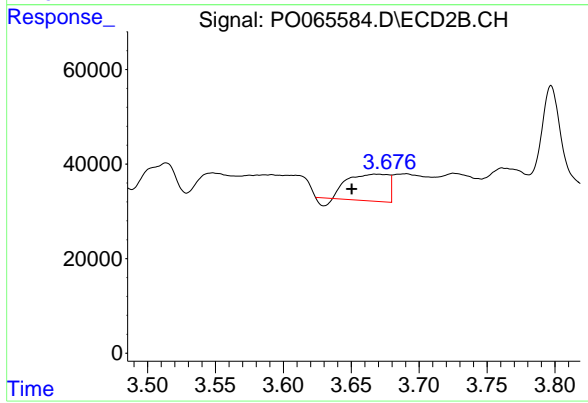
Instrument :
 ECD_O
ClientSampled :
 04-A-04-B-04-C



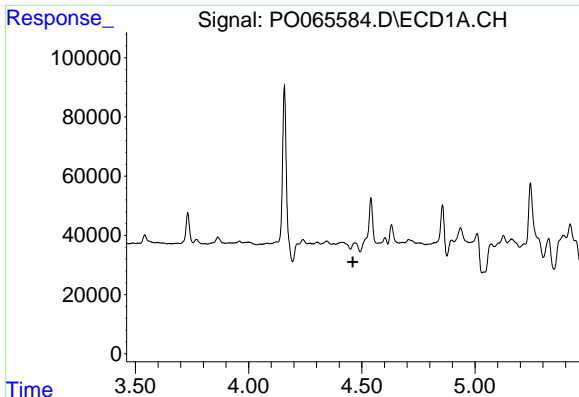
#7 AR-1016-5
 R.T.: 4.939 min
 Delta R.T.: -0.006 min
 Response: 76302
 Conc: 89.68 ng/ml



#8 AR-1221-1
 R.T.: 0.000 min
 Exp R.T.: 4.375 min
 Response: 0
 Conc: N.D.



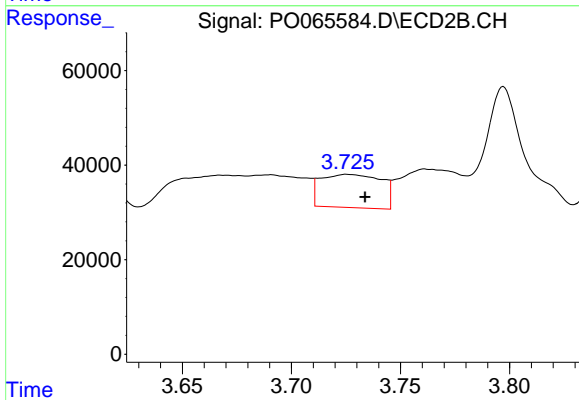
#8 AR-1221-1
 R.T.: 3.668 min
 Delta R.T.: 0.018 min
 Response: 111580
 Conc: 430.36 ng/ml



#9 AR-1221-2

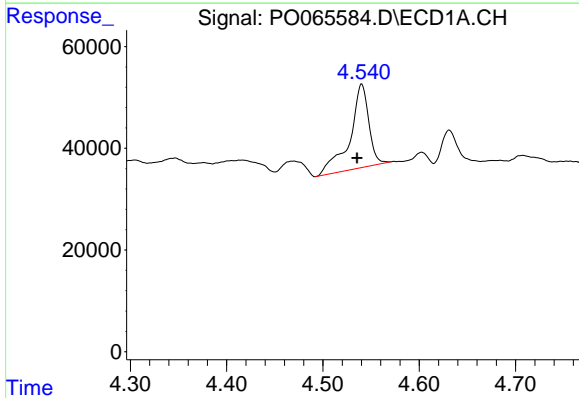
R.T.: 0.000 min
Exp R.T.: 4.461 min
Response: 0
Conc: N.D.

Instrument :
ECD_O
ClientSampleId :
04-A-04-B-04-C



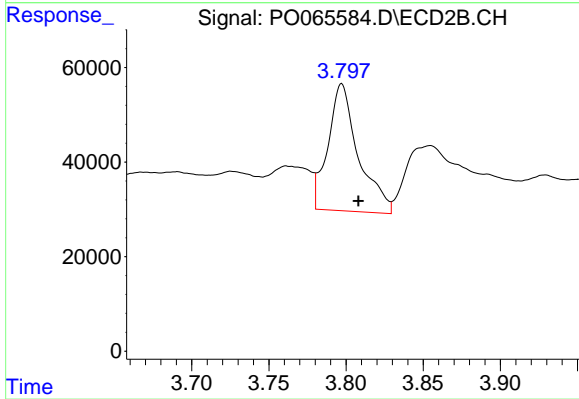
#9 AR-1221-2

R.T.: 3.726 min
Delta R.T.: -0.008 min
Response: 135684
Conc: 688.14 ng/ml



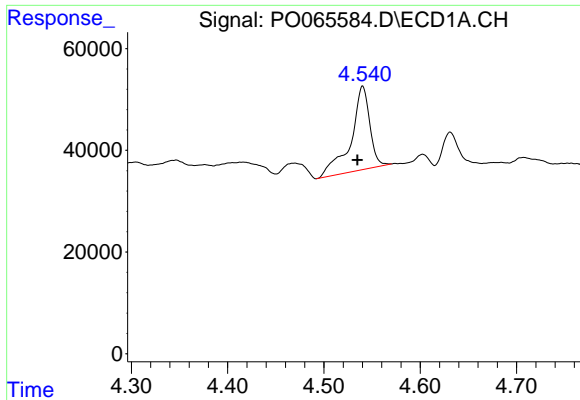
#10 AR-1221-3

R.T.: 4.540 min
Delta R.T.: 0.005 min
Response: 223595
Conc: 428.17 ng/ml



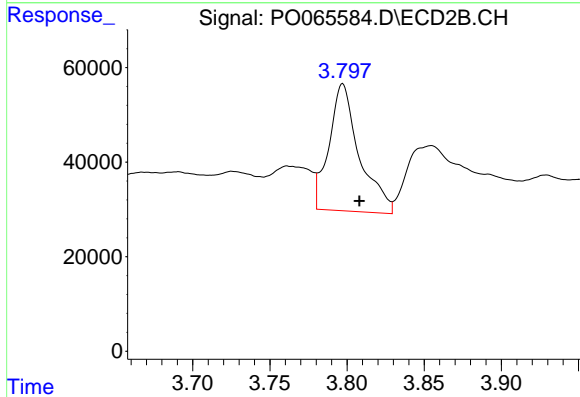
#10 AR-1221-3

R.T.: 3.797 min
Delta R.T.: -0.011 min
Response: 368168
Conc: 571.43 ng/ml

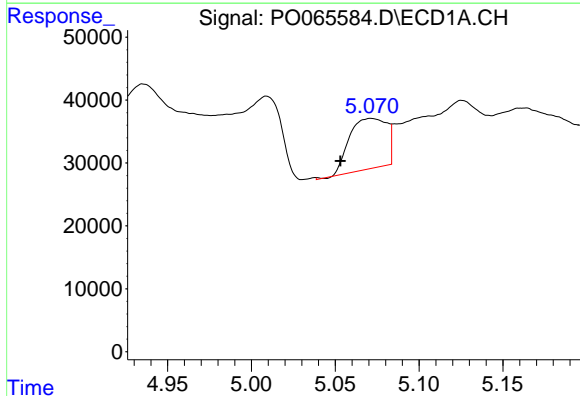


#11 AR-1232-1
 R.T.: 4.540 min
 Delta R.T.: 0.005 min
 Response: 223595
 Conc: 552.82 ng/ml

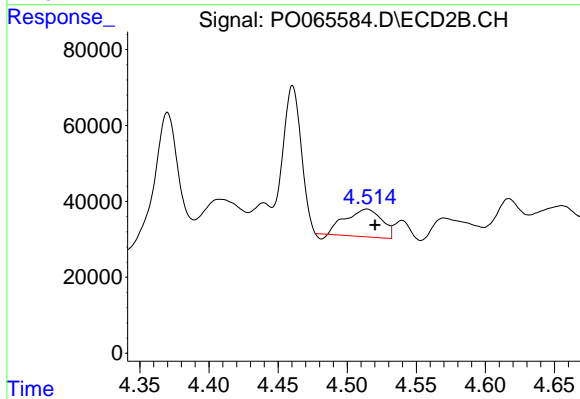
Instrument :
 ECD_O
 ClientSampleId :
 04-A-04-B-04-C



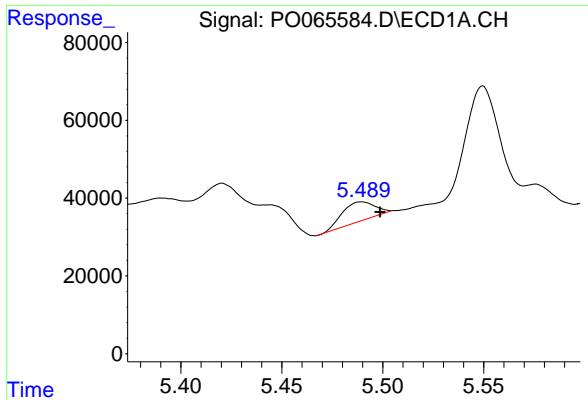
#11 AR-1232-1
 R.T.: 3.797 min
 Delta R.T.: -0.011 min
 Response: 368168
 Conc: 738.99 ng/ml



#12 AR-1232-2
 R.T.: 5.071 min
 Delta R.T.: 0.018 min
 Response: 124015
 Conc: 589.73 ng/ml



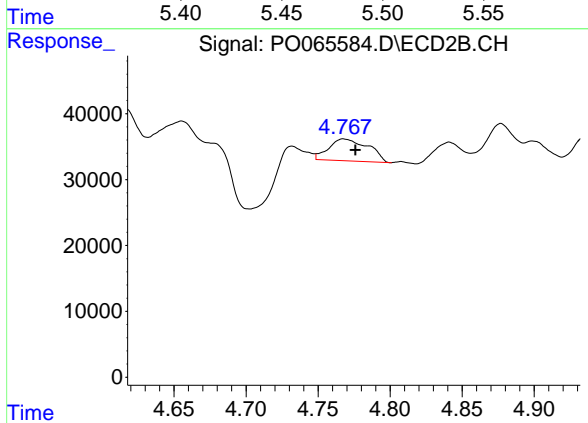
#12 AR-1232-2
 R.T.: 4.514 min
 Delta R.T.: -0.006 min
 Response: 130086
 Conc: 241.24 ng/ml



#14 AR-1232-4

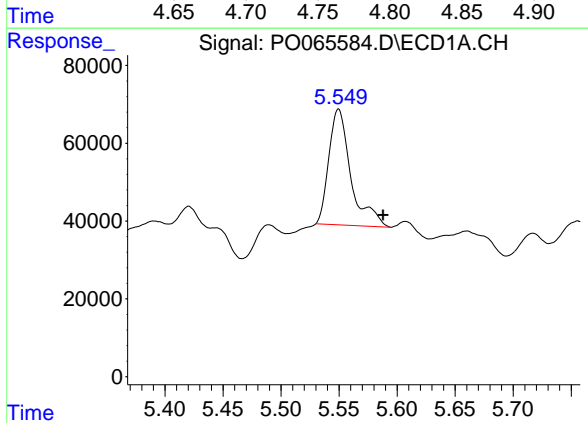
R.T.: 5.490 min
 Delta R.T.: -0.009 min
 Response: 55130
 Conc: 236.30 ng/ml

Instrument :
 ECD_O
 ClientSampleId :
 04-A-04-B-04-C



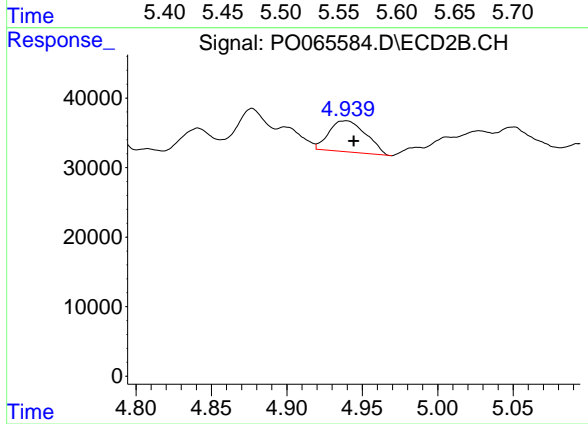
#14 AR-1232-4

R.T.: 4.768 min
 Delta R.T.: -0.008 min
 Response: 63608
 Conc: 237.93 ng/ml



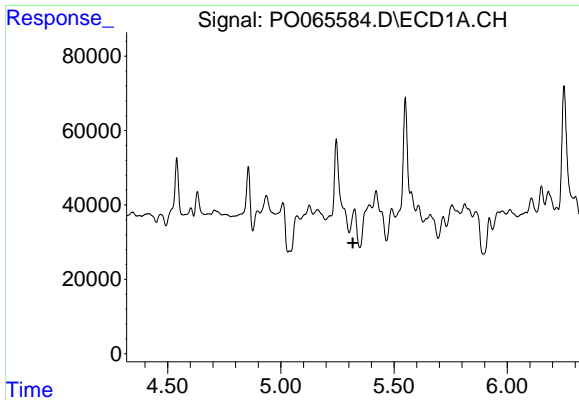
#15 AR-1232-5

R.T.: 5.550 min
 Delta R.T.: -0.039 min
 Response: 393556
 Conc: 2225.97 ng/ml



#15 AR-1232-5

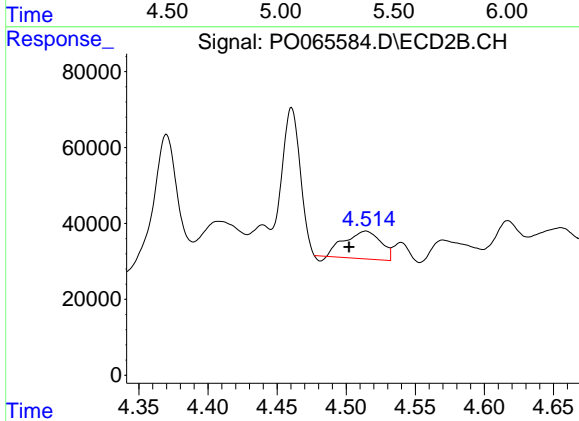
R.T.: 4.939 min
 Delta R.T.: -0.005 min
 Response: 76302
 Conc: 266.16 ng/ml



#16 AR-1242-1

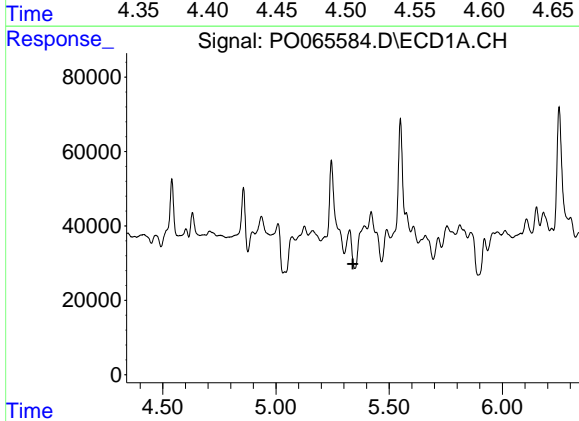
R.T.: 0.000 min
 Exp R.T. : 5.318 min
 Response: 0
 Conc: N.D.

Instrument :
 ECD_O
 ClientSampled :
 04-A-04-B-04-C



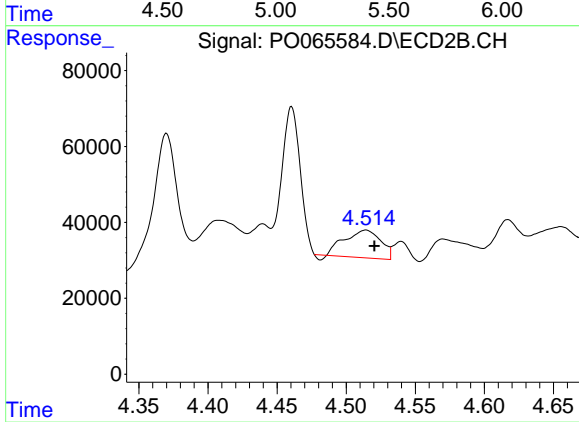
#16 AR-1242-1

R.T.: 4.514 min
 Delta R.T.: 0.012 min
 Response: 130086
 Conc: 190.85 ng/ml



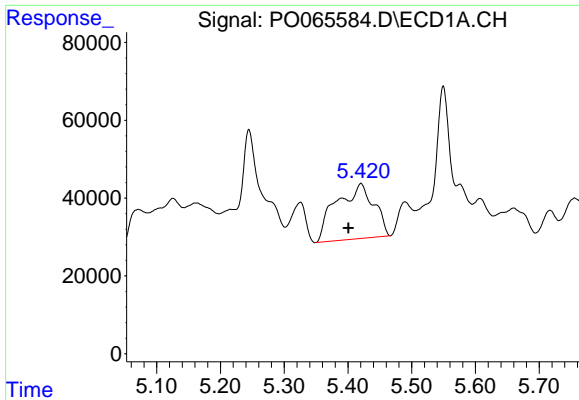
#17 AR-1242-2

R.T.: 0.000 min
 Exp R.T. : 5.340 min
 Response: 0
 Conc: N.D.



#17 AR-1242-2

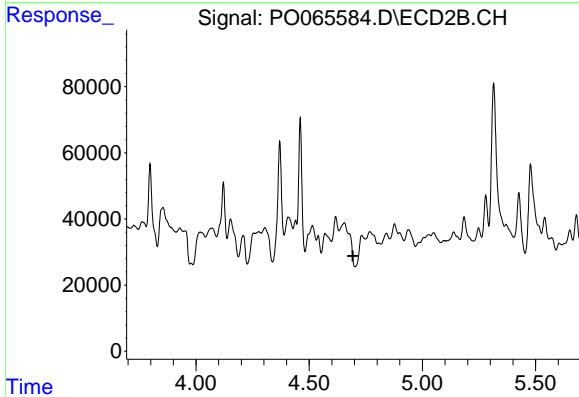
R.T.: 4.514 min
 Delta R.T.: -0.006 min
 Response: 130086
 Conc: 135.74 ng/ml



#18 AR-1242-3

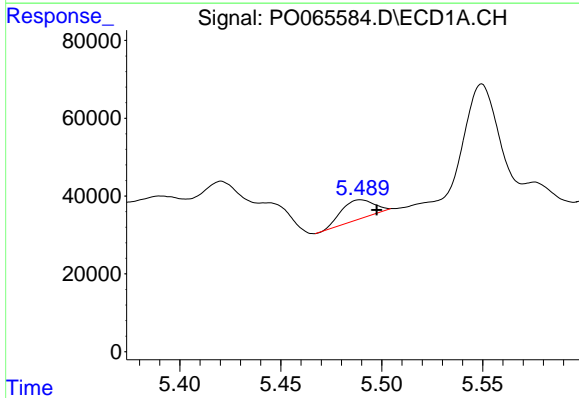
R.T.: 5.420 min
 Delta R.T.: 0.020 min
 Response: 578483
 Conc: 1103.16 ng/ml

Instrument :
 ECD_O
 ClientSampleId :
 04-A-04-B-04-C



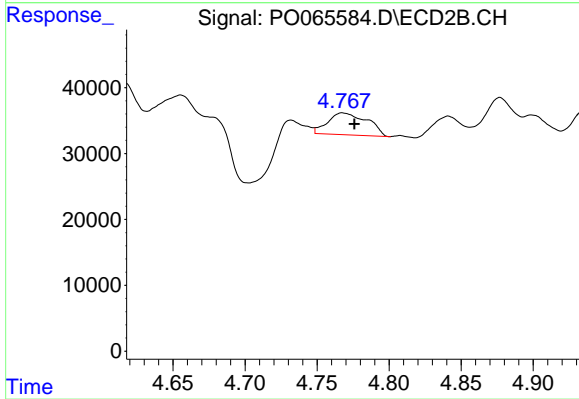
#18 AR-1242-3

R.T.: 4.655 min
 Delta R.T.: -0.038 min
 Response: -1368
 Conc: N.D.



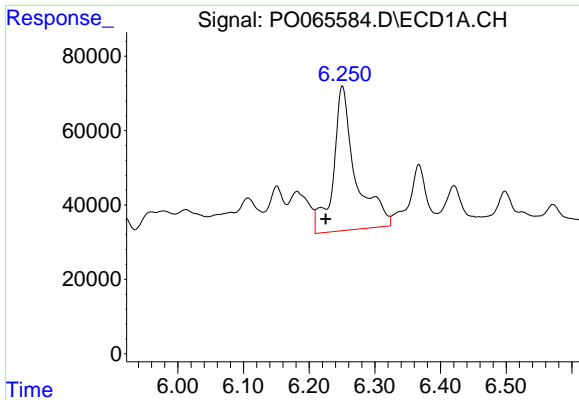
#19 AR-1242-4

R.T.: 5.490 min
 Delta R.T.: -0.008 min
 Response: 55130
 Conc: 130.13 ng/ml



#19 AR-1242-4

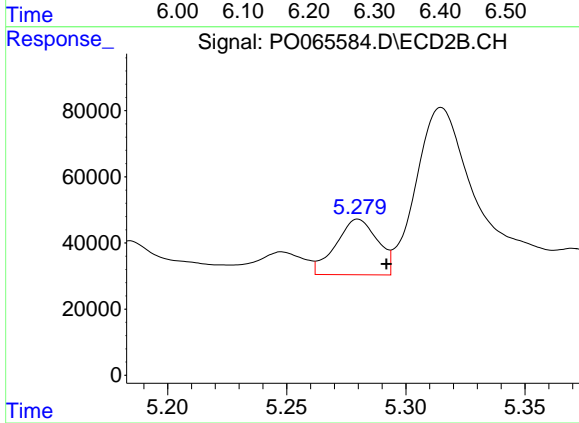
R.T.: 4.768 min
 Delta R.T.: -0.008 min
 Response: 63608
 Conc: 121.70 ng/ml



#20 AR-1242-5

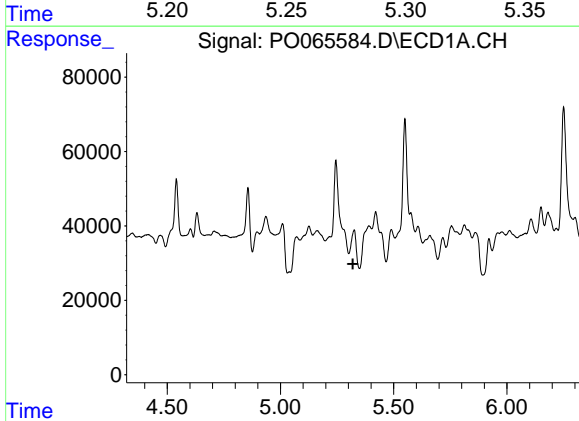
R.T.: 6.251 min
 Delta R.T.: 0.026 min
 Response: 910775
 Conc: 1672.57 ng/ml

Instrument :
 ECD_O
 ClientSampled :
 04-A-04-B-04-C



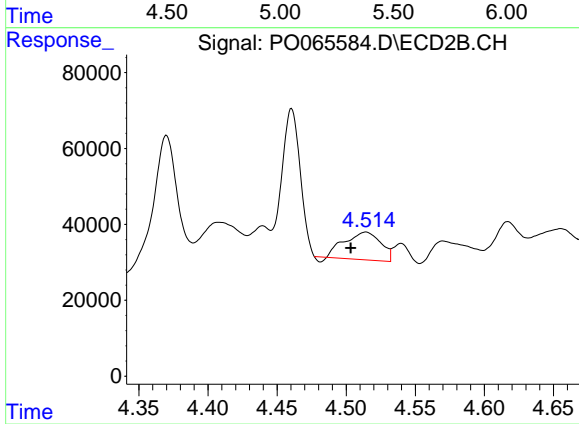
#20 AR-1242-5

R.T.: 5.280 min
 Delta R.T.: -0.012 min
 Response: 205014
 Conc: 282.08 ng/ml



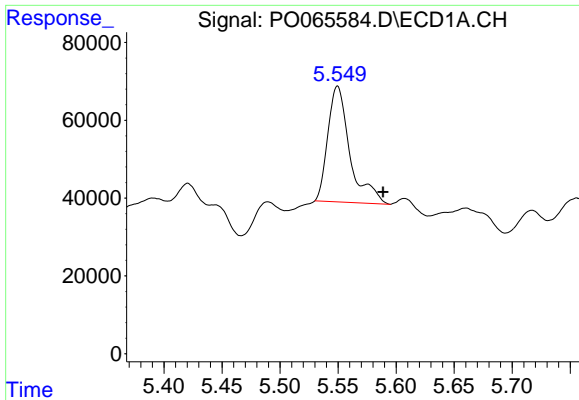
#21 AR-1248-1

R.T.: 0.000 min
 Exp R.T. : 5.320 min
 Response: 0
 Conc: N.D.



#21 AR-1248-1

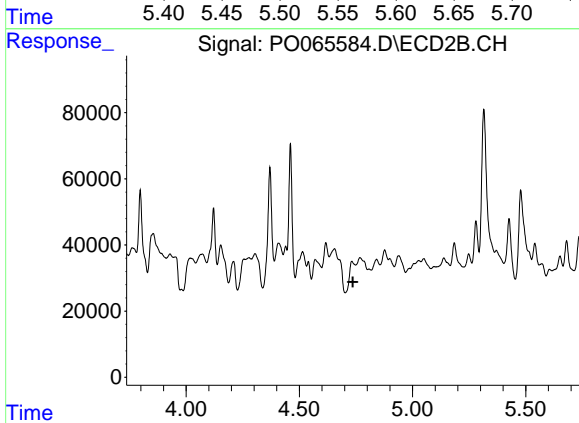
R.T.: 4.514 min
 Delta R.T.: 0.011 min
 Response: 130086
 Conc: 234.66 ng/ml



#22 AR-1248-2

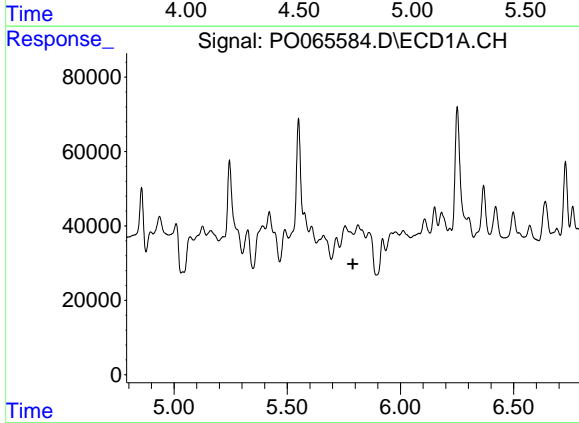
R.T.: 5.550 min
 Delta R.T.: -0.039 min
 Response: 393556
 Conc: 596.43 ng/ml

Instrument :
 ECD_O
 ClientSampleId :
 04-A-04-B-04-C



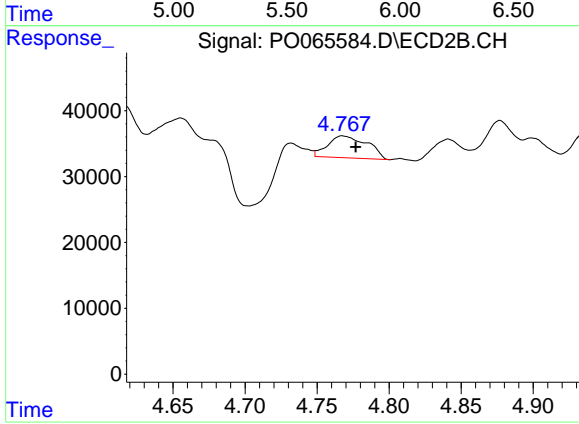
#22 AR-1248-2

R.T.: 4.732 min
 Delta R.T.: -0.004 min
 Response: -98267
 Conc: N.D.



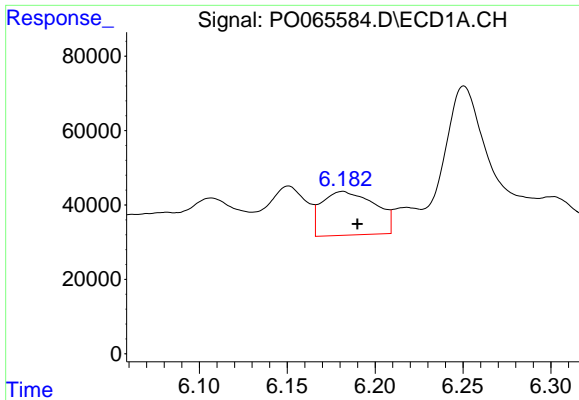
#23 AR-1248-3

R.T.: 0.000 min
 Exp R.T. : 5.790 min
 Response: 0
 Conc: N.D.



#23 AR-1248-3

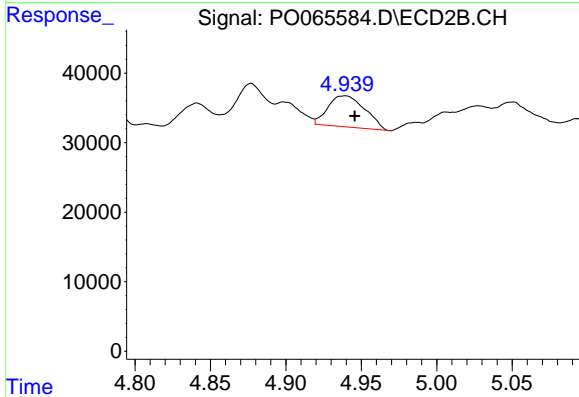
R.T.: 4.768 min
 Delta R.T.: -0.009 min
 Response: 63608
 Conc: 80.84 ng/ml



#24 AR-1248-4

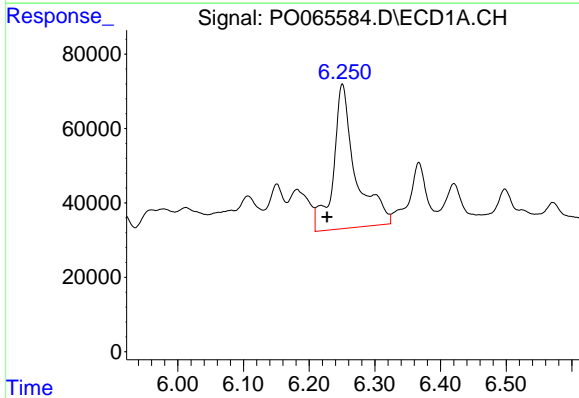
R.T.: 6.182 min
 Delta R.T.: -0.008 min
 Response: 246716
 Conc: 260.45 ng/ml

Instrument :
 ECD_O
 ClientSampleId :
 04-A-04-B-04-C



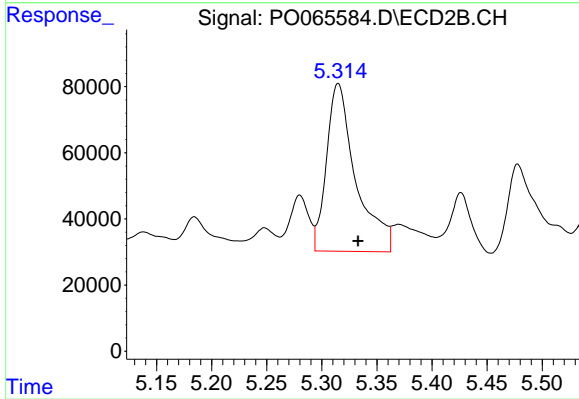
#24 AR-1248-4

R.T.: 4.939 min
 Delta R.T.: -0.007 min
 Response: 76302
 Conc: 79.61 ng/ml



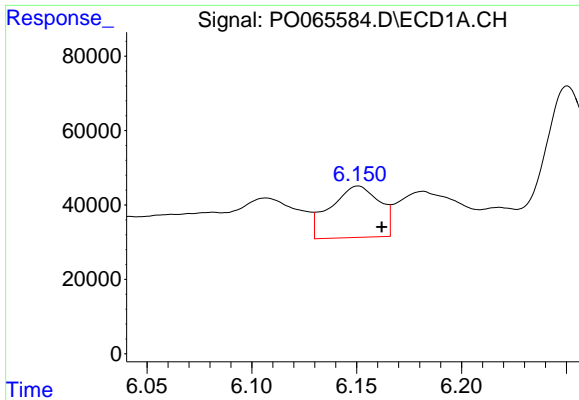
#25 AR-1248-5

R.T.: 6.251 min
 Delta R.T.: 0.024 min
 Response: 910775
 Conc: 995.68 ng/ml



#25 AR-1248-5

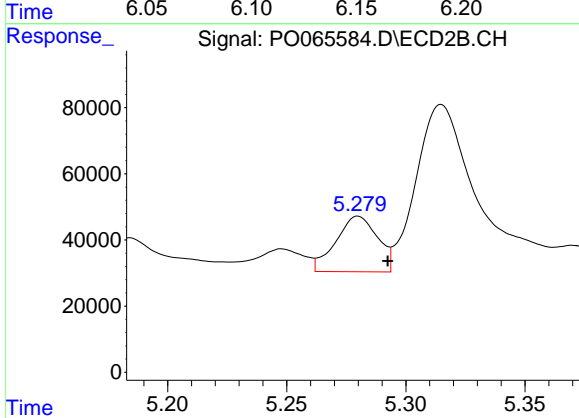
R.T.: 5.315 min
 Delta R.T.: -0.018 min
 Response: 937539
 Conc: 926.15 ng/ml



#26 AR-1254-1

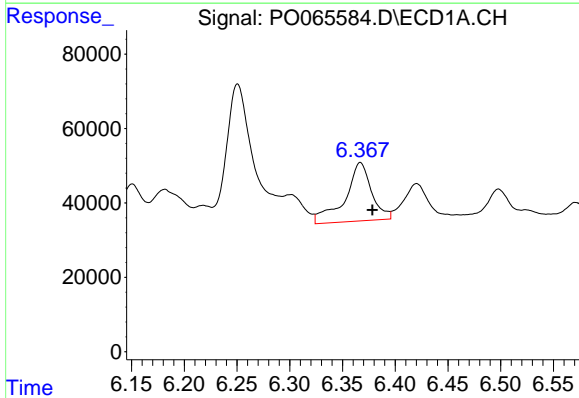
R.T.: 6.151 min
 Delta R.T.: -0.011 min
 Response: 224940
 Conc: 265.16 ng/ml

Instrument :
 ECD_O
 ClientSampleId :
 04-A-04-B-04-C



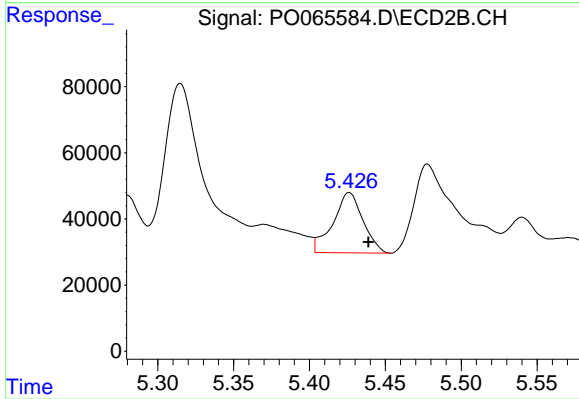
#26 AR-1254-1

R.T.: 5.280 min
 Delta R.T.: -0.013 min
 Response: 205014
 Conc: 141.51 ng/ml



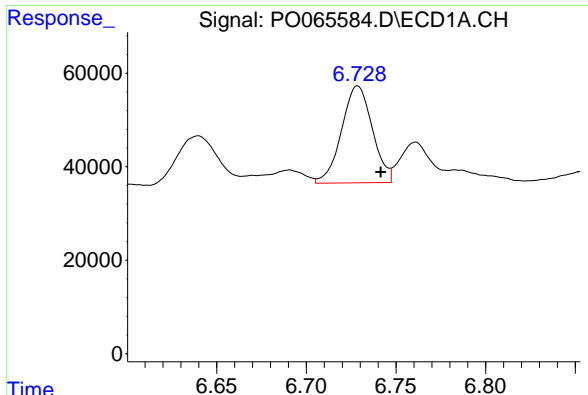
#27 AR-1254-2

R.T.: 6.367 min
 Delta R.T.: -0.011 min
 Response: 275039
 Conc: 200.14 ng/ml



#27 AR-1254-2

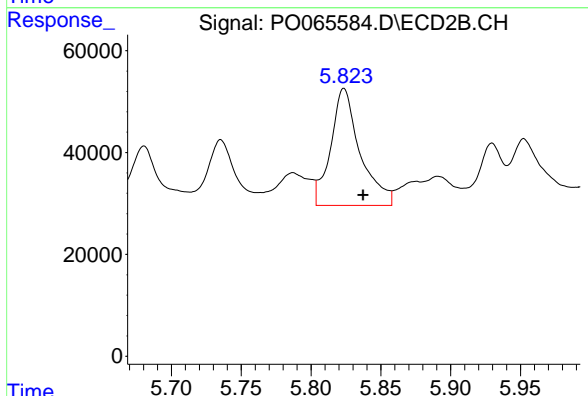
R.T.: 5.426 min
 Delta R.T.: -0.013 min
 Response: 251163
 Conc: 189.88 ng/ml



#28 AR-1254-3

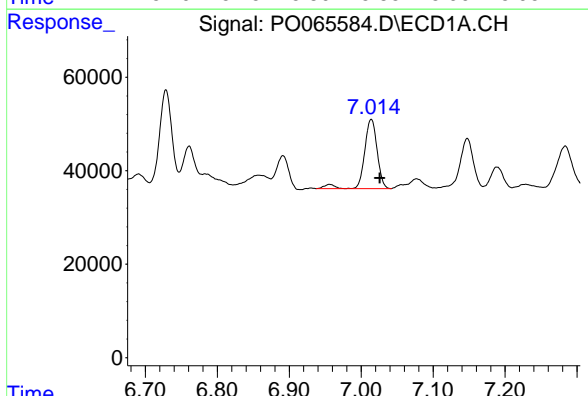
R.T.: 6.729 min
 Delta R.T.: -0.013 min
 Response: 248146
 Conc: 160.10 ng/ml

Instrument :
 ECD_O
 ClientSampleId :
 04-A-04-B-04-C



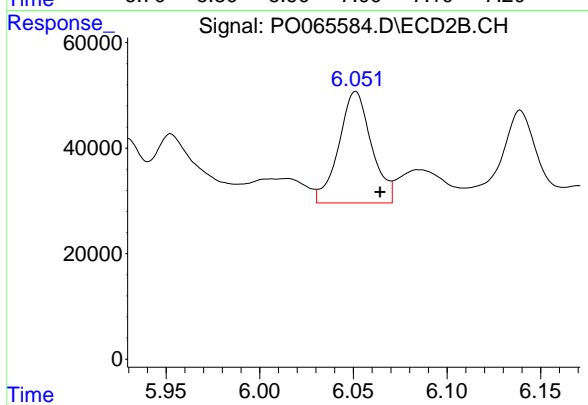
#28 AR-1254-3

R.T.: 5.824 min
 Delta R.T.: -0.014 min
 Response: 337014
 Conc: 149.55 ng/ml



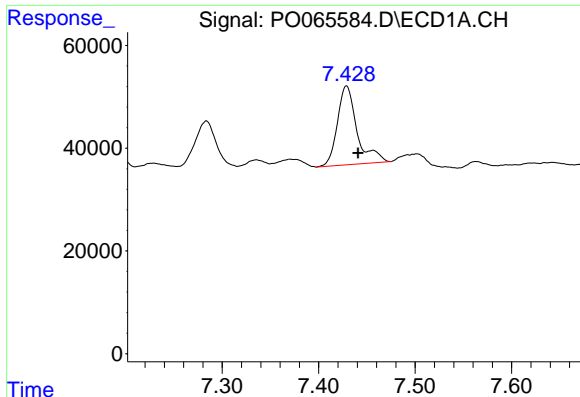
#29 AR-1254-4

R.T.: 7.014 min
 Delta R.T.: -0.012 min
 Response: 184690
 Conc: 144.89 ng/ml



#29 AR-1254-4

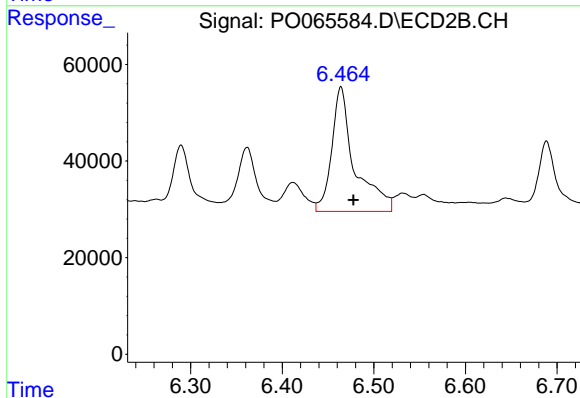
R.T.: 6.051 min
 Delta R.T.: -0.013 min
 Response: 257160
 Conc: 170.58 ng/ml



#30 AR-1254-5

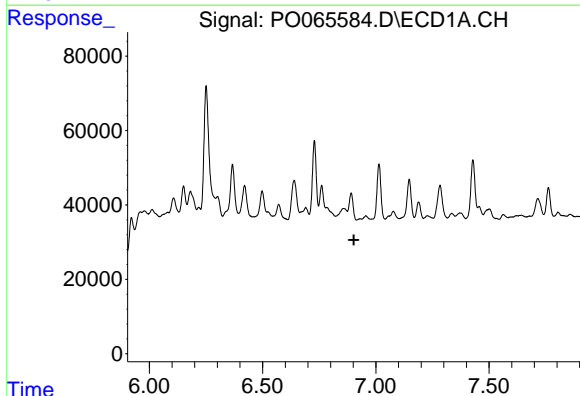
R.T.: 7.429 min
 Delta R.T.: -0.012 min
 Response: 217036
 Conc: 154.55 ng/ml

Instrument :
 ECD_O
 ClientSampleId :
 04-A-04-B-04-C



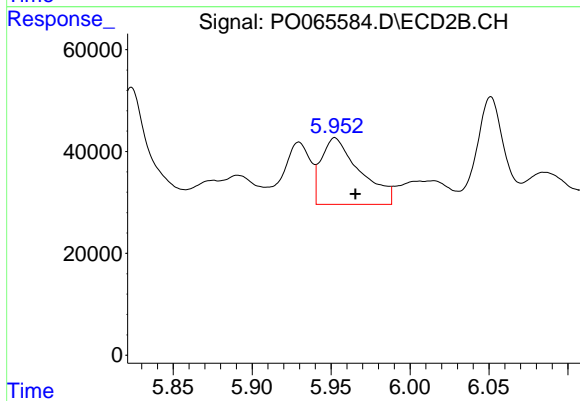
#30 AR-1254-5

R.T.: 6.464 min
 Delta R.T.: -0.014 min
 Response: 448360
 Conc: 201.43 ng/ml



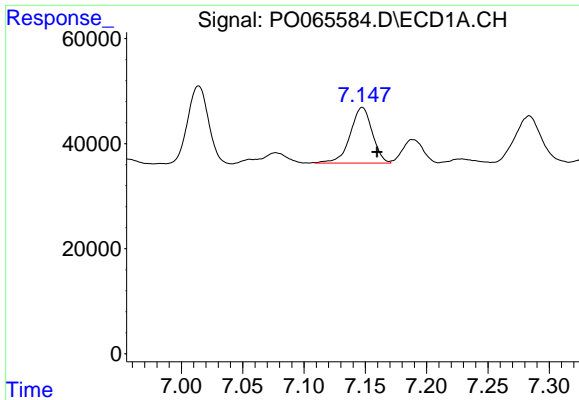
#31 AR-1260-1

R.T.: 0.000 min
 Exp R.T. : 6.903 min
 Response: 0
 Conc: N.D.



#31 AR-1260-1

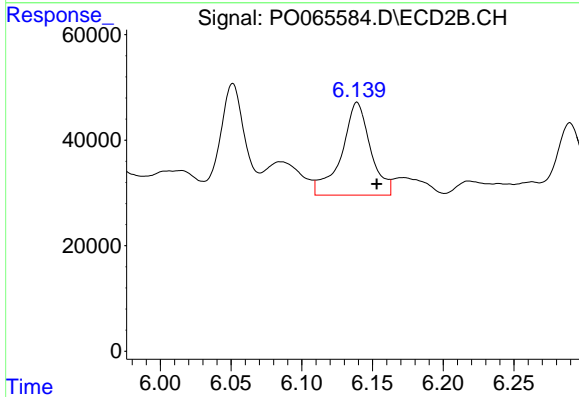
R.T.: 5.952 min
 Delta R.T.: -0.013 min
 Response: 223299
 Conc: 118.61 ng/ml



#32 AR-1260-2

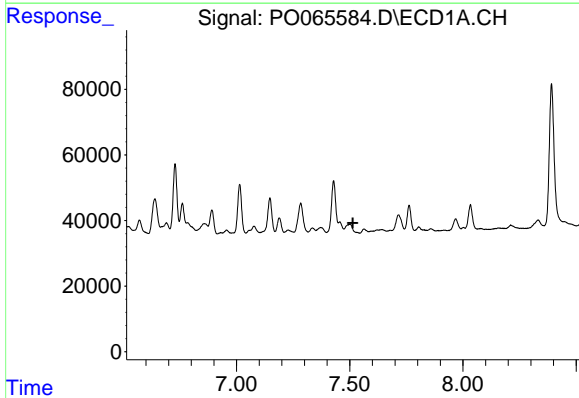
R.T.: 7.147 min
 Delta R.T.: -0.012 min
 Response: 132486
 Conc: 75.51 ng/ml

Instrument :
 ECD_O
 ClientSampleId :
 04-A-04-B-04-C



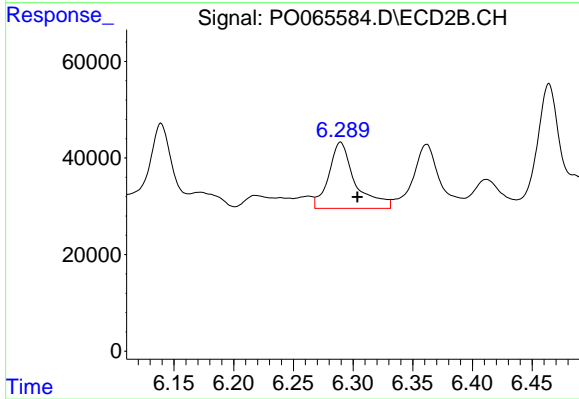
#32 AR-1260-2

R.T.: 6.139 min
 Delta R.T.: -0.014 min
 Response: 251351
 Conc: 103.46 ng/ml



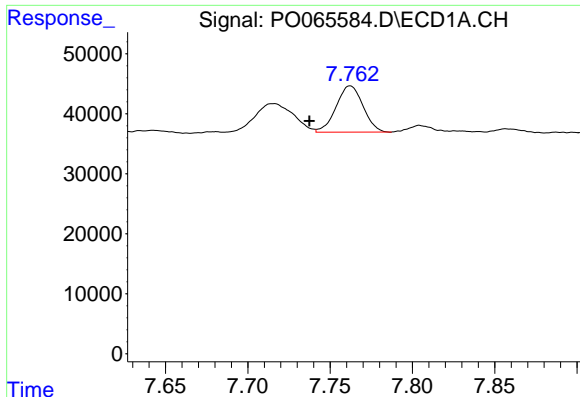
#33 AR-1260-3

R.T.: 0.000 min
 Exp R.T. : 7.514 min
 Response: 0
 Conc: N.D.



#33 AR-1260-3

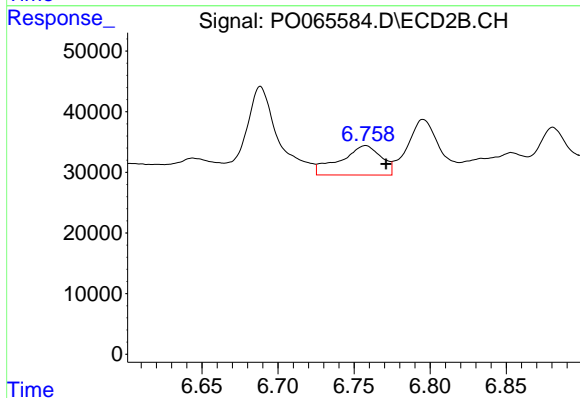
R.T.: 6.290 min
 Delta R.T.: -0.014 min
 Response: 210801
 Conc: 97.39 ng/ml



#34 AR-1260-4

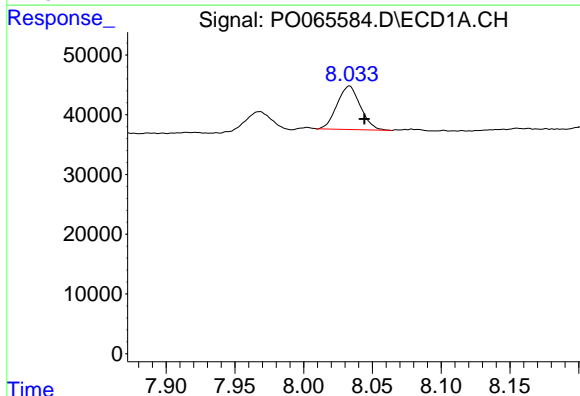
R.T.: 7.762 min
 Delta R.T.: 0.025 min
 Response: 87728
 Conc: 50.24 ng/ml

Instrument :
 ECD_O
 ClientSampleId :
 04-A-04-B-04-C



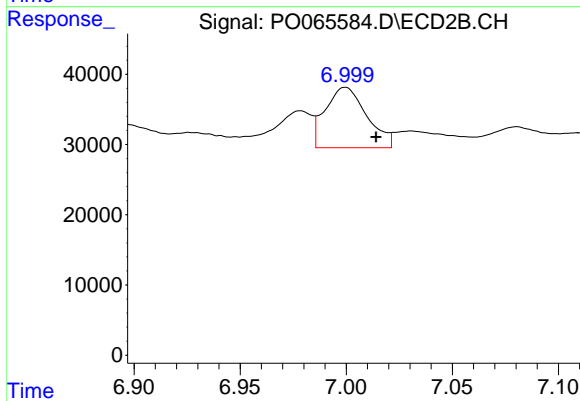
#34 AR-1260-4

R.T.: 6.758 min
 Delta R.T.: -0.013 min
 Response: 91012
 Conc: 45.36 ng/ml



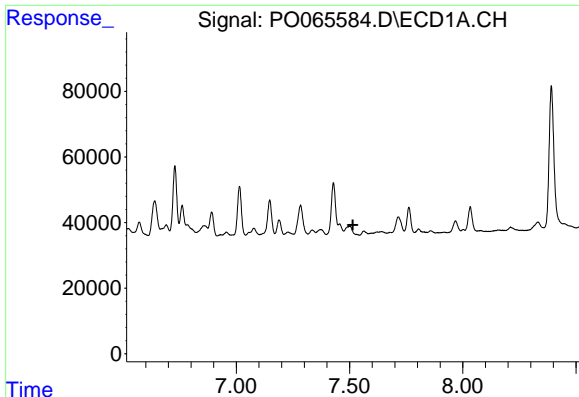
#35 AR-1260-5

R.T.: 8.033 min
 Delta R.T.: -0.011 min
 Response: 86101
 Conc: 25.67 ng/ml



#35 AR-1260-5

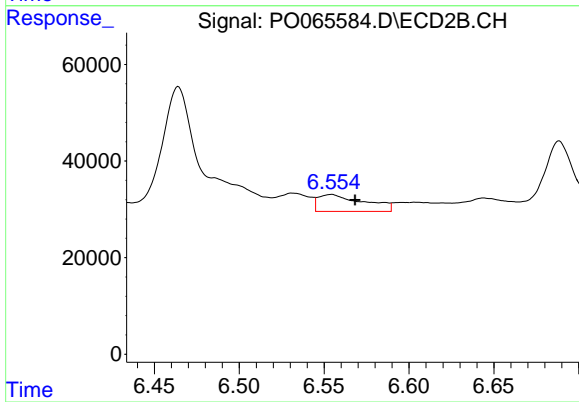
R.T.: 7.000 min
 Delta R.T.: -0.014 min
 Response: 116990
 Conc: 23.63 ng/ml



#36 AR-1262-1

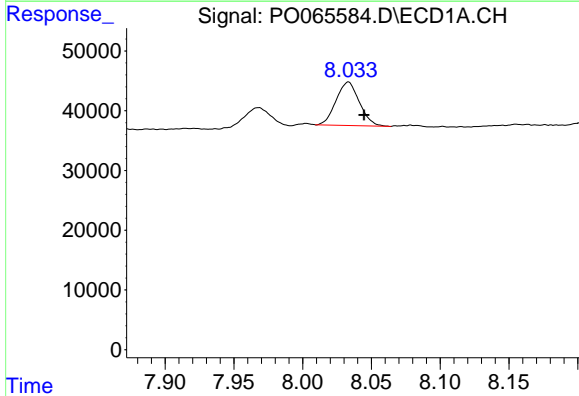
R.T.: 0.000 min
 Exp R.T.: 7.515 min
 Response: 0
 Conc: N.D.

Instrument :
 ECD_O
 ClientSampleId :
 04-A-04-B-04-C



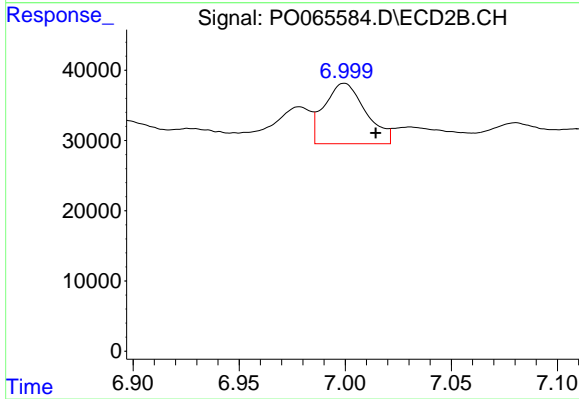
#36 AR-1262-1

R.T.: 6.554 min
 Delta R.T.: -0.014 min
 Response: 65685
 Conc: 69.67 ng/ml



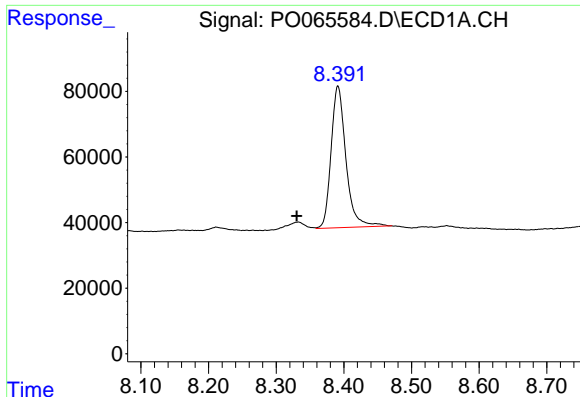
#37 AR-1262-2

R.T.: 8.033 min
 Delta R.T.: -0.012 min
 Response: 86101
 Conc: 26.89 ng/ml



#37 AR-1262-2

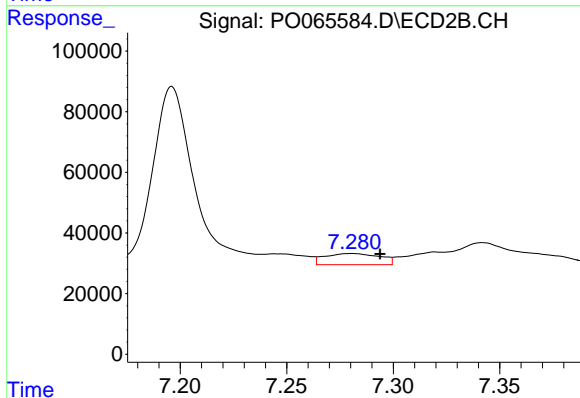
R.T.: 7.000 min
 Delta R.T.: -0.015 min
 Response: 116990
 Conc: 26.04 ng/ml



#38 AR-1262-3

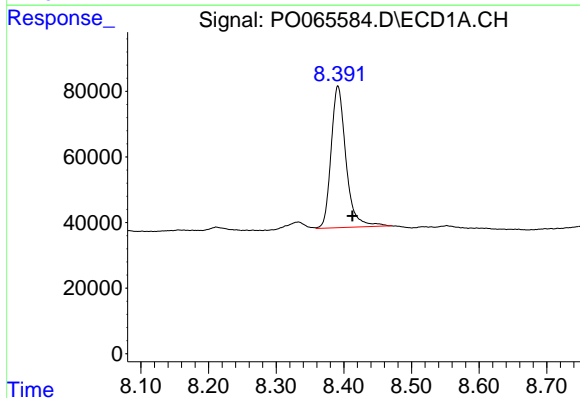
R.T.: 8.391 min
 Delta R.T.: 0.061 min
 Response: 658171
 Conc: 289.12 ng/ml

Instrument :
 ECD_O
 ClientSampleId :
 04-A-04-B-04-C



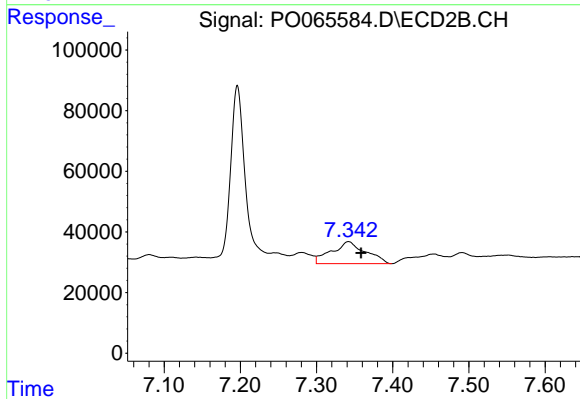
#38 AR-1262-3

R.T.: 7.281 min
 Delta R.T.: -0.013 min
 Response: 66306
 Conc: 39.40 ng/ml



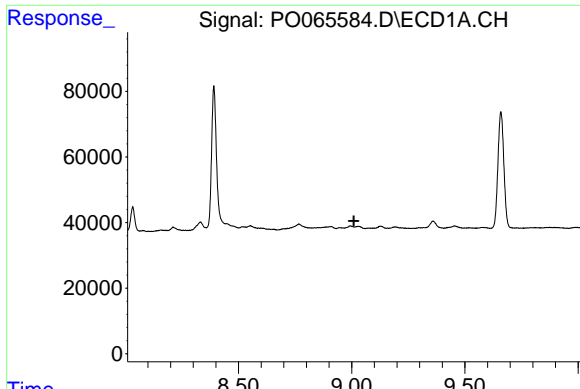
#39 AR-1262-4

R.T.: 8.391 min
 Delta R.T.: -0.021 min
 Response: 658171
 Conc: 372.33 ng/ml



#39 AR-1262-4

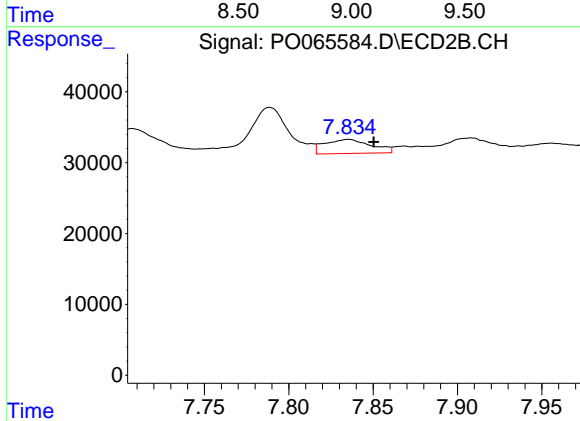
R.T.: 7.342 min
 Delta R.T.: -0.016 min
 Response: 226174
 Conc: 65.77 ng/ml



#40 AR-1262-5

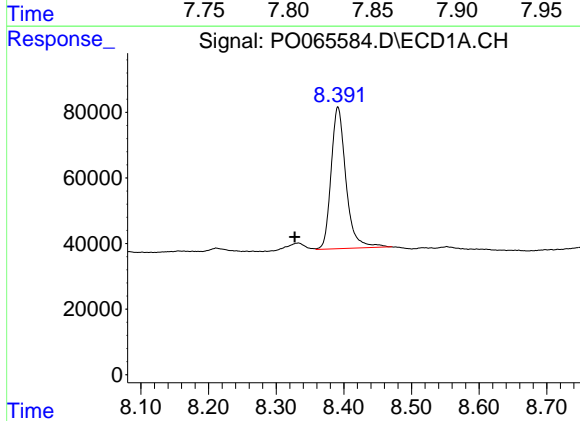
R.T.: 0.000 min
 Exp R.T.: 9.010 min
 Response: 0
 Conc: N.D.

Instrument :
 ECD_O
 ClientSampled :
 04-A-04-B-04-C



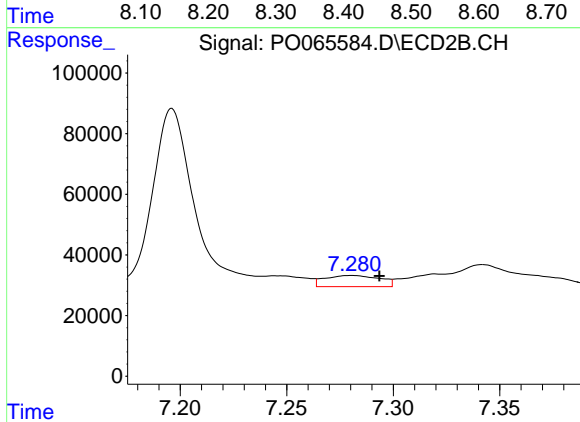
#40 AR-1262-5

R.T.: 7.835 min
 Delta R.T.: -0.015 min
 Response: 38058
 Conc: 22.32 ng/ml



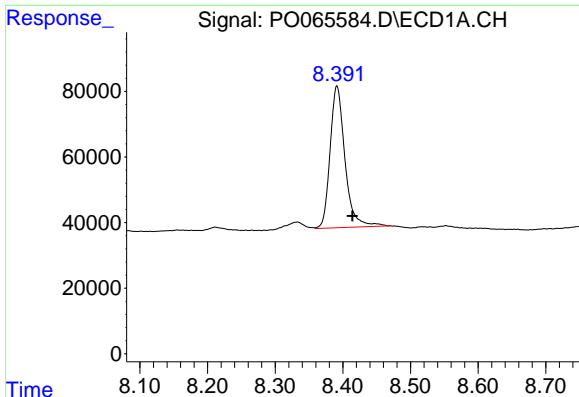
#41 AR-1268-1

R.T.: 8.391 min
 Delta R.T.: 0.064 min
 Response: 658171
 Conc: 161.78 ng/ml



#41 AR-1268-1

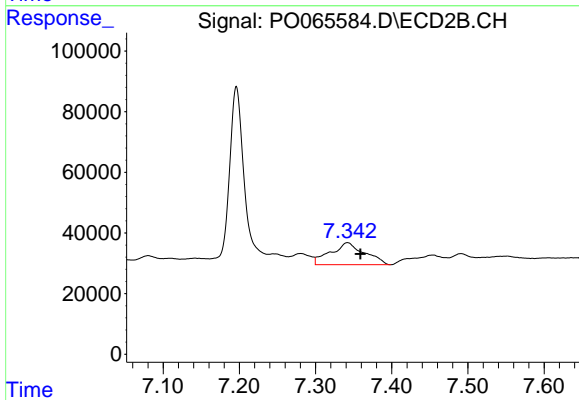
R.T.: 7.281 min
 Delta R.T.: -0.013 min
 Response: 66306
 Conc: 12.49 ng/ml



#42 AR-1268-2

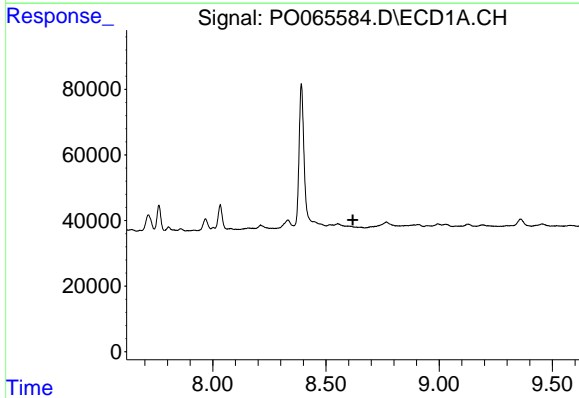
R.T.: 8.391 min
 Delta R.T.: -0.023 min
 Response: 658171
 Conc: 171.02 ng/ml

Instrument :
 ECD_O
 ClientSampleId :
 04-A-04-B-04-C



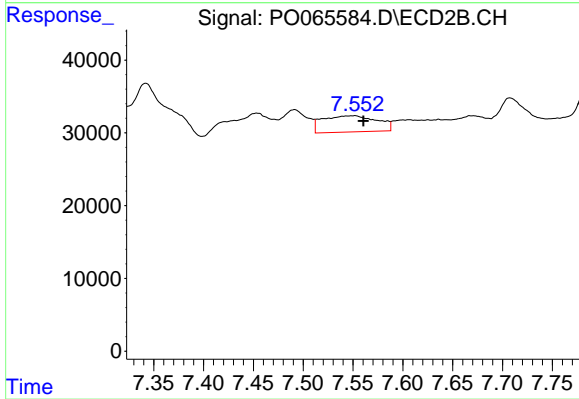
#42 AR-1268-2

R.T.: 7.342 min
 Delta R.T.: -0.017 min
 Response: 226174
 Conc: 44.53 ng/ml



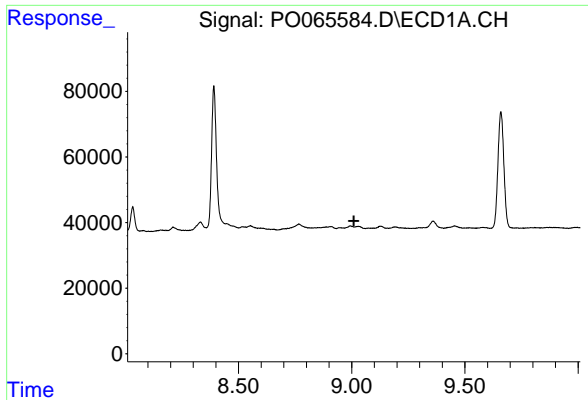
#43 AR-1268-3

R.T.: 0.000 min
 Exp R.T. : 8.619 min
 Response: 0
 Conc: N.D.



#43 AR-1268-3

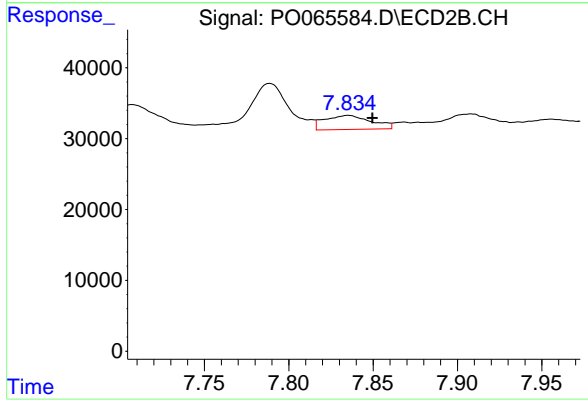
R.T.: 7.552 min
 Delta R.T.: -0.009 min
 Response: 84585
 Conc: 19.91 ng/ml



#44 AR-1268-4

R.T.: 0.000 min
 Exp R.T.: 9.010 min
 Response: 0
 Conc: N.D.

Instrument :
 ECD_O
 ClientSampled :
 04-A-04-B-04-C



#44 AR-1268-4

R.T.: 7.835 min
 Delta R.T.: -0.014 min
 Response: 38058
 Conc: 19.23 ng/ml