

Data Path : Z:\pestpcbsrv\HPCHEM1\ECD_O\Data\P0011623\
 Data File : P0092078.D
 Signal(s) : Signal #1: ECD1A.ch Signal #2: ECD2B.ch
 Acq On : 17 Jan 2023 06:09
 Operator : YP/AJ
 Sample : AR1242CCC500
 Misc :
 ALS Vial : 4 Sample Multiplier: 1

Instrument :
 ECD_O
 ClientSampleId :

Integration File signal 1: autoint1.e
 Integration File signal 2: autoint2.e
 Quant Time: Jan 17 07:46:21 2023
 Quant Method : Z:\pestpcbsrv\HPCHEM1\ECD_O\methods\P0011023.M
 Quant Title : GC EXTRACTABLES
 QLast Update : Wed Jan 11 04:41:00 2023
 Response via : Initial Calibration
 Integrator: ChemStation

Volume Inj. : 2 µl
 Signal #1 Phase : ZB-MR1 Signal #2 Phase: ZB-MR2
 Signal #1 Info : 30Mx0.32mmx 0.50µ Signal #2 Info : 30M x 0.32mm x 0.25µm

Compound	RT#1	RT#2	Resp#1	Resp#2	ng/ml	ng/ml
System Monitoring Compounds						
1) SA Tetrachlo...	4.446	3.647	128.4E6	62323062	46.017	44.889
2) SA Decachlor...	10.366	8.700	95239201	49473158	48.649	55.795
Target Compounds						
3) L1 AR-1016-1	5.632	4.737	32632012	17010635	383.934	389.626
4) L1 AR-1016-2	5.655	4.756	46081254	24223093	366.367	384.762
5) L1 AR-1016-3	5.718	4.933	29492451	13494918	370.777	402.492
6) L1 AR-1016-4	5.818	4.975	22380725	11453365	364.236	385.566
7) L1 AR-1016-5	6.119	5.189	24247550	15418849	372.742	418.374
8) L2 AR-1221-1	4.652	3.861	4220978	2246108	119.446	126.909
9) L2 AR-1221-2	4.745	3.947	6102466	3082240	240.261	235.982
10) L2 AR-1221-3	4.821	4.024	21467906	11121210	276.632	286.797
11) L3 AR-1232-1	4.821	4.024	21467906	11121210	320.363	325.809
12) L3 AR-1232-2	5.359	4.756	27734928	24223093	854.595	836.986
13) L3 AR-1232-3	5.655	4.933	46081254	13494918	803.962	894.086
14) L3 AR-1232-4	5.818	5.017	22380725	14759175	828.112	979.599
15) L3 AR-1232-5	5.912	5.189	20946641	15418849	873.105	942.863
16) L4 AR-1242-1	5.632	4.737	32632012	17010635	457.292	455.675
17) L4 AR-1242-2	5.655	4.756	46081254	24223093	436.116	455.766
18) L4 AR-1242-3	5.718	4.933	29492451	13494918	437.577	471.640
19) L4 AR-1242-4	5.818	5.017	22380725	14759175	431.760	480.146
20) L4 AR-1242-5	6.569	5.543	23191727	16911873	458.057	512.814
21) L5 AR-1248-1	5.632	4.737	32632012	17010635	596.232	596.480
22) L5 AR-1248-2	5.912	4.975	20946641	11453365	242.163	258.223
23) L5 AR-1248-3	6.119	5.017	24247550	14759175	263.556	323.962
24) L5 AR-1248-4	6.530	5.189	22264029	15418849	250.302	295.709
25) L5 AR-1248-5	6.569	5.584	23191727	14335642	268.081	324.130
26) L6 AR-1254-1	6.502	5.543	16844348	16911873	162.808	229.067 #
27) L6 AR-1254-2	6.730	5.691	20731313	5160597	136.768	78.975 #
28) L6 AR-1254-3	7.100	6.098	8774676	5443940	58.680	56.087
29) L6 AR-1254-4	7.393	6.328	7085208	3839728	74.548	79.226
30) L6 AR-1254-5	7.821	6.749	1327621	1297540	10.702	16.850 #
31) L7 AR-1260-1	7.225f	6.243	4066412	2042480	33.868	31.410
32) L7 AR-1260-2	7.532	6.418	2058476	498221	16.024	6.802 #
33) L7 AR-1260-3	0.000	6.571	0	811071	N.D.	11.340 #
34) L7 AR-1260-4	8.113	7.085	795873	354005	6.893	6.570
36) L8 AR-1262-1	0.000	6.749f	0	1297540	N.D.	16.937 #
39) L8 AR-1262-4	8.859	0.000	1690357	0	20.056	N.D. #
40) L8 AR-1262-5	0.000	8.147	0	390676	N.D.	10.722 #
42) L9 AR-1268-2	8.859	0.000	1690357	0	5.815	N.D. #
44) L9 AR-1268-4	0.000	8.147	0	390676	N.D.	8.249 #
45) L9 AR-1268-5	0.000	8.437	0	375977	N.D.	1.009 #

Data Path : Z:\pestpcbsrv\HPCHEM1\ECD_0\Data\P0011623\
Data File : P0092078.D
Signal(s) : Signal #1: ECD1A.ch Signal #2: ECD2B.ch
Acq On : 17 Jan 2023 06:09
Operator : YP/AJ
Sample : AR1242CCC500
Misc :
ALS Vial : 4 Sample Multiplier: 1

Instrument :
ECD_0
ClientSampleId :

Integration File signal 1: autoint1.e
Integration File signal 2: autoint2.e
Quant Time: Jan 17 07:46:21 2023
Quant Method : Z:\pestpcbsrv\HPCHEM1\ECD_0\methods\P0011023.M
Quant Title : GC EXTRACTABLES
QLast Update : Wed Jan 11 04:41:00 2023
Response via : Initial Calibration
Integrator: ChemStation

Volume Inj. : 2 µl
Signal #1 Phase : ZB-MR1 Signal #2 Phase: ZB-MR2
Signal #1 Info : 30Mx0.32mmx 0.50µ Signal #2 Info : 30M x 0.32mm x 0.25µm

Compound	RT#1	RT#2	Resp#1	Resp#2	ng/ml	ng/ml
----------	------	------	--------	--------	-------	-------

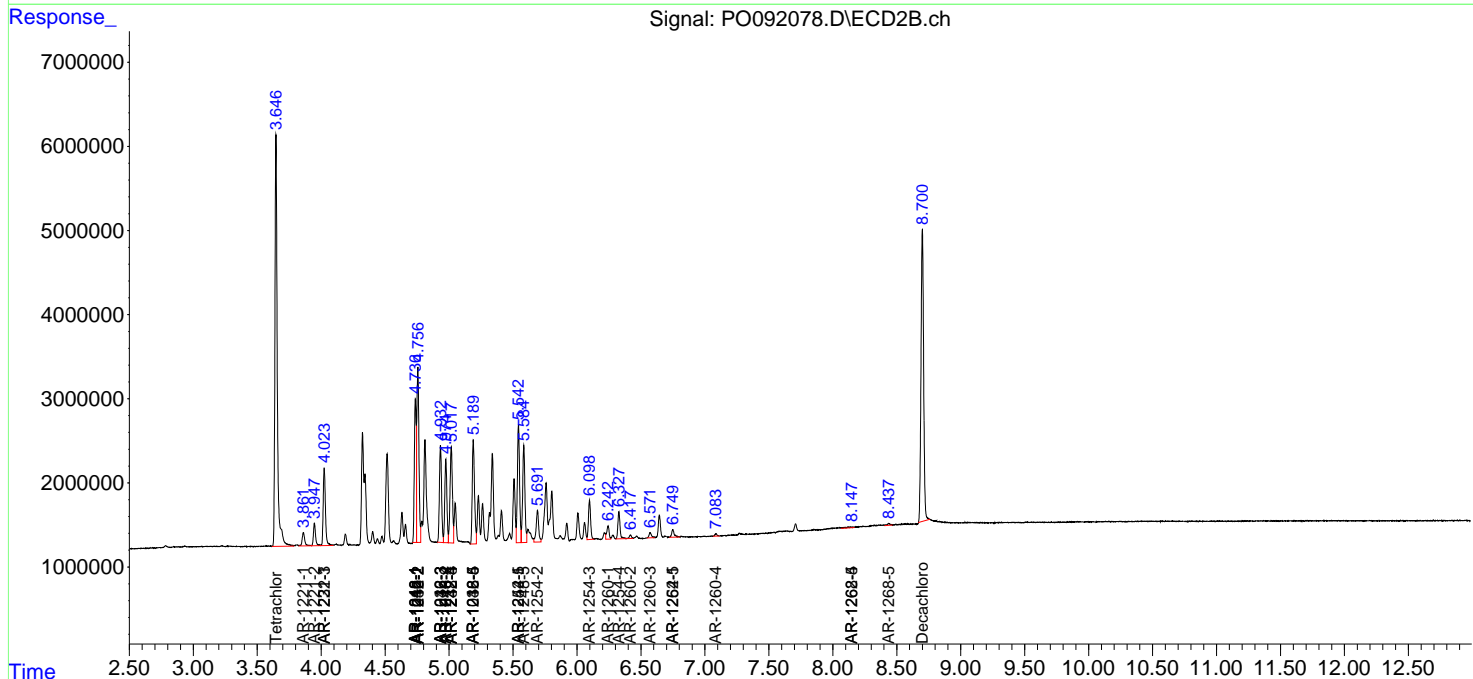
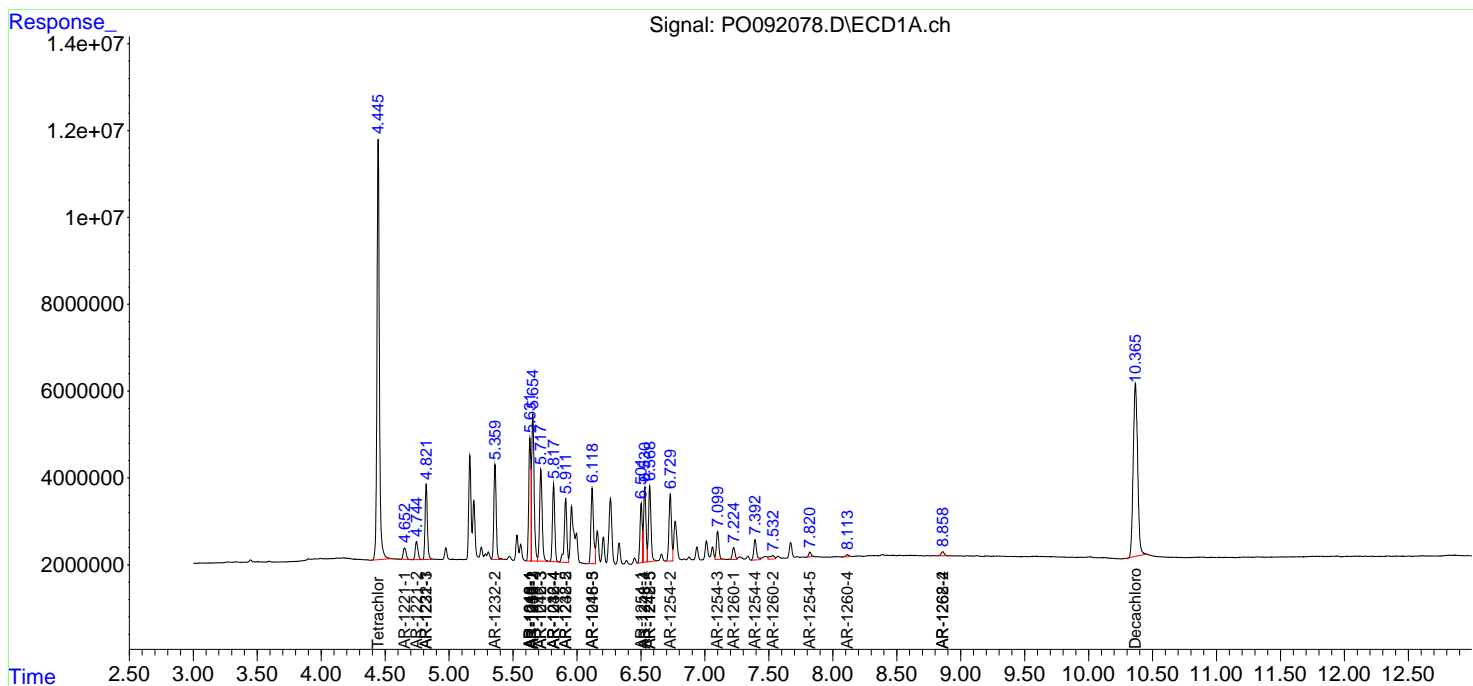
(f)=RT Delta > 1/2 Window (#)=Amounts differ by > 25% (m)=manual int.

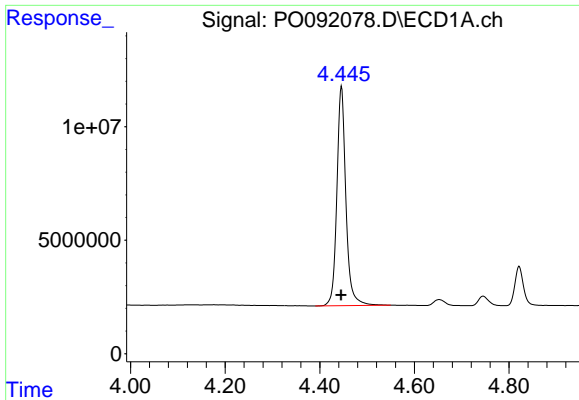
Data Path : Z:\pestpcbsrv\HPCHEM1\ECD_O\Data\PO011623\
 Data File : PO092078.D
 Signal(s) : Signal #1: ECD1A.ch Signal #2: ECD2B.ch
 Acq On : 17 Jan 2023 06:09
 Operator : YP/AJ
 Sample : AR1242CCC500
 Misc :
 ALS Vial : 4 Sample Multiplier: 1

Instrument :
 ECD_O
 ClientSampleId :

Integration File signal 1: autoint1.e
 Integration File signal 2: autoint2.e
 Quant Time: Jan 17 07:46:21 2023
 Quant Method : Z:\pestpcbsrv\HPCHEM1\ECD_O\methods\PO011023.M
 Quant Title : GC EXTRACTABLES
 QLast Update : Wed Jan 11 04:41:00 2023
 Response via : Initial Calibration
 Integrator: ChemStation

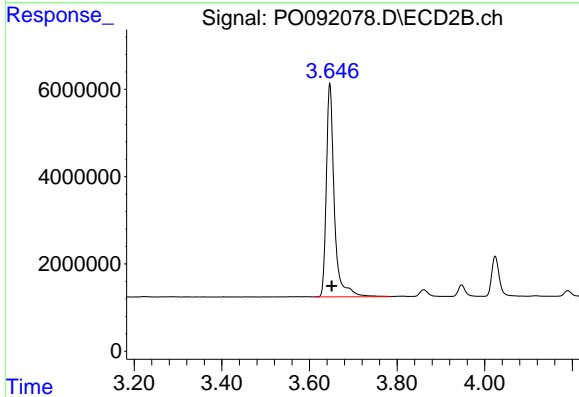
Volume Inj. : 2 µl
 Signal #1 Phase : ZB-MR1 Signal #2 Phase: ZB-MR2
 Signal #1 Info : 30Mx0.32mmx 0.50µ Signal #2 Info : 30M x 0.32mm x 0.25µm



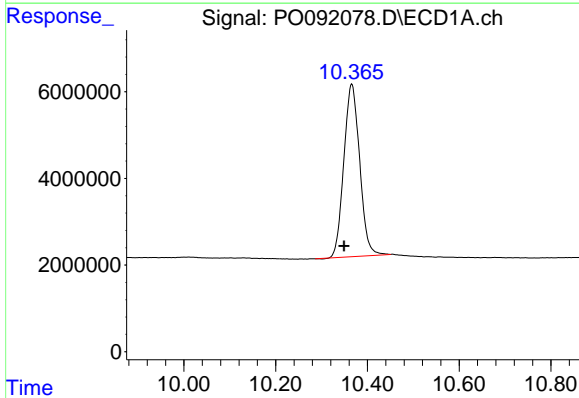


#1 Tetrachloro-m-xylene
 R.T.: 4.446 min
 Delta R.T.: 0.000 min
 Response: 128351961
 Conc: 46.02 ng/ml

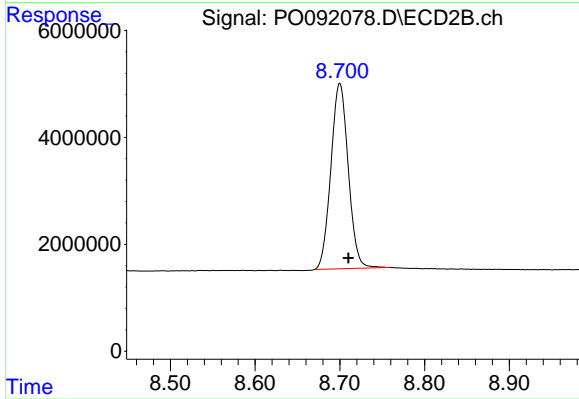
Instrument :
 ECD_O
 ClientSampleId :



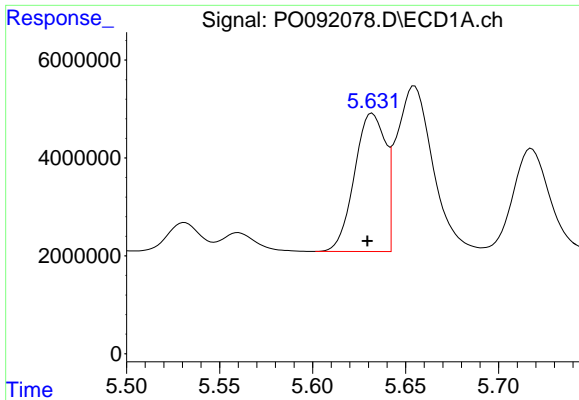
#1 Tetrachloro-m-xylene
 R.T.: 3.647 min
 Delta R.T.: -0.004 min
 Response: 62323062
 Conc: 44.89 ng/ml



#2 Decachlorobiphenyl
 R.T.: 10.366 min
 Delta R.T.: 0.017 min
 Response: 95239201
 Conc: 48.65 ng/ml



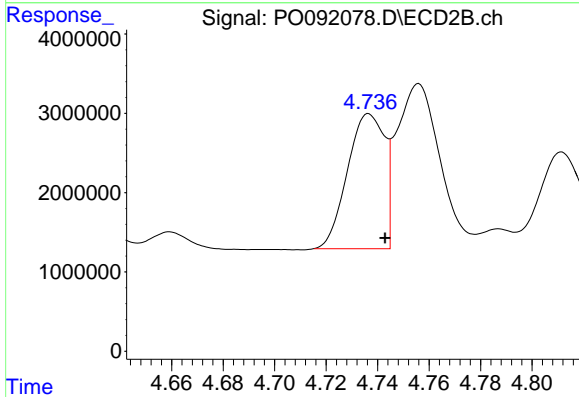
#2 Decachlorobiphenyl
 R.T.: 8.700 min
 Delta R.T.: -0.010 min
 Response: 49473158
 Conc: 55.80 ng/ml



#3 AR-1016-1

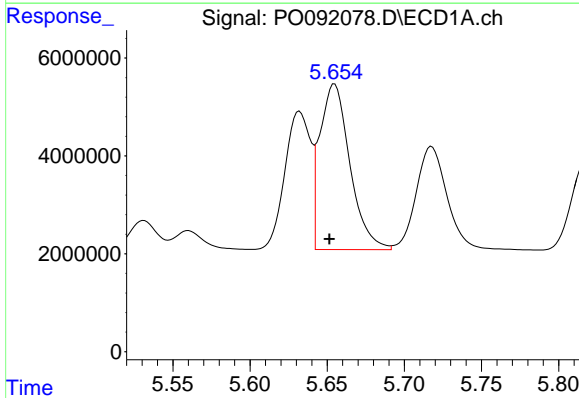
R.T.: 5.632 min
 Delta R.T.: 0.003 min
 Response: 32632012
 Conc: 383.93 ng/ml

Instrument :
 ECD_O
 ClientSampleId :



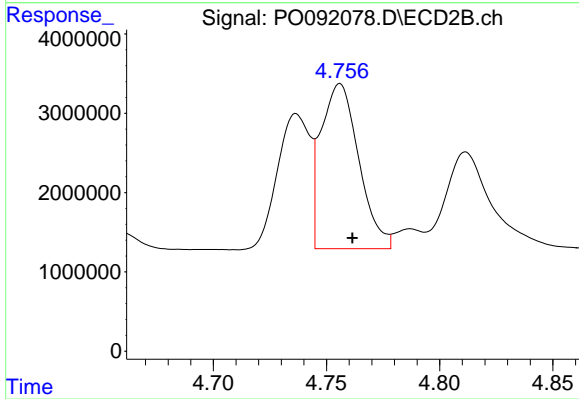
#3 AR-1016-1

R.T.: 4.737 min
 Delta R.T.: -0.006 min
 Response: 17010635
 Conc: 389.63 ng/ml



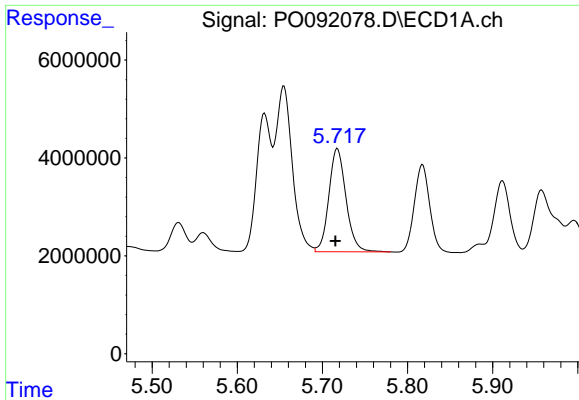
#4 AR-1016-2

R.T.: 5.655 min
 Delta R.T.: 0.003 min
 Response: 46081254
 Conc: 366.37 ng/ml



#4 AR-1016-2

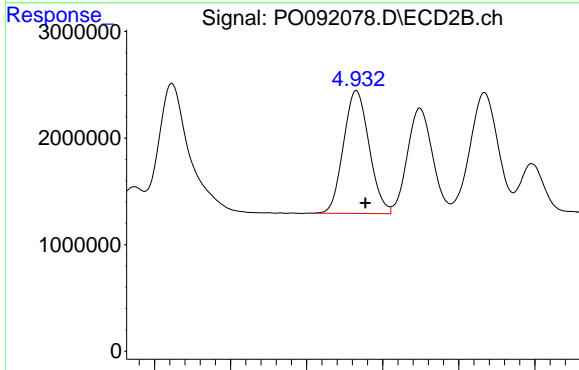
R.T.: 4.756 min
 Delta R.T.: -0.005 min
 Response: 24223093
 Conc: 384.76 ng/ml



#5 AR-1016-3

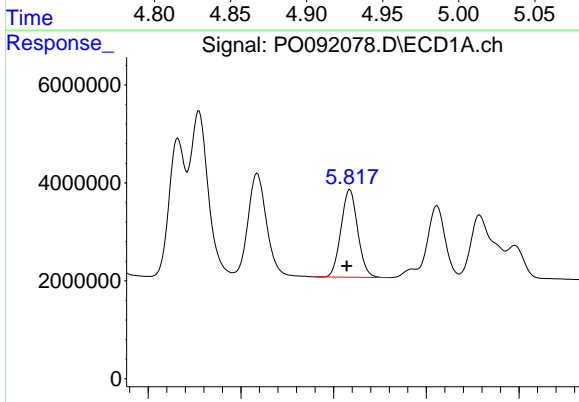
R.T.: 5.718 min
 Delta R.T.: 0.002 min
 Response: 29492451
 Conc: 370.78 ng/ml

Instrument :
 ECD_O
 ClientSampleId :



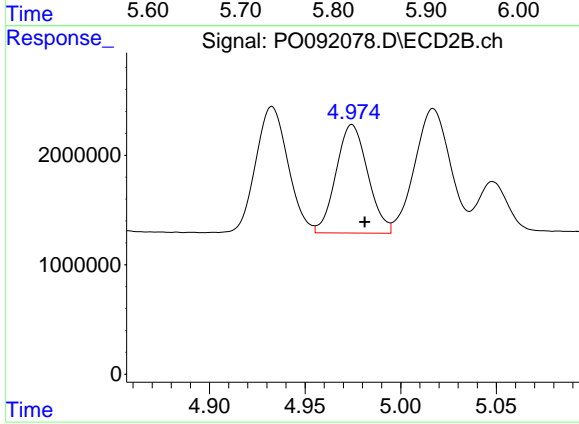
#5 AR-1016-3

R.T.: 4.933 min
 Delta R.T.: -0.006 min
 Response: 13494918
 Conc: 402.49 ng/ml



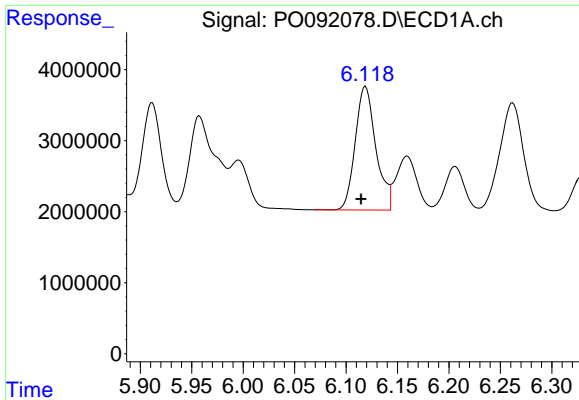
#6 AR-1016-4

R.T.: 5.818 min
 Delta R.T.: 0.004 min
 Response: 22380725
 Conc: 364.24 ng/ml



#6 AR-1016-4

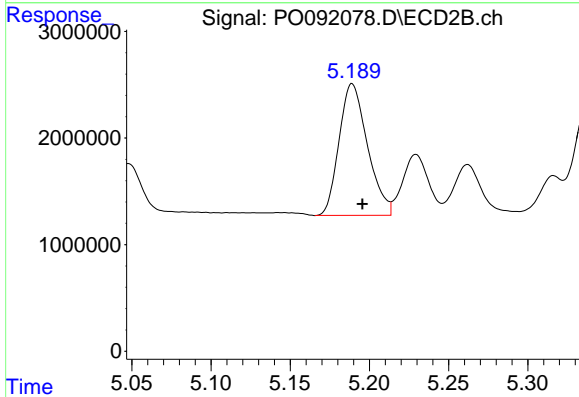
R.T.: 4.975 min
 Delta R.T.: -0.007 min
 Response: 11453365
 Conc: 385.57 ng/ml



#7 AR-1016-5

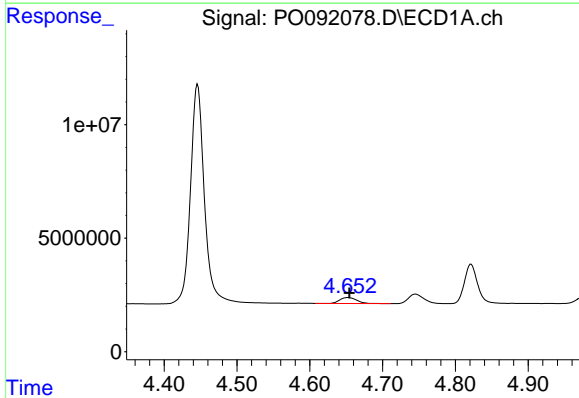
R.T.: 6.119 min
 Delta R.T.: 0.004 min
 Response: 24247550
 Conc: 372.74 ng/ml

Instrument :
 ECD_O
 ClientSampleId :



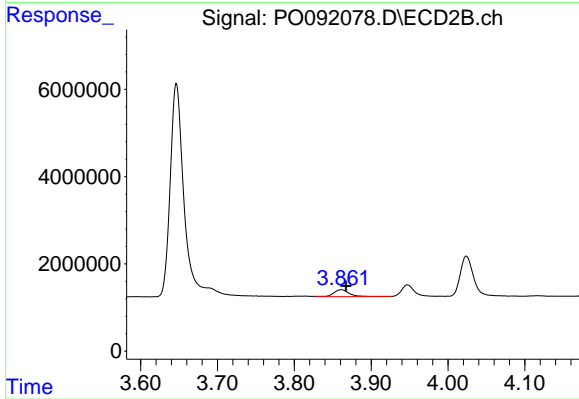
#7 AR-1016-5

R.T.: 5.189 min
 Delta R.T.: -0.006 min
 Response: 15418849
 Conc: 418.37 ng/ml



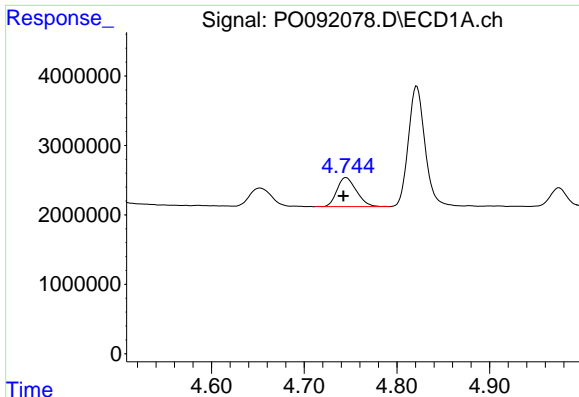
#8 AR-1221-1

R.T.: 4.652 min
 Delta R.T.: -0.002 min
 Response: 4220978
 Conc: 119.45 ng/ml



#8 AR-1221-1

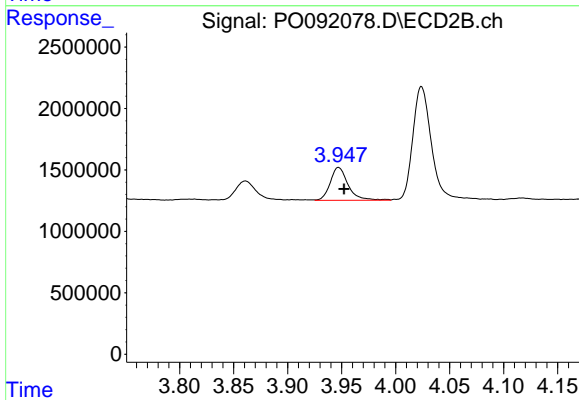
R.T.: 3.861 min
 Delta R.T.: -0.006 min
 Response: 2246108
 Conc: 126.91 ng/ml



#9 AR-1221-2

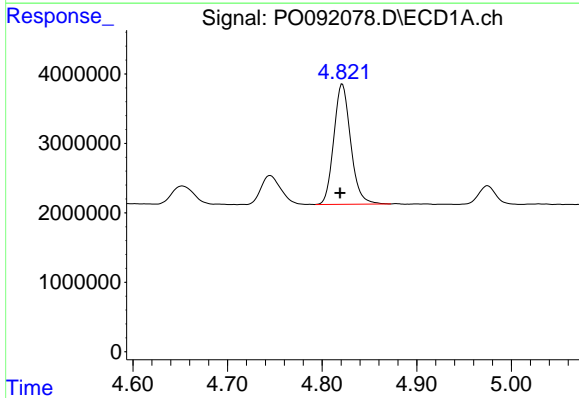
R.T.: 4.745 min
 Delta R.T.: 0.003 min
 Response: 6102466
 Conc: 240.26 ng/ml

Instrument :
 ECD_O
 ClientSampleId :



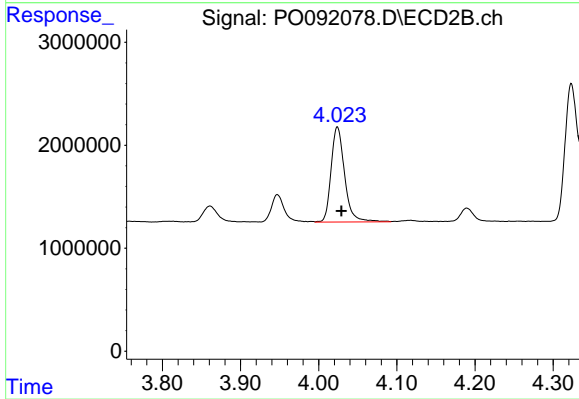
#9 AR-1221-2

R.T.: 3.947 min
 Delta R.T.: -0.005 min
 Response: 3082240
 Conc: 235.98 ng/ml



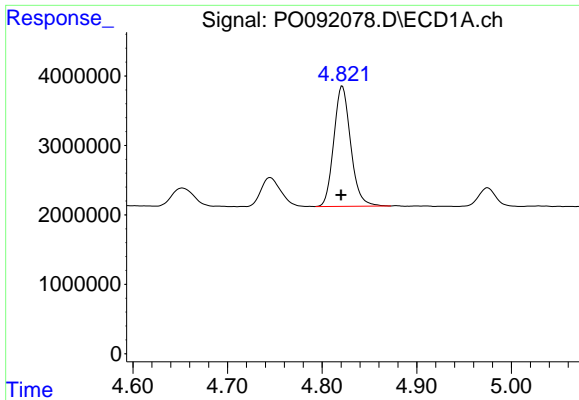
#10 AR-1221-3

R.T.: 4.821 min
 Delta R.T.: 0.002 min
 Response: 21467906
 Conc: 276.63 ng/ml



#10 AR-1221-3

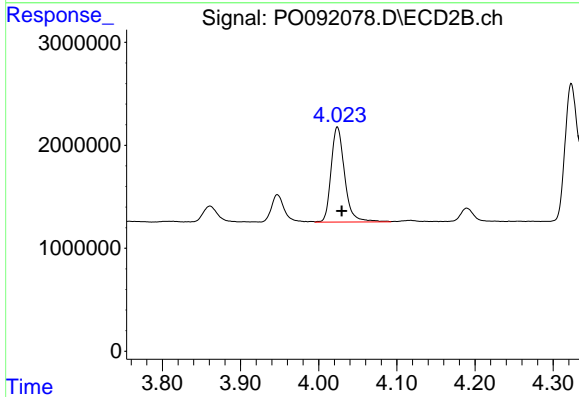
R.T.: 4.024 min
 Delta R.T.: -0.005 min
 Response: 11121210
 Conc: 286.80 ng/ml



#11 AR-1232-1

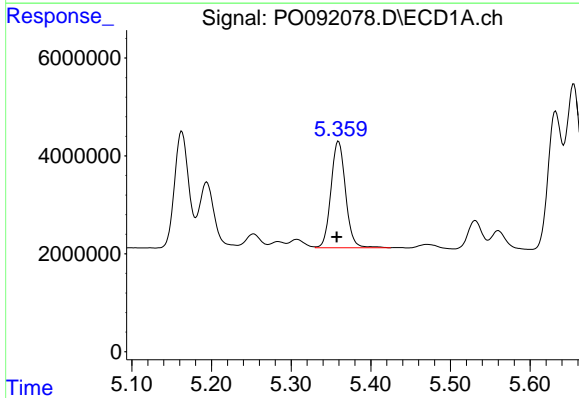
R.T.: 4.821 min
 Delta R.T.: 0.001 min
 Response: 21467906
 Conc: 320.36 ng/ml

Instrument :
 ECD_O
 ClientSampleId :



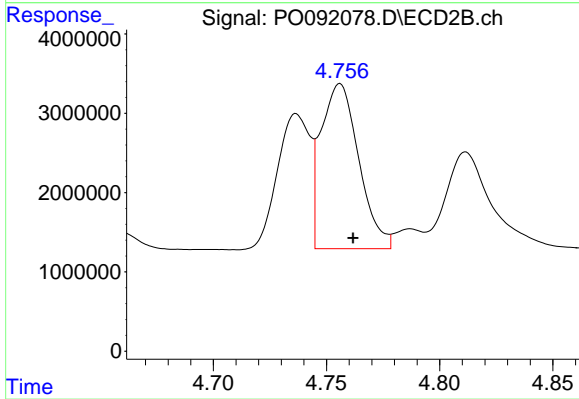
#11 AR-1232-1

R.T.: 4.024 min
 Delta R.T.: -0.006 min
 Response: 11121210
 Conc: 325.81 ng/ml



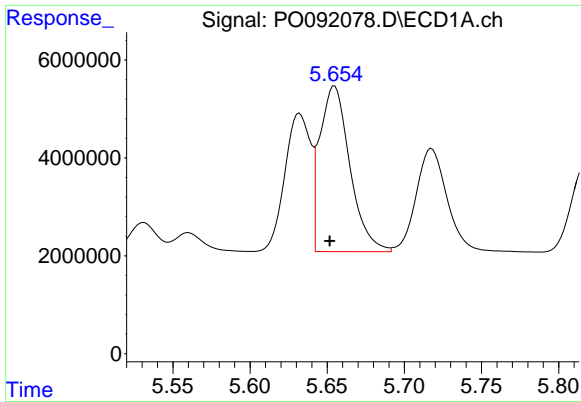
#12 AR-1232-2

R.T.: 5.359 min
 Delta R.T.: 0.002 min
 Response: 27734928
 Conc: 854.59 ng/ml



#12 AR-1232-2

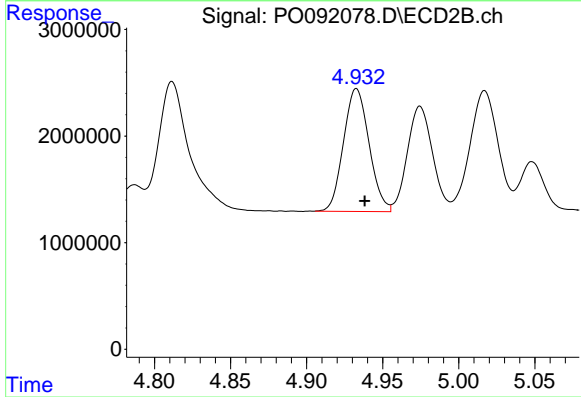
R.T.: 4.756 min
 Delta R.T.: -0.006 min
 Response: 24223093
 Conc: 836.99 ng/ml



#13 AR-1232-3

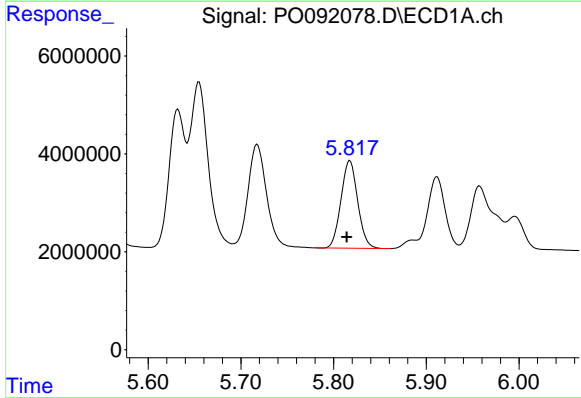
R.T.: 5.655 min
 Delta R.T.: 0.003 min
 Response: 46081254
 Conc: 803.96 ng/ml

Instrument :
 ECD_O
 ClientSampleId :



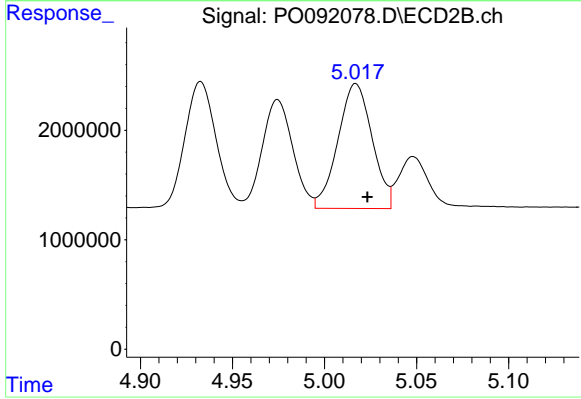
#13 AR-1232-3

R.T.: 4.933 min
 Delta R.T.: -0.005 min
 Response: 13494918
 Conc: 894.09 ng/ml



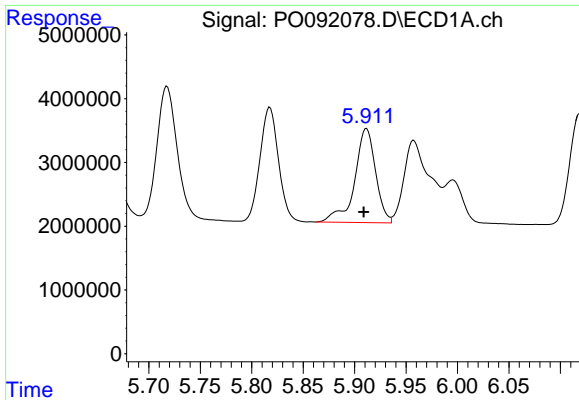
#14 AR-1232-4

R.T.: 5.818 min
 Delta R.T.: 0.003 min
 Response: 22380725
 Conc: 828.11 ng/ml



#14 AR-1232-4

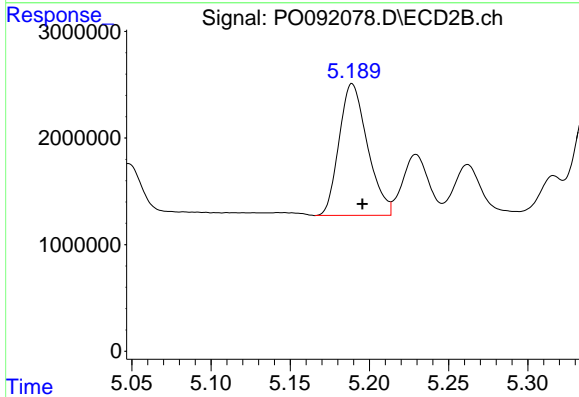
R.T.: 5.017 min
 Delta R.T.: -0.006 min
 Response: 14759175
 Conc: 979.60 ng/ml



#15 AR-1232-5

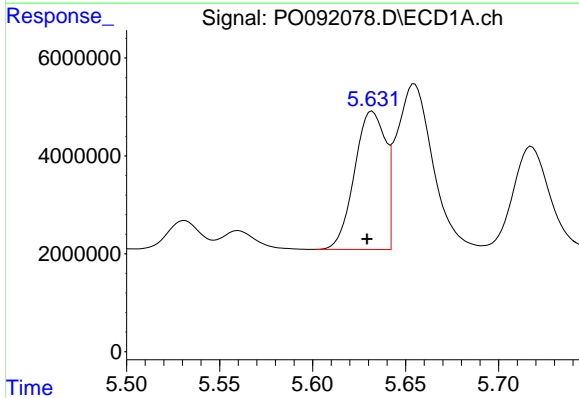
R.T.: 5.912 min
 Delta R.T.: 0.003 min
 Response: 20946641
 Conc: 873.11 ng/ml

Instrument :
 ECD_O
 ClientSampleId :



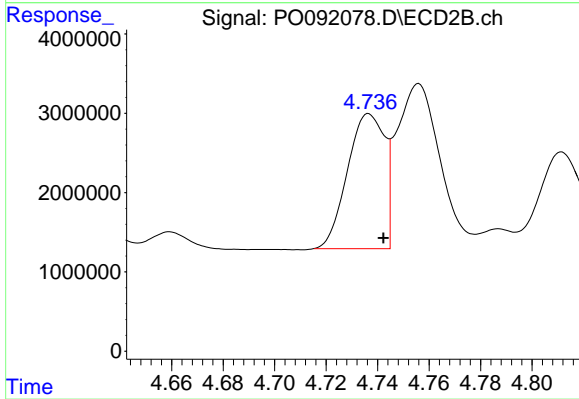
#15 AR-1232-5

R.T.: 5.189 min
 Delta R.T.: -0.006 min
 Response: 15418849
 Conc: 942.86 ng/ml



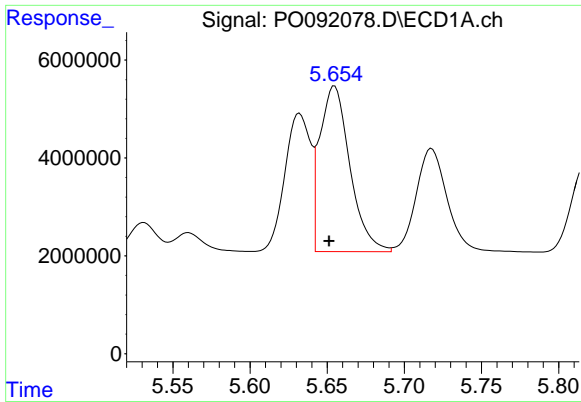
#16 AR-1242-1

R.T.: 5.632 min
 Delta R.T.: 0.003 min
 Response: 32632012
 Conc: 457.29 ng/ml



#16 AR-1242-1

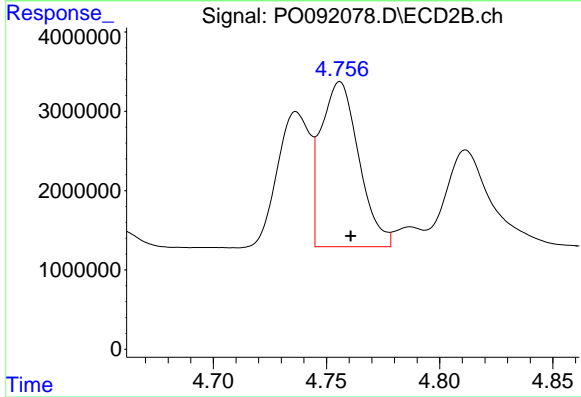
R.T.: 4.737 min
 Delta R.T.: -0.006 min
 Response: 17010635
 Conc: 455.68 ng/ml



#17 AR-1242-2

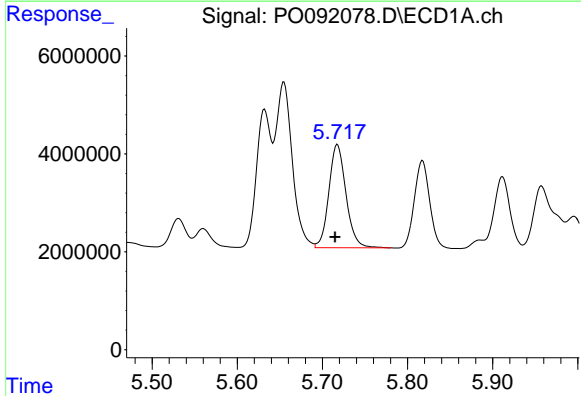
R.T.: 5.655 min
 Delta R.T.: 0.003 min
 Response: 46081254
 Conc: 436.12 ng/ml

Instrument :
 ECD_O
 ClientSampleId :



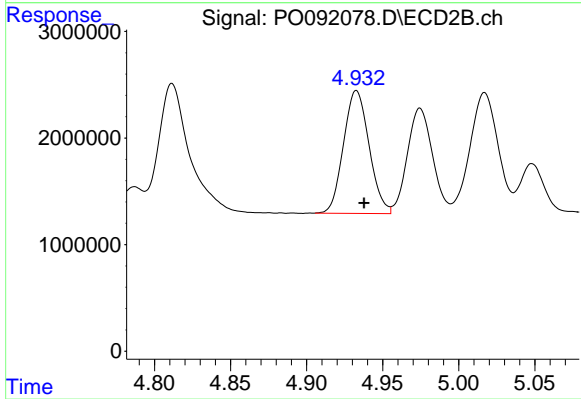
#17 AR-1242-2

R.T.: 4.756 min
 Delta R.T.: -0.005 min
 Response: 24223093
 Conc: 455.77 ng/ml



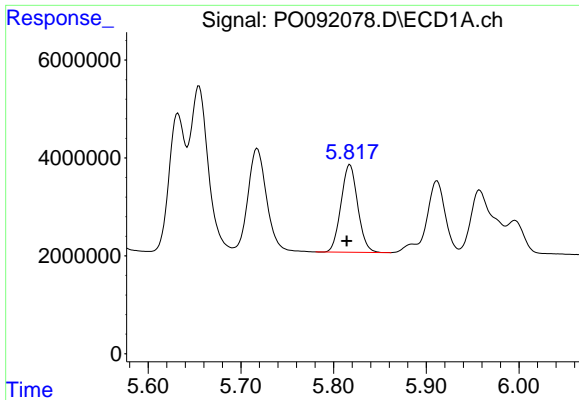
#18 AR-1242-3

R.T.: 5.718 min
 Delta R.T.: 0.003 min
 Response: 29492451
 Conc: 437.58 ng/ml



#18 AR-1242-3

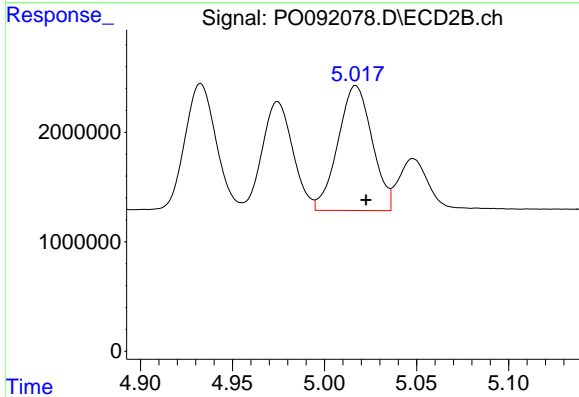
R.T.: 4.933 min
 Delta R.T.: -0.005 min
 Response: 13494918
 Conc: 471.64 ng/ml



#19 AR-1242-4

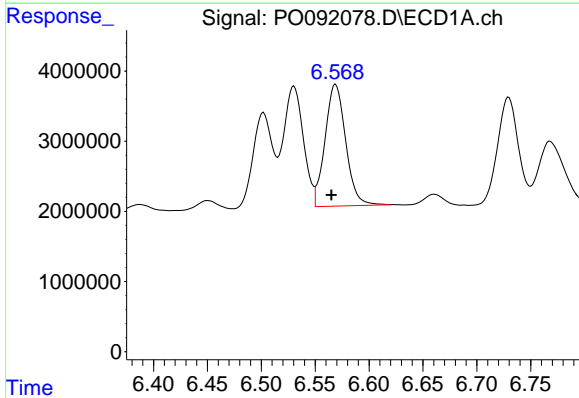
R.T.: 5.818 min
 Delta R.T.: 0.003 min
 Response: 22380725
 Conc: 431.76 ng/ml

Instrument :
 ECD_O
 ClientSampleId :



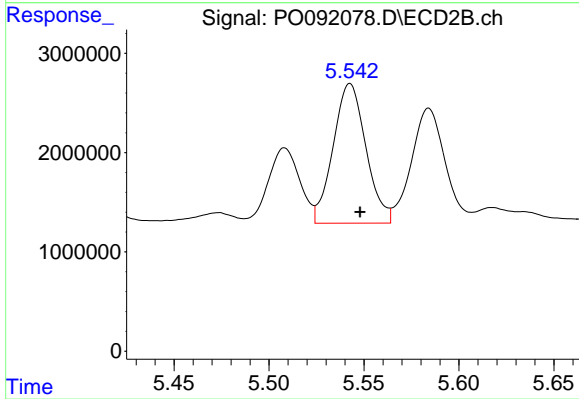
#19 AR-1242-4

R.T.: 5.017 min
 Delta R.T.: -0.006 min
 Response: 14759175
 Conc: 480.15 ng/ml



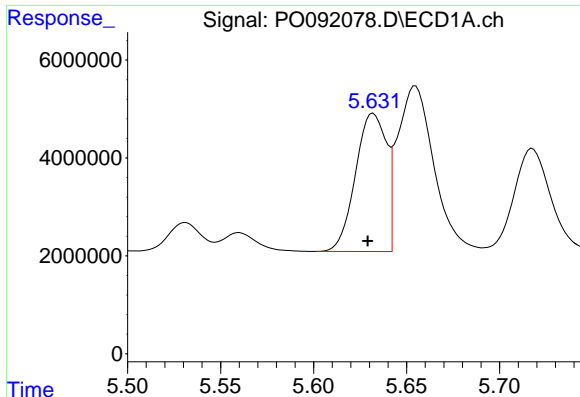
#20 AR-1242-5

R.T.: 6.569 min
 Delta R.T.: 0.004 min
 Response: 23191727
 Conc: 458.06 ng/ml



#20 AR-1242-5

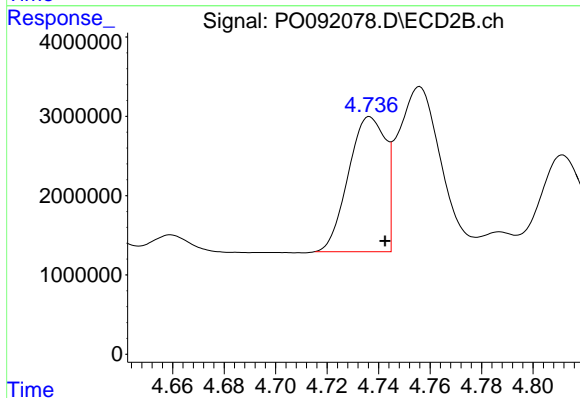
R.T.: 5.543 min
 Delta R.T.: -0.005 min
 Response: 16911873
 Conc: 512.81 ng/ml



#21 AR-1248-1

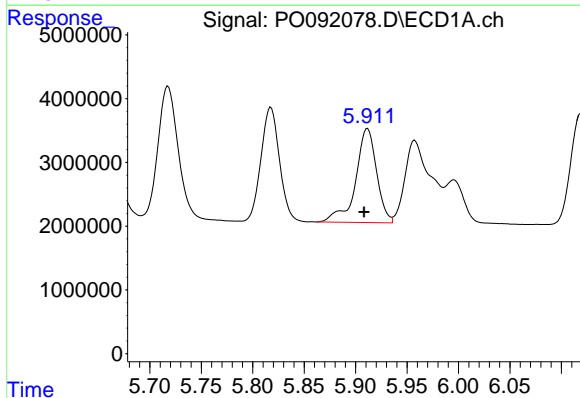
R.T.: 5.632 min
 Delta R.T.: 0.003 min
 Response: 32632012
 Conc: 596.23 ng/ml

Instrument :
 ECD_O
 ClientSampleId :



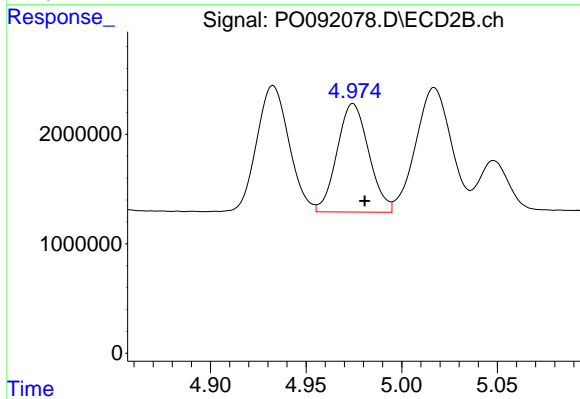
#21 AR-1248-1

R.T.: 4.737 min
 Delta R.T.: -0.006 min
 Response: 17010635
 Conc: 596.48 ng/ml



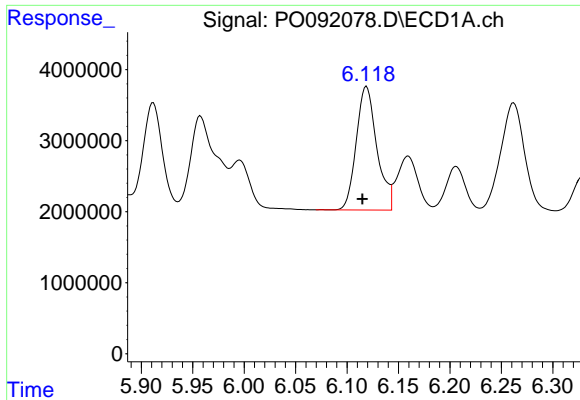
#22 AR-1248-2

R.T.: 5.912 min
 Delta R.T.: 0.003 min
 Response: 20946641
 Conc: 242.16 ng/ml



#22 AR-1248-2

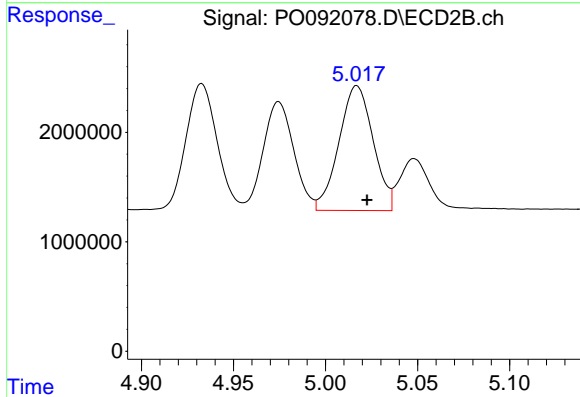
R.T.: 4.975 min
 Delta R.T.: -0.006 min
 Response: 11453365
 Conc: 258.22 ng/ml



#23 AR-1248-3

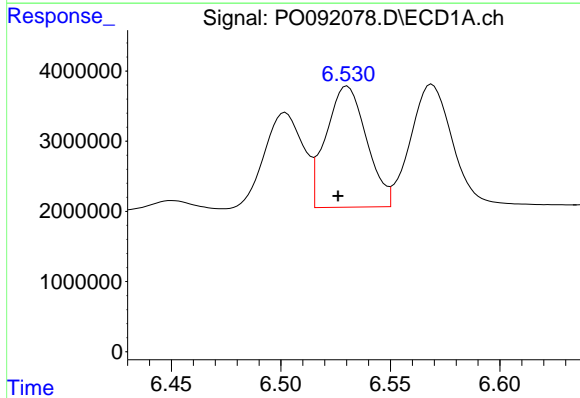
R.T.: 6.119 min
 Delta R.T.: 0.004 min
 Response: 24247550
 Conc: 263.56 ng/ml

Instrument :
 ECD_O
 ClientSampleId :



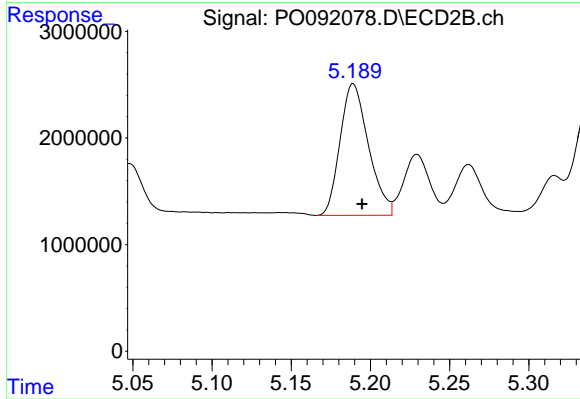
#23 AR-1248-3

R.T.: 5.017 min
 Delta R.T.: -0.006 min
 Response: 14759175
 Conc: 323.96 ng/ml



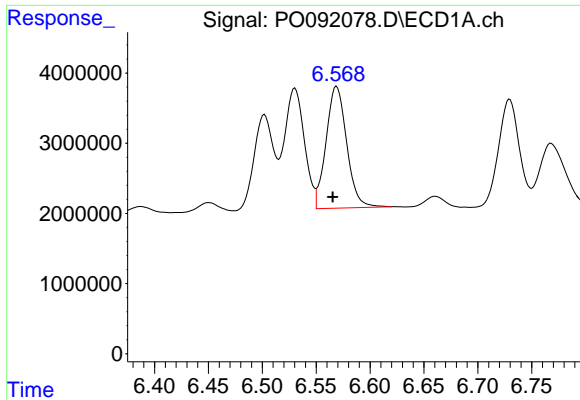
#24 AR-1248-4

R.T.: 6.530 min
 Delta R.T.: 0.004 min
 Response: 22264029
 Conc: 250.30 ng/ml



#24 AR-1248-4

R.T.: 5.189 min
 Delta R.T.: -0.006 min
 Response: 15418849
 Conc: 295.71 ng/ml

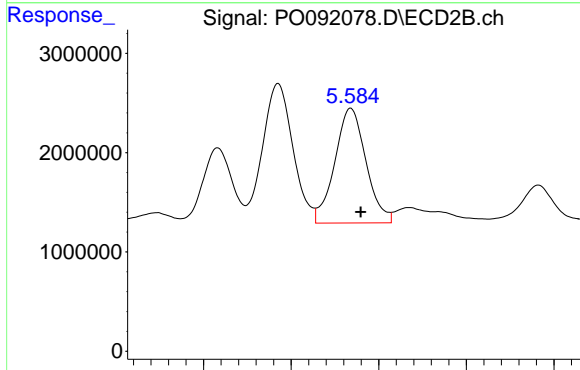


#25 AR-1248-5

R.T.: 6.569 min
 Delta R.T.: 0.004 min
 Response: 23191727
 Conc: 268.08 ng/ml

Instrument :
 ECD_O
 ClientSampleId :

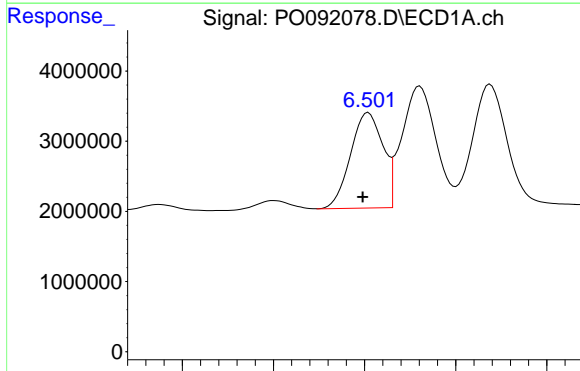
Time 6.40 6.45 6.50 6.55 6.60 6.65 6.70 6.75



#25 AR-1248-5

R.T.: 5.584 min
 Delta R.T.: -0.006 min
 Response: 14335642
 Conc: 324.13 ng/ml

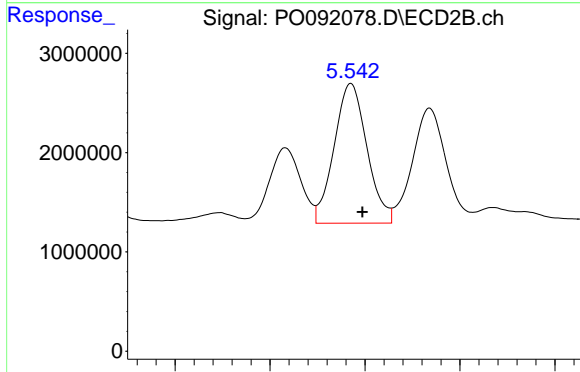
Time 5.50 5.55 5.60 5.65 5.70



#26 AR-1254-1

R.T.: 6.502 min
 Delta R.T.: 0.003 min
 Response: 16844348
 Conc: 162.81 ng/ml

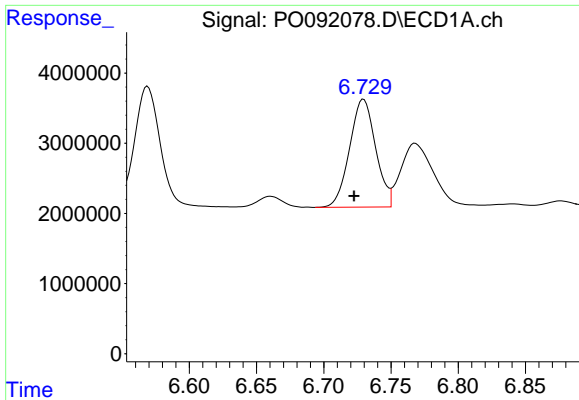
Time 6.40 6.45 6.50 6.55 6.60



#26 AR-1254-1

R.T.: 5.543 min
 Delta R.T.: -0.006 min
 Response: 16911873
 Conc: 229.07 ng/ml

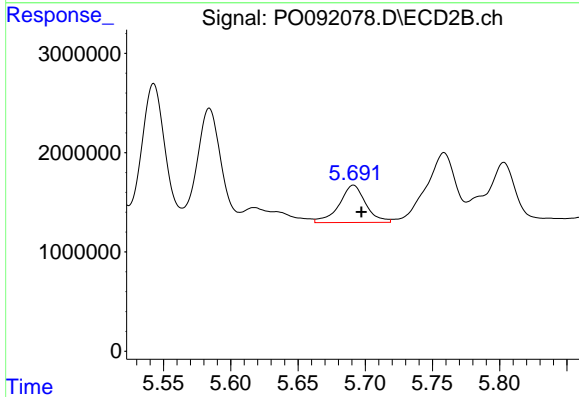
Time 5.45 5.50 5.55 5.60 5.65



#27 AR-1254-2

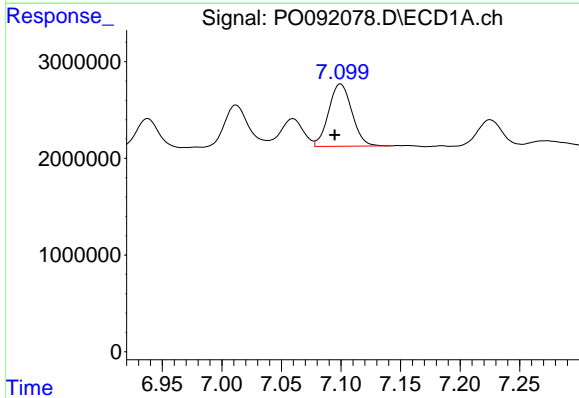
R.T.: 6.730 min
 Delta R.T.: 0.007 min
 Response: 20731313
 Conc: 136.77 ng/ml

Instrument :
 ECD_O
 ClientSampleId :



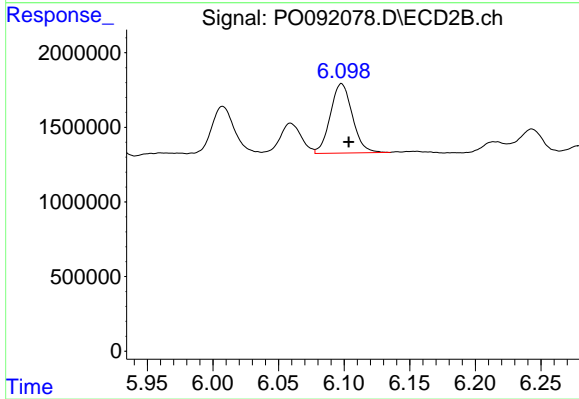
#27 AR-1254-2

R.T.: 5.691 min
 Delta R.T.: -0.006 min
 Response: 5160597
 Conc: 78.97 ng/ml



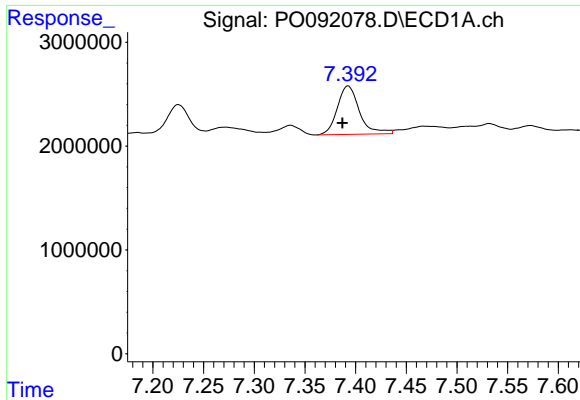
#28 AR-1254-3

R.T.: 7.100 min
 Delta R.T.: 0.005 min
 Response: 8774676
 Conc: 58.68 ng/ml



#28 AR-1254-3

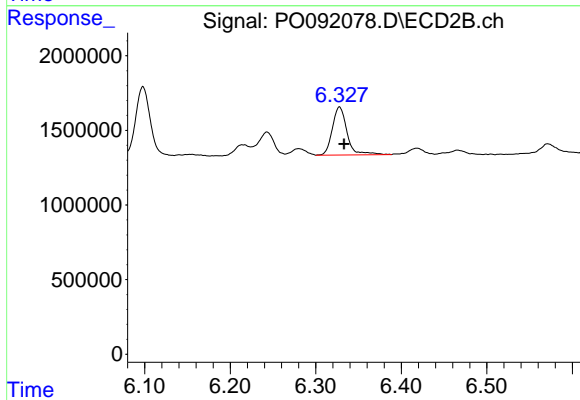
R.T.: 6.098 min
 Delta R.T.: -0.006 min
 Response: 5443940
 Conc: 56.09 ng/ml



#29 AR-1254-4

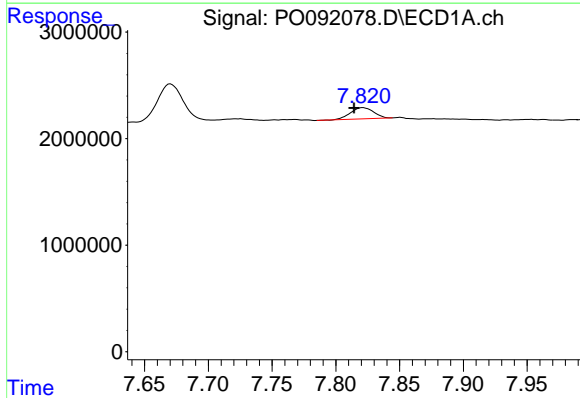
R.T.: 7.393 min
 Delta R.T.: 0.006 min
 Response: 7085208
 Conc: 74.55 ng/ml

Instrument :
 ECD_O
 ClientSampleId :



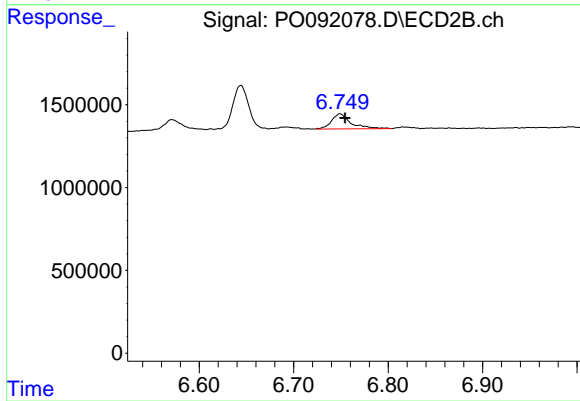
#29 AR-1254-4

R.T.: 6.328 min
 Delta R.T.: -0.005 min
 Response: 3839728
 Conc: 79.23 ng/ml



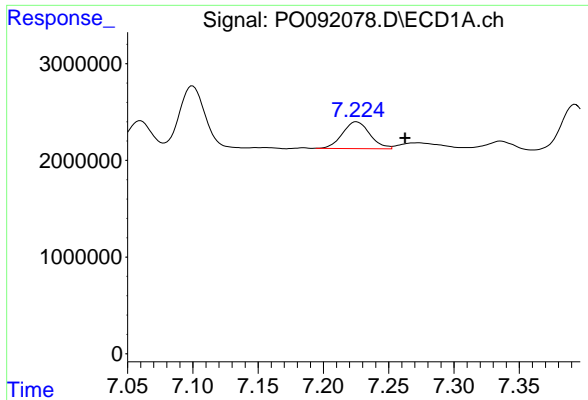
#30 AR-1254-5

R.T.: 7.821 min
 Delta R.T.: 0.007 min
 Response: 1327621
 Conc: 10.70 ng/ml



#30 AR-1254-5

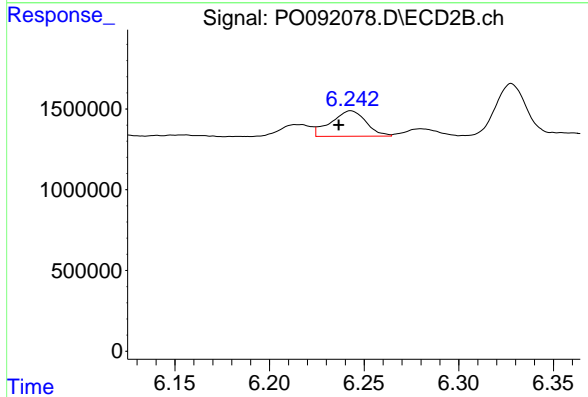
R.T.: 6.749 min
 Delta R.T.: -0.005 min
 Response: 1297540
 Conc: 16.85 ng/ml



#31 AR-1260-1

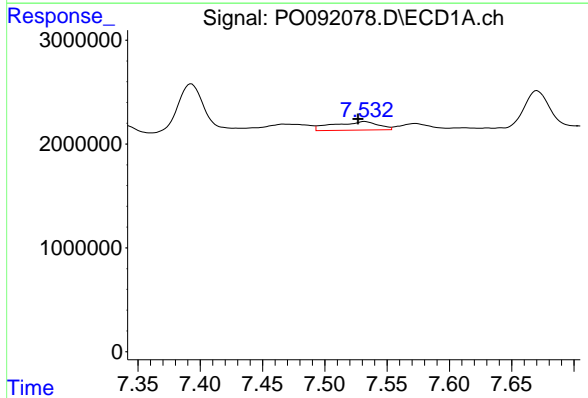
R.T.: 7.225 min
 Delta R.T.: -0.037 min
 Response: 4066412
 Conc: 33.87 ng/ml

Instrument :
 ECD_O
 ClientSampleId :



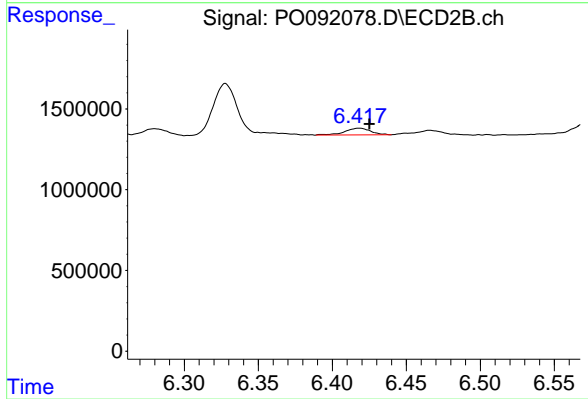
#31 AR-1260-1

R.T.: 6.243 min
 Delta R.T.: 0.006 min
 Response: 2042480
 Conc: 31.41 ng/ml



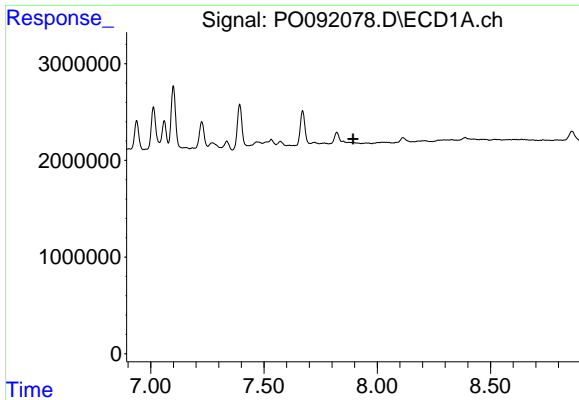
#32 AR-1260-2

R.T.: 7.532 min
 Delta R.T.: 0.006 min
 Response: 2058476
 Conc: 16.02 ng/ml



#32 AR-1260-2

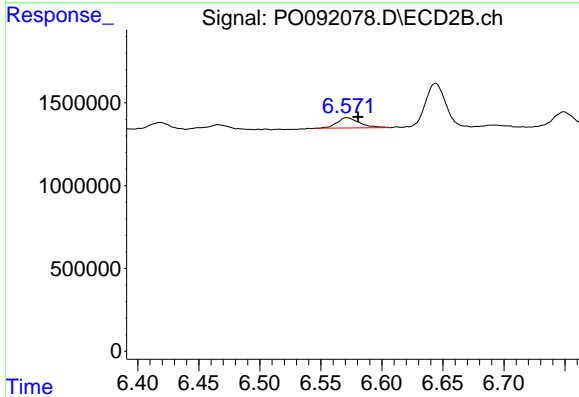
R.T.: 6.418 min
 Delta R.T.: -0.007 min
 Response: 498221
 Conc: 6.80 ng/ml



#33 AR-1260-3

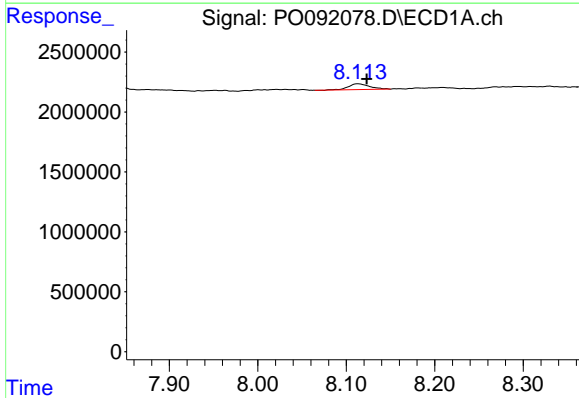
R.T.: 0.000 min
 Exp R.T.: 7.893 min
 Response: 0
 Conc: N.D.

Instrument :
 ECD_O
 ClientSampleId :



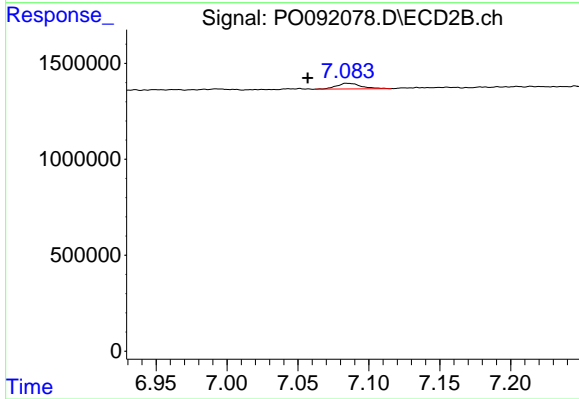
#33 AR-1260-3

R.T.: 6.571 min
 Delta R.T.: -0.009 min
 Response: 811071
 Conc: 11.34 ng/ml



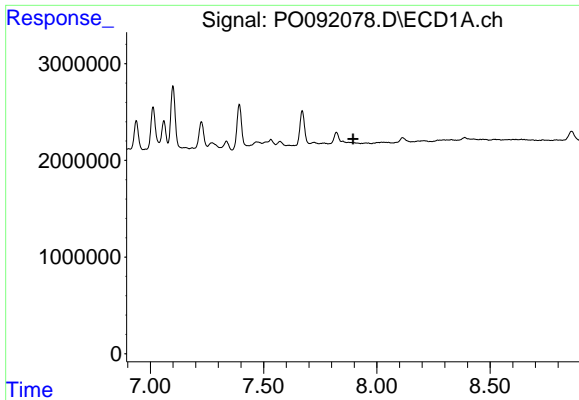
#34 AR-1260-4

R.T.: 8.113 min
 Delta R.T.: -0.010 min
 Response: 795873
 Conc: 6.89 ng/ml



#34 AR-1260-4

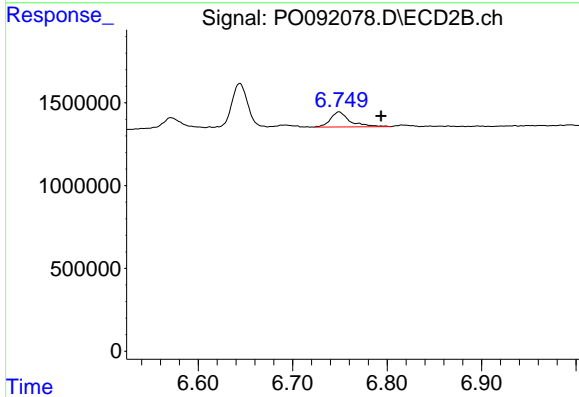
R.T.: 7.085 min
 Delta R.T.: 0.028 min
 Response: 354005
 Conc: 6.57 ng/ml



#36 AR-1262-1

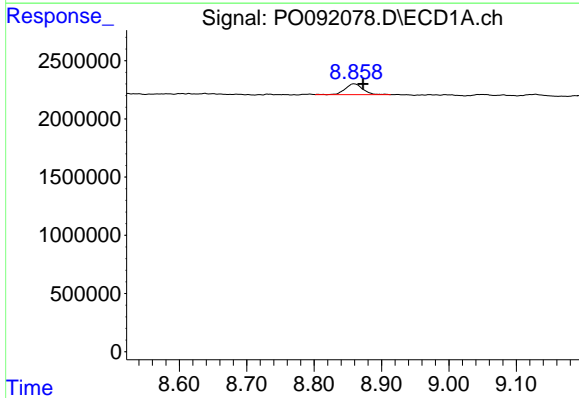
R.T.: 0.000 min
 Exp R.T.: 7.895 min
 Response: 0
 Conc: N.D.

Instrument :
 ECD_O
 ClientSampleId :



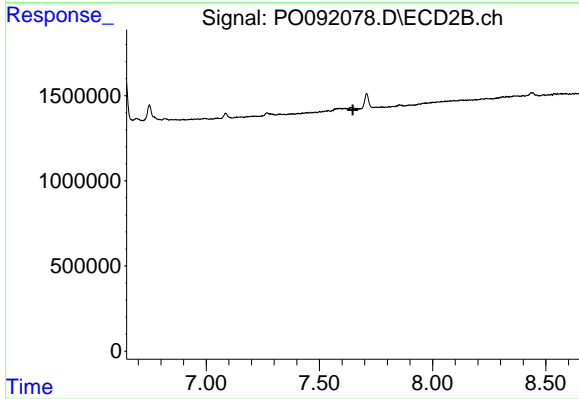
#36 AR-1262-1

R.T.: 6.749 min
 Delta R.T.: -0.044 min
 Response: 1297540
 Conc: 16.94 ng/ml



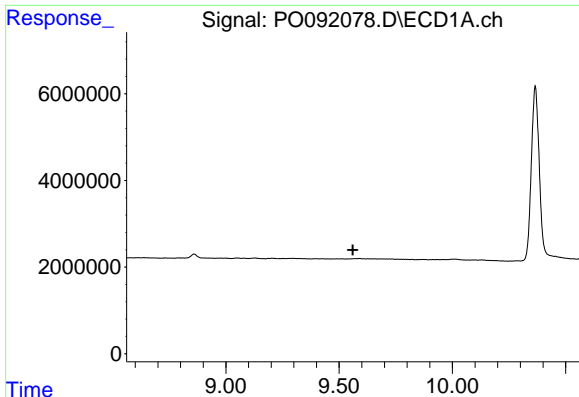
#39 AR-1262-4

R.T.: 8.859 min
 Delta R.T.: -0.013 min
 Response: 1690357
 Conc: 20.06 ng/ml



#39 AR-1262-4

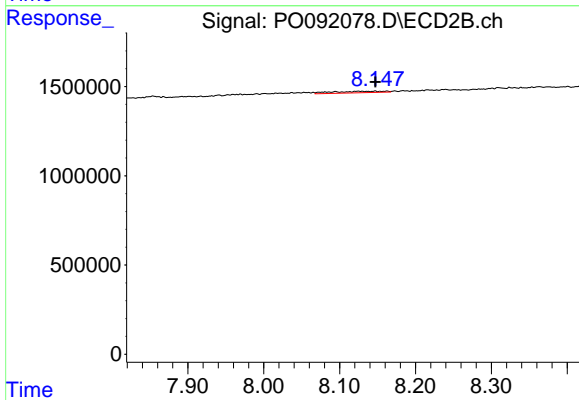
R.T.: 0.000 min
 Exp R.T.: 7.648 min
 Response: 0
 Conc: N.D.



#40 AR-1262-5

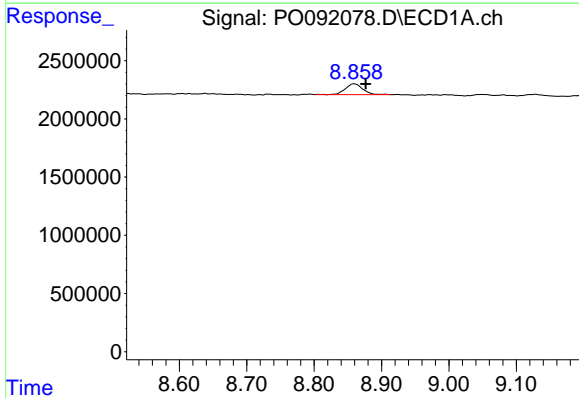
R.T.: 0.000 min
 Exp R.T.: 9.560 min
 Response: 0
 Conc: N.D.

Instrument :
 ECD_O
 ClientSampleId :



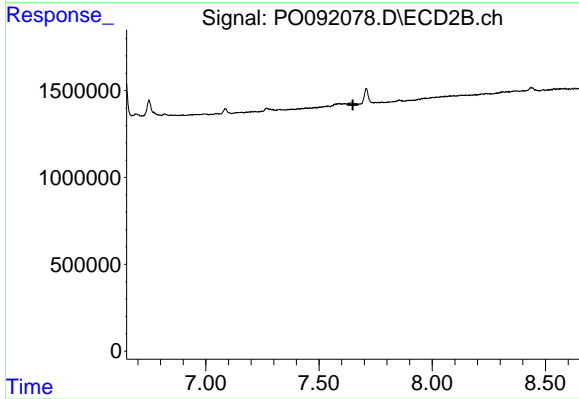
#40 AR-1262-5

R.T.: 8.147 min
 Delta R.T.: 0.000 min
 Response: 390676
 Conc: 10.72 ng/ml



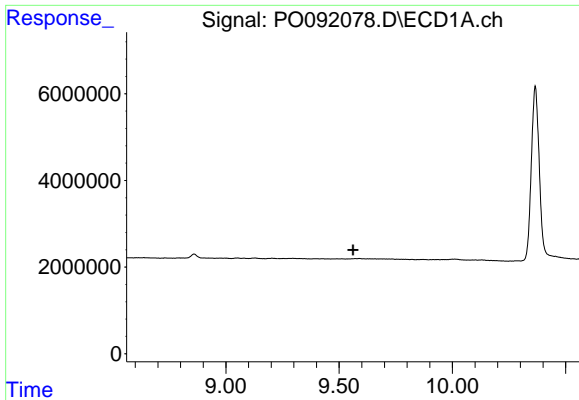
#42 AR-1268-2

R.T.: 8.859 min
 Delta R.T.: -0.018 min
 Response: 1690357
 Conc: 5.82 ng/ml



#42 AR-1268-2

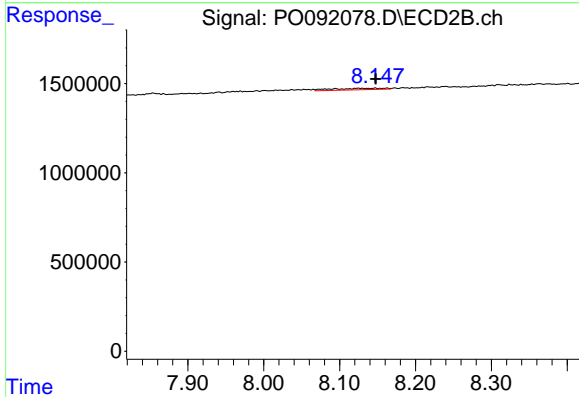
R.T.: 0.000 min
 Exp R.T.: 7.649 min
 Response: 0
 Conc: N.D.



#44 AR-1268-4

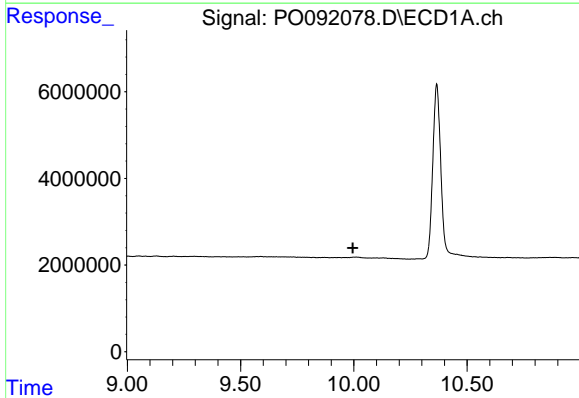
R.T.: 0.000 min
 Exp R.T.: 9.562 min
 Response: 0
 Conc: N.D.

Instrument :
 ECD_O
 ClientSampleId :



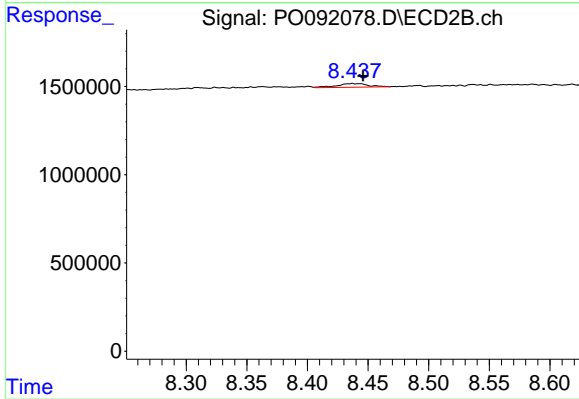
#44 AR-1268-4

R.T.: 8.147 min
 Delta R.T.: 0.000 min
 Response: 390676
 Conc: 8.25 ng/ml



#45 AR-1268-5

R.T.: 0.000 min
 Exp R.T.: 9.996 min
 Response: 0
 Conc: N.D.



#45 AR-1268-5

R.T.: 8.437 min
 Delta R.T.: -0.009 min
 Response: 375977
 Conc: 1.01 ng/ml