

Data Path : Z:\pestpcbsrv\HPCHEM1\ECD\_0\Data\P0011723\  
 Data File : P0092101.D  
 Signal(s) : Signal #1: ECD1A.ch Signal #2: ECD2B.ch  
 Acq On : 17 Jan 2023 14:33  
 Operator : YP/AJ  
 Sample : PB150257BS  
 Misc :  
 ALS Vial : 8 Sample Multiplier: 1

Instrument :  
 ECD\_0  
 ClientSampleId :  
 PB150257BS

Integration File signal 1: autoint1.e  
 Integration File signal 2: autoint2.e  
 Quant Time: Jan 17 20:36:07 2023  
 Quant Method : Z:\pestpcbsrv\HPCHEM1\ECD\_0\methods\P0011023.M  
 Quant Title : GC EXTRACTABLES  
 QLast Update : Wed Jan 11 04:41:00 2023  
 Response via : Initial Calibration  
 Integrator: ChemStation

Volume Inj. : 2 µl  
 Signal #1 Phase : ZB-MR1 Signal #2 Phase: ZB-MR2  
 Signal #1 Info : 30Mx0.32mmx 0.50µ Signal #2 Info : 30M x 0.32mm x 0.25µm

Compound	RT#1	RT#2	Resp#1	Resp#2	ng/ml	ng/ml
-----						
System Monitoring Compounds						
1) SA Tetrachlo...	4.447	3.647	47721307	21011602	17.109	15.134
2) SA Decachlor...	10.368	8.701	41728932	21104153	21.315	23.801
Target Compounds						
3) L1 AR-1016-1	5.633	4.738	32042815	15708472	377.001	359.800
4) L1 AR-1016-2	5.656	4.756	48020493	22399431	381.785	355.795
5) L1 AR-1016-3	5.720	4.934	30398578	12274691	382.169	366.098
6) L1 AR-1016-4	5.819	4.976	23678839	11080585	385.362	373.017
7) L1 AR-1016-5	6.120	5.190	24967970	13689184	383.816	371.442
31) L7 AR-1260-1	7.270	6.230	45337622	25634162	377.609	394.214
32) L7 AR-1260-2	7.535	6.419	50239762	29607203	391.091	404.198
33) L7 AR-1260-3	7.902	6.574	34833791	28205126	334.055	394.360
34) L7 AR-1260-4	8.132	7.050	40754763	20556422	352.988	381.527
35) L7 AR-1260-5	8.467	7.293	69601800	44634784	348.437	397.784

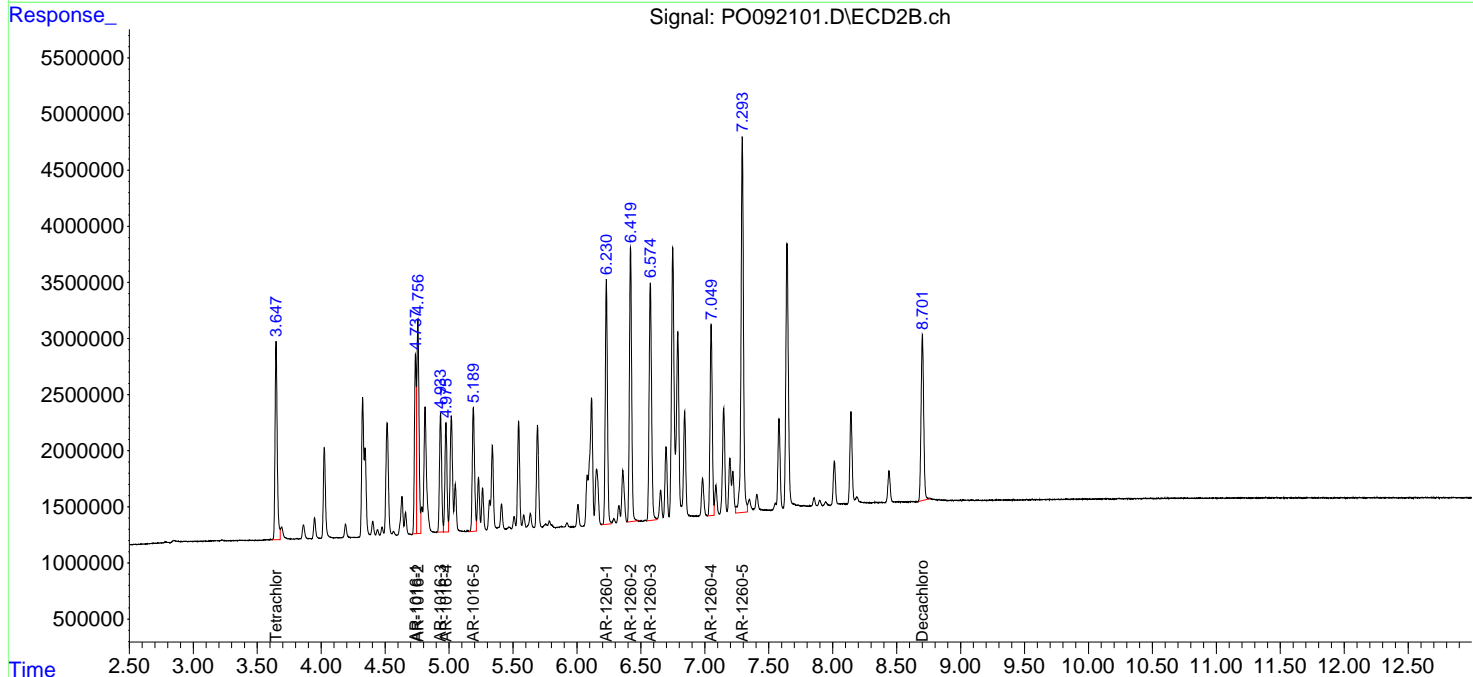
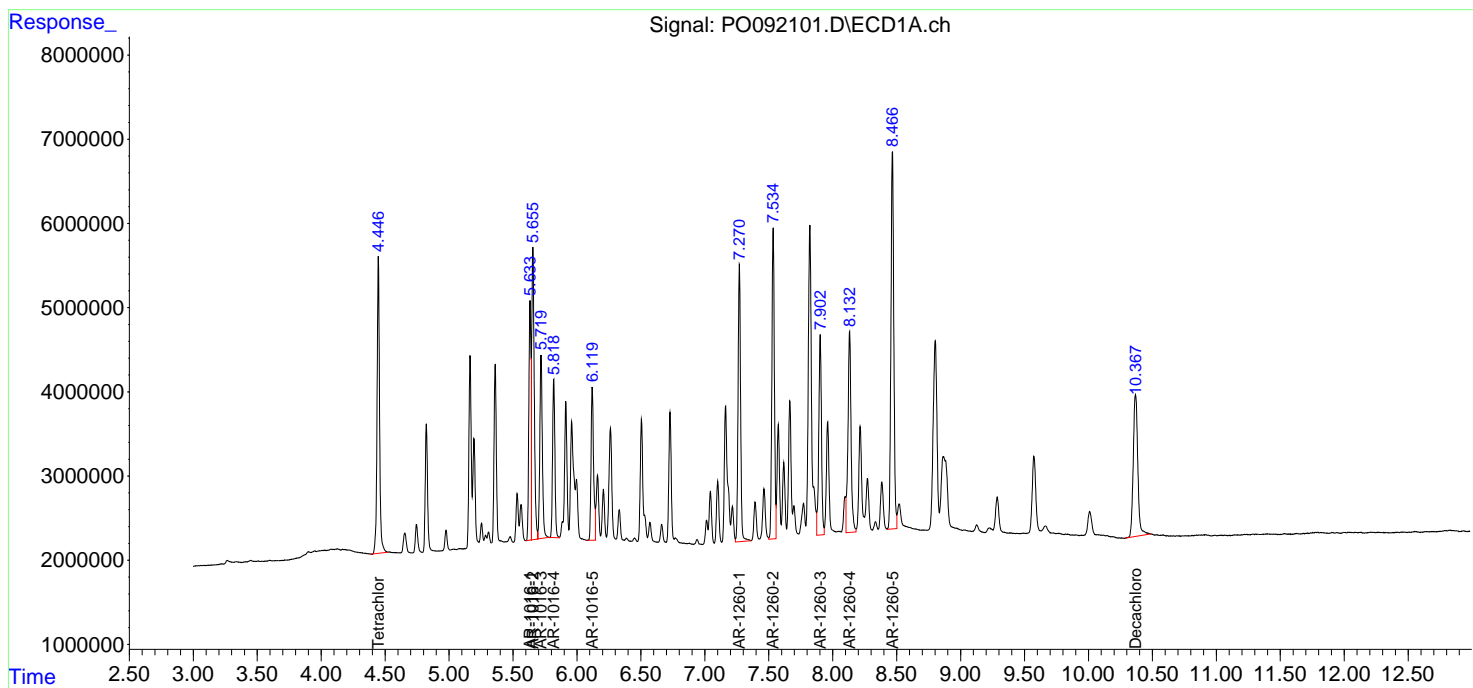
(f)=RT Delta > 1/2 Window (#)=Amounts differ by > 25% (m)=manual int.

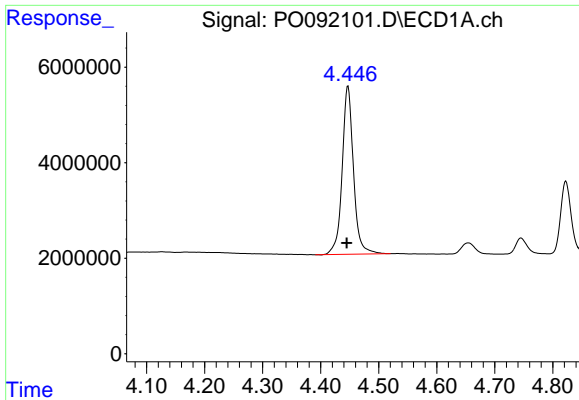
Data Path : Z:\pestpcbsrv\HPCHEM1\ECD\_O\Data\P0011723\  
 Data File : P0092101.D  
 Signal(s) : Signal #1: ECD1A.ch Signal #2: ECD2B.ch  
 Acq On : 17 Jan 2023 14:33  
 Operator : YP/AJ  
 Sample : PB150257BS  
 Misc :  
 ALS Vial : 8 Sample Multiplier: 1

Instrument :  
 ECD\_O  
 ClientSampleId :  
 PB150257BS

Integration File signal 1: autoint1.e  
 Integration File signal 2: autoint2.e  
 Quant Time: Jan 17 20:36:07 2023  
 Quant Method : Z:\pestpcbsrv\HPCHEM1\ECD\_O\methods\P0011023.M  
 Quant Title : GC EXTRACTABLES  
 QLast Update : Wed Jan 11 04:41:00 2023  
 Response via : Initial Calibration  
 Integrator: ChemStation

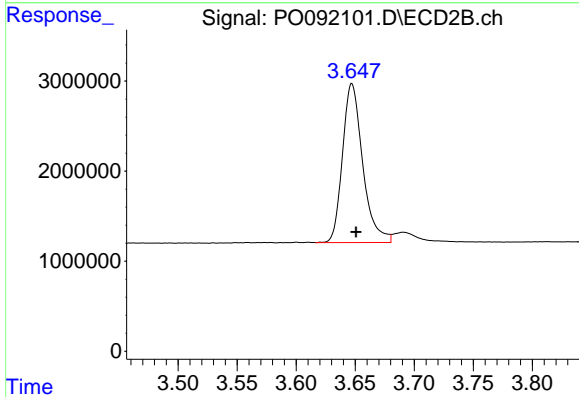
Volume Inj. : 2 µl  
 Signal #1 Phase : ZB-MR1 Signal #2 Phase: ZB-MR2  
 Signal #1 Info : 30Mx0.32mmx 0.50µ Signal #2 Info : 30M x 0.32mm x 0.25µm



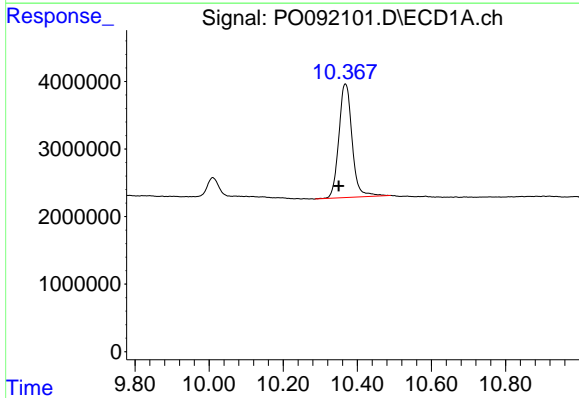


#1 Tetrachloro-m-xylene  
 R.T.: 4.447 min  
 Delta R.T.: 0.002 min  
 Response: 47721307  
 Conc: 17.11 ng/ml

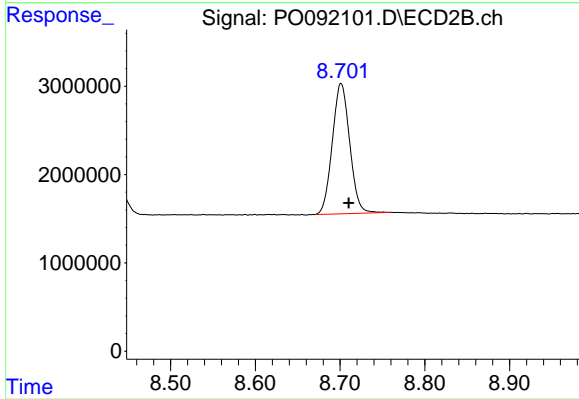
Instrument :  
 ECD\_O  
 ClientSampleId :  
 PB150257BS



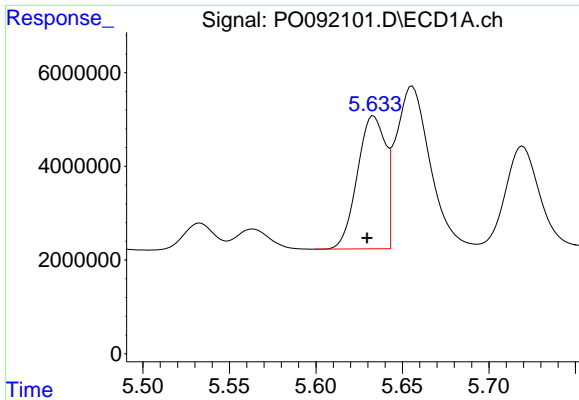
#1 Tetrachloro-m-xylene  
 R.T.: 3.647 min  
 Delta R.T.: -0.003 min  
 Response: 21011602  
 Conc: 15.13 ng/ml



#2 Decachlorobiphenyl  
 R.T.: 10.368 min  
 Delta R.T.: 0.018 min  
 Response: 41728932  
 Conc: 21.32 ng/ml



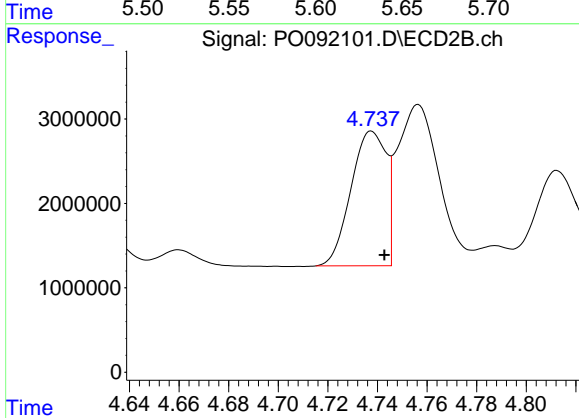
#2 Decachlorobiphenyl  
 R.T.: 8.701 min  
 Delta R.T.: -0.009 min  
 Response: 21104153  
 Conc: 23.80 ng/ml



#3 AR-1016-1

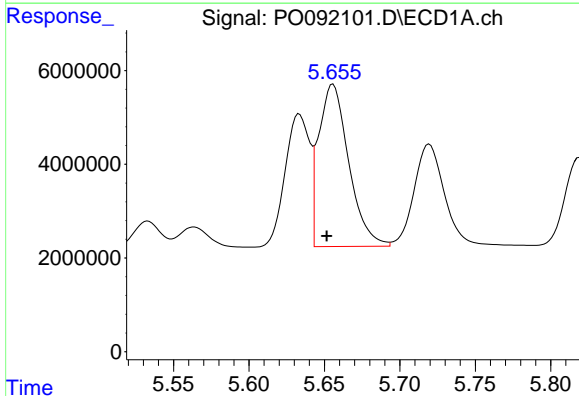
R.T.: 5.633 min  
 Delta R.T.: 0.004 min  
 Response: 32042815  
 Conc: 377.00 ng/ml

Instrument :  
 ECD\_O  
 ClientSampleId :  
 PB150257BS



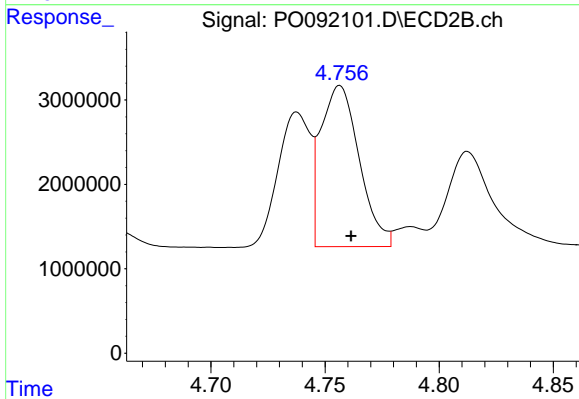
#3 AR-1016-1

R.T.: 4.738 min  
 Delta R.T.: -0.005 min  
 Response: 15708472  
 Conc: 359.80 ng/ml



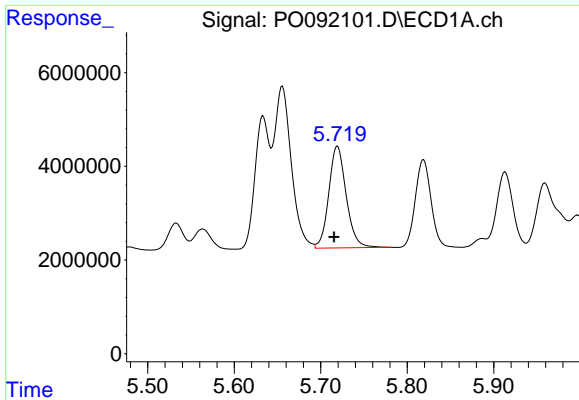
#4 AR-1016-2

R.T.: 5.656 min  
 Delta R.T.: 0.004 min  
 Response: 48020493  
 Conc: 381.78 ng/ml



#4 AR-1016-2

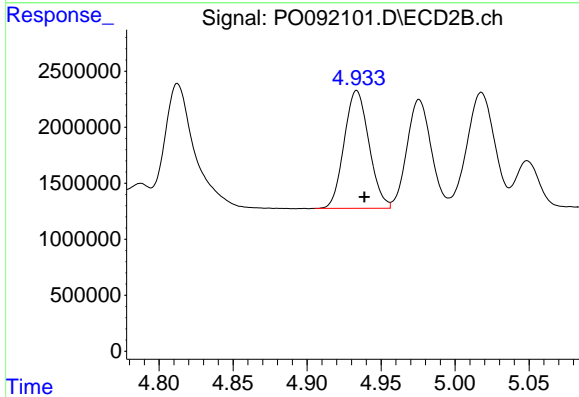
R.T.: 4.756 min  
 Delta R.T.: -0.005 min  
 Response: 22399431  
 Conc: 355.79 ng/ml



#5 AR-1016-3

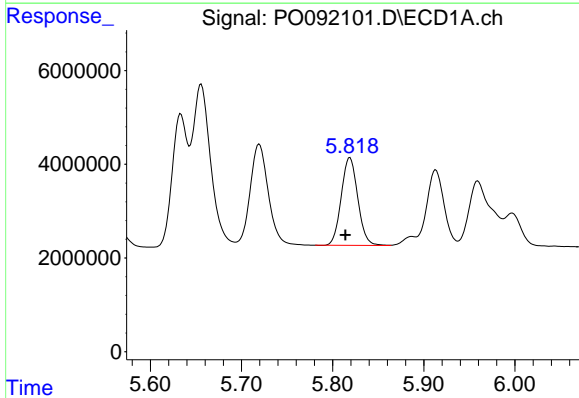
R.T.: 5.720 min  
 Delta R.T.: 0.004 min  
 Response: 30398578  
 Conc: 382.17 ng/ml

Instrument :  
 ECD\_O  
 ClientSampleId :  
 PB150257BS



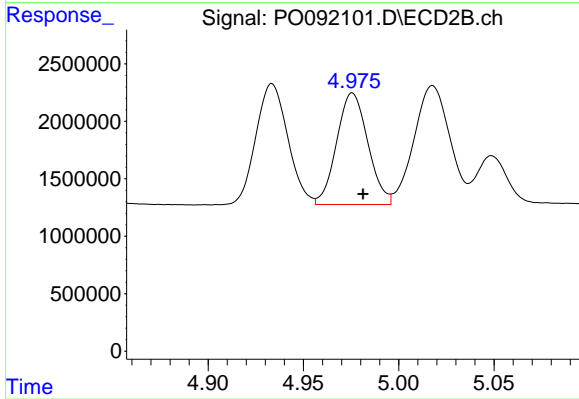
#5 AR-1016-3

R.T.: 4.934 min  
 Delta R.T.: -0.005 min  
 Response: 12274691  
 Conc: 366.10 ng/ml



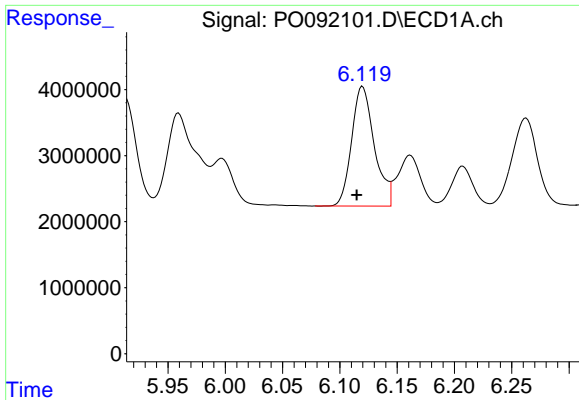
#6 AR-1016-4

R.T.: 5.819 min  
 Delta R.T.: 0.005 min  
 Response: 23678839  
 Conc: 385.36 ng/ml



#6 AR-1016-4

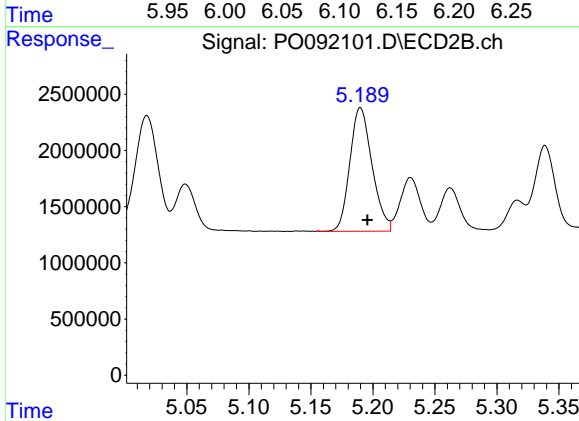
R.T.: 4.976 min  
 Delta R.T.: -0.005 min  
 Response: 11080585  
 Conc: 373.02 ng/ml



#7 AR-1016-5

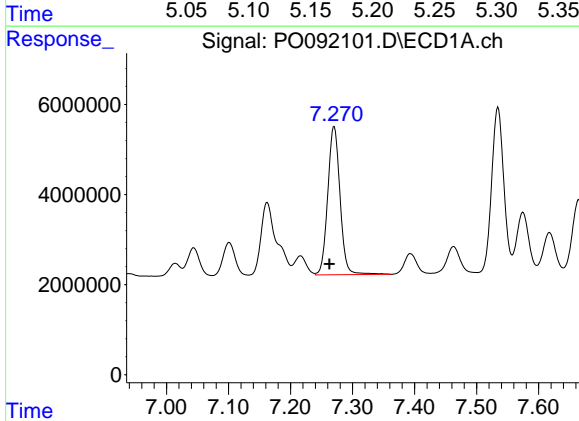
R.T.: 6.120 min  
 Delta R.T.: 0.005 min  
 Response: 24967970  
 Conc: 383.82 ng/ml

Instrument :  
 ECD\_O  
 ClientSampleId :  
 PB150257BS



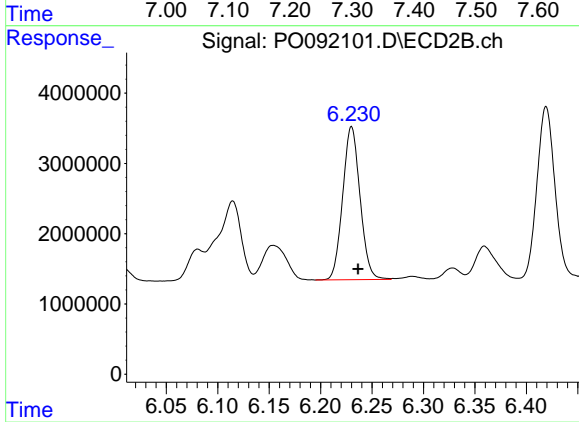
#7 AR-1016-5

R.T.: 5.190 min  
 Delta R.T.: -0.006 min  
 Response: 13689184  
 Conc: 371.44 ng/ml



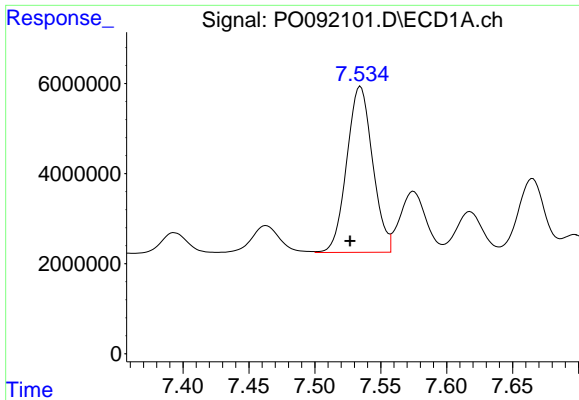
#31 AR-1260-1

R.T.: 7.270 min  
 Delta R.T.: 0.008 min  
 Response: 45337622  
 Conc: 377.61 ng/ml



#31 AR-1260-1

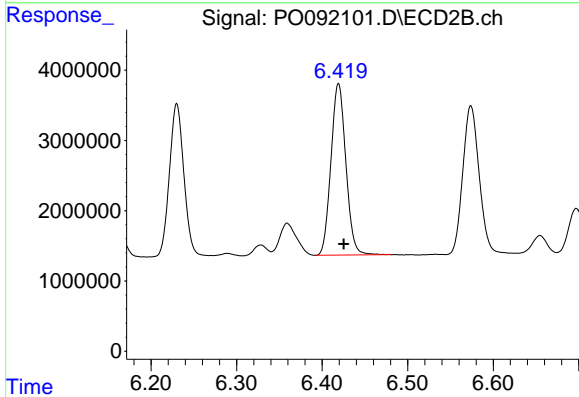
R.T.: 6.230 min  
 Delta R.T.: -0.006 min  
 Response: 25634162  
 Conc: 394.21 ng/ml



#32 AR-1260-2

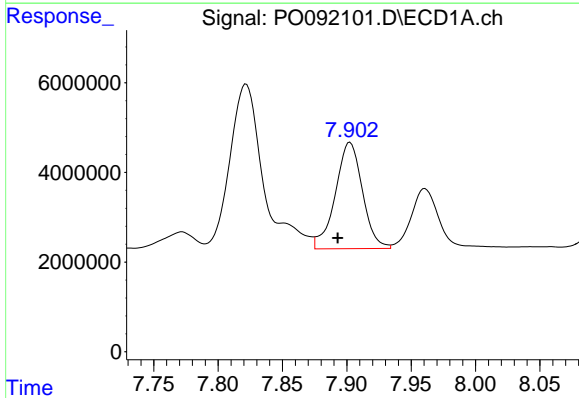
R.T.: 7.535 min  
 Delta R.T.: 0.008 min  
 Response: 50239762  
 Conc: 391.09 ng/ml

Instrument :  
 ECD\_O  
 ClientSampleId :  
 PB150257BS



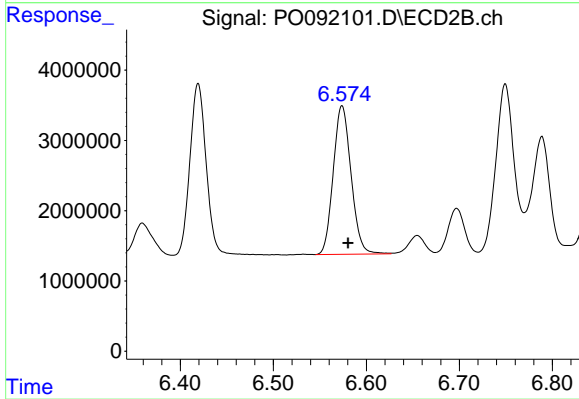
#32 AR-1260-2

R.T.: 6.419 min  
 Delta R.T.: -0.006 min  
 Response: 29607203  
 Conc: 404.20 ng/ml



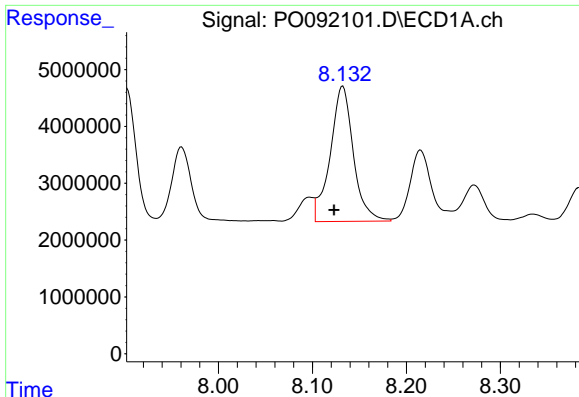
#33 AR-1260-3

R.T.: 7.902 min  
 Delta R.T.: 0.010 min  
 Response: 34833791  
 Conc: 334.05 ng/ml



#33 AR-1260-3

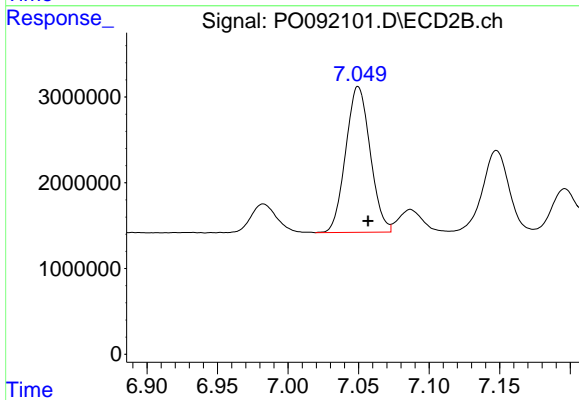
R.T.: 6.574 min  
 Delta R.T.: -0.007 min  
 Response: 28205126  
 Conc: 394.36 ng/ml



#34 AR-1260-4

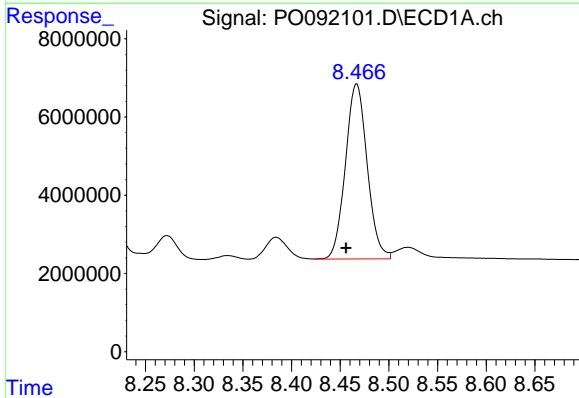
R.T.: 8.132 min  
 Delta R.T.: 0.009 min  
 Response: 40754763  
 Conc: 352.99 ng/ml

Instrument :  
 ECD\_O  
 ClientSampleId :  
 PB150257BS



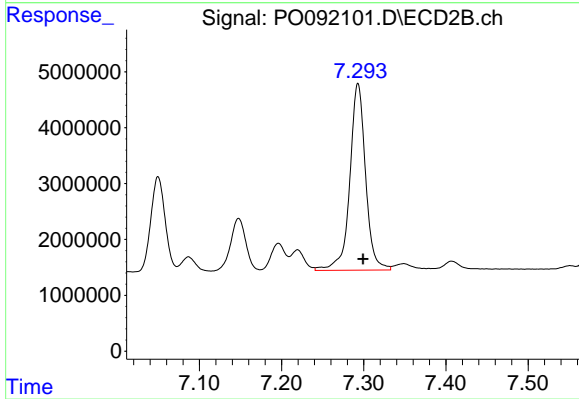
#34 AR-1260-4

R.T.: 7.050 min  
 Delta R.T.: -0.007 min  
 Response: 20556422  
 Conc: 381.53 ng/ml



#35 AR-1260-5

R.T.: 8.467 min  
 Delta R.T.: 0.011 min  
 Response: 69601800  
 Conc: 348.44 ng/ml



#35 AR-1260-5

R.T.: 7.293 min  
 Delta R.T.: -0.006 min  
 Response: 44634784  
 Conc: 397.78 ng/ml