

Data Path : Z:\pestpcbsrv\HPCHEM1\ECD_0\Data\P0011821\
 Data File : P0074891.D
 Signal(s) : Signal #1: ECD1A.CH Signal #2: ECD2B.CH
 Acq On : 18 Jan 2021 20:27
 Operator : AJ/MA
 Sample : M1085-03DL 2X
 Misc :
 ALS Vial : 35 Sample Multiplier: 1

Instrument :
 ECD_0
 ClientSampleID :
 S2-01-CDL

Integration File signal 1: autoint1.e
 Integration File signal 2: autoint2.e
 Quant Time: Jan 19 01:06:43 2021
 Quant Method : Z:\pestpcbsrv\HPCHEM1\ECD_0\methods\P0011121.M
 Quant Title : GC EXTRACTABLES
 QLast Update : Tue Jan 12 06:02:45 2021
 Response via : Initial Calibration
 Integrator: ChemStation 6890 Scale Mode: Small noise peaks clipped

Volume Inj. : 2 µl
 Signal #1 Phase : ZB-MR1 Signal #2 Phase: ZB-MR2
 Signal #1 Info : 30Mx0.32mmx 0.50µ Signal #2 Info : 30M x 0.32mm x 0.25µm

Compound	RT#1	RT#2	Resp#1	Resp#2	ng/ml	ng/ml
System Monitoring Compounds						
1) SA Tetrachlo...	4.928	4.002	1181562	640560	11.198	11.387
2) SA Decachlor...	10.946	9.254	976954	558097	9.626	10.165
Target Compounds						
6) L1 AR-1016-4	0.000	5.508	0	271134	N.D.	192.921 #
7) L1 AR-1016-5	6.765	5.734	223587	133761	81.749	77.787
8) L2 AR-1221-1	5.184	0.000	66789	0	54.375	N.D. #
14) L3 AR-1232-4	0.000	5.551	0	77502	N.D.	121.867 #
15) L3 AR-1232-5	6.547	5.734	473356	133761	581.765	192.629 #
19) L4 AR-1242-4	0.000	5.551	0	77502	N.D.	59.299 #
20) L4 AR-1242-5	7.237	6.111	430595	1015761	171.110	580.159 #
22) L5 AR-1248-2	6.547	5.508	473356	271134	152.202	144.271
23) L5 AR-1248-3	6.765	5.551	223587	77502	61.743	41.058 #
24) L5 AR-1248-4	7.196	5.734	679278	133761	152.322	59.387 #
25) L5 AR-1248-5	7.237	6.154	430595	125302	102.178	53.297 #
26) L6 AR-1254-1	7.165	6.111	1532317	1015761	348.401	281.218
27) L6 AR-1254-2	7.395	6.270	2865626	1277304	420.749	409.847
28) L6 AR-1254-3	7.779	6.686	3647159	2407552	519.958	490.944
29) L6 AR-1254-4	8.075	6.924	3267670	1644265	538.804	474.155
30) L6 AR-1254-5	8.504	7.350	5009394	6059878	862.360	1338.921 #
31) L7 AR-1260-1	7.945	6.823	1976277	1354712	396.148	424.637
32) L7 AR-1260-2	8.211	7.018	3648721	1521263	536.411	357.856 #
33) L7 AR-1260-3	8.564	7.169	764194	1221467	133.327	338.969 #
34) L7 AR-1260-4	8.802	7.649	2019039	291611	369.023	93.127 #
35) L7 AR-1260-5	9.135	7.897	1103561	524207	88.320	65.949 #
36) L8 AR-1262-1	8.564	7.350	764194	6059878	85.824	2381.486 #
37) L8 AR-1262-2	9.135	7.897	1103561	524207	72.080	57.014
38) L8 AR-1262-3	9.469f	8.182	735254	3445	73.410	0.871 #
39) L8 AR-1262-4	9.518f	8.241	232815	519313	31.262	78.384 #
40) L8 AR-1262-5	10.205	8.739	61486	53357	11.753	17.282 #
41) L9 AR-1268-1	9.469f	8.182	735254	3445	39.353	0.308 #
42) L9 AR-1268-2	9.518f	8.241	232815	519313	14.592	54.281 #
44) L9 AR-1268-4	10.205	8.739	61486	53357	10.495	15.381 #
45) L9 AR-1268-5	10.615	9.014	74558	66953	1.784	2.828 #

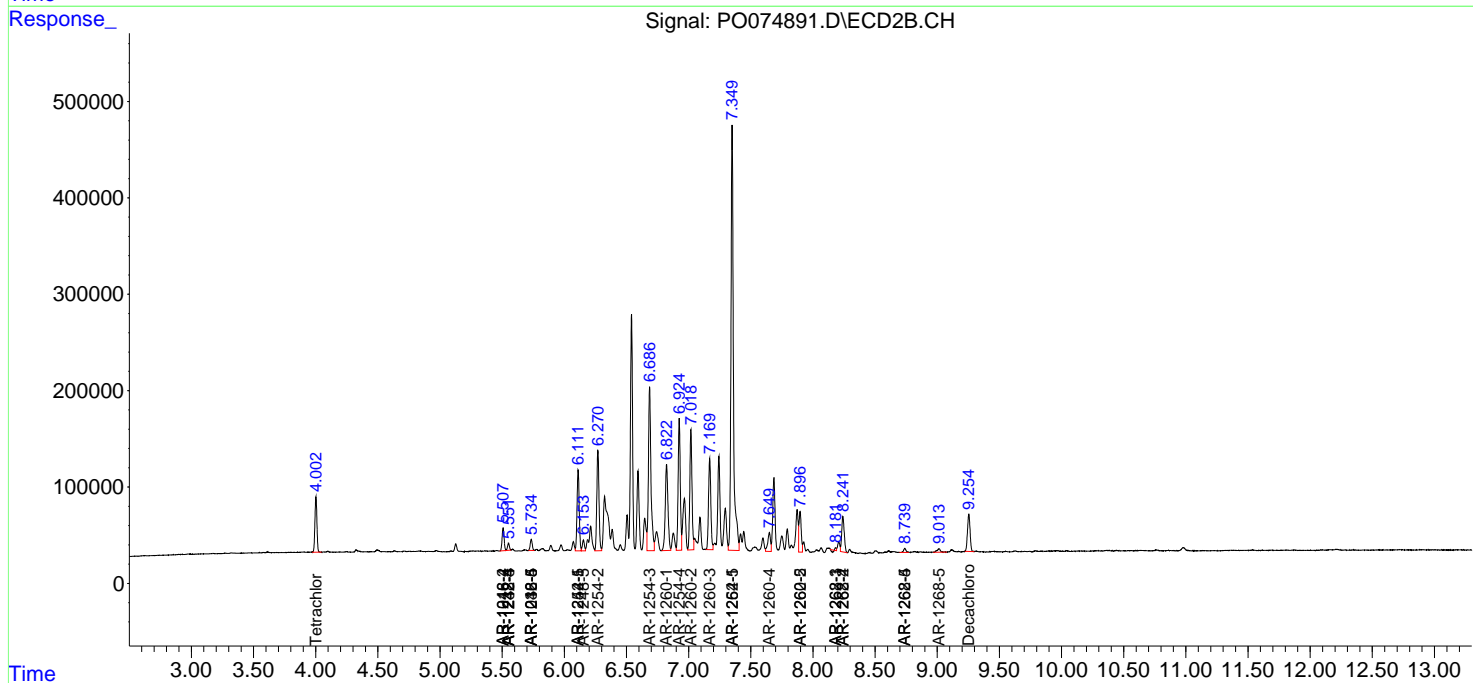
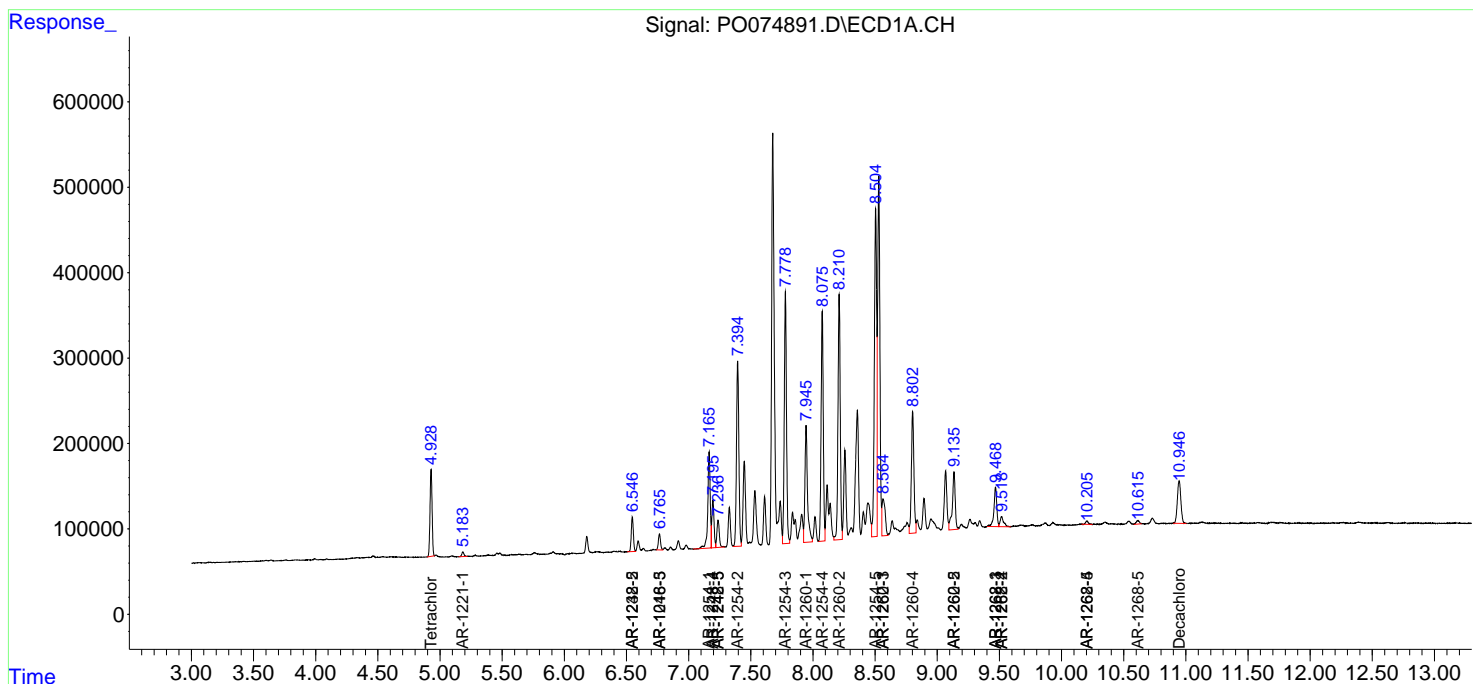
(f)=RT Delta > 1/2 Window (#)=Amounts differ by > 25% (m)=manual int.

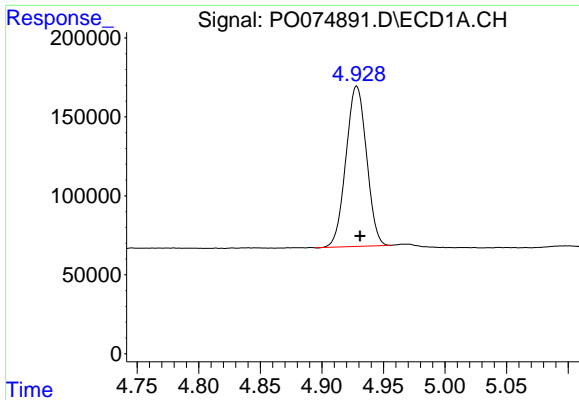
Data Path : Z:\pestpcbsrv\HPCHEM1\ECD_0\Data\P0011821\
 Data File : P0074891.D
 Signal(s) : Signal #1: ECD1A.CH Signal #2: ECD2B.CH
 Acq On : 18 Jan 2021 20:27
 Operator : AJ/MA
 Sample : M1085-03DL 2X
 Misc :
 ALS Vial : 35 Sample Multiplier: 1

Instrument :
 ECD_O
 ClientSampled :
 S2-01-CDL

Integration File signal 1: autoint1.e
 Integration File signal 2: autoint2.e
 Quant Time: Jan 19 01:06:43 2021
 Quant Method : Z:\pestpcbsrv\HPCHEM1\ECD_0\methods\P0011121.M
 Quant Title : GC EXTRACTABLES
 QLast Update : Tue Jan 12 06:02:45 2021
 Response via : Initial Calibration
 Integrator: ChemStation 6890 Scale Mode: Small noise peaks clipped

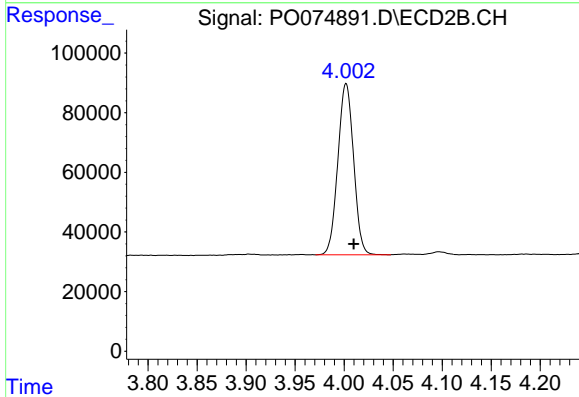
Volume Inj. : 2 µl
 Signal #1 Phase : ZB-MR1 Signal #2 Phase: ZB-MR2
 Signal #1 Info : 30Mx0.32mmx 0.50µ Signal #2 Info : 30M x 0.32mm x 0.25µm



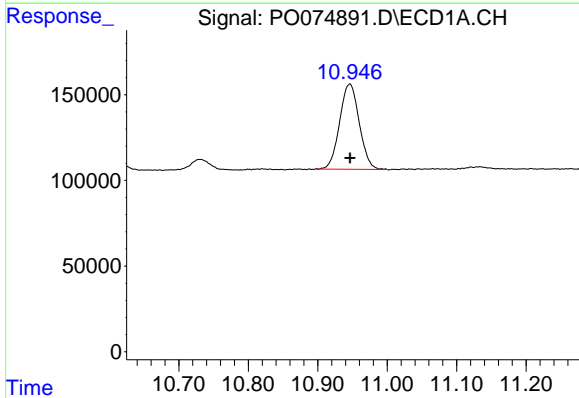


#1 Tetrachloro-m-xylene
 R.T.: 4.928 min
 Delta R.T.: -0.003 min
 Response: 1181562
 Conc: 11.20 ng/ml

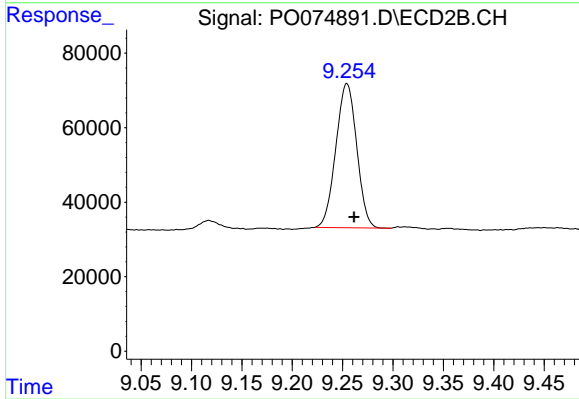
Instrument :
 ECD_O
 ClientSampleId :
 S2-01-CDL



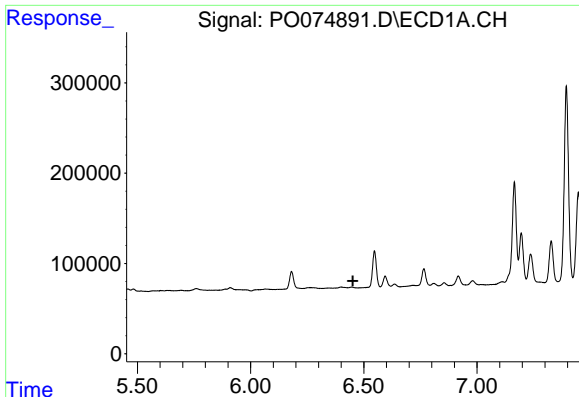
#1 Tetrachloro-m-xylene
 R.T.: 4.002 min
 Delta R.T.: -0.008 min
 Response: 640560
 Conc: 11.39 ng/ml



#2 Decachlorobiphenyl
 R.T.: 10.946 min
 Delta R.T.: 0.000 min
 Response: 976954
 Conc: 9.63 ng/ml



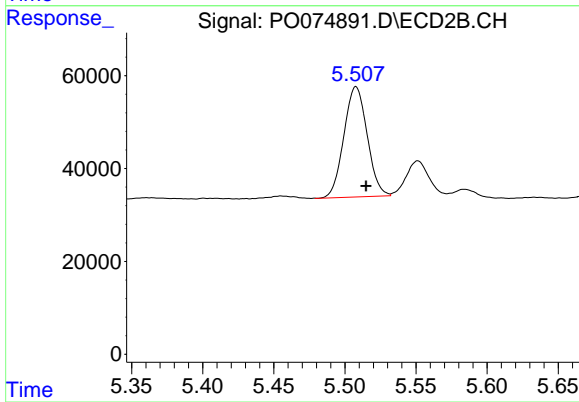
#2 Decachlorobiphenyl
 R.T.: 9.254 min
 Delta R.T.: -0.007 min
 Response: 558097
 Conc: 10.16 ng/ml



#6 AR-1016-4

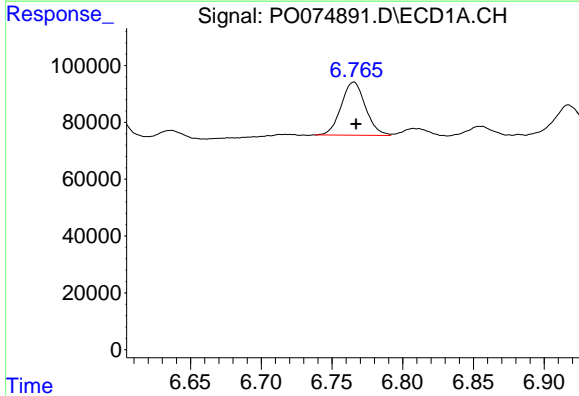
R.T.: 0.000 min
 Exp R.T.: 6.452 min
 Response: 0
 Conc: N.D.

Instrument :
 ECD_O
 ClientSampleId :
 S2-01-CDL



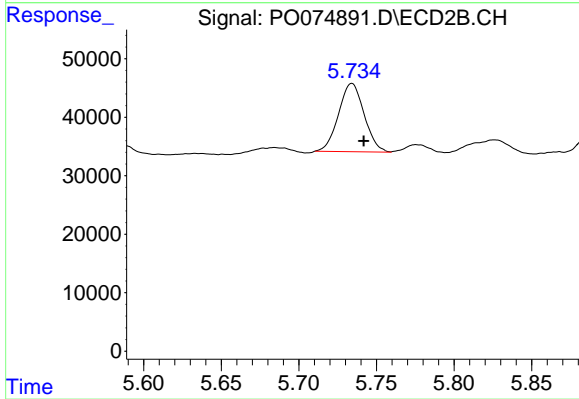
#6 AR-1016-4

R.T.: 5.508 min
 Delta R.T.: -0.007 min
 Response: 271134
 Conc: 192.92 ng/ml



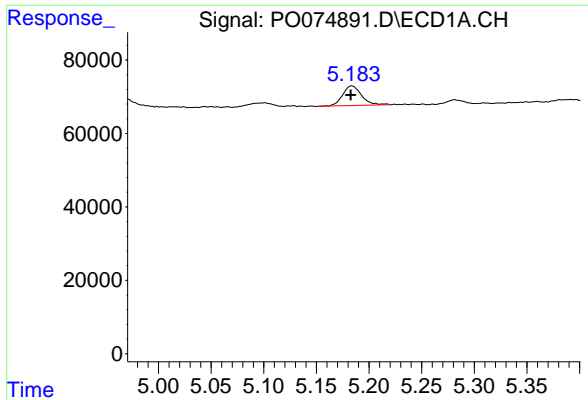
#7 AR-1016-5

R.T.: 6.765 min
 Delta R.T.: -0.002 min
 Response: 223587
 Conc: 81.75 ng/ml



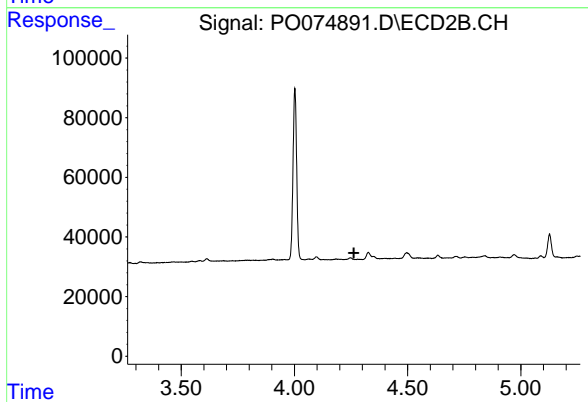
#7 AR-1016-5

R.T.: 5.734 min
 Delta R.T.: -0.008 min
 Response: 133761
 Conc: 77.79 ng/ml

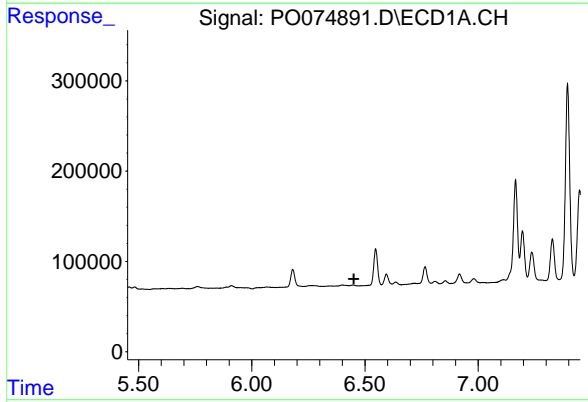


#8 AR-1221-1
 R.T.: 5.184 min
 Delta R.T.: 0.000 min
 Response: 66789
 Conc: 54.38 ng/ml

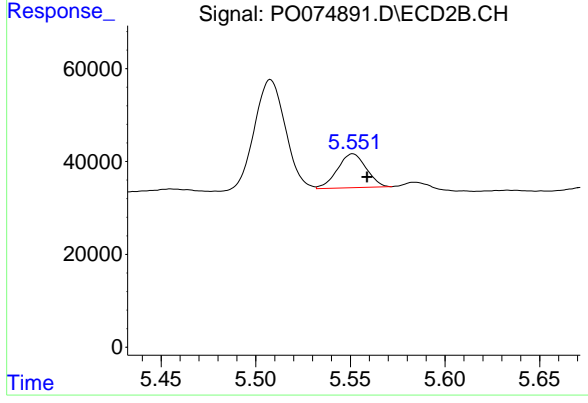
Instrument :
 ECD_O
 ClientSampleId :
 S2-01-CDL



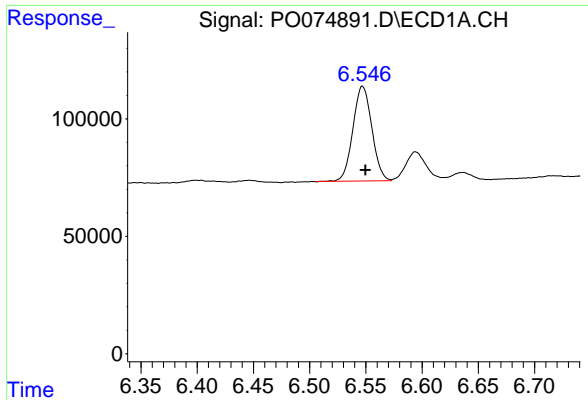
#8 AR-1221-1
 R.T.: 0.000 min
 Exp R.T. : 4.263 min
 Response: 0
 Conc: N.D.



#14 AR-1232-4
 R.T.: 0.000 min
 Exp R.T. : 6.451 min
 Response: 0
 Conc: N.D.



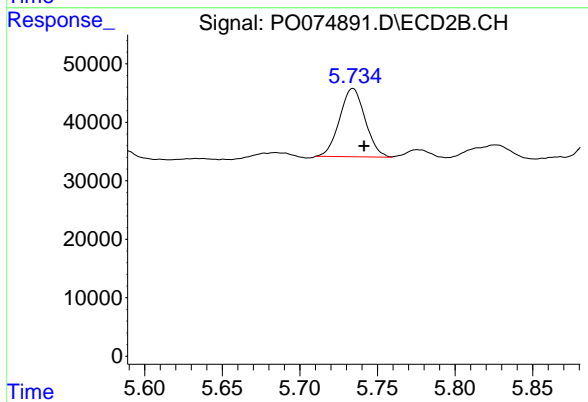
#14 AR-1232-4
 R.T.: 5.551 min
 Delta R.T.: -0.007 min
 Response: 77502
 Conc: 121.87 ng/ml



#15 AR-1232-5

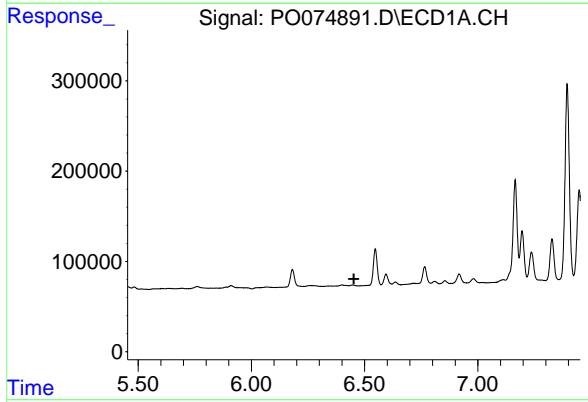
R.T.: 6.547 min
 Delta R.T.: -0.002 min
 Response: 473356
 Conc: 581.77 ng/ml

Instrument :
 ECD_O
 ClientSampled :
 S2-01-CDL



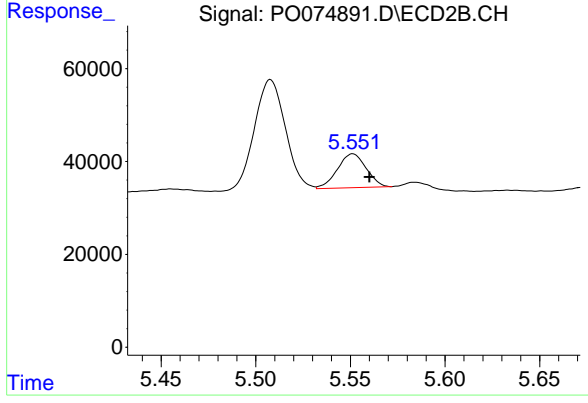
#15 AR-1232-5

R.T.: 5.734 min
 Delta R.T.: -0.007 min
 Response: 133761
 Conc: 192.63 ng/ml



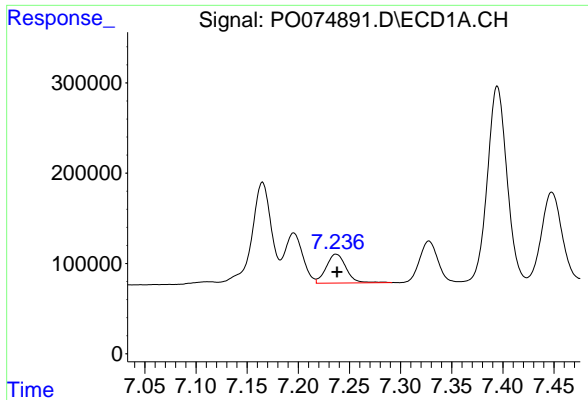
#19 AR-1242-4

R.T.: 0.000 min
 Exp R.T. : 6.453 min
 Response: 0
 Conc: N.D.



#19 AR-1242-4

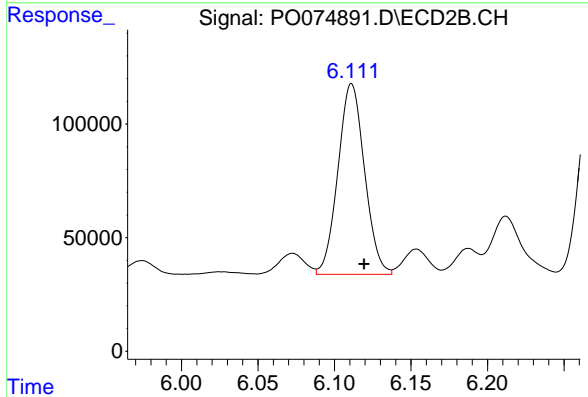
R.T.: 5.551 min
 Delta R.T.: -0.009 min
 Response: 77502
 Conc: 59.30 ng/ml



#20 AR-1242-5

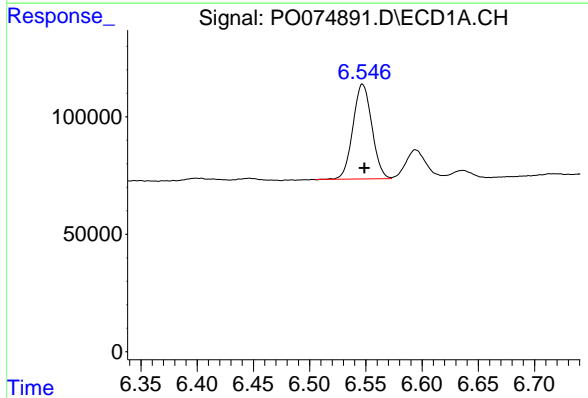
R.T.: 7.237 min
 Delta R.T.: 0.000 min
 Response: 430595
 Conc: 171.11 ng/ml

Instrument :
 ECD_O
 ClientSampled :
 S2-01-CDL



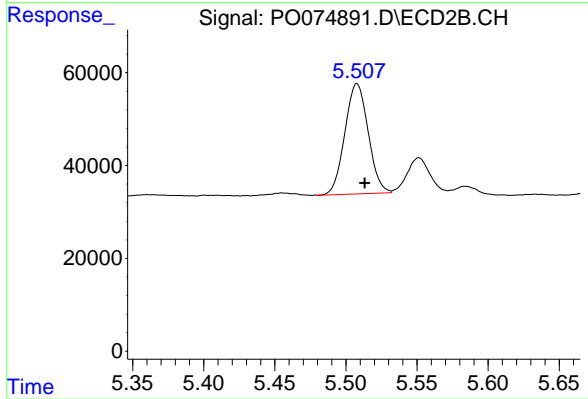
#20 AR-1242-5

R.T.: 6.111 min
 Delta R.T.: -0.008 min
 Response: 1015761
 Conc: 580.16 ng/ml



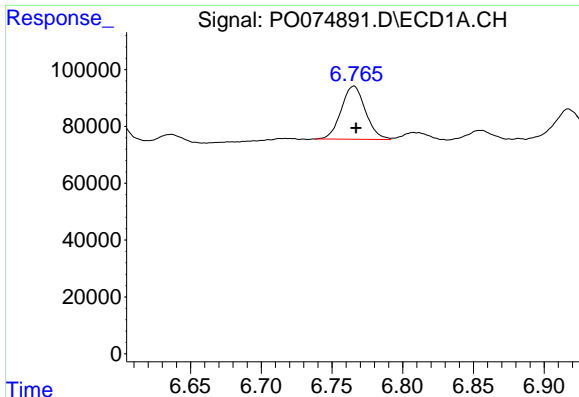
#22 AR-1248-2

R.T.: 6.547 min
 Delta R.T.: -0.002 min
 Response: 473356
 Conc: 152.20 ng/ml



#22 AR-1248-2

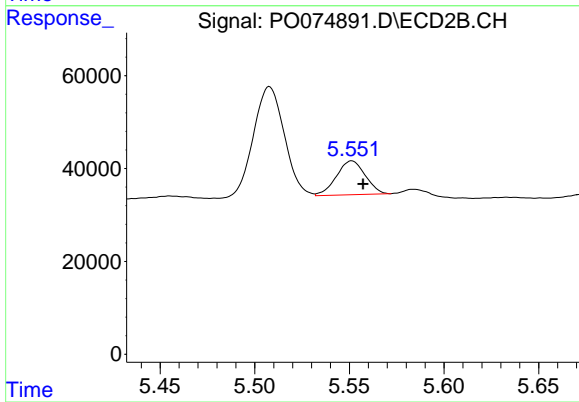
R.T.: 5.508 min
 Delta R.T.: -0.006 min
 Response: 271134
 Conc: 144.27 ng/ml



#23 AR-1248-3

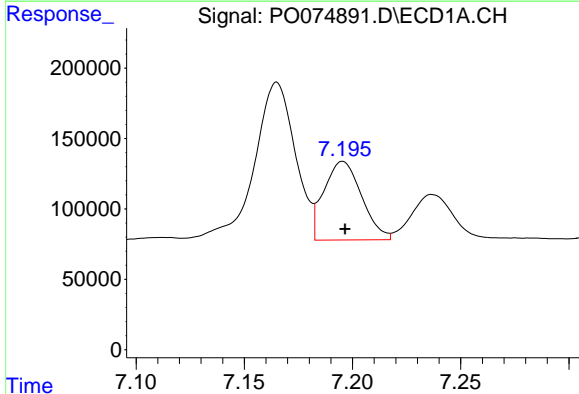
R.T.: 6.765 min
 Delta R.T.: -0.002 min
 Response: 223587
 Conc: 61.74 ng/ml

Instrument :
 ECD_O
 ClientSampleId :
 S2-01-CDL



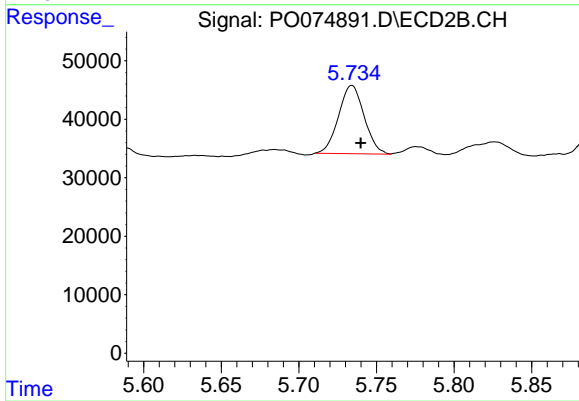
#23 AR-1248-3

R.T.: 5.551 min
 Delta R.T.: -0.006 min
 Response: 77502
 Conc: 41.06 ng/ml



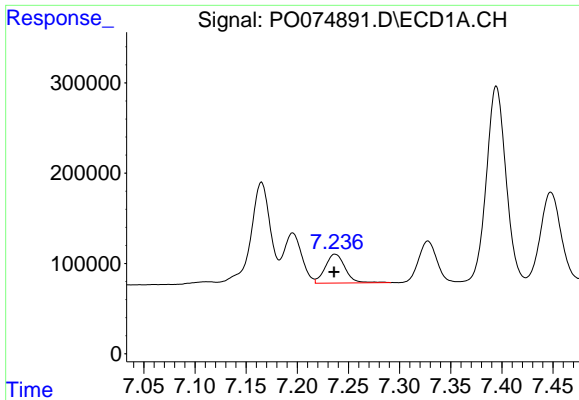
#24 AR-1248-4

R.T.: 7.196 min
 Delta R.T.: -0.001 min
 Response: 679278
 Conc: 152.32 ng/ml



#24 AR-1248-4

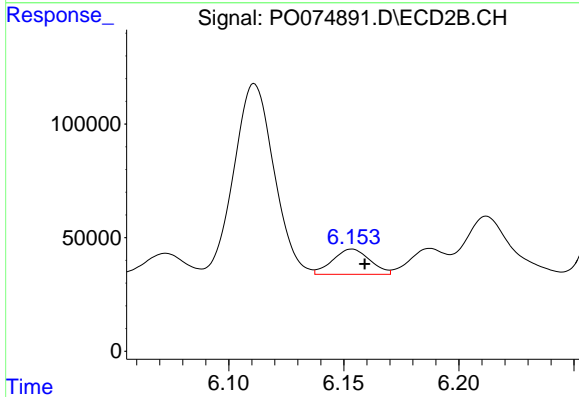
R.T.: 5.734 min
 Delta R.T.: -0.006 min
 Response: 133761
 Conc: 59.39 ng/ml



#25 AR-1248-5

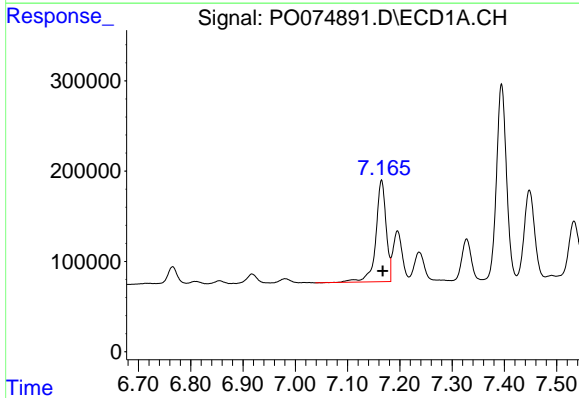
R.T.: 7.237 min
 Delta R.T.: 0.000 min
 Response: 430595
 Conc: 102.18 ng/ml

Instrument :
 ECD_O
 ClientSampled :
 S2-01-CDL



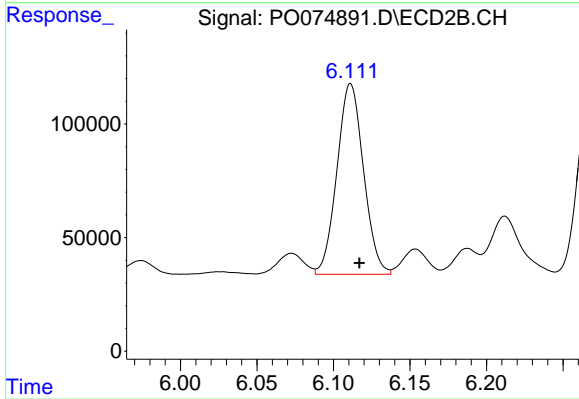
#25 AR-1248-5

R.T.: 6.154 min
 Delta R.T.: -0.006 min
 Response: 125302
 Conc: 53.30 ng/ml



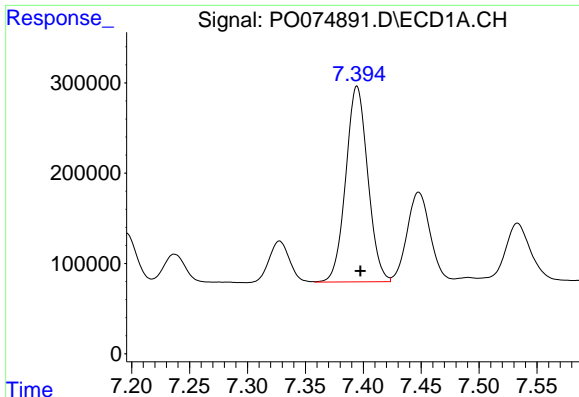
#26 AR-1254-1

R.T.: 7.165 min
 Delta R.T.: -0.002 min
 Response: 1532317
 Conc: 348.40 ng/ml



#26 AR-1254-1

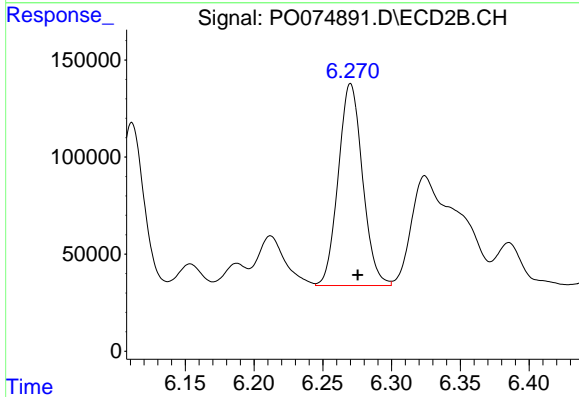
R.T.: 6.111 min
 Delta R.T.: -0.006 min
 Response: 1015761
 Conc: 281.22 ng/ml



#27 AR-1254-2

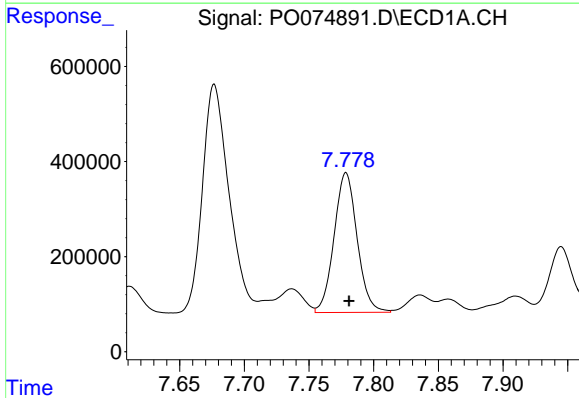
R.T.: 7.395 min
Delta R.T.: -0.003 min
Response: 2865626
Conc: 420.75 ng/ml

Instrument :
ECD_O
ClientSampleId :
S2-01-CDL



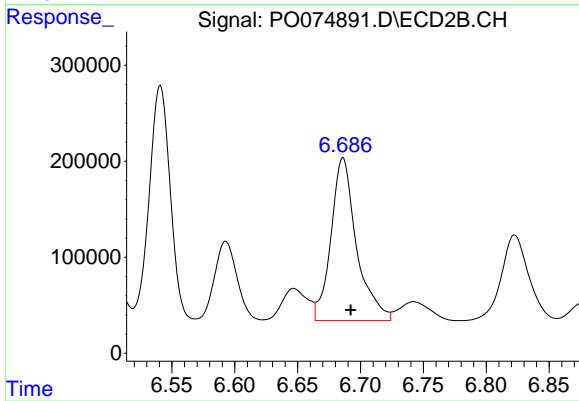
#27 AR-1254-2

R.T.: 6.270 min
Delta R.T.: -0.005 min
Response: 1277304
Conc: 409.85 ng/ml



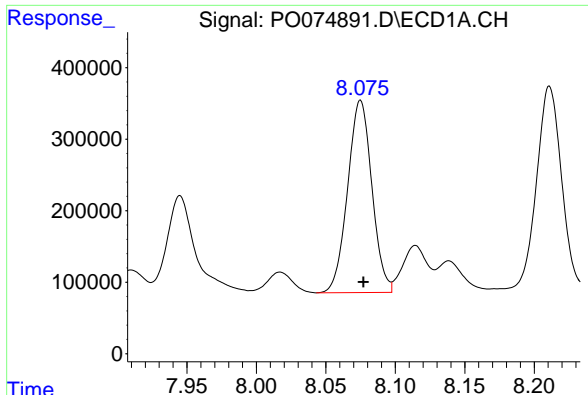
#28 AR-1254-3

R.T.: 7.779 min
Delta R.T.: -0.002 min
Response: 3647159
Conc: 519.96 ng/ml



#28 AR-1254-3

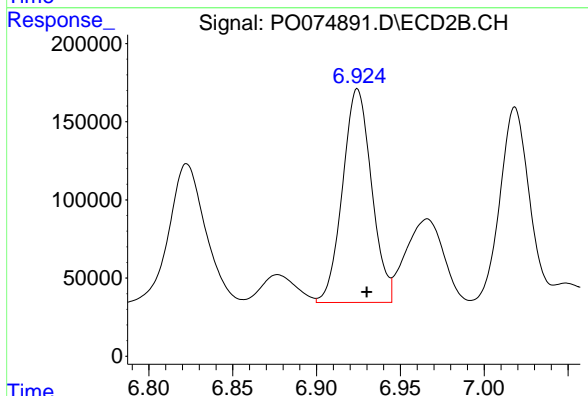
R.T.: 6.686 min
Delta R.T.: -0.006 min
Response: 2407552
Conc: 490.94 ng/ml



#29 AR-1254-4

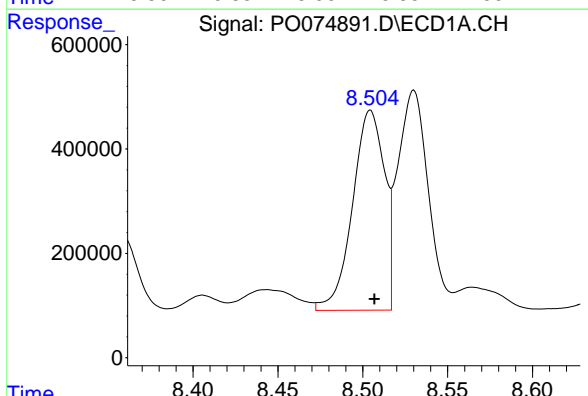
R.T.: 8.075 min
 Delta R.T.: -0.002 min
 Response: 3267670
 Conc: 538.80 ng/ml

Instrument :
 ECD_O
 ClientSampleId :
 S2-01-CDL



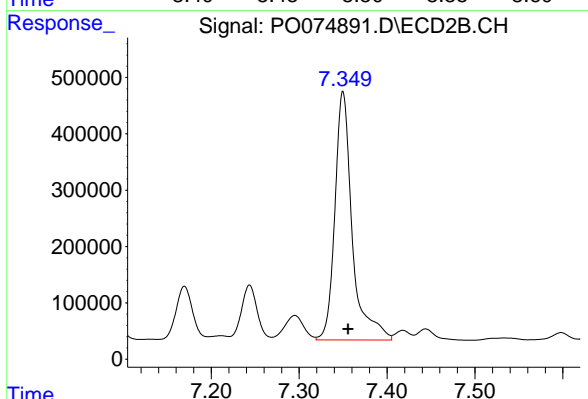
#29 AR-1254-4

R.T.: 6.924 min
 Delta R.T.: -0.006 min
 Response: 1644265
 Conc: 474.15 ng/ml



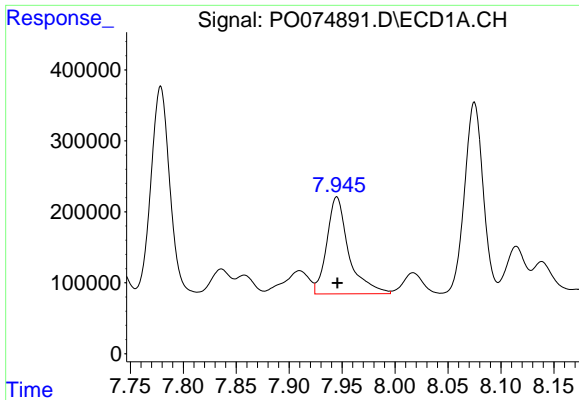
#30 AR-1254-5

R.T.: 8.504 min
 Delta R.T.: -0.002 min
 Response: 5009394
 Conc: 862.36 ng/ml



#30 AR-1254-5

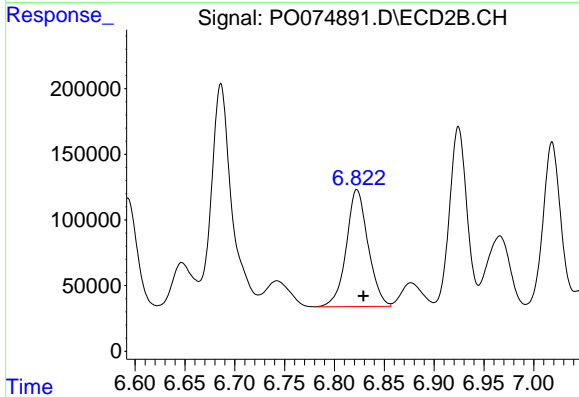
R.T.: 7.350 min
 Delta R.T.: -0.006 min
 Response: 6059878
 Conc: 1338.92 ng/ml



#31 AR-1260-1

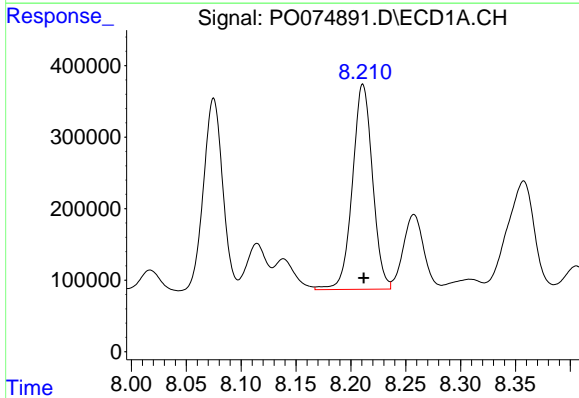
R.T.: 7.945 min
 Delta R.T.: 0.000 min
 Response: 1976277
 Conc: 396.15 ng/ml

Instrument :
 ECD_O
 ClientSampleId :
 S2-01-CDL



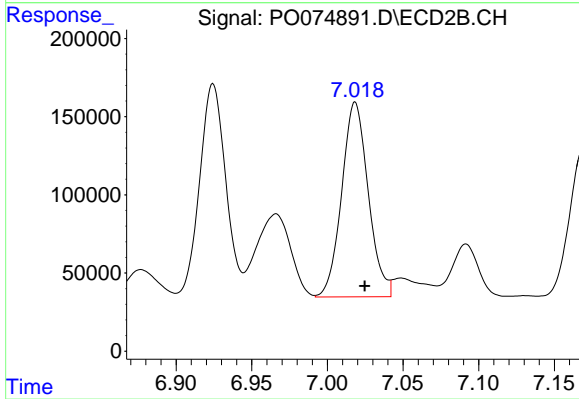
#31 AR-1260-1

R.T.: 6.823 min
 Delta R.T.: -0.006 min
 Response: 1354712
 Conc: 424.64 ng/ml



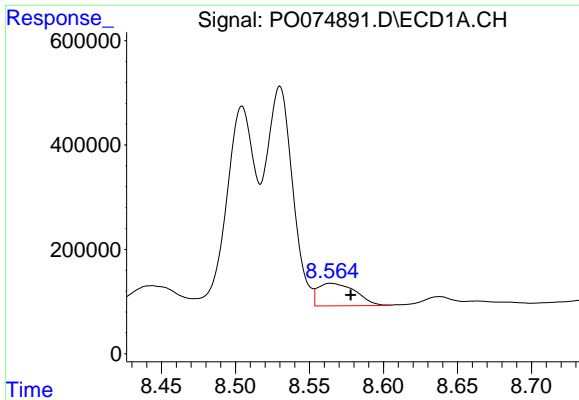
#32 AR-1260-2

R.T.: 8.211 min
 Delta R.T.: 0.000 min
 Response: 3648721
 Conc: 536.41 ng/ml



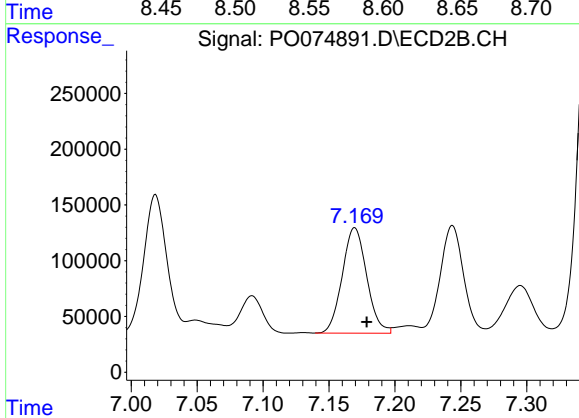
#32 AR-1260-2

R.T.: 7.018 min
 Delta R.T.: -0.006 min
 Response: 1521263
 Conc: 357.86 ng/ml

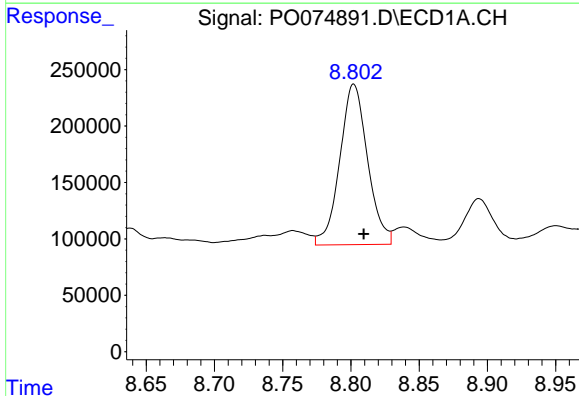


#33 AR-1260-3
 R.T.: 8.564 min
 Delta R.T.: -0.014 min
 Response: 764194
 Conc: 133.33 ng/ml

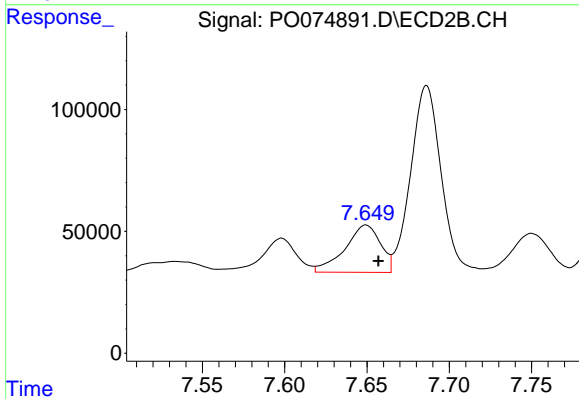
Instrument :
 ECD_O
ClientSampled :
 S2-01-CDL



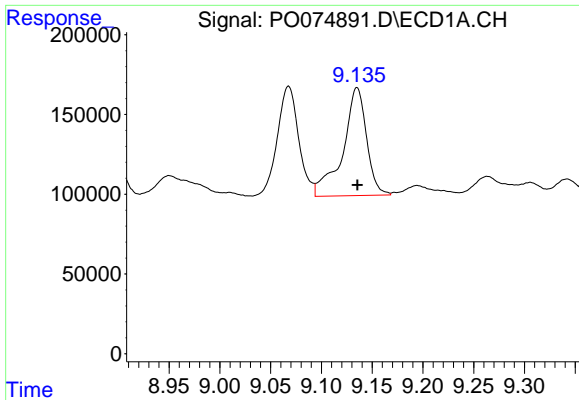
#33 AR-1260-3
 R.T.: 7.169 min
 Delta R.T.: -0.009 min
 Response: 1221467
 Conc: 338.97 ng/ml



#34 AR-1260-4
 R.T.: 8.802 min
 Delta R.T.: -0.007 min
 Response: 2019039
 Conc: 369.02 ng/ml

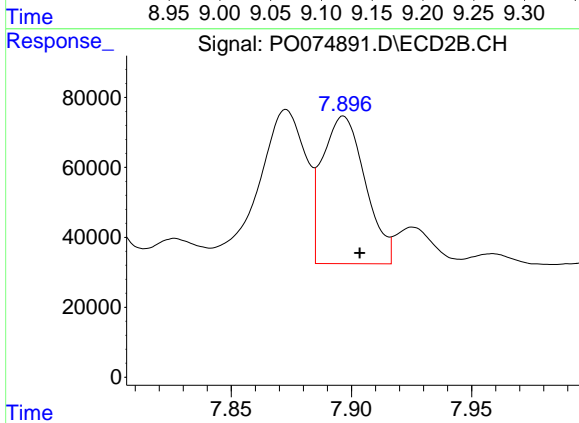


#34 AR-1260-4
 R.T.: 7.649 min
 Delta R.T.: -0.008 min
 Response: 291611
 Conc: 93.13 ng/ml

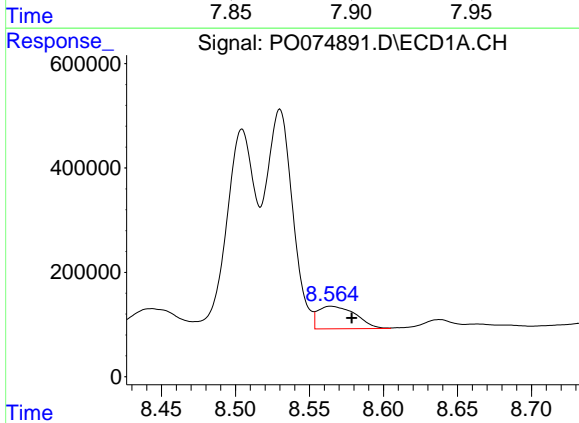


#35 AR-1260-5
 R.T.: 9.135 min
 Delta R.T.: 0.000 min
 Response: 1103561
 Conc: 88.32 ng/ml

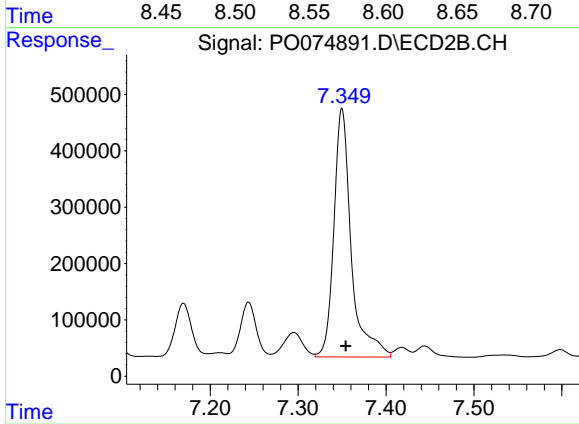
Instrument :
 ECD_O
 ClientSampleId :
 S2-01-CDL



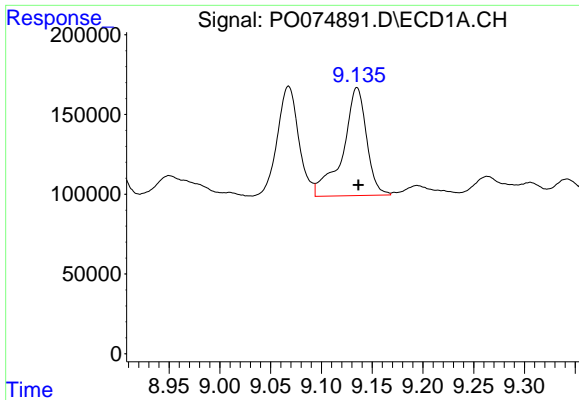
#35 AR-1260-5
 R.T.: 7.897 min
 Delta R.T.: -0.007 min
 Response: 524207
 Conc: 65.95 ng/ml



#36 AR-1262-1
 R.T.: 8.564 min
 Delta R.T.: -0.014 min
 Response: 764194
 Conc: 85.82 ng/ml



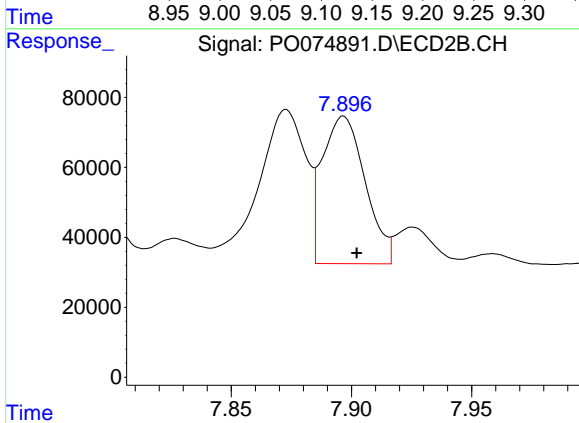
#36 AR-1262-1
 R.T.: 7.350 min
 Delta R.T.: -0.004 min
 Response: 6059878
 Conc: 2381.49 ng/ml



#37 AR-1262-2

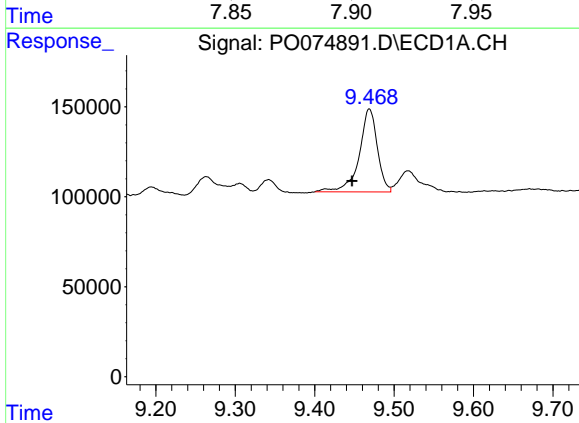
R.T.: 9.135 min
 Delta R.T.: -0.001 min
 Response: 1103561
 Conc: 72.08 ng/ml

Instrument :
 ECD_O
 ClientSampled :
 S2-01-CDL



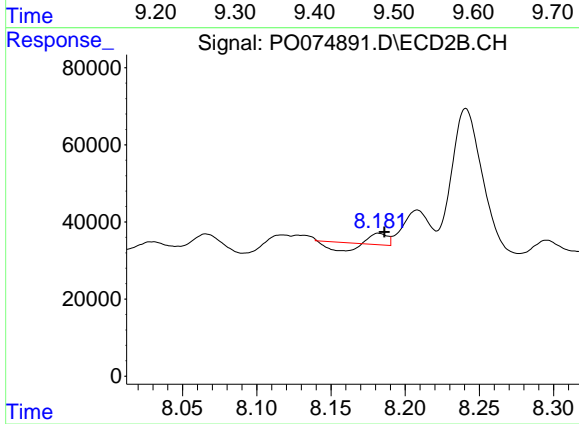
#37 AR-1262-2

R.T.: 7.897 min
 Delta R.T.: -0.005 min
 Response: 524207
 Conc: 57.01 ng/ml



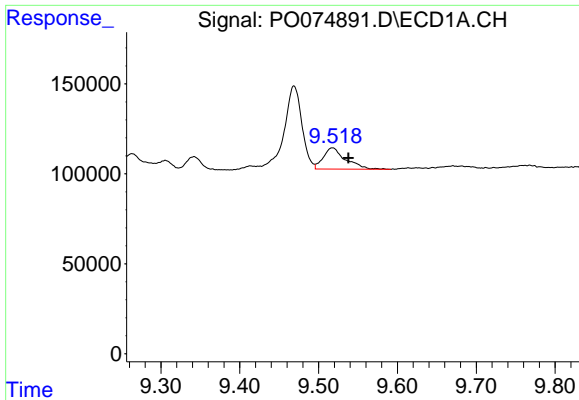
#38 AR-1262-3

R.T.: 9.469 min
 Delta R.T.: 0.022 min
 Response: 735254
 Conc: 73.41 ng/ml



#38 AR-1262-3

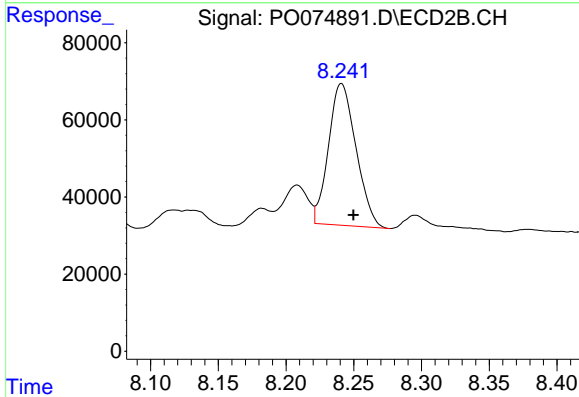
R.T.: 8.182 min
 Delta R.T.: -0.004 min
 Response: 3445
 Conc: 0.87 ng/ml



#39 AR-1262-4

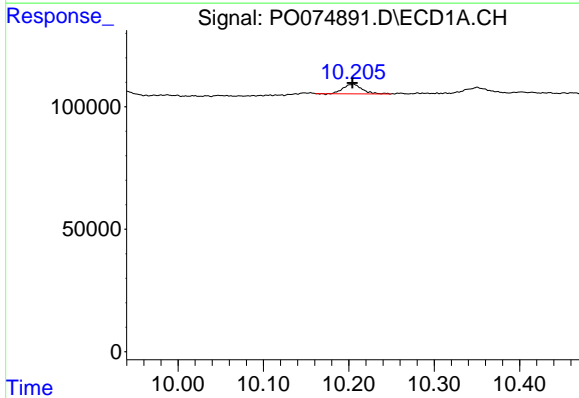
R.T.: 9.518 min
 Delta R.T.: -0.020 min
 Response: 232815
 Conc: 31.26 ng/ml

Instrument :
 ECD_O
 ClientSampled :
 S2-01-CDL



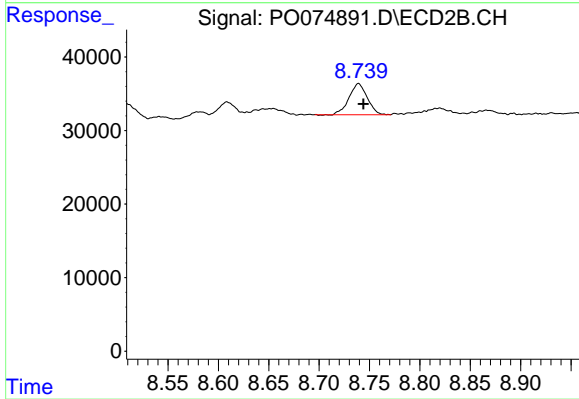
#39 AR-1262-4

R.T.: 8.241 min
 Delta R.T.: -0.009 min
 Response: 519313
 Conc: 78.38 ng/ml



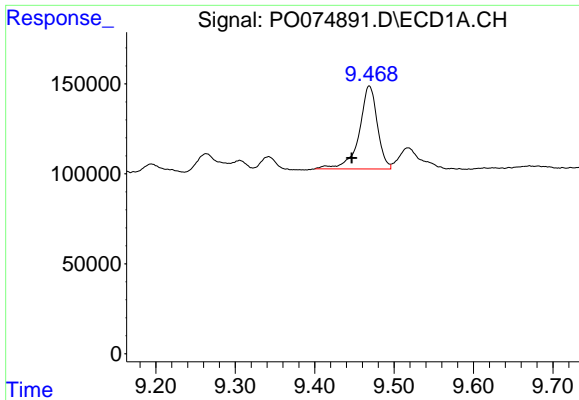
#40 AR-1262-5

R.T.: 10.205 min
 Delta R.T.: 0.001 min
 Response: 61486
 Conc: 11.75 ng/ml



#40 AR-1262-5

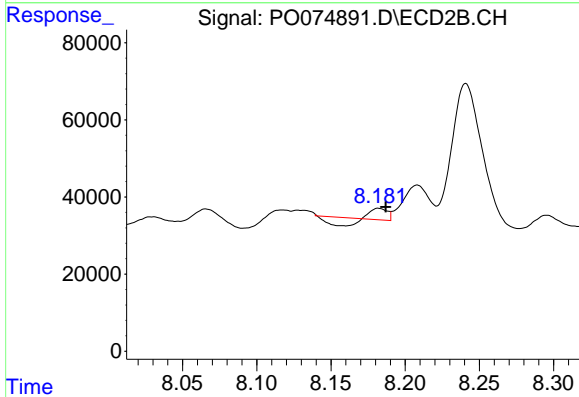
R.T.: 8.739 min
 Delta R.T.: -0.005 min
 Response: 53357
 Conc: 17.28 ng/ml



#41 AR-1268-1

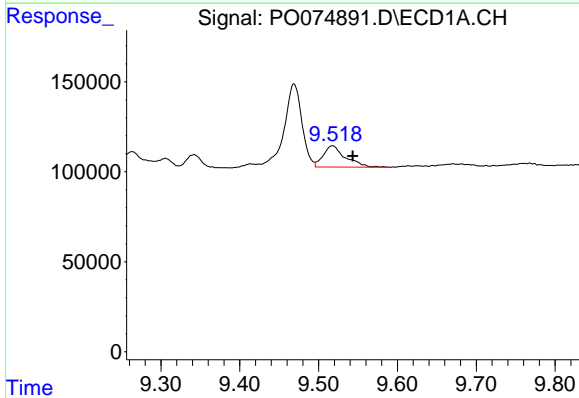
R.T.: 9.469 min
 Delta R.T.: 0.022 min
 Response: 735254
 Conc: 39.35 ng/ml

Instrument :
 ECD_O
 ClientSampled :
 S2-01-CDL



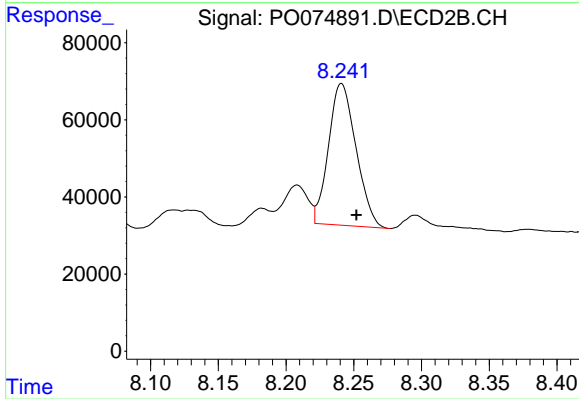
#41 AR-1268-1

R.T.: 8.182 min
 Delta R.T.: -0.005 min
 Response: 3445
 Conc: 0.31 ng/ml



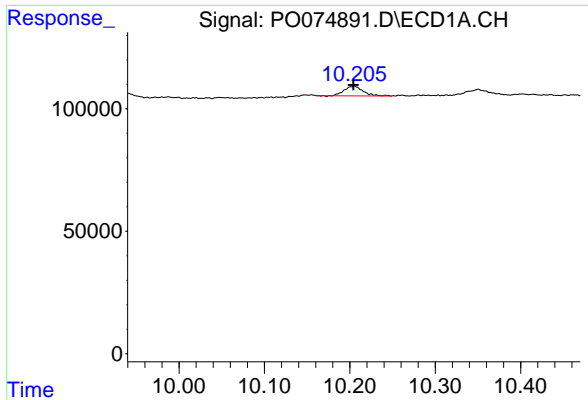
#42 AR-1268-2

R.T.: 9.518 min
 Delta R.T.: -0.026 min
 Response: 232815
 Conc: 14.59 ng/ml



#42 AR-1268-2

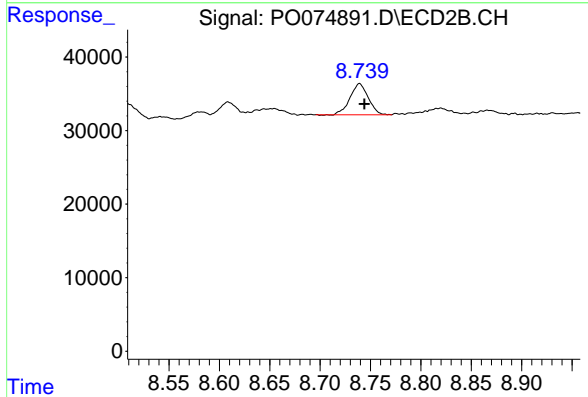
R.T.: 8.241 min
 Delta R.T.: -0.011 min
 Response: 519313
 Conc: 54.28 ng/ml



#44 AR-1268-4

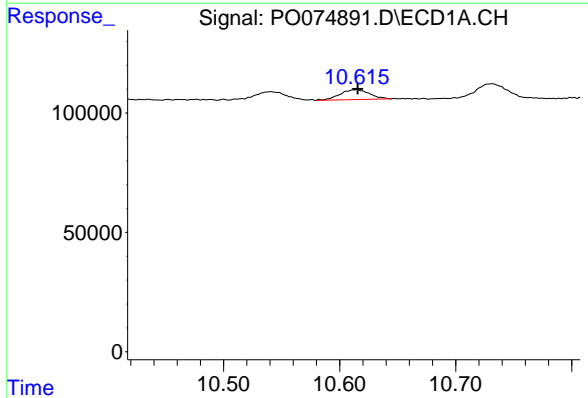
R.T.: 10.205 min
 Delta R.T.: 0.001 min
 Response: 61486
 Conc: 10.50 ng/ml

Instrument :
 ECD_O
 ClientSampleId :
 S2-01-CDL



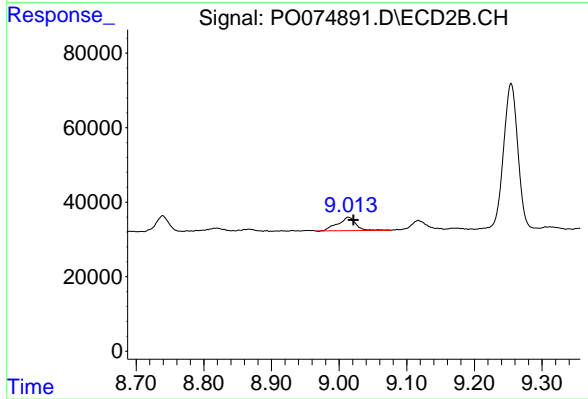
#44 AR-1268-4

R.T.: 8.739 min
 Delta R.T.: -0.005 min
 Response: 53357
 Conc: 15.38 ng/ml



#45 AR-1268-5

R.T.: 10.615 min
 Delta R.T.: 0.000 min
 Response: 74558
 Conc: 1.78 ng/ml



#45 AR-1268-5

R.T.: 9.014 min
 Delta R.T.: -0.007 min
 Response: 66953
 Conc: 2.83 ng/ml