

Data Path : Z:\pestpcbsrv\HPCHEM1\ECD_0\Data\P0011821\
 Data File : P0074912.D
 Signal(s) : Signal #1: ECD1A.CH Signal #2: ECD2B.CH
 Acq On : 19 Jan 2021 3:01
 Operator : AJ/MA
 Sample : M1141-18DL 5X
 Misc :
 ALS Vial : 50 Sample Multiplier: 1

Instrument :
 ECD_0
 ClientSampleID :
 72-12018DL

Integration File signal 1: autoint1.e
 Integration File signal 2: autoint2.e
 Quant Time: Jan 19 04:20:26 2021
 Quant Method : Z:\pestpcbsrv\HPCHEM1\ECD_0\methods\P0011121.M
 Quant Title : GC EXTRACTABLES
 QLast Update : Tue Jan 12 06:02:45 2021
 Response via : Initial Calibration
 Integrator: ChemStation 6890 Scale Mode: Small noise peaks clipped

Volume Inj. : 2 µl
 Signal #1 Phase : ZB-MR1 Signal #2 Phase: ZB-MR2
 Signal #1 Info : 30Mx0.32mmx 0.50µ Signal #2 Info : 30M x 0.32mm x 0.25µm

Compound	RT#1	RT#2	Resp#1	Resp#2	ng/ml	ng/ml
System Monitoring Compounds						
1) SA Tetrachlo...	4.928	4.002	346896	190586	3.288	3.388
2) SA Decachlor...	10.945	9.254	476235	262244	4.692	4.776
Target Compounds						
6) L1 AR-1016-4	0.000	5.508	0	65994	N.D.	46.957 #
7) L1 AR-1016-5	6.765	5.734	43598	27266	15.941	15.856
10) L2 AR-1221-3	5.356	0.000	160123	0	56.836	N.D. #
11) L3 AR-1232-1	5.356	0.000	160123	0	69.915	N.D. #
15) L3 AR-1232-5	6.547	5.734	110010	27266	135.205	39.265 #
20) L4 AR-1242-5	7.236	6.111	52543	500207	20.880	285.697 #
22) L5 AR-1248-2	6.547	5.508	110010	65994	35.372	35.115
23) L5 AR-1248-3	6.765	0.000	43598	0	12.039	N.D. #
24) L5 AR-1248-4	7.194	5.734	72240	27266	16.199	12.105 #
25) L5 AR-1248-5	7.236	0.000	52543	0	12.468	N.D. #
26) L6 AR-1254-1	7.164	6.111	895039	500207	203.504	138.485 #
27) L6 AR-1254-2	7.394	6.270	1210768	607727	177.773	195.001
28) L6 AR-1254-3	7.778	6.705	693780	1232862	98.909	251.403 #
29) L6 AR-1254-4	8.073	6.924	591209	198101	97.484	57.126 #
30) L6 AR-1254-5	8.503	7.349	5153272	2387402	887.128	527.493 #
31) L7 AR-1260-1	7.944	6.822	3263843	1701075	654.242	533.205
32) L7 AR-1260-2	8.211	7.019	4715097	2186572	693.182	514.360 #
33) L7 AR-1260-3	8.578	7.172	4013109	1960892	700.157	544.168
34) L7 AR-1260-4	8.809	7.650	3940884	1785026	720.281	570.055
35) L7 AR-1260-5	9.135	7.898	9188240	4589985	735.355	577.454
36) L8 AR-1262-1	8.578	7.349	4013109	2387402	450.700	938.231 #
37) L8 AR-1262-2	9.135	7.898	9188240	4589985	600.136	499.218
38) L8 AR-1262-3	9.446	8.181	1973173	1101245	197.006	278.492 #
39) L8 AR-1262-4	9.521f	8.243	3287404	3314711	441.420	500.318
40) L8 AR-1262-5	10.202	8.739	2409275	1250319	460.525	404.972
41) L9 AR-1268-1	9.446	8.181	1973173	1101245	105.611	98.372
42) L9 AR-1268-2	9.521f	8.243	3287404	3314711	206.043	346.466 #
43) L9 AR-1268-3	9.766	8.450	96988	51357	6.829	6.181
44) L9 AR-1268-4	10.202	8.739	2409275	1250319	411.241	360.411
45) L9 AR-1268-5	10.612	9.015	561420	303545	13.435	12.819

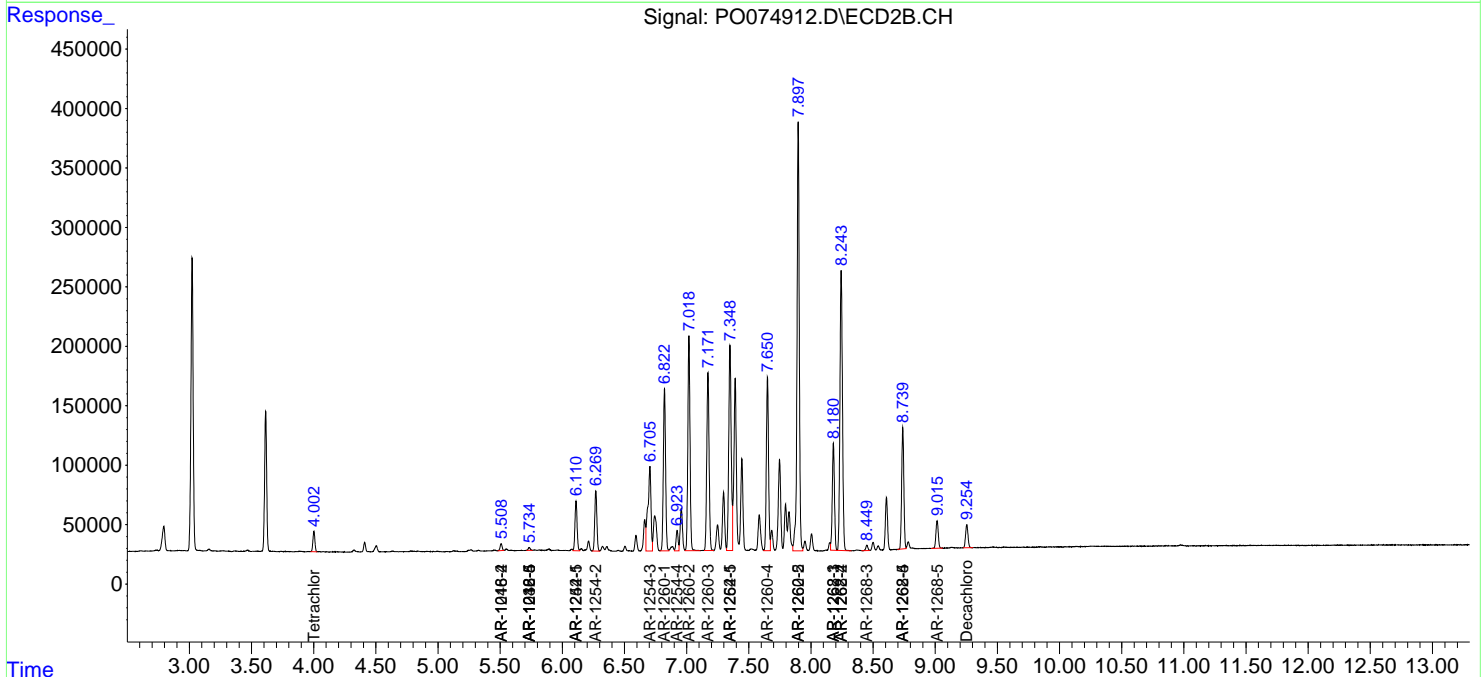
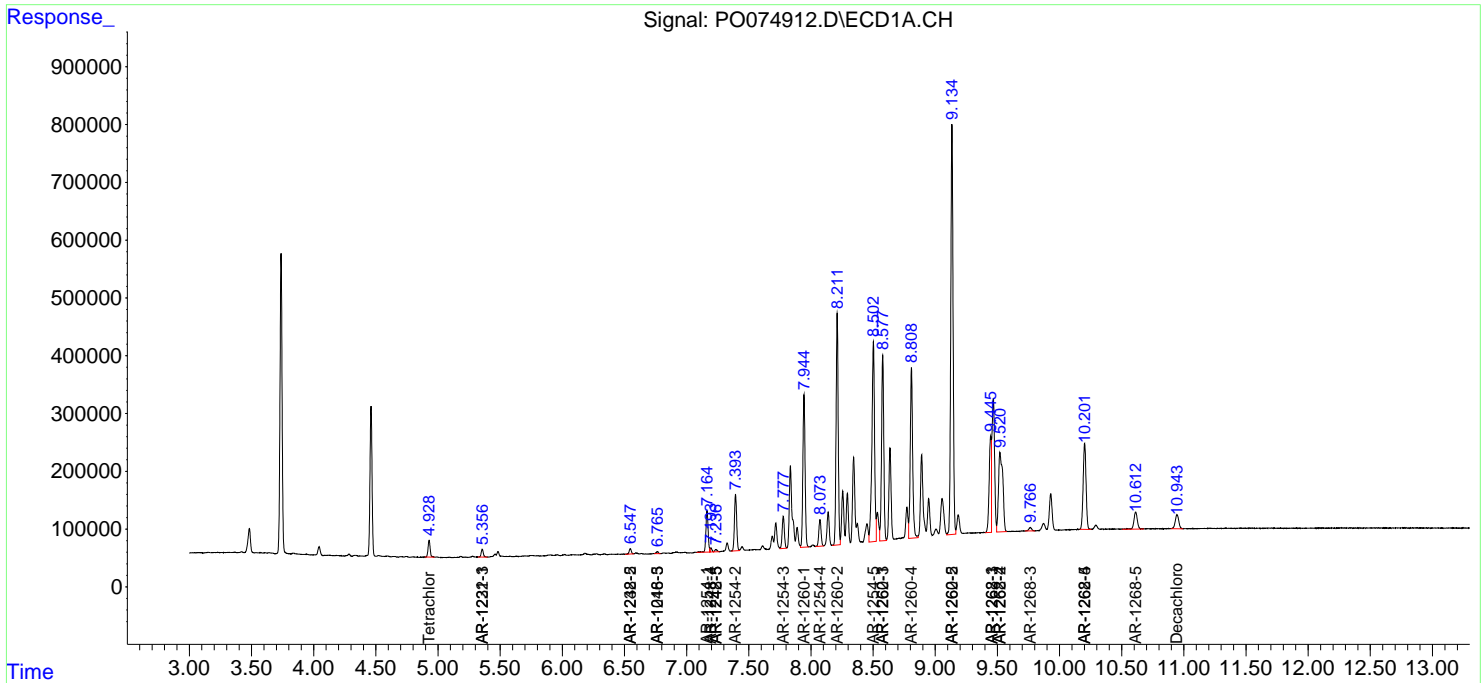
(f)=RT Delta > 1/2 Window (#)=Amounts differ by > 25% (m)=manual int.

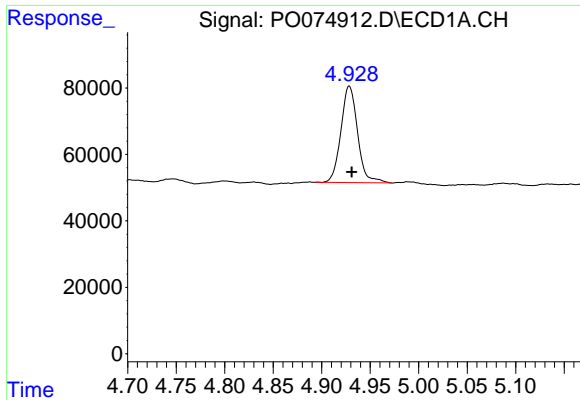
Data Path : Z:\pestpcbsrv\HPCHEM1\ECD_O\Data\P0011821\
 Data File : P0074912.D
 Signal(s) : Signal #1: ECD1A.CH Signal #2: ECD2B.CH
 Acq On : 19 Jan 2021 3:01
 Operator : AJ/MA
 Sample : M1141-18DL 5X
 Misc :
 ALS Vial : 50 Sample Multiplier: 1

Instrument :
 ECD_O
 ClientSampled :
 72-12018DL

Integration File signal 1: autoint1.e
 Integration File signal 2: autoint2.e
 Quant Time: Jan 19 04:20:26 2021
 Quant Method : Z:\pestpcbsrv\HPCHEM1\ECD_O\methods\P0011121.M
 Quant Title : GC EXTRACTABLES
 QLast Update : Tue Jan 12 06:02:45 2021
 Response via : Initial Calibration
 Integrator: ChemStation 6890 Scale Mode: Small noise peaks clipped

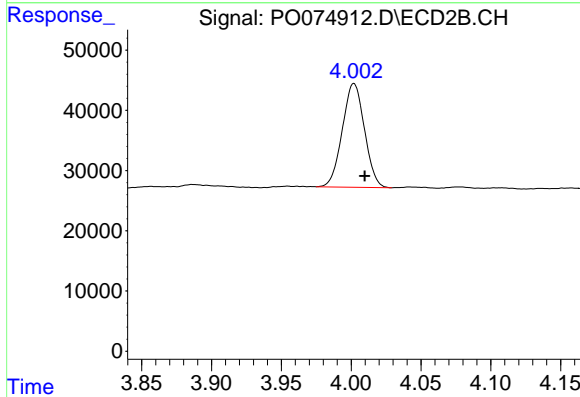
Volume Inj. : 2 µl
 Signal #1 Phase : ZB-MR1 Signal #2 Phase: ZB-MR2
 Signal #1 Info : 30Mx0.32mmx 0.50µ Signal #2 Info : 30M x 0.32mm x 0.25µm



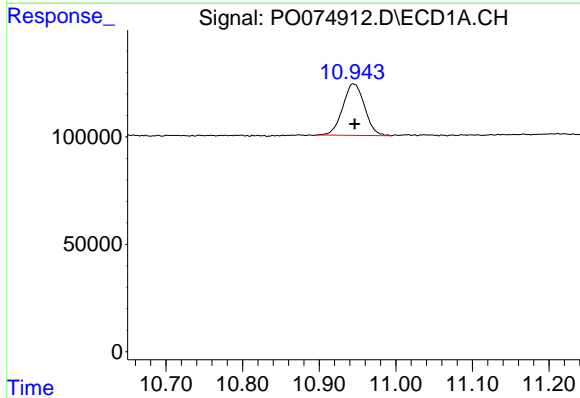


#1 Tetrachloro-m-xylene
 R.T.: 4.928 min
 Delta R.T.: -0.003 min
 Response: 346896
 Conc: 3.29 ng/ml

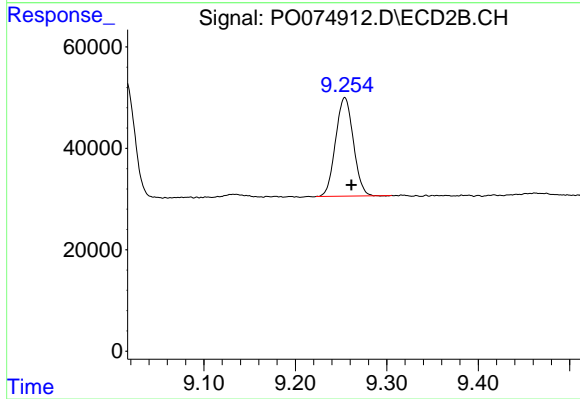
Instrument :
 ECD_O
 ClientSampleId :
 72-12018DL



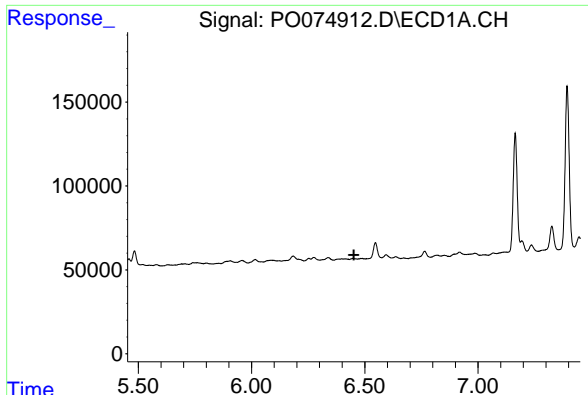
#1 Tetrachloro-m-xylene
 R.T.: 4.002 min
 Delta R.T.: -0.008 min
 Response: 190586
 Conc: 3.39 ng/ml



#2 Decachlorobiphenyl
 R.T.: 10.945 min
 Delta R.T.: -0.002 min
 Response: 476235
 Conc: 4.69 ng/ml



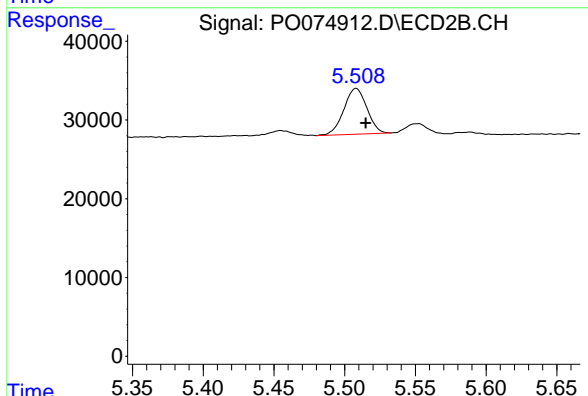
#2 Decachlorobiphenyl
 R.T.: 9.254 min
 Delta R.T.: -0.007 min
 Response: 262244
 Conc: 4.78 ng/ml



#6 AR-1016-4

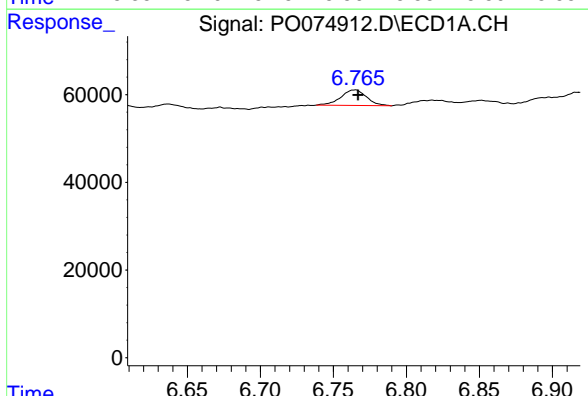
R.T.: 0.000 min
 Exp R.T.: 6.452 min
 Response: 0
 Conc: N.D.

Instrument :
 ECD_O
 ClientSampleId :
 72-12018DL



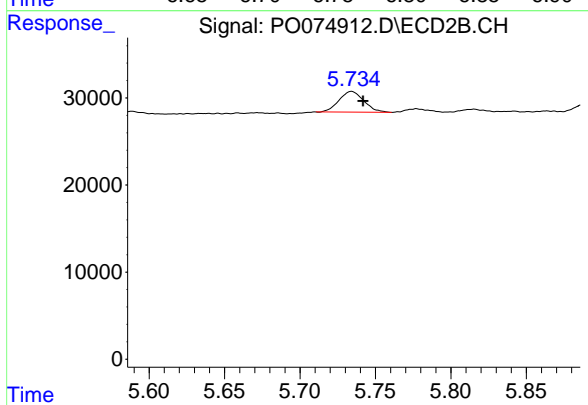
#6 AR-1016-4

R.T.: 5.508 min
 Delta R.T.: -0.007 min
 Response: 65994
 Conc: 46.96 ng/ml



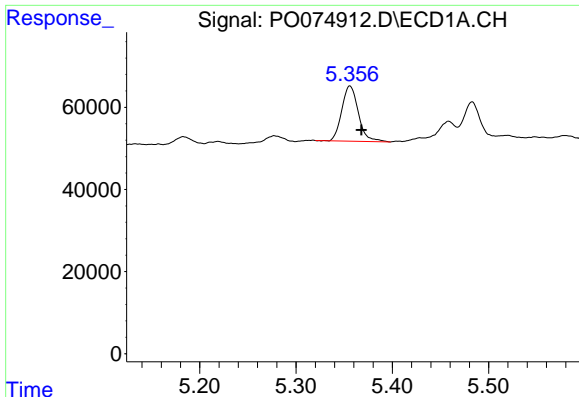
#7 AR-1016-5

R.T.: 6.765 min
 Delta R.T.: -0.002 min
 Response: 43598
 Conc: 15.94 ng/ml



#7 AR-1016-5

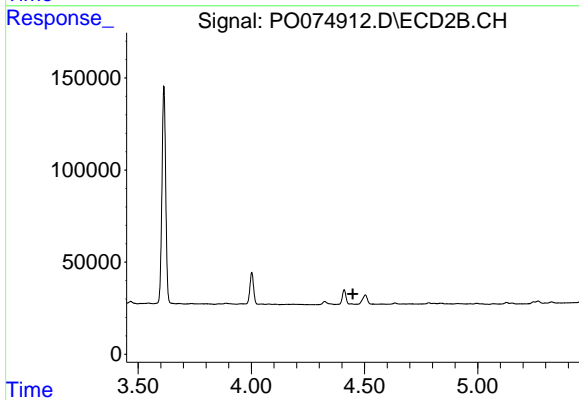
R.T.: 5.734 min
 Delta R.T.: -0.008 min
 Response: 27266
 Conc: 15.86 ng/ml



#10 AR-1221-3

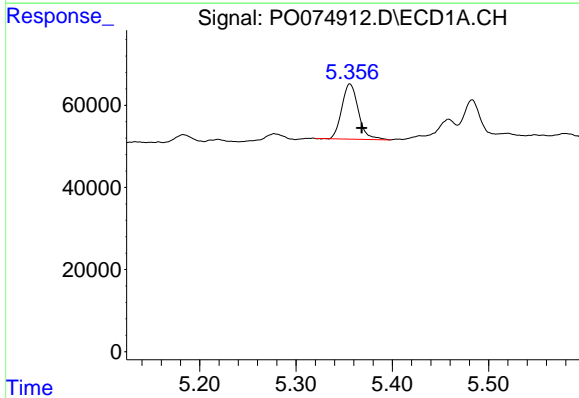
R.T.: 5.356 min
 Delta R.T.: -0.012 min
 Response: 160123
 Conc: 56.84 ng/ml

Instrument :
 ECD_O
 ClientSampled :
 72-12018DL



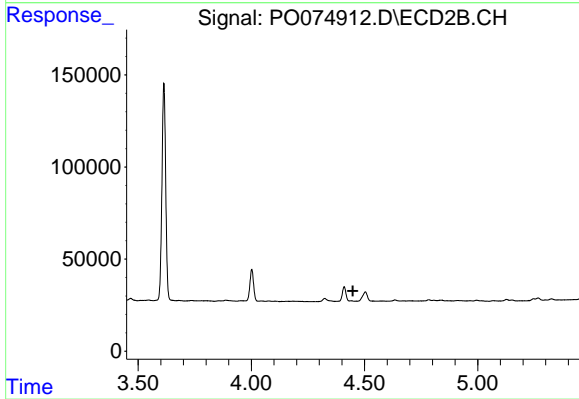
#10 AR-1221-3

R.T.: 0.000 min
 Exp R.T. : 4.449 min
 Response: 0
 Conc: N.D.



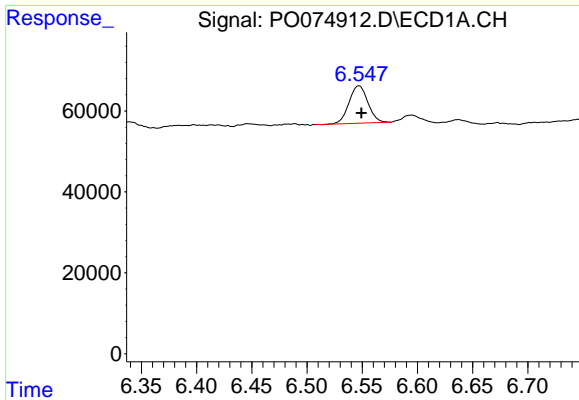
#11 AR-1232-1

R.T.: 5.356 min
 Delta R.T.: -0.012 min
 Response: 160123
 Conc: 69.92 ng/ml



#11 AR-1232-1

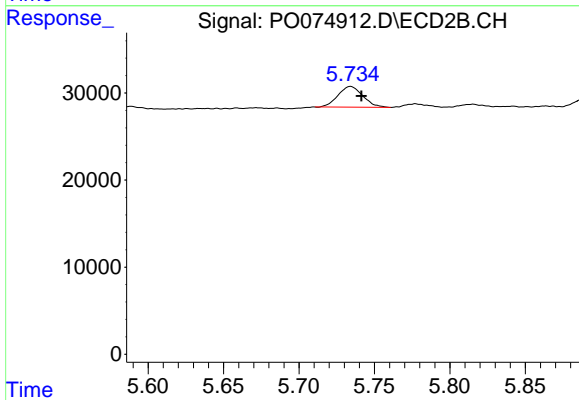
R.T.: 0.000 min
 Exp R.T. : 4.448 min
 Response: 0
 Conc: N.D.



#15 AR-1232-5

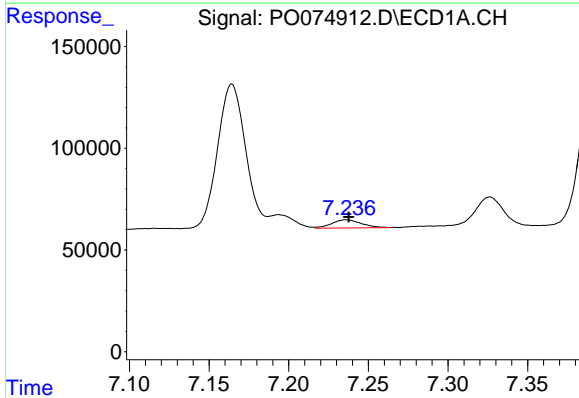
R.T.: 6.547 min
 Delta R.T.: -0.002 min
 Response: 110010
 Conc: 135.21 ng/ml

Instrument :
 ECD_O
 ClientSampleId :
 72-12018DL



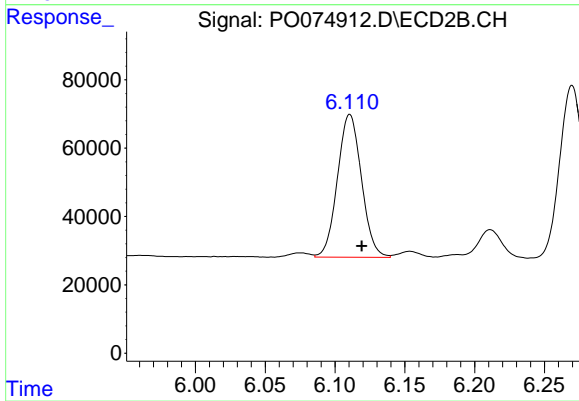
#15 AR-1232-5

R.T.: 5.734 min
 Delta R.T.: -0.007 min
 Response: 27266
 Conc: 39.27 ng/ml



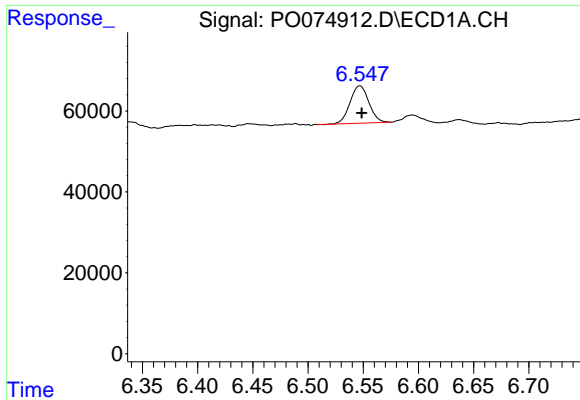
#20 AR-1242-5

R.T.: 7.236 min
 Delta R.T.: -0.001 min
 Response: 52543
 Conc: 20.88 ng/ml



#20 AR-1242-5

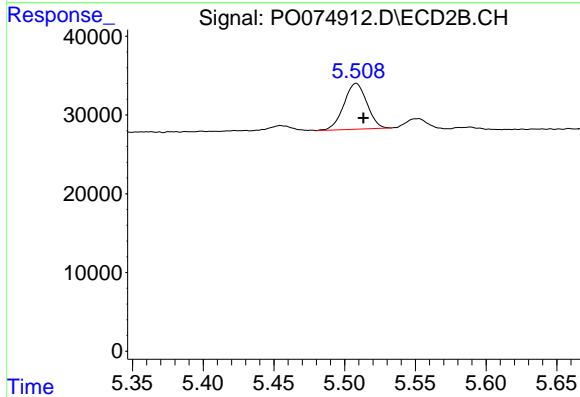
R.T.: 6.111 min
 Delta R.T.: -0.009 min
 Response: 500207
 Conc: 285.70 ng/ml



#22 AR-1248-2

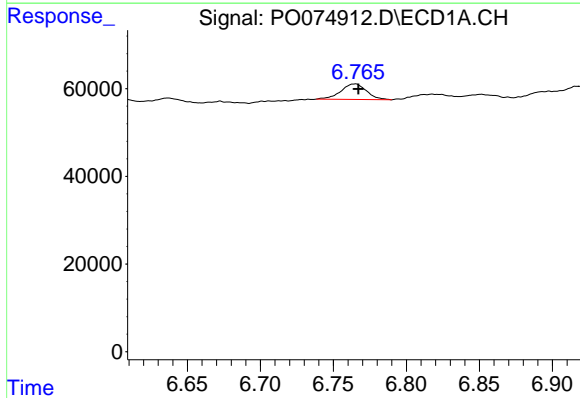
R.T.: 6.547 min
 Delta R.T.: -0.002 min
 Response: 110010
 Conc: 35.37 ng/ml

Instrument :
 ECD_O
 ClientSampleId :
 72-12018DL



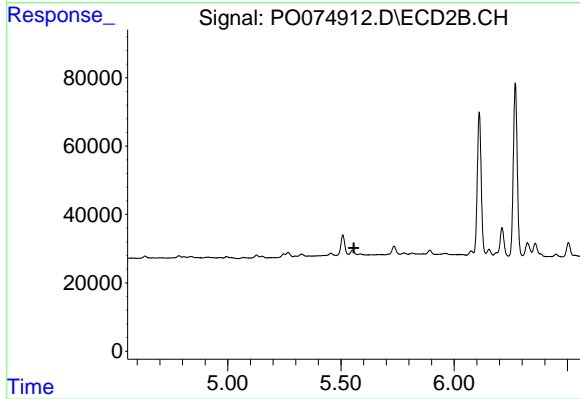
#22 AR-1248-2

R.T.: 5.508 min
 Delta R.T.: -0.005 min
 Response: 65994
 Conc: 35.12 ng/ml



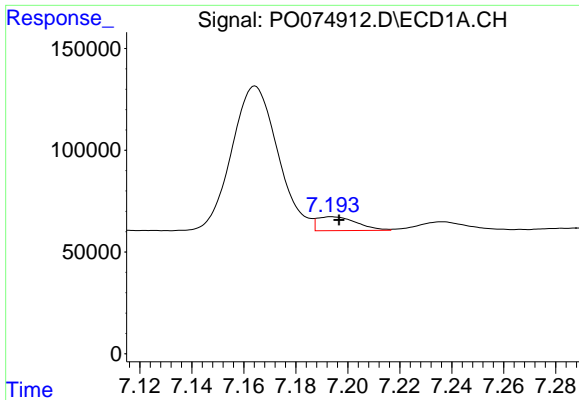
#23 AR-1248-3

R.T.: 6.765 min
 Delta R.T.: -0.002 min
 Response: 43598
 Conc: 12.04 ng/ml



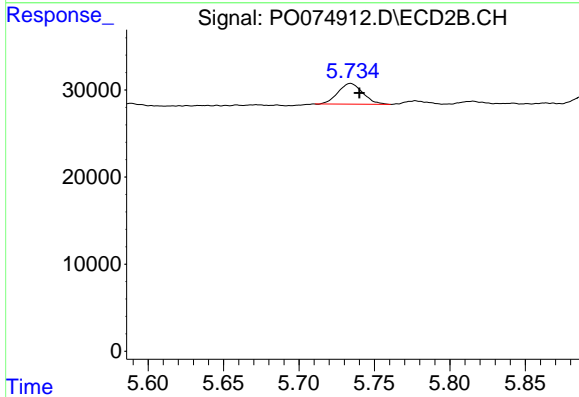
#23 AR-1248-3

R.T.: 0.000 min
 Exp R.T. : 5.557 min
 Response: 0
 Conc: N.D.

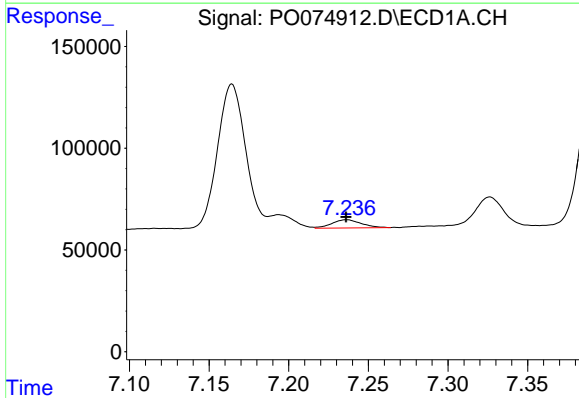


#24 AR-1248-4
 R.T.: 7.194 min
 Delta R.T.: -0.003 min
 Response: 72240
 Conc: 16.20 ng/ml

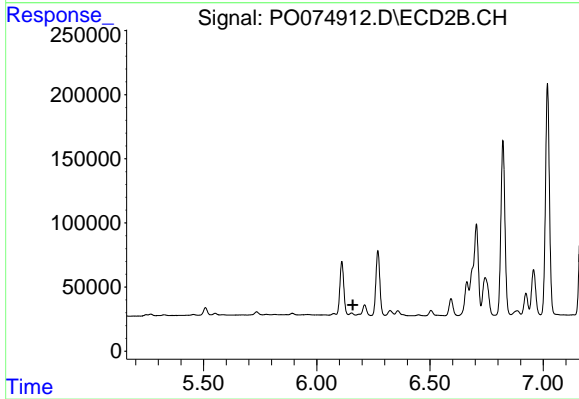
Instrument :
 ECD_O
 ClientSampled :
 72-12018DL



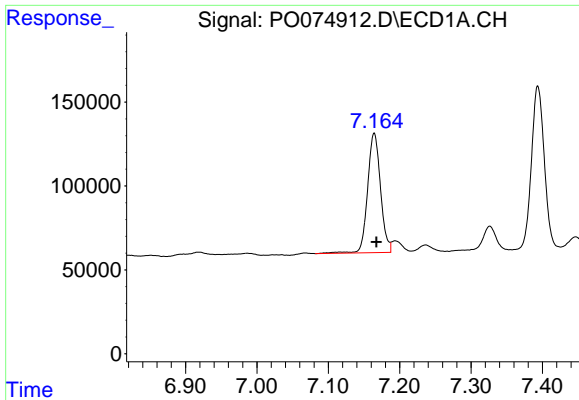
#24 AR-1248-4
 R.T.: 5.734 min
 Delta R.T.: -0.006 min
 Response: 27266
 Conc: 12.11 ng/ml



#25 AR-1248-5
 R.T.: 7.236 min
 Delta R.T.: 0.000 min
 Response: 52543
 Conc: 12.47 ng/ml



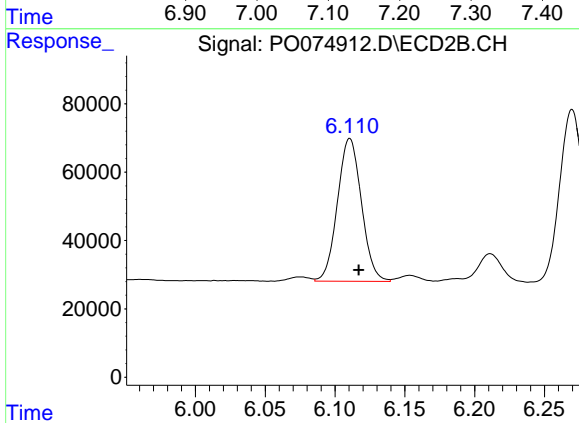
#25 AR-1248-5
 R.T.: 0.000 min
 Exp R.T. : 6.159 min
 Response: 0
 Conc: N.D.



#26 AR-1254-1

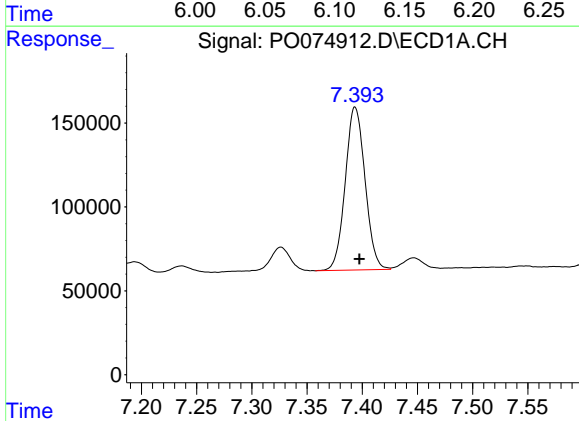
R.T.: 7.164 min
 Delta R.T.: -0.003 min
 Response: 895039
 Conc: 203.50 ng/ml

Instrument :
 ECD_O
 ClientSampled :
 72-12018DL



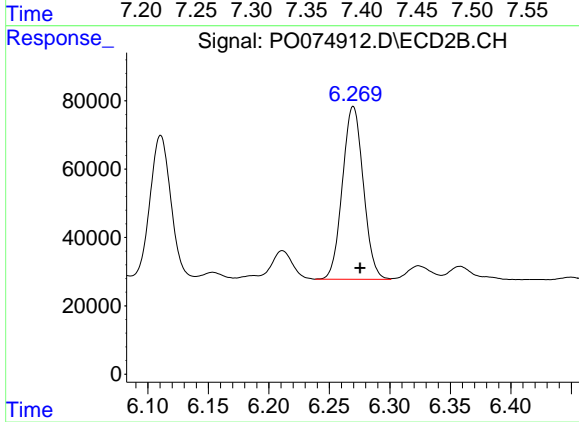
#26 AR-1254-1

R.T.: 6.111 min
 Delta R.T.: -0.006 min
 Response: 500207
 Conc: 138.48 ng/ml



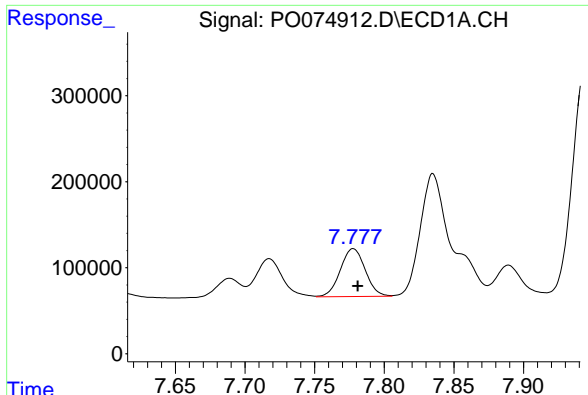
#27 AR-1254-2

R.T.: 7.394 min
 Delta R.T.: -0.004 min
 Response: 1210768
 Conc: 177.77 ng/ml



#27 AR-1254-2

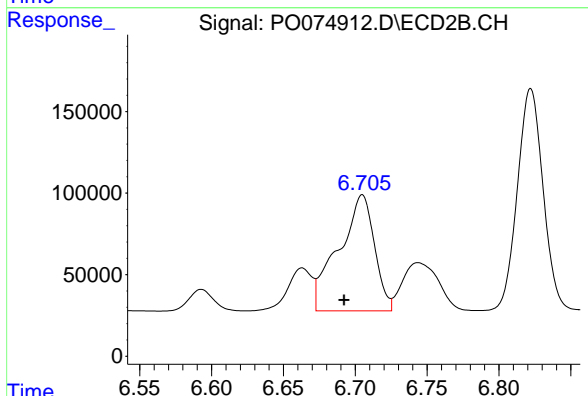
R.T.: 6.270 min
 Delta R.T.: -0.006 min
 Response: 607727
 Conc: 195.00 ng/ml



#28 AR-1254-3

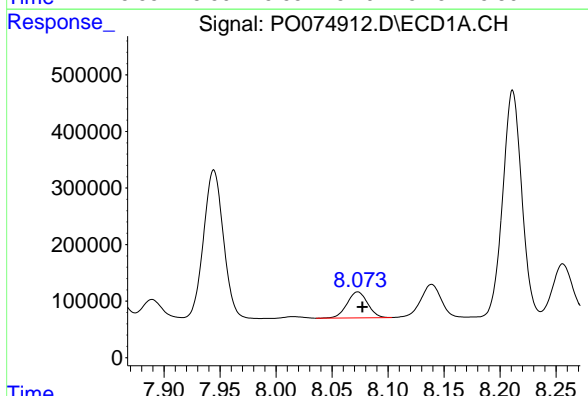
R.T.: 7.778 min
 Delta R.T.: -0.003 min
 Response: 693780
 Conc: 98.91 ng/ml

Instrument :
 ECD_O
 ClientSampled :
 72-12018DL



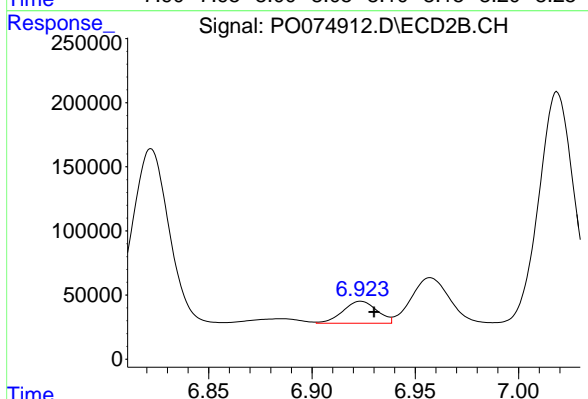
#28 AR-1254-3

R.T.: 6.705 min
 Delta R.T.: 0.013 min
 Response: 1232862
 Conc: 251.40 ng/ml



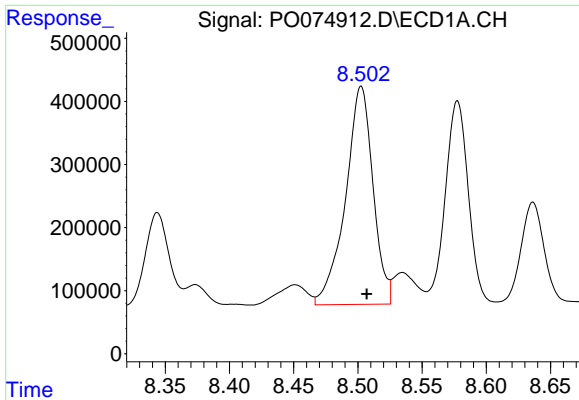
#29 AR-1254-4

R.T.: 8.073 min
 Delta R.T.: -0.004 min
 Response: 591209
 Conc: 97.48 ng/ml



#29 AR-1254-4

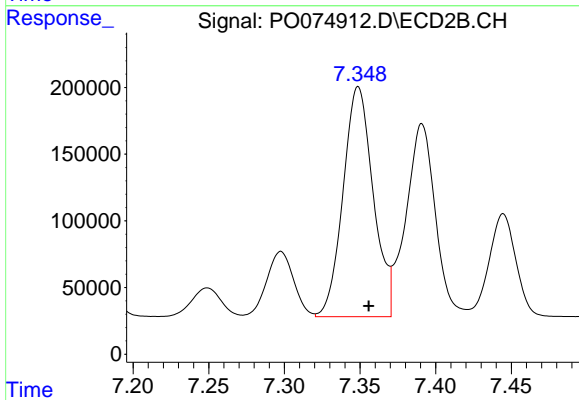
R.T.: 6.924 min
 Delta R.T.: -0.006 min
 Response: 198101
 Conc: 57.13 ng/ml



#30 AR-1254-5

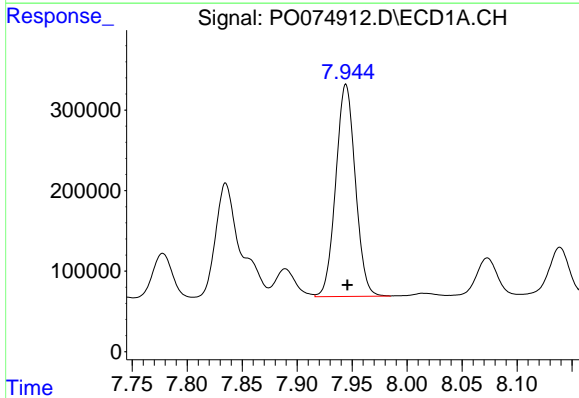
R.T.: 8.503 min
 Delta R.T.: -0.004 min
 Response: 5153272
 Conc: 887.13 ng/ml

Instrument :
 ECD_O
 ClientSampleId :
 72-12018DL



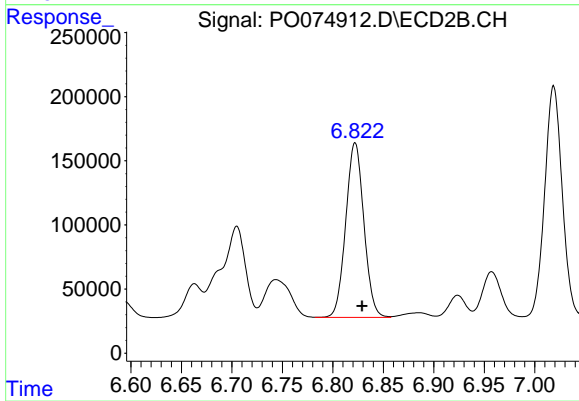
#30 AR-1254-5

R.T.: 7.349 min
 Delta R.T.: -0.007 min
 Response: 2387402
 Conc: 527.49 ng/ml



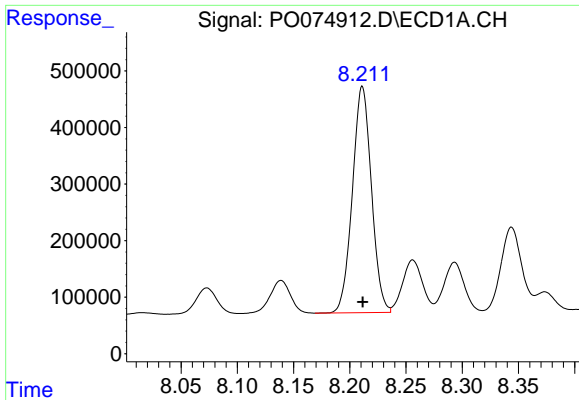
#31 AR-1260-1

R.T.: 7.944 min
 Delta R.T.: -0.001 min
 Response: 3263843
 Conc: 654.24 ng/ml



#31 AR-1260-1

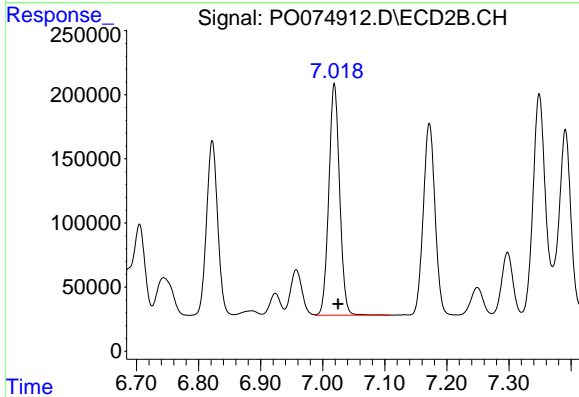
R.T.: 6.822 min
 Delta R.T.: -0.007 min
 Response: 1701075
 Conc: 533.21 ng/ml



#32 AR-1260-2

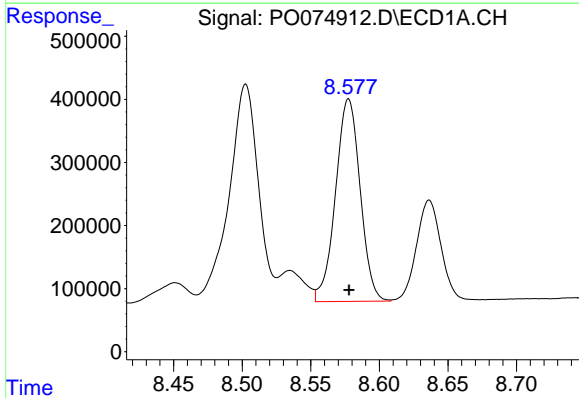
R.T.: 8.211 min
 Delta R.T.: 0.000 min
 Response: 4715097
 Conc: 693.18 ng/ml

Instrument :
 ECD_O
 ClientSampled :
 72-12018DL



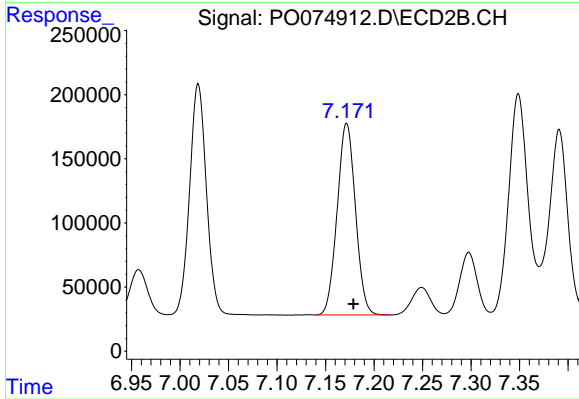
#32 AR-1260-2

R.T.: 7.019 min
 Delta R.T.: -0.006 min
 Response: 2186572
 Conc: 514.36 ng/ml



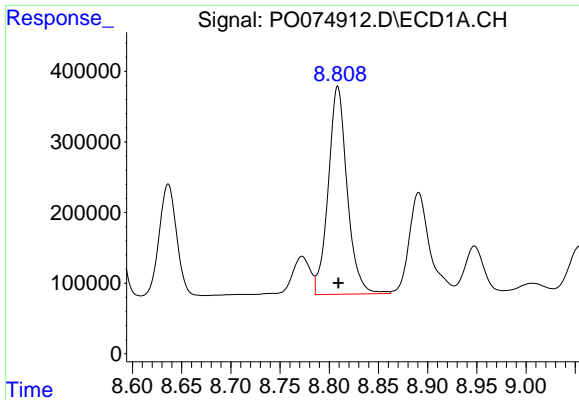
#33 AR-1260-3

R.T.: 8.578 min
 Delta R.T.: 0.000 min
 Response: 4013109
 Conc: 700.16 ng/ml



#33 AR-1260-3

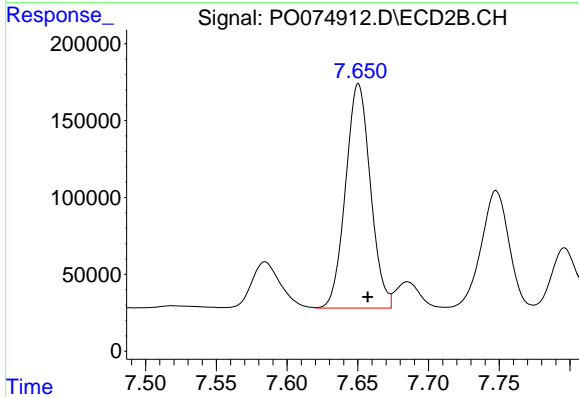
R.T.: 7.172 min
 Delta R.T.: -0.007 min
 Response: 1960892
 Conc: 544.17 ng/ml



#34 AR-1260-4

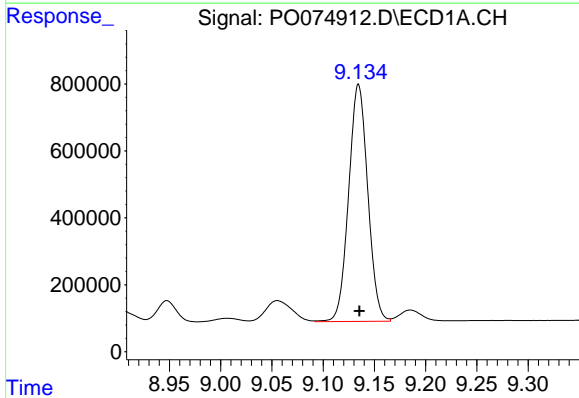
R.T.: 8.809 min
 Delta R.T.: 0.000 min
 Response: 3940884
 Conc: 720.28 ng/ml

Instrument :
 ECD_O
 ClientSampled :
 72-12018DL



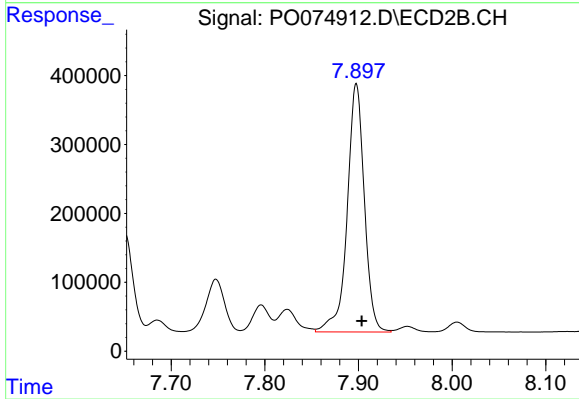
#34 AR-1260-4

R.T.: 7.650 min
 Delta R.T.: -0.006 min
 Response: 1785026
 Conc: 570.06 ng/ml



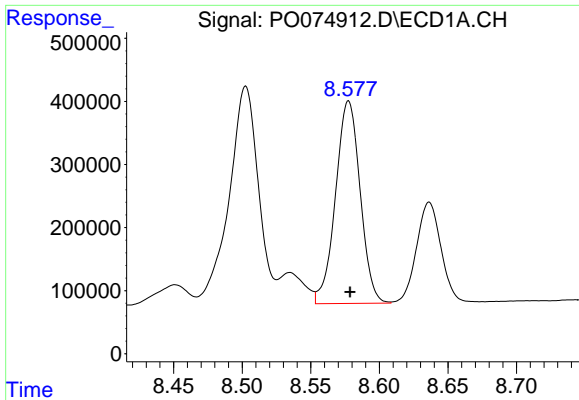
#35 AR-1260-5

R.T.: 9.135 min
 Delta R.T.: 0.000 min
 Response: 9188240
 Conc: 735.35 ng/ml



#35 AR-1260-5

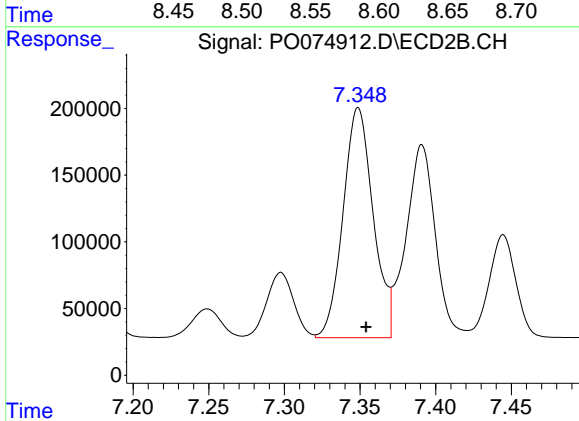
R.T.: 7.898 min
 Delta R.T.: -0.006 min
 Response: 4589985
 Conc: 577.45 ng/ml



#36 AR-1262-1

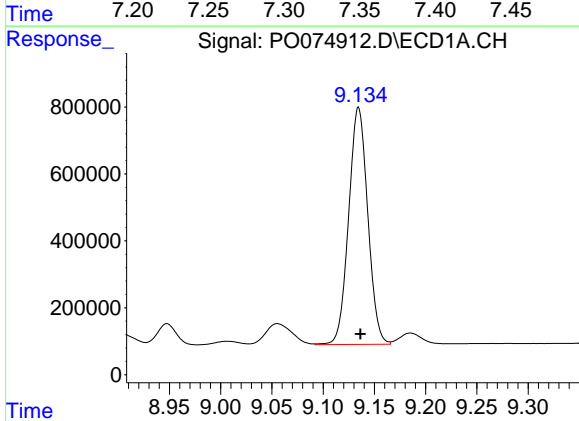
R.T.: 8.578 min
 Delta R.T.: 0.000 min
 Response: 4013109
 Conc: 450.70 ng/ml

Instrument :
 ECD_O
 ClientSampled :
 72-12018DL



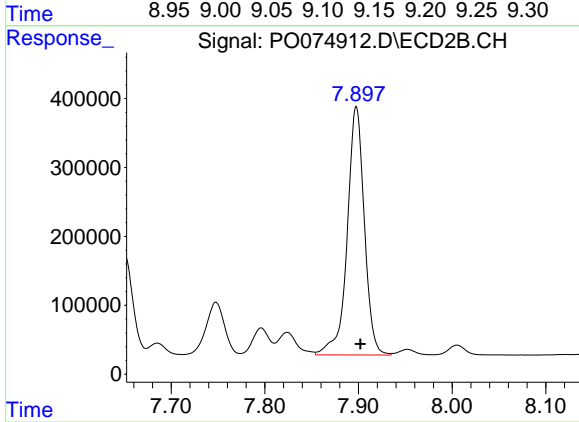
#36 AR-1262-1

R.T.: 7.349 min
 Delta R.T.: -0.005 min
 Response: 2387402
 Conc: 938.23 ng/ml



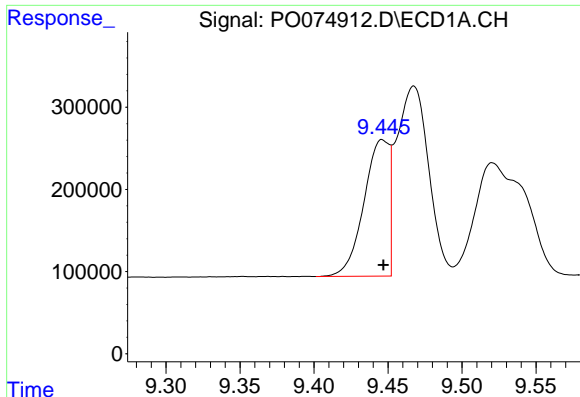
#37 AR-1262-2

R.T.: 9.135 min
 Delta R.T.: -0.002 min
 Response: 9188240
 Conc: 600.14 ng/ml



#37 AR-1262-2

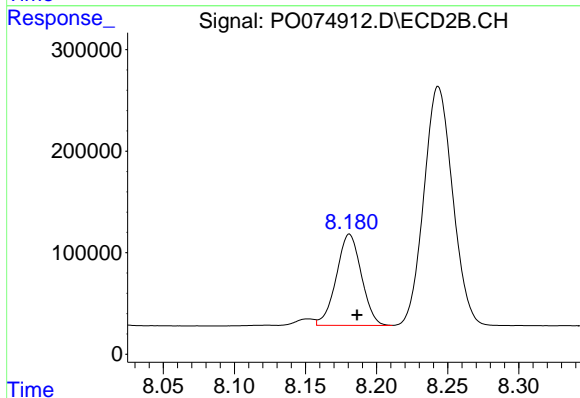
R.T.: 7.898 min
 Delta R.T.: -0.004 min
 Response: 4589985
 Conc: 499.22 ng/ml



#38 AR-1262-3

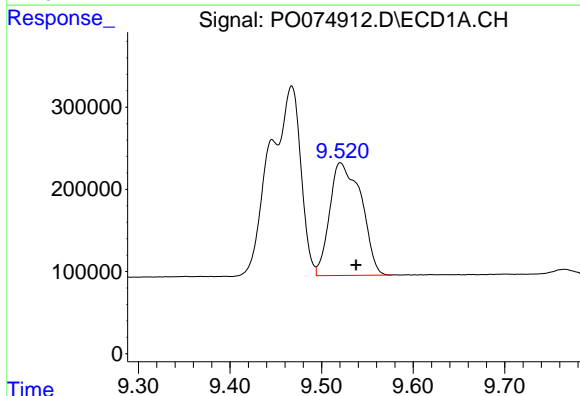
R.T.: 9.446 min
 Delta R.T.: 0.000 min
 Response: 1973173
 Conc: 197.01 ng/ml

Instrument :
 ECD_O
 ClientSampled :
 72-12018DL



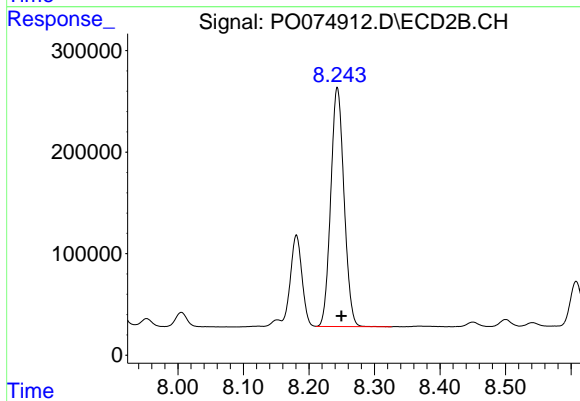
#38 AR-1262-3

R.T.: 8.181 min
 Delta R.T.: -0.005 min
 Response: 1101245
 Conc: 278.49 ng/ml



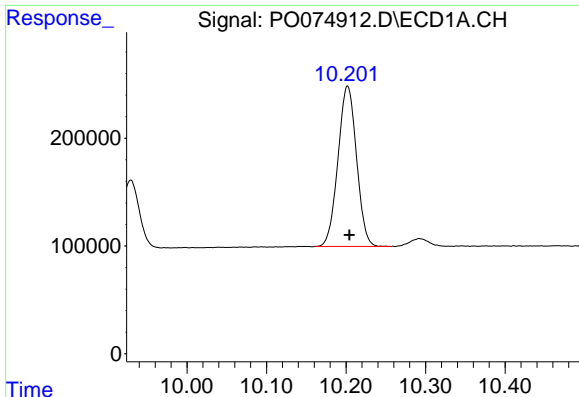
#39 AR-1262-4

R.T.: 9.521 min
 Delta R.T.: -0.017 min
 Response: 3287404
 Conc: 441.42 ng/ml



#39 AR-1262-4

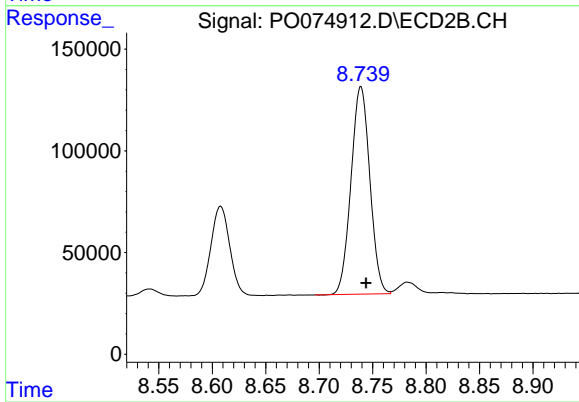
R.T.: 8.243 min
 Delta R.T.: -0.006 min
 Response: 3314711
 Conc: 500.32 ng/ml



#40 AR-1262-5

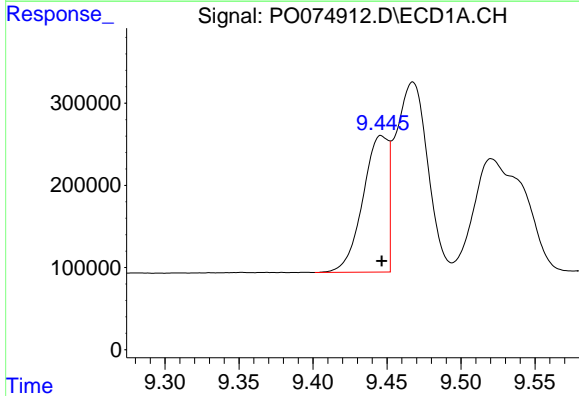
R.T.: 10.202 min
 Delta R.T.: -0.002 min
 Response: 2409275
 Conc: 460.52 ng/ml

Instrument :
 ECD_O
 ClientSampled :
 72-12018DL



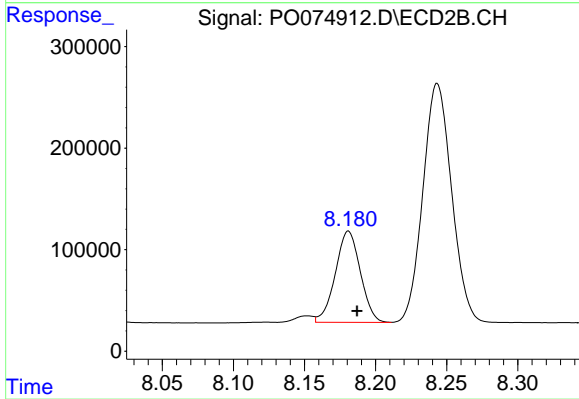
#40 AR-1262-5

R.T.: 8.739 min
 Delta R.T.: -0.005 min
 Response: 1250319
 Conc: 404.97 ng/ml



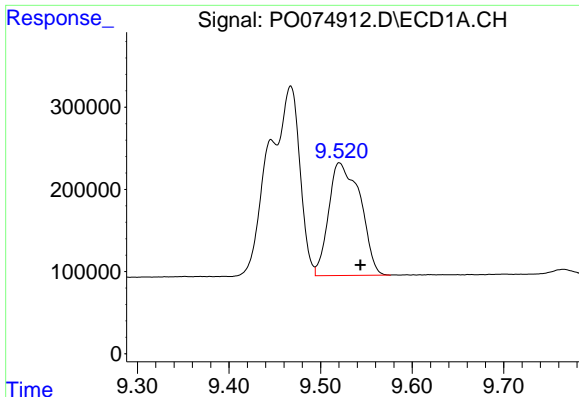
#41 AR-1268-1

R.T.: 9.446 min
 Delta R.T.: 0.000 min
 Response: 1973173
 Conc: 105.61 ng/ml



#41 AR-1268-1

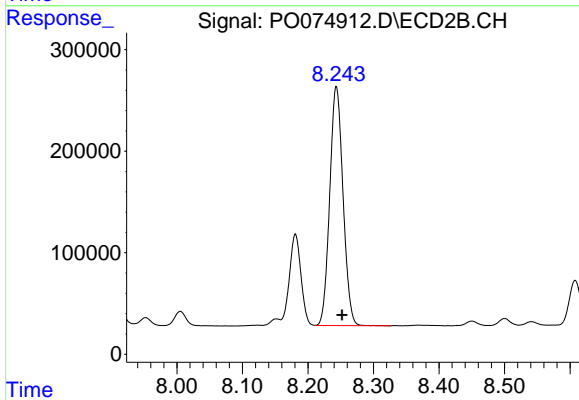
R.T.: 8.181 min
 Delta R.T.: -0.006 min
 Response: 1101245
 Conc: 98.37 ng/ml



#42 AR-1268-2

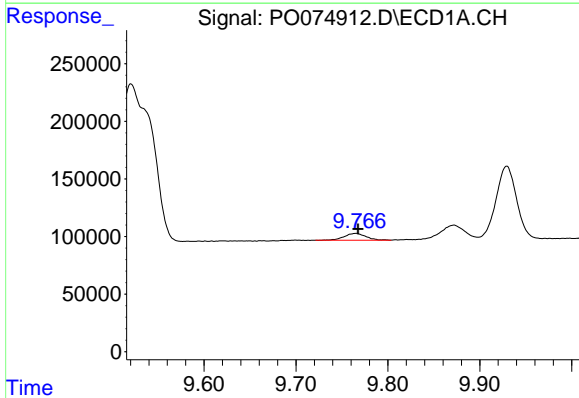
R.T.: 9.521 min
 Delta R.T.: -0.023 min
 Response: 3287404
 Conc: 206.04 ng/ml

Instrument :
 ECD_O
 ClientSampled :
 72-12018DL



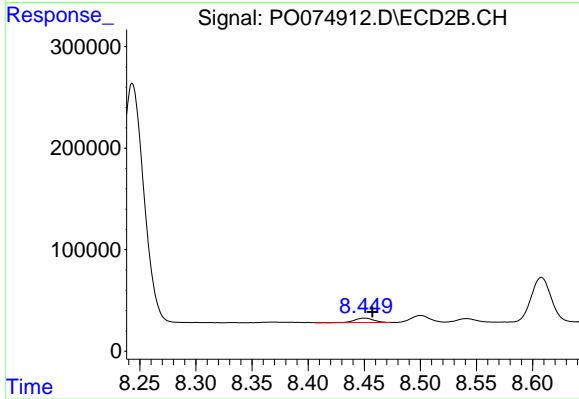
#42 AR-1268-2

R.T.: 8.243 min
 Delta R.T.: -0.009 min
 Response: 3314711
 Conc: 346.47 ng/ml



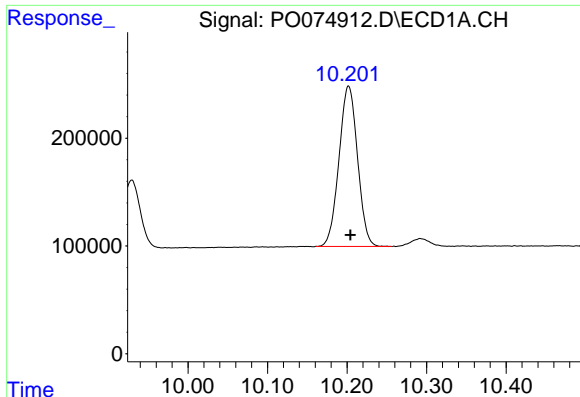
#43 AR-1268-3

R.T.: 9.766 min
 Delta R.T.: -0.002 min
 Response: 96988
 Conc: 6.83 ng/ml



#43 AR-1268-3

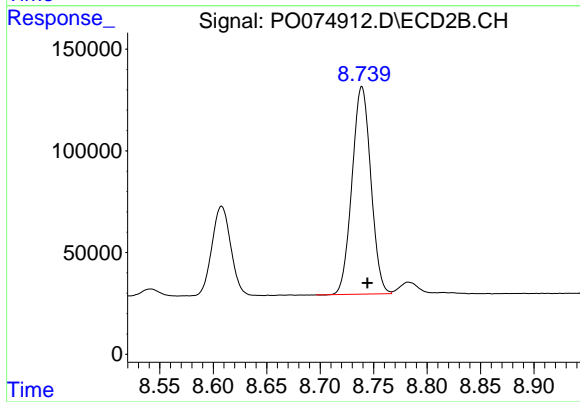
R.T.: 8.450 min
 Delta R.T.: -0.007 min
 Response: 51357
 Conc: 6.18 ng/ml



#44 AR-1268-4

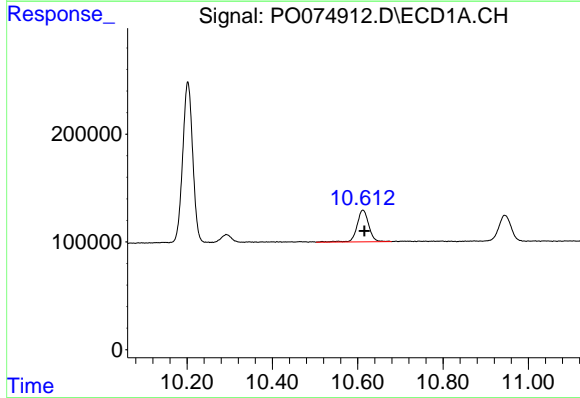
R.T.: 10.202 min
 Delta R.T.: -0.002 min
 Response: 2409275
 Conc: 411.24 ng/ml

Instrument :
 ECD_O
 ClientSampled :
 72-12018DL



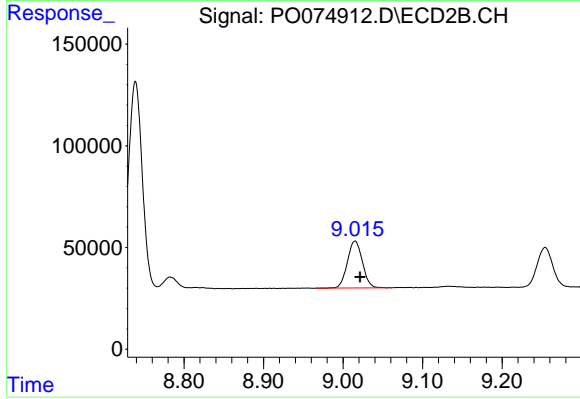
#44 AR-1268-4

R.T.: 8.739 min
 Delta R.T.: -0.005 min
 Response: 1250319
 Conc: 360.41 ng/ml



#45 AR-1268-5

R.T.: 10.612 min
 Delta R.T.: -0.003 min
 Response: 561420
 Conc: 13.43 ng/ml



#45 AR-1268-5

R.T.: 9.015 min
 Delta R.T.: -0.006 min
 Response: 303545
 Conc: 12.82 ng/ml