

Data Path : Z:\pestpcbsrv\HPCHEM1\ECD_0\Data\P0011821\
 Data File : P0074916.D
 Signal(s) : Signal #1: ECD1A.CH Signal #2: ECD2B.CH
 Acq On : 19 Jan 2021 4:09
 Operator : AJ/MA
 Sample : M1104-13 5X
 Misc :
 ALS Vial : 54 Sample Multiplier: 1

Instrument :
 ECD_0
 ClientSampleId :
 S3-04-C

Integration File signal 1: autoint1.e
 Integration File signal 2: autoint2.e
 Quant Time: Jan 19 04:59:19 2021
 Quant Method : Z:\pestpcbsrv\HPCHEM1\ECD_0\methods\P0011121.M
 Quant Title : GC EXTRACTABLES
 QLast Update : Tue Jan 12 06:02:45 2021
 Response via : Initial Calibration
 Integrator: ChemStation 6890 Scale Mode: Small noise peaks clipped

Volume Inj. : 2 µl
 Signal #1 Phase : ZB-MR2 Signal #2 Phase: ZB-MR2
 Signal #1 Info : 30Mx0.32mmx 0.50µ Signal #2 Info : 30M x 0.32mm x 0.25µm

Compound	RT#1	RT#2	Resp#1	Resp#2	ng/ml	ng/ml

System Monitoring Compounds						
1) SA Tetrachlo...	4.928	4.001	437950	242566	4.150	4.312
2) SA Decachlor...	10.943	9.253	1006369	530564	9.916	9.663
Target Compounds						
26) L6 AR-1254-1	7.164	6.110	86574	77713	19.684	21.515
27) L6 AR-1254-2	7.393	6.269	222496	101407	32.668	32.538
28) L6 AR-1254-3	7.777	6.685	262936	201192	37.486	41.027
29) L6 AR-1254-4	8.073	6.923	219056	116876	36.120	33.703
30) L6 AR-1254-5	8.502	7.349	441927	288694	76.077	63.786
41) L9 AR-1268-1	9.442	8.180	2892561	1546074	154.819	138.107
42) L9 AR-1268-2	9.539	8.245	2038557	1195209	127.770	124.928
43) L9 AR-1268-3	9.764	8.450	1891612	1010714	133.193	121.643
44) L9 AR-1268-4	10.201	8.738	598754	343543	102.202	99.028
45) L9 AR-1268-5	10.611	9.014	5308850	2691780	127.042	113.679

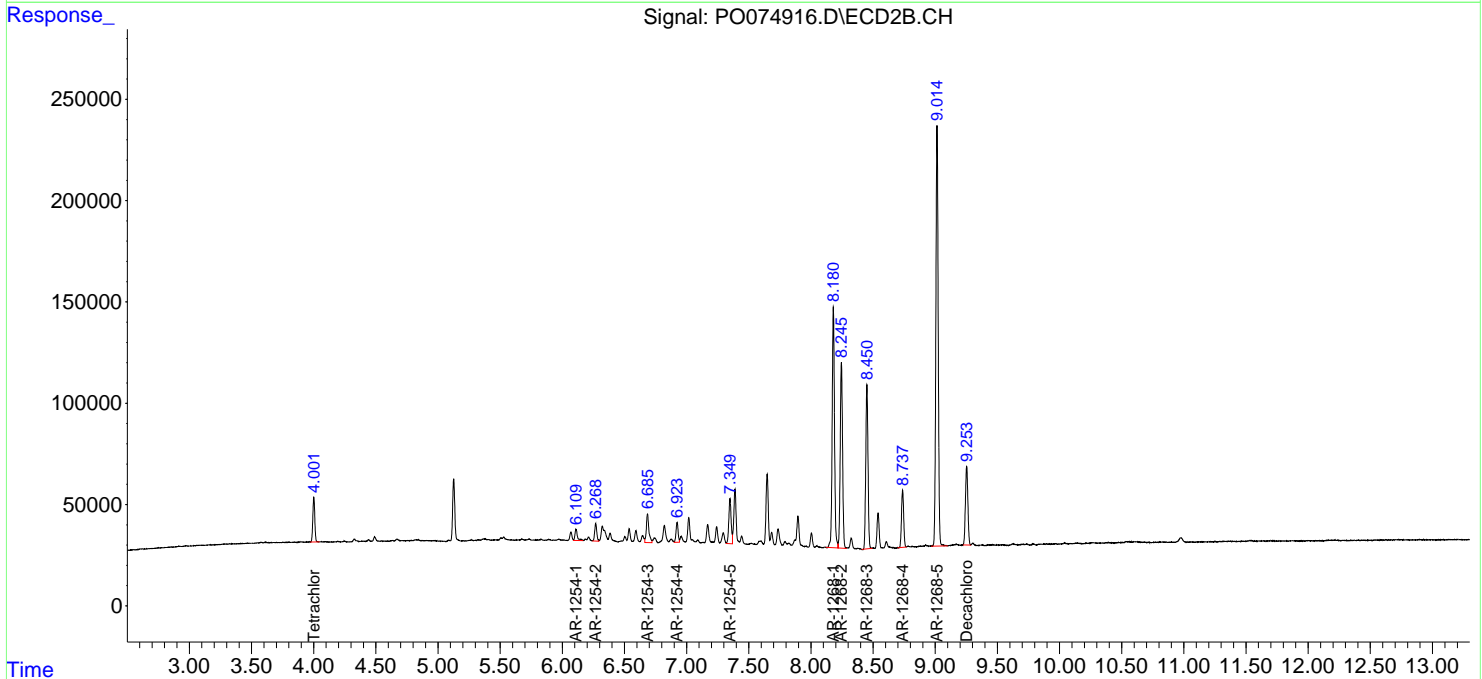
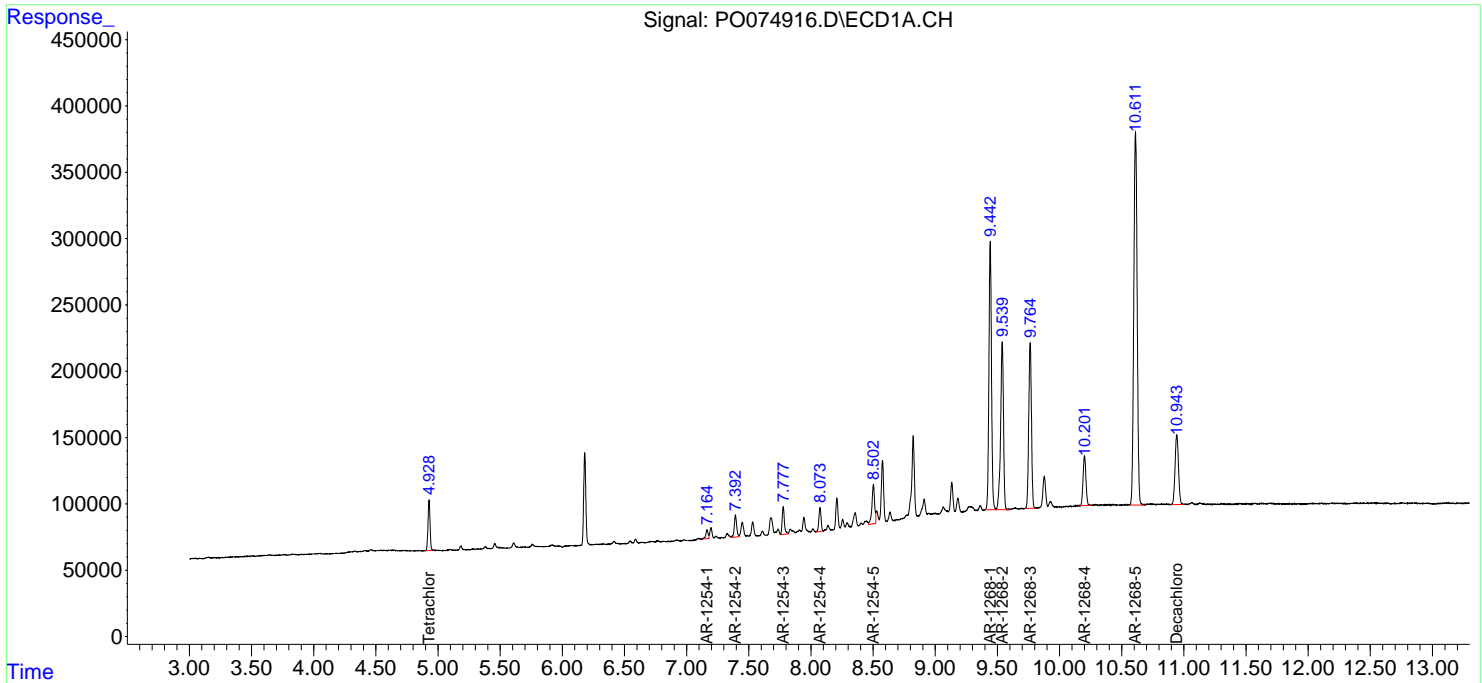
(f)=RT Delta > 1/2 Window (#)=Amounts differ by > 25% (m)=manual int.

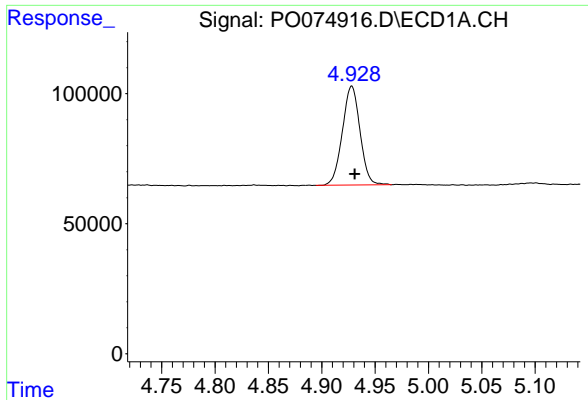
Data Path : Z:\pestpcbsrv\HPCHEM1\ECD_0\Data\P0011821\
 Data File : P0074916.D
 Signal(s) : Signal #1: ECD1A.CH Signal #2: ECD2B.CH
 Acq On : 19 Jan 2021 4:09
 Operator : AJ/MA
 Sample : M1104-13 5X
 Misc :
 ALS Vial : 54 Sample Multiplier: 1

Instrument :
 ECD_O
 ClientSampled :
 S3-04-C

Integration File signal 1: autoint1.e
 Integration File signal 2: autoint2.e
 Quant Time: Jan 19 04:59:19 2021
 Quant Method : Z:\pestpcbsrv\HPCHEM1\ECD_0\methods\P0011121.M
 Quant Title : GC EXTRACTABLES
 QLast Update : Tue Jan 12 06:02:45 2021
 Response via : Initial Calibration
 Integrator: ChemStation 6890 Scale Mode: Small noise peaks clipped

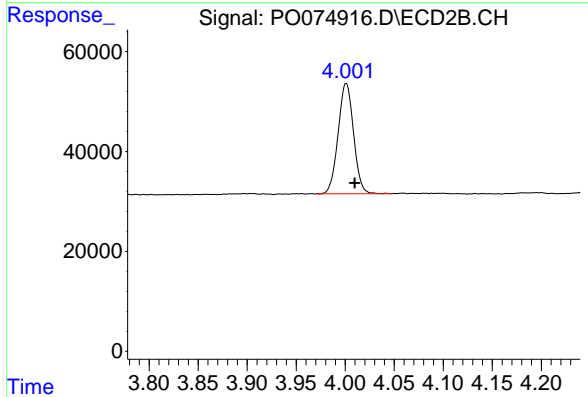
Volume Inj. : 2 µl
 Signal #1 Phase : ZB-MR1 Signal #2 Phase: ZB-MR2
 Signal #1 Info : 30Mx0.32mmx 0.50µ Signal #2 Info : 30M x 0.32mm x 0.25µm



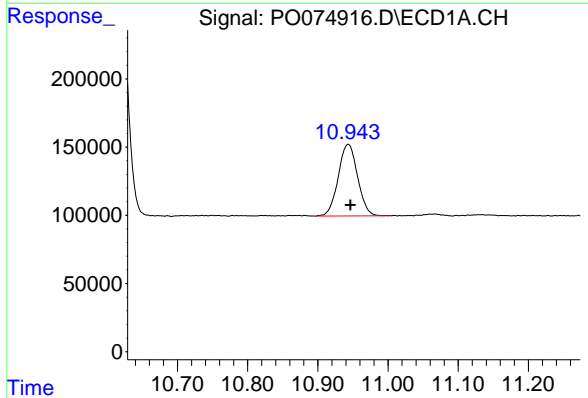


#1 Tetrachloro-m-xylene
R.T.: 4.928 min
Delta R.T.: -0.003 min
Response: 437950
Conc: 4.15 ng/ml

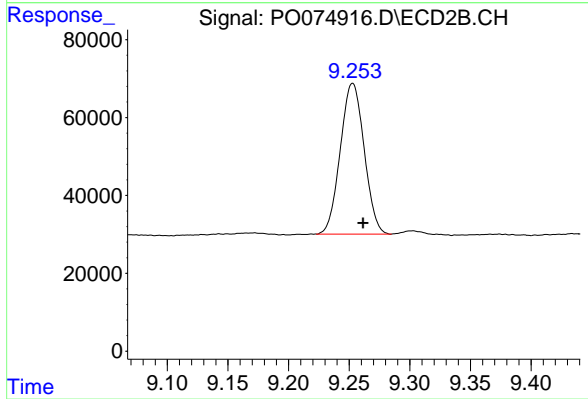
Instrument :
ECD_O
ClientSampled :
S3-04-C



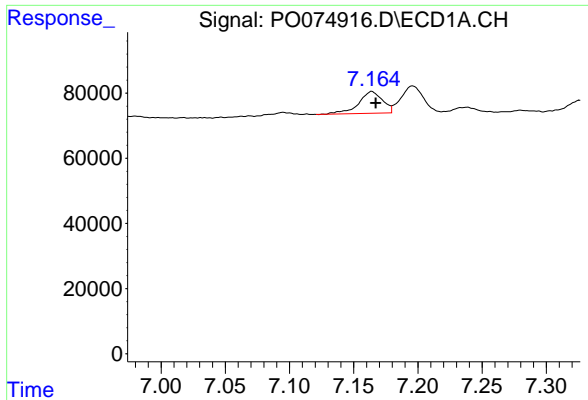
#1 Tetrachloro-m-xylene
R.T.: 4.001 min
Delta R.T.: -0.009 min
Response: 242566
Conc: 4.31 ng/ml



#2 Decachlorobiphenyl
R.T.: 10.943 min
Delta R.T.: -0.003 min
Response: 1006369
Conc: 9.92 ng/ml



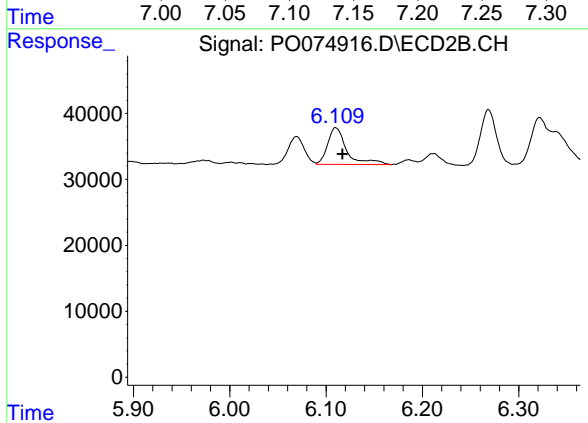
#2 Decachlorobiphenyl
R.T.: 9.253 min
Delta R.T.: -0.009 min
Response: 530564
Conc: 9.66 ng/ml



#26 AR-1254-1

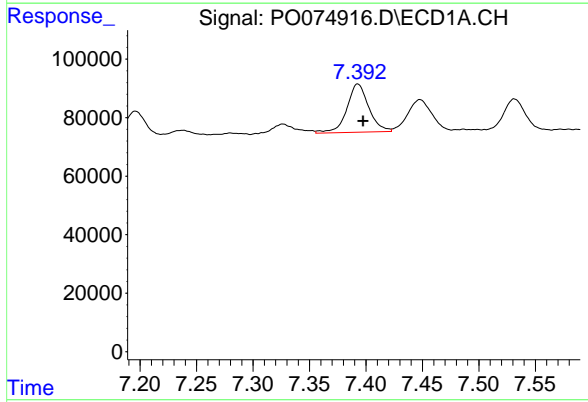
R.T.: 7.164 min
 Delta R.T.: -0.003 min
 Response: 86574
 Conc: 19.68 ng/ml

Instrument :
 ECD_O
 ClientSampleId :
 S3-04-C



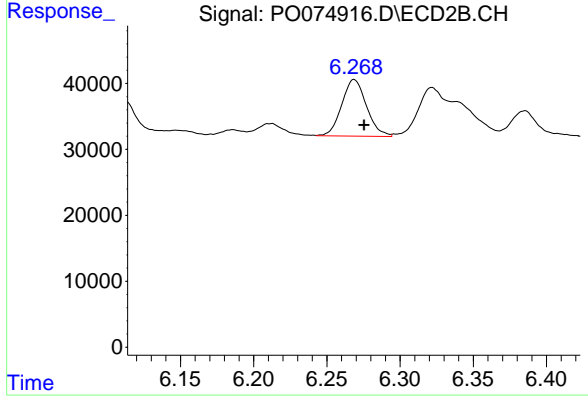
#26 AR-1254-1

R.T.: 6.110 min
 Delta R.T.: -0.007 min
 Response: 77713
 Conc: 21.52 ng/ml



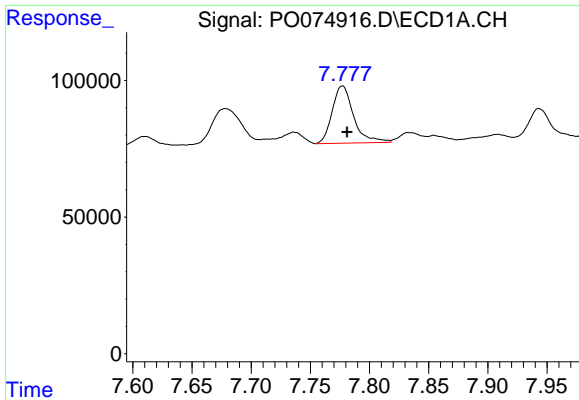
#27 AR-1254-2

R.T.: 7.393 min
 Delta R.T.: -0.005 min
 Response: 222496
 Conc: 32.67 ng/ml



#27 AR-1254-2

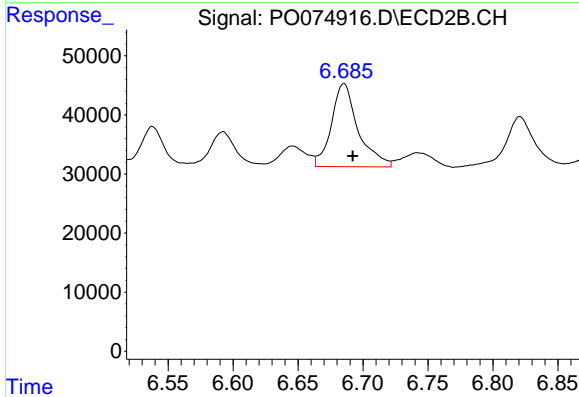
R.T.: 6.269 min
 Delta R.T.: -0.007 min
 Response: 101407
 Conc: 32.54 ng/ml



#28 AR-1254-3

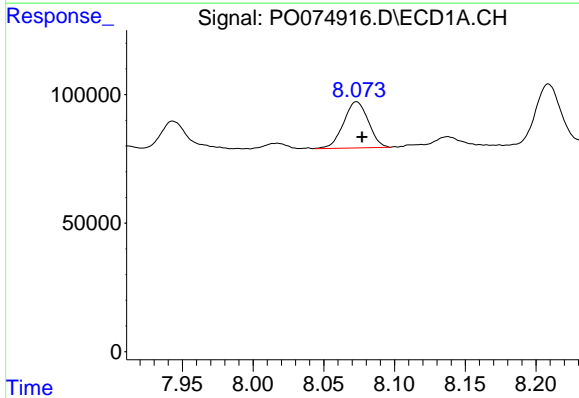
R.T.: 7.777 min
 Delta R.T.: -0.004 min
 Response: 262936
 Conc: 37.49 ng/ml

Instrument :
 ECD_O
 ClientSampleId :
 S3-04-C



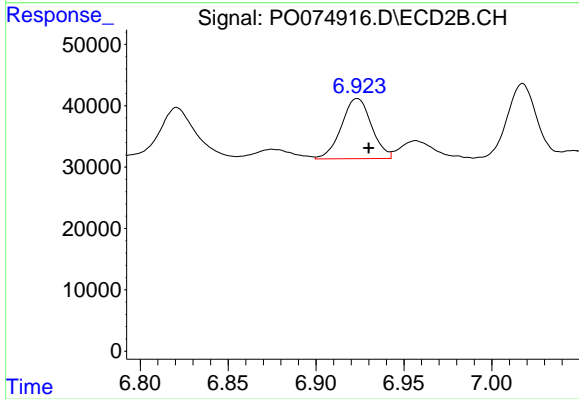
#28 AR-1254-3

R.T.: 6.685 min
 Delta R.T.: -0.007 min
 Response: 201192
 Conc: 41.03 ng/ml



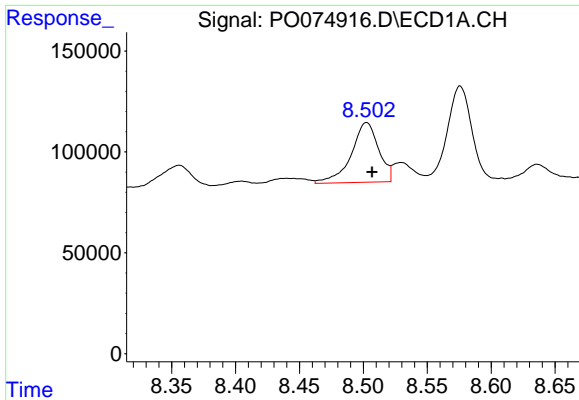
#29 AR-1254-4

R.T.: 8.073 min
 Delta R.T.: -0.004 min
 Response: 219056
 Conc: 36.12 ng/ml



#29 AR-1254-4

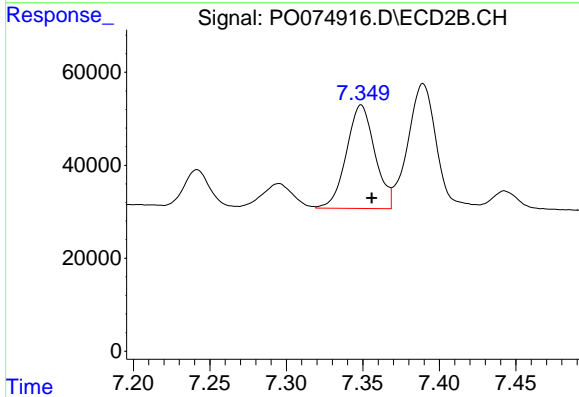
R.T.: 6.923 min
 Delta R.T.: -0.007 min
 Response: 116876
 Conc: 33.70 ng/ml



#30 AR-1254-5

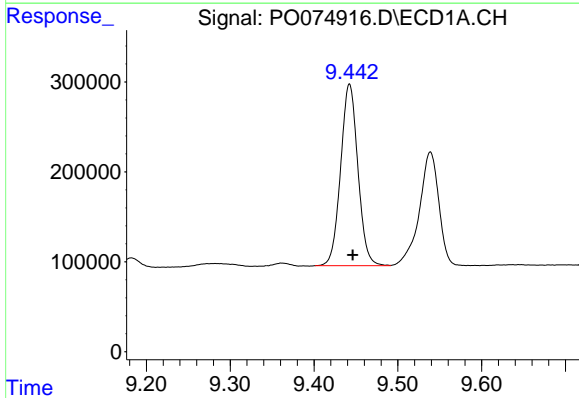
R.T.: 8.502 min
 Delta R.T.: -0.004 min
 Response: 441927
 Conc: 76.08 ng/ml

Instrument :
 ECD_O
 ClientSampled :
 S3-04-C



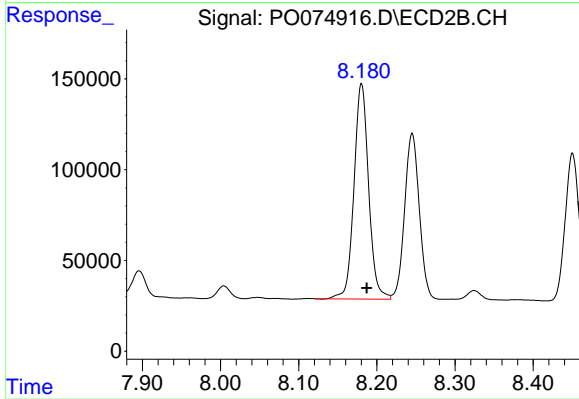
#30 AR-1254-5

R.T.: 7.349 min
 Delta R.T.: -0.007 min
 Response: 288694
 Conc: 63.79 ng/ml



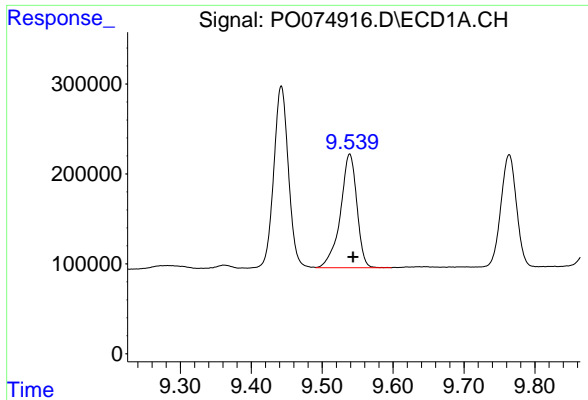
#41 AR-1268-1

R.T.: 9.442 min
 Delta R.T.: -0.004 min
 Response: 2892561
 Conc: 154.82 ng/ml



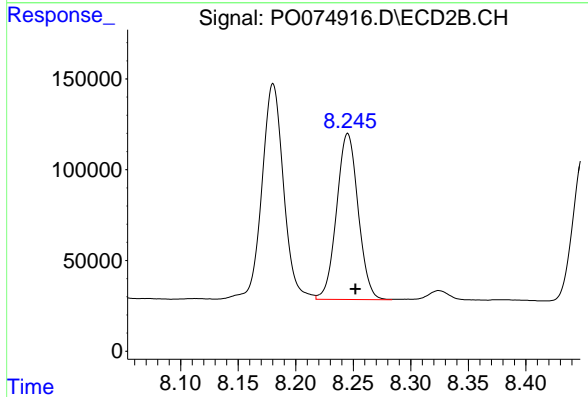
#41 AR-1268-1

R.T.: 8.180 min
 Delta R.T.: -0.007 min
 Response: 1546074
 Conc: 138.11 ng/ml

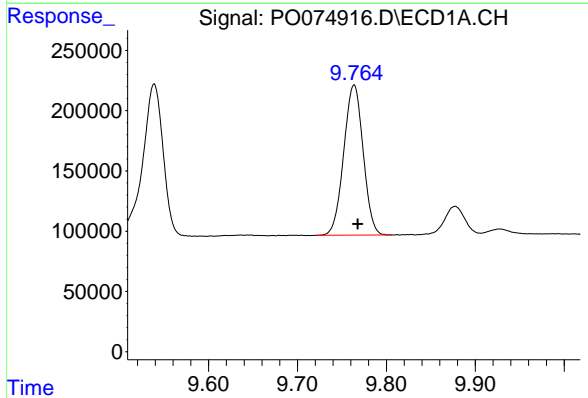


#42 AR-1268-2
 R.T.: 9.539 min
 Delta R.T.: -0.004 min
 Response: 2038557
 Conc: 127.77 ng/ml

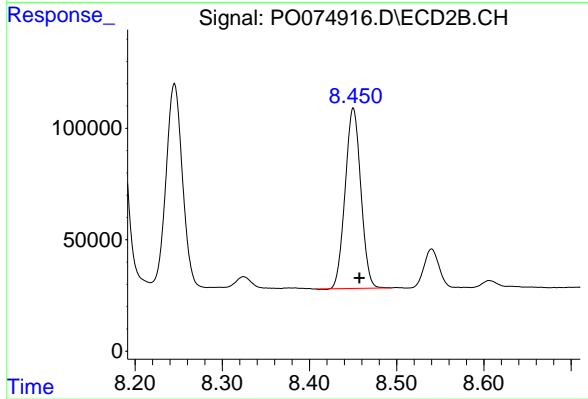
Instrument :
 ECD_O
 ClientSampled :
 S3-04-C



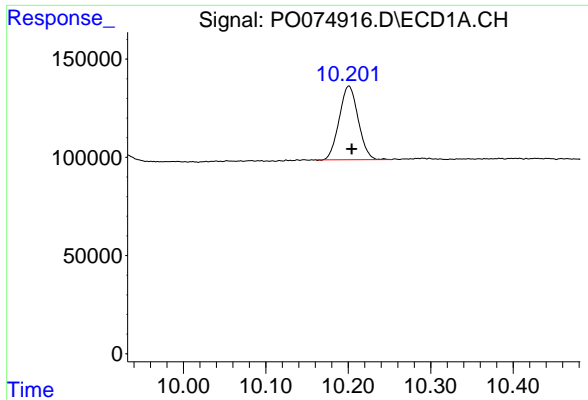
#42 AR-1268-2
 R.T.: 8.245 min
 Delta R.T.: -0.007 min
 Response: 1195209
 Conc: 124.93 ng/ml



#43 AR-1268-3
 R.T.: 9.764 min
 Delta R.T.: -0.004 min
 Response: 1891612
 Conc: 133.19 ng/ml

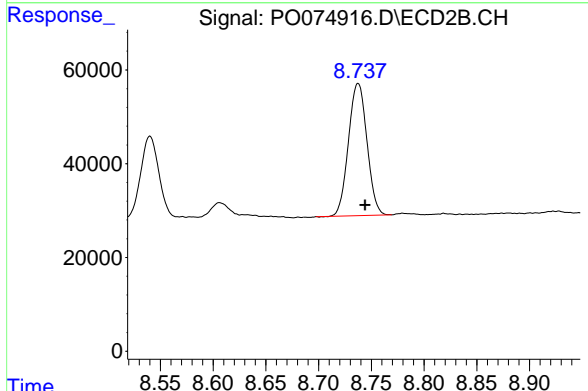


#43 AR-1268-3
 R.T.: 8.450 min
 Delta R.T.: -0.007 min
 Response: 1010714
 Conc: 121.64 ng/ml

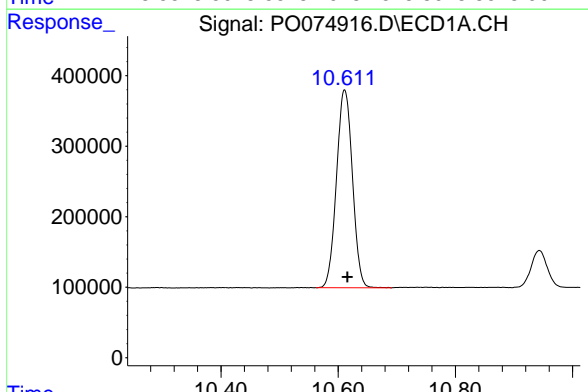


#44 AR-1268-4
 R.T.: 10.201 min
 Delta R.T.: -0.004 min
 Response: 598754
 Conc: 102.20 ng/ml

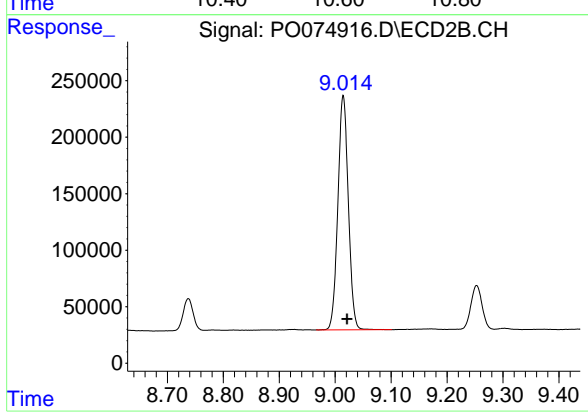
Instrument :
 ECD_O
ClientSampled :
 S3-04-C



#44 AR-1268-4
 R.T.: 8.738 min
 Delta R.T.: -0.007 min
 Response: 343543
 Conc: 99.03 ng/ml



#45 AR-1268-5
 R.T.: 10.611 min
 Delta R.T.: -0.005 min
 Response: 5308850
 Conc: 127.04 ng/ml



#45 AR-1268-5
 R.T.: 9.014 min
 Delta R.T.: -0.007 min
 Response: 2691780
 Conc: 113.68 ng/ml