

Data Path : Z:\pestpcbsrv\HPCHEM1\ECD_0\Data\P0011823\
 Data File : P0092155.D
 Signal(s) : Signal #1: ECD1A.ch Signal #2: ECD2B.ch
 Acq On : 19 Jan 2023 00:44
 Operator : YP/AJ
 Sample : 01174-08 10X
 Misc :
 ALS Vial : 32 Sample Multiplier: 1

Instrument :
 ECD_0
 ClientSampleId :
 IRV-2023-4B

Integration File signal 1: autoint1.e
 Integration File signal 2: autoint2.e
 Quant Time: Jan 19 03:37:13 2023
 Quant Method : Z:\pestpcbsrv\HPCHEM1\ECD_0\methods\P0011023.M
 Quant Title : GC EXTRACTABLES
 QLast Update : Wed Jan 11 04:41:00 2023
 Response via : Initial Calibration
 Integrator: ChemStation

Volume Inj. : 2 µl
 Signal #1 Phase : ZB-MR1 Signal #2 Phase: ZB-MR2
 Signal #1 Info : 30Mx0.32mmx 0.50µ Signal #2 Info : 30M x 0.32mm x 0.25µm

Compound	RT#1	RT#2	Resp#1	Resp#2	ng/ml	ng/ml

System Monitoring Compounds						
1) SA Tetrachlo...	4.447	3.645	4195529	2041760	1.504	1.471
2) SA Decachlor...	10.364	8.694	4398613	2218102	2.247	2.502

Target Compounds

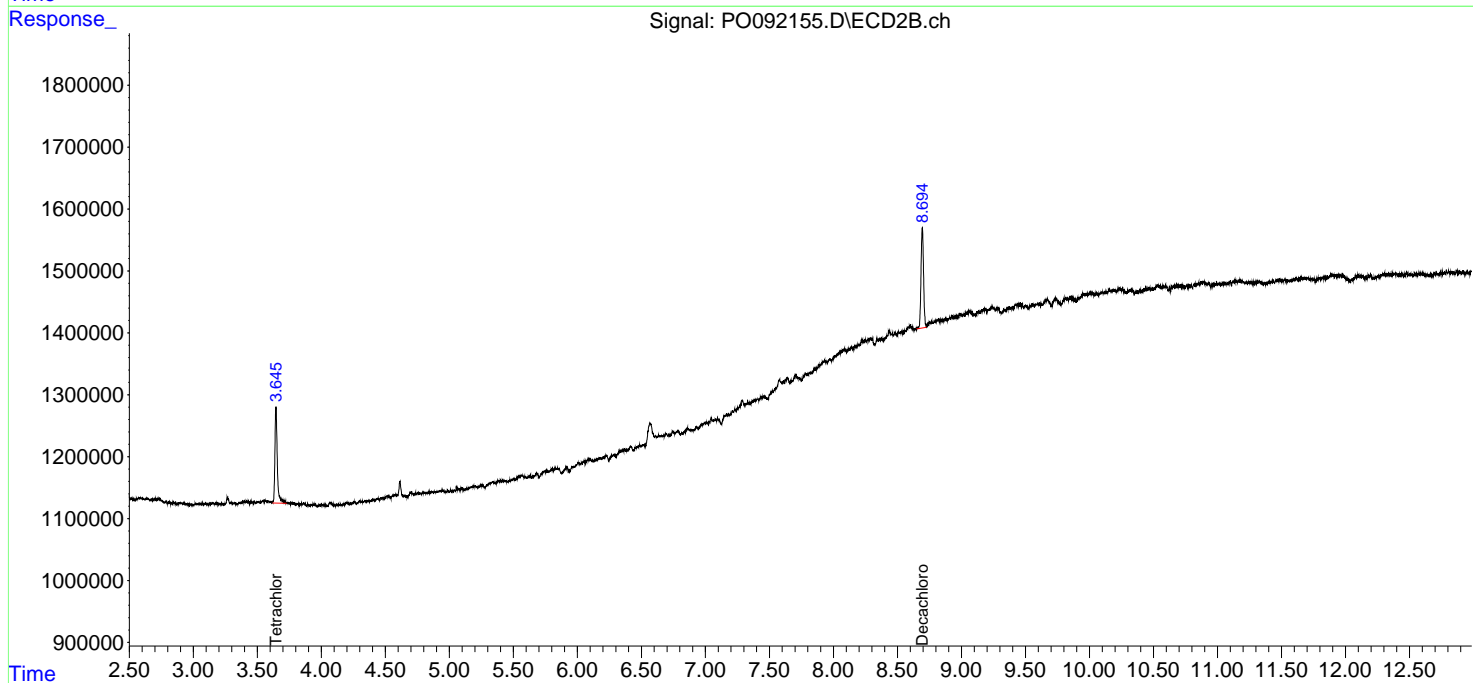
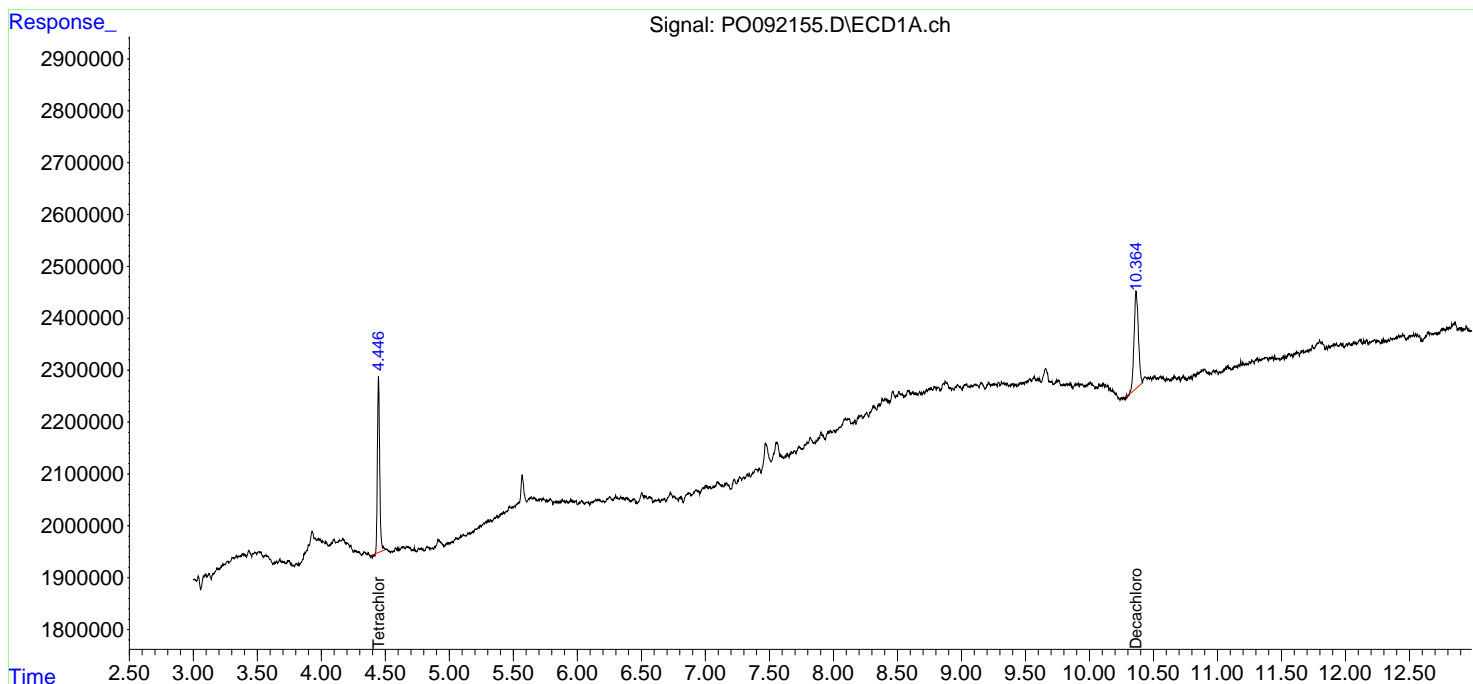
 (f)=RT Delta > 1/2 Window (#)=Amounts differ by > 25% (m)=manual int.

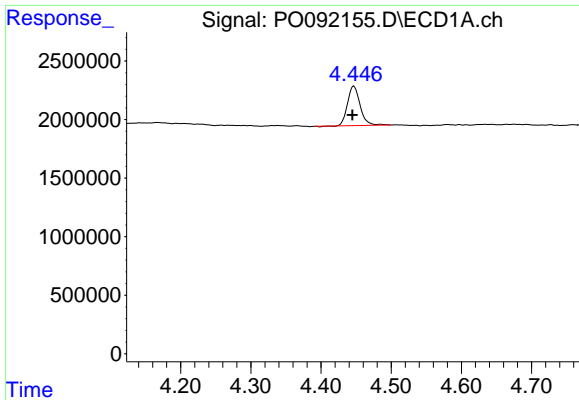
Data Path : Z:\pestpcbsrv\HPCHEM1\ECD_O\Data\P0011823\
 Data File : P0092155.D
 Signal(s) : Signal #1: ECD1A.ch Signal #2: ECD2B.ch
 Acq On : 19 Jan 2023 00:44
 Operator : YP/AJ
 Sample : 01174-08 10X
 Misc :
 ALS Vial : 32 Sample Multiplier: 1

Instrument :
 ECD_O
 ClientSampleId :
 IRV-2023-4B

Integration File signal 1: autoint1.e
 Integration File signal 2: autoint2.e
 Quant Time: Jan 19 03:37:13 2023
 Quant Method : Z:\pestpcbsrv\HPCHEM1\ECD_O\methods\P0011023.M
 Quant Title : GC EXTRACTABLES
 QLast Update : Wed Jan 11 04:41:00 2023
 Response via : Initial Calibration
 Integrator: ChemStation

Volume Inj. : 2 µl
 Signal #1 Phase : ZB-MR1 Signal #2 Phase: ZB-MR2
 Signal #1 Info : 30Mx0.32mmx 0.50µ Signal #2 Info : 30M x 0.32mm x 0.25µm

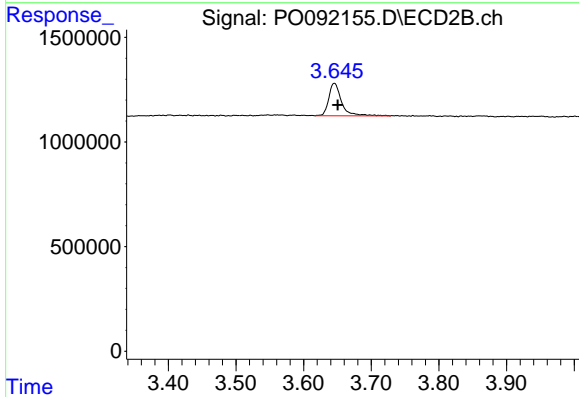




#1 Tetrachloro-m-xylene

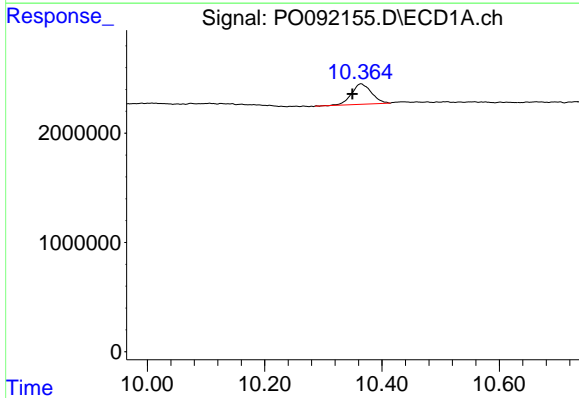
R.T.: 4.447 min
 Delta R.T.: 0.002 min
 Response: 4195529
 Conc: 1.50 ng/ml

Instrument :
 ECD_O
 ClientSampleId :
 IRV-2023-4B



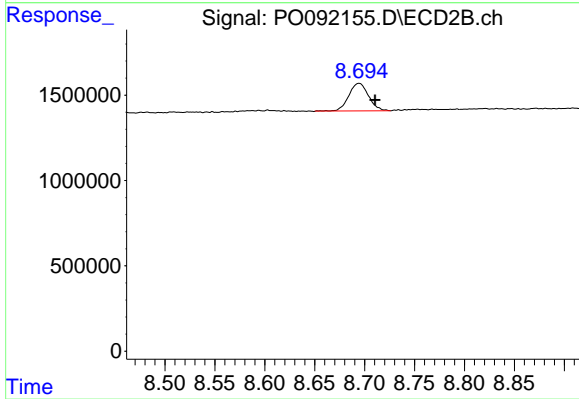
#1 Tetrachloro-m-xylene

R.T.: 3.645 min
 Delta R.T.: -0.005 min
 Response: 2041760
 Conc: 1.47 ng/ml



#2 Decachlorobiphenyl

R.T.: 10.364 min
 Delta R.T.: 0.015 min
 Response: 4398613
 Conc: 2.25 ng/ml



#2 Decachlorobiphenyl

R.T.: 8.694 min
 Delta R.T.: -0.016 min
 Response: 2218102
 Conc: 2.50 ng/ml