

Data Path : Z:\pestpcbsrv\HPCHEM1\ECD_0\Data\P0011921\
 Data File : P0074926.D
 Signal(s) : Signal #1: ECD1A.CH Signal #2: ECD2B.CH
 Acq On : 19 Jan 2021 9:35
 Operator : AJ/MA
 Sample : M1082-03
 Misc :
 ALS Vial : 5 Sample Multiplier: 1

Instrument :
 ECD_0
ClientSampleId :
 BACKFILL-ASHCROFT-02

Integration File signal 1: autoint1.e
 Integration File signal 2: autoint2.e
 Quant Time: Jan 20 03:38:30 2021
 Quant Method : Z:\pestpcbsrv\HPCHEM1\ECD_0\methods\P0011121.M
 Quant Title : GC EXTRACTABLES
 QLast Update : Tue Jan 12 06:02:45 2021
 Response via : Initial Calibration
 Integrator: ChemStation 6890 Scale Mode: Small noise peaks clipped

Volume Inj. : 2 µl
 Signal #1 Phase : ZB-MR1 Signal #2 Phase: ZB-MR2
 Signal #1 Info : 30Mx0.32mmx 0.50µ Signal #2 Info : 30M x 0.32mm x 0.25µm

Compound	RT#1	RT#2	Resp#1	Resp#2	ng/ml	ng/ml

System Monitoring Compounds						
1) SA Tetrachlo...	4.928	4.000	2462072	1249332	23.333	22.209
2) SA Decachlor...	10.942	9.253	2330849	1205692	22.966	21.960
Target Compounds						
8) L2 AR-1221-1	5.184	0.000	84257	0	68.596	N.D. #
9) L2 AR-1221-2	0.000	4.349	0	20578	N.D.	38.505 #
30) L6 AR-1254-5	8.505	0.000	41240	0	7.099	N.D. #
35) L7 AR-1260-5	0.000	7.892	0	31309	N.D.	3.939 #
37) L8 AR-1262-2	0.000	7.892	0	31309	N.D.	3.405 #
39) L8 AR-1262-4	9.514f	0.000	63413	0	8.515	N.D. #
42) L9 AR-1268-2	9.514f	0.000	63413	0	3.974	N.D. #

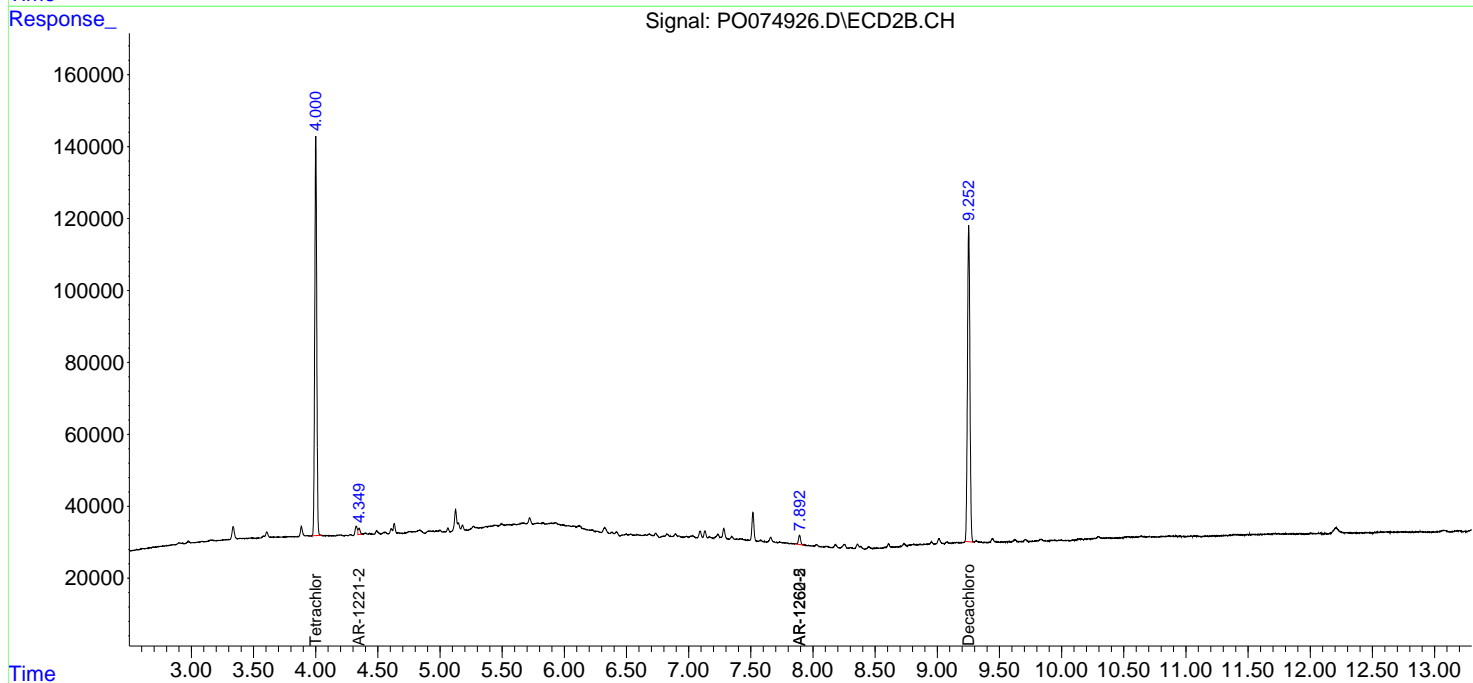
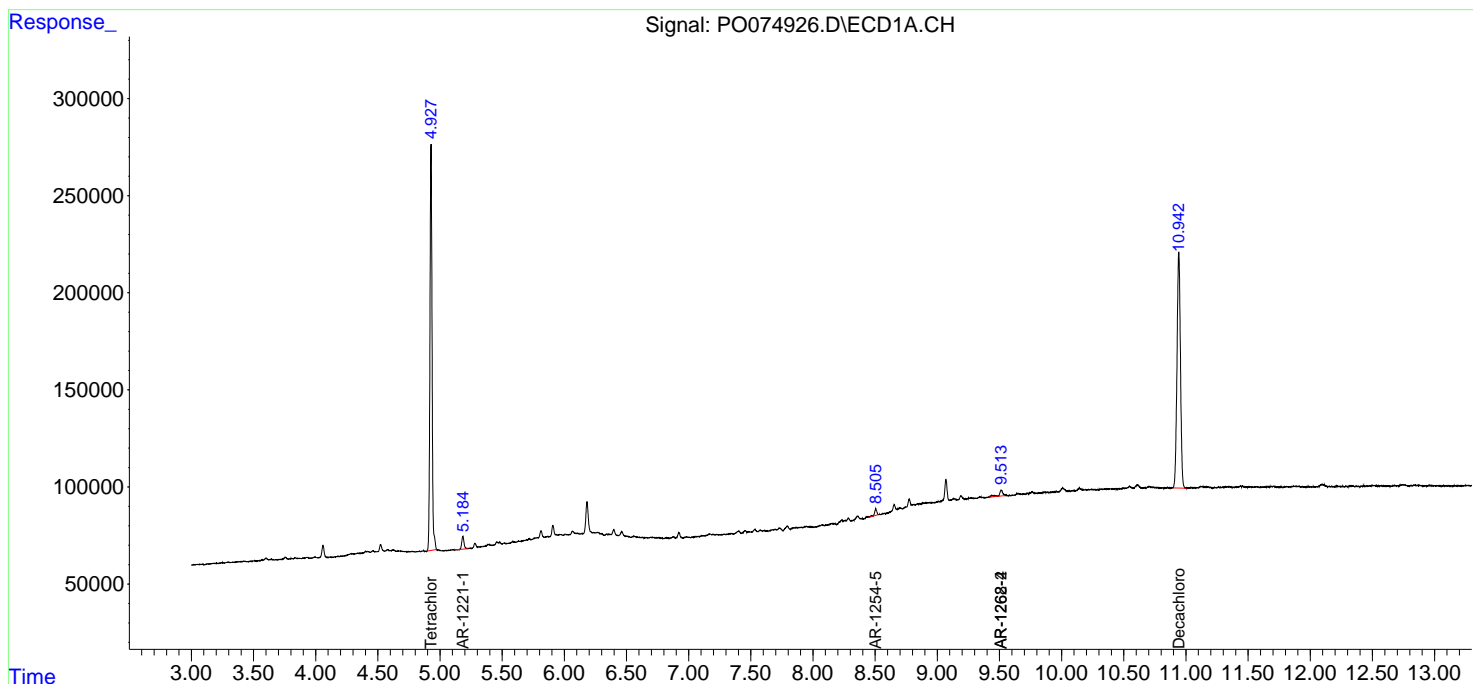
(f)=RT Delta > 1/2 Window (#)=Amounts differ by > 25% (m)=manual int.

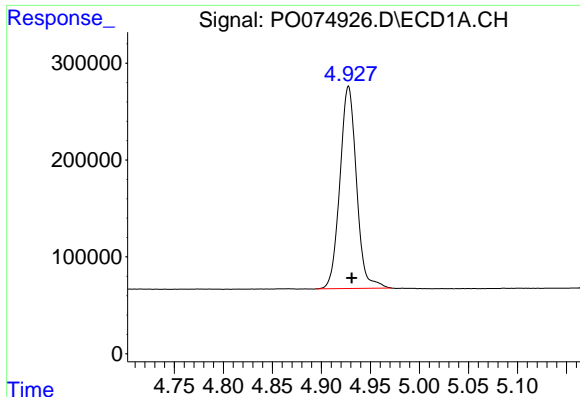
Data Path : Z:\pestpcbsrv\HPCHEM1\ECD_0\Data\P0011921\
 Data File : P0074926.D
 Signal(s) : Signal #1: ECD1A.CH Signal #2: ECD2B.CH
 Acq On : 19 Jan 2021 9:35
 Operator : AJ/MA
 Sample : M1082-03
 Misc :
 ALS Vial : 5 Sample Multiplier: 1

Instrument :
 ECD_0
 ClientSampled :
 BACKFILL-ASHCROFT-02

Integration File signal 1: autoint1.e
 Integration File signal 2: autoint2.e
 Quant Time: Jan 20 03:38:30 2021
 Quant Method : Z:\pestpcbsrv\HPCHEM1\ECD_0\methods\P0011121.M
 Quant Title : GC EXTRACTABLES
 QLast Update : Tue Jan 12 06:02:45 2021
 Response via : Initial Calibration
 Integrator: ChemStation 6890 Scale Mode: Small noise peaks clipped

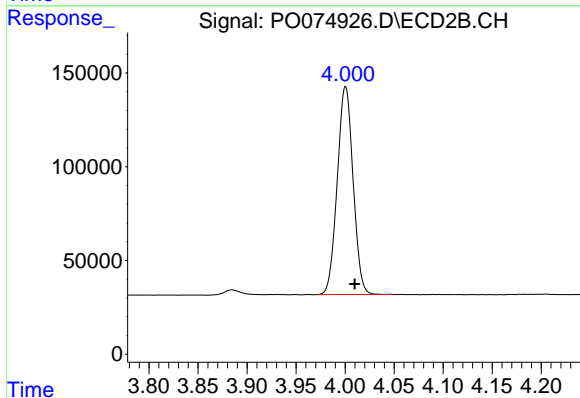
Volume Inj. : 2 µl
 Signal #1 Phase : ZB-MR1 Signal #2 Phase: ZB-MR2
 Signal #1 Info : 30Mx0.32mmx 0.50µ Signal #2 Info : 30M x 0.32mm x 0.25µm



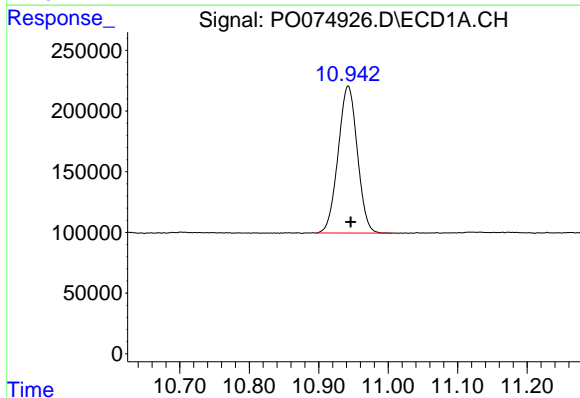


#1 Tetrachloro-m-xylene
 R.T.: 4.928 min
 Delta R.T.: -0.003 min
 Response: 2462072
 Conc: 23.33 ng/ml

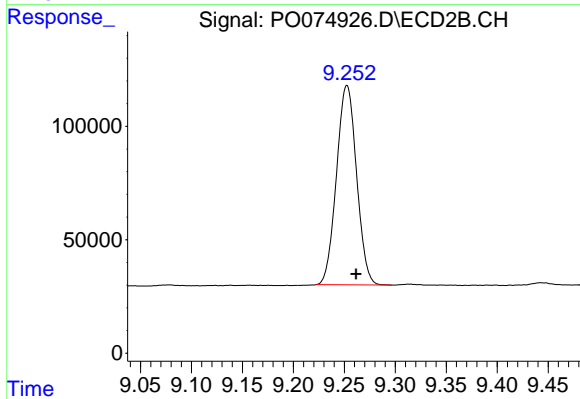
Instrument :
 ECD_O
 ClientSampleId :
 BACKFILL-ASHCROFT-02



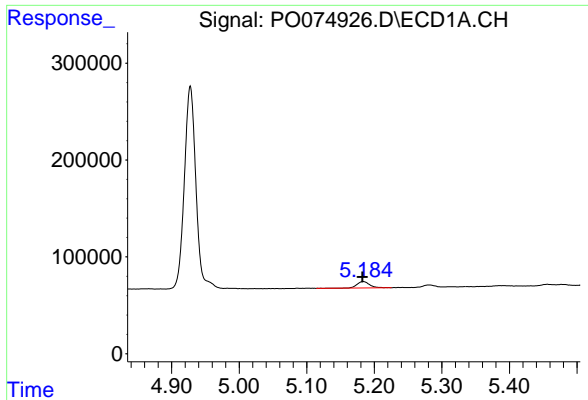
#1 Tetrachloro-m-xylene
 R.T.: 4.000 min
 Delta R.T.: -0.009 min
 Response: 1249332
 Conc: 22.21 ng/ml



#2 Decachlorobiphenyl
 R.T.: 10.942 min
 Delta R.T.: -0.004 min
 Response: 2330849
 Conc: 22.97 ng/ml

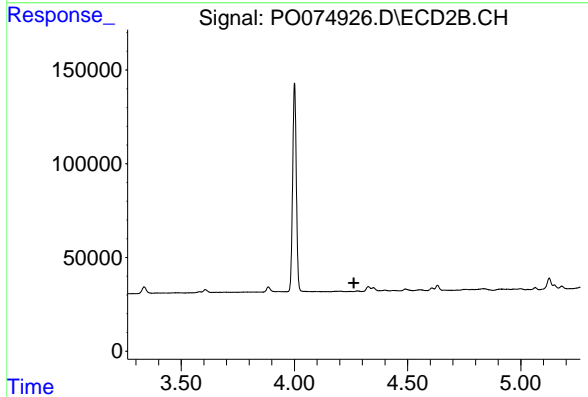


#2 Decachlorobiphenyl
 R.T.: 9.253 min
 Delta R.T.: -0.009 min
 Response: 1205692
 Conc: 21.96 ng/ml

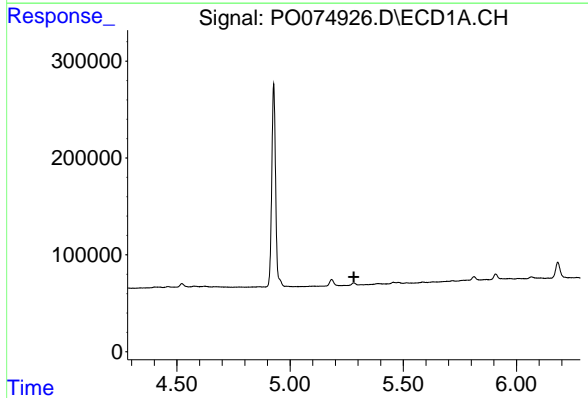


#8 AR-1221-1
 R.T.: 5.184 min
 Delta R.T.: 0.001 min
 Response: 84257
 Conc: 68.60 ng/ml

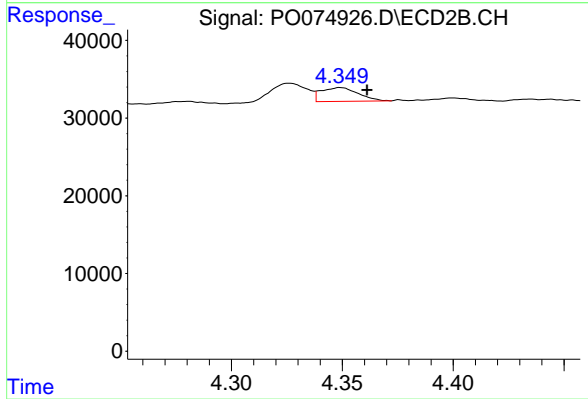
Instrument :
 ECD_O
 ClientSampleId :
 BACKFILL-ASHCROFT-02



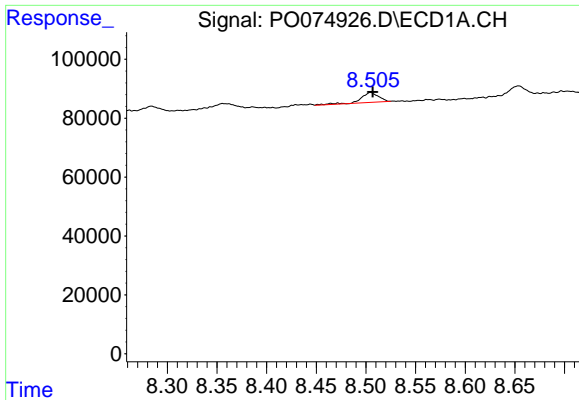
#8 AR-1221-1
 R.T.: 0.000 min
 Exp R.T. : 4.263 min
 Response: 0
 Conc: N.D.



#9 AR-1221-2
 R.T.: 0.000 min
 Exp R.T. : 5.282 min
 Response: 0
 Conc: N.D.



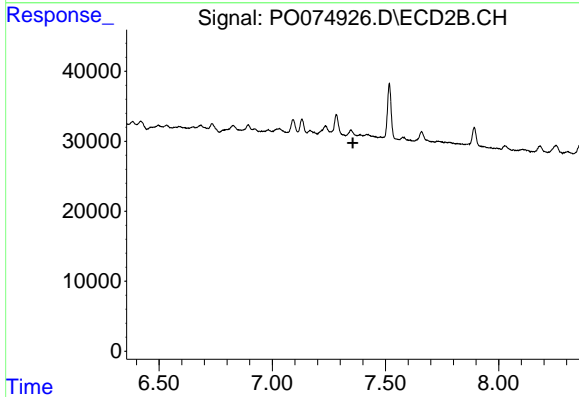
#9 AR-1221-2
 R.T.: 4.349 min
 Delta R.T.: -0.012 min
 Response: 20578
 Conc: 38.50 ng/ml



#30 AR-1254-5

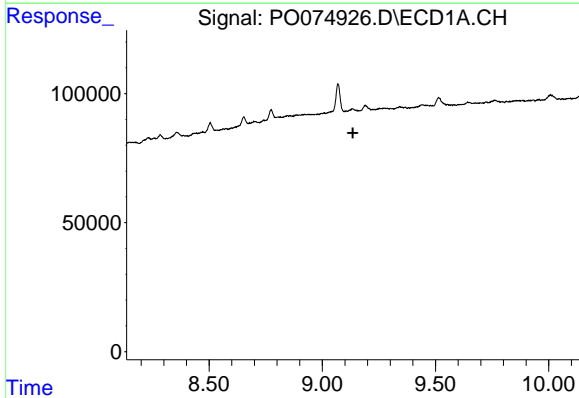
R.T.: 8.505 min
 Delta R.T.: -0.002 min
 Response: 41240
 Conc: 7.10 ng/ml

Instrument :
 ECD_O
 ClientSampleId :
 BACKFILL-ASHCROFT-02



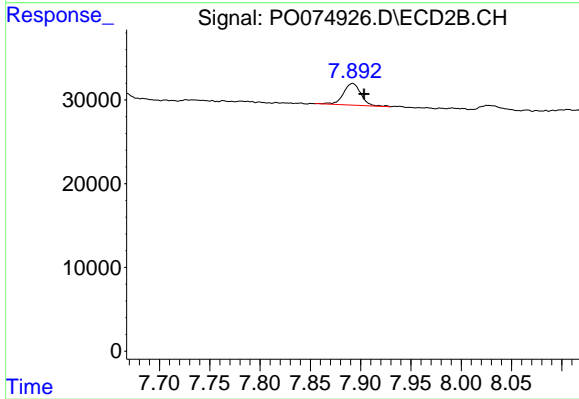
#30 AR-1254-5

R.T.: 0.000 min
 Exp R.T. : 7.356 min
 Response: 0
 Conc: N.D.



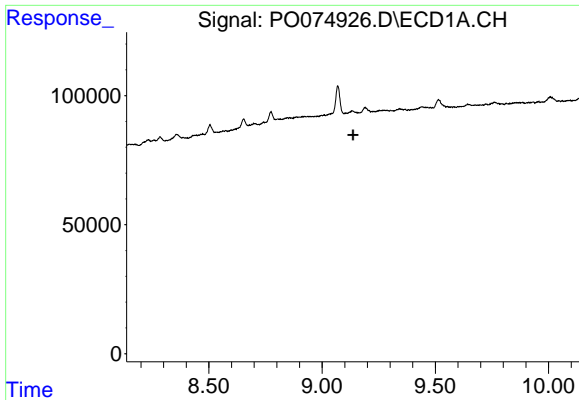
#35 AR-1260-5

R.T.: 0.000 min
 Exp R.T. : 9.135 min
 Response: 0
 Conc: N.D.



#35 AR-1260-5

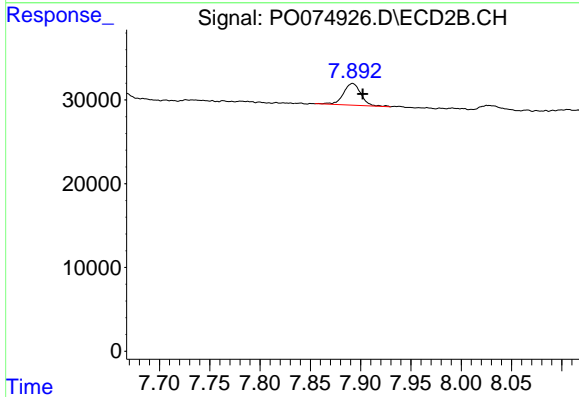
R.T.: 7.892 min
 Delta R.T.: -0.011 min
 Response: 31309
 Conc: 3.94 ng/ml



#37 AR-1262-2

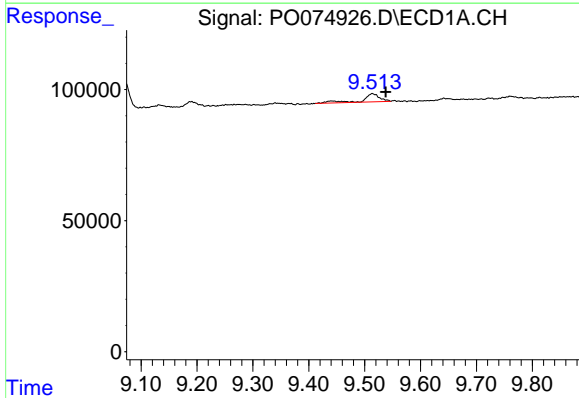
R.T.: 0.000 min
 Exp R.T.: 9.136 min
 Response: 0
 Conc: N.D.

Instrument :
 ECD_O
 ClientSampleId :
 BACKFILL-ASHCROFT-02



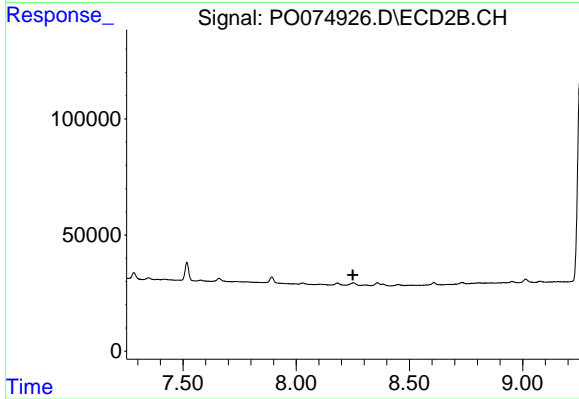
#37 AR-1262-2

R.T.: 7.892 min
 Delta R.T.: -0.010 min
 Response: 31309
 Conc: 3.41 ng/ml



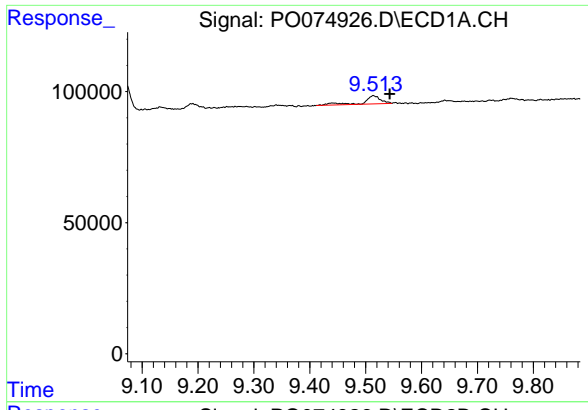
#39 AR-1262-4

R.T.: 9.514 min
 Delta R.T.: -0.024 min
 Response: 63413
 Conc: 8.51 ng/ml



#39 AR-1262-4

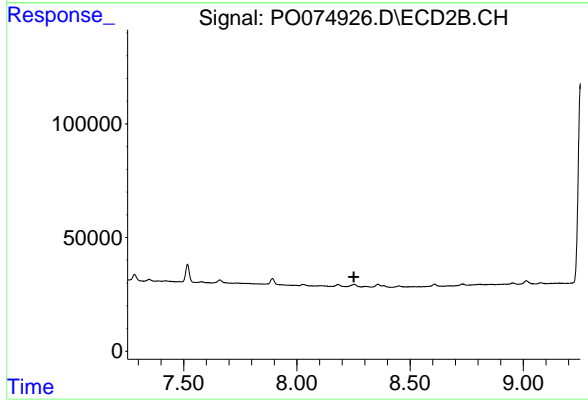
R.T.: 0.000 min
 Exp R.T.: 8.250 min
 Response: 0
 Conc: N.D.



#42 AR-1268-2

R.T.: 9.514 min
Delta R.T.: -0.030 min
Response: 63413
Conc: 3.97 ng/ml

Instrument :
ECD_O
ClientSampleId :
BACKFILL-ASHCROFT-02



#42 AR-1268-2

R.T.: 0.000 min
Exp R.T. : 8.252 min
Response: 0
Conc: N.D.