

Data Path : Z:\pestpcbsrv\HPCHEM1\ECD_0\Data\P0011921\
 Data File : P0074929.D
 Signal(s) : Signal #1: ECD1A.CH Signal #2: ECD2B.CH
 Acq On : 19 Jan 2021 10:27
 Operator : AJ/MA
 Sample : M1106-09
 Misc :
 ALS Vial : 7 Sample Multiplier: 1

Instrument :
 ECD_O
 ClientSampleId :

Integration File signal 1: autoint1.e
 Integration File signal 2: autoint2.e
 Quant Time: Jan 20 03:39:41 2021
 Quant Method : Z:\pestpcbsrv\HPCHEM1\ECD_0\methods\P0011121.M
 Quant Title : GC EXTRACTABLES
 QLast Update : Tue Jan 12 06:02:45 2021
 Response via : Initial Calibration
 Integrator: ChemStation 6890 Scale Mode: Small noise peaks clipped

Volume Inj. : 2 µl
 Signal #1 Phase : ZB-MR1 Signal #2 Phase: ZB-MR2
 Signal #1 Info : 30Mx0.32mmx 0.50µ Signal #2 Info : 30M x 0.32mm x 0.25µm

	Compound	RT#1	RT#2	Resp#1	Resp#2	ng/ml	ng/ml

System Monitoring Compounds							
1)	SA Tetrachlo...	4.927	4.000	2436085	1254448	23.087	22.300
2)	SA Decachlor...	10.943	9.252	3850390	1936179	37.938	35.264
Target Compounds							
6)	L1 AR-1016-4	0.000	5.506	0	59970	N.D.	42.670 #
7)	L1 AR-1016-5	6.765	5.733	50236	30575	18.368	17.780
8)	L2 AR-1221-1	5.182	0.000	230140	0	187.365	N.D. #
15)	L3 AR-1232-5	6.545	5.733	112104	30575	137.779	44.030 #
20)	L4 AR-1242-5	7.235	6.110	86177	322504	34.245	184.200 #
22)	L5 AR-1248-2	6.545	5.506	112104	59970	36.046	31.910
23)	L5 AR-1248-3	6.765	0.000	50236	0	13.872	N.D. #
24)	L5 AR-1248-4	7.195	5.733	216929	30575	48.644	13.574 #
25)	L5 AR-1248-5	7.235	6.153	86177	40952	20.449	17.419
26)	L6 AR-1254-1	7.163	6.110	420340	322504	95.572	89.287
27)	L6 AR-1254-2	7.393	6.268	818942	301668	120.242	96.796
28)	L6 AR-1254-3	7.777	6.684	1001222	647899	142.740	132.119
29)	L6 AR-1254-4	8.072	6.922	664171	351974	109.515	101.498
30)	L6 AR-1254-5	8.502	7.348	1061009	1042283	182.651	230.291 #
31)	L7 AR-1260-1	7.943	6.821	490346	364869	98.291	114.369
32)	L7 AR-1260-2	8.209	7.016	1216231	295393	178.802	69.487 #
33)	L7 AR-1260-3	8.575	7.168	1259996	313507	219.828	87.001 #
34)	L7 AR-1260-4	8.823	7.648	2697281	1147852	492.986	366.571 #
35)	L7 AR-1260-5	9.133	7.895	631790	381886	50.564	48.044
36)	L8 AR-1262-1	8.575	7.348	1259996	1042283	141.506	409.610 #
37)	L8 AR-1262-2	9.133	7.895	631790	381886	41.266	41.535
38)	L8 AR-1262-3	9.443	8.180	9050818	4395965	903.655	1111.687
39)	L8 AR-1262-4	9.538	8.245	5856962	3060571	786.450	461.958 #
40)	L8 AR-1262-5	10.201	8.737	1497212	804660	286.187	260.625
41)	L9 AR-1268-1	9.443	8.180	9050818	4395965	484.430	392.681
42)	L9 AR-1268-2	9.538	8.245	5856962	3060571	367.094	319.902
43)	L9 AR-1268-3	9.763	8.450	6599040	3278530	464.656	394.583
44)	L9 AR-1268-4	10.201	8.737	1497212	804660	255.561	231.947
45)	L9 AR-1268-5	10.611	9.013	18287357	9093582	437.620	384.038

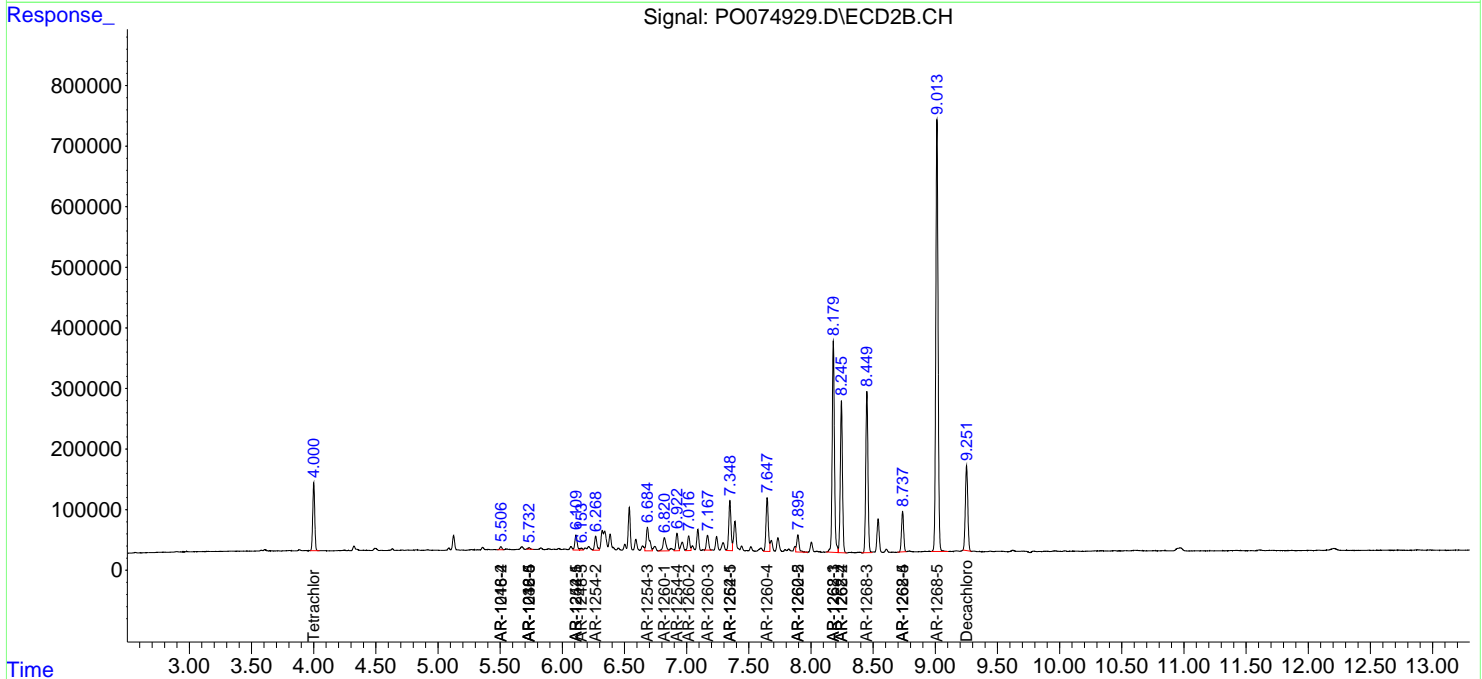
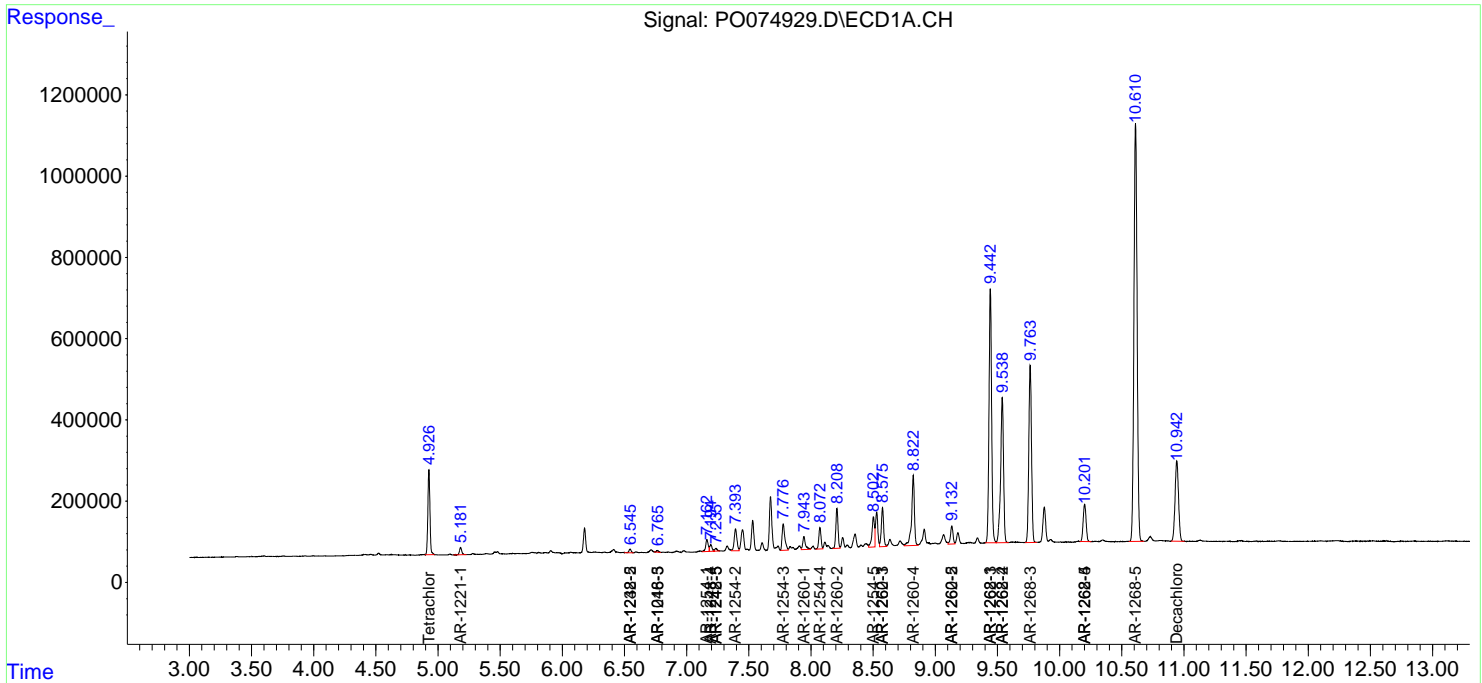
(f)=RT Delta > 1/2 Window (#)=Amounts differ by > 25% (m)=manual int.

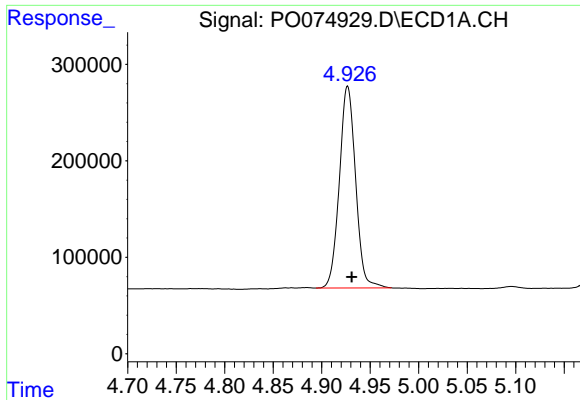
Data Path : Z:\pestpcbsrv\HPCHEM1\ECD_O\Data\P0011921\
 Data File : P0074929.D
 Signal(s) : Signal #1: ECD1A.CH Signal #2: ECD2B.CH
 Acq On : 19 Jan 2021 10:27
 Operator : AJ/MA
 Sample : M1106-09
 Misc :
 ALS Vial : 7 Sample Multiplier: 1

Instrument :
 ECD_O
 ClientSampled :

Integration File signal 1: autoint1.e
 Integration File signal 2: autoint2.e
 Quant Time: Jan 20 03:39:41 2021
 Quant Method : Z:\pestpcbsrv\HPCHEM1\ECD_O\methods\P0011121.M
 Quant Title : GC EXTRACTABLES
 QLast Update : Tue Jan 12 06:02:45 2021
 Response via : Initial Calibration
 Integrator: ChemStation 6890 Scale Mode: Small noise peaks clipped

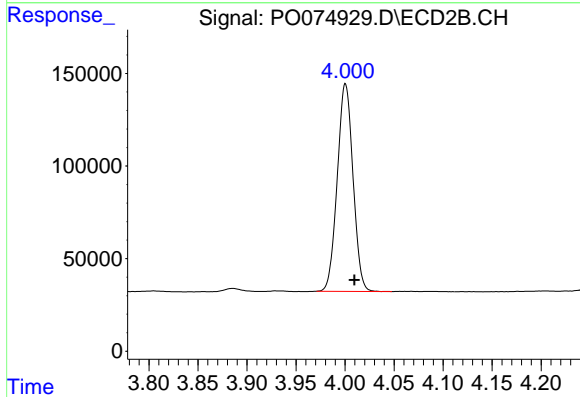
Volume Inj. : 2 µl
 Signal #1 Phase : ZB-MR1 Signal #2 Phase: ZB-MR2
 Signal #1 Info : 30Mx0.32mmx 0.50µ Signal #2 Info : 30M x 0.32mm x 0.25µm



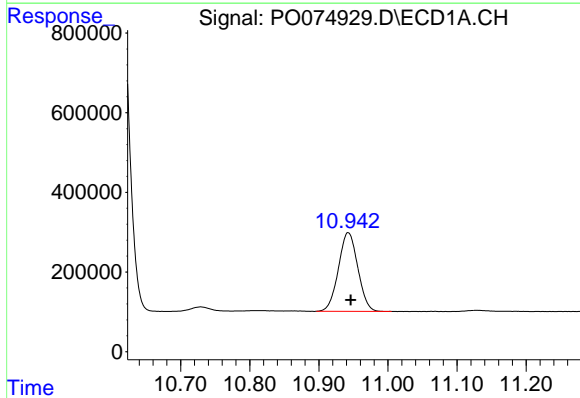


#1 Tetrachloro-m-xylene
 R.T.: 4.927 min
 Delta R.T.: -0.004 min
 Response: 2436085
 Conc: 23.09 ng/ml

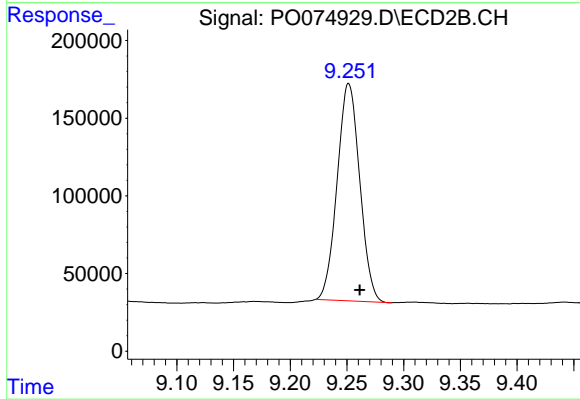
Instrument :
 ECD_O
 ClientSampled :



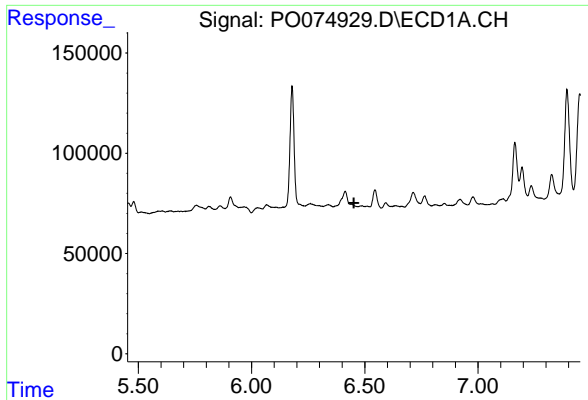
#1 Tetrachloro-m-xylene
 R.T.: 4.000 min
 Delta R.T.: -0.009 min
 Response: 1254448
 Conc: 22.30 ng/ml



#2 Decachlorobiphenyl
 R.T.: 10.943 min
 Delta R.T.: -0.004 min
 Response: 3850390
 Conc: 37.94 ng/ml



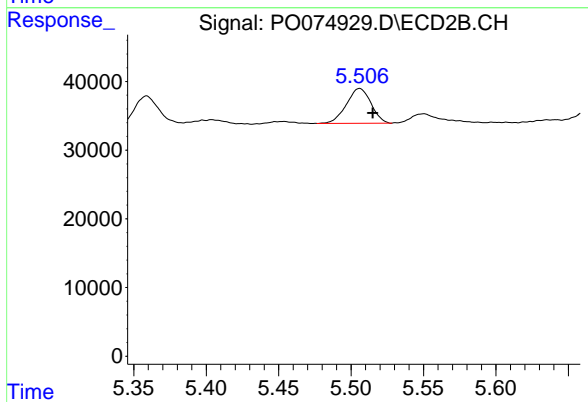
#2 Decachlorobiphenyl
 R.T.: 9.252 min
 Delta R.T.: -0.010 min
 Response: 1936179
 Conc: 35.26 ng/ml



#6 AR-1016-4

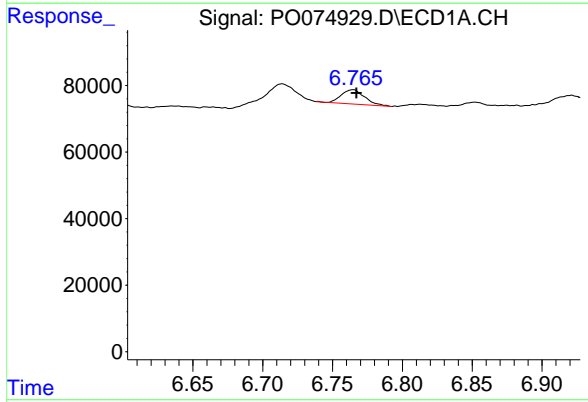
R.T.: 0.000 min
 Exp R.T.: 6.452 min
 Response: 0
 Conc: N.D.

Instrument :
 ECD_O
 ClientSampled :



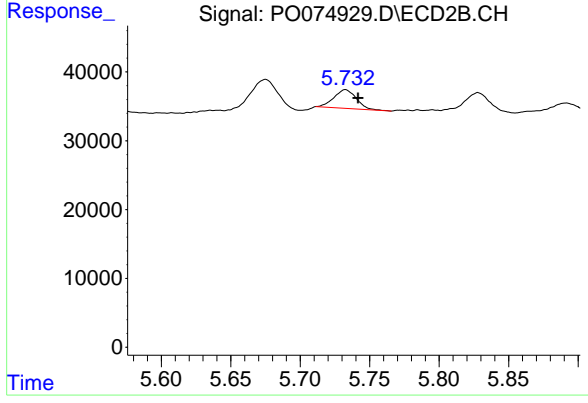
#6 AR-1016-4

R.T.: 5.506 min
 Delta R.T.: -0.009 min
 Response: 59970
 Conc: 42.67 ng/ml



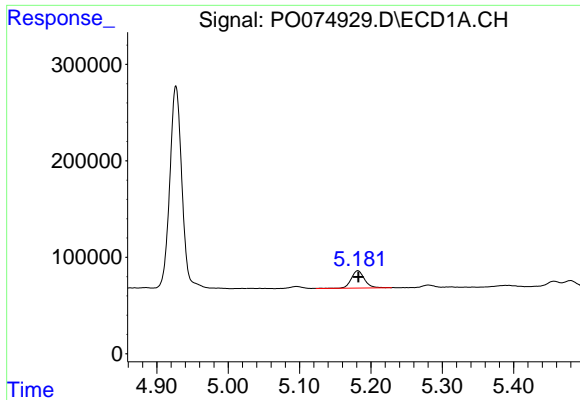
#7 AR-1016-5

R.T.: 6.765 min
 Delta R.T.: -0.002 min
 Response: 50236
 Conc: 18.37 ng/ml



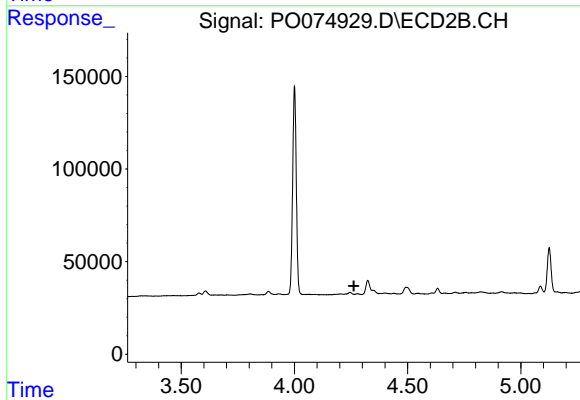
#7 AR-1016-5

R.T.: 5.733 min
 Delta R.T.: -0.009 min
 Response: 30575
 Conc: 17.78 ng/ml

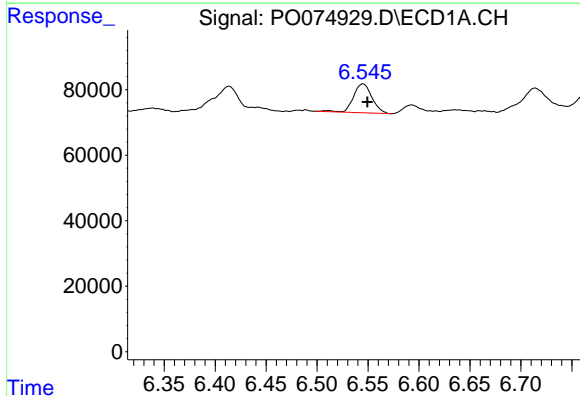


#8 AR-1221-1
 R.T.: 5.182 min
 Delta R.T.: -0.001 min
 Response: 230140
 Conc: 187.37 ng/ml

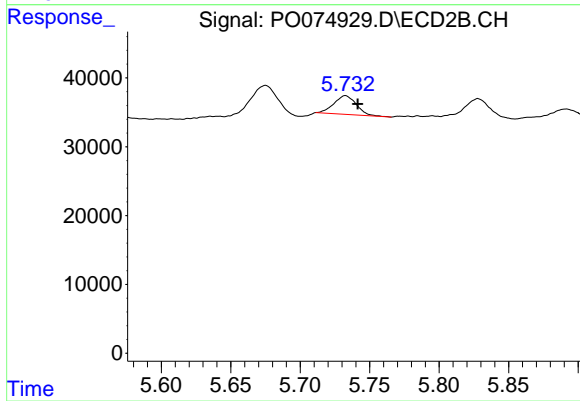
Instrument :
 ECD_O
 ClientSampled :



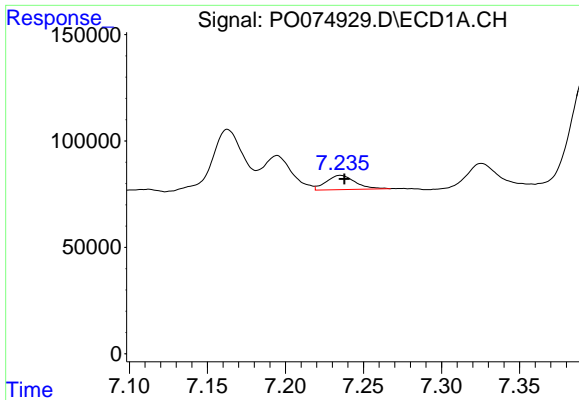
#8 AR-1221-1
 R.T.: 0.000 min
 Exp R.T. : 4.263 min
 Response: 0
 Conc: N.D.



#15 AR-1232-5
 R.T.: 6.545 min
 Delta R.T.: -0.004 min
 Response: 112104
 Conc: 137.78 ng/ml

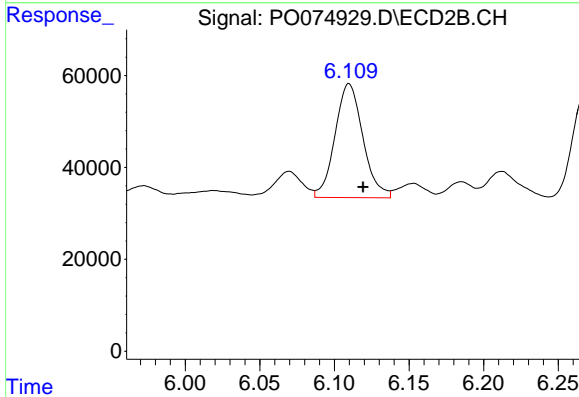


#15 AR-1232-5
 R.T.: 5.733 min
 Delta R.T.: -0.009 min
 Response: 30575
 Conc: 44.03 ng/ml

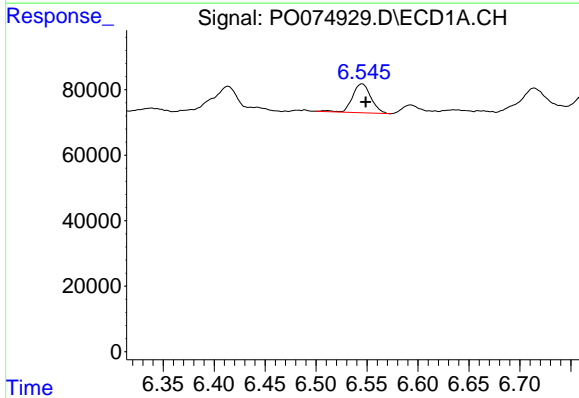


#20 AR-1242-5
 R.T.: 7.235 min
 Delta R.T.: -0.003 min
 Response: 86177
 Conc: 34.25 ng/ml

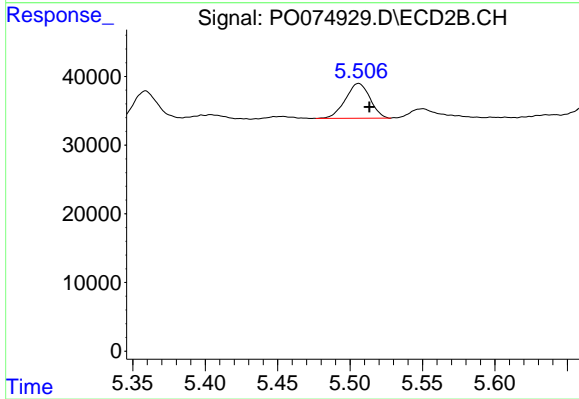
Instrument :
 ECD_O
 ClientSampleId :



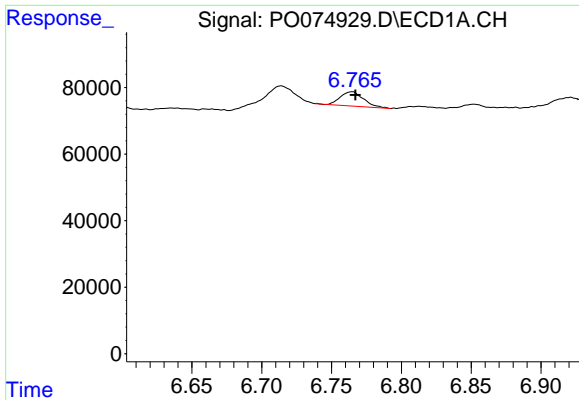
#20 AR-1242-5
 R.T.: 6.110 min
 Delta R.T.: -0.009 min
 Response: 322504
 Conc: 184.20 ng/ml



#22 AR-1248-2
 R.T.: 6.545 min
 Delta R.T.: -0.004 min
 Response: 112104
 Conc: 36.05 ng/ml



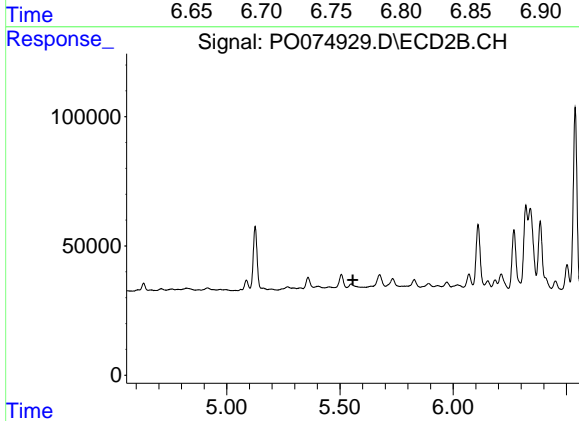
#22 AR-1248-2
 R.T.: 5.506 min
 Delta R.T.: -0.007 min
 Response: 59970
 Conc: 31.91 ng/ml



#23 AR-1248-3

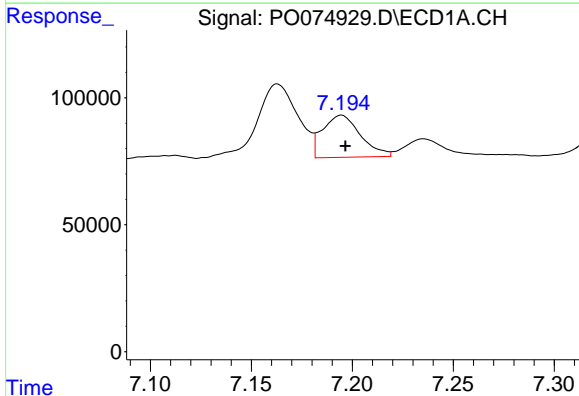
R.T.: 6.765 min
 Delta R.T.: -0.002 min
 Response: 50236
 Conc: 13.87 ng/ml

Instrument :
 ECD_O
 ClientSampled :



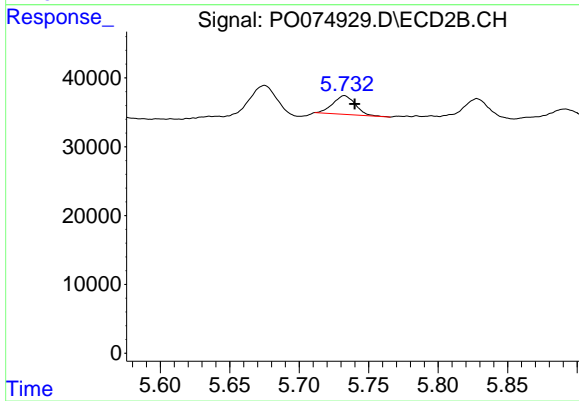
#23 AR-1248-3

R.T.: 0.000 min
 Exp R.T. : 5.557 min
 Response: 0
 Conc: N.D.



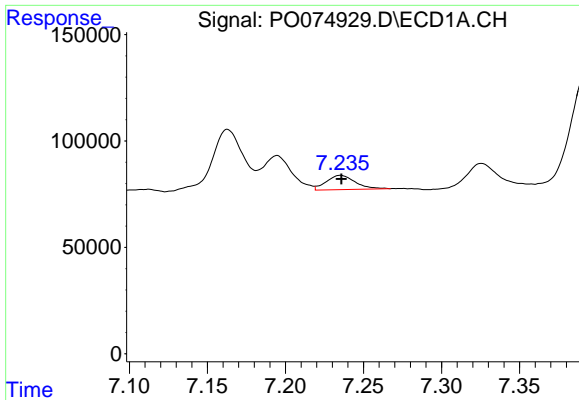
#24 AR-1248-4

R.T.: 7.195 min
 Delta R.T.: -0.002 min
 Response: 216929
 Conc: 48.64 ng/ml



#24 AR-1248-4

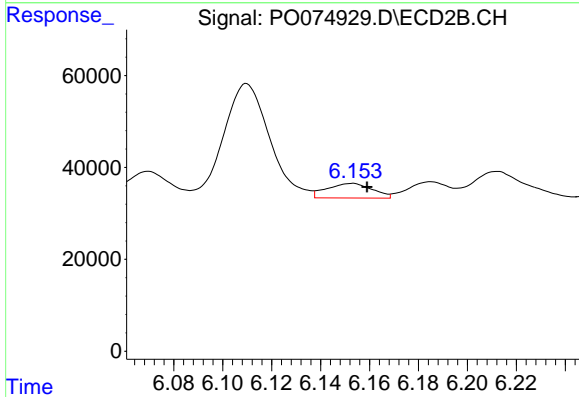
R.T.: 5.733 min
 Delta R.T.: -0.007 min
 Response: 30575
 Conc: 13.57 ng/ml



#25 AR-1248-5

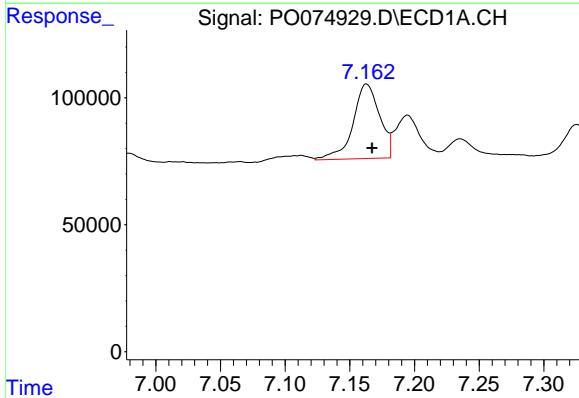
R.T.: 7.235 min
 Delta R.T.: 0.000 min
 Response: 86177
 Conc: 20.45 ng/ml

Instrument :
 ECD_O
 ClientSampleId :



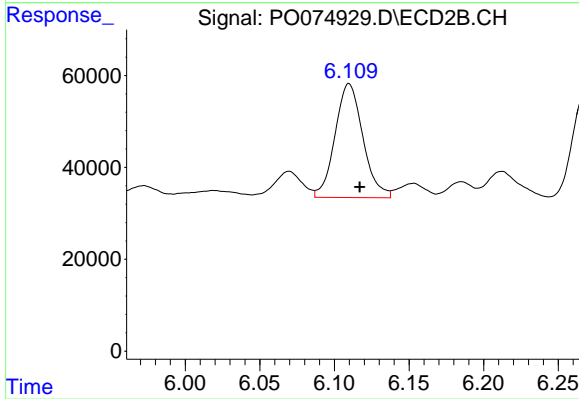
#25 AR-1248-5

R.T.: 6.153 min
 Delta R.T.: -0.006 min
 Response: 40952
 Conc: 17.42 ng/ml



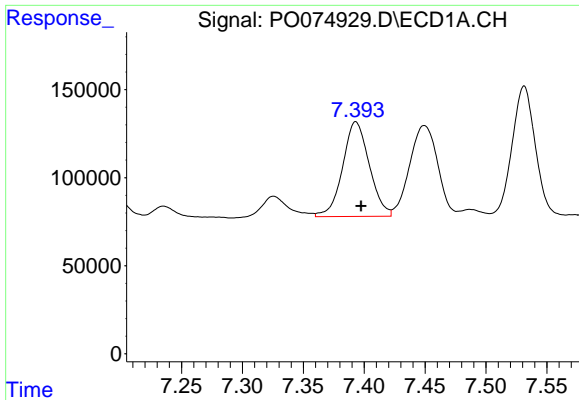
#26 AR-1254-1

R.T.: 7.163 min
 Delta R.T.: -0.004 min
 Response: 420340
 Conc: 95.57 ng/ml



#26 AR-1254-1

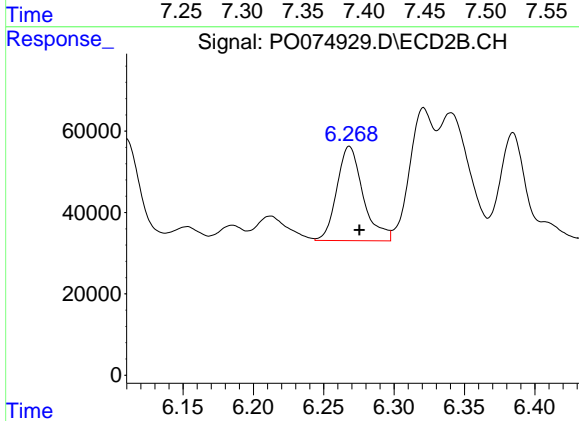
R.T.: 6.110 min
 Delta R.T.: -0.007 min
 Response: 322504
 Conc: 89.29 ng/ml



#27 AR-1254-2

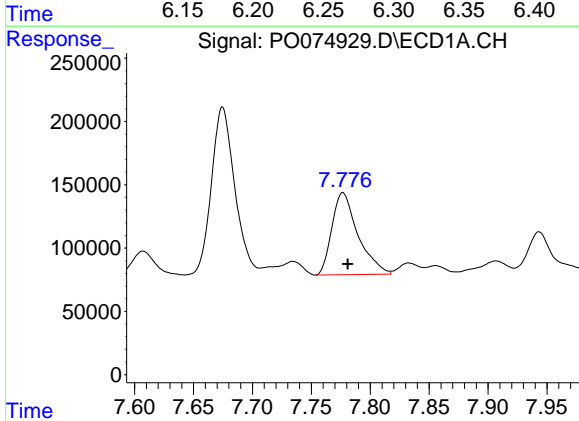
R.T.: 7.393 min
 Delta R.T.: -0.004 min
 Response: 818942
 Conc: 120.24 ng/ml

Instrument :
 ECD_O
 ClientSampled :



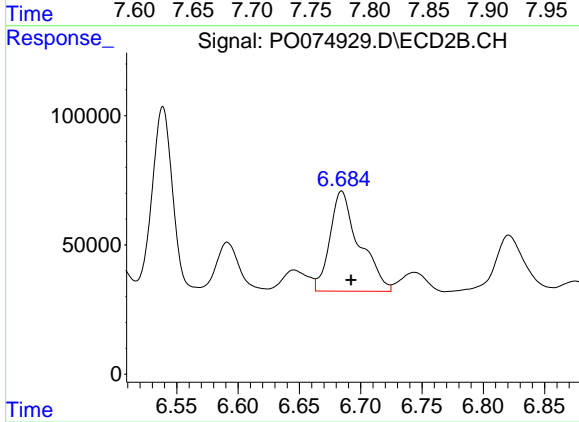
#27 AR-1254-2

R.T.: 6.268 min
 Delta R.T.: -0.007 min
 Response: 301668
 Conc: 96.80 ng/ml



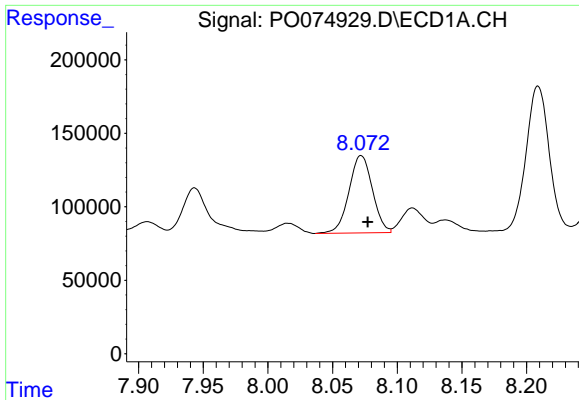
#28 AR-1254-3

R.T.: 7.777 min
 Delta R.T.: -0.004 min
 Response: 1001222
 Conc: 142.74 ng/ml



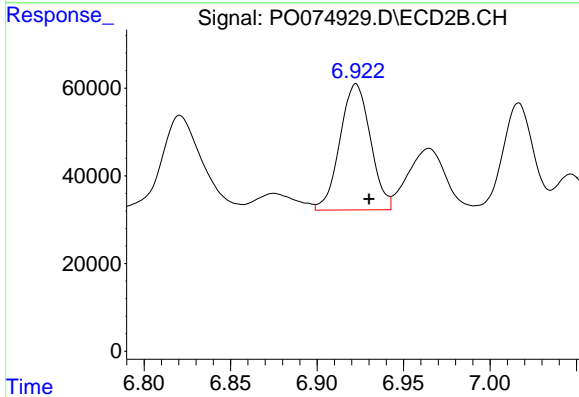
#28 AR-1254-3

R.T.: 6.684 min
 Delta R.T.: -0.008 min
 Response: 647899
 Conc: 132.12 ng/ml

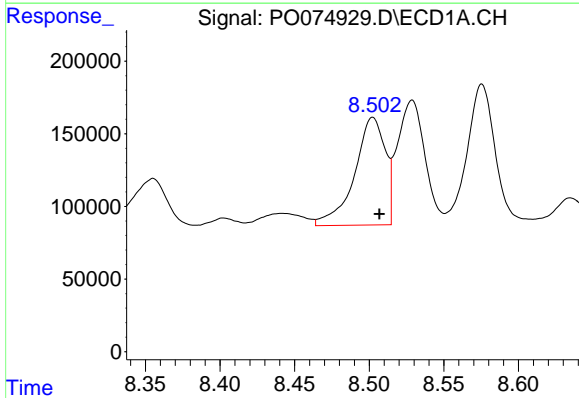


#29 AR-1254-4
 R.T.: 8.072 min
 Delta R.T.: -0.005 min
 Response: 664171
 Conc: 109.51 ng/ml

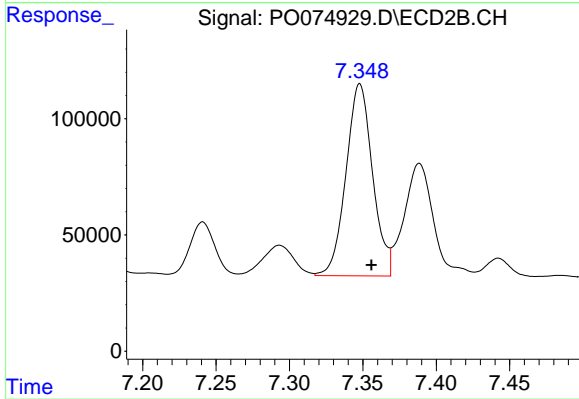
Instrument :
 ECD_O
 ClientSampled :



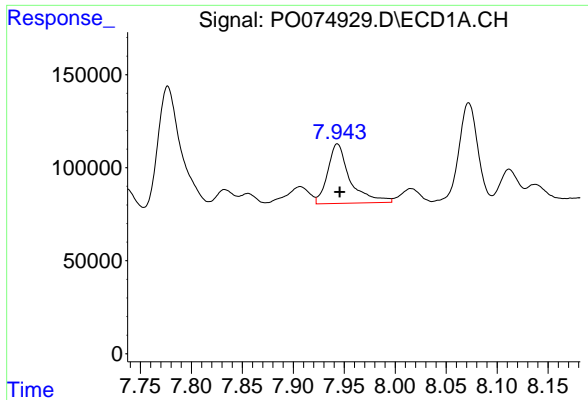
#29 AR-1254-4
 R.T.: 6.922 min
 Delta R.T.: -0.008 min
 Response: 351974
 Conc: 101.50 ng/ml



#30 AR-1254-5
 R.T.: 8.502 min
 Delta R.T.: -0.005 min
 Response: 1061009
 Conc: 182.65 ng/ml

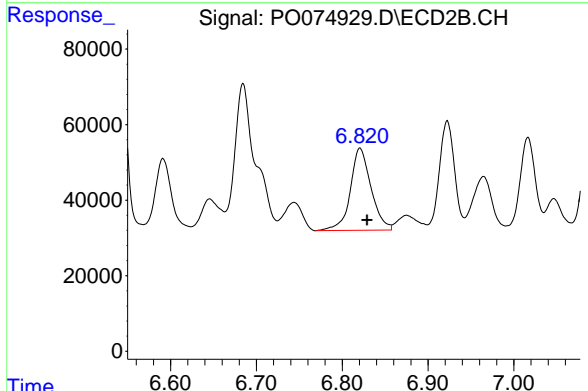


#30 AR-1254-5
 R.T.: 7.348 min
 Delta R.T.: -0.008 min
 Response: 1042283
 Conc: 230.29 ng/ml

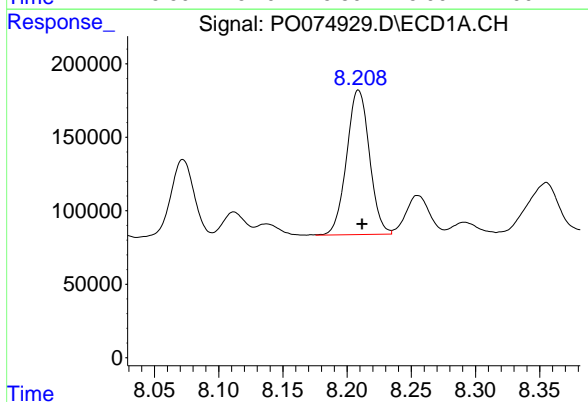


#31 AR-1260-1
 R.T.: 7.943 min
 Delta R.T.: -0.002 min
 Response: 490346
 Conc: 98.29 ng/ml

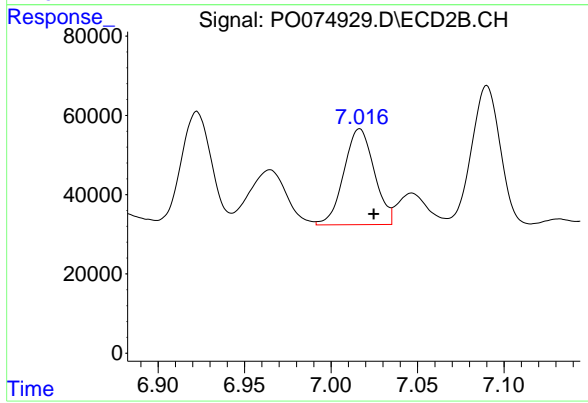
Instrument :
 ECD_O
 ClientSampleId :



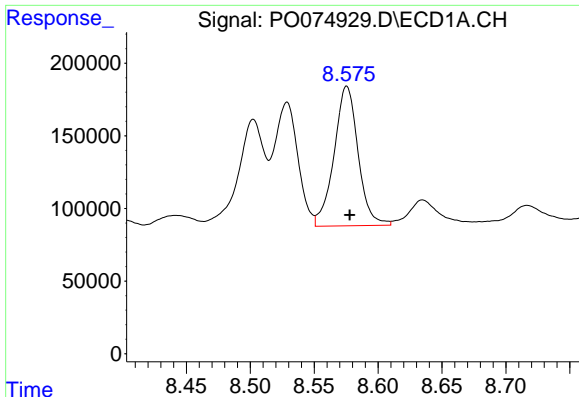
#31 AR-1260-1
 R.T.: 6.821 min
 Delta R.T.: -0.008 min
 Response: 364869
 Conc: 114.37 ng/ml



#32 AR-1260-2
 R.T.: 8.209 min
 Delta R.T.: -0.003 min
 Response: 1216231
 Conc: 178.80 ng/ml



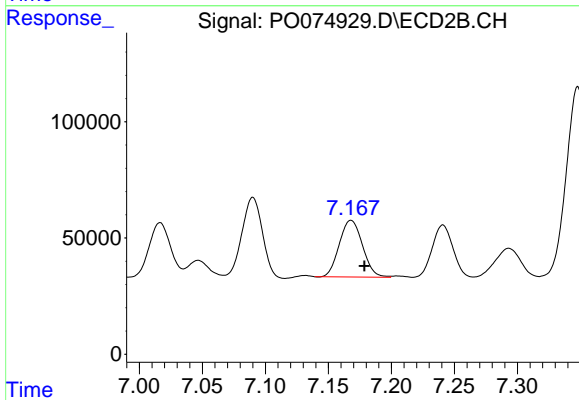
#32 AR-1260-2
 R.T.: 7.016 min
 Delta R.T.: -0.008 min
 Response: 295393
 Conc: 69.49 ng/ml



#33 AR-1260-3

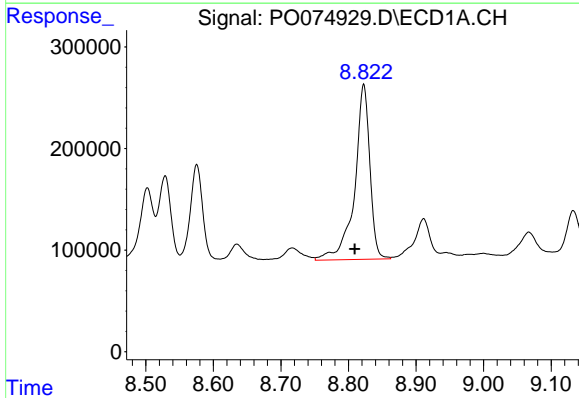
R.T.: 8.575 min
 Delta R.T.: -0.002 min
 Response: 1259996
 Conc: 219.83 ng/ml

Instrument :
 ECD_O
 ClientSampleId :



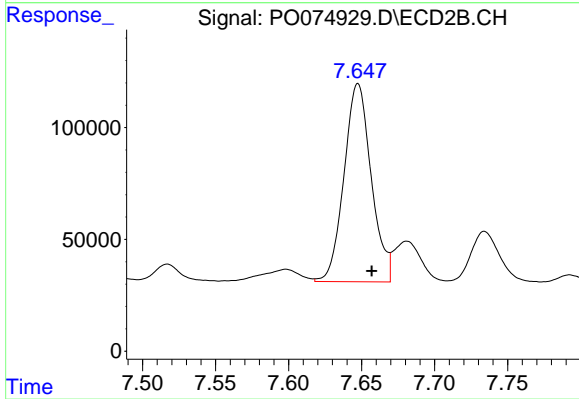
#33 AR-1260-3

R.T.: 7.168 min
 Delta R.T.: -0.011 min
 Response: 313507
 Conc: 87.00 ng/ml



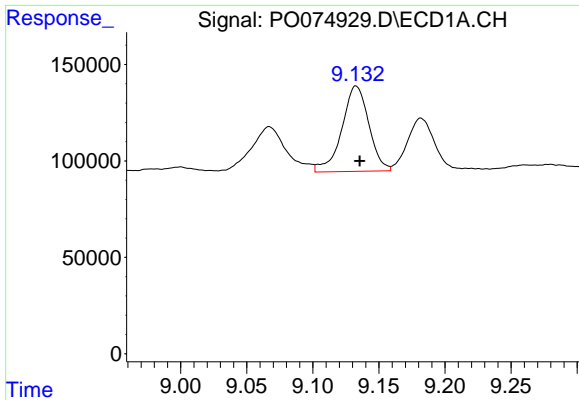
#34 AR-1260-4

R.T.: 8.823 min
 Delta R.T.: 0.013 min
 Response: 2697281
 Conc: 492.99 ng/ml



#34 AR-1260-4

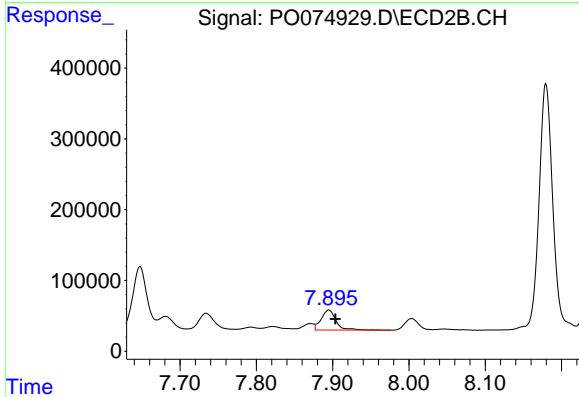
R.T.: 7.648 min
 Delta R.T.: -0.009 min
 Response: 1147852
 Conc: 366.57 ng/ml



#35 AR-1260-5

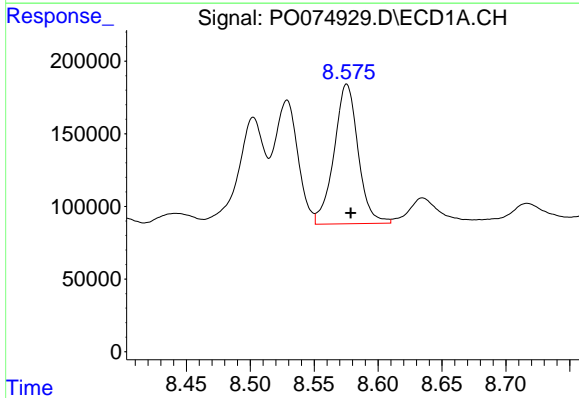
R.T.: 9.133 min
 Delta R.T.: -0.003 min
 Response: 631790
 Conc: 50.56 ng/ml

Instrument :
 ECD_O
 ClientSampleId :



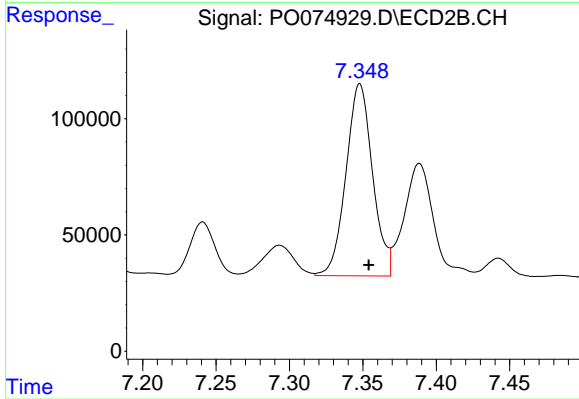
#35 AR-1260-5

R.T.: 7.895 min
 Delta R.T.: -0.008 min
 Response: 381886
 Conc: 48.04 ng/ml



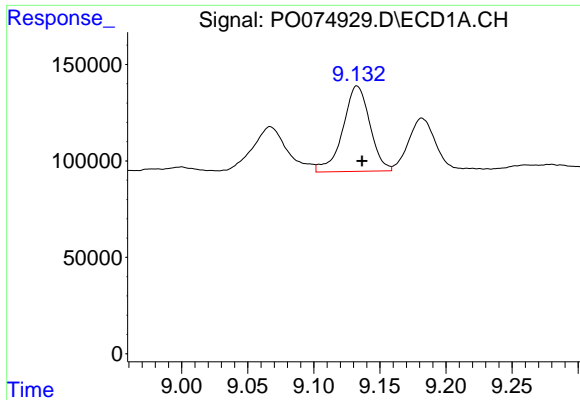
#36 AR-1262-1

R.T.: 8.575 min
 Delta R.T.: -0.003 min
 Response: 1259996
 Conc: 141.51 ng/ml



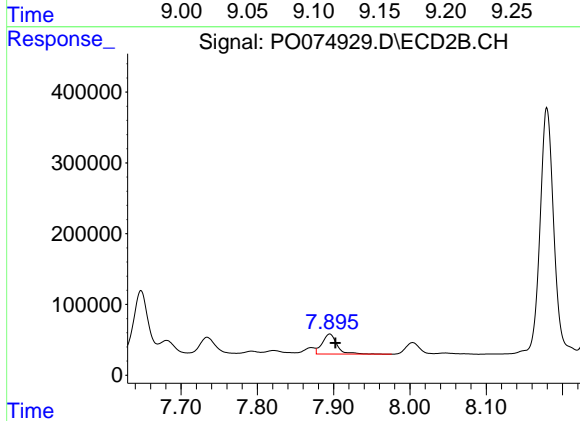
#36 AR-1262-1

R.T.: 7.348 min
 Delta R.T.: -0.006 min
 Response: 1042283
 Conc: 409.61 ng/ml

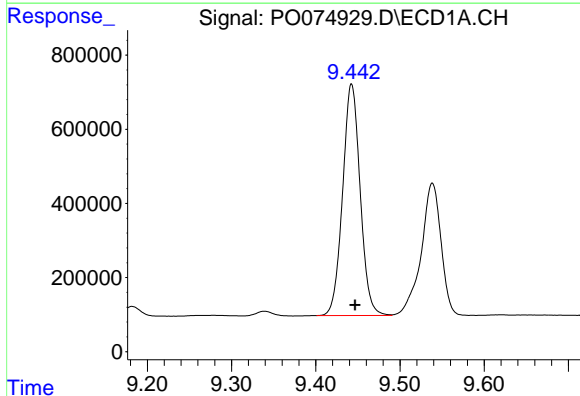


#37 AR-1262-2
 R.T.: 9.133 min
 Delta R.T.: -0.004 min
 Response: 631790
 Conc: 41.27 ng/ml

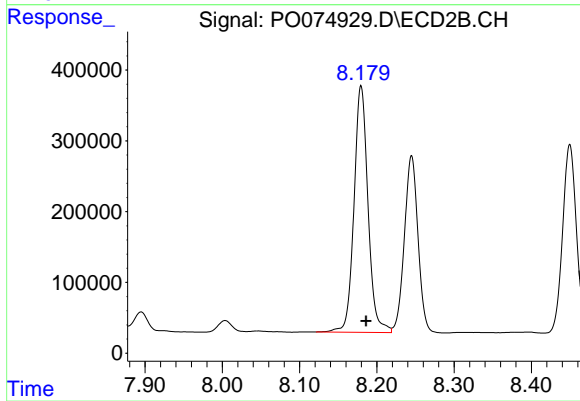
Instrument :
 ECD_O
 ClientSampled :



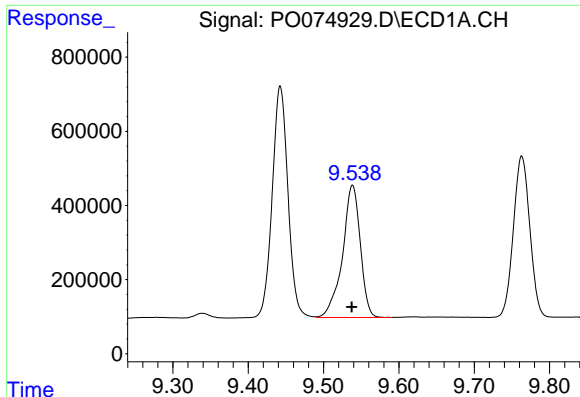
#37 AR-1262-2
 R.T.: 7.895 min
 Delta R.T.: -0.007 min
 Response: 381886
 Conc: 41.53 ng/ml



#38 AR-1262-3
 R.T.: 9.443 min
 Delta R.T.: -0.004 min
 Response: 9050818
 Conc: 903.65 ng/ml



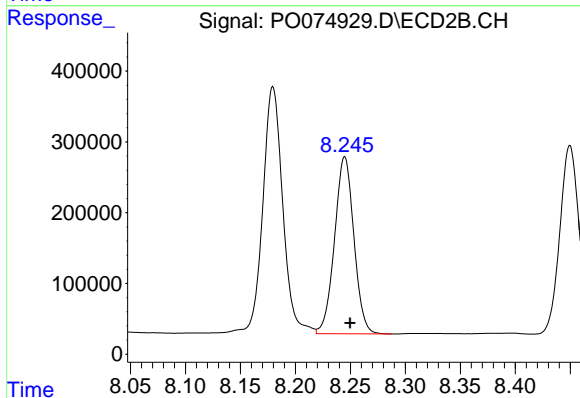
#38 AR-1262-3
 R.T.: 8.180 min
 Delta R.T.: -0.007 min
 Response: 4395965
 Conc: 1111.69 ng/ml



#39 AR-1262-4

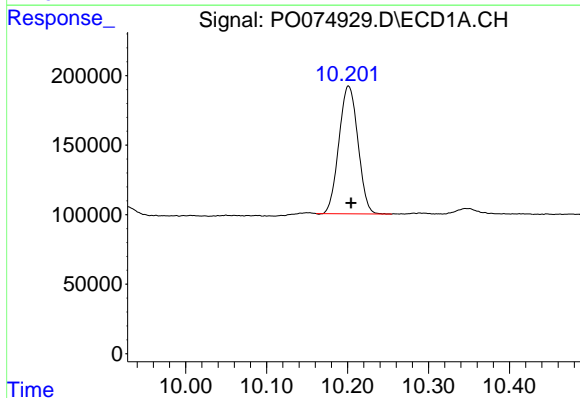
R.T.: 9.538 min
 Delta R.T.: 0.000 min
 Response: 5856962
 Conc: 786.45 ng/ml

Instrument :
 ECD_O
 ClientSampled :



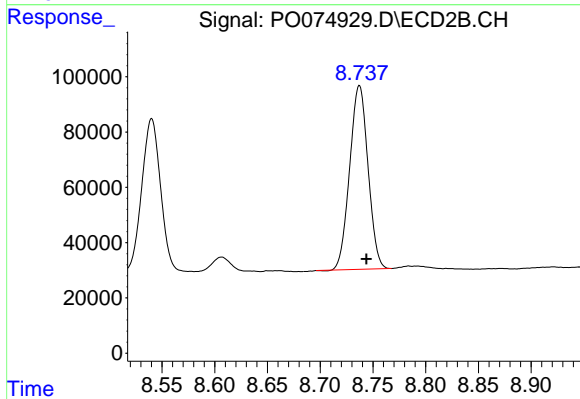
#39 AR-1262-4

R.T.: 8.245 min
 Delta R.T.: -0.005 min
 Response: 3060571
 Conc: 461.96 ng/ml



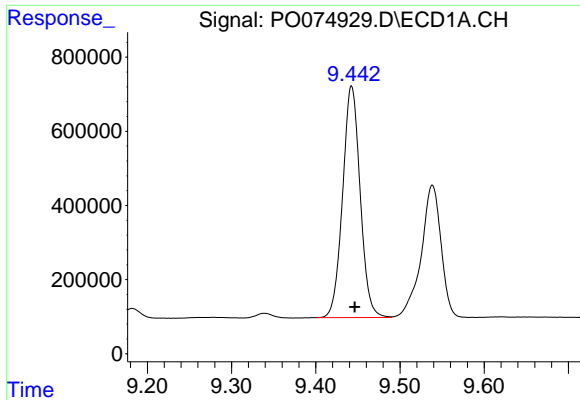
#40 AR-1262-5

R.T.: 10.201 min
 Delta R.T.: -0.003 min
 Response: 1497212
 Conc: 286.19 ng/ml



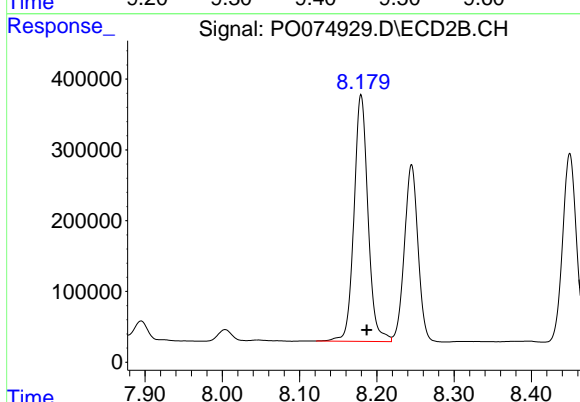
#40 AR-1262-5

R.T.: 8.737 min
 Delta R.T.: -0.007 min
 Response: 804660
 Conc: 260.63 ng/ml

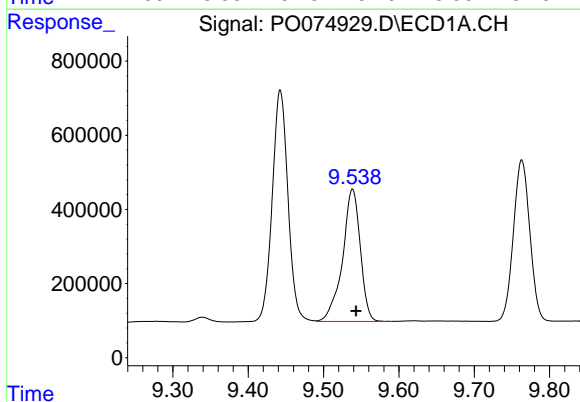


#41 AR-1268-1
 R.T.: 9.443 min
 Delta R.T.: -0.004 min
 Response: 9050818
 Conc: 484.43 ng/ml

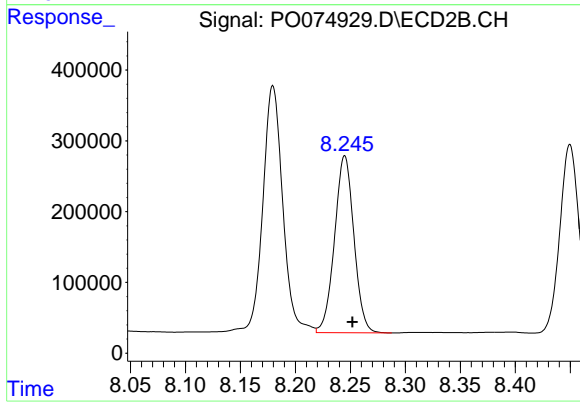
Instrument :
 ECD_O
 ClientSampled :



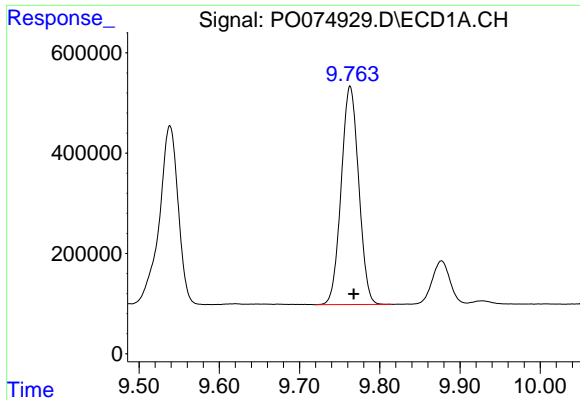
#41 AR-1268-1
 R.T.: 8.180 min
 Delta R.T.: -0.007 min
 Response: 4395965
 Conc: 392.68 ng/ml



#42 AR-1268-2
 R.T.: 9.538 min
 Delta R.T.: -0.005 min
 Response: 5856962
 Conc: 367.09 ng/ml

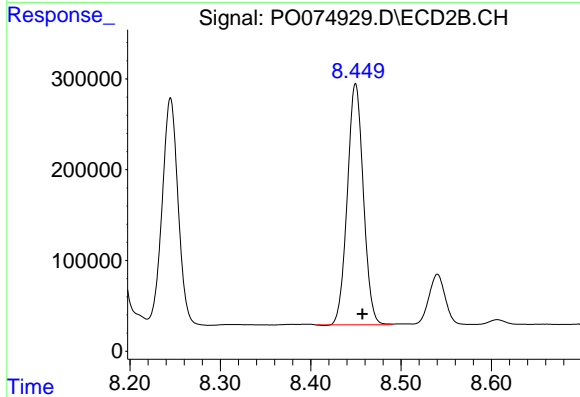


#42 AR-1268-2
 R.T.: 8.245 min
 Delta R.T.: -0.007 min
 Response: 3060571
 Conc: 319.90 ng/ml

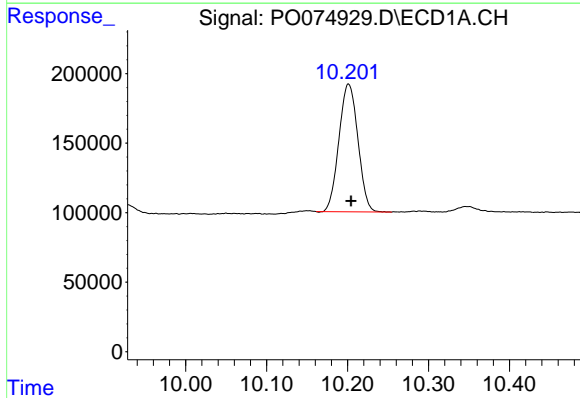


#43 AR-1268-3
 R.T.: 9.763 min
 Delta R.T.: -0.005 min
 Response: 6599040
 Conc: 464.66 ng/ml

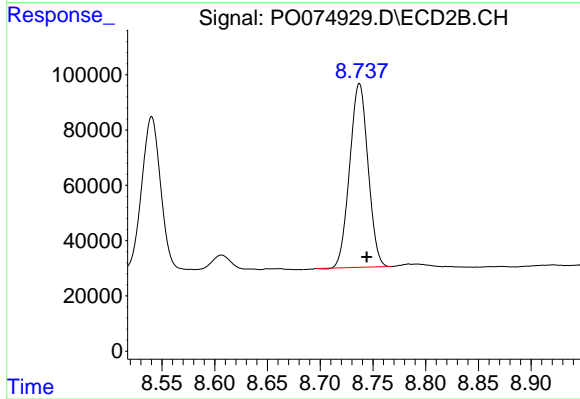
Instrument :
 ECD_O
 ClientSampled :



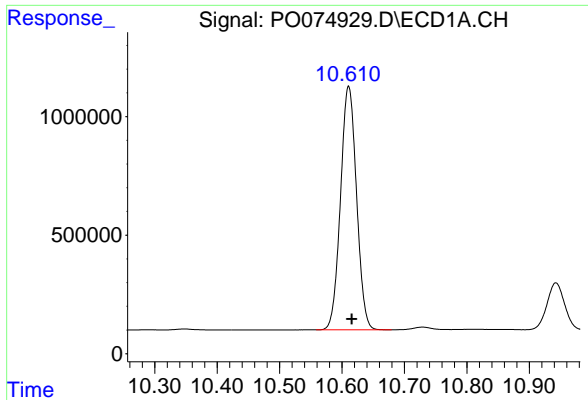
#43 AR-1268-3
 R.T.: 8.450 min
 Delta R.T.: -0.008 min
 Response: 3278530
 Conc: 394.58 ng/ml



#44 AR-1268-4
 R.T.: 10.201 min
 Delta R.T.: -0.003 min
 Response: 1497212
 Conc: 255.56 ng/ml



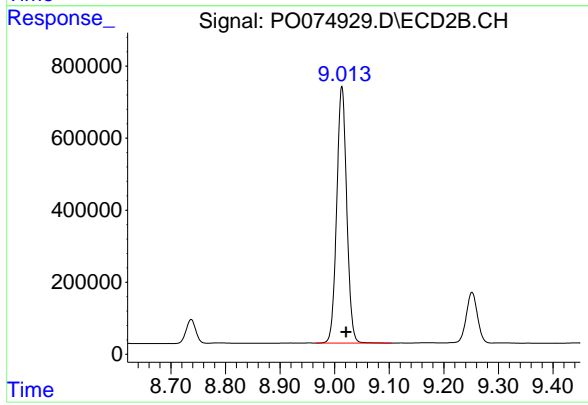
#44 AR-1268-4
 R.T.: 8.737 min
 Delta R.T.: -0.007 min
 Response: 804660
 Conc: 231.95 ng/ml



#45 AR-1268-5

R.T.: 10.611 min
Delta R.T.: -0.005 min
Response: 18287357
Conc: 437.62 ng/ml

Instrument :
ECD_O
ClientSampleId :



#45 AR-1268-5

R.T.: 9.013 min
Delta R.T.: -0.008 min
Response: 9093582
Conc: 384.04 ng/ml