

Data Path : Z:\pestpcbsrv\HPCHEM1\ECD_0\Data\P0011921\
 Data File : P0074932.D
 Signal(s) : Signal #1: ECD1A.CH Signal #2: ECD2B.CH
 Acq On : 19 Jan 2021 11:18
 Operator : AJ/MA
 Sample : M1104-18
 Misc :
 ALS Vial : 10 Sample Multiplier: 1

Instrument :
 ECD_O
 ClientSampled :

Integration File signal 1: autoint1.e
 Integration File signal 2: autoint2.e
 Quant Time: Jan 20 03:40:55 2021
 Quant Method : Z:\pestpcbsrv\HPCHEM1\ECD_0\methods\P0011121.M
 Quant Title : GC EXTRACTABLES
 QLast Update : Tue Jan 12 06:02:45 2021
 Response via : Initial Calibration
 Integrator: ChemStation 6890 Scale Mode: Small noise peaks clipped

Volume Inj. : 2 µl
 Signal #1 Phase : ZB-MR1 Signal #2 Phase: ZB-MR2
 Signal #1 Info : 30Mx0.32mmx 0.50µ Signal #2 Info : 30M x 0.32mm x 0.25µm

Compound	RT#1	RT#2	Resp#1	Resp#2	ng/ml	ng/ml
System Monitoring Compounds						
1) SA Tetrachlo...	4.927	4.001	2135614	1095929	20.239	19.482
2) SA Decachlor...	10.940	9.252	3519217	1686954	34.675	30.725
Target Compounds						
6) L1 AR-1016-4	0.000	5.506	0	65193	N.D.	46.387 #
7) L1 AR-1016-5	6.762	5.732	63549	28082	23.235	16.331 #
8) L2 AR-1221-1	5.182	0.000	115438	0	93.982	N.D. #
10) L2 AR-1221-3	5.381	0.000	46204	0	16.400	N.D. #
11) L3 AR-1232-1	5.381	0.000	46204	0	20.174	N.D. #
14) L3 AR-1232-4	0.000	5.550	0	32560	N.D.	51.199 #
15) L3 AR-1232-5	6.546	5.732	108960	28082	133.914	40.441 #
19) L4 AR-1242-4	0.000	5.550	0	32560	N.D.	24.913 #
20) L4 AR-1242-5	7.235	6.110	128314	320214	50.990	182.892 #
22) L5 AR-1248-2	6.546	5.506	108960	65193	35.035	34.689
23) L5 AR-1248-3	6.762	5.550	63549	32560	17.549	17.249
24) L5 AR-1248-4	7.194	5.732	342808	28082	76.872	12.468 #
25) L5 AR-1248-5	7.235	6.151	128314	40137	30.448	17.072 #
26) L6 AR-1254-1	7.162	6.110	737626	320214	167.713	88.653 #
27) L6 AR-1254-2	7.392	6.269	852996	432593	125.242	138.806
28) L6 AR-1254-3	7.777	6.684	1125047	824120	160.393	168.053
29) L6 AR-1254-4	8.072	6.922	843991	439752	139.165	126.811
30) L6 AR-1254-5	8.502	7.348	1809151	1276021	311.443	281.935
31) L7 AR-1260-1	7.942	6.820	752318	576296	150.803	180.641
32) L7 AR-1260-2	8.209	7.017	1198056	566498	176.130	133.261
33) L7 AR-1260-3	8.574	7.168	2277452	447129	397.341	124.083 #
34) L7 AR-1260-4	8.822	7.646	3725089	1490212	680.840	475.905 #
35) L7 AR-1260-5	9.133	7.895	1247687	856615	99.855	107.768
36) L8 AR-1262-1	8.574	7.348	2277452	1276021	255.774	501.467 #
37) L8 AR-1262-2	9.133	7.895	1247687	856615	81.494	93.168
38) L8 AR-1262-3	9.442	8.179	11174172	5558470	1115.655	1405.671 #
39) L8 AR-1262-4	9.537	8.244	7623458	4206671	1023.648	634.949 #
40) L8 AR-1262-5	10.199	8.737	2248241	1134423	429.744	367.434
41) L9 AR-1268-1	9.442	8.179	11174172	5558470	598.079	496.525
42) L9 AR-1268-2	9.537	8.244	7623458	4206671	477.812	439.697
43) L9 AR-1268-3	9.761	8.449	7389679	3640831	520.327	438.187
44) L9 AR-1268-4	10.199	8.737	2248241	1134423	383.754	327.003
45) L9 AR-1268-5	10.609	9.013	20234321	9744350	484.211	411.521

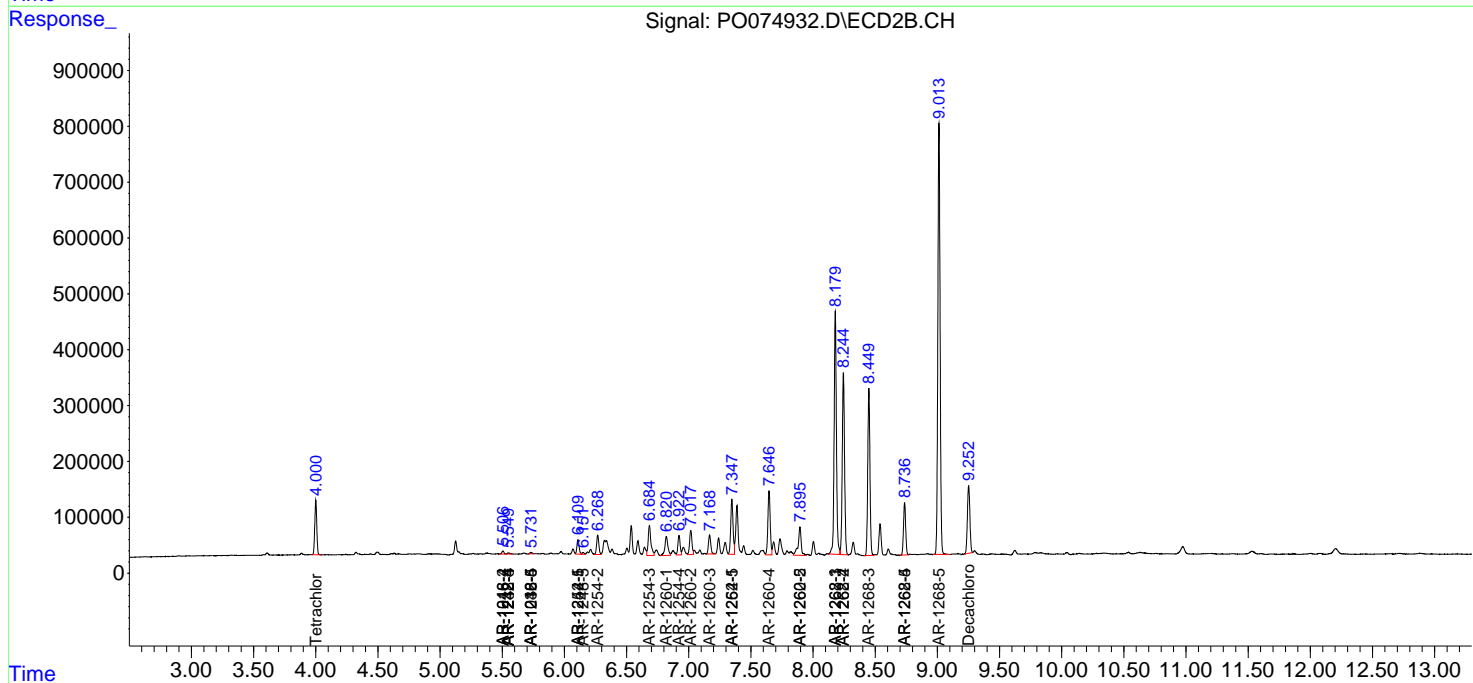
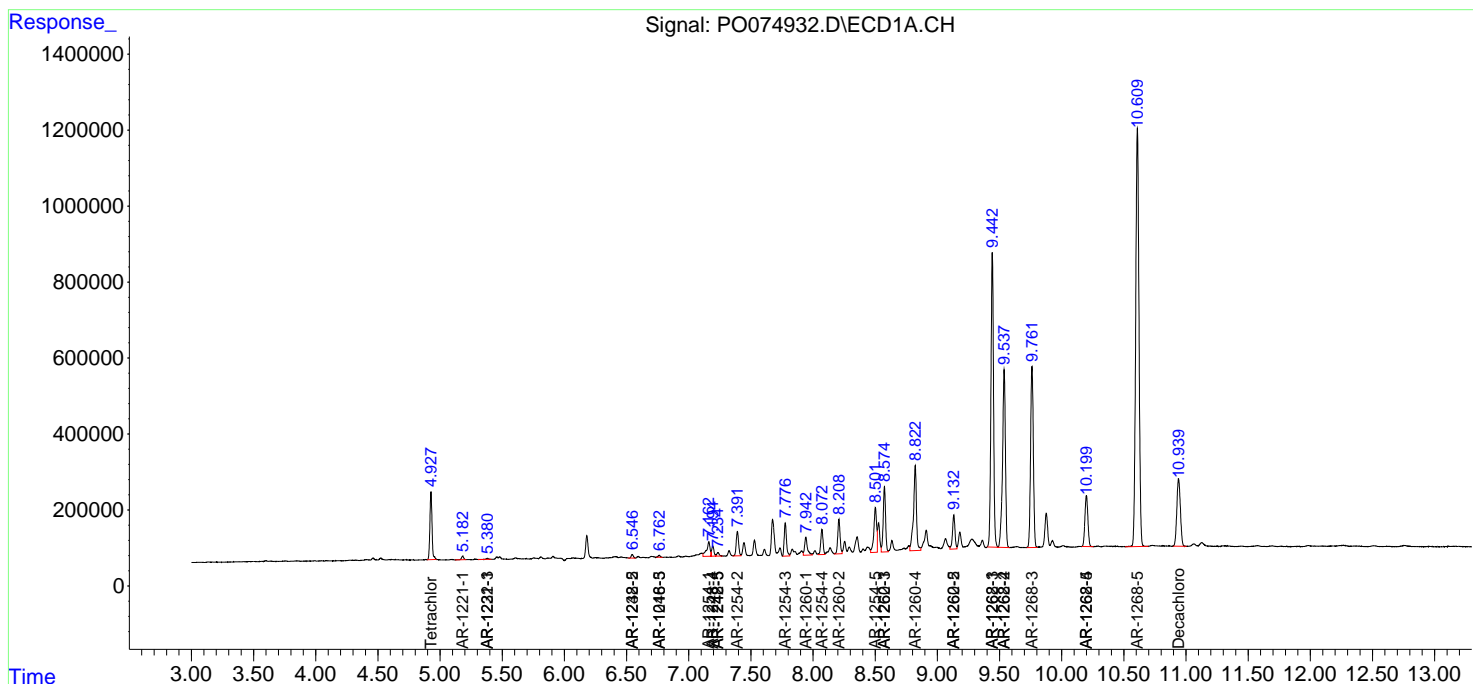
(f)=RT Delta > 1/2 Window (#)=Amounts differ by > 25% (m)=manual int.

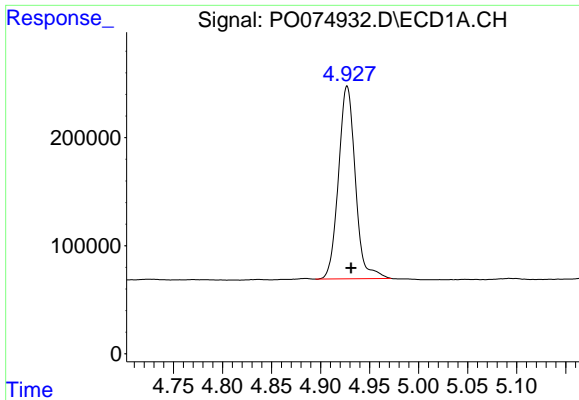
Data Path : Z:\pestpcbsrv\HPCHEM1\ECD_O\Data\P0011921\
 Data File : P0074932.D
 Signal(s) : Signal #1: ECD1A.CH Signal #2: ECD2B.CH
 Acq On : 19 Jan 2021 11:18
 Operator : AJ/MA
 Sample : M1104-18
 Misc :
 ALS Vial : 10 Sample Multiplier: 1

Instrument :
 ECD_O
 ClientSampled :

Integration File signal 1: autoint1.e
 Integration File signal 2: autoint2.e
 Quant Time: Jan 20 03:40:55 2021
 Quant Method : Z:\pestpcbsrv\HPCHEM1\ECD_O\methods\P0011121.M
 Quant Title : GC EXTRACTABLES
 QLast Update : Tue Jan 12 06:02:45 2021
 Response via : Initial Calibration
 Integrator: ChemStation 6890 Scale Mode: Small noise peaks clipped

Volume Inj. : 2 µl
 Signal #1 Phase : ZB-MR1 Signal #2 Phase: ZB-MR2
 Signal #1 Info : 30Mx0.32mmx 0.50µ Signal #2 Info : 30M x 0.32mm x 0.25µm

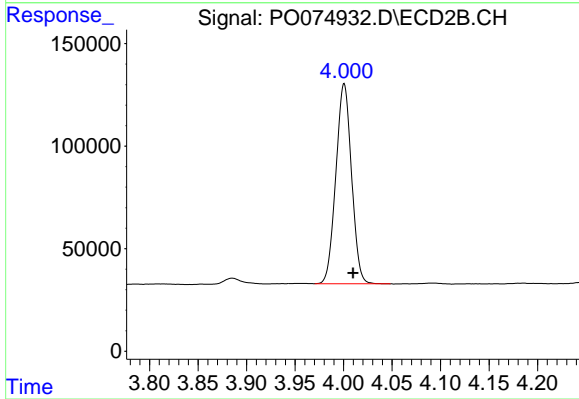




#1 Tetrachloro-m-xylene

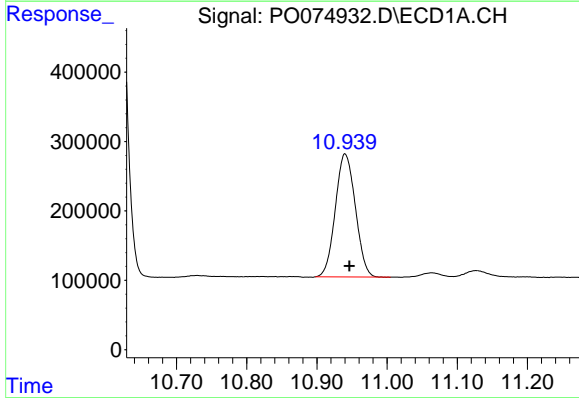
R.T.: 4.927 min
 Delta R.T.: -0.004 min
 Response: 2135614
 Conc: 20.24 ng/ml

Instrument :
 ECD_O
 ClientSampled :



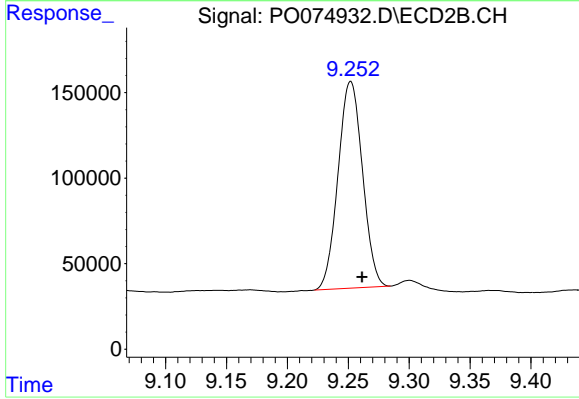
#1 Tetrachloro-m-xylene

R.T.: 4.001 min
 Delta R.T.: -0.009 min
 Response: 1095929
 Conc: 19.48 ng/ml



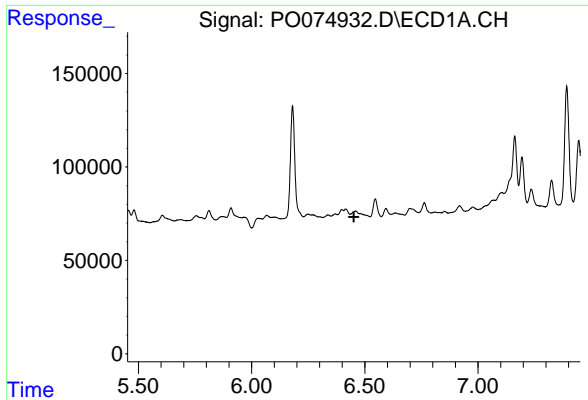
#2 Decachlorobiphenyl

R.T.: 10.940 min
 Delta R.T.: -0.006 min
 Response: 3519217
 Conc: 34.67 ng/ml



#2 Decachlorobiphenyl

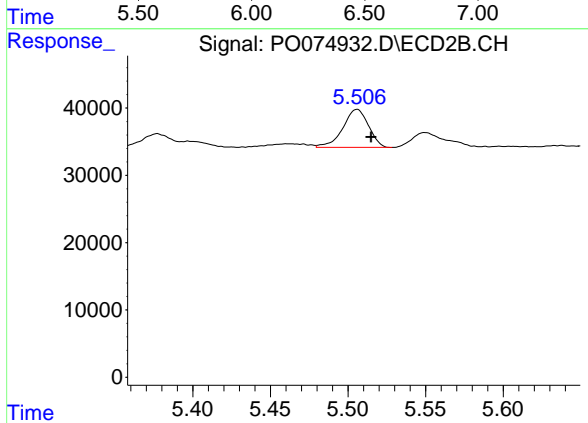
R.T.: 9.252 min
 Delta R.T.: -0.009 min
 Response: 1686954
 Conc: 30.73 ng/ml



#6 AR-1016-4

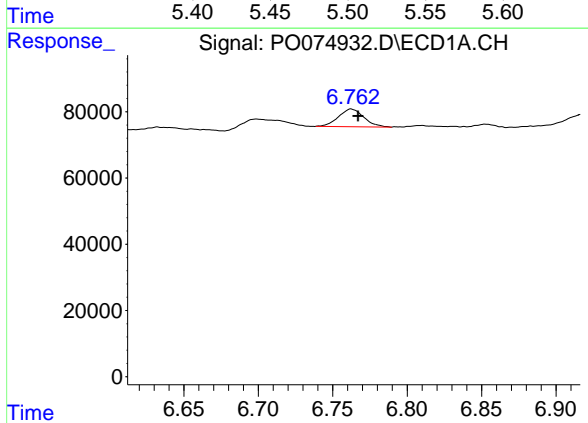
R.T.: 0.000 min
 Exp R.T.: 6.452 min
 Response: 0
 Conc: N.D.

Instrument :
 ECD_O
 ClientSampled :



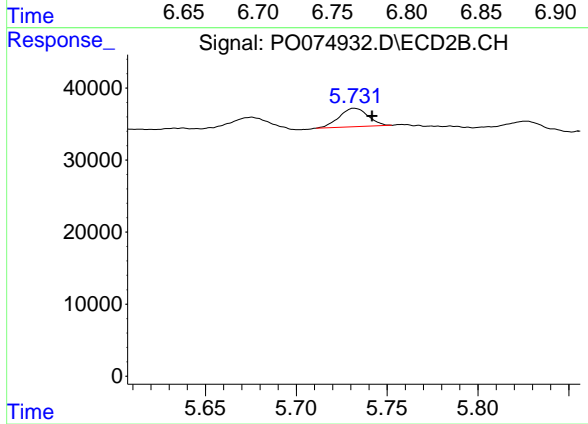
#6 AR-1016-4

R.T.: 5.506 min
 Delta R.T.: -0.009 min
 Response: 65193
 Conc: 46.39 ng/ml



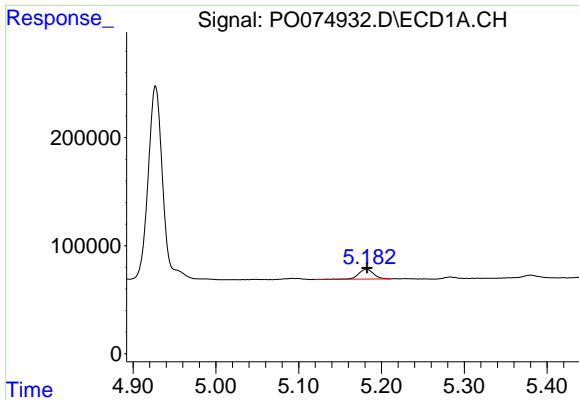
#7 AR-1016-5

R.T.: 6.762 min
 Delta R.T.: -0.005 min
 Response: 63549
 Conc: 23.24 ng/ml



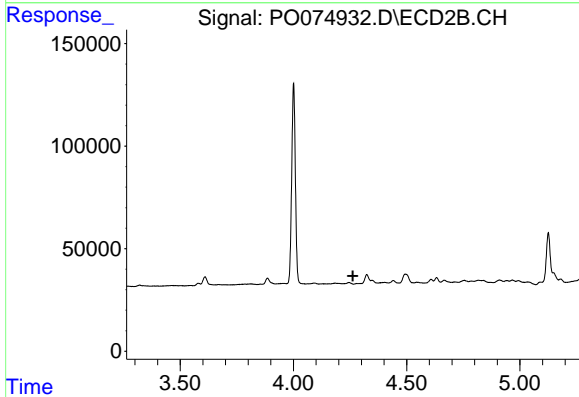
#7 AR-1016-5

R.T.: 5.732 min
 Delta R.T.: -0.010 min
 Response: 28082
 Conc: 16.33 ng/ml

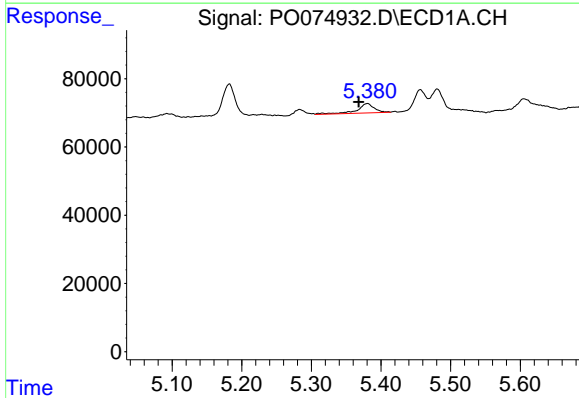


#8 AR-1221-1
 R.T.: 5.182 min
 Delta R.T.: 0.000 min
 Response: 115438
 Conc: 93.98 ng/ml

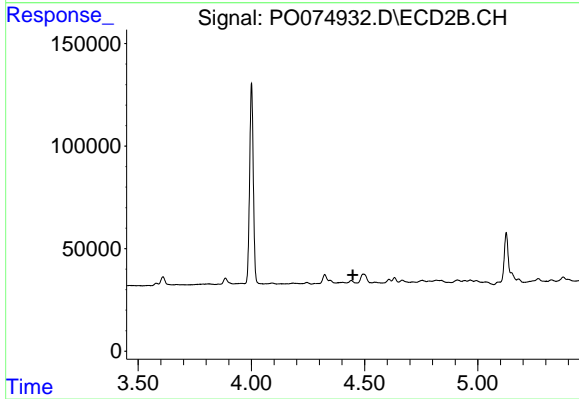
Instrument :
 ECD_O
 ClientSampled :



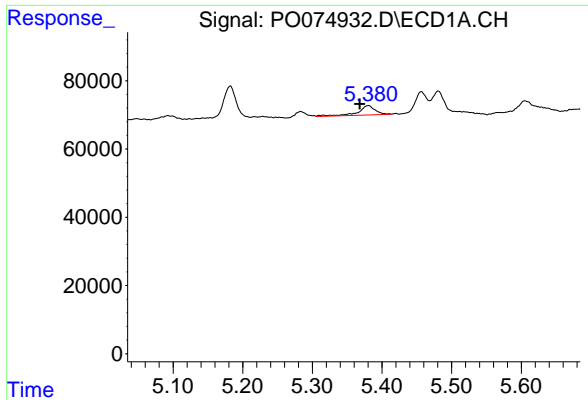
#8 AR-1221-1
 R.T.: 0.000 min
 Exp R.T. : 4.263 min
 Response: 0
 Conc: N.D.



#10 AR-1221-3
 R.T.: 5.381 min
 Delta R.T.: 0.013 min
 Response: 46204
 Conc: 16.40 ng/ml

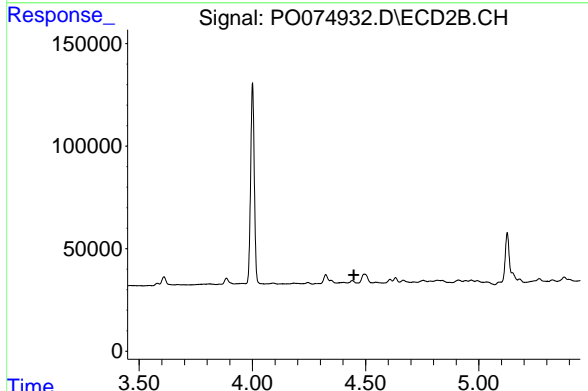


#10 AR-1221-3
 R.T.: 0.000 min
 Exp R.T. : 4.449 min
 Response: 0
 Conc: N.D.

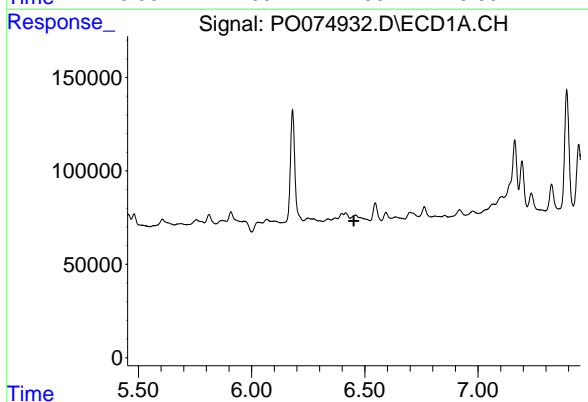


#11 AR-1232-1
 R.T.: 5.381 min
 Delta R.T.: 0.013 min
 Response: 46204
 Conc: 20.17 ng/ml

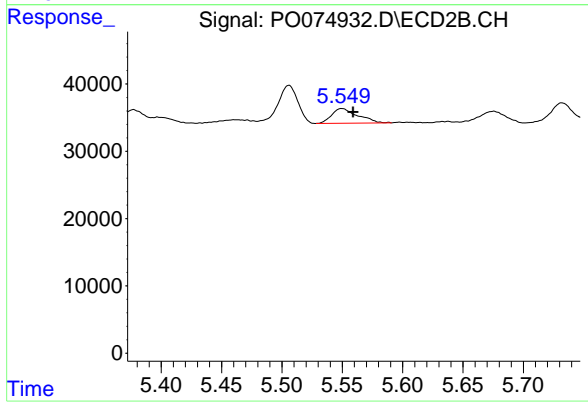
Instrument :
 ECD_O
 ClientSampled :



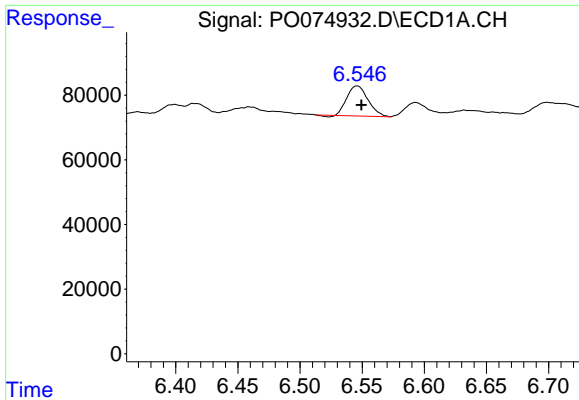
#11 AR-1232-1
 R.T.: 0.000 min
 Exp R.T. : 4.448 min
 Response: 0
 Conc: N.D.



#14 AR-1232-4
 R.T.: 0.000 min
 Exp R.T. : 6.451 min
 Response: 0
 Conc: N.D.



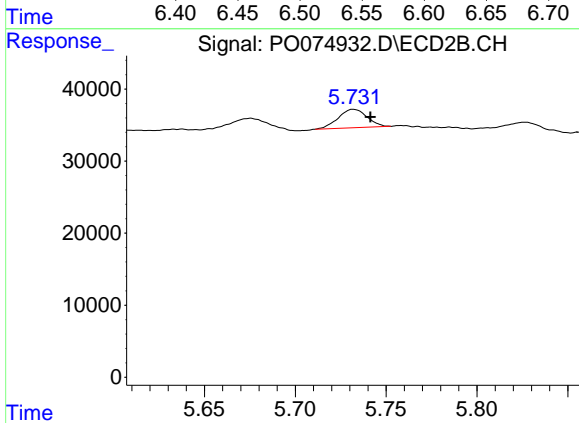
#14 AR-1232-4
 R.T.: 5.550 min
 Delta R.T.: -0.009 min
 Response: 32560
 Conc: 51.20 ng/ml



#15 AR-1232-5

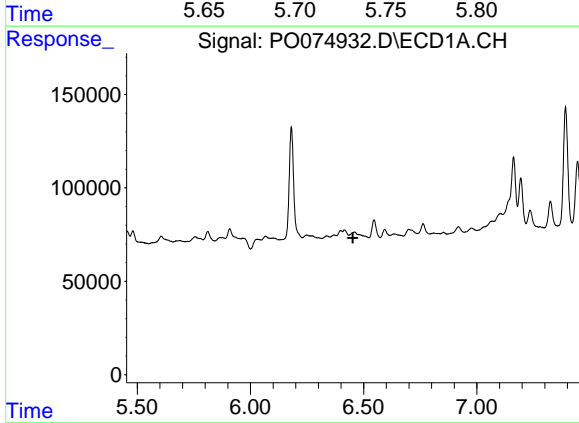
R.T.: 6.546 min
 Delta R.T.: -0.003 min
 Response: 108960
 Conc: 133.91 ng/ml

Instrument :
 ECD_O
 ClientSampled :



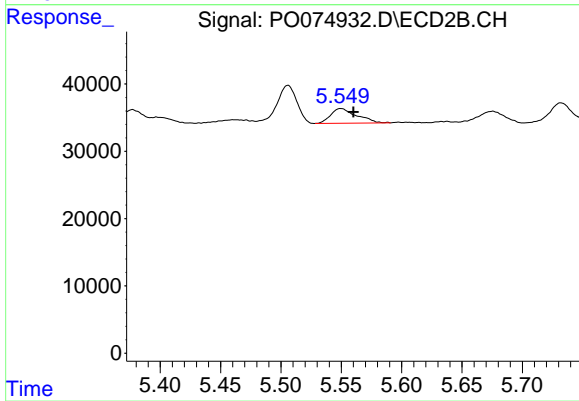
#15 AR-1232-5

R.T.: 5.732 min
 Delta R.T.: -0.009 min
 Response: 28082
 Conc: 40.44 ng/ml



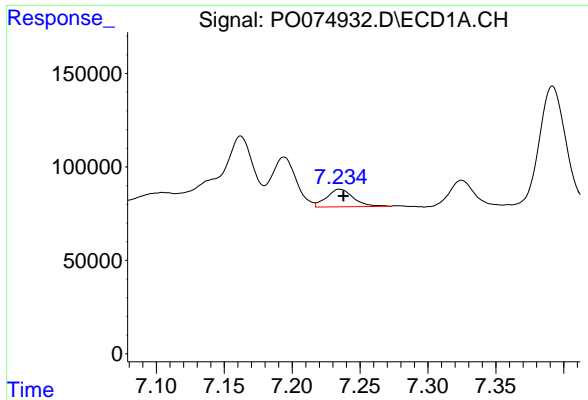
#19 AR-1242-4

R.T.: 0.000 min
 Exp R.T. : 6.453 min
 Response: 0
 Conc: N.D.



#19 AR-1242-4

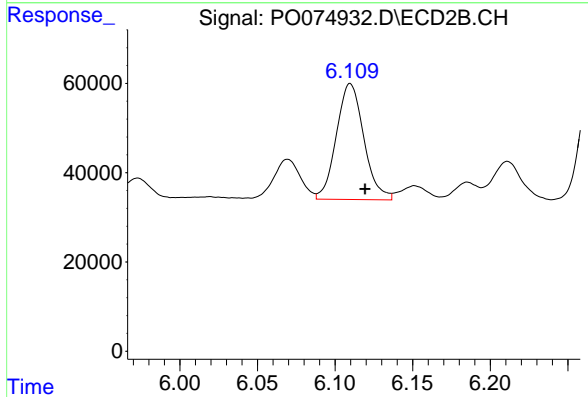
R.T.: 5.550 min
 Delta R.T.: -0.010 min
 Response: 32560
 Conc: 24.91 ng/ml



#20 AR-1242-5

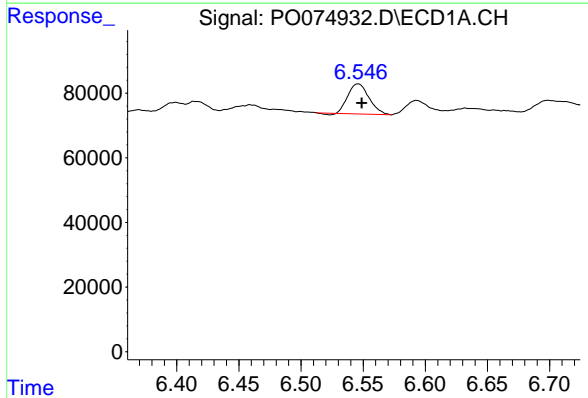
R.T.: 7.235 min
 Delta R.T.: -0.003 min
 Response: 128314
 Conc: 50.99 ng/ml

Instrument :
 ECD_O
 ClientSampleId :



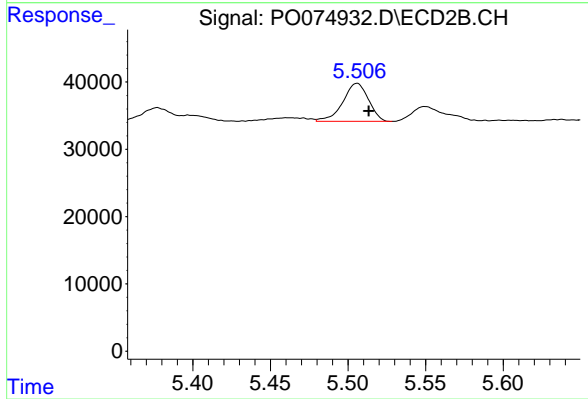
#20 AR-1242-5

R.T.: 6.110 min
 Delta R.T.: -0.009 min
 Response: 320214
 Conc: 182.89 ng/ml



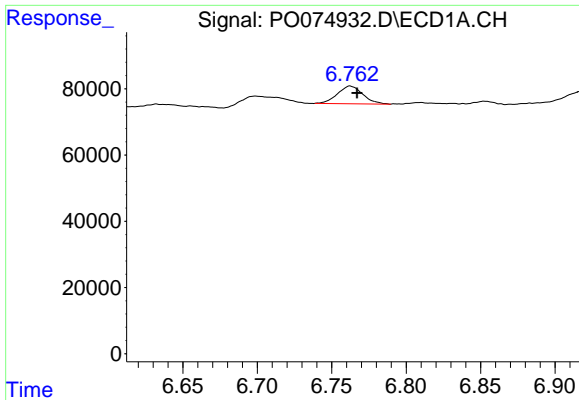
#22 AR-1248-2

R.T.: 6.546 min
 Delta R.T.: -0.003 min
 Response: 108960
 Conc: 35.03 ng/ml



#22 AR-1248-2

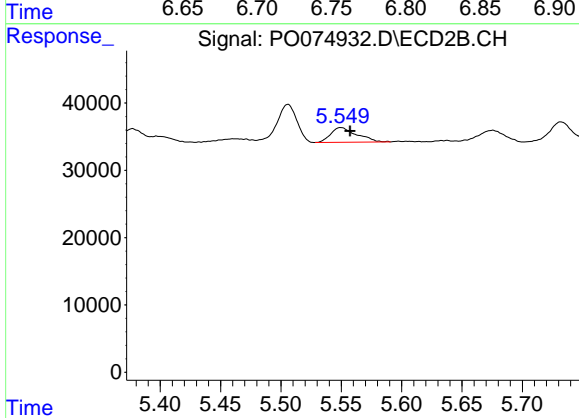
R.T.: 5.506 min
 Delta R.T.: -0.008 min
 Response: 65193
 Conc: 34.69 ng/ml



#23 AR-1248-3

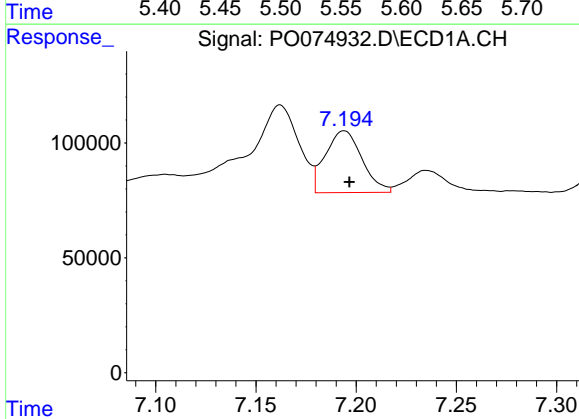
R.T.: 6.762 min
 Delta R.T.: -0.005 min
 Response: 63549
 Conc: 17.55 ng/ml

Instrument :
 ECD_O
 ClientSampled :



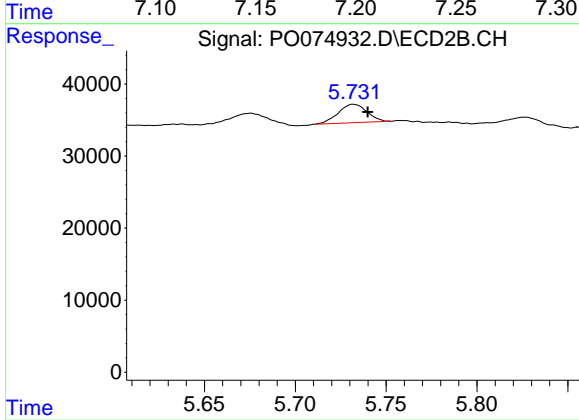
#23 AR-1248-3

R.T.: 5.550 min
 Delta R.T.: -0.007 min
 Response: 32560
 Conc: 17.25 ng/ml



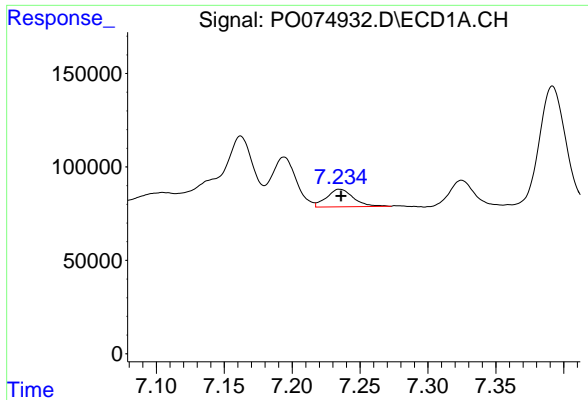
#24 AR-1248-4

R.T.: 7.194 min
 Delta R.T.: -0.003 min
 Response: 342808
 Conc: 76.87 ng/ml



#24 AR-1248-4

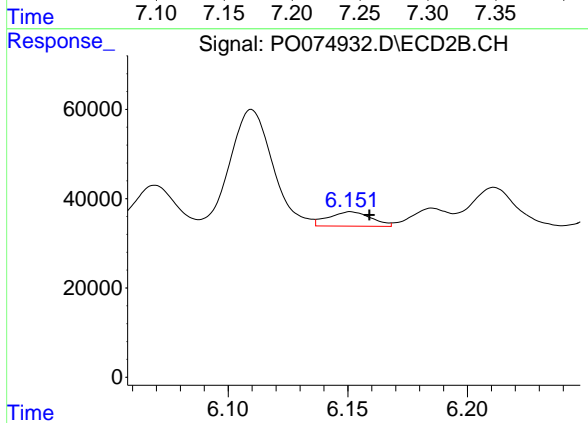
R.T.: 5.732 min
 Delta R.T.: -0.008 min
 Response: 28082
 Conc: 12.47 ng/ml



#25 AR-1248-5

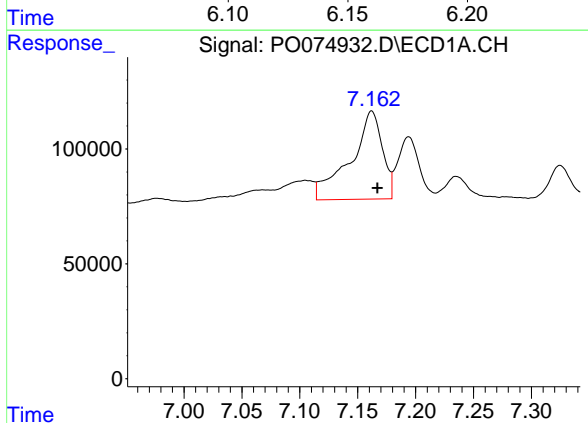
R.T.: 7.235 min
 Delta R.T.: -0.001 min
 Response: 128314
 Conc: 30.45 ng/ml

Instrument :
 ECD_O
 ClientSampleId :



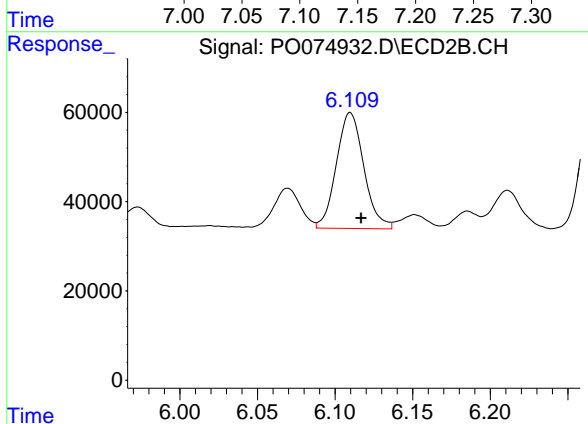
#25 AR-1248-5

R.T.: 6.151 min
 Delta R.T.: -0.008 min
 Response: 40137
 Conc: 17.07 ng/ml



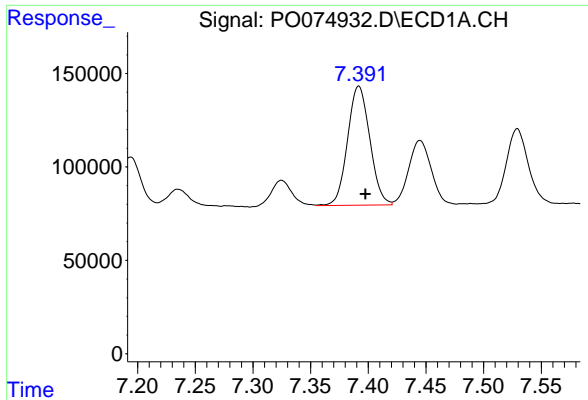
#26 AR-1254-1

R.T.: 7.162 min
 Delta R.T.: -0.005 min
 Response: 737626
 Conc: 167.71 ng/ml



#26 AR-1254-1

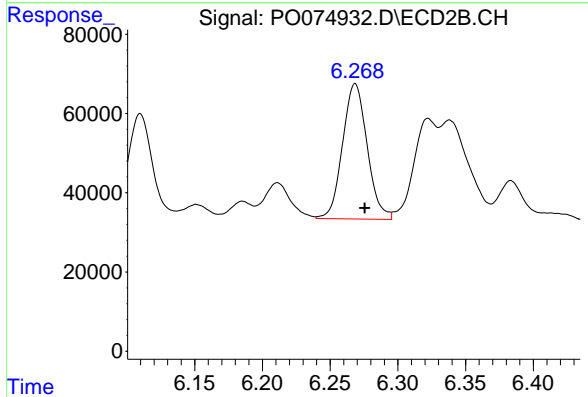
R.T.: 6.110 min
 Delta R.T.: -0.007 min
 Response: 320214
 Conc: 88.65 ng/ml



#27 AR-1254-2

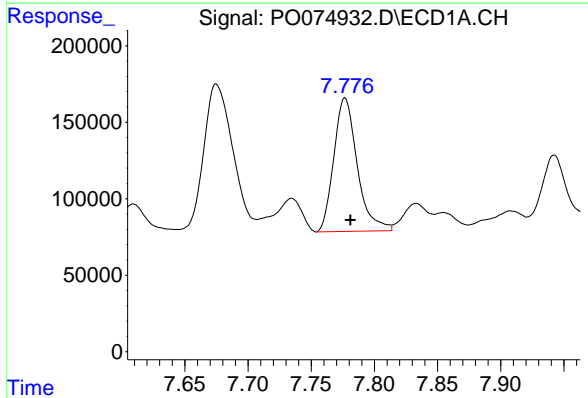
R.T.: 7.392 min
 Delta R.T.: -0.006 min
 Response: 852996
 Conc: 125.24 ng/ml

Instrument :
 ECD_O
 ClientSampleId :



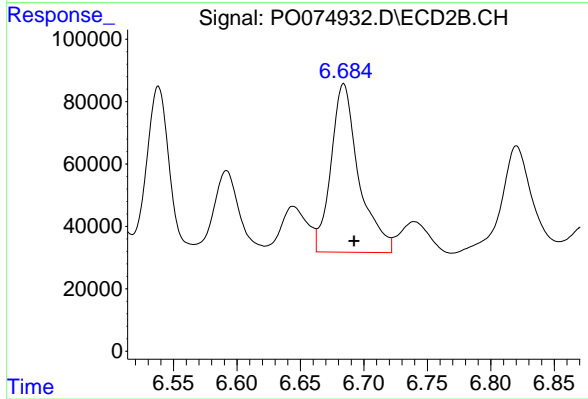
#27 AR-1254-2

R.T.: 6.269 min
 Delta R.T.: -0.007 min
 Response: 432593
 Conc: 138.81 ng/ml



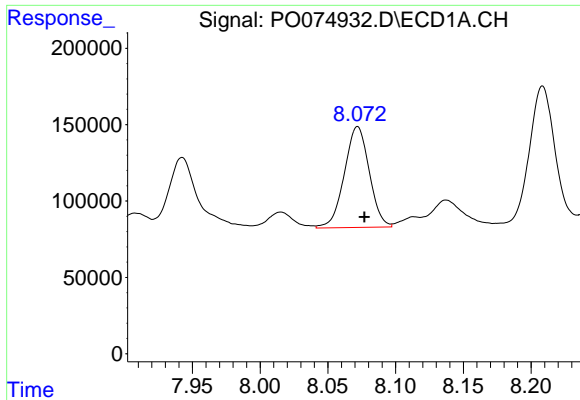
#28 AR-1254-3

R.T.: 7.777 min
 Delta R.T.: -0.004 min
 Response: 1125047
 Conc: 160.39 ng/ml



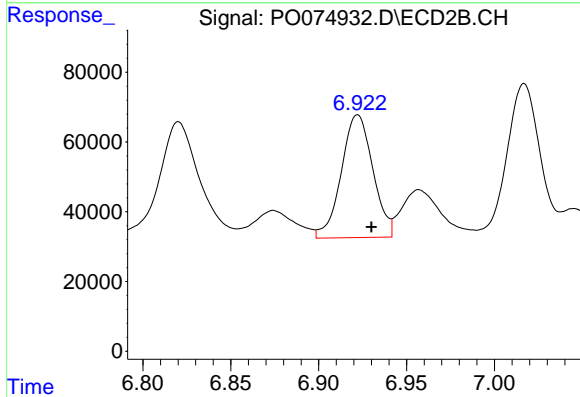
#28 AR-1254-3

R.T.: 6.684 min
 Delta R.T.: -0.008 min
 Response: 824120
 Conc: 168.05 ng/ml

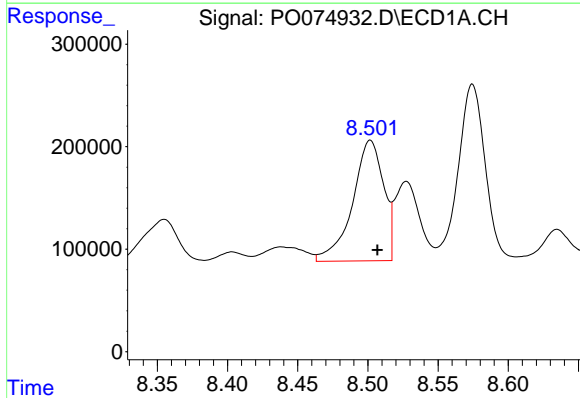


#29 AR-1254-4
 R.T.: 8.072 min
 Delta R.T.: -0.005 min
 Response: 843991
 Conc: 139.17 ng/ml

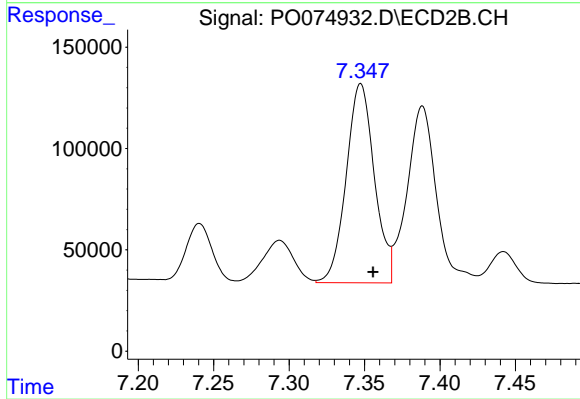
Instrument :
 ECD_O
 ClientSampleId :



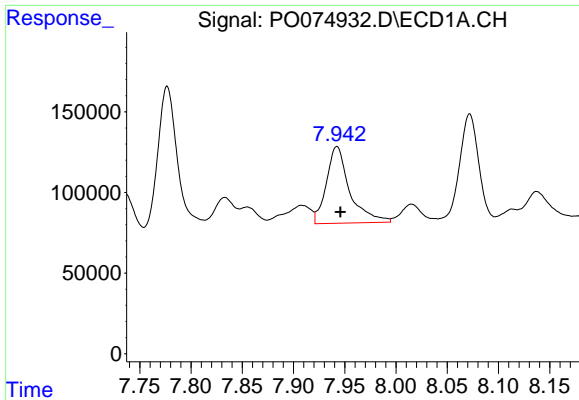
#29 AR-1254-4
 R.T.: 6.922 min
 Delta R.T.: -0.008 min
 Response: 439752
 Conc: 126.81 ng/ml



#30 AR-1254-5
 R.T.: 8.502 min
 Delta R.T.: -0.005 min
 Response: 1809151
 Conc: 311.44 ng/ml



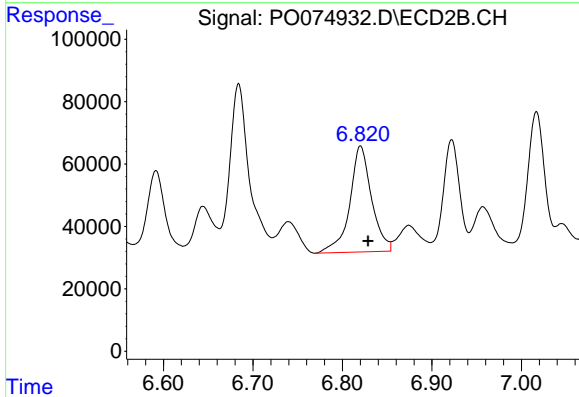
#30 AR-1254-5
 R.T.: 7.348 min
 Delta R.T.: -0.008 min
 Response: 1276021
 Conc: 281.93 ng/ml



#31 AR-1260-1

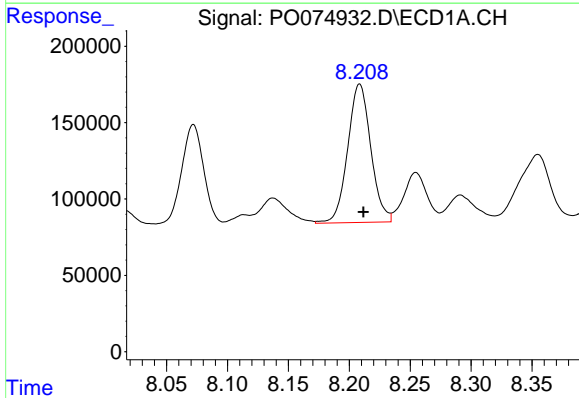
R.T.: 7.942 min
 Delta R.T.: -0.003 min
 Response: 752318
 Conc: 150.80 ng/ml

Instrument :
 ECD_O
 ClientSampled :



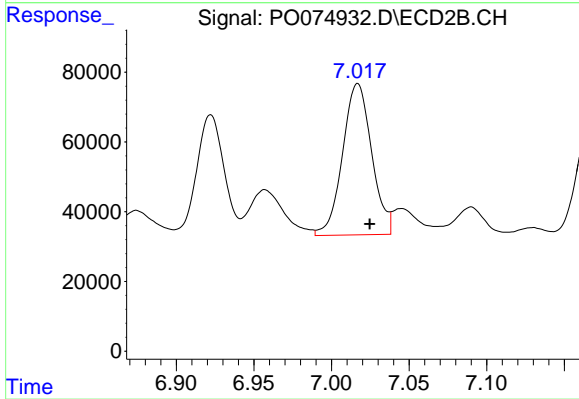
#31 AR-1260-1

R.T.: 6.820 min
 Delta R.T.: -0.009 min
 Response: 576296
 Conc: 180.64 ng/ml



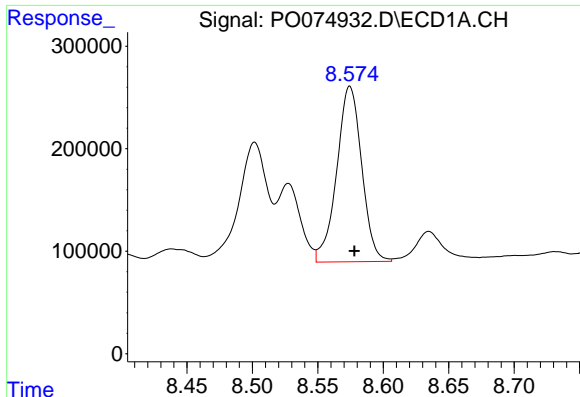
#32 AR-1260-2

R.T.: 8.209 min
 Delta R.T.: -0.003 min
 Response: 1198056
 Conc: 176.13 ng/ml



#32 AR-1260-2

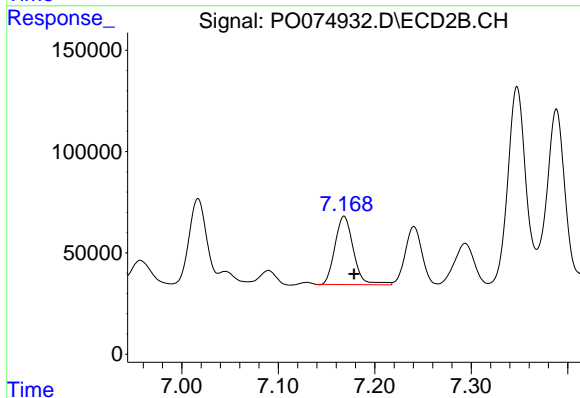
R.T.: 7.017 min
 Delta R.T.: -0.008 min
 Response: 566498
 Conc: 133.26 ng/ml



#33 AR-1260-3

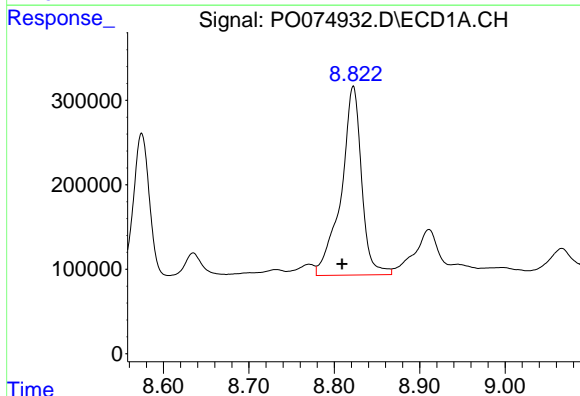
R.T.: 8.574 min
 Delta R.T.: -0.003 min
 Response: 2277452
 Conc: 397.34 ng/ml

Instrument :
 ECD_O
 ClientSampled :



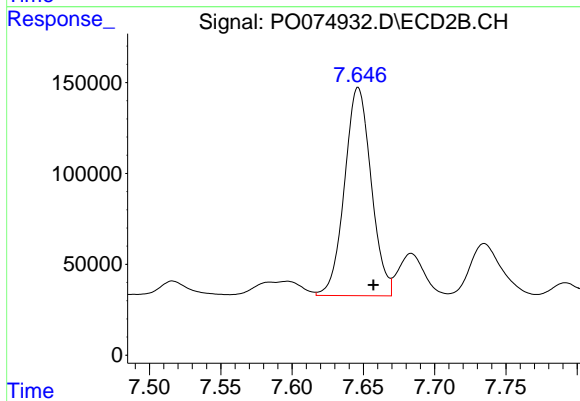
#33 AR-1260-3

R.T.: 7.168 min
 Delta R.T.: -0.010 min
 Response: 447129
 Conc: 124.08 ng/ml



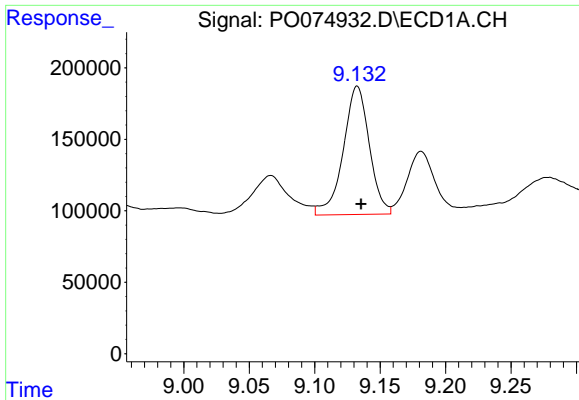
#34 AR-1260-4

R.T.: 8.822 min
 Delta R.T.: 0.013 min
 Response: 3725089
 Conc: 680.84 ng/ml



#34 AR-1260-4

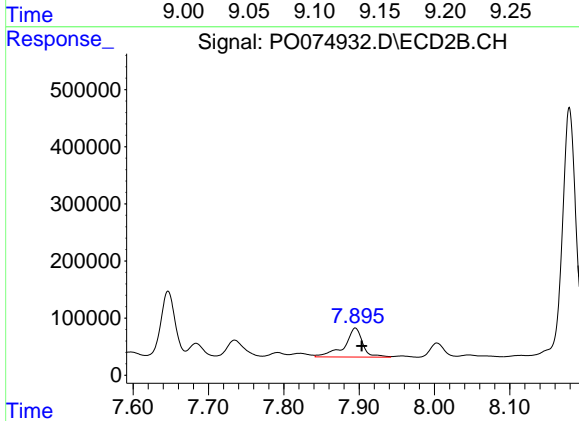
R.T.: 7.646 min
 Delta R.T.: -0.011 min
 Response: 1490212
 Conc: 475.91 ng/ml



#35 AR-1260-5

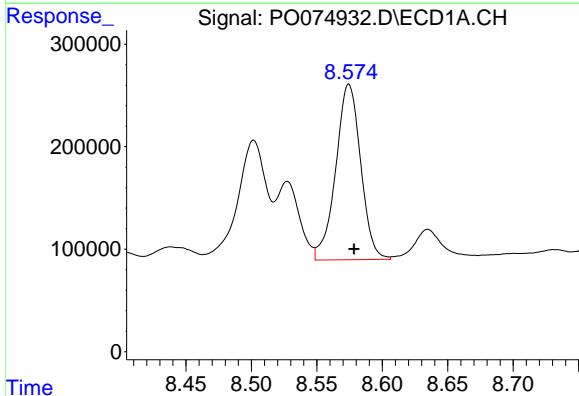
R.T.: 9.133 min
 Delta R.T.: -0.003 min
 Response: 1247687
 Conc: 99.86 ng/ml

Instrument :
 ECD_O
 ClientSampleId :



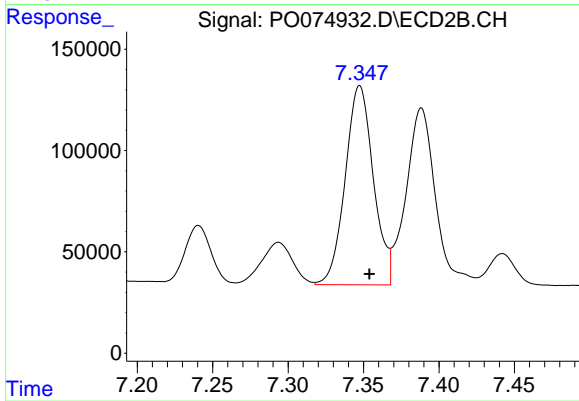
#35 AR-1260-5

R.T.: 7.895 min
 Delta R.T.: -0.008 min
 Response: 856615
 Conc: 107.77 ng/ml



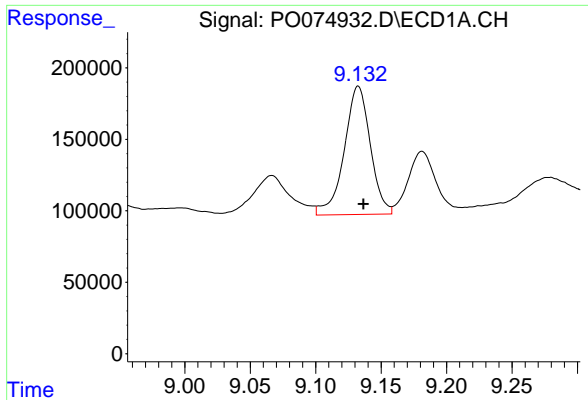
#36 AR-1262-1

R.T.: 8.574 min
 Delta R.T.: -0.004 min
 Response: 2277452
 Conc: 255.77 ng/ml



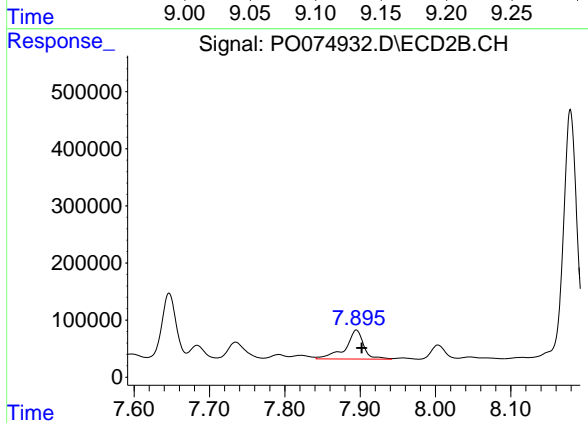
#36 AR-1262-1

R.T.: 7.348 min
 Delta R.T.: -0.007 min
 Response: 1276021
 Conc: 501.47 ng/ml

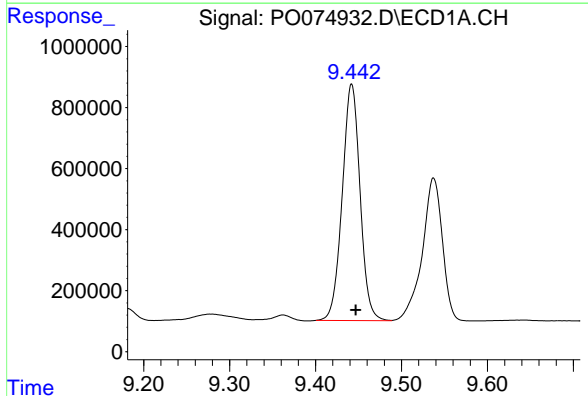


#37 AR-1262-2
 R.T.: 9.133 min
 Delta R.T.: -0.004 min
 Response: 1247687
 Conc: 81.49 ng/ml

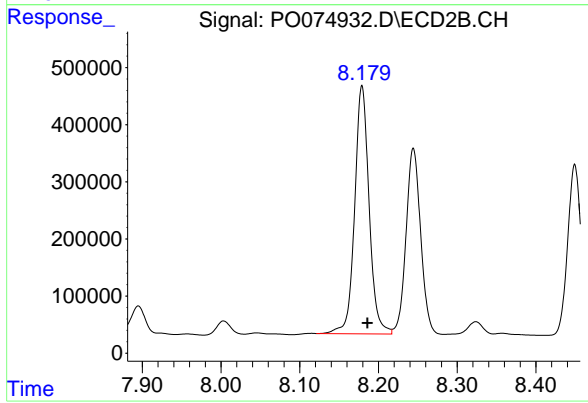
Instrument :
 ECD_O
 ClientSampled :



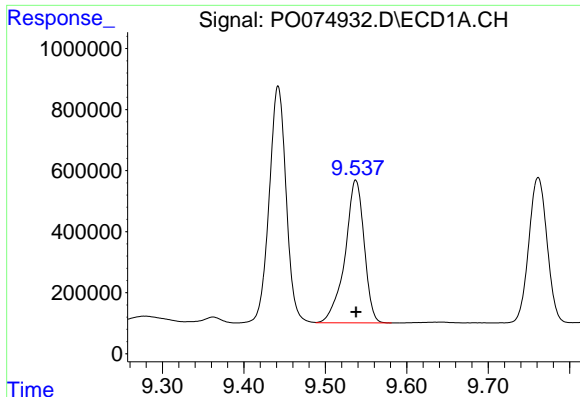
#37 AR-1262-2
 R.T.: 7.895 min
 Delta R.T.: -0.007 min
 Response: 856615
 Conc: 93.17 ng/ml



#38 AR-1262-3
 R.T.: 9.442 min
 Delta R.T.: -0.005 min
 Response: 11174172
 Conc: 1115.66 ng/ml



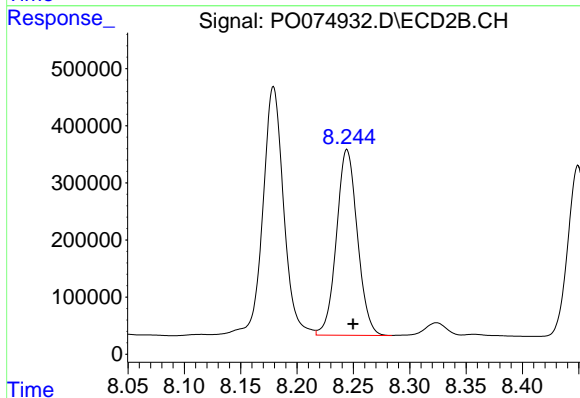
#38 AR-1262-3
 R.T.: 8.179 min
 Delta R.T.: -0.007 min
 Response: 5558470
 Conc: 1405.67 ng/ml



#39 AR-1262-4

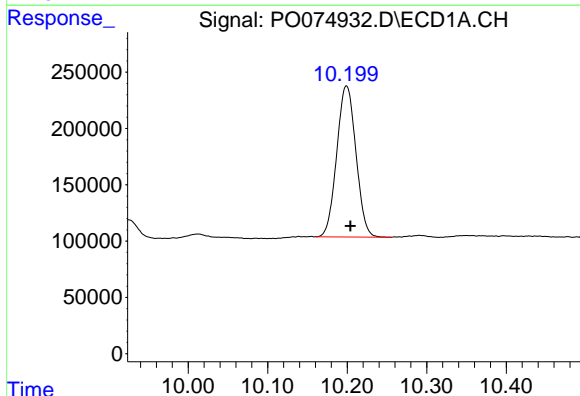
R.T.: 9.537 min
 Delta R.T.: 0.000 min
 Response: 7623458
 Conc: 1023.65 ng/ml

Instrument :
 ECD_O
 ClientSampleId :



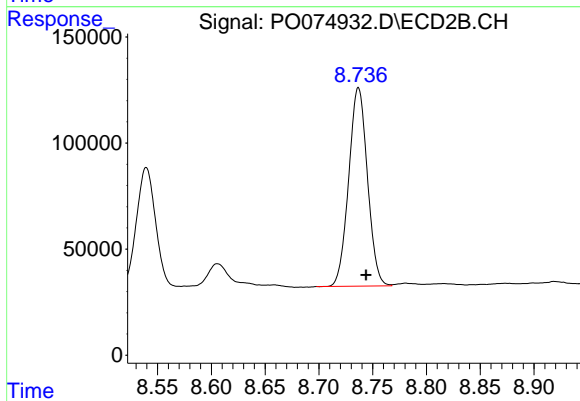
#39 AR-1262-4

R.T.: 8.244 min
 Delta R.T.: -0.005 min
 Response: 4206671
 Conc: 634.95 ng/ml



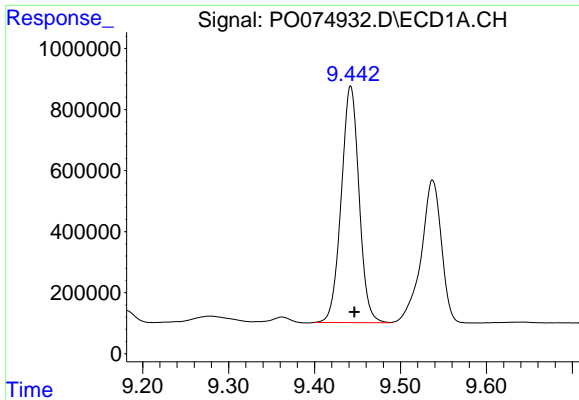
#40 AR-1262-5

R.T.: 10.199 min
 Delta R.T.: -0.005 min
 Response: 2248241
 Conc: 429.74 ng/ml



#40 AR-1262-5

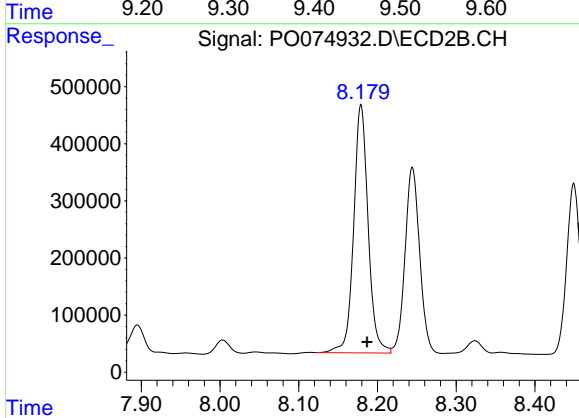
R.T.: 8.737 min
 Delta R.T.: -0.007 min
 Response: 1134423
 Conc: 367.43 ng/ml



#41 AR-1268-1

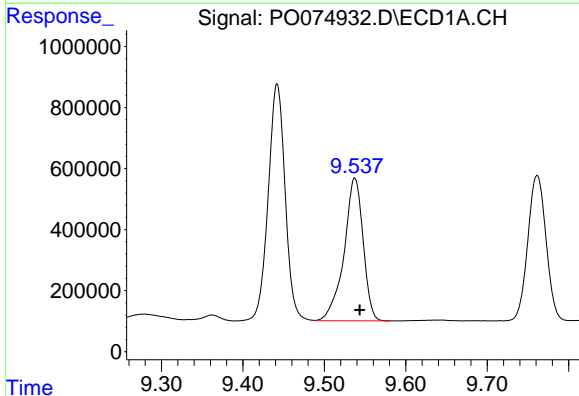
R.T.: 9.442 min
 Delta R.T.: -0.004 min
 Response: 11174172
 Conc: 598.08 ng/ml

Instrument :
 ECD_O
 ClientSampled :



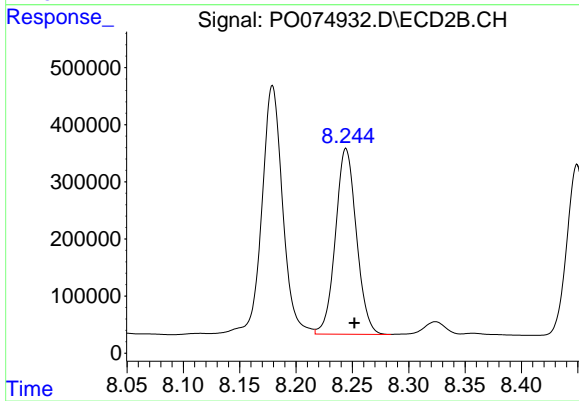
#41 AR-1268-1

R.T.: 8.179 min
 Delta R.T.: -0.008 min
 Response: 5558470
 Conc: 496.52 ng/ml



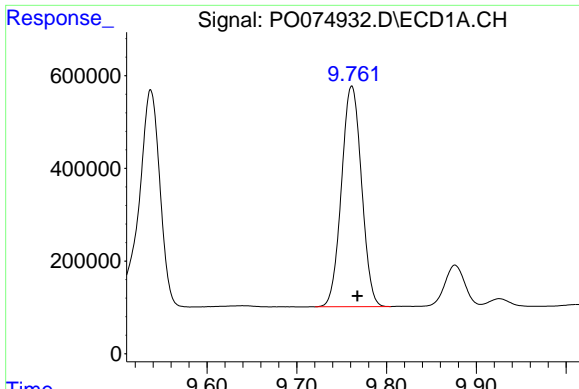
#42 AR-1268-2

R.T.: 9.537 min
 Delta R.T.: -0.006 min
 Response: 7623458
 Conc: 477.81 ng/ml



#42 AR-1268-2

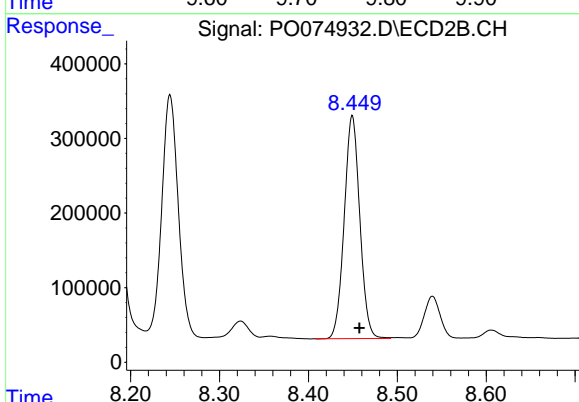
R.T.: 8.244 min
 Delta R.T.: -0.008 min
 Response: 4206671
 Conc: 439.70 ng/ml



#43 AR-1268-3

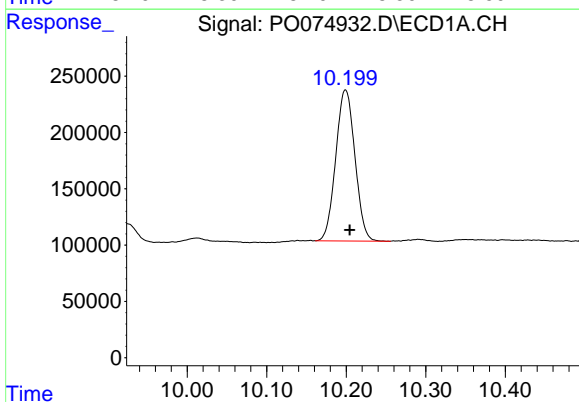
R.T.: 9.761 min
 Delta R.T.: -0.006 min
 Response: 7389679
 Conc: 520.33 ng/ml

Instrument :
 ECD_O
 ClientSampled :



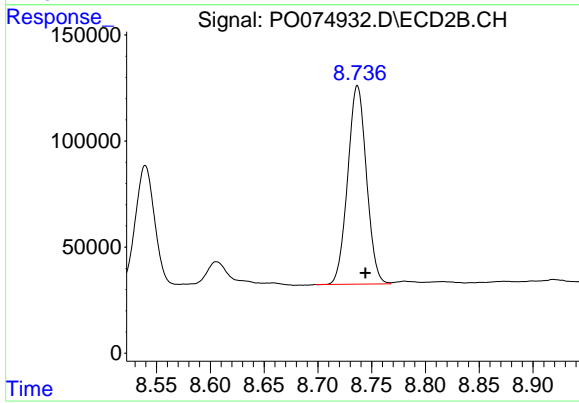
#43 AR-1268-3

R.T.: 8.449 min
 Delta R.T.: -0.008 min
 Response: 3640831
 Conc: 438.19 ng/ml



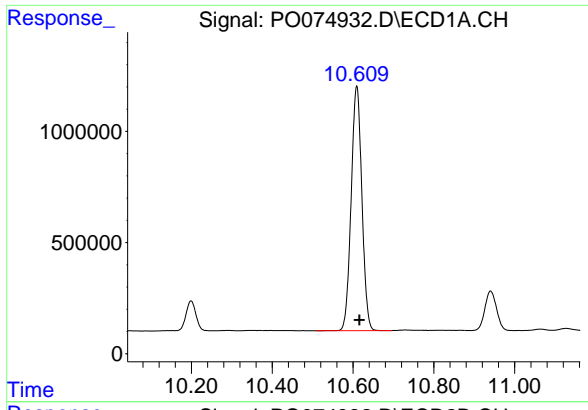
#44 AR-1268-4

R.T.: 10.199 min
 Delta R.T.: -0.005 min
 Response: 2248241
 Conc: 383.75 ng/ml



#44 AR-1268-4

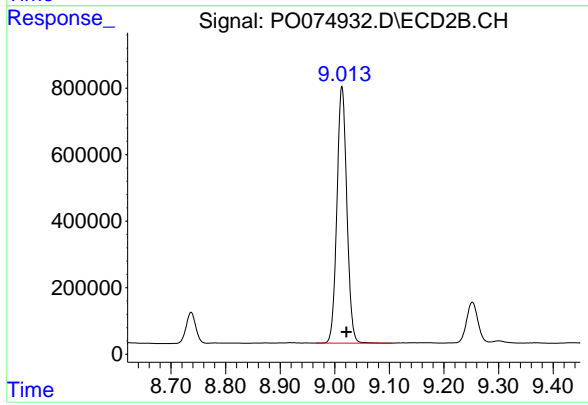
R.T.: 8.737 min
 Delta R.T.: -0.007 min
 Response: 1134423
 Conc: 327.00 ng/ml



#45 AR-1268-5

R.T.: 10.609 min
Delta R.T.: -0.006 min
Response: 20234321
Conc: 484.21 ng/ml

Instrument :
ECD_O
ClientSampleId :



#45 AR-1268-5

R.T.: 9.013 min
Delta R.T.: -0.008 min
Response: 9744350
Conc: 411.52 ng/ml