

Data Path : Z:\pestpcbsrv\HPCHEM1\ECD\_0\Data\P0011921\  
 Data File : P0074958.D  
 Signal(s) : Signal #1: ECD1A.CH Signal #2: ECD2B.CH  
 Acq On : 19 Jan 2021 19:18  
 Operator : AJ/MA  
 Sample : M1110-13  
 Misc :  
 ALS Vial : 32 Sample Multiplier: 1

Instrument :  
 ECD\_0  
 ClientSampled :  
 S17-06-C

Integration File signal 1: autoint1.e  
 Integration File signal 2: autoint2.e  
 Quant Time: Jan 20 03:53:04 2021  
 Quant Method : Z:\pestpcbsrv\HPCHEM1\ECD\_0\methods\P0011121.M  
 Quant Title : GC EXTRACTABLES  
 QLast Update : Tue Jan 12 06:02:45 2021  
 Response via : Initial Calibration  
 Integrator: ChemStation 6890 Scale Mode: Small noise peaks clipped

Volume Inj. : 2 µl  
 Signal #1 Phase : ZB-MR1 Signal #2 Phase: ZB-MR2  
 Signal #1 Info : 30Mx0.32mmx 0.50µ Signal #2 Info : 30M x 0.32mm x 0.25µm

	Compound	RT#1	RT#2	Resp#1	Resp#2	ng/ml	ng/ml
-----							
System Monitoring Compounds							
1)	SA Tetrachlo...	4.927	4.001	1552153	908817	14.710	16.156
2)	SA Decachlor...	10.942	9.252	1746272	798707	17.206	14.547
Target Compounds							
6)	L1 AR-1016-4	0.000	5.505	0	35369	N.D.	25.166 #
8)	L2 AR-1221-1	5.181	4.245f	107675	268273	87.662	377.573 #
9)	L2 AR-1221-2	0.000	4.349	0	28732	N.D.	53.762 #
10)	L2 AR-1221-3	5.379	4.441	664042	350744	235.703	219.353
11)	L3 AR-1232-1	5.379	4.441	664042	350744	289.943	267.578
15)	L3 AR-1232-5	6.542	0.000	89502	0	110.000	N.D. #
20)	L4 AR-1242-5	0.000	6.110	0	218501	N.D.	124.798 #
22)	L5 AR-1248-2	6.542	5.505	89502	35369	28.778	18.820 #
24)	L5 AR-1248-4	7.194	0.000	394857	0	88.543	N.D. #
25)	L5 AR-1248-5	0.000	6.143f	0	53224	N.D.	22.639 #
26)	L6 AR-1254-1	7.165	6.110	337141	218501	76.655	60.493
27)	L6 AR-1254-2	7.394	6.267	567438	173311	83.315	55.610 #
28)	L6 AR-1254-3	7.776	6.684	499949	358694	71.275	73.144
29)	L6 AR-1254-4	8.072	6.922	280607	127771	46.269	36.845
30)	L6 AR-1254-5	8.502	7.347	715416	469559	123.158	103.748
31)	L7 AR-1260-1	7.942	6.820	358477	280501	71.857	87.924
32)	L7 AR-1260-2	8.208	7.017	690913	265236	101.573	62.393 #
33)	L7 AR-1260-3	8.575	7.168	823594	235256	143.690	65.286 #
34)	L7 AR-1260-4	8.821	7.647	1486865	593786	271.757	189.628 #
35)	L7 AR-1260-5	9.133	7.895	773698	425771	61.921	53.565
36)	L8 AR-1262-1	8.575	7.347	823594	469559	92.495	184.533 #
37)	L8 AR-1262-2	9.133	7.895	773698	425771	50.535	46.308
38)	L8 AR-1262-3	9.442	8.179	4012771	1703863	400.644	430.887
39)	L8 AR-1262-4	9.539	8.244	2601735	1293690	349.351	195.268 #
40)	L8 AR-1262-5	10.200	8.737	609752	312708	116.552	101.284
41)	L9 AR-1268-1	9.442	8.179	4012771	1703863	214.777	152.202 #
42)	L9 AR-1268-2	9.539	8.244	2601735	1293690	163.068	135.221
43)	L9 AR-1268-3	9.762	8.449	2557362	1164201	180.071	140.116
44)	L9 AR-1268-4	10.200	8.737	609752	312708	104.079	90.140
45)	L9 AR-1268-5	10.610	9.014	6450658	2839317	154.365	119.909
-----							

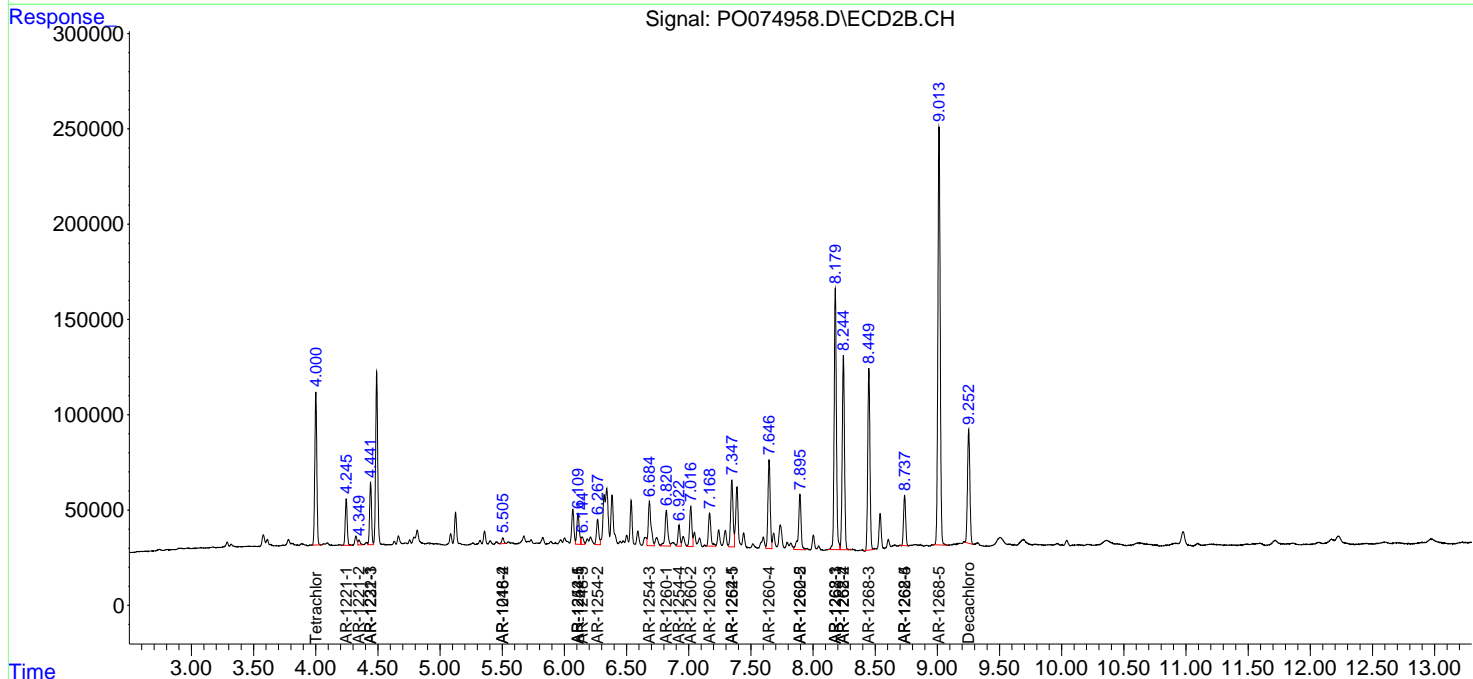
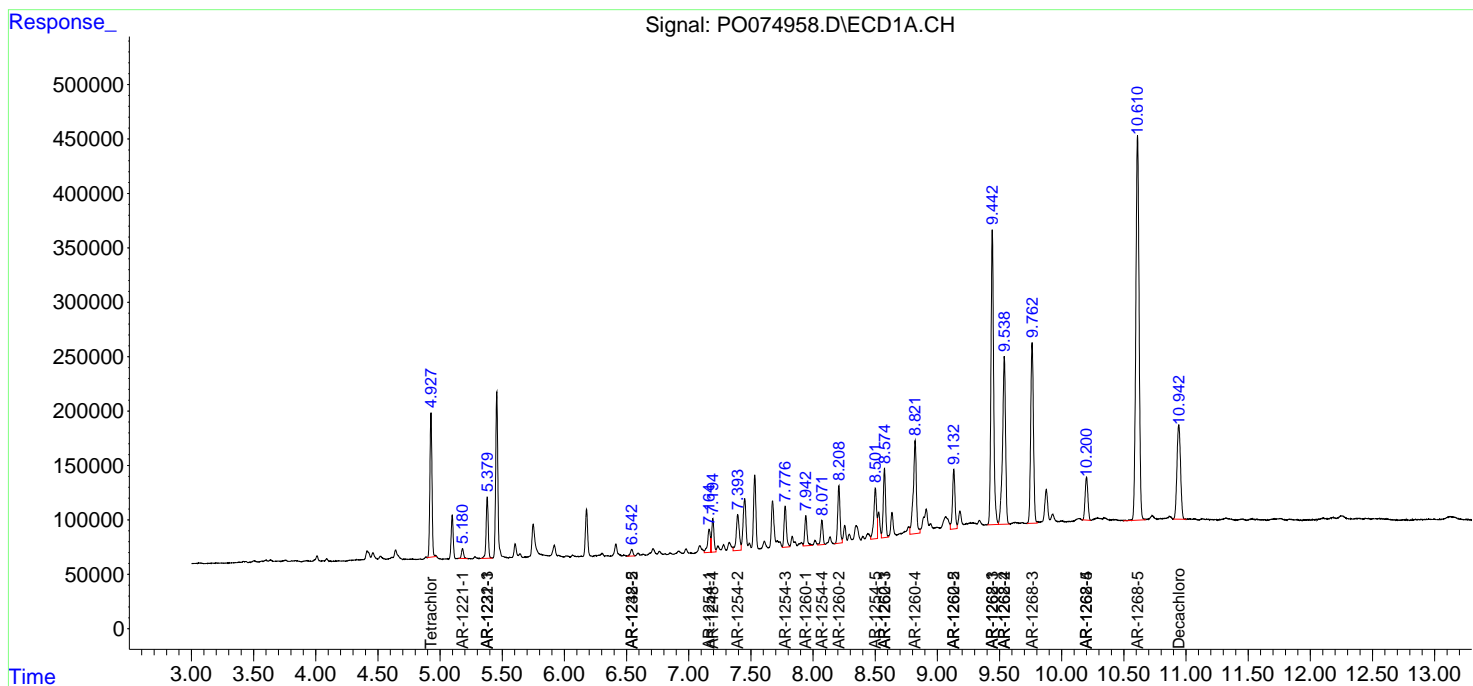
(f)=RT Delta > 1/2 Window (#)=Amounts differ by > 25% (m)=manual int.

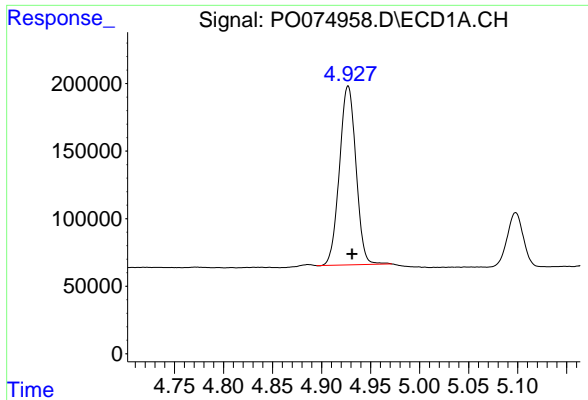
Data Path : Z:\pestpcbsrv\HPCHEM1\ECD\_0\Data\P0011921\  
 Data File : P0074958.D  
 Signal(s) : Signal #1: ECD1A.CH Signal #2: ECD2B.CH  
 Acq On : 19 Jan 2021 19:18  
 Operator : AJ/MA  
 Sample : M1110-13  
 Misc :  
 ALS Vial : 32 Sample Multiplier: 1

Instrument :  
 ECD\_O  
 ClientSampled :  
 S17-06-C

Integration File signal 1: autoint1.e  
 Integration File signal 2: autoint2.e  
 Quant Time: Jan 20 03:53:04 2021  
 Quant Method : Z:\pestpcbsrv\HPCHEM1\ECD\_0\methods\P0011121.M  
 Quant Title : GC EXTRACTABLES  
 QLast Update : Tue Jan 12 06:02:45 2021  
 Response via : Initial Calibration  
 Integrator: ChemStation 6890 Scale Mode: Small noise peaks clipped

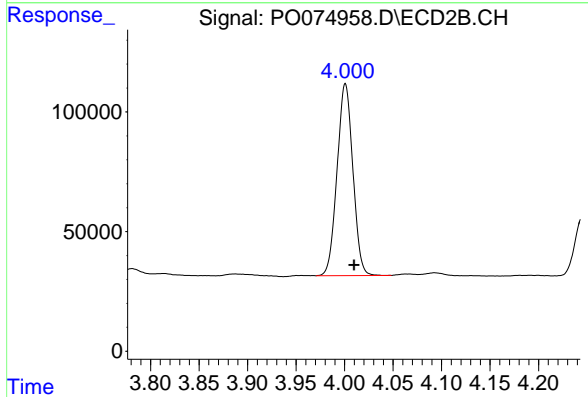
Volume Inj. : 2 µl  
 Signal #1 Phase : ZB-MR1 Signal #2 Phase: ZB-MR2  
 Signal #1 Info : 30Mx0.32mmx 0.50µ Signal #2 Info : 30M x 0.32mm x 0.25µm



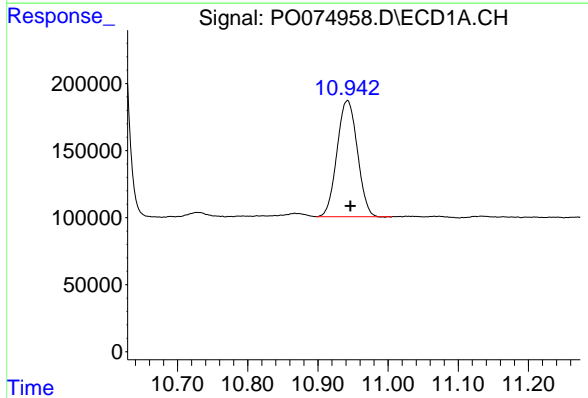


#1 Tetrachloro-m-xylene  
 R.T.: 4.927 min  
 Delta R.T.: -0.004 min  
 Response: 1552153  
 Conc: 14.71 ng/ml

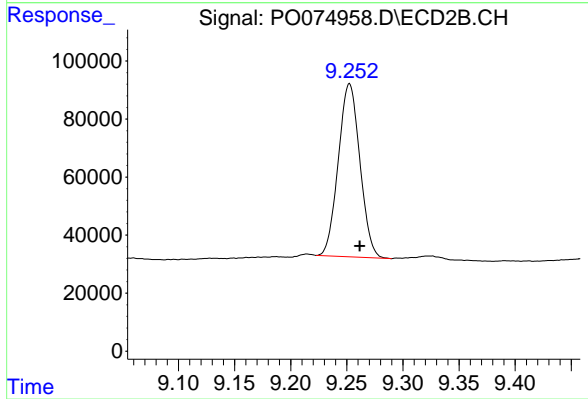
Instrument :  
 ECD\_O  
 ClientSampleId :  
 S17-06-C



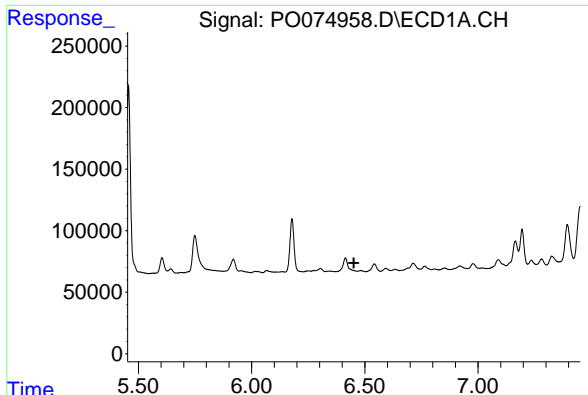
#1 Tetrachloro-m-xylene  
 R.T.: 4.001 min  
 Delta R.T.: -0.009 min  
 Response: 908817  
 Conc: 16.16 ng/ml



#2 Decachlorobiphenyl  
 R.T.: 10.942 min  
 Delta R.T.: -0.004 min  
 Response: 1746272  
 Conc: 17.21 ng/ml



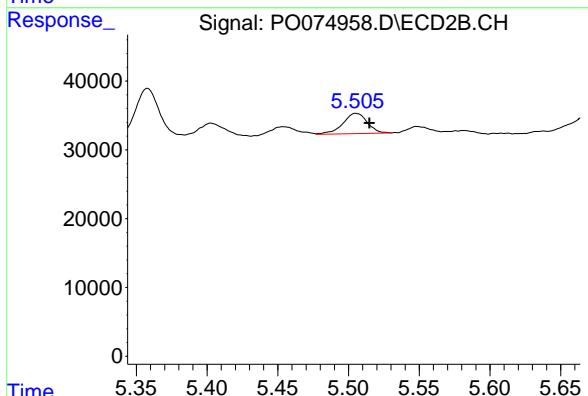
#2 Decachlorobiphenyl  
 R.T.: 9.252 min  
 Delta R.T.: -0.009 min  
 Response: 798707  
 Conc: 14.55 ng/ml



#6 AR-1016-4

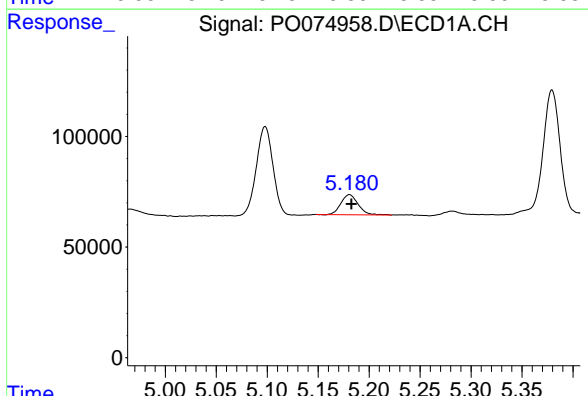
R.T.: 0.000 min  
 Exp R.T.: 6.452 min  
 Response: 0  
 Conc: N.D.

Instrument :  
 ECD\_O  
 ClientSampleId :  
 S17-06-C



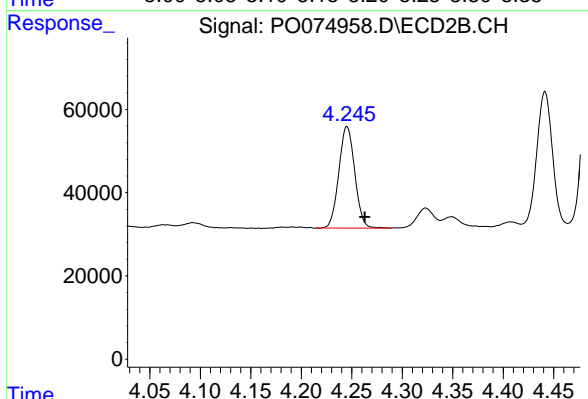
#6 AR-1016-4

R.T.: 5.505 min  
 Delta R.T.: -0.010 min  
 Response: 35369  
 Conc: 25.17 ng/ml



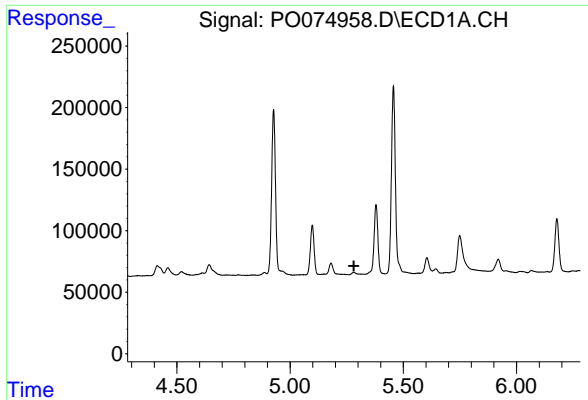
#8 AR-1221-1

R.T.: 5.181 min  
 Delta R.T.: -0.002 min  
 Response: 107675  
 Conc: 87.66 ng/ml



#8 AR-1221-1

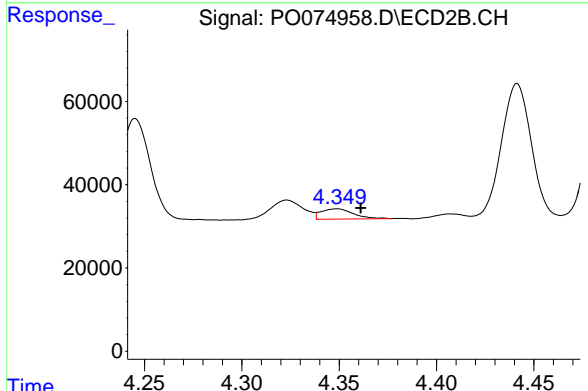
R.T.: 4.245 min  
 Delta R.T.: -0.018 min  
 Response: 268273  
 Conc: 377.57 ng/ml



#9 AR-1221-2

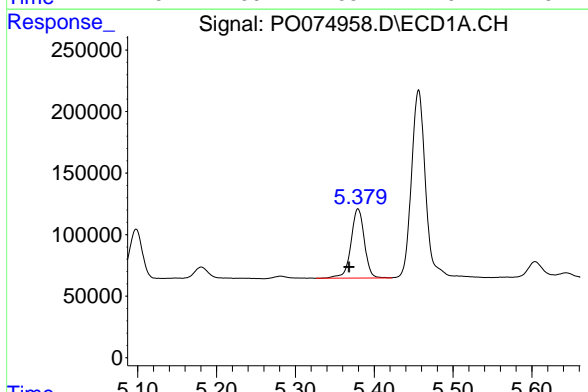
R.T.: 0.000 min  
 Exp R.T.: 5.282 min  
 Response: 0  
 Conc: N.D.

Instrument :  
 ECD\_O  
 ClientSampled :  
 S17-06-C



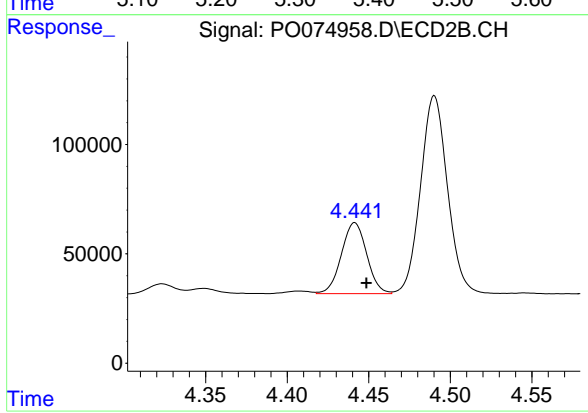
#9 AR-1221-2

R.T.: 4.349 min  
 Delta R.T.: -0.012 min  
 Response: 28732  
 Conc: 53.76 ng/ml



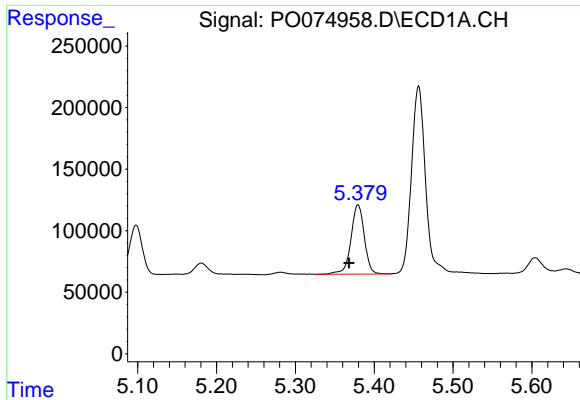
#10 AR-1221-3

R.T.: 5.379 min  
 Delta R.T.: 0.011 min  
 Response: 664042  
 Conc: 235.70 ng/ml



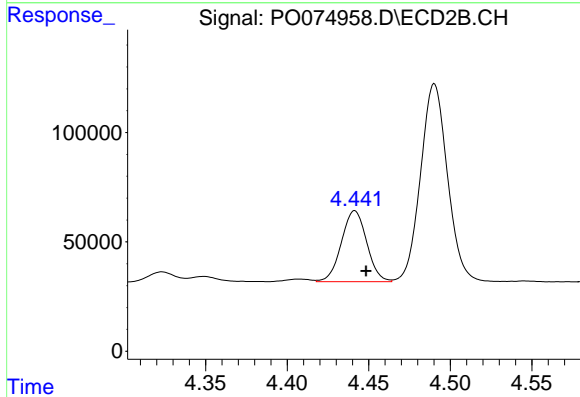
#10 AR-1221-3

R.T.: 4.441 min  
 Delta R.T.: -0.007 min  
 Response: 350744  
 Conc: 219.35 ng/ml

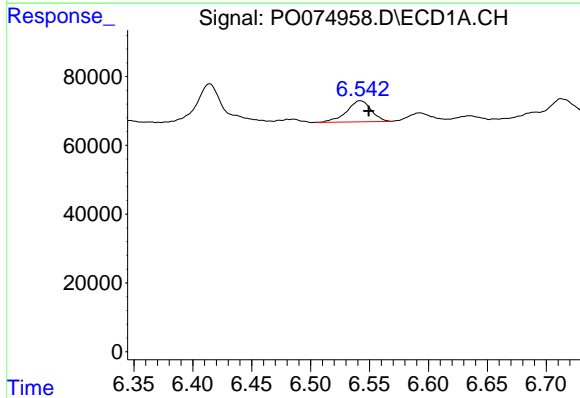


#11 AR-1232-1  
 R.T.: 5.379 min  
 Delta R.T.: 0.011 min  
 Response: 664042  
 Conc: 289.94 ng/ml

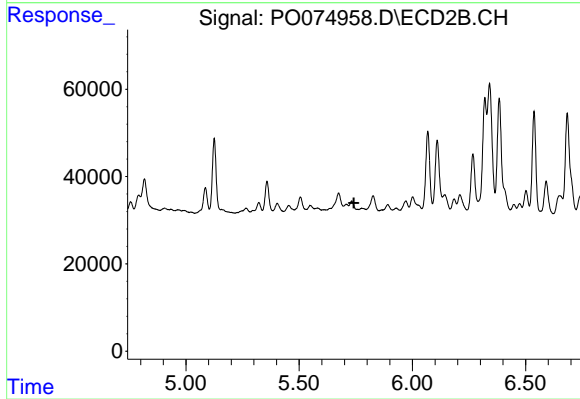
Instrument :  
 ECD\_O  
 ClientSampled :  
 S17-06-C



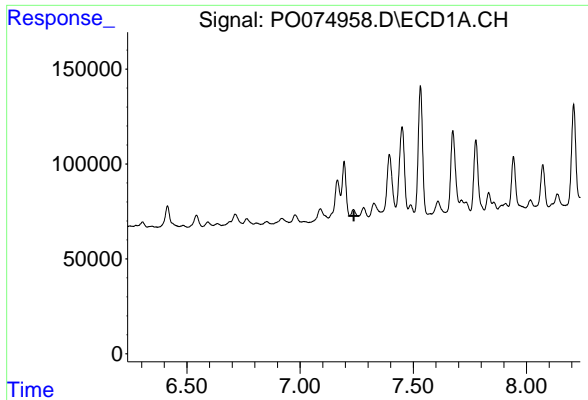
#11 AR-1232-1  
 R.T.: 4.441 min  
 Delta R.T.: -0.007 min  
 Response: 350744  
 Conc: 267.58 ng/ml



#15 AR-1232-5  
 R.T.: 6.542 min  
 Delta R.T.: -0.007 min  
 Response: 89502  
 Conc: 110.00 ng/ml



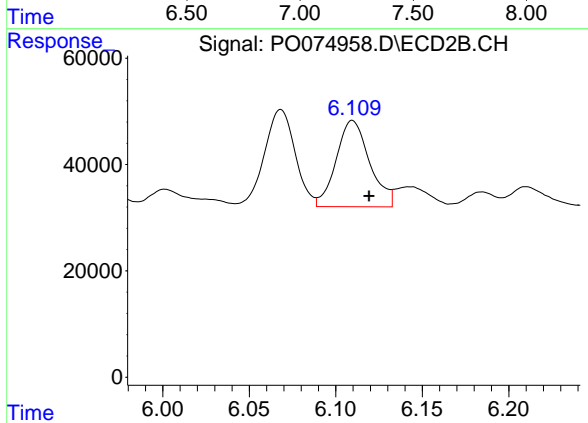
#15 AR-1232-5  
 R.T.: 0.000 min  
 Exp R.T.: 5.741 min  
 Response: 0  
 Conc: N.D.



#20 AR-1242-5

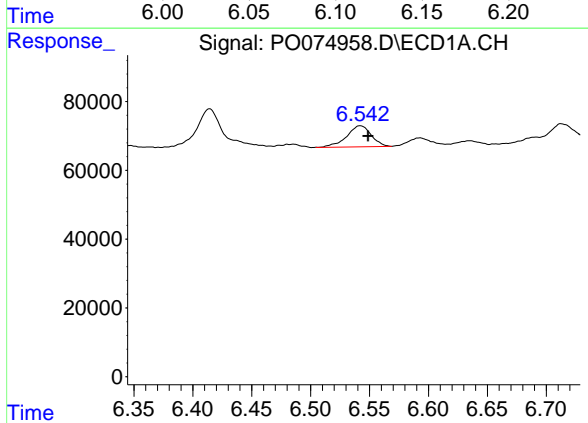
R.T.: 0.000 min  
 Exp R.T.: 7.238 min  
 Response: 0  
 Conc: N.D.

Instrument :  
 ECD\_O  
 ClientSampled :  
 S17-06-C



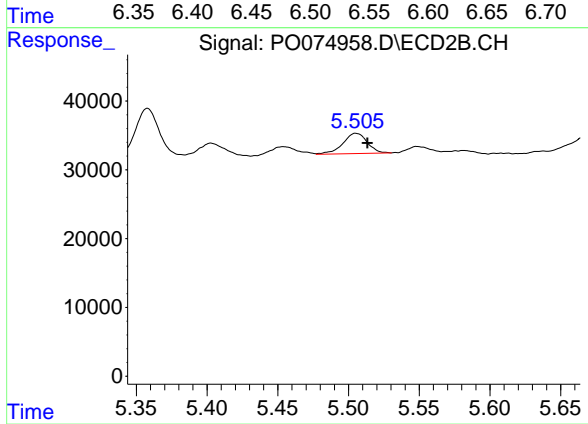
#20 AR-1242-5

R.T.: 6.110 min  
 Delta R.T.: -0.010 min  
 Response: 218501  
 Conc: 124.80 ng/ml



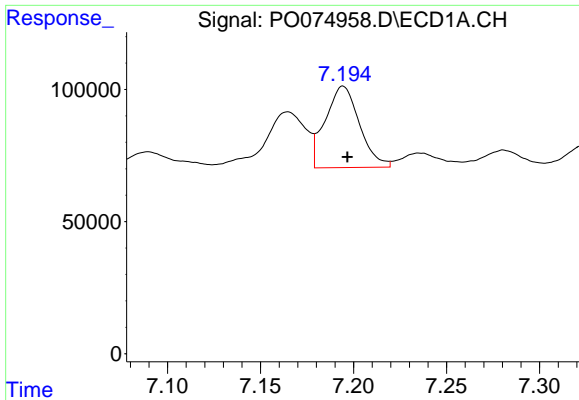
#22 AR-1248-2

R.T.: 6.542 min  
 Delta R.T.: -0.007 min  
 Response: 89502  
 Conc: 28.78 ng/ml



#22 AR-1248-2

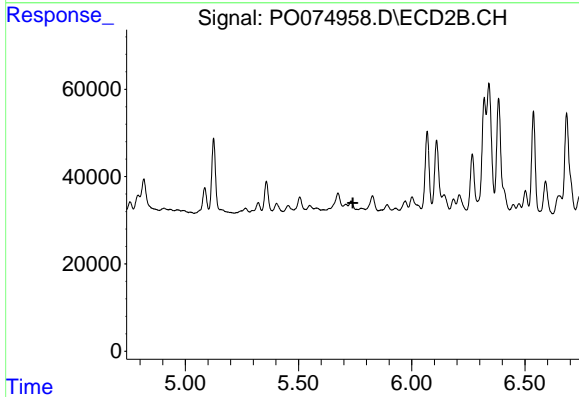
R.T.: 5.505 min  
 Delta R.T.: -0.008 min  
 Response: 35369  
 Conc: 18.82 ng/ml



#24 AR-1248-4

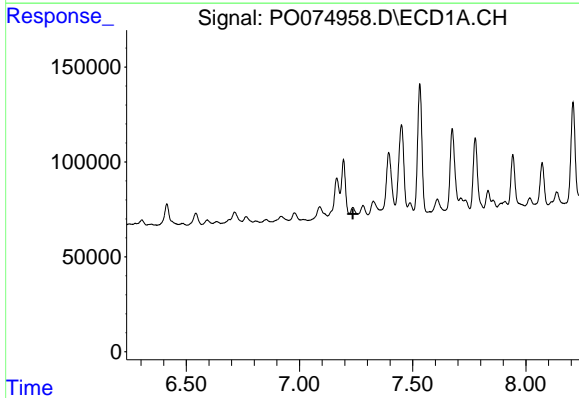
R.T.: 7.194 min  
 Delta R.T.: -0.002 min  
 Response: 394857  
 Conc: 88.54 ng/ml

Instrument :  
 ECD\_O  
 ClientSampled :  
 S17-06-C



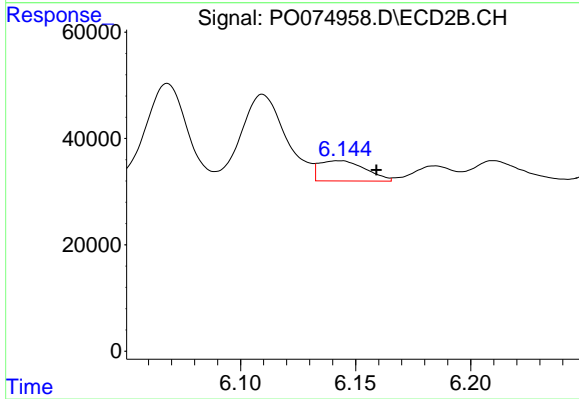
#24 AR-1248-4

R.T.: 0.000 min  
 Exp R.T. : 5.740 min  
 Response: 0  
 Conc: N.D.



#25 AR-1248-5

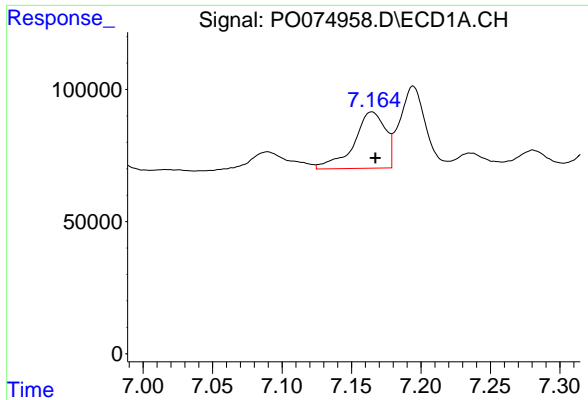
R.T.: 0.000 min  
 Exp R.T. : 7.236 min  
 Response: 0  
 Conc: N.D.



#25 AR-1248-5

R.T.: 6.143 min  
 Delta R.T.: -0.016 min  
 Response: 53224  
 Conc: 22.64 ng/ml

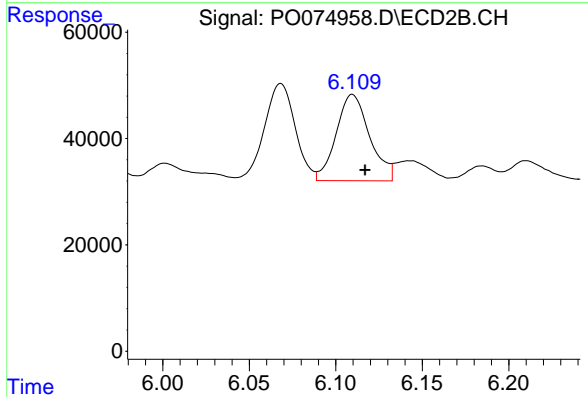




#26 AR-1254-1

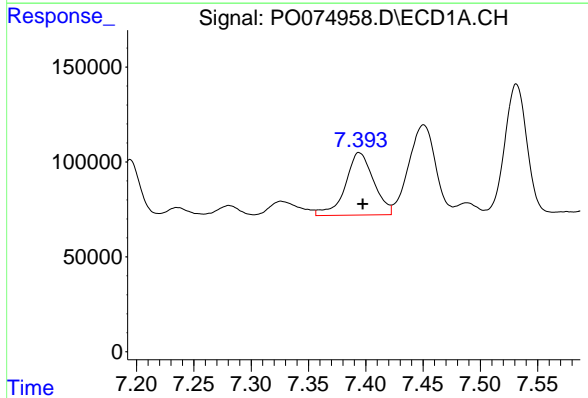
R.T.: 7.165 min  
 Delta R.T.: -0.003 min  
 Response: 337141  
 Conc: 76.66 ng/ml

Instrument :  
 ECD\_O  
 ClientSampled :  
 S17-06-C



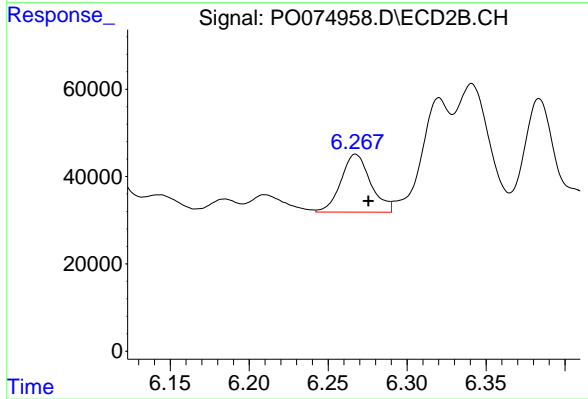
#26 AR-1254-1

R.T.: 6.110 min  
 Delta R.T.: -0.007 min  
 Response: 218501  
 Conc: 60.49 ng/ml



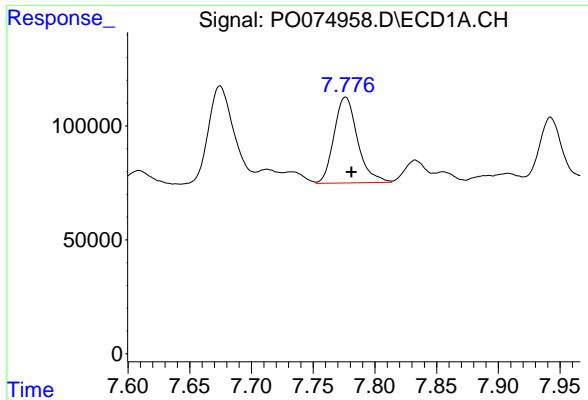
#27 AR-1254-2

R.T.: 7.394 min  
 Delta R.T.: -0.003 min  
 Response: 567438  
 Conc: 83.31 ng/ml



#27 AR-1254-2

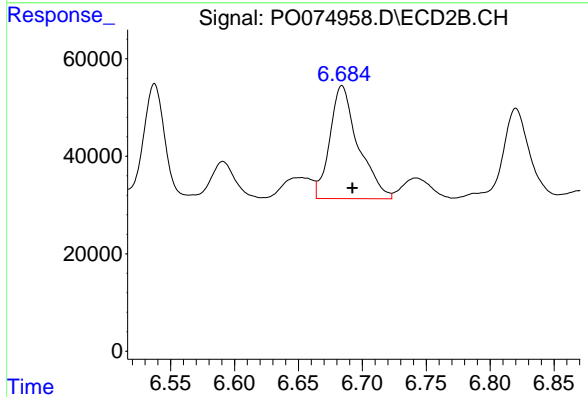
R.T.: 6.267 min  
 Delta R.T.: -0.008 min  
 Response: 173311  
 Conc: 55.61 ng/ml



#28 AR-1254-3

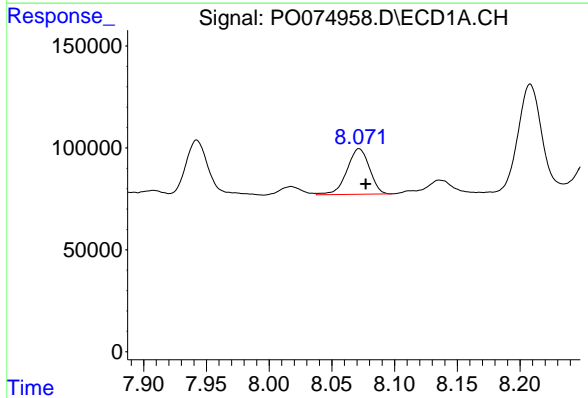
R.T.: 7.776 min  
 Delta R.T.: -0.005 min  
 Response: 499949  
 Conc: 71.28 ng/ml

Instrument :  
 ECD\_O  
 ClientSampled :  
 S17-06-C



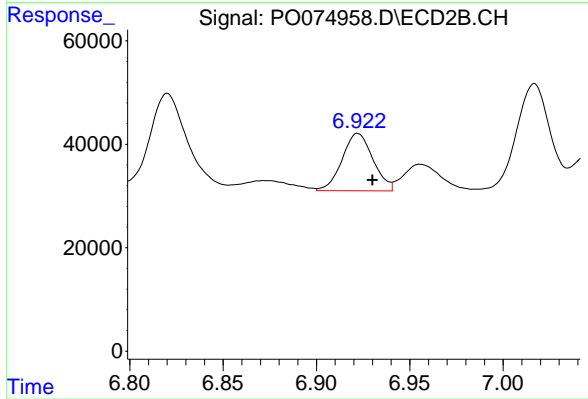
#28 AR-1254-3

R.T.: 6.684 min  
 Delta R.T.: -0.008 min  
 Response: 358694  
 Conc: 73.14 ng/ml



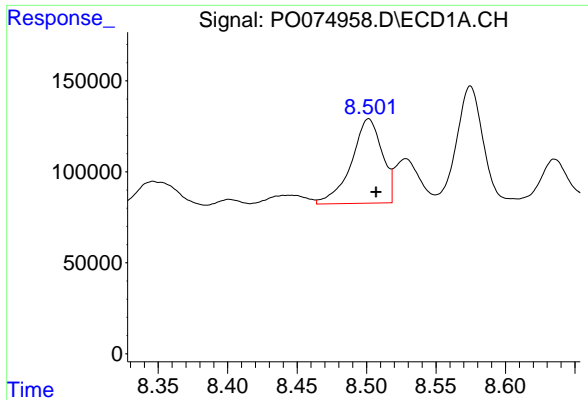
#29 AR-1254-4

R.T.: 8.072 min  
 Delta R.T.: -0.005 min  
 Response: 280607  
 Conc: 46.27 ng/ml



#29 AR-1254-4

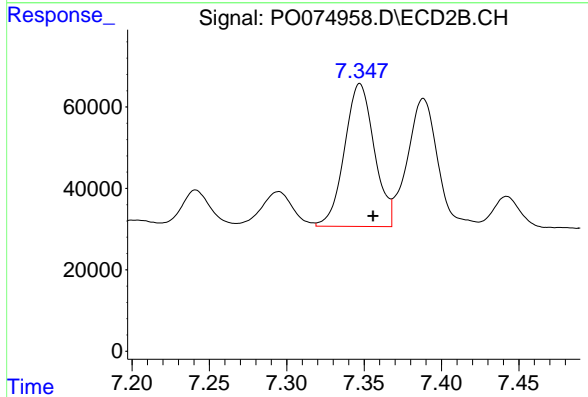
R.T.: 6.922 min  
 Delta R.T.: -0.008 min  
 Response: 127771  
 Conc: 36.85 ng/ml



#30 AR-1254-5

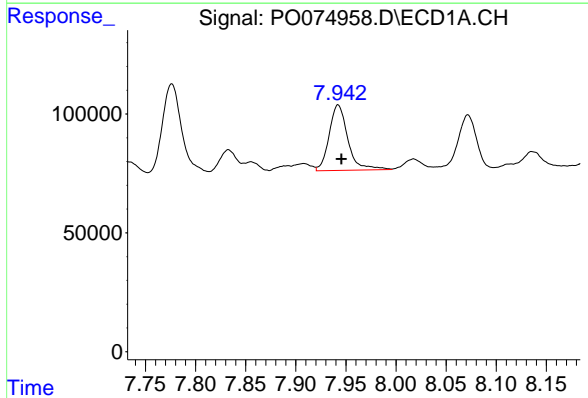
R.T.: 8.502 min  
 Delta R.T.: -0.005 min  
 Response: 715416  
 Conc: 123.16 ng/ml

Instrument :  
 ECD\_O  
 ClientSampleId :  
 S17-06-C



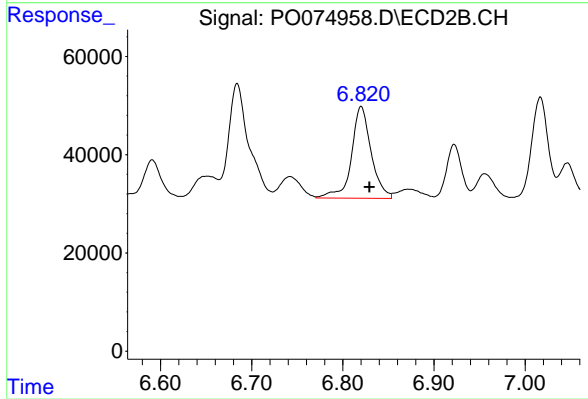
#30 AR-1254-5

R.T.: 7.347 min  
 Delta R.T.: -0.009 min  
 Response: 469559  
 Conc: 103.75 ng/ml



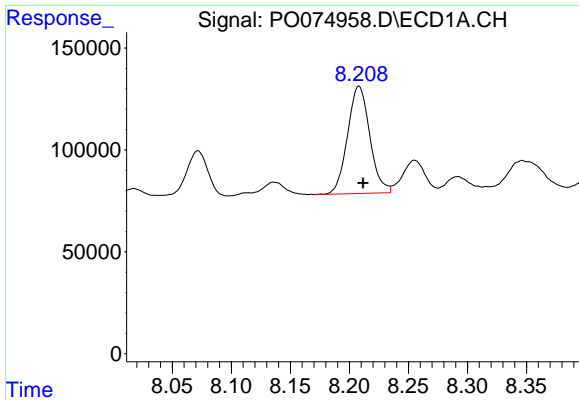
#31 AR-1260-1

R.T.: 7.942 min  
 Delta R.T.: -0.003 min  
 Response: 358477  
 Conc: 71.86 ng/ml



#31 AR-1260-1

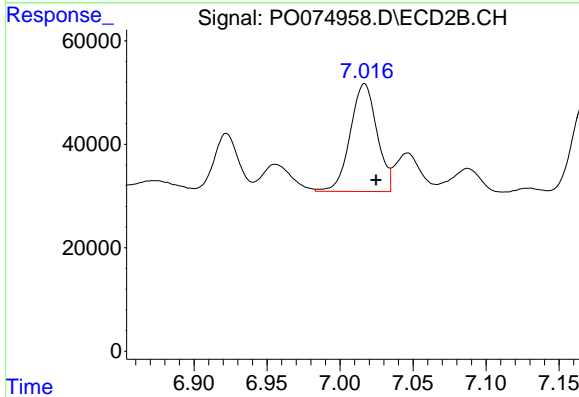
R.T.: 6.820 min  
 Delta R.T.: -0.009 min  
 Response: 280501  
 Conc: 87.92 ng/ml



#32 AR-1260-2

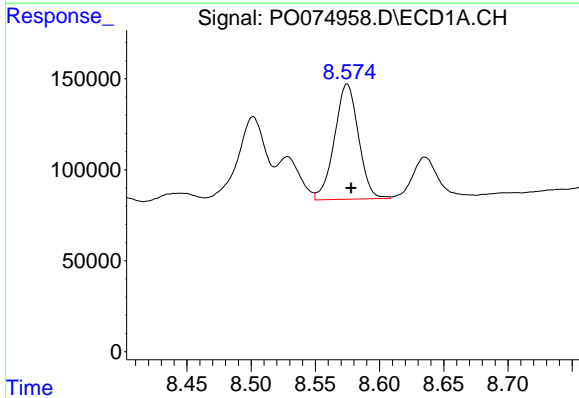
R.T.: 8.208 min  
 Delta R.T.: -0.004 min  
 Response: 690913  
 Conc: 101.57 ng/ml

Instrument :  
 ECD\_O  
 ClientSampleId :  
 S17-06-C



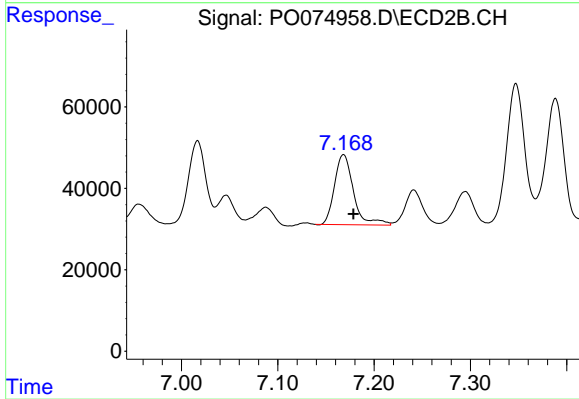
#32 AR-1260-2

R.T.: 7.017 min  
 Delta R.T.: -0.008 min  
 Response: 265236  
 Conc: 62.39 ng/ml



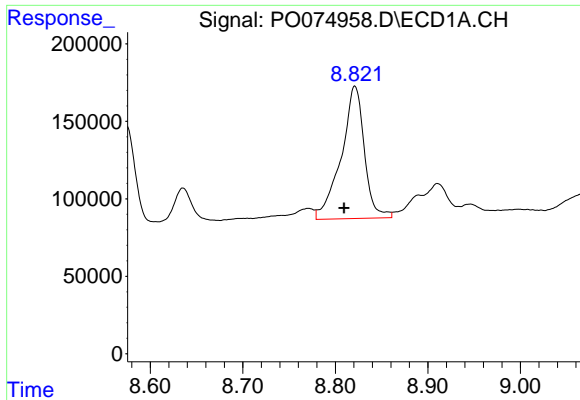
#33 AR-1260-3

R.T.: 8.575 min  
 Delta R.T.: -0.003 min  
 Response: 823594  
 Conc: 143.69 ng/ml



#33 AR-1260-3

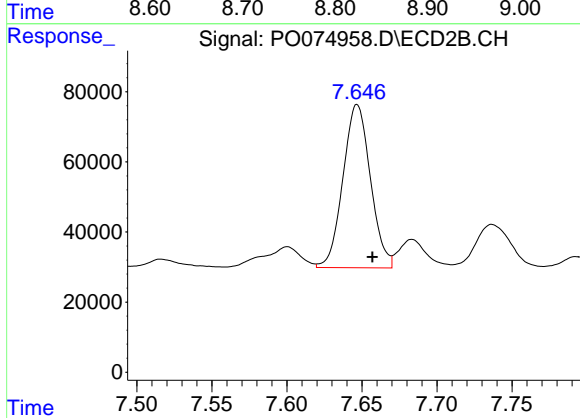
R.T.: 7.168 min  
 Delta R.T.: -0.010 min  
 Response: 235256  
 Conc: 65.29 ng/ml



#34 AR-1260-4

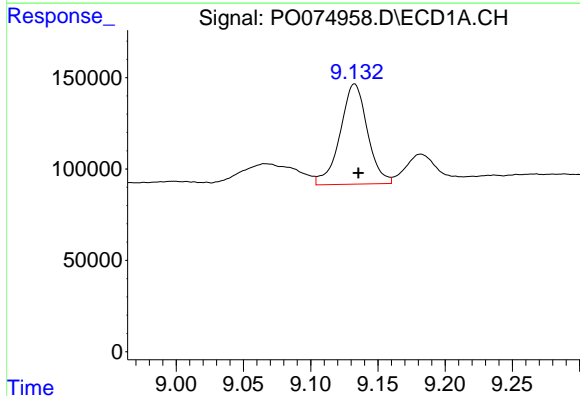
R.T.: 8.821 min  
 Delta R.T.: 0.012 min  
 Response: 1486865  
 Conc: 271.76 ng/ml

Instrument :  
 ECD\_O  
 ClientSampled :  
 S17-06-C



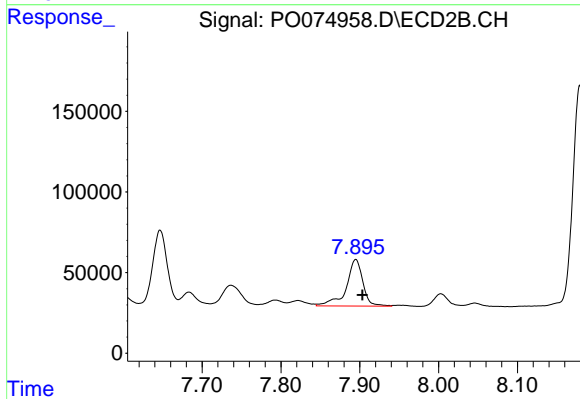
#34 AR-1260-4

R.T.: 7.647 min  
 Delta R.T.: -0.010 min  
 Response: 593786  
 Conc: 189.63 ng/ml



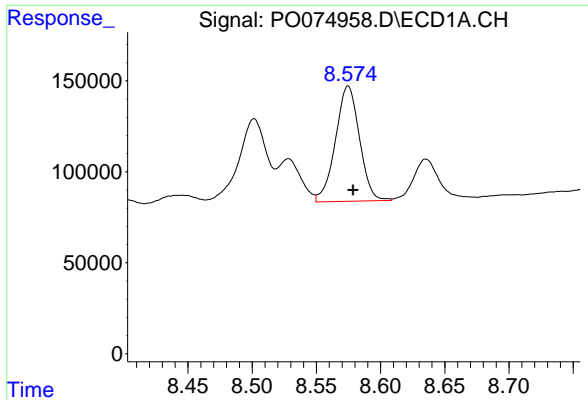
#35 AR-1260-5

R.T.: 9.133 min  
 Delta R.T.: -0.003 min  
 Response: 773698  
 Conc: 61.92 ng/ml



#35 AR-1260-5

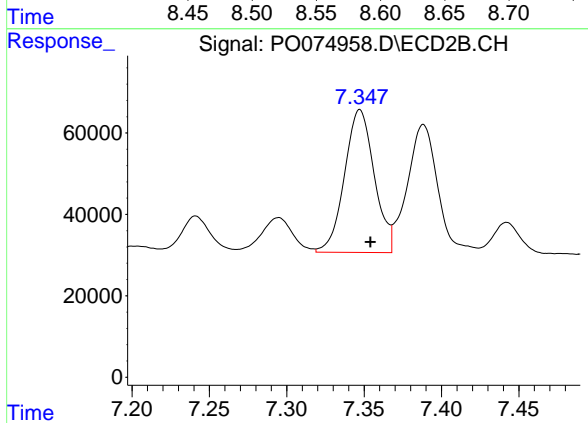
R.T.: 7.895 min  
 Delta R.T.: -0.008 min  
 Response: 425771  
 Conc: 53.57 ng/ml



#36 AR-1262-1

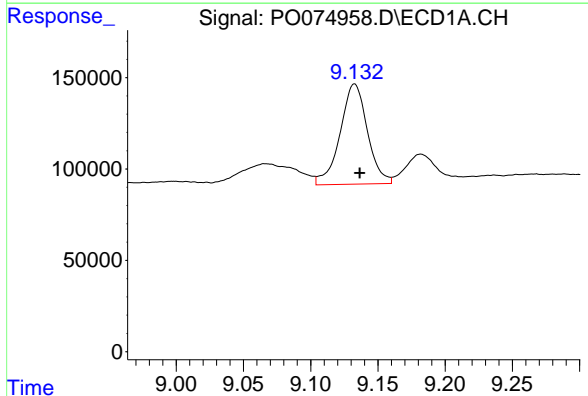
R.T.: 8.575 min  
 Delta R.T.: -0.004 min  
 Response: 823594  
 Conc: 92.50 ng/ml

Instrument :  
 ECD\_O  
 ClientSampled :  
 S17-06-C



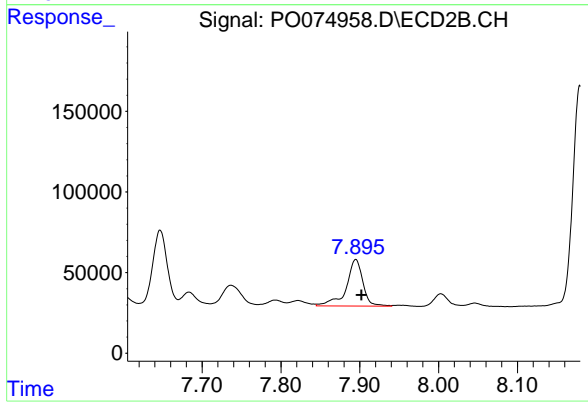
#36 AR-1262-1

R.T.: 7.347 min  
 Delta R.T.: -0.007 min  
 Response: 469559  
 Conc: 184.53 ng/ml



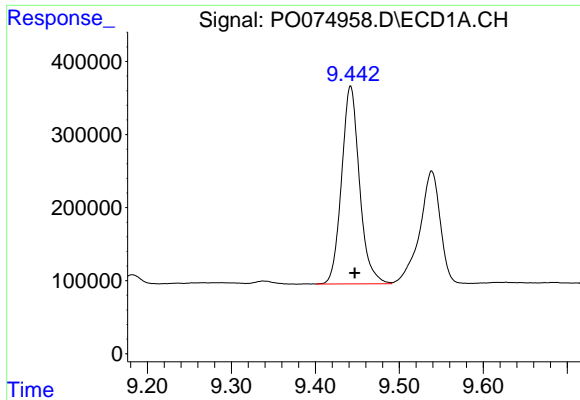
#37 AR-1262-2

R.T.: 9.133 min  
 Delta R.T.: -0.004 min  
 Response: 773698  
 Conc: 50.53 ng/ml



#37 AR-1262-2

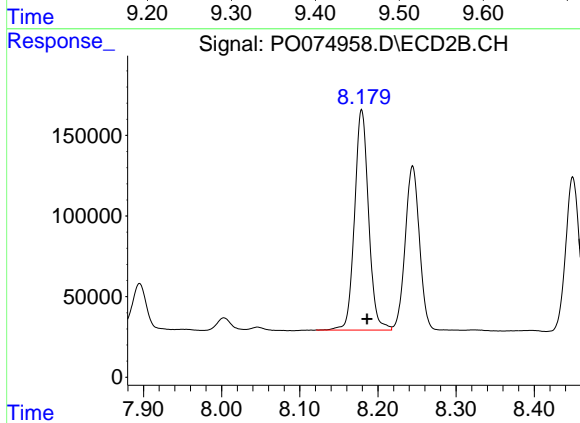
R.T.: 7.895 min  
 Delta R.T.: -0.007 min  
 Response: 425771  
 Conc: 46.31 ng/ml



#38 AR-1262-3

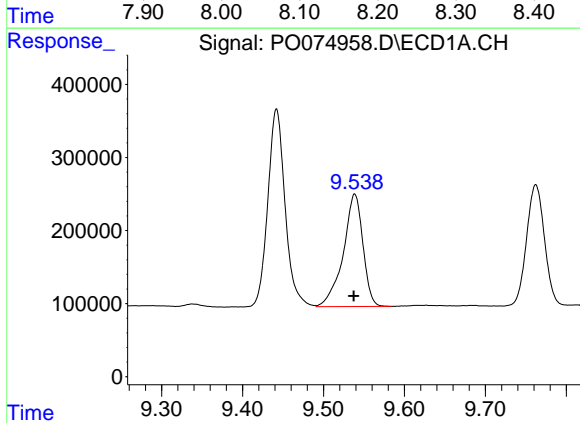
R.T.: 9.442 min  
Delta R.T.: -0.005 min  
Response: 4012771  
Conc: 400.64 ng/ml

Instrument :  
ECD\_O  
ClientSampled :  
S17-06-C



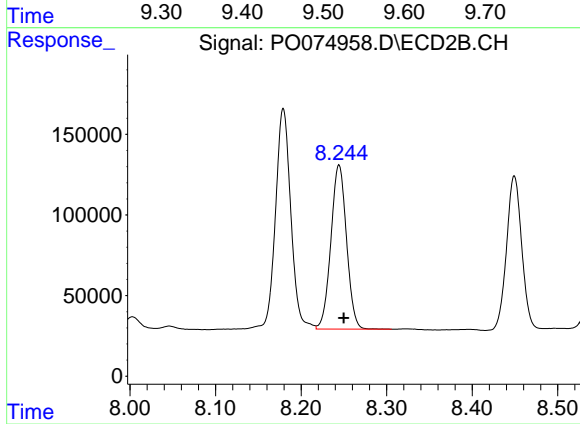
#38 AR-1262-3

R.T.: 8.179 min  
Delta R.T.: -0.007 min  
Response: 1703863  
Conc: 430.89 ng/ml



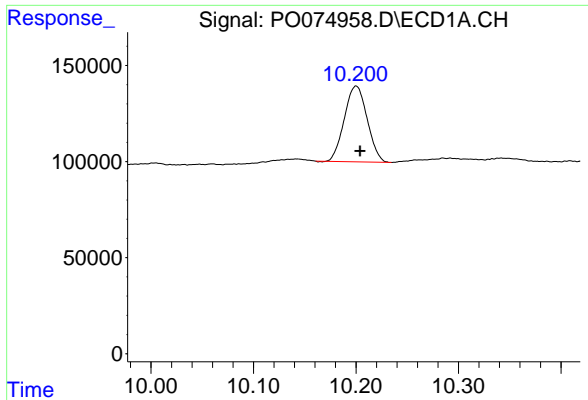
#39 AR-1262-4

R.T.: 9.539 min  
Delta R.T.: 0.001 min  
Response: 2601735  
Conc: 349.35 ng/ml



#39 AR-1262-4

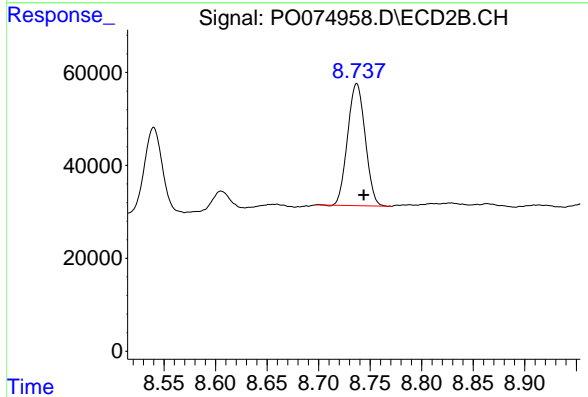
R.T.: 8.244 min  
Delta R.T.: -0.005 min  
Response: 1293690  
Conc: 195.27 ng/ml



#40 AR-1262-5

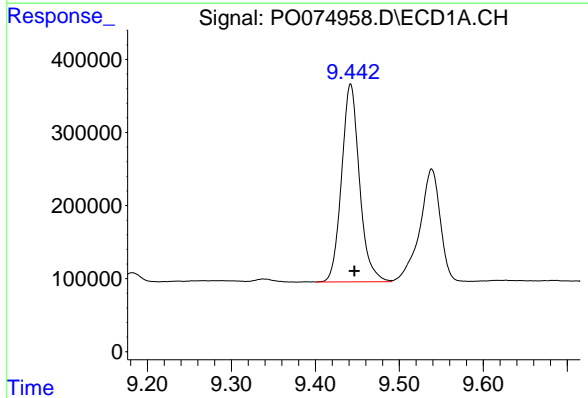
R.T.: 10.200 min  
Delta R.T.: -0.004 min  
Response: 609752  
Conc: 116.55 ng/ml

Instrument :  
ECD\_O  
ClientSampled :  
S17-06-C



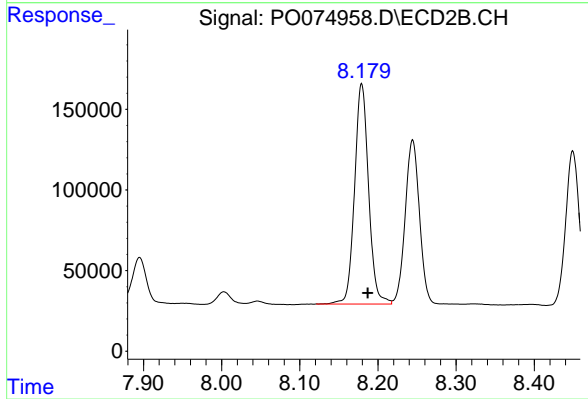
#40 AR-1262-5

R.T.: 8.737 min  
Delta R.T.: -0.007 min  
Response: 312708  
Conc: 101.28 ng/ml



#41 AR-1268-1

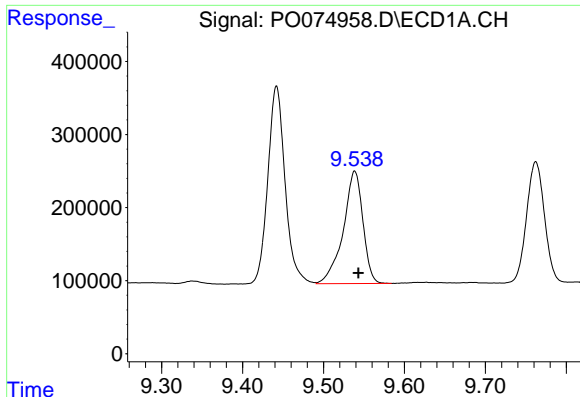
R.T.: 9.442 min  
Delta R.T.: -0.004 min  
Response: 4012771  
Conc: 214.78 ng/ml



#41 AR-1268-1

R.T.: 8.179 min  
Delta R.T.: -0.008 min  
Response: 1703863  
Conc: 152.20 ng/ml

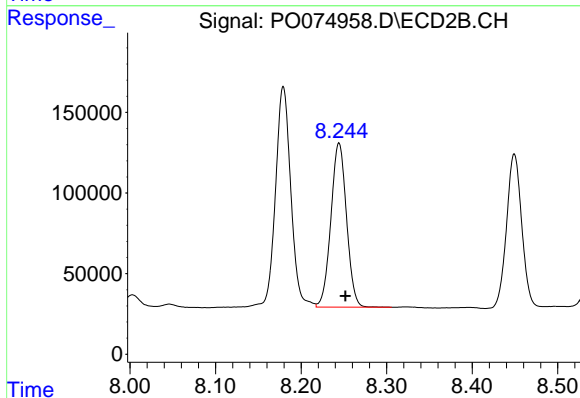




#42 AR-1268-2

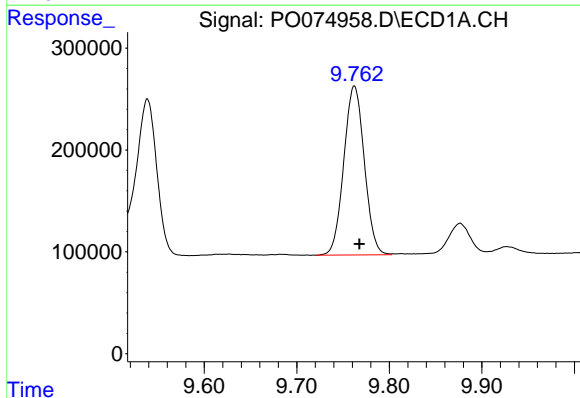
R.T.: 9.539 min  
 Delta R.T.: -0.005 min  
 Response: 2601735  
 Conc: 163.07 ng/ml

Instrument :  
 ECD\_O  
 ClientSampled :  
 S17-06-C



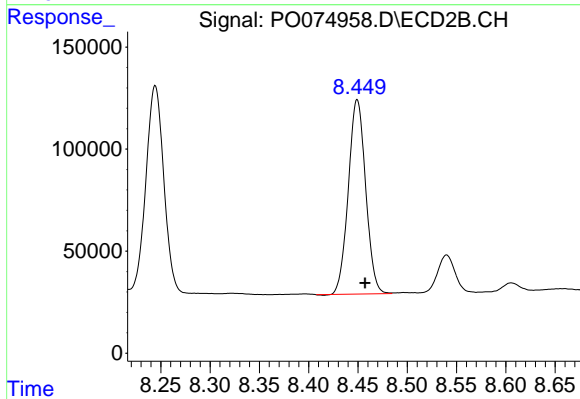
#42 AR-1268-2

R.T.: 8.244 min  
 Delta R.T.: -0.008 min  
 Response: 1293690  
 Conc: 135.22 ng/ml



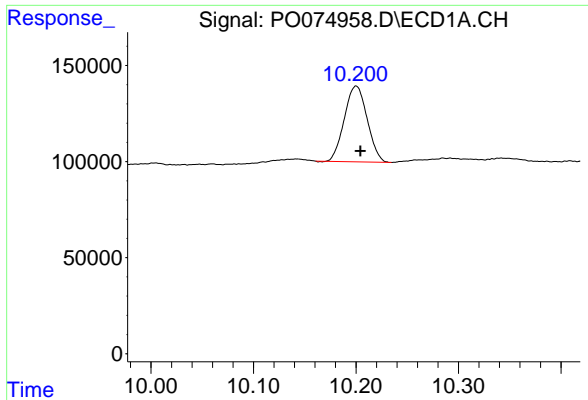
#43 AR-1268-3

R.T.: 9.762 min  
 Delta R.T.: -0.005 min  
 Response: 2557362  
 Conc: 180.07 ng/ml



#43 AR-1268-3

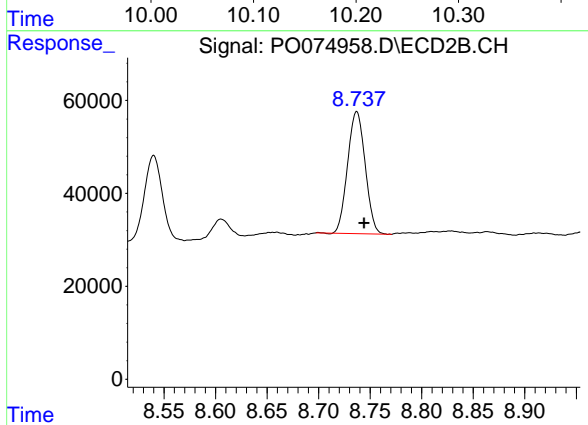
R.T.: 8.449 min  
 Delta R.T.: -0.008 min  
 Response: 1164201  
 Conc: 140.12 ng/ml



#44 AR-1268-4

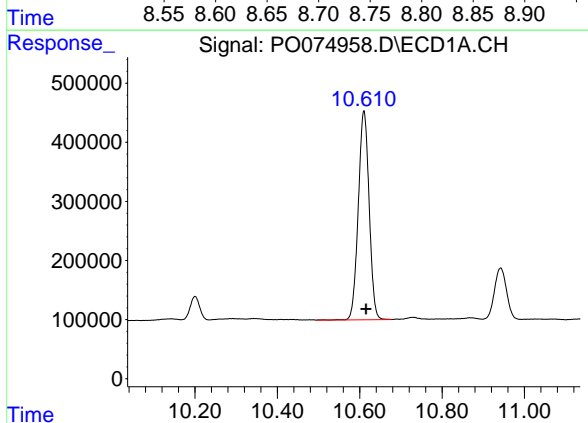
R.T.: 10.200 min  
Delta R.T.: -0.004 min  
Response: 609752  
Conc: 104.08 ng/ml

Instrument :  
ECD\_O  
ClientSampled :  
S17-06-C



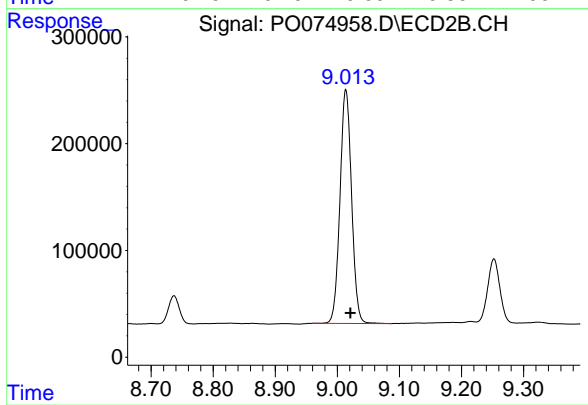
#44 AR-1268-4

R.T.: 8.737 min  
Delta R.T.: -0.007 min  
Response: 312708  
Conc: 90.14 ng/ml



#45 AR-1268-5

R.T.: 10.610 min  
Delta R.T.: -0.005 min  
Response: 6450658  
Conc: 154.37 ng/ml



#45 AR-1268-5

R.T.: 9.014 min  
Delta R.T.: -0.007 min  
Response: 2839317  
Conc: 119.91 ng/ml