

Data Path : Z:\pestpcbsrv\HPCHEM1\ECD_0\Data\P0011921\
 Data File : P0074962.D
 Signal(s) : Signal #1: ECD1A.CH Signal #2: ECD2B.CH
 Acq On : 19 Jan 2021 20:27
 Operator : AJ/MA
 Sample : M1108-06DL 2X
 Misc :
 ALS Vial : 36 Sample Multiplier: 1

Instrument :
 ECD_0
 ClientSampled :
 S12-02-CDL

Integration File signal 1: autoint1.e
 Integration File signal 2: autoint2.e
 Quant Time: Jan 20 03:55:20 2021
 Quant Method : Z:\pestpcbsrv\HPCHEM1\ECD_0\methods\P0011121.M
 Quant Title : GC EXTRACTABLES
 QLast Update : Tue Jan 12 06:02:45 2021
 Response via : Initial Calibration
 Integrator: ChemStation 6890 Scale Mode: Small noise peaks clipped

Volume Inj. : 2 µl
 Signal #1 Phase : ZB-MR1 Signal #2 Phase: ZB-MR2
 Signal #1 Info : 30Mx0.32mmx 0.50µ Signal #2 Info : 30M x 0.32mm x 0.25µm

Compound	RT#1	RT#2	Resp#1	Resp#2	ng/ml	ng/ml

System Monitoring Compounds						
1) SA Tetrachlo...	4.928	4.002	1065838	593689	10.101	10.554
2) SA Decachlor...	10.942	9.252	3165856	1493071	31.193	27.194
Target Compounds						
6) L1 AR-1016-4	0.000	5.506	0	20138	N.D.	14.329 #
8) L2 AR-1221-1	5.182	0.000	161627	0	131.586	N.D. #
20) L4 AR-1242-5	0.000	6.110	0	115046	N.D.	65.709 #
22) L5 AR-1248-2	0.000	5.506	0	20138	N.D.	10.715 #
24) L5 AR-1248-4	7.194	0.000	43310	0	9.712	N.D. #
26) L6 AR-1254-1	7.164	6.110	109640	115046	24.929	31.851 #
27) L6 AR-1254-2	7.393	6.268	254094	138429	37.308	44.418
28) L6 AR-1254-3	7.776	6.684	325192	257241	46.361	52.456
29) L6 AR-1254-4	8.072	6.922	384692	218798	63.432	63.094
30) L6 AR-1254-5	8.502	7.347	752550	406617	129.550	89.841 #
31) L7 AR-1260-1	7.943	6.820	201955	174445	40.482	54.680 #
32) L7 AR-1260-2	8.209	7.017	409388	220375	60.186	51.840
33) L7 AR-1260-3	8.576	7.168	1243984	131247	217.035	36.422 #
34) L7 AR-1260-4	8.822	7.647	2668346	1176969	487.698	375.870
35) L7 AR-1260-5	9.132	7.895	330534	214581	26.453	26.996
36) L8 AR-1262-1	8.576	7.347	1243984	406617	139.708	159.797
37) L8 AR-1262-2	9.132	7.895	330534	214581	21.589	23.338
38) L8 AR-1262-3	9.443	8.180	9701494	4496319	968.620	1137.065
39) L8 AR-1262-4	9.539	8.245	5495686	2764968	737.939	417.340 #
40) L8 AR-1262-5	10.200	8.737	1207065	603754	230.726	195.553
41) L9 AR-1268-1	9.443	8.180	9701494	4496319	519.256	401.645
42) L9 AR-1268-2	9.539	8.245	5495686	2764968	344.451	289.005
43) L9 AR-1268-3	9.762	8.450	7753591	3651284	545.951	439.445
44) L9 AR-1268-4	10.200	8.737	1207065	603754	206.035	174.035
45) L9 AR-1268-5	10.610	9.014	21440635	9871160	513.079	416.877

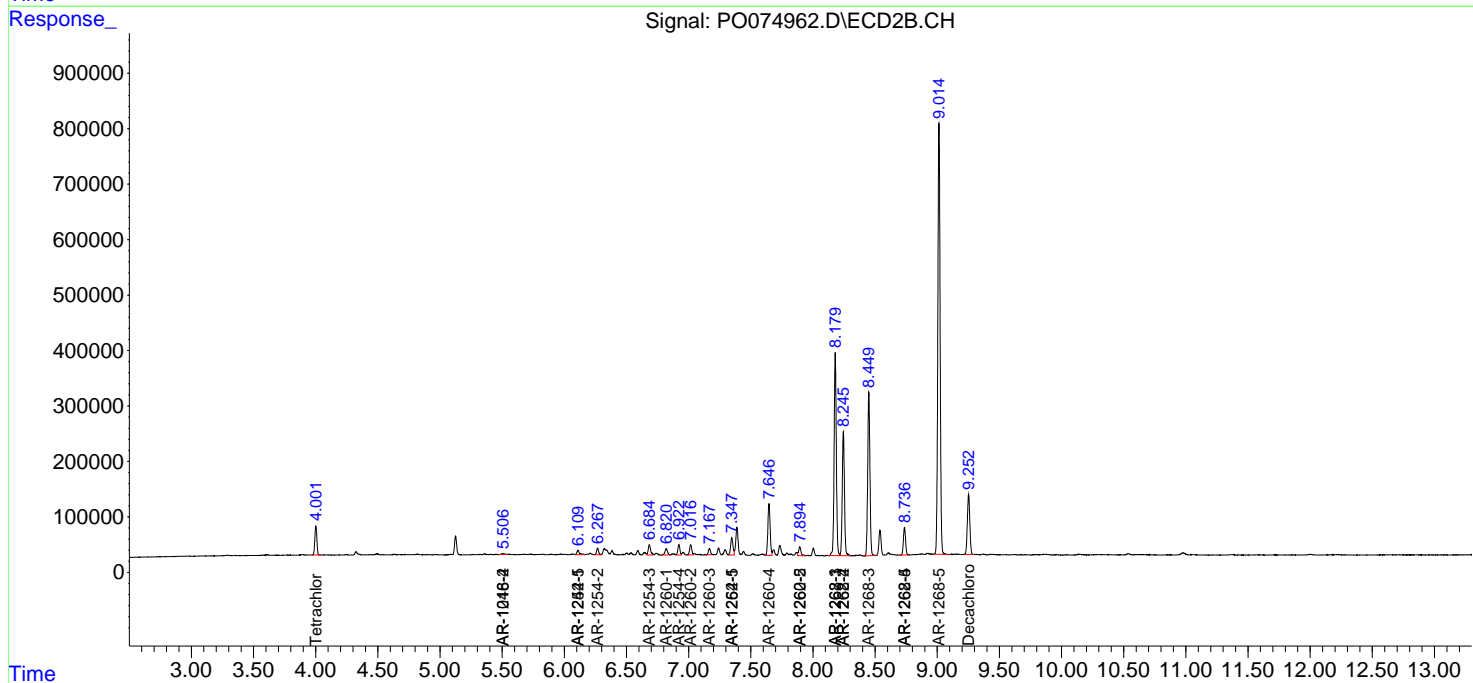
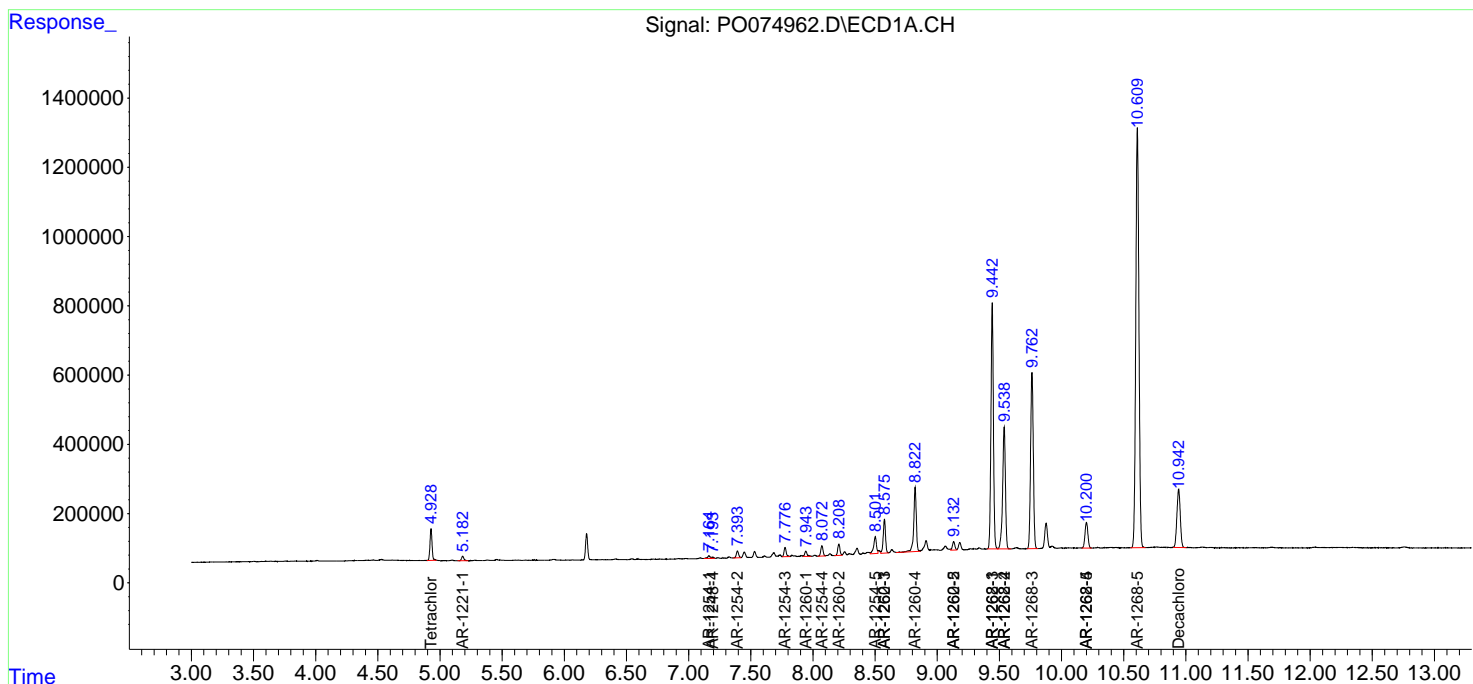
(f)=RT Delta > 1/2 Window (#)=Amounts differ by > 25% (m)=manual int.

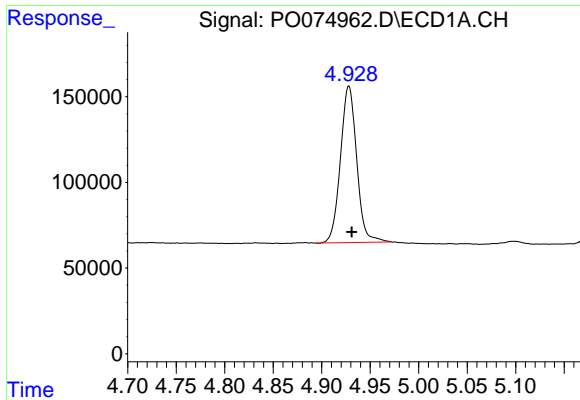
Data Path : Z:\pestpcbsrv\HPCHEM1\ECD_0\Data\P0011921\
 Data File : P0074962.D
 Signal(s) : Signal #1: ECD1A.CH Signal #2: ECD2B.CH
 Acq On : 19 Jan 2021 20:27
 Operator : AJ/MA
 Sample : M1108-06DL 2X
 Misc :
 ALS Vial : 36 Sample Multiplier: 1

Instrument :
 ECD_O
 ClientSampled :
 S12-02-CDL

Integration File signal 1: autoint1.e
 Integration File signal 2: autoint2.e
 Quant Time: Jan 20 03:55:20 2021
 Quant Method : Z:\pestpcbsrv\HPCHEM1\ECD_0\methods\P0011121.M
 Quant Title : GC EXTRACTABLES
 QLast Update : Tue Jan 12 06:02:45 2021
 Response via : Initial Calibration
 Integrator: ChemStation 6890 Scale Mode: Small noise peaks clipped

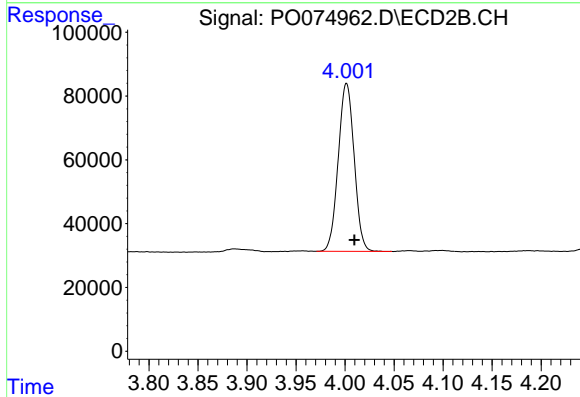
Volume Inj. : 2 µl
 Signal #1 Phase : ZB-MR1 Signal #2 Phase: ZB-MR2
 Signal #1 Info : 30Mx0.32mmx 0.50µ Signal #2 Info : 30M x 0.32mm x 0.25µm



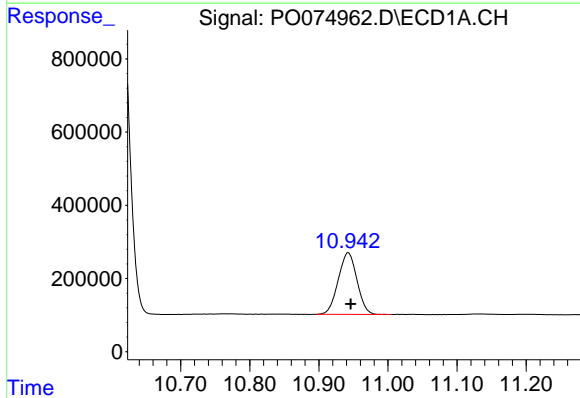


#1 Tetrachloro-m-xylene
 R.T.: 4.928 min
 Delta R.T.: -0.003 min
 Response: 1065838
 Conc: 10.10 ng/ml

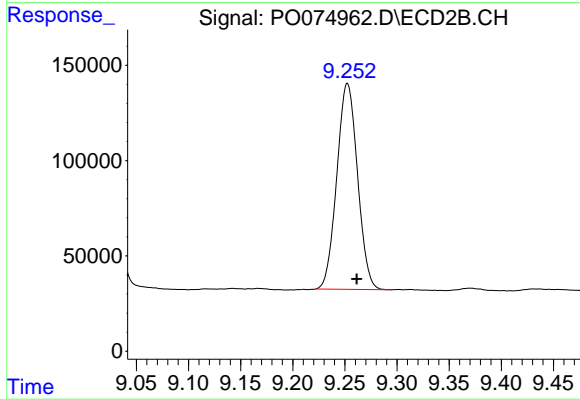
Instrument :
 ECD_O
 ClientSampleId :
 S12-02-CDL



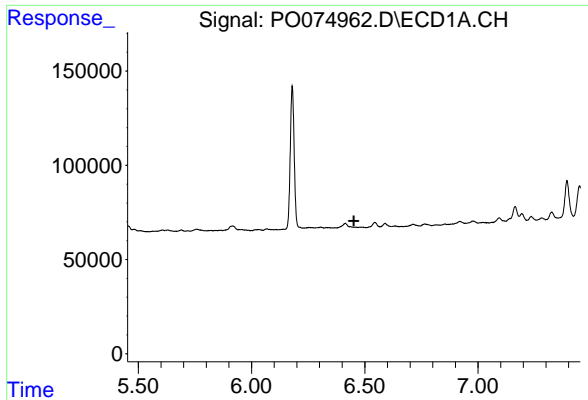
#1 Tetrachloro-m-xylene
 R.T.: 4.002 min
 Delta R.T.: -0.008 min
 Response: 593689
 Conc: 10.55 ng/ml



#2 Decachlorobiphenyl
 R.T.: 10.942 min
 Delta R.T.: -0.004 min
 Response: 3165856
 Conc: 31.19 ng/ml



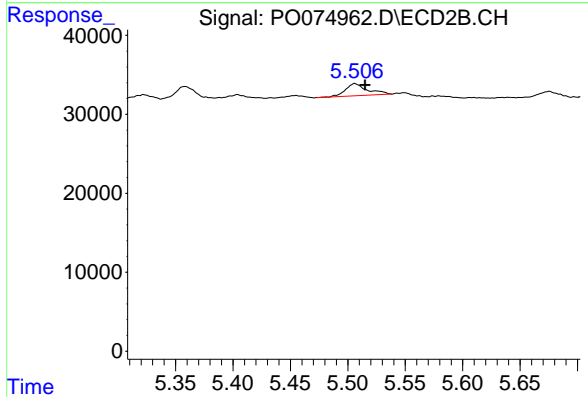
#2 Decachlorobiphenyl
 R.T.: 9.252 min
 Delta R.T.: -0.009 min
 Response: 1493071
 Conc: 27.19 ng/ml



#6 AR-1016-4

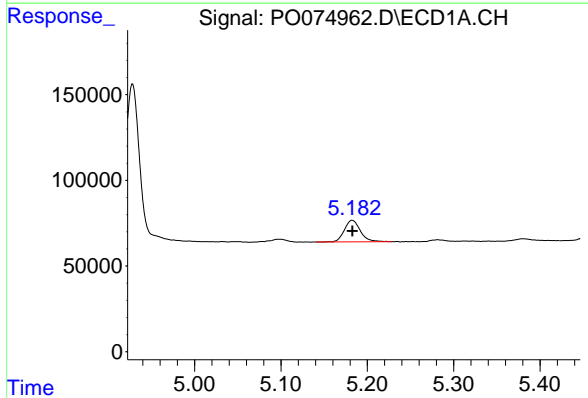
R.T.: 0.000 min
 Exp R.T.: 6.452 min
 Response: 0
 Conc: N.D.

Instrument :
 ECD_O
ClientSampled :
 S12-02-CDL



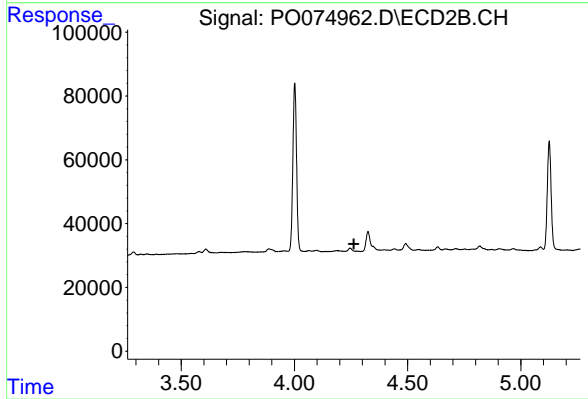
#6 AR-1016-4

R.T.: 5.506 min
 Delta R.T.: -0.009 min
 Response: 20138
 Conc: 14.33 ng/ml



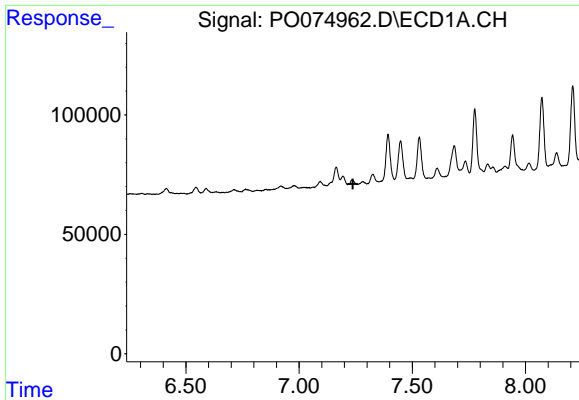
#8 AR-1221-1

R.T.: 5.182 min
 Delta R.T.: 0.000 min
 Response: 161627
 Conc: 131.59 ng/ml



#8 AR-1221-1

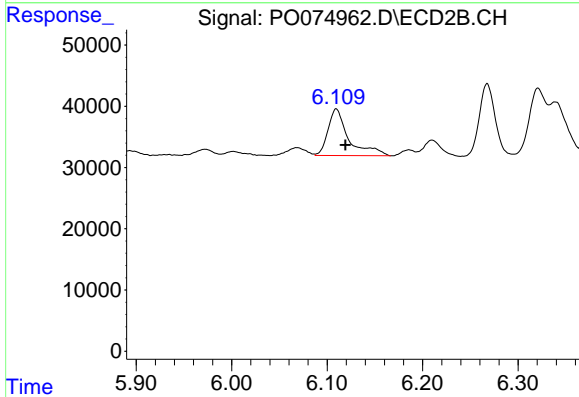
R.T.: 0.000 min
 Exp R.T.: 4.263 min
 Response: 0
 Conc: N.D.



#20 AR-1242-5

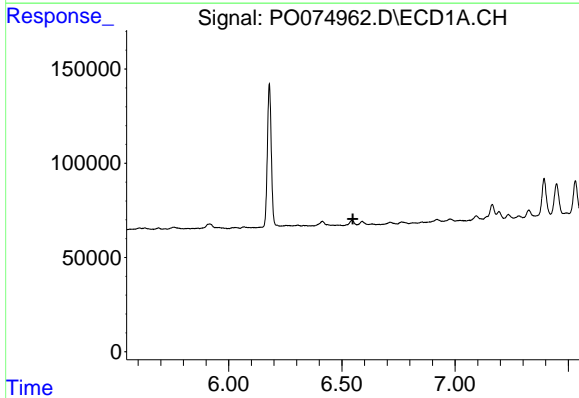
R.T.: 0.000 min
 Exp R.T. : 7.238 min
 Response: 0
 Conc: N.D.

Instrument :
 ECD_O
 ClientSampleId :
 S12-02-CDL



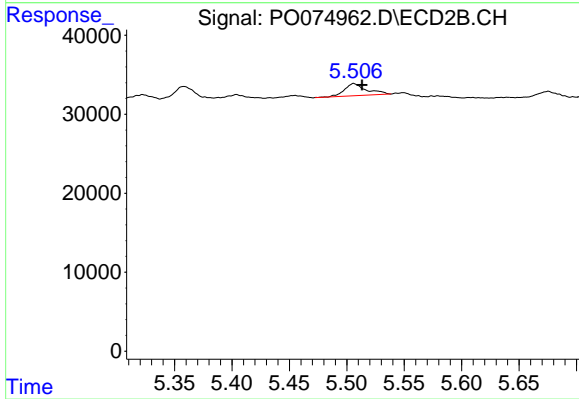
#20 AR-1242-5

R.T.: 6.110 min
 Delta R.T.: -0.010 min
 Response: 115046
 Conc: 65.71 ng/ml



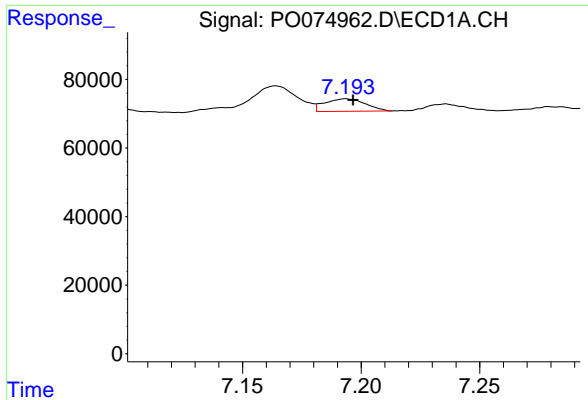
#22 AR-1248-2

R.T.: 0.000 min
 Exp R.T. : 6.549 min
 Response: 0
 Conc: N.D.



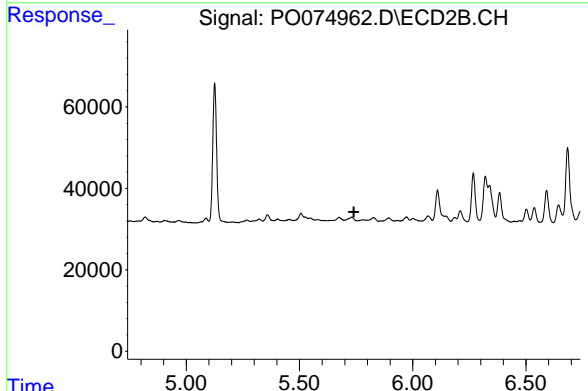
#22 AR-1248-2

R.T.: 5.506 min
 Delta R.T.: -0.007 min
 Response: 20138
 Conc: 10.72 ng/ml

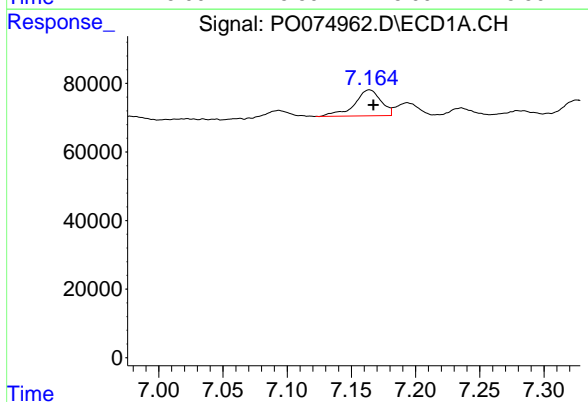


#24 AR-1248-4
 R.T.: 7.194 min
 Delta R.T.: -0.003 min
 Response: 43310
 Conc: 9.71 ng/ml

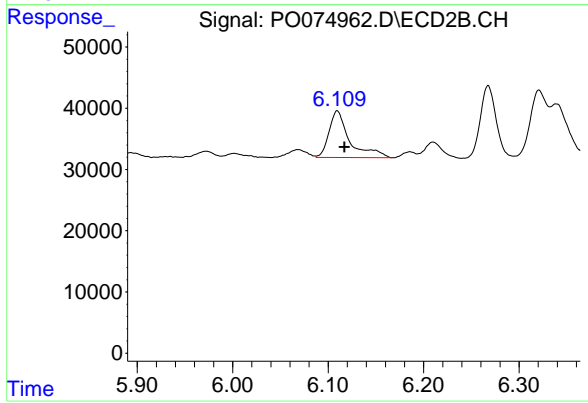
Instrument :
 ECD_O
 ClientSampleId :
 S12-02-CDL



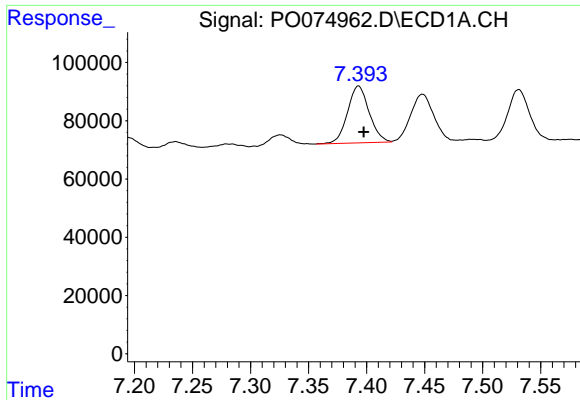
#24 AR-1248-4
 R.T.: 0.000 min
 Exp R.T. : 5.740 min
 Response: 0
 Conc: N.D.



#26 AR-1254-1
 R.T.: 7.164 min
 Delta R.T.: -0.003 min
 Response: 109640
 Conc: 24.93 ng/ml



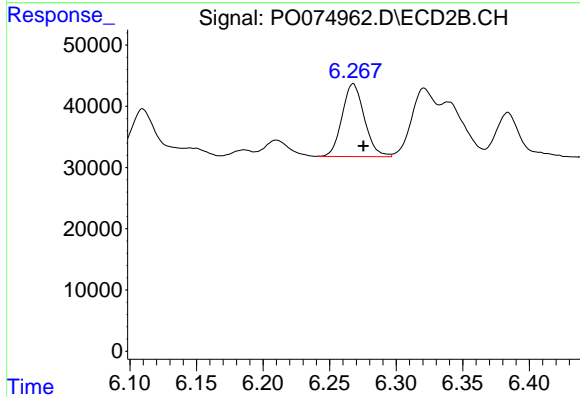
#26 AR-1254-1
 R.T.: 6.110 min
 Delta R.T.: -0.007 min
 Response: 115046
 Conc: 31.85 ng/ml



#27 AR-1254-2

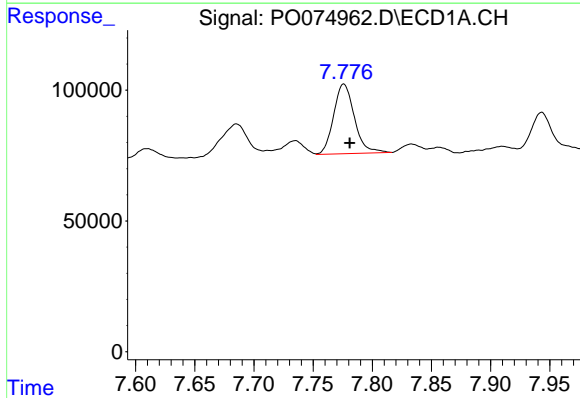
R.T.: 7.393 min
 Delta R.T.: -0.004 min
 Response: 254094
 Conc: 37.31 ng/ml

Instrument :
 ECD_O
 ClientSampleId :
 S12-02-CDL



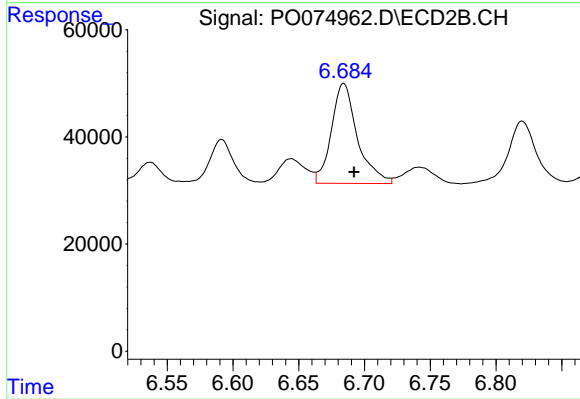
#27 AR-1254-2

R.T.: 6.268 min
 Delta R.T.: -0.008 min
 Response: 138429
 Conc: 44.42 ng/ml



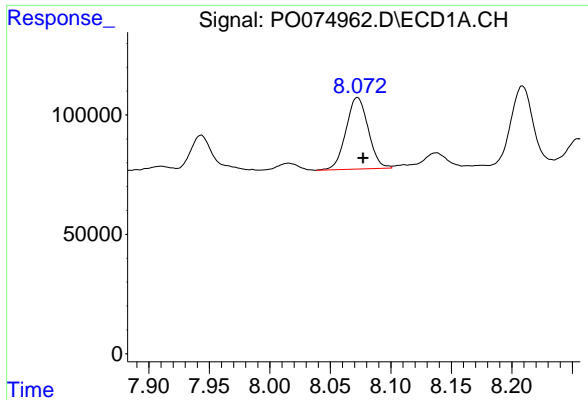
#28 AR-1254-3

R.T.: 7.776 min
 Delta R.T.: -0.005 min
 Response: 325192
 Conc: 46.36 ng/ml



#28 AR-1254-3

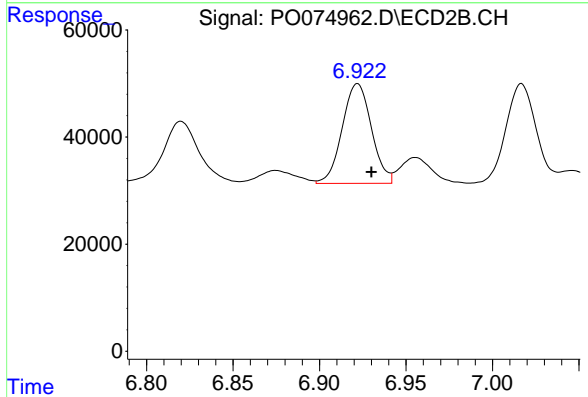
R.T.: 6.684 min
 Delta R.T.: -0.008 min
 Response: 257241
 Conc: 52.46 ng/ml



#29 AR-1254-4

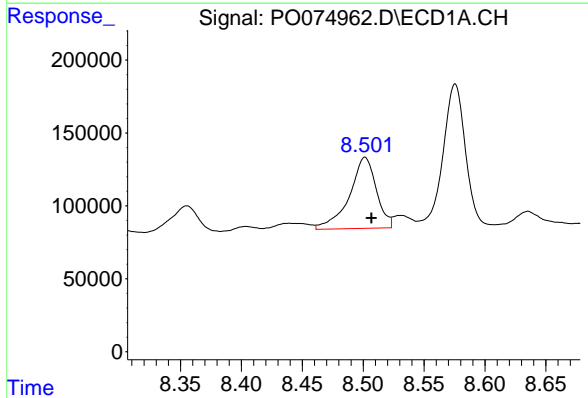
R.T.: 8.072 min
 Delta R.T.: -0.005 min
 Response: 384692
 Conc: 63.43 ng/ml

Instrument :
 ECD_O
 ClientSampleId :
 S12-02-CDL



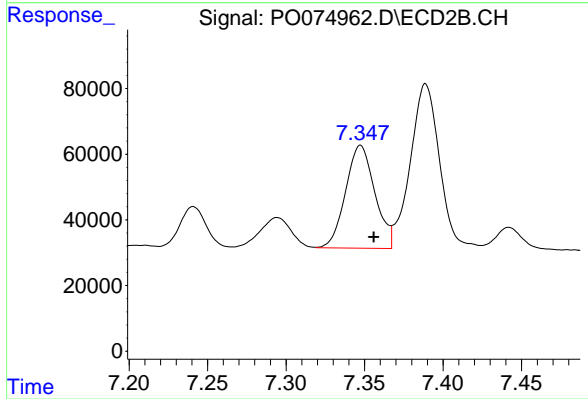
#29 AR-1254-4

R.T.: 6.922 min
 Delta R.T.: -0.008 min
 Response: 218798
 Conc: 63.09 ng/ml



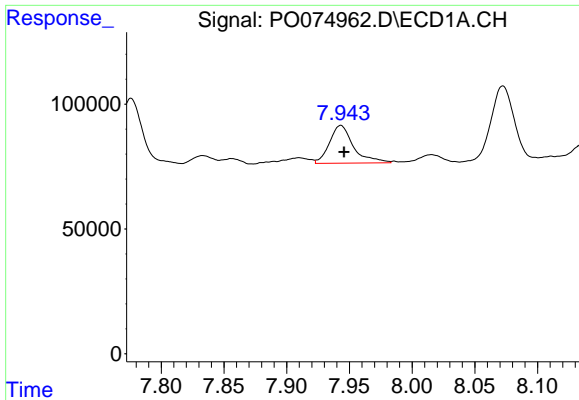
#30 AR-1254-5

R.T.: 8.502 min
 Delta R.T.: -0.005 min
 Response: 752550
 Conc: 129.55 ng/ml



#30 AR-1254-5

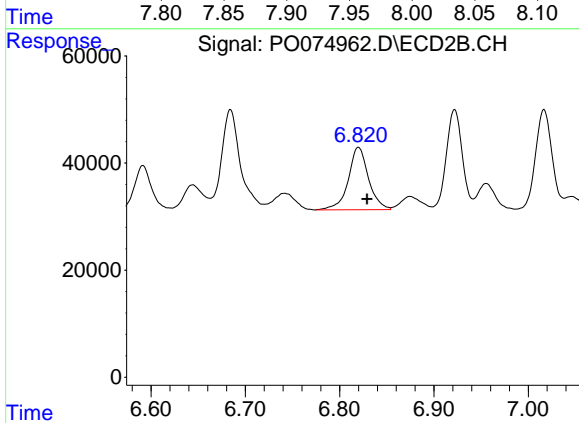
R.T.: 7.347 min
 Delta R.T.: -0.008 min
 Response: 406617
 Conc: 89.84 ng/ml



#31 AR-1260-1

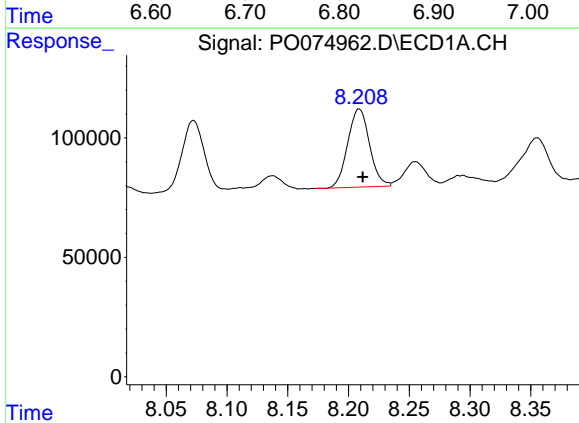
R.T.: 7.943 min
 Delta R.T.: -0.002 min
 Response: 201955
 Conc: 40.48 ng/ml

Instrument :
 ECD_O
 ClientSampleId :
 S12-02-CDL



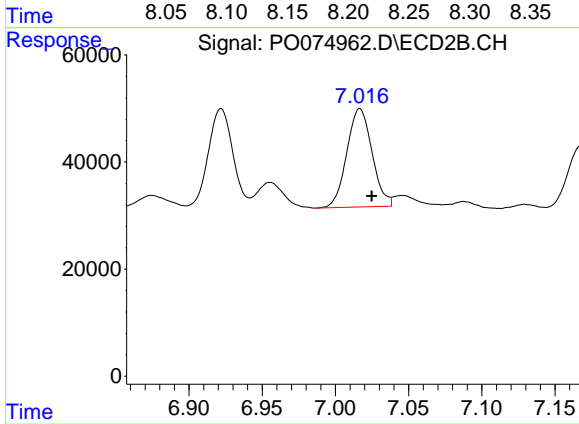
#31 AR-1260-1

R.T.: 6.820 min
 Delta R.T.: -0.009 min
 Response: 174445
 Conc: 54.68 ng/ml



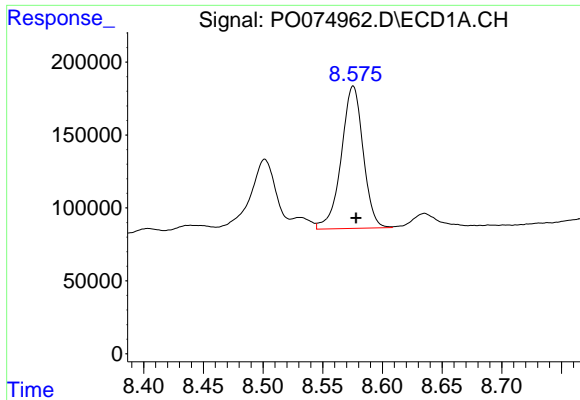
#32 AR-1260-2

R.T.: 8.209 min
 Delta R.T.: -0.003 min
 Response: 409388
 Conc: 60.19 ng/ml



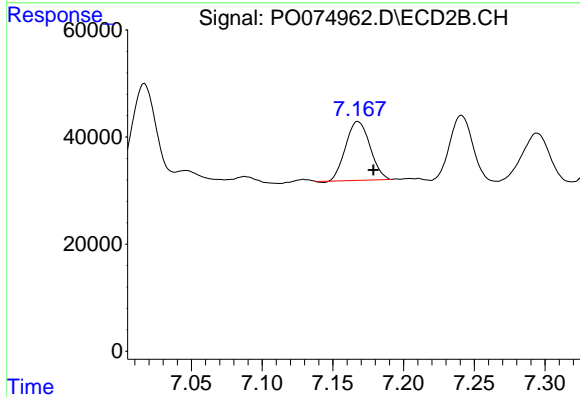
#32 AR-1260-2

R.T.: 7.017 min
 Delta R.T.: -0.008 min
 Response: 220375
 Conc: 51.84 ng/ml

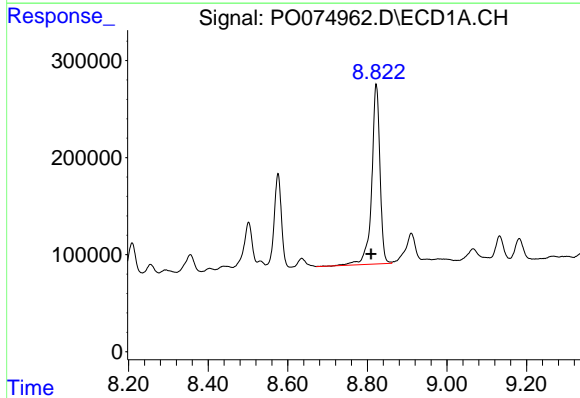


#33 AR-1260-3
 R.T.: 8.576 min
 Delta R.T.: -0.002 min
 Response: 1243984
 Conc: 217.03 ng/ml

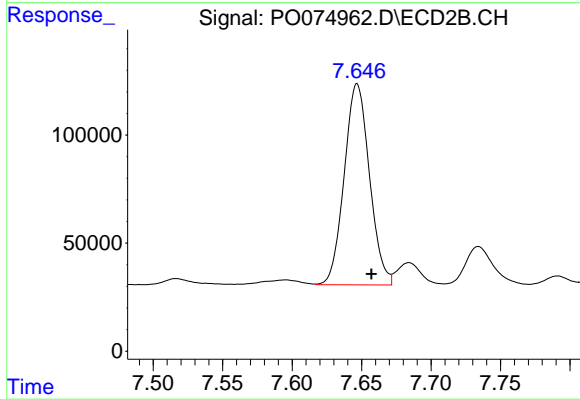
Instrument :
 ECD_O
 ClientSampleId :
 S12-02-CDL



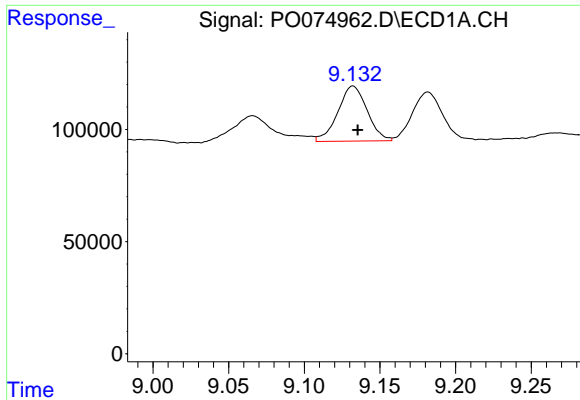
#33 AR-1260-3
 R.T.: 7.168 min
 Delta R.T.: -0.011 min
 Response: 131247
 Conc: 36.42 ng/ml



#34 AR-1260-4
 R.T.: 8.822 min
 Delta R.T.: 0.013 min
 Response: 2668346
 Conc: 487.70 ng/ml

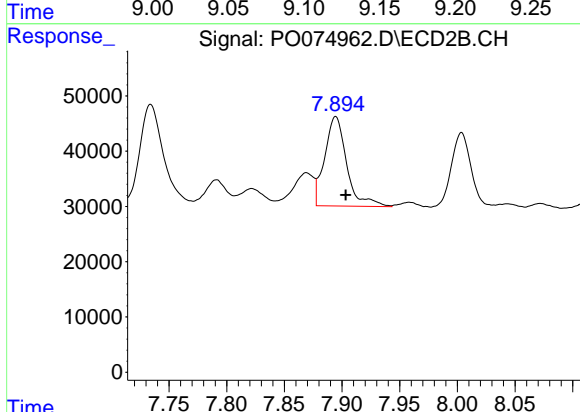


#34 AR-1260-4
 R.T.: 7.647 min
 Delta R.T.: -0.010 min
 Response: 1176969
 Conc: 375.87 ng/ml

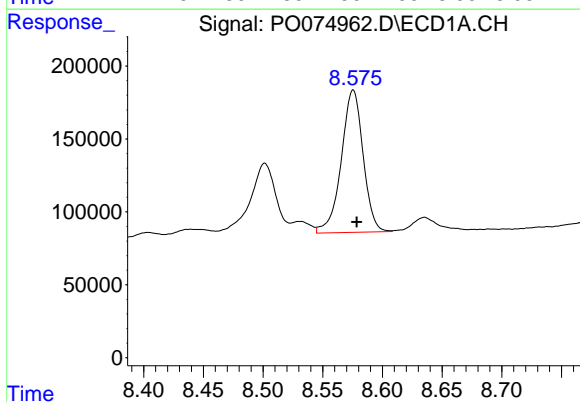


#35 AR-1260-5
 R.T.: 9.132 min
 Delta R.T.: -0.003 min
 Response: 330534
 Conc: 26.45 ng/ml

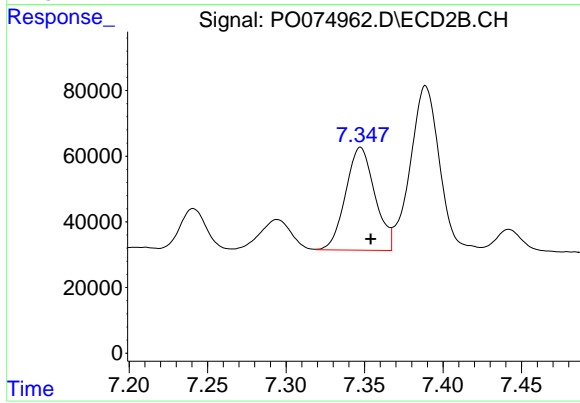
Instrument :
 ECD_O
ClientSampled :
 S12-02-CDL



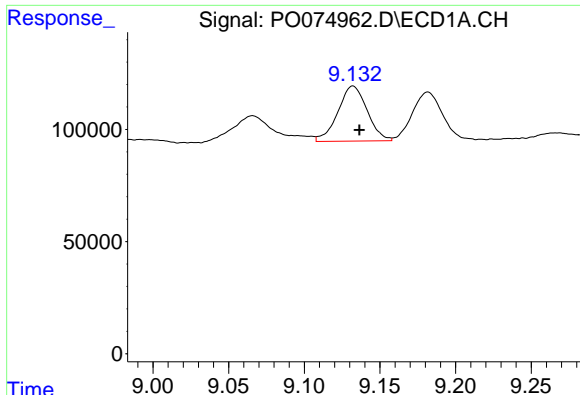
#35 AR-1260-5
 R.T.: 7.895 min
 Delta R.T.: -0.009 min
 Response: 214581
 Conc: 27.00 ng/ml



#36 AR-1262-1
 R.T.: 8.576 min
 Delta R.T.: -0.003 min
 Response: 1243984
 Conc: 139.71 ng/ml



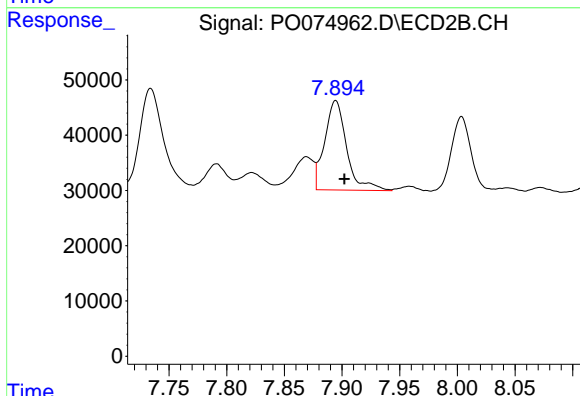
#36 AR-1262-1
 R.T.: 7.347 min
 Delta R.T.: -0.007 min
 Response: 406617
 Conc: 159.80 ng/ml



#37 AR-1262-2

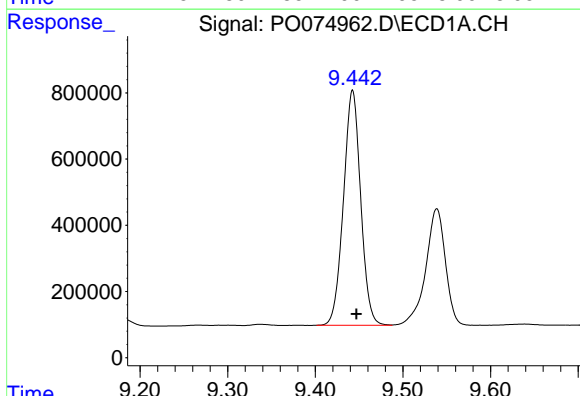
R.T.: 9.132 min
 Delta R.T.: -0.004 min
 Response: 330534
 Conc: 21.59 ng/ml

Instrument :
 ECD_O
 ClientSampled :
 S12-02-CDL



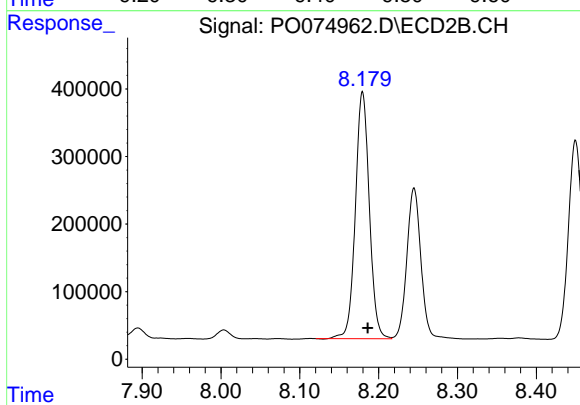
#37 AR-1262-2

R.T.: 7.895 min
 Delta R.T.: -0.008 min
 Response: 214581
 Conc: 23.34 ng/ml



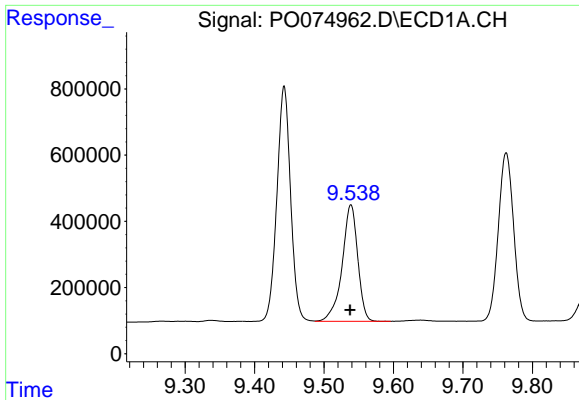
#38 AR-1262-3

R.T.: 9.443 min
 Delta R.T.: -0.004 min
 Response: 9701494
 Conc: 968.62 ng/ml



#38 AR-1262-3

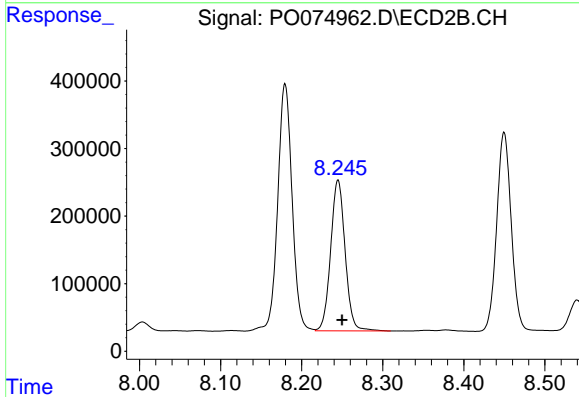
R.T.: 8.180 min
 Delta R.T.: -0.007 min
 Response: 4496319
 Conc: 1137.07 ng/ml



#39 AR-1262-4

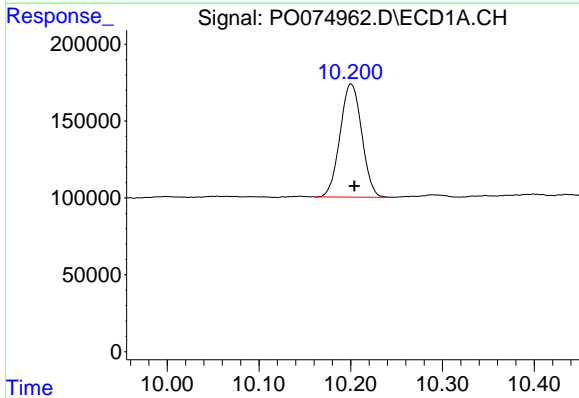
R.T.: 9.539 min
 Delta R.T.: 0.001 min
 Response: 5495686
 Conc: 737.94 ng/ml

Instrument :
 ECD_O
 ClientSampleId :
 S12-02-CDL



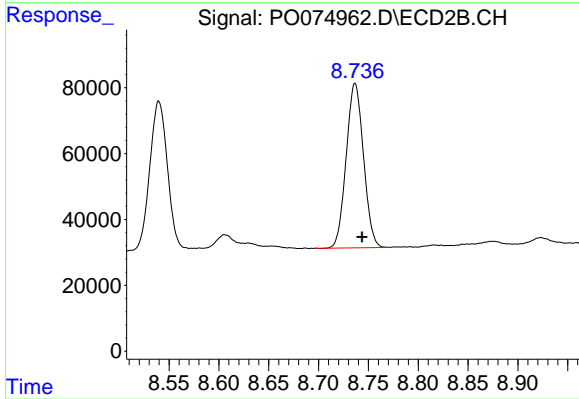
#39 AR-1262-4

R.T.: 8.245 min
 Delta R.T.: -0.005 min
 Response: 2764968
 Conc: 417.34 ng/ml



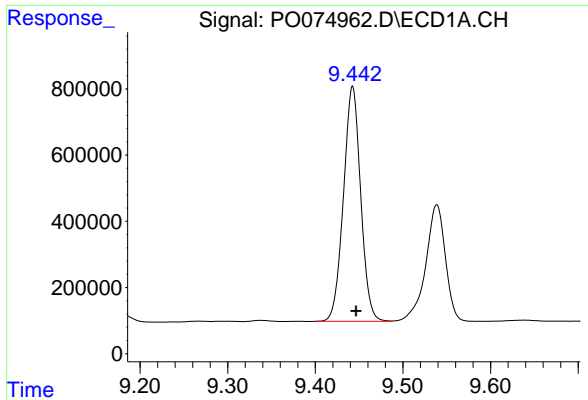
#40 AR-1262-5

R.T.: 10.200 min
 Delta R.T.: -0.004 min
 Response: 1207065
 Conc: 230.73 ng/ml



#40 AR-1262-5

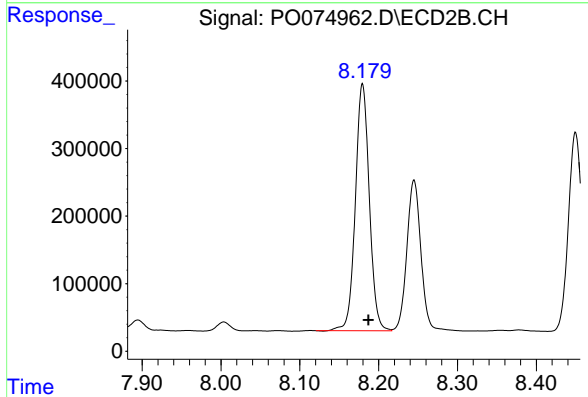
R.T.: 8.737 min
 Delta R.T.: -0.007 min
 Response: 603754
 Conc: 195.55 ng/ml



#41 AR-1268-1

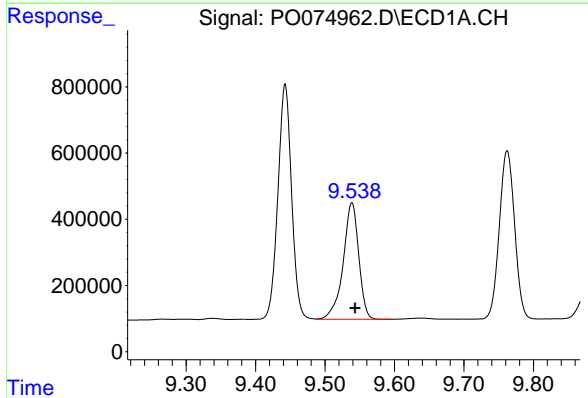
R.T.: 9.443 min
 Delta R.T.: -0.004 min
 Response: 9701494
 Conc: 519.26 ng/ml

Instrument :
 ECD_O
 ClientSampled :
 S12-02-CDL



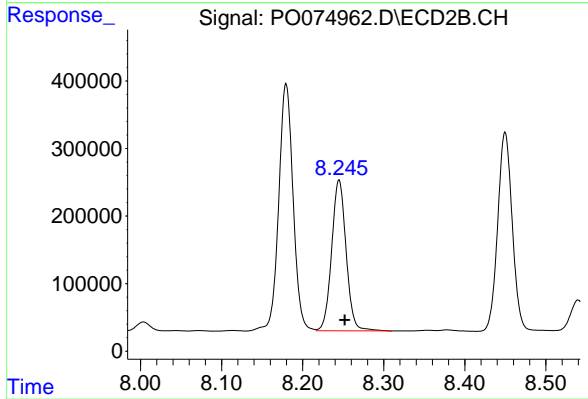
#41 AR-1268-1

R.T.: 8.180 min
 Delta R.T.: -0.007 min
 Response: 4496319
 Conc: 401.65 ng/ml



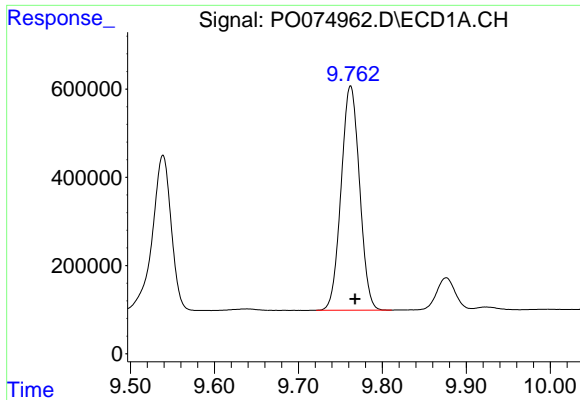
#42 AR-1268-2

R.T.: 9.539 min
 Delta R.T.: -0.005 min
 Response: 5495686
 Conc: 344.45 ng/ml



#42 AR-1268-2

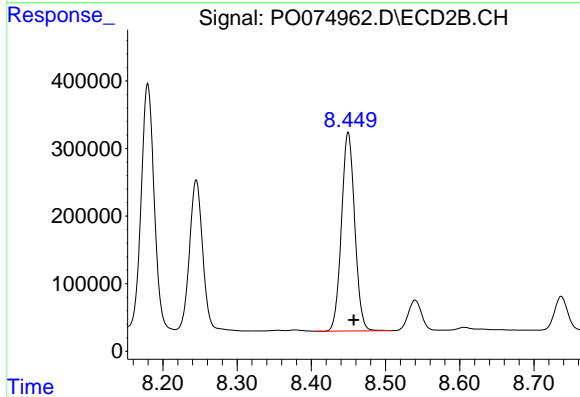
R.T.: 8.245 min
 Delta R.T.: -0.007 min
 Response: 2764968
 Conc: 289.00 ng/ml



#43 AR-1268-3

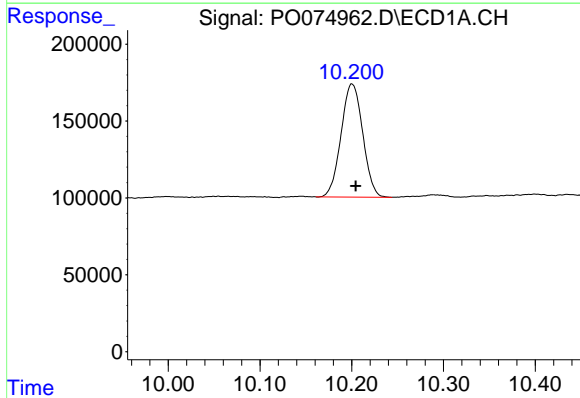
R.T.: 9.762 min
 Delta R.T.: -0.006 min
 Response: 7753591
 Conc: 545.95 ng/ml

Instrument :
 ECD_O
 ClientSampleId :
 S12-02-CDL



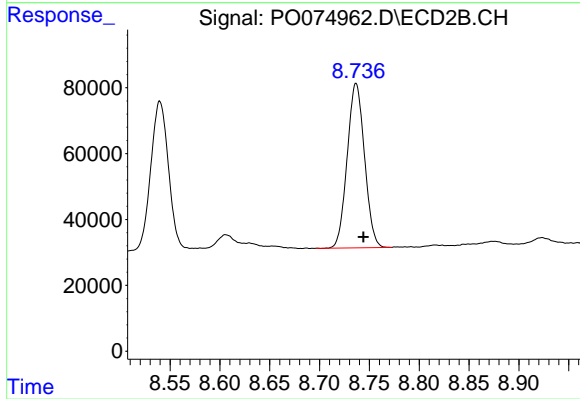
#43 AR-1268-3

R.T.: 8.450 min
 Delta R.T.: -0.007 min
 Response: 3651284
 Conc: 439.44 ng/ml



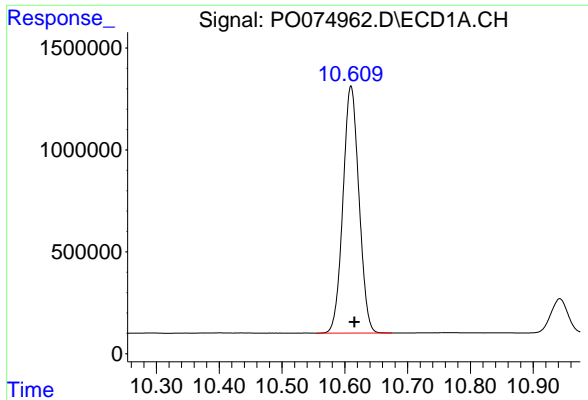
#44 AR-1268-4

R.T.: 10.200 min
 Delta R.T.: -0.004 min
 Response: 1207065
 Conc: 206.04 ng/ml



#44 AR-1268-4

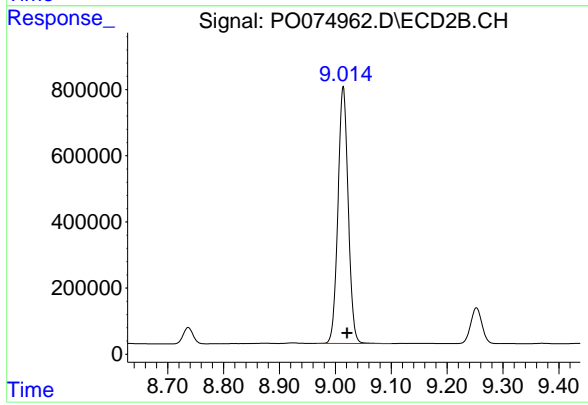
R.T.: 8.737 min
 Delta R.T.: -0.007 min
 Response: 603754
 Conc: 174.03 ng/ml



#45 AR-1268-5

R.T.: 10.610 min
Delta R.T.: -0.006 min
Response: 21440635
Conc: 513.08 ng/ml

Instrument :
ECD_O
ClientSampled :
S12-02-CDL



#45 AR-1268-5

R.T.: 9.014 min
Delta R.T.: -0.007 min
Response: 9871160
Conc: 416.88 ng/ml