

Data Path : Z:\pestpcbsrv\HPCHEM1\ECD_0\Data\P0011921\
 Data File : P0074967.D
 Signal(s) : Signal #1: ECD1A.CH Signal #2: ECD2B.CH
 Acq On : 19 Jan 2021 21:52
 Operator : AJ/MA
 Sample : M1110-11DL 5X
 Misc :
 ALS Vial : 41 Sample Multiplier: 1

Instrument :
 ECD_0
 ClientSampled :
 S17-04-CDL

Integration File signal 1: autoint1.e
 Integration File signal 2: autoint2.e
 Quant Time: Jan 20 03:58:07 2021
 Quant Method : Z:\pestpcbsrv\HPCHEM1\ECD_0\methods\P0011121.M
 Quant Title : GC EXTRACTABLES
 QLast Update : Tue Jan 12 06:02:45 2021
 Response via : Initial Calibration
 Integrator: ChemStation 6890 Scale Mode: Small noise peaks clipped

Volume Inj. : 2 µl
 Signal #1 Phase : ZB-MR2 Signal #2 Phase: ZB-MR2
 Signal #1 Info : 30Mx0.32mmx 0.50µ Signal #2 Info : 30M x 0.32mm x 0.25µm

	Compound	RT#1	RT#2	Resp#1	Resp#2	ng/ml	ng/ml

System Monitoring Compounds							
1)	SA Tetrachlo...	4.928	4.001	430345	225458	4.078	4.008
2)	SA Decachlor...	10.941	9.251	390162	211602	3.844	3.854
Target Compounds							
8)	L2 AR-1221-1	5.182	0.000	210157	0	171.096	N.D. #
10)	L2 AR-1221-3	5.379	4.441	46988	22871	16.678	14.303
11)	L3 AR-1232-1	5.379	4.441	46988	22871	20.516	17.448
24)	L5 AR-1248-4	7.195	0.000	38017	0	8.525	N.D. #
26)	L6 AR-1254-1	7.195f	0.000	38017	0	8.644	N.D. #
27)	L6 AR-1254-2	7.393	6.268	53432	19220	7.845	6.167
28)	L6 AR-1254-3	7.776	6.684	55644	48374	7.933	9.864
29)	L6 AR-1254-4	8.073	6.922	36878	16432	6.081	4.738
30)	L6 AR-1254-5	8.501	7.346	122931	62674	21.162	13.848 #
31)	L7 AR-1260-1	7.944	6.821	34156	34863	6.847	10.928 #
32)	L7 AR-1260-2	8.209	7.017	70927	26914	10.427	6.331 #
33)	L7 AR-1260-3	8.576	7.168	111384	27271	19.433	7.568 #
34)	L7 AR-1260-4	8.823	7.646	207840	85155	37.987	27.195 #
35)	L7 AR-1260-5	9.132	7.894	67353	44656	5.390	5.618
36)	L8 AR-1262-1	8.576	7.346	111384	62674	12.509	24.630 #
37)	L8 AR-1262-2	9.132	7.894	67353	44656	4.399	4.857
38)	L8 AR-1262-3	9.442	8.179	573647	307561	57.274	77.778 #
39)	L8 AR-1262-4	9.538	8.244	375503	219479	50.421	33.128 #
40)	L8 AR-1262-5	10.199	8.736	80907	48260	15.465	15.631
41)	L9 AR-1268-1	9.442	8.179	573647	307561	30.703	27.474
42)	L9 AR-1268-2	9.538	8.244	375503	219479	23.535	22.941
43)	L9 AR-1268-3	9.762	8.449	372376	209493	26.220	25.213
44)	L9 AR-1268-4	10.199	8.736	80907	48260	13.810	13.911
45)	L9 AR-1268-5	10.610	9.013	1001570	500283	23.968	21.128

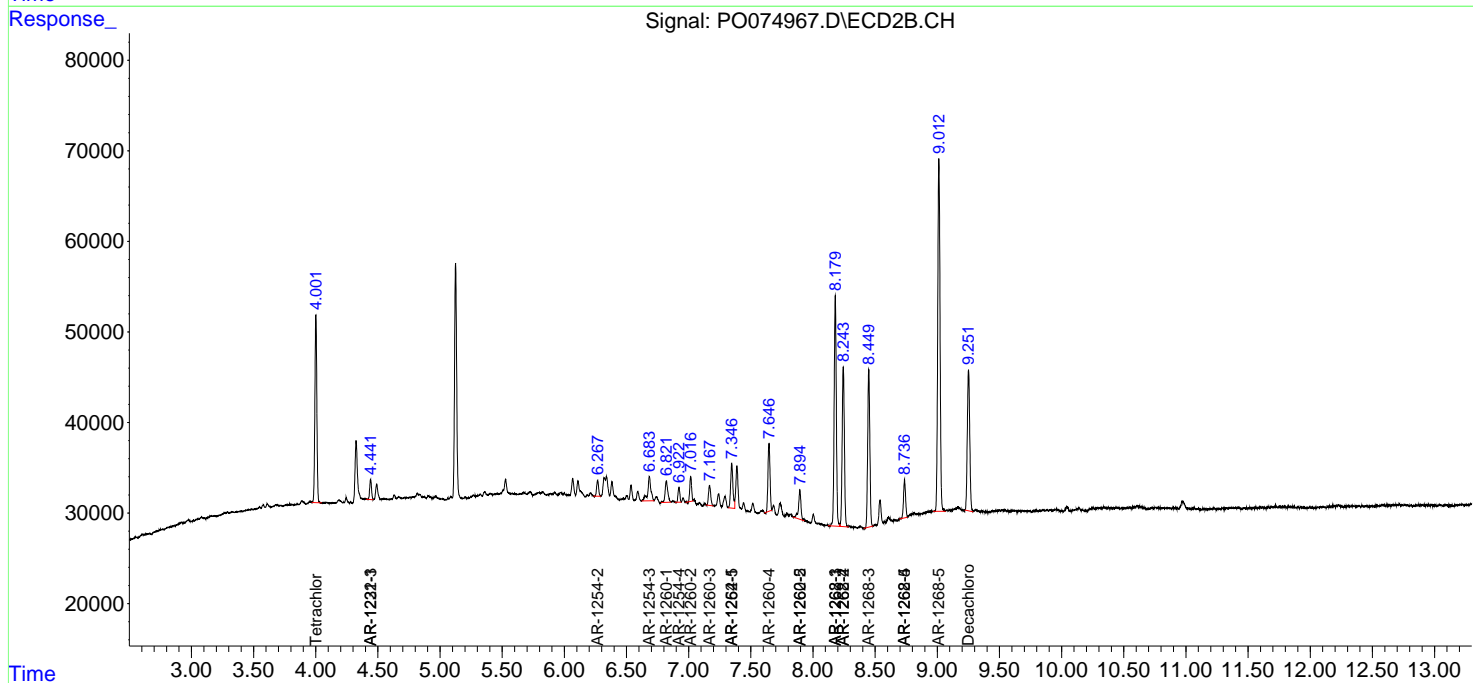
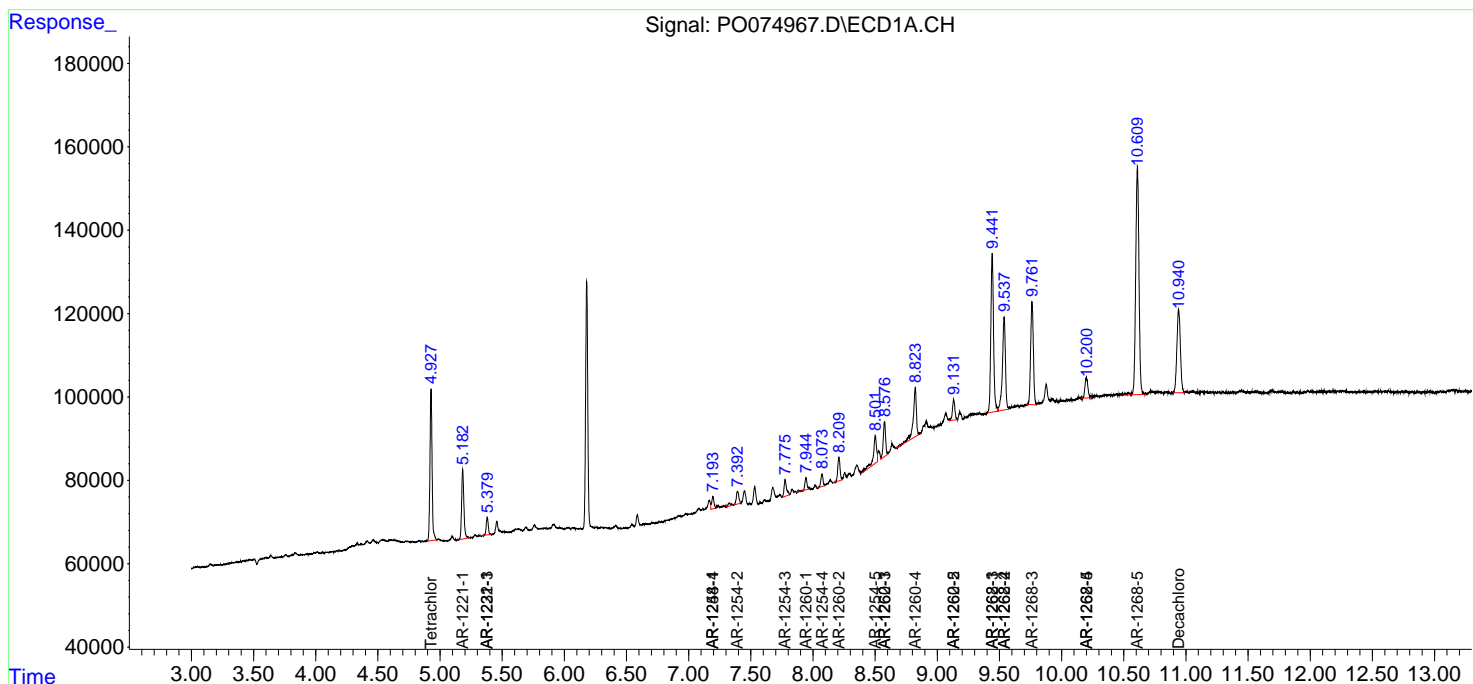
(f)=RT Delta > 1/2 Window (#)=Amounts differ by > 25% (m)=manual int.

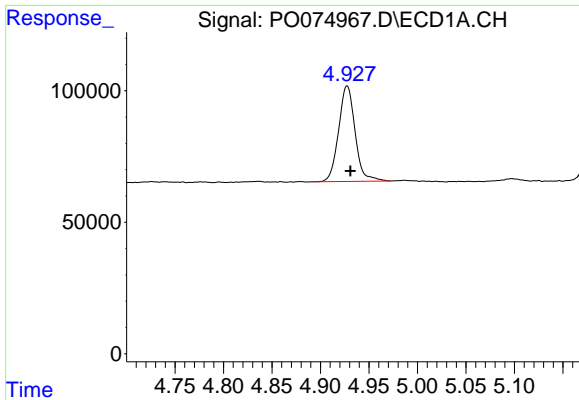
Data Path : Z:\pestpcbsrv\HPCHEM1\ECD_0\Data\PO011921\
 Data File : PO074967.D
 Signal(s) : Signal #1: ECD1A.CH Signal #2: ECD2B.CH
 Acq On : 19 Jan 2021 21:52
 Operator : AJ/MA
 Sample : M1110-11DL 5X
 Misc :
 ALS Vial : 41 Sample Multiplier: 1

Instrument :
 ECD_O
 ClientSampled :
 S17-04-CDL

Integration File signal 1: autoint1.e
 Integration File signal 2: autoint2.e
 Quant Time: Jan 20 03:58:07 2021
 Quant Method : Z:\pestpcbsrv\HPCHEM1\ECD_0\methods\PO011121.M
 Quant Title : GC EXTRACTABLES
 QLast Update : Tue Jan 12 06:02:45 2021
 Response via : Initial Calibration
 Integrator: ChemStation 6890 Scale Mode: Small noise peaks clipped

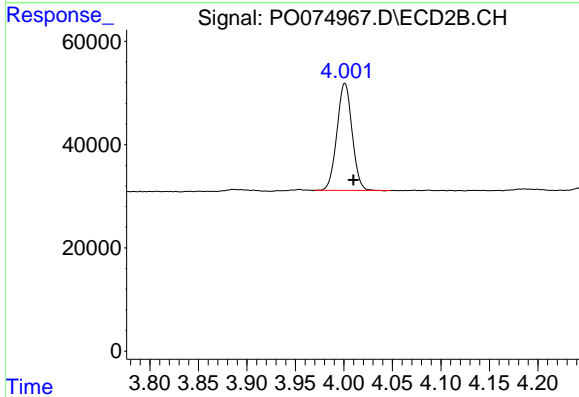
Volume Inj. : 2 µl
 Signal #1 Phase : ZB-MR1 Signal #2 Phase: ZB-MR2
 Signal #1 Info : 30Mx0.32mmx 0.50µ Signal #2 Info : 30M x 0.32mm x 0.25µm



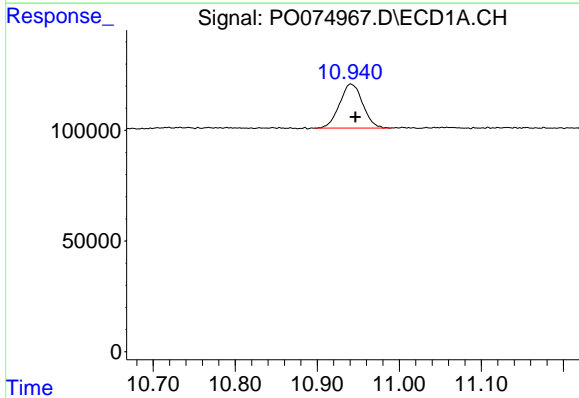


#1 Tetrachloro-m-xylene
 R.T.: 4.928 min
 Delta R.T.: -0.003 min
 Response: 430345
 Conc: 4.08 ng/ml

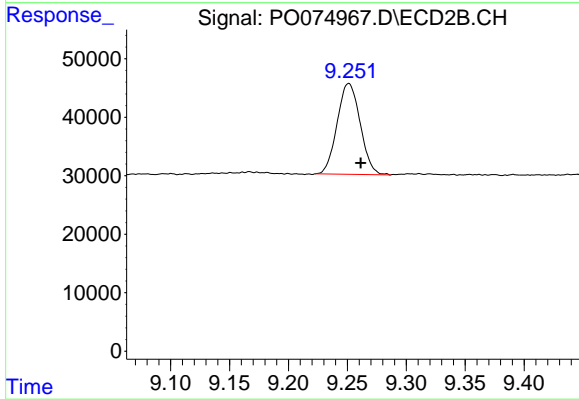
Instrument :
 ECD_O
 ClientSampleId :
 S17-04-CDL



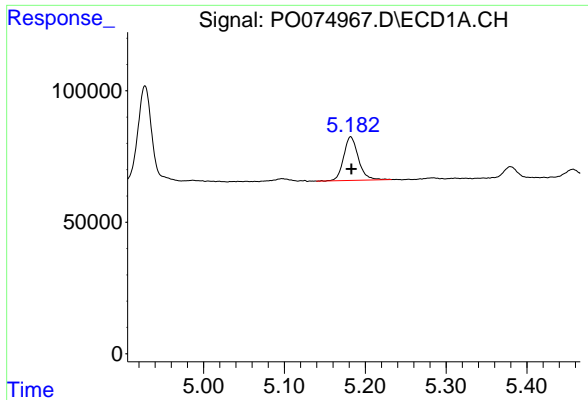
#1 Tetrachloro-m-xylene
 R.T.: 4.001 min
 Delta R.T.: -0.009 min
 Response: 225458
 Conc: 4.01 ng/ml



#2 Decachlorobiphenyl
 R.T.: 10.941 min
 Delta R.T.: -0.005 min
 Response: 390162
 Conc: 3.84 ng/ml

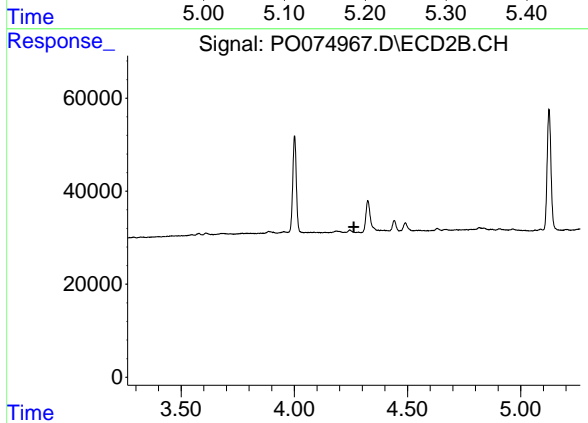


#2 Decachlorobiphenyl
 R.T.: 9.251 min
 Delta R.T.: -0.010 min
 Response: 211602
 Conc: 3.85 ng/ml

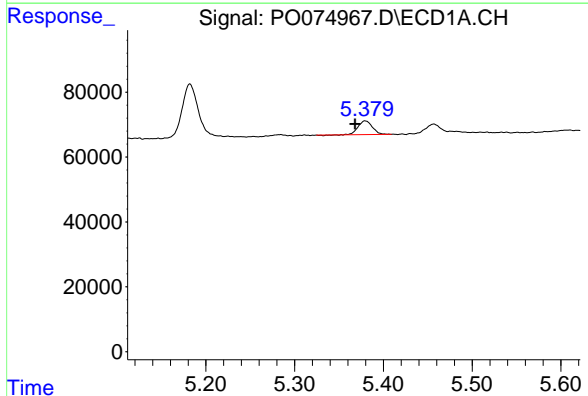


#8 AR-1221-1
 R.T.: 5.182 min
 Delta R.T.: 0.000 min
 Response: 210157
 Conc: 171.10 ng/ml

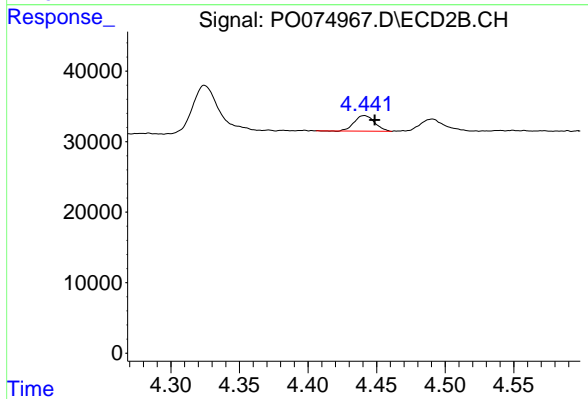
Instrument :
 ECD_O
 ClientSampleId :
 S17-04-CDL



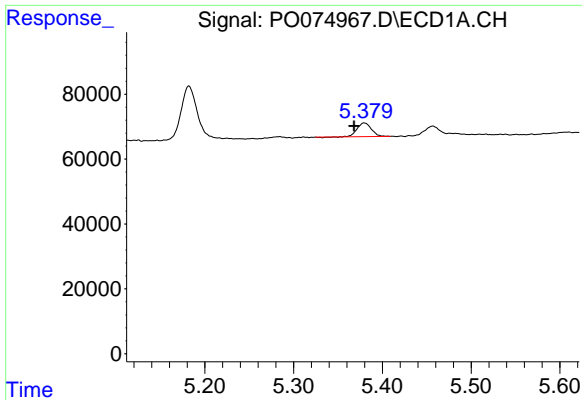
#8 AR-1221-1
 R.T.: 0.000 min
 Exp R.T. : 4.263 min
 Response: 0
 Conc: N.D.



#10 AR-1221-3
 R.T.: 5.379 min
 Delta R.T.: 0.011 min
 Response: 46988
 Conc: 16.68 ng/ml



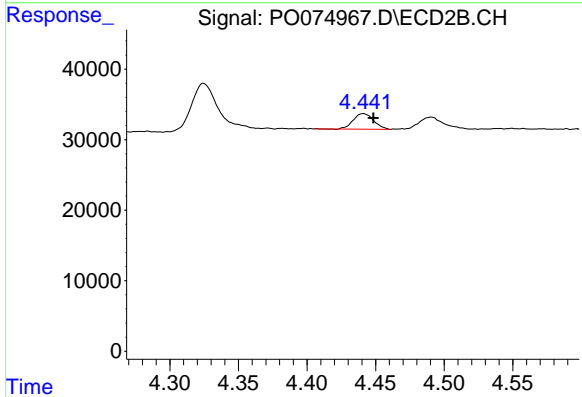
#10 AR-1221-3
 R.T.: 4.441 min
 Delta R.T.: -0.008 min
 Response: 22871
 Conc: 14.30 ng/ml



#11 AR-1232-1

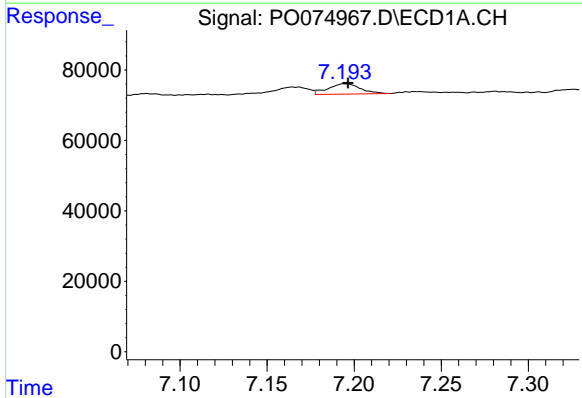
R.T.: 5.379 min
 Delta R.T.: 0.011 min
 Response: 46988
 Conc: 20.52 ng/ml

Instrument :
 ECD_O
 ClientSampled :
 S17-04-CDL



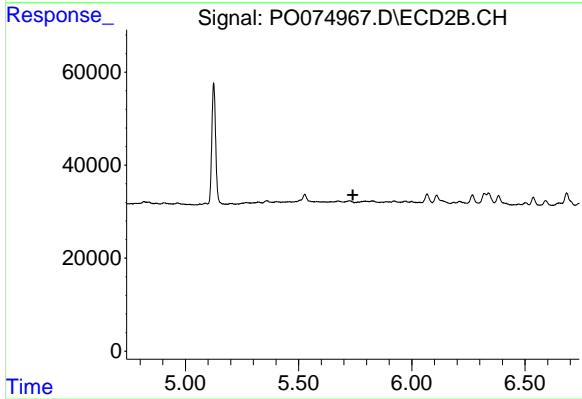
#11 AR-1232-1

R.T.: 4.441 min
 Delta R.T.: -0.007 min
 Response: 22871
 Conc: 17.45 ng/ml



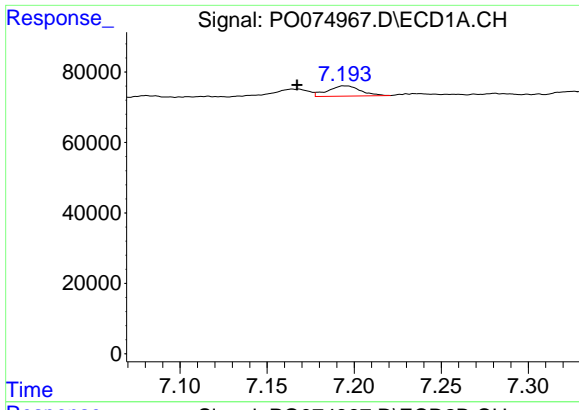
#24 AR-1248-4

R.T.: 7.195 min
 Delta R.T.: -0.002 min
 Response: 38017
 Conc: 8.53 ng/ml



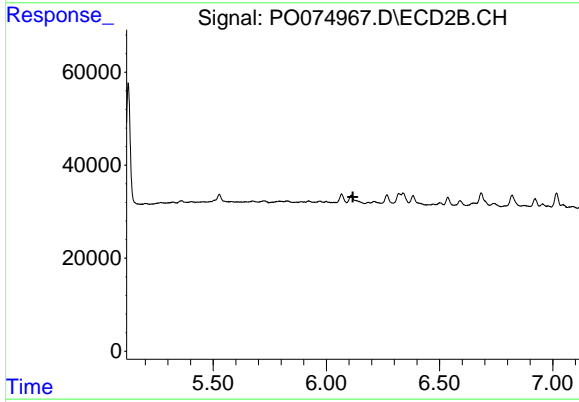
#24 AR-1248-4

R.T.: 0.000 min
 Exp R.T. : 5.740 min
 Response: 0
 Conc: N.D.

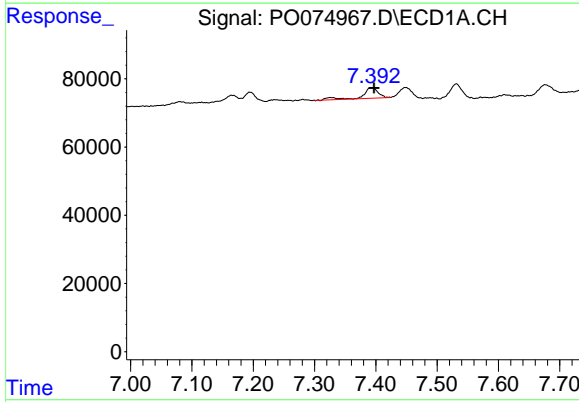


#26 AR-1254-1
 R.T.: 7.195 min
 Delta R.T.: 0.028 min
 Response: 38017
 Conc: 8.64 ng/ml

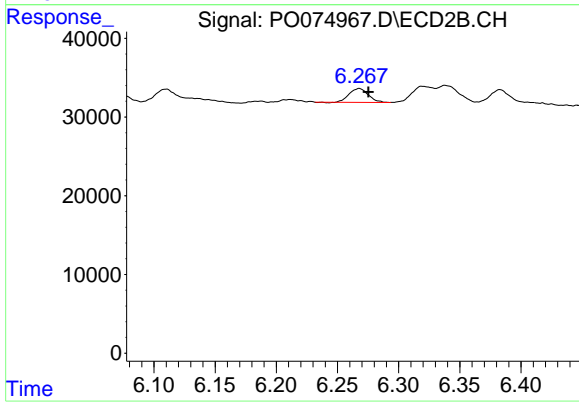
Instrument :
 ECD_O
 ClientSampleId :
 S17-04-CDL



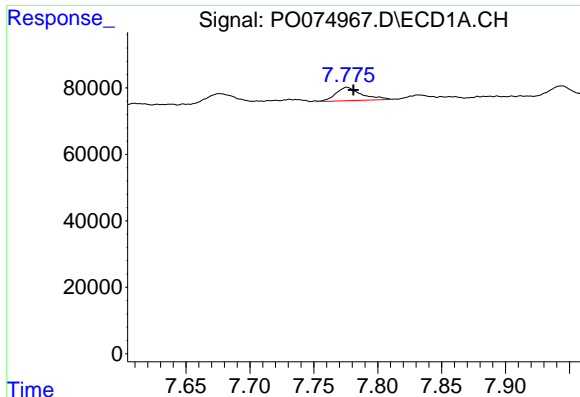
#26 AR-1254-1
 R.T.: 0.000 min
 Exp R.T. : 6.117 min
 Response: 0
 Conc: N.D.



#27 AR-1254-2
 R.T.: 7.393 min
 Delta R.T.: -0.004 min
 Response: 53432
 Conc: 7.85 ng/ml



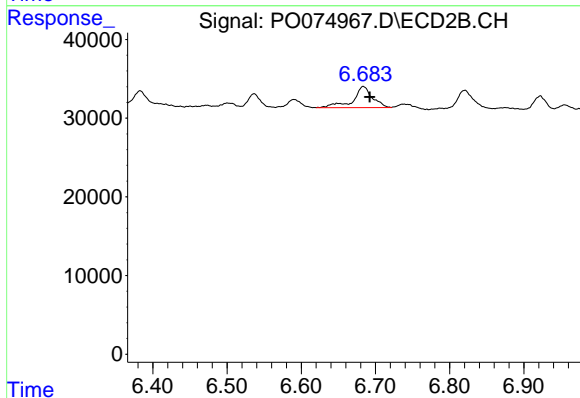
#27 AR-1254-2
 R.T.: 6.268 min
 Delta R.T.: -0.008 min
 Response: 19220
 Conc: 6.17 ng/ml



#28 AR-1254-3

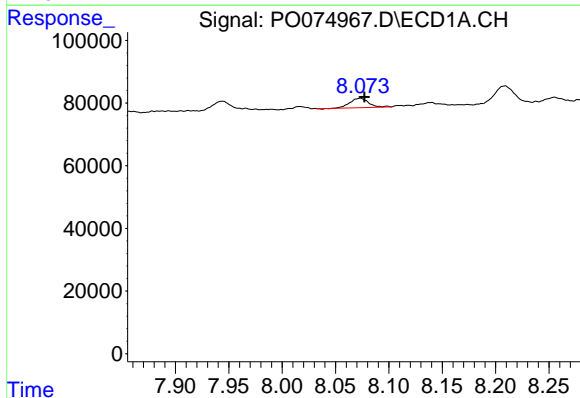
R.T.: 7.776 min
 Delta R.T.: -0.005 min
 Response: 55644
 Conc: 7.93 ng/ml

Instrument :
 ECD_O
 ClientSampleId :
 S17-04-CDL



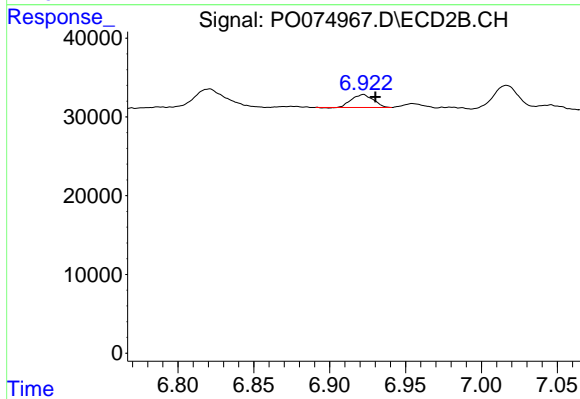
#28 AR-1254-3

R.T.: 6.684 min
 Delta R.T.: -0.009 min
 Response: 48374
 Conc: 9.86 ng/ml



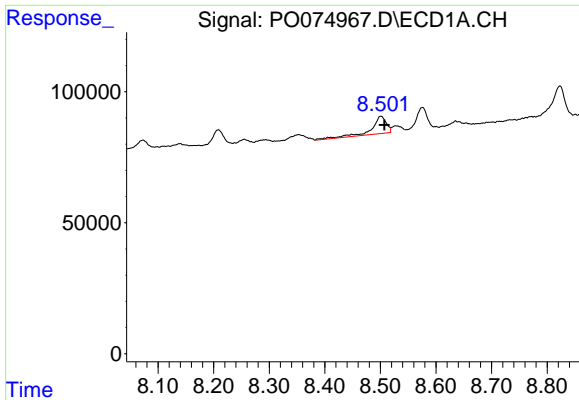
#29 AR-1254-4

R.T.: 8.073 min
 Delta R.T.: -0.004 min
 Response: 36878
 Conc: 6.08 ng/ml



#29 AR-1254-4

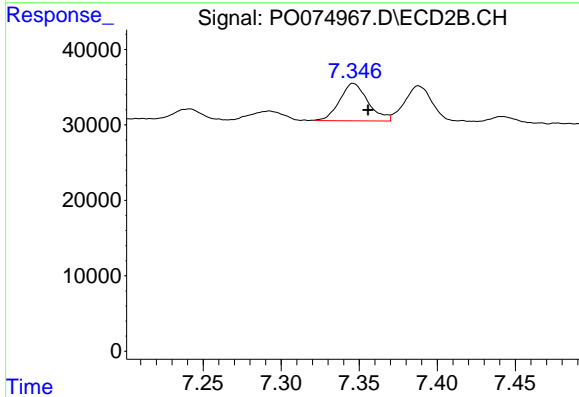
R.T.: 6.922 min
 Delta R.T.: -0.008 min
 Response: 16432
 Conc: 4.74 ng/ml



#30 AR-1254-5

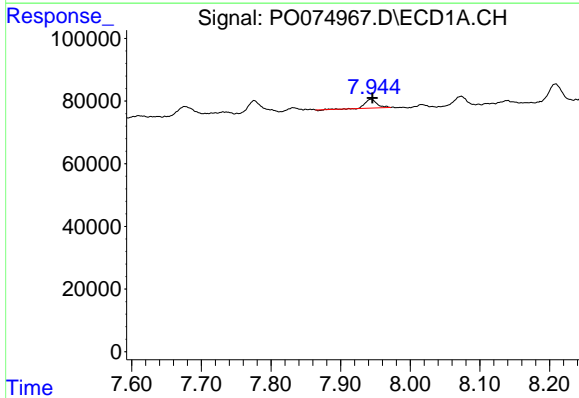
R.T.: 8.501 min
 Delta R.T.: -0.006 min
 Response: 122931
 Conc: 21.16 ng/ml

Instrument :
 ECD_O
 ClientSampleId :
 S17-04-CDL



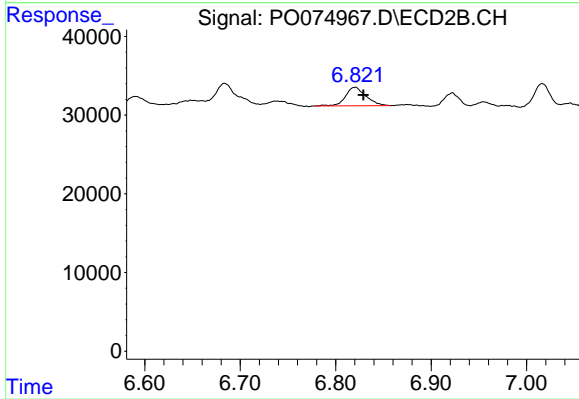
#30 AR-1254-5

R.T.: 7.346 min
 Delta R.T.: -0.010 min
 Response: 62674
 Conc: 13.85 ng/ml



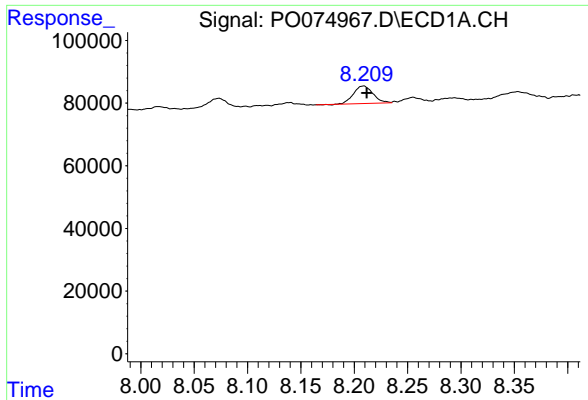
#31 AR-1260-1

R.T.: 7.944 min
 Delta R.T.: -0.002 min
 Response: 34156
 Conc: 6.85 ng/ml



#31 AR-1260-1

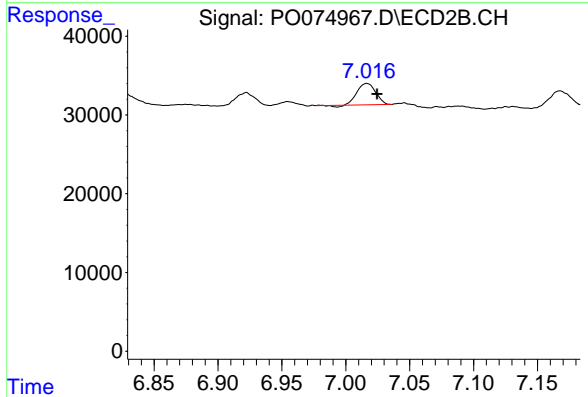
R.T.: 6.821 min
 Delta R.T.: -0.008 min
 Response: 34863
 Conc: 10.93 ng/ml



#32 AR-1260-2

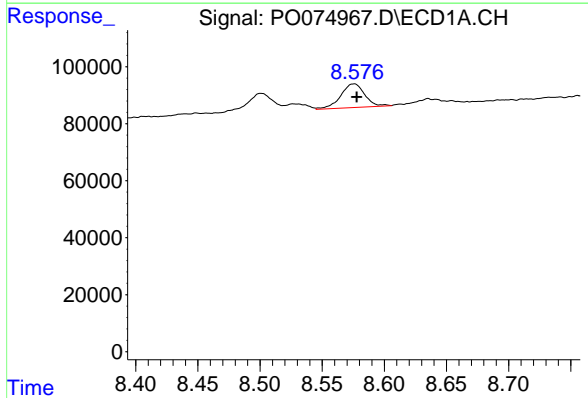
R.T.: 8.209 min
 Delta R.T.: -0.003 min
 Response: 70927
 Conc: 10.43 ng/ml

Instrument :
 ECD_O
ClientSampled :
 S17-04-CDL



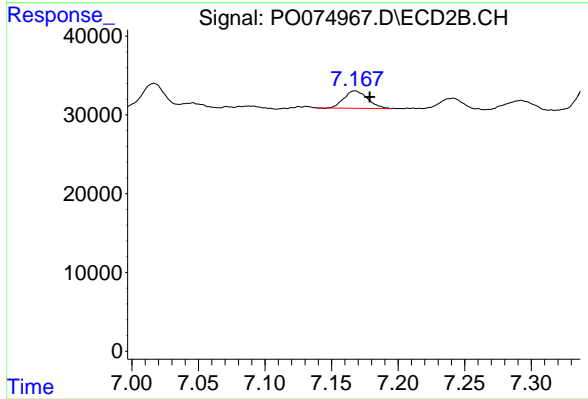
#32 AR-1260-2

R.T.: 7.017 min
 Delta R.T.: -0.008 min
 Response: 26914
 Conc: 6.33 ng/ml



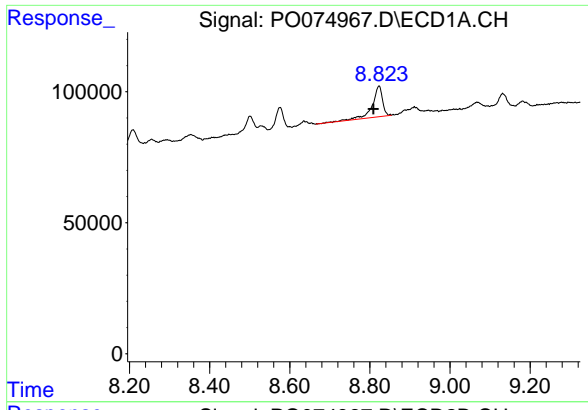
#33 AR-1260-3

R.T.: 8.576 min
 Delta R.T.: -0.002 min
 Response: 111384
 Conc: 19.43 ng/ml



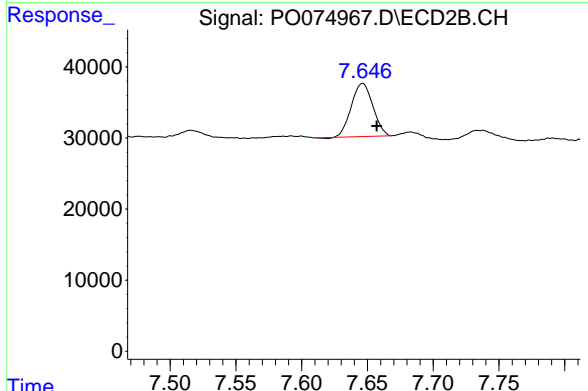
#33 AR-1260-3

R.T.: 7.168 min
 Delta R.T.: -0.011 min
 Response: 27271
 Conc: 7.57 ng/ml

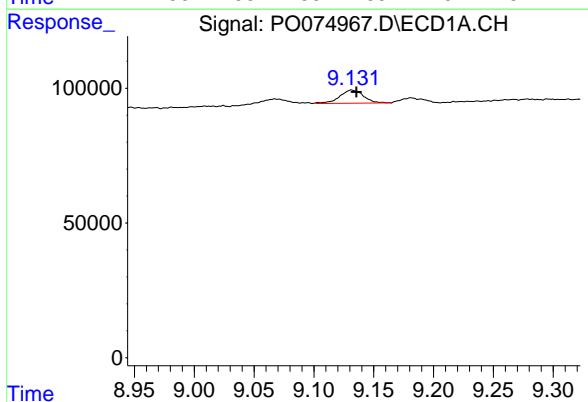


#34 AR-1260-4
 R.T.: 8.823 min
 Delta R.T.: 0.014 min
 Response: 207840
 Conc: 37.99 ng/ml

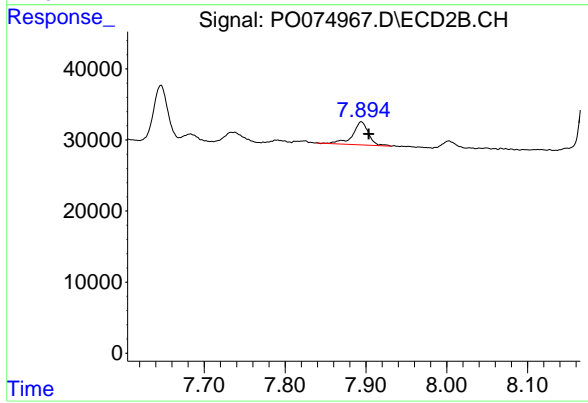
Instrument :
 ECD_O
ClientSampled :
 S17-04-CDL



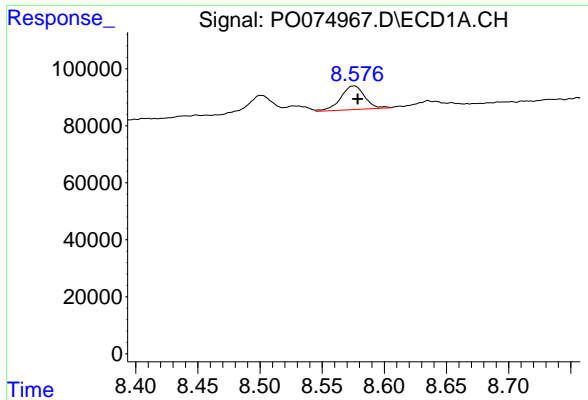
#34 AR-1260-4
 R.T.: 7.646 min
 Delta R.T.: -0.011 min
 Response: 85155
 Conc: 27.19 ng/ml



#35 AR-1260-5
 R.T.: 9.132 min
 Delta R.T.: -0.004 min
 Response: 67353
 Conc: 5.39 ng/ml

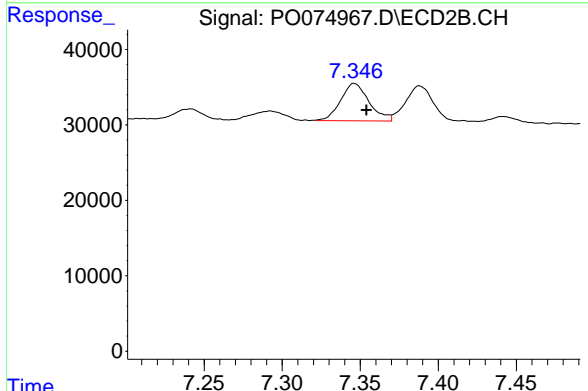


#35 AR-1260-5
 R.T.: 7.894 min
 Delta R.T.: -0.009 min
 Response: 44656
 Conc: 5.62 ng/ml

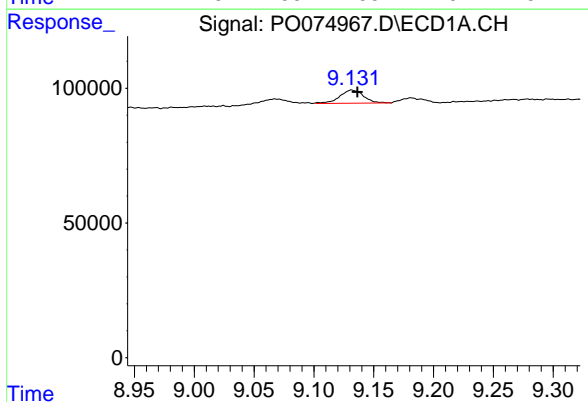


#36 AR-1262-1
 R.T.: 8.576 min
 Delta R.T.: -0.003 min
 Response: 111384
 Conc: 12.51 ng/ml

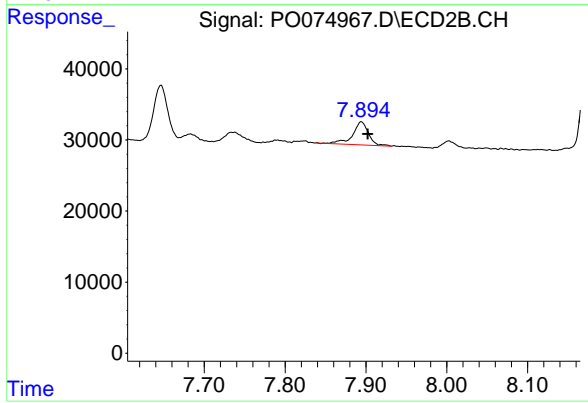
Instrument :
 ECD_O
 ClientSampleId :
 S17-04-CDL



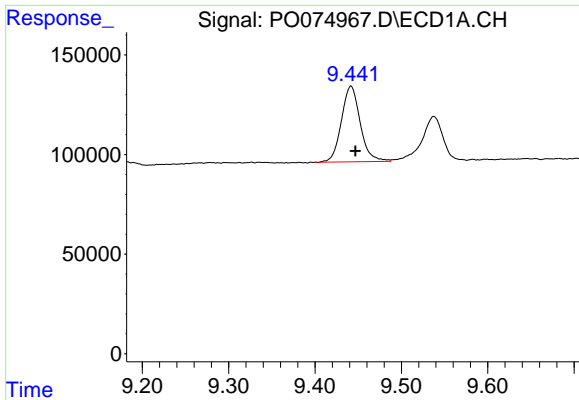
#36 AR-1262-1
 R.T.: 7.346 min
 Delta R.T.: -0.008 min
 Response: 62674
 Conc: 24.63 ng/ml



#37 AR-1262-2
 R.T.: 9.132 min
 Delta R.T.: -0.005 min
 Response: 67353
 Conc: 4.40 ng/ml



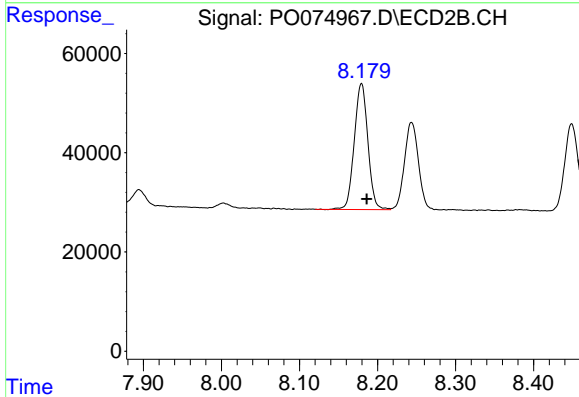
#37 AR-1262-2
 R.T.: 7.894 min
 Delta R.T.: -0.008 min
 Response: 44656
 Conc: 4.86 ng/ml



#38 AR-1262-3

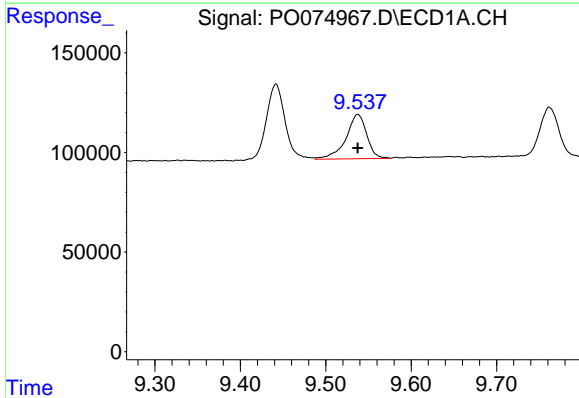
R.T.: 9.442 min
 Delta R.T.: -0.005 min
 Response: 573647
 Conc: 57.27 ng/ml

Instrument :
 ECD_O
 ClientSampleId :
 S17-04-CDL



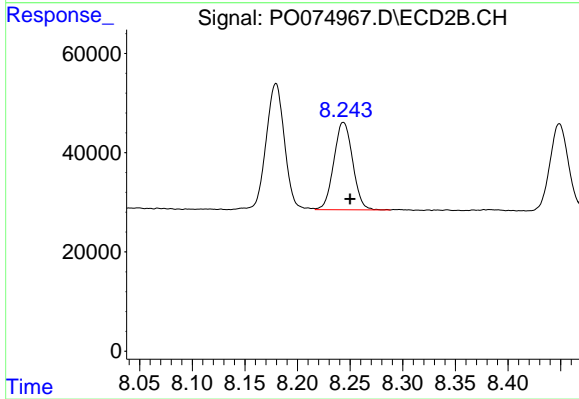
#38 AR-1262-3

R.T.: 8.179 min
 Delta R.T.: -0.007 min
 Response: 307561
 Conc: 77.78 ng/ml



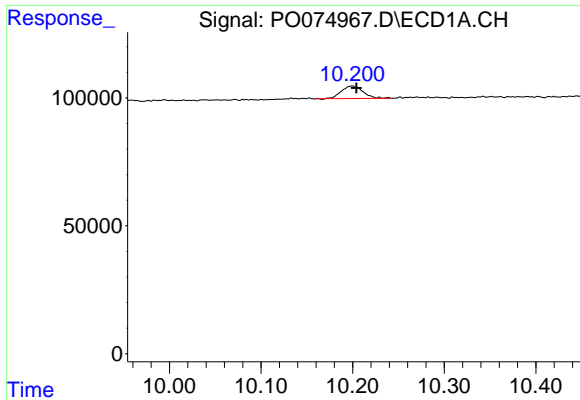
#39 AR-1262-4

R.T.: 9.538 min
 Delta R.T.: 0.000 min
 Response: 375503
 Conc: 50.42 ng/ml



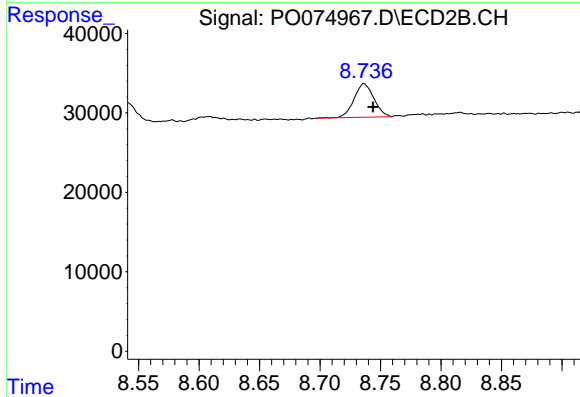
#39 AR-1262-4

R.T.: 8.244 min
 Delta R.T.: -0.006 min
 Response: 219479
 Conc: 33.13 ng/ml

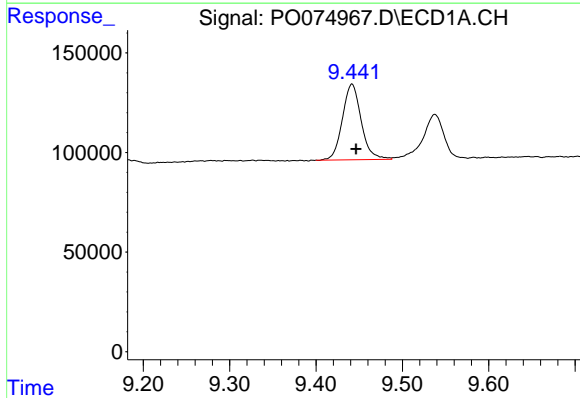


#40 AR-1262-5
 R.T.: 10.199 min
 Delta R.T.: -0.005 min
 Response: 80907
 Conc: 15.47 ng/ml

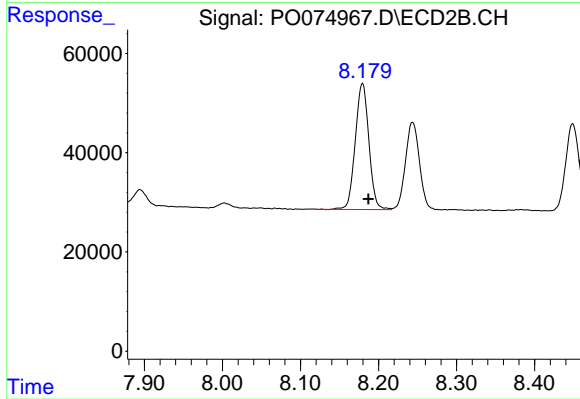
Instrument :
 ECD_O
 ClientSampled :
 S17-04-CDL



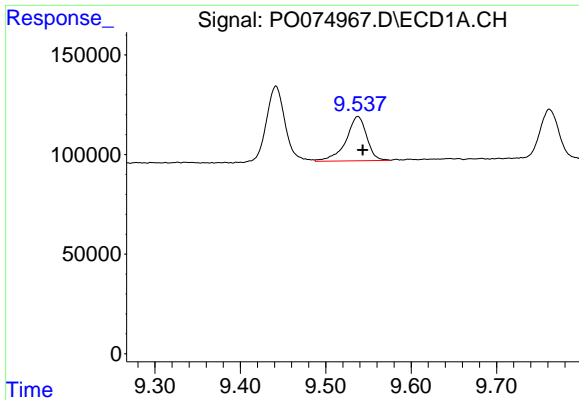
#40 AR-1262-5
 R.T.: 8.736 min
 Delta R.T.: -0.007 min
 Response: 48260
 Conc: 15.63 ng/ml



#41 AR-1268-1
 R.T.: 9.442 min
 Delta R.T.: -0.005 min
 Response: 573647
 Conc: 30.70 ng/ml



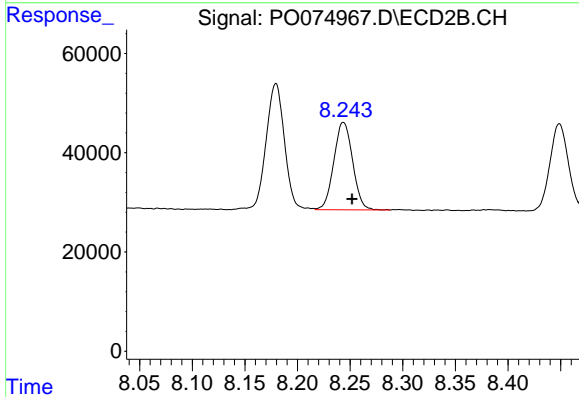
#41 AR-1268-1
 R.T.: 8.179 min
 Delta R.T.: -0.007 min
 Response: 307561
 Conc: 27.47 ng/ml



#42 AR-1268-2

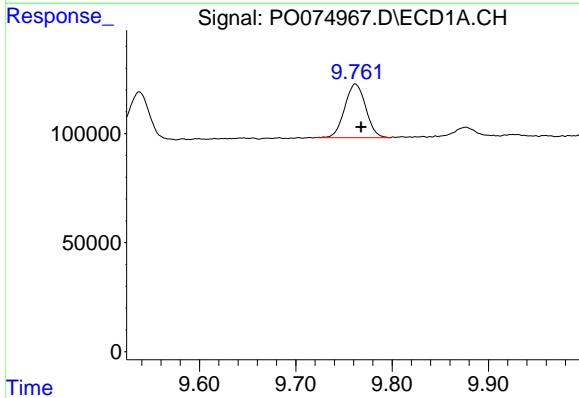
R.T.: 9.538 min
 Delta R.T.: -0.006 min
 Response: 375503
 Conc: 23.54 ng/ml

Instrument :
 ECD_O
 ClientSampleId :
 S17-04-CDL



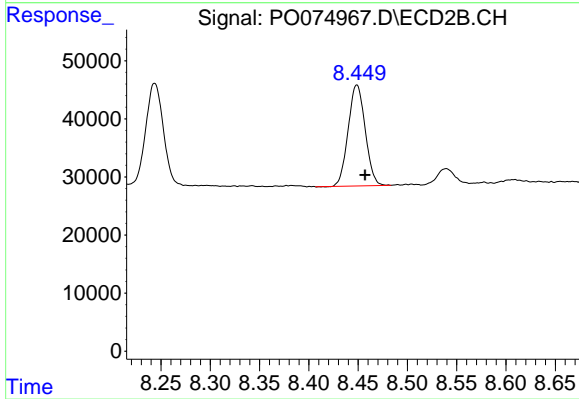
#42 AR-1268-2

R.T.: 8.244 min
 Delta R.T.: -0.008 min
 Response: 219479
 Conc: 22.94 ng/ml



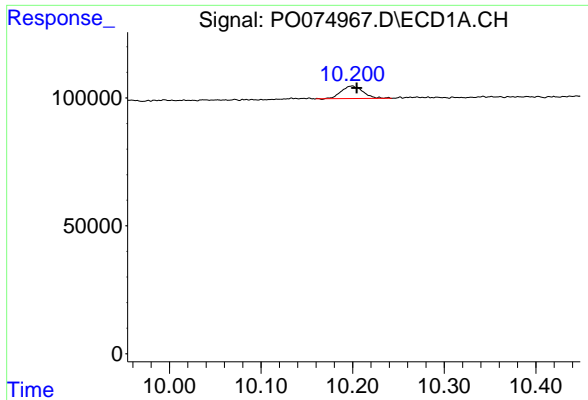
#43 AR-1268-3

R.T.: 9.762 min
 Delta R.T.: -0.006 min
 Response: 372376
 Conc: 26.22 ng/ml



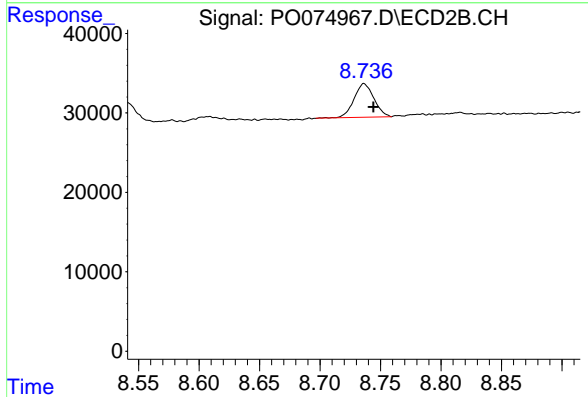
#43 AR-1268-3

R.T.: 8.449 min
 Delta R.T.: -0.008 min
 Response: 209493
 Conc: 25.21 ng/ml

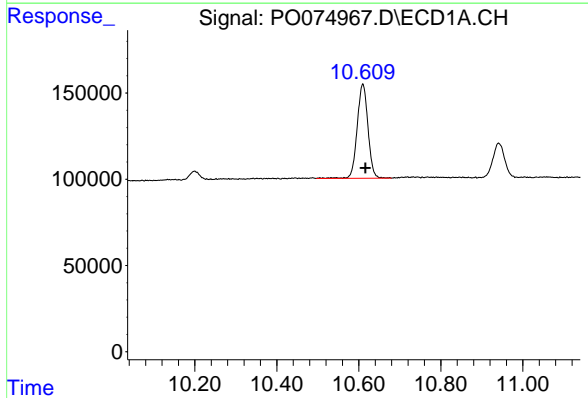


#44 AR-1268-4
 R.T.: 10.199 min
 Delta R.T.: -0.005 min
 Response: 80907
 Conc: 13.81 ng/ml

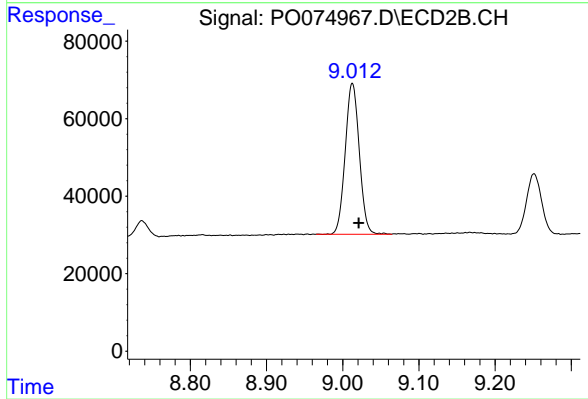
Instrument :
 ECD_O
 ClientSampled :
 S17-04-CDL



#44 AR-1268-4
 R.T.: 8.736 min
 Delta R.T.: -0.008 min
 Response: 48260
 Conc: 13.91 ng/ml



#45 AR-1268-5
 R.T.: 10.610 min
 Delta R.T.: -0.006 min
 Response: 1001570
 Conc: 23.97 ng/ml



#45 AR-1268-5
 R.T.: 9.013 min
 Delta R.T.: -0.009 min
 Response: 500283
 Conc: 21.13 ng/ml