

Data Path : Z:\pestpcbsrv\HPCHEM1\ECD_0\Data\P0012020\
 Data File : P0065681.D
 Signal(s) : Signal #1: ECD1A.CH Signal #2: ECD2B.CH
 Acq On : 20 Jan 2020 20:35
 Operator : DD\AJ
 Sample : L1188-03
 Misc :
 ALS Vial : 28 Sample Multiplier: 1

Instrument :
 ECD_0
 ClientSampleId :
 B2-15-30

Integration File signal 1: autoint1.e
 Integration File signal 2: autoint2.e
 Quant Time: Jan 21 03:05:57 2020
 Quant Method : Z:\pestpcbsrv\HPCHEM1\ECD_0\methods\P0010420.M
 Quant Title : GC EXTRACTABLES
 QLast Update : Sat Jan 04 04:01:28 2020
 Response via : Initial Calibration
 Integrator: ChemStation 6890 Scale Mode: Small noise peaks clipped

Volume Inj. : 2 µl
 Signal #1 Phase : ZB-MR1 Signal #2 Phase: ZB-MR2
 Signal #1 Info : 30Mx0.32mmx 0.50µ Signal #2 Info : 30M x 0.32mm x 0.25µm

Compound	RT#1	RT#2	Resp#1	Resp#2	ng/ml	ng/ml

System Monitoring Compounds						
1) SA Tetrachlo...	4.156	3.431	571064	682300	31.273	31.017
2) SA Decachlor...	9.654	8.332	762615	930579	22.508	22.440

Target Compounds

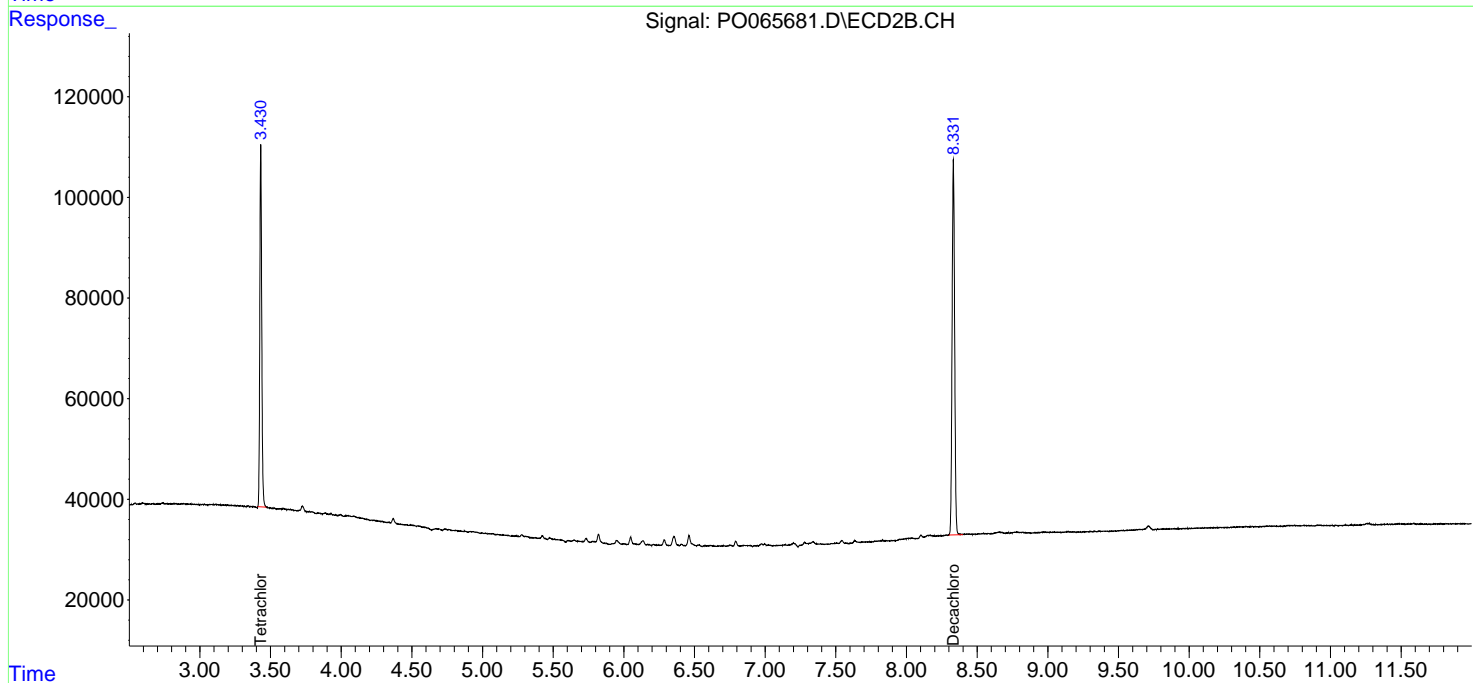
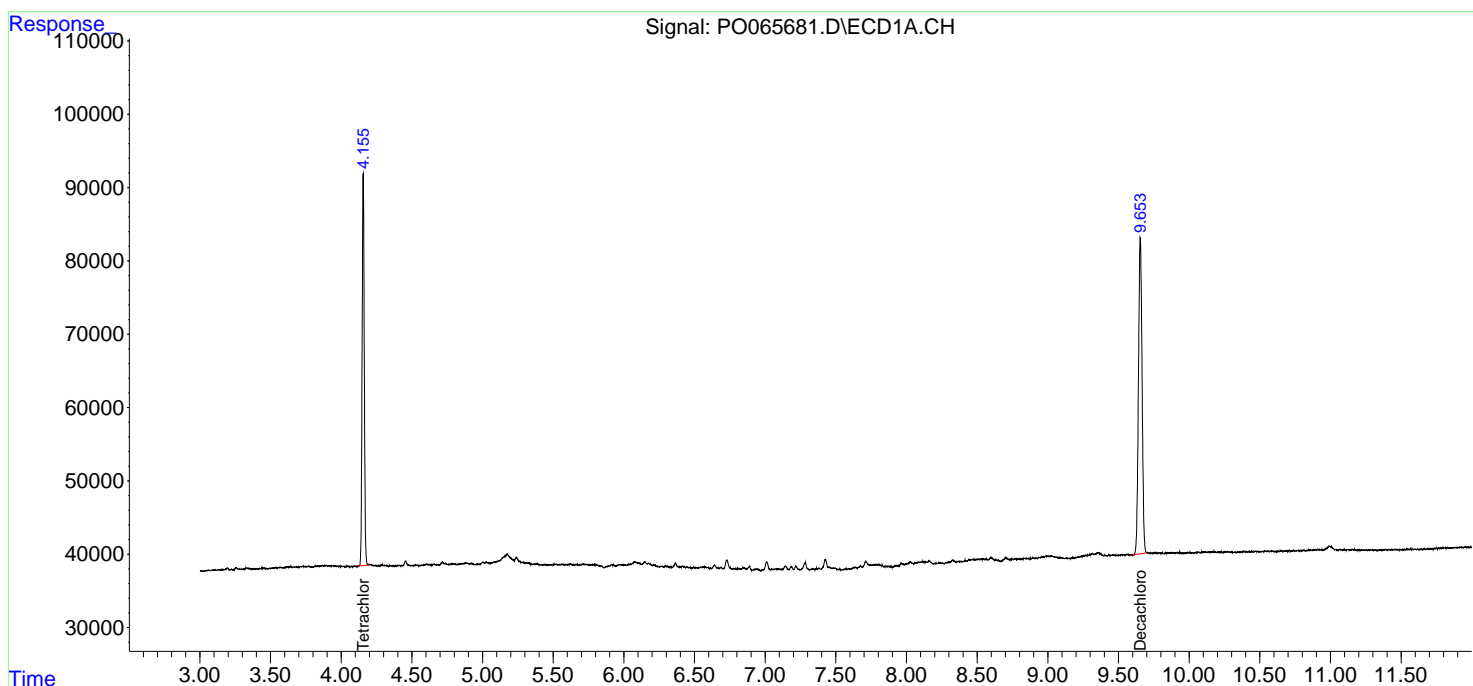
(f)=RT Delta > 1/2 Window (#)=Amounts differ by > 25% (m)=manual int.

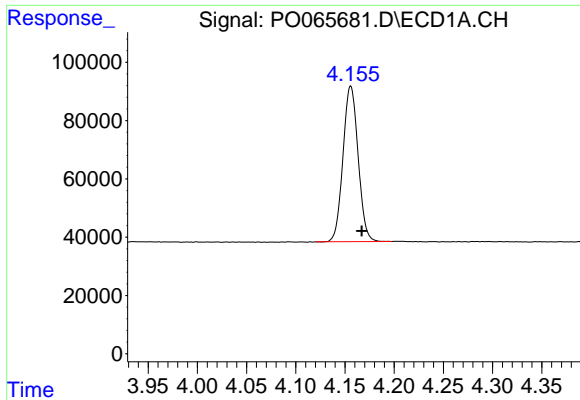
Data Path : Z:\pestpcbsrv\HPCHEM1\ECD_O\Data\P0012020\
 Data File : P0065681.D
 Signal(s) : Signal #1: ECD1A.CH Signal #2: ECD2B.CH
 Acq On : 20 Jan 2020 20:35
 Operator : DD\AJ
 Sample : L1188-03
 Misc :
 ALS Vial : 28 Sample Multiplier: 1

Instrument :
 ECD_O
 ClientSampleId :
 B2-15-30

Integration File signal 1: autoint1.e
 Integration File signal 2: autoint2.e
 Quant Time: Jan 21 03:05:57 2020
 Quant Method : Z:\pestpcbsrv\HPCHEM1\ECD_O\methods\P0010420.M
 Quant Title : GC EXTRACTABLES
 QLast Update : Sat Jan 04 04:01:28 2020
 Response via : Initial Calibration
 Integrator: ChemStation 6890 Scale Mode: Small noise peaks clipped

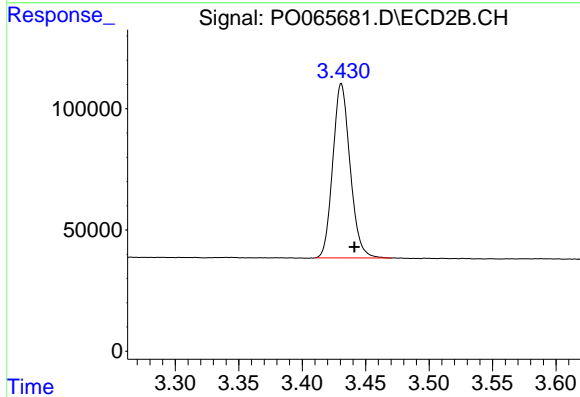
Volume Inj. : 2 µl
 Signal #1 Phase : ZB-MR1 Signal #2 Phase: ZB-MR2
 Signal #1 Info : 30Mx0.32mmx 0.50µ Signal #2 Info : 30M x 0.32mm x 0.25µm



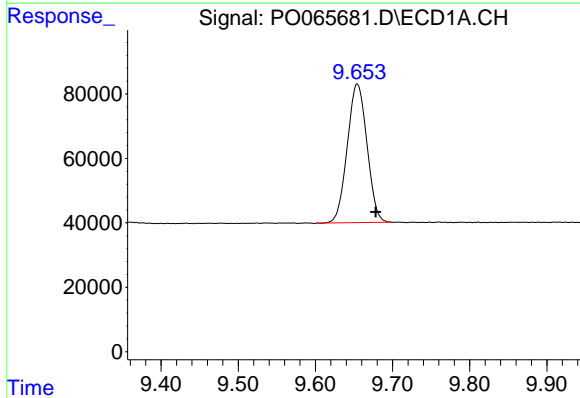


#1 Tetrachloro-m-xylene
 R.T.: 4.156 min
 Delta R.T.: -0.011 min
 Response: 571064
 Conc: 31.27 ng/ml

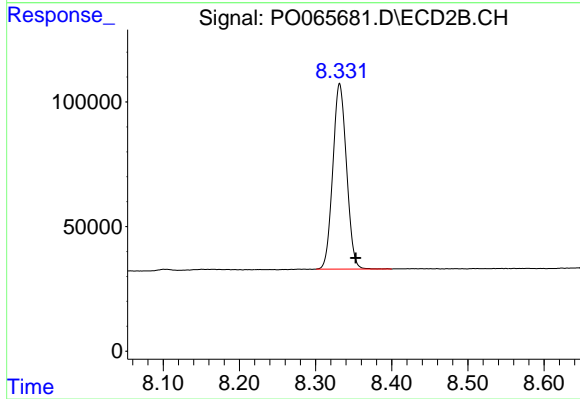
Instrument :
 ECD_O
 ClientSampled :
 B2-15-30



#1 Tetrachloro-m-xylene
 R.T.: 3.431 min
 Delta R.T.: -0.010 min
 Response: 682300
 Conc: 31.02 ng/ml



#2 Decachlorobiphenyl
 R.T.: 9.654 min
 Delta R.T.: -0.024 min
 Response: 762615
 Conc: 22.51 ng/ml



#2 Decachlorobiphenyl
 R.T.: 8.332 min
 Delta R.T.: -0.021 min
 Response: 930579
 Conc: 22.44 ng/ml