

Data Path : Z:\pestpcbsrv\HPCHEM1\ECD_O\Data\P0012023\
 Data File : P0092212.D
 Signal(s) : Signal #1: ECD1A.ch Signal #2: ECD2B.ch
 Acq On : 20 Jan 2023 22:12
 Operator : YP/AJ
 Sample : 01238-01 10X
 Misc :
 ALS Vial : 24 Sample Multiplier: 1

Instrument :
 ECD_O
 ClientSampleId :

Integration File signal 1: autoint1.e
 Integration File signal 2: autoint2.e
 Quant Time: Jan 23 00:06:28 2023
 Quant Method : Z:\pestpcbsrv\HPCHEM1\ECD_O\methods\P0011023.M
 Quant Title : GC EXTRACTABLES
 QLast Update : Wed Jan 11 04:41:00 2023
 Response via : Initial Calibration
 Integrator: ChemStation

Volume Inj. : 2 µl
 Signal #1 Phase : ZB-MR1 Signal #2 Phase: ZB-MR2
 Signal #1 Info : 30Mx0.32mmx 0.50µ Signal #2 Info : 30M x 0.32mm x 0.25µm

Compound	RT#1	RT#2	Resp#1	Resp#2	ng/ml	ng/ml
System Monitoring Compounds						
1) SA Tetrachlo...	4.446	3.645	6845519	5411652	2.454	3.898 #
2) SA Decachlor...	10.371	8.694	5447266	2505384	2.782	2.826
Target Compounds						
3) L1 AR-1016-1	5.678f	4.751	2396560	327138	28.197	7.493 #
4) L1 AR-1016-2	5.678	4.751	2396560	327138	19.054	5.196 #
5) L1 AR-1016-3	5.721	5.004f	848384	234407	10.666	6.991 #
6) L1 AR-1016-4	5.750f	5.004	1000148	234407	16.277	7.891 #
7) L1 AR-1016-5	6.157f	5.265f	1381101	383997	21.231	10.419 #
8) L2 AR-1221-1	4.658	3.870	4850552	280497	137.262	15.849 #
9) L2 AR-1221-2	4.769	3.920	2158748	1392751	84.992	106.632 #
10) L2 AR-1221-3	4.802	3.985f	4997231	641499	64.393	16.543 #
11) L3 AR-1232-1	4.802	3.985f	4997231	641499	74.573	18.793 #
12) L3 AR-1232-2	5.348	4.751	4881987	327138	150.428	11.304 #
13) L3 AR-1232-3	5.678	5.004f	2396560	234407	41.812	15.530 #
14) L3 AR-1232-4	5.750f	5.004	1000148	234407	37.007	15.558 #
15) L3 AR-1232-5	5.902	5.265f	2796997	383997	116.585	23.481 #
16) L4 AR-1242-1	5.678f	4.751	2396560	327138	33.584	8.763 #
17) L4 AR-1242-2	5.678	4.751	2396560	327138	22.681	6.155 #
18) L4 AR-1242-3	5.721	5.004f	848384	234407	12.587	8.192 #
19) L4 AR-1242-4	5.750f	5.004	1000148	234407	19.294	7.626 #
20) L4 AR-1242-5	6.530f	5.615f	1261116	491867	24.908	14.915 #
21) L5 AR-1248-1	5.678f	4.751	2396560	327138	43.788	11.471 #
22) L5 AR-1248-2	5.902	5.004	2796997	234407	32.336	5.285 #
23) L5 AR-1248-3	6.157f	5.004	1381101	234407	15.012	5.145 #
24) L5 AR-1248-4	6.530	0.000	1261116	0	14.178	N.D. #
25) L5 AR-1248-5	6.530f	5.615	1261116	491867	14.578	11.121
26) L6 AR-1254-1	6.530	5.615f	1261116	491867	12.189	6.662 #
27) L6 AR-1254-2	6.734	0.000	745814	0	4.920	N.D. #
28) L6 AR-1254-3	7.141f	6.139f	937379	147955	6.269	1.524 #
29) L6 AR-1254-4	0.000	6.374f	0	650473	N.D.	13.421 #
30) L6 AR-1254-5	7.774f	6.747	1759744	346375	14.185	4.498 #
32) L7 AR-1260-2	7.565f	6.425	2540040	195326	19.773	2.667 #
33) L7 AR-1260-3	7.878	6.579	2585430	607139	24.794	8.489 #
34) L7 AR-1260-4	8.131	7.088	1829137	620116	15.843	11.509 #
35) L7 AR-1260-5	0.000	7.310	0	761386	N.D.	6.785 #
36) L8 AR-1262-1	7.878	6.816	2585430	838768	20.058	10.949 #
37) L8 AR-1262-2	0.000	7.310	0	761386	N.D.	6.576 #
38) L8 AR-1262-3	8.788	7.550	889414	335923	6.306	7.512
39) L8 AR-1262-4	8.845	0.000	3081253	0	36.559	N.D. #
40) L8 AR-1262-5	0.000	8.149	0	713085	N.D.	19.570 #
41) L9 AR-1268-1	8.788	7.550f	889414	335923	3.100	2.204 #
42) L9 AR-1268-2	8.845	0.000	3081253	0	10.600	N.D. #

Data Path : Z:\pestpcbsrv\HPCHEM1\ECD_0\Data\P0012023\
 Data File : P0092212.D
 Signal(s) : Signal #1: ECD1A.ch Signal #2: ECD2B.ch
 Acq On : 20 Jan 2023 22:12
 Operator : YP/AJ
 Sample : 01238-01 10X
 Misc :
 ALS Vial : 24 Sample Multiplier: 1

Instrument :
 ECD_0
 ClientSampleId :

Integration File signal 1: autoint1.e
 Integration File signal 2: autoint2.e
 Quant Time: Jan 23 00:06:28 2023
 Quant Method : Z:\pestpcbsrv\HPCHEM1\ECD_0\methods\P0011023.M
 Quant Title : GC EXTRACTABLES
 QLast Update : Wed Jan 11 04:41:00 2023
 Response via : Initial Calibration
 Integrator: ChemStation

Volume Inj. : 2 µl
 Signal #1 Phase : ZB-MR1 Signal #2 Phase: ZB-MR2
 Signal #1 Info : 30Mx0.32mmx 0.50µ Signal #2 Info : 30M x 0.32mm x 0.25µm

	Compound	RT#1	RT#2	Resp#1	Resp#2	ng/ml	ng/ml
43)	L9 AR-1268-3	9.088	7.879	2409870	262993	10.164	2.071 #
44)	L9 AR-1268-4	0.000	8.149	0	713085	N.D.	15.056 #
45)	L9 AR-1268-5	0.000	8.435	0	467607	N.D.	1.254 #

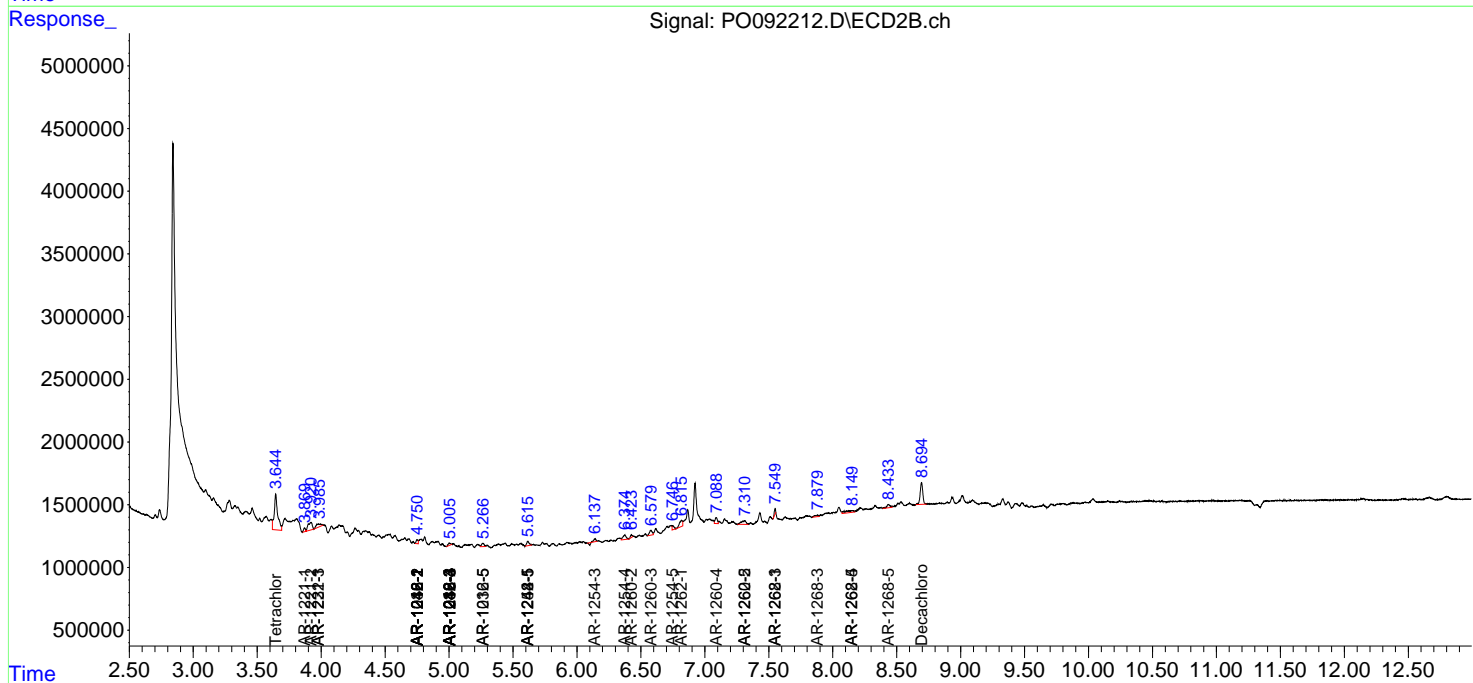
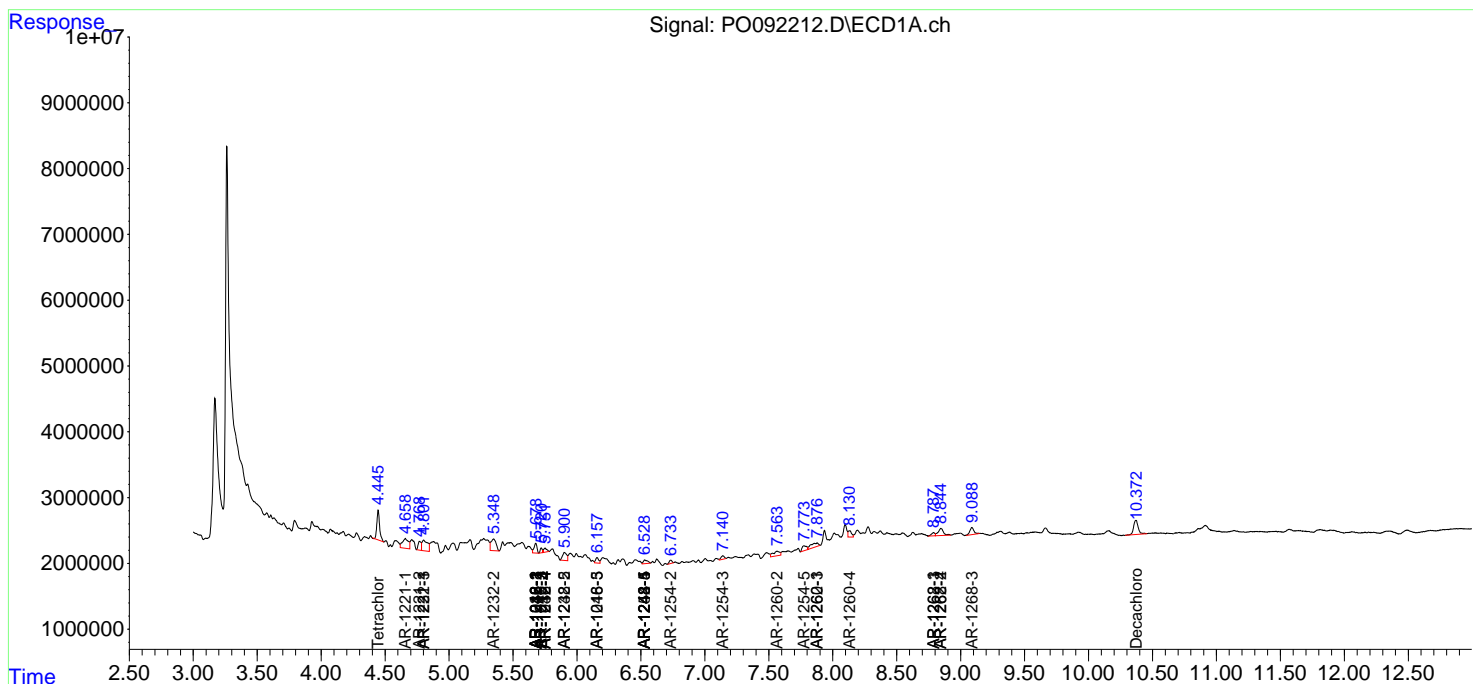
(f)=RT Delta > 1/2 Window (#)=Amounts differ by > 25% (m)=manual int.

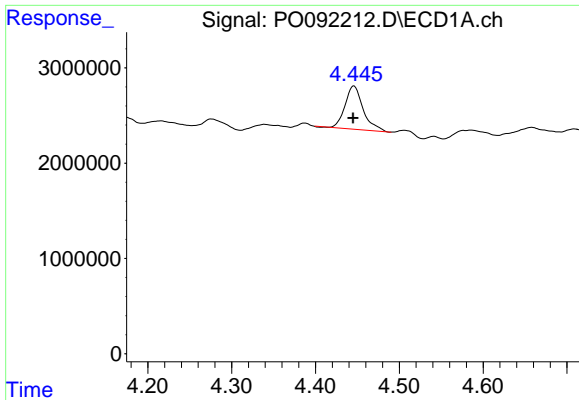
Data Path : Z:\pestpcbsrv\HPCHEM1\ECD_O\Data\PO012023\
 Data File : PO092212.D
 Signal(s) : Signal #1: ECD1A.ch Signal #2: ECD2B.ch
 Acq On : 20 Jan 2023 22:12
 Operator : YP/AJ
 Sample : 01238-01 10X
 Misc :
 ALS Vial : 24 Sample Multiplier: 1

Instrument :
 ECD_O
 ClientSampleId :

Integration File signal 1: autoint1.e
 Integration File signal 2: autoint2.e
 Quant Time: Jan 23 00:06:28 2023
 Quant Method : Z:\pestpcbsrv\HPCHEM1\ECD_O\methods\PO011023.M
 Quant Title : GC EXTRACTABLES
 QLast Update : Wed Jan 11 04:41:00 2023
 Response via : Initial Calibration
 Integrator: ChemStation

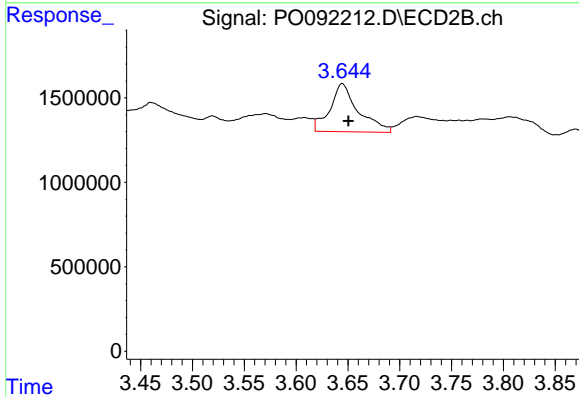
Volume Inj. : 2 µl
 Signal #1 Phase : ZB-MR1 Signal #2 Phase: ZB-MR2
 Signal #1 Info : 30Mx0.32mmx 0.50µ Signal #2 Info : 30M x 0.32mm x 0.25µm



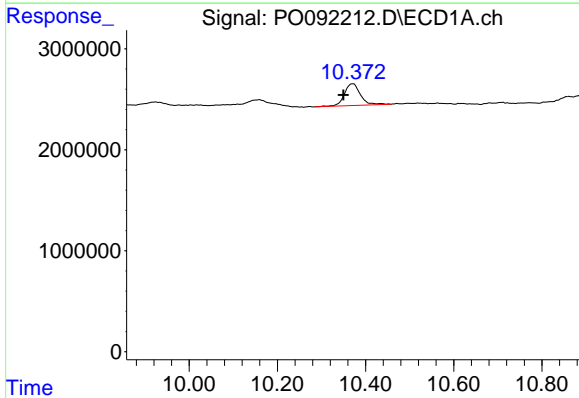


#1 Tetrachloro-m-xylene
 R.T.: 4.446 min
 Delta R.T.: 0.000 min
 Response: 6845519
 Conc: 2.45 ng/ml

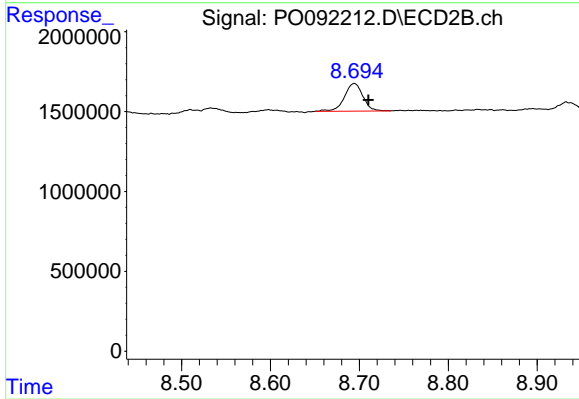
Instrument :
 ECD_O
 ClientSampleId :



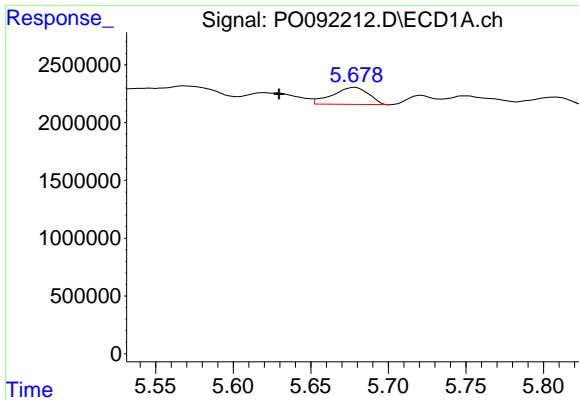
#1 Tetrachloro-m-xylene
 R.T.: 3.645 min
 Delta R.T.: -0.006 min
 Response: 5411652
 Conc: 3.90 ng/ml



#2 Decachlorobiphenyl
 R.T.: 10.371 min
 Delta R.T.: 0.021 min
 Response: 5447266
 Conc: 2.78 ng/ml



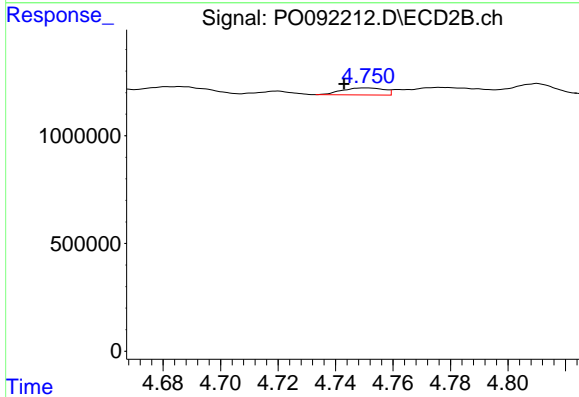
#2 Decachlorobiphenyl
 R.T.: 8.694 min
 Delta R.T.: -0.016 min
 Response: 2505384
 Conc: 2.83 ng/ml



#3 AR-1016-1

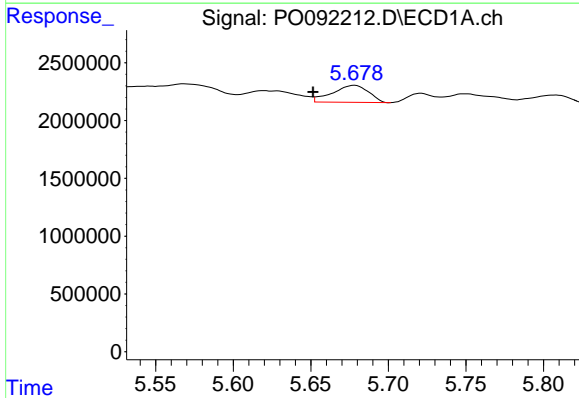
R.T.: 5.678 min
 Delta R.T.: 0.048 min
 Response: 2396560
 Conc: 28.20 ng/ml

Instrument :
 ECD_O
 ClientSampleId :



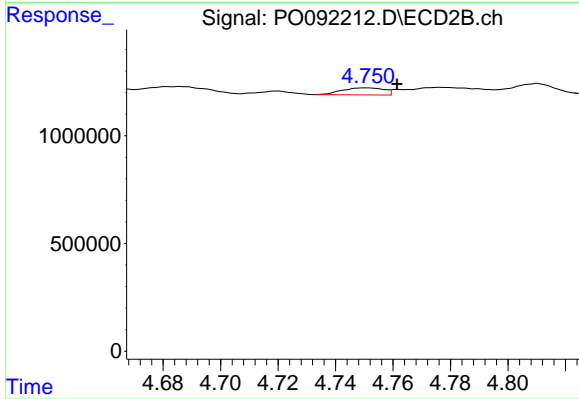
#3 AR-1016-1

R.T.: 4.751 min
 Delta R.T.: 0.008 min
 Response: 327138
 Conc: 7.49 ng/ml



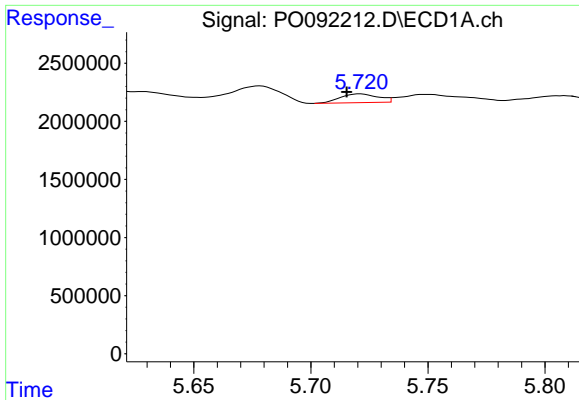
#4 AR-1016-2

R.T.: 5.678 min
 Delta R.T.: 0.026 min
 Response: 2396560
 Conc: 19.05 ng/ml



#4 AR-1016-2

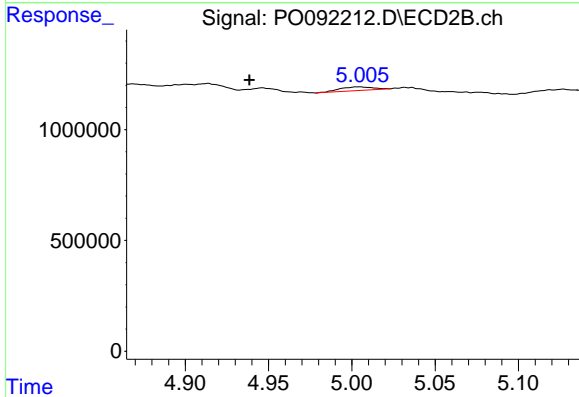
R.T.: 4.751 min
 Delta R.T.: -0.011 min
 Response: 327138
 Conc: 5.20 ng/ml



#5 AR-1016-3

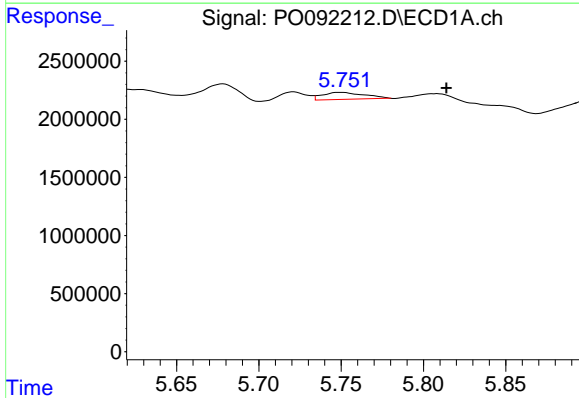
R.T.: 5.721 min
 Delta R.T.: 0.006 min
 Response: 848384
 Conc: 10.67 ng/ml

Instrument :
 ECD_O
 ClientSampleId :



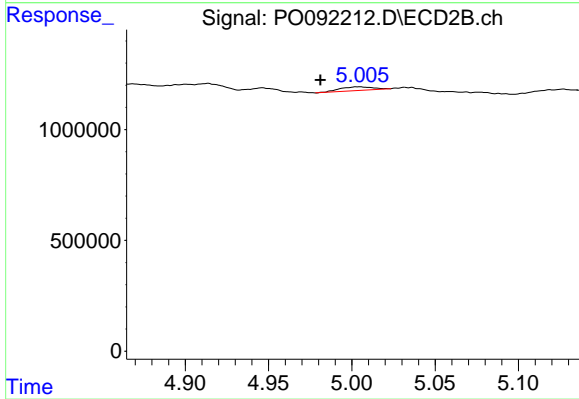
#5 AR-1016-3

R.T.: 5.004 min
 Delta R.T.: 0.066 min
 Response: 234407
 Conc: 6.99 ng/ml



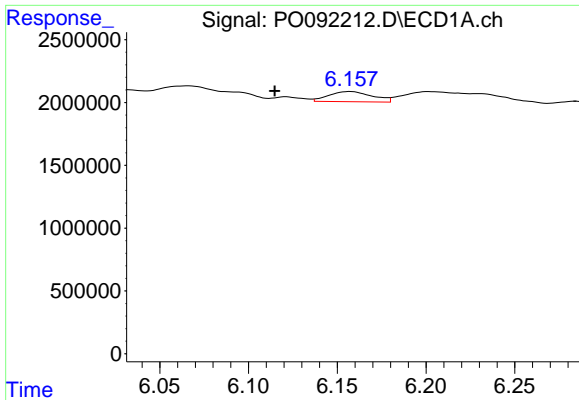
#6 AR-1016-4

R.T.: 5.750 min
 Delta R.T.: -0.064 min
 Response: 1000148
 Conc: 16.28 ng/ml



#6 AR-1016-4

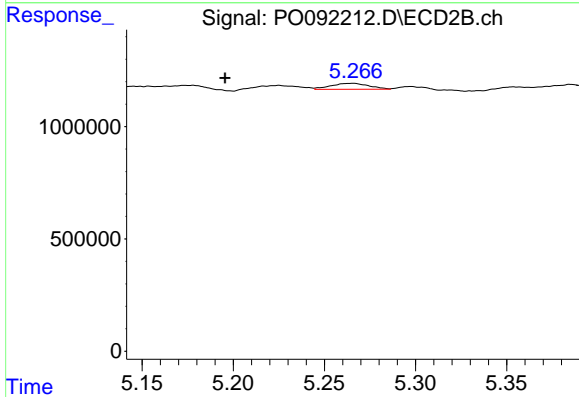
R.T.: 5.004 min
 Delta R.T.: 0.023 min
 Response: 234407
 Conc: 7.89 ng/ml



#7 AR-1016-5

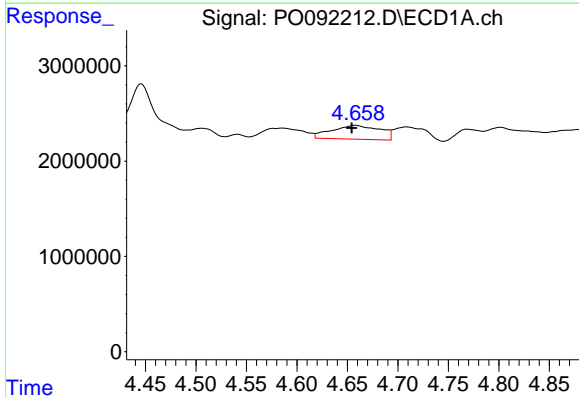
R.T.: 6.157 min
 Delta R.T.: 0.042 min
 Response: 1381101
 Conc: 21.23 ng/ml

Instrument :
 ECD_O
 ClientSampleId :



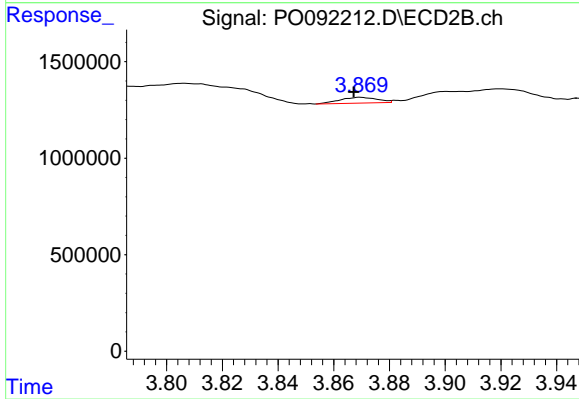
#7 AR-1016-5

R.T.: 5.265 min
 Delta R.T.: 0.070 min
 Response: 383997
 Conc: 10.42 ng/ml



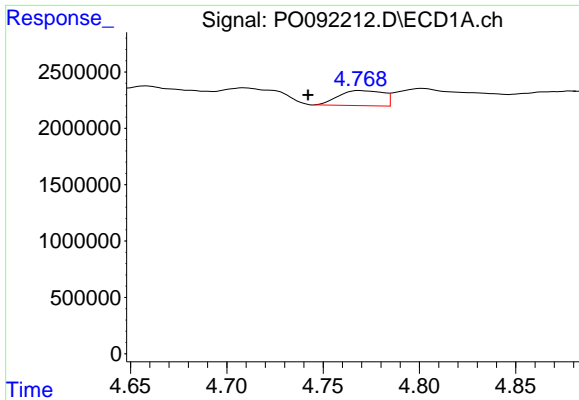
#8 AR-1221-1

R.T.: 4.658 min
 Delta R.T.: 0.004 min
 Response: 4850552
 Conc: 137.26 ng/ml



#8 AR-1221-1

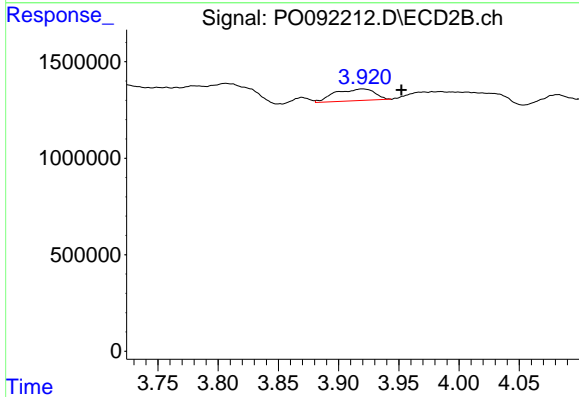
R.T.: 3.870 min
 Delta R.T.: 0.002 min
 Response: 280497
 Conc: 15.85 ng/ml



#9 AR-1221-2

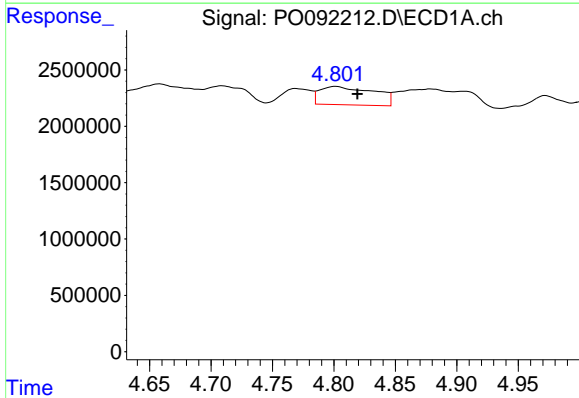
R.T.: 4.769 min
 Delta R.T.: 0.027 min
 Response: 2158748
 Conc: 84.99 ng/ml

Instrument :
 ECD_O
 ClientSampleId :



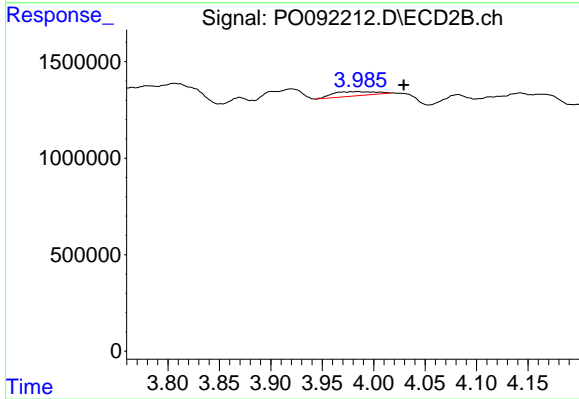
#9 AR-1221-2

R.T.: 3.920 min
 Delta R.T.: -0.032 min
 Response: 1392751
 Conc: 106.63 ng/ml



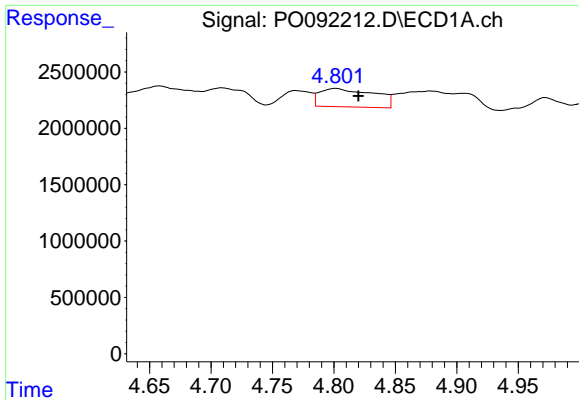
#10 AR-1221-3

R.T.: 4.802 min
 Delta R.T.: -0.018 min
 Response: 4997231
 Conc: 64.39 ng/ml



#10 AR-1221-3

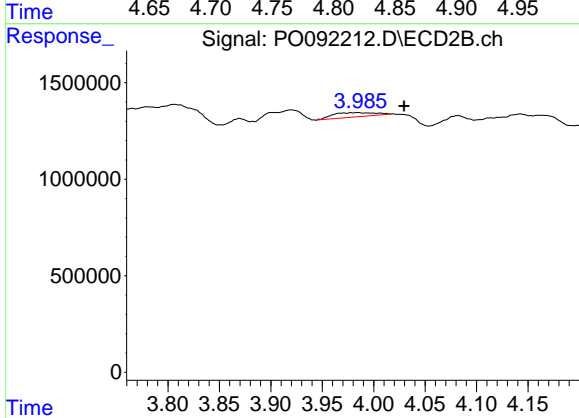
R.T.: 3.985 min
 Delta R.T.: -0.045 min
 Response: 641499
 Conc: 16.54 ng/ml



#11 AR-1232-1

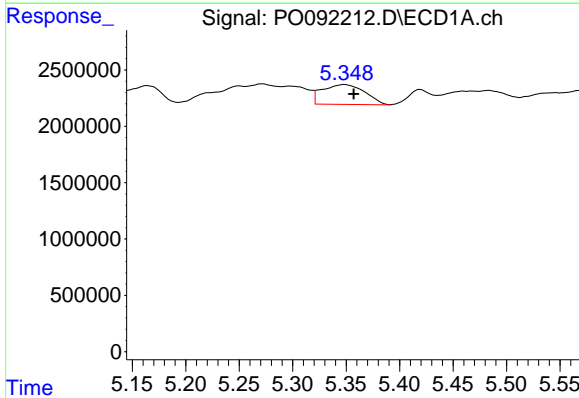
R.T.: 4.802 min
 Delta R.T.: -0.018 min
 Response: 4997231
 Conc: 74.57 ng/ml

Instrument :
 ECD_O
 ClientSampleId :



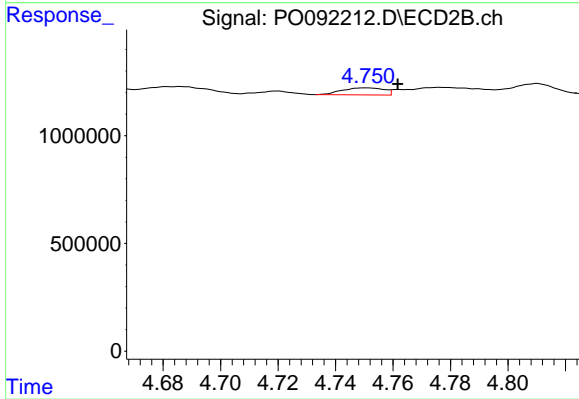
#11 AR-1232-1

R.T.: 3.985 min
 Delta R.T.: -0.045 min
 Response: 641499
 Conc: 18.79 ng/ml



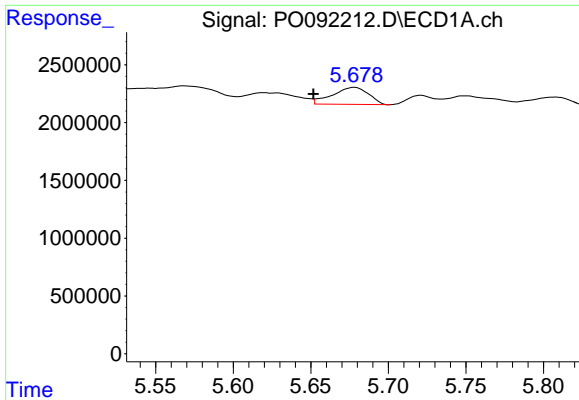
#12 AR-1232-2

R.T.: 5.348 min
 Delta R.T.: -0.009 min
 Response: 4881987
 Conc: 150.43 ng/ml



#12 AR-1232-2

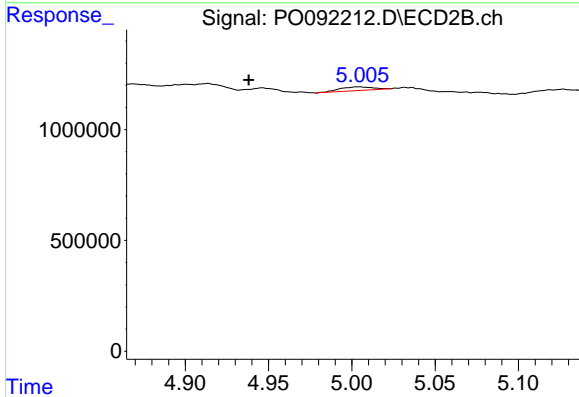
R.T.: 4.751 min
 Delta R.T.: -0.011 min
 Response: 327138
 Conc: 11.30 ng/ml



#13 AR-1232-3

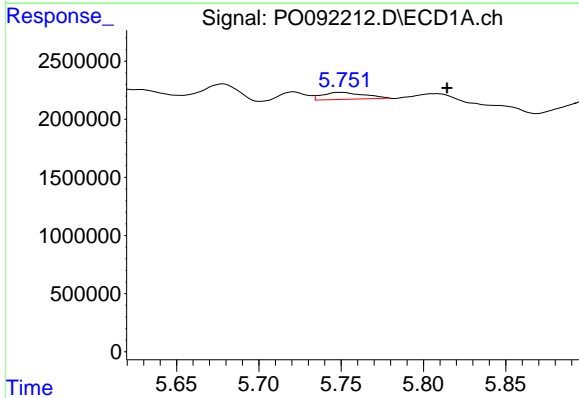
R.T.: 5.678 min
 Delta R.T.: 0.026 min
 Response: 2396560
 Conc: 41.81 ng/ml

Instrument :
 ECD_O
 ClientSampleId :



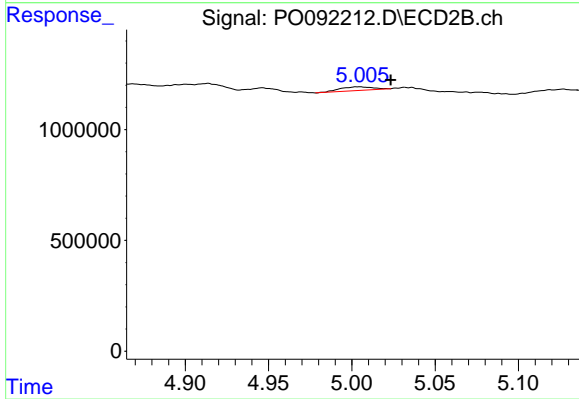
#13 AR-1232-3

R.T.: 5.004 min
 Delta R.T.: 0.066 min
 Response: 234407
 Conc: 15.53 ng/ml



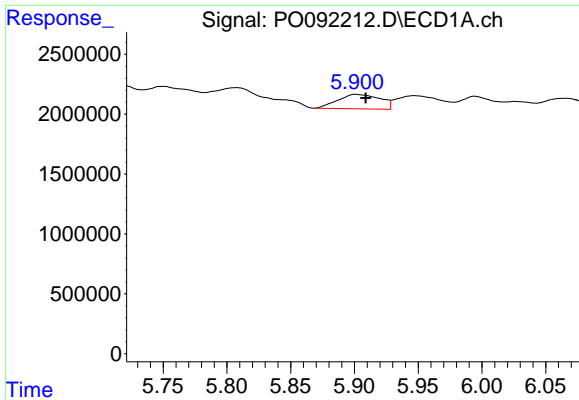
#14 AR-1232-4

R.T.: 5.750 min
 Delta R.T.: -0.065 min
 Response: 1000148
 Conc: 37.01 ng/ml



#14 AR-1232-4

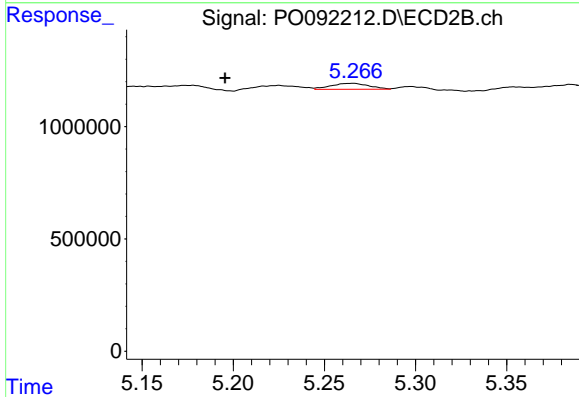
R.T.: 5.004 min
 Delta R.T.: -0.019 min
 Response: 234407
 Conc: 15.56 ng/ml



#15 AR-1232-5

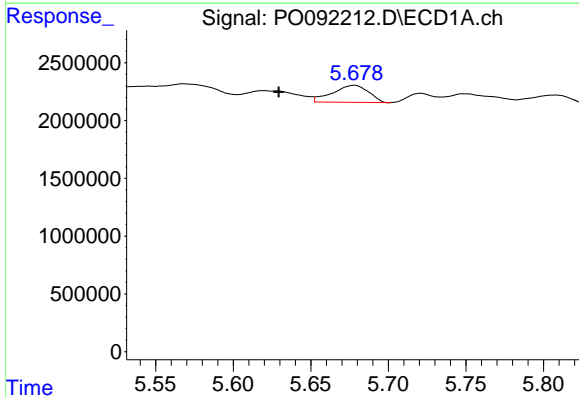
R.T.: 5.902 min
 Delta R.T.: -0.007 min
 Response: 2796997
 Conc: 116.59 ng/ml

Instrument :
 ECD_O
 ClientSampleId :



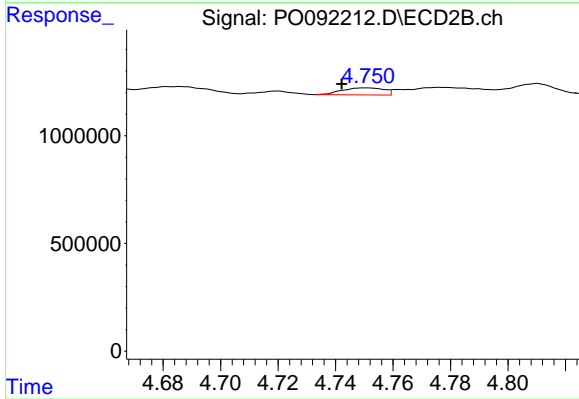
#15 AR-1232-5

R.T.: 5.265 min
 Delta R.T.: 0.070 min
 Response: 383997
 Conc: 23.48 ng/ml



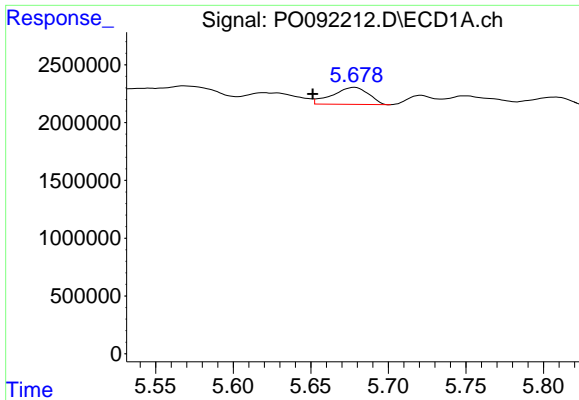
#16 AR-1242-1

R.T.: 5.678 min
 Delta R.T.: 0.049 min
 Response: 2396560
 Conc: 33.58 ng/ml



#16 AR-1242-1

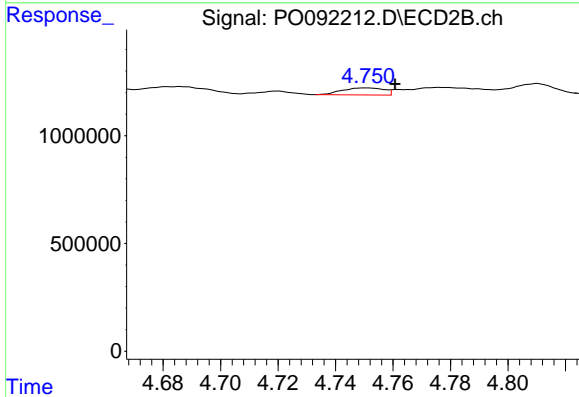
R.T.: 4.751 min
 Delta R.T.: 0.008 min
 Response: 327138
 Conc: 8.76 ng/ml



#17 AR-1242-2

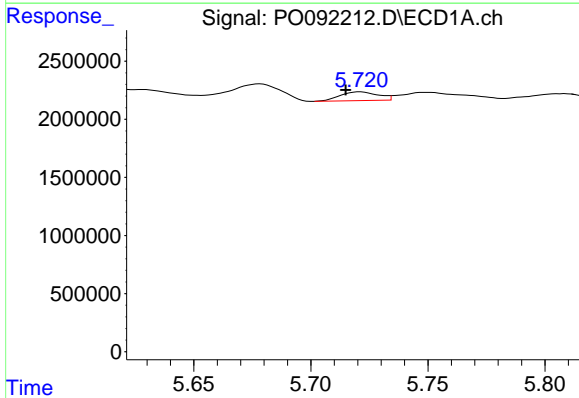
R.T.: 5.678 min
 Delta R.T.: 0.027 min
 Response: 2396560
 Conc: 22.68 ng/ml

Instrument :
 ECD_O
 ClientSampleId :



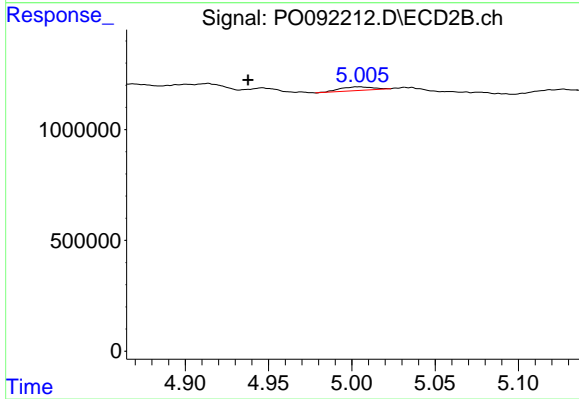
#17 AR-1242-2

R.T.: 4.751 min
 Delta R.T.: -0.010 min
 Response: 327138
 Conc: 6.16 ng/ml



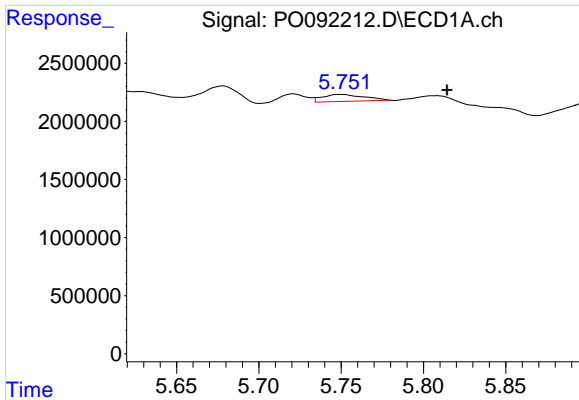
#18 AR-1242-3

R.T.: 5.721 min
 Delta R.T.: 0.006 min
 Response: 848384
 Conc: 12.59 ng/ml



#18 AR-1242-3

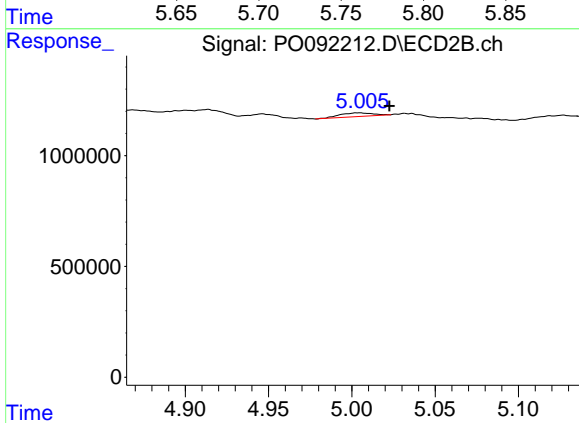
R.T.: 5.004 min
 Delta R.T.: 0.066 min
 Response: 234407
 Conc: 8.19 ng/ml



#19 AR-1242-4

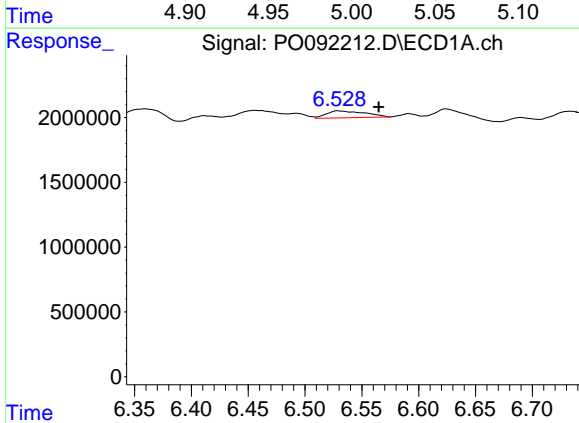
R.T.: 5.750 min
 Delta R.T.: -0.065 min
 Response: 1000148
 Conc: 19.29 ng/ml

Instrument :
 ECD_O
 ClientSampleId :



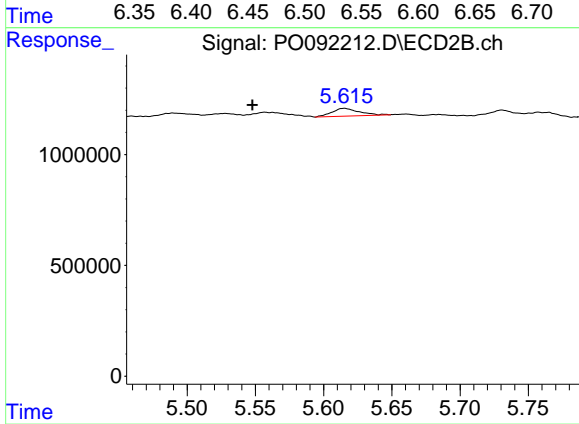
#19 AR-1242-4

R.T.: 5.004 min
 Delta R.T.: -0.018 min
 Response: 234407
 Conc: 7.63 ng/ml



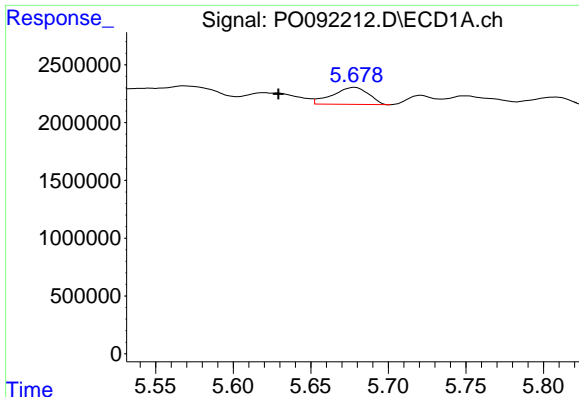
#20 AR-1242-5

R.T.: 6.530 min
 Delta R.T.: -0.035 min
 Response: 1261116
 Conc: 24.91 ng/ml



#20 AR-1242-5

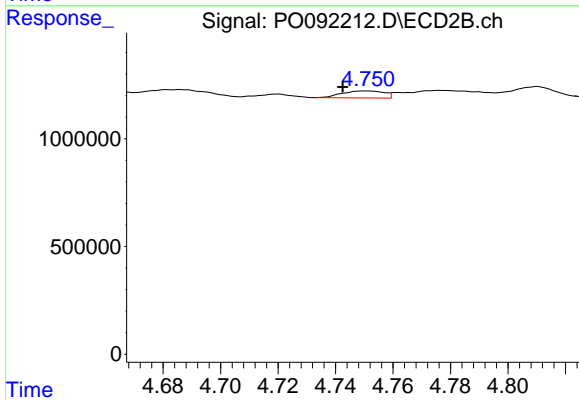
R.T.: 5.615 min
 Delta R.T.: 0.067 min
 Response: 491867
 Conc: 14.91 ng/ml



#21 AR-1248-1

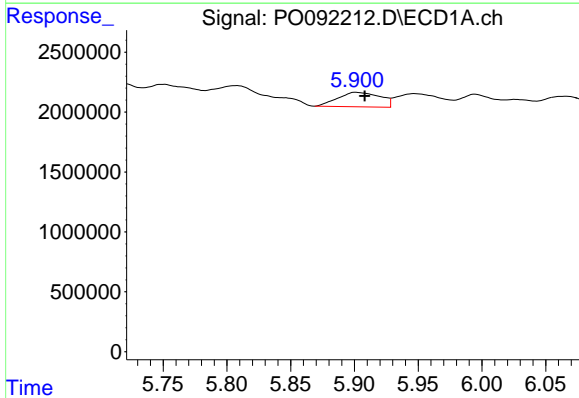
R.T.: 5.678 min
 Delta R.T.: 0.049 min
 Response: 2396560
 Conc: 43.79 ng/ml

Instrument :
 ECD_O
 ClientSampleId :



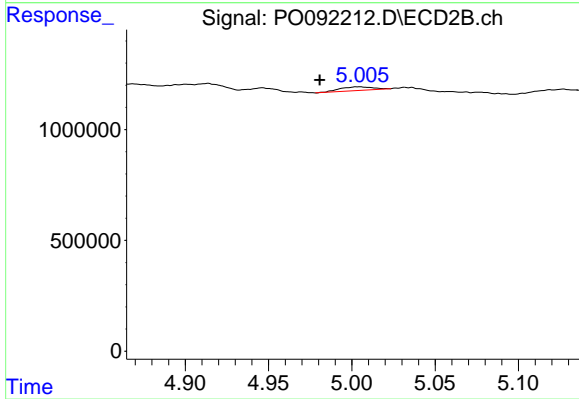
#21 AR-1248-1

R.T.: 4.751 min
 Delta R.T.: 0.008 min
 Response: 327138
 Conc: 11.47 ng/ml



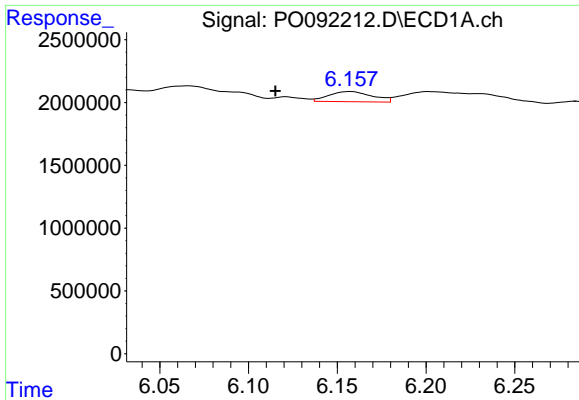
#22 AR-1248-2

R.T.: 5.902 min
 Delta R.T.: -0.007 min
 Response: 2796997
 Conc: 32.34 ng/ml



#22 AR-1248-2

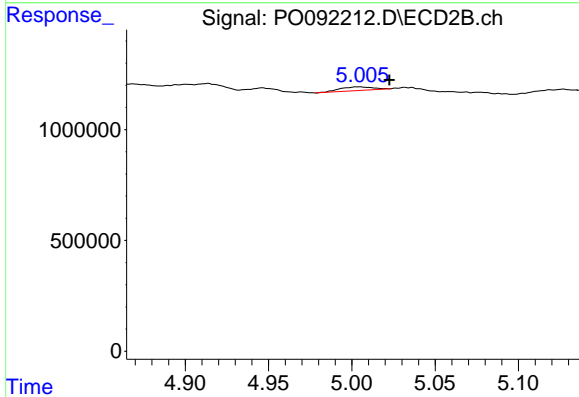
R.T.: 5.004 min
 Delta R.T.: 0.024 min
 Response: 234407
 Conc: 5.28 ng/ml



#23 AR-1248-3

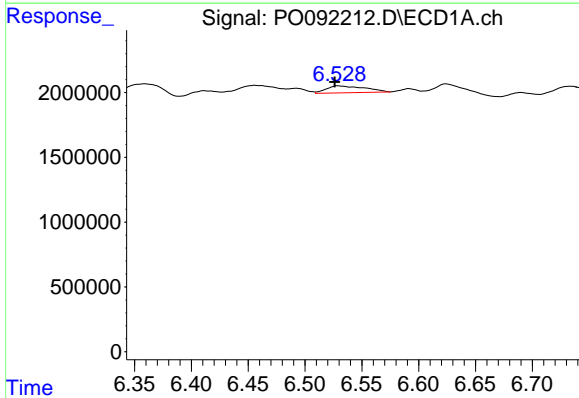
R.T.: 6.157 min
 Delta R.T.: 0.042 min
 Response: 1381101
 Conc: 15.01 ng/ml

Instrument :
 ECD_O
 ClientSampleId :



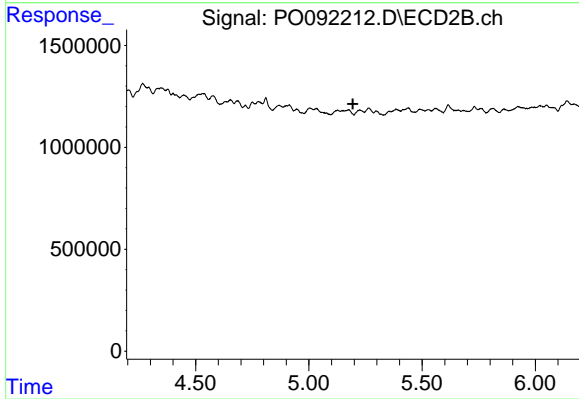
#23 AR-1248-3

R.T.: 5.004 min
 Delta R.T.: -0.018 min
 Response: 234407
 Conc: 5.15 ng/ml



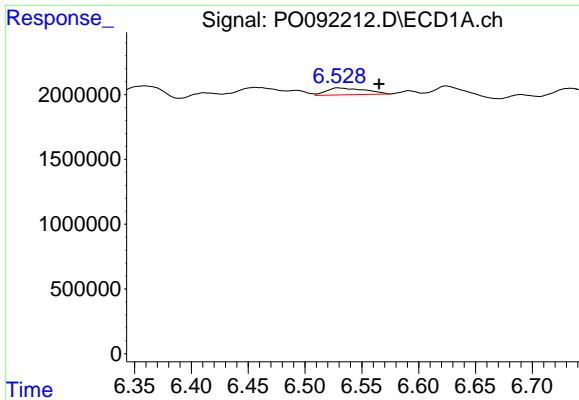
#24 AR-1248-4

R.T.: 6.530 min
 Delta R.T.: 0.004 min
 Response: 1261116
 Conc: 14.18 ng/ml



#24 AR-1248-4

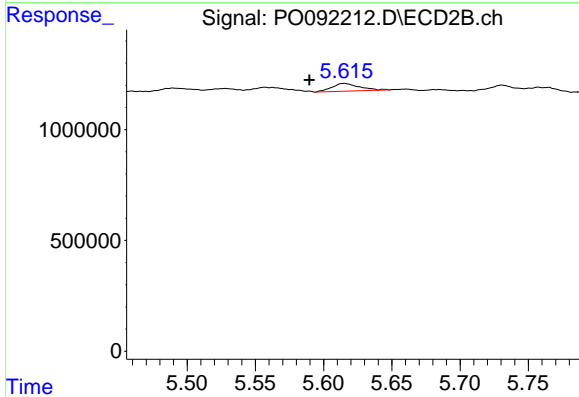
R.T.: 0.000 min
 Exp R.T. : 5.195 min
 Response: 0
 Conc: N.D.



#25 AR-1248-5

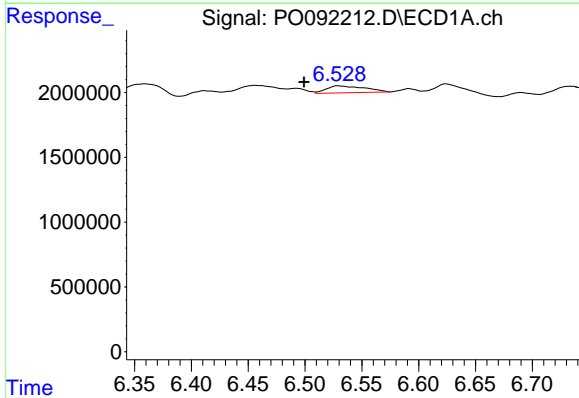
R.T.: 6.530 min
 Delta R.T.: -0.035 min
 Response: 1261116
 Conc: 14.58 ng/ml

Instrument :
 ECD_O
 ClientSampleId :



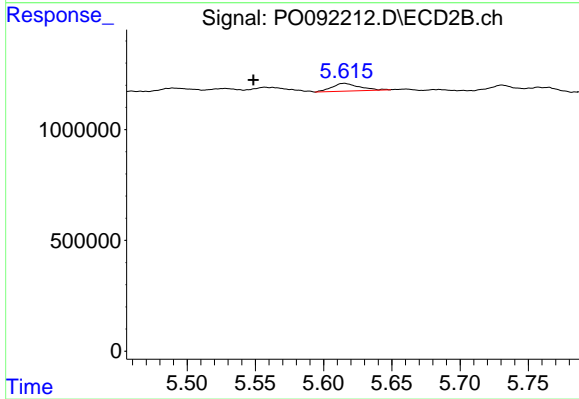
#25 AR-1248-5

R.T.: 5.615 min
 Delta R.T.: 0.025 min
 Response: 491867
 Conc: 11.12 ng/ml



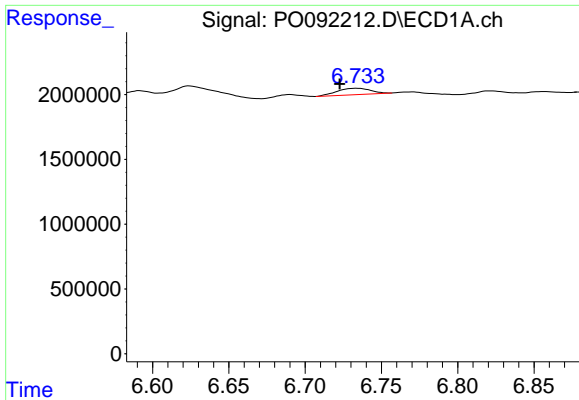
#26 AR-1254-1

R.T.: 6.530 min
 Delta R.T.: 0.031 min
 Response: 1261116
 Conc: 12.19 ng/ml



#26 AR-1254-1

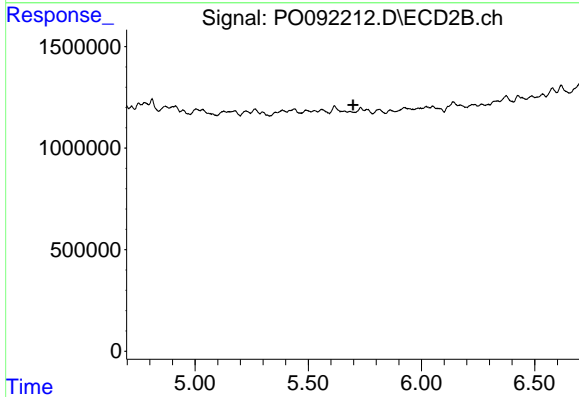
R.T.: 5.615 min
 Delta R.T.: 0.066 min
 Response: 491867
 Conc: 6.66 ng/ml



#27 AR-1254-2

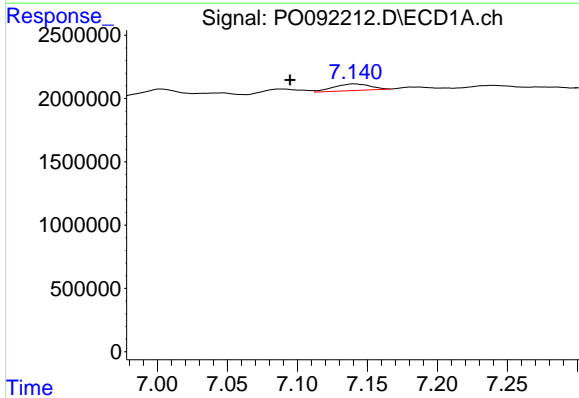
R.T.: 6.734 min
 Delta R.T.: 0.011 min
 Response: 745814
 Conc: 4.92 ng/ml

Instrument :
 ECD_O
 ClientSampleId :



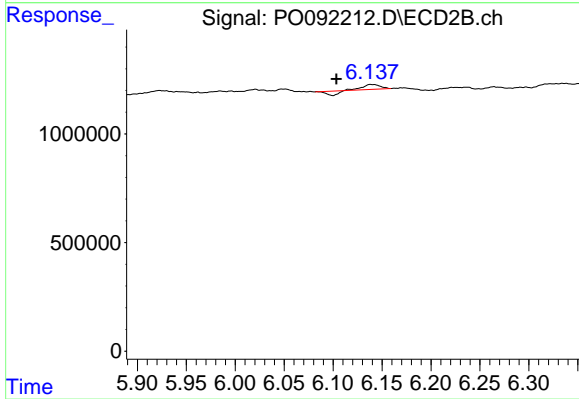
#27 AR-1254-2

R.T.: 0.000 min
 Exp R.T. : 5.697 min
 Response: 0
 Conc: N.D.



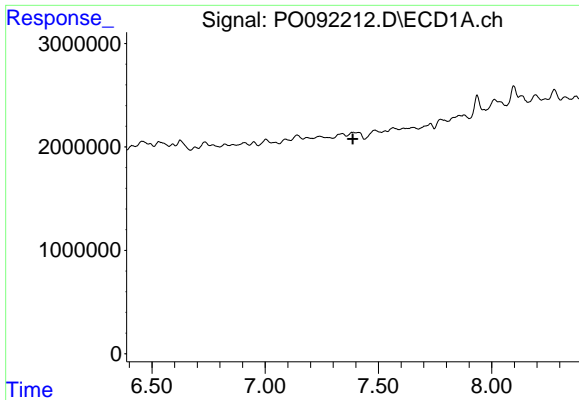
#28 AR-1254-3

R.T.: 7.141 min
 Delta R.T.: 0.046 min
 Response: 937379
 Conc: 6.27 ng/ml



#28 AR-1254-3

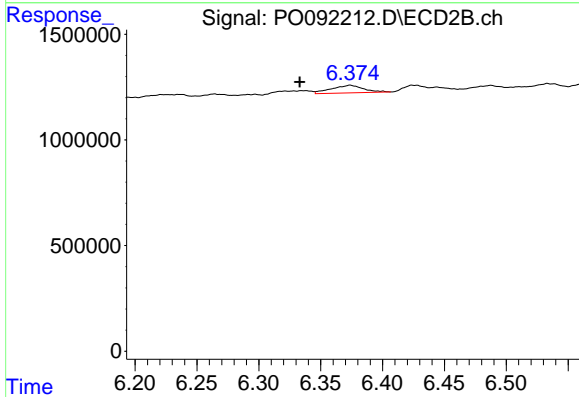
R.T.: 6.139 min
 Delta R.T.: 0.035 min
 Response: 147955
 Conc: 1.52 ng/ml



#29 AR-1254-4

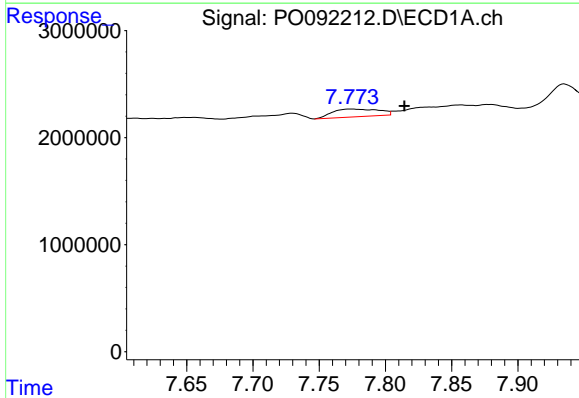
R.T.: 0.000 min
 Exp R.T.: 7.387 min
 Response: 0
 Conc: N.D.

Instrument :
 ECD_O
 ClientSampleId :



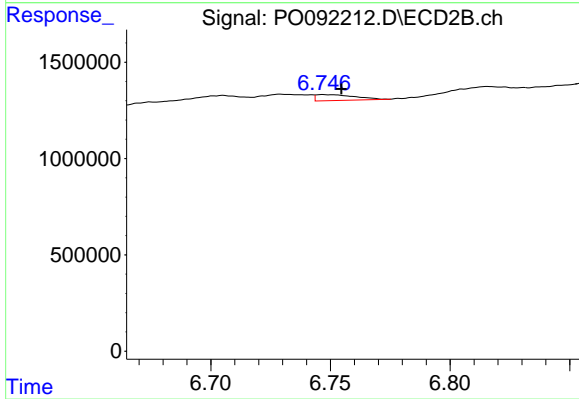
#29 AR-1254-4

R.T.: 6.374 min
 Delta R.T.: 0.041 min
 Response: 650473
 Conc: 13.42 ng/ml



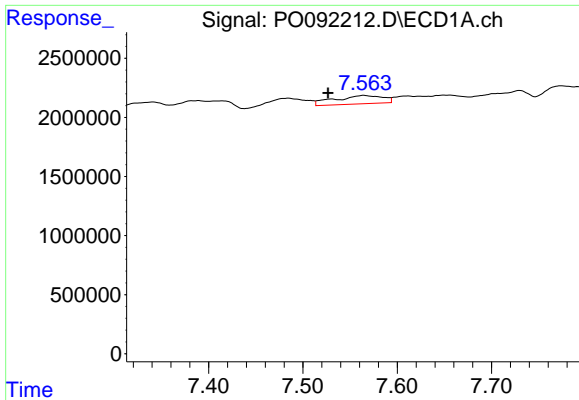
#30 AR-1254-5

R.T.: 7.774 min
 Delta R.T.: -0.040 min
 Response: 1759744
 Conc: 14.19 ng/ml



#30 AR-1254-5

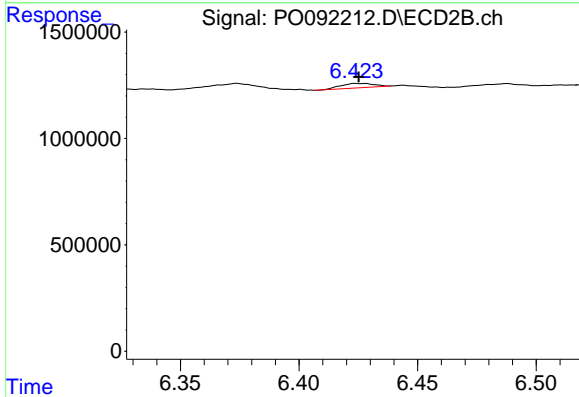
R.T.: 6.747 min
 Delta R.T.: -0.008 min
 Response: 346375
 Conc: 4.50 ng/ml



#32 AR-1260-2

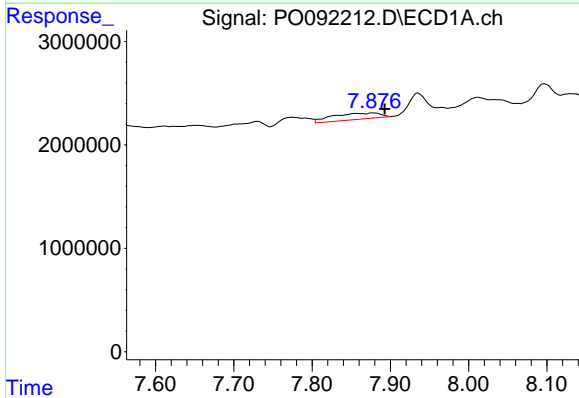
R.T.: 7.565 min
 Delta R.T.: 0.038 min
 Response: 2540040
 Conc: 19.77 ng/ml

Instrument :
 ECD_O
 ClientSampleId :



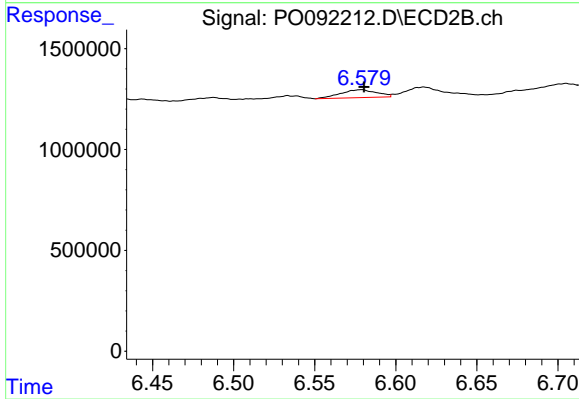
#32 AR-1260-2

R.T.: 6.425 min
 Delta R.T.: 0.000 min
 Response: 195326
 Conc: 2.67 ng/ml



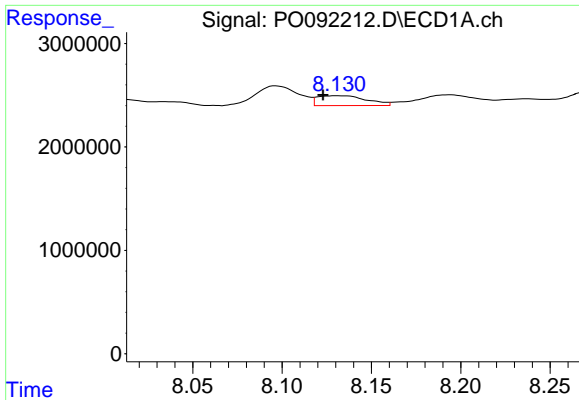
#33 AR-1260-3

R.T.: 7.878 min
 Delta R.T.: -0.015 min
 Response: 2585430
 Conc: 24.79 ng/ml



#33 AR-1260-3

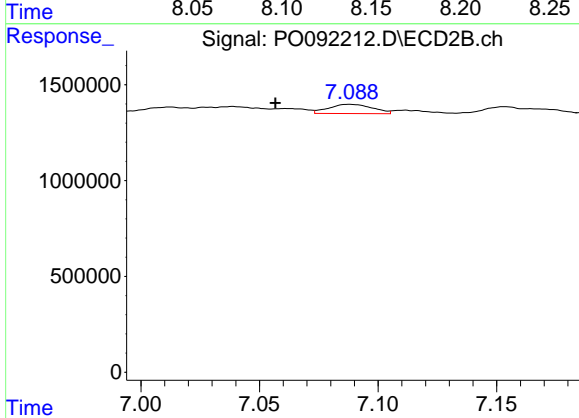
R.T.: 6.579 min
 Delta R.T.: -0.002 min
 Response: 607139
 Conc: 8.49 ng/ml



#34 AR-1260-4

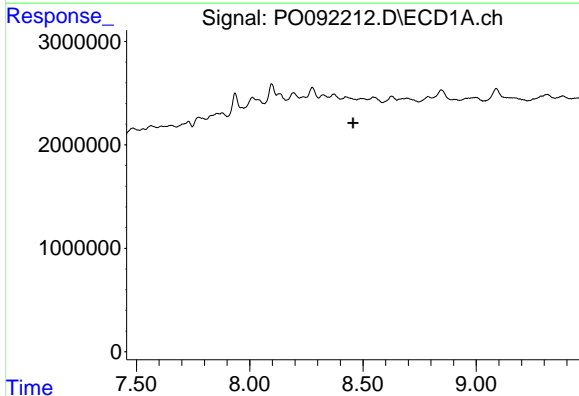
R.T.: 8.131 min
 Delta R.T.: 0.008 min
 Response: 1829137
 Conc: 15.84 ng/ml

Instrument :
 ECD_O
 ClientSampleId :



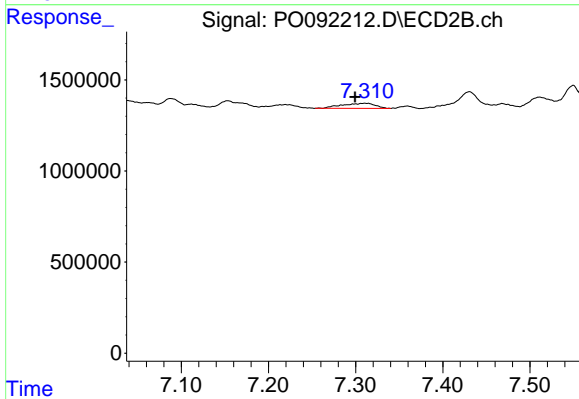
#34 AR-1260-4

R.T.: 7.088 min
 Delta R.T.: 0.031 min
 Response: 620116
 Conc: 11.51 ng/ml



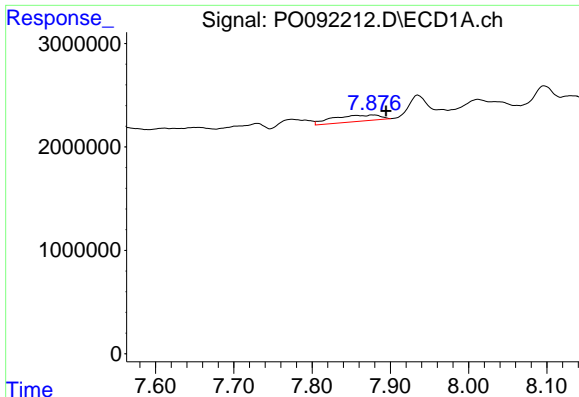
#35 AR-1260-5

R.T.: 0.000 min
 Exp R.T. : 8.456 min
 Response: 0
 Conc: N.D.



#35 AR-1260-5

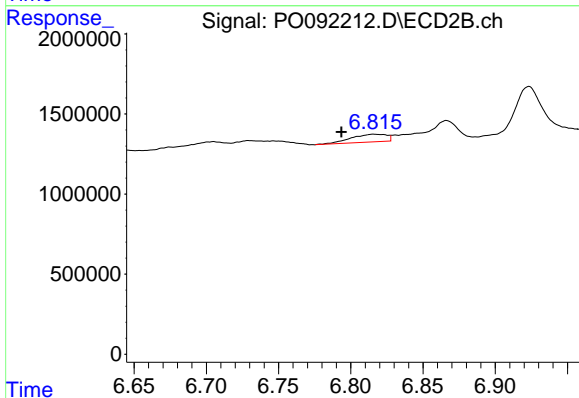
R.T.: 7.310 min
 Delta R.T.: 0.011 min
 Response: 761386
 Conc: 6.79 ng/ml



#36 AR-1262-1

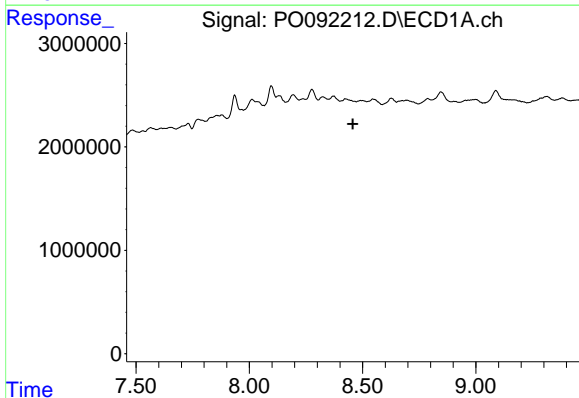
R.T.: 7.878 min
 Delta R.T.: -0.016 min
 Response: 2585430
 Conc: 20.06 ng/ml

Instrument :
 ECD_O
 ClientSampleId :



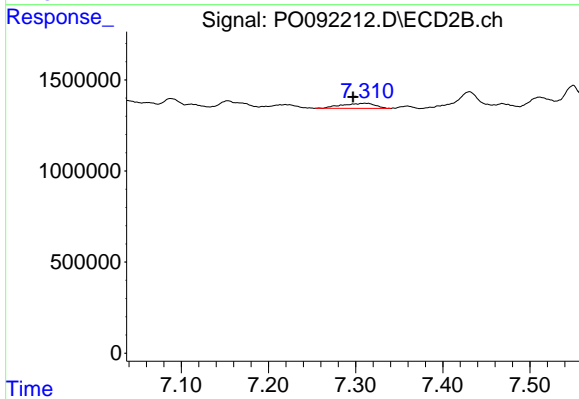
#36 AR-1262-1

R.T.: 6.816 min
 Delta R.T.: 0.022 min
 Response: 838768
 Conc: 10.95 ng/ml



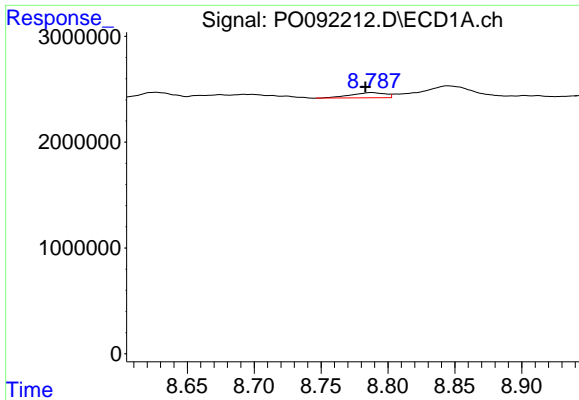
#37 AR-1262-2

R.T.: 0.000 min
 Exp R.T. : 8.457 min
 Response: 0
 Conc: N.D.



#37 AR-1262-2

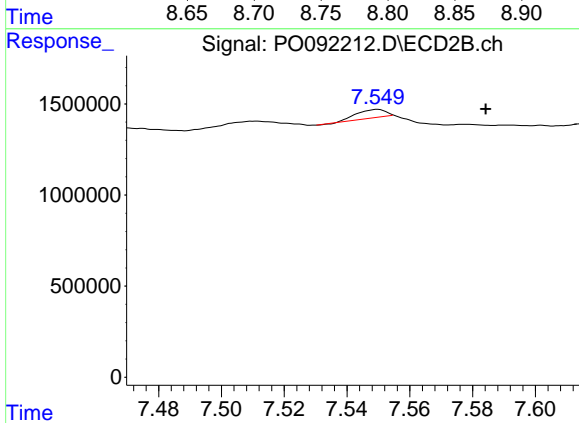
R.T.: 7.310 min
 Delta R.T.: 0.013 min
 Response: 761386
 Conc: 6.58 ng/ml



#38 AR-1262-3

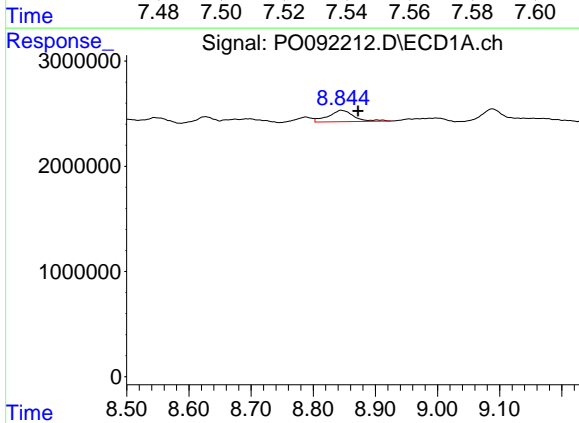
R.T.: 8.788 min
 Delta R.T.: 0.005 min
 Response: 889414
 Conc: 6.31 ng/ml

Instrument :
 ECD_O
 ClientSampleId :



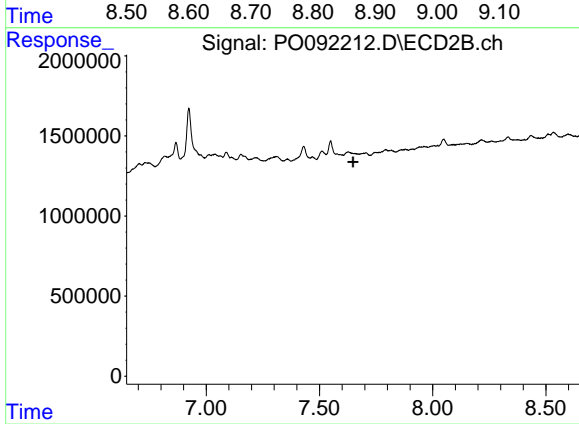
#38 AR-1262-3

R.T.: 7.550 min
 Delta R.T.: -0.035 min
 Response: 335923
 Conc: 7.51 ng/ml



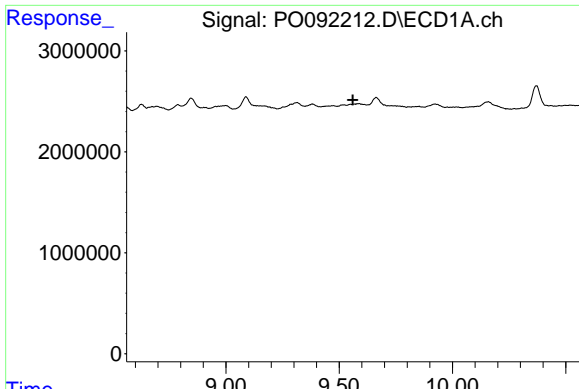
#39 AR-1262-4

R.T.: 8.845 min
 Delta R.T.: -0.027 min
 Response: 3081253
 Conc: 36.56 ng/ml



#39 AR-1262-4

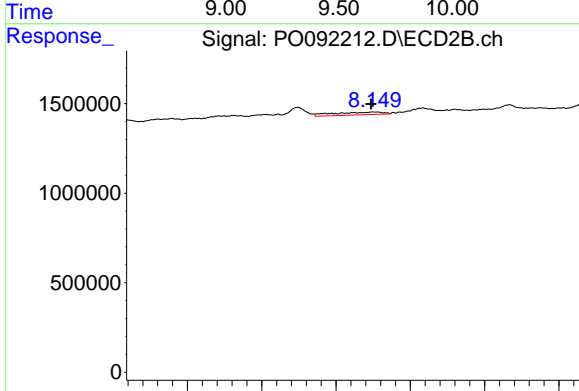
R.T.: 0.000 min
 Exp R.T.: 7.648 min
 Response: 0
 Conc: N.D.



#40 AR-1262-5

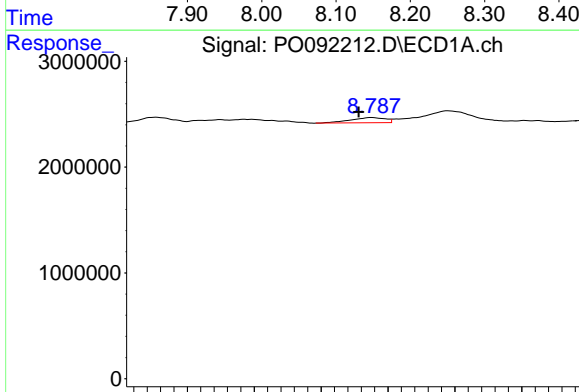
R.T.: 0.000 min
 Exp R.T.: 9.560 min
 Response: 0
 Conc: N.D.

Instrument :
 ECD_O
 ClientSampleId :



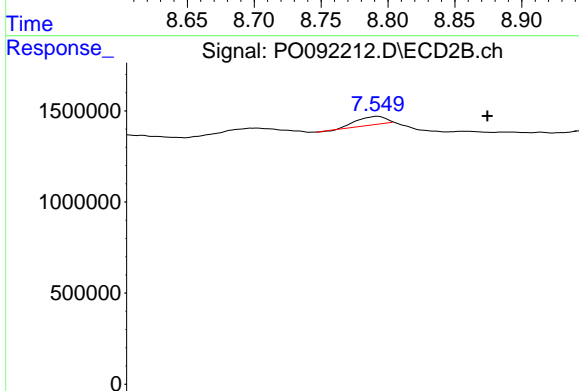
#40 AR-1262-5

R.T.: 8.149 min
 Delta R.T.: 0.002 min
 Response: 713085
 Conc: 19.57 ng/ml



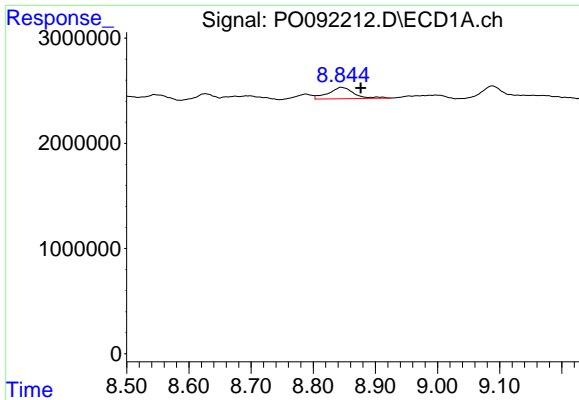
#41 AR-1268-1

R.T.: 8.788 min
 Delta R.T.: 0.010 min
 Response: 889414
 Conc: 3.10 ng/ml



#41 AR-1268-1

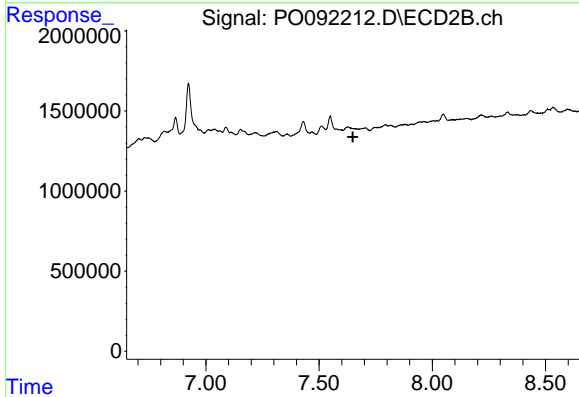
R.T.: 7.550 min
 Delta R.T.: -0.035 min
 Response: 335923
 Conc: 2.20 ng/ml



#42 AR-1268-2

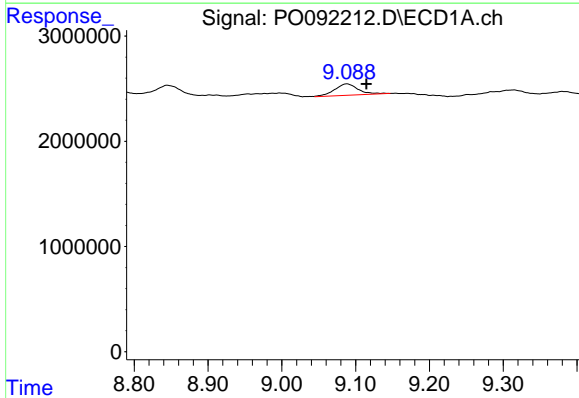
R.T.: 8.845 min
 Delta R.T.: -0.031 min
 Response: 3081253
 Conc: 10.60 ng/ml

Instrument :
 ECD_O
 ClientSampleId :



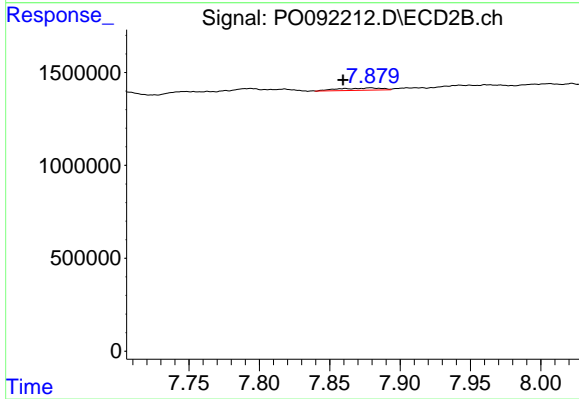
#42 AR-1268-2

R.T.: 0.000 min
 Exp R.T. : 7.649 min
 Response: 0
 Conc: N.D.



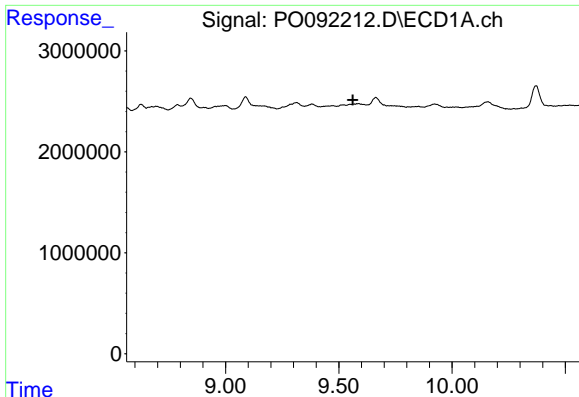
#43 AR-1268-3

R.T.: 9.088 min
 Delta R.T.: -0.027 min
 Response: 2409870
 Conc: 10.16 ng/ml



#43 AR-1268-3

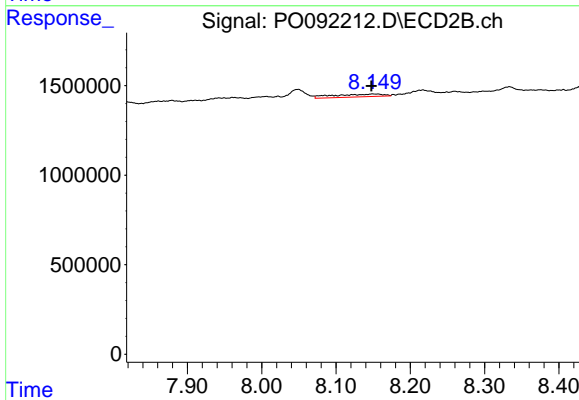
R.T.: 7.879 min
 Delta R.T.: 0.020 min
 Response: 262993
 Conc: 2.07 ng/ml



#44 AR-1268-4

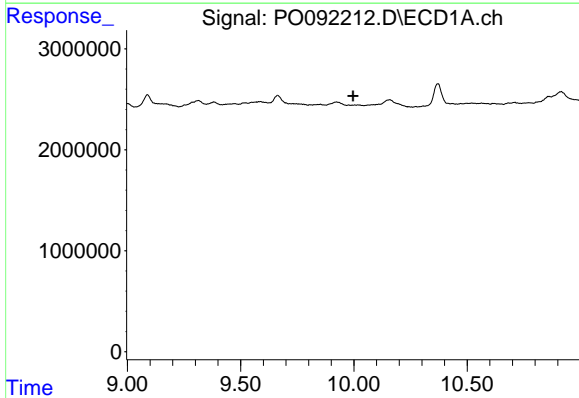
R.T.: 0.000 min
 Exp R.T. : 9.562 min
 Response: 0
 Conc: N.D.

Instrument :
 ECD_O
 ClientSampleId :



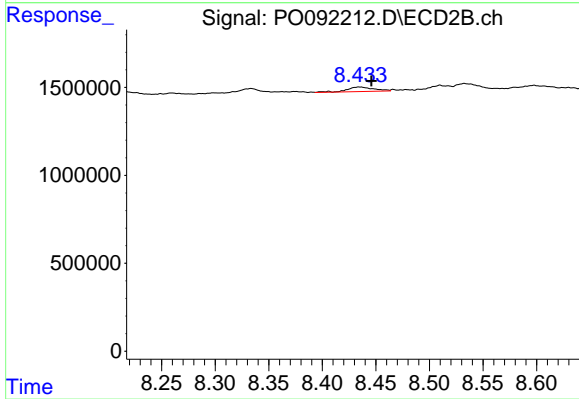
#44 AR-1268-4

R.T.: 8.149 min
 Delta R.T.: 0.002 min
 Response: 713085
 Conc: 15.06 ng/ml



#45 AR-1268-5

R.T.: 0.000 min
 Exp R.T. : 9.996 min
 Response: 0
 Conc: N.D.



#45 AR-1268-5

R.T.: 8.435 min
 Delta R.T.: -0.011 min
 Response: 467607
 Conc: 1.25 ng/ml