

Data Path : Z:\pestpcbsrv\HPCHEM1\ECD_0\Data\P0012120\
 Data File : P0065715.D
 Signal(s) : Signal #1: ECD1A.CH Signal #2: ECD2B.CH
 Acq On : 21 Jan 2020 16:56
 Operator : DD\AJ
 Sample : L1161-07
 Misc : AR1248 LOD 25 PPB
 ALS Vial : 11 Sample Multiplier: 1

Instrument :
 ECD_0
ClientSampleId :
 LOD-MDL-WATER-01-QT1-2020

Manual Integrations
APPROVED
 mohammad
 1/22/2020 3:26:32 PM

Integration File signal 1: autoint1.e
 Integration File signal 2: autoint2.e
 Quant Time: Jan 22 04:21:06 2020
 Quant Method : Z:\pestpcbsrv\HPCHEM1\ECD_0\methods\P0010420.M
 Quant Title : GC EXTRACTABLES
 QLast Update : Sat Jan 04 04:01:28 2020
 Response via : Initial Calibration
 Integrator: ChemStation 6890 Scale Mode: Small noise peaks clipped

Volume Inj. : 2 µl
 Signal #1 Phase : ZB-MR1 Signal #2 Phase: ZB-MR2
 Signal #1 Info : 30Mx0.32mmx 0.50µ Signal #2 Info : 30M x 0.32mm x 0.25µm

Compound	RT#1	RT#2	Resp#1	Resp#2	ng/ml	ng/ml

System Monitoring Compounds						
1) SA Tetrachlo...	4.155	3.431	395558	482134	21.662	21.918
2) SA Decachlor...	9.652	8.331	750957	877637	22.164	21.163
Target Compounds						
21) L5 AR-1248-1	5.305	4.491	14724	18569	31.645m	33.496m
22) L5 AR-1248-2	5.574	4.723	17362	25568	26.313	33.325 #
23) L5 AR-1248-3	5.775	4.763	24411	21836	32.397	27.754
24) L5 AR-1248-4	6.175	4.931	32818	36454	34.645	38.032
25) L5 AR-1248-5	6.212	5.318	30222	30367	33.039	29.999

(f)=RT Delta > 1/2 Window (#)=Amounts differ by > 25% (m)=manual int.

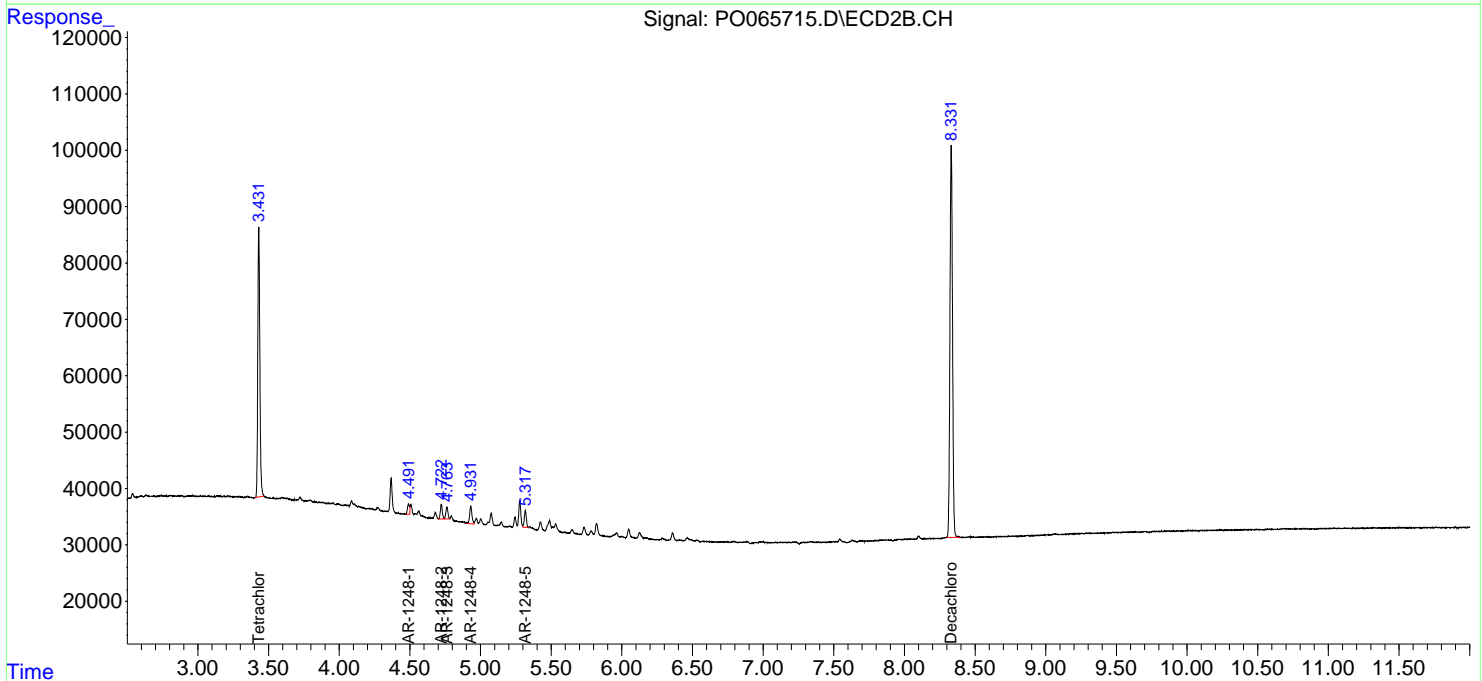
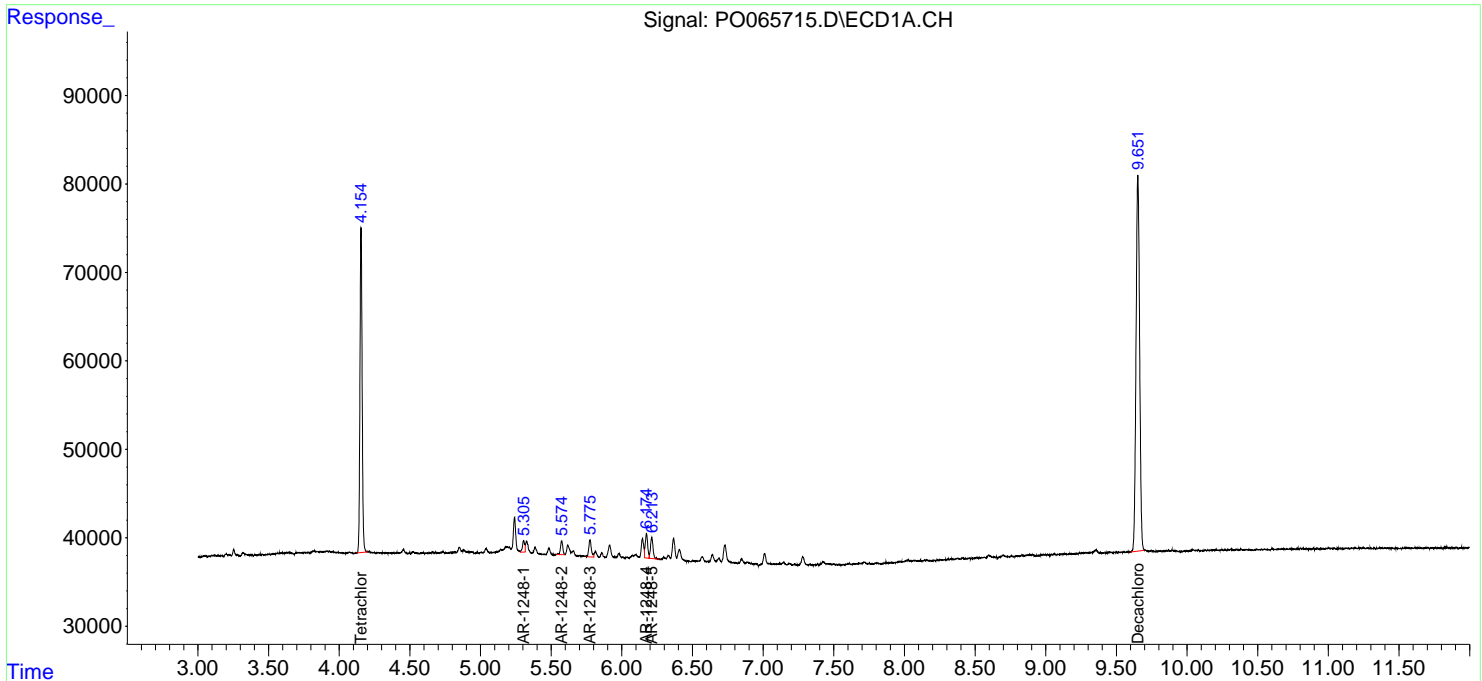
Data Path : Z:\pestpcbsrv\HPCHEM1\ECD_O\Data\P0012120\
 Data File : P0065715.D
 Signal(s) : Signal #1: ECD1A.CH Signal #2: ECD2B.CH
 Acq On : 21 Jan 2020 16:56
 Operator : DD\AJ
 Sample : L1161-07
 Misc : AR1248 LOD 25 PPB
 ALS Vial : 11 Sample Multiplier: 1

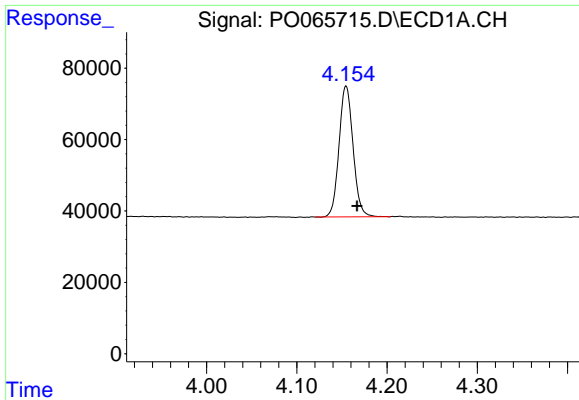
Instrument :
 ECD_O
Client Sampled :
 LOD-MDL-WATER-01-QT1-2020

Manual Integrations
APPROVED
 mohammad
 1/22/2020 3:26:32 PM

Integration File signal 1: autoint1.e
 Integration File signal 2: autoint2.e
 Quant Time: Jan 22 04:21:06 2020
 Quant Method : Z:\pestpcbsrv\HPCHEM1\ECD_O\methods\P0010420.M
 Quant Title : GC EXTRACTABLES
 QLast Update : Sat Jan 04 04:01:28 2020
 Response via : Initial Calibration
 Integrator: ChemStation 6890 Scale Mode: Small noise peaks clipped

Volume Inj. : 2 µl
 Signal #1 Phase : ZB-MR1 Signal #2 Phase: ZB-MR2
 Signal #1 Info : 30Mx0.32mmx 0.50µ Signal #2 Info : 30M x 0.32mm x 0.25µm

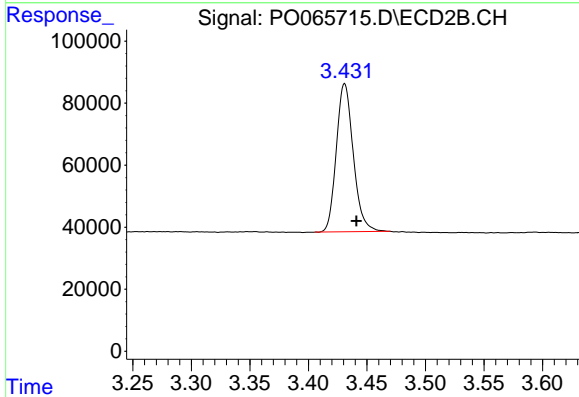




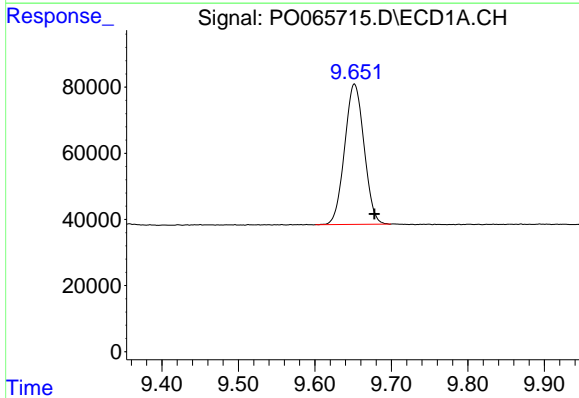
#1 Tetrachloro-m-xylene
 R.T.: 4.155 min
 Delta R.T.: -0.012 min
 Response: 395558
 Conc: 21.66 ng/ml

Instrument :
 ECD_O
 ClientSampled :
 LOD-MDL-WATER-01-QT1-2020

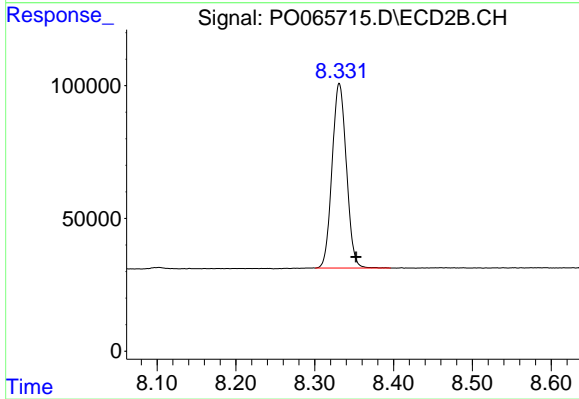
Manual Integrations
 APPROVED
 mohammad
 1/22/2020 3:26:32 PM



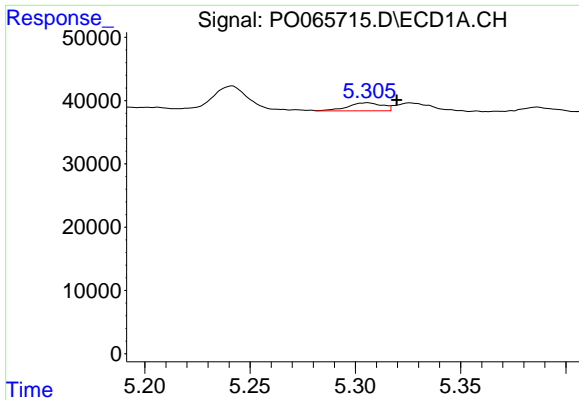
#1 Tetrachloro-m-xylene
 R.T.: 3.431 min
 Delta R.T.: -0.010 min
 Response: 482134
 Conc: 21.92 ng/ml



#2 Decachlorobiphenyl
 R.T.: 9.652 min
 Delta R.T.: -0.026 min
 Response: 750957
 Conc: 22.16 ng/ml



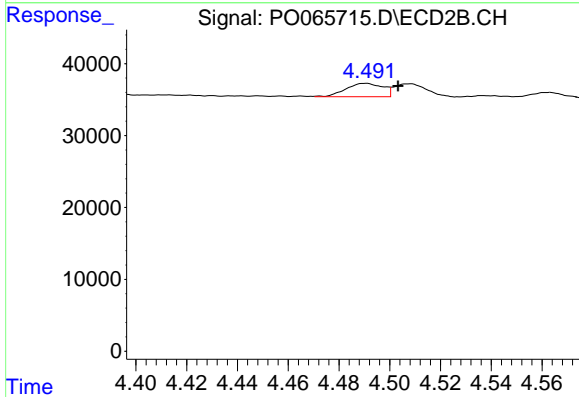
#2 Decachlorobiphenyl
 R.T.: 8.331 min
 Delta R.T.: -0.021 min
 Response: 877637
 Conc: 21.16 ng/ml



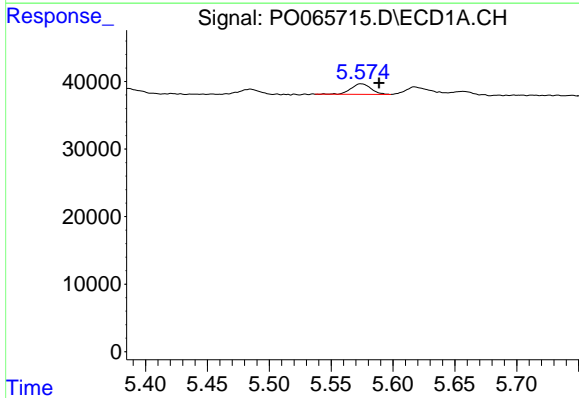
#21 AR-1248-1
 R.T.: 5.305 min
 Delta R.T.: -0.014 min
 Response: 14724
 Conc: 31.64 ng/ml m

Instrument :
 ECD_O
ClientSampled :
 LOD-MDL-WATER-01-QT1-2020

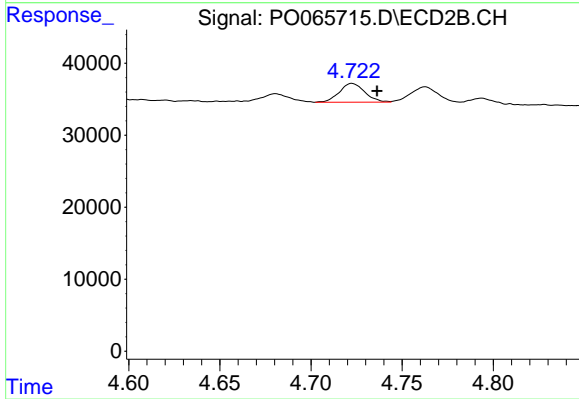
Manual Integrations
APPROVED
 mohammad
 1/22/2020 3:26:32 PM



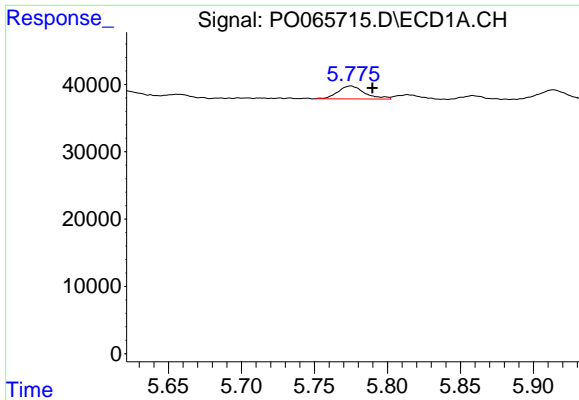
#21 AR-1248-1
 R.T.: 4.491 min
 Delta R.T.: -0.012 min
 Response: 18569
 Conc: 33.50 ng/ml m



#22 AR-1248-2
 R.T.: 5.574 min
 Delta R.T.: -0.015 min
 Response: 17362
 Conc: 26.31 ng/ml



#22 AR-1248-2
 R.T.: 4.723 min
 Delta R.T.: -0.014 min
 Response: 25568
 Conc: 33.33 ng/ml

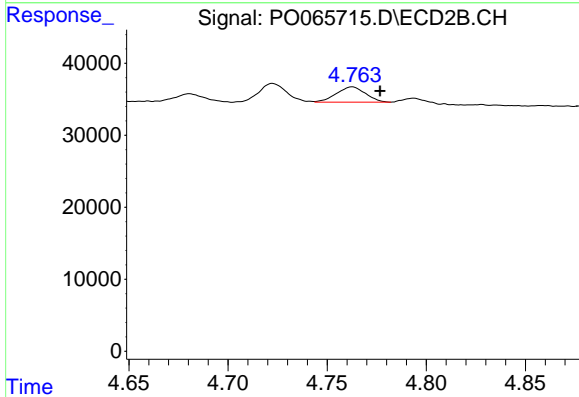


#23 AR-1248-3

R.T.: 5.775 min
 Delta R.T.: -0.015 min
 Response: 24411
 Conc: 32.40 ng/ml

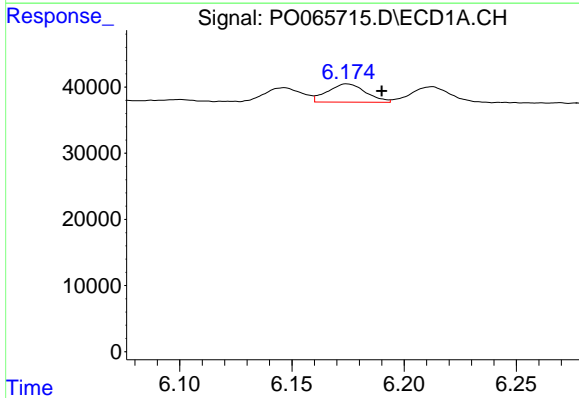
Instrument :
 ECD_O
 ClientSampleId :
 LOD-MDL-WATER-01-QT1-2020

Manual Integrations
 APPROVED
 mohammad
 1/22/2020 3:26:32 PM



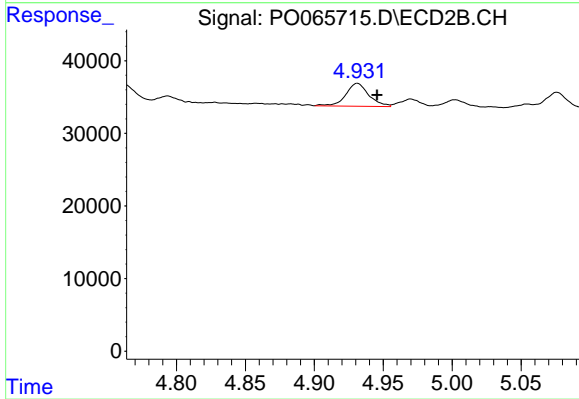
#23 AR-1248-3

R.T.: 4.763 min
 Delta R.T.: -0.014 min
 Response: 21836
 Conc: 27.75 ng/ml



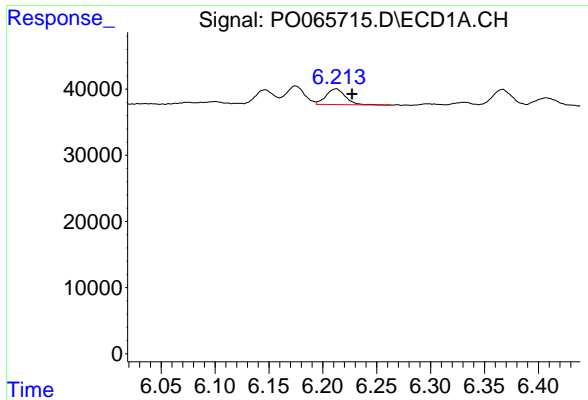
#24 AR-1248-4

R.T.: 6.175 min
 Delta R.T.: -0.015 min
 Response: 32818
 Conc: 34.65 ng/ml



#24 AR-1248-4

R.T.: 4.931 min
 Delta R.T.: -0.014 min
 Response: 36454
 Conc: 38.03 ng/ml



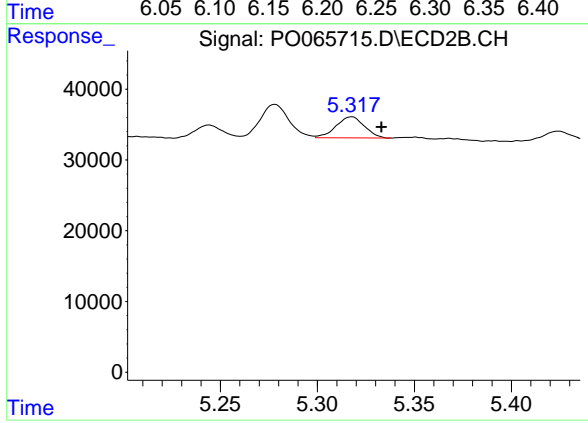
#25 AR-1248-5

R.T.: 6.212 min
Delta R.T.: -0.015 min
Response: 30222
Conc: 33.04 ng/ml

Instrument :
ECD_O
ClientSampleId :
LOD-MDL-WATER-01-QT1-2020

Manual Integrations
APPROVED

mohammad
1/22/2020 3:26:32 PM



#25 AR-1248-5

R.T.: 5.318 min
Delta R.T.: -0.015 min
Response: 30367
Conc: 30.00 ng/ml