

Data Path : Z:\pestpcbsrv\HPCHEM1\ECD\_0\Data\P0012120\  
 Data File : P0065725.D  
 Signal(s) : Signal #1: ECD1A.CH Signal #2: ECD2B.CH  
 Acq On : 21 Jan 2020 19:44  
 Operator : DD\AJ  
 Sample : L1161-02  
 Misc : AR1248 LOQ 50 PPB  
 ALS Vial : 19 Sample Multiplier: 1

**Instrument :**  
 ECD\_0  
**ClientSampleId :**  
 LOQ-SOIL-02-QT1-2020

**Manual Integrations**  
**APPROVED**  
 mohammad  
 1/22/2020 3:27:16 PM

Integration File signal 1: autoint1.e  
 Integration File signal 2: autoint2.e  
 Quant Time: Jan 22 04:25:01 2020  
 Quant Method : Z:\pestpcbsrv\HPCHEM1\ECD\_0\methods\P0010420.M  
 Quant Title : GC EXTRACTABLES  
 QLast Update : Sat Jan 04 04:01:28 2020  
 Response via : Initial Calibration  
 Integrator: ChemStation 6890 Scale Mode: Small noise peaks clipped

Volume Inj. : 2 µl  
 Signal #1 Phase : ZB-MR1 Signal #2 Phase: ZB-MR2  
 Signal #1 Info : 30Mx0.32mmx 0.50µ Signal #2 Info : 30M x 0.32mm x 0.25µm

Compound	RT#1	RT#2	Resp#1	Resp#2	ng/ml	ng/ml
-----						
System Monitoring Compounds						
1) SA Tetrachlo...	4.155	3.431	431915	525110	23.653	23.871
2) SA Decachlor...	9.651	8.330	744811	888047	21.982	21.414
Target Compounds						
21) L5 AR-1248-1	5.304	4.489	33709	39647	72.444m	71.518m
22) L5 AR-1248-2	5.574	4.721	44637	56044	67.647	73.046
23) L5 AR-1248-3	5.774	4.762	50579	57429	67.127	72.991
24) L5 AR-1248-4	6.173	4.930	70003	69760	73.900m	72.780
25) L5 AR-1248-5	6.211	5.317	66564	63078	72.769m	62.312
-----						

(f)=RT Delta > 1/2 Window (#)=Amounts differ by > 25% (m)=manual int.

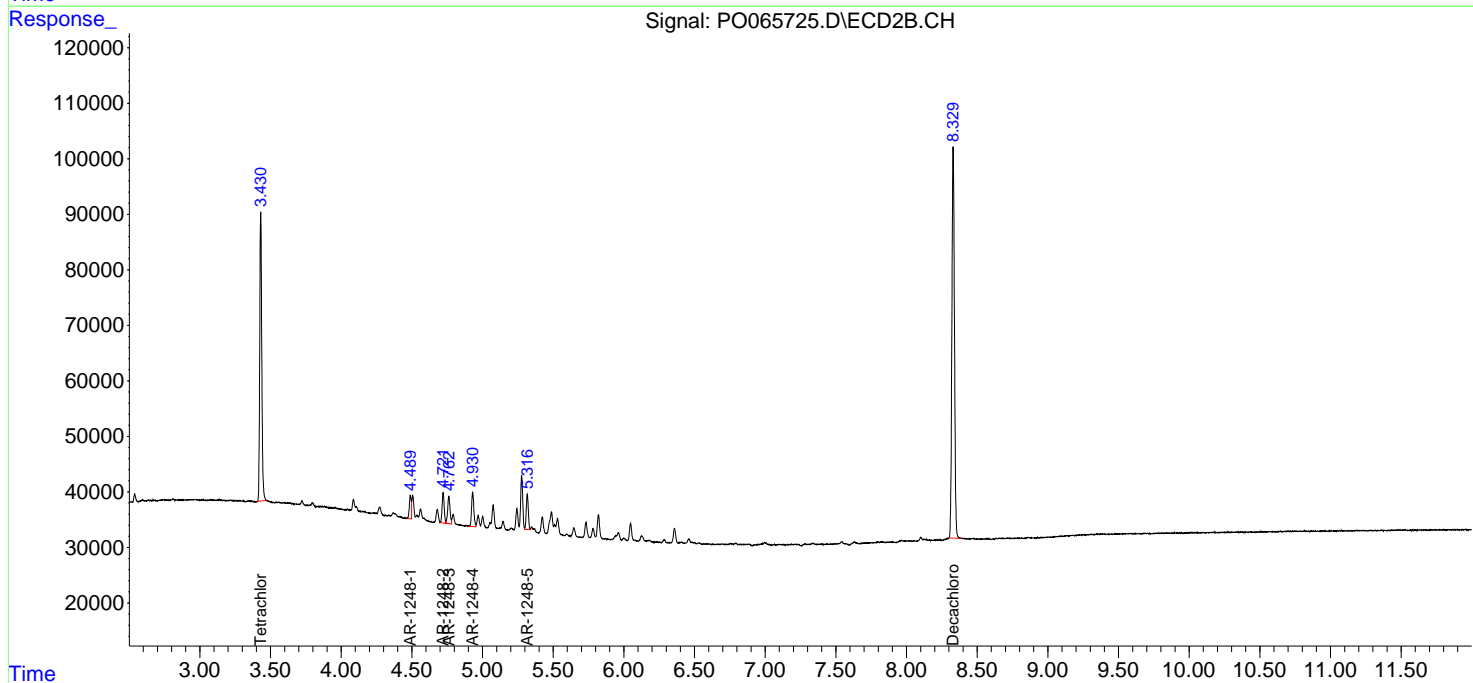
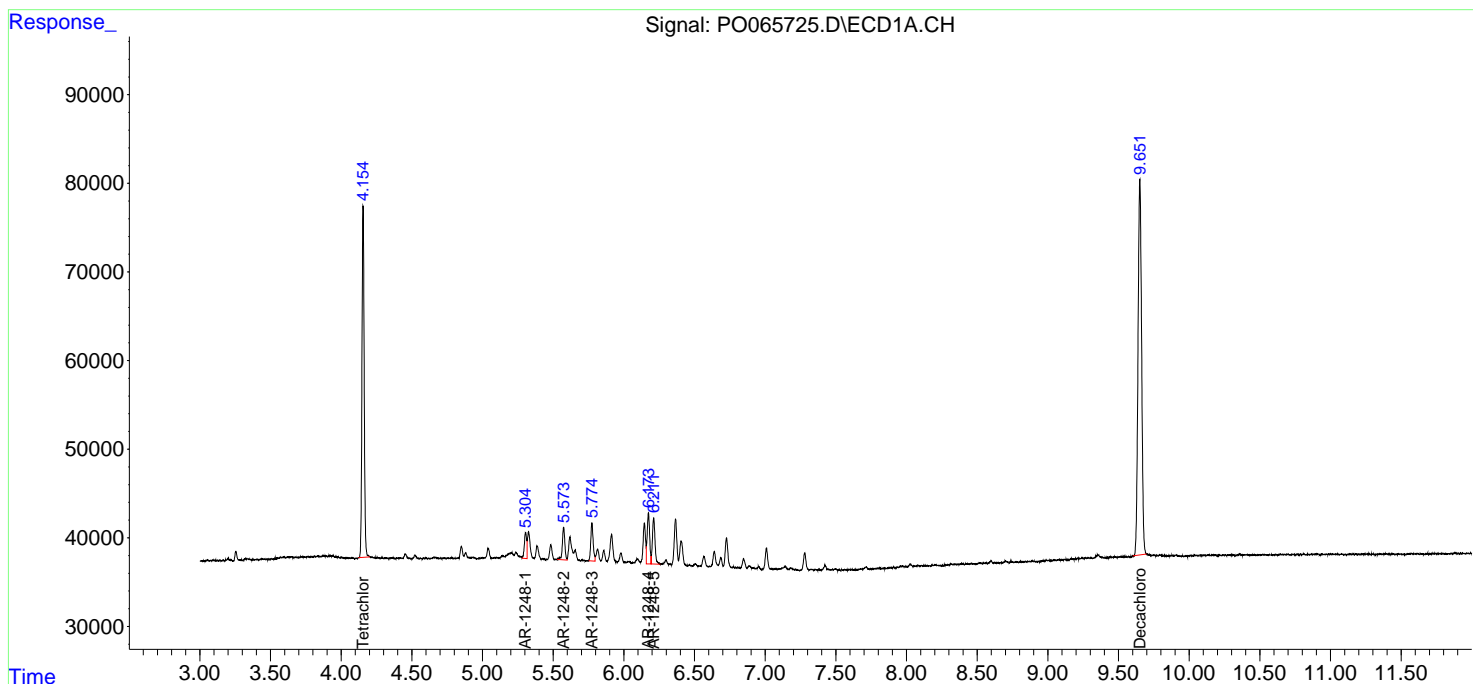
Data Path : Z:\pestpcbsrv\HPCHEM1\ECD\_O\Data\PO012120\  
 Data File : PO065725.D  
 Signal(s) : Signal #1: ECD1A.CH Signal #2: ECD2B.CH  
 Acq On : 21 Jan 2020 19:44  
 Operator : DD\AJ  
 Sample : L1161-02  
 Misc : AR1248 LOQ 50 PPB  
 ALS Vial : 19 Sample Multiplier: 1

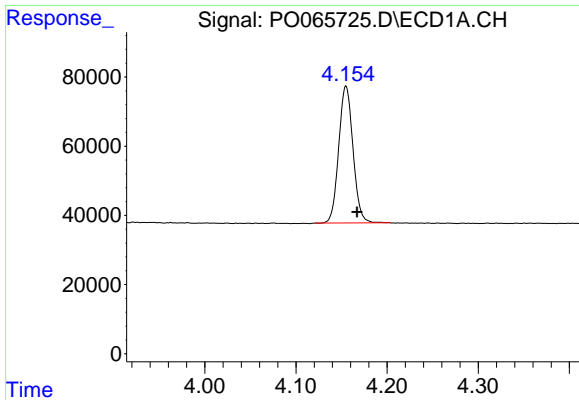
**Instrument :**  
 ECD\_O  
**Client Sampled :**  
 LOQ-SOIL-02-QT1-2020

**Manual Integrations**  
**APPROVED**  
 mohammad  
 1/22/2020 3:27:16 PM

Integration File signal 1: autoint1.e  
 Integration File signal 2: autoint2.e  
 Quant Time: Jan 22 04:25:01 2020  
 Quant Method : Z:\pestpcbsrv\HPCHEM1\ECD\_O\methods\PO010420.M  
 Quant Title : GC EXTRACTABLES  
 QLast Update : Sat Jan 04 04:01:28 2020  
 Response via : Initial Calibration  
 Integrator: ChemStation 6890 Scale Mode: Small noise peaks clipped

Volume Inj. : 2 µl  
 Signal #1 Phase : ZB-MR1 Signal #2 Phase: ZB-MR2  
 Signal #1 Info : 30Mx0.32mmx 0.50µ Signal #2 Info : 30M x 0.32mm x 0.25µm

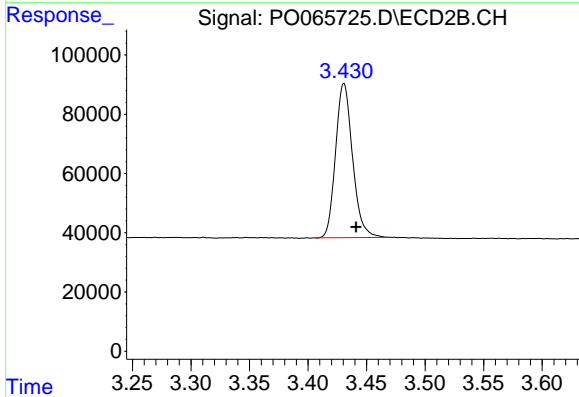




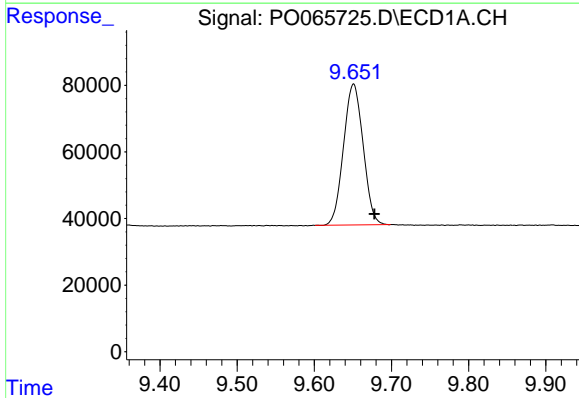
#1 Tetrachloro-m-xylene  
 R.T.: 4.155 min  
 Delta R.T.: -0.012 min  
 Response: 431915  
 Conc: 23.65 ng/ml

Instrument :  
 ECD\_O  
 ClientSampled :  
 LOQ-SOIL-02-QT1-2020

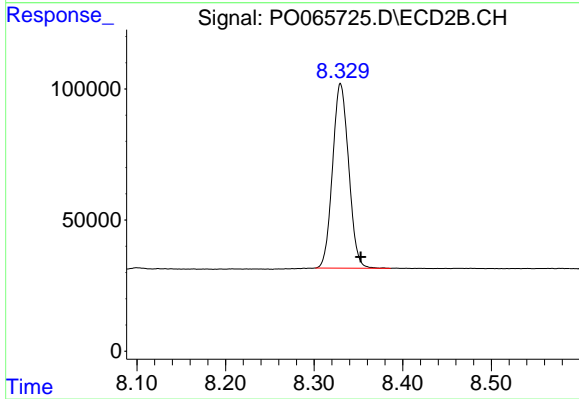
Manual Integrations  
 APPROVED  
 mohammad  
 1/22/2020 3:27:16 PM



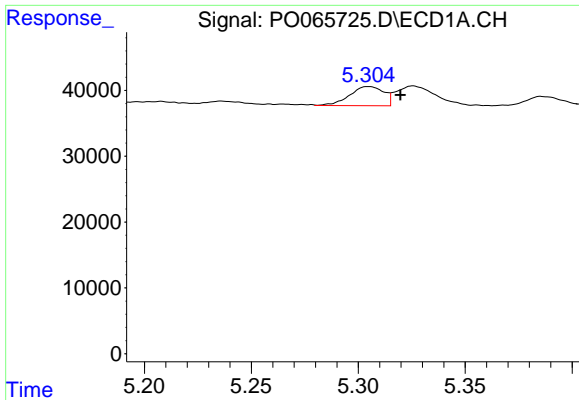
#1 Tetrachloro-m-xylene  
 R.T.: 3.431 min  
 Delta R.T.: -0.010 min  
 Response: 525110  
 Conc: 23.87 ng/ml



#2 Decachlorobiphenyl  
 R.T.: 9.651 min  
 Delta R.T.: -0.027 min  
 Response: 744811  
 Conc: 21.98 ng/ml



#2 Decachlorobiphenyl  
 R.T.: 8.330 min  
 Delta R.T.: -0.023 min  
 Response: 888047  
 Conc: 21.41 ng/ml

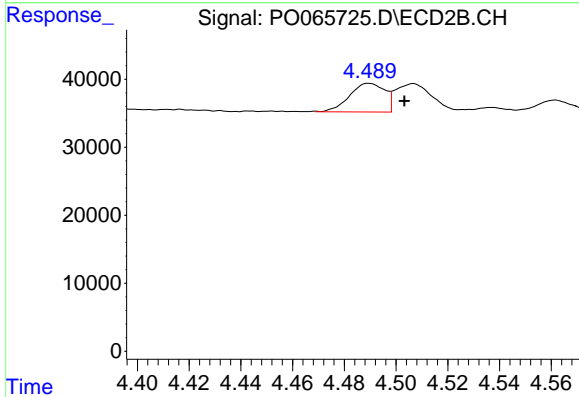


#21 AR-1248-1

R.T.: 5.304 min  
 Delta R.T.: -0.016 min  
 Response: 33709  
 Conc: 72.44 ng/ml m

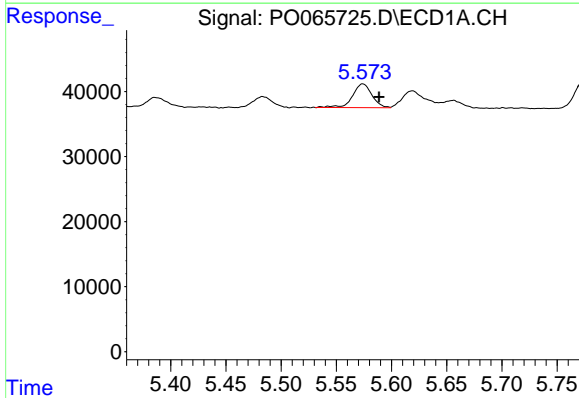
**Instrument :**  
 ECD\_O  
**ClientSampled :**  
 LOQ-SOIL-02-QT1-2020

**Manual Integrations**  
**APPROVED**  
 mohammad  
 1/22/2020 3:27:16 PM



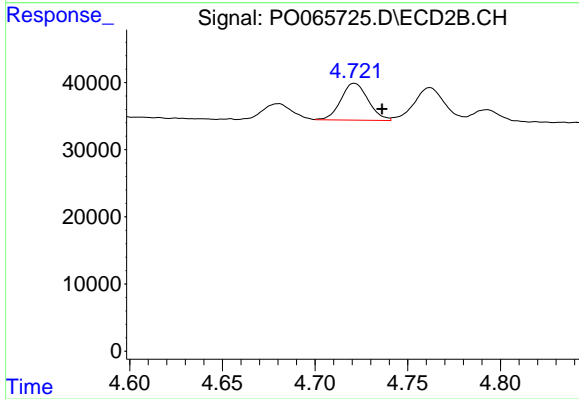
#21 AR-1248-1

R.T.: 4.489 min  
 Delta R.T.: -0.015 min  
 Response: 39647  
 Conc: 71.52 ng/ml m



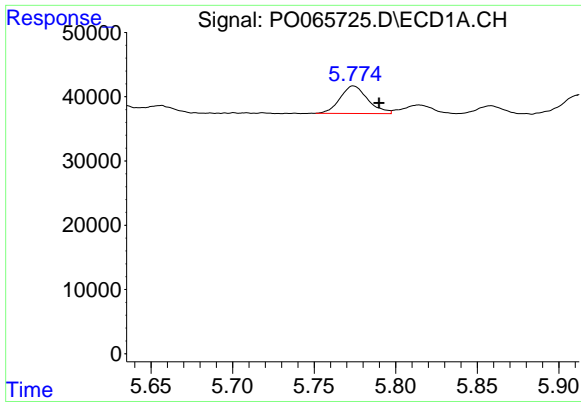
#22 AR-1248-2

R.T.: 5.574 min  
 Delta R.T.: -0.015 min  
 Response: 44637  
 Conc: 67.65 ng/ml



#22 AR-1248-2

R.T.: 4.721 min  
 Delta R.T.: -0.015 min  
 Response: 56044  
 Conc: 73.05 ng/ml



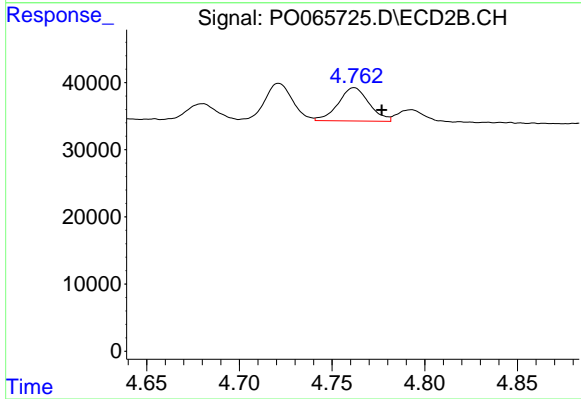
#23 AR-1248-3

R.T.: 5.774 min  
 Delta R.T.: -0.016 min  
 Response: 50579  
 Conc: 67.13 ng/ml

Instrument :  
 ECD\_O  
 ClientSampleId :  
 LOQ-SOIL-02-QT1-2020

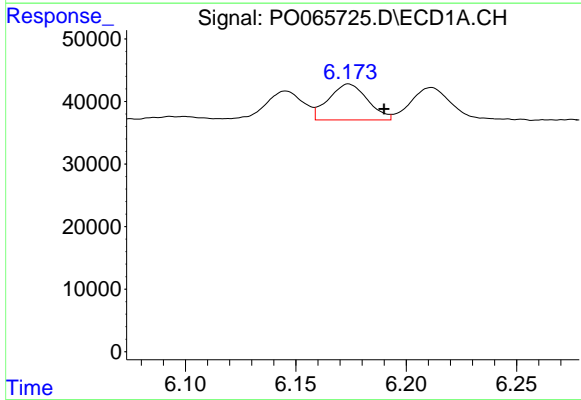
Manual Integrations  
 APPROVED

mohammad  
 1/22/2020 3:27:16 PM



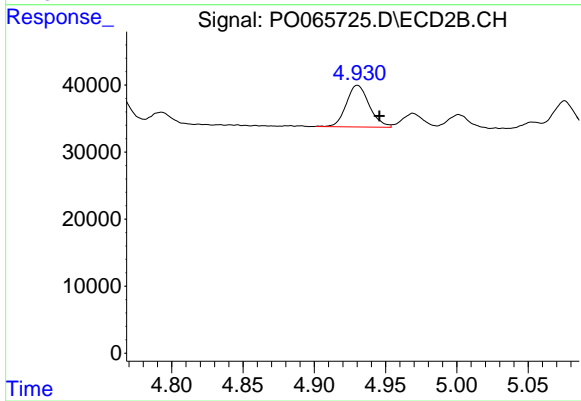
#23 AR-1248-3

R.T.: 4.762 min  
 Delta R.T.: -0.015 min  
 Response: 57429  
 Conc: 72.99 ng/ml



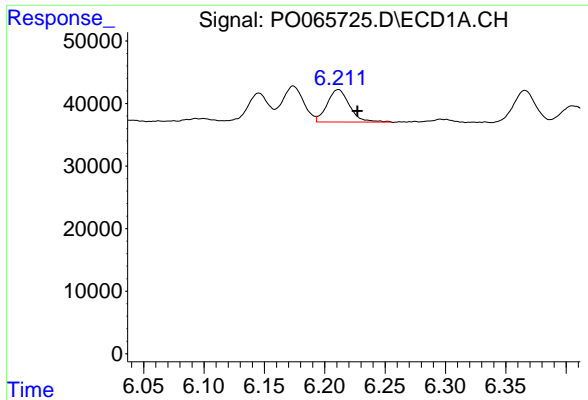
#24 AR-1248-4

R.T.: 6.173 min  
 Delta R.T.: -0.017 min  
 Response: 70003  
 Conc: 73.90 ng/ml m



#24 AR-1248-4

R.T.: 4.930 min  
 Delta R.T.: -0.015 min  
 Response: 69760  
 Conc: 72.78 ng/ml

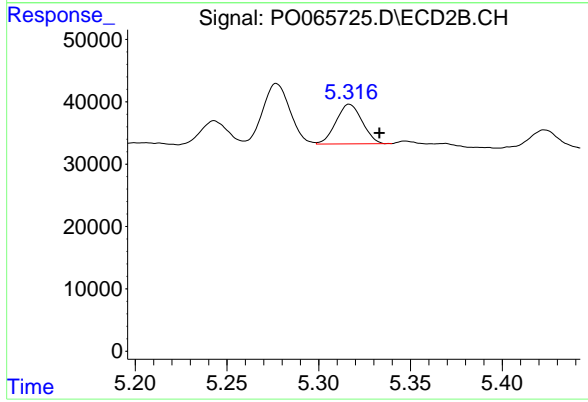


#25 AR-1248-5

R.T.: 6.211 min  
 Delta R.T.: -0.016 min  
 Response: 66564  
 Conc: 72.77 ng/ml m

**Instrument :**  
 ECD\_O  
**ClientSampleId :**  
 LOQ-SOIL-02-QT1-2020

**Manual Integrations**  
**APPROVED**  
 mohammad  
 1/22/2020 3:27:16 PM



#25 AR-1248-5

R.T.: 5.317 min  
 Delta R.T.: -0.016 min  
 Response: 63078  
 Conc: 62.31 ng/ml