

Data Path : Z:\pestpcbsrv\HPCHEM1\ECD\_0\Data\P0012120\  
 Data File : P0065751.D  
 Signal(s) : Signal #1: ECD1A.CH Signal #2: ECD2B.CH  
 Acq On : 22 Jan 2020 3:49  
 Operator : DD\AJ  
 Sample : L1161-07  
 Misc : AR1254 LOD 40 PPB  
 ALS Vial : 41 Sample Multiplier: 1

**Instrument :**  
 ECD\_0  
**ClientSampleId :**  
 LOD-MDL-WATER-01-QT1-2020

**Manual Integrations**  
**APPROVED**  
 mohammad  
 1/22/2020 3:27:44 PM

Integration File signal 1: autoint1.e  
 Integration File signal 2: autoint2.e  
 Quant Time: Jan 22 07:11:37 2020  
 Quant Method : Z:\pestpcbsrv\HPCHEM1\ECD\_0\methods\P0010420.M  
 Quant Title : GC EXTRACTABLES  
 QLast Update : Sat Jan 04 04:01:28 2020  
 Response via : Initial Calibration  
 Integrator: ChemStation 6890 Scale Mode: Small noise peaks clipped

Volume Inj. : 2 µl  
 Signal #1 Phase : ZB-MR1 Signal #2 Phase: ZB-MR2  
 Signal #1 Info : 30Mx0.32mmx 0.50µ Signal #2 Info : 30M x 0.32mm x 0.25µm

Compound	RT#1	RT#2	Resp#1	Resp#2	ng/ml	ng/ml
-----						
System Monitoring Compounds						
1) SA Tetrachlo...	4.154	3.430	465103	547711	25.471	24.899
2) SA Decachlor...	9.651	8.329	825933	989259	24.376	23.855
Target Compounds						
26) L6 AR-1254-1	6.145	5.276	59262	99772	69.857m	68.869
27) L6 AR-1254-2	6.363	5.422	95647	93517	69.601	70.700
28) L6 AR-1254-3	6.725	5.819	107317	136257	69.241	60.464
29) L6 AR-1254-4	7.009	6.046	85441	92454	67.028	61.326m
30) L6 AR-1254-5	7.423	6.459	82046	126199	58.424m	56.695
-----						

(f)=RT Delta > 1/2 Window (#)=Amounts differ by > 25% (m)=manual int.

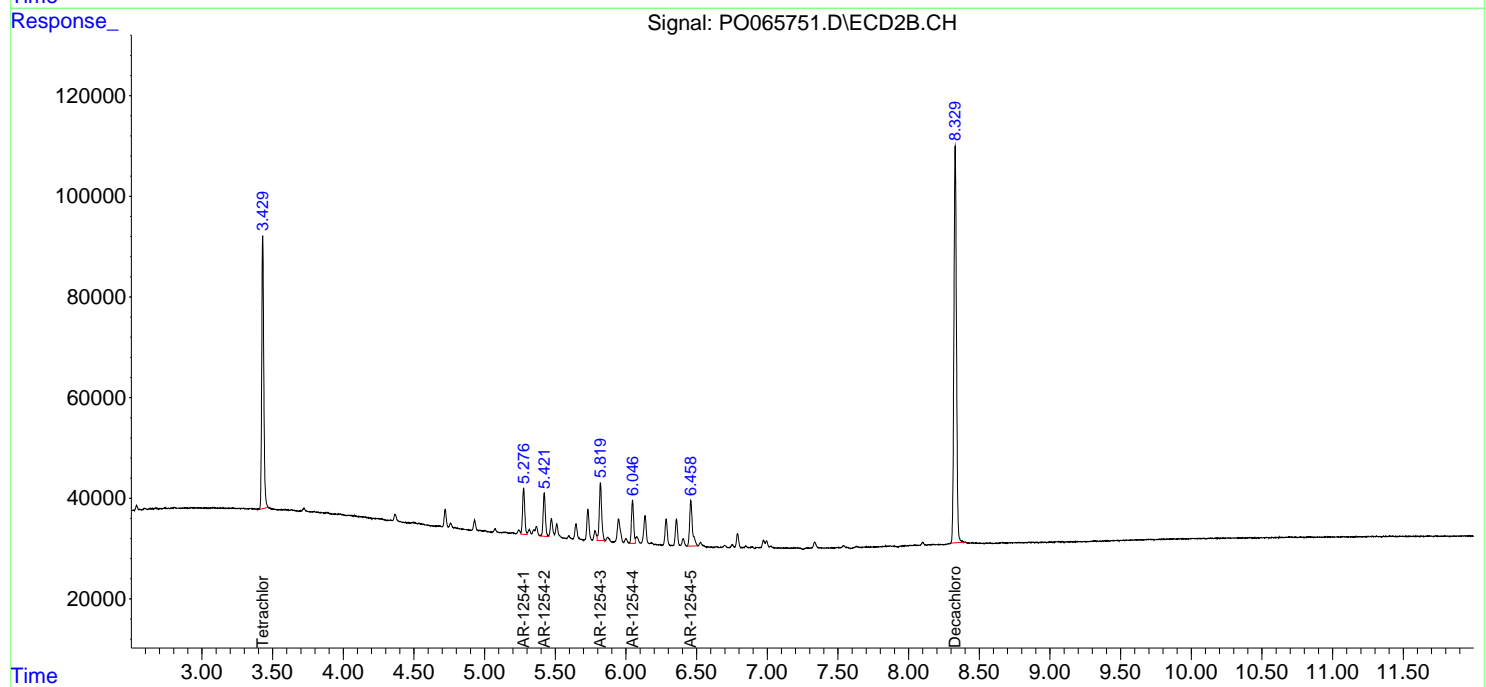
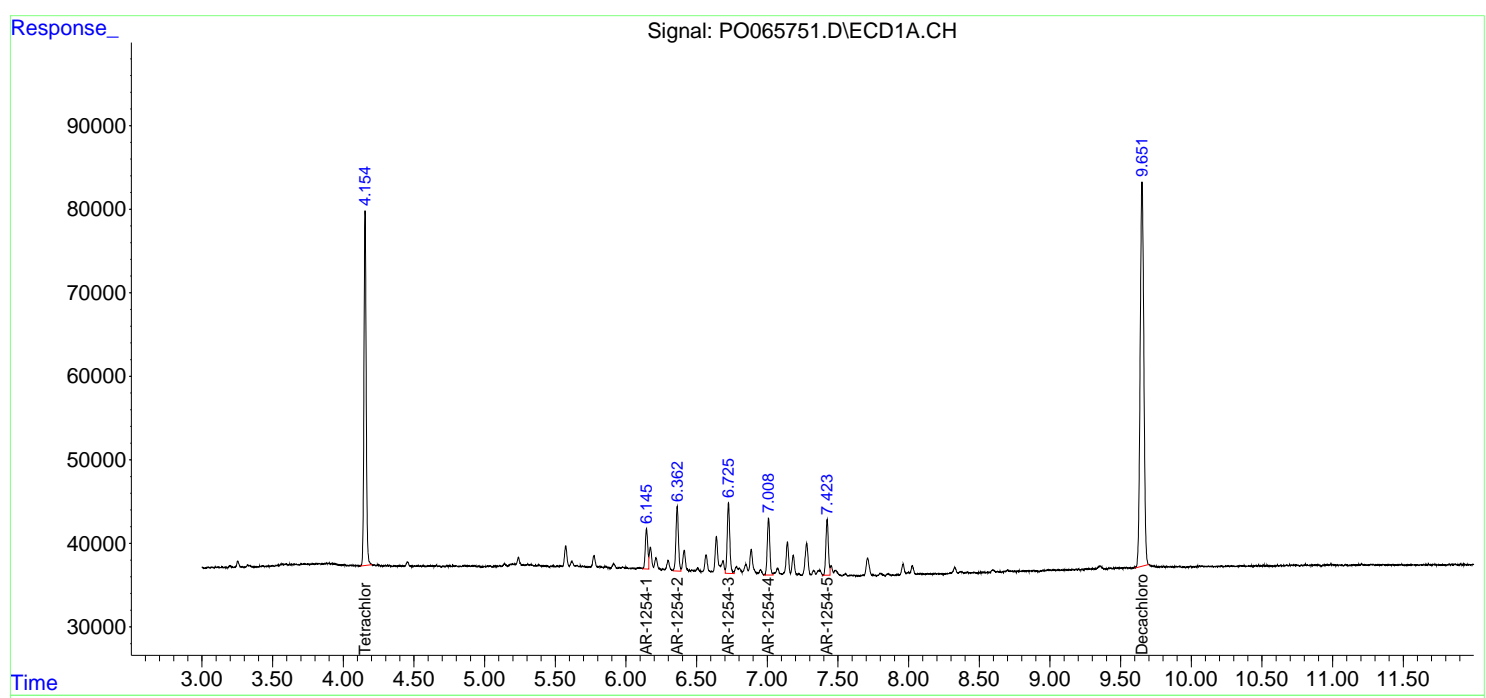
Data Path : Z:\pestpcbsrv\HPCHEM1\ECD\_O\Data\P0012120\  
 Data File : P0065751.D  
 Signal(s) : Signal #1: ECD1A.CH Signal #2: ECD2B.CH  
 Acq On : 22 Jan 2020 3:49  
 Operator : DD\AJ  
 Sample : L1161-07  
 Misc : AR1254 LOD 40 PPB  
 ALS Vial : 41 Sample Multiplier: 1

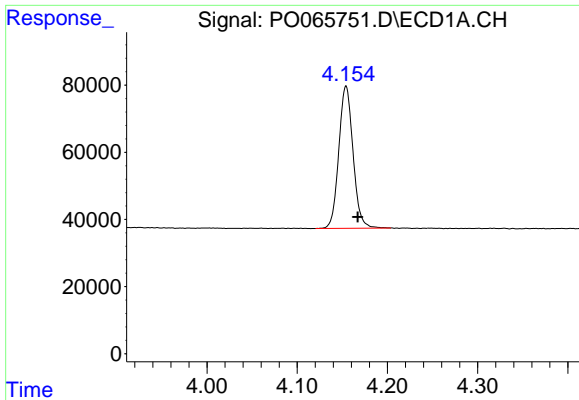
**Instrument :**  
 ECD\_O  
**Client Sampled :**  
 LOD-MDL-WATER-01-QT1-2020

**Manual Integrations**  
**APPROVED**  
 mohammad  
 1/22/2020 3:27:44 PM

Integration File signal 1: autoint1.e  
 Integration File signal 2: autoint2.e  
 Quant Time: Jan 22 07:11:37 2020  
 Quant Method : Z:\pestpcbsrv\HPCHEM1\ECD\_O\methods\P0010420.M  
 Quant Title : GC EXTRACTABLES  
 QLast Update : Sat Jan 04 04:01:28 2020  
 Response via : Initial Calibration  
 Integrator: ChemStation 6890 Scale Mode: Small noise peaks clipped

Volume Inj. : 2 µl  
 Signal #1 Phase : ZB-MR1 Signal #2 Phase: ZB-MR2  
 Signal #1 Info : 30Mx0.32mmx 0.50µ Signal #2 Info : 30M x 0.32mm x 0.25µm

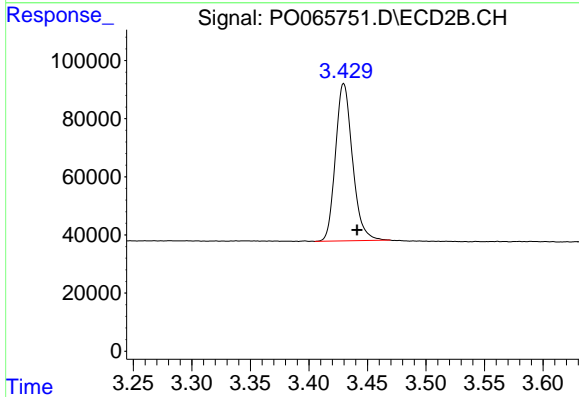




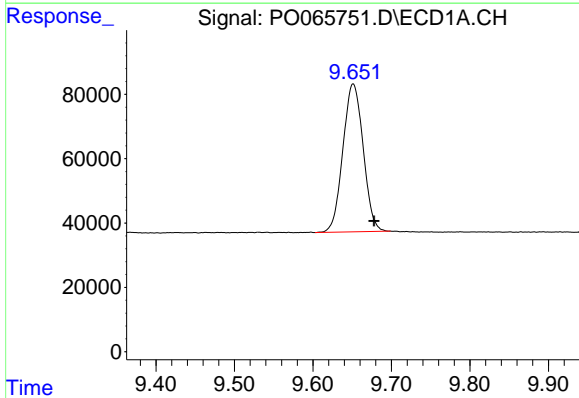
#1 Tetrachloro-m-xylene  
 R.T.: 4.154 min  
 Delta R.T.: -0.013 min  
 Response: 465103  
 Conc: 25.47 ng/ml

Instrument :  
 ECD\_O  
 ClientSampled :  
 LOD-MDL-WATER-01-QT1-2020

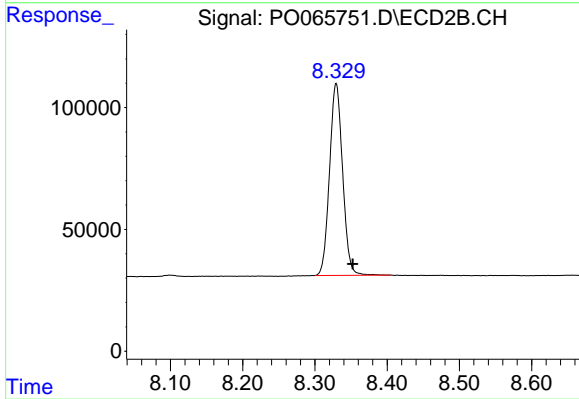
Manual Integrations  
 APPROVED  
 mohammad  
 1/22/2020 3:27:44 PM



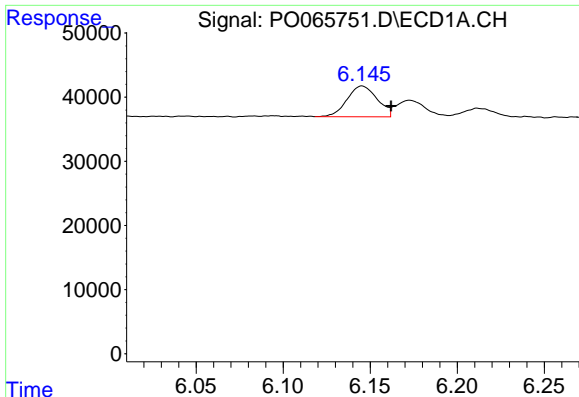
#1 Tetrachloro-m-xylene  
 R.T.: 3.430 min  
 Delta R.T.: -0.011 min  
 Response: 547711  
 Conc: 24.90 ng/ml



#2 Decachlorobiphenyl  
 R.T.: 9.651 min  
 Delta R.T.: -0.027 min  
 Response: 825933  
 Conc: 24.38 ng/ml



#2 Decachlorobiphenyl  
 R.T.: 8.329 min  
 Delta R.T.: -0.023 min  
 Response: 989259  
 Conc: 23.85 ng/ml



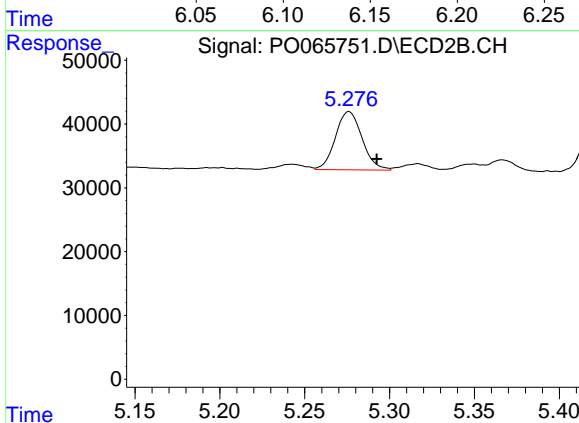
#26 AR-1254-1

R.T.: 6.145 min  
 Delta R.T.: -0.017 min  
 Response: 59262  
 Conc: 69.86 ng/ml m

Instrument :  
 ECD\_O  
 ClientSampleId :  
 LOD-MDL-WATER-01-QT1-2020

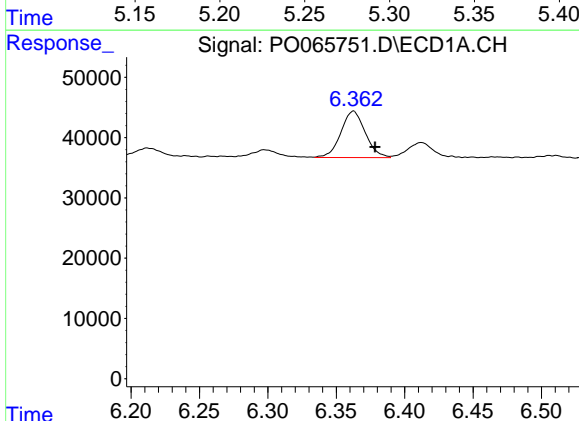
Manual Integrations  
 APPROVED

mohammad  
 1/22/2020 3:27:44 PM



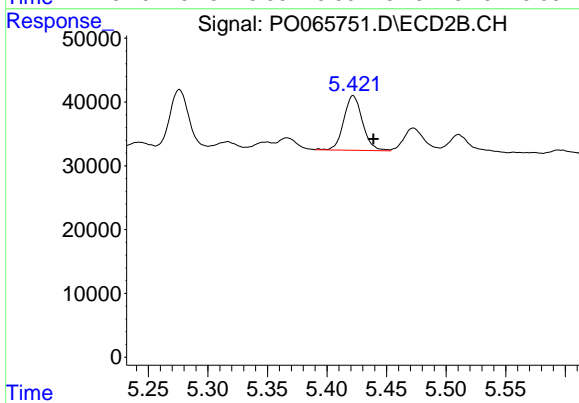
#26 AR-1254-1

R.T.: 5.276 min  
 Delta R.T.: -0.016 min  
 Response: 99772  
 Conc: 68.87 ng/ml



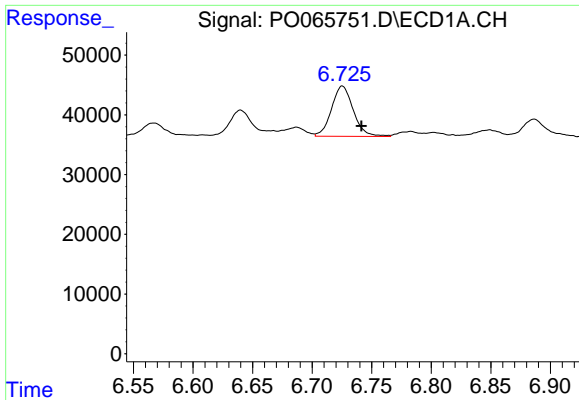
#27 AR-1254-2

R.T.: 6.363 min  
 Delta R.T.: -0.016 min  
 Response: 95647  
 Conc: 69.60 ng/ml



#27 AR-1254-2

R.T.: 5.422 min  
 Delta R.T.: -0.017 min  
 Response: 93517  
 Conc: 70.70 ng/ml

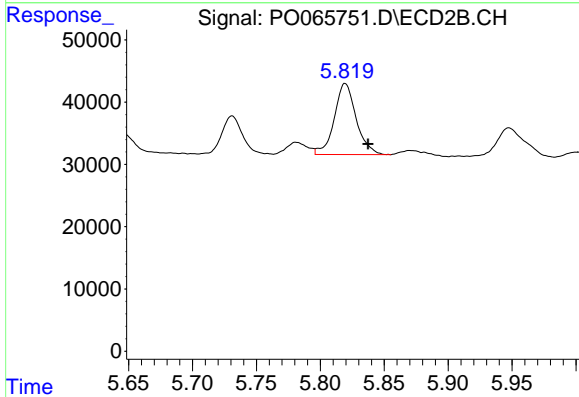


#28 AR-1254-3

R.T.: 6.725 min  
 Delta R.T.: -0.016 min  
 Response: 107317  
 Conc: 69.24 ng/ml

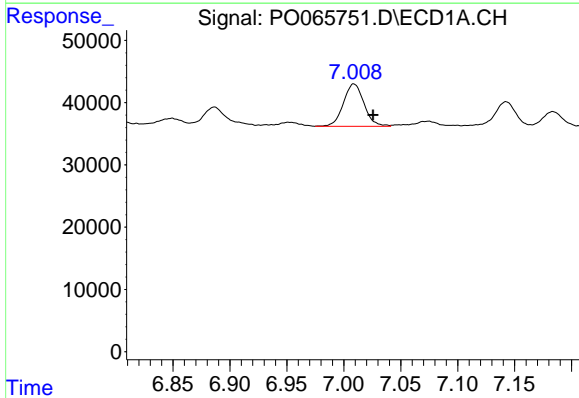
**Instrument :**  
 ECD\_O  
**ClientSampled :**  
 LOD-MDL-WATER-01-QT1-2020

**Manual Integrations**  
**APPROVED**  
 mohammad  
 1/22/2020 3:27:44 PM



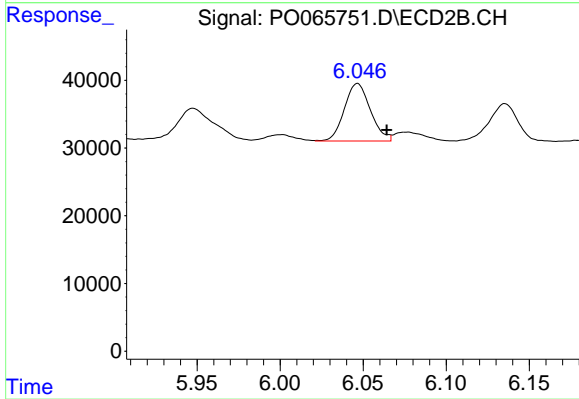
#28 AR-1254-3

R.T.: 5.819 min  
 Delta R.T.: -0.018 min  
 Response: 136257  
 Conc: 60.46 ng/ml



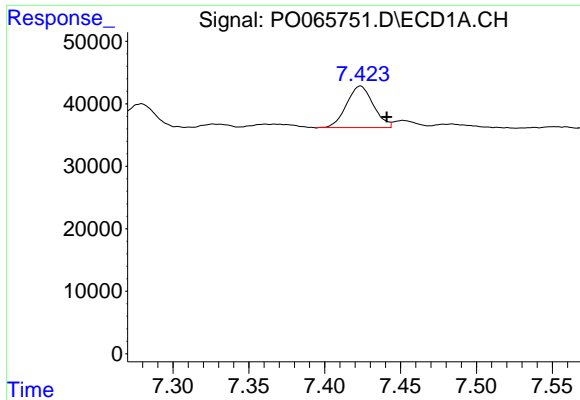
#29 AR-1254-4

R.T.: 7.009 min  
 Delta R.T.: -0.017 min  
 Response: 85441  
 Conc: 67.03 ng/ml



#29 AR-1254-4

R.T.: 6.046 min  
 Delta R.T.: -0.018 min  
 Response: 92454  
 Conc: 61.33 ng/ml m

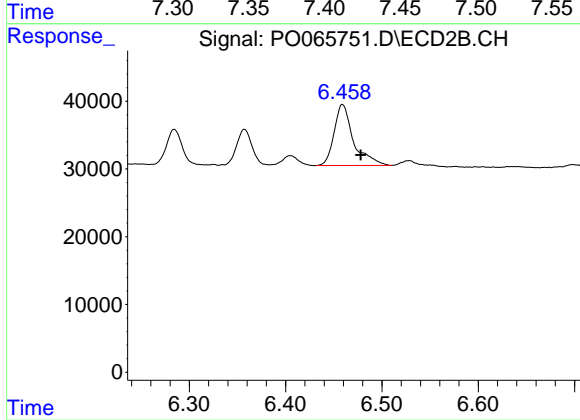


#30 AR-1254-5

R.T.: 7.423 min  
Delta R.T.: -0.017 min  
Response: 82046  
Conc: 58.42 ng/ml m

Instrument :  
ECD\_O  
ClientSampleId :  
LOD-MDL-WATER-01-QT1-2020

Manual Integrations  
APPROVED  
mohammad  
1/22/2020 3:27:44 PM



#30 AR-1254-5

R.T.: 6.459 min  
Delta R.T.: -0.019 min  
Response: 126199  
Conc: 56.69 ng/ml