

Data Path : Z:\pestpcbsrv\HPCHEM1\ECD\_0\Data\P0012121\  
 Data File : P0075051.D  
 Signal(s) : Signal #1: ECD1A.CH Signal #2: ECD2B.CH  
 Acq On : 21 Jan 2021 17:23  
 Operator : AJ/MA  
 Sample : M1113-23  
 Misc :  
 ALS Vial : 26 Sample Multiplier: 1

Instrument :  
 ECD\_0  
 ClientSampled :

Integration File signal 1: autoint1.e  
 Integration File signal 2: autoint2.e  
 Quant Time: Jan 22 00:28:11 2021  
 Quant Method : Z:\pestpcbsrv\HPCHEM1\ECD\_0\methods\P0011121.M  
 Quant Title : GC EXTRACTABLES  
 QLast Update : Tue Jan 12 06:02:45 2021  
 Response via : Initial Calibration  
 Integrator: ChemStation 6890 Scale Mode: Small noise peaks clipped

Volume Inj. : 2 µl  
 Signal #1 Phase : ZB-MR1 Signal #2 Phase: ZB-MR2  
 Signal #1 Info : 30Mx0.32mmx 0.50µ Signal #2 Info : 30M x 0.32mm x 0.25µm

Compound	RT#1	RT#2	Resp#1	Resp#2	ng/ml	ng/ml
System Monitoring Compounds						
1) SA Tetrachlo...	4.928	4.001	2307926	1242178	21.872	22.082
2) SA Decachlor...	10.948	9.255	2864366	1377585	28.222	25.091
Target Compounds						
3) L1 AR-1016-1	0.000	5.264	0	26393	N.D.	11.539 #
4) L1 AR-1016-2	6.304f	5.264	131460	26393	23.084	8.353 #
5) L1 AR-1016-3	0.000	5.455	0	22458	N.D.	13.083 #
6) L1 AR-1016-4	0.000	5.507	0	69812	N.D.	49.674 #
7) L1 AR-1016-5	6.767	5.732	84798	34614	31.004	20.129 #
8) L2 AR-1221-1	5.183	4.246f	85898	38010	69.932	53.497
9) L2 AR-1221-2	0.000	4.349	0	31242	N.D.	58.458 #
10) L2 AR-1221-3	5.381	0.000	59390	0	21.080	N.D. #
11) L3 AR-1232-1	5.381	0.000	59390	0	25.931	N.D. #
12) L3 AR-1232-2	0.000	5.264	0	26393	N.D.	19.546 #
13) L3 AR-1232-3	6.304f	5.455	131460	22458	54.482	30.613 #
14) L3 AR-1232-4	0.000	5.550	0	23562	N.D.	37.051 #
15) L3 AR-1232-5	6.546	5.732	194433	34614	238.963	49.848 #
16) L4 AR-1242-1	0.000	5.264	0	26393	N.D.	14.319 #
17) L4 AR-1242-2	6.304f	5.264	131460	26393	29.130	10.485 #
18) L4 AR-1242-3	0.000	5.455	0	22458	N.D.	16.538 #
19) L4 AR-1242-4	0.000	5.550	0	23562	N.D.	18.028 #
20) L4 AR-1242-5	7.236	6.111	159007	349648	63.186	199.704 #
21) L5 AR-1248-1	0.000	5.264	0	26393	N.D.	19.190 #
22) L5 AR-1248-2	6.546	5.507	194433	69812	62.518	37.147 #
23) L5 AR-1248-3	6.767	5.550	84798	23562	23.417	12.483 #
24) L5 AR-1248-4	7.195	5.732	204496	34614	45.856	15.368 #
25) L5 AR-1248-5	7.236	6.146	159007	108490	37.732	46.146
26) L6 AR-1254-1	7.166	6.111	530342	349648	120.583	96.802
27) L6 AR-1254-2	7.396	6.268	946495	322336	138.970	103.428 #
28) L6 AR-1254-3	7.779	6.685	592218	381369	84.430	77.768
29) L6 AR-1254-4	8.075	6.923	553136	290934	91.206	83.896
30) L6 AR-1254-5	8.504	7.348	807205	428686	138.959	94.717 #
31) L7 AR-1260-1	7.946	6.821	313348	280723	62.811	87.993 #
32) L7 AR-1260-2	8.211	7.018	688914	270988	101.280	63.746 #
33) L7 AR-1260-3	8.579	7.169	1005125	170399	175.362	47.288 #
34) L7 AR-1260-4	8.826f	7.648	2185088	908234	399.372	290.048 #
35) L7 AR-1260-5	9.136	7.896	341262	212750	27.312	26.766
36) L8 AR-1262-1	8.579	7.348	1005125	428686	112.882	168.470 #
37) L8 AR-1262-2	9.136	7.896	341262	212750	22.290	23.139
38) L8 AR-1262-3	9.446	8.182	6720484	3204121	670.989	810.284
39) L8 AR-1262-4	9.542	8.246	3611552	1919117	484.945	289.669 #
40) L8 AR-1262-5	10.206	8.739	773747	435465	147.899	141.045
41) L9 AR-1268-1	9.446	8.182	6720484	3204121	359.703	286.216

Data Path : Z:\pestpcbsrv\HPCHEM1\ECD\_0\Data\P0012121\  
 Data File : P0075051.D  
 Signal(s) : Signal #1: ECD1A.CH Signal #2: ECD2B.CH  
 Acq On : 21 Jan 2021 17:23  
 Operator : AJ/MA  
 Sample : M1113-23  
 Misc :  
 ALS Vial : 26 Sample Multiplier: 1

Instrument :  
 ECD\_0  
 ClientSampleId :

Integration File signal 1: autoint1.e  
 Integration File signal 2: autoint2.e  
 Quant Time: Jan 22 00:28:11 2021  
 Quant Method : Z:\pestpcbsrv\HPCHEM1\ECD\_0\methods\P0011121.M  
 Quant Title : GC EXTRACTABLES  
 QLast Update : Tue Jan 12 06:02:45 2021  
 Response via : Initial Calibration  
 Integrator: ChemStation 6890 Scale Mode: Small noise peaks clipped

Volume Inj. : 2 µl  
 Signal #1 Phase : ZB-MR1 Signal #2 Phase: ZB-MR2  
 Signal #1 Info : 30Mx0.32mmx 0.50µ Signal #2 Info : 30M x 0.32mm x 0.25µm

	Compound	RT#1	RT#2	Resp#1	Resp#2	ng/ml	ng/ml
42)	L9 AR-1268-2	9.542	8.246	3611552	1919117	226.360	200.593
43)	L9 AR-1268-3	9.766	8.452	4923086	2399559	346.648	288.795
44)	L9 AR-1268-4	10.206	8.739	773747	435465	132.072	125.525
45)	L9 AR-1268-5	10.616	9.015	13824554	6512045	330.824	275.015

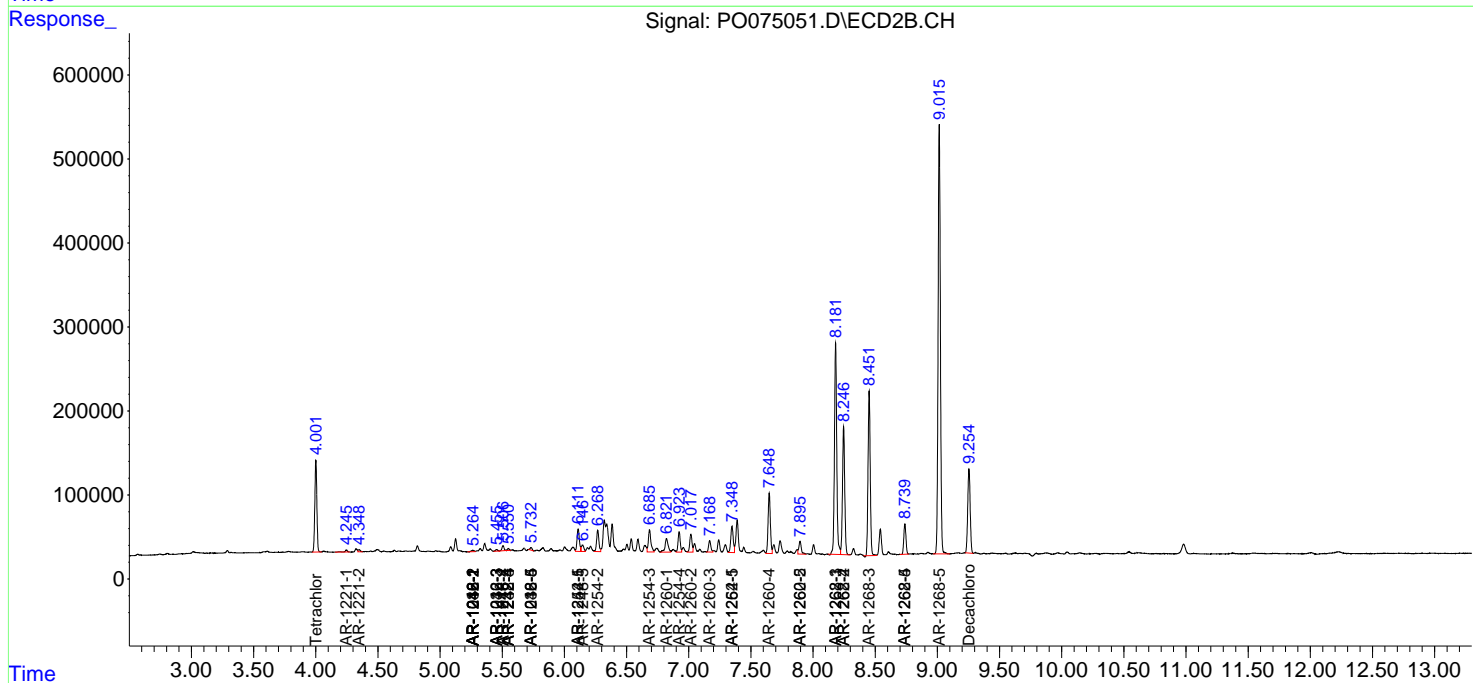
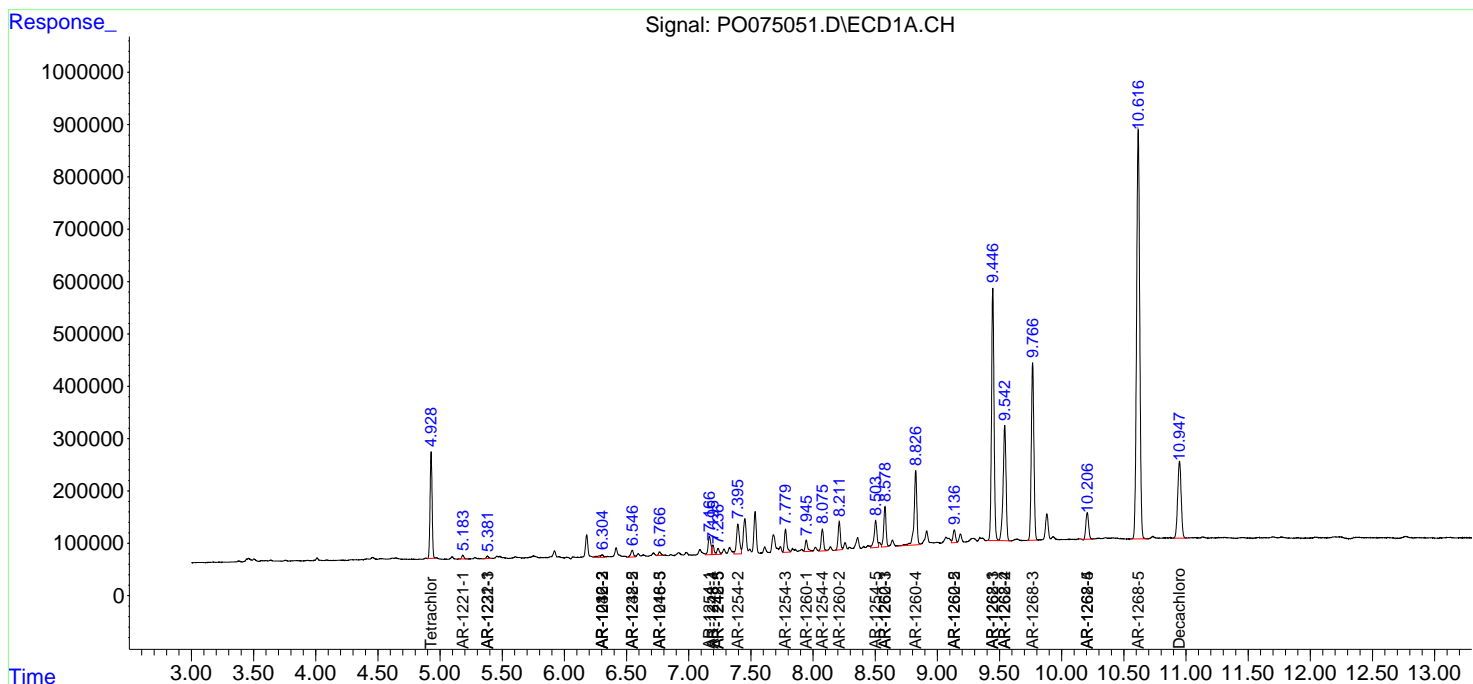
(f)=RT Delta > 1/2 Window (#)=Amounts differ by > 25% (m)=manual int.

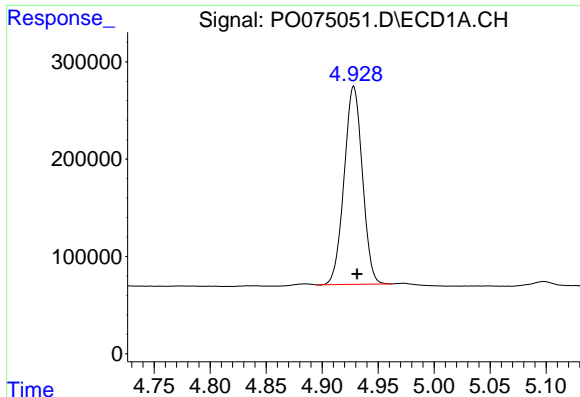
Data Path : Z:\pestpcbsrv\HPCHEM1\ECD\_O\Data\P0012121\  
 Data File : P0075051.D  
 Signal(s) : Signal #1: ECD1A.CH Signal #2: ECD2B.CH  
 Acq On : 21 Jan 2021 17:23  
 Operator : AJ/MA  
 Sample : M1113-23  
 Misc :  
 ALS Vial : 26 Sample Multiplier: 1

Instrument :  
 ECD\_O  
 ClientSampled :

Integration File signal 1: autoint1.e  
 Integration File signal 2: autoint2.e  
 Quant Time: Jan 22 00:28:11 2021  
 Quant Method : Z:\pestpcbsrv\HPCHEM1\ECD\_O\methods\P0011121.M  
 Quant Title : GC EXTRACTABLES  
 QLast Update : Tue Jan 12 06:02:45 2021  
 Response via : Initial Calibration  
 Integrator: ChemStation 6890 Scale Mode: Small noise peaks clipped

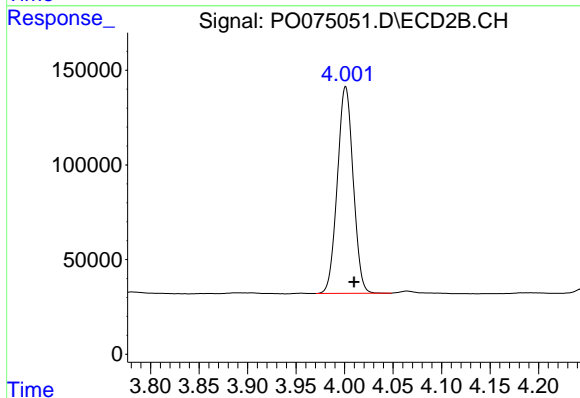
Volume Inj. : 2 µl  
 Signal #1 Phase : ZB-MR1 Signal #2 Phase: ZB-MR2  
 Signal #1 Info : 30Mx0.32mmx 0.50µ Signal #2 Info : 30M x 0.32mm x 0.25µm



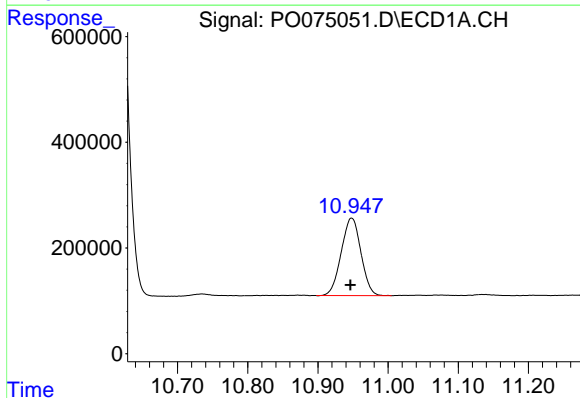


#1 Tetrachloro-m-xylene  
 R.T.: 4.928 min  
 Delta R.T.: -0.003 min  
 Response: 2307926  
 Conc: 21.87 ng/ml

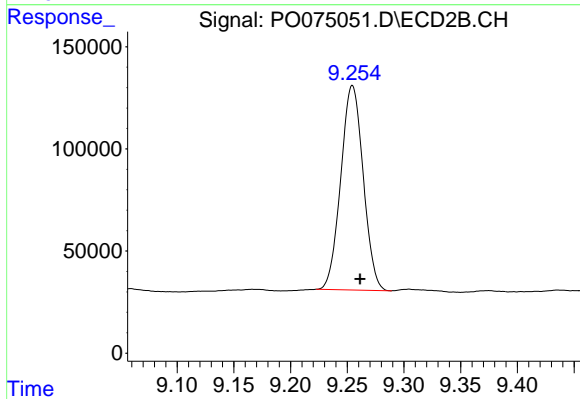
Instrument :  
 ECD\_O  
 ClientSampleId :



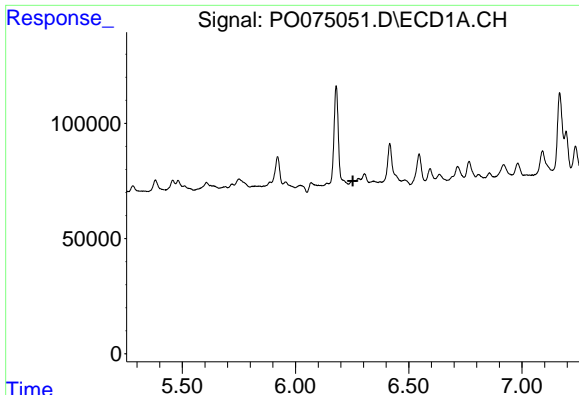
#1 Tetrachloro-m-xylene  
 R.T.: 4.001 min  
 Delta R.T.: -0.009 min  
 Response: 1242178  
 Conc: 22.08 ng/ml



#2 Decachlorobiphenyl  
 R.T.: 10.948 min  
 Delta R.T.: 0.002 min  
 Response: 2864366  
 Conc: 28.22 ng/ml



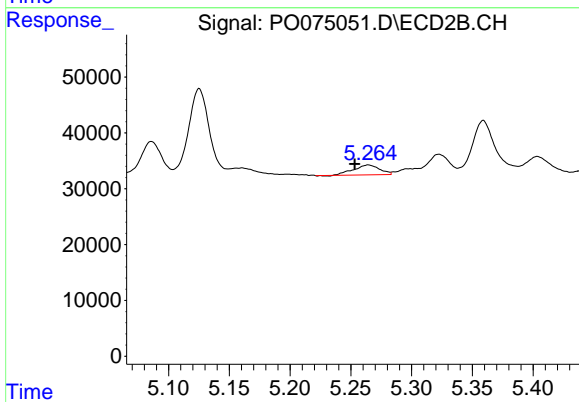
#2 Decachlorobiphenyl  
 R.T.: 9.255 min  
 Delta R.T.: -0.007 min  
 Response: 1377585  
 Conc: 25.09 ng/ml



#3 AR-1016-1

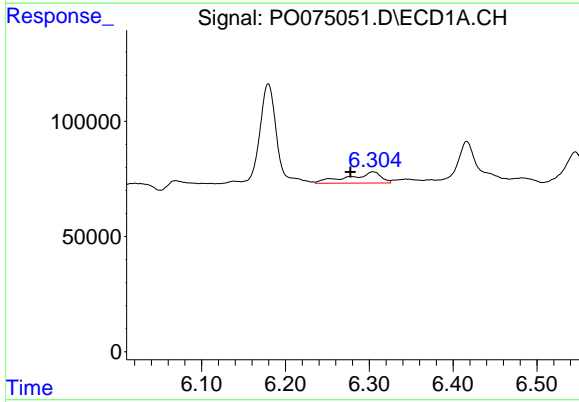
R.T.: 0.000 min  
 Exp R.T.: 6.254 min  
 Response: 0  
 Conc: N.D.

Instrument :  
 ECD\_O  
 ClientSampleId :



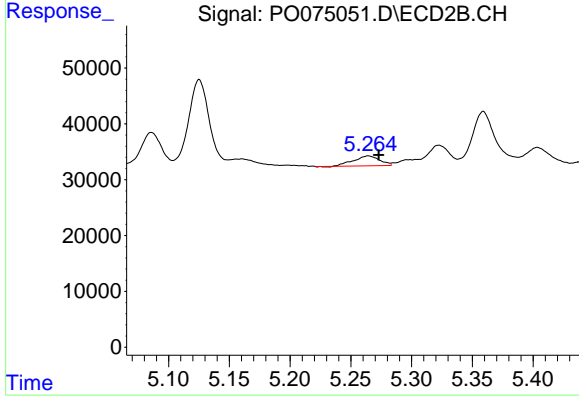
#3 AR-1016-1

R.T.: 5.264 min  
 Delta R.T.: 0.011 min  
 Response: 26393  
 Conc: 11.54 ng/ml



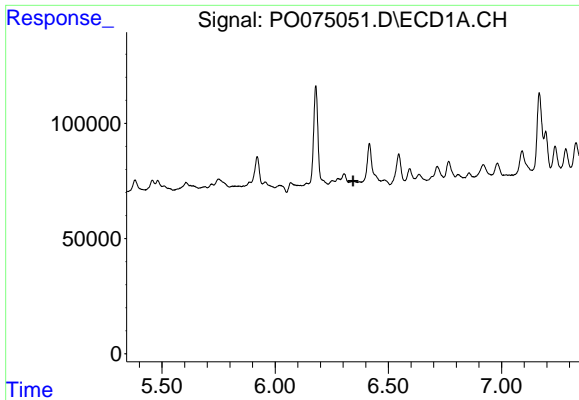
#4 AR-1016-2

R.T.: 6.304 min  
 Delta R.T.: 0.027 min  
 Response: 131460  
 Conc: 23.08 ng/ml



#4 AR-1016-2

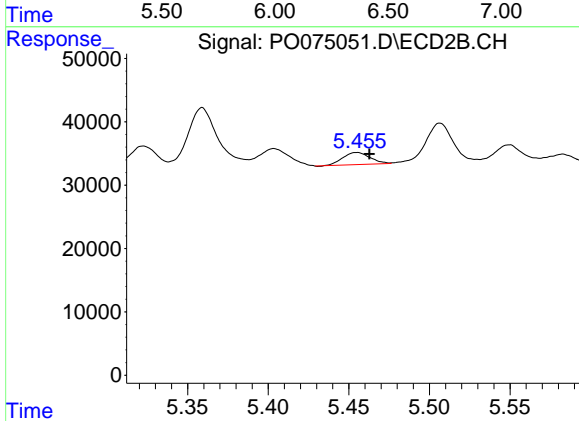
R.T.: 5.264 min  
 Delta R.T.: -0.008 min  
 Response: 26393  
 Conc: 8.35 ng/ml



#5 AR-1016-3

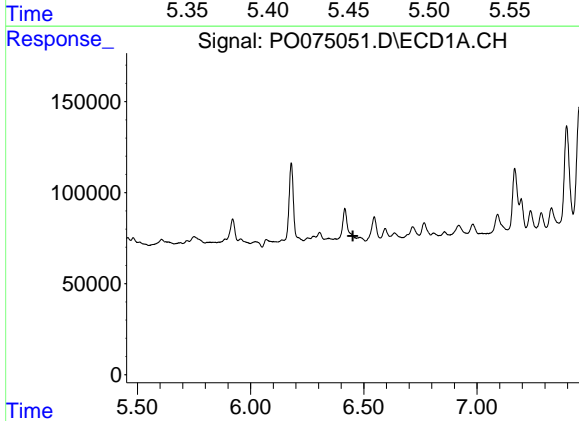
R.T.: 0.000 min  
 Exp R.T.: 6.344 min  
 Response: 0  
 Conc: N.D.

Instrument :  
 ECD\_O  
 ClientSampleId :



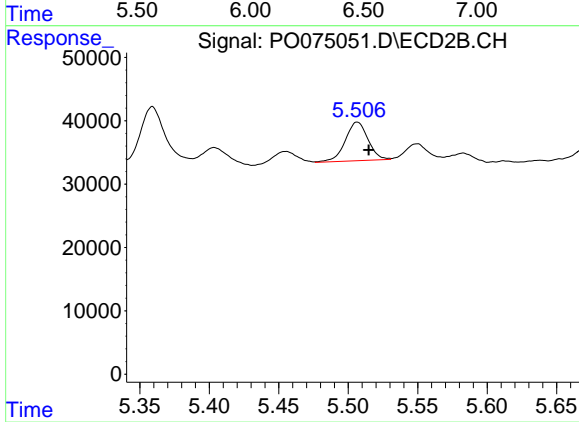
#5 AR-1016-3

R.T.: 5.455 min  
 Delta R.T.: -0.008 min  
 Response: 22458  
 Conc: 13.08 ng/ml



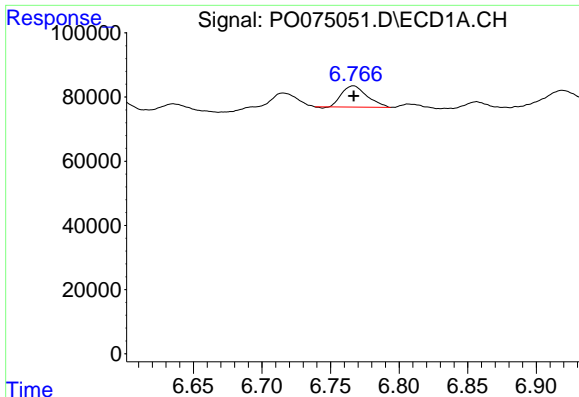
#6 AR-1016-4

R.T.: 0.000 min  
 Exp R.T.: 6.452 min  
 Response: 0  
 Conc: N.D.



#6 AR-1016-4

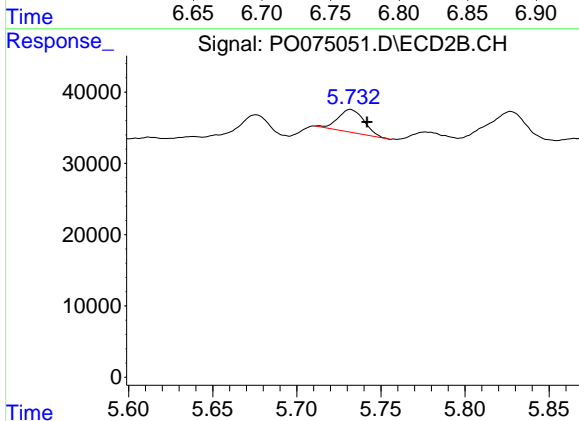
R.T.: 5.507 min  
 Delta R.T.: -0.008 min  
 Response: 69812  
 Conc: 49.67 ng/ml



#7 AR-1016-5

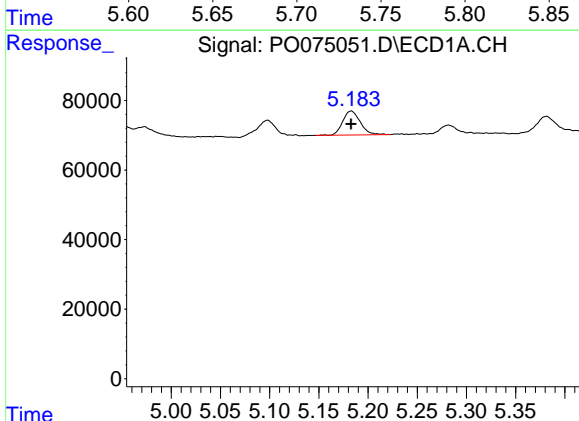
R.T.: 6.767 min  
 Delta R.T.: 0.000 min  
 Response: 84798  
 Conc: 31.00 ng/ml

Instrument :  
 ECD\_O  
 ClientSampled :



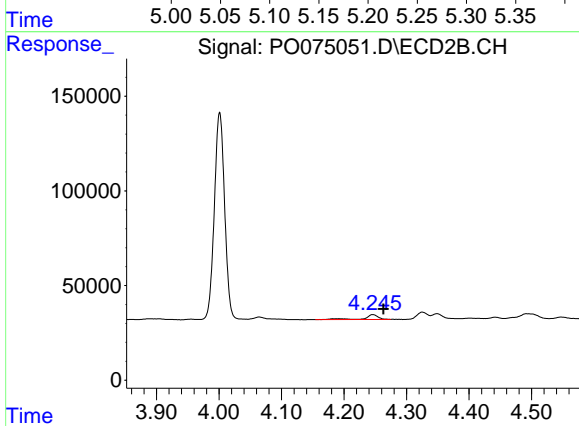
#7 AR-1016-5

R.T.: 5.732 min  
 Delta R.T.: -0.010 min  
 Response: 34614  
 Conc: 20.13 ng/ml



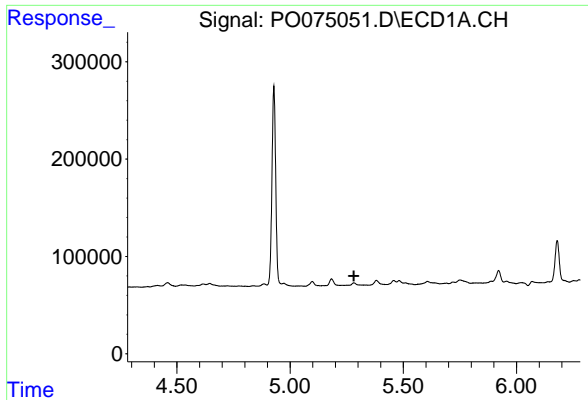
#8 AR-1221-1

R.T.: 5.183 min  
 Delta R.T.: 0.000 min  
 Response: 85898  
 Conc: 69.93 ng/ml



#8 AR-1221-1

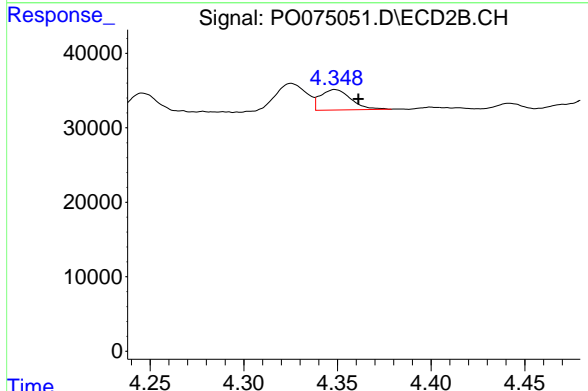
R.T.: 4.246 min  
 Delta R.T.: -0.017 min  
 Response: 38010  
 Conc: 53.50 ng/ml



#9 AR-1221-2

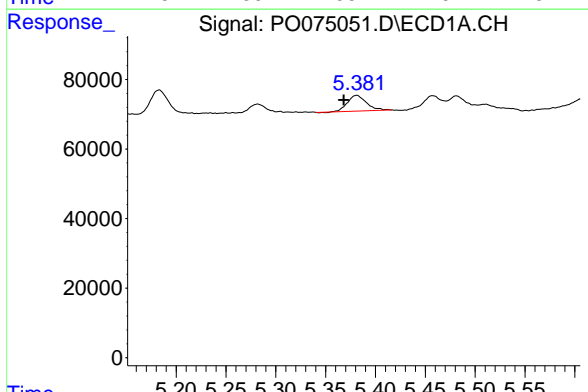
R.T.: 0.000 min  
 Exp R.T.: 5.282 min  
 Response: 0  
 Conc: N.D.

Instrument :  
 ECD\_O  
 ClientSampled :



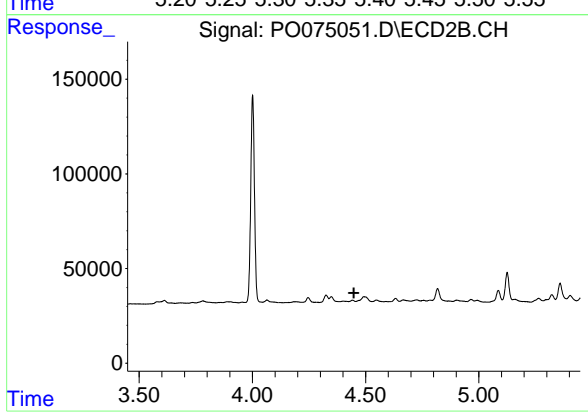
#9 AR-1221-2

R.T.: 4.349 min  
 Delta R.T.: -0.012 min  
 Response: 31242  
 Conc: 58.46 ng/ml



#10 AR-1221-3

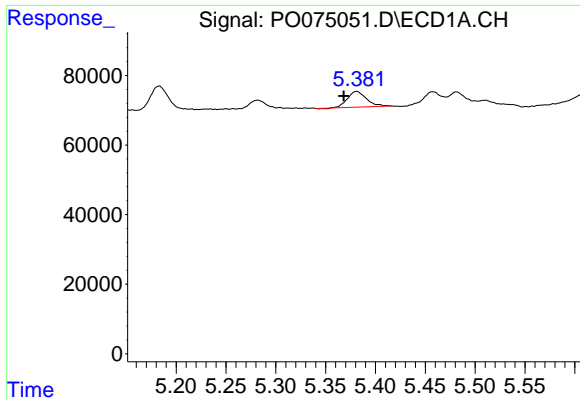
R.T.: 5.381 min  
 Delta R.T.: 0.013 min  
 Response: 59390  
 Conc: 21.08 ng/ml



#10 AR-1221-3

R.T.: 0.000 min  
 Exp R.T.: 4.449 min  
 Response: 0  
 Conc: N.D.

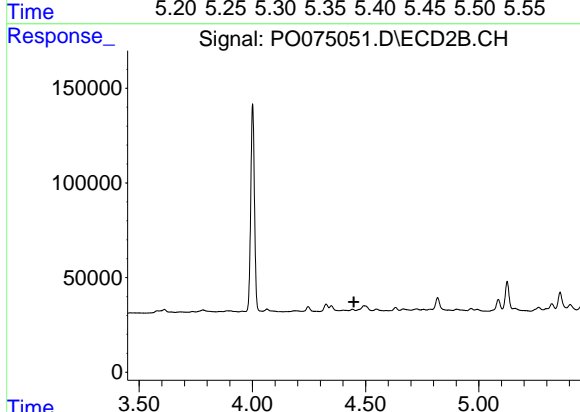




#11 AR-1232-1

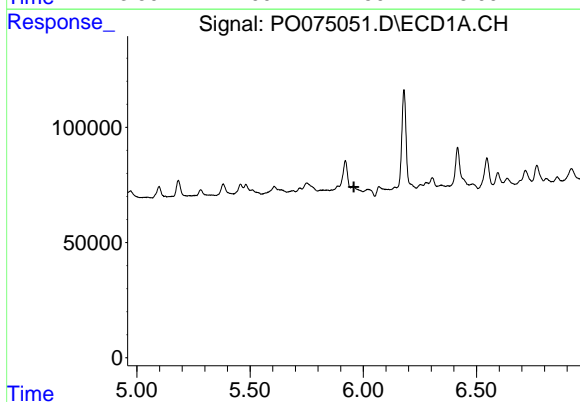
R.T.: 5.381 min  
 Delta R.T.: 0.013 min  
 Response: 59390  
 Conc: 25.93 ng/ml

Instrument :  
 ECD\_O  
 ClientSampled :



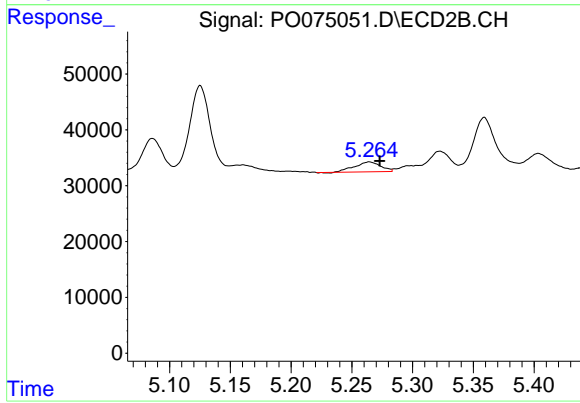
#11 AR-1232-1

R.T.: 0.000 min  
 Exp R.T. : 4.448 min  
 Response: 0  
 Conc: N.D.



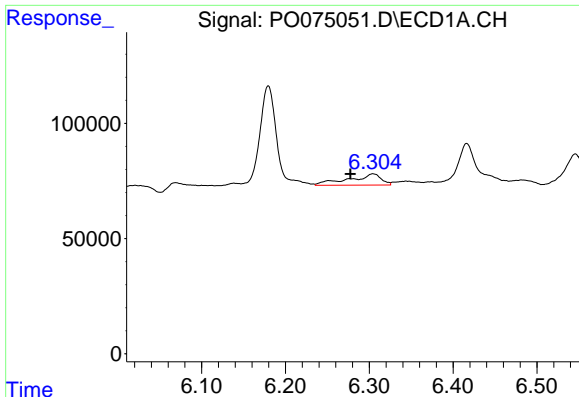
#12 AR-1232-2

R.T.: 0.000 min  
 Exp R.T. : 5.958 min  
 Response: 0  
 Conc: N.D.



#12 AR-1232-2

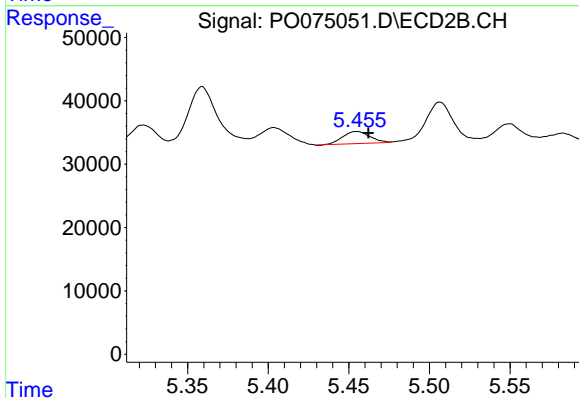
R.T.: 5.264 min  
 Delta R.T.: -0.008 min  
 Response: 26393  
 Conc: 19.55 ng/ml



#13 AR-1232-3

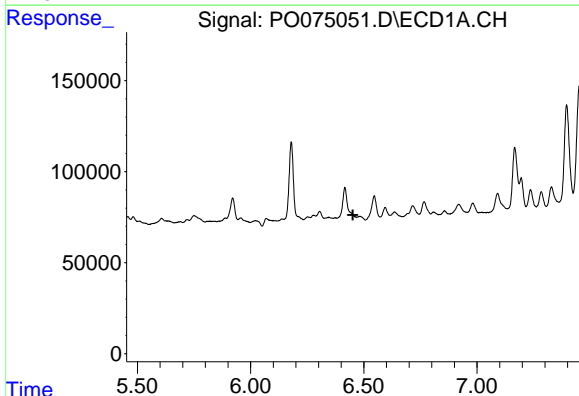
R.T.: 6.304 min  
 Delta R.T.: 0.027 min  
 Response: 131460  
 Conc: 54.48 ng/ml

Instrument :  
 ECD\_O  
 ClientSampleId :



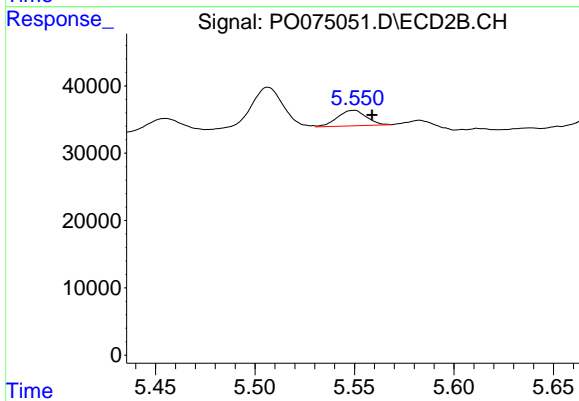
#13 AR-1232-3

R.T.: 5.455 min  
 Delta R.T.: -0.007 min  
 Response: 22458  
 Conc: 30.61 ng/ml



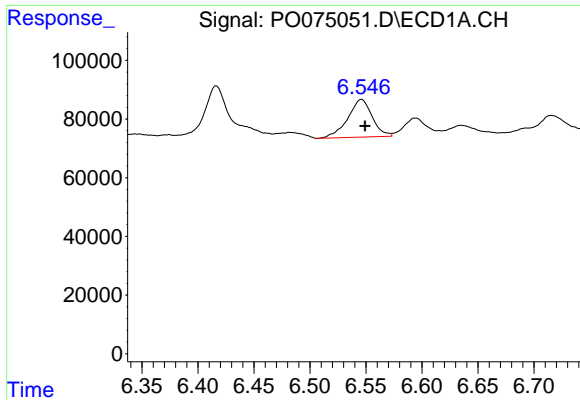
#14 AR-1232-4

R.T.: 0.000 min  
 Exp R.T. : 6.451 min  
 Response: 0  
 Conc: N.D.



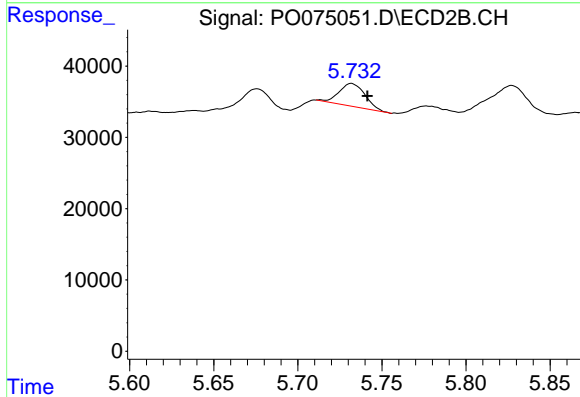
#14 AR-1232-4

R.T.: 5.550 min  
 Delta R.T.: -0.009 min  
 Response: 23562  
 Conc: 37.05 ng/ml

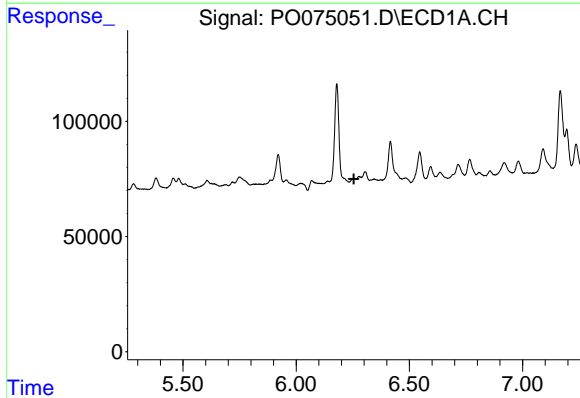


#15 AR-1232-5  
 R.T.: 6.546 min  
 Delta R.T.: -0.003 min  
 Response: 194433  
 Conc: 238.96 ng/ml

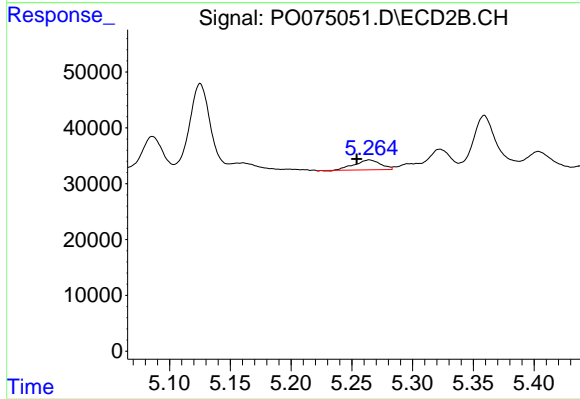
Instrument :  
 ECD\_O  
 ClientSampleId :



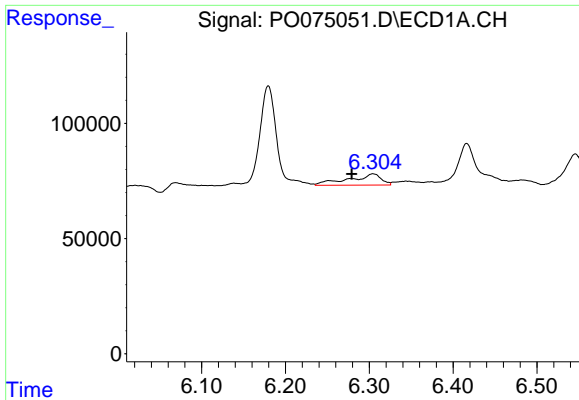
#15 AR-1232-5  
 R.T.: 5.732 min  
 Delta R.T.: -0.009 min  
 Response: 34614  
 Conc: 49.85 ng/ml



#16 AR-1242-1  
 R.T.: 0.000 min  
 Exp R.T. : 6.255 min  
 Response: 0  
 Conc: N.D.



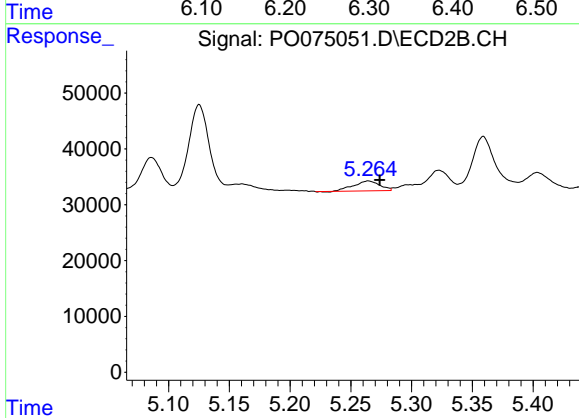
#16 AR-1242-1  
 R.T.: 5.264 min  
 Delta R.T.: 0.010 min  
 Response: 26393  
 Conc: 14.32 ng/ml



#17 AR-1242-2

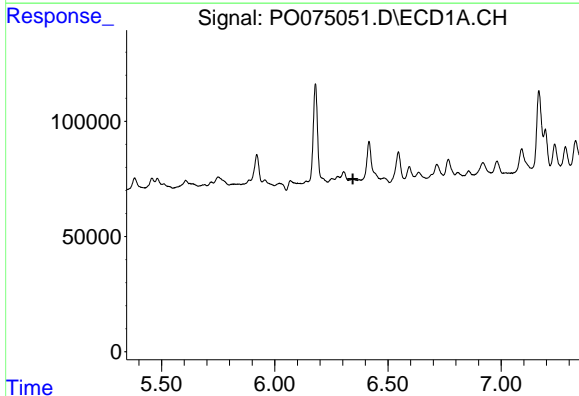
R.T.: 6.304 min  
 Delta R.T.: 0.025 min  
 Response: 131460  
 Conc: 29.13 ng/ml

Instrument :  
 ECD\_O  
 ClientSampleId :



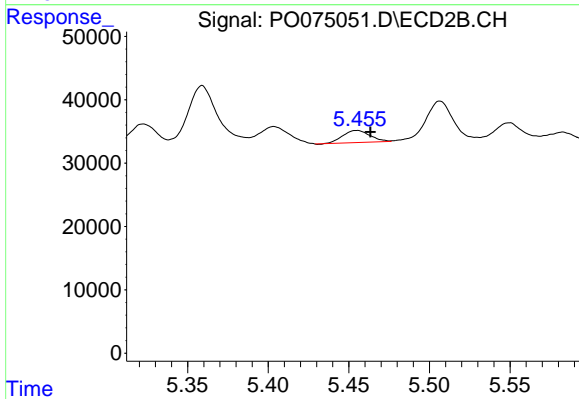
#17 AR-1242-2

R.T.: 5.264 min  
 Delta R.T.: -0.009 min  
 Response: 26393  
 Conc: 10.48 ng/ml



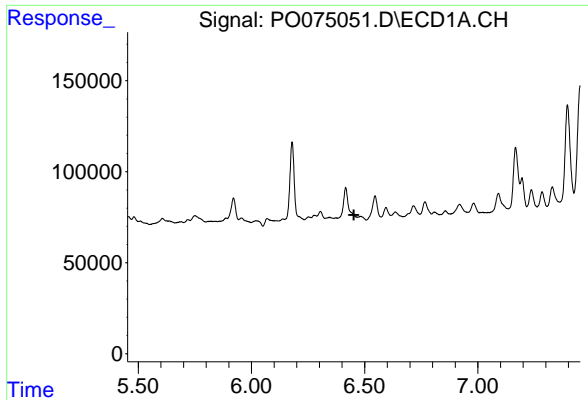
#18 AR-1242-3

R.T.: 0.000 min  
 Exp R.T. : 6.345 min  
 Response: 0  
 Conc: N.D.



#18 AR-1242-3

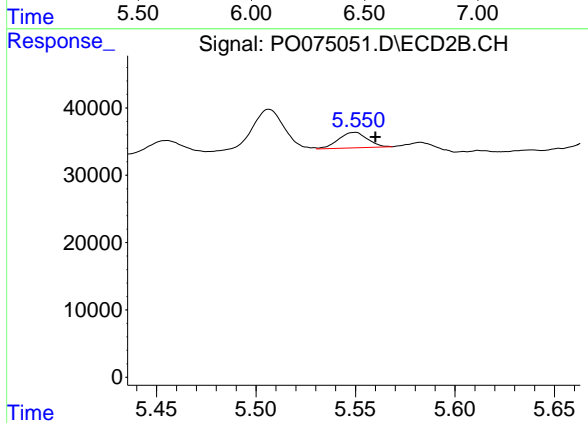
R.T.: 5.455 min  
 Delta R.T.: -0.008 min  
 Response: 22458  
 Conc: 16.54 ng/ml



#19 AR-1242-4

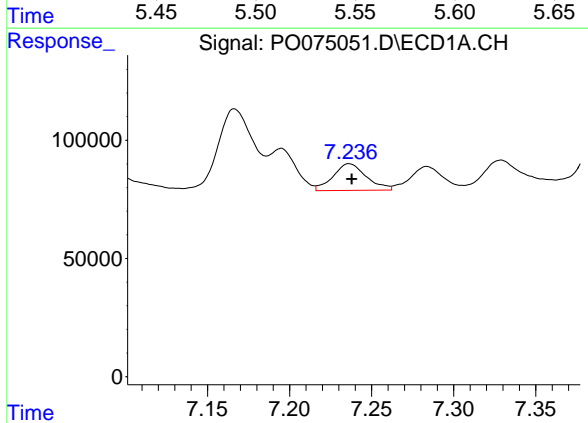
R.T.: 0.000 min  
 Exp R.T.: 6.453 min  
 Response: 0  
 Conc: N.D.

Instrument :  
 ECD\_O  
 ClientSampled :



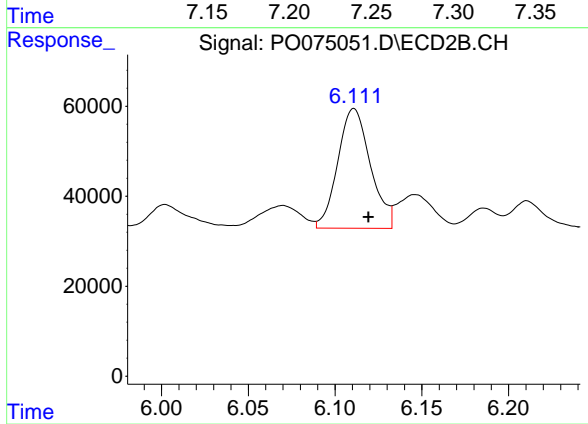
#19 AR-1242-4

R.T.: 5.550 min  
 Delta R.T.: -0.010 min  
 Response: 23562  
 Conc: 18.03 ng/ml



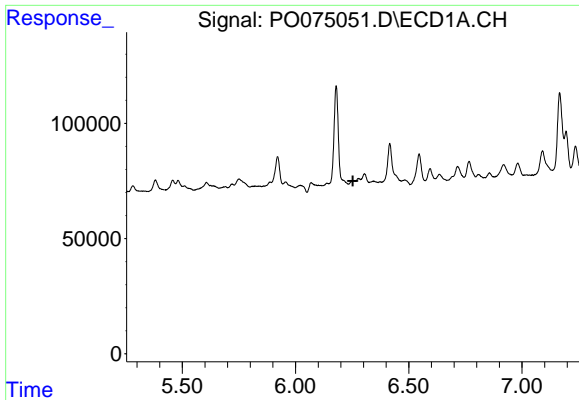
#20 AR-1242-5

R.T.: 7.236 min  
 Delta R.T.: -0.001 min  
 Response: 159007  
 Conc: 63.19 ng/ml



#20 AR-1242-5

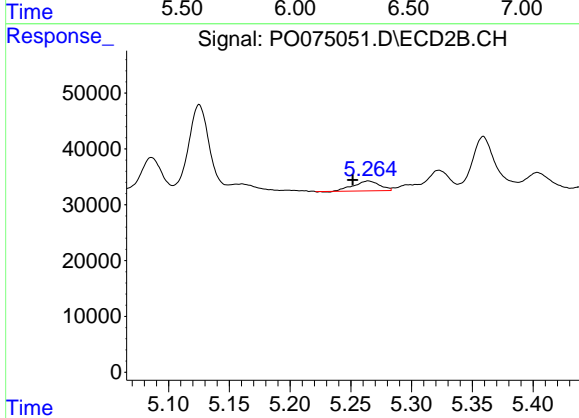
R.T.: 6.111 min  
 Delta R.T.: -0.008 min  
 Response: 349648  
 Conc: 199.70 ng/ml



#21 AR-1248-1

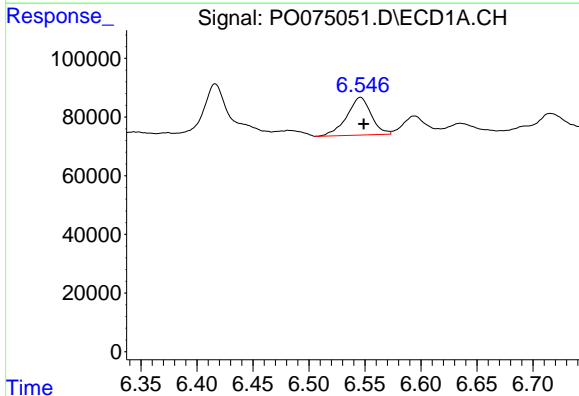
R.T.: 0.000 min  
 Exp R.T.: 6.253 min  
 Response: 0  
 Conc: N.D.

Instrument :  
 ECD\_O  
 ClientSampled :



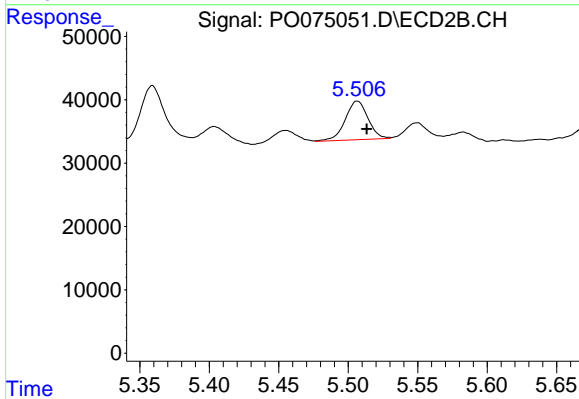
#21 AR-1248-1

R.T.: 5.264 min  
 Delta R.T.: 0.013 min  
 Response: 26393  
 Conc: 19.19 ng/ml



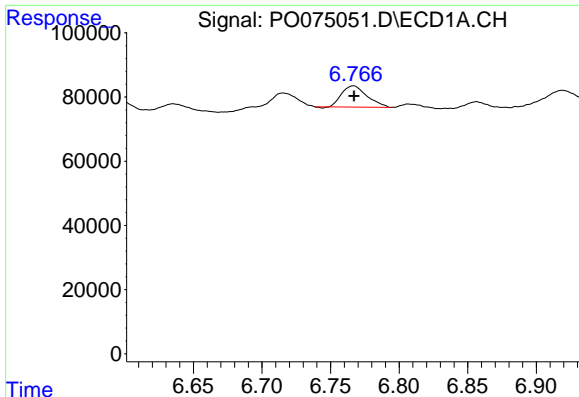
#22 AR-1248-2

R.T.: 6.546 min  
 Delta R.T.: -0.003 min  
 Response: 194433  
 Conc: 62.52 ng/ml



#22 AR-1248-2

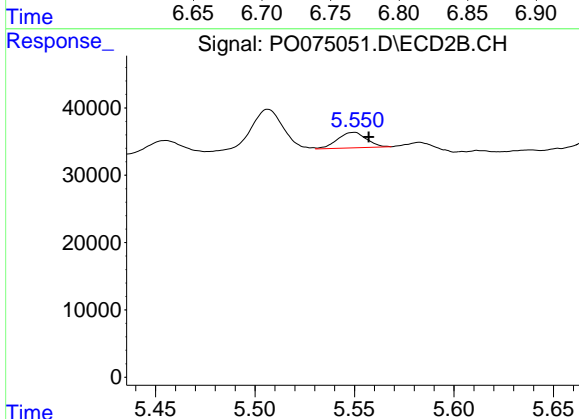
R.T.: 5.507 min  
 Delta R.T.: -0.007 min  
 Response: 69812  
 Conc: 37.15 ng/ml



#23 AR-1248-3

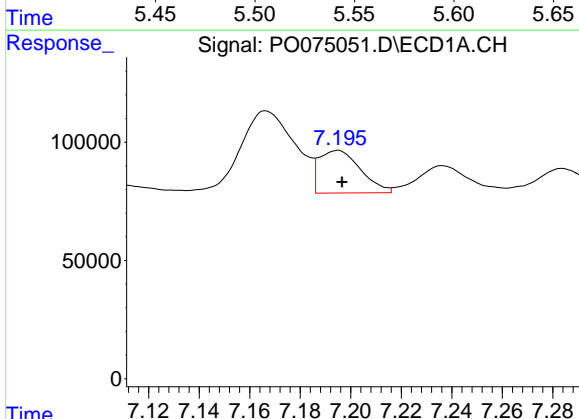
R.T.: 6.767 min  
 Delta R.T.: 0.000 min  
 Response: 84798  
 Conc: 23.42 ng/ml

Instrument :  
 ECD\_O  
 ClientSampleId :



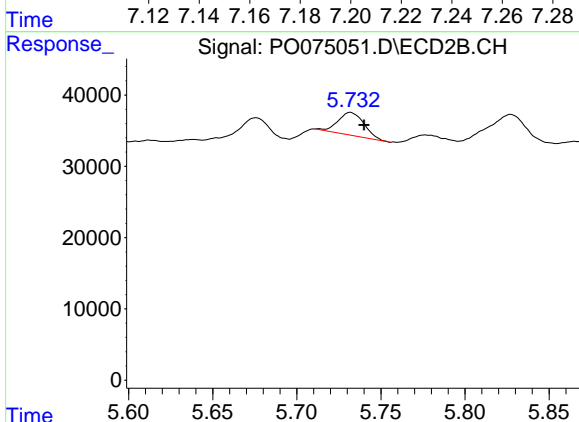
#23 AR-1248-3

R.T.: 5.550 min  
 Delta R.T.: -0.008 min  
 Response: 23562  
 Conc: 12.48 ng/ml



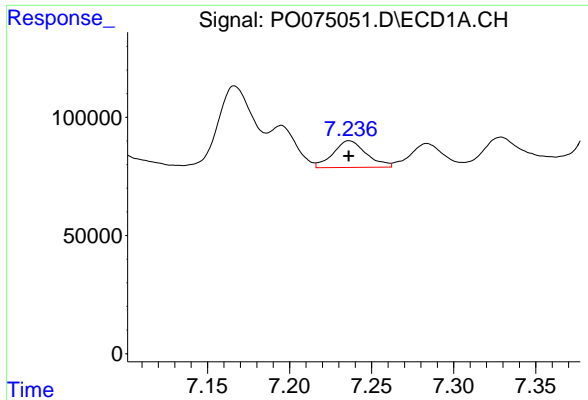
#24 AR-1248-4

R.T.: 7.195 min  
 Delta R.T.: -0.002 min  
 Response: 204496  
 Conc: 45.86 ng/ml



#24 AR-1248-4

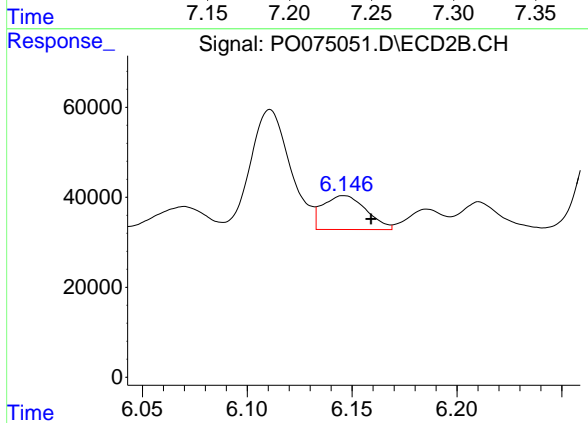
R.T.: 5.732 min  
 Delta R.T.: -0.008 min  
 Response: 34614  
 Conc: 15.37 ng/ml



#25 AR-1248-5

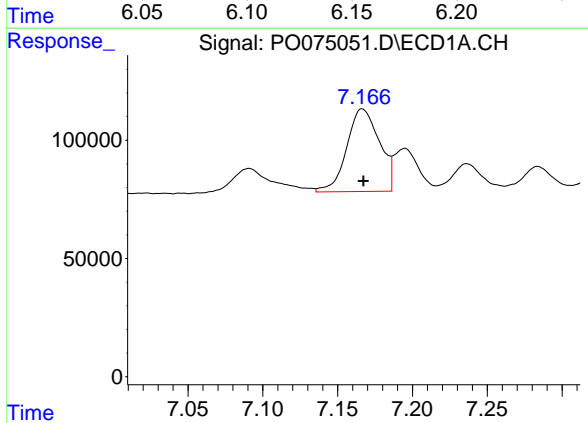
R.T.: 7.236 min  
 Delta R.T.: 0.000 min  
 Response: 159007  
 Conc: 37.73 ng/ml

Instrument :  
 ECD\_O  
 ClientSampleId :



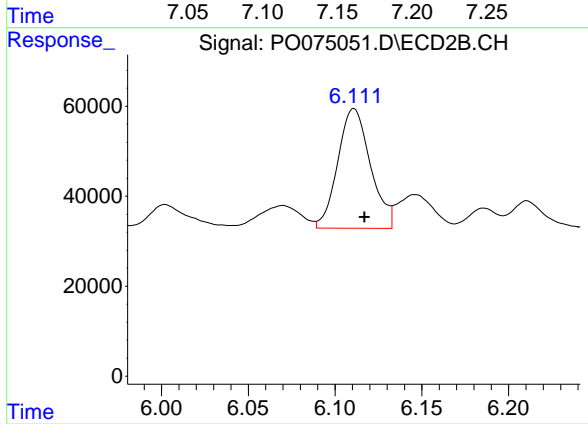
#25 AR-1248-5

R.T.: 6.146 min  
 Delta R.T.: -0.013 min  
 Response: 108490  
 Conc: 46.15 ng/ml



#26 AR-1254-1

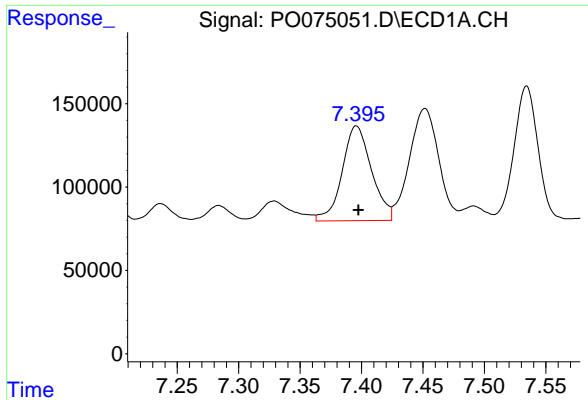
R.T.: 7.166 min  
 Delta R.T.: 0.000 min  
 Response: 530342  
 Conc: 120.58 ng/ml



#26 AR-1254-1

R.T.: 6.111 min  
 Delta R.T.: -0.006 min  
 Response: 349648  
 Conc: 96.80 ng/ml

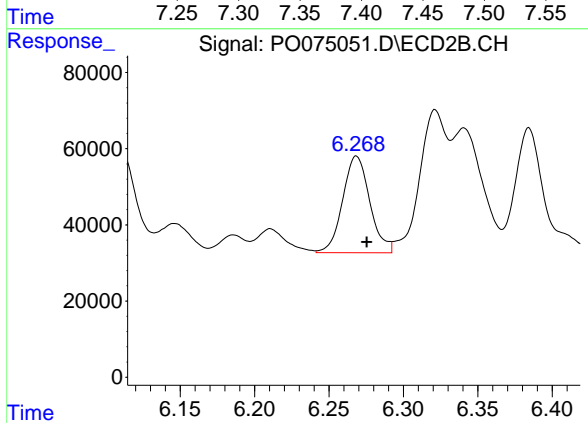




#27 AR-1254-2

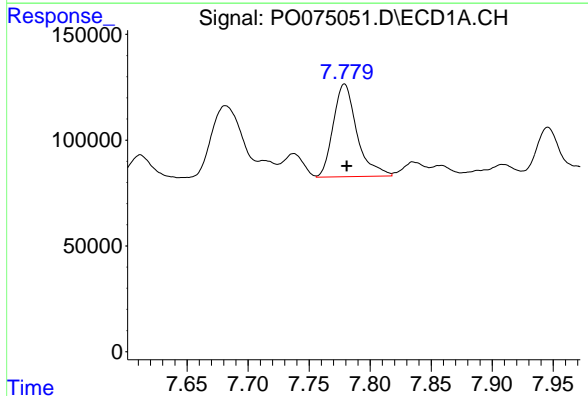
R.T.: 7.396 min  
 Delta R.T.: -0.002 min  
 Response: 946495  
 Conc: 138.97 ng/ml

Instrument :  
 ECD\_O  
 ClientSampleId :



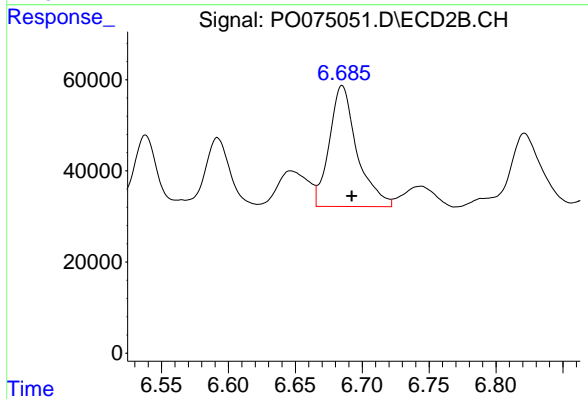
#27 AR-1254-2

R.T.: 6.268 min  
 Delta R.T.: -0.007 min  
 Response: 322336  
 Conc: 103.43 ng/ml



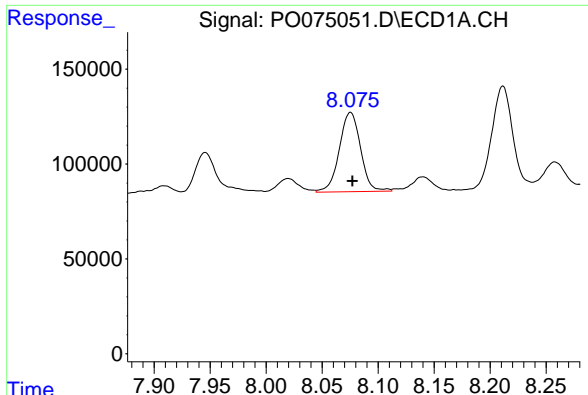
#28 AR-1254-3

R.T.: 7.779 min  
 Delta R.T.: -0.002 min  
 Response: 592218  
 Conc: 84.43 ng/ml



#28 AR-1254-3

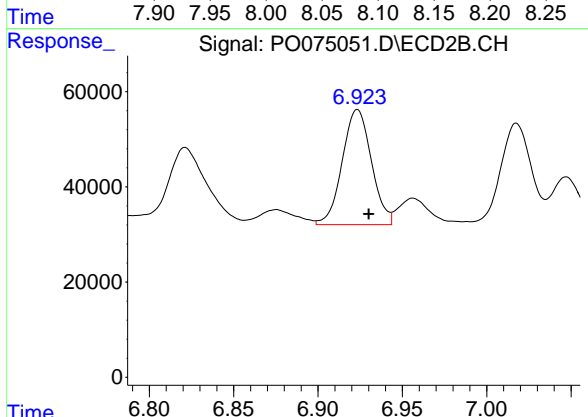
R.T.: 6.685 min  
 Delta R.T.: -0.007 min  
 Response: 381369  
 Conc: 77.77 ng/ml



#29 AR-1254-4

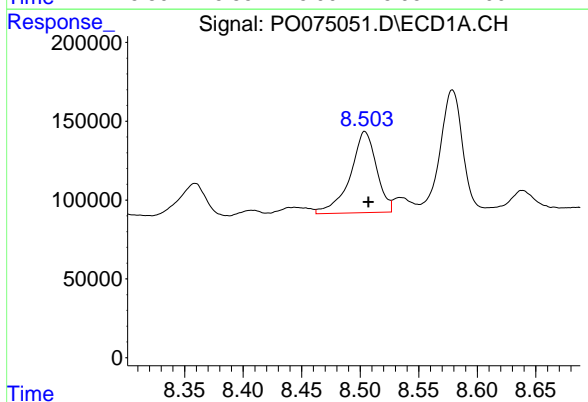
R.T.: 8.075 min  
 Delta R.T.: -0.002 min  
 Response: 553136  
 Conc: 91.21 ng/ml

Instrument :  
 ECD\_O  
 ClientSampleId :



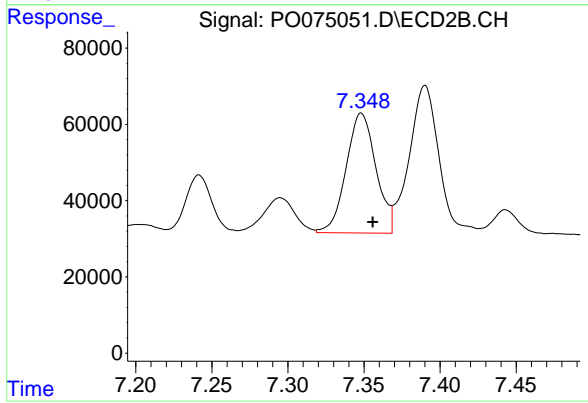
#29 AR-1254-4

R.T.: 6.923 min  
 Delta R.T.: -0.007 min  
 Response: 290934  
 Conc: 83.90 ng/ml



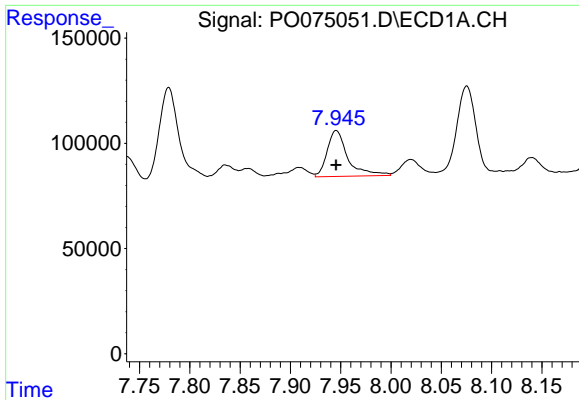
#30 AR-1254-5

R.T.: 8.504 min  
 Delta R.T.: -0.003 min  
 Response: 807205  
 Conc: 138.96 ng/ml



#30 AR-1254-5

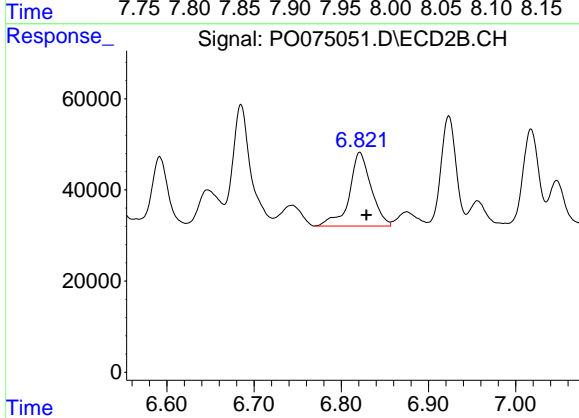
R.T.: 7.348 min  
 Delta R.T.: -0.008 min  
 Response: 428686  
 Conc: 94.72 ng/ml



#31 AR-1260-1

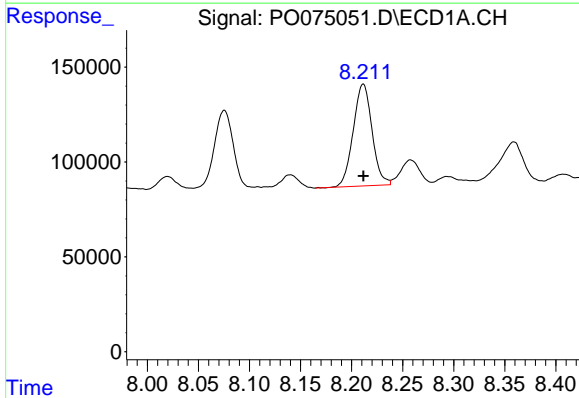
R.T.: 7.946 min  
 Delta R.T.: 0.000 min  
 Response: 313348  
 Conc: 62.81 ng/ml

Instrument :  
 ECD\_O  
 ClientSampleId :



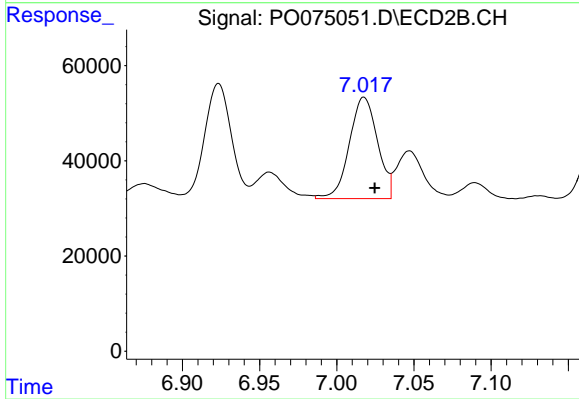
#31 AR-1260-1

R.T.: 6.821 min  
 Delta R.T.: -0.008 min  
 Response: 280723  
 Conc: 87.99 ng/ml



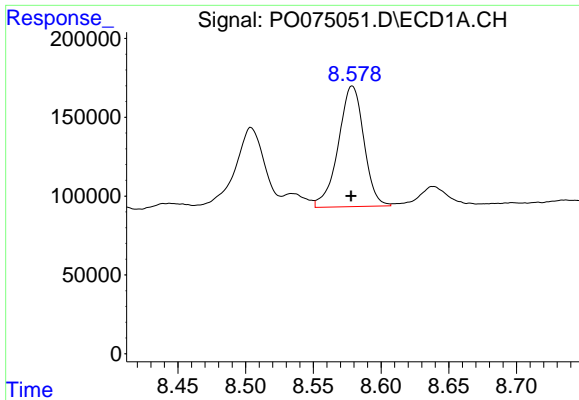
#32 AR-1260-2

R.T.: 8.211 min  
 Delta R.T.: 0.000 min  
 Response: 688914  
 Conc: 101.28 ng/ml



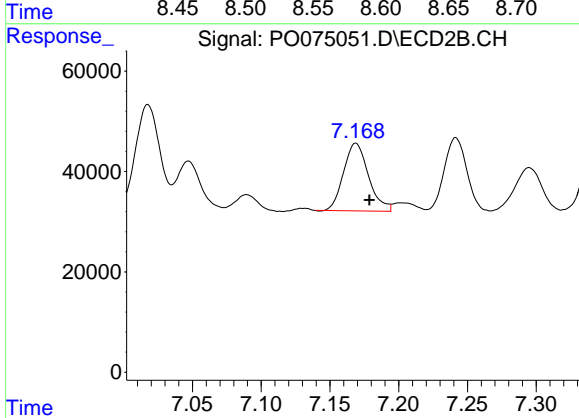
#32 AR-1260-2

R.T.: 7.018 min  
 Delta R.T.: -0.007 min  
 Response: 270988  
 Conc: 63.75 ng/ml

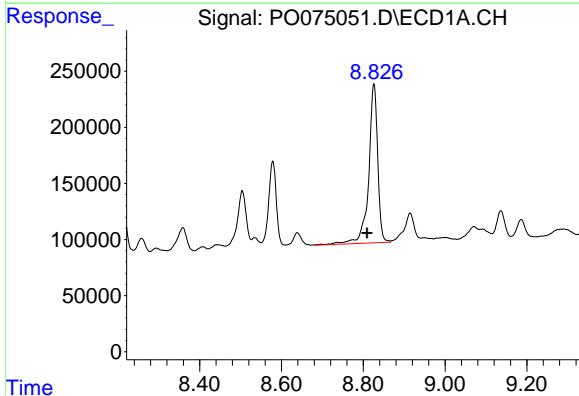


#33 AR-1260-3  
 R.T.: 8.579 min  
 Delta R.T.: 0.000 min  
 Response: 1005125  
 Conc: 175.36 ng/ml

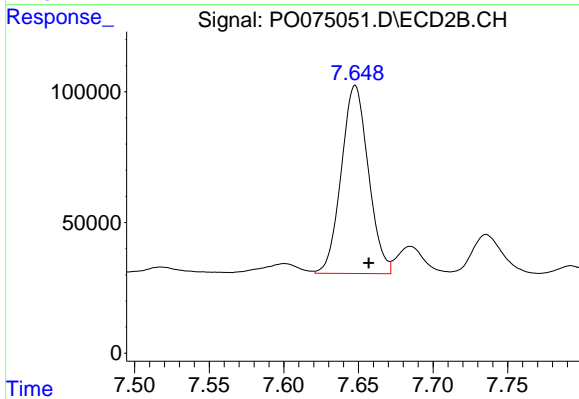
Instrument :  
 ECD\_O  
 ClientSampleId :



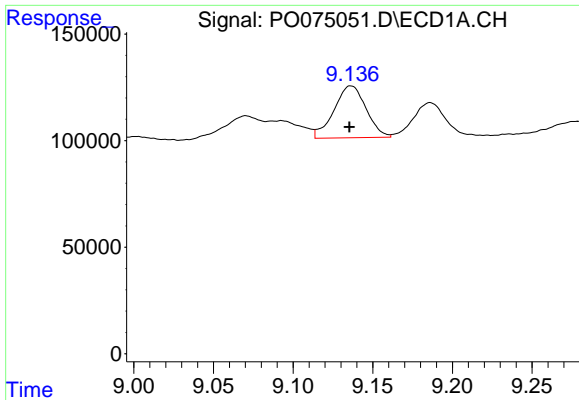
#33 AR-1260-3  
 R.T.: 7.169 min  
 Delta R.T.: -0.010 min  
 Response: 170399  
 Conc: 47.29 ng/ml



#34 AR-1260-4  
 R.T.: 8.826 min  
 Delta R.T.: 0.017 min  
 Response: 2185088  
 Conc: 399.37 ng/ml

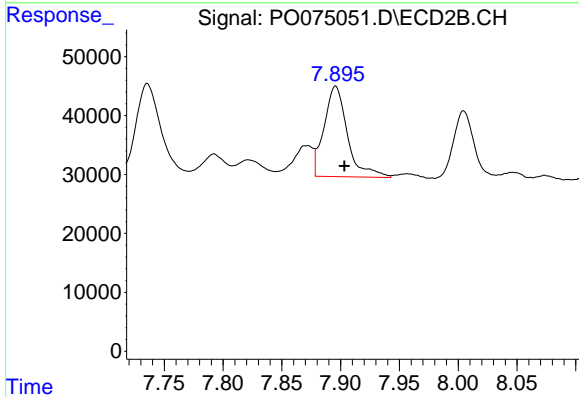


#34 AR-1260-4  
 R.T.: 7.648 min  
 Delta R.T.: -0.009 min  
 Response: 908234  
 Conc: 290.05 ng/ml

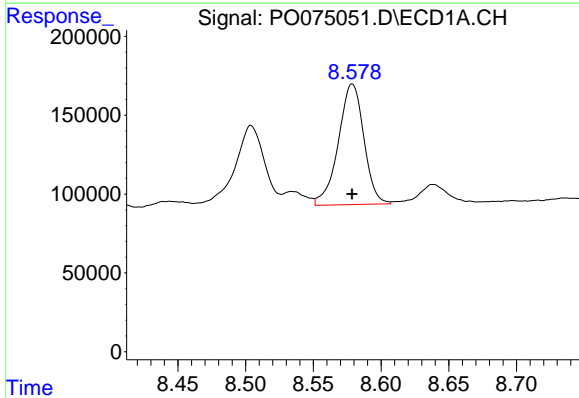


#35 AR-1260-5  
 R.T.: 9.136 min  
 Delta R.T.: 0.000 min  
 Response: 341262  
 Conc: 27.31 ng/ml

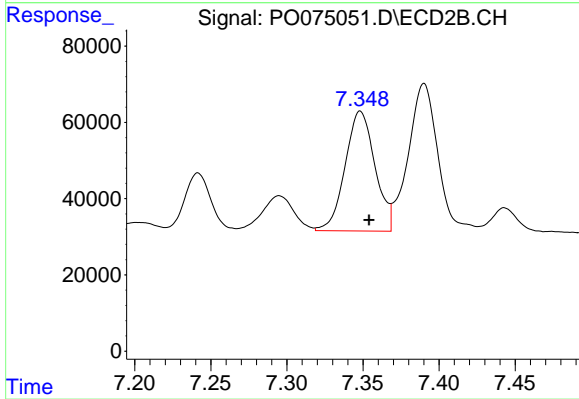
Instrument :  
 ECD\_O  
 ClientSampleId :



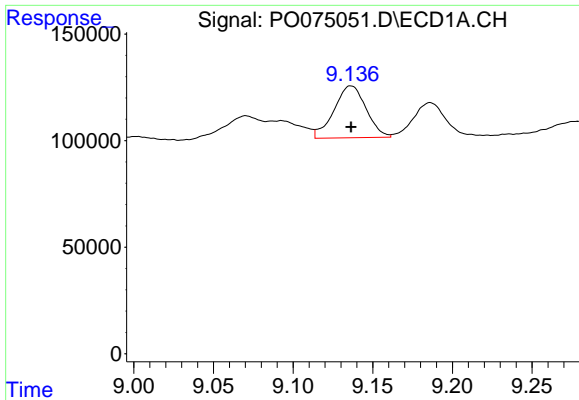
#35 AR-1260-5  
 R.T.: 7.896 min  
 Delta R.T.: -0.008 min  
 Response: 212750  
 Conc: 26.77 ng/ml



#36 AR-1262-1  
 R.T.: 8.579 min  
 Delta R.T.: 0.000 min  
 Response: 1005125  
 Conc: 112.88 ng/ml

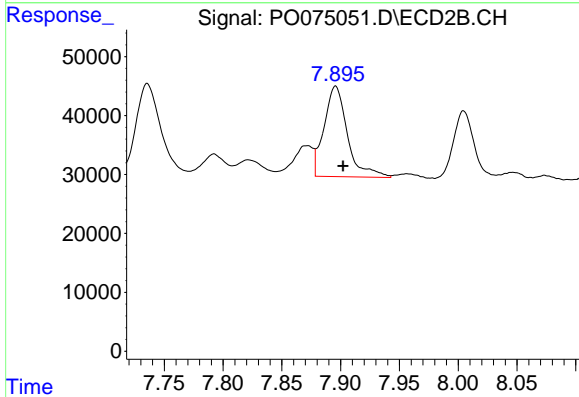


#36 AR-1262-1  
 R.T.: 7.348 min  
 Delta R.T.: -0.006 min  
 Response: 428686  
 Conc: 168.47 ng/ml

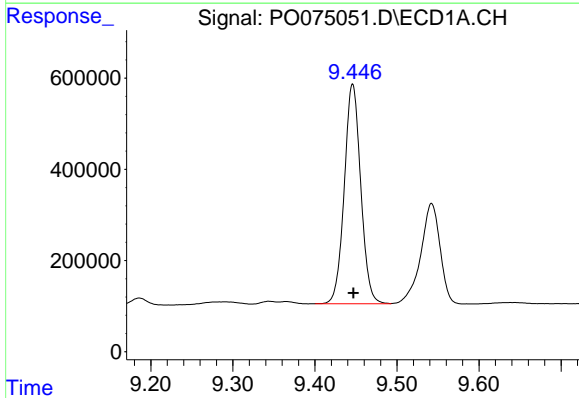


#37 AR-1262-2  
 R.T.: 9.136 min  
 Delta R.T.: 0.000 min  
 Response: 341262  
 Conc: 22.29 ng/ml

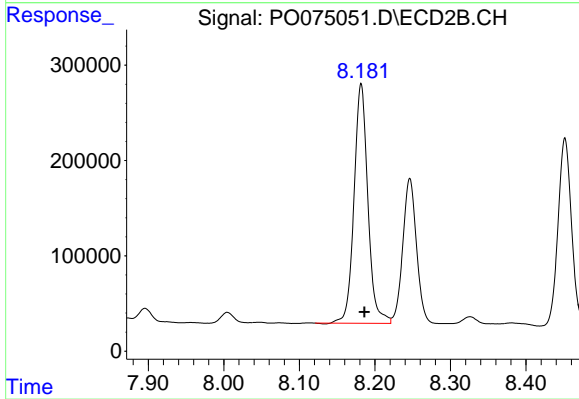
Instrument :  
 ECD\_O  
 ClientSampleId :



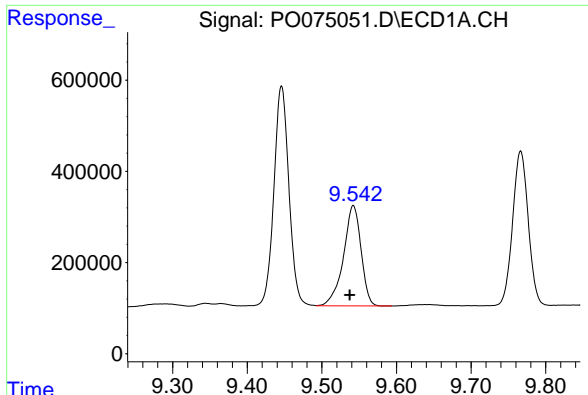
#37 AR-1262-2  
 R.T.: 7.896 min  
 Delta R.T.: -0.006 min  
 Response: 212750  
 Conc: 23.14 ng/ml



#38 AR-1262-3  
 R.T.: 9.446 min  
 Delta R.T.: 0.000 min  
 Response: 6720484  
 Conc: 670.99 ng/ml



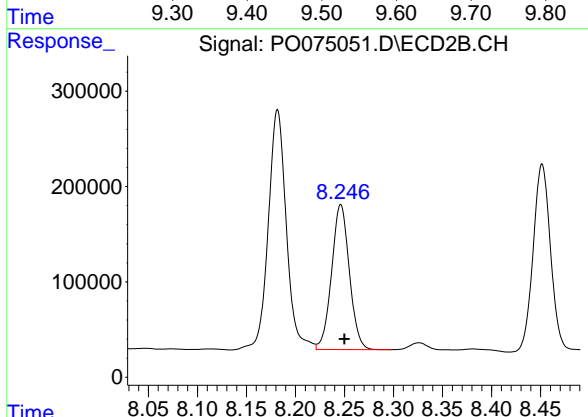
#38 AR-1262-3  
 R.T.: 8.182 min  
 Delta R.T.: -0.004 min  
 Response: 3204121  
 Conc: 810.28 ng/ml



#39 AR-1262-4

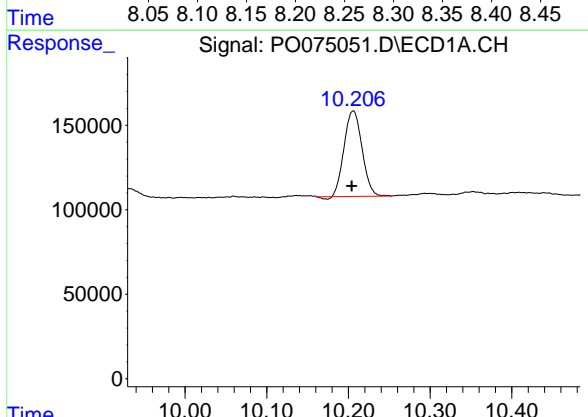
R.T.: 9.542 min  
 Delta R.T.: 0.005 min  
 Response: 3611552  
 Conc: 484.94 ng/ml

Instrument :  
 ECD\_O  
 ClientSampled :



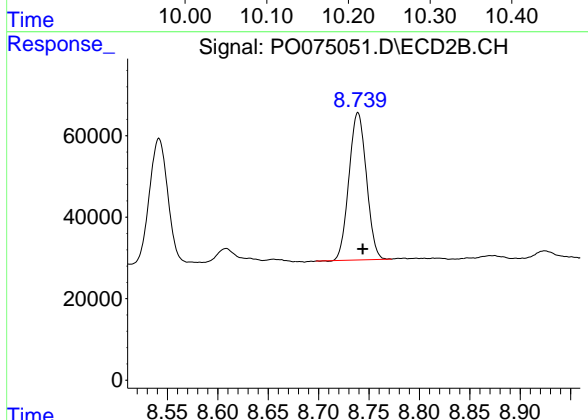
#39 AR-1262-4

R.T.: 8.246 min  
 Delta R.T.: -0.004 min  
 Response: 1919117  
 Conc: 289.67 ng/ml



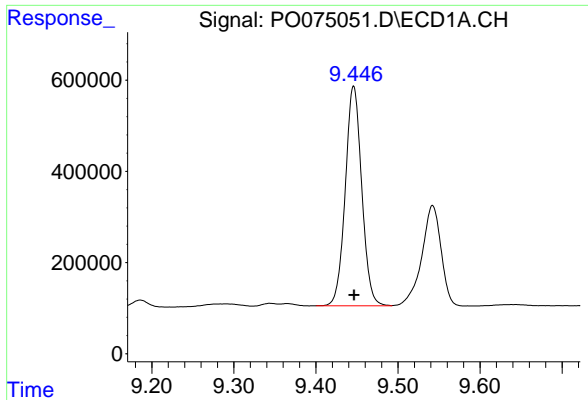
#40 AR-1262-5

R.T.: 10.206 min  
 Delta R.T.: 0.002 min  
 Response: 773747  
 Conc: 147.90 ng/ml



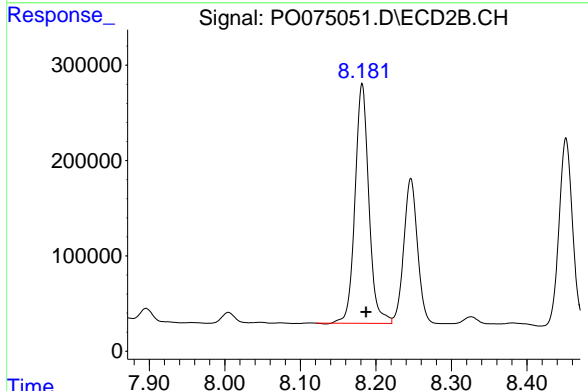
#40 AR-1262-5

R.T.: 8.739 min  
 Delta R.T.: -0.005 min  
 Response: 435465  
 Conc: 141.04 ng/ml

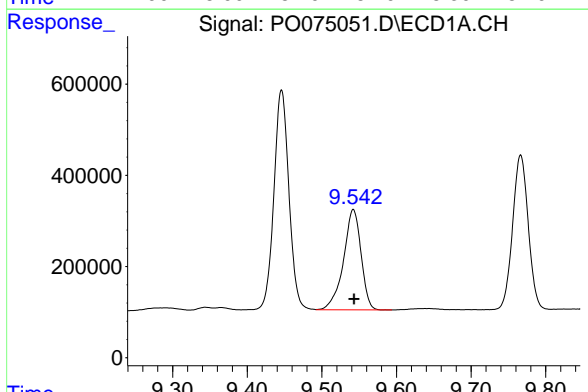


#41 AR-1268-1  
 R.T.: 9.446 min  
 Delta R.T.: 0.000 min  
 Response: 6720484  
 Conc: 359.70 ng/ml

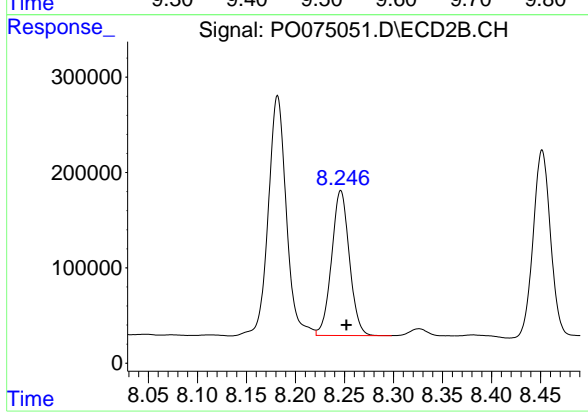
Instrument :  
 ECD\_O  
 ClientSampleId :



#41 AR-1268-1  
 R.T.: 8.182 min  
 Delta R.T.: -0.005 min  
 Response: 3204121  
 Conc: 286.22 ng/ml

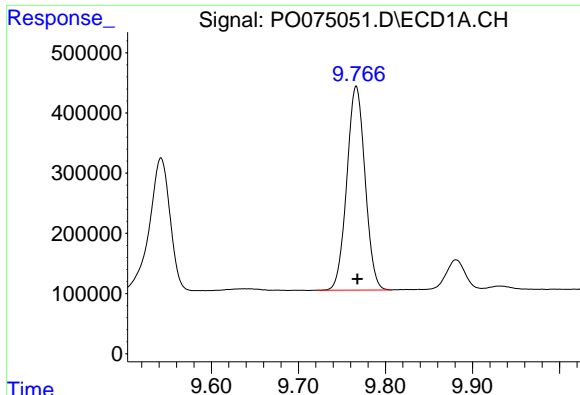


#42 AR-1268-2  
 R.T.: 9.542 min  
 Delta R.T.: -0.001 min  
 Response: 3611552  
 Conc: 226.36 ng/ml



#42 AR-1268-2  
 R.T.: 8.246 min  
 Delta R.T.: -0.006 min  
 Response: 1919117  
 Conc: 200.59 ng/ml

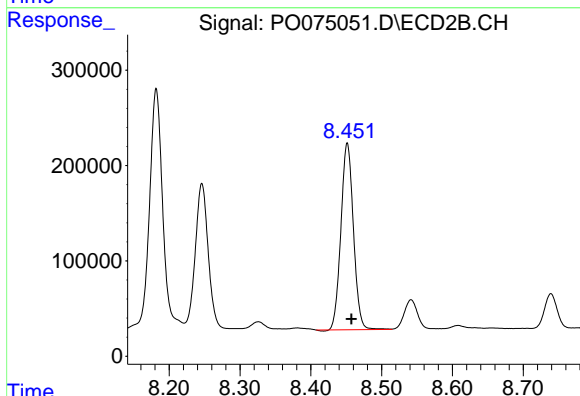




#43 AR-1268-3

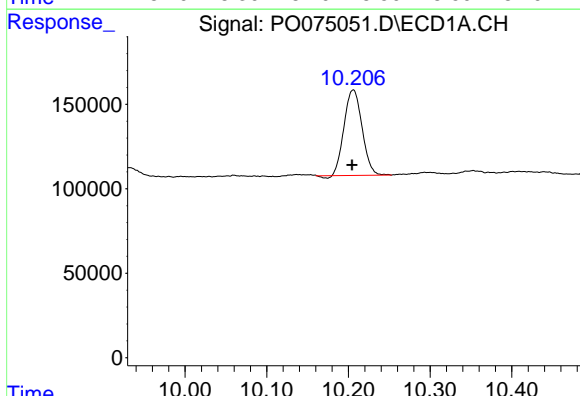
R.T.: 9.766 min  
 Delta R.T.: -0.001 min  
 Response: 4923086  
 Conc: 346.65 ng/ml

Instrument :  
 ECD\_O  
 ClientSampled :



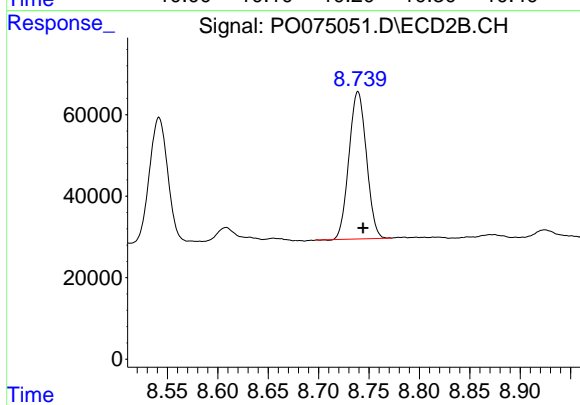
#43 AR-1268-3

R.T.: 8.452 min  
 Delta R.T.: -0.006 min  
 Response: 2399559  
 Conc: 288.80 ng/ml



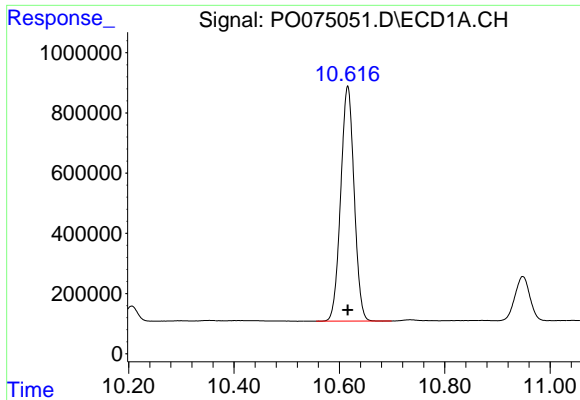
#44 AR-1268-4

R.T.: 10.206 min  
 Delta R.T.: 0.002 min  
 Response: 773747  
 Conc: 132.07 ng/ml



#44 AR-1268-4

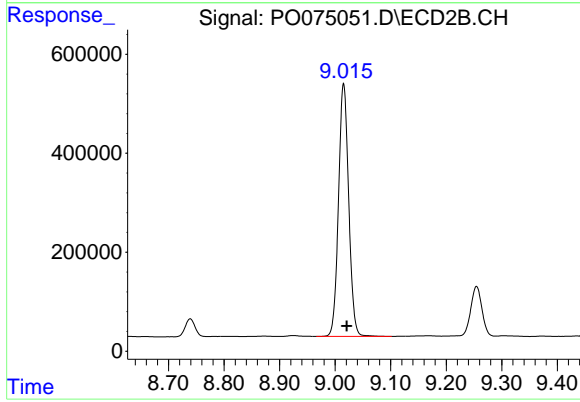
R.T.: 8.739 min  
 Delta R.T.: -0.005 min  
 Response: 435465  
 Conc: 125.53 ng/ml



#45 AR-1268-5

R.T.: 10.616 min  
Delta R.T.: 0.000 min  
Response: 13824554  
Conc: 330.82 ng/ml

Instrument :  
ECD\_O  
ClientSampleId :



#45 AR-1268-5

R.T.: 9.015 min  
Delta R.T.: -0.006 min  
Response: 6512045  
Conc: 275.02 ng/ml