

Data Path : Z:\pestpcbsrv\HPCHEM1\ECD_0\Data\P0012121\
 Data File : P0075025.D
 Signal(s) : Signal #1: ECD1A.CH Signal #2: ECD2B.CH
 Acq On : 21 Jan 2021 9:27
 Operator : AJ/MA
 Sample : M1086-07DL 2X
 Misc :
 ALS Vial : 4 Sample Multiplier: 1

Instrument :
 ECD_0
 ClientSampleId :
 S3-01-DDL

Manual Integrations
 APPROVED

Ankita
 1/22/2021 12:11:33 PM

Integration File signal 1: autoint1.e
 Integration File signal 2: autoint2.e
 Quant Time: Jan 21 14:26:45 2021
 Quant Method : Z:\pestpcbsrv\HPCHEM1\ECD_0\methods\P0011121.M
 Quant Title : GC EXTRACTABLES
 QLast Update : Tue Jan 12 06:02:45 2021
 Response via : Initial Calibration
 Integrator: ChemStation 6890 Scale Mode: Small noise peaks clipped

Volume Inj. : 2 µl
 Signal #1 Phase : ZB-MR1 Signal #2 Phase: ZB-MR2
 Signal #1 Info : 30Mx0.32mmx 0.50µ Signal #2 Info : 30M x 0.32mm x 0.25µm

Compound	RT#1	RT#2	Resp#1	Resp#2	ng/ml	ng/ml

System Monitoring Compounds						
1) SA Tetrachlo...	4.927	4.000	1095636	571215	10.383m	10.155
2) SA Decachlor...	10.943	9.250	649353	436869	6.398	7.957m
Target Compounds						
26) L6 AR-1254-1	7.164	6.109	1500973	1063234	341.274	294.361
27) L6 AR-1254-2	7.394	6.268	2585964	1132981	379.687	363.538
28) L6 AR-1254-3	7.777	6.683	3201918	2103509	456.483	428.944
29) L6 AR-1254-4	8.074	6.922	2901924	1442237	478.496	415.896
30) L6 AR-1254-5	8.504	7.347	4393848	5400110	756.394	1193.146 #

(f)=RT Delta > 1/2 Window (#)=Amounts differ by > 25% (m)=manual int.

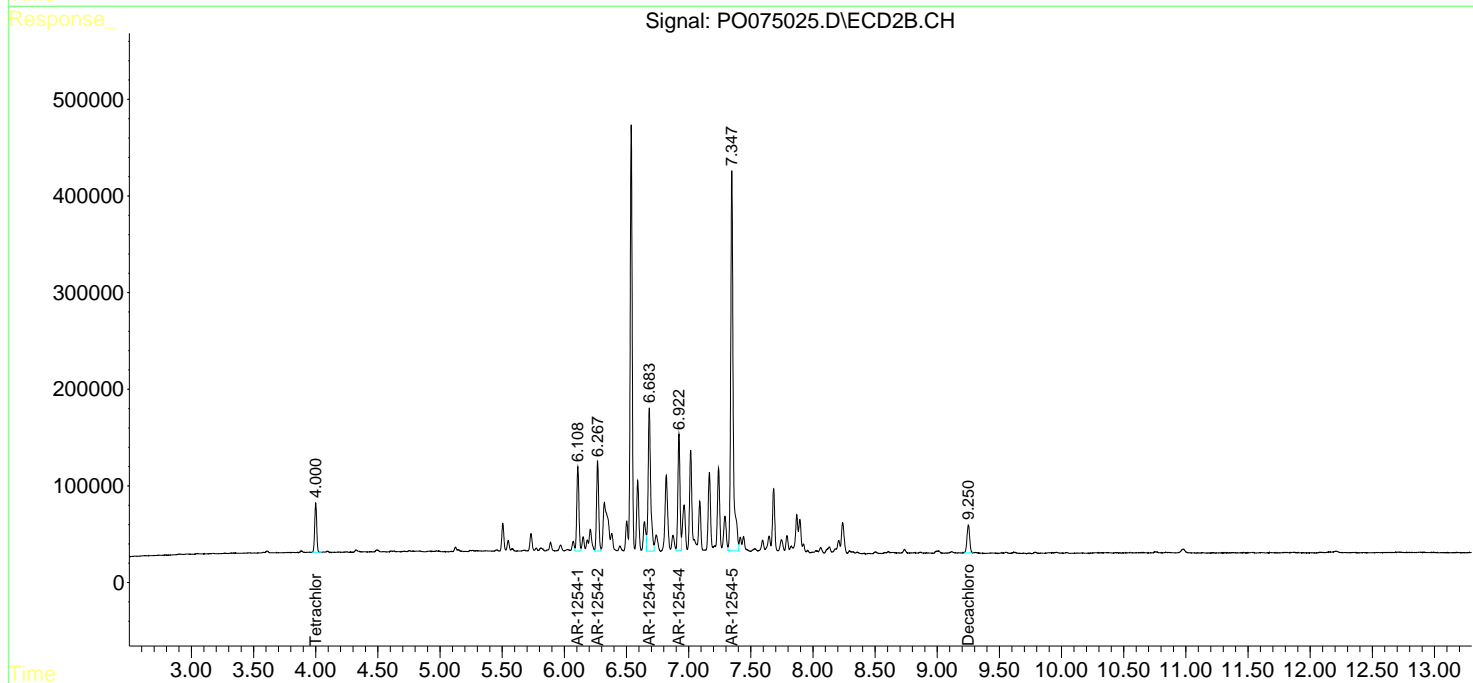
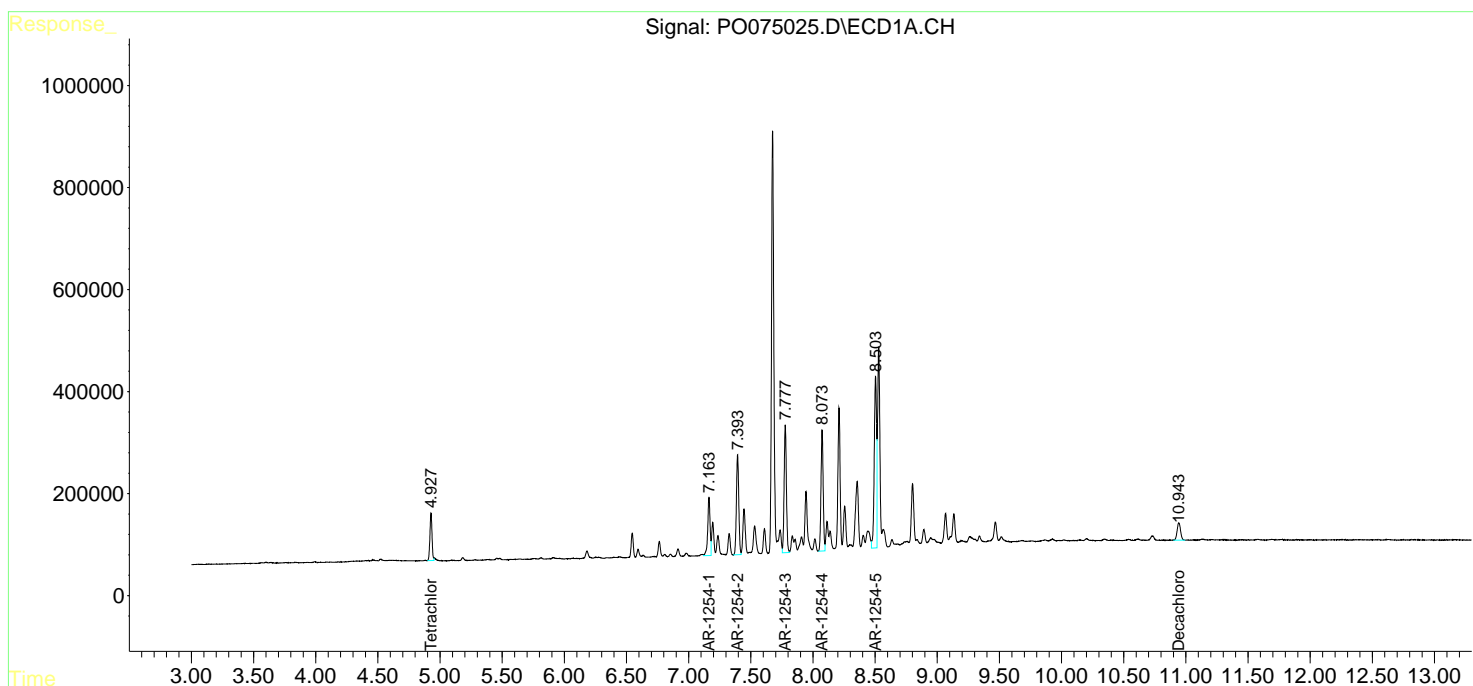
Data Path : Z:\pestpcbsrv\HPCHEM1\ECD_0\Data\P0012121\
 Data File : P0075025.D
 Signal(s) : Signal #1: ECD1A.CH Signal #2: ECD2B.CH
 Acq On : 21 Jan 2021 9:27
 Operator : AJ/MA
 Sample : M1086-07DL 2X
 Misc :
 ALS Vial : 4 Sample Multiplier: 1

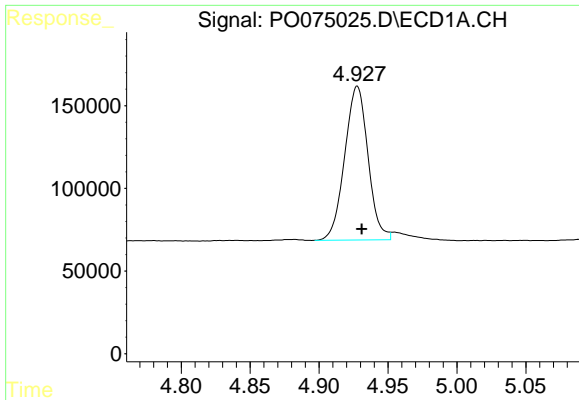
Instrument :
 ECD_O
Client Sampled :
 S3-01-DDL

Manual Integrations
APPROVED
 Ankita
 1/22/2021 12:11:33 PM

Integration File signal 1: autoint1.e
 Integration File signal 2: autoint2.e
 Quant Time: Jan 21 14:26:45 2021
 Quant Method : Z:\pestpcbsrv\HPCHEM1\ECD_0\methods\P0011121.M
 Quant Title : GC EXTRACTABLES
 QLast Update : Tue Jan 12 06:02:45 2021
 Response via : Initial Calibration
 Integrator: ChemStation 6890 Scale Mode: Small noise peaks clipped

Volume Inj. : 2 µl
 Signal #1 Phase : ZB-MR1 Signal #2 Phase: ZB-MR2
 Signal #1 Info : 30Mx0.32mmx 0.50µ Signal #2 Info : 30M x 0.32mm x 0.25µm

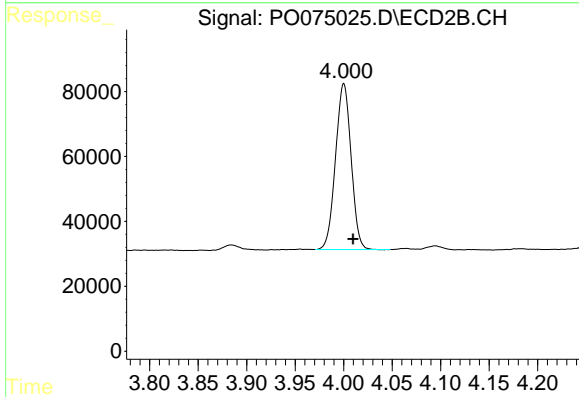




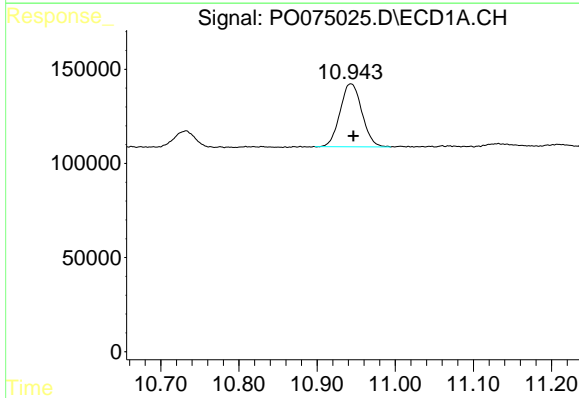
#1 Tetrachloro-m-xylene
 R.T.: 4.927 min
 Delta R.T.: -0.004 min
 Response: 1095636
 Conc: 10.38 ng/ml m

Instrument :
 ECD_O
ClientSampled :
 S3-01-DDL

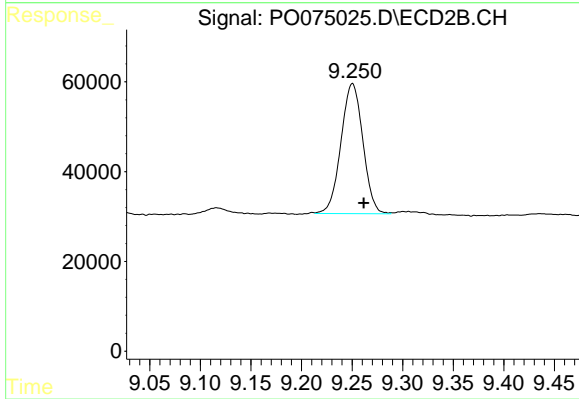
Manual Integrations
APPROVED
 Ankita
 1/22/2021 12:11:33 PM



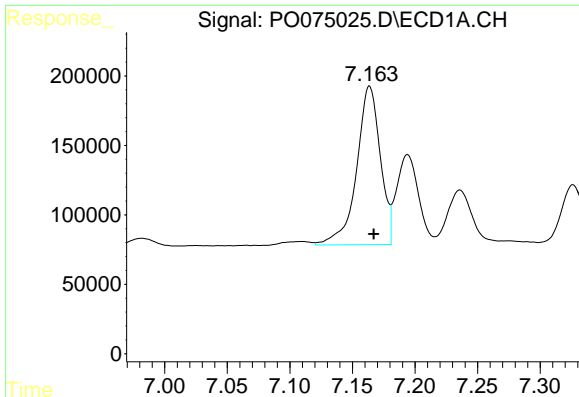
#1 Tetrachloro-m-xylene
 R.T.: 4.000 min
 Delta R.T.: -0.010 min
 Response: 571215
 Conc: 10.15 ng/ml



#2 Decachlorobiphenyl
 R.T.: 10.943 min
 Delta R.T.: -0.003 min
 Response: 649353
 Conc: 6.40 ng/ml



#2 Decachlorobiphenyl
 R.T.: 9.250 min
 Delta R.T.: -0.011 min
 Response: 436869
 Conc: 7.96 ng/ml m



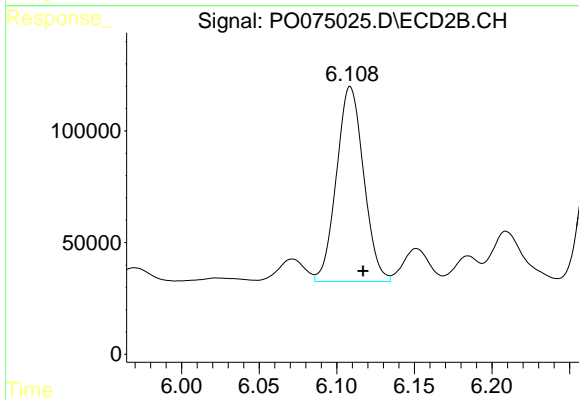
#26 AR-1254-1

R.T.: 7.164 min
 Delta R.T.: -0.003 min
 Response: 1500973
 Conc: 341.27 ng/ml

Instrument :
 ECD_O
 ClientSampled :
 S3-01-DDL

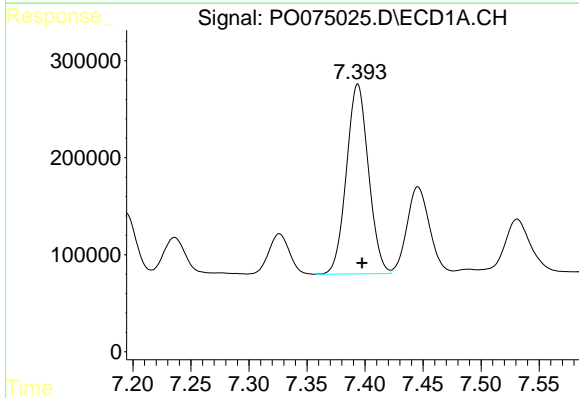
Manual Integrations
 APPROVED

Ankita
 1/22/2021 12:11:33 PM



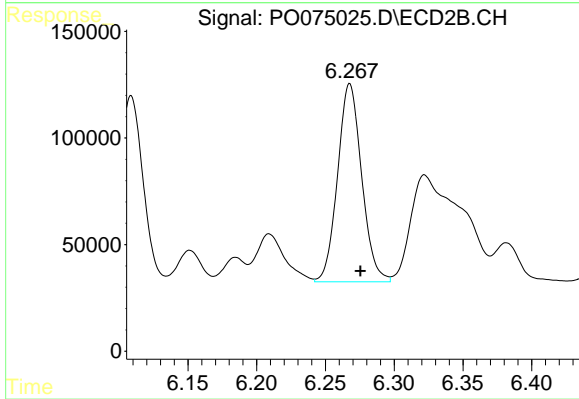
#26 AR-1254-1

R.T.: 6.109 min
 Delta R.T.: -0.008 min
 Response: 1063234
 Conc: 294.36 ng/ml



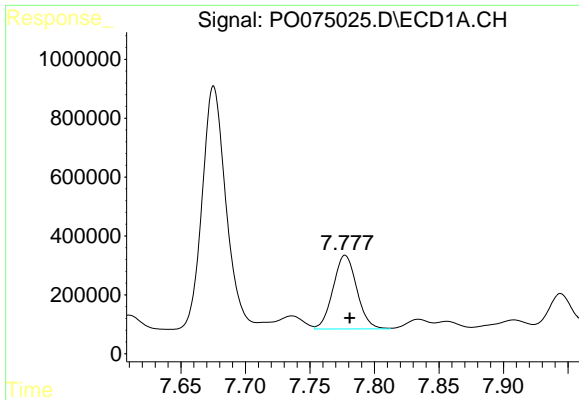
#27 AR-1254-2

R.T.: 7.394 min
 Delta R.T.: -0.004 min
 Response: 2585964
 Conc: 379.69 ng/ml



#27 AR-1254-2

R.T.: 6.268 min
 Delta R.T.: -0.008 min
 Response: 1132981
 Conc: 363.54 ng/ml

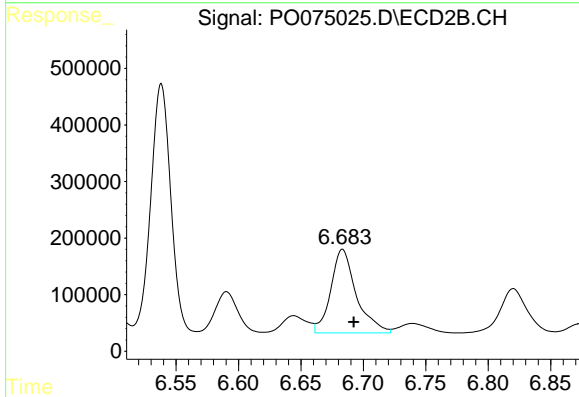


#28 AR-1254-3

R.T.: 7.777 min
 Delta R.T.: -0.004 min
 Response: 3201918
 Conc: 456.48 ng/ml

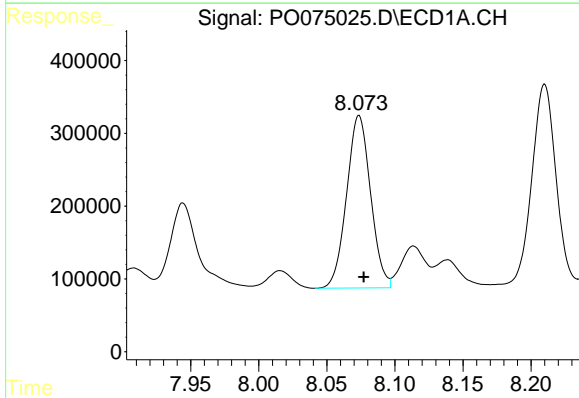
Instrument :
 ECD_O
ClientSampled :
 S3-01-DDL

Manual Integrations
APPROVED
 Ankita
 1/22/2021 12:11:33 PM



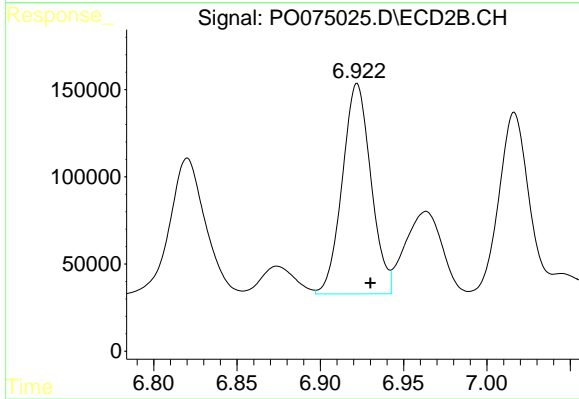
#28 AR-1254-3

R.T.: 6.683 min
 Delta R.T.: -0.009 min
 Response: 2103509
 Conc: 428.94 ng/ml



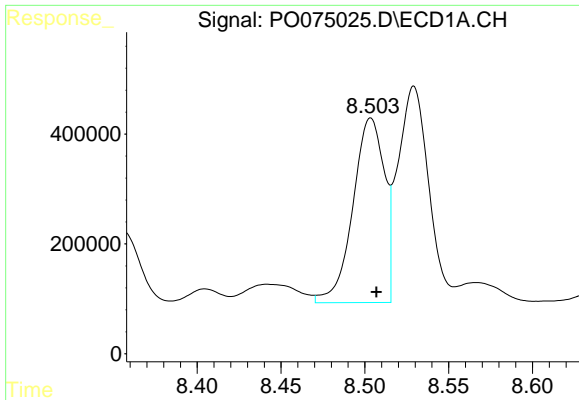
#29 AR-1254-4

R.T.: 8.074 min
 Delta R.T.: -0.003 min
 Response: 2901924
 Conc: 478.50 ng/ml



#29 AR-1254-4

R.T.: 6.922 min
 Delta R.T.: -0.008 min
 Response: 1442237
 Conc: 415.90 ng/ml



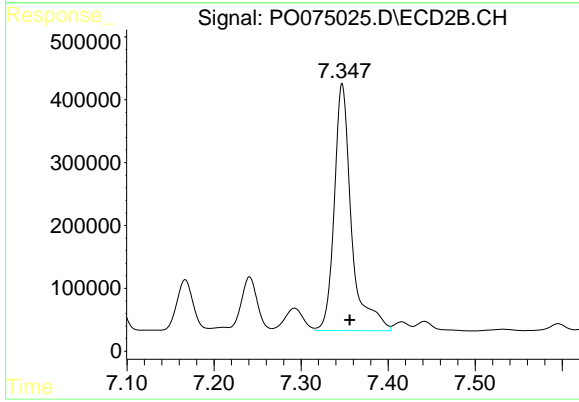
#30 AR-1254-5

R.T.: 8.504 min
Delta R.T.: -0.003 min
Response: 4393848
Conc: 756.39 ng/ml

Instrument :
ECD_O
ClientSampled :
S3-01-DDL

Manual Integrations
APPROVED

Ankita
1/22/2021 12:11:33 PM



#30 AR-1254-5

R.T.: 7.347 min
Delta R.T.: -0.009 min
Response: 5400110
Conc: 1193.15 ng/ml