

Data Path : Z:\pestpcbsrv\HPCHEM1\ECD\_P\Data\PP012122\  
 Data File : PP043175.D  
 Signal(s) : Signal #1: ECD1A.CH Signal #2: ECD2B.CH  
 Acq On : 21 Jan 2022 15:15  
 Operator : AJ\MA  
 Sample : AR1242CCC500  
 Misc :  
 ALS Vial : 4 Sample Multiplier: 1

Instrument :  
 ECD\_O  
 ClientSampleId :

Integration File signal 1: autoint1.e  
 Integration File signal 2: autoint2.e  
 Quant Time: Jan 21 23:21:32 2022  
 Quant Method : Z:\pestpcbsrv\HPCHEM1\ECD\_P\methods\PP011222.M  
 Quant Title : GC EXTRACTABLES  
 QLast Update : Thu Jan 13 19:45:07 2022  
 Response via : Initial Calibration  
 Integrator: ChemStation 6890 Scale Mode: Small noise peaks clipped

Volume Inj. : 2 µl  
 Signal #1 Phase : ZB-MR1 Signal #2 Phase: ZB-MR2  
 Signal #1 Info : 30Mx0.32mmx 0.50µ Signal #2 Info : 30M x 0.32mm x 0.25µm

Compound	RT#1	RT#2	Resp#1	Resp#2	ng/ml	ng/ml
System Monitoring Compounds						
1) SA Tetrachlo...	4.873	4.037	1106326	1159242	46.757	46.414
2) SA Decachlor...	10.793	9.365	820446	923344	56.124	47.335
Target Compounds						
3) L1 AR-1016-1	6.175	5.300	258251	361726	347.869	353.330
4) L1 AR-1016-2	6.198	5.321	395568	507469	343.992	355.333
5) L1 AR-1016-3	6.264	5.515	247668	280027	347.949	350.112
6) L1 AR-1016-4	6.369	5.565	197893	211960	326.361	341.041
7) L1 AR-1016-5	6.684	5.797	193383	262872	337.809	352.549
8) L2 AR-1221-1	5.111	4.296	39997	40198	150.244	120.384
9) L2 AR-1221-2	5.215	4.396	53134	64966	262.922	267.016
10) L2 AR-1221-3	5.298	4.486	173749	213119	264.636	271.859
11) L3 AR-1232-1	5.298	4.486	173749	213119	304.630	327.319
12) L3 AR-1232-2	5.883	5.321	212842	507469	784.718	809.209
13) L3 AR-1232-3	6.198	5.515	395568	280027	810.420	846.806
14) L3 AR-1232-4	6.369	5.610	197893	267213	828.219	905.276
15) L3 AR-1232-5	6.469	5.797	145113	262872	923.616	852.342
16) L4 AR-1242-1	6.175	5.300	258251	361726	435.891	451.377
17) L4 AR-1242-2	6.198	5.321	395568	507469	443.375	448.178
18) L4 AR-1242-3	6.264	5.515	247668	280027	446.366	439.184
19) L4 AR-1242-4	6.369	5.610	197893	267213	434.947	435.019
20) L4 AR-1242-5	7.147	6.177	193078	347562	430.439	483.016
21) L5 AR-1248-1	6.175	5.300	258251	361726	630.087	643.944
22) L5 AR-1248-2	6.469	5.565	145113	211960	257.755	261.149
23) L5 AR-1248-3	6.684	5.610	193383	267213	285.226	310.899
24) L5 AR-1248-4	7.108	5.797	183634	262872	254.584	273.902
25) L5 AR-1248-5	7.147	6.220	193078	299816	264.624	314.046
26) L6 AR-1254-1	7.079	6.177	137806	347562	175.624	224.131 #
27) L6 AR-1254-2	7.311	6.336	163121	85796	129.606	63.199 #
28) L6 AR-1254-3	7.686	6.760	64266	116098	49.534	54.278
29) L6 AR-1254-4	7.980	6.999	46927	82110	53.691	65.814
30) L6 AR-1254-5	8.410	7.430	18368	24861	19.605	14.580 #
31) L7 AR-1260-1	0.000	6.908	0	39272	N.D.	30.382 #
32) L7 AR-1260-2	8.119	7.093	18390	14103	17.806	9.029 #
33) L7 AR-1260-3	8.495	7.248	923	13159	1.224	9.105 #
34) L7 AR-1260-4	8.701f	0.000	7015	0	8.236	N.D. #
35) L7 AR-1260-5	9.018f	0.000	1344	0	0.817	N.D. #
36) L8 AR-1262-1	8.495	7.430	923	24861	0.874	27.463 #
37) L8 AR-1262-2	9.018f	0.000	1344	0	0.777	N.D. #

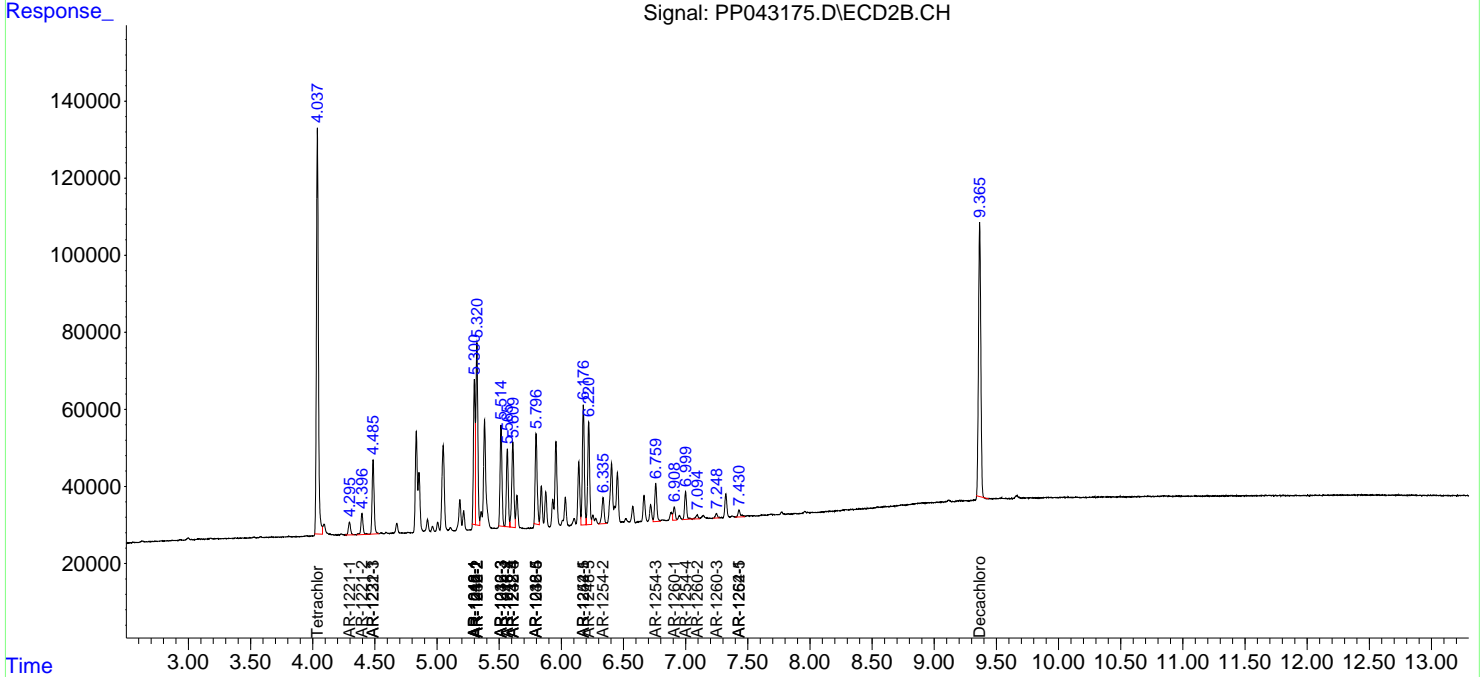
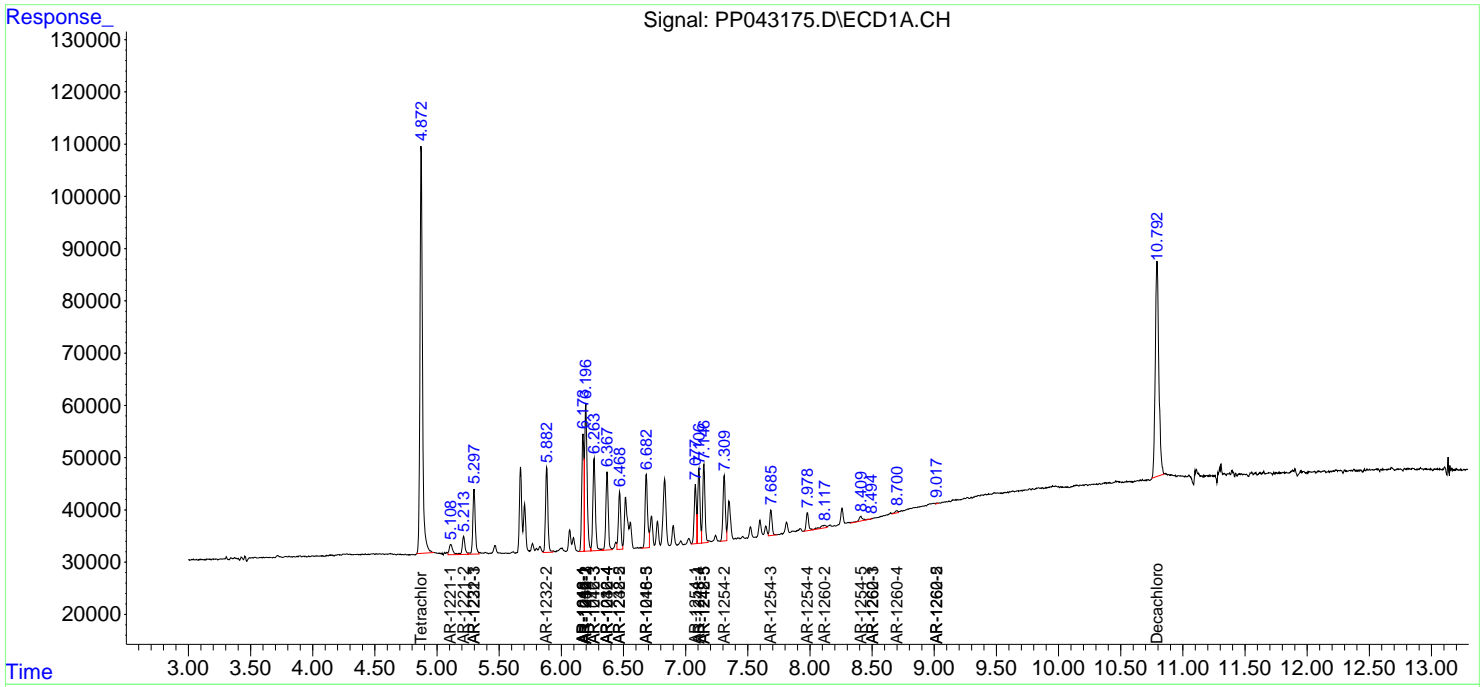
(f)=RT Delta > 1/2 Window (#)=Amounts differ by > 25% (m)=manual int.

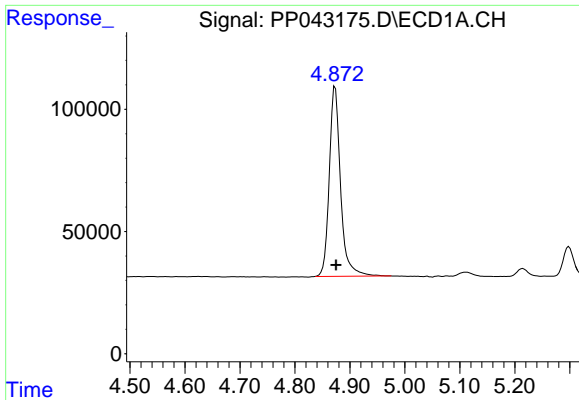
Data Path : Z:\pestpcbsrv\HPCHEM1\ECD\_P\Data\PP012122\  
 Data File : PP043175.D  
 Signal(s) : Signal #1: ECD1A.CH Signal #2: ECD2B.CH  
 Acq On : 21 Jan 2022 15:15  
 Operator : AJ\MA  
 Sample : AR1242CCC500  
 Misc :  
 ALS Vial : 4 Sample Multiplier: 1

Instrument :  
 ECD\_O  
 ClientSampleId :

Integration File signal 1: autoint1.e  
 Integration File signal 2: autoint2.e  
 Quant Time: Jan 21 23:21:32 2022  
 Quant Method : Z:\pestpcbsrv\HPCHEM1\ECD\_P\methods\PP011222.M  
 Quant Title : GC EXTRACTABLES  
 QLast Update : Thu Jan 13 19:45:07 2022  
 Response via : Initial Calibration  
 Integrator: ChemStation 6890 Scale Mode: Small noise peaks clipped

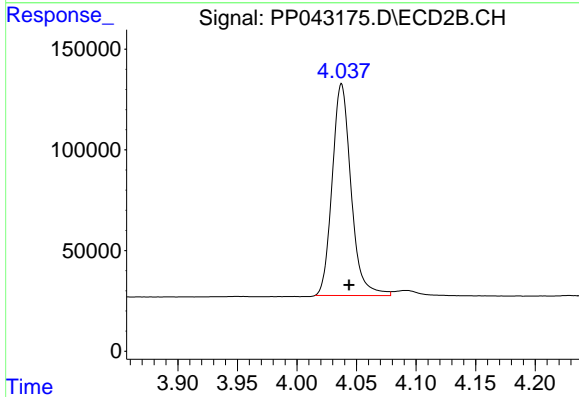
Volume Inj. : 2 µl  
 Signal #1 Phase : ZB-MR1 Signal #2 Phase: ZB-MR2  
 Signal #1 Info : 30Mx0.32mmx 0.50µ Signal #2 Info : 30M x 0.32mm x 0.25µm



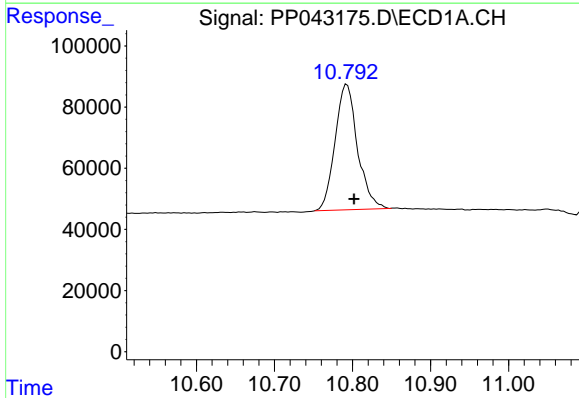


#1 Tetrachloro-m-xylene  
 R.T.: 4.873 min  
 Delta R.T.: -0.002 min  
 Response: 1106326  
 Conc: 46.76 ng/ml

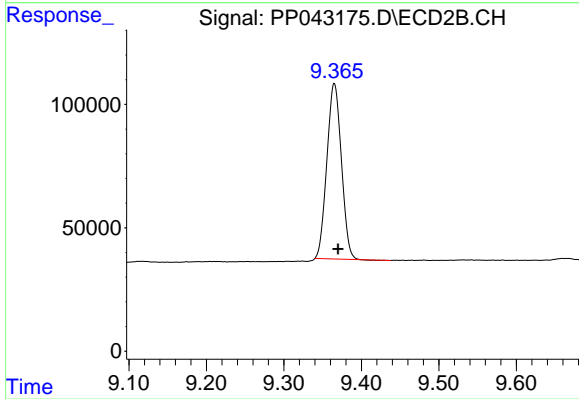
Instrument :  
 ECD\_O  
 ClientSampleId :



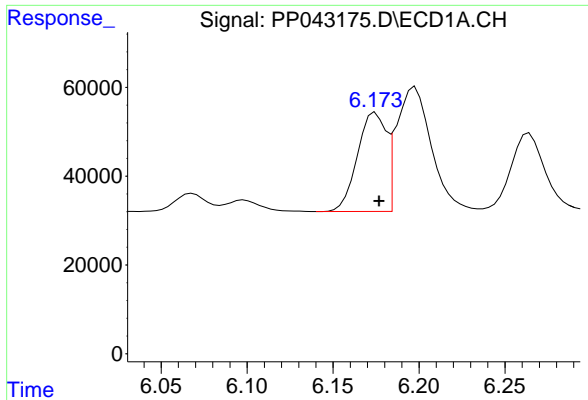
#1 Tetrachloro-m-xylene  
 R.T.: 4.037 min  
 Delta R.T.: -0.006 min  
 Response: 1159242  
 Conc: 46.41 ng/ml



#2 Decachlorobiphenyl  
 R.T.: 10.793 min  
 Delta R.T.: -0.009 min  
 Response: 820446  
 Conc: 56.12 ng/ml

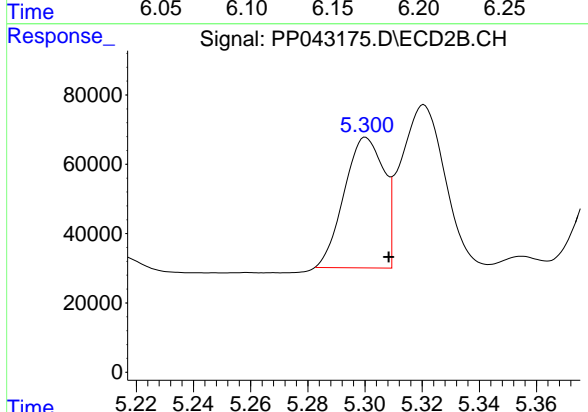


#2 Decachlorobiphenyl  
 R.T.: 9.365 min  
 Delta R.T.: -0.005 min  
 Response: 923344  
 Conc: 47.33 ng/ml

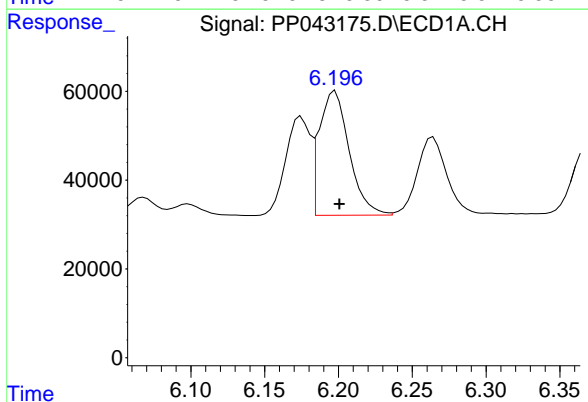


#3 AR-1016-1  
 R.T.: 6.175 min  
 Delta R.T.: -0.002 min  
 Response: 258251  
 Conc: 347.87 ng/ml

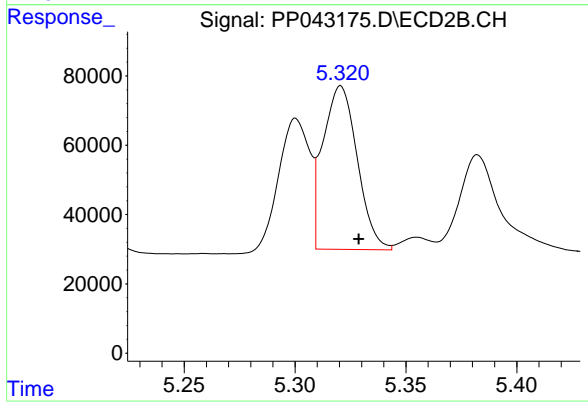
Instrument :  
 ECD\_O  
 ClientSampleId :



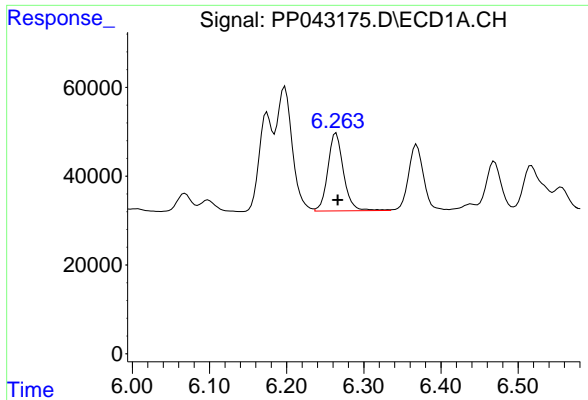
#3 AR-1016-1  
 R.T.: 5.300 min  
 Delta R.T.: -0.008 min  
 Response: 361726  
 Conc: 353.33 ng/ml



#4 AR-1016-2  
 R.T.: 6.198 min  
 Delta R.T.: -0.003 min  
 Response: 395568  
 Conc: 343.99 ng/ml

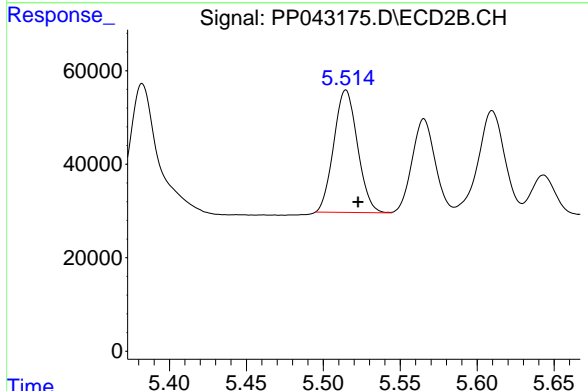


#4 AR-1016-2  
 R.T.: 5.321 min  
 Delta R.T.: -0.008 min  
 Response: 507469  
 Conc: 355.33 ng/ml

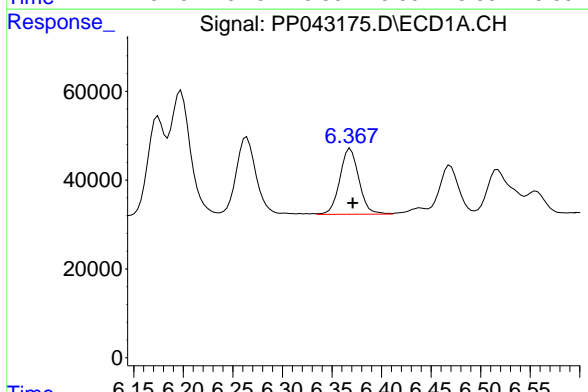


#5 AR-1016-3  
 R.T.: 6.264 min  
 Delta R.T.: -0.002 min  
 Response: 247668  
 Conc: 347.95 ng/ml

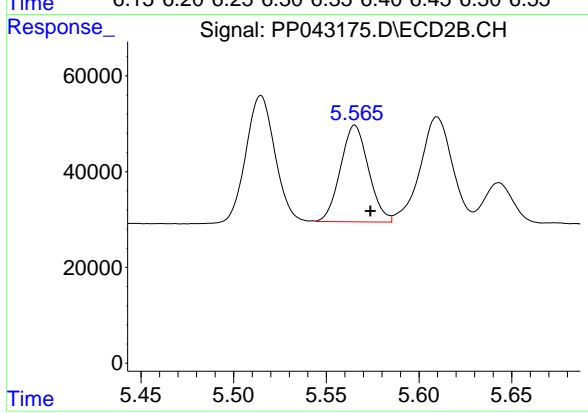
Instrument :  
 ECD\_O  
 ClientSampleId :



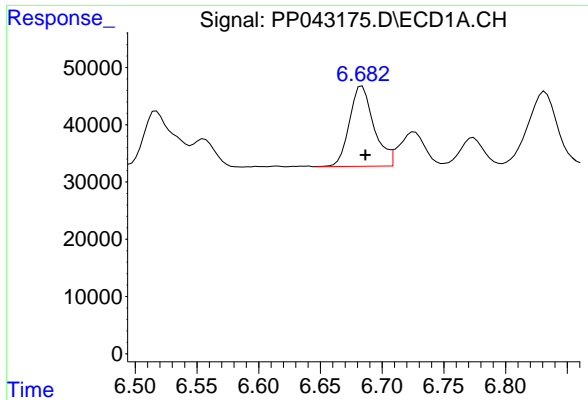
#5 AR-1016-3  
 R.T.: 5.515 min  
 Delta R.T.: -0.008 min  
 Response: 280027  
 Conc: 350.11 ng/ml



#6 AR-1016-4  
 R.T.: 6.369 min  
 Delta R.T.: -0.002 min  
 Response: 197893  
 Conc: 326.36 ng/ml

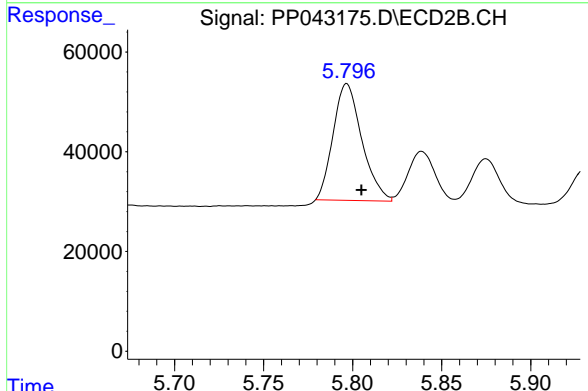


#6 AR-1016-4  
 R.T.: 5.565 min  
 Delta R.T.: -0.008 min  
 Response: 211960  
 Conc: 341.04 ng/ml

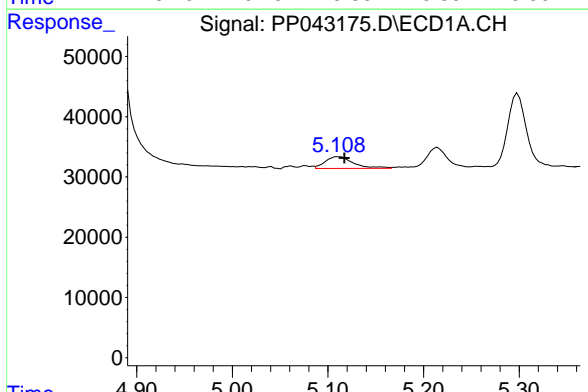


#7 AR-1016-5  
 R.T.: 6.684 min  
 Delta R.T.: -0.002 min  
 Response: 193383  
 Conc: 337.81 ng/ml

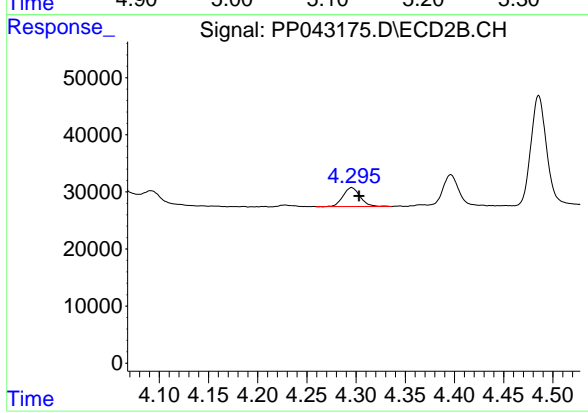
Instrument :  
 ECD\_O  
 ClientSampleId :



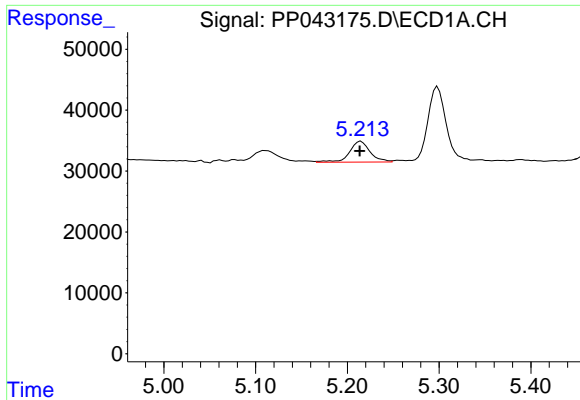
#7 AR-1016-5  
 R.T.: 5.797 min  
 Delta R.T.: -0.008 min  
 Response: 262872  
 Conc: 352.55 ng/ml



#8 AR-1221-1  
 R.T.: 5.111 min  
 Delta R.T.: -0.006 min  
 Response: 39997  
 Conc: 150.24 ng/ml



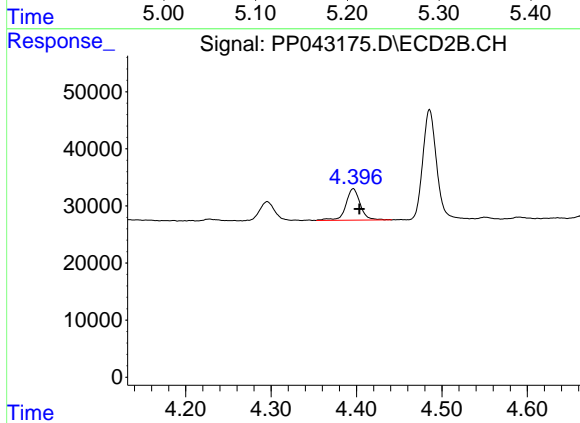
#8 AR-1221-1  
 R.T.: 4.296 min  
 Delta R.T.: -0.007 min  
 Response: 40198  
 Conc: 120.38 ng/ml



#9 AR-1221-2

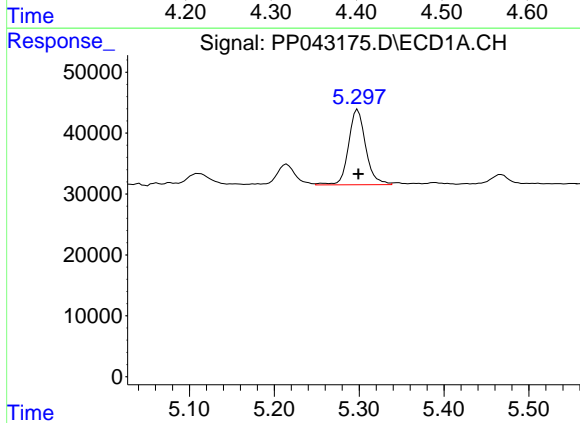
R.T.: 5.215 min  
 Delta R.T.: 0.002 min  
 Response: 53134  
 Conc: 262.92 ng/ml

Instrument :  
 ECD\_O  
 ClientSampleId :



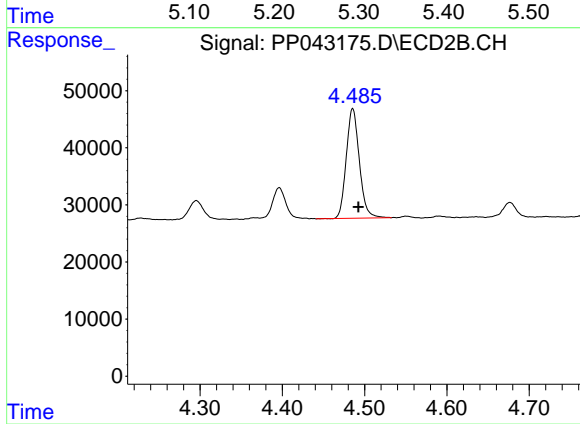
#9 AR-1221-2

R.T.: 4.396 min  
 Delta R.T.: -0.007 min  
 Response: 64966  
 Conc: 267.02 ng/ml



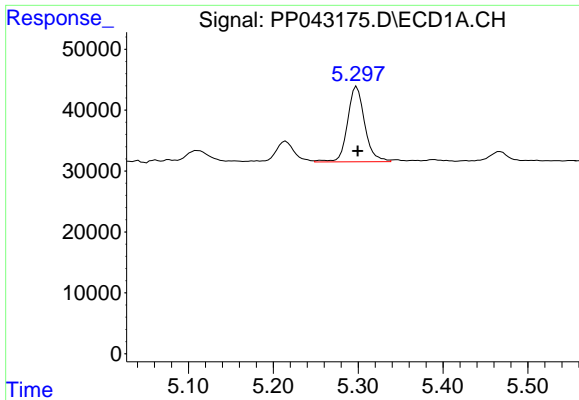
#10 AR-1221-3

R.T.: 5.298 min  
 Delta R.T.: 0.000 min  
 Response: 173749  
 Conc: 264.64 ng/ml



#10 AR-1221-3

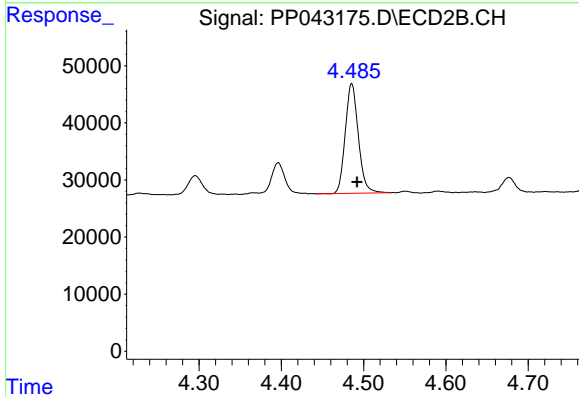
R.T.: 4.486 min  
 Delta R.T.: -0.007 min  
 Response: 213119  
 Conc: 271.86 ng/ml



#11 AR-1232-1

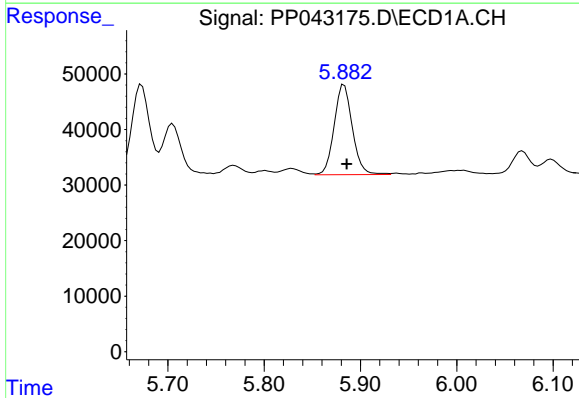
R.T.: 5.298 min  
 Delta R.T.: -0.001 min  
 Response: 173749  
 Conc: 304.63 ng/ml

Instrument :  
 ECD\_O  
 ClientSampleId :



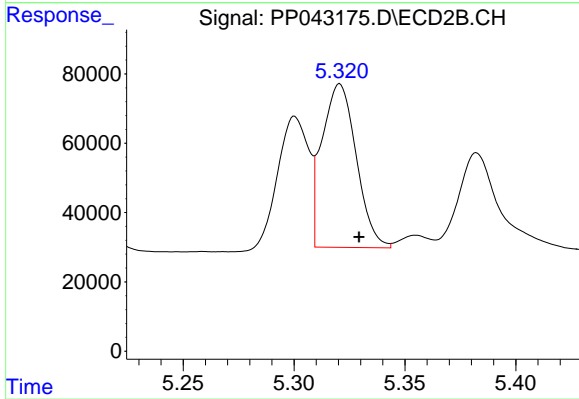
#11 AR-1232-1

R.T.: 4.486 min  
 Delta R.T.: -0.007 min  
 Response: 213119  
 Conc: 327.32 ng/ml



#12 AR-1232-2

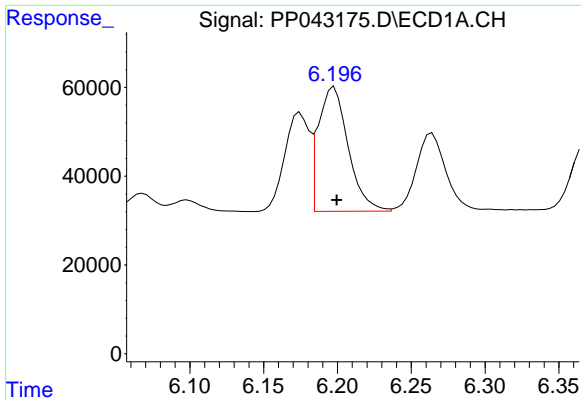
R.T.: 5.883 min  
 Delta R.T.: -0.003 min  
 Response: 212842  
 Conc: 784.72 ng/ml



#12 AR-1232-2

R.T.: 5.321 min  
 Delta R.T.: -0.009 min  
 Response: 507469  
 Conc: 809.21 ng/ml

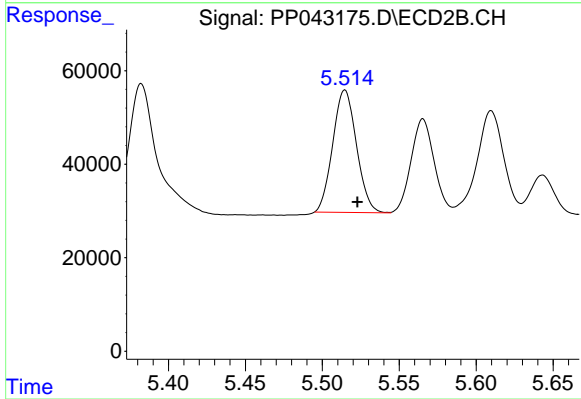




#13 AR-1232-3

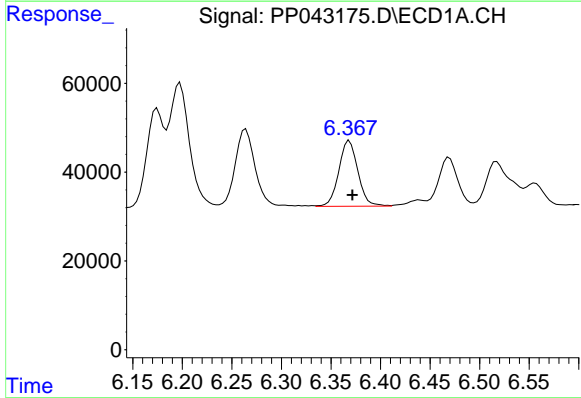
R.T.: 6.198 min  
 Delta R.T.: -0.002 min  
 Response: 395568  
 Conc: 810.42 ng/ml

Instrument :  
 ECD\_O  
 ClientSampleId :



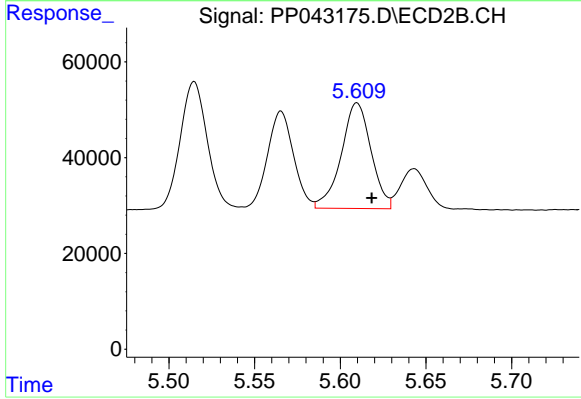
#13 AR-1232-3

R.T.: 5.515 min  
 Delta R.T.: -0.008 min  
 Response: 280027  
 Conc: 846.81 ng/ml



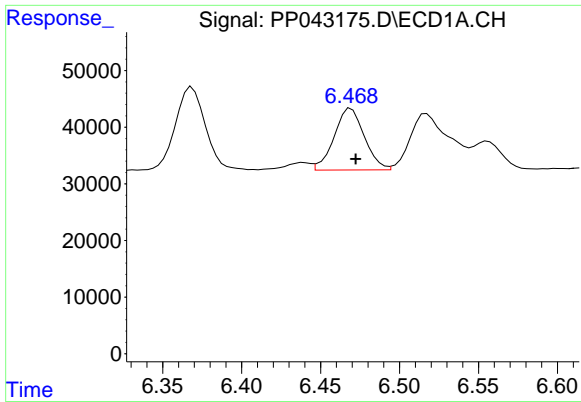
#14 AR-1232-4

R.T.: 6.369 min  
 Delta R.T.: -0.003 min  
 Response: 197893  
 Conc: 828.22 ng/ml



#14 AR-1232-4

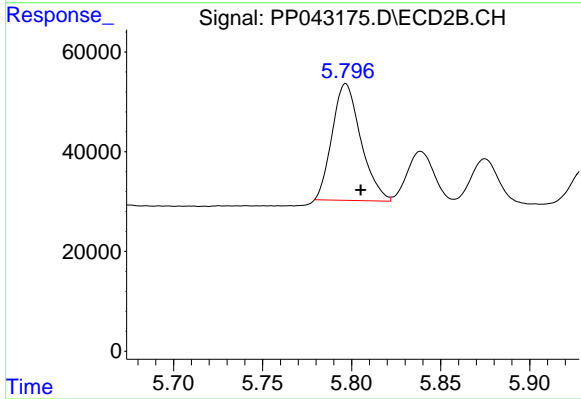
R.T.: 5.610 min  
 Delta R.T.: -0.009 min  
 Response: 267213  
 Conc: 905.28 ng/ml



#15 AR-1232-5

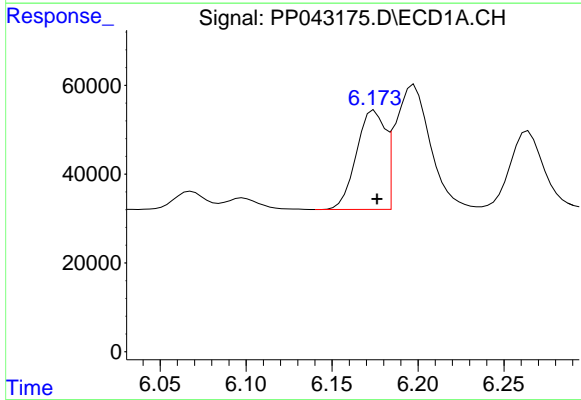
R.T.: 6.469 min  
 Delta R.T.: -0.003 min  
 Response: 145113  
 Conc: 923.62 ng/ml

Instrument :  
 ECD\_O  
 ClientSampleId :



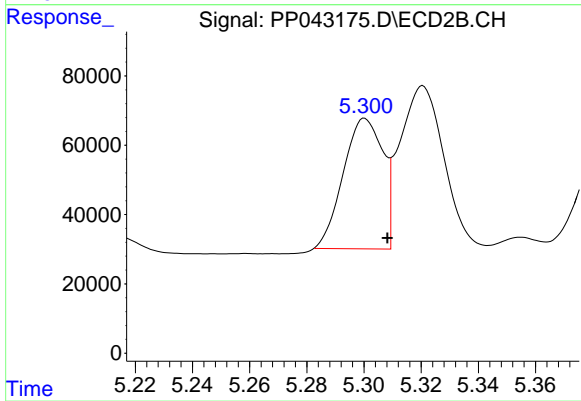
#15 AR-1232-5

R.T.: 5.797 min  
 Delta R.T.: -0.008 min  
 Response: 262872  
 Conc: 852.34 ng/ml



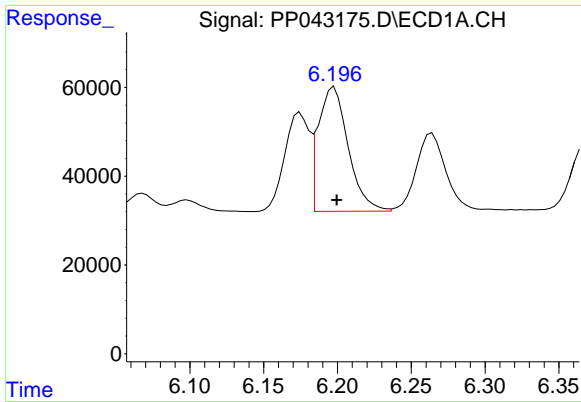
#16 AR-1242-1

R.T.: 6.175 min  
 Delta R.T.: -0.001 min  
 Response: 258251  
 Conc: 435.89 ng/ml



#16 AR-1242-1

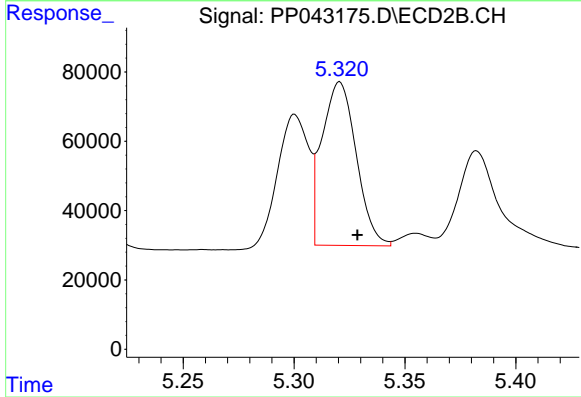
R.T.: 5.300 min  
 Delta R.T.: -0.008 min  
 Response: 361726  
 Conc: 451.38 ng/ml



#17 AR-1242-2

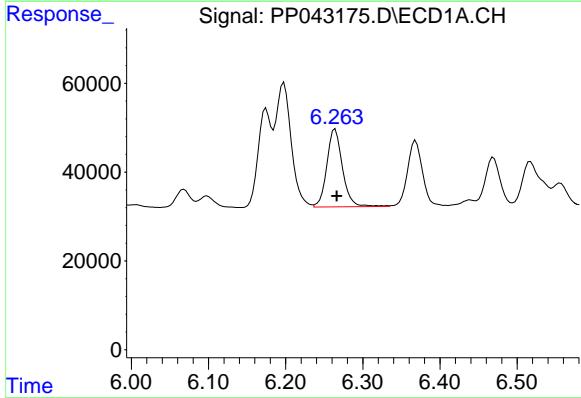
R.T.: 6.198 min  
 Delta R.T.: -0.002 min  
 Response: 395568  
 Conc: 443.38 ng/ml

Instrument :  
 ECD\_O  
 ClientSampleId :



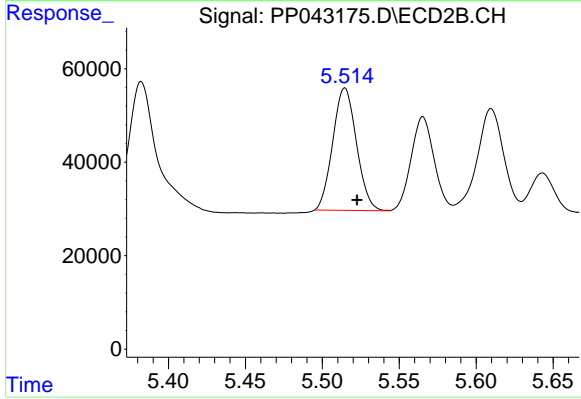
#17 AR-1242-2

R.T.: 5.321 min  
 Delta R.T.: -0.008 min  
 Response: 507469  
 Conc: 448.18 ng/ml



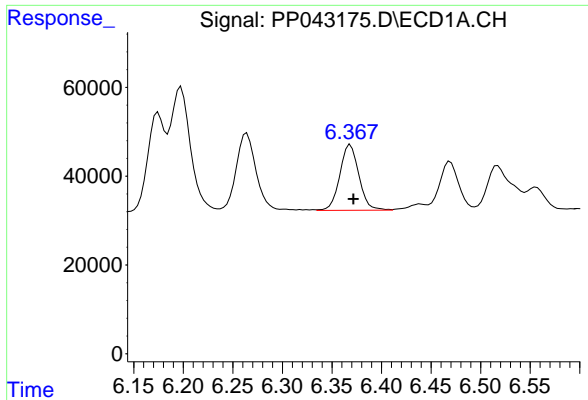
#18 AR-1242-3

R.T.: 6.264 min  
 Delta R.T.: -0.002 min  
 Response: 247668  
 Conc: 446.37 ng/ml



#18 AR-1242-3

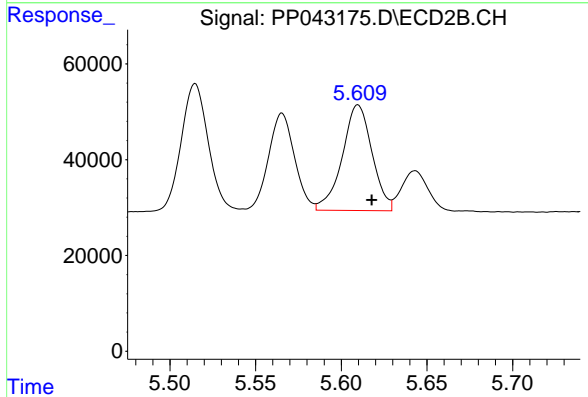
R.T.: 5.515 min  
 Delta R.T.: -0.008 min  
 Response: 280027  
 Conc: 439.18 ng/ml



#19 AR-1242-4

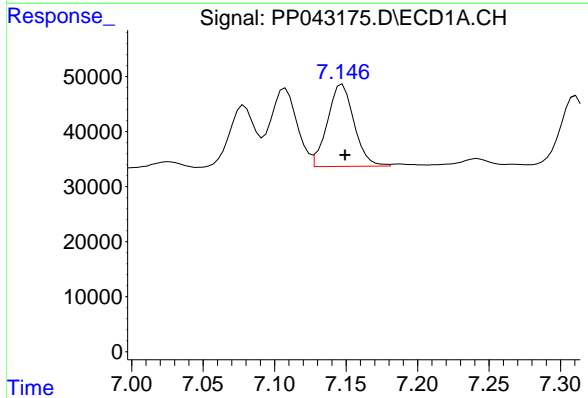
R.T.: 6.369 min  
 Delta R.T.: -0.003 min  
 Response: 197893  
 Conc: 434.95 ng/ml

Instrument :  
 ECD\_O  
 ClientSampleId :



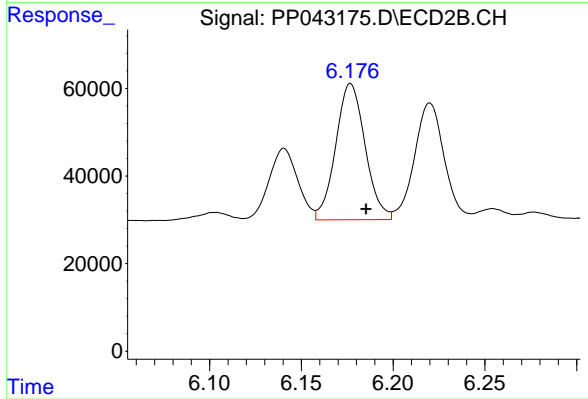
#19 AR-1242-4

R.T.: 5.610 min  
 Delta R.T.: -0.008 min  
 Response: 267213  
 Conc: 435.02 ng/ml



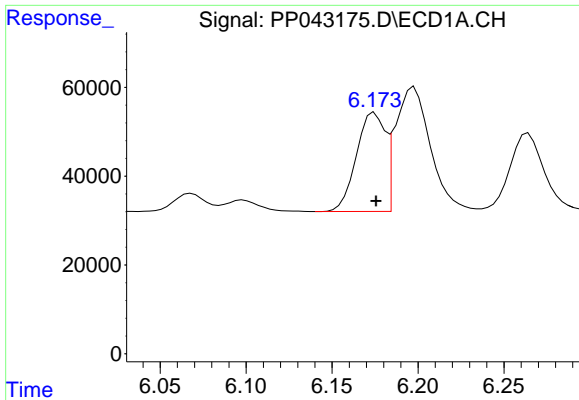
#20 AR-1242-5

R.T.: 7.147 min  
 Delta R.T.: -0.002 min  
 Response: 193078  
 Conc: 430.44 ng/ml



#20 AR-1242-5

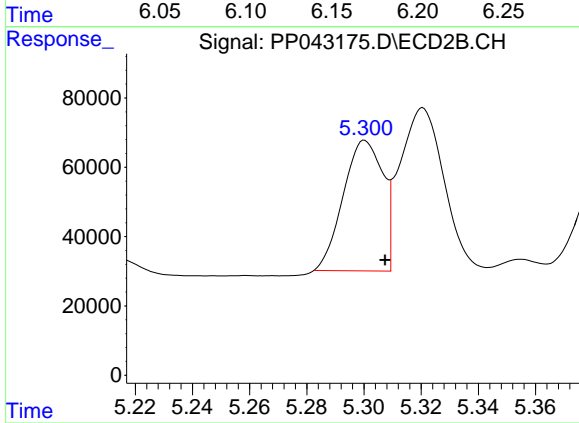
R.T.: 6.177 min  
 Delta R.T.: -0.008 min  
 Response: 347562  
 Conc: 483.02 ng/ml



#21 AR-1248-1

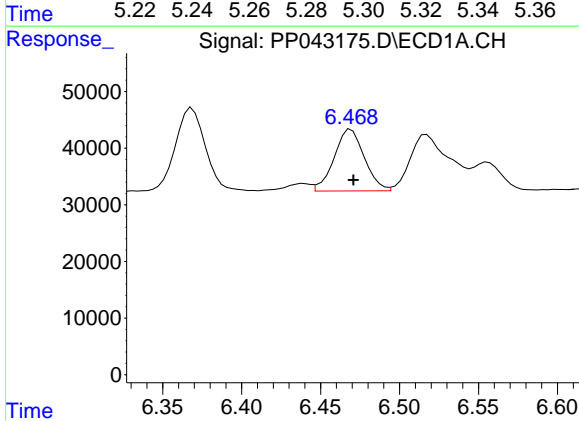
R.T.: 6.175 min  
 Delta R.T.: 0.000 min  
 Response: 258251  
 Conc: 630.09 ng/ml

Instrument :  
 ECD\_O  
 ClientSampleId :



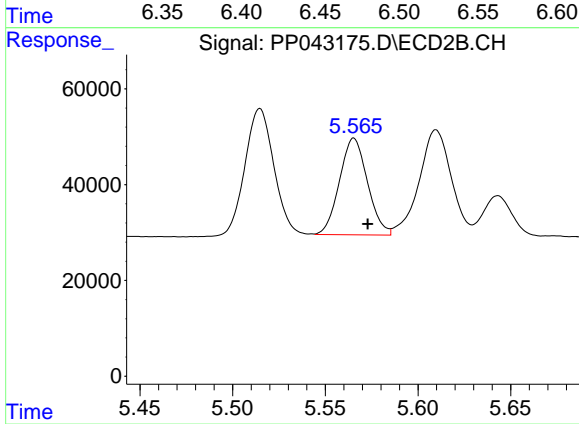
#21 AR-1248-1

R.T.: 5.300 min  
 Delta R.T.: -0.007 min  
 Response: 361726  
 Conc: 643.94 ng/ml



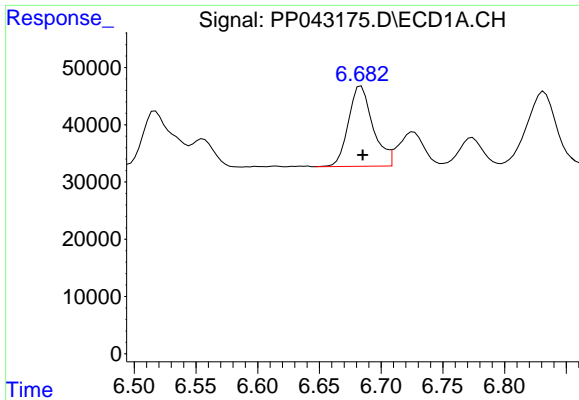
#22 AR-1248-2

R.T.: 6.469 min  
 Delta R.T.: -0.002 min  
 Response: 145113  
 Conc: 257.76 ng/ml



#22 AR-1248-2

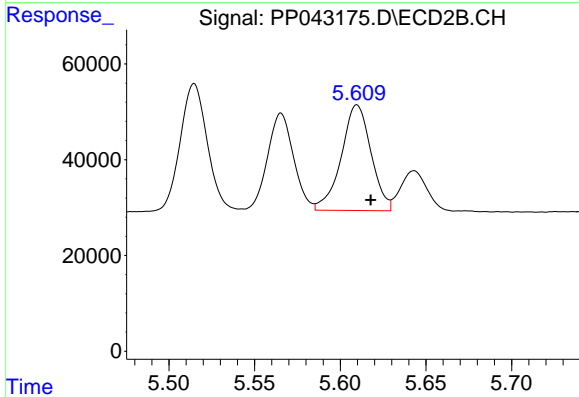
R.T.: 5.565 min  
 Delta R.T.: -0.007 min  
 Response: 211960  
 Conc: 261.15 ng/ml



#23 AR-1248-3

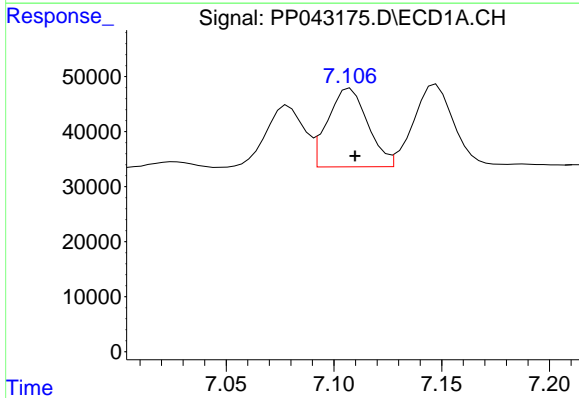
R.T.: 6.684 min  
 Delta R.T.: -0.001 min  
 Response: 193383  
 Conc: 285.23 ng/ml

Instrument :  
 ECD\_O  
 ClientSampleId :



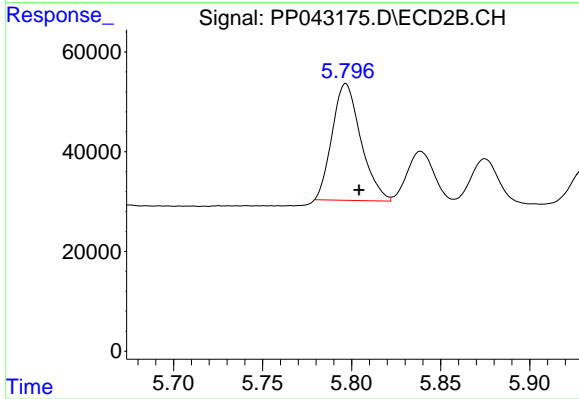
#23 AR-1248-3

R.T.: 5.610 min  
 Delta R.T.: -0.008 min  
 Response: 267213  
 Conc: 310.90 ng/ml



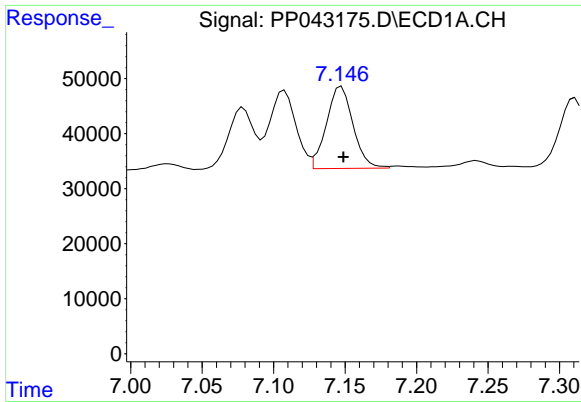
#24 AR-1248-4

R.T.: 7.108 min  
 Delta R.T.: -0.002 min  
 Response: 183634  
 Conc: 254.58 ng/ml



#24 AR-1248-4

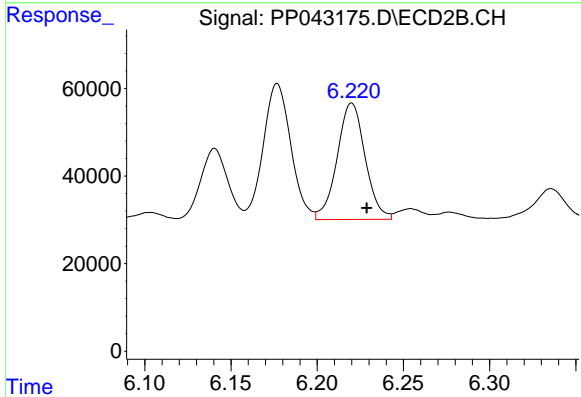
R.T.: 5.797 min  
 Delta R.T.: -0.007 min  
 Response: 262872  
 Conc: 273.90 ng/ml



#25 AR-1248-5

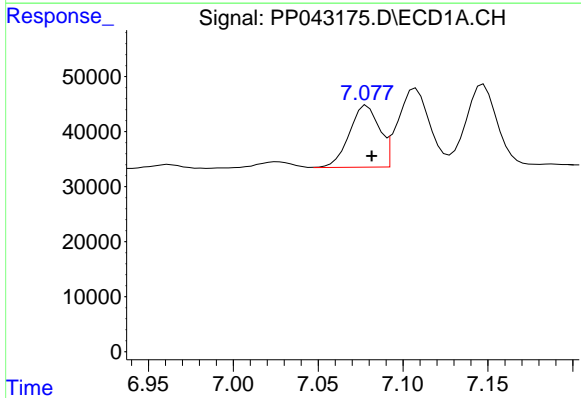
R.T.: 7.147 min  
 Delta R.T.: -0.001 min  
 Response: 193078  
 Conc: 264.62 ng/ml

Instrument :  
 ECD\_O  
 ClientSampleId :



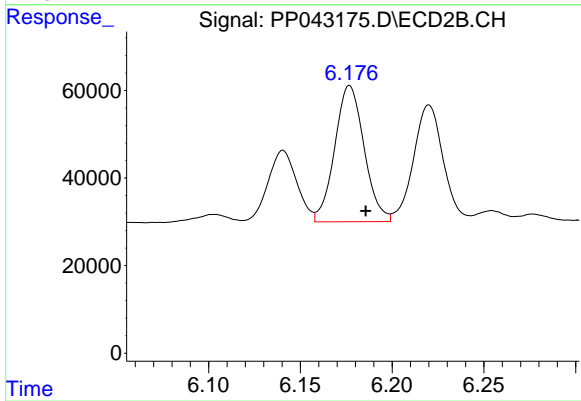
#25 AR-1248-5

R.T.: 6.220 min  
 Delta R.T.: -0.009 min  
 Response: 299816  
 Conc: 314.05 ng/ml



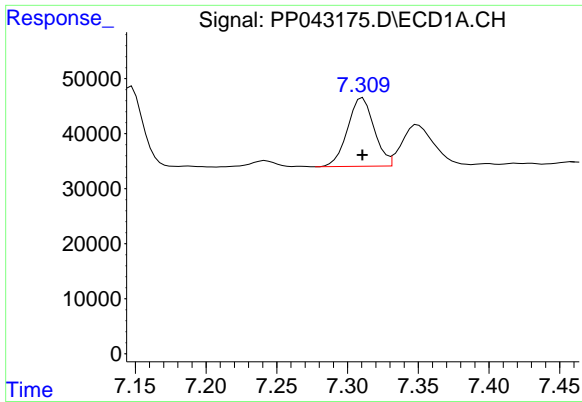
#26 AR-1254-1

R.T.: 7.079 min  
 Delta R.T.: -0.003 min  
 Response: 137806  
 Conc: 175.62 ng/ml



#26 AR-1254-1

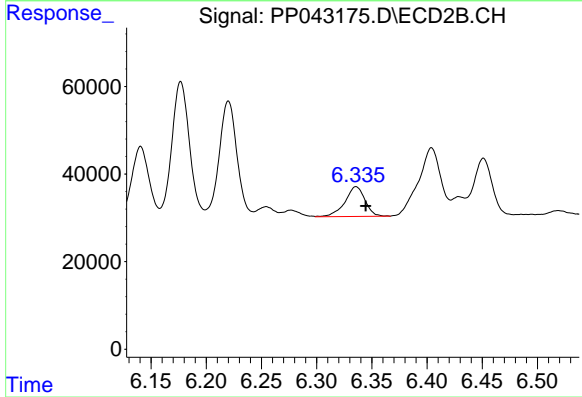
R.T.: 6.177 min  
 Delta R.T.: -0.009 min  
 Response: 347562  
 Conc: 224.13 ng/ml



#27 AR-1254-2

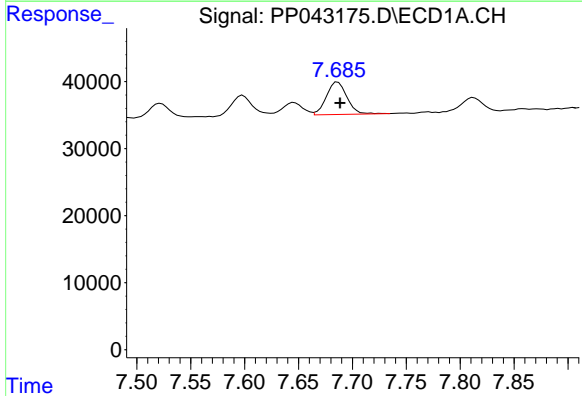
R.T.: 7.311 min  
 Delta R.T.: 0.000 min  
 Response: 163121  
 Conc: 129.61 ng/ml

Instrument :  
 ECD\_O  
 ClientSampleId :



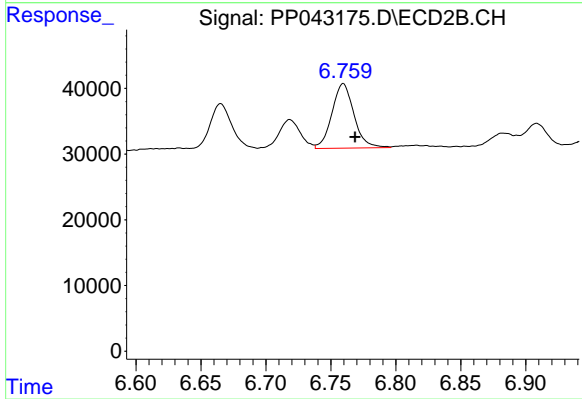
#27 AR-1254-2

R.T.: 6.336 min  
 Delta R.T.: -0.009 min  
 Response: 85796  
 Conc: 63.20 ng/ml



#28 AR-1254-3

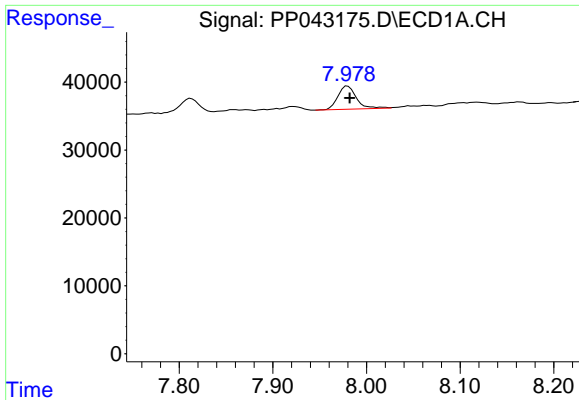
R.T.: 7.686 min  
 Delta R.T.: -0.002 min  
 Response: 64266  
 Conc: 49.53 ng/ml



#28 AR-1254-3

R.T.: 6.760 min  
 Delta R.T.: -0.009 min  
 Response: 116098  
 Conc: 54.28 ng/ml

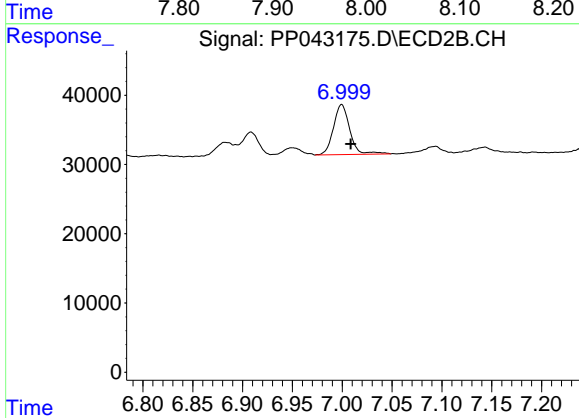




#29 AR-1254-4

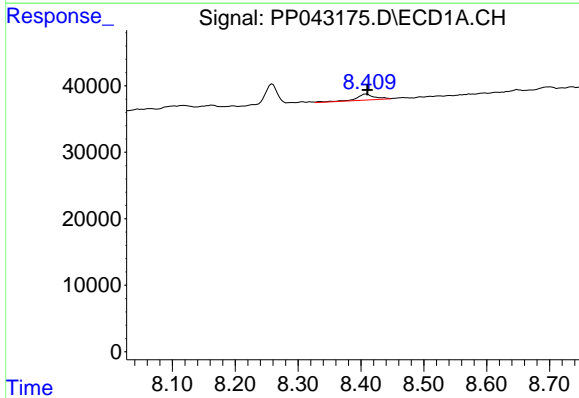
R.T.: 7.980 min  
 Delta R.T.: -0.002 min  
 Response: 46927  
 Conc: 53.69 ng/ml

Instrument :  
 ECD\_O  
 ClientSampleId :



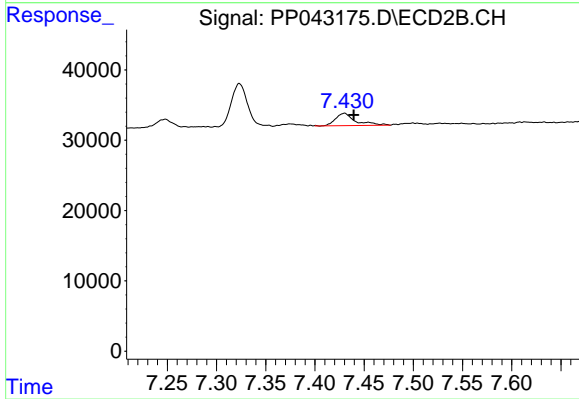
#29 AR-1254-4

R.T.: 6.999 min  
 Delta R.T.: -0.009 min  
 Response: 82110  
 Conc: 65.81 ng/ml



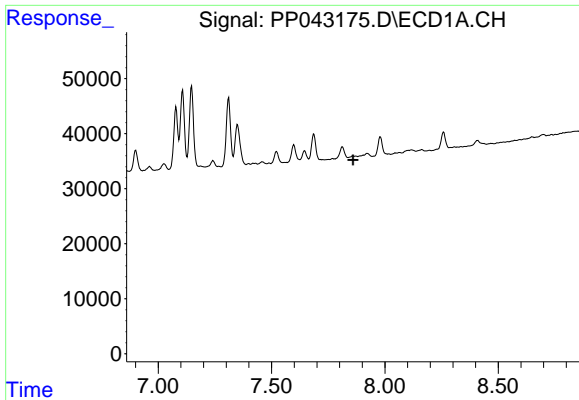
#30 AR-1254-5

R.T.: 8.410 min  
 Delta R.T.: 0.000 min  
 Response: 18368  
 Conc: 19.60 ng/ml



#30 AR-1254-5

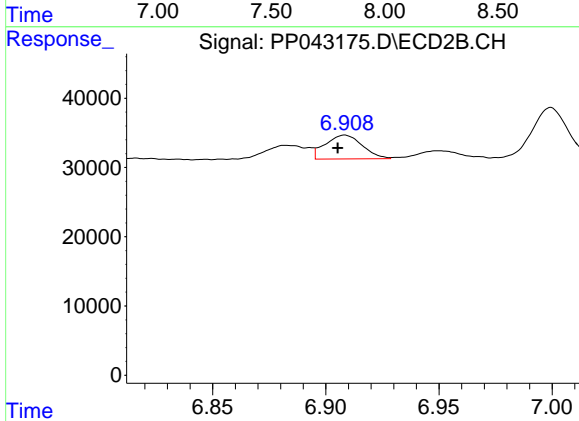
R.T.: 7.430 min  
 Delta R.T.: -0.010 min  
 Response: 24861  
 Conc: 14.58 ng/ml



#31 AR-1260-1

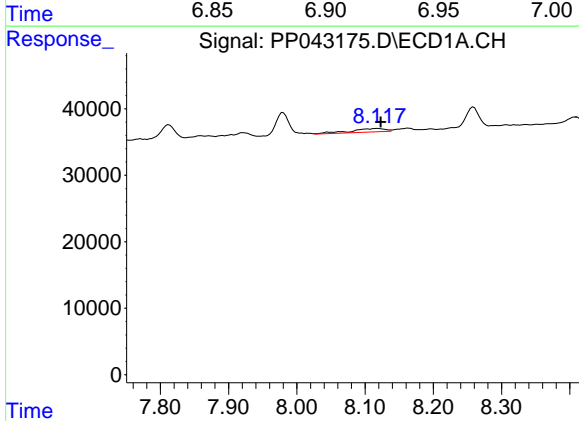
R.T.: 0.000 min  
 Exp R.T.: 7.859 min  
 Response: 0  
 Conc: N.D.

Instrument :  
 ECD\_O  
 ClientSampleId :



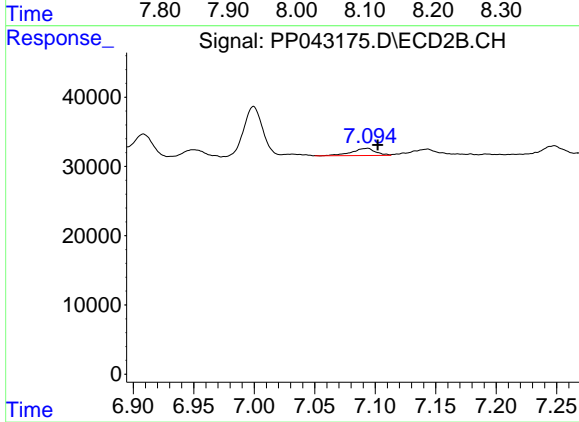
#31 AR-1260-1

R.T.: 6.908 min  
 Delta R.T.: 0.003 min  
 Response: 39272  
 Conc: 30.38 ng/ml



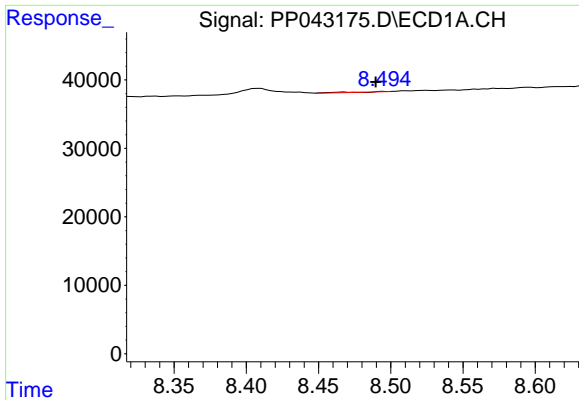
#32 AR-1260-2

R.T.: 8.119 min  
 Delta R.T.: -0.004 min  
 Response: 18390  
 Conc: 17.81 ng/ml



#32 AR-1260-2

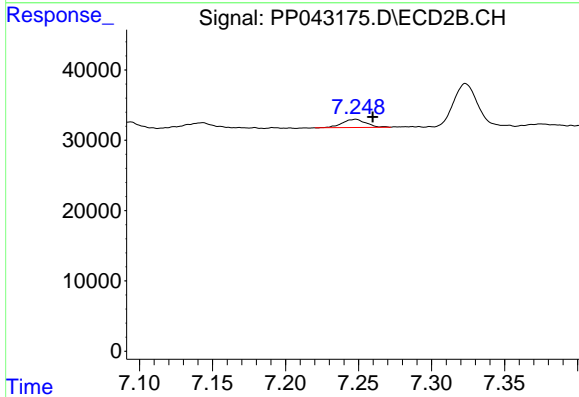
R.T.: 7.093 min  
 Delta R.T.: -0.009 min  
 Response: 14103  
 Conc: 9.03 ng/ml



#33 AR-1260-3

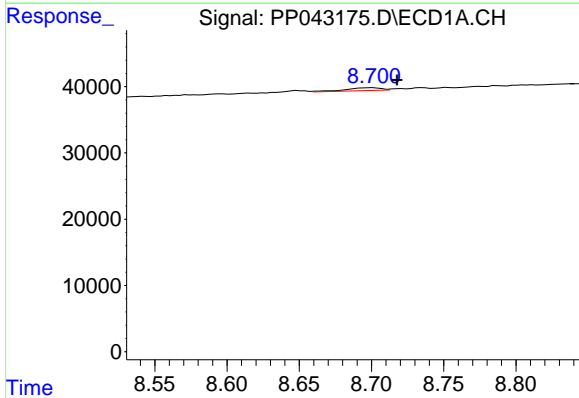
R.T.: 8.495 min  
 Delta R.T.: 0.006 min  
 Response: 923  
 Conc: 1.22 ng/ml

Instrument :  
 ECD\_O  
 ClientSampleId :



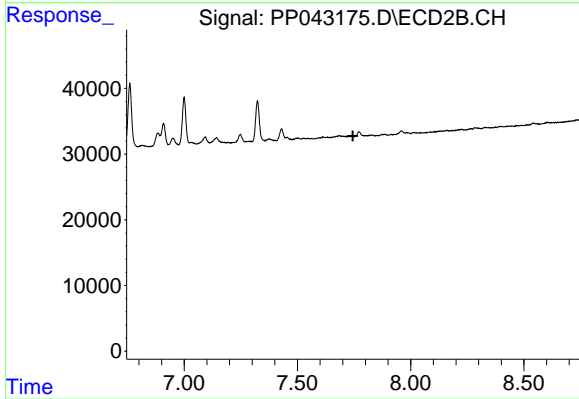
#33 AR-1260-3

R.T.: 7.248 min  
 Delta R.T.: -0.012 min  
 Response: 13159  
 Conc: 9.10 ng/ml



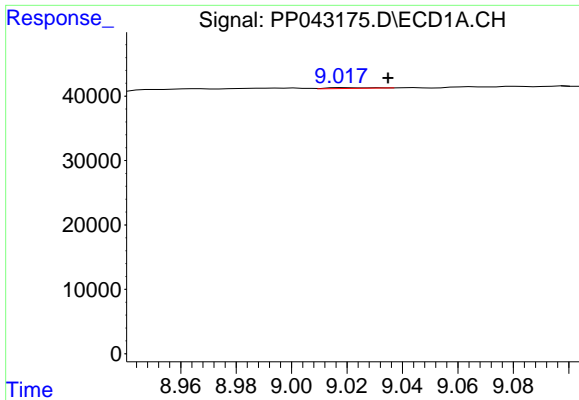
#34 AR-1260-4

R.T.: 8.701 min  
 Delta R.T.: -0.017 min  
 Response: 7015  
 Conc: 8.24 ng/ml



#34 AR-1260-4

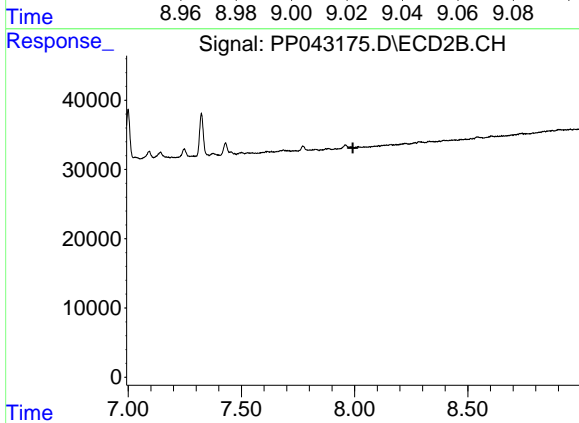
R.T.: 0.000 min  
 Exp R.T.: 7.745 min  
 Response: 0  
 Conc: N.D.



#35 AR-1260-5

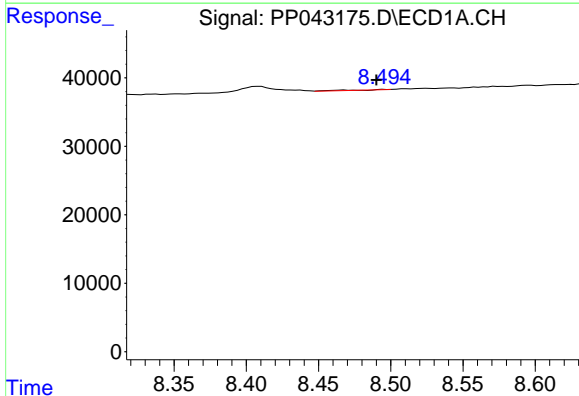
R.T.: 9.018 min  
 Delta R.T.: -0.016 min  
 Response: 1344  
 Conc: 0.82 ng/ml

Instrument :  
 ECD\_O  
 ClientSampleId :



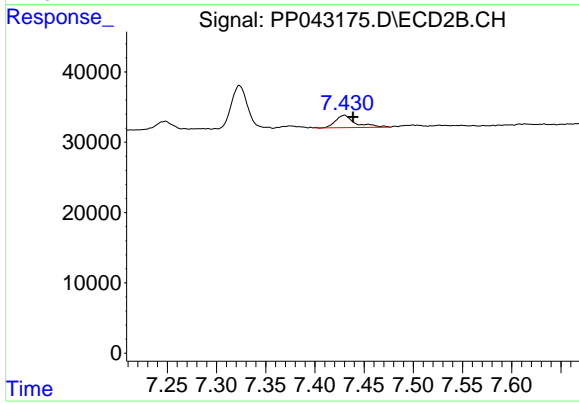
#35 AR-1260-5

R.T.: 0.000 min  
 Exp R.T. : 7.992 min  
 Response: 0  
 Conc: N.D.



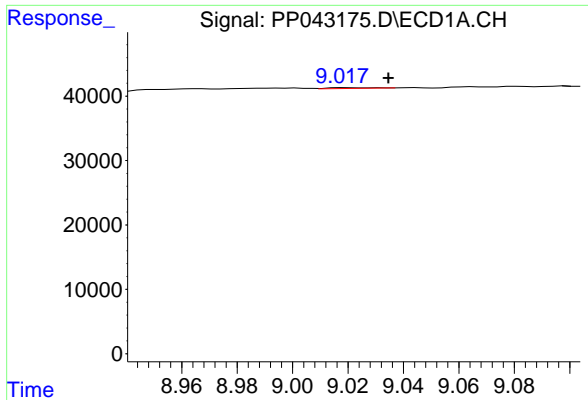
#36 AR-1262-1

R.T.: 8.495 min  
 Delta R.T.: 0.005 min  
 Response: 923  
 Conc: 0.87 ng/ml



#36 AR-1262-1

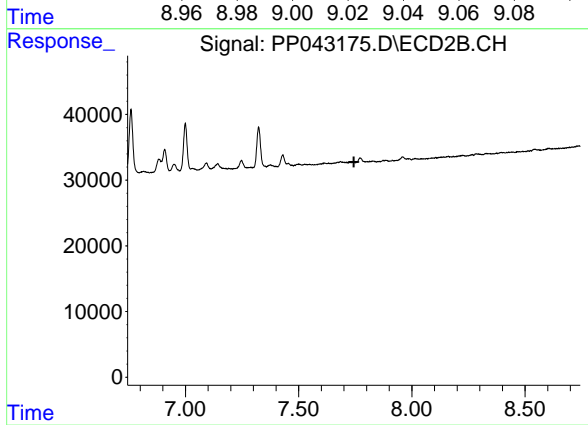
R.T.: 7.430 min  
 Delta R.T.: -0.009 min  
 Response: 24861  
 Conc: 27.46 ng/ml



#37 AR-1262-2

R.T.: 9.018 min  
 Delta R.T.: -0.016 min  
 Response: 1344  
 Conc: 0.78 ng/ml

Instrument :  
 ECD\_O  
 ClientSampleId :



#37 AR-1262-2

R.T.: 0.000 min  
 Exp R.T. : 7.744 min  
 Response: 0  
 Conc: N.D.