

Data Path : Z:\pestpcbsrv\HPCHEM1\ECD_O\Data\P0012125\
 Data File : P0108982.D
 Signal(s) : Signal #1: ECD1A.ch Signal #2: ECD2B.ch
 Acq On : 21 Jan 2025 17:36
 Operator : YP/AJ
 Sample : AR1660ICC1000
 Misc :
 ALS Vial : 3 Sample Multiplier: 1

Instrument :
 ECD_O
ClientSampleId :
 AR1660ICC1000

Manual Integrations
APPROVED

Reviewed By :Yogesh Patel 01/22/2025
 Supervised By :Ankita Jodhani 01/22/2025

Integration File signal 1: autoint1.e
 Integration File signal 2: autoint2.e
 Quant Time: Jan 21 23:47:37 2025
 Quant Method : Z:\pestpcbsrv\HPCHEM1\ECD_O\methods\P0012125.M
 Quant Title : GC EXTRACTABLES
 QLast Update : Tue Jan 21 23:33:02 2025
 Response via : Initial Calibration
 Integrator: ChemStation

Volume Inj. : 2 µl
 Signal #1 Phase : ZB-MR1 Signal #2 Phase: ZB-MR2
 Signal #1 Info : 30Mx0.32mmx 0.50µ Signal #2 Info : 30M x 0.32mm x 0.25µm

Compound	RT#1	RT#2	Resp#1	Resp#2	ng/ml	ng/ml

System Monitoring Compounds						
1) SA Tetrachlo...	3.700	3.696	760.1E6	531.6E6	100.743	98.963
2) SA Decachlor...	8.760	8.711	643.4E6	315.7E6	91.253	89.948
Target Compounds						
3) L1 AR-1016-1	4.794	4.781	233.1E6	145.5E6	906.544	876.526m
4) L1 AR-1016-2	4.814	4.800	325.4E6	223.1E6	930.235	921.972m
5) L1 AR-1016-3	4.870	4.976	223.0E6	121.3E6	894.404	914.184m
6) L1 AR-1016-4	4.991	5.017	176.0E6	98703058	904.552	869.842m
7) L1 AR-1016-5	5.249	5.231	190.1E6	130.9E6	890.903	892.603m
31) L7 AR-1260-1	6.290	6.265	348.8E6	229.9E6	896.097	892.313
32) L7 AR-1260-2	6.479	6.452	430.5E6	274.6E6	898.154	893.495
33) L7 AR-1260-3	6.848	6.606	359.9E6	255.5E6	900.802	899.511
34) L7 AR-1260-4	7.109	7.077	332.5E6	210.0E6	912.593	914.962m
35) L7 AR-1260-5	7.350	7.317	803.2E6	481.2E6	953.345	951.781

(f)=RT Delta > 1/2 Window (#)=Amounts differ by > 25% (m)=manual int.

Data Path : Z:\pestpcbsrv\HPCHEM1\ECD_O\Data\PO012125\
 Data File : PO108982.D
 Signal(s) : Signal #1: ECD1A.ch Signal #2: ECD2B.ch
 Acq On : 21 Jan 2025 17:36
 Operator : YP/AJ
 Sample : AR1660ICC1000
 Misc :
 ALS Vial : 3 Sample Multiplier: 1

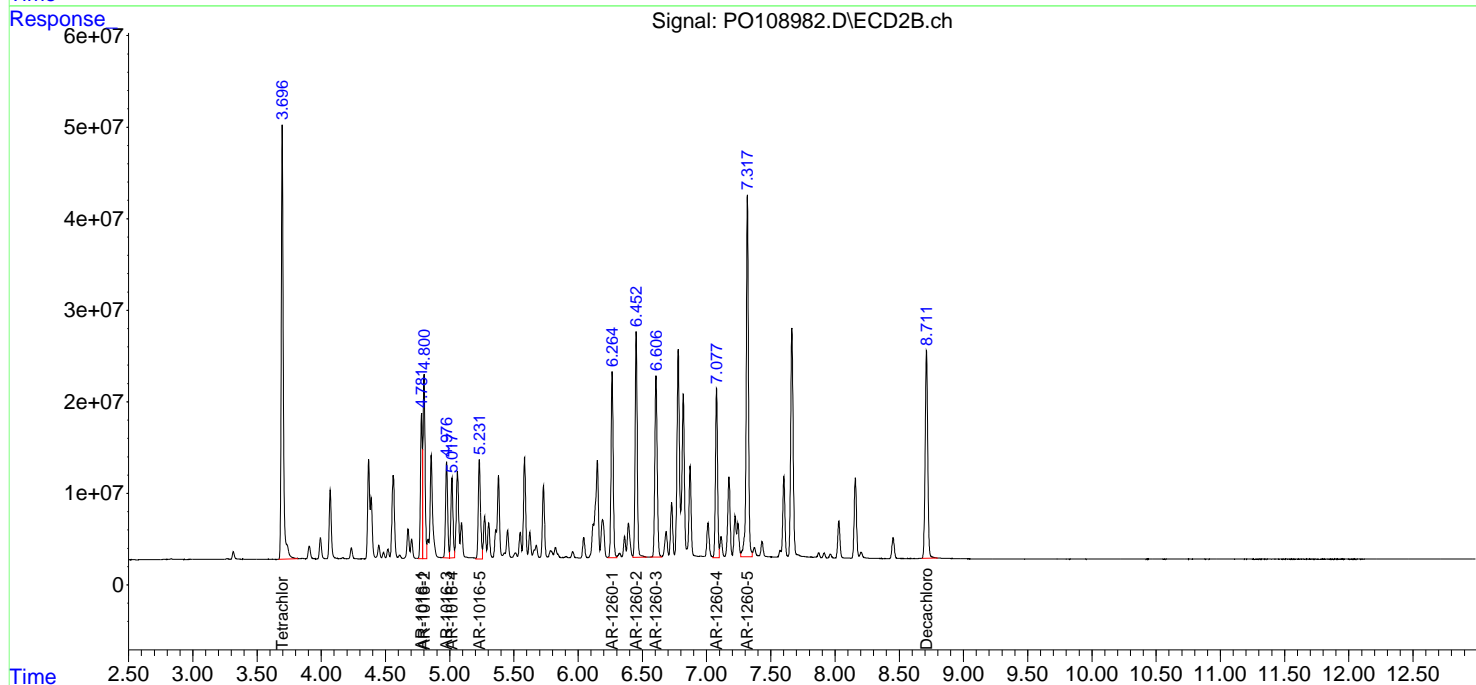
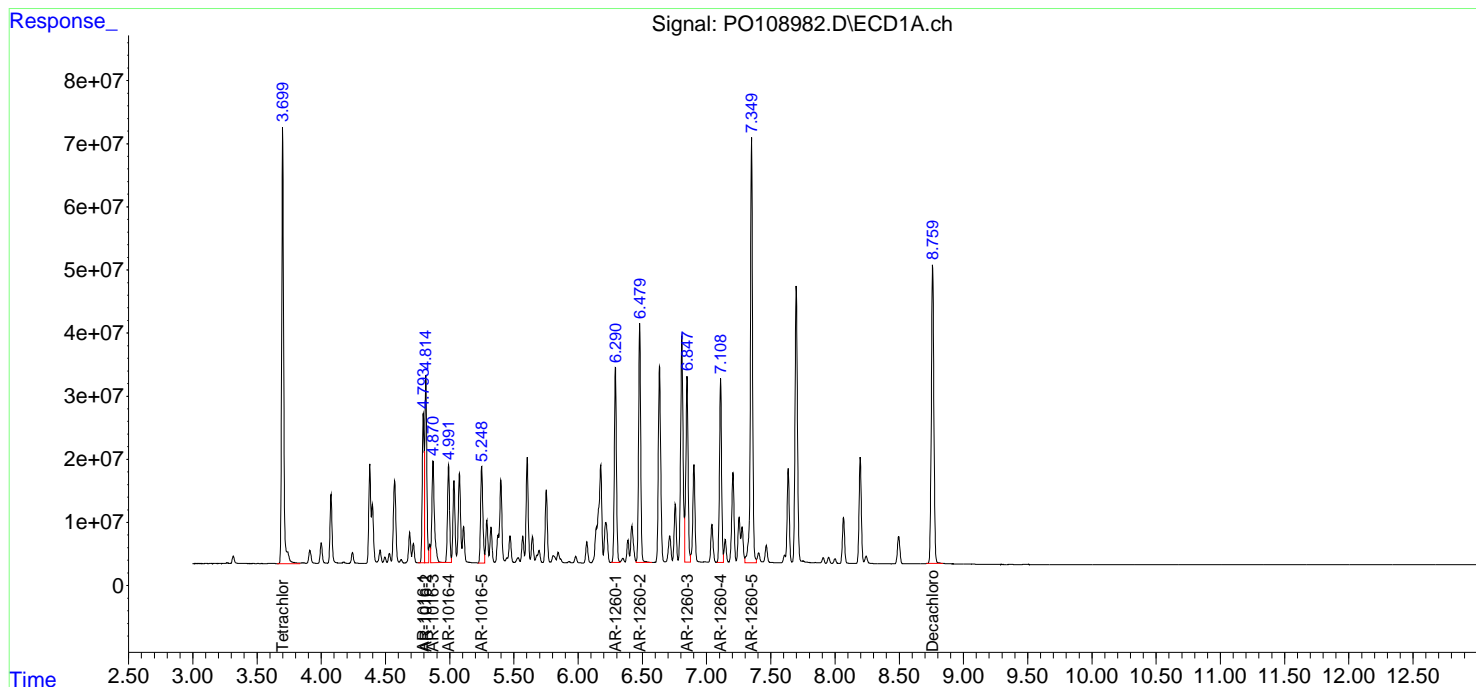
Instrument :
 ECD_O
ClientSampleId :
 AR1660ICC1000

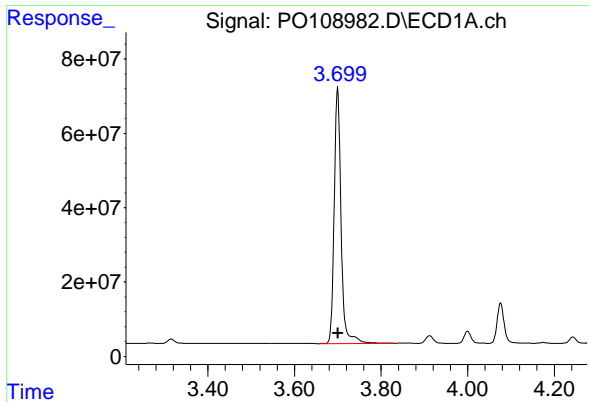
Manual Integrations
APPROVED

Reviewed By :Yogesh Patel 01/22/2025
 Supervised By :Ankita Jodhani 01/22/2025

Integration File signal 1: autoint1.e
 Integration File signal 2: autoint2.e
 Quant Time: Jan 21 23:47:37 2025
 Quant Method : Z:\pestpcbsrv\HPCHEM1\ECD_O\methods\PO012125.M
 Quant Title : GC EXTRACTABLES
 QLast Update : Tue Jan 21 23:33:02 2025
 Response via : Initial Calibration
 Integrator: ChemStation

Volume Inj. : 2 µl
 Signal #1 Phase : ZB-MR1 Signal #2 Phase: ZB-MR2
 Signal #1 Info : 30Mx0.32mmx 0.50µ Signal #2 Info : 30M x 0.32mm x 0.25µm





#1 Tetrachloro-m-xylene

R.T.: 3.700 min
 Delta R.T.: 0.000 min
 Response: 760127664
 Conc: 100.74 ng/ml

Instrument :

ECD_O

Client Sample Id :

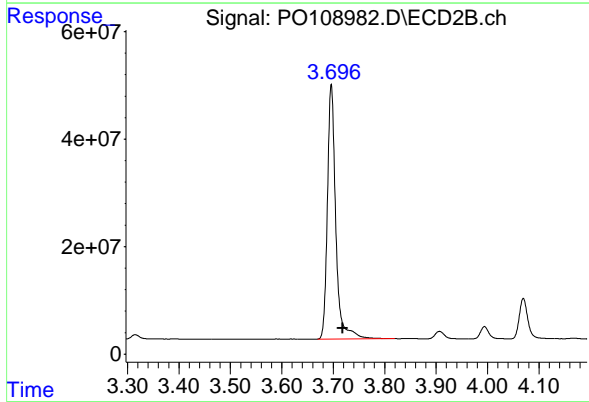
AR1660ICC1000

Manual Integrations

APPROVED

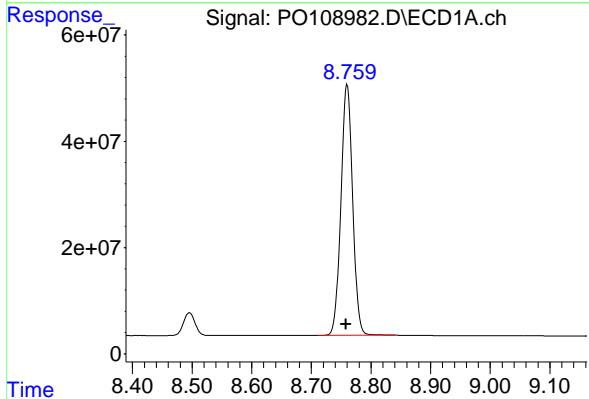
Reviewed By :Yogesh Patel 01/22/2025

Supervised By :Ankita Jodhani 01/22/2025



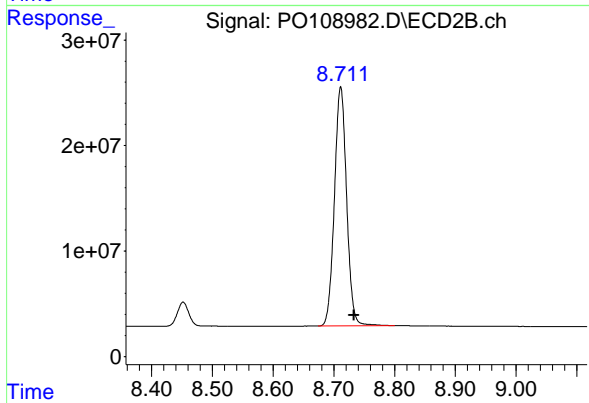
#1 Tetrachloro-m-xylene

R.T.: 3.696 min
 Delta R.T.: -0.022 min
 Response: 531574623
 Conc: 98.96 ng/ml



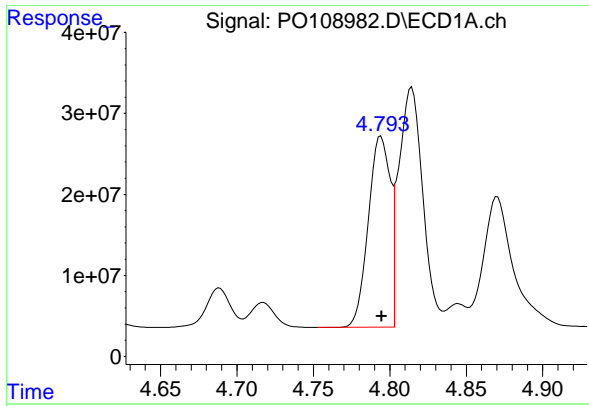
#2 Decachlorobiphenyl

R.T.: 8.760 min
 Delta R.T.: 0.002 min
 Response: 643434819
 Conc: 91.25 ng/ml



#2 Decachlorobiphenyl

R.T.: 8.711 min
 Delta R.T.: -0.022 min
 Response: 315654480
 Conc: 89.95 ng/ml



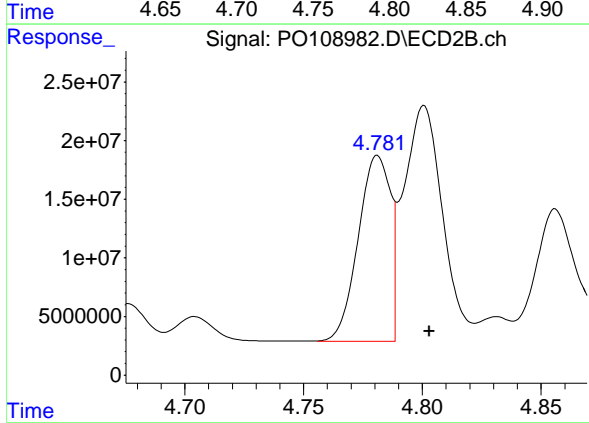
#3 AR-1016-1

R.T.: 4.794 min
 Delta R.T.: 0.000 min
 Response: 233065045
 Conc: 906.54 ng/ml

Instrument :
 ECD_O
 ClientSampleId :
 AR1660ICC1000

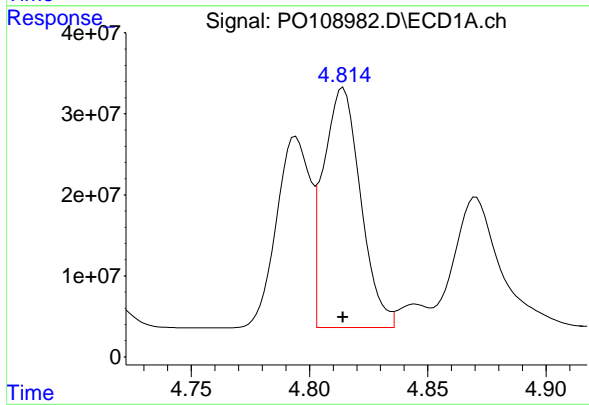
Manual Integrations
 APPROVED

Reviewed By :Yogesh Patel 01/22/2025
 Supervised By :Ankita Jodhani 01/22/2025



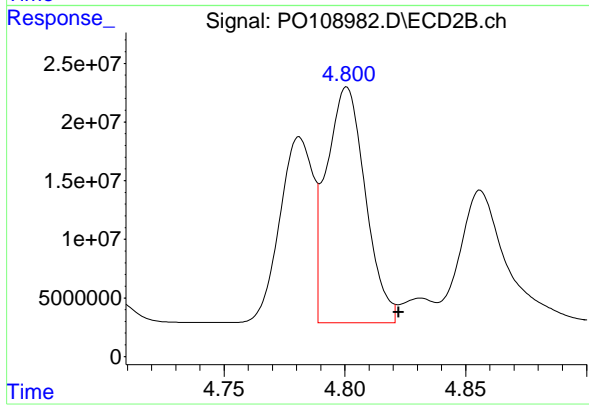
#3 AR-1016-1

R.T.: 4.781 min
 Delta R.T.: -0.022 min
 Response: 145518803
 Conc: 876.53 ng/ml m



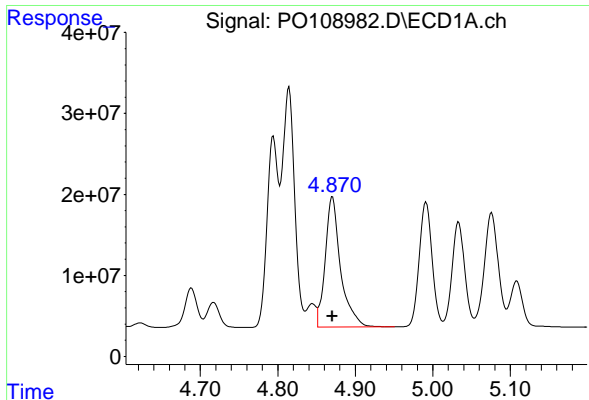
#4 AR-1016-2

R.T.: 4.814 min
 Delta R.T.: 0.000 min
 Response: 325363679
 Conc: 930.23 ng/ml



#4 AR-1016-2

R.T.: 4.800 min
 Delta R.T.: -0.022 min
 Response: 223129267
 Conc: 921.97 ng/ml m



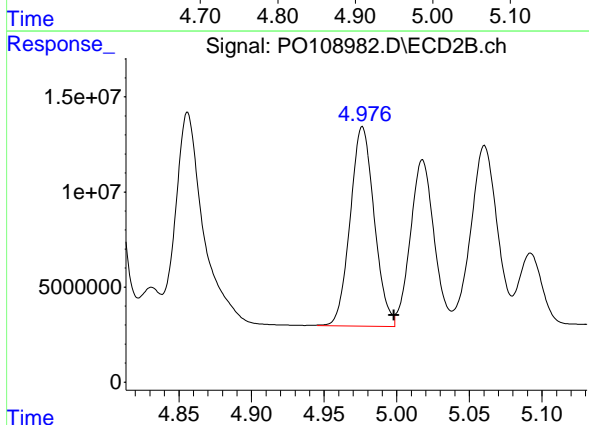
#5 AR-1016-3

R.T.: 4.870 min
 Delta R.T.: 0.000 min
 Response: 223049536
 Conc: 894.40 ng/ml

Instrument :
 ECD_O
 ClientSampleId :
 AR1660ICC1000

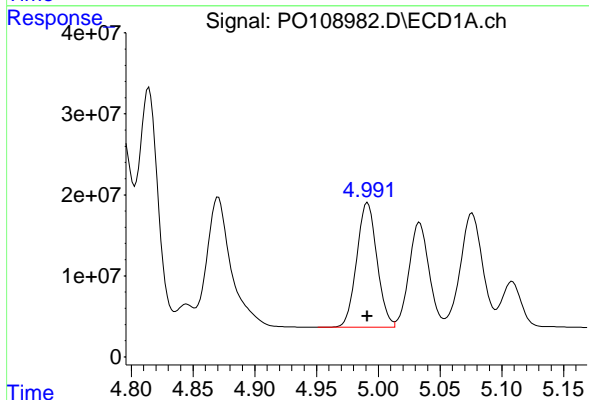
Manual Integrations
 APPROVED

Reviewed By :Yogesh Patel 01/22/2025
 Supervised By :Ankita Jodhani 01/22/2025



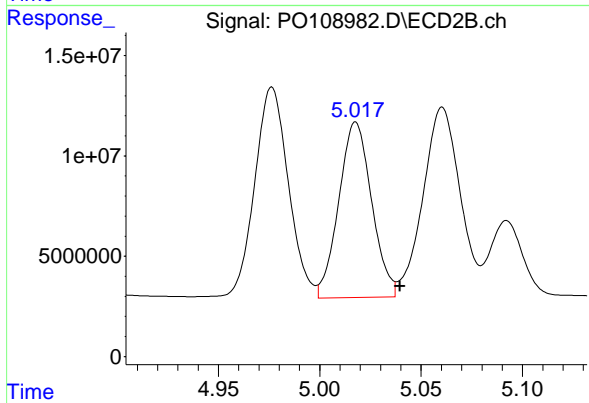
#5 AR-1016-3

R.T.: 4.976 min
 Delta R.T.: -0.022 min
 Response: 121270732
 Conc: 914.18 ng/ml m



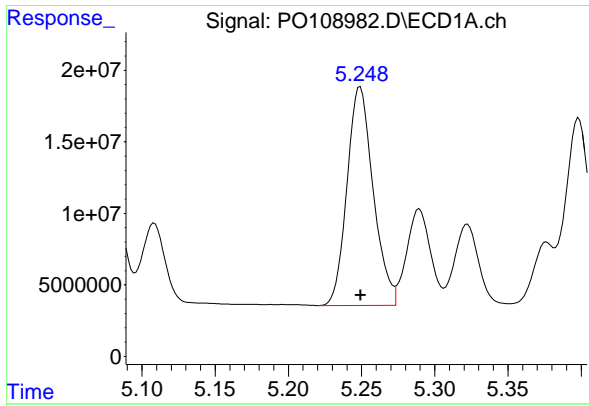
#6 AR-1016-4

R.T.: 4.991 min
 Delta R.T.: 0.000 min
 Response: 175974311
 Conc: 904.55 ng/ml



#6 AR-1016-4

R.T.: 5.017 min
 Delta R.T.: -0.022 min
 Response: 98703058
 Conc: 869.84 ng/ml m



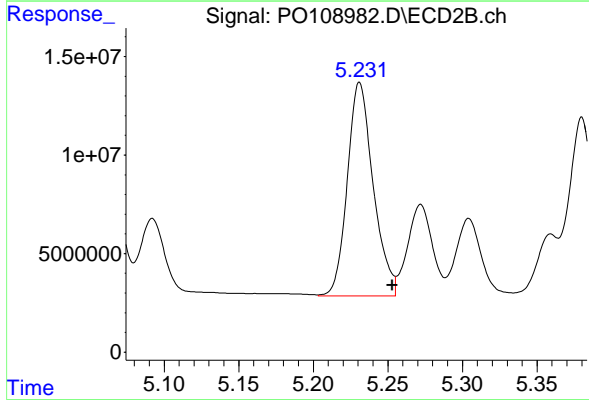
#7 AR-1016-5

R.T.: 5.249 min
 Delta R.T.: 0.000 min
 Response: 190134930
 Conc: 890.90 ng/ml

Instrument :
 ECD_O
 ClientSampleId :
 AR1660ICC1000

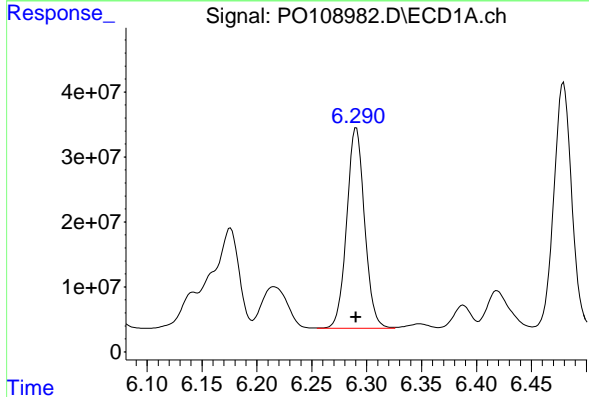
Manual Integrations
 APPROVED

Reviewed By :Yogesh Patel 01/22/2025
 Supervised By :Ankita Jodhani 01/22/2025



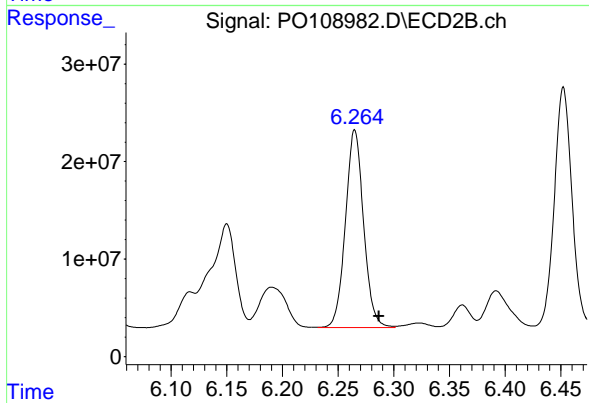
#7 AR-1016-5

R.T.: 5.231 min
 Delta R.T.: -0.022 min
 Response: 130939362
 Conc: 892.60 ng/ml m



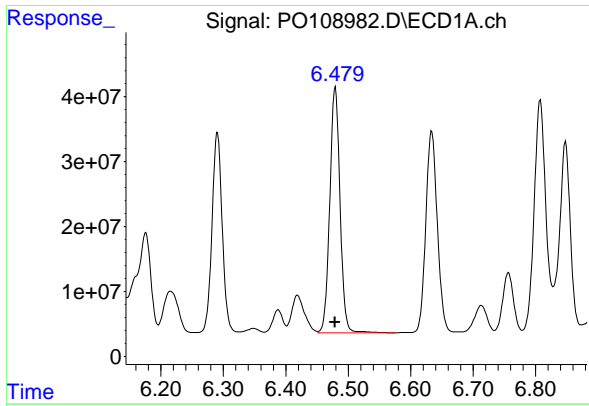
#31 AR-1260-1

R.T.: 6.290 min
 Delta R.T.: 0.000 min
 Response: 348800771
 Conc: 896.10 ng/ml



#31 AR-1260-1

R.T.: 6.265 min
 Delta R.T.: -0.021 min
 Response: 229857010
 Conc: 892.31 ng/ml



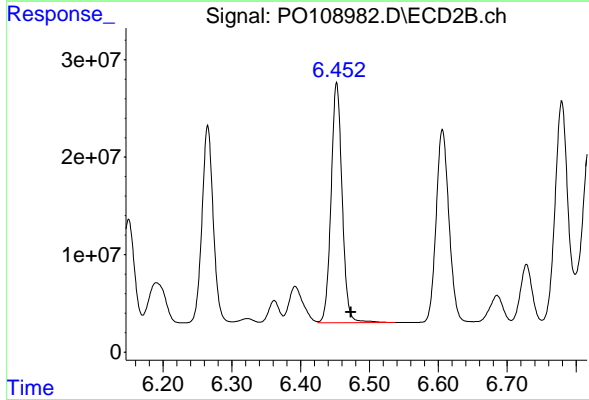
#32 AR-1260-2

R.T.: 6.479 min
 Delta R.T.: 0.000 min
 Response: 430525248
 Conc: 898.15 ng/ml

Instrument :
 ECD_O
 ClientSampleId :
 AR1660ICC1000

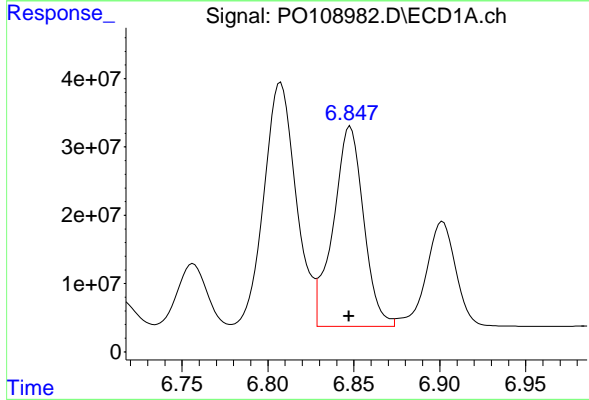
Manual Integrations
 APPROVED

Reviewed By :Yogesh Patel 01/22/2025
 Supervised By :Ankita Jodhani 01/22/2025



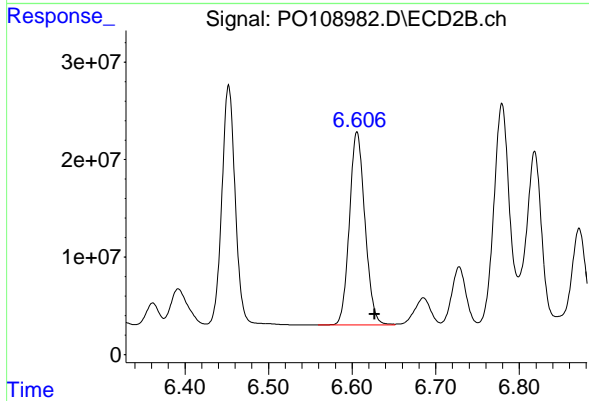
#32 AR-1260-2

R.T.: 6.452 min
 Delta R.T.: -0.021 min
 Response: 274616892
 Conc: 893.49 ng/ml



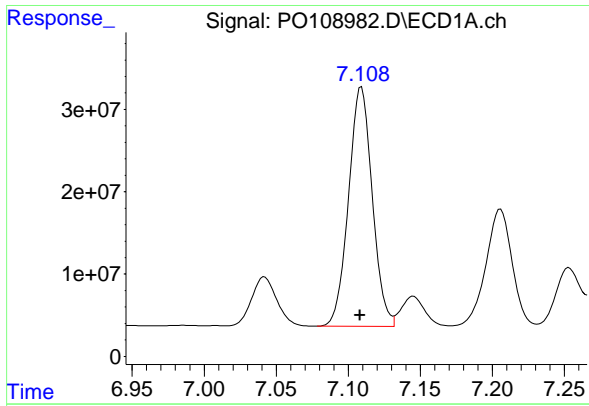
#33 AR-1260-3

R.T.: 6.848 min
 Delta R.T.: 0.000 min
 Response: 359859412
 Conc: 900.80 ng/ml



#33 AR-1260-3

R.T.: 6.606 min
 Delta R.T.: -0.021 min
 Response: 255547157
 Conc: 899.51 ng/ml



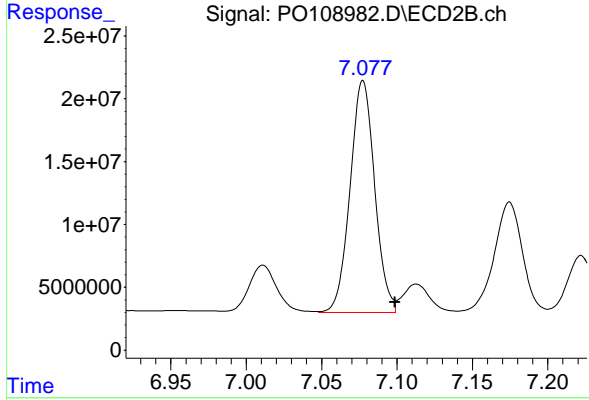
#34 AR-1260-4

R.T.: 7.109 min
 Delta R.T.: 0.001 min
 Response: 332481764
 Conc: 912.59 ng/ml

Instrument :
 ECD_O
 ClientSampleId :
 AR1660ICC1000

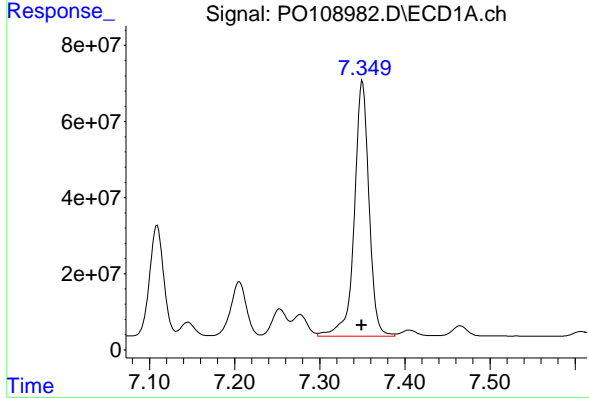
Manual Integrations
 APPROVED

Reviewed By :Yogesh Patel 01/22/2025
 Supervised By :Ankita Jodhani 01/22/2025



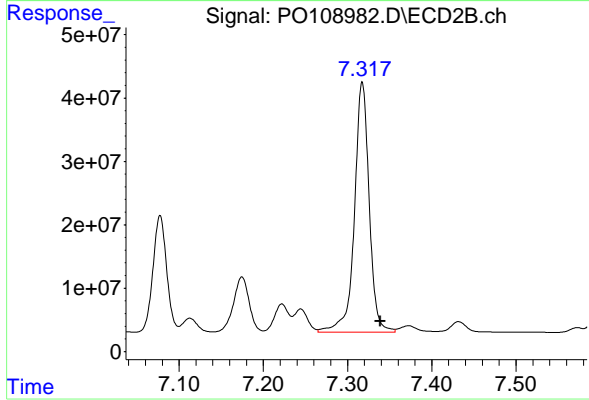
#34 AR-1260-4

R.T.: 7.077 min
 Delta R.T.: -0.022 min
 Response: 210034482
 Conc: 914.96 ng/ml m



#35 AR-1260-5

R.T.: 7.350 min
 Delta R.T.: 0.001 min
 Response: 803151986
 Conc: 953.35 ng/ml



#35 AR-1260-5

R.T.: 7.317 min
 Delta R.T.: -0.022 min
 Response: 481178354
 Conc: 951.78 ng/ml