

Data Path : Z:\pestpcbsrv\HPCHEM1\ECD_0\Data\P0012224\
 Data File : P0101203.D
 Signal(s) : Signal #1: ECD1A.ch Signal #2: ECD2B.ch
 Acq On : 22 Jan 2024 09:59
 Operator : YP/AJ
 Sample : I.BLK
 Misc :
 ALS Vial : 2 Sample Multiplier: 1

Instrument :
 ECD_0
 ClientSampleId :
 I.BLK

Integration File signal 1: autoint1.e
 Integration File signal 2: autoint2.e
 Quant Time: Jan 22 18:08:54 2024
 Quant Method : Z:\pestpcbsrv\HPCHEM1\ECD_0\methods\P0012224.M
 Quant Title : GC EXTRACTABLES
 QLast Update : Mon Jan 22 18:08:15 2024
 Response via : Initial Calibration
 Integrator: ChemStation

Volume Inj. : 2 µl
 Signal #1 Phase : ZB-MR2 Signal #2 Phase: ZB-MR2
 Signal #1 Info : 30Mx0.32mmx 0.50µ Signal #2 Info : 30M x 0.32mm x 0.25µm

Compound	RT#1	RT#2	Resp#1	Resp#2	ng/ml	ng/ml

System Monitoring Compounds						
1) SA Tetrachlo...	4.333	3.631	50315527	35795063	17.823	18.448
2) SA Decachlor...	10.060	8.677	25338497	23748272	18.028	18.702
Target Compounds						
3) L1 AR-1016-1	5.487	4.730	119663	537911	1.784	9.903 #
4) L1 AR-1016-2	5.524	4.730	180952	537911	1.940	7.724 #
5) L1 AR-1016-3	5.576	4.940	699781	28633	11.415	0.720 #
6) L1 AR-1016-4	5.679	4.969	35317	288143	0.714	7.443 #
7) L1 AR-1016-5	5.966	5.180	27064	30645	0.502	0.625
8) L2 AR-1221-1	4.521	3.836	65187	24497	2.192	1.127 #
9) L2 AR-1221-2	4.639	3.933	884200	581548	39.409	34.129
10) L2 AR-1221-3	4.690	4.004	65330	106366	1.024	2.188 #
11) L3 AR-1232-1	4.690	4.004	65330	106366	1.183	2.515 #
12) L3 AR-1232-2	5.242	4.730	92910	537911	2.735	14.535 #
13) L3 AR-1232-3	5.524	4.940	180952	28633	3.683	1.404 #
14) L3 AR-1232-4	5.688	5.000	18480	64887	0.723	2.976 #
15) L3 AR-1232-5	5.779	5.180	257984	30645	10.667	1.298 #
16) L4 AR-1242-1	5.487	4.730	119663	537911	2.116	11.680 #
17) L4 AR-1242-2	5.524	4.730	180952	537911	2.301	9.064 #
18) L4 AR-1242-3	5.576	4.940	699781	28633	13.719	0.857 #
19) L4 AR-1242-4	5.688	5.000	18480	64887	0.447	1.698 #
20) L4 AR-1242-5	6.420	5.531	28537	49014	0.785	1.234 #
21) L5 AR-1248-1	5.487	4.730	119663	537911	2.787	15.146 #
22) L5 AR-1248-2	5.779	4.969	257984	288143	3.453	5.203 #
23) L5 AR-1248-3	5.966	5.000	27064	64887	0.364	1.143 #
24) L5 AR-1248-4	6.395	5.180	17978	30645	0.272	0.464 #
25) L5 AR-1248-5	6.420	5.576	28537	126529	0.448	2.512 #
26) L6 AR-1254-1	6.353	5.531	86966	49014	0.993	0.507 #
27) L6 AR-1254-2	6.570	5.686	34889	105733	0.279	1.243 #
28) L6 AR-1254-3	6.943	6.107	410988	87015	3.594	0.704 #
29) L6 AR-1254-4	7.236	6.338	688819	89970	9.910	1.476 #
30) L6 AR-1254-5	7.656	6.768	246127	590695	2.976	5.838 #
31) L7 AR-1260-1	7.098	6.219	203540	33253	2.120	0.365 #
32) L7 AR-1260-2	7.346	6.411	108450	47638	1.142	0.491 #
33) L7 AR-1260-3	7.718	6.542	215677	430989	2.869	4.670 #
34) L7 AR-1260-4	7.923	7.051	255517	102291	3.300	1.374 #
35) L7 AR-1260-5	8.228f	7.252	252920	60873	1.824	0.436 #
36) L8 AR-1262-1	7.644	6.768	954771	590695	12.188	9.542
37) L8 AR-1262-2	8.228f	7.051	252920	102291	1.362	0.907 #
38) L8 AR-1262-3	8.582	7.568	325796	63354	2.479	0.756 #
39) L8 AR-1262-4	8.661	7.628	883832	78710	8.622	0.557 #
40) L8 AR-1262-5	9.307	8.125	42094	299926	0.687	5.076 #
41) L9 AR-1268-1	8.573	7.568	1264717	63354	5.649	0.309 #

Data Path : Z:\pestpcbsrv\HPCHEM1\ECD_0\Data\P0012224\
 Data File : P0101203.D
 Signal(s) : Signal #1: ECD1A.ch Signal #2: ECD2B.ch
 Acq On : 22 Jan 2024 09:59
 Operator : YP/AJ
 Sample : I.BLK
 Misc :
 ALS Vial : 2 Sample Multiplier: 1

Instrument :
 ECD_0
 ClientSampleId :
 I.BLK

Integration File signal 1: autoint1.e
 Integration File signal 2: autoint2.e
 Quant Time: Jan 22 18:08:54 2024
 Quant Method : Z:\pestpcbsrv\HPCHEM1\ECD_0\methods\P0012224.M
 Quant Title : GC EXTRACTABLES
 QLast Update : Mon Jan 22 18:08:15 2024
 Response via : Initial Calibration
 Integrator: ChemStation

Volume Inj. : 2 µl
 Signal #1 Phase : ZB-MR1 Signal #2 Phase: ZB-MR2
 Signal #1 Info : 30Mx0.32mmx 0.50µ Signal #2 Info : 30M x 0.32mm x 0.25µm

	Compound	RT#1	RT#2	Resp#1	Resp#2	ng/ml	ng/ml
42)	L9 AR-1268-2	8.661	7.628	883832	78710	4.470	0.428 #
43)	L9 AR-1268-3	8.898	7.839	173630	292445	0.981	1.699 #
44)	L9 AR-1268-4	9.329	8.125	30241	299926	0.497	4.978 #
45)	L9 AR-1268-5	9.731	8.421	175864	405053	0.342	0.884 #

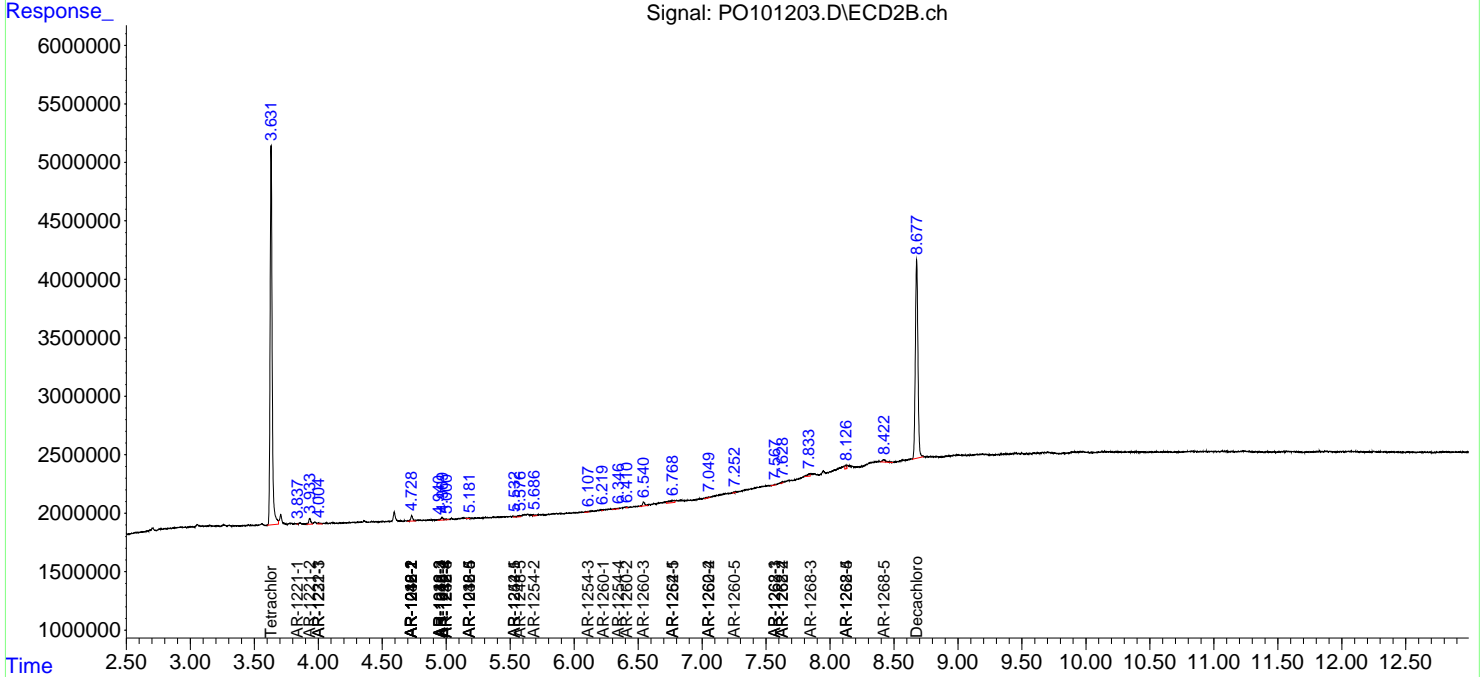
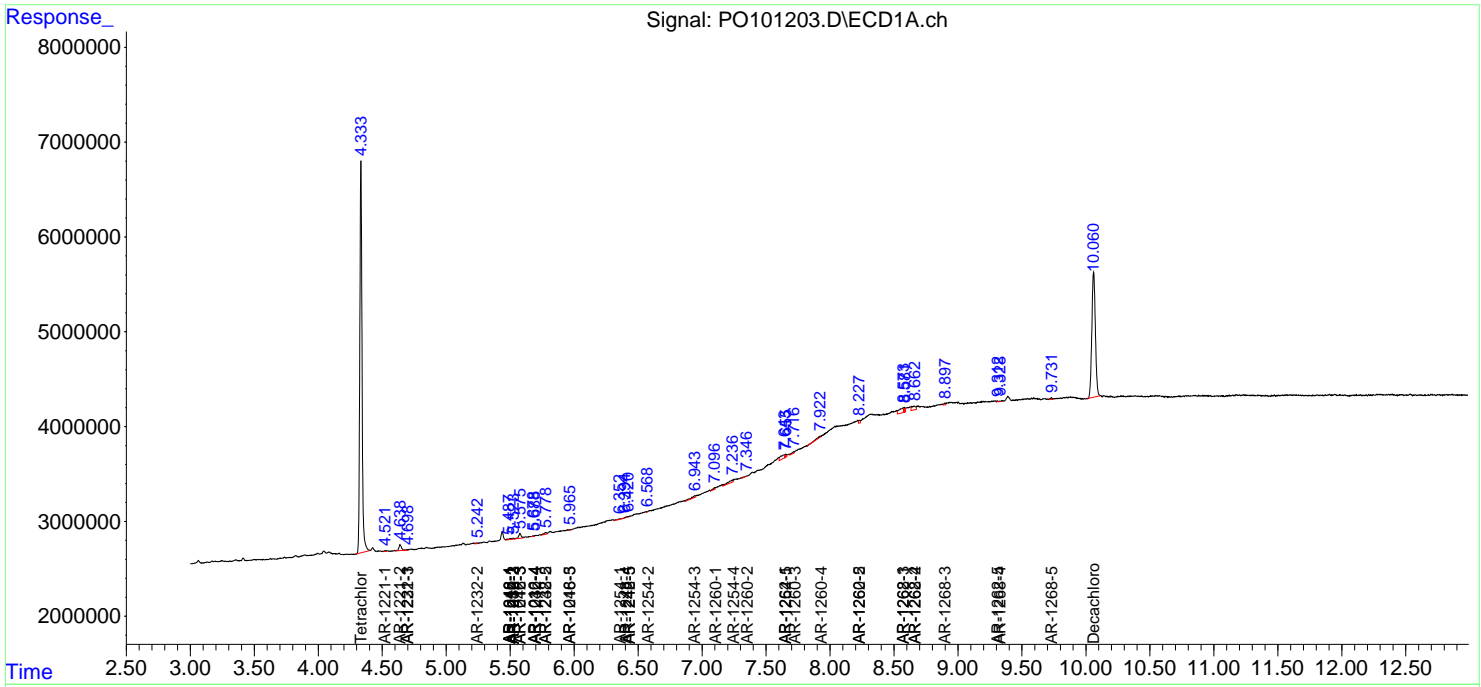
(f)=RT Delta > 1/2 Window (#)=Amounts differ by > 25% (m)=manual int.

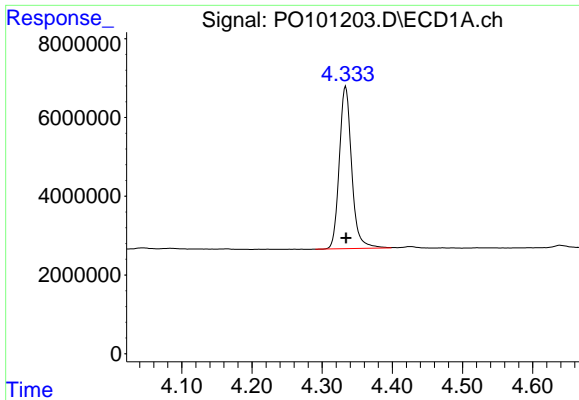
Data Path : Z:\pestpcbsrv\HPCHEM1\ECD_O\Data\PO012224\
 Data File : PO101203.D
 Signal(s) : Signal #1: ECD1A.ch Signal #2: ECD2B.ch
 Acq On : 22 Jan 2024 09:59
 Operator : YP/AJ
 Sample : I.BLK
 Misc :
 ALS Vial : 2 Sample Multiplier: 1

Instrument :
 ECD_O
 ClientSampleId :
 I.BLK

Integration File signal 1: autoint1.e
 Integration File signal 2: autoint2.e
 Quant Time: Jan 22 18:08:54 2024
 Quant Method : Z:\pestpcbsrv\HPCHEM1\ECD_O\methods\PO012224.M
 Quant Title : GC EXTRACTABLES
 QLast Update : Mon Jan 22 18:08:15 2024
 Response via : Initial Calibration
 Integrator: ChemStation

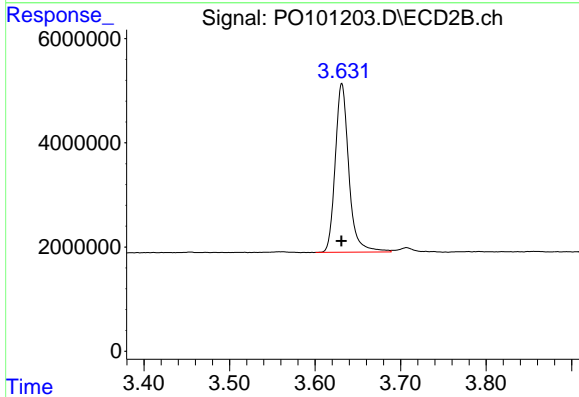
Volume Inj. : 2 µl
 Signal #1 Phase : ZB-MR1 Signal #2 Phase: ZB-MR2
 Signal #1 Info : 30Mx0.32mmx 0.50µ Signal #2 Info : 30M x 0.32mm x 0.25µm



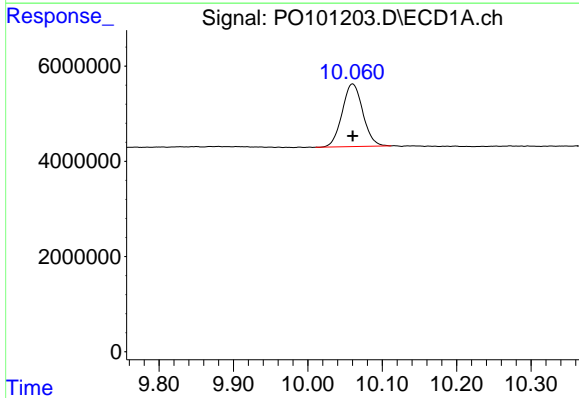


#1 Tetrachloro-m-xylene
 R.T.: 4.333 min
 Delta R.T.: 0.000 min
 Response: 50315527
 Conc: 17.82 ng/ml

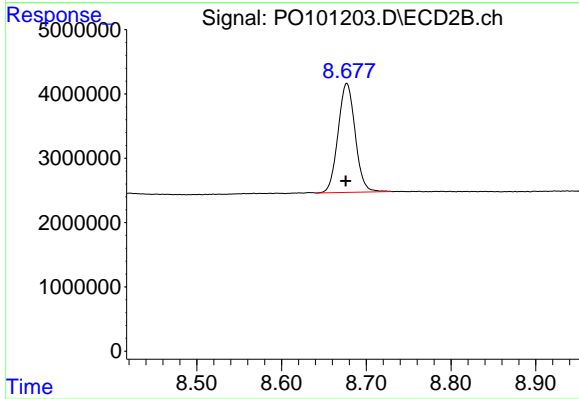
Instrument :
 ECD_O
 ClientSampleId :
 I.BLK



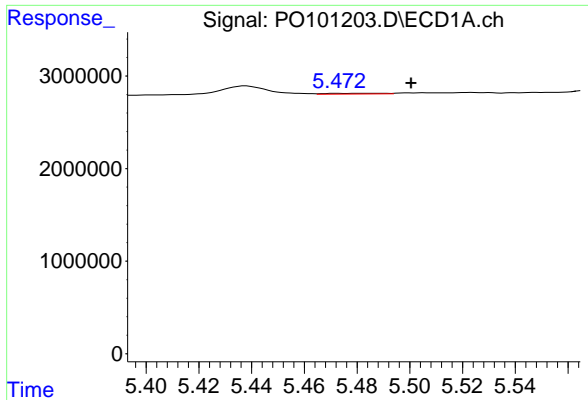
#1 Tetrachloro-m-xylene
 R.T.: 3.631 min
 Delta R.T.: 0.000 min
 Response: 35795063
 Conc: 18.45 ng/ml



#2 Decachlorobiphenyl
 R.T.: 10.060 min
 Delta R.T.: 0.000 min
 Response: 25338497
 Conc: 18.03 ng/ml



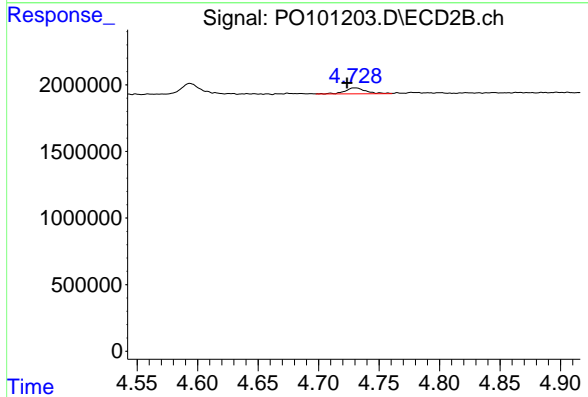
#2 Decachlorobiphenyl
 R.T.: 8.677 min
 Delta R.T.: 0.001 min
 Response: 23748272
 Conc: 18.70 ng/ml



#3 AR-1016-1

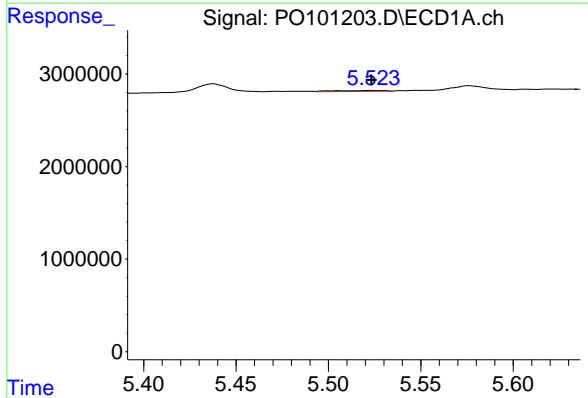
R.T.: 5.487 min
 Delta R.T.: -0.013 min
 Response: 119663
 Conc: 1.78 ng/ml

Instrument :
 ECD_O
 ClientSampleId :
 I.BLK



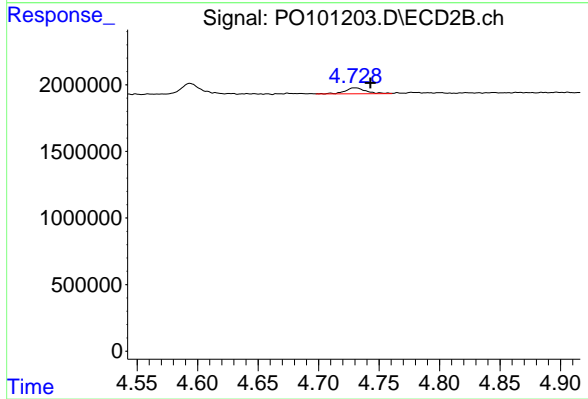
#3 AR-1016-1

R.T.: 4.730 min
 Delta R.T.: 0.006 min
 Response: 537911
 Conc: 9.90 ng/ml



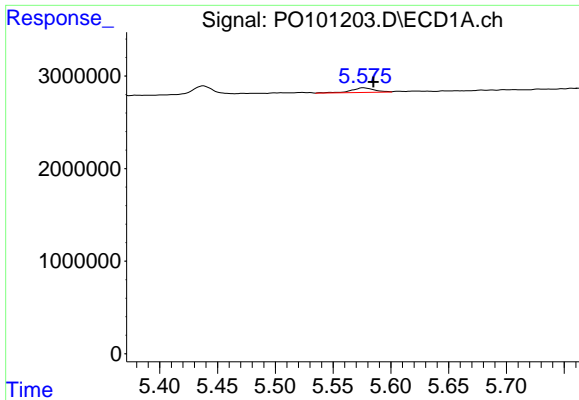
#4 AR-1016-2

R.T.: 5.524 min
 Delta R.T.: 0.000 min
 Response: 180952
 Conc: 1.94 ng/ml



#4 AR-1016-2

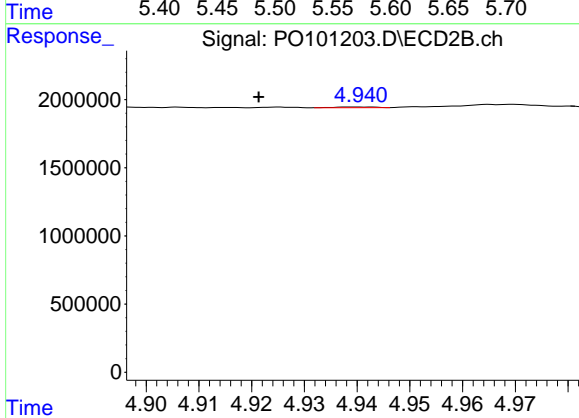
R.T.: 4.730 min
 Delta R.T.: -0.013 min
 Response: 537911
 Conc: 7.72 ng/ml



#5 AR-1016-3

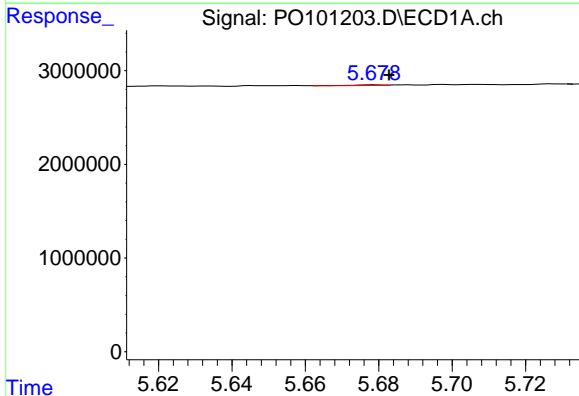
R.T.: 5.576 min
 Delta R.T.: -0.009 min
 Response: 699781
 Conc: 11.42 ng/ml

Instrument :
 ECD_O
 ClientSampleId :
 I.BLK



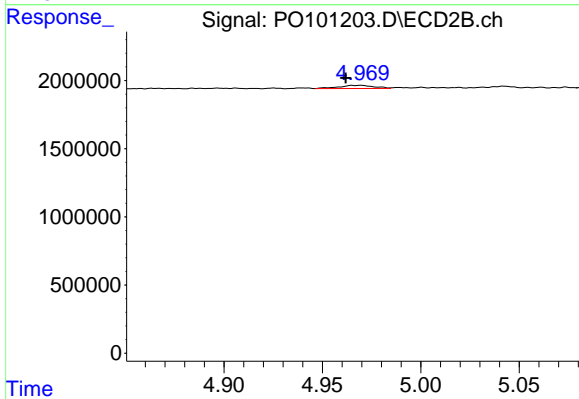
#5 AR-1016-3

R.T.: 4.940 min
 Delta R.T.: 0.019 min
 Response: 28633
 Conc: 0.72 ng/ml



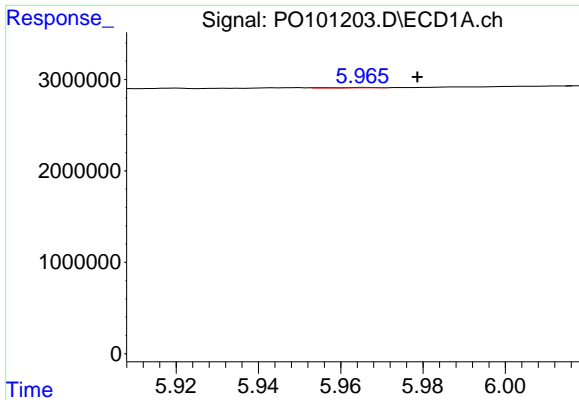
#6 AR-1016-4

R.T.: 5.679 min
 Delta R.T.: -0.004 min
 Response: 35317
 Conc: 0.71 ng/ml



#6 AR-1016-4

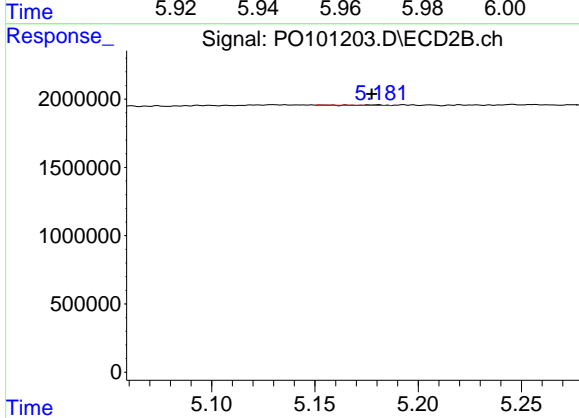
R.T.: 4.969 min
 Delta R.T.: 0.007 min
 Response: 288143
 Conc: 7.44 ng/ml



#7 AR-1016-5

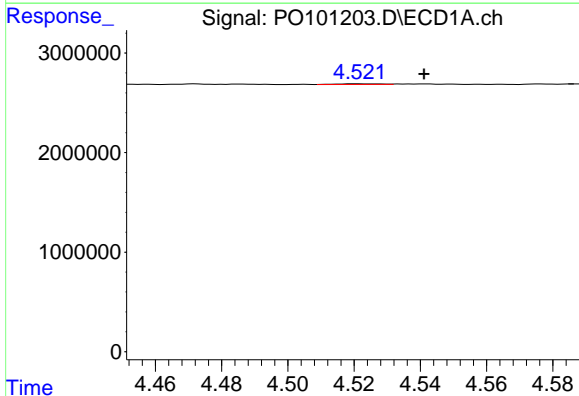
R.T.: 5.966 min
 Delta R.T.: -0.012 min
 Response: 27064
 Conc: 0.50 ng/ml

Instrument :
 ECD_O
 ClientSampleId :
 I.BLK



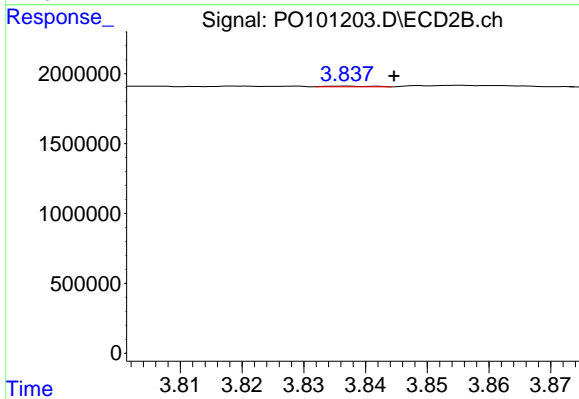
#7 AR-1016-5

R.T.: 5.180 min
 Delta R.T.: 0.003 min
 Response: 30645
 Conc: 0.62 ng/ml



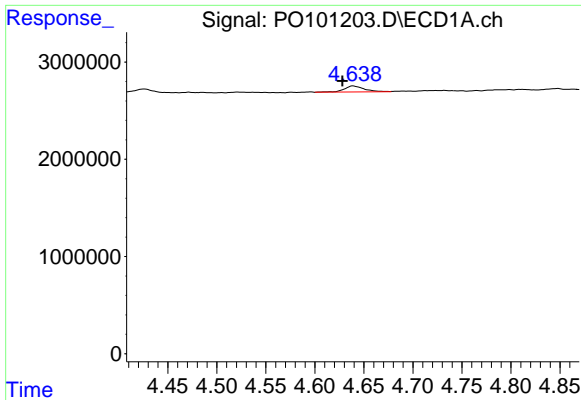
#8 AR-1221-1

R.T.: 4.521 min
 Delta R.T.: -0.020 min
 Response: 65187
 Conc: 2.19 ng/ml



#8 AR-1221-1

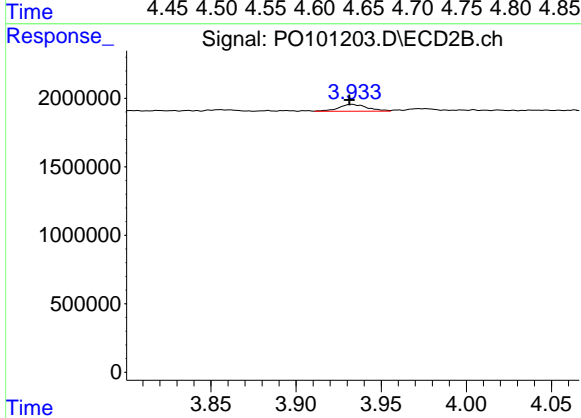
R.T.: 3.836 min
 Delta R.T.: -0.008 min
 Response: 24497
 Conc: 1.13 ng/ml



#9 AR-1221-2

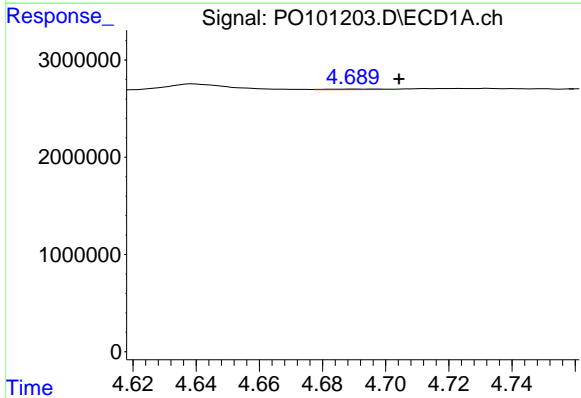
R.T.: 4.639 min
 Delta R.T.: 0.011 min
 Response: 884200
 Conc: 39.41 ng/ml

Instrument :
 ECD_O
 ClientSampleId :
 I.BLK



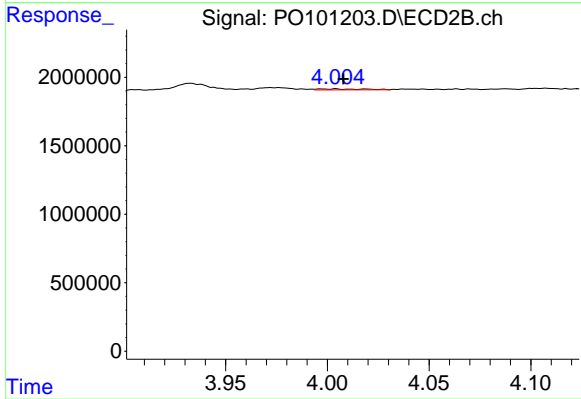
#9 AR-1221-2

R.T.: 3.933 min
 Delta R.T.: 0.001 min
 Response: 581548
 Conc: 34.13 ng/ml



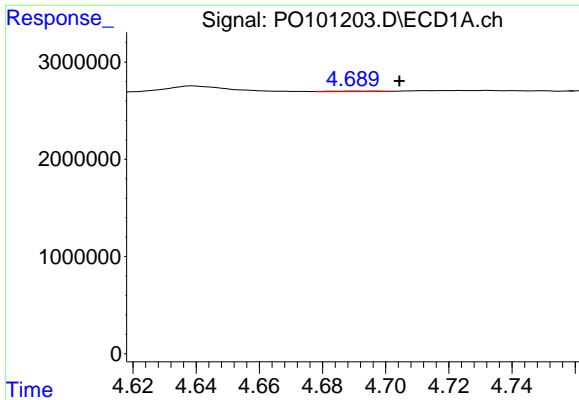
#10 AR-1221-3

R.T.: 4.690 min
 Delta R.T.: -0.014 min
 Response: 65330
 Conc: 1.02 ng/ml



#10 AR-1221-3

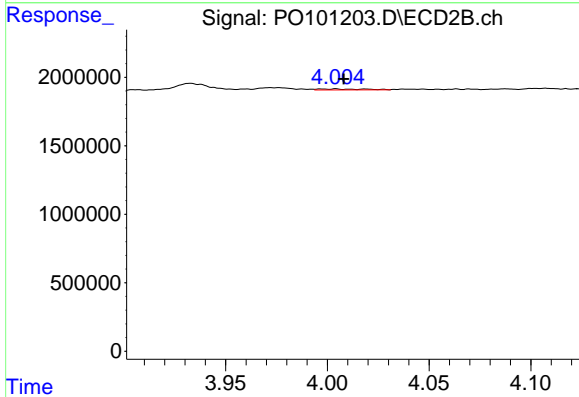
R.T.: 4.004 min
 Delta R.T.: -0.004 min
 Response: 106366
 Conc: 2.19 ng/ml



#11 AR-1232-1

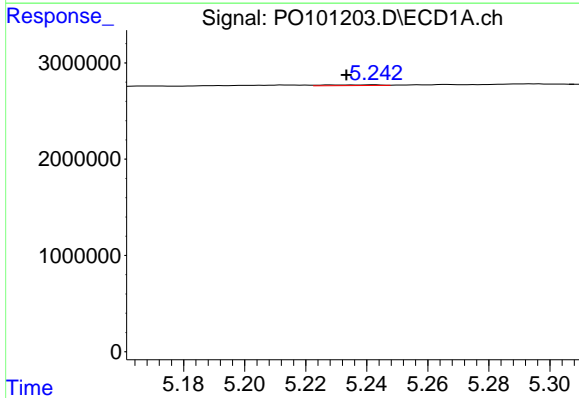
R.T.: 4.690 min
 Delta R.T.: -0.014 min
 Response: 65330
 Conc: 1.18 ng/ml

Instrument :
 ECD_O
 ClientSampleId :
 I.BLK



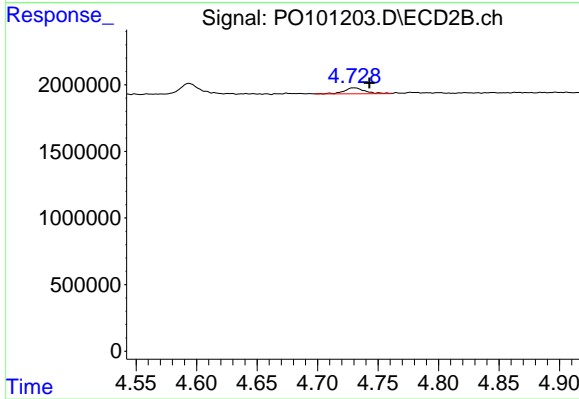
#11 AR-1232-1

R.T.: 4.004 min
 Delta R.T.: -0.004 min
 Response: 106366
 Conc: 2.52 ng/ml



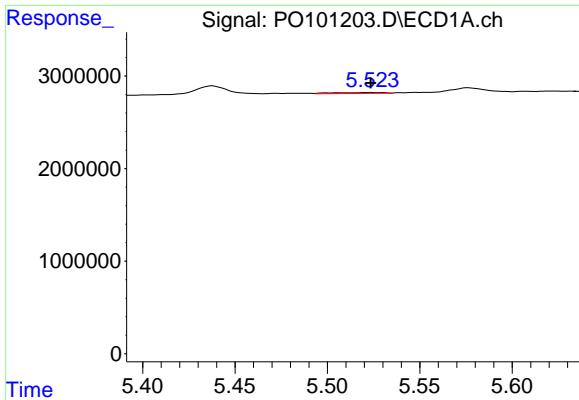
#12 AR-1232-2

R.T.: 5.242 min
 Delta R.T.: 0.009 min
 Response: 92910
 Conc: 2.74 ng/ml



#12 AR-1232-2

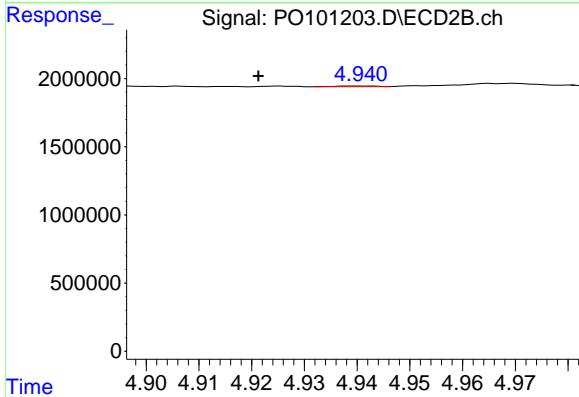
R.T.: 4.730 min
 Delta R.T.: -0.013 min
 Response: 537911
 Conc: 14.53 ng/ml



#13 AR-1232-3

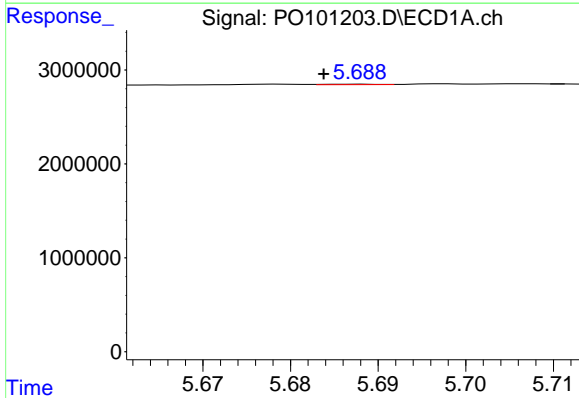
R.T.: 5.524 min
 Delta R.T.: 0.000 min
 Response: 180952
 Conc: 3.68 ng/ml

Instrument :
 ECD_O
 ClientSampleId :
 I.BLK



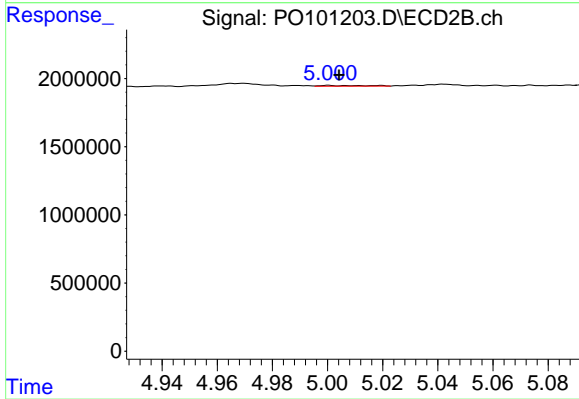
#13 AR-1232-3

R.T.: 4.940 min
 Delta R.T.: 0.019 min
 Response: 28633
 Conc: 1.40 ng/ml



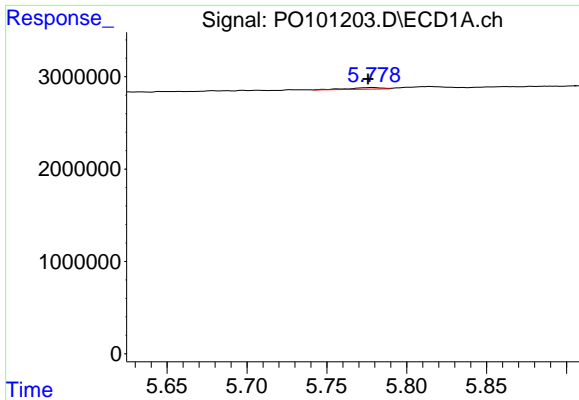
#14 AR-1232-4

R.T.: 5.688 min
 Delta R.T.: 0.004 min
 Response: 18480
 Conc: 0.72 ng/ml



#14 AR-1232-4

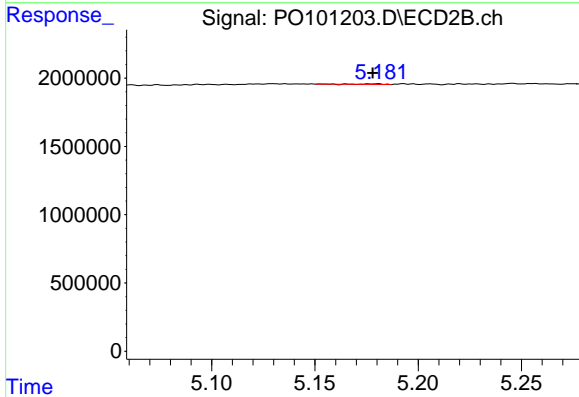
R.T.: 5.000 min
 Delta R.T.: -0.004 min
 Response: 64887
 Conc: 2.98 ng/ml



#15 AR-1232-5

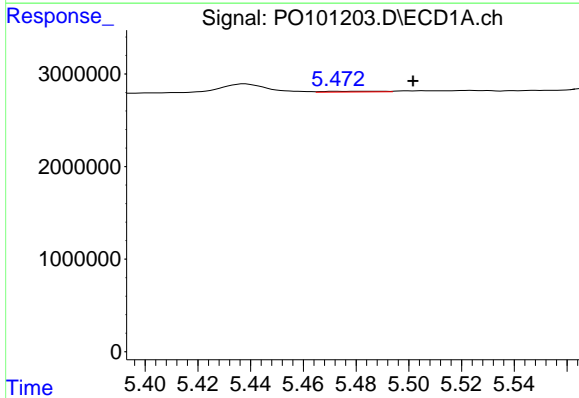
R.T.: 5.779 min
 Delta R.T.: 0.003 min
 Response: 257984
 Conc: 10.67 ng/ml

Instrument :
 ECD_O
 ClientSampleId :
 I.BLK



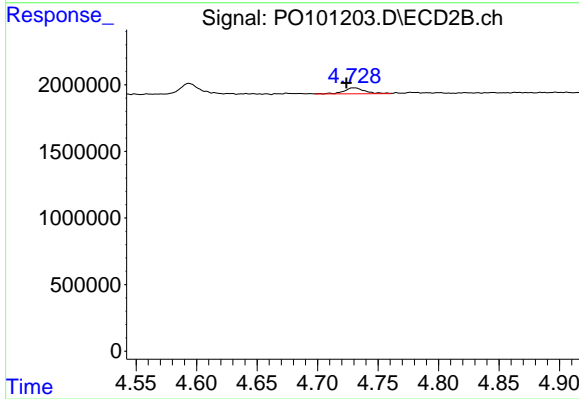
#15 AR-1232-5

R.T.: 5.180 min
 Delta R.T.: 0.002 min
 Response: 30645
 Conc: 1.30 ng/ml



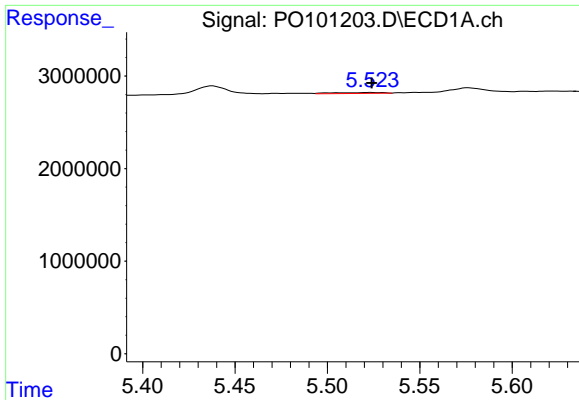
#16 AR-1242-1

R.T.: 5.487 min
 Delta R.T.: -0.014 min
 Response: 119663
 Conc: 2.12 ng/ml



#16 AR-1242-1

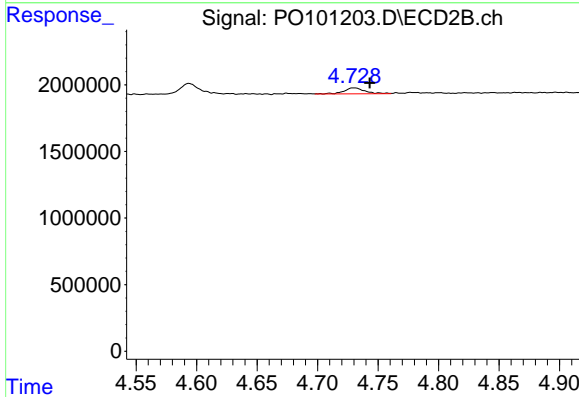
R.T.: 4.730 min
 Delta R.T.: 0.006 min
 Response: 537911
 Conc: 11.68 ng/ml



#17 AR-1242-2

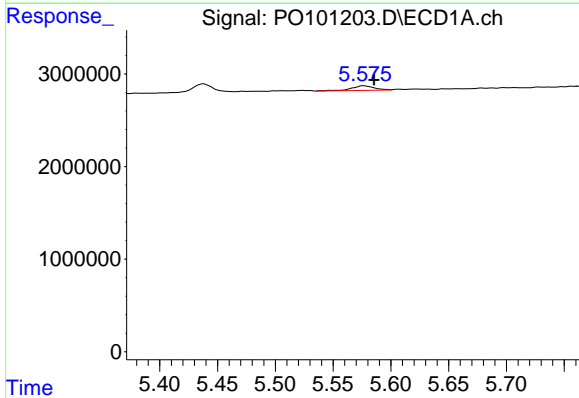
R.T.: 5.524 min
 Delta R.T.: 0.000 min
 Response: 180952
 Conc: 2.30 ng/ml

Instrument :
 ECD_O
 ClientSampleId :
 I.BLK



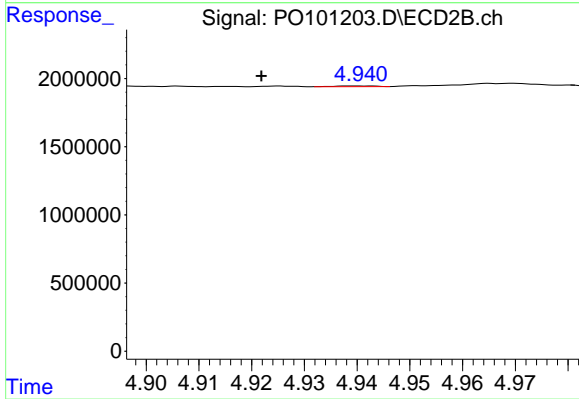
#17 AR-1242-2

R.T.: 4.730 min
 Delta R.T.: -0.013 min
 Response: 537911
 Conc: 9.06 ng/ml



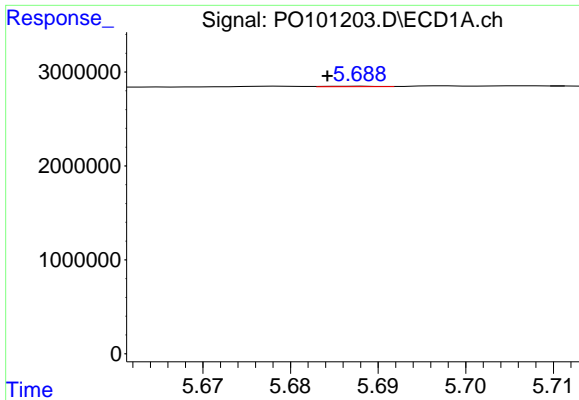
#18 AR-1242-3

R.T.: 5.576 min
 Delta R.T.: -0.009 min
 Response: 699781
 Conc: 13.72 ng/ml



#18 AR-1242-3

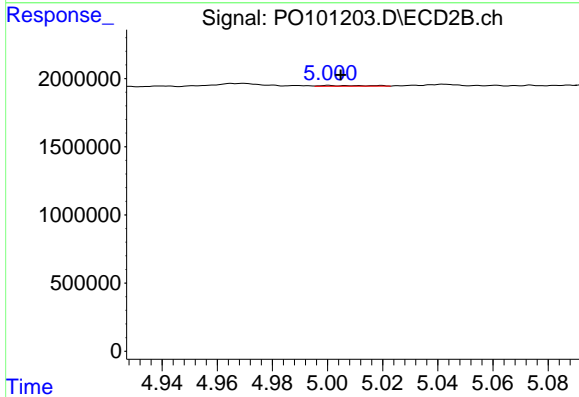
R.T.: 4.940 min
 Delta R.T.: 0.018 min
 Response: 28633
 Conc: 0.86 ng/ml



#19 AR-1242-4

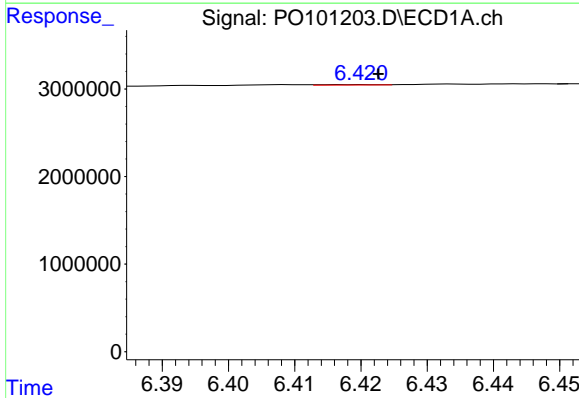
R.T.: 5.688 min
 Delta R.T.: 0.004 min
 Response: 18480
 Conc: 0.45 ng/ml

Instrument :
 ECD_O
 ClientSampleId :
 I.BLK



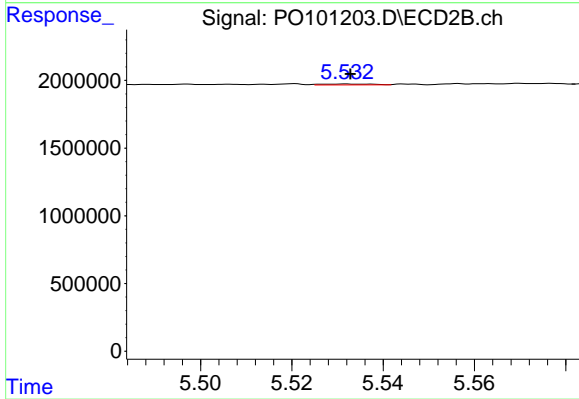
#19 AR-1242-4

R.T.: 5.000 min
 Delta R.T.: -0.005 min
 Response: 64887
 Conc: 1.70 ng/ml



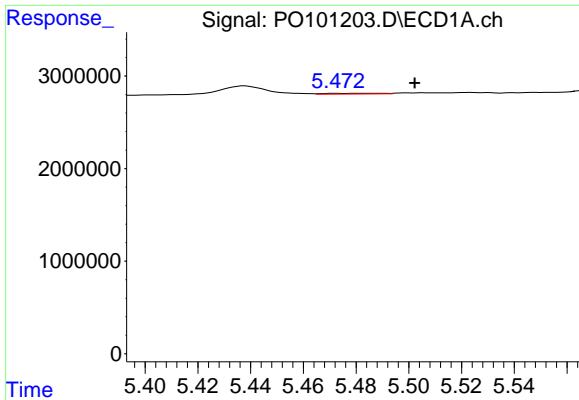
#20 AR-1242-5

R.T.: 6.420 min
 Delta R.T.: -0.002 min
 Response: 28537
 Conc: 0.79 ng/ml



#20 AR-1242-5

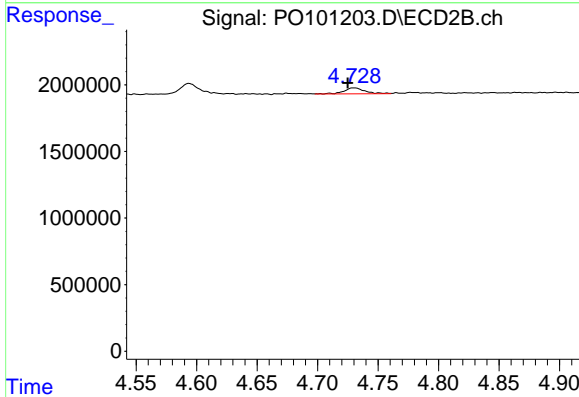
R.T.: 5.531 min
 Delta R.T.: -0.001 min
 Response: 49014
 Conc: 1.23 ng/ml



#21 AR-1248-1

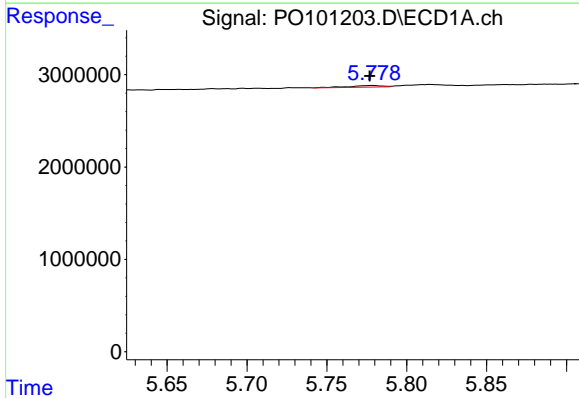
R.T.: 5.487 min
 Delta R.T.: -0.015 min
 Response: 119663
 Conc: 2.79 ng/ml

Instrument :
 ECD_O
 ClientSampleId :
 I.BLK



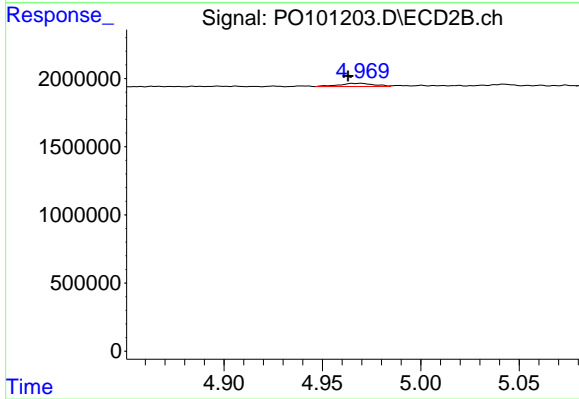
#21 AR-1248-1

R.T.: 4.730 min
 Delta R.T.: 0.005 min
 Response: 537911
 Conc: 15.15 ng/ml



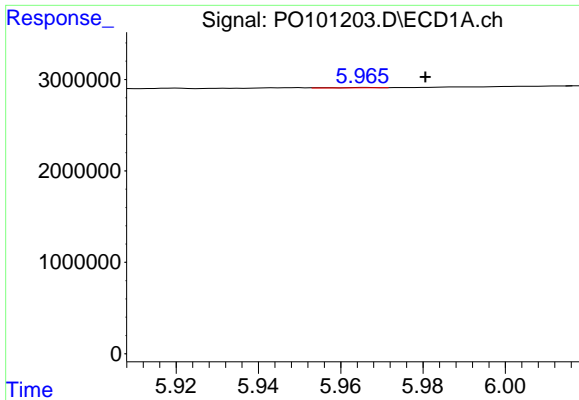
#22 AR-1248-2

R.T.: 5.779 min
 Delta R.T.: 0.002 min
 Response: 257984
 Conc: 3.45 ng/ml



#22 AR-1248-2

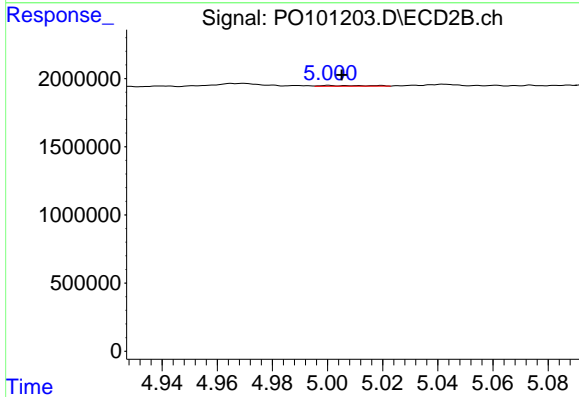
R.T.: 4.969 min
 Delta R.T.: 0.006 min
 Response: 288143
 Conc: 5.20 ng/ml



#23 AR-1248-3

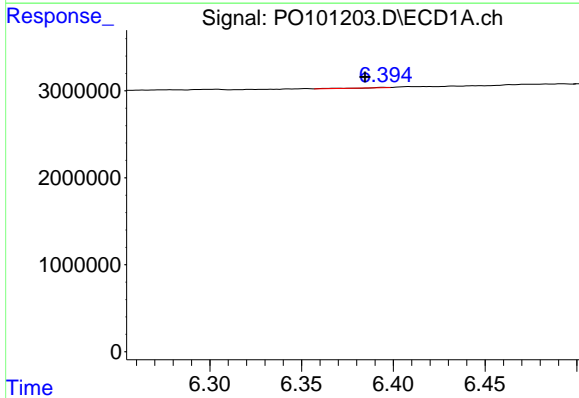
R.T.: 5.966 min
 Delta R.T.: -0.014 min
 Response: 27064
 Conc: 0.36 ng/ml

Instrument :
 ECD_O
 ClientSampleId :
 I.BLK



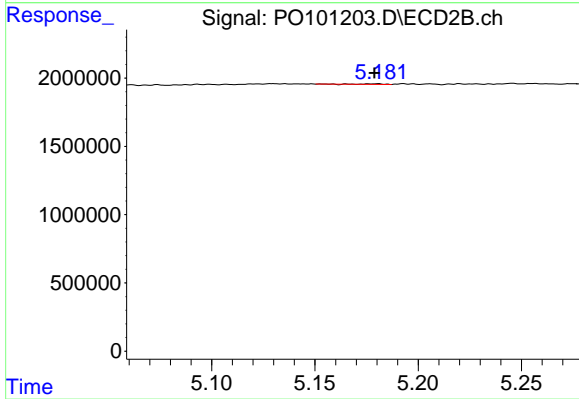
#23 AR-1248-3

R.T.: 5.000 min
 Delta R.T.: -0.005 min
 Response: 64887
 Conc: 1.14 ng/ml



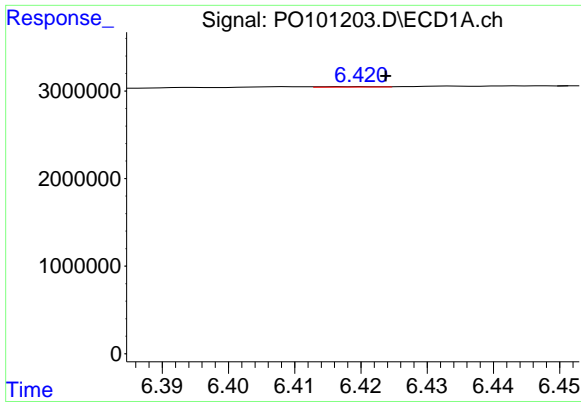
#24 AR-1248-4

R.T.: 6.395 min
 Delta R.T.: 0.010 min
 Response: 17978
 Conc: 0.27 ng/ml



#24 AR-1248-4

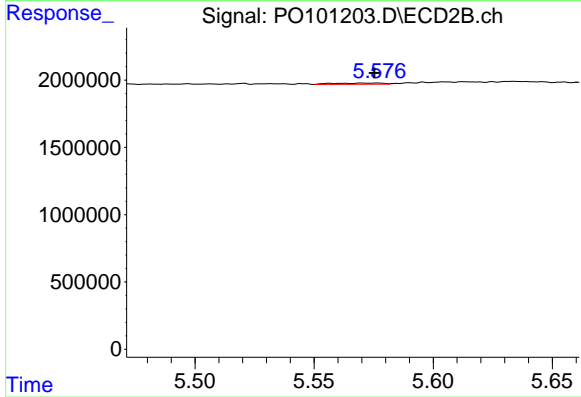
R.T.: 5.180 min
 Delta R.T.: 0.001 min
 Response: 30645
 Conc: 0.46 ng/ml



#25 AR-1248-5

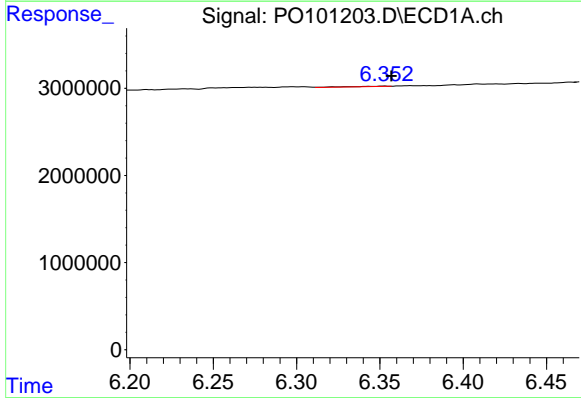
R.T.: 6.420 min
 Delta R.T.: -0.003 min
 Response: 28537
 Conc: 0.45 ng/ml

Instrument :
 ECD_O
 ClientSampleId :
 I.BLK



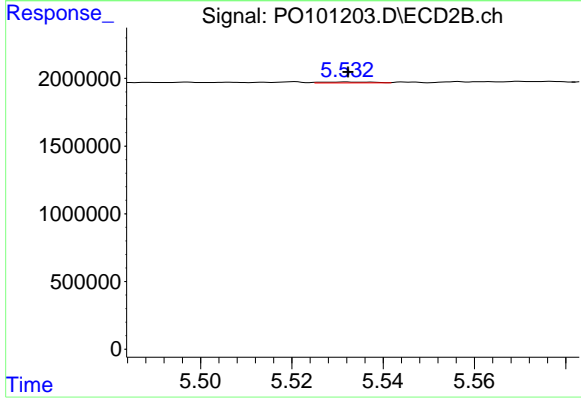
#25 AR-1248-5

R.T.: 5.576 min
 Delta R.T.: 0.001 min
 Response: 126529
 Conc: 2.51 ng/ml



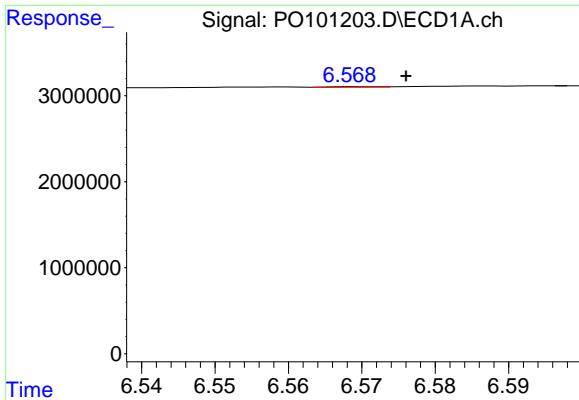
#26 AR-1254-1

R.T.: 6.353 min
 Delta R.T.: -0.004 min
 Response: 86966
 Conc: 0.99 ng/ml



#26 AR-1254-1

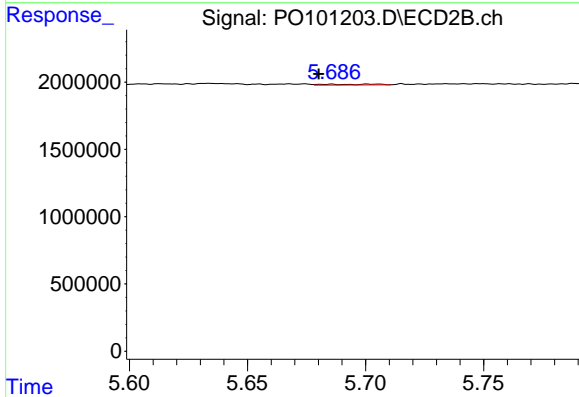
R.T.: 5.531 min
 Delta R.T.: 0.000 min
 Response: 49014
 Conc: 0.51 ng/ml



#27 AR-1254-2

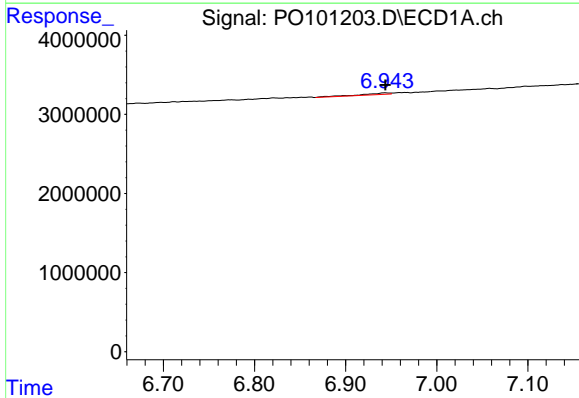
R.T.: 6.570 min
 Delta R.T.: -0.006 min
 Response: 34889
 Conc: 0.28 ng/ml

Instrument :
 ECD_O
 ClientSampleId :
 I.BLK



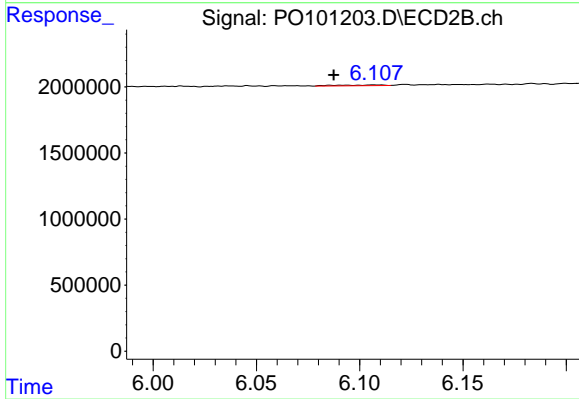
#27 AR-1254-2

R.T.: 5.686 min
 Delta R.T.: 0.005 min
 Response: 105733
 Conc: 1.24 ng/ml



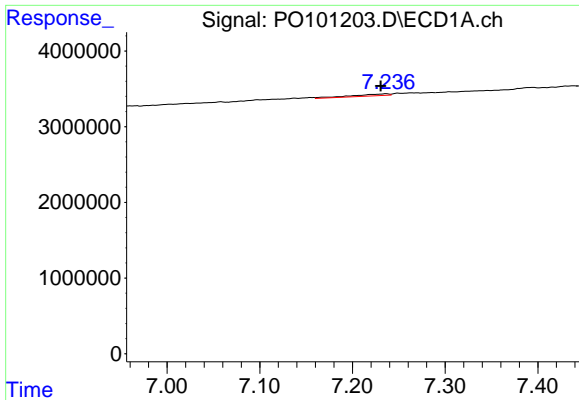
#28 AR-1254-3

R.T.: 6.943 min
 Delta R.T.: 0.000 min
 Response: 410988
 Conc: 3.59 ng/ml



#28 AR-1254-3

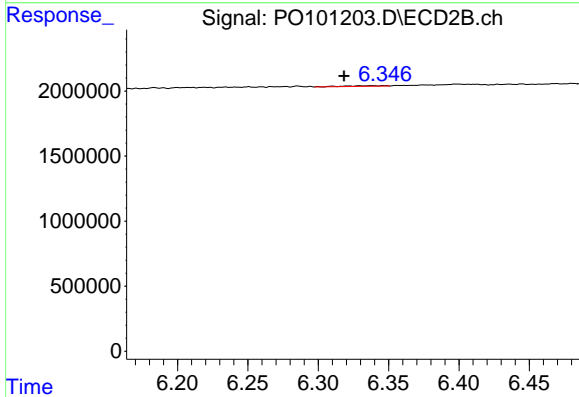
R.T.: 6.107 min
 Delta R.T.: 0.019 min
 Response: 87015
 Conc: 0.70 ng/ml



#29 AR-1254-4

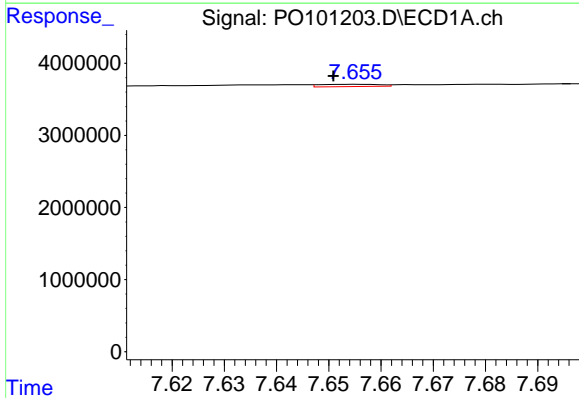
R.T.: 7.236 min
 Delta R.T.: 0.006 min
 Response: 688819
 Conc: 9.91 ng/ml

Instrument :
 ECD_O
 ClientSampleId :
 I.BLK



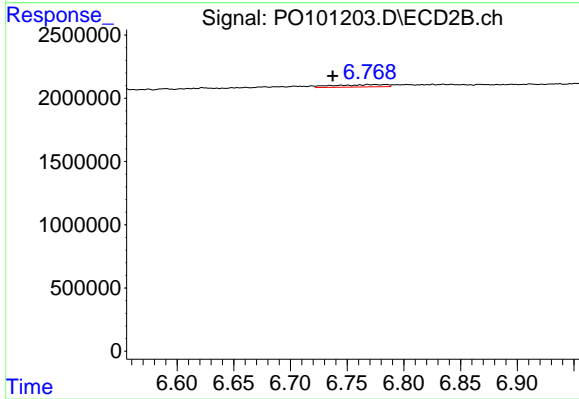
#29 AR-1254-4

R.T.: 6.338 min
 Delta R.T.: 0.020 min
 Response: 89970
 Conc: 1.48 ng/ml



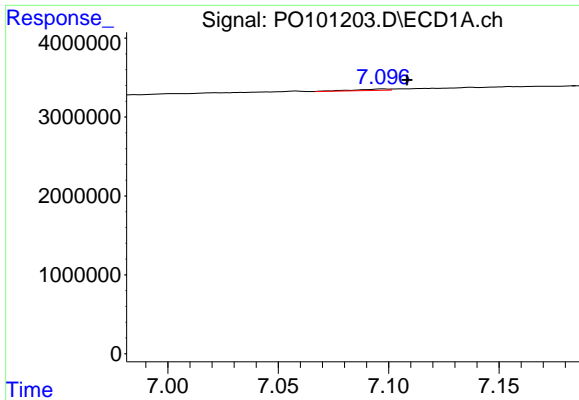
#30 AR-1254-5

R.T.: 7.656 min
 Delta R.T.: 0.005 min
 Response: 246127
 Conc: 2.98 ng/ml



#30 AR-1254-5

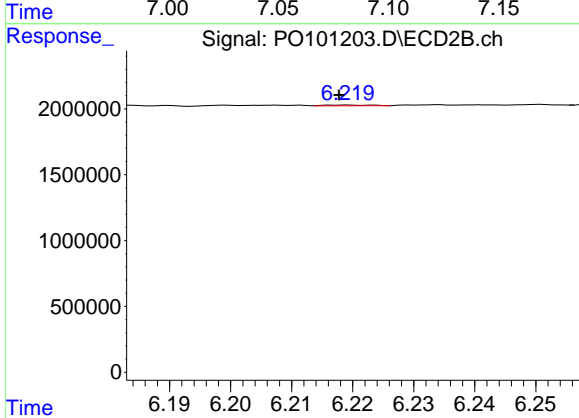
R.T.: 6.768 min
 Delta R.T.: 0.031 min
 Response: 590695
 Conc: 5.84 ng/ml



#31 AR-1260-1

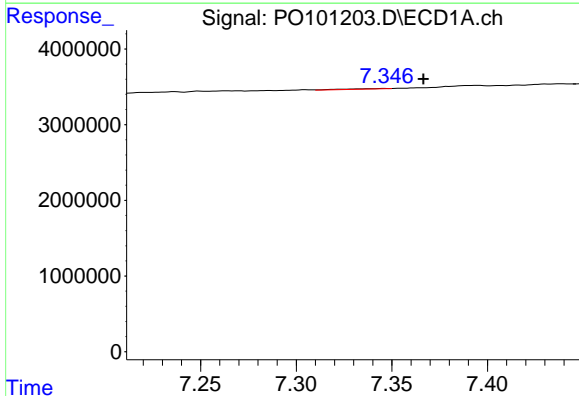
R.T.: 7.098 min
 Delta R.T.: -0.011 min
 Response: 203540
 Conc: 2.12 ng/ml

Instrument :
 ECD_O
 ClientSampleId :
 I.BLK



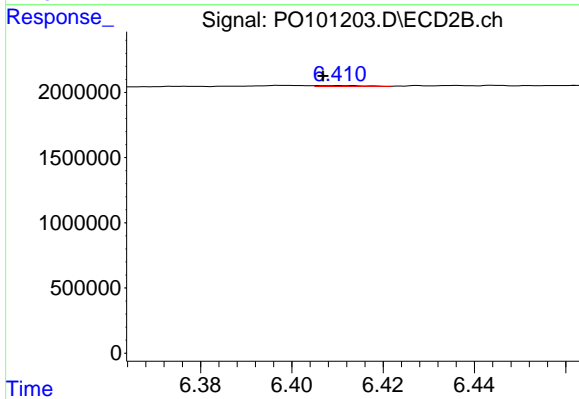
#31 AR-1260-1

R.T.: 6.219 min
 Delta R.T.: 0.001 min
 Response: 33253
 Conc: 0.36 ng/ml



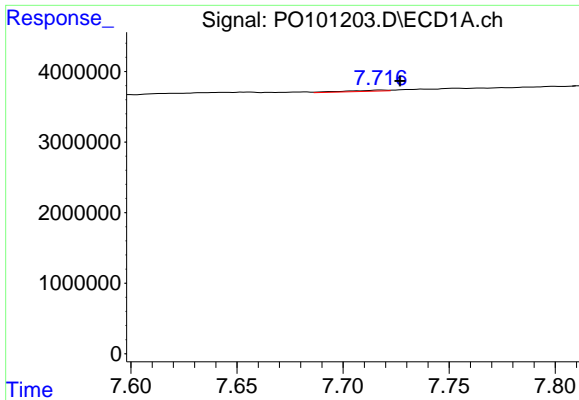
#32 AR-1260-2

R.T.: 7.346 min
 Delta R.T.: -0.020 min
 Response: 108450
 Conc: 1.14 ng/ml



#32 AR-1260-2

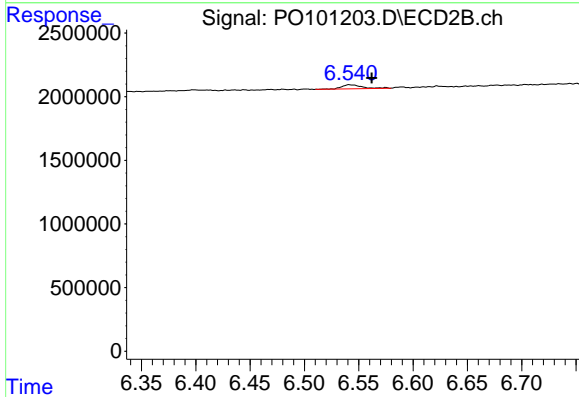
R.T.: 6.411 min
 Delta R.T.: 0.004 min
 Response: 47638
 Conc: 0.49 ng/ml



#33 AR-1260-3

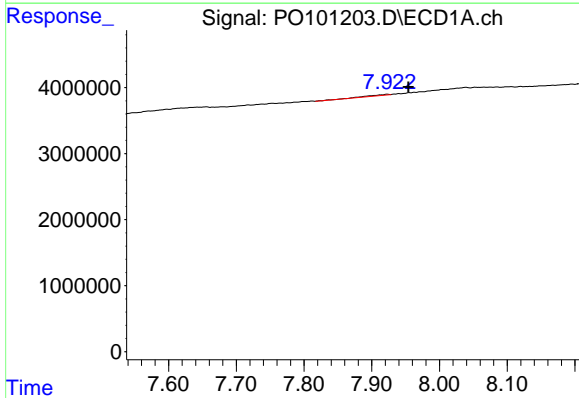
R.T.: 7.718 min
 Delta R.T.: -0.009 min
 Response: 215677
 Conc: 2.87 ng/ml

Instrument :
 ECD_O
 ClientSampleId :
 I.BLK



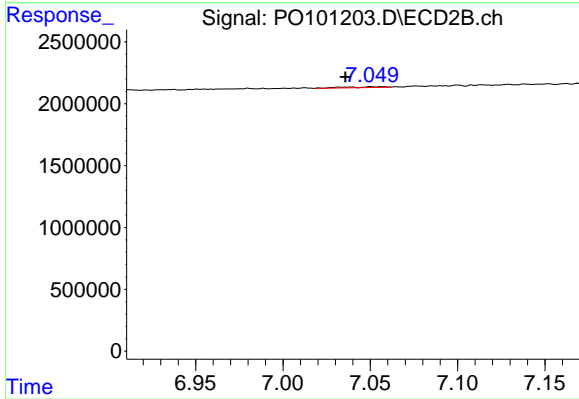
#33 AR-1260-3

R.T.: 6.542 min
 Delta R.T.: -0.020 min
 Response: 430989
 Conc: 4.67 ng/ml



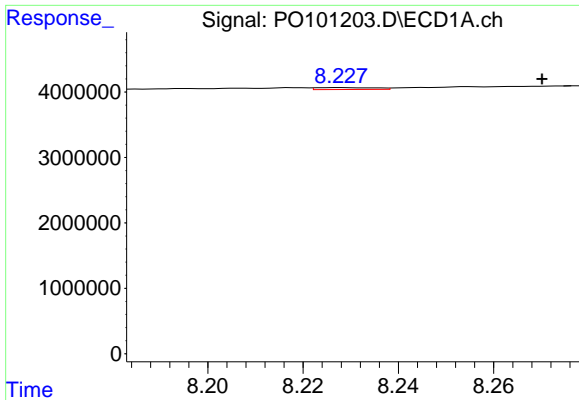
#34 AR-1260-4

R.T.: 7.923 min
 Delta R.T.: -0.031 min
 Response: 255517
 Conc: 3.30 ng/ml



#34 AR-1260-4

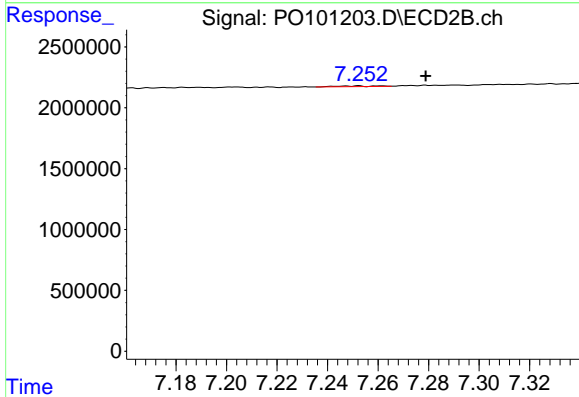
R.T.: 7.051 min
 Delta R.T.: 0.015 min
 Response: 102291
 Conc: 1.37 ng/ml



#35 AR-1260-5

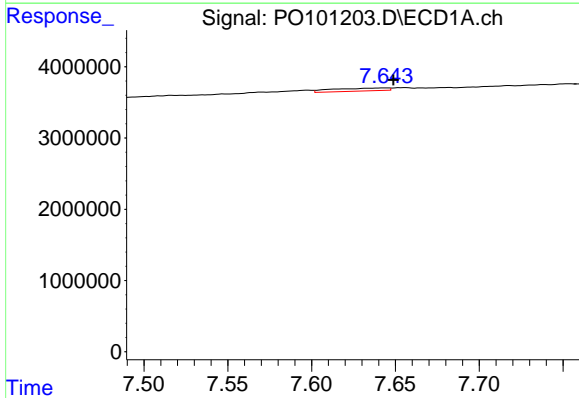
R.T.: 8.228 min
 Delta R.T.: -0.043 min
 Response: 252920
 Conc: 1.82 ng/ml

Instrument :
 ECD_O
 ClientSampleId :
 I.BLK



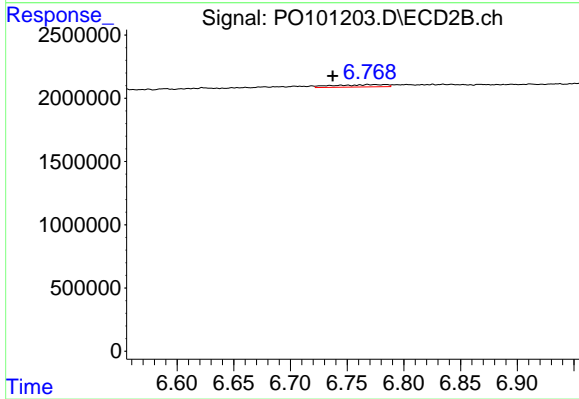
#35 AR-1260-5

R.T.: 7.252 min
 Delta R.T.: -0.027 min
 Response: 60873
 Conc: 0.44 ng/ml



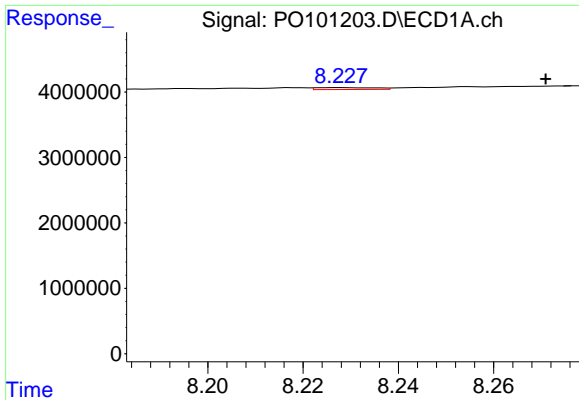
#36 AR-1262-1

R.T.: 7.644 min
 Delta R.T.: -0.005 min
 Response: 954771
 Conc: 12.19 ng/ml



#36 AR-1262-1

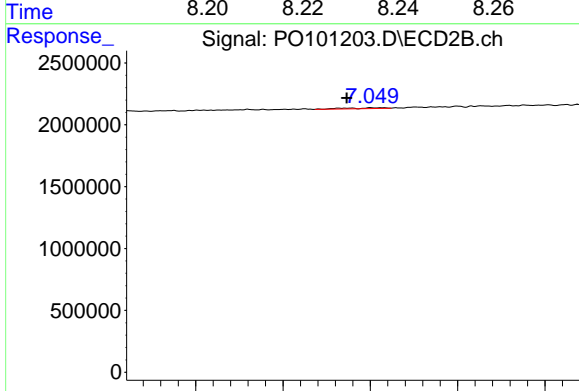
R.T.: 6.768 min
 Delta R.T.: 0.031 min
 Response: 590695
 Conc: 9.54 ng/ml



#37 AR-1262-2

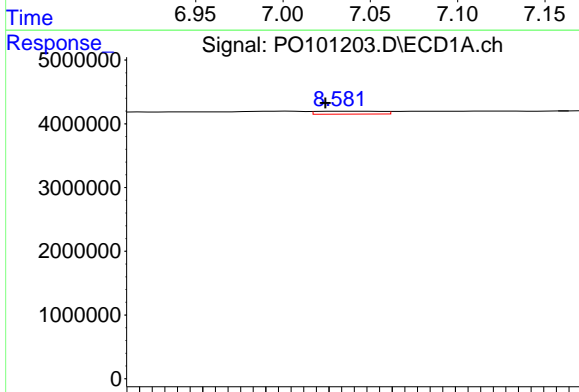
R.T.: 8.228 min
 Delta R.T.: -0.043 min
 Response: 252920
 Conc: 1.36 ng/ml

Instrument :
 ECD_O
 ClientSampleId :
 I.BLK



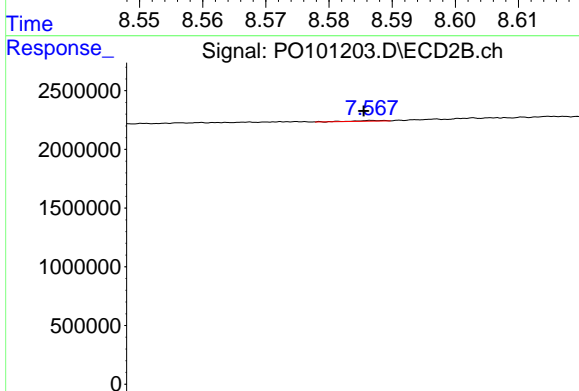
#37 AR-1262-2

R.T.: 7.051 min
 Delta R.T.: 0.014 min
 Response: 102291
 Conc: 0.91 ng/ml



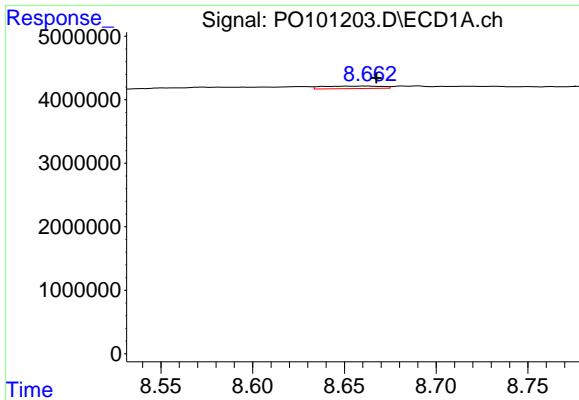
#38 AR-1262-3

R.T.: 8.582 min
 Delta R.T.: 0.003 min
 Response: 325796
 Conc: 2.48 ng/ml



#38 AR-1262-3

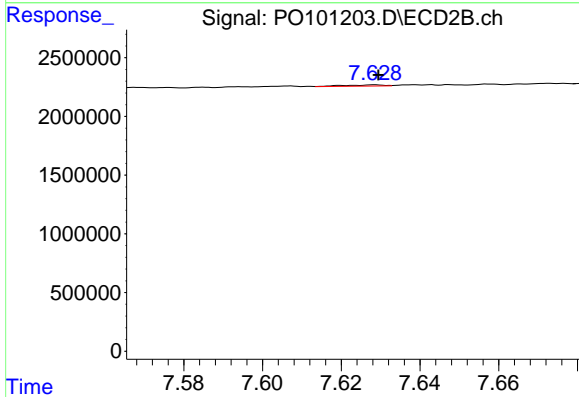
R.T.: 7.568 min
 Delta R.T.: 0.004 min
 Response: 63354
 Conc: 0.76 ng/ml



#39 AR-1262-4

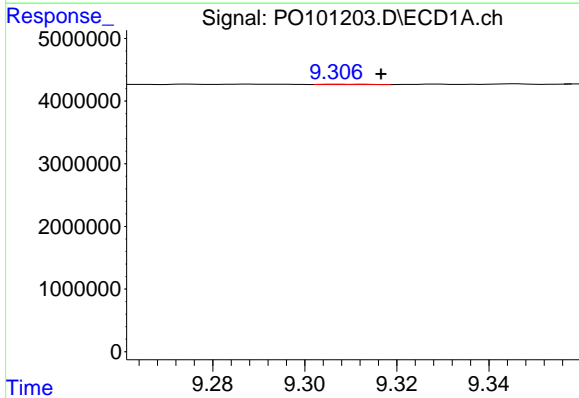
R.T.: 8.661 min
 Delta R.T.: -0.007 min
 Response: 883832
 Conc: 8.62 ng/ml

Instrument :
 ECD_O
 ClientSampleId :
 I.BLK



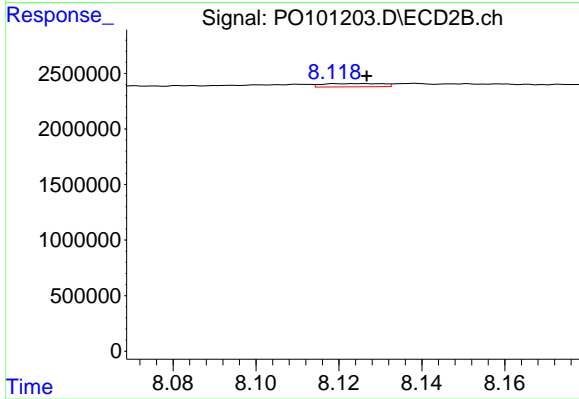
#39 AR-1262-4

R.T.: 7.628 min
 Delta R.T.: -0.001 min
 Response: 78710
 Conc: 0.56 ng/ml



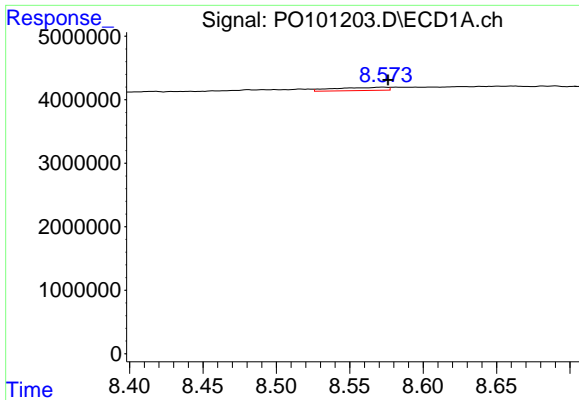
#40 AR-1262-5

R.T.: 9.307 min
 Delta R.T.: -0.010 min
 Response: 42094
 Conc: 0.69 ng/ml



#40 AR-1262-5

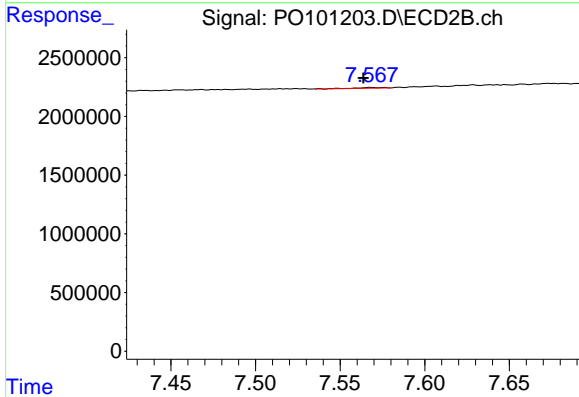
R.T.: 8.125 min
 Delta R.T.: -0.001 min
 Response: 299926
 Conc: 5.08 ng/ml



#41 AR-1268-1

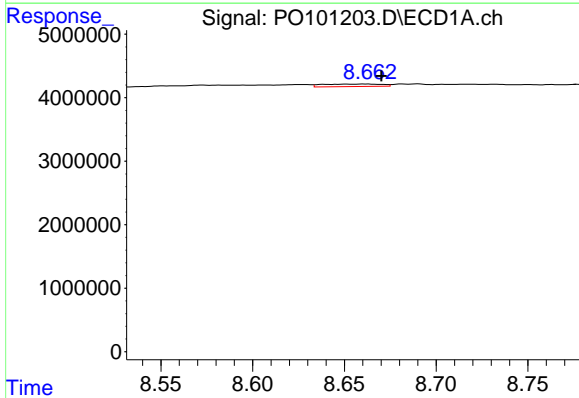
R.T.: 8.573 min
 Delta R.T.: -0.003 min
 Response: 1264717
 Conc: 5.65 ng/ml

Instrument :
 ECD_O
 ClientSampleId :
 I.BLK



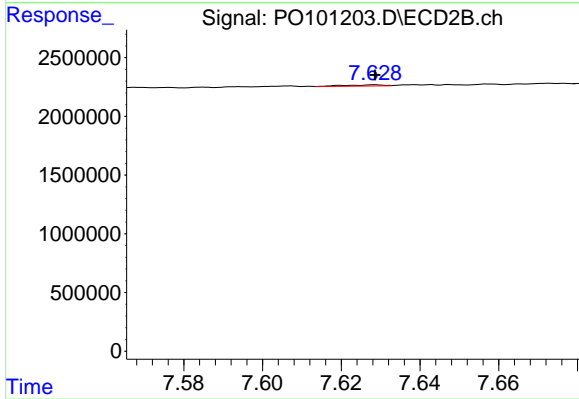
#41 AR-1268-1

R.T.: 7.568 min
 Delta R.T.: 0.005 min
 Response: 63354
 Conc: 0.31 ng/ml



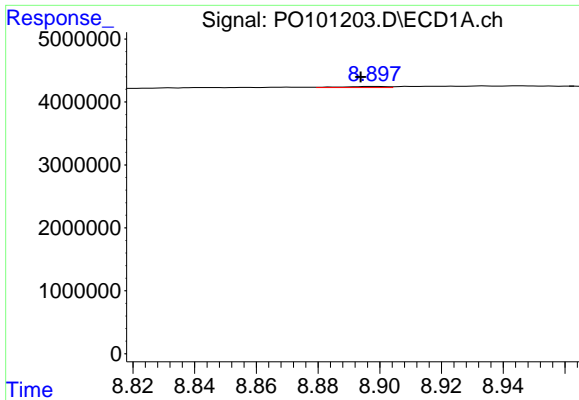
#42 AR-1268-2

R.T.: 8.661 min
 Delta R.T.: -0.009 min
 Response: 883832
 Conc: 4.47 ng/ml



#42 AR-1268-2

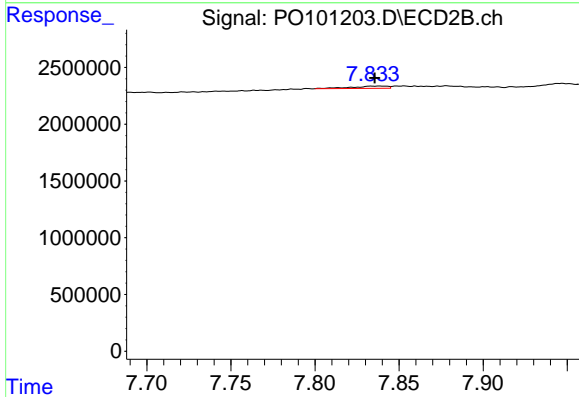
R.T.: 7.628 min
 Delta R.T.: 0.000 min
 Response: 78710
 Conc: 0.43 ng/ml



#43 AR-1268-3

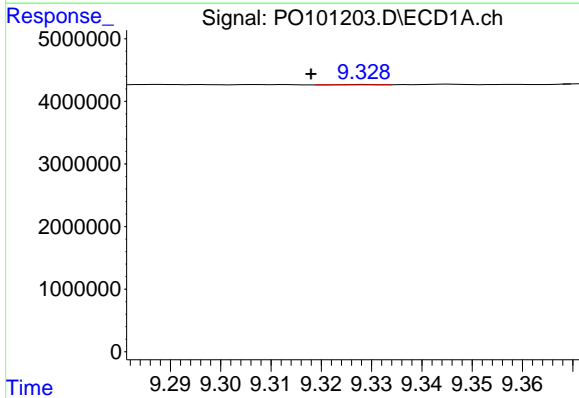
R.T.: 8.898 min
 Delta R.T.: 0.004 min
 Response: 173630
 Conc: 0.98 ng/ml

Instrument :
 ECD_O
 ClientSampleId :
 I.BLK



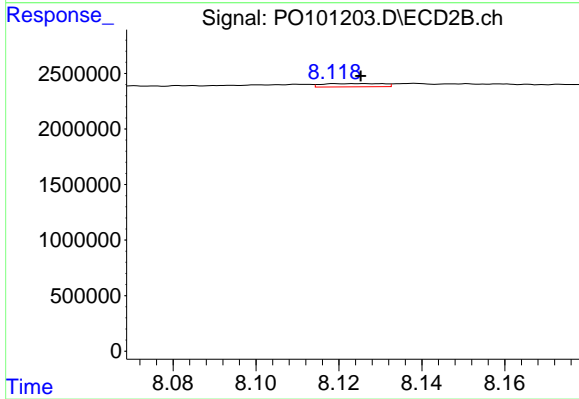
#43 AR-1268-3

R.T.: 7.839 min
 Delta R.T.: 0.003 min
 Response: 292445
 Conc: 1.70 ng/ml



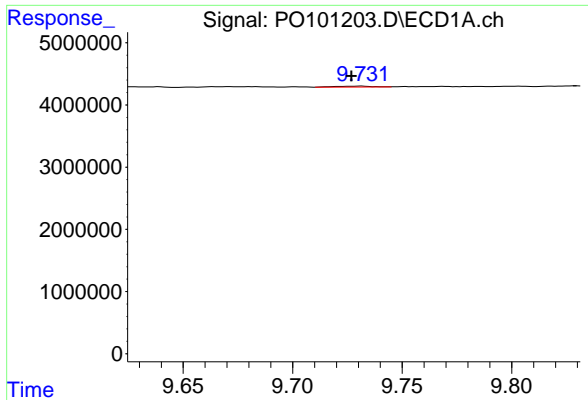
#44 AR-1268-4

R.T.: 9.329 min
 Delta R.T.: 0.011 min
 Response: 30241
 Conc: 0.50 ng/ml



#44 AR-1268-4

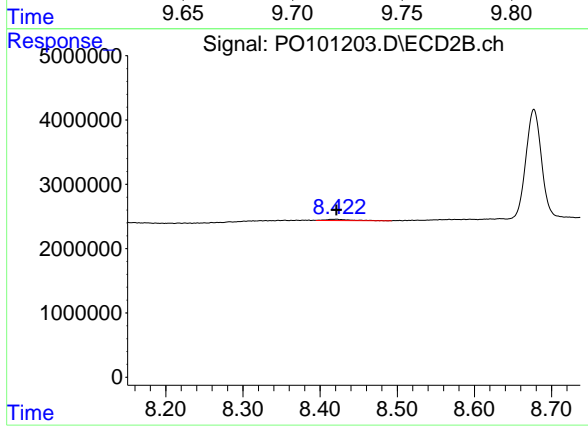
R.T.: 8.125 min
 Delta R.T.: 0.000 min
 Response: 299926
 Conc: 4.98 ng/ml



#45 AR-1268-5

R.T.: 9.731 min
 Delta R.T.: 0.005 min
 Response: 175864
 Conc: 0.34 ng/ml

Instrument :
 ECD_O
 ClientSampleId :
 I.BLK



#45 AR-1268-5

R.T.: 8.421 min
 Delta R.T.: 0.000 min
 Response: 405053
 Conc: 0.88 ng/ml