

Data Path : Z:\pestpcbsrv\HPCHEM1\ECD_O\Data\P0012224\
 Data File : P0101235.D
 Signal(s) : Signal #1: ECD1A.ch Signal #2: ECD2B.ch
 Acq On : 22 Jan 2024 18:54
 Operator : YP/AJ
 Sample : AR1254ICV500
 Misc :
 ALS Vial : 34 Sample Multiplier: 1

Instrument :
 ECD_O
 ClientSampleId :
 ICVPO012224AR1254

Integration File signal 1: autoint1.e
 Integration File signal 2: autoint2.e
 Quant Time: Jan 22 21:33:41 2024
 Quant Method : Z:\pestpcbsrv\HPCHEM1\ECD_O\methods\P0012224.M
 Quant Title : GC EXTRACTABLES
 QLast Update : Mon Jan 22 18:08:15 2024
 Response via : Initial Calibration
 Integrator: ChemStation

Volume Inj. : 2 µl
 Signal #1 Phase : ZB-MR1 Signal #2 Phase: ZB-MR2
 Signal #1 Info : 30Mx0.32mmx 0.50µ Signal #2 Info : 30M x 0.32mm x 0.25µm

| Compound | RT#1 | RT#2 | Resp#1 | Resp#2 | ng/ml | ng/ml |
|-----------------------------|--------|-------|----------|----------|----------|------------|
| System Monitoring Compounds | | | | | | |
| 1) SA Tetrachlo... | 4.334 | 3.632 | 137.9E6 | 97403453 | 48.849 | 50.199 |
| 2) SA Decachlor... | 10.062 | 8.678 | 69941074 | 62965105 | 49.763 | 49.586 |
| Target Compounds | | | | | | |
| 3) L1 AR-1016-1 | 5.501 | 4.724 | 1136118 | 973395 | 16.936 | 17.920 |
| 4) L1 AR-1016-2 | 5.531 | 4.743 | 1449309 | 757251 | 15.539 | 10.874 # |
| 5) L1 AR-1016-3 | 5.586 | 4.922 | 770733 | 412107 | 12.573 | 10.357 |
| 6) L1 AR-1016-4 | 5.686 | 4.962 | 686139 | 20677505 | 13.881 | 534.146 # |
| 7) L1 AR-1016-5 | 5.979 | 5.178 | 14103799 | 11968743 | 261.578 | 243.944 |
| 8) L2 AR-1221-1 | 4.543 | 3.839 | 440334 | 83484 | 14.805 | 3.841 # |
| 9) L2 AR-1221-2 | 4.638 | 3.934 | 1963846 | 1546214 | 87.529 | 90.742 |
| 10) L2 AR-1221-3 | 4.704 | 4.006 | 676081 | 358123 | 10.598 | 7.365 # |
| 11) L3 AR-1232-1 | 4.704 | 4.006 | 676081 | 358123 | 12.244 | 8.469 # |
| 12) L3 AR-1232-2 | 5.234 | 4.743 | 1166143 | 757251 | 34.332 | 20.461 # |
| 13) L3 AR-1232-3 | 5.531 | 4.922 | 1449309 | 412107 | 29.496 | 20.205 # |
| 14) L3 AR-1232-4 | 5.686 | 5.004 | 686139 | 6248234 | 26.849 | 286.546 # |
| 15) L3 AR-1232-5 | 5.776 | 5.178 | 25801973 | 11968743 | 1066.884 | 506.892 # |
| 16) L4 AR-1242-1 | 5.501 | 4.724 | 1136118 | 973395 | 20.090 | 21.135 |
| 17) L4 AR-1242-2 | 5.531 | 4.743 | 1449309 | 757251 | 18.430 | 12.759 # |
| 18) L4 AR-1242-3 | 5.586 | 4.922 | 770733 | 412107 | 15.110 | 12.340 |
| 19) L4 AR-1242-4 | 5.686 | 5.004 | 686139 | 6248234 | 16.604 | 163.487 # |
| 20) L4 AR-1242-5 | 6.427 | 5.533 | 11681669 | 44704612 | 321.527 | 1125.414 # |
| 21) L5 AR-1248-1 | 5.501 | 4.724 | 1136118 | 973395 | 26.457 | 27.407 |
| 22) L5 AR-1248-2 | 5.776 | 4.962 | 25801973 | 20677505 | 345.379 | 373.408 |
| 23) L5 AR-1248-3 | 5.979 | 5.004 | 14103799 | 6248234 | 189.691 | 110.099 # |
| 24) L5 AR-1248-4 | 6.384 | 5.178 | 16119770 | 11968743 | 244.025 | 181.313 # |
| 25) L5 AR-1248-5 | 6.427 | 5.574 | 11681669 | 4865215 | 183.254 | 96.603 # |
| 26) L6 AR-1254-1 | 6.358 | 5.533 | 40994378 | 44704612 | 468.279 | 462.250 |
| 27) L6 AR-1254-2 | 6.577 | 5.681 | 57802117 | 39457672 | 461.912 | 463.857 |
| 28) L6 AR-1254-3 | 6.944 | 6.089 | 53352520 | 57847717 | 466.573 | 468.089 |
| 29) L6 AR-1254-4 | 7.231 | 6.319 | 32228220 | 28714498 | 463.665 | 471.145 |
| 30) L6 AR-1254-5 | 7.652 | 6.739 | 38169583 | 46574240 | 461.584 | 460.300 |
| 31) L7 AR-1260-1 | 7.109 | 6.219 | 23884323 | 30030050 | 248.732 | 329.587 # |
| 32) L7 AR-1260-2 | 7.367 | 6.407 | 23390522 | 23206060 | 246.262 | 239.417 |
| 33) L7 AR-1260-3 | 7.713 | 6.562 | 5421560 | 23331155 | 72.108 | 252.813 # |
| 34) L7 AR-1260-4 | 7.941 | 7.037 | 13589275 | 2438332 | 175.486 | 32.756 # |
| 35) L7 AR-1260-5 | 8.271 | 7.279 | 5170280 | 5526752 | 37.294 | 39.614 |
| 36) L8 AR-1262-1 | 7.652 | 6.739 | 38169583 | 46574240 | 487.256 | 752.352 # |
| 37) L8 AR-1262-2 | 8.271 | 7.037 | 5170280 | 2438332 | 27.850 | 21.628 |
| 38) L8 AR-1262-3 | 8.593 | 7.562 | 4350640 | 223948 | 33.105 | 2.673 # |
| 39) L8 AR-1262-4 | 8.674 | 7.628 | 275406 | 4608726 | 2.687 | 32.621 # |
| 40) L8 AR-1262-5 | 9.312 | 8.124 | 274038 | 540696 | 4.472 | 9.150 # |
| 41) L9 AR-1268-1 | 8.593 | 7.562 | 4350640 | 223948 | 19.431 | 1.093 # |

Data Path : Z:\pestpcbsrv\HPCHEM1\ECD_0\Data\P0012224\
 Data File : P0101235.D
 Signal(s) : Signal #1: ECD1A.ch Signal #2: ECD2B.ch
 Acq On : 22 Jan 2024 18:54
 Operator : YP/AJ
 Sample : AR1254ICV500
 Misc :
 ALS Vial : 34 Sample Multiplier: 1

Instrument :
 ECD_0
 ClientSampleId :
 ICVPO012224AR1254

Integration File signal 1: autoint1.e
 Integration File signal 2: autoint2.e
 Quant Time: Jan 22 21:33:41 2024
 Quant Method : Z:\pestpcbsrv\HPCHEM1\ECD_0\methods\P0012224.M
 Quant Title : GC EXTRACTABLES
 QLast Update : Mon Jan 22 18:08:15 2024
 Response via : Initial Calibration
 Integrator: ChemStation

Volume Inj. : 2 µl
 Signal #1 Phase : ZB-MR1 Signal #2 Phase: ZB-MR2
 Signal #1 Info : 30Mx0.32mmx 0.50µ Signal #2 Info : 30M x 0.32mm x 0.25µm

| | Compound | RT#1 | RT#2 | Resp#1 | Resp#2 | ng/ml | ng/ml |
|-----|--------------|-------|-------|--------|---------|-------|----------|
| 42) | L9 AR-1268-2 | 8.674 | 7.628 | 275406 | 4608726 | 1.393 | 25.082 # |
| 43) | L9 AR-1268-3 | 8.904 | 7.837 | 216435 | 317150 | 1.223 | 1.842 # |
| 44) | L9 AR-1268-4 | 9.312 | 8.124 | 274038 | 540696 | 4.505 | 8.975 # |
| 45) | L9 AR-1268-5 | 9.727 | 8.419 | 981315 | 802463 | 1.907 | 1.751 |

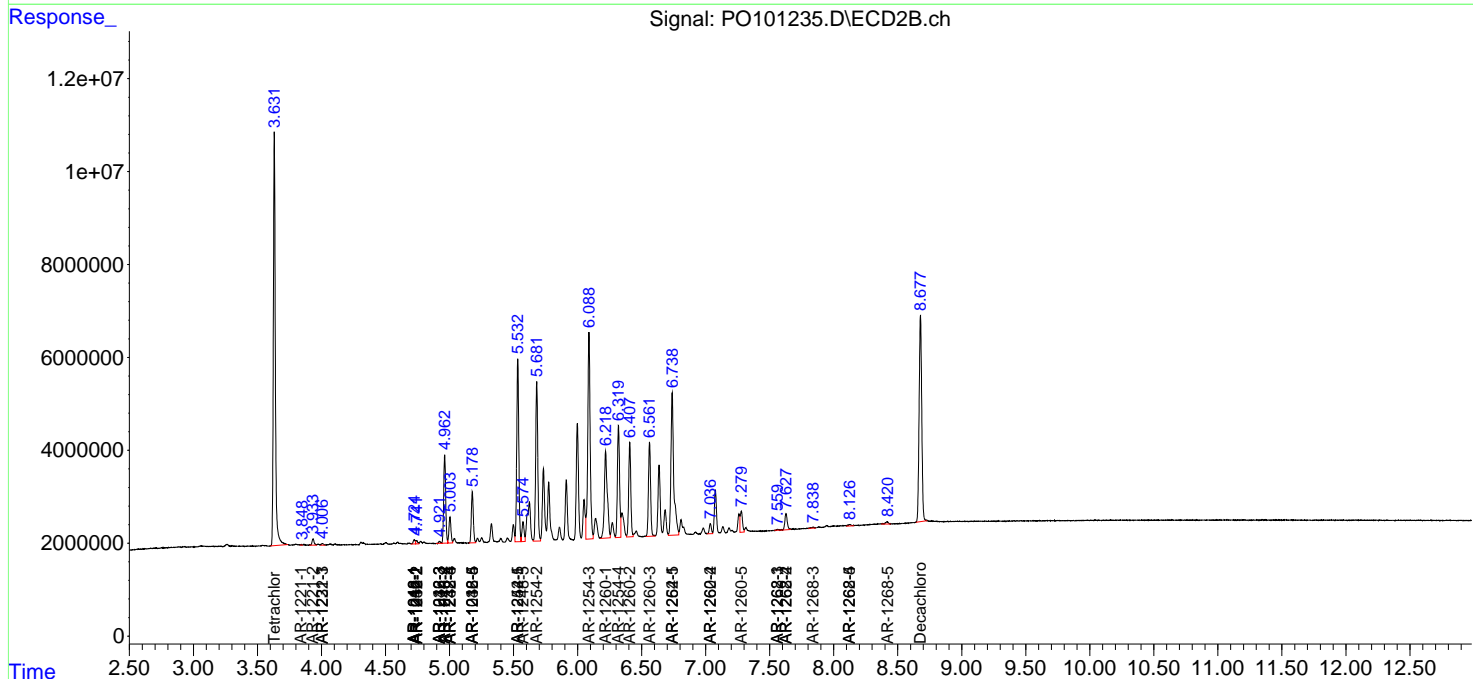
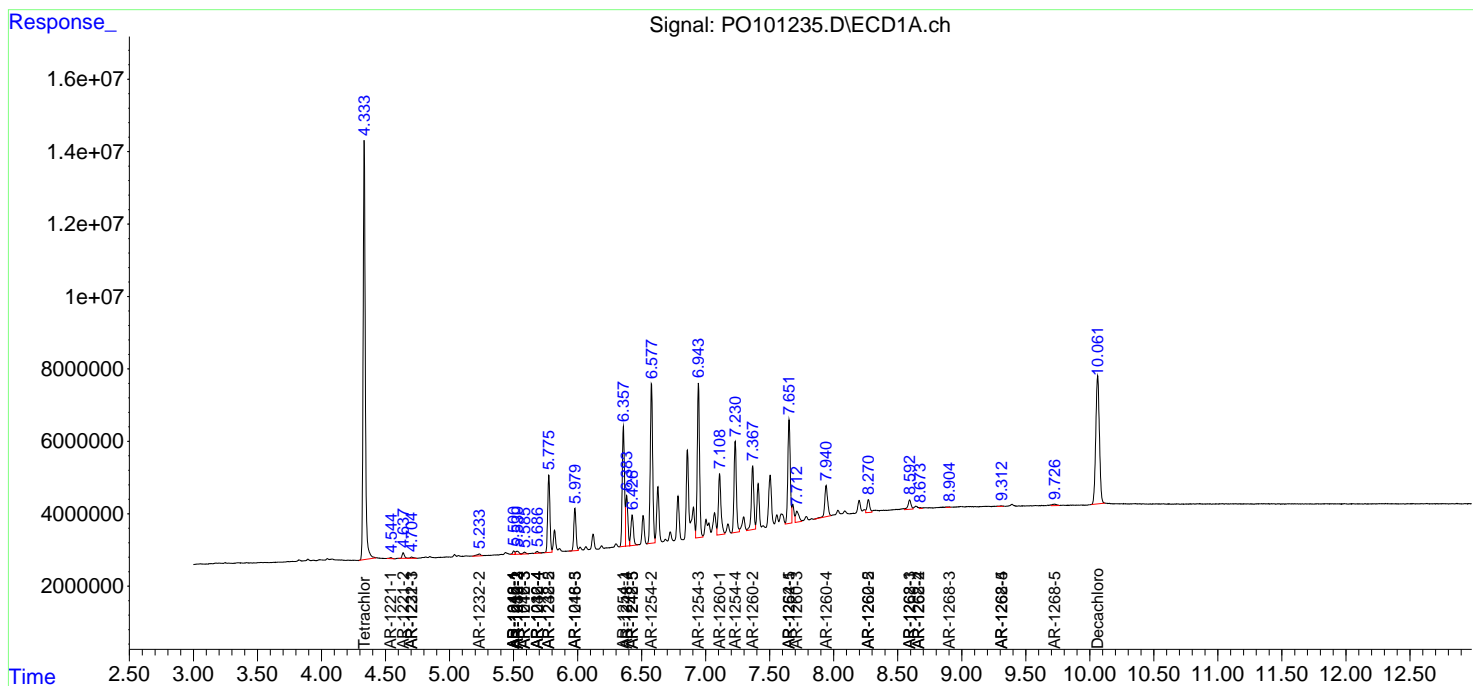
(f)=RT Delta > 1/2 Window (#)=Amounts differ by > 25% (m)=manual int.

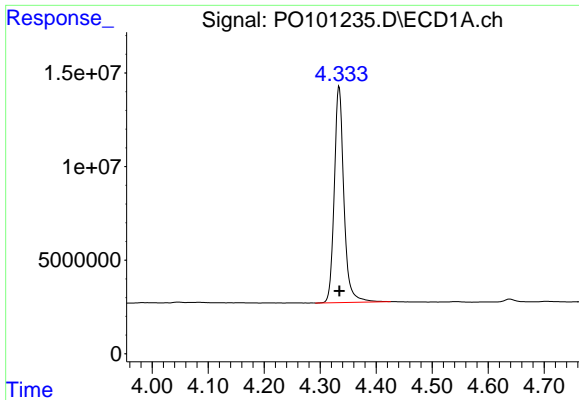
Data Path : Z:\pestpcbsrv\HPCHEM1\ECD_O\Data\PO012224\
 Data File : PO101235.D
 Signal(s) : Signal #1: ECD1A.ch Signal #2: ECD2B.ch
 Acq On : 22 Jan 2024 18:54
 Operator : YP/AJ
 Sample : AR1254ICV500
 Misc :
 ALS Vial : 34 Sample Multiplier: 1

Instrument :
 ECD_O
 ClientSampleId :
 ICVPO012224AR1254

Integration File signal 1: autoint1.e
 Integration File signal 2: autoint2.e
 Quant Time: Jan 22 21:33:41 2024
 Quant Method : Z:\pestpcbsrv\HPCHEM1\ECD_O\methods\PO012224.M
 Quant Title : GC EXTRACTABLES
 QLast Update : Mon Jan 22 18:08:15 2024
 Response via : Initial Calibration
 Integrator: ChemStation

Volume Inj. : 2 µl
 Signal #1 Phase : ZB-MR1 Signal #2 Phase: ZB-MR2
 Signal #1 Info : 30Mx0.32mmx 0.50µ Signal #2 Info : 30M x 0.32mm x 0.25µm

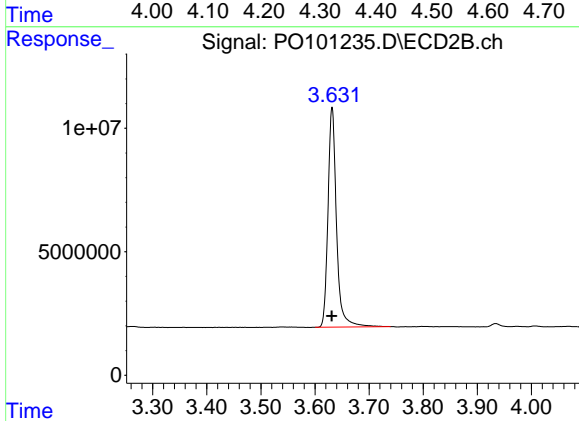




#1 Tetrachloro-m-xylene

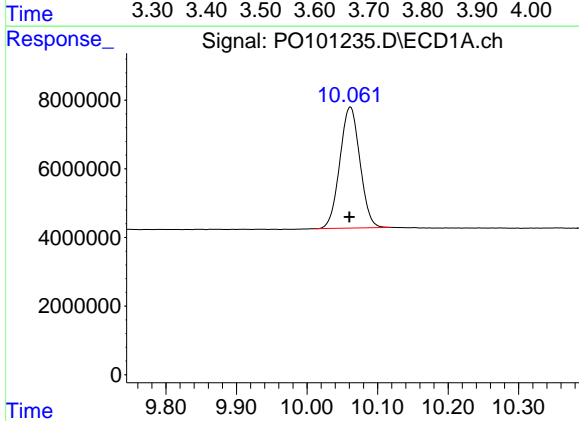
R.T.: 4.334 min
 Delta R.T.: 0.000 min
 Response: 137898895
 Conc: 48.85 ng/ml

Instrument :
 ECD_O
 ClientSampleId :
 ICVPO012224AR1254



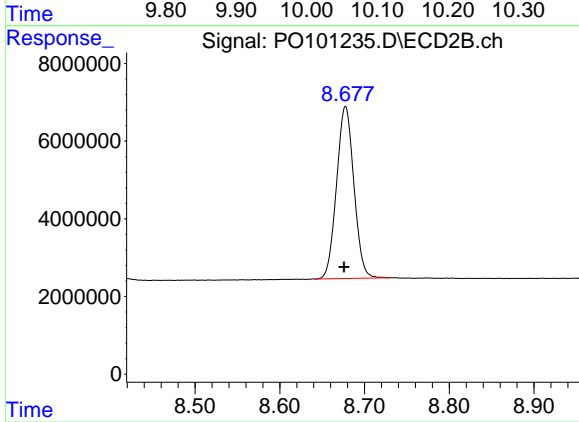
#1 Tetrachloro-m-xylene

R.T.: 3.632 min
 Delta R.T.: 0.000 min
 Response: 97403453
 Conc: 50.20 ng/ml



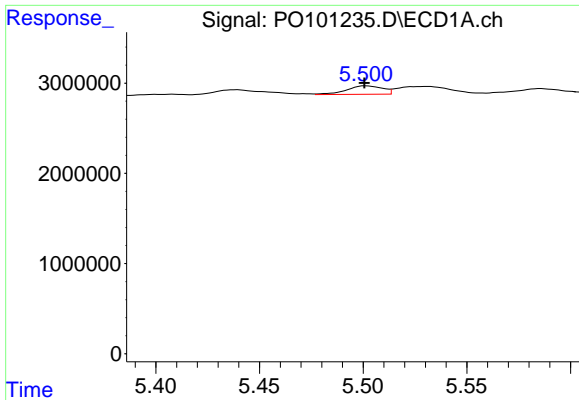
#2 Decachlorobiphenyl

R.T.: 10.062 min
 Delta R.T.: 0.001 min
 Response: 69941074
 Conc: 49.76 ng/ml



#2 Decachlorobiphenyl

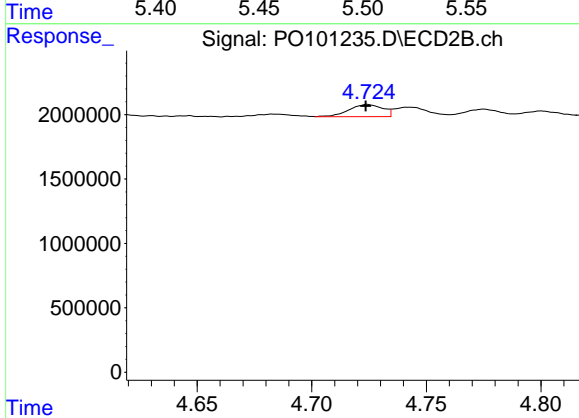
R.T.: 8.678 min
 Delta R.T.: 0.002 min
 Response: 62965105
 Conc: 49.59 ng/ml



#3 AR-1016-1

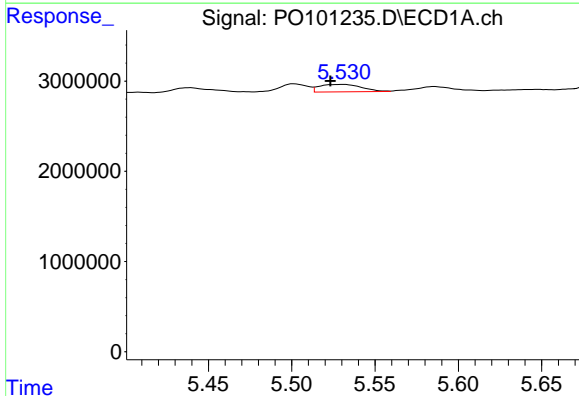
R.T.: 5.501 min
 Delta R.T.: 0.000 min
 Response: 1136118
 Conc: 16.94 ng/ml

Instrument :
 ECD_O
 ClientSampleId :
 ICVPO012224AR1254



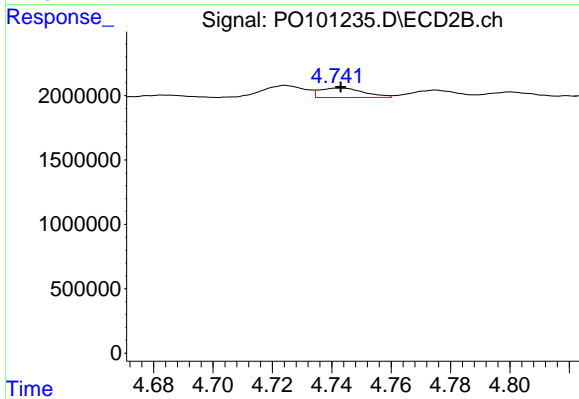
#3 AR-1016-1

R.T.: 4.724 min
 Delta R.T.: 0.000 min
 Response: 973395
 Conc: 17.92 ng/ml



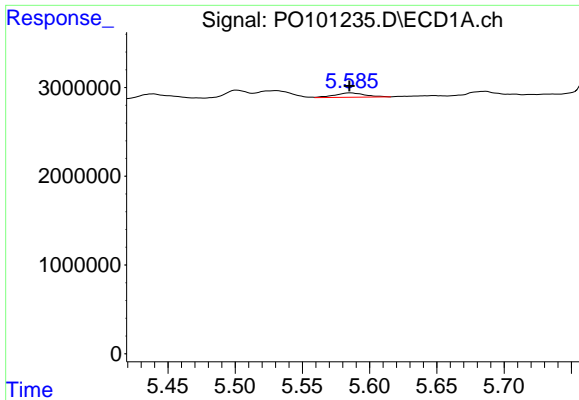
#4 AR-1016-2

R.T.: 5.531 min
 Delta R.T.: 0.007 min
 Response: 1449309
 Conc: 15.54 ng/ml



#4 AR-1016-2

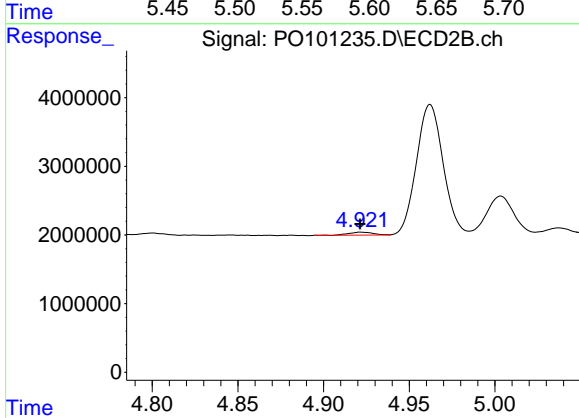
R.T.: 4.743 min
 Delta R.T.: 0.000 min
 Response: 757251
 Conc: 10.87 ng/ml



#5 AR-1016-3

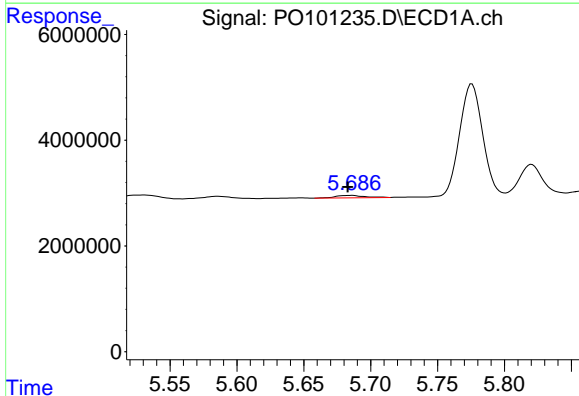
R.T.: 5.586 min
 Delta R.T.: 0.000 min
 Response: 770733
 Conc: 12.57 ng/ml

Instrument :
 ECD_O
 ClientSampleId :
 ICVPO012224AR1254



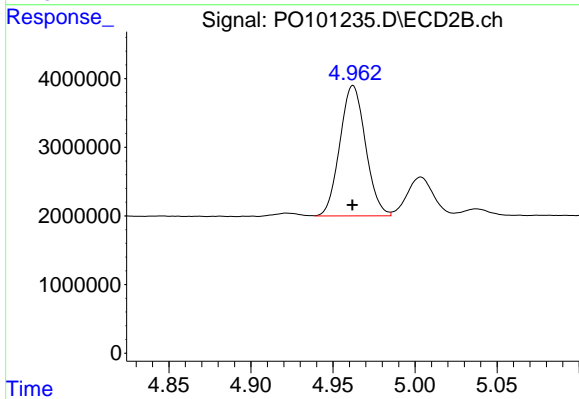
#5 AR-1016-3

R.T.: 4.922 min
 Delta R.T.: 0.000 min
 Response: 412107
 Conc: 10.36 ng/ml



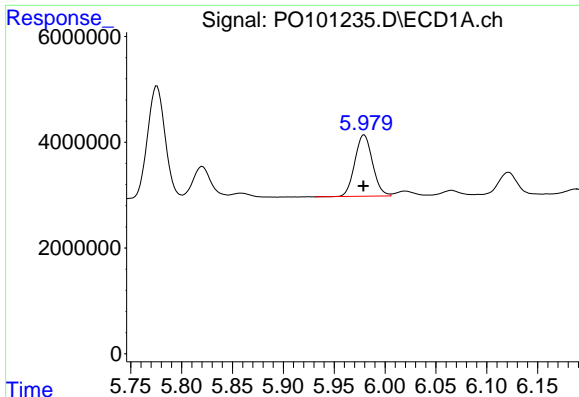
#6 AR-1016-4

R.T.: 5.686 min
 Delta R.T.: 0.003 min
 Response: 686139
 Conc: 13.88 ng/ml



#6 AR-1016-4

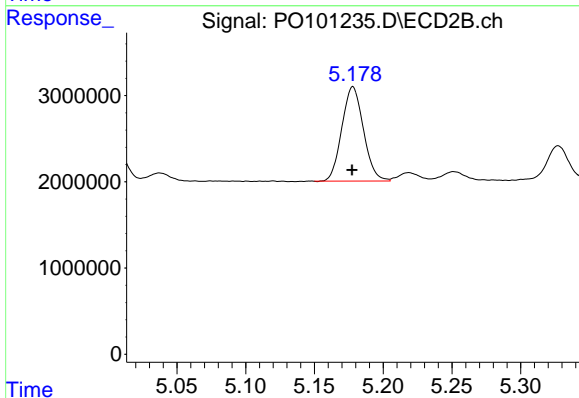
R.T.: 4.962 min
 Delta R.T.: 0.000 min
 Response: 20677505
 Conc: 534.15 ng/ml



#7 AR-1016-5

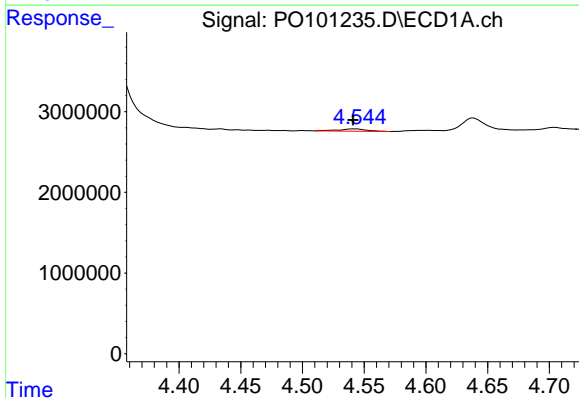
R.T.: 5.979 min
 Delta R.T.: 0.000 min
 Response: 14103799
 Conc: 261.58 ng/ml

Instrument :
 ECD_O
 ClientSampleId :
 ICVPO012224AR1254



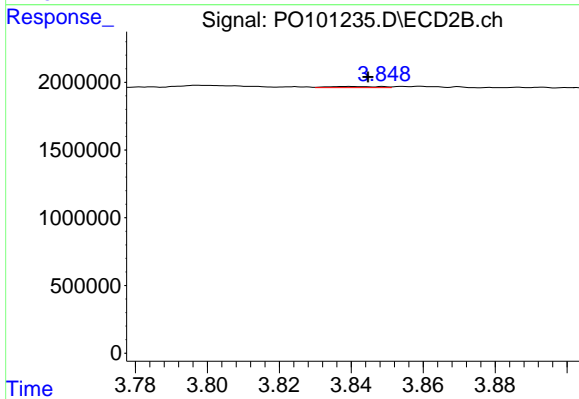
#7 AR-1016-5

R.T.: 5.178 min
 Delta R.T.: 0.000 min
 Response: 11968743
 Conc: 243.94 ng/ml



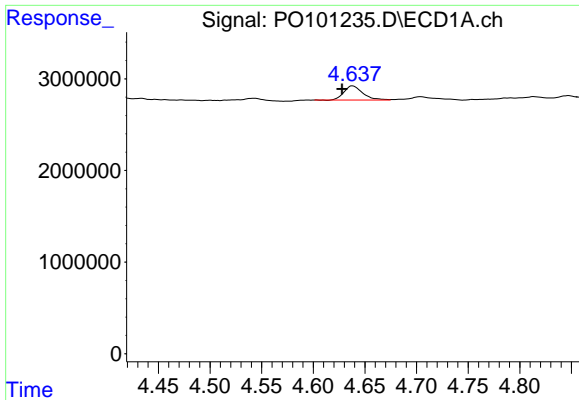
#8 AR-1221-1

R.T.: 4.543 min
 Delta R.T.: 0.002 min
 Response: 440334
 Conc: 14.80 ng/ml



#8 AR-1221-1

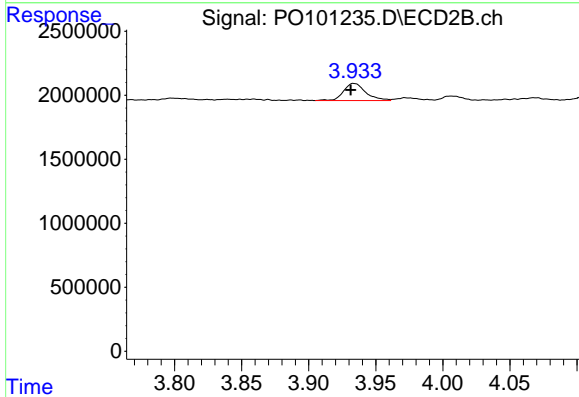
R.T.: 3.839 min
 Delta R.T.: -0.005 min
 Response: 83484
 Conc: 3.84 ng/ml



#9 AR-1221-2

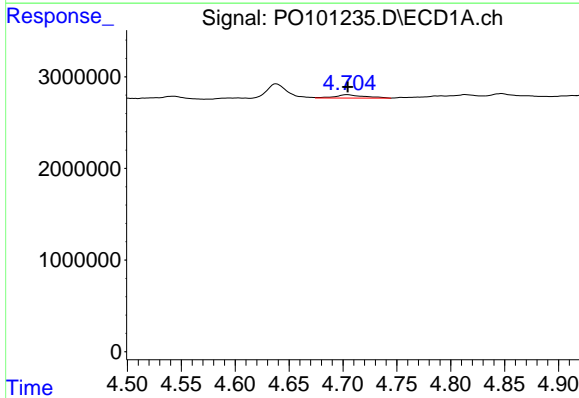
R.T.: 4.638 min
 Delta R.T.: 0.010 min
 Response: 1963846
 Conc: 87.53 ng/ml

Instrument :
 ECD_O
 ClientSampleId :
 ICVPO012224AR1254



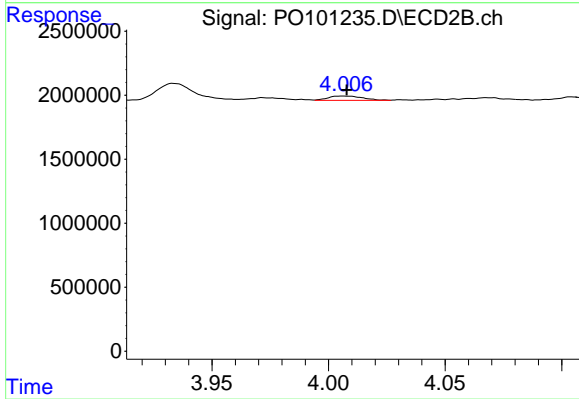
#9 AR-1221-2

R.T.: 3.934 min
 Delta R.T.: 0.002 min
 Response: 1546214
 Conc: 90.74 ng/ml



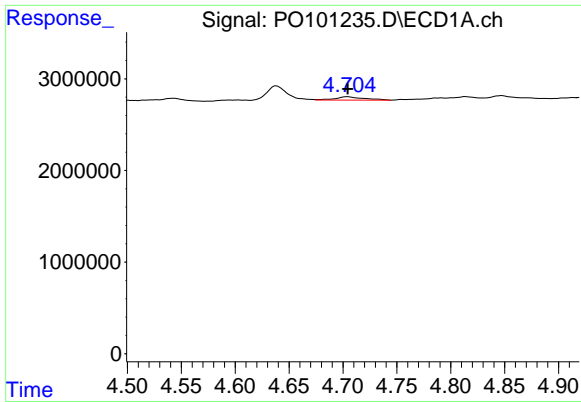
#10 AR-1221-3

R.T.: 4.704 min
 Delta R.T.: 0.000 min
 Response: 676081
 Conc: 10.60 ng/ml



#10 AR-1221-3

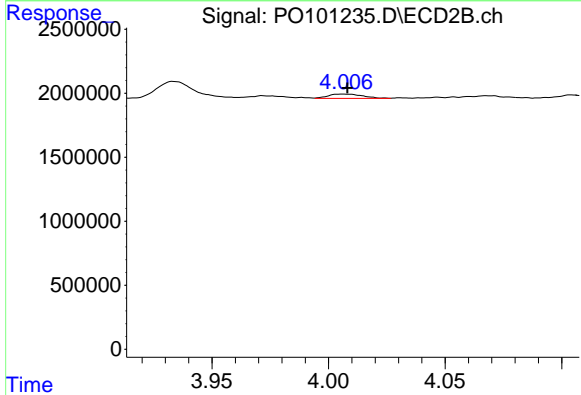
R.T.: 4.006 min
 Delta R.T.: -0.002 min
 Response: 358123
 Conc: 7.37 ng/ml



#11 AR-1232-1

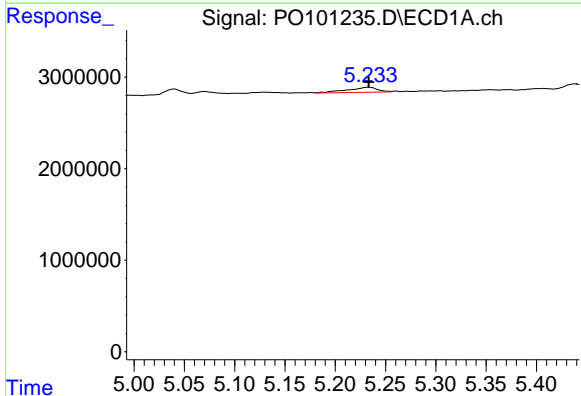
R.T.: 4.704 min
 Delta R.T.: 0.000 min
 Response: 676081
 Conc: 12.24 ng/ml

Instrument :
 ECD_O
 ClientSampleId :
 ICVPO012224AR1254



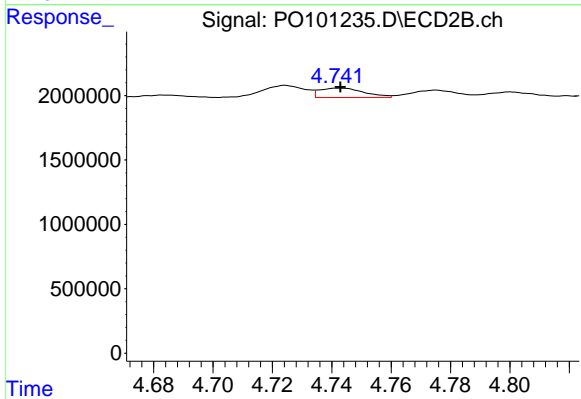
#11 AR-1232-1

R.T.: 4.006 min
 Delta R.T.: -0.002 min
 Response: 358123
 Conc: 8.47 ng/ml



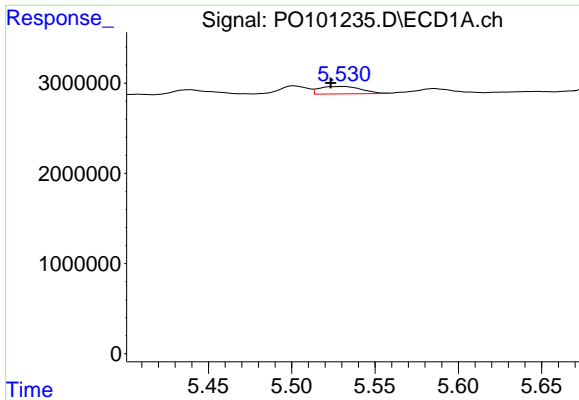
#12 AR-1232-2

R.T.: 5.234 min
 Delta R.T.: 0.000 min
 Response: 1166143
 Conc: 34.33 ng/ml



#12 AR-1232-2

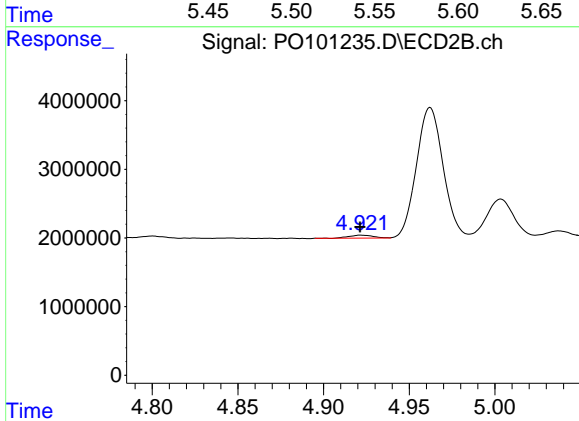
R.T.: 4.743 min
 Delta R.T.: 0.000 min
 Response: 757251
 Conc: 20.46 ng/ml



#13 AR-1232-3

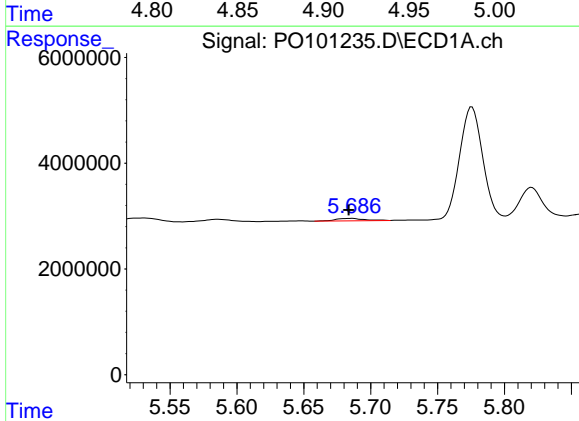
R.T.: 5.531 min
 Delta R.T.: 0.007 min
 Response: 1449309
 Conc: 29.50 ng/ml

Instrument :
 ECD_O
 ClientSampleId :
 ICVPO012224AR1254



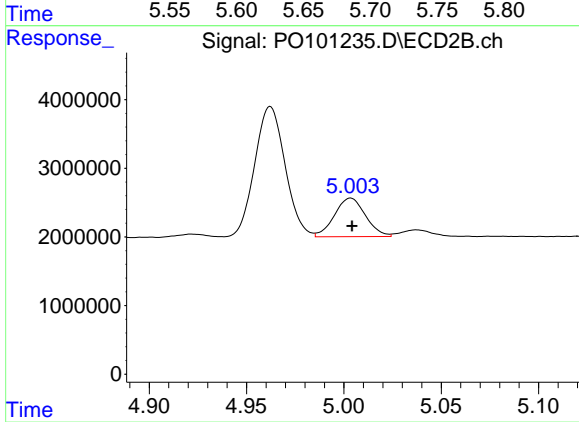
#13 AR-1232-3

R.T.: 4.922 min
 Delta R.T.: 0.000 min
 Response: 412107
 Conc: 20.20 ng/ml



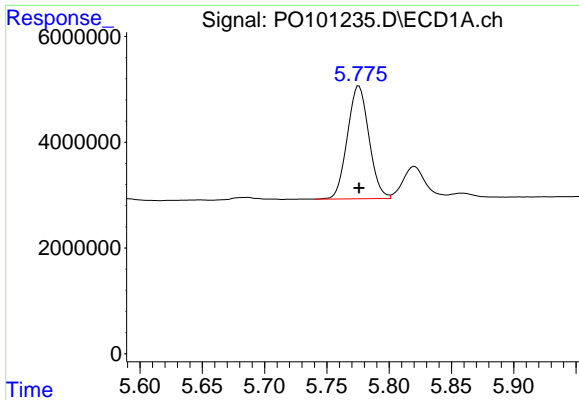
#14 AR-1232-4

R.T.: 5.686 min
 Delta R.T.: 0.002 min
 Response: 686139
 Conc: 26.85 ng/ml



#14 AR-1232-4

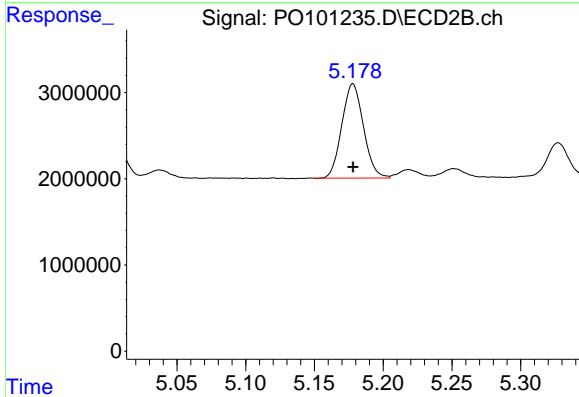
R.T.: 5.004 min
 Delta R.T.: 0.000 min
 Response: 6248234
 Conc: 286.55 ng/ml



#15 AR-1232-5

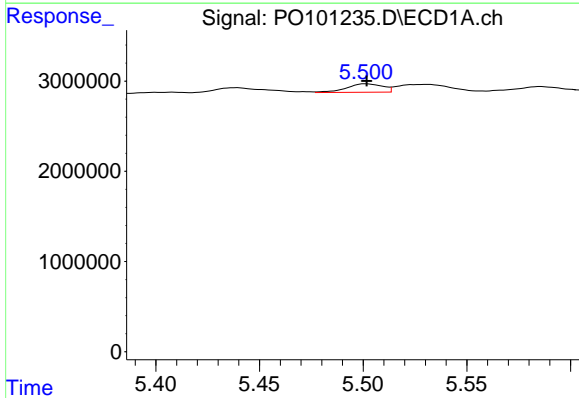
R.T.: 5.776 min
 Delta R.T.: 0.000 min
 Response: 25801973
 Conc: 1066.88 ng/ml

Instrument :
 ECD_O
 ClientSampleId :
 ICVPO012224AR1254



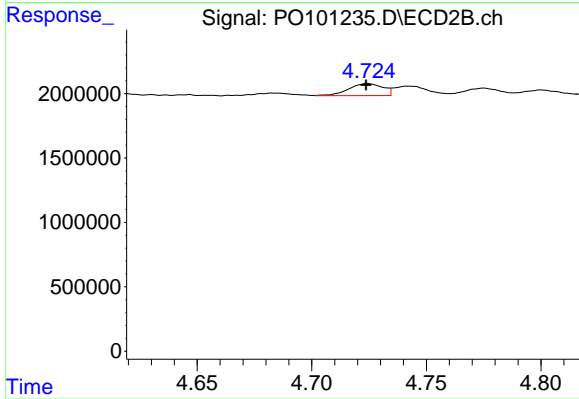
#15 AR-1232-5

R.T.: 5.178 min
 Delta R.T.: 0.000 min
 Response: 11968743
 Conc: 506.89 ng/ml



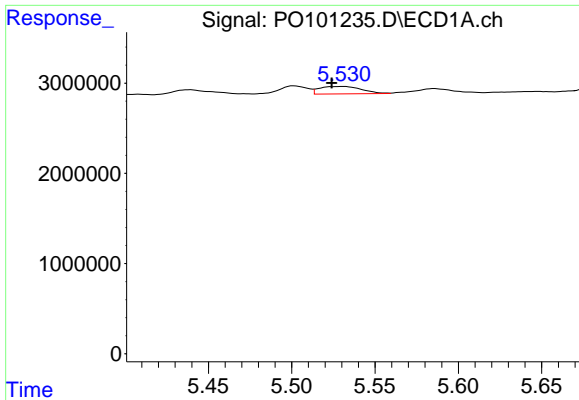
#16 AR-1242-1

R.T.: 5.501 min
 Delta R.T.: 0.000 min
 Response: 1136118
 Conc: 20.09 ng/ml



#16 AR-1242-1

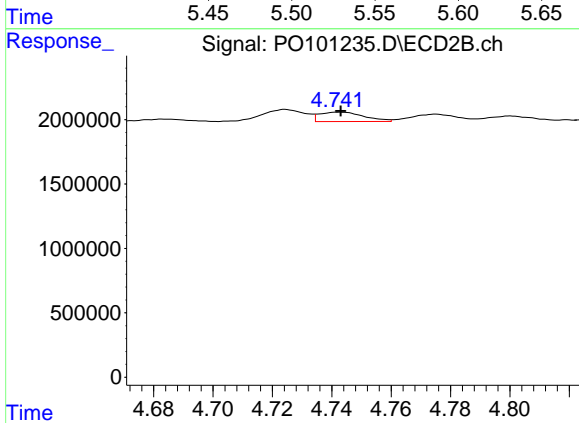
R.T.: 4.724 min
 Delta R.T.: 0.000 min
 Response: 973395
 Conc: 21.14 ng/ml



#17 AR-1242-2

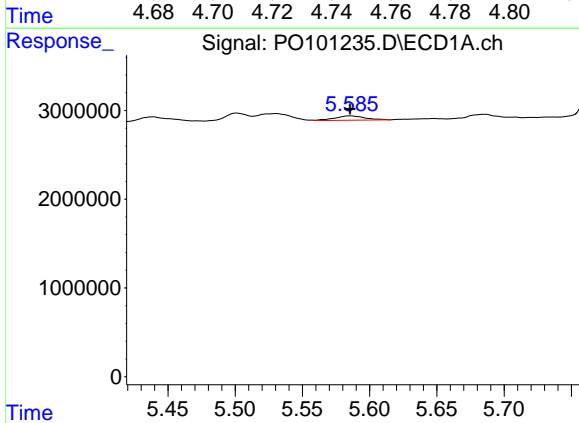
R.T.: 5.531 min
 Delta R.T.: 0.007 min
 Response: 1449309
 Conc: 18.43 ng/ml

Instrument :
 ECD_O
 ClientSampleId :
 ICVPO012224AR1254



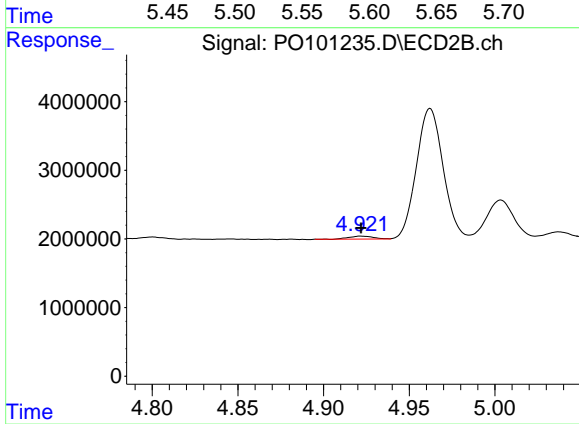
#17 AR-1242-2

R.T.: 4.743 min
 Delta R.T.: 0.000 min
 Response: 757251
 Conc: 12.76 ng/ml



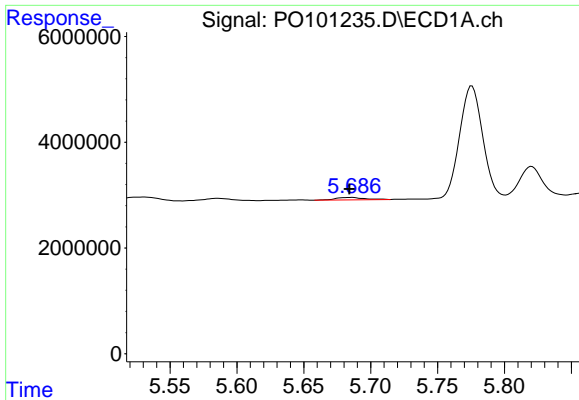
#18 AR-1242-3

R.T.: 5.586 min
 Delta R.T.: 0.000 min
 Response: 770733
 Conc: 15.11 ng/ml



#18 AR-1242-3

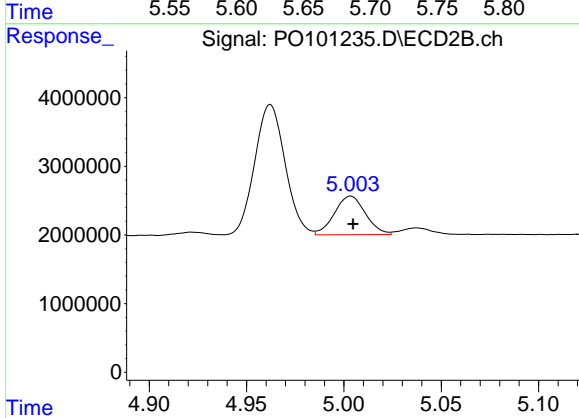
R.T.: 4.922 min
 Delta R.T.: 0.000 min
 Response: 412107
 Conc: 12.34 ng/ml



#19 AR-1242-4

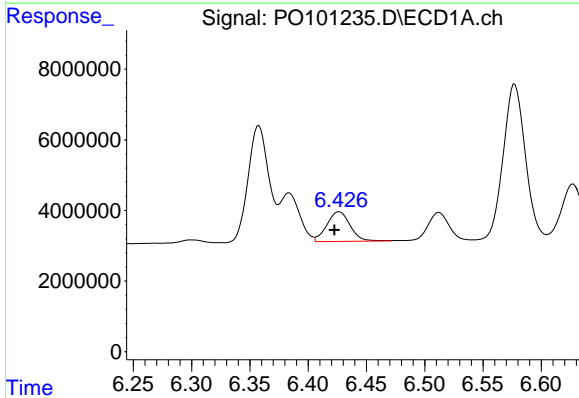
R.T.: 5.686 min
 Delta R.T.: 0.002 min
 Response: 686139
 Conc: 16.60 ng/ml

Instrument :
 ECD_O
 ClientSampleId :
 ICVPO012224AR1254



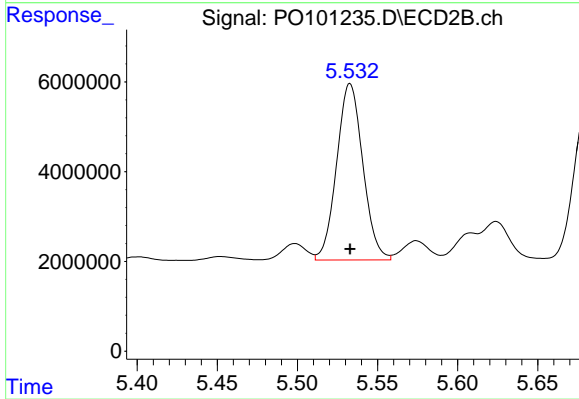
#19 AR-1242-4

R.T.: 5.004 min
 Delta R.T.: -0.001 min
 Response: 6248234
 Conc: 163.49 ng/ml



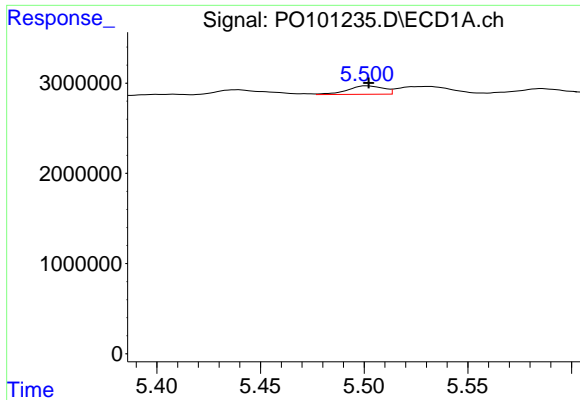
#20 AR-1242-5

R.T.: 6.427 min
 Delta R.T.: 0.004 min
 Response: 11681669
 Conc: 321.53 ng/ml



#20 AR-1242-5

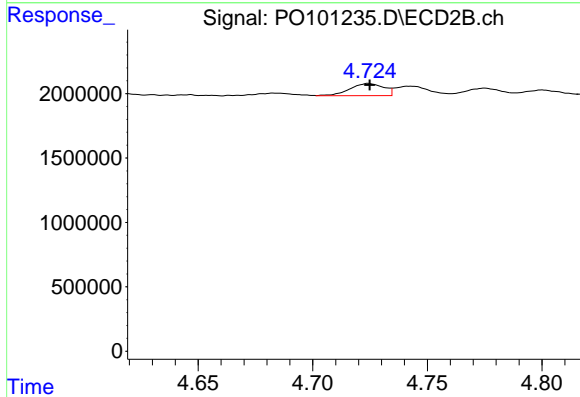
R.T.: 5.533 min
 Delta R.T.: 0.000 min
 Response: 44704612
 Conc: 1125.41 ng/ml



#21 AR-1248-1

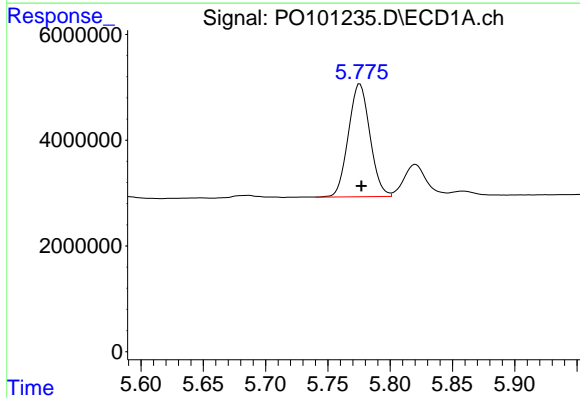
R.T.: 5.501 min
 Delta R.T.: -0.001 min
 Response: 1136118
 Conc: 26.46 ng/ml

Instrument :
 ECD_O
 ClientSampleId :
 ICVPO012224AR1254



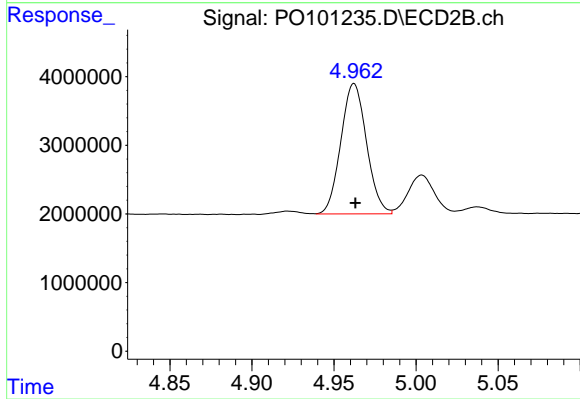
#21 AR-1248-1

R.T.: 4.724 min
 Delta R.T.: 0.000 min
 Response: 973395
 Conc: 27.41 ng/ml



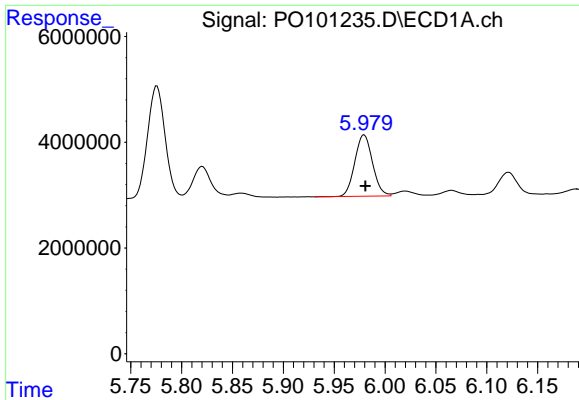
#22 AR-1248-2

R.T.: 5.776 min
 Delta R.T.: -0.001 min
 Response: 25801973
 Conc: 345.38 ng/ml



#22 AR-1248-2

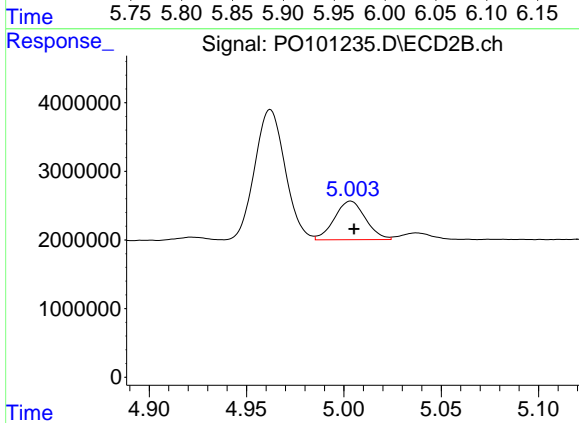
R.T.: 4.962 min
 Delta R.T.: 0.000 min
 Response: 20677505
 Conc: 373.41 ng/ml



#23 AR-1248-3

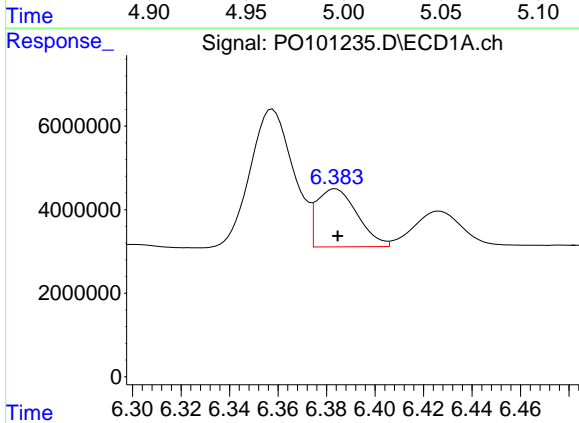
R.T.: 5.979 min
 Delta R.T.: -0.001 min
 Response: 14103799
 Conc: 189.69 ng/ml

Instrument :
 ECD_O
 ClientSampleId :
 ICVPO012224AR1254



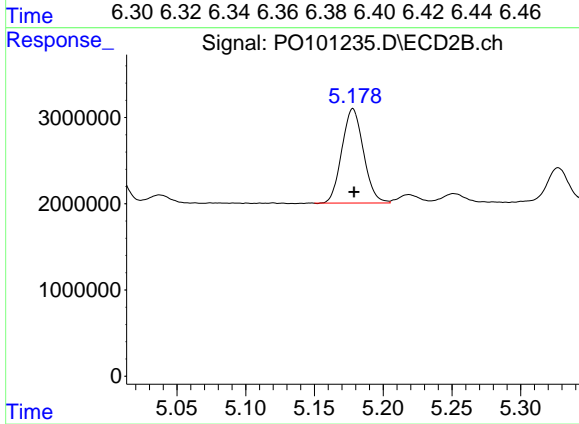
#23 AR-1248-3

R.T.: 5.004 min
 Delta R.T.: -0.002 min
 Response: 6248234
 Conc: 110.10 ng/ml



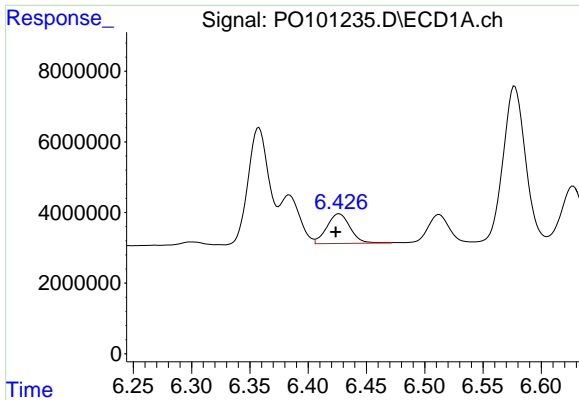
#24 AR-1248-4

R.T.: 6.384 min
 Delta R.T.: 0.000 min
 Response: 16119770
 Conc: 244.03 ng/ml



#24 AR-1248-4

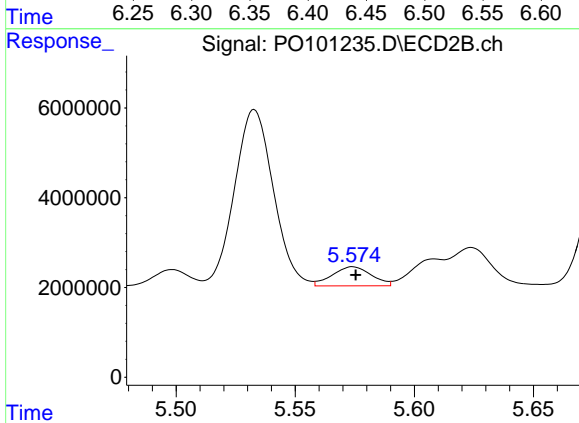
R.T.: 5.178 min
 Delta R.T.: 0.000 min
 Response: 11968743
 Conc: 181.31 ng/ml



#25 AR-1248-5

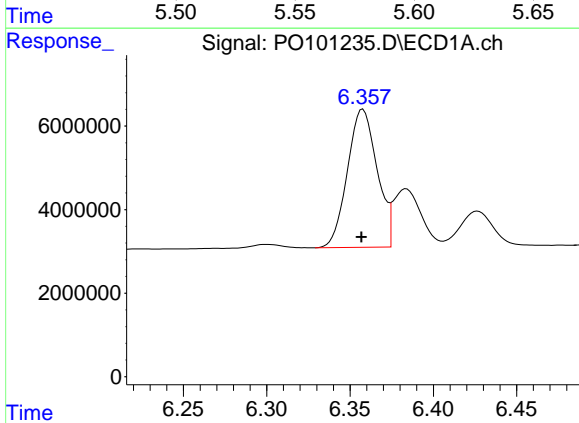
R.T.: 6.427 min
 Delta R.T.: 0.003 min
 Response: 11681669
 Conc: 183.25 ng/ml

Instrument :
 ECD_O
 ClientSampleId :
 ICVPO012224AR1254



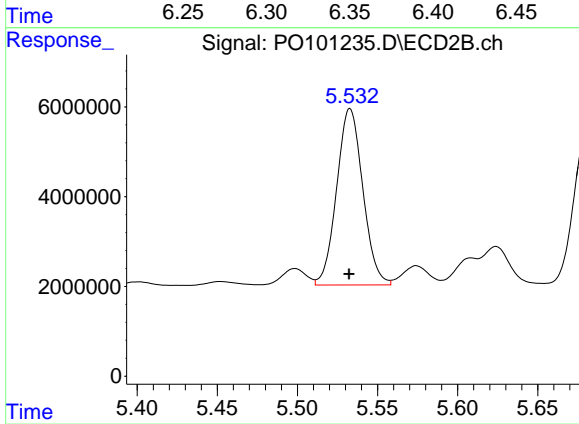
#25 AR-1248-5

R.T.: 5.574 min
 Delta R.T.: -0.001 min
 Response: 4865215
 Conc: 96.60 ng/ml



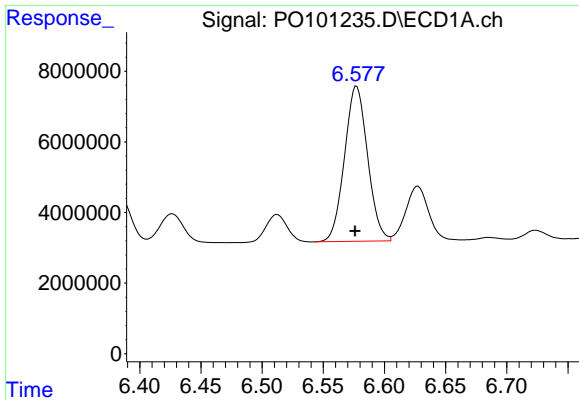
#26 AR-1254-1

R.T.: 6.358 min
 Delta R.T.: 0.000 min
 Response: 40994378
 Conc: 468.28 ng/ml



#26 AR-1254-1

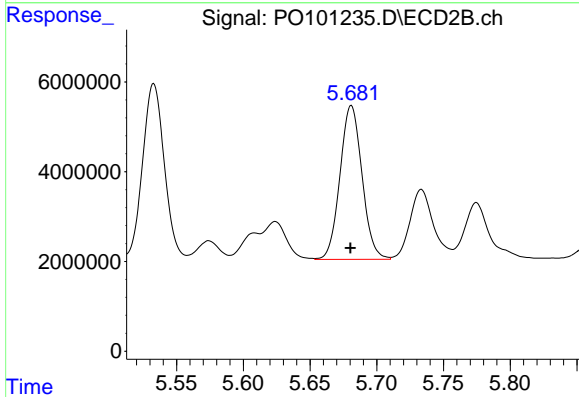
R.T.: 5.533 min
 Delta R.T.: 0.000 min
 Response: 44704612
 Conc: 462.25 ng/ml



#27 AR-1254-2

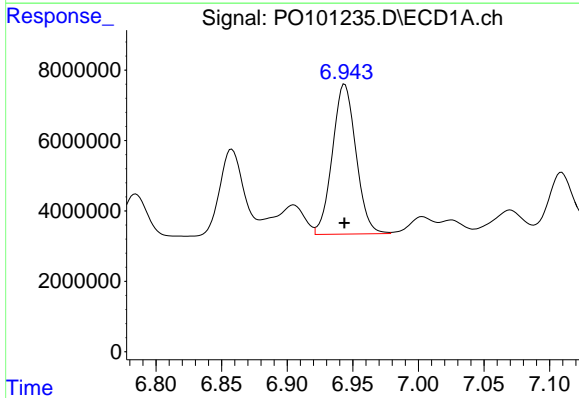
R.T.: 6.577 min
 Delta R.T.: 0.001 min
 Response: 57802117
 Conc: 461.91 ng/ml

Instrument :
 ECD_O
 ClientSampleId :
 ICVPO012224AR1254



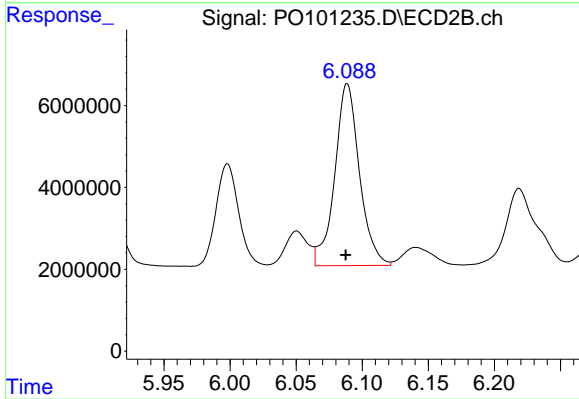
#27 AR-1254-2

R.T.: 5.681 min
 Delta R.T.: 0.000 min
 Response: 39457672
 Conc: 463.86 ng/ml



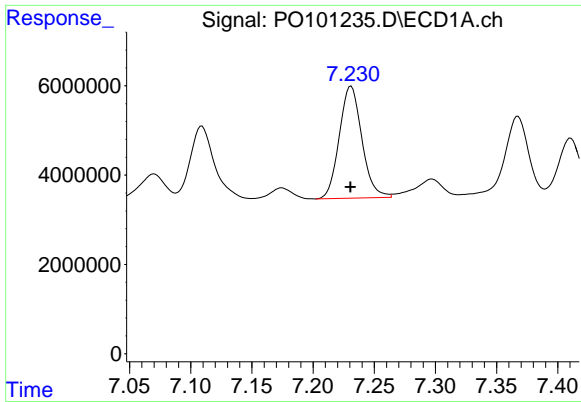
#28 AR-1254-3

R.T.: 6.944 min
 Delta R.T.: 0.000 min
 Response: 53352520
 Conc: 466.57 ng/ml



#28 AR-1254-3

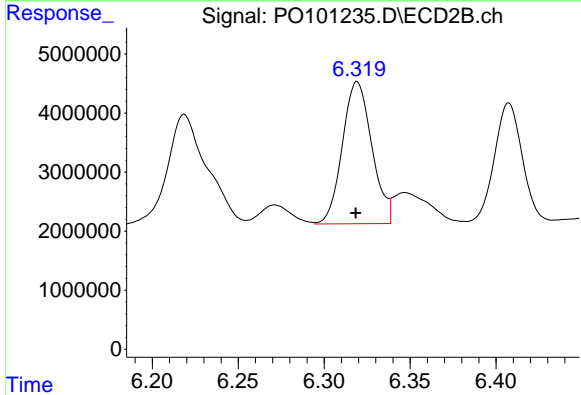
R.T.: 6.089 min
 Delta R.T.: 0.001 min
 Response: 57847717
 Conc: 468.09 ng/ml



#29 AR-1254-4

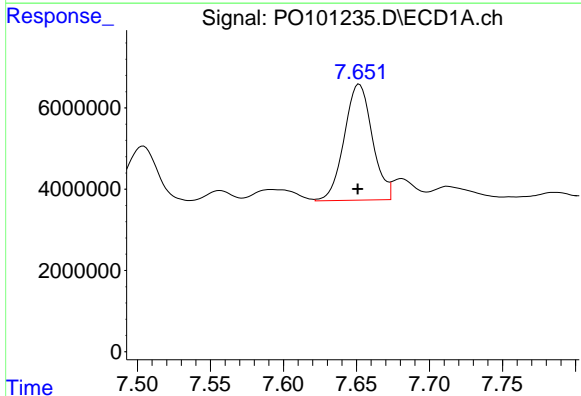
R.T.: 7.231 min
 Delta R.T.: 0.000 min
 Response: 32228220
 Conc: 463.67 ng/ml

Instrument :
 ECD_O
 ClientSampleId :
 ICVPO012224AR1254



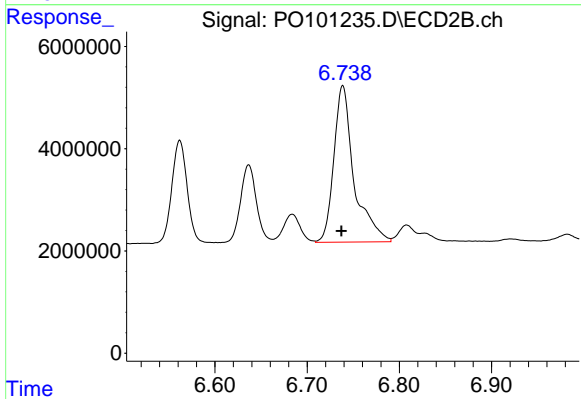
#29 AR-1254-4

R.T.: 6.319 min
 Delta R.T.: 0.000 min
 Response: 28714498
 Conc: 471.15 ng/ml



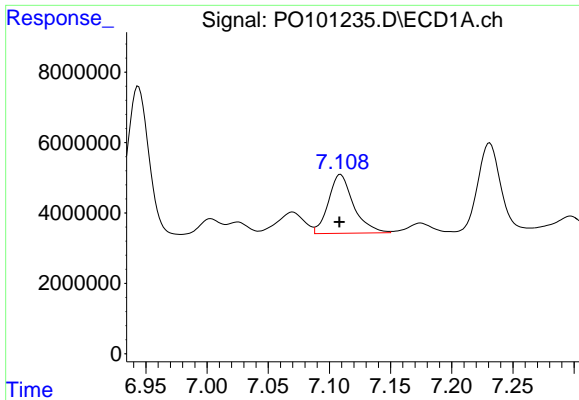
#30 AR-1254-5

R.T.: 7.652 min
 Delta R.T.: 0.001 min
 Response: 38169583
 Conc: 461.58 ng/ml



#30 AR-1254-5

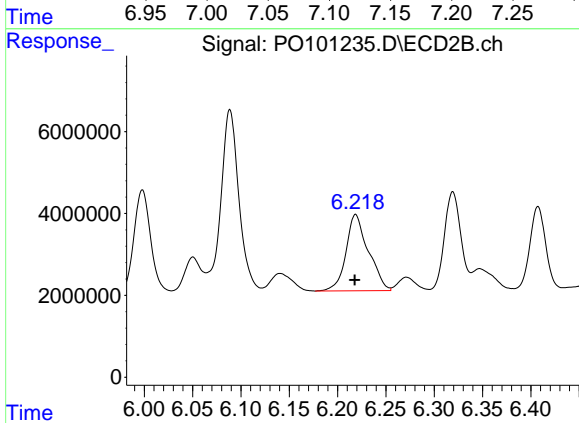
R.T.: 6.739 min
 Delta R.T.: 0.001 min
 Response: 46574240
 Conc: 460.30 ng/ml



#31 AR-1260-1

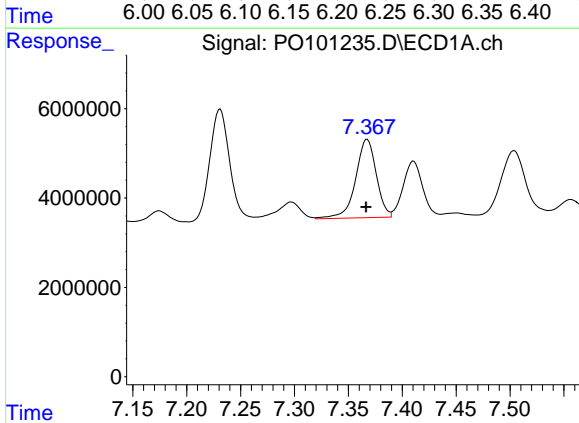
R.T.: 7.109 min
 Delta R.T.: 0.000 min
 Response: 23884323
 Conc: 248.73 ng/ml

Instrument :
 ECD_O
 ClientSampleId :
 ICVPO012224AR1254



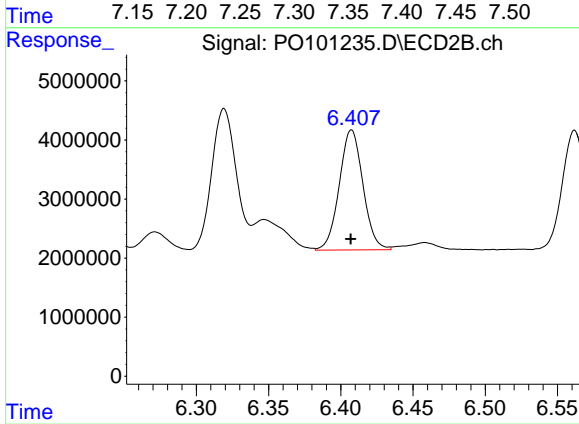
#31 AR-1260-1

R.T.: 6.219 min
 Delta R.T.: 0.000 min
 Response: 30030050
 Conc: 329.59 ng/ml



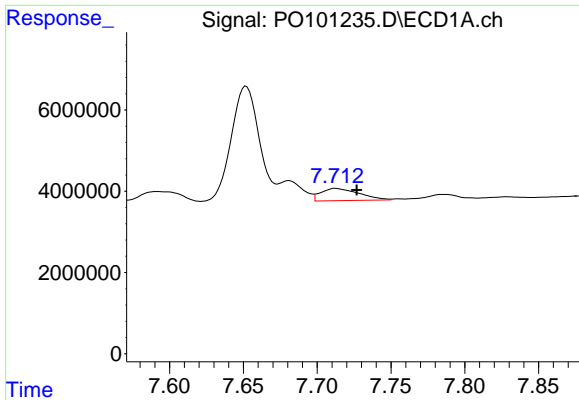
#32 AR-1260-2

R.T.: 7.367 min
 Delta R.T.: 0.001 min
 Response: 23390522
 Conc: 246.26 ng/ml



#32 AR-1260-2

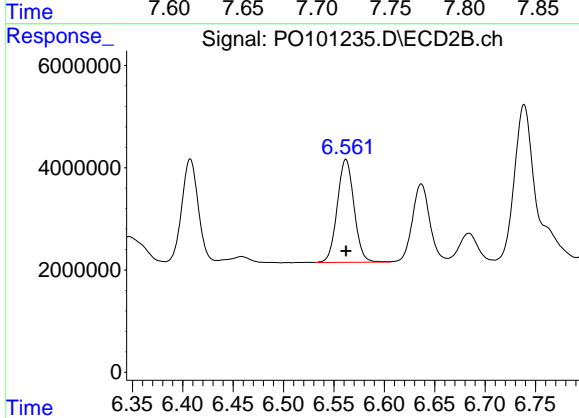
R.T.: 6.407 min
 Delta R.T.: 0.000 min
 Response: 23206060
 Conc: 239.42 ng/ml



#33 AR-1260-3

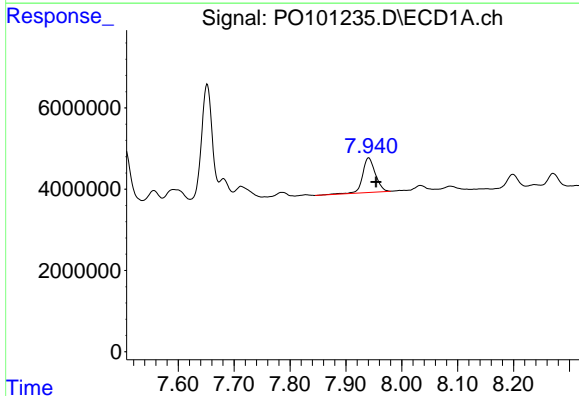
R.T.: 7.713 min
 Delta R.T.: -0.014 min
 Response: 5421560
 Conc: 72.11 ng/ml

Instrument :
 ECD_O
 ClientSampleId :
 ICVPO012224AR1254



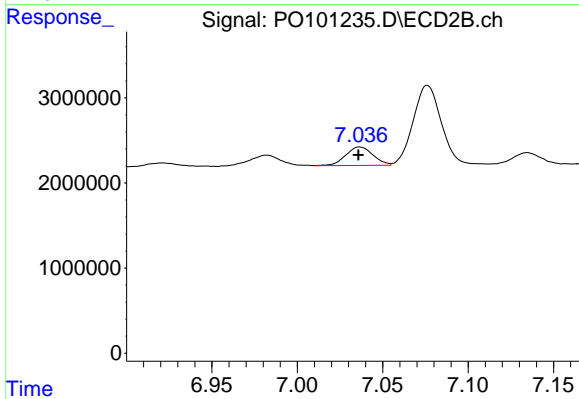
#33 AR-1260-3

R.T.: 6.562 min
 Delta R.T.: 0.000 min
 Response: 23331155
 Conc: 252.81 ng/ml



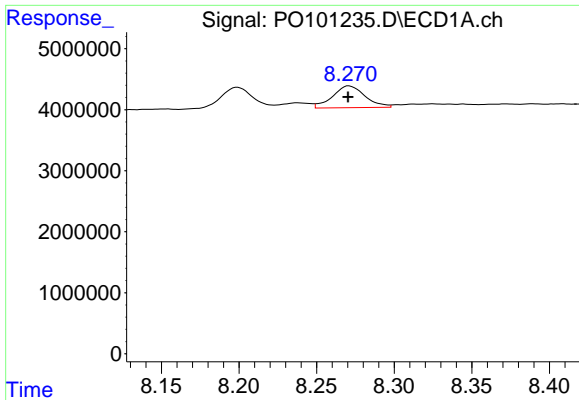
#34 AR-1260-4

R.T.: 7.941 min
 Delta R.T.: -0.013 min
 Response: 13589275
 Conc: 175.49 ng/ml



#34 AR-1260-4

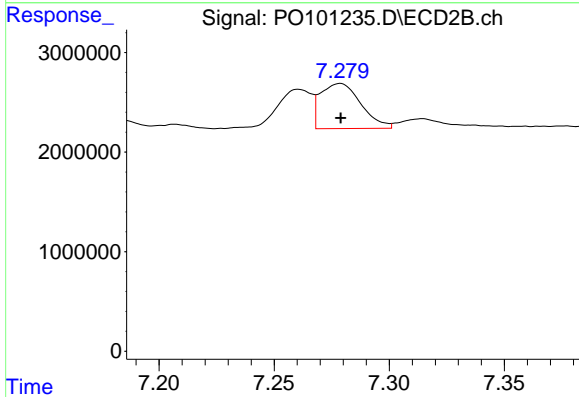
R.T.: 7.037 min
 Delta R.T.: 0.000 min
 Response: 2438332
 Conc: 32.76 ng/ml



#35 AR-1260-5

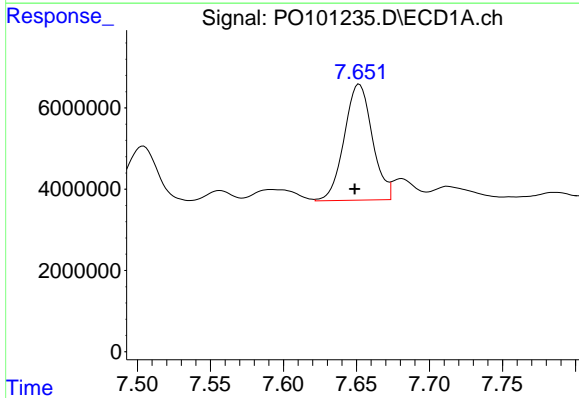
R.T.: 8.271 min
Delta R.T.: 0.000 min
Response: 5170280
Conc: 37.29 ng/ml

Instrument :
ECD_O
ClientSampleId :
ICVPO012224AR1254



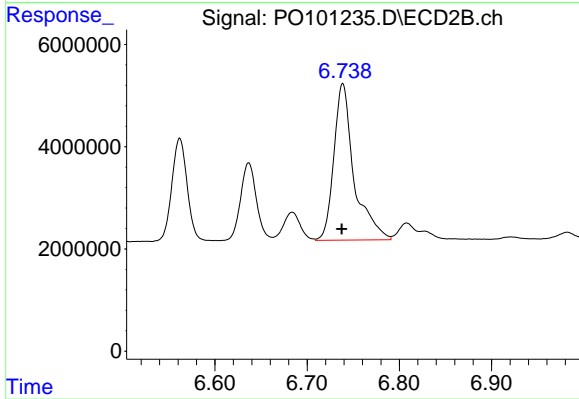
#35 AR-1260-5

R.T.: 7.279 min
Delta R.T.: 0.000 min
Response: 5526752
Conc: 39.61 ng/ml



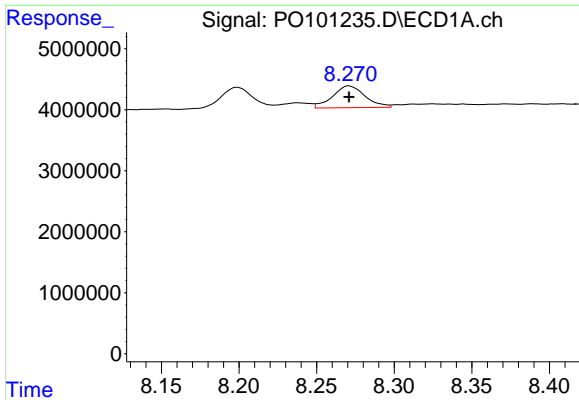
#36 AR-1262-1

R.T.: 7.652 min
Delta R.T.: 0.003 min
Response: 38169583
Conc: 487.26 ng/ml



#36 AR-1262-1

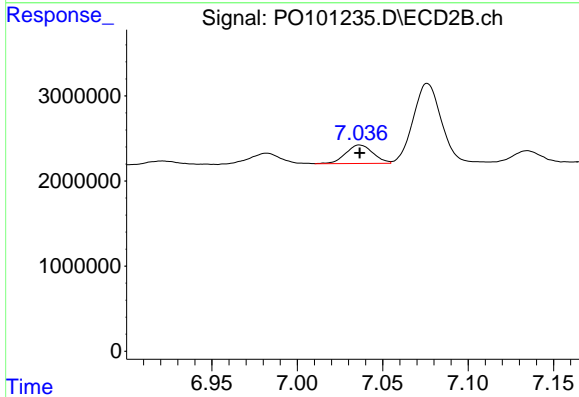
R.T.: 6.739 min
Delta R.T.: 0.001 min
Response: 46574240
Conc: 752.35 ng/ml



#37 AR-1262-2

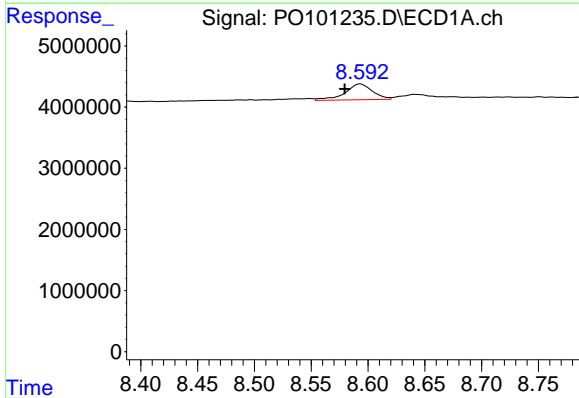
R.T.: 8.271 min
 Delta R.T.: 0.000 min
 Response: 5170280
 Conc: 27.85 ng/ml

Instrument :
 ECD_O
 ClientSampleId :
 ICVPO012224AR1254



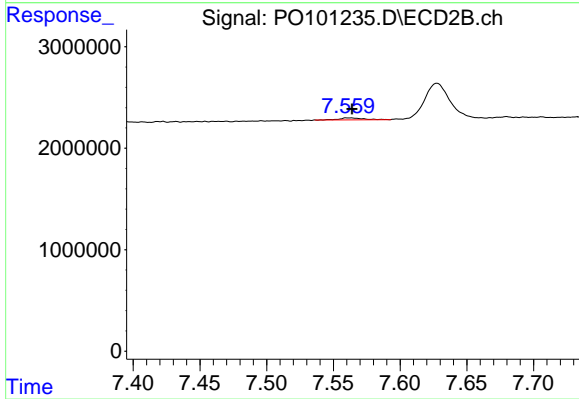
#37 AR-1262-2

R.T.: 7.037 min
 Delta R.T.: 0.000 min
 Response: 2438332
 Conc: 21.63 ng/ml



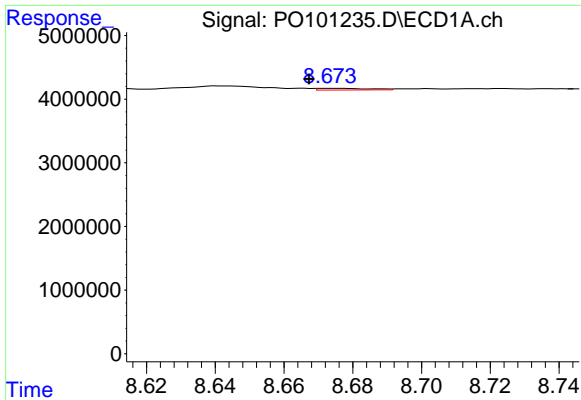
#38 AR-1262-3

R.T.: 8.593 min
 Delta R.T.: 0.014 min
 Response: 4350640
 Conc: 33.11 ng/ml



#38 AR-1262-3

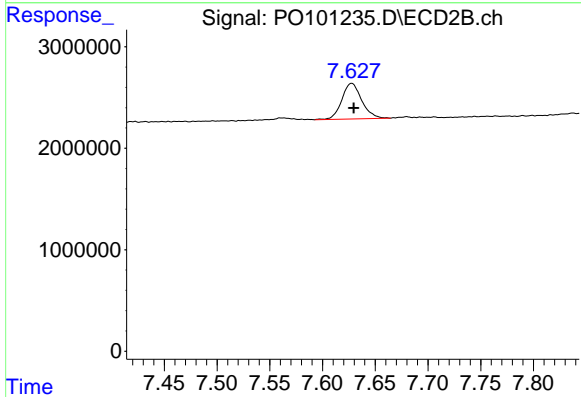
R.T.: 7.562 min
 Delta R.T.: -0.002 min
 Response: 223948
 Conc: 2.67 ng/ml



#39 AR-1262-4

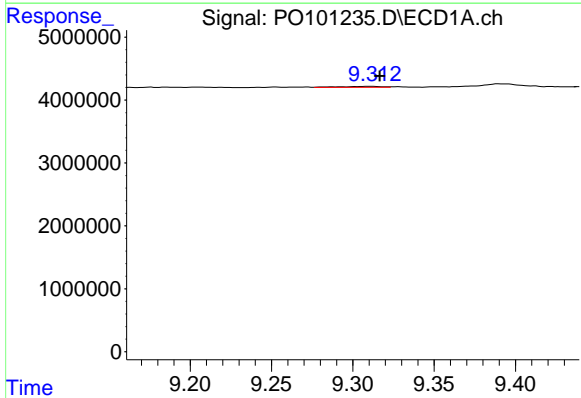
R.T.: 8.674 min
 Delta R.T.: 0.006 min
 Response: 275406
 Conc: 2.69 ng/ml

Instrument :
 ECD_O
 ClientSampleId :
 ICVPO012224AR1254



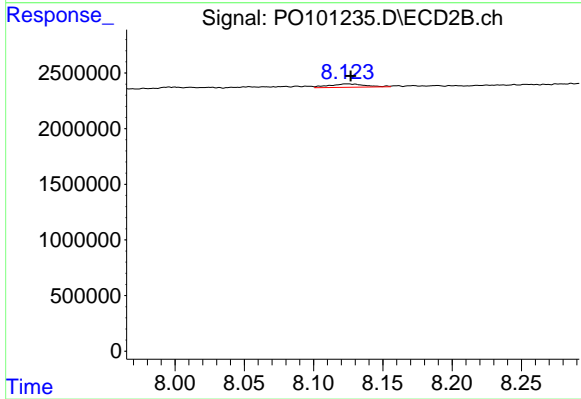
#39 AR-1262-4

R.T.: 7.628 min
 Delta R.T.: -0.002 min
 Response: 4608726
 Conc: 32.62 ng/ml



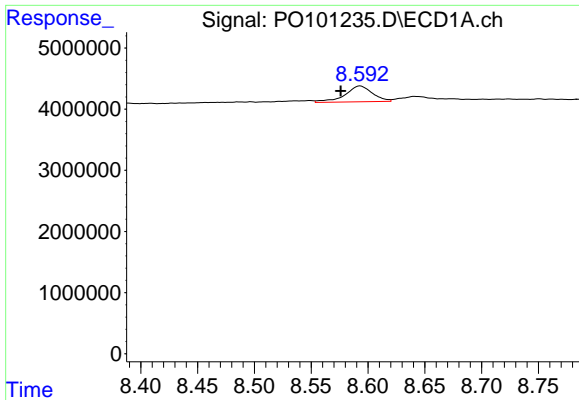
#40 AR-1262-5

R.T.: 9.312 min
 Delta R.T.: -0.005 min
 Response: 274038
 Conc: 4.47 ng/ml



#40 AR-1262-5

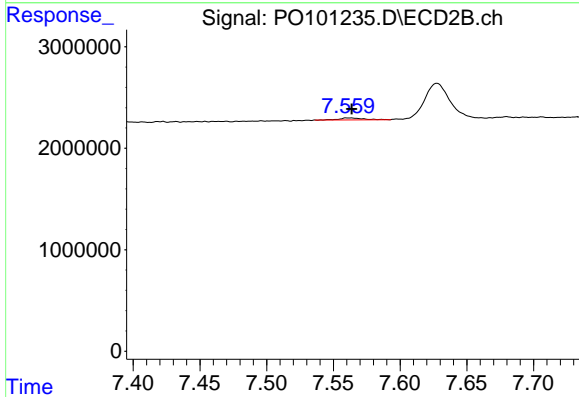
R.T.: 8.124 min
 Delta R.T.: -0.002 min
 Response: 540696
 Conc: 9.15 ng/ml



#41 AR-1268-1

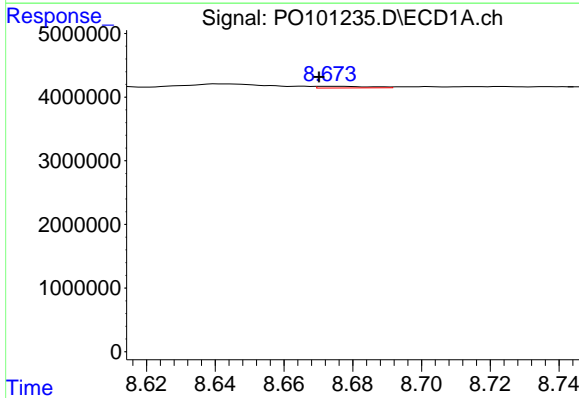
R.T.: 8.593 min
 Delta R.T.: 0.017 min
 Response: 4350640
 Conc: 19.43 ng/ml

Instrument :
 ECD_O
 ClientSampleId :
 ICVPO012224AR1254



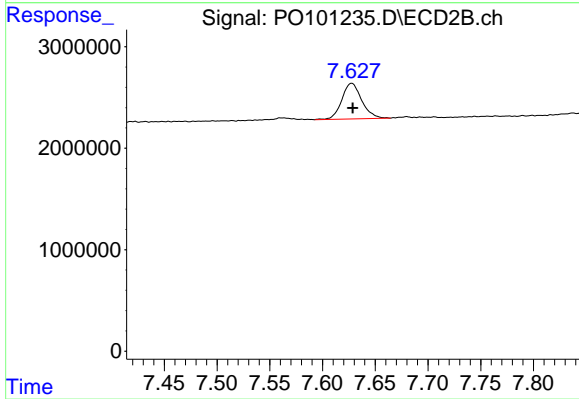
#41 AR-1268-1

R.T.: 7.562 min
 Delta R.T.: -0.002 min
 Response: 223948
 Conc: 1.09 ng/ml



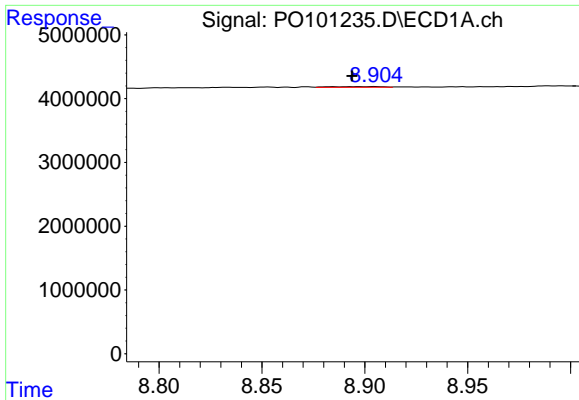
#42 AR-1268-2

R.T.: 8.674 min
 Delta R.T.: 0.003 min
 Response: 275406
 Conc: 1.39 ng/ml



#42 AR-1268-2

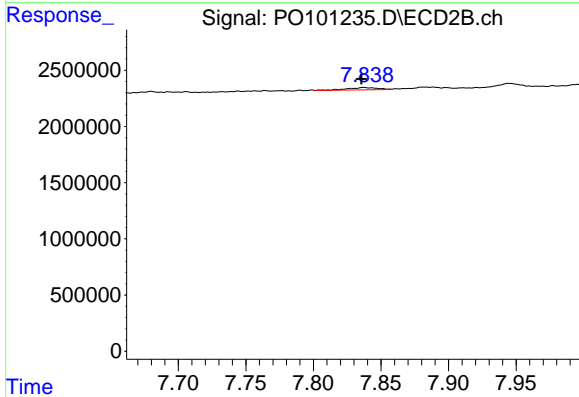
R.T.: 7.628 min
 Delta R.T.: 0.000 min
 Response: 4608726
 Conc: 25.08 ng/ml



#43 AR-1268-3

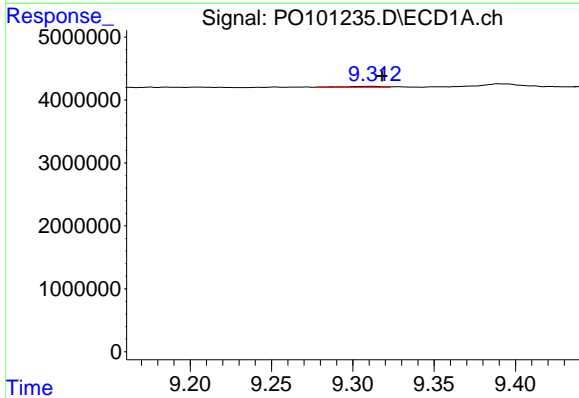
R.T.: 8.904 min
 Delta R.T.: 0.011 min
 Response: 216435
 Conc: 1.22 ng/ml

Instrument :
 ECD_O
 ClientSampleId :
 ICVPO012224AR1254



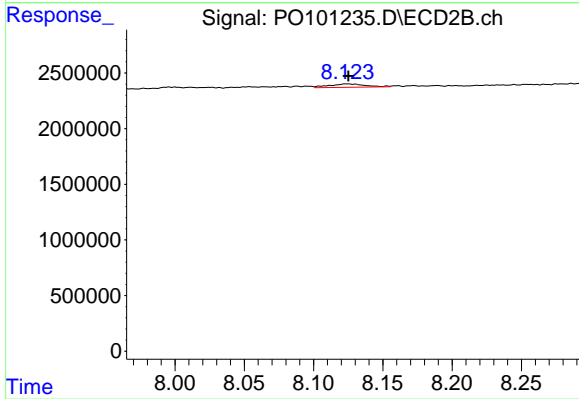
#43 AR-1268-3

R.T.: 7.837 min
 Delta R.T.: 0.002 min
 Response: 317150
 Conc: 1.84 ng/ml



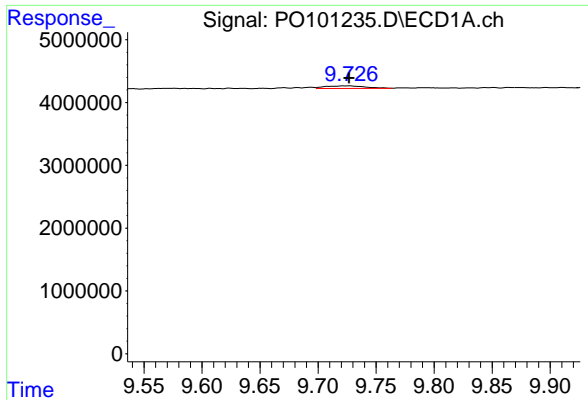
#44 AR-1268-4

R.T.: 9.312 min
 Delta R.T.: -0.006 min
 Response: 274038
 Conc: 4.51 ng/ml



#44 AR-1268-4

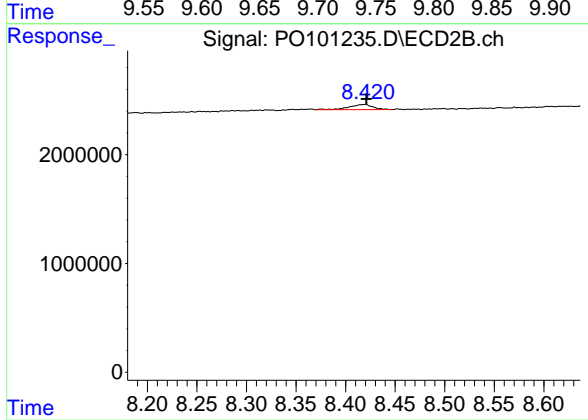
R.T.: 8.124 min
 Delta R.T.: -0.001 min
 Response: 540696
 Conc: 8.97 ng/ml



#45 AR-1268-5

R.T.: 9.727 min
Delta R.T.: 0.000 min
Response: 981315
Conc: 1.91 ng/ml

Instrument :
ECD_O
ClientSampleId :
ICVPO012224AR1254



#45 AR-1268-5

R.T.: 8.419 min
Delta R.T.: -0.002 min
Response: 802463
Conc: 1.75 ng/ml