

Data Path : Z:\pestpcbsrv\HPCHEM1\ECD_0\Data\P0012319\
 Data File : P0053538.D
 Signal(s) : Signal #1: ECD1A.CH Signal #2: ECD2B.CH
 Acq On : 23 Jan 2019 16:07
 Operator : SM/SJ
 Sample : K1217-01 10X
 Misc :
 ALS Vial : 8 Sample Multiplier: 1

Instrument :
 ECD_0
ClientSampleId :
 DIELECTRIC-FLUIDS

Manual Integrations
APPROVED
 Sohil
 1/24/2019 8:20:57 AM

Integration File signal 1: autoint1.e
 Integration File signal 2: autoint2.e
 Quant Time: Jan 23 23:50:39 2019
 Quant Method : Z:\pestpcbsrv\HPCHEM1\ECD_0\methods\P0012319.M
 Quant Title : GC EXTRACTABLES
 QLast Update : Wed Jan 23 12:54:56 2019
 Response via : Initial Calibration
 Integrator: ChemStation 6890 Scale Mode: Small noise peaks clipped

Volume Inj. : 2 µl
 Signal #1 Phase : ZB-MR1 Signal #2 Phase: ZB-MR2
 Signal #1 Info : 30Mx0.32mmx 0.50µ Signal #2 Info : 30M x 0.32mm x 0.25µm

| Compound | RT#1 | RT#2 | Resp#1 | Resp#2 | ng/ml | ng/ml |
|-----------------------------|-------|-------|---------|--------|--------|--------|
| ----- | | | | | | |
| System Monitoring Compounds | | | | | | |
| 1) SA Tetrachlo... | 4.128 | 3.182 | 1509374 | 320252 | 1.564m | 1.565m |
| 2) SA Decachlor... | 9.546 | 7.803 | 1797199 | 524893 | 2.412 | 2.488m |

Target Compounds

(f)=RT Delta > 1/2 Window (#)=Amounts differ by > 25% (m)=manual int.

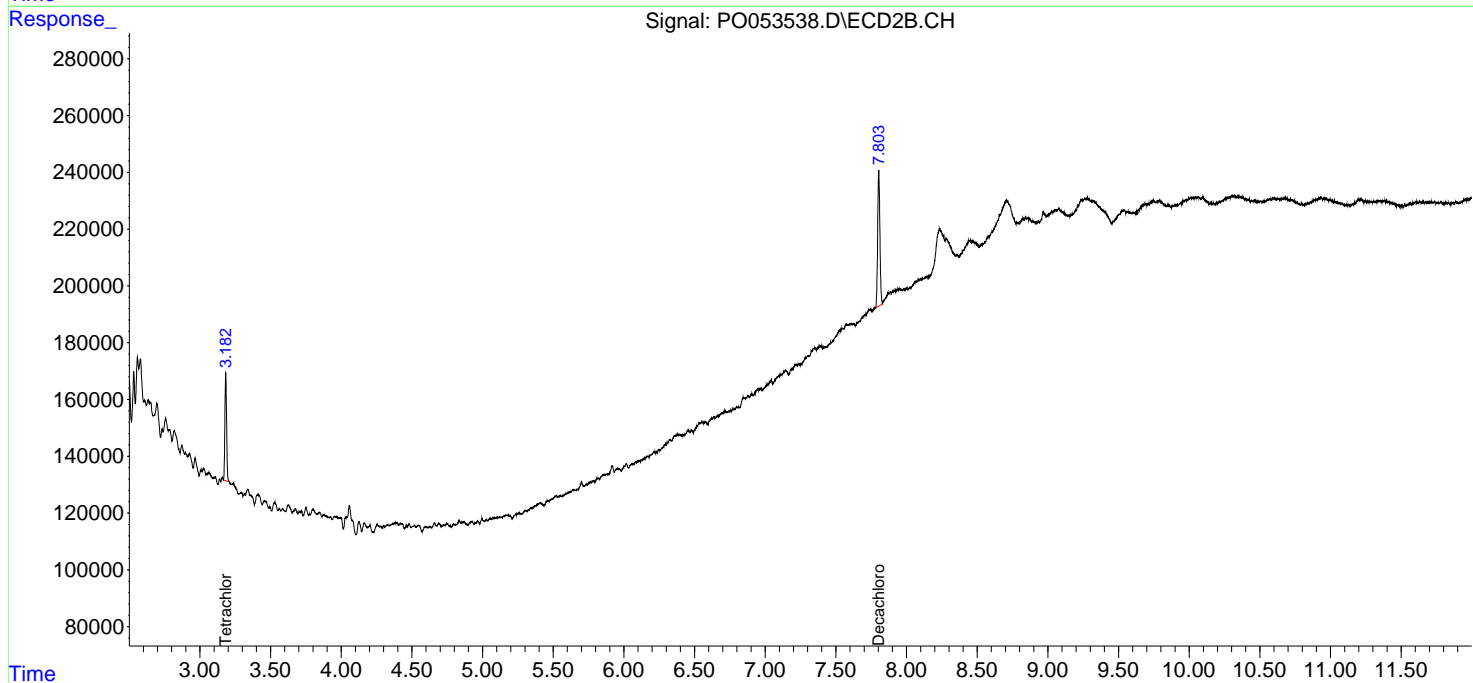
Data Path : Z:\pestpcbsrv\HPCHEM1\ECD_0\Data\P0012319\
 Data File : P0053538.D
 Signal(s) : Signal #1: ECD1A.CH Signal #2: ECD2B.CH
 Acq On : 23 Jan 2019 16:07
 Operator : SM/SJ
 Sample : K1217-01 10X
 Misc :
 ALS Vial : 8 Sample Multiplier: 1

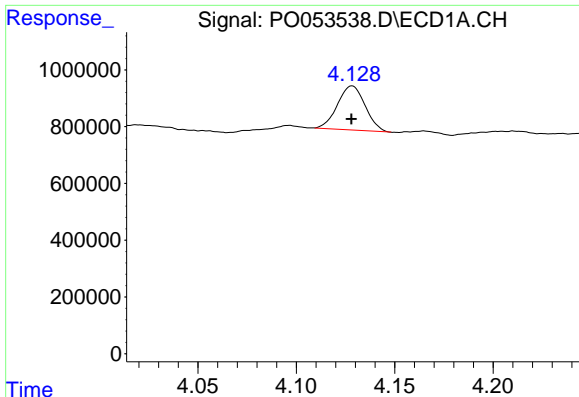
Instrument :
 ECD_O
Client Sampled :
 DIELECTRIC-FLUIDS

Manual Integrations
APPROVED
 Sohil
 1/24/2019 8:20:57 AM

Integration File signal 1: autoint1.e
 Integration File signal 2: autoint2.e
 Quant Time: Jan 23 23:50:39 2019
 Quant Method : Z:\pestpcbsrv\HPCHEM1\ECD_0\methods\P0012319.M
 Quant Title : GC EXTRACTABLES
 QLast Update : Wed Jan 23 12:54:56 2019
 Response via : Initial Calibration
 Integrator: ChemStation 6890 Scale Mode: Small noise peaks clipped

Volume Inj. : 2 µl
 Signal #1 Phase : ZB-MR1 Signal #2 Phase: ZB-MR2
 Signal #1 Info : 30Mx0.32mmx 0.50µ Signal #2 Info : 30M x 0.32mm x 0.25µm





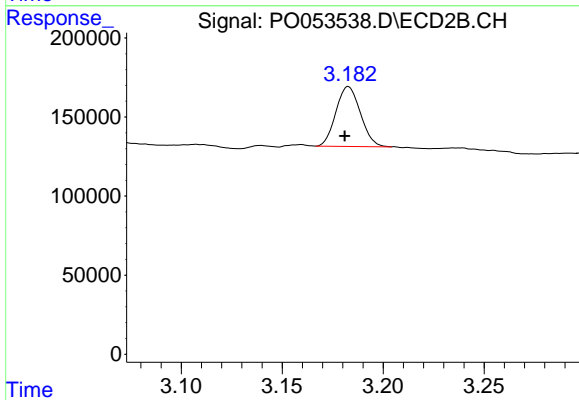
#1 Tetrachloro-m-xylene

R.T.: 4.128 min
 Delta R.T.: 0.000 min
 Response: 1509374
 Conc: 1.56 ng/ml m

Instrument :
 ECD_O
 ClientSampleId :
 DIELECTRIC-FLUIDS

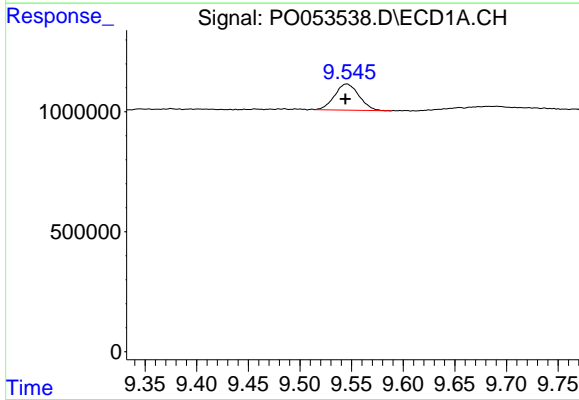
Manual Integrations
 APPROVED

Sohil
 1/24/2019 8:20:57 AM



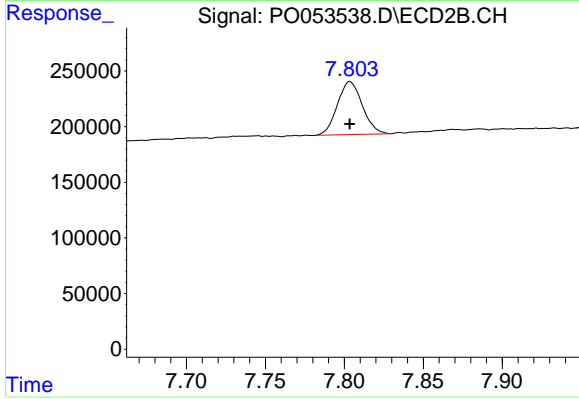
#1 Tetrachloro-m-xylene

R.T.: 3.182 min
 Delta R.T.: 0.001 min
 Response: 320252
 Conc: 1.56 ng/ml m



#2 Decachlorobiphenyl

R.T.: 9.546 min
 Delta R.T.: 0.001 min
 Response: 1797199
 Conc: 2.41 ng/ml



#2 Decachlorobiphenyl

R.T.: 7.803 min
 Delta R.T.: 0.000 min
 Response: 524893
 Conc: 2.49 ng/ml m