

Data Path : Z:\pestpcbsrv\HPCHEM1\ECD_0\Data\P0012320\
 Data File : P0065862.D
 Signal(s) : Signal #1: ECD1A.CH Signal #2: ECD2B.CH
 Acq On : 23 Jan 2020 21:33
 Operator : DD\AJ
 Sample : P0012320ICV500
 Misc :
 ALS Vial : 15 Sample Multiplier: 1

Instrument :
 ECD_0
 ClientSampleId :
 ICVPO012320

Integration File signal 1: autoint1.e
 Integration File signal 2: autoint2.e
 Quant Time: Jan 24 04:00:48 2020
 Quant Method : Z:\pestpcbsrv\HPCHEM1\ECD_0\methods\P0012320.M
 Quant Title : GC EXTRACTABLES
 QLast Update : Fri Jan 24 03:54:38 2020
 Response via : Initial Calibration
 Integrator: ChemStation 6890 Scale Mode: Small noise peaks clipped

Volume Inj. : 2 µl
 Signal #1 Phase : ZB-MR1 Signal #2 Phase: ZB-MR2
 Signal #1 Info : 30Mx0.32mmx 0.50µ Signal #2 Info : 30M x 0.32mm x 0.25µm

Compound	RT#1	RT#2	Resp#1	Resp#2	ng/ml	ng/ml

System Monitoring Compounds						
1) SA Tetrachlo...	4.154	3.431	1117525	1346795	48.194	50.705
2) SA Decachlor...	9.649	8.328	2032513	2420340	48.827	49.805
Target Compounds						
3) L1 AR-1016-1	5.304	4.489	524010	618718	477.136	482.974
4) L1 AR-1016-2	5.325	4.507	785642	920770	475.037	489.751
5) L1 AR-1016-3	5.386	4.679	484386	483681	475.626	498.457
6) L1 AR-1016-4	5.483	4.721	401295	413632	478.572	503.887
7) L1 AR-1016-5	5.774	4.930	415045	531835	485.914	493.289
8) L2 AR-1221-1	4.359	3.639	35201	46786	121.773	135.897
9) L2 AR-1221-2	4.448	3.723	55536	69885	251.770	275.015
10) L2 AR-1221-3	4.522	3.797	229928	282832	320.494	343.676
11) L3 AR-1232-1	4.522	3.797	229928	282832	423.380	444.339
12) L3 AR-1232-2	5.039	4.507	340405	920770	1178.612	1197.933
13) L3 AR-1232-3	5.325	4.679	785642	483681	1166.376	1257.060
14) L3 AR-1232-4	5.483	4.762	401295	494496	1194.168	1404.282
15) L3 AR-1232-5	5.573	4.930	324954	531835	1310.058	1334.667
16) L4 AR-1242-1	5.304	4.489	524010	618718	650.216	666.580
17) L4 AR-1242-2	5.325	4.507	785642	920770	657.145	665.744
18) L4 AR-1242-3	5.386	4.679	484386	483681	645.954	657.212
19) L4 AR-1242-4	5.483	4.762	401295	494496	655.997	664.185
20) L4 AR-1242-5	6.210	5.276	71748	431136	86.166	389.456 #
21) L5 AR-1248-1	5.304	4.489	524010	618718	848.537	867.240
22) L5 AR-1248-2	5.573	4.721	324954	413632	369.070	408.079
23) L5 AR-1248-3	5.774	4.762	415045	494496	402.239	481.093
24) L5 AR-1248-4	6.172	4.930	89934	531835	66.747	416.770 #
25) L5 AR-1248-5	6.210	5.316	71748	71752	55.513	51.408
26) L6 AR-1254-1	6.145	5.276	313782	431136	236.405	192.815
27) L6 AR-1254-2	6.361	5.423	367680	423482	168.784	206.176
28) L6 AR-1254-3	6.724	5.834	230429	844059	94.760	248.907 #
29) L6 AR-1254-4	7.007	6.047	175463	126448	83.724	55.203 #
30) L6 AR-1254-5	7.420	6.459	1420012	1644272	661.820	508.462
31) L7 AR-1260-1	6.885	5.948	923018	1180612	476.386	487.398
32) L7 AR-1260-2	7.141	6.136	1261041	1536169	480.888	484.803
33) L7 AR-1260-3	7.496	6.286	1070509	1363964	492.589	493.261
34) L7 AR-1260-4	7.719	6.752	1094988	1226753	493.977	497.073
35) L7 AR-1260-5	8.024	6.995	2381892	3039568	491.924	500.005
36) L8 AR-1262-1	7.496	6.549	1070509	676451	360.231	488.826 #
37) L8 AR-1262-2	8.024	6.995	2381892	3039568	462.602	480.745
38) L8 AR-1262-3	8.322	7.273	1486410	714637	423.396	279.047 #
39) L8 AR-1262-4	8.390	7.337	426894	2234499	156.147	475.164 #
40) L8 AR-1262-5	8.984	7.829	711558	796845	377.324	378.958
41) L9 AR-1268-1	8.322	7.273	1486410	714637	226.752	91.730 #
42) L9 AR-1268-2	8.390	7.337	426894	2234499	72.358	308.523 #

Data Path : Z:\pestpcbsrv\HPCHEM1\ECD_0\Data\P0012320\
 Data File : P0065862.D
 Signal(s) : Signal #1: ECD1A.CH Signal #2: ECD2B.CH
 Acq On : 23 Jan 2020 21:33
 Operator : DD\AJ
 Sample : P0012320ICV500
 Misc :
 ALS Vial : 15 Sample Multiplier: 1

Instrument :
 ECD_0
 ClientSampleId :
 ICVPO012320

Integration File signal 1: autoint1.e
 Integration File signal 2: autoint2.e
 Quant Time: Jan 24 04:00:48 2020
 Quant Method : Z:\pestpcbsrv\HPCHEM1\ECD_0\methods\P0012320.M
 Quant Title : GC EXTRACTABLES
 QLast Update : Fri Jan 24 03:54:38 2020
 Response via : Initial Calibration
 Integrator: ChemStation 6890 Scale Mode: Small noise peaks clipped

Volume Inj. : 2 µl
 Signal #1 Phase : ZB-MR1 Signal #2 Phase: ZB-MR2
 Signal #1 Info : 30Mx0.32mmx 0.50µ Signal #2 Info : 30M x 0.32mm x 0.25µm

	Compound	RT#1	RT#2	Resp#1	Resp#2	ng/ml	ng/ml
43)	L9 AR-1268-3	8.595	7.539	41433	49597	8.223	8.285
44)	L9 AR-1268-4	8.984	7.829	711558	796845	335.823	326.649
45)	L9 AR-1268-5	9.351	8.098	203074	230582	13.551	12.764

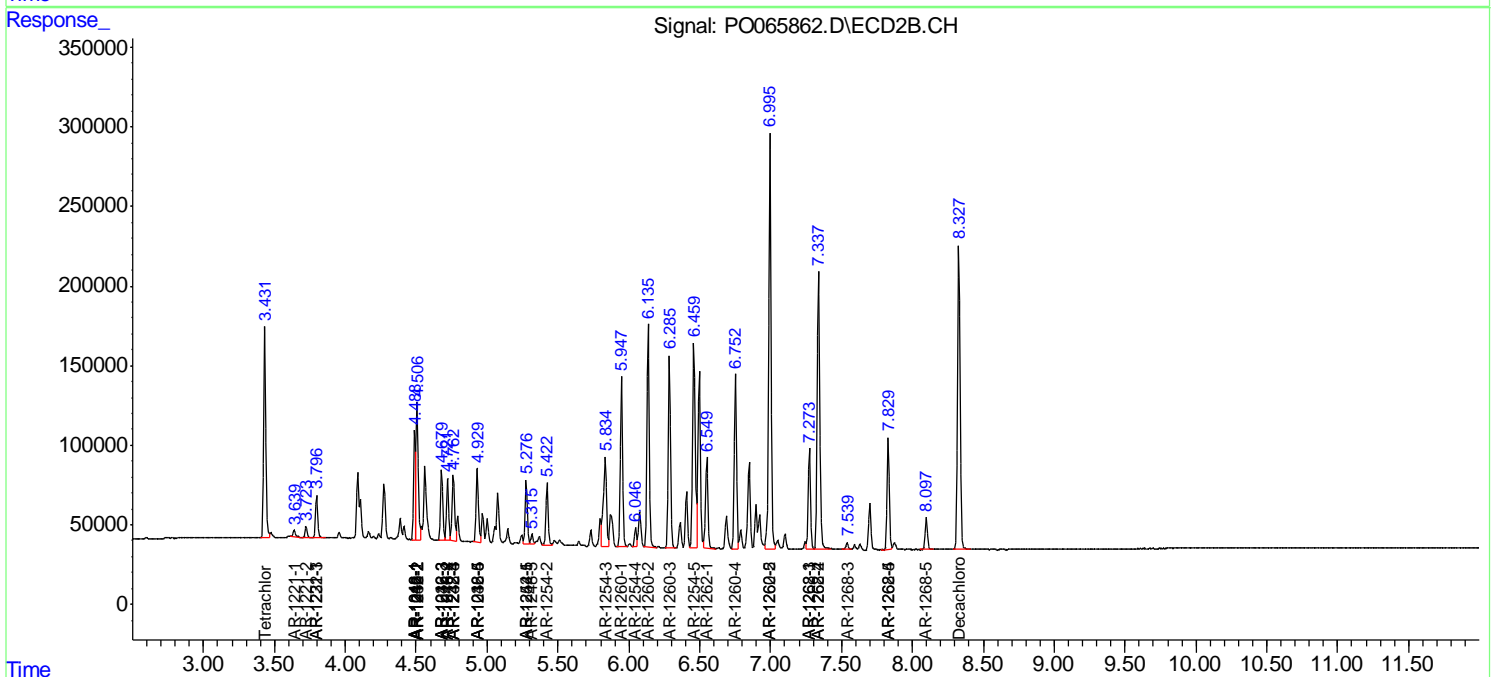
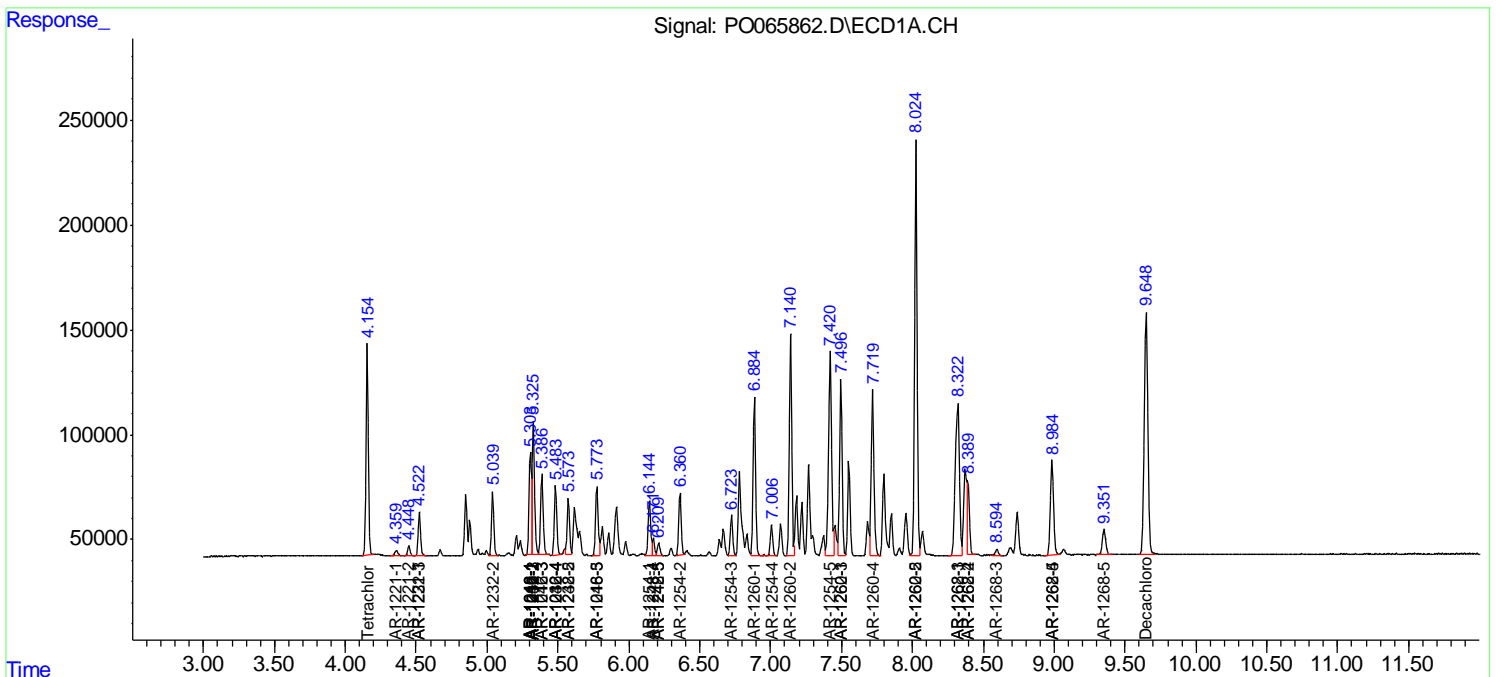
(f)=RT Delta > 1/2 Window (#)=Amounts differ by > 25% (m)=manual int.

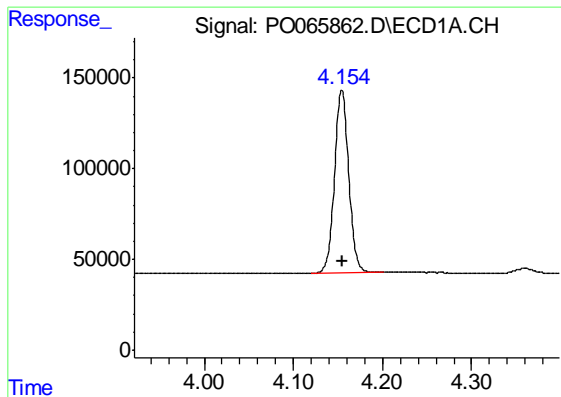
Data Path : Z:\pestpcbsrv\HPCHEM1\ECD_O\Data\PO012320\
 Data File : PO065862.D
 Signal(s) : Signal #1: ECD1A.CH Signal #2: ECD2B.CH
 Acq On : 23 Jan 2020 21:33
 Operator : DD\AJ
 Sample : PO012320ICV500
 Misc :
 ALS Vial : 15 Sample Multiplier: 1

Instrument :
 ECD_O
 Client Sampled :
 ICVPO012320

Integration File signal 1: autoint1.e
 Integration File signal 2: autoint2.e
 Quant Time: Jan 24 04:00:48 2020
 Quant Method : Z:\pestpcbsrv\HPCHEM1\ECD_O\methods\PO012320.M
 Quant Title : GC EXTRACTABLES
 QLast Update : Fri Jan 24 03:54:38 2020
 Response via : Initial Calibration
 Integrator: ChemStation 6890 Scale Mode: Small noise peaks clipped

Volume Inj. : 2 µl
 Signal #1 Phase : ZB-MR1 Signal #2 Phase: ZB-MR2
 Signal #1 Info : 30Mx0.32mmx 0.50µ Signal #2 Info : 30M x 0.32mm x 0.25µm

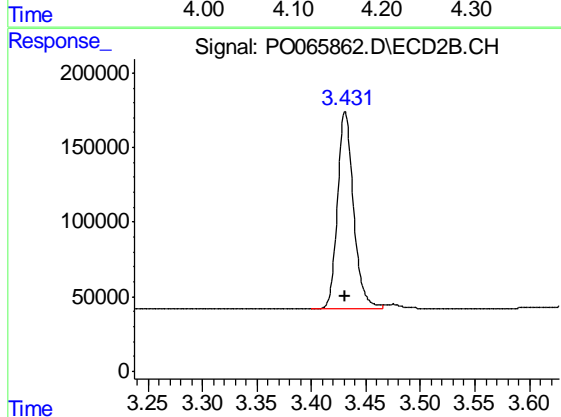




#1 Tetrachloro-m-xylene

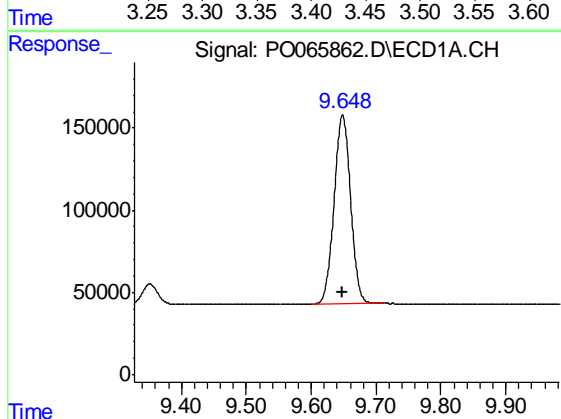
R.T.: 4.154 min
 Delta R.T.: 0.000 min
 Response: 1117525
 Conc: 48.19 ng/ml

Instrument :
 ECD_O
 ClientSampleId :
 ICVPO012320



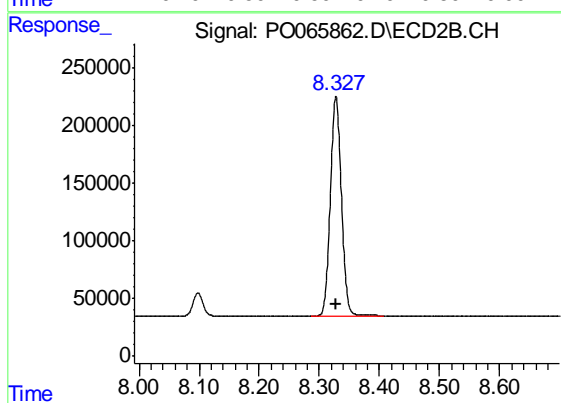
#1 Tetrachloro-m-xylene

R.T.: 3.431 min
 Delta R.T.: 0.000 min
 Response: 1346795
 Conc: 50.70 ng/ml



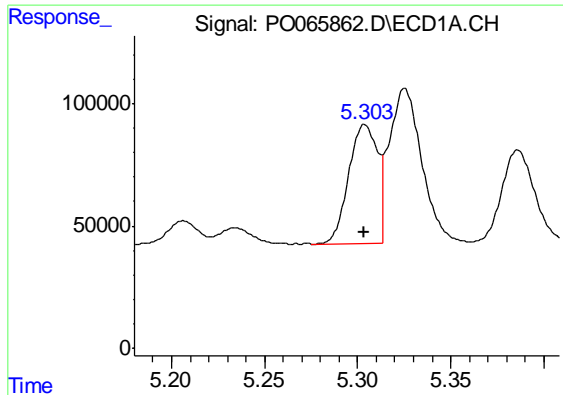
#2 Decachlorobiphenyl

R.T.: 9.649 min
 Delta R.T.: 0.000 min
 Response: 2032513
 Conc: 48.83 ng/ml



#2 Decachlorobiphenyl

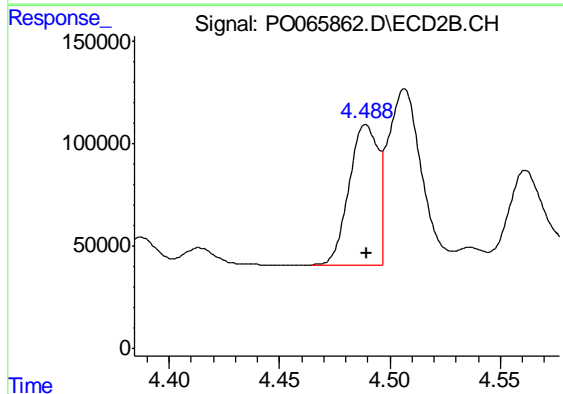
R.T.: 8.328 min
 Delta R.T.: 0.000 min
 Response: 2420340
 Conc: 49.81 ng/ml



#3 AR-1016-1

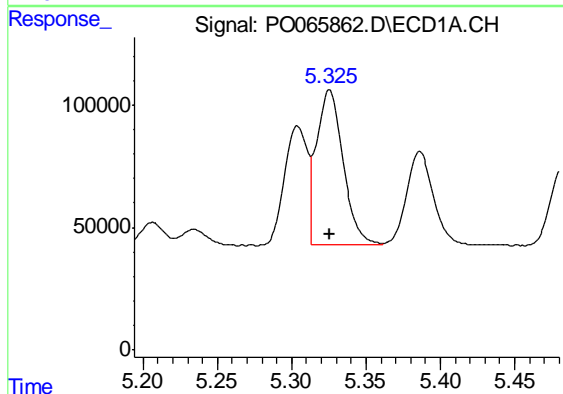
R.T.: 5.304 min
 Delta R.T.: 0.000 min
 Response: 524010
 Conc: 477.14 ng/ml

Instrument :
 ECD_O
 ClientSampled :
 ICVPO012320



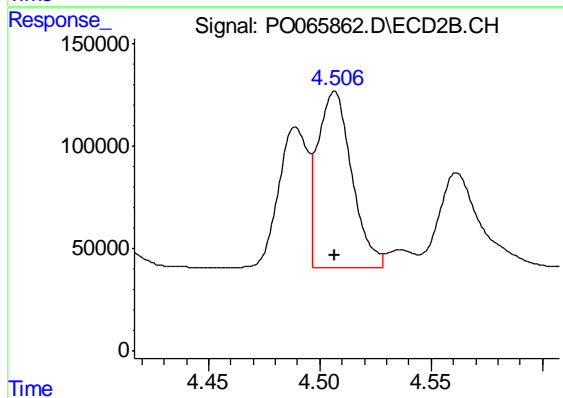
#3 AR-1016-1

R.T.: 4.489 min
 Delta R.T.: 0.000 min
 Response: 618718
 Conc: 482.97 ng/ml



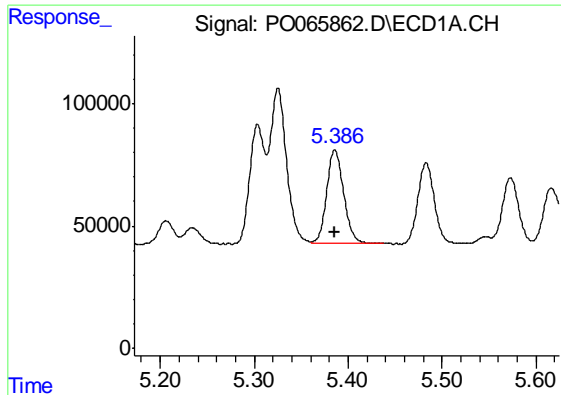
#4 AR-1016-2

R.T.: 5.325 min
 Delta R.T.: 0.000 min
 Response: 785642
 Conc: 475.04 ng/ml



#4 AR-1016-2

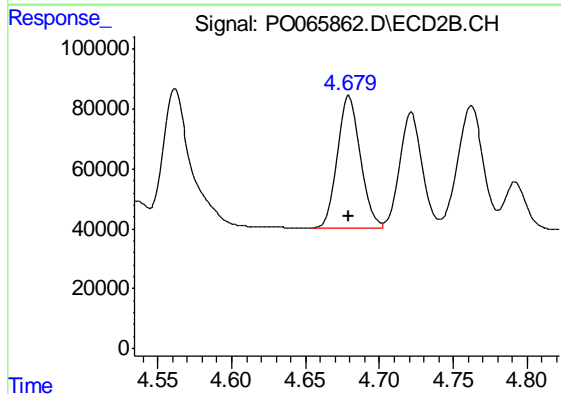
R.T.: 4.507 min
 Delta R.T.: 0.000 min
 Response: 920770
 Conc: 489.75 ng/ml



#5 AR-1016-3

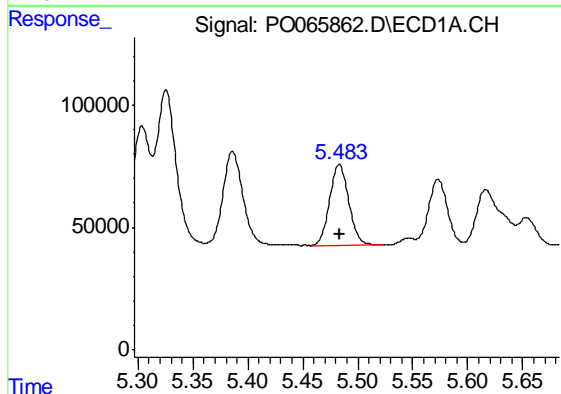
R.T.: 5.386 min
 Delta R.T.: 0.000 min
 Response: 484386
 Conc: 475.63 ng/ml

Instrument :
 ECD_O
 ClientSampleId :
 ICVPO012320



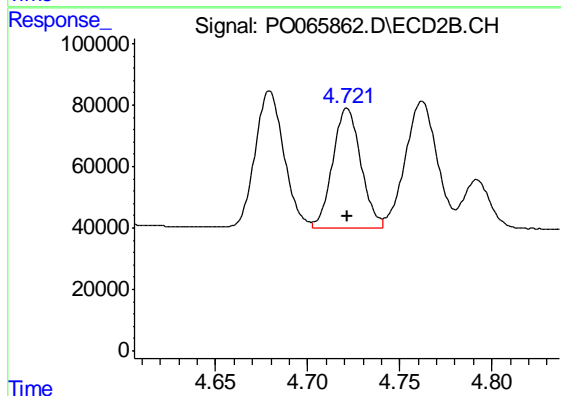
#5 AR-1016-3

R.T.: 4.679 min
 Delta R.T.: 0.000 min
 Response: 483681
 Conc: 498.46 ng/ml



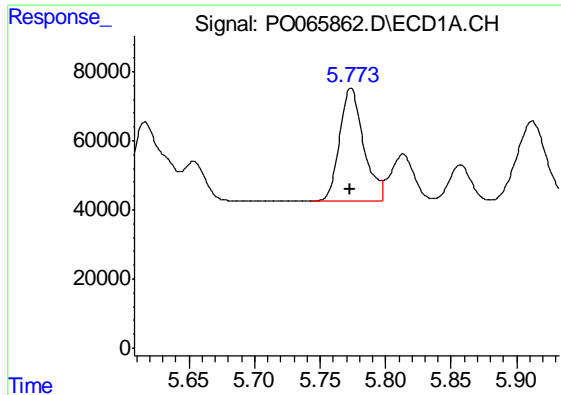
#6 AR-1016-4

R.T.: 5.483 min
 Delta R.T.: 0.000 min
 Response: 401295
 Conc: 478.57 ng/ml



#6 AR-1016-4

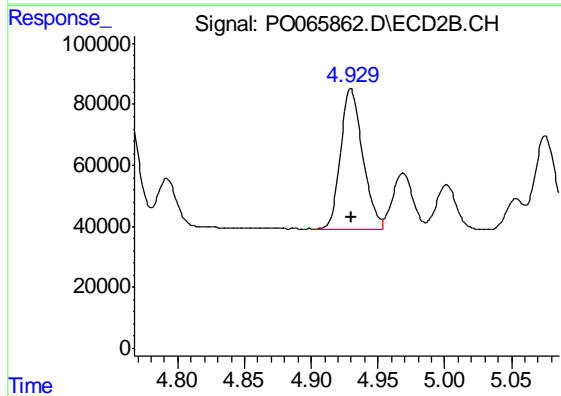
R.T.: 4.721 min
 Delta R.T.: 0.000 min
 Response: 413632
 Conc: 503.89 ng/ml



#7 AR-1016-5

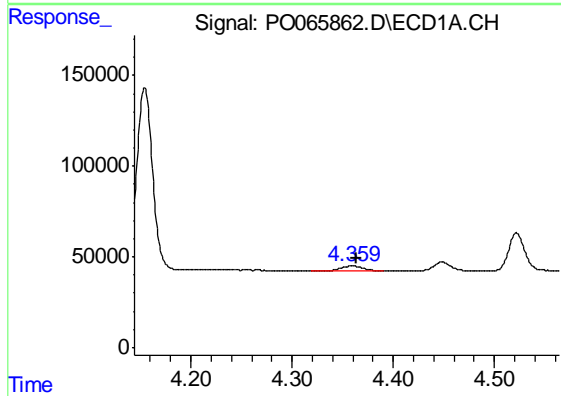
R.T.: 5.774 min
 Delta R.T.: 0.000 min
 Response: 415045
 Conc: 485.91 ng/ml

Instrument :
 ECD_O
 ClientSampleId :
 ICVPO012320



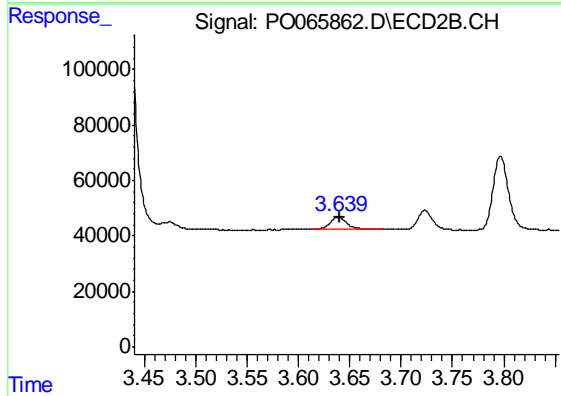
#7 AR-1016-5

R.T.: 4.930 min
 Delta R.T.: 0.000 min
 Response: 531835
 Conc: 493.29 ng/ml



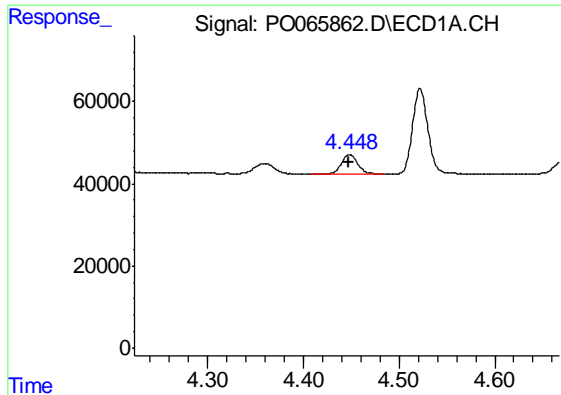
#8 AR-1221-1

R.T.: 4.359 min
 Delta R.T.: -0.004 min
 Response: 35201
 Conc: 121.77 ng/ml



#8 AR-1221-1

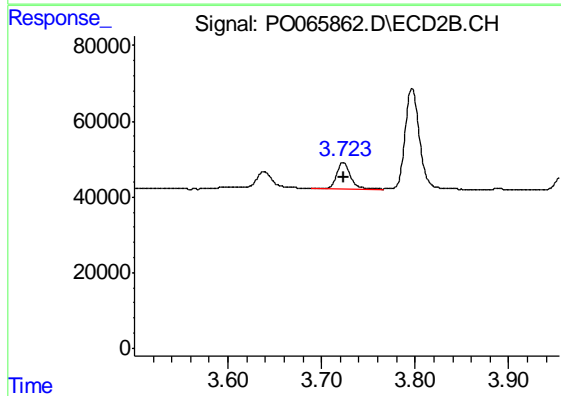
R.T.: 3.639 min
 Delta R.T.: -0.001 min
 Response: 46786
 Conc: 135.90 ng/ml



#9 AR-1221-2

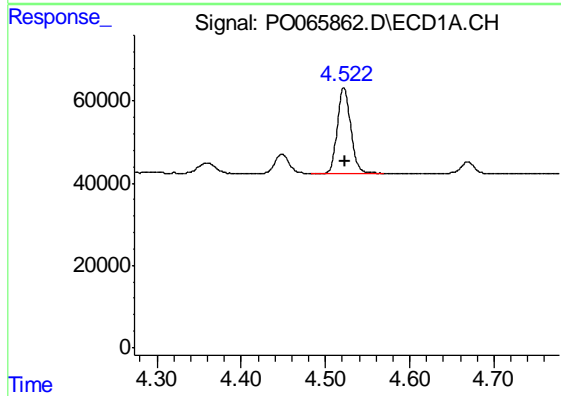
R.T.: 4.448 min
 Delta R.T.: 0.000 min
 Response: 55536
 Conc: 251.77 ng/ml

Instrument :
 ECD_O
 ClientSampleId :
 ICVPO012320



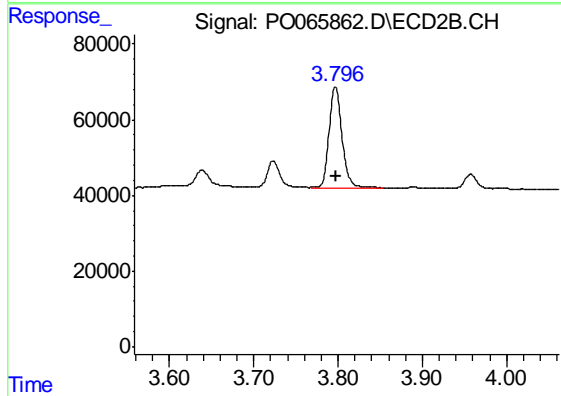
#9 AR-1221-2

R.T.: 3.723 min
 Delta R.T.: 0.000 min
 Response: 69885
 Conc: 275.01 ng/ml



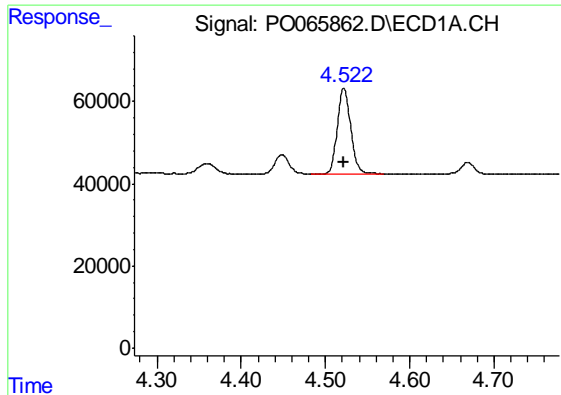
#10 AR-1221-3

R.T.: 4.522 min
 Delta R.T.: 0.000 min
 Response: 229928
 Conc: 320.49 ng/ml



#10 AR-1221-3

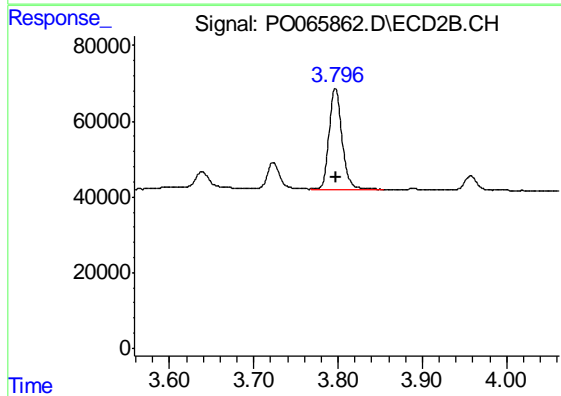
R.T.: 3.797 min
 Delta R.T.: 0.000 min
 Response: 282832
 Conc: 343.68 ng/ml



#11 AR-1232-1

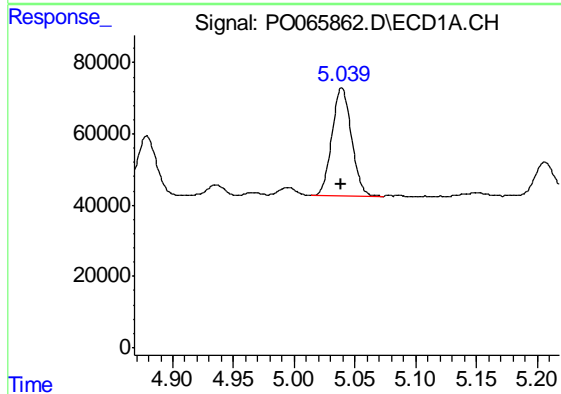
R.T.: 4.522 min
 Delta R.T.: 0.000 min
 Response: 229928
 Conc: 423.38 ng/ml

Instrument :
 ECD_O
 ClientSampleId :
 ICVPO012320



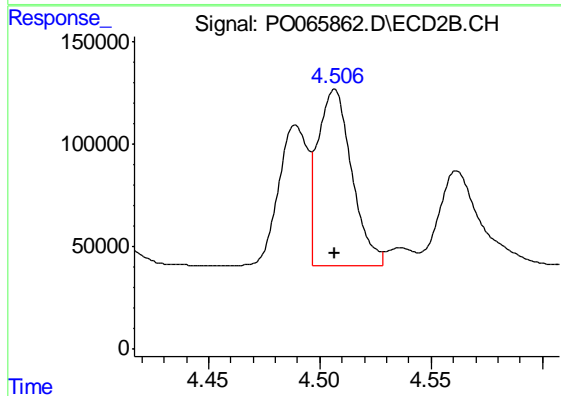
#11 AR-1232-1

R.T.: 3.797 min
 Delta R.T.: 0.000 min
 Response: 282832
 Conc: 444.34 ng/ml



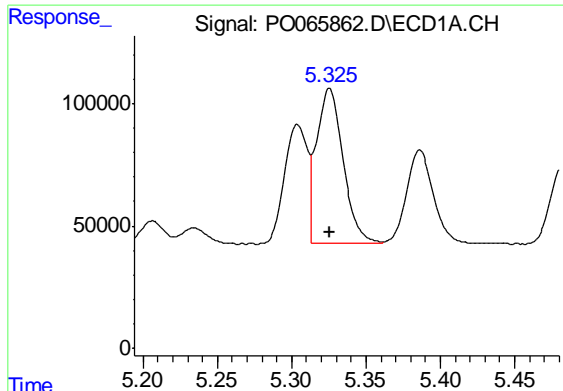
#12 AR-1232-2

R.T.: 5.039 min
 Delta R.T.: 0.000 min
 Response: 340405
 Conc: 1178.61 ng/ml



#12 AR-1232-2

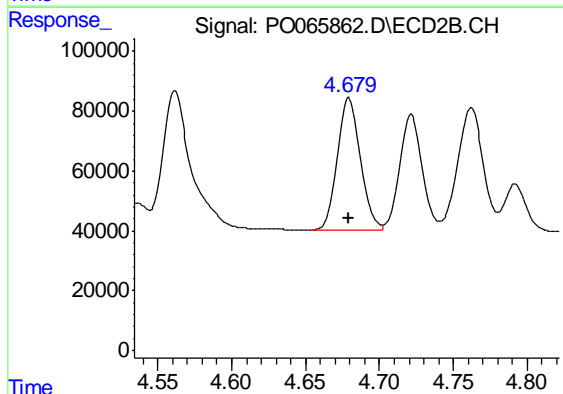
R.T.: 4.507 min
 Delta R.T.: 0.000 min
 Response: 920770
 Conc: 1197.93 ng/ml



#13 AR-1232-3

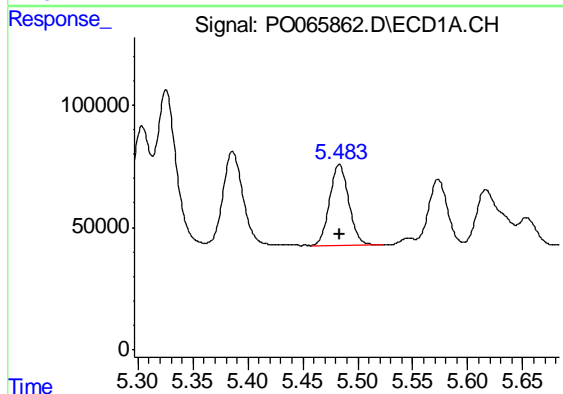
R.T.: 5.325 min
 Delta R.T.: 0.000 min
 Response: 785642
 Conc: 1166.38 ng/ml

Instrument :
 ECD_O
 ClientSampleId :
 ICVPO012320



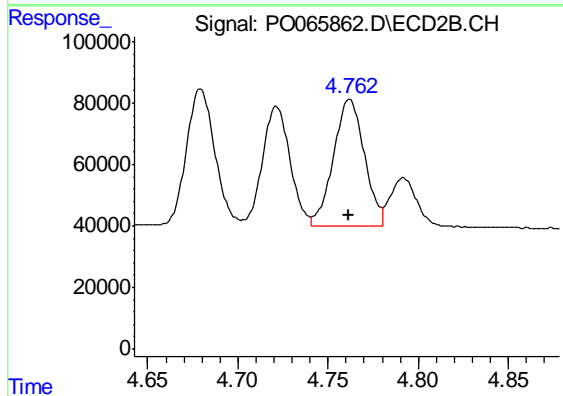
#13 AR-1232-3

R.T.: 4.679 min
 Delta R.T.: 0.000 min
 Response: 483681
 Conc: 1257.06 ng/ml



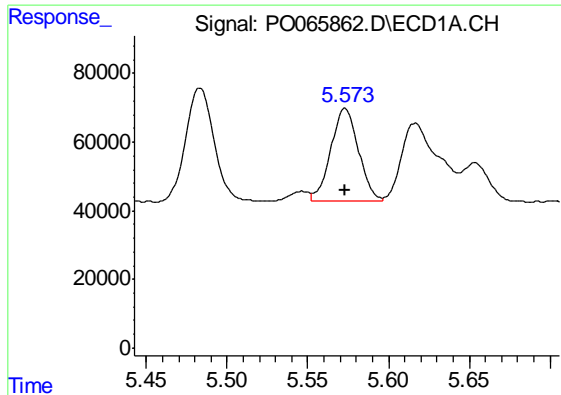
#14 AR-1232-4

R.T.: 5.483 min
 Delta R.T.: 0.000 min
 Response: 401295
 Conc: 1194.17 ng/ml



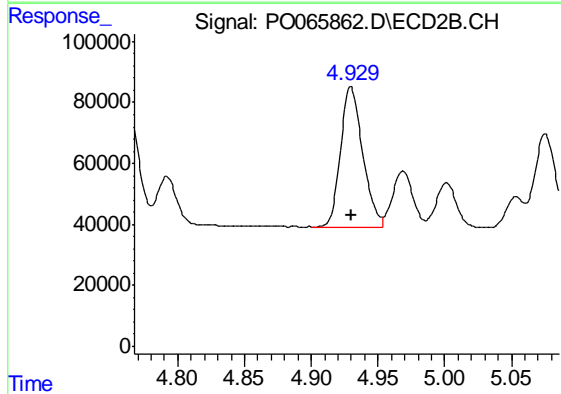
#14 AR-1232-4

R.T.: 4.762 min
 Delta R.T.: 0.000 min
 Response: 494496
 Conc: 1404.28 ng/ml

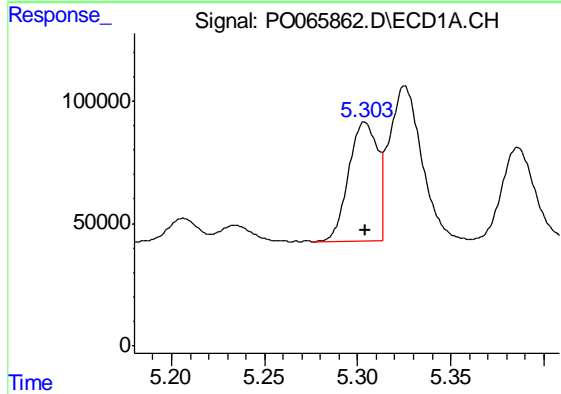


#15 AR-1232-5
 R.T.: 5.573 min
 Delta R.T.: 0.000 min
 Response: 324954
 Conc: 1310.06 ng/ml

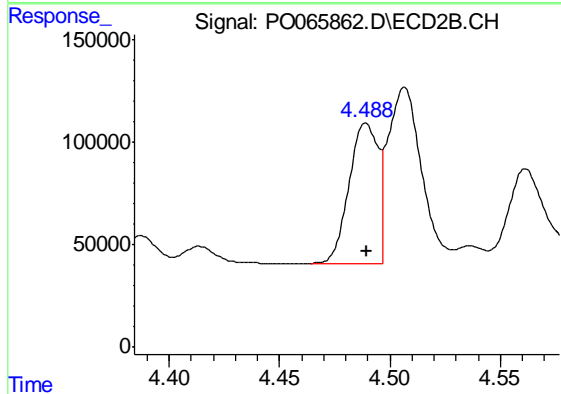
Instrument :
 ECD_O
 ClientSampleId :
 ICVPO012320



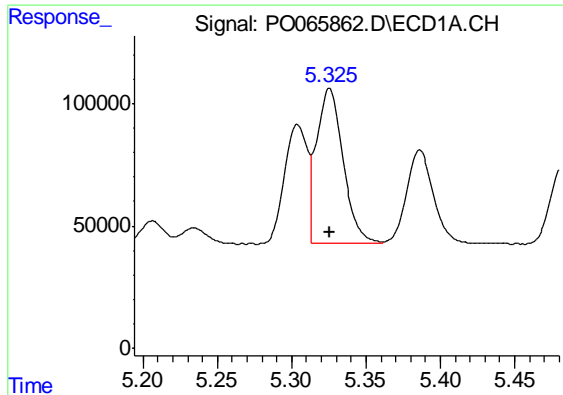
#15 AR-1232-5
 R.T.: 4.930 min
 Delta R.T.: 0.000 min
 Response: 531835
 Conc: 1334.67 ng/ml



#16 AR-1242-1
 R.T.: 5.304 min
 Delta R.T.: 0.000 min
 Response: 524010
 Conc: 650.22 ng/ml



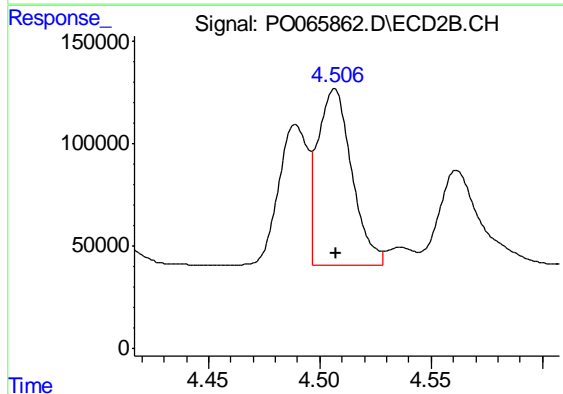
#16 AR-1242-1
 R.T.: 4.489 min
 Delta R.T.: 0.000 min
 Response: 618718
 Conc: 666.58 ng/ml



#17 AR-1242-2

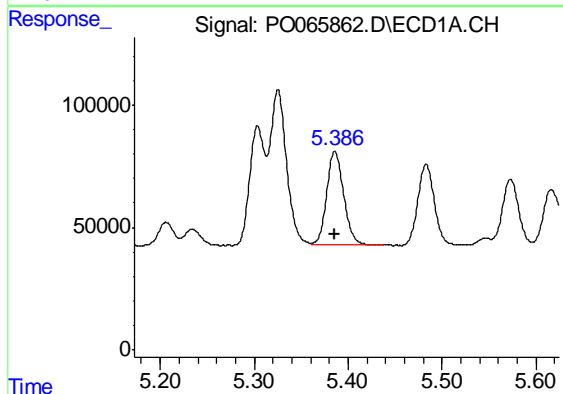
R.T.: 5.325 min
 Delta R.T.: 0.000 min
 Response: 785642
 Conc: 657.14 ng/ml

Instrument :
 ECD_O
 ClientSampleId :
 ICVPO012320



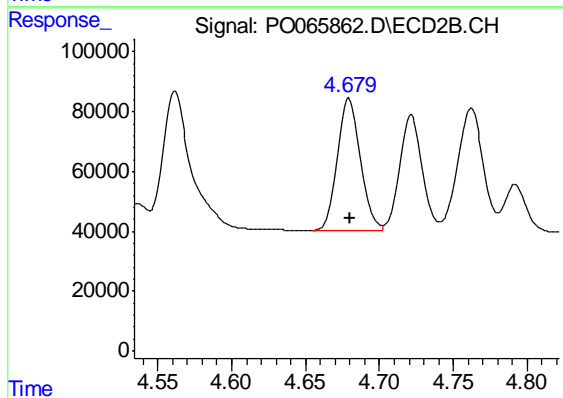
#17 AR-1242-2

R.T.: 4.507 min
 Delta R.T.: 0.000 min
 Response: 920770
 Conc: 665.74 ng/ml



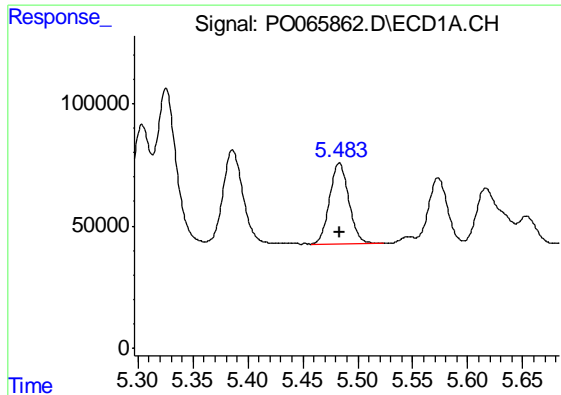
#18 AR-1242-3

R.T.: 5.386 min
 Delta R.T.: 0.000 min
 Response: 484386
 Conc: 645.95 ng/ml



#18 AR-1242-3

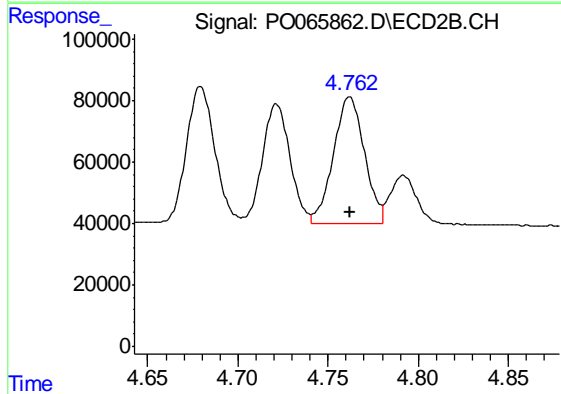
R.T.: 4.679 min
 Delta R.T.: 0.000 min
 Response: 483681
 Conc: 657.21 ng/ml



#19 AR-1242-4

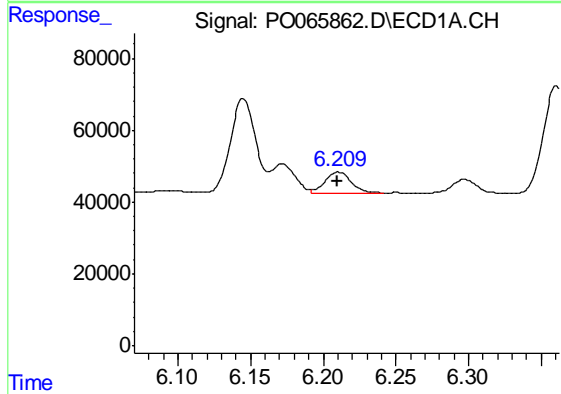
R.T.: 5.483 min
 Delta R.T.: -0.001 min
 Response: 401295
 Conc: 656.00 ng/ml

Instrument :
 ECD_O
 ClientSampleId :
 ICVPO012320



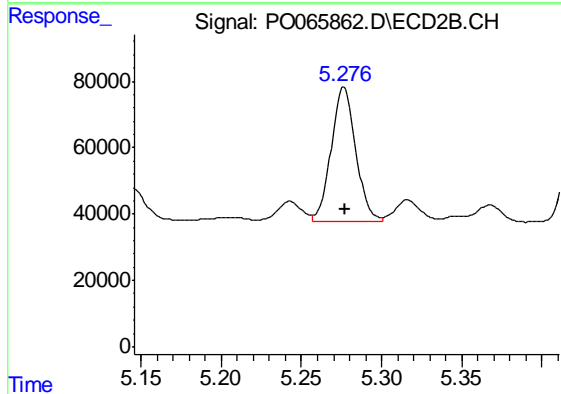
#19 AR-1242-4

R.T.: 4.762 min
 Delta R.T.: 0.000 min
 Response: 494496
 Conc: 664.18 ng/ml



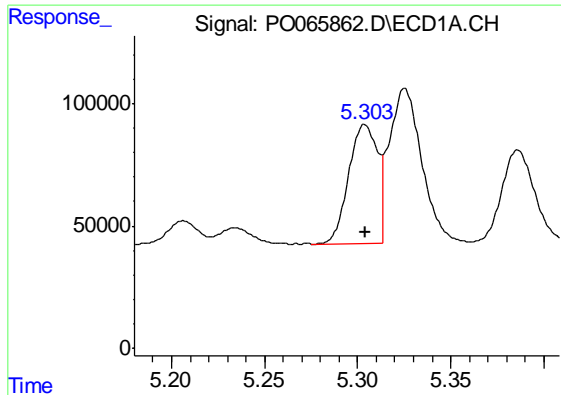
#20 AR-1242-5

R.T.: 6.210 min
 Delta R.T.: 0.000 min
 Response: 71748
 Conc: 86.17 ng/ml



#20 AR-1242-5

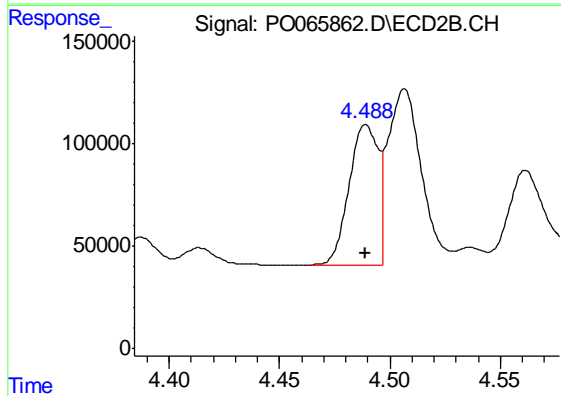
R.T.: 5.276 min
 Delta R.T.: 0.000 min
 Response: 431136
 Conc: 389.46 ng/ml



#21 AR-1248-1

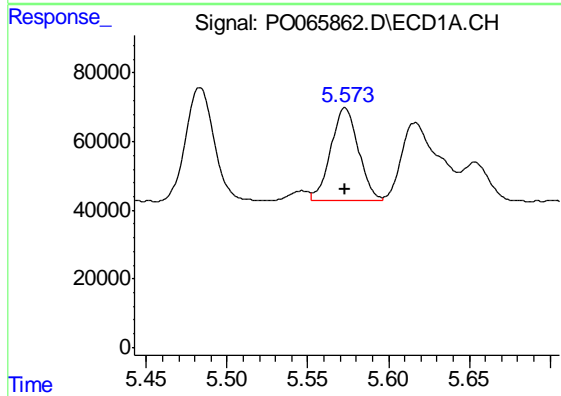
R.T.: 5.304 min
 Delta R.T.: 0.000 min
 Response: 524010
 Conc: 848.54 ng/ml

Instrument :
 ECD_O
 ClientSampleId :
 ICVPO012320



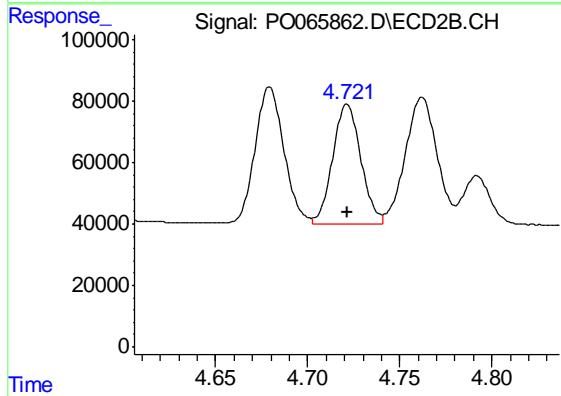
#21 AR-1248-1

R.T.: 4.489 min
 Delta R.T.: 0.000 min
 Response: 618718
 Conc: 867.24 ng/ml



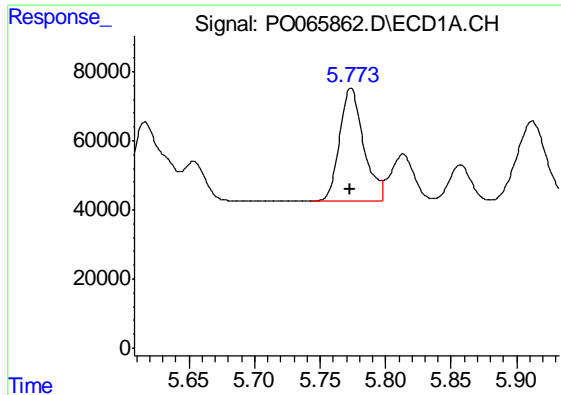
#22 AR-1248-2

R.T.: 5.573 min
 Delta R.T.: 0.000 min
 Response: 324954
 Conc: 369.07 ng/ml



#22 AR-1248-2

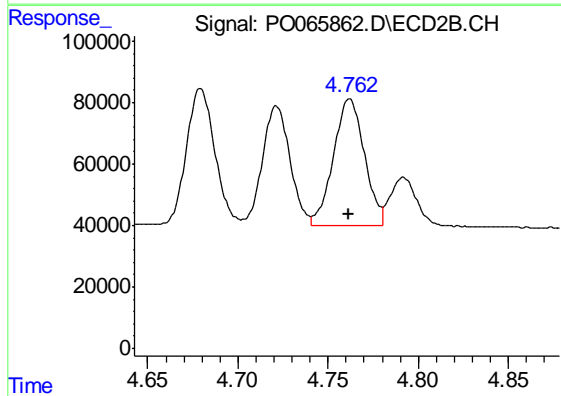
R.T.: 4.721 min
 Delta R.T.: 0.000 min
 Response: 413632
 Conc: 408.08 ng/ml



#23 AR-1248-3

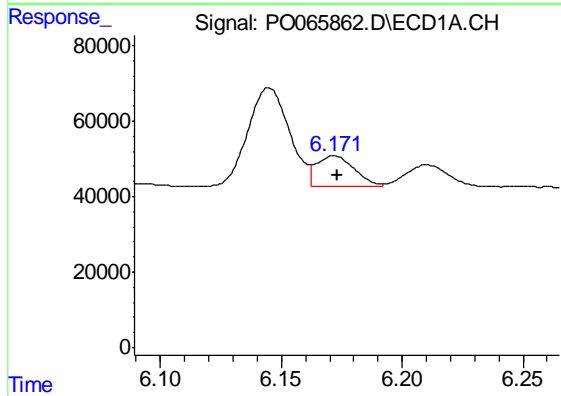
R.T.: 5.774 min
 Delta R.T.: 0.000 min
 Response: 415045
 Conc: 402.24 ng/ml

Instrument :
 ECD_O
 ClientSampleId :
 ICVPO012320



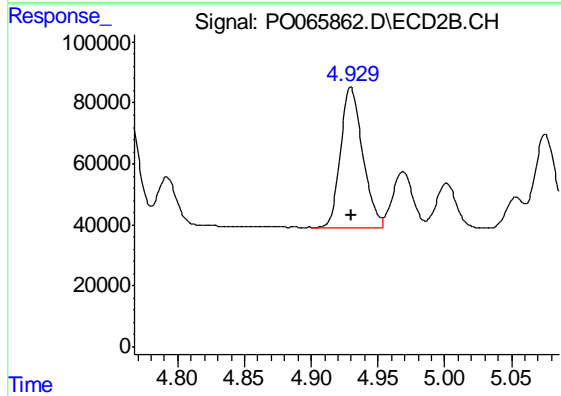
#23 AR-1248-3

R.T.: 4.762 min
 Delta R.T.: 0.000 min
 Response: 494496
 Conc: 481.09 ng/ml



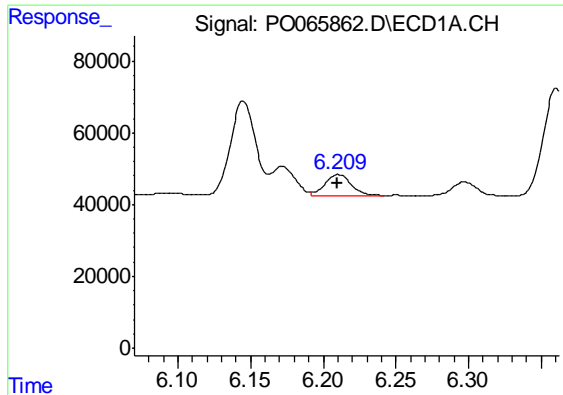
#24 AR-1248-4

R.T.: 6.172 min
 Delta R.T.: -0.001 min
 Response: 89934
 Conc: 66.75 ng/ml



#24 AR-1248-4

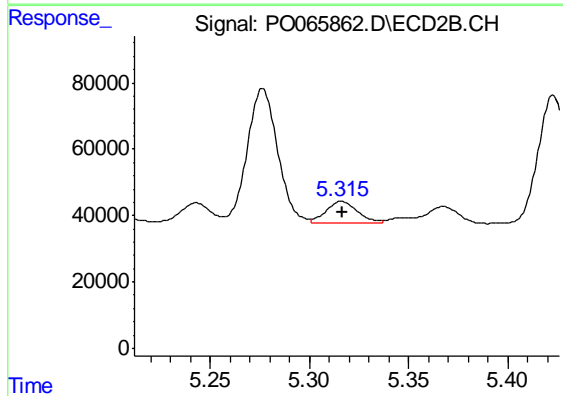
R.T.: 4.930 min
 Delta R.T.: 0.000 min
 Response: 531835
 Conc: 416.77 ng/ml



#25 AR-1248-5

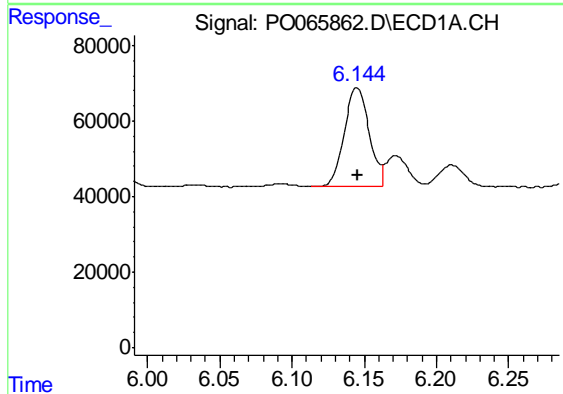
R.T.: 6.210 min
 Delta R.T.: 0.000 min
 Response: 71748
 Conc: 55.51 ng/ml

Instrument :
 ECD_O
 ClientSampleId :
 ICVPO012320



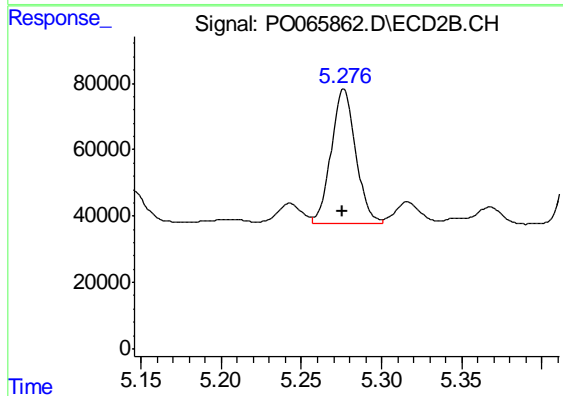
#25 AR-1248-5

R.T.: 5.316 min
 Delta R.T.: 0.000 min
 Response: 71752
 Conc: 51.41 ng/ml



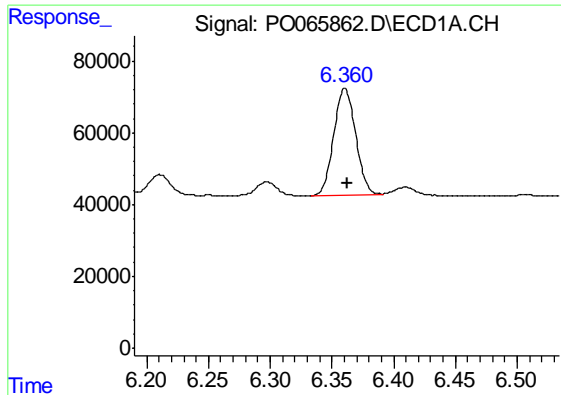
#26 AR-1254-1

R.T.: 6.145 min
 Delta R.T.: 0.000 min
 Response: 313782
 Conc: 236.40 ng/ml



#26 AR-1254-1

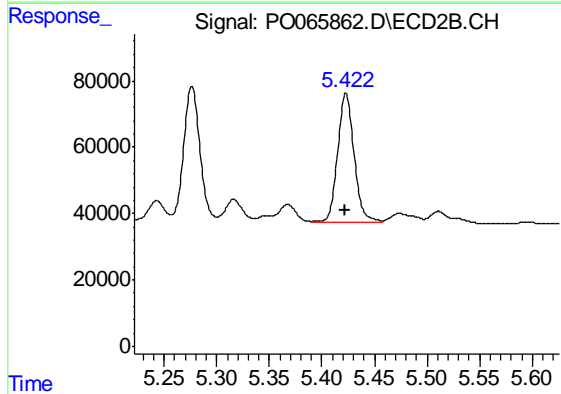
R.T.: 5.276 min
 Delta R.T.: 0.000 min
 Response: 431136
 Conc: 192.81 ng/ml



#27 AR-1254-2

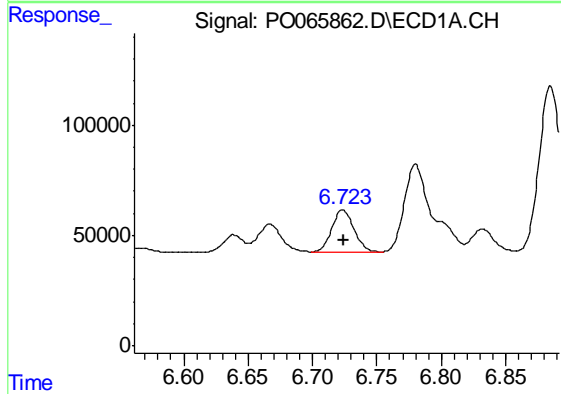
R.T.: 6.361 min
 Delta R.T.: -0.002 min
 Response: 367680
 Conc: 168.78 ng/ml

Instrument :
 ECD_O
 ClientSampleId :
 ICVPO012320



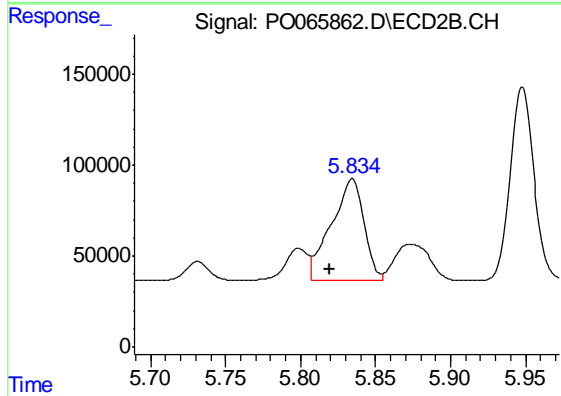
#27 AR-1254-2

R.T.: 5.423 min
 Delta R.T.: 0.000 min
 Response: 423482
 Conc: 206.18 ng/ml



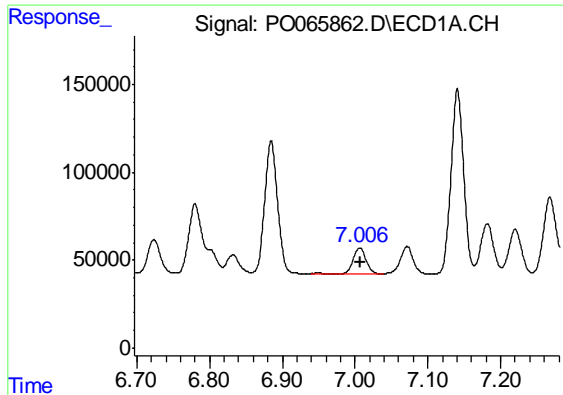
#28 AR-1254-3

R.T.: 6.724 min
 Delta R.T.: 0.000 min
 Response: 230429
 Conc: 94.76 ng/ml



#28 AR-1254-3

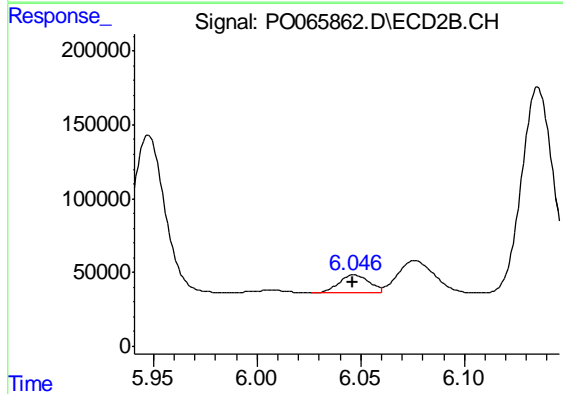
R.T.: 5.834 min
 Delta R.T.: 0.015 min
 Response: 844059
 Conc: 248.91 ng/ml



#29 AR-1254-4

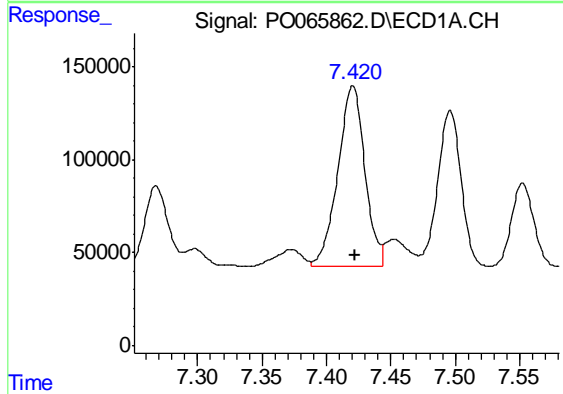
R.T.: 7.007 min
 Delta R.T.: -0.001 min
 Response: 175463
 Conc: 83.72 ng/ml

Instrument :
 ECD_O
 ClientSampleId :
 ICVPO012320



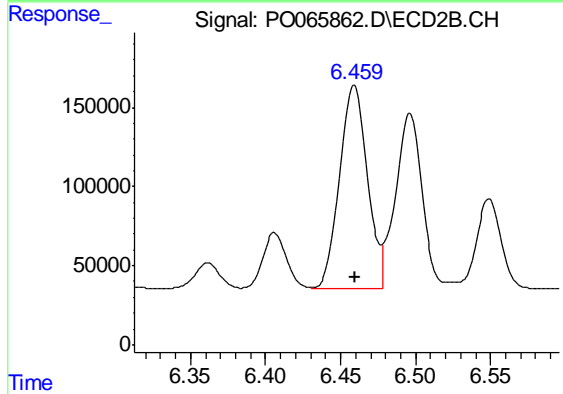
#29 AR-1254-4

R.T.: 6.047 min
 Delta R.T.: 0.000 min
 Response: 126448
 Conc: 55.20 ng/ml



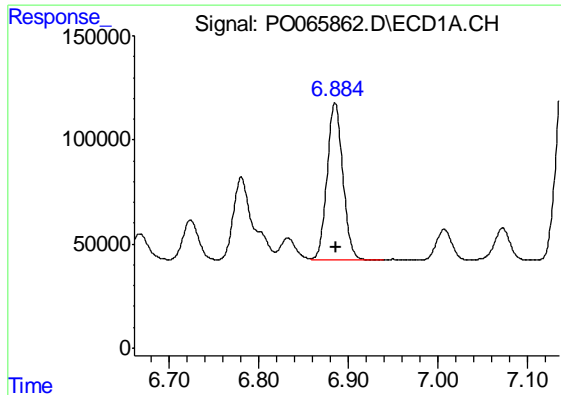
#30 AR-1254-5

R.T.: 7.420 min
 Delta R.T.: -0.002 min
 Response: 1420012
 Conc: 661.82 ng/ml



#30 AR-1254-5

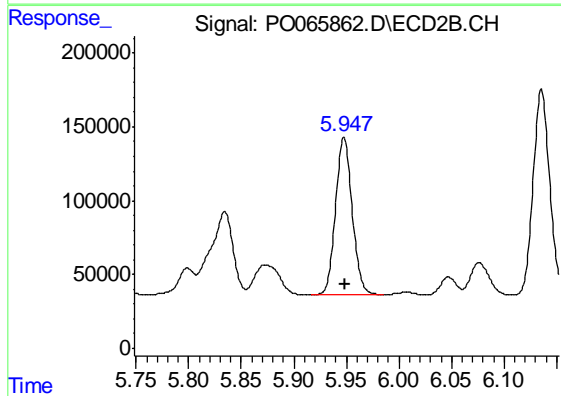
R.T.: 6.459 min
 Delta R.T.: 0.000 min
 Response: 1644272
 Conc: 508.46 ng/ml



#31 AR-1260-1

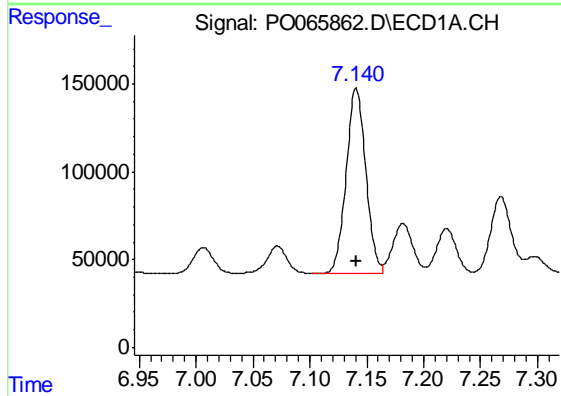
R.T.: 6.885 min
Delta R.T.: 0.000 min
Response: 923018
Conc: 476.39 ng/ml

Instrument :
ECD_O
ClientSampleId :
ICVPO012320



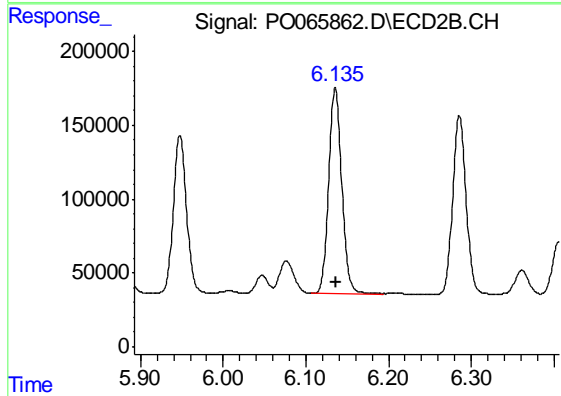
#31 AR-1260-1

R.T.: 5.948 min
Delta R.T.: 0.000 min
Response: 1180612
Conc: 487.40 ng/ml



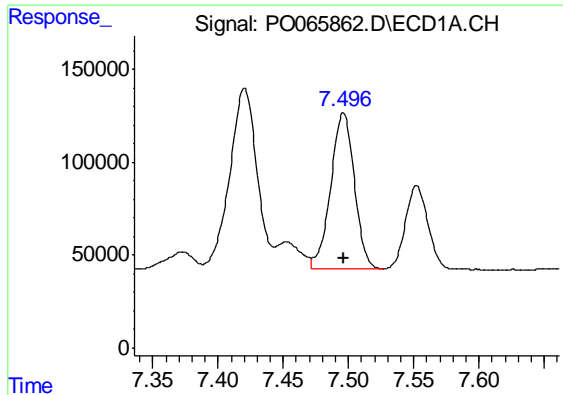
#32 AR-1260-2

R.T.: 7.141 min
Delta R.T.: 0.000 min
Response: 1261041
Conc: 480.89 ng/ml



#32 AR-1260-2

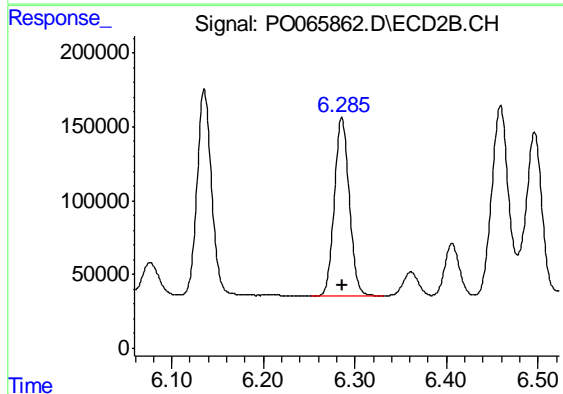
R.T.: 6.136 min
Delta R.T.: 0.000 min
Response: 1536169
Conc: 484.80 ng/ml



#33 AR-1260-3

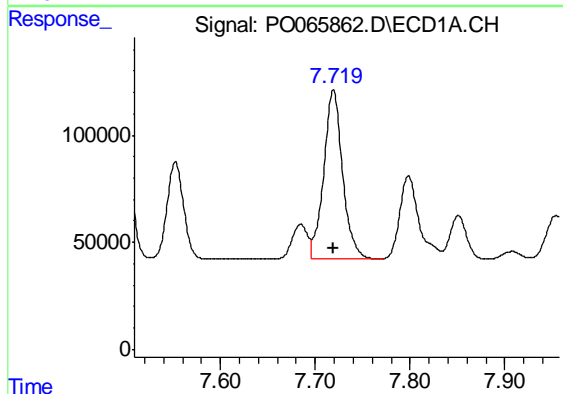
R.T.: 7.496 min
 Delta R.T.: 0.000 min
 Response: 1070509
 Conc: 492.59 ng/ml

Instrument :
 ECD_O
 ClientSampleId :
 ICVPO012320



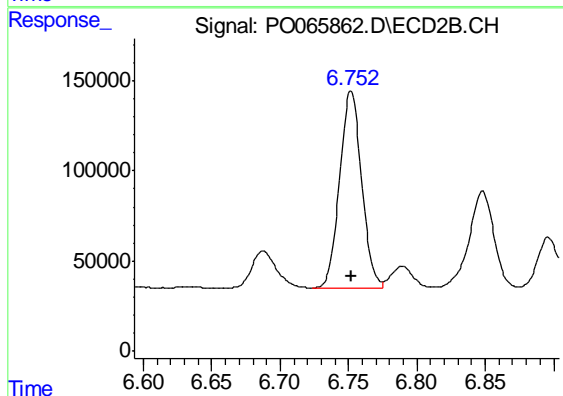
#33 AR-1260-3

R.T.: 6.286 min
 Delta R.T.: 0.000 min
 Response: 1363964
 Conc: 493.26 ng/ml



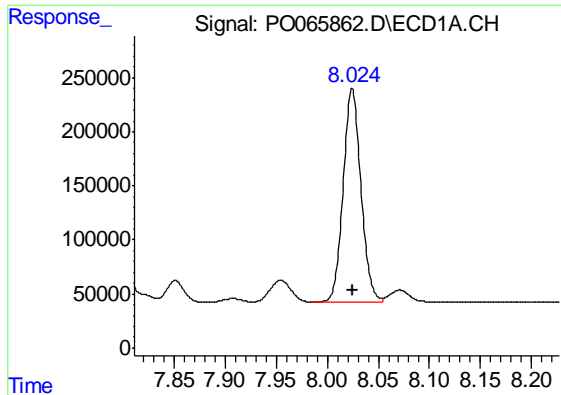
#34 AR-1260-4

R.T.: 7.719 min
 Delta R.T.: 0.000 min
 Response: 1094988
 Conc: 493.98 ng/ml



#34 AR-1260-4

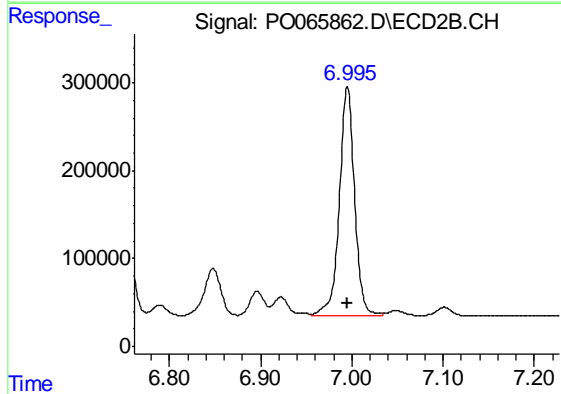
R.T.: 6.752 min
 Delta R.T.: 0.000 min
 Response: 1226753
 Conc: 497.07 ng/ml



#35 AR-1260-5

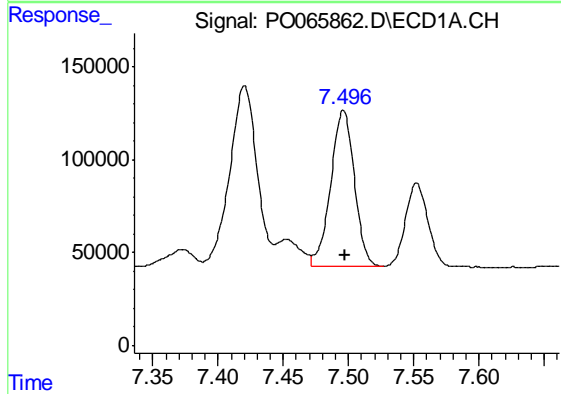
R.T.: 8.024 min
 Delta R.T.: 0.000 min
 Response: 2381892
 Conc: 491.92 ng/ml

Instrument :
 ECD_O
 ClientSampled :
 ICVPO012320



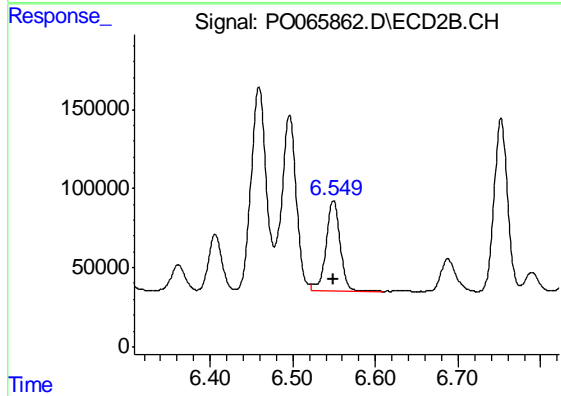
#35 AR-1260-5

R.T.: 6.995 min
 Delta R.T.: 0.000 min
 Response: 3039568
 Conc: 500.01 ng/ml



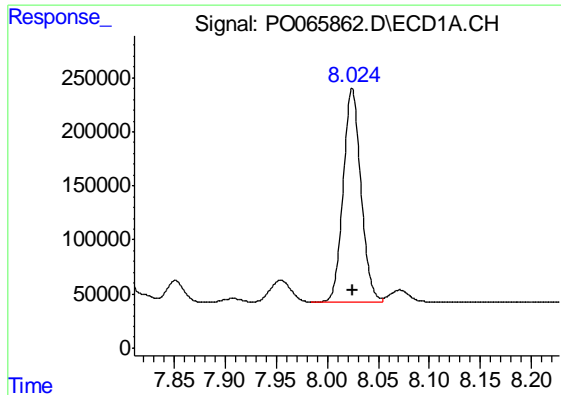
#36 AR-1262-1

R.T.: 7.496 min
 Delta R.T.: 0.000 min
 Response: 1070509
 Conc: 360.23 ng/ml



#36 AR-1262-1

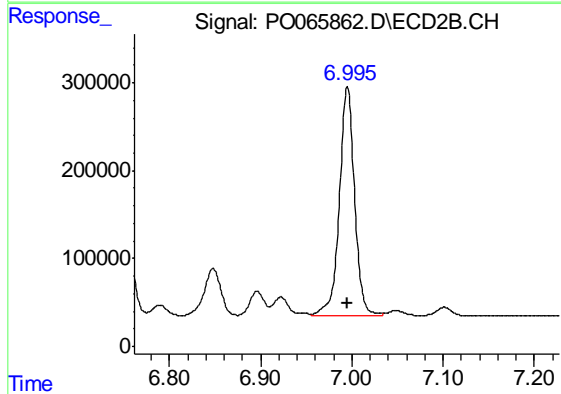
R.T.: 6.549 min
 Delta R.T.: 0.000 min
 Response: 676451
 Conc: 488.83 ng/ml



#37 AR-1262-2

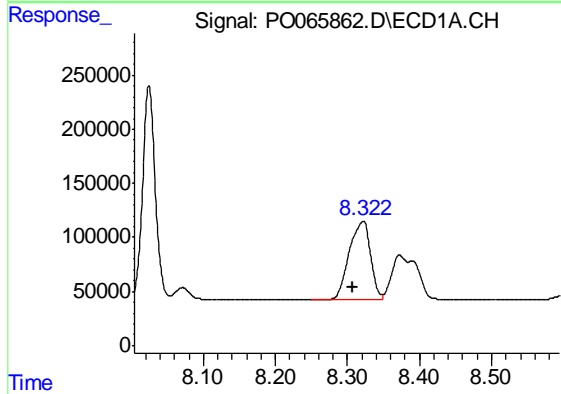
R.T.: 8.024 min
 Delta R.T.: 0.000 min
 Response: 2381892
 Conc: 462.60 ng/ml

Instrument :
 ECD_O
 ClientSampleId :
 ICVPO012320



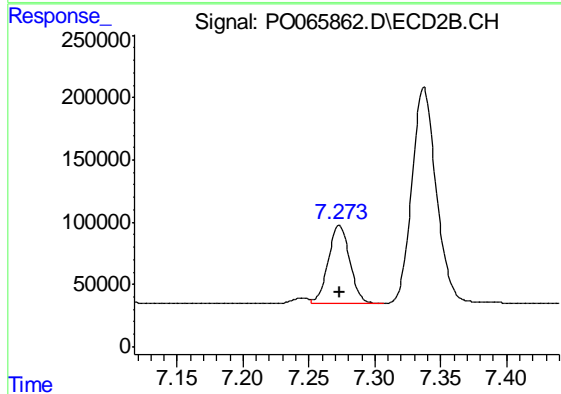
#37 AR-1262-2

R.T.: 6.995 min
 Delta R.T.: 0.000 min
 Response: 3039568
 Conc: 480.74 ng/ml



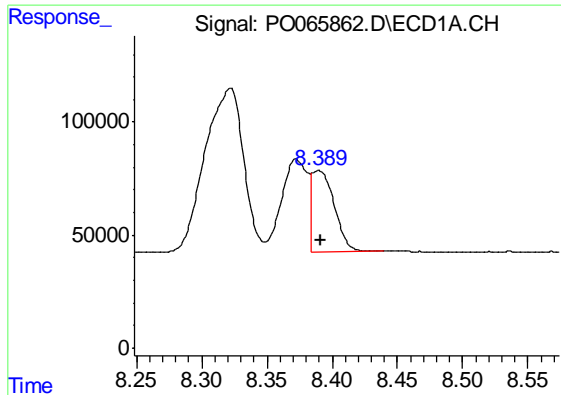
#38 AR-1262-3

R.T.: 8.322 min
 Delta R.T.: 0.015 min
 Response: 1486410
 Conc: 423.40 ng/ml



#38 AR-1262-3

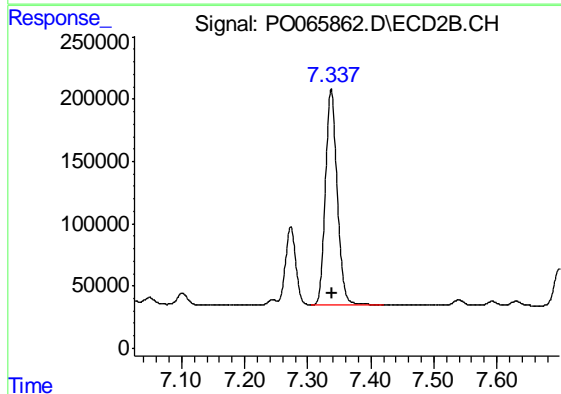
R.T.: 7.273 min
 Delta R.T.: 0.000 min
 Response: 714637
 Conc: 279.05 ng/ml



#39 AR-1262-4

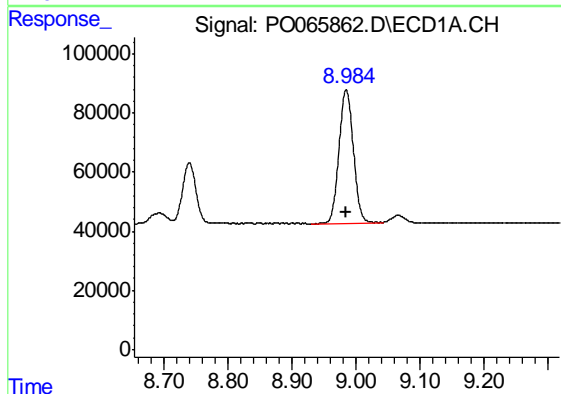
R.T.: 8.390 min
 Delta R.T.: -0.002 min
 Response: 426894
 Conc: 156.15 ng/ml

Instrument :
 ECD_O
 ClientSampleId :
 ICVPO012320



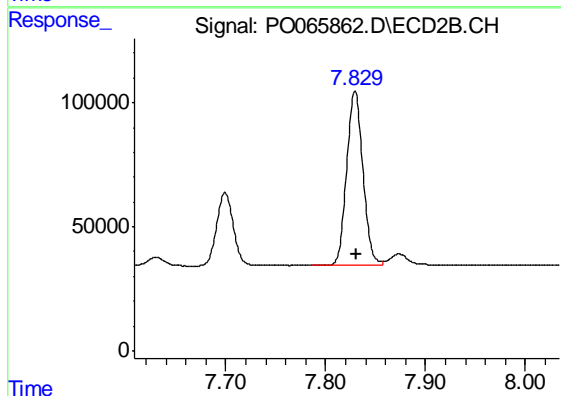
#39 AR-1262-4

R.T.: 7.337 min
 Delta R.T.: -0.001 min
 Response: 2234499
 Conc: 475.16 ng/ml



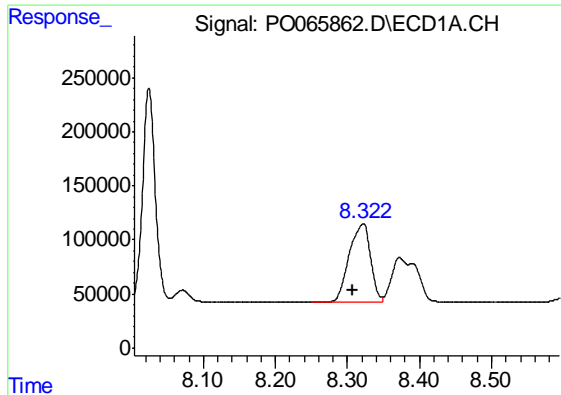
#40 AR-1262-5

R.T.: 8.984 min
 Delta R.T.: 0.000 min
 Response: 711558
 Conc: 377.32 ng/ml



#40 AR-1262-5

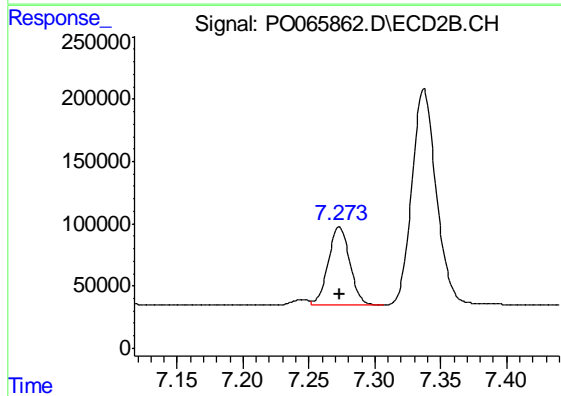
R.T.: 7.829 min
 Delta R.T.: 0.000 min
 Response: 796845
 Conc: 378.96 ng/ml



#41 AR-1268-1

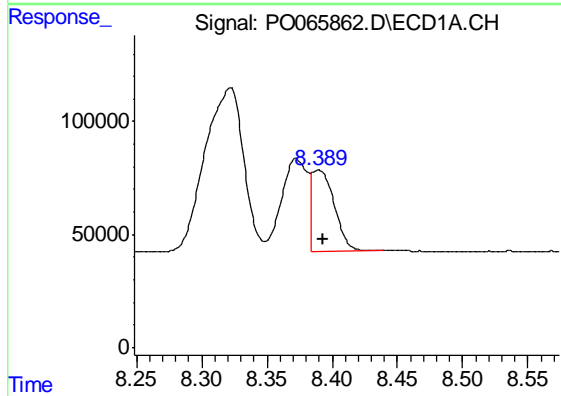
R.T.: 8.322 min
 Delta R.T.: 0.015 min
 Response: 1486410
 Conc: 226.75 ng/ml

Instrument :
 ECD_O
 ClientSampleId :
 ICVPO012320



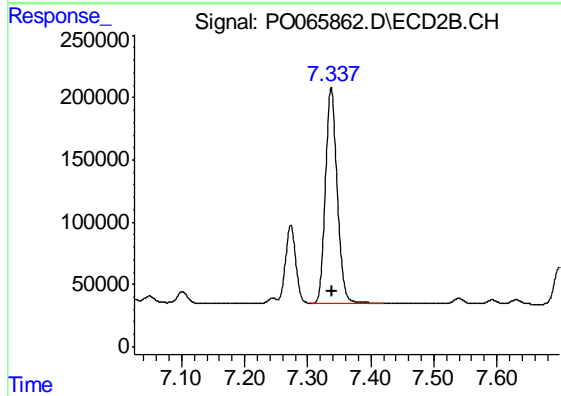
#41 AR-1268-1

R.T.: 7.273 min
 Delta R.T.: 0.000 min
 Response: 714637
 Conc: 91.73 ng/ml



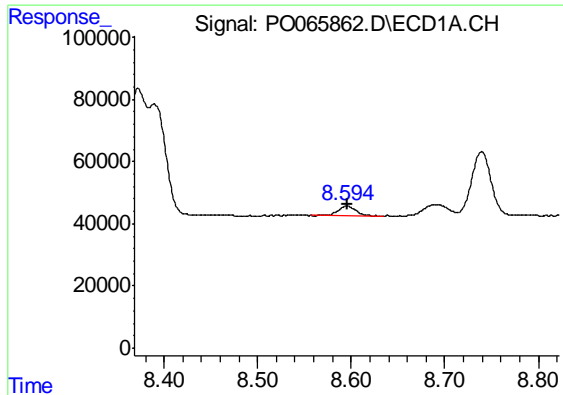
#42 AR-1268-2

R.T.: 8.390 min
 Delta R.T.: -0.004 min
 Response: 426894
 Conc: 72.36 ng/ml



#42 AR-1268-2

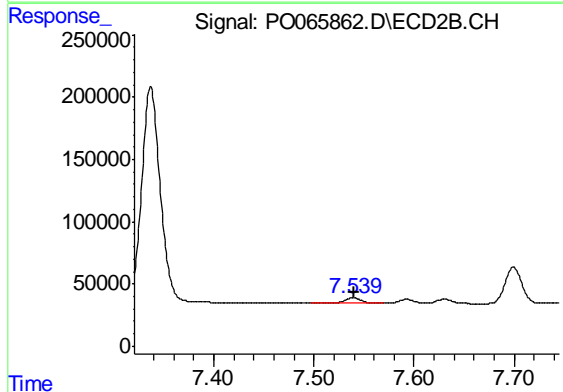
R.T.: 7.337 min
 Delta R.T.: -0.001 min
 Response: 2234499
 Conc: 308.52 ng/ml



#43 AR-1268-3

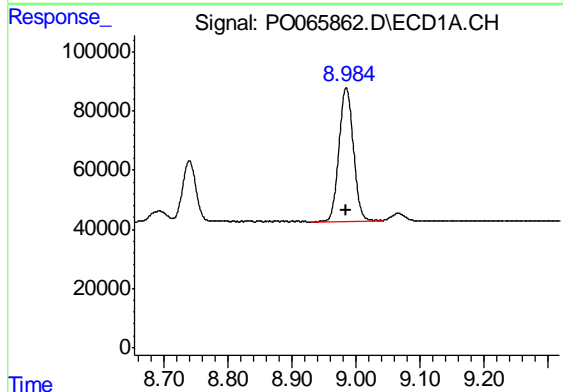
R.T.: 8.595 min
 Delta R.T.: -0.002 min
 Response: 41433
 Conc: 8.22 ng/ml

Instrument :
 ECD_O
 ClientSampleId :
 ICVPO012320



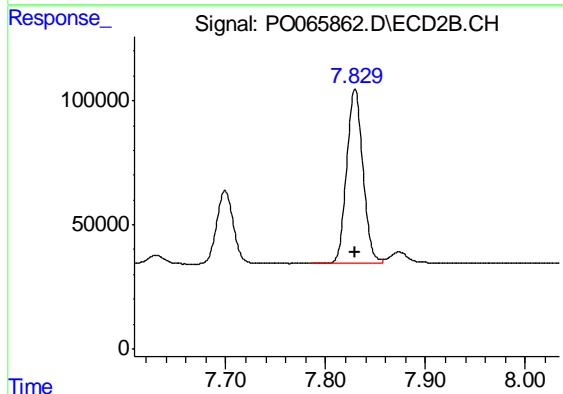
#43 AR-1268-3

R.T.: 7.539 min
 Delta R.T.: 0.000 min
 Response: 49597
 Conc: 8.29 ng/ml



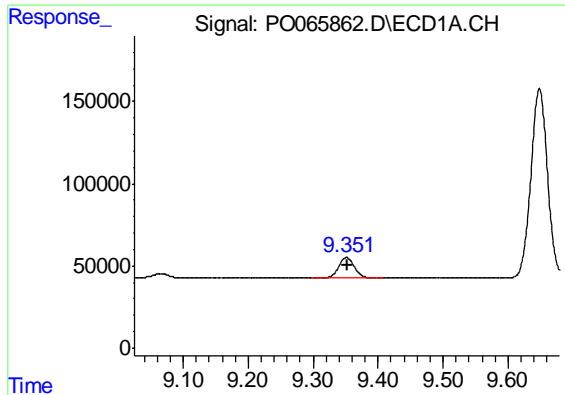
#44 AR-1268-4

R.T.: 8.984 min
 Delta R.T.: 0.000 min
 Response: 711558
 Conc: 335.82 ng/ml



#44 AR-1268-4

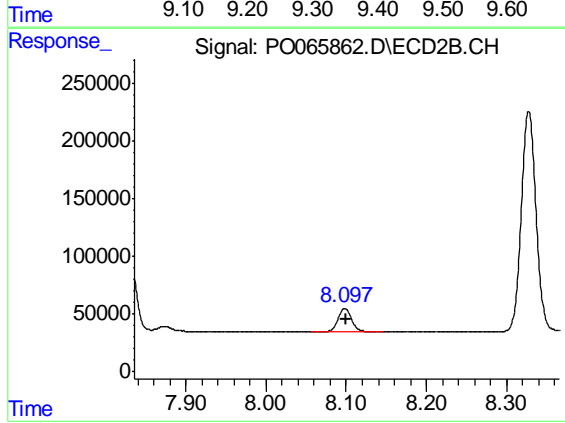
R.T.: 7.829 min
 Delta R.T.: 0.000 min
 Response: 796845
 Conc: 326.65 ng/ml



#45 AR-1268-5

R.T.: 9.351 min
Delta R.T.: -0.001 min
Response: 203074
Conc: 13.55 ng/ml

Instrument :
ECD_O
ClientSampleId :
ICVPO012320



#45 AR-1268-5

R.T.: 8.098 min
Delta R.T.: -0.002 min
Response: 230582
Conc: 12.76 ng/ml