

Data Path : Z:\pestpcbsrv\HPCHEM1\ECD\_0\Data\P0012320\  
 Data File : P0065853.D  
 Signal(s) : Signal #1: ECD1A.CH Signal #2: ECD2B.CH  
 Acq On : 23 Jan 2020 19:02  
 Operator : DD\AJ  
 Sample : AR1660ICC250  
 Misc :  
 ALS Vial : 6 Sample Multiplier: 1

Instrument :  
 ECD\_0  
 ClientSampleId :  
 AR1660ICC250

Integration File signal 1: autoint1.e  
 Integration File signal 2: autoint2.e  
 Quant Time: Jan 24 02:35:48 2020  
 Quant Method : Z:\pestpcbsrv\HPCHEM1\ECD\_0\methods\P0012320.M  
 Quant Title : GC EXTRACTABLES  
 QLast Update : Fri Jan 24 02:29:22 2020  
 Response via : Initial Calibration  
 Integrator: ChemStation 6890 Scale Mode: Small noise peaks clipped

Volume Inj. : 2 µl  
 Signal #1 Phase : ZB-MR2 Signal #2 Phase: ZB-MR2  
 Signal #1 Info : 30Mx0.32mmx 0.50µ Signal #2 Info : 30M x 0.32mm x 0.25µm

Compound	RT#1	RT#2	Resp#1	Resp#2	ng/ml	ng/ml
-----						
System Monitoring Compounds						
1) SA Tetrachlo...	4.155	3.431	576687	675280	24.207	25.033
2) SA Decachlor...	9.650	8.328	1039573	1217644	25.232	25.464
Target Compounds						
3) L1 AR-1016-1	5.305	4.489	283367	328548	261.060	270.267
4) L1 AR-1016-2	5.326	4.507	420915	486417	256.785	267.435
5) L1 AR-1016-3	5.386	4.680	260938	254009	260.106	265.937
6) L1 AR-1016-4	5.484	4.722	214598	216873	256.338	268.765
7) L1 AR-1016-5	5.774	4.931	220751	282695	257.626	268.386
31) L7 AR-1260-1	6.886	5.948	496453	627153	267.510	271.673
32) L7 AR-1260-2	7.141	6.136	665377	808923	264.271	271.145
33) L7 AR-1260-3	7.496	6.286	562179	706764	266.118	266.603
34) L7 AR-1260-4	7.720	6.752	568735	633751	264.785	265.481
35) L7 AR-1260-5	8.025	6.995	1206496	1527237	255.612	258.465

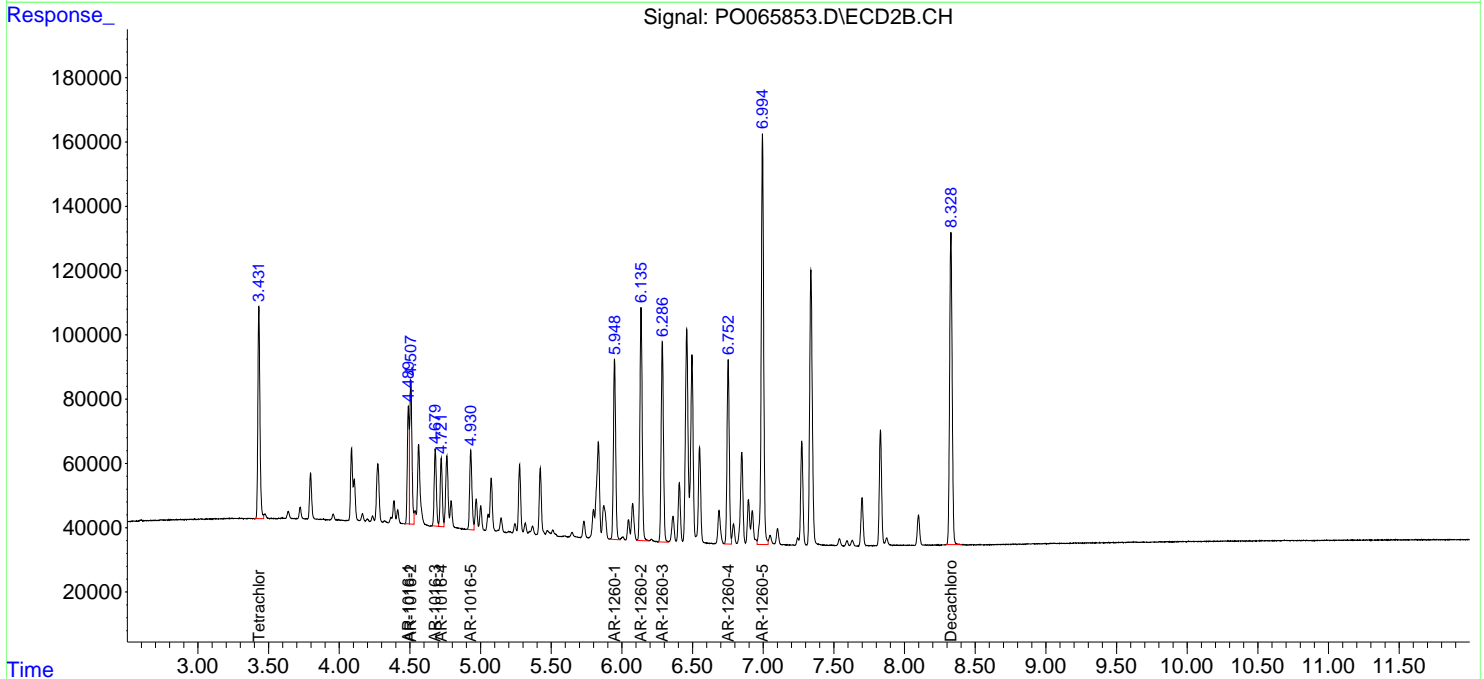
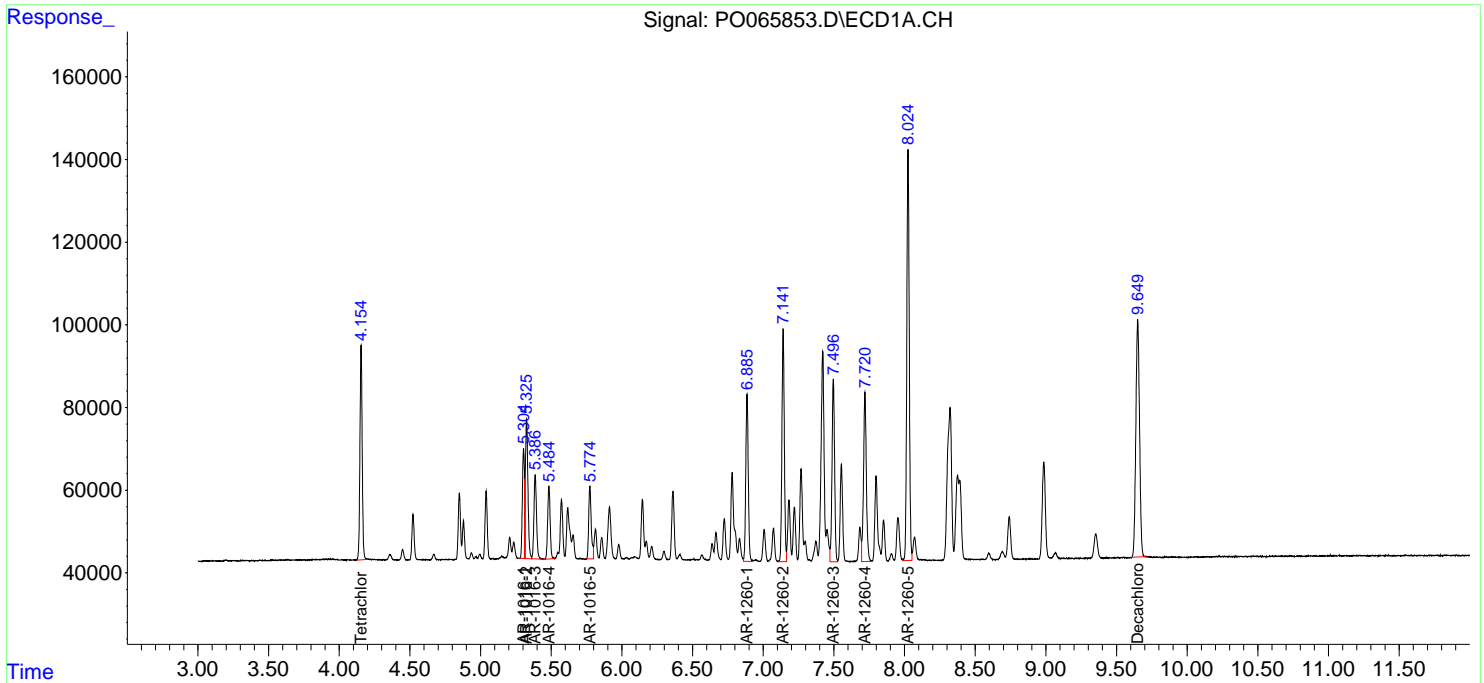
(f)=RT Delta > 1/2 Window (#)=Amounts differ by > 25% (m)=manual int.

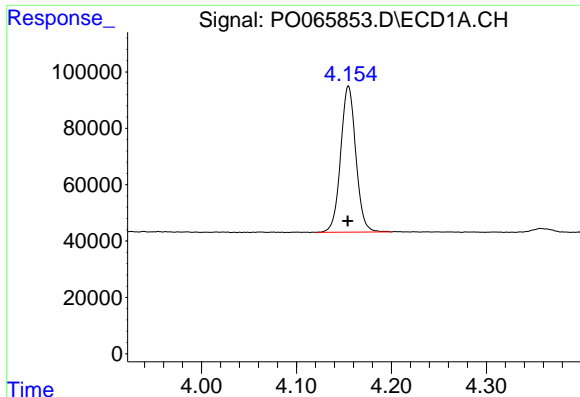
Data Path : Z:\pestpcbsrv\HPCHEM1\ECD\_0\Data\P0012320\  
 Data File : P0065853.D  
 Signal(s) : Signal #1: ECD1A.CH Signal #2: ECD2B.CH  
 Acq On : 23 Jan 2020 19:02  
 Operator : DD\AJ  
 Sample : AR1660ICC250  
 Misc :  
 ALS Vial : 6 Sample Multiplier: 1

Instrument :  
 ECD\_O  
 ClientSampled :  
 AR1660ICC250

Integration File signal 1: autoint1.e  
 Integration File signal 2: autoint2.e  
 Quant Time: Jan 24 02:35:48 2020  
 Quant Method : Z:\pestpcbsrv\HPCHEM1\ECD\_0\methods\P0012320.M  
 Quant Title : GC EXTRACTABLES  
 QLast Update : Fri Jan 24 02:29:22 2020  
 Response via : Initial Calibration  
 Integrator: ChemStation 6890 Scale Mode: Small noise peaks clipped

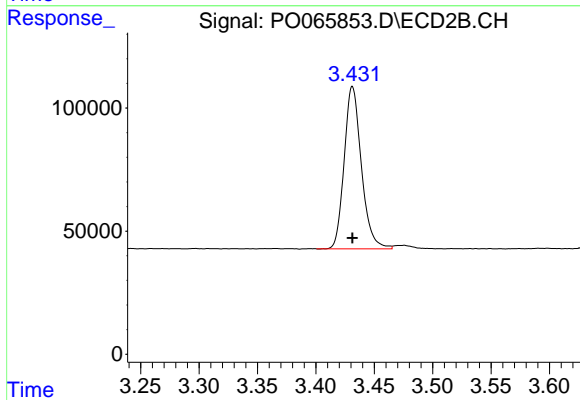
Volume Inj. : 2 µl  
 Signal #1 Phase : ZB-MR1 Signal #2 Phase: ZB-MR2  
 Signal #1 Info : 30Mx0.32mmx 0.50µ Signal #2 Info : 30M x 0.32mm x 0.25µm



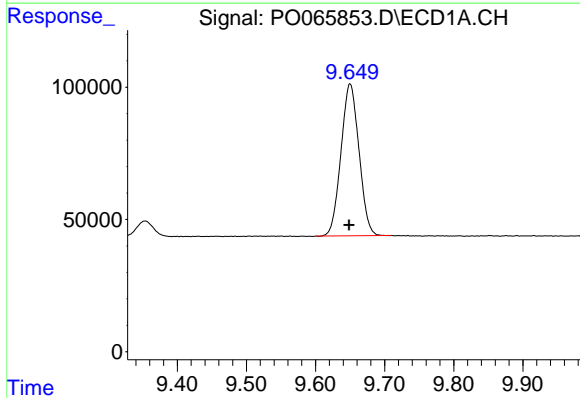


#1 Tetrachloro-m-xylene  
 R.T.: 4.155 min  
 Delta R.T.: 0.000 min  
 Response: 576687  
 Conc: 24.21 ng/ml

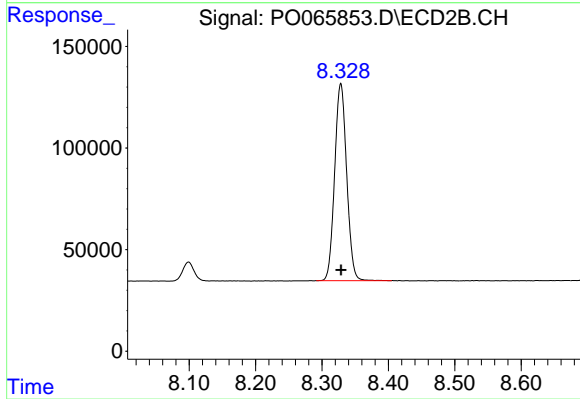
Instrument :  
 ECD\_O  
 ClientSampled :  
 AR1660ICC250



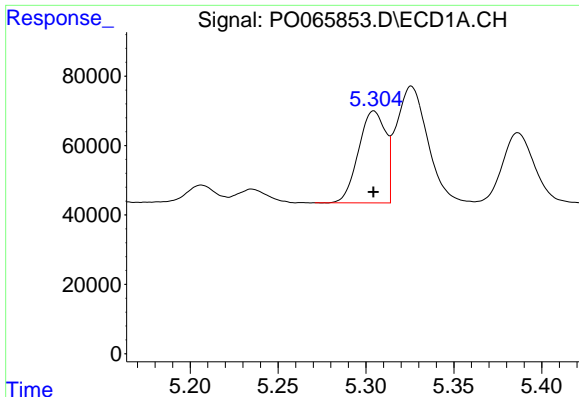
#1 Tetrachloro-m-xylene  
 R.T.: 3.431 min  
 Delta R.T.: 0.000 min  
 Response: 675280  
 Conc: 25.03 ng/ml



#2 Decachlorobiphenyl  
 R.T.: 9.650 min  
 Delta R.T.: 0.001 min  
 Response: 1039573  
 Conc: 25.23 ng/ml



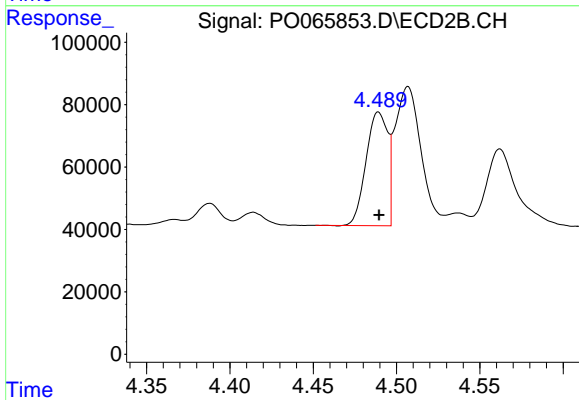
#2 Decachlorobiphenyl  
 R.T.: 8.328 min  
 Delta R.T.: 0.000 min  
 Response: 1217644  
 Conc: 25.46 ng/ml



#3 AR-1016-1

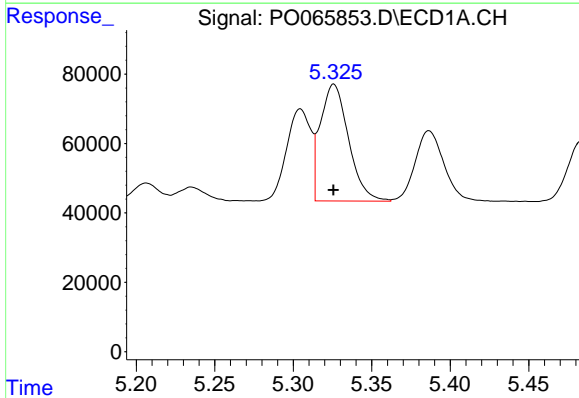
R.T.: 5.305 min  
 Delta R.T.: 0.000 min  
 Response: 283367  
 Conc: 261.06 ng/ml

Instrument :  
 ECD\_O  
 ClientSampleId :  
 AR1660ICC250



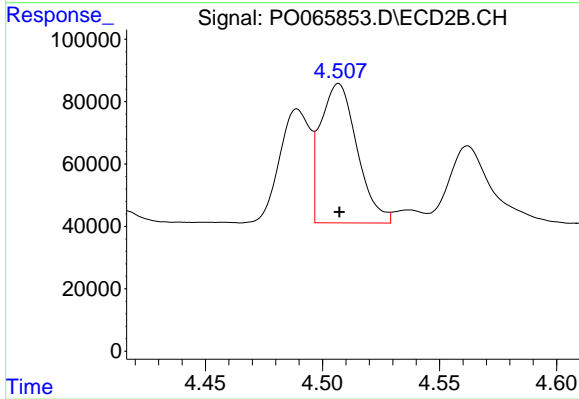
#3 AR-1016-1

R.T.: 4.489 min  
 Delta R.T.: 0.000 min  
 Response: 328548  
 Conc: 270.27 ng/ml



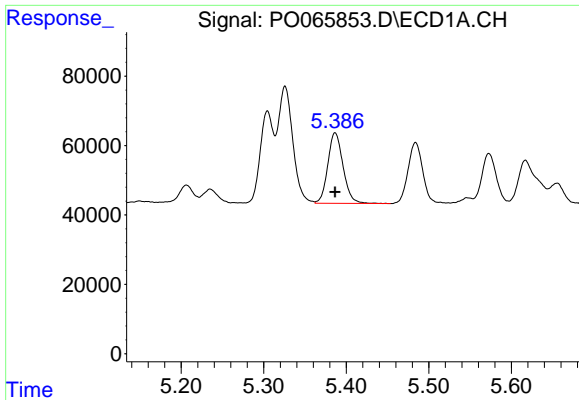
#4 AR-1016-2

R.T.: 5.326 min  
 Delta R.T.: 0.000 min  
 Response: 420915  
 Conc: 256.78 ng/ml



#4 AR-1016-2

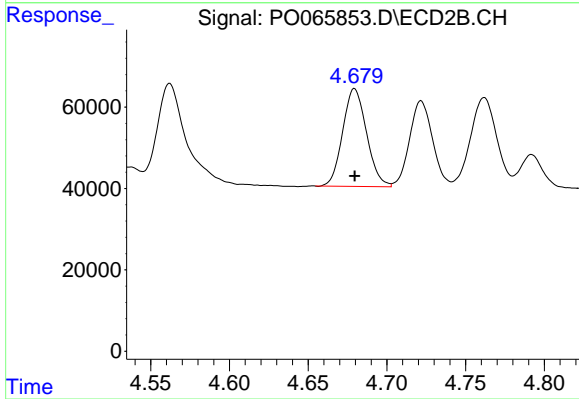
R.T.: 4.507 min  
 Delta R.T.: 0.000 min  
 Response: 486417  
 Conc: 267.43 ng/ml



#5 AR-1016-3

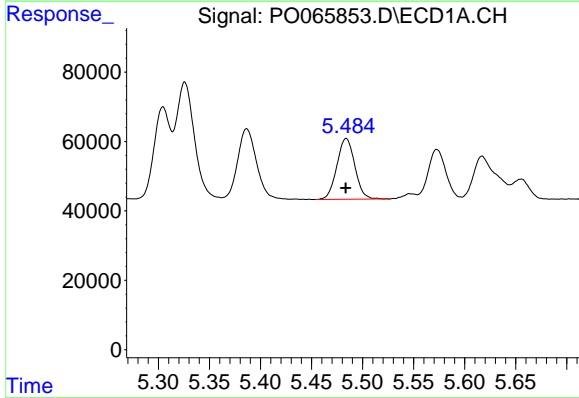
R.T.: 5.386 min  
 Delta R.T.: 0.000 min  
 Response: 260938  
 Conc: 260.11 ng/ml

Instrument :  
 ECD\_O  
 ClientSampleId :  
 AR1660ICC250



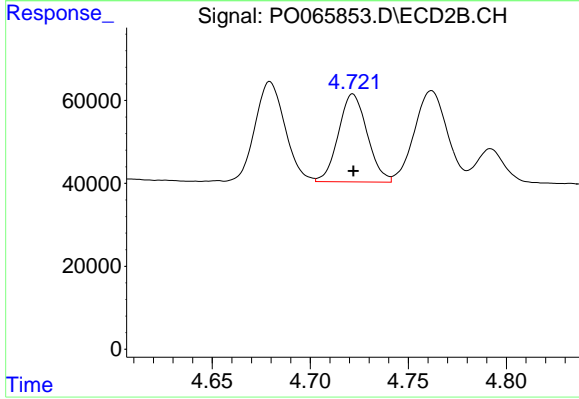
#5 AR-1016-3

R.T.: 4.680 min  
 Delta R.T.: 0.000 min  
 Response: 254009  
 Conc: 265.94 ng/ml



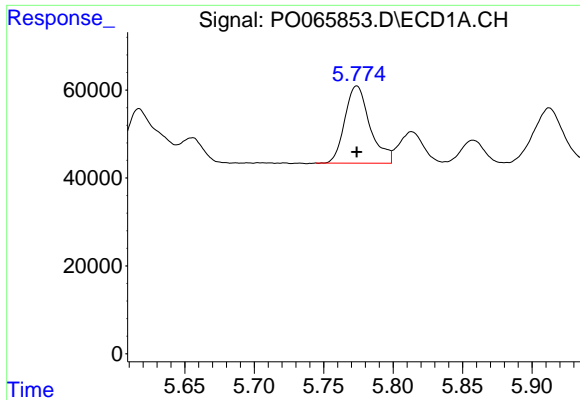
#6 AR-1016-4

R.T.: 5.484 min  
 Delta R.T.: 0.000 min  
 Response: 214598  
 Conc: 256.34 ng/ml



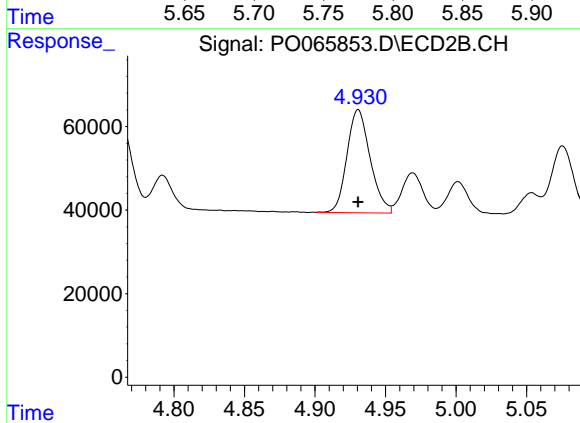
#6 AR-1016-4

R.T.: 4.722 min  
 Delta R.T.: 0.000 min  
 Response: 216873  
 Conc: 268.77 ng/ml

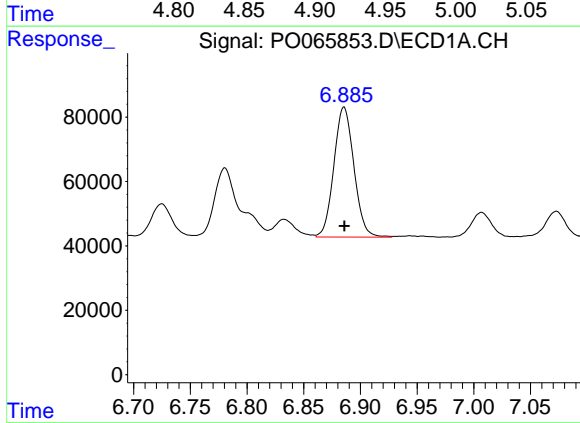


#7 AR-1016-5  
 R.T.: 5.774 min  
 Delta R.T.: 0.000 min  
 Response: 220751  
 Conc: 257.63 ng/ml

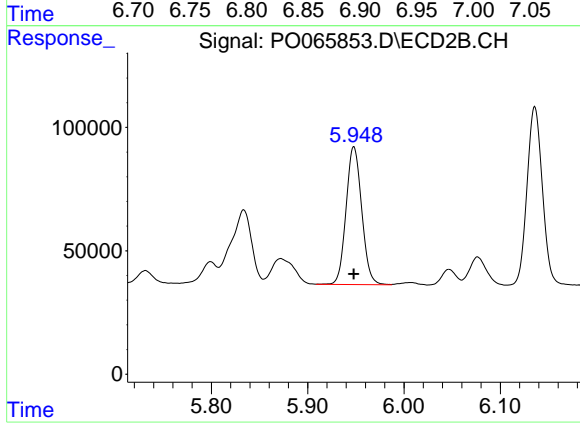
Instrument :  
 ECD\_O  
 ClientSampled :  
 AR1660ICC250



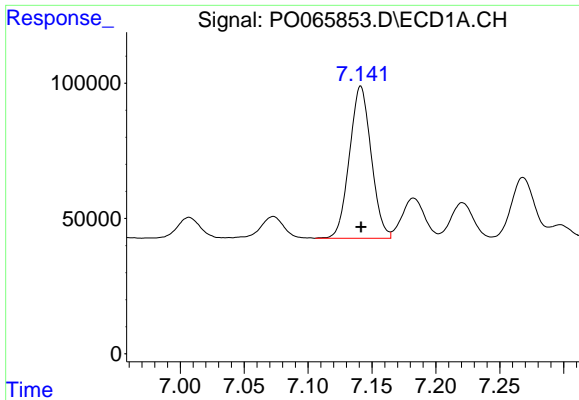
#7 AR-1016-5  
 R.T.: 4.931 min  
 Delta R.T.: 0.000 min  
 Response: 282695  
 Conc: 268.39 ng/ml



#31 AR-1260-1  
 R.T.: 6.886 min  
 Delta R.T.: 0.000 min  
 Response: 496453  
 Conc: 267.51 ng/ml



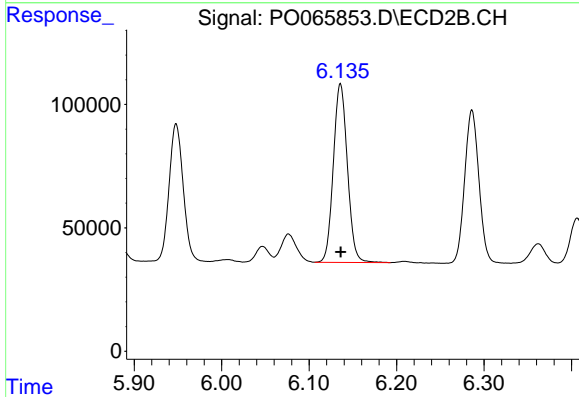
#31 AR-1260-1  
 R.T.: 5.948 min  
 Delta R.T.: 0.000 min  
 Response: 627153  
 Conc: 271.67 ng/ml



#32 AR-1260-2

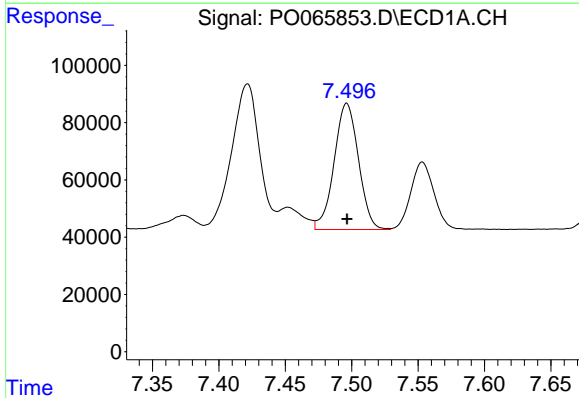
R.T.: 7.141 min  
 Delta R.T.: 0.000 min  
 Response: 665377  
 Conc: 264.27 ng/ml

Instrument :  
 ECD\_O  
 ClientSampleId :  
 AR1660ICC250



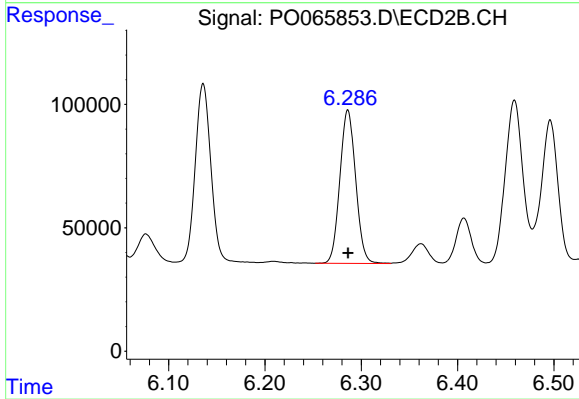
#32 AR-1260-2

R.T.: 6.136 min  
 Delta R.T.: 0.000 min  
 Response: 808923  
 Conc: 271.15 ng/ml



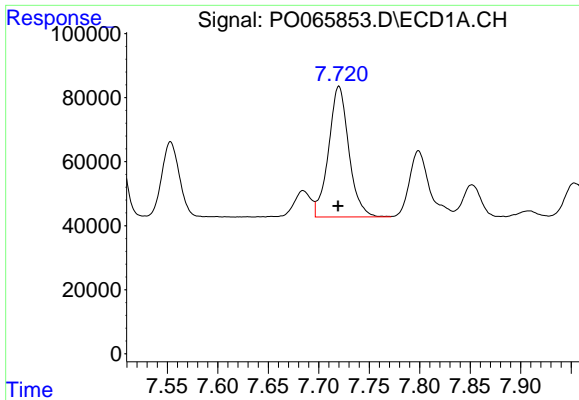
#33 AR-1260-3

R.T.: 7.496 min  
 Delta R.T.: 0.000 min  
 Response: 562179  
 Conc: 266.12 ng/ml



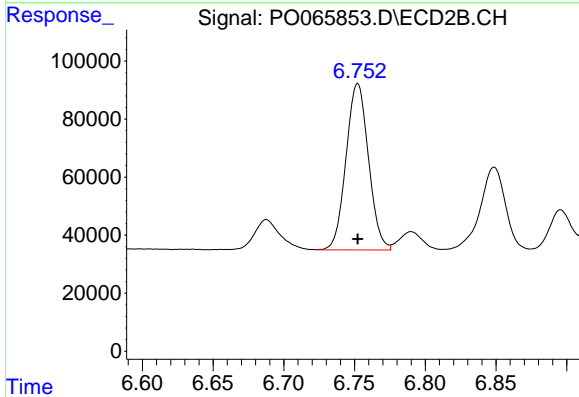
#33 AR-1260-3

R.T.: 6.286 min  
 Delta R.T.: 0.000 min  
 Response: 706764  
 Conc: 266.60 ng/ml

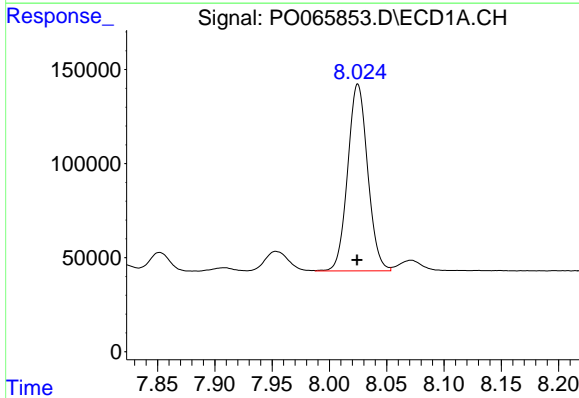


#34 AR-1260-4  
 R.T.: 7.720 min  
 Delta R.T.: 0.000 min  
 Response: 568735  
 Conc: 264.79 ng/ml

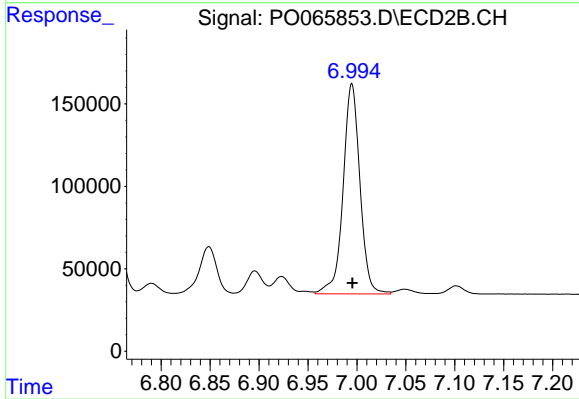
**Instrument :**  
 ECD\_O  
**ClientSampled :**  
 AR1660ICC250



#34 AR-1260-4  
 R.T.: 6.752 min  
 Delta R.T.: 0.000 min  
 Response: 633751  
 Conc: 265.48 ng/ml



#35 AR-1260-5  
 R.T.: 8.025 min  
 Delta R.T.: 0.000 min  
 Response: 1206496  
 Conc: 255.61 ng/ml



#35 AR-1260-5  
 R.T.: 6.995 min  
 Delta R.T.: 0.000 min  
 Response: 1527237  
 Conc: 258.47 ng/ml