

Data Path : Z:\pestpcbsrv\HPCHEM1\ECD_0\Data\P0012323\
 Data File : P0092246.D
 Signal(s) : Signal #1: ECD1A.ch Signal #2: ECD2B.ch
 Acq On : 23 Jan 2023 23:10
 Operator : YP/AJ
 Sample : AR1262ICC500
 Misc :
 ALS Vial : 25 Sample Multiplier: 1

Instrument :
 ECD_0
 ClientSampleId :
 AR1262ICC500

Integration File signal 1: autoint1.e
 Integration File signal 2: autoint2.e
 Quant Time: Jan 24 04:01:31 2023
 Quant Method : Z:\pestpcbsrv\HPCHEM1\ECD_0\methods\P0012323.M
 Quant Title : GC EXTRACTABLES
 QLast Update : Tue Jan 24 03:59:04 2023
 Response via : Initial Calibration
 Integrator: ChemStation

Volume Inj. : 2 µl
 Signal #1 Phase : ZB-MR1 Signal #2 Phase: ZB-MR2
 Signal #1 Info : 30Mx0.32mmx 0.50µ Signal #2 Info : 30M x 0.32mm x 0.25µm

Compound	RT#1	RT#2	Resp#1	Resp#2	ng/ml	ng/ml

System Monitoring Compounds						
1) SA Tetrachlo...	4.448	3.646	142.9E6	68690272	50.000	50.000
2) SA Decachlor...	10.369	8.689	104.1E6	57167592	50.000	50.000
Target Compounds						
36) L8 AR-1262-1	7.820	6.741	54025031	23204903	500.000	500.000
37) L8 AR-1262-2	8.468	7.286	119.4E6	73769140	500.000	500.000
38) L8 AR-1262-3	8.797	7.572	84522780	31248422	500.000	500.000
39) L8 AR-1262-4	8.886	7.636	69865322	54780307	773.307	500.000 #
40) L8 AR-1262-5	9.575	8.134	44714943	25763099	500.000	500.000

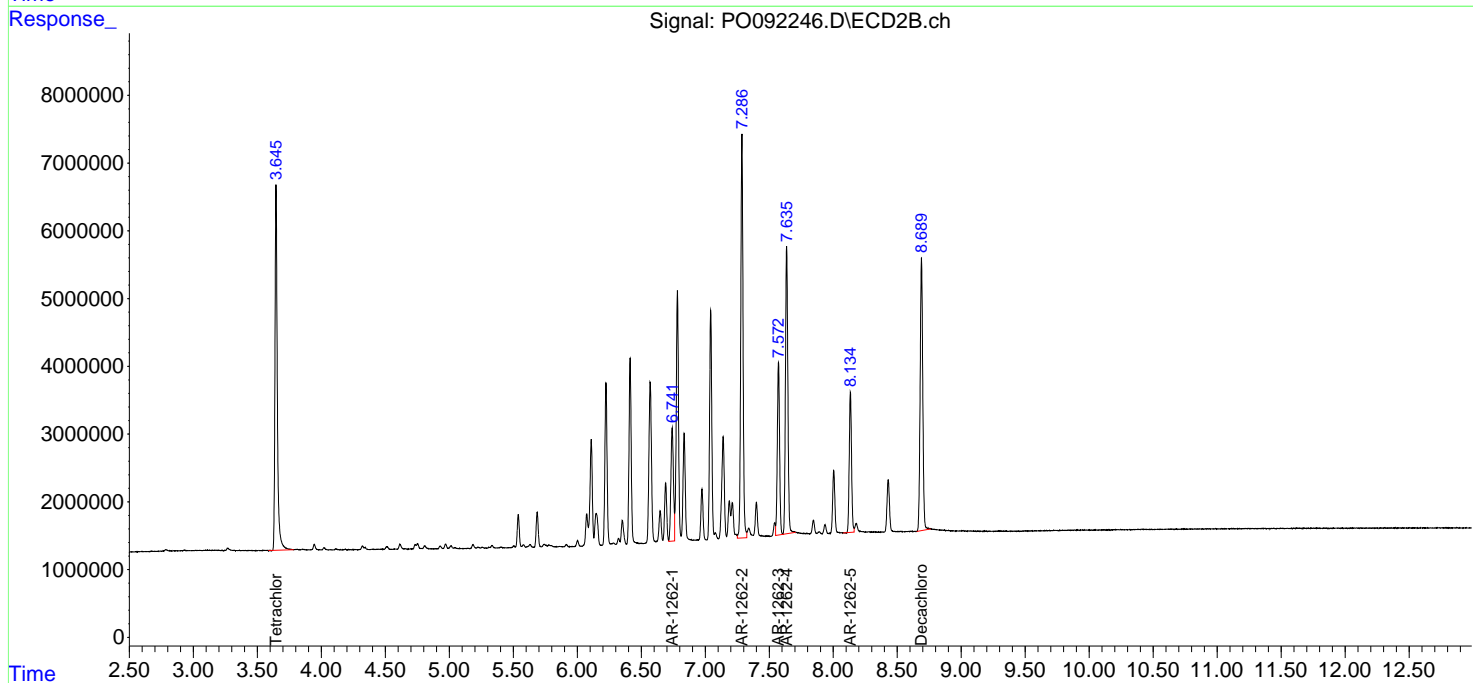
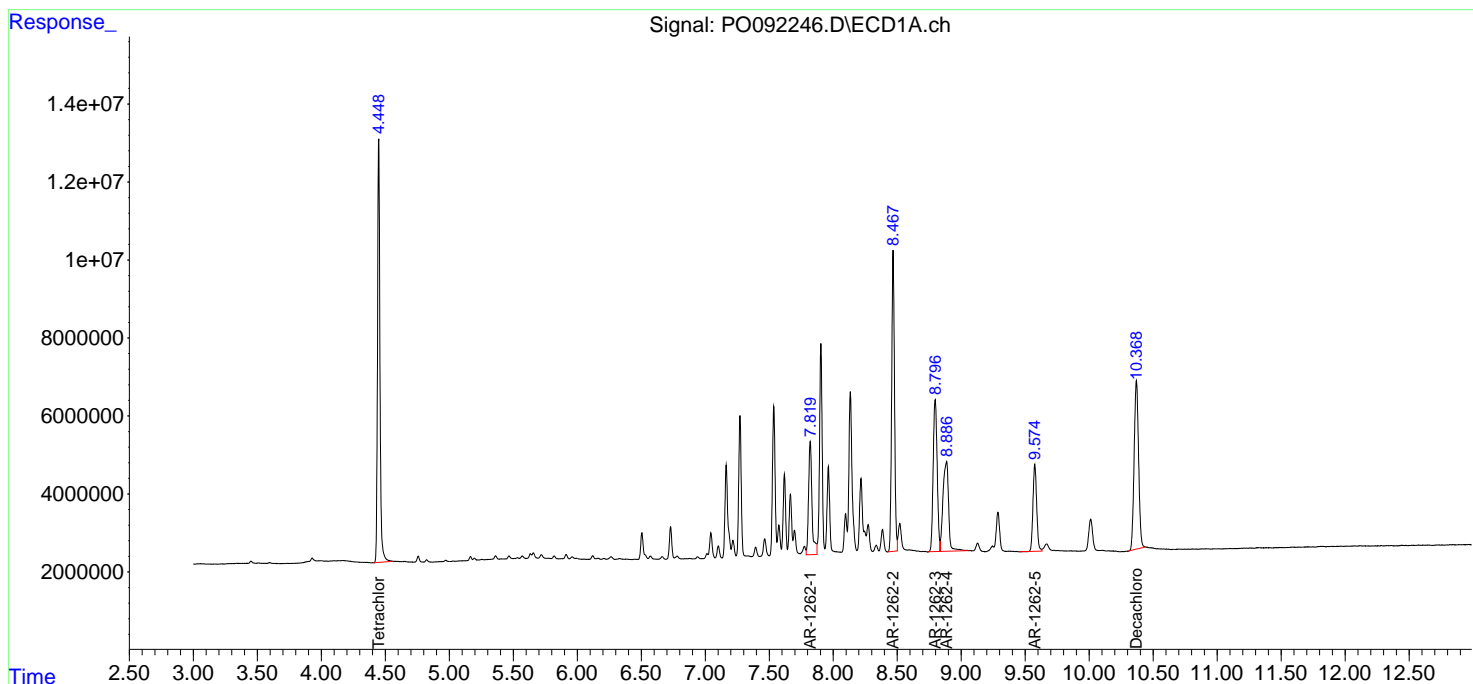
(f)=RT Delta > 1/2 Window (#)=Amounts differ by > 25% (m)=manual int.

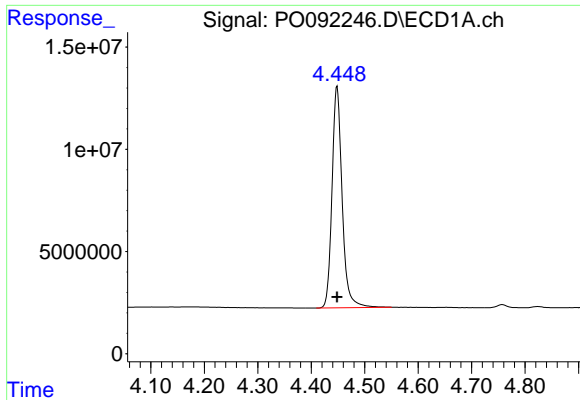
Data Path : Z:\pestpcbsrv\HPCHEM1\ECD_O\Data\P0012323\
 Data File : P0092246.D
 Signal(s) : Signal #1: ECD1A.ch Signal #2: ECD2B.ch
 Acq On : 23 Jan 2023 23:10
 Operator : YP/AJ
 Sample : AR1262ICC500
 Misc :
 ALS Vial : 25 Sample Multiplier: 1

Instrument :
 ECD_O
 ClientSampleId :
 AR1262ICC500

Integration File signal 1: autoint1.e
 Integration File signal 2: autoint2.e
 Quant Time: Jan 24 04:01:31 2023
 Quant Method : Z:\pestpcbsrv\HPCHEM1\ECD_O\methods\P0012323.M
 Quant Title : GC EXTRACTABLES
 QLast Update : Tue Jan 24 03:59:04 2023
 Response via : Initial Calibration
 Integrator: ChemStation

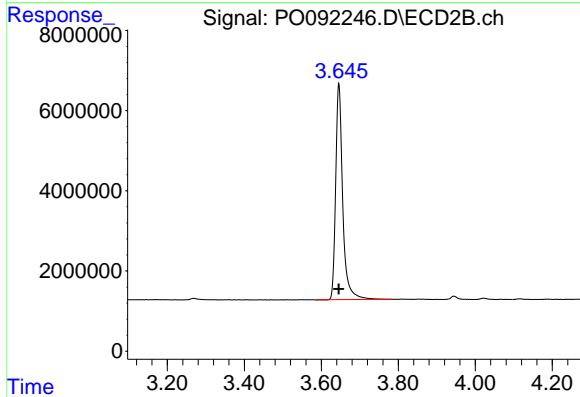
Volume Inj. : 2 µl
 Signal #1 Phase : ZB-MR1 Signal #2 Phase: ZB-MR2
 Signal #1 Info : 30Mx0.32mmx 0.50µ Signal #2 Info : 30M x 0.32mm x 0.25µm



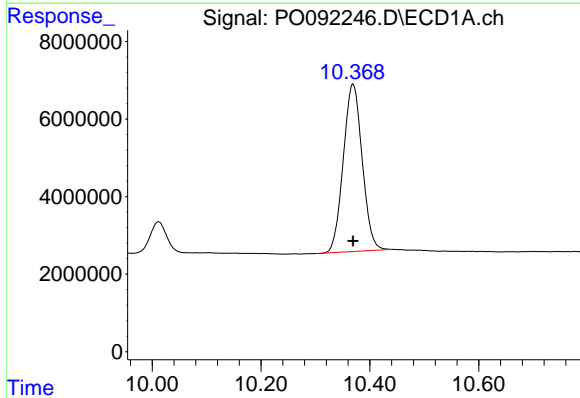


#1 Tetrachloro-m-xylene
 R.T.: 4.448 min
 Delta R.T.: 0.000 min
 Response: 142912153
 Conc: 50.00 ng/ml

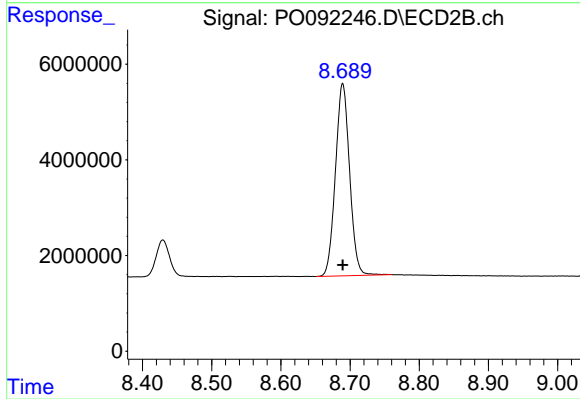
Instrument :
 ECD_O
 ClientSampleId :
 AR1262ICC500



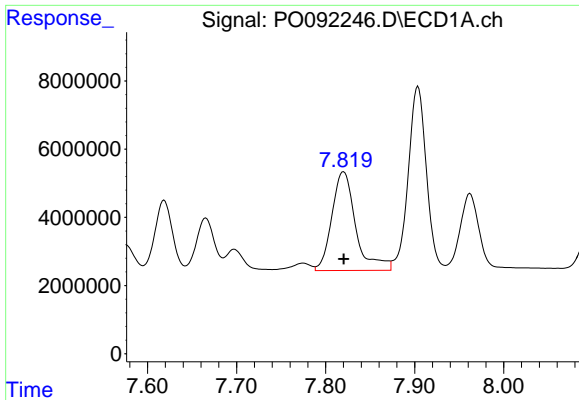
#1 Tetrachloro-m-xylene
 R.T.: 3.646 min
 Delta R.T.: 0.000 min
 Response: 68690272
 Conc: 50.00 ng/ml



#2 Decachlorobiphenyl
 R.T.: 10.369 min
 Delta R.T.: 0.000 min
 Response: 104117264
 Conc: 50.00 ng/ml



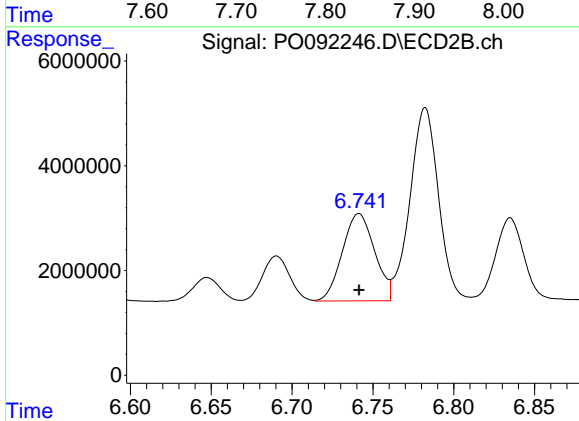
#2 Decachlorobiphenyl
 R.T.: 8.689 min
 Delta R.T.: 0.000 min
 Response: 57167592
 Conc: 50.00 ng/ml



#36 AR-1262-1

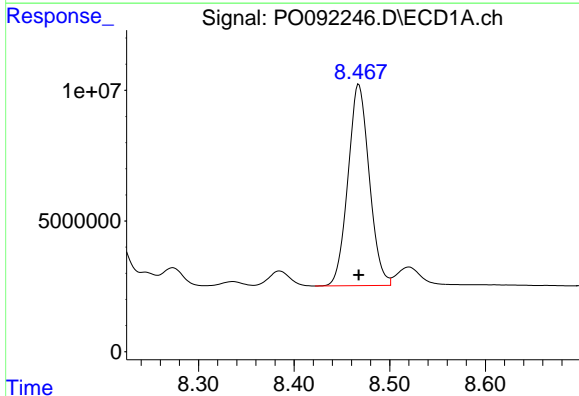
R.T.: 7.820 min
 Delta R.T.: 0.000 min
 Response: 54025031
 Conc: 500.00 ng/ml

Instrument :
 ECD_O
 ClientSampleId :
 AR1262ICC500



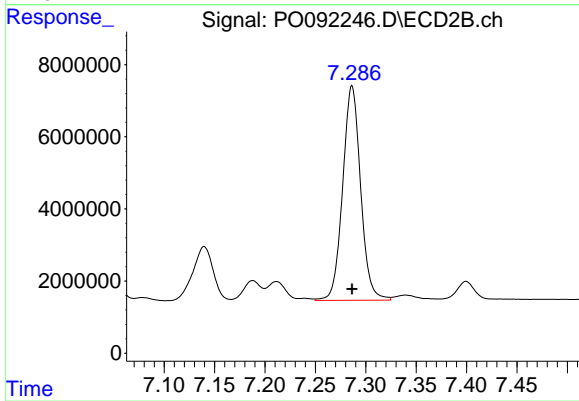
#36 AR-1262-1

R.T.: 6.741 min
 Delta R.T.: 0.000 min
 Response: 23204903
 Conc: 500.00 ng/ml



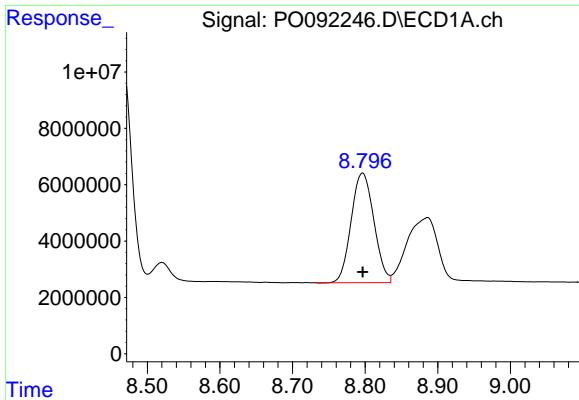
#37 AR-1262-2

R.T.: 8.468 min
 Delta R.T.: 0.000 min
 Response: 119359125
 Conc: 500.00 ng/ml



#37 AR-1262-2

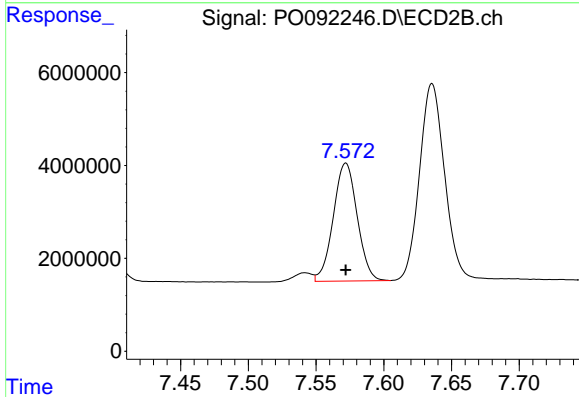
R.T.: 7.286 min
 Delta R.T.: 0.000 min
 Response: 73769140
 Conc: 500.00 ng/ml



#38 AR-1262-3

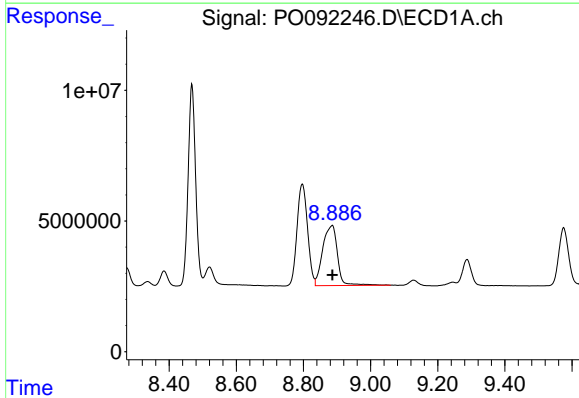
R.T.: 8.797 min
 Delta R.T.: 0.000 min
 Response: 84522780
 Conc: 500.00 ng/ml

Instrument :
 ECD_O
 ClientSampleId :
 AR1262ICC500



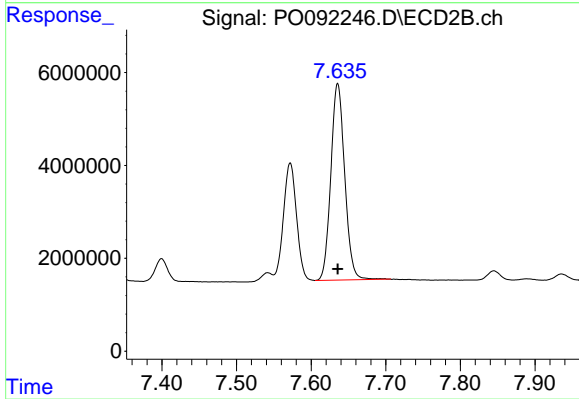
#38 AR-1262-3

R.T.: 7.572 min
 Delta R.T.: 0.000 min
 Response: 31248422
 Conc: 500.00 ng/ml



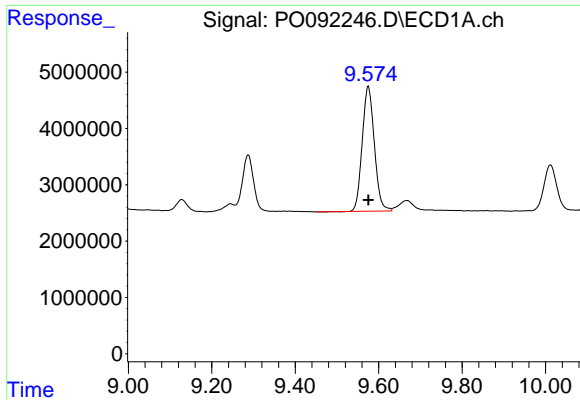
#39 AR-1262-4

R.T.: 8.886 min
 Delta R.T.: 0.000 min
 Response: 69865322
 Conc: 773.31 ng/ml



#39 AR-1262-4

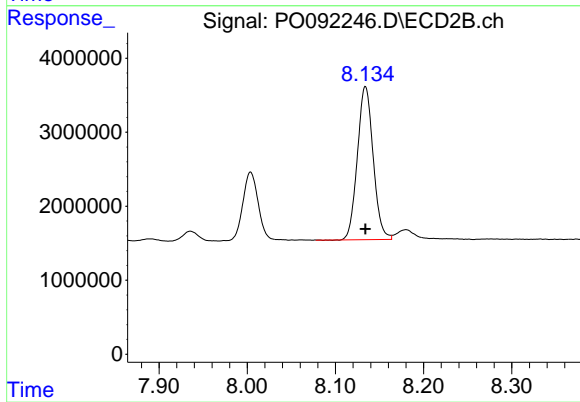
R.T.: 7.636 min
 Delta R.T.: 0.000 min
 Response: 54780307
 Conc: 500.00 ng/ml



#40 AR-1262-5

R.T.: 9.575 min
Delta R.T.: 0.000 min
Response: 44714943
Conc: 500.00 ng/ml

Instrument :
ECD_O
ClientSampleId :
AR1262ICC500



#40 AR-1262-5

R.T.: 8.134 min
Delta R.T.: 0.000 min
Response: 25763099
Conc: 500.00 ng/ml