

Data Path : Z:\pestpcbsrv\HPCHEM1\ECD\_0\Data\P0012325\  
 Data File : P0109068.D  
 Signal(s) : Signal #1: ECD1A.ch Signal #2: ECD2B.ch  
 Acq On : 23 Jan 2025 17:03  
 Operator : YP/AJ  
 Sample : Q1156-01  
 Misc :  
 ALS Vial : 21 Sample Multiplier: 1

**Instrument :**  
 ECD\_0  
**ClientSampleId :**  
 281

**Manual Integrations**  
**APPROVED**

Reviewed By :Yogesh Patel 01/24/2025  
 Supervised By :Sohil Jodhani 01/24/2025

Integration File signal 1: autoint1.e  
 Integration File signal 2: autoint2.e  
 Quant Time: Jan 24 00:38:23 2025  
 Quant Method : Z:\pestpcbsrv\HPCHEM1\ECD\_0\methods\P0012125.M  
 Quant Title : GC EXTRACTABLES  
 QLast Update : Wed Jan 22 03:46:11 2025  
 Response via : Initial Calibration  
 Integrator: ChemStation

Volume Inj. : 2 µl  
 Signal #1 Phase : ZB-MR1 Signal #2 Phase: ZB-MR2  
 Signal #1 Info : 30Mx0.32mmx 0.50µ Signal #2 Info : 30M x 0.32mm x 0.25µm

Compound	RT#1	RT#2	Resp#1	Resp#2	ng/ml	ng/ml
-----						
System Monitoring Compounds						
1) SA Tetrachlo...	3.700	3.696	158.8E6	108.8E6	21.018	20.294m
2) SA Decachlor...	8.761	8.712	105.4E6	56550299	15.207	16.445

Target Compounds

(f)=RT Delta > 1/2 Window (#)=Amounts differ by > 25% (m)=manual int.

Data Path : Z:\pestpcbsrv\HPCHEM1\ECD\_0\Data\P0012325\  
 Data File : P0109068.D  
 Signal(s) : Signal #1: ECD1A.ch Signal #2: ECD2B.ch  
 Acq On : 23 Jan 2025 17:03  
 Operator : YP/AJ  
 Sample : Q1156-01  
 Misc :  
 ALS Vial : 21 Sample Multiplier: 1

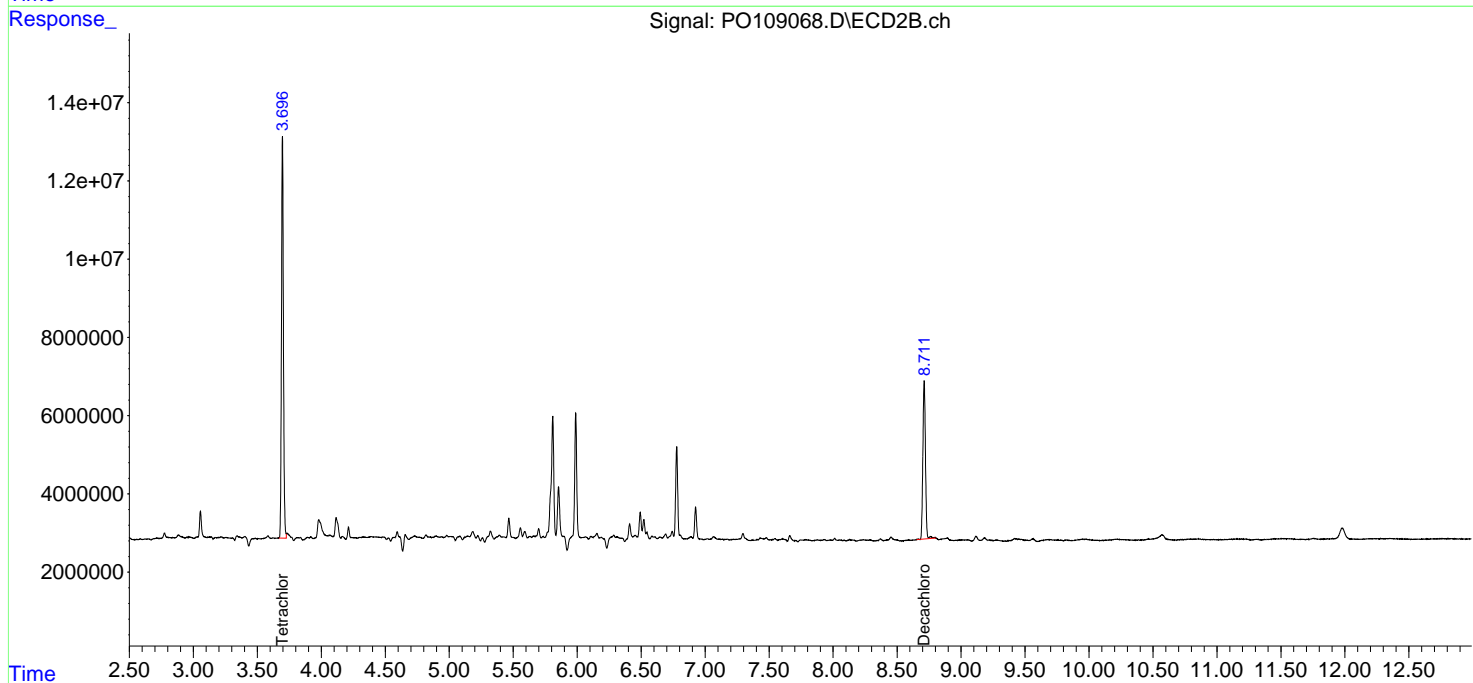
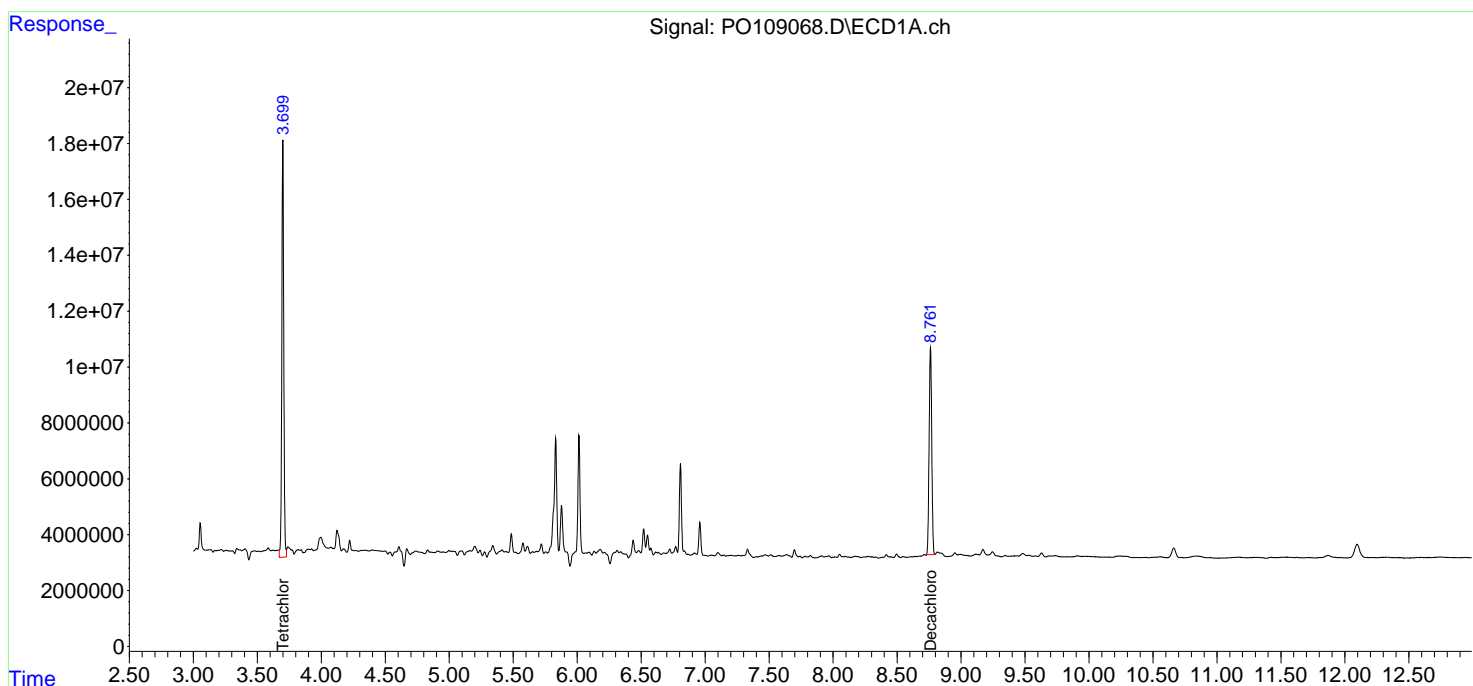
Instrument :  
 ECD\_0  
 ClientSampleId :  
 281

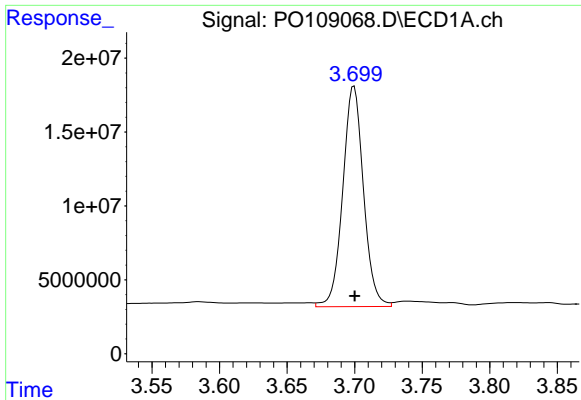
Manual Integrations  
**APPROVED**

Reviewed By :Yogesh Patel 01/24/2025  
 Supervised By :Sohil Jodhani 01/24/2025

Integration File signal 1: autoint1.e  
 Integration File signal 2: autoint2.e  
 Quant Time: Jan 24 00:38:23 2025  
 Quant Method : Z:\pestpcbsrv\HPCHEM1\ECD\_0\methods\P0012125.M  
 Quant Title : GC EXTRACTABLES  
 QLast Update : Wed Jan 22 03:46:11 2025  
 Response via : Initial Calibration  
 Integrator: ChemStation

Volume Inj. : 2 µl  
 Signal #1 Phase : ZB-MR1 Signal #2 Phase: ZB-MR2  
 Signal #1 Info : 30Mx0.32mmx 0.50µm Signal #2 Info : 30M x 0.32mm x 0.25µm



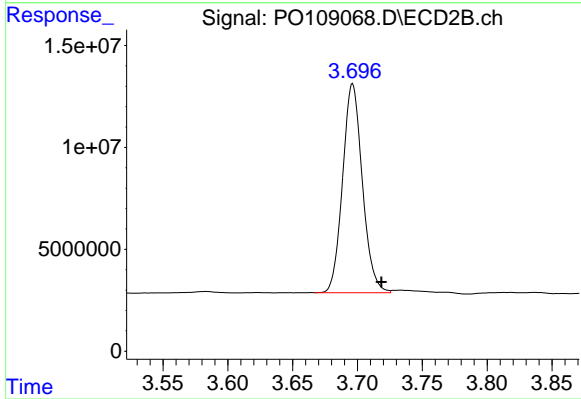


#1 Tetrachloro-m-xylene  
 R.T.: 3.700 min  
 Delta R.T.: 0.000 min  
 Response: 158823395  
 Conc: 21.02 ng/ml

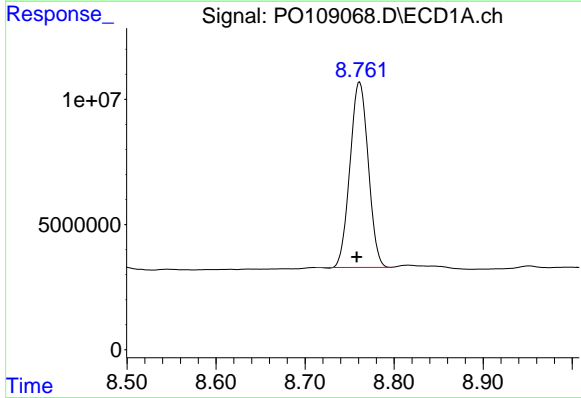
Instrument :  
 ECD\_O  
 ClientSampleId :  
 281

Manual Integrations  
 APPROVED

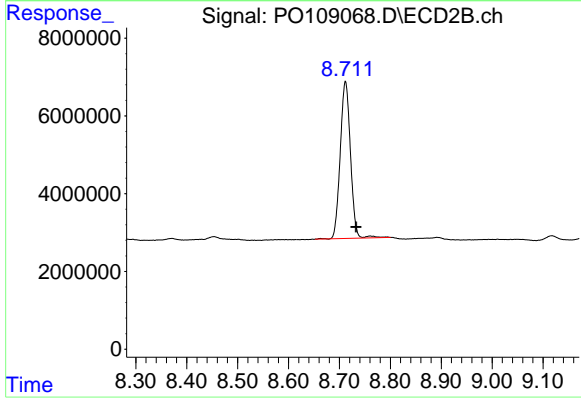
Reviewed By :Yogesh Patel 01/24/2025  
 Supervised By :Sohil Jodhani 01/24/2025



#1 Tetrachloro-m-xylene  
 R.T.: 3.696 min  
 Delta R.T.: -0.023 min  
 Response: 108783655  
 Conc: 20.29 ng/ml m



#2 Decachlorobiphenyl  
 R.T.: 8.761 min  
 Delta R.T.: 0.003 min  
 Response: 105351632  
 Conc: 15.21 ng/ml



#2 Decachlorobiphenyl  
 R.T.: 8.712 min  
 Delta R.T.: -0.021 min  
 Response: 56550299  
 Conc: 16.45 ng/ml