

Data Path : Z:\pestpcbsrv\HPCHEM1\ECD_0\Data\P0012420\
 Data File : P0065886.D
 Signal(s) : Signal #1: ECD1A.CH Signal #2: ECD2B.CH
 Acq On : 24 Jan 2020 12:43
 Operator : DD\AJ
 Sample : L1230-03
 Misc :
 ALS Vial : 11 Sample Multiplier: 1

Instrument :
 ECD_0
 ClientSampleId :
 STOCK-PILE-B

Integration File signal 1: autoint1.e
 Integration File signal 2: autoint2.e
 Quant Time: Jan 24 13:41:49 2020
 Quant Method : Z:\pestpcbsrv\HPCHEM1\ECD_0\methods\P0012320.M
 Quant Title : GC EXTRACTABLES
 QLast Update : Fri Jan 24 03:54:38 2020
 Response via : Initial Calibration
 Integrator: ChemStation 6890 Scale Mode: Small noise peaks clipped

Volume Inj. : 2 µl
 Signal #1 Phase : ZB-MR1 Signal #2 Phase: ZB-MR2
 Signal #1 Info : 30Mx0.32mmx 0.50µ Signal #2 Info : 30M x 0.32mm x 0.25µm

Compound	RT#1	RT#2	Resp#1	Resp#2	ng/ml	ng/ml

System Monitoring Compounds						
1) SA Tetrachlo...	4.154	3.431	550128	664781	23.725	25.028
2) SA Decachlor...	9.649	8.328	873775	1096066	20.990	22.555

Target Compounds

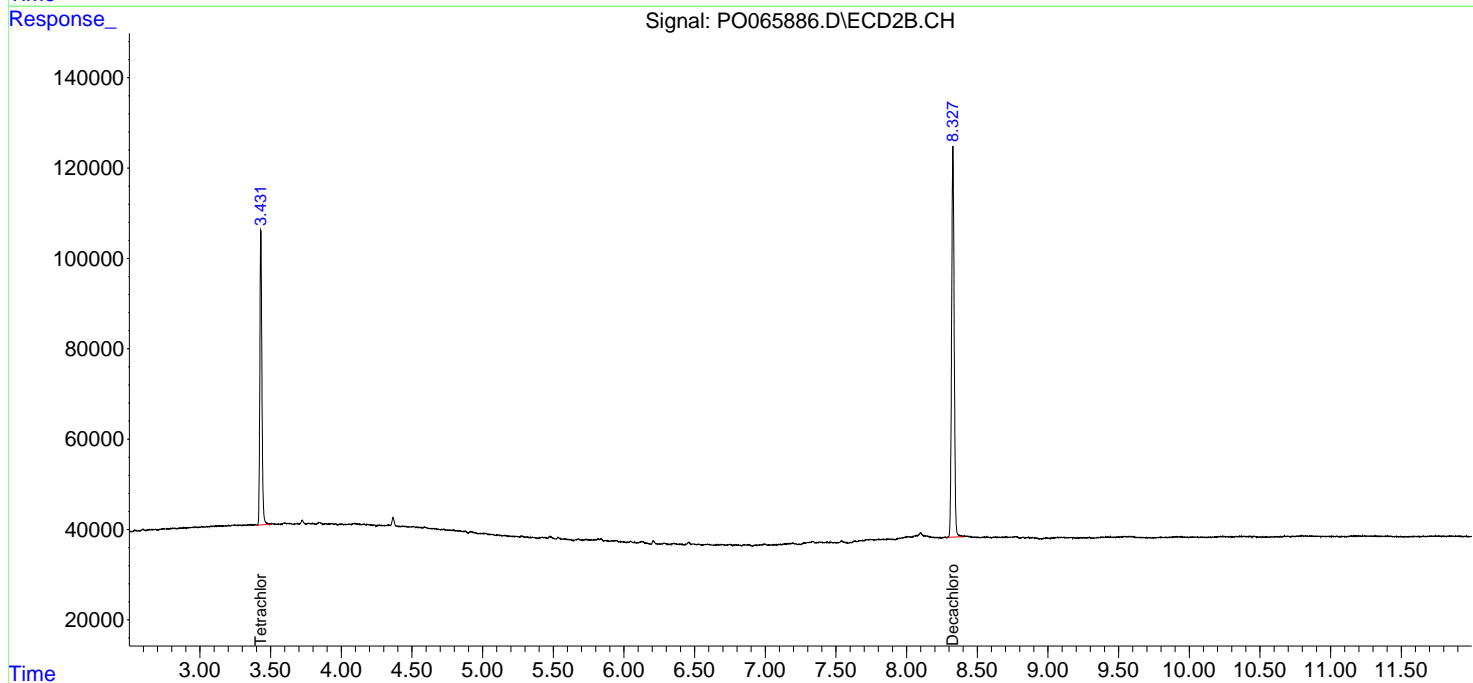
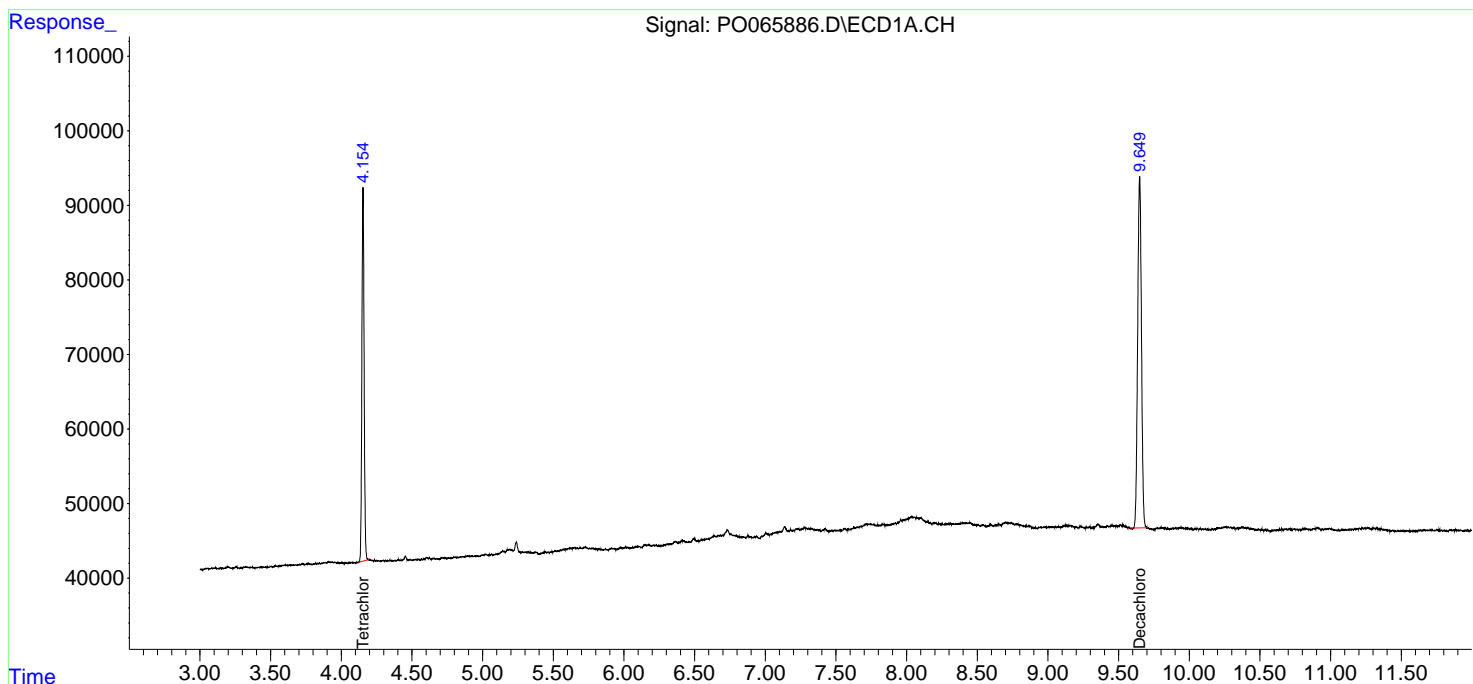
(f)=RT Delta > 1/2 Window (#)=Amounts differ by > 25% (m)=manual int.

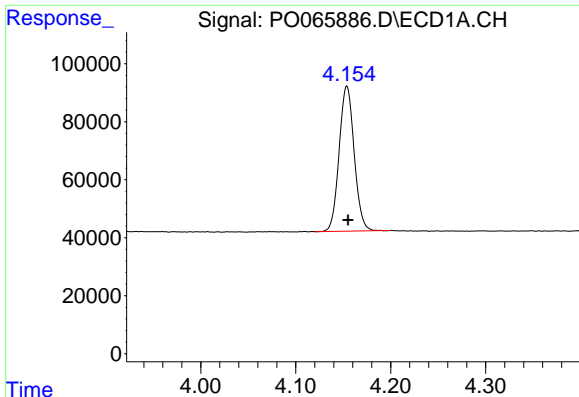
Data Path : Z:\pestpcbsrv\HPCHEM1\ECD_0\Data\P0012420\
 Data File : P0065886.D
 Signal(s) : Signal #1: ECD1A.CH Signal #2: ECD2B.CH
 Acq On : 24 Jan 2020 12:43
 Operator : DD\AJ
 Sample : L1230-03
 Misc :
 ALS Vial : 11 Sample Multiplier: 1

Instrument :
 ECD_O
 ClientSampleId :
 STOCK-PILE-B

Integration File signal 1: autoint1.e
 Integration File signal 2: autoint2.e
 Quant Time: Jan 24 13:41:49 2020
 Quant Method : Z:\pestpcbsrv\HPCHEM1\ECD_0\methods\P0012320.M
 Quant Title : GC EXTRACTABLES
 QLast Update : Fri Jan 24 03:54:38 2020
 Response via : Initial Calibration
 Integrator: ChemStation 6890 Scale Mode: Small noise peaks clipped

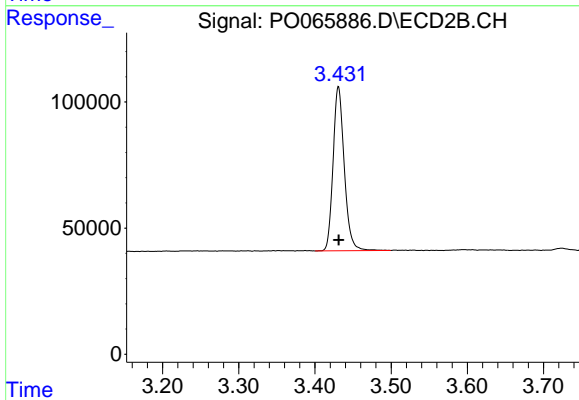
Volume Inj. : 2 µl
 Signal #1 Phase : ZB-MR1 Signal #2 Phase: ZB-MR2
 Signal #1 Info : 30Mx0.32mmx 0.50µ Signal #2 Info : 30M x 0.32mm x 0.25µm



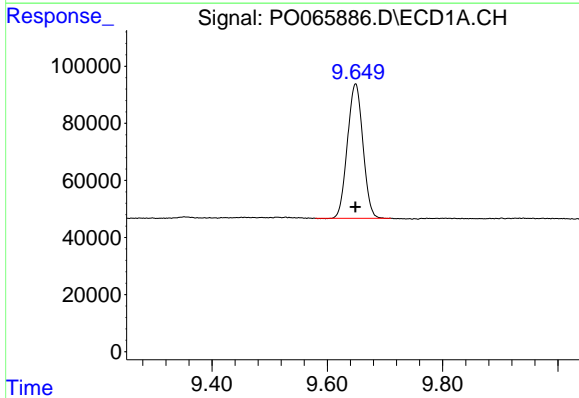


#1 Tetrachloro-m-xylene
 R.T.: 4.154 min
 Delta R.T.: -0.001 min
 Response: 550128
 Conc: 23.72 ng/ml

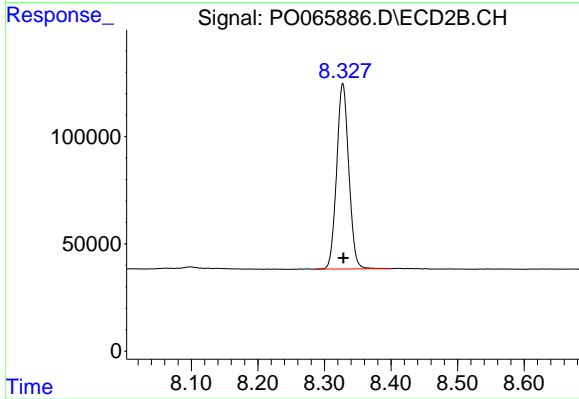
Instrument :
 ECD_O
 ClientSampleId :
 STOCK-PILE-B



#1 Tetrachloro-m-xylene
 R.T.: 3.431 min
 Delta R.T.: 0.000 min
 Response: 664781
 Conc: 25.03 ng/ml



#2 Decachlorobiphenyl
 R.T.: 9.649 min
 Delta R.T.: 0.000 min
 Response: 873775
 Conc: 20.99 ng/ml



#2 Decachlorobiphenyl
 R.T.: 8.328 min
 Delta R.T.: -0.001 min
 Response: 1096066
 Conc: 22.55 ng/ml