

Data Path : Z:\pestpcbsrv\HPCHEM1\ECD_0\Data\P0012420\
 Data File : P0065927.D
 Signal(s) : Signal #1: ECD1A.CH Signal #2: ECD2B.CH
 Acq On : 25 Jan 2020 1:01
 Operator : DD\AJ
 Sample : L1243-07
 Misc :
 ALS Vial : 46 Sample Multiplier: 1

Instrument :
 ECD_0
ClientSampleId :
 CTY-SB-04-0-5

Manual Integrations
APPROVED
 mohammad
 1/27/2020 5:52:36 PM

Integration File signal 1: autoint1.e
 Integration File signal 2: autoint2.e
 Quant Time: Jan 25 03:22:01 2020
 Quant Method : Z:\pestpcbsrv\HPCHEM1\ECD_0\methods\P0012320.M
 Quant Title : GC EXTRACTABLES
 QLast Update : Fri Jan 24 03:54:38 2020
 Response via : Initial Calibration
 Integrator: ChemStation 6890 Scale Mode: Small noise peaks clipped

Volume Inj. : 2 µl
 Signal #1 Phase : ZB-MR2 Signal #2 Phase: ZB-MR2
 Signal #1 Info : 30Mx0.32mmx 0.50µ Signal #2 Info : 30M x 0.32mm x 0.25µm

Compound	RT#1	RT#2	Resp#1	Resp#2	ng/ml	ng/ml

System Monitoring Compounds						
1) SA Tetrachlo...	4.154	3.432	822618	1056202	35.476m	39.765
2) SA Decachlor...	9.648	8.328	698405	881286	16.778	18.135
Target Compounds						
26) L6 AR-1254-1	6.149	5.279	611632	461321	460.806	206.314 #
27) L6 AR-1254-2	6.365	5.421	753160	145313	345.739	70.747 #
28) L6 AR-1254-3	6.725	5.819	364202	488193	149.771	143.965
29) L6 AR-1254-4	7.009	6.046	229758	88367	109.631	38.578 #
30) L6 AR-1254-5	7.417	6.458	911248	857479	424.702	265.160 #
31) L7 AR-1260-1	6.883	5.947	299066	815283	154.353	336.578 #
32) L7 AR-1260-2	7.138	6.135	596395	325671	227.430	102.779 #
33) L7 AR-1260-3	7.495	6.284	224186	341793	103.158	123.605
34) L7 AR-1260-4	7.718	6.751	464077	253072	209.357	102.543 #
35) L7 AR-1260-5	8.025	6.991	718364	1422783	148.361	234.046 #

(f)=RT Delta > 1/2 Window (#)=Amounts differ by > 25% (m)=manual int.

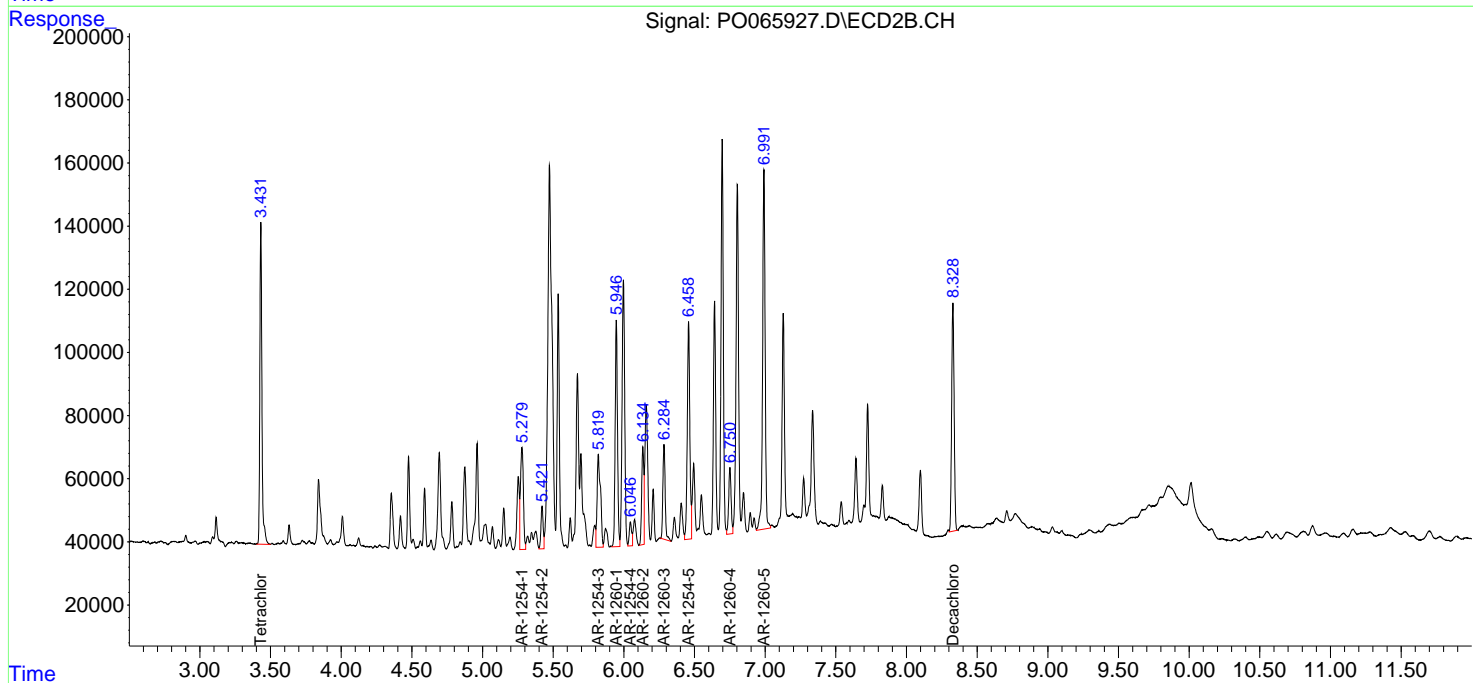
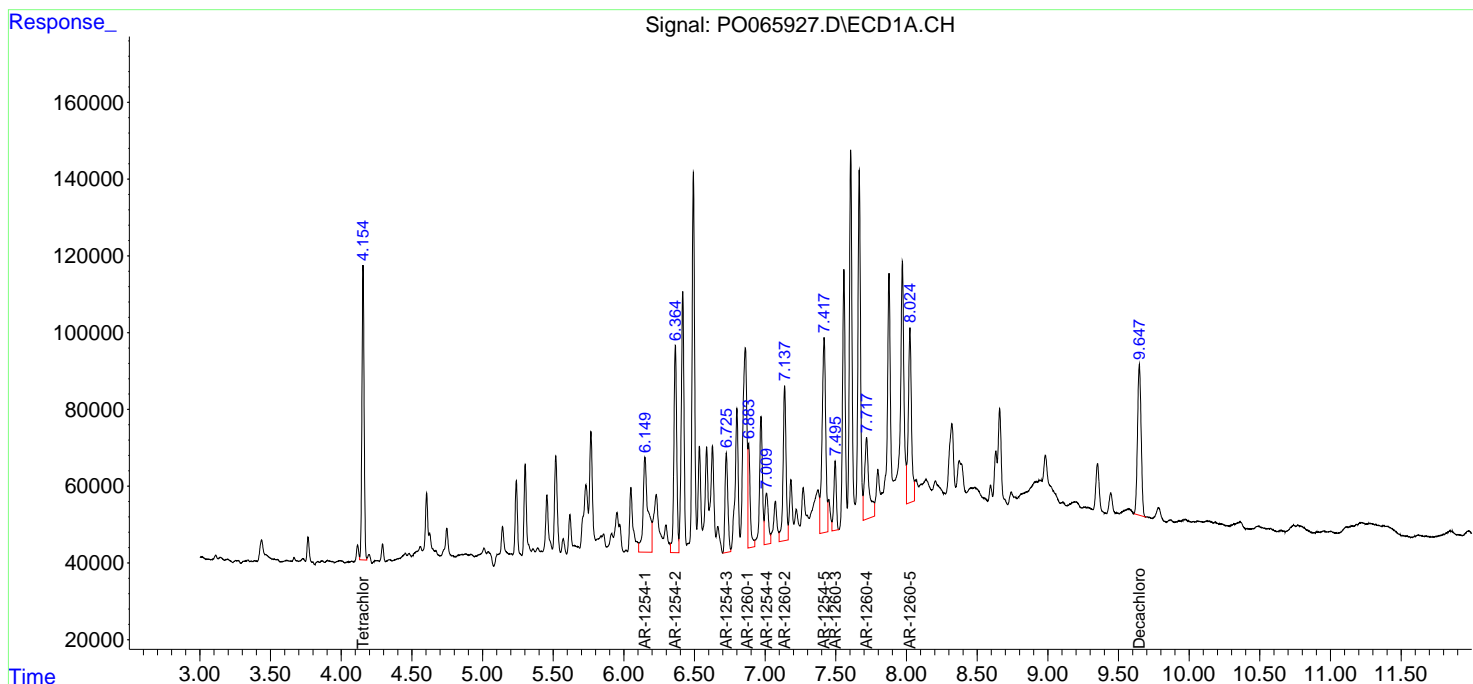
Data Path : Z:\pestpcbsrv\HPCHEM1\ECD_0\Data\P0012420\
 Data File : P0065927.D
 Signal(s) : Signal #1: ECD1A.CH Signal #2: ECD2B.CH
 Acq On : 25 Jan 2020 1:01
 Operator : DD\AJ
 Sample : L1243-07
 Misc :
 ALS Vial : 46 Sample Multiplier: 1

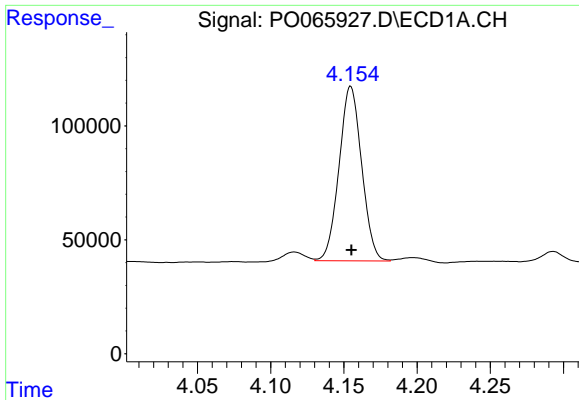
Instrument :
 ECD_O
Client Sampled :
 CTY-SB-04-0-5

Manual Integrations
APPROVED
 mohammad
 1/27/2020 5:52:36 PM

Integration File signal 1: autoint1.e
 Integration File signal 2: autoint2.e
 Quant Time: Jan 25 03:22:01 2020
 Quant Method : Z:\pestpcbsrv\HPCHEM1\ECD_0\methods\P0012320.M
 Quant Title : GC EXTRACTABLES
 QLast Update : Fri Jan 24 03:54:38 2020
 Response via : Initial Calibration
 Integrator: ChemStation 6890 Scale Mode: Small noise peaks clipped

Volume Inj. : 2 µl
 Signal #1 Phase : ZB-MR1 Signal #2 Phase: ZB-MR2
 Signal #1 Info : 30Mx0.32mmx 0.50µ Signal #2 Info : 30M x 0.32mm x 0.25µm





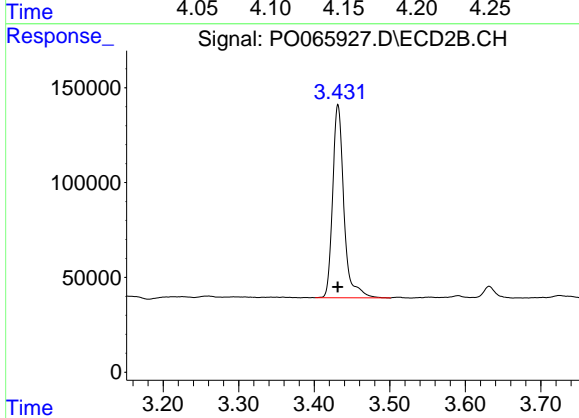
#1 Tetrachloro-m-xylene

R.T.: 4.154 min
 Delta R.T.: 0.000 min
 Response: 822618
 Conc: 35.48 ng/ml m

Instrument :
 ECD_O
 ClientSampled :
 CTY-SB-04-0-5

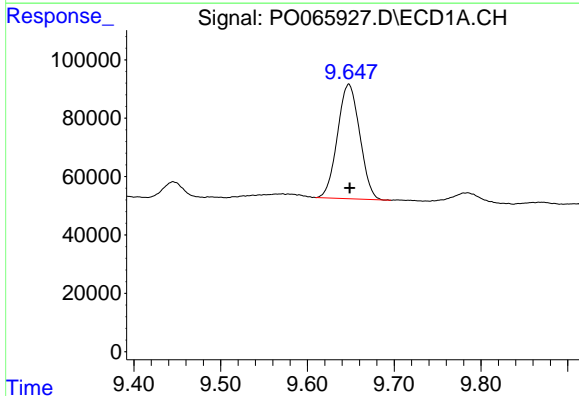
Manual Integrations
 APPROVED

mohammad
 1/27/2020 5:52:36 PM



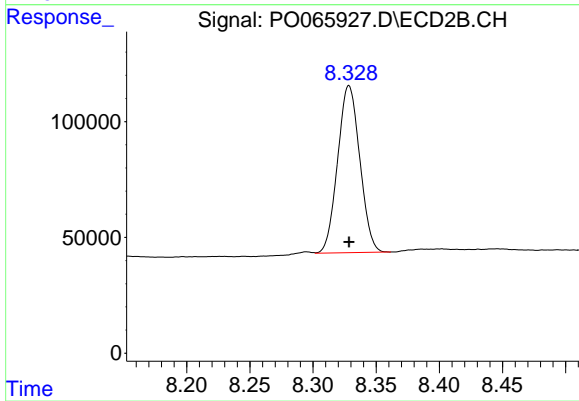
#1 Tetrachloro-m-xylene

R.T.: 3.432 min
 Delta R.T.: 0.000 min
 Response: 1056202
 Conc: 39.76 ng/ml



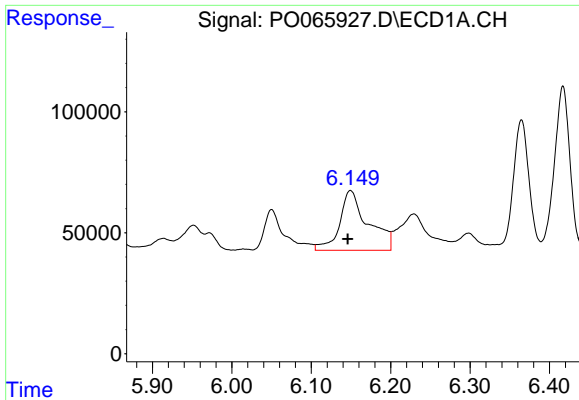
#2 Decachlorobiphenyl

R.T.: 9.648 min
 Delta R.T.: -0.001 min
 Response: 698405
 Conc: 16.78 ng/ml



#2 Decachlorobiphenyl

R.T.: 8.328 min
 Delta R.T.: 0.000 min
 Response: 881286
 Conc: 18.13 ng/ml

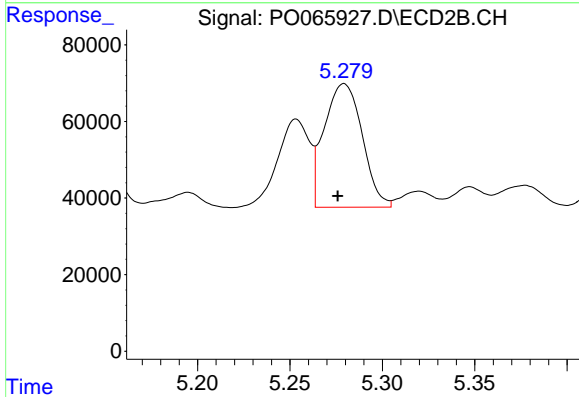


#26 AR-1254-1

R.T.: 6.149 min
 Delta R.T.: 0.004 min
 Response: 611632
 Conc: 460.81 ng/ml

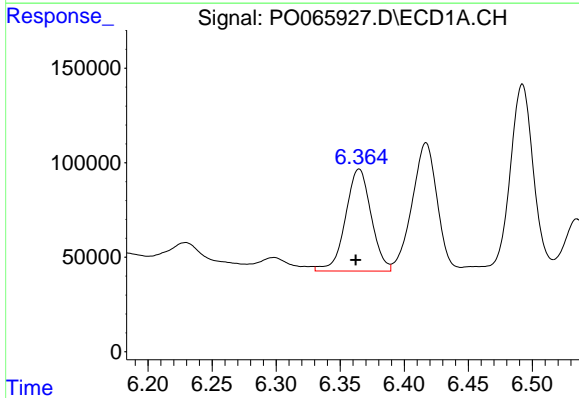
Instrument :
 ECD_O
ClientSampled :
 CTY-SB-04-0-5

Manual Integrations
APPROVED
 mohammad
 1/27/2020 5:52:36 PM



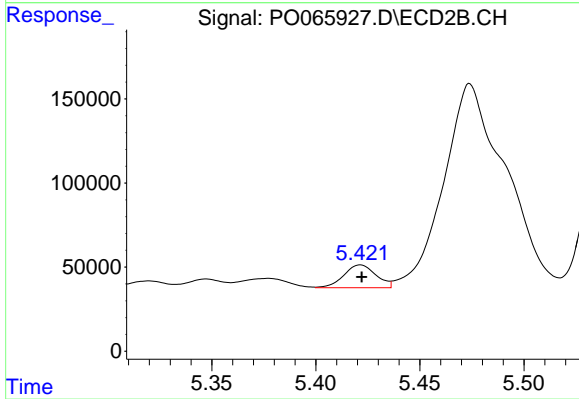
#26 AR-1254-1

R.T.: 5.279 min
 Delta R.T.: 0.003 min
 Response: 461321
 Conc: 206.31 ng/ml



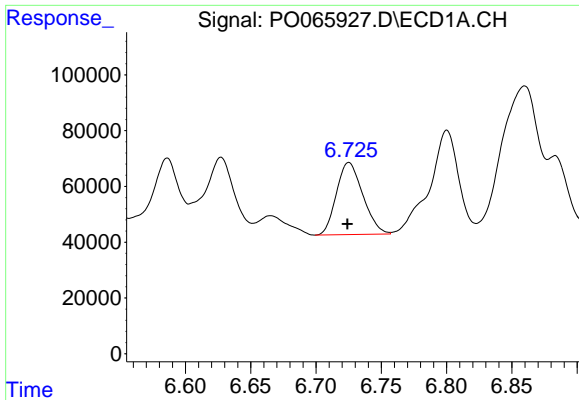
#27 AR-1254-2

R.T.: 6.365 min
 Delta R.T.: 0.003 min
 Response: 753160
 Conc: 345.74 ng/ml



#27 AR-1254-2

R.T.: 5.421 min
 Delta R.T.: 0.000 min
 Response: 145313
 Conc: 70.75 ng/ml

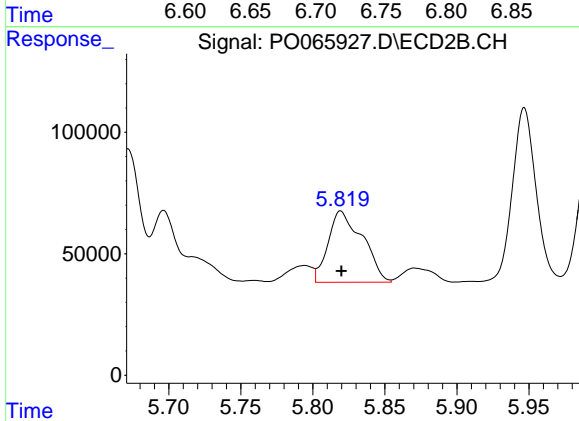


#28 AR-1254-3

R.T.: 6.725 min
 Delta R.T.: 0.001 min
 Response: 364202
 Conc: 149.77 ng/ml

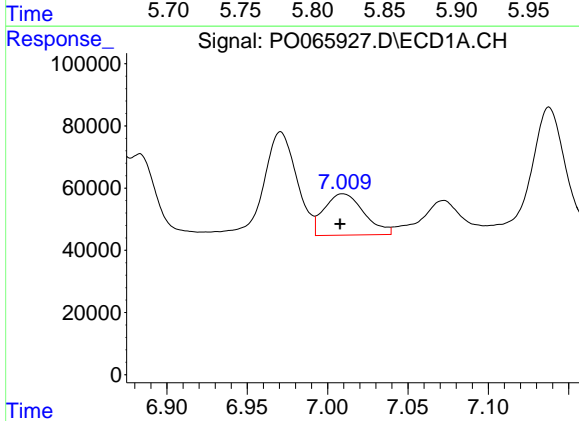
Instrument :
 ECD_O
ClientSampled :
 CTY-SB-04-0-5

Manual Integrations
APPROVED
 mohammad
 1/27/2020 5:52:36 PM



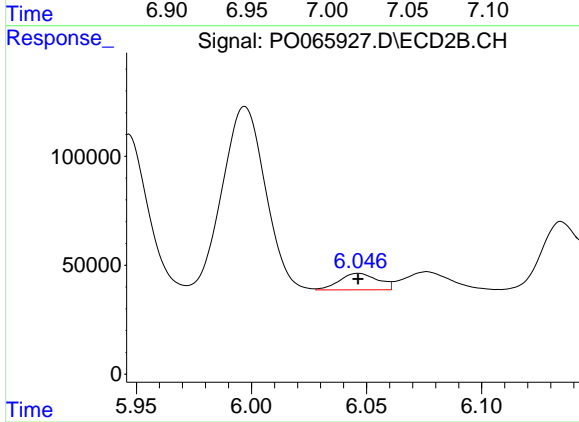
#28 AR-1254-3

R.T.: 5.819 min
 Delta R.T.: 0.000 min
 Response: 488193
 Conc: 143.96 ng/ml



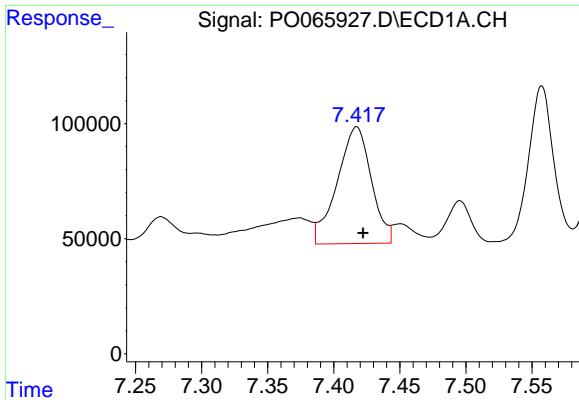
#29 AR-1254-4

R.T.: 7.009 min
 Delta R.T.: 0.002 min
 Response: 229758
 Conc: 109.63 ng/ml



#29 AR-1254-4

R.T.: 6.046 min
 Delta R.T.: 0.000 min
 Response: 88367
 Conc: 38.58 ng/ml



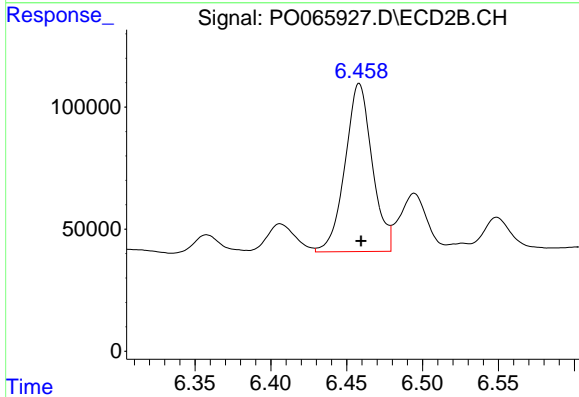
#30 AR-1254-5

R.T.: 7.417 min
Delta R.T.: -0.005 min
Response: 911248
Conc: 424.70 ng/ml

Instrument :
ECD_O
ClientSampled :
CTY-SB-04-0-5

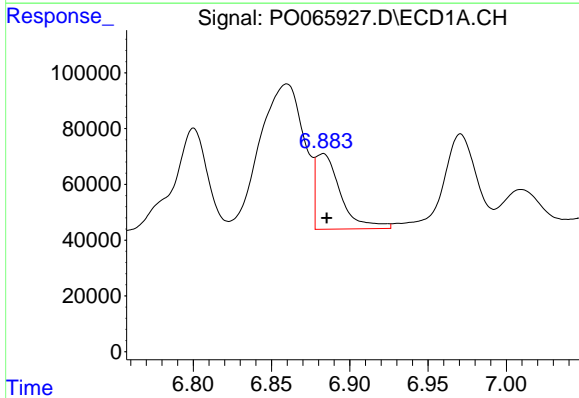
Manual Integrations
APPROVED

mohammad
1/27/2020 5:52:36 PM



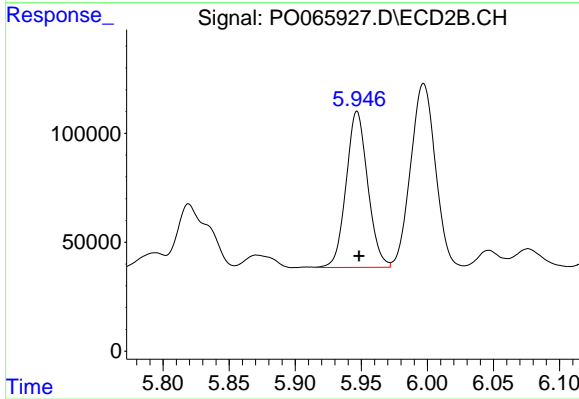
#30 AR-1254-5

R.T.: 6.458 min
Delta R.T.: -0.001 min
Response: 857479
Conc: 265.16 ng/ml



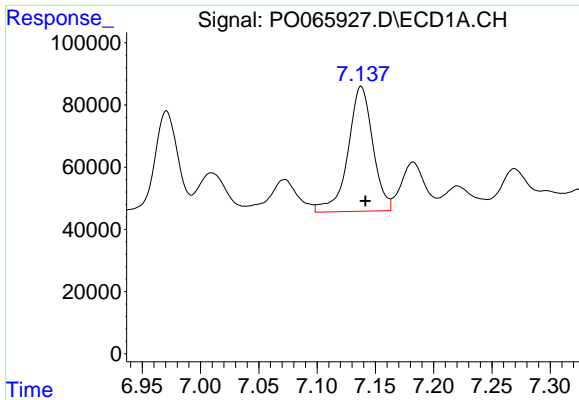
#31 AR-1260-1

R.T.: 6.883 min
Delta R.T.: -0.003 min
Response: 299066
Conc: 154.35 ng/ml



#31 AR-1260-1

R.T.: 5.947 min
Delta R.T.: -0.002 min
Response: 815283
Conc: 336.58 ng/ml

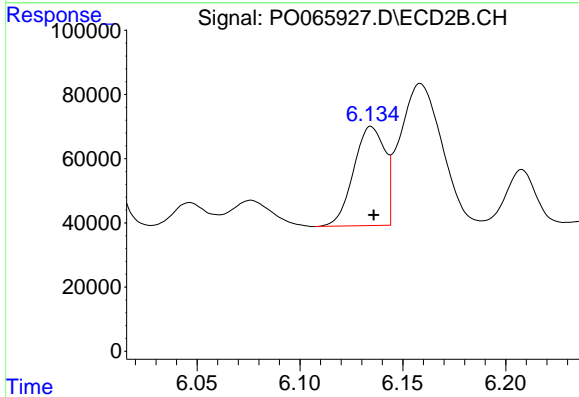


#32 AR-1260-2

R.T.: 7.138 min
 Delta R.T.: -0.004 min
 Response: 596395
 Conc: 227.43 ng/ml

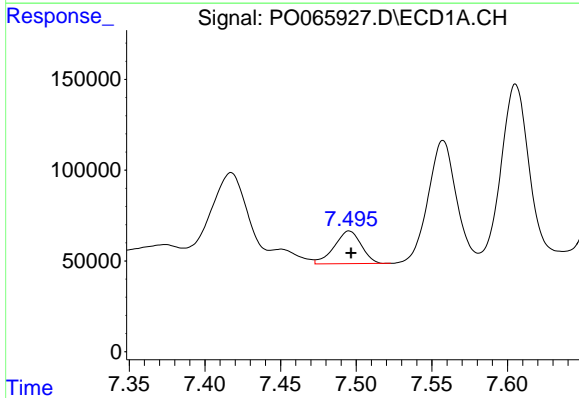
Instrument :
 ECD_O
ClientSampled :
 CTY-SB-04-0-5

Manual Integrations
APPROVED
 mohammad
 1/27/2020 5:52:36 PM



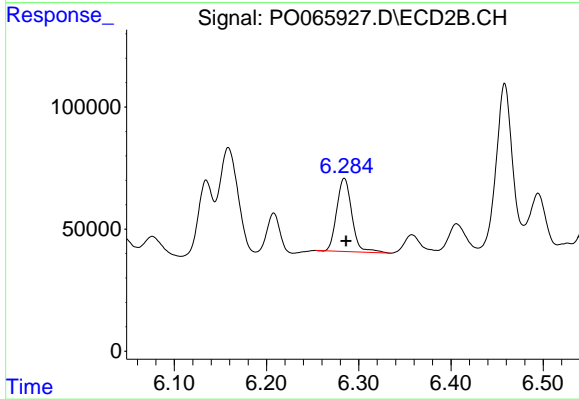
#32 AR-1260-2

R.T.: 6.135 min
 Delta R.T.: -0.001 min
 Response: 325671
 Conc: 102.78 ng/ml



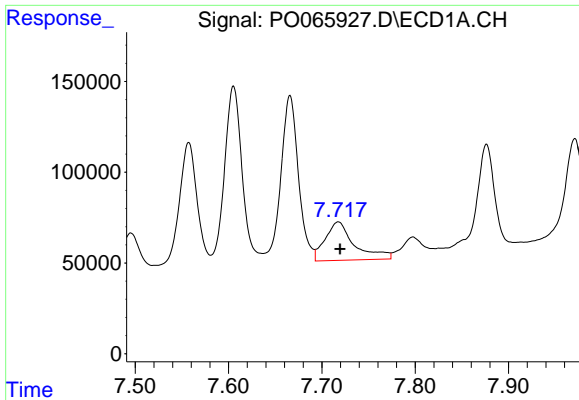
#33 AR-1260-3

R.T.: 7.495 min
 Delta R.T.: -0.001 min
 Response: 224186
 Conc: 103.16 ng/ml



#33 AR-1260-3

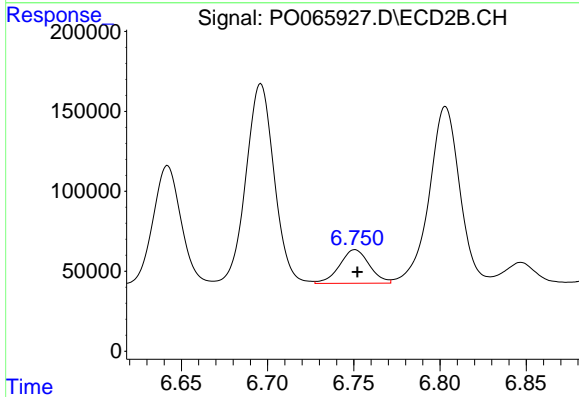
R.T.: 6.284 min
 Delta R.T.: -0.002 min
 Response: 341793
 Conc: 123.61 ng/ml



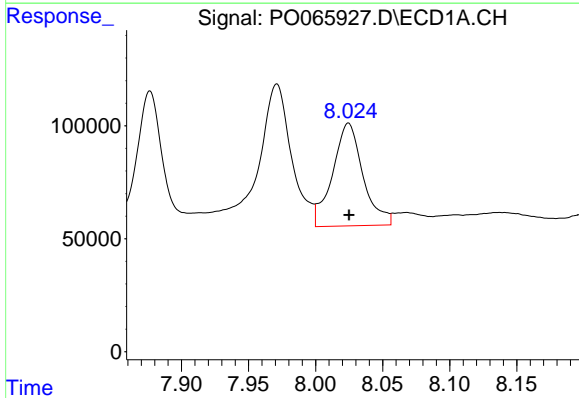
#34 AR-1260-4
 R.T.: 7.718 min
 Delta R.T.: -0.002 min
 Response: 464077
 Conc: 209.36 ng/ml

Instrument :
 ECD_O
ClientSampled :
 CTY-SB-04-0-5

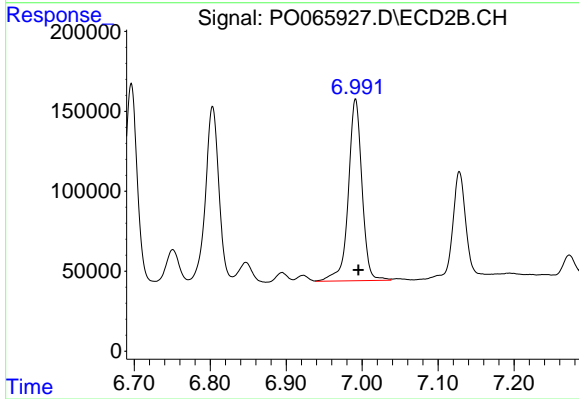
Manual Integrations
APPROVED
 mohammad
 1/27/2020 5:52:36 PM



#34 AR-1260-4
 R.T.: 6.751 min
 Delta R.T.: -0.001 min
 Response: 253072
 Conc: 102.54 ng/ml



#35 AR-1260-5
 R.T.: 8.025 min
 Delta R.T.: 0.000 min
 Response: 718364
 Conc: 148.36 ng/ml



#35 AR-1260-5
 R.T.: 6.991 min
 Delta R.T.: -0.004 min
 Response: 1422783
 Conc: 234.05 ng/ml