

Data Path : Z:\pestpcbsrv\HPCHEM1\ECD_0\Data\P0012424\
 Data File : P0101283.D
 Signal(s) : Signal #1: ECD1A.ch Signal #2: ECD2B.ch
 Acq On : 23 Jan 2024 23:40
 Operator : YP/AJ
 Sample : AR1262ICC500
 Misc :
 ALS Vial : 25 Sample Multiplier: 1

Instrument :
 ECD_0
ClientSampleId :
 AR1262ICC500

Integration File signal 1: autoint1.e
 Integration File signal 2: autoint2.e
 Quant Time: Jan 24 04:30:15 2024
 Quant Method : Z:\pestpcbsrv\HPCHEM1\ECD_0\methods\P0012424.M
 Quant Title : GC EXTRACTABLES
 QLast Update : Wed Jan 24 04:29:52 2024
 Response via : Initial Calibration
 Integrator: ChemStation

Volume Inj. : 2 µl
 Signal #1 Phase : ZB-MR1 Signal #2 Phase: ZB-MR2
 Signal #1 Info : 30Mx0.32mmx 0.50µ Signal #2 Info : 30M x 0.32mm x 0.25µm

Compound	RT#1	RT#2	Resp#1	Resp#2	ng/ml	ng/ml

System Monitoring Compounds						
1) SA Tetrachlo...	4.333	3.631	214.5E6	145.2E6	50.000	50.000
2) SA Decachlor...	10.058	8.675	133.4E6	108.2E6	50.000	50.000
Target Compounds						
36) L8 AR-1262-1	7.646	6.735	55876856	40534026	500.000	500.000
37) L8 AR-1262-2	8.268	7.034	136.0E6	74398780	500.000	500.000
38) L8 AR-1262-3	8.577	7.562	97256957	51362364	500.000	500.000
39) L8 AR-1262-4	8.665	7.627	77633075	97636568	500.000	500.000
40) L8 AR-1262-5	9.313	8.124	46965528	41899973	500.000	500.000

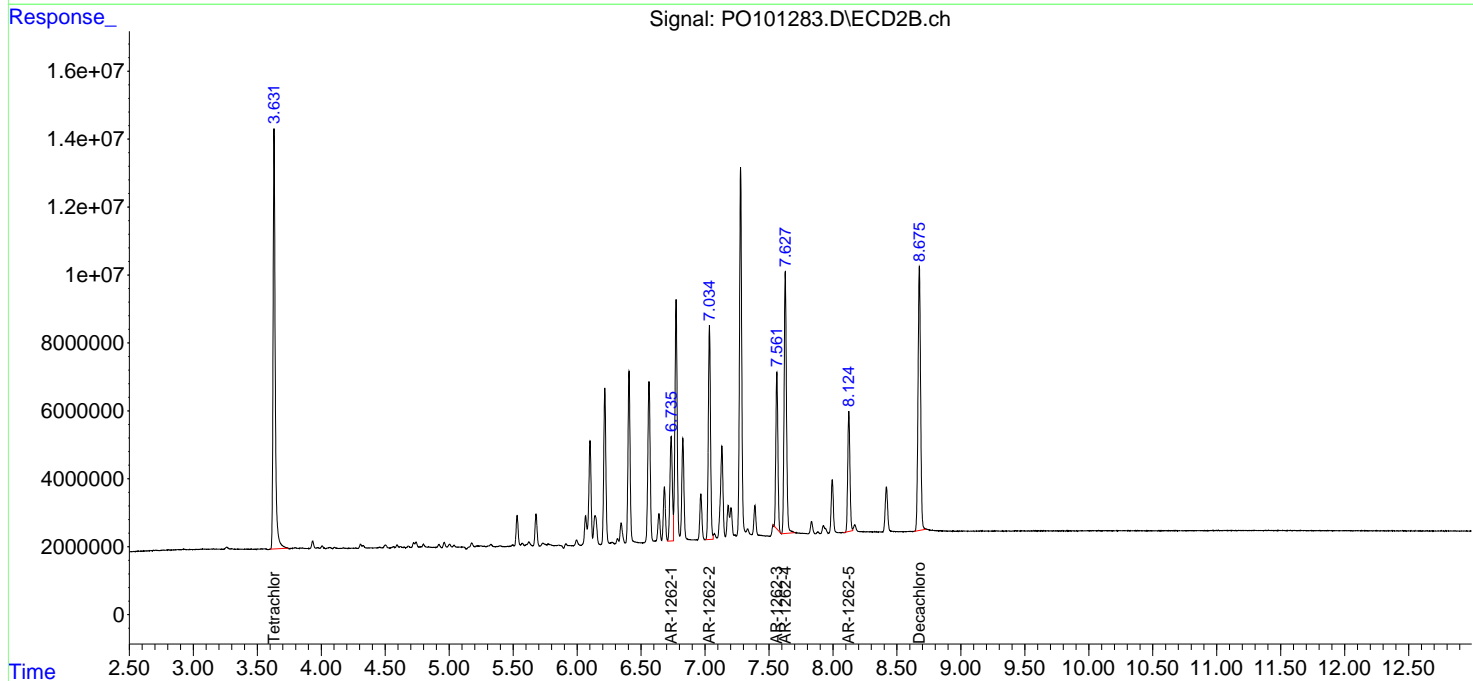
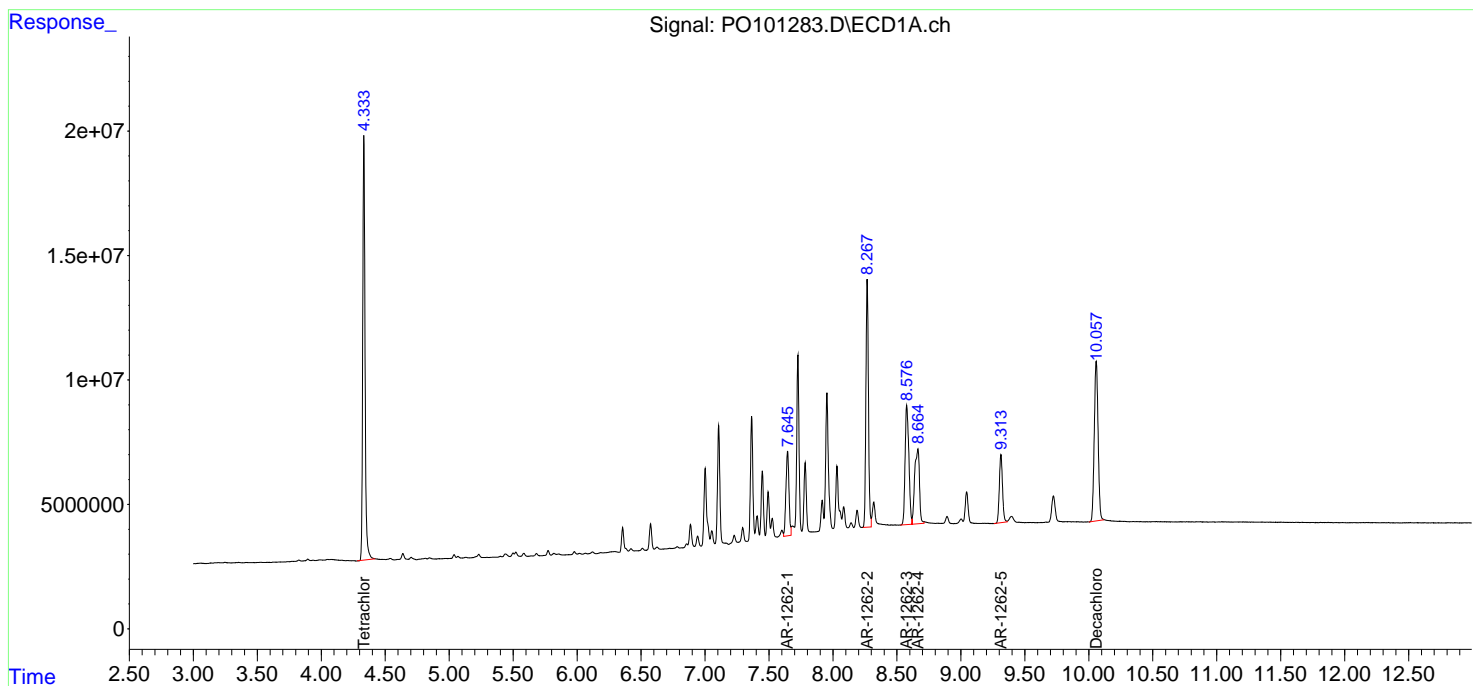
(f)=RT Delta > 1/2 Window (#)=Amounts differ by > 25% (m)=manual int.

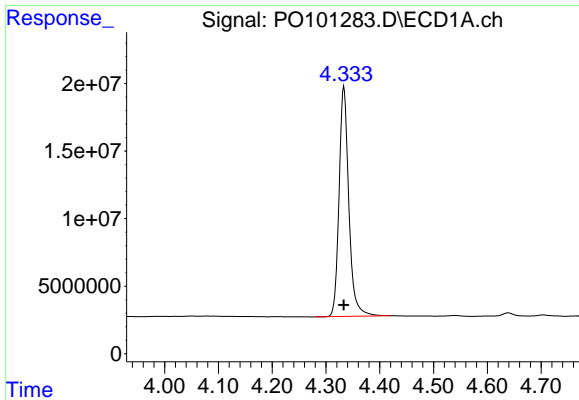
Data Path : Z:\pestpcbsrv\HPCHEM1\ECD_O\Data\PO012424\
 Data File : PO101283.D
 Signal(s) : Signal #1: ECD1A.ch Signal #2: ECD2B.ch
 Acq On : 23 Jan 2024 23:40
 Operator : YP/AJ
 Sample : AR1262ICC500
 Misc :
 ALS Vial : 25 Sample Multiplier: 1

Instrument :
 ECD_O
 ClientSampleId :
 AR1262ICC500

Integration File signal 1: autoint1.e
 Integration File signal 2: autoint2.e
 Quant Time: Jan 24 04:30:15 2024
 Quant Method : Z:\pestpcbsrv\HPCHEM1\ECD_O\methods\PO012424.M
 Quant Title : GC EXTRACTABLES
 QLast Update : Wed Jan 24 04:29:52 2024
 Response via : Initial Calibration
 Integrator: ChemStation

Volume Inj. : 2 µl
 Signal #1 Phase : ZB-MR1 Signal #2 Phase: ZB-MR2
 Signal #1 Info : 30Mx0.32mmx 0.50µ Signal #2 Info : 30M x 0.32mm x 0.25µm

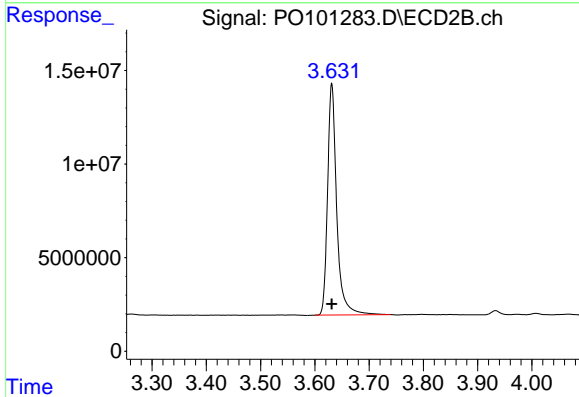




#1 Tetrachloro-m-xylene

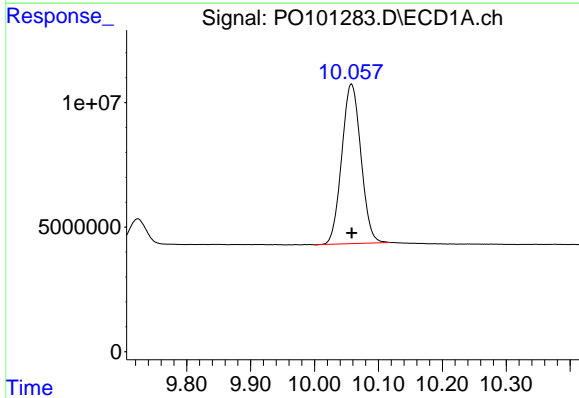
R.T.: 4.333 min
 Delta R.T.: 0.000 min
 Response: 214494559
 Conc: 50.00 ng/ml

Instrument :
 ECD_O
 ClientSampleId :
 AR1262ICC500



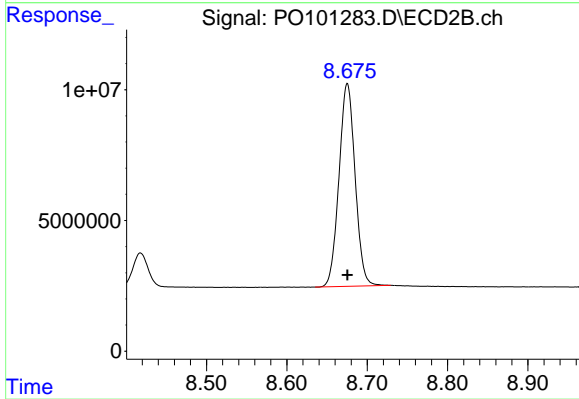
#1 Tetrachloro-m-xylene

R.T.: 3.631 min
 Delta R.T.: 0.000 min
 Response: 145174747
 Conc: 50.00 ng/ml



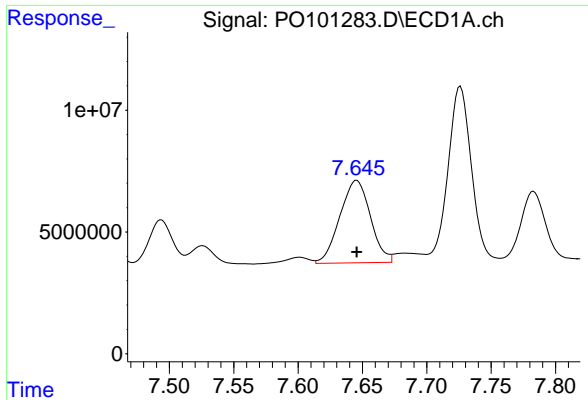
#2 Decachlorobiphenyl

R.T.: 10.058 min
 Delta R.T.: 0.000 min
 Response: 133439601
 Conc: 50.00 ng/ml



#2 Decachlorobiphenyl

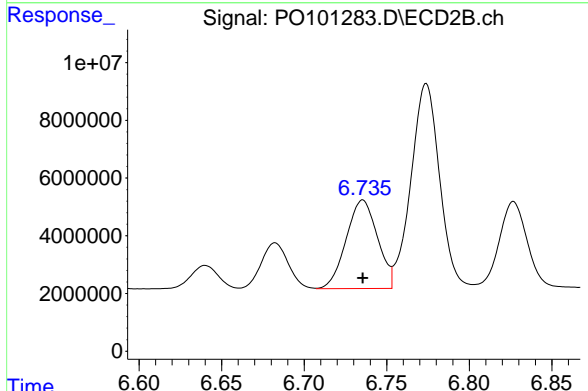
R.T.: 8.675 min
 Delta R.T.: 0.000 min
 Response: 108161097
 Conc: 50.00 ng/ml



#36 AR-1262-1

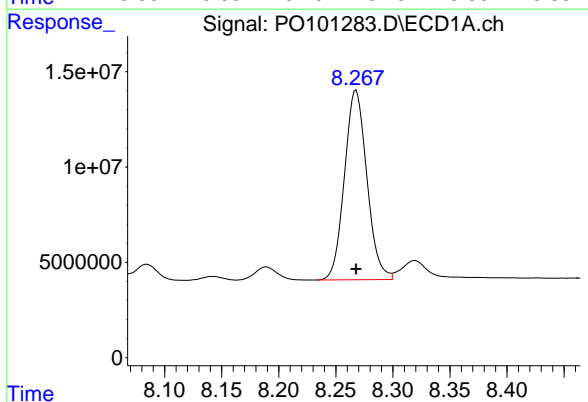
R.T.: 7.646 min
 Delta R.T.: 0.000 min
 Response: 55876856
 Conc: 500.00 ng/ml

Instrument :
 ECD_O
 ClientSampleId :
 AR1262ICC500



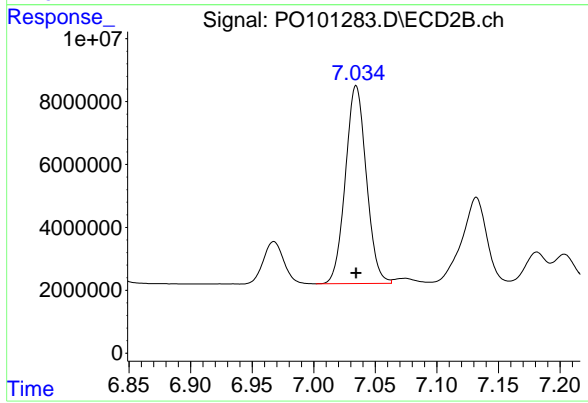
#36 AR-1262-1

R.T.: 6.735 min
 Delta R.T.: 0.000 min
 Response: 40534026
 Conc: 500.00 ng/ml



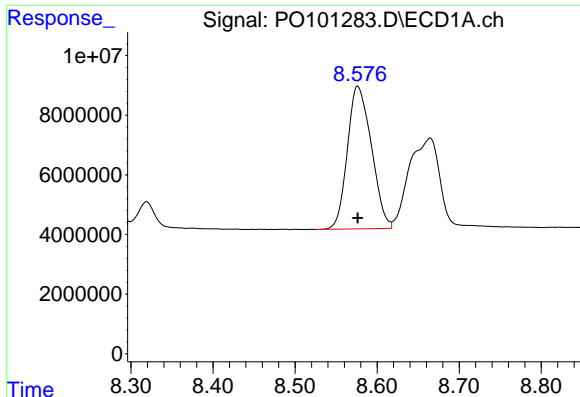
#37 AR-1262-2

R.T.: 8.268 min
 Delta R.T.: 0.000 min
 Response: 136025118
 Conc: 500.00 ng/ml



#37 AR-1262-2

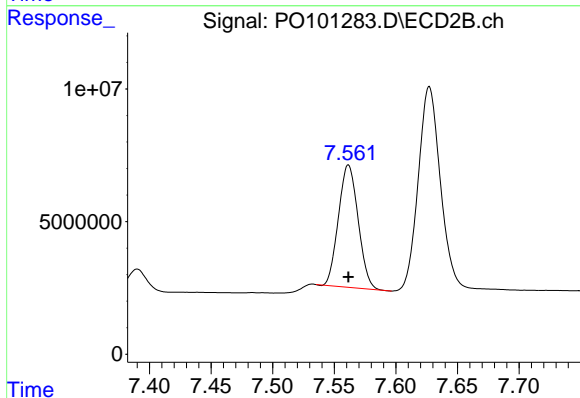
R.T.: 7.034 min
 Delta R.T.: 0.000 min
 Response: 74398780
 Conc: 500.00 ng/ml



#38 AR-1262-3

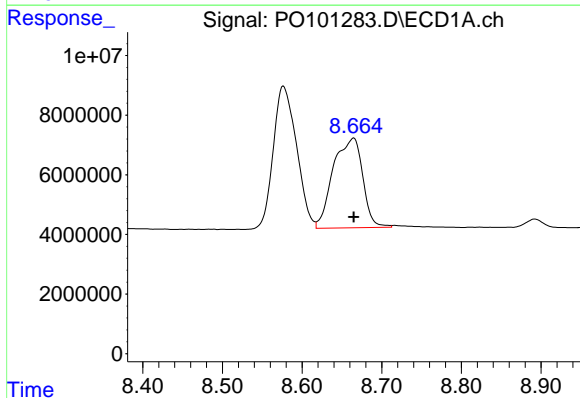
R.T.: 8.577 min
 Delta R.T.: 0.000 min
 Response: 97256957
 Conc: 500.00 ng/ml

Instrument :
 ECD_O
 ClientSampleId :
 AR1262ICC500



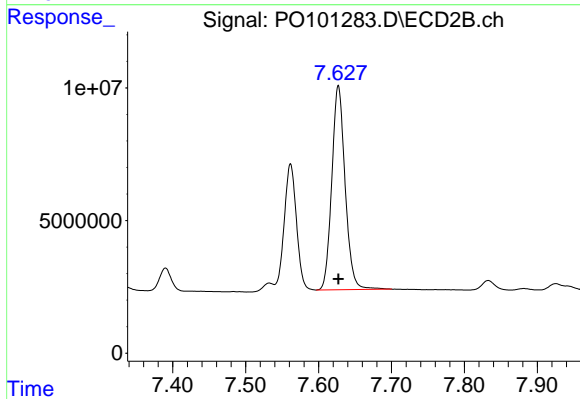
#38 AR-1262-3

R.T.: 7.562 min
 Delta R.T.: 0.000 min
 Response: 51362364
 Conc: 500.00 ng/ml



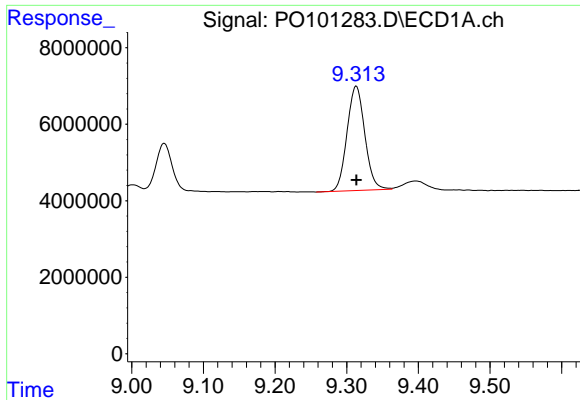
#39 AR-1262-4

R.T.: 8.665 min
 Delta R.T.: 0.000 min
 Response: 77633075
 Conc: 500.00 ng/ml



#39 AR-1262-4

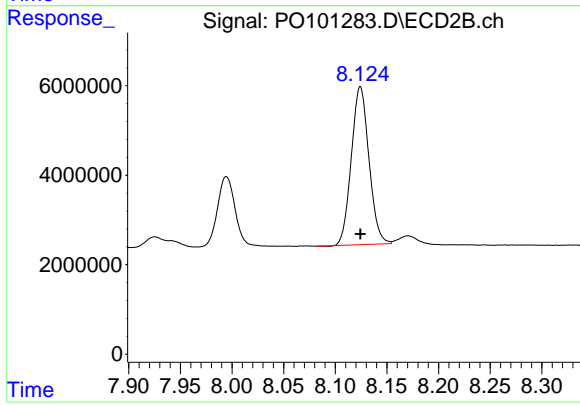
R.T.: 7.627 min
 Delta R.T.: 0.000 min
 Response: 97636568
 Conc: 500.00 ng/ml



#40 AR-1262-5

R.T.: 9.313 min
Delta R.T.: 0.000 min
Response: 46965528
Conc: 500.00 ng/ml

Instrument :
ECD_O
ClientSampleId :
AR1262ICC500



#40 AR-1262-5

R.T.: 8.124 min
Delta R.T.: 0.000 min
Response: 41899973
Conc: 500.00 ng/ml