

Data Path : Z:\pestpcbsrv\HPCHEM1\ECD_0\Data\P0012424\
 Data File : P0101288.D
 Signal(s) : Signal #1: ECD1A.ch Signal #2: ECD2B.ch
 Acq On : 24 Jan 2024 01:03
 Operator : YP/AJ
 Sample : AR1268ICC250
 Misc :
 ALS Vial : 30 Sample Multiplier: 1

Instrument :
 ECD_0
 ClientSampleId :
 AR1268ICC050

Integration File signal 1: autoint1.e
 Integration File signal 2: autoint2.e
 Quant Time: Jan 24 04:34:40 2024
 Quant Method : Z:\pestpcbsrv\HPCHEM1\ECD_0\methods\P0012424.M
 Quant Title : GC EXTRACTABLES
 QLast Update : Wed Jan 24 04:33:03 2024
 Response via : Initial Calibration
 Integrator: ChemStation

Volume Inj. : 2 µl
 Signal #1 Phase : ZB-MR1 Signal #2 Phase: ZB-MR2
 Signal #1 Info : 30Mx0.32mmx 0.50µ Signal #2 Info : 30M x 0.32mm x 0.25µm

Compound	RT#1	RT#2	Resp#1	Resp#2	ng/ml	ng/ml

System Monitoring Compounds						
1) SA Tetrachlo...	4.333	3.631	18167072	12130982	4.613	4.545
2) SA Decachlor...	10.059	8.676	18740062	16509239	4.496	4.908
Target Compounds						
41) L9 AR-1268-1	8.574	7.562	15286998	13899112	47.135	49.111
42) L9 AR-1268-2	8.667	7.627	13711082	12540948	46.128	48.268
43) L9 AR-1268-3	8.892	7.833	11802649	11464219	44.203	48.529
44) L9 AR-1268-4	9.313	8.125	3998710	4294995	41.378	49.560
45) L9 AR-1268-5	9.724	8.419	36592352	31313928	44.171	46.445

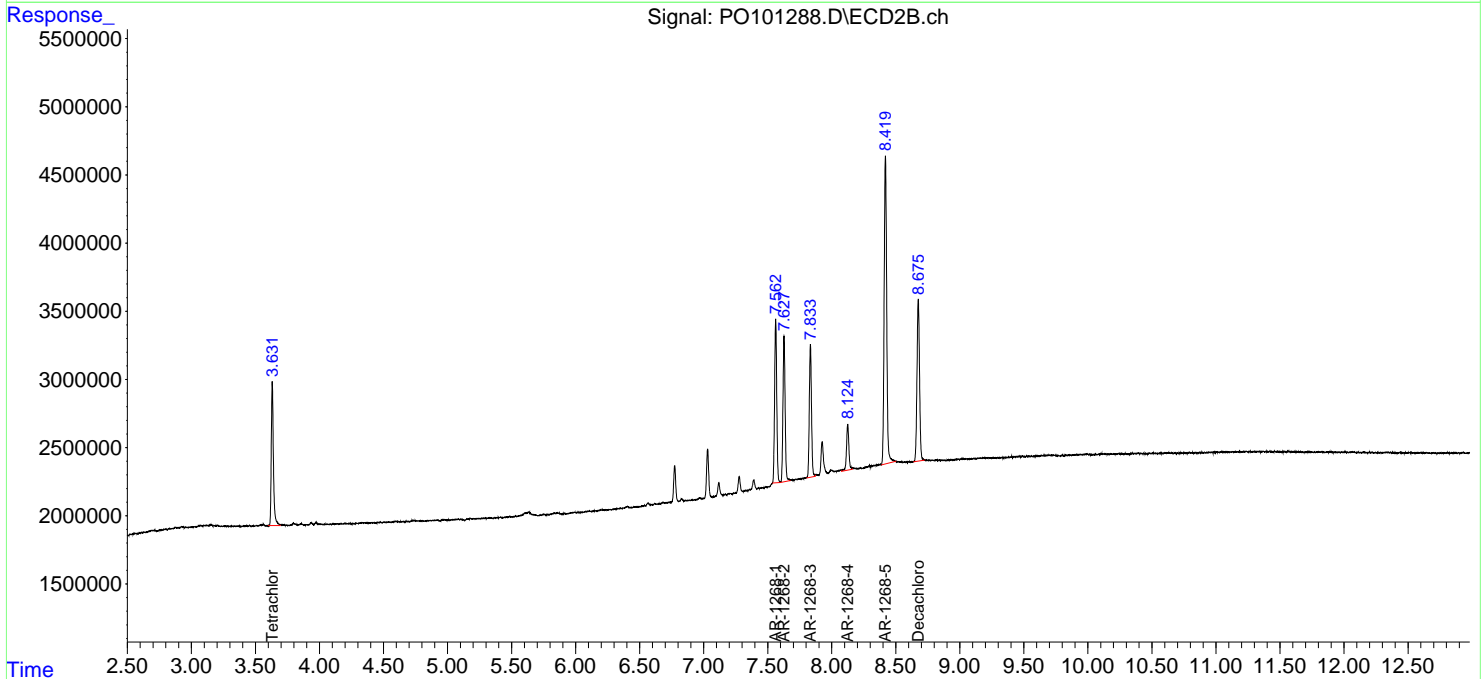
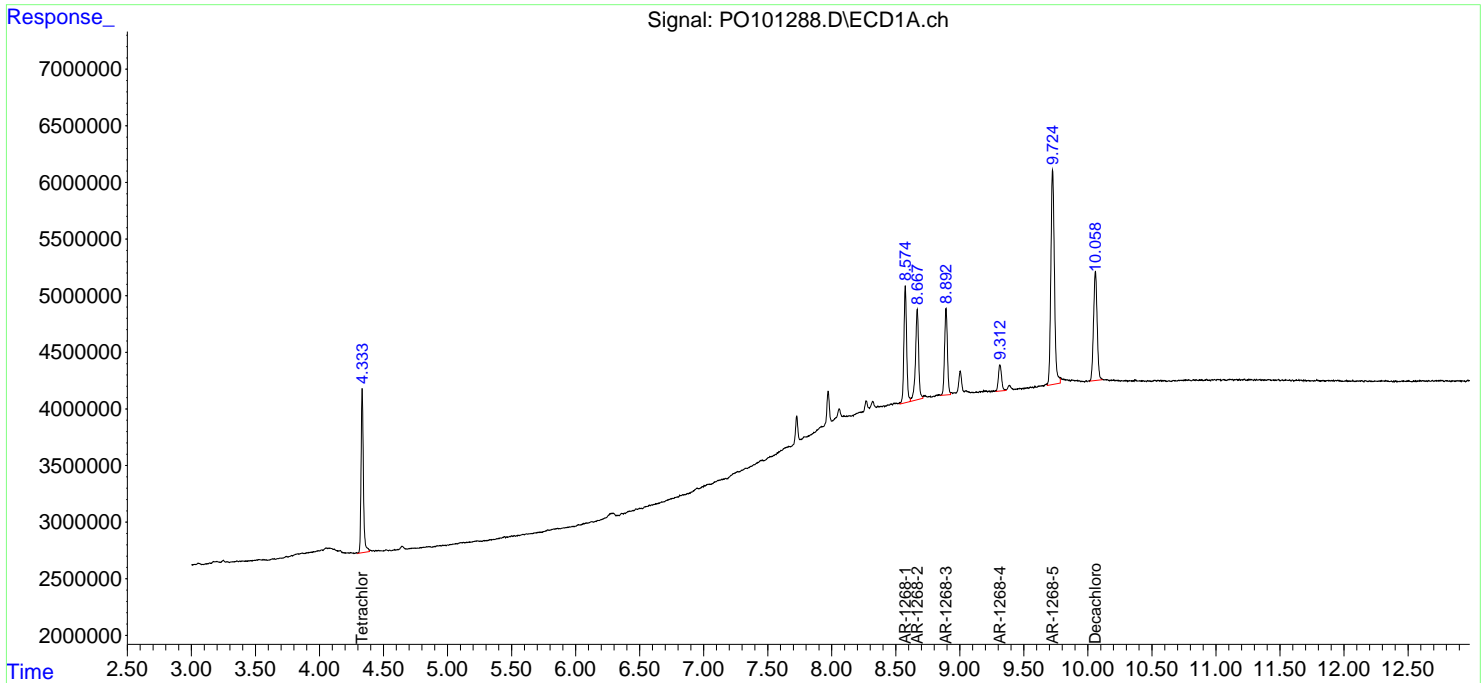
(f)=RT Delta > 1/2 Window (#)=Amounts differ by > 25% (m)=manual int.

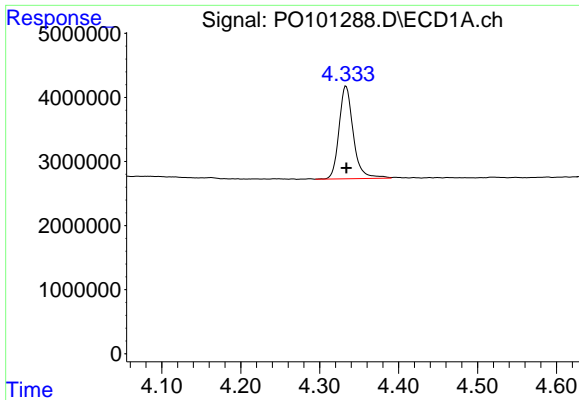
Data Path : Z:\pestpcbsrv\HPCHEM1\ECD_O\Data\PO012424\
 Data File : PO101288.D
 Signal(s) : Signal #1: ECD1A.ch Signal #2: ECD2B.ch
 Acq On : 24 Jan 2024 01:03
 Operator : YP/AJ
 Sample : AR1268ICC250
 Misc :
 ALS Vial : 30 Sample Multiplier: 1

Instrument :
 ECD_O
 ClientSampleId :
 AR1268ICC050

Integration File signal 1: autoint1.e
 Integration File signal 2: autoint2.e
 Quant Time: Jan 24 04:34:40 2024
 Quant Method : Z:\pestpcbsrv\HPCHEM1\ECD_O\methods\PO012424.M
 Quant Title : GC EXTRACTABLES
 QLast Update : Wed Jan 24 04:33:03 2024
 Response via : Initial Calibration
 Integrator: ChemStation

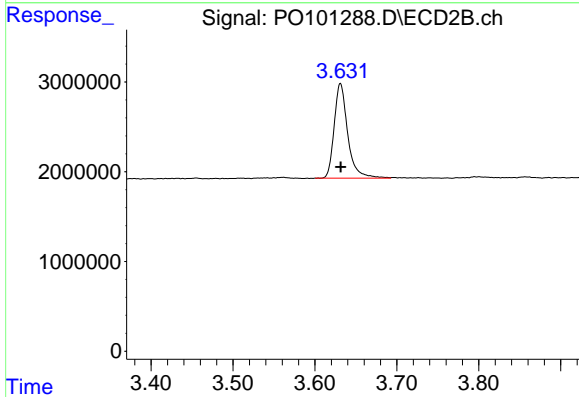
Volume Inj. : 2 µl
 Signal #1 Phase : ZB-MR1 Signal #2 Phase: ZB-MR2
 Signal #1 Info : 30Mx0.32mmx 0.50µm Signal #2 Info : 30M x 0.32mm x 0.25µm



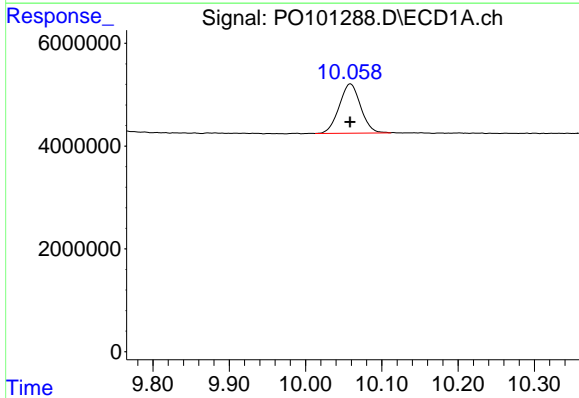


#1 Tetrachloro-m-xylene
 R.T.: 4.333 min
 Delta R.T.: 0.000 min
 Response: 18167072
 Conc: 4.61 ng/ml

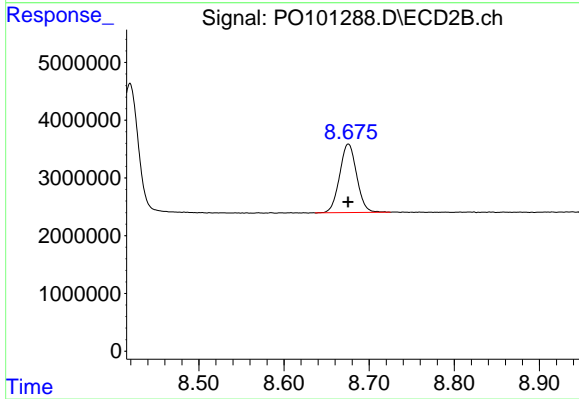
Instrument :
 ECD_O
 ClientSampleId :
 AR1268ICCO50



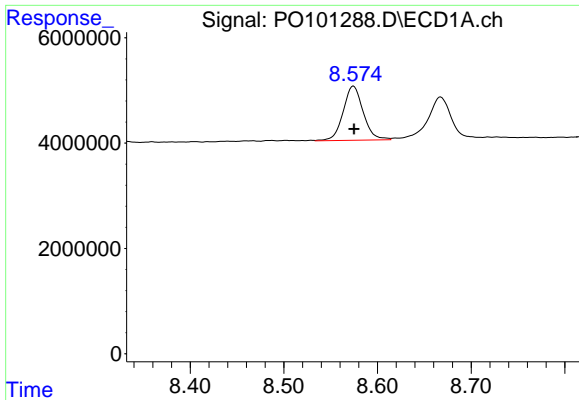
#1 Tetrachloro-m-xylene
 R.T.: 3.631 min
 Delta R.T.: 0.000 min
 Response: 12130982
 Conc: 4.54 ng/ml



#2 Decachlorobiphenyl
 R.T.: 10.059 min
 Delta R.T.: 0.000 min
 Response: 18740062
 Conc: 4.50 ng/ml



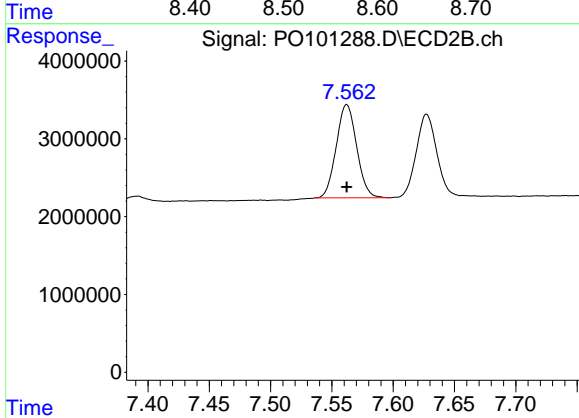
#2 Decachlorobiphenyl
 R.T.: 8.676 min
 Delta R.T.: 0.000 min
 Response: 16509239
 Conc: 4.91 ng/ml



#41 AR-1268-1

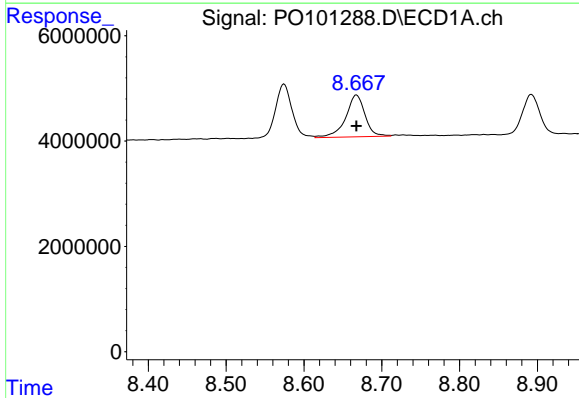
R.T.: 8.574 min
 Delta R.T.: 0.000 min
 Response: 15286998
 Conc: 47.14 ng/ml

Instrument :
 ECD_O
 ClientSampleId :
 AR1268ICC050



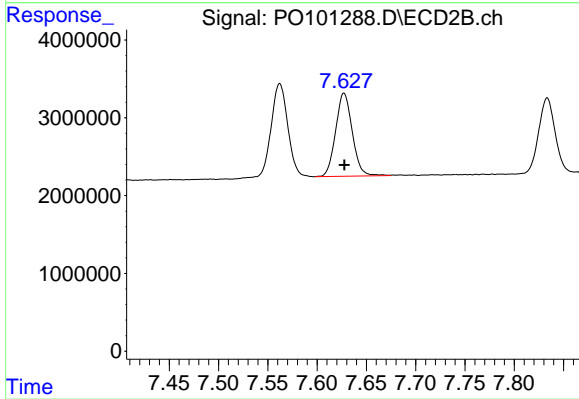
#41 AR-1268-1

R.T.: 7.562 min
 Delta R.T.: 0.000 min
 Response: 13899112
 Conc: 49.11 ng/ml



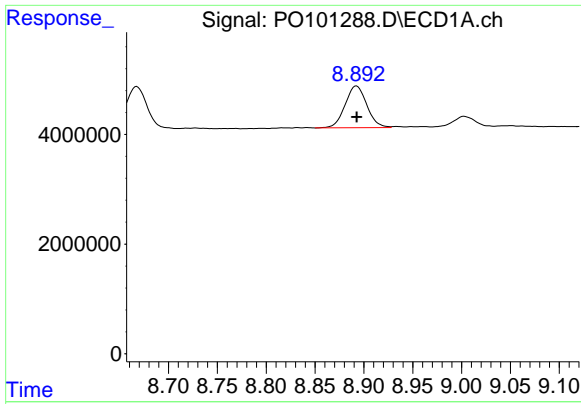
#42 AR-1268-2

R.T.: 8.667 min
 Delta R.T.: 0.000 min
 Response: 13711082
 Conc: 46.13 ng/ml



#42 AR-1268-2

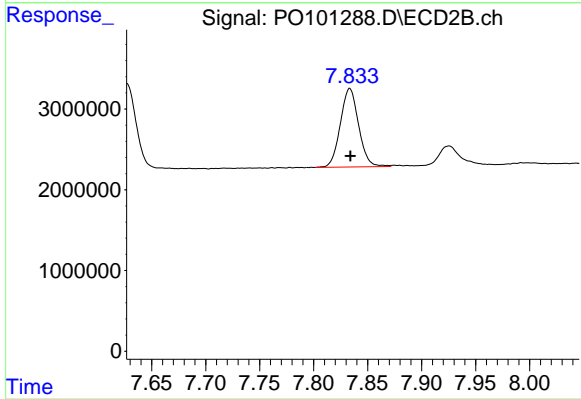
R.T.: 7.627 min
 Delta R.T.: 0.000 min
 Response: 12540948
 Conc: 48.27 ng/ml



#43 AR-1268-3

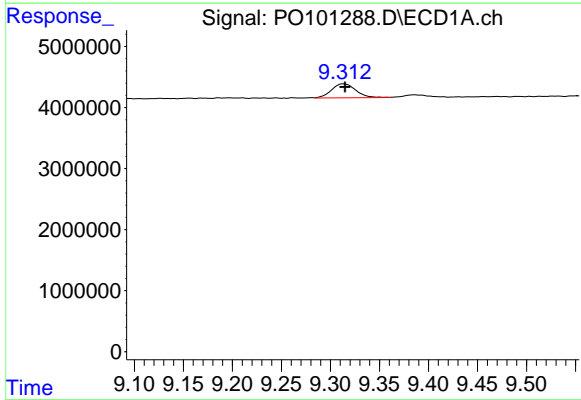
R.T.: 8.892 min
 Delta R.T.: 0.000 min
 Response: 11802649
 Conc: 44.20 ng/ml

Instrument :
 ECD_O
 ClientSampleId :
 AR1268ICC050



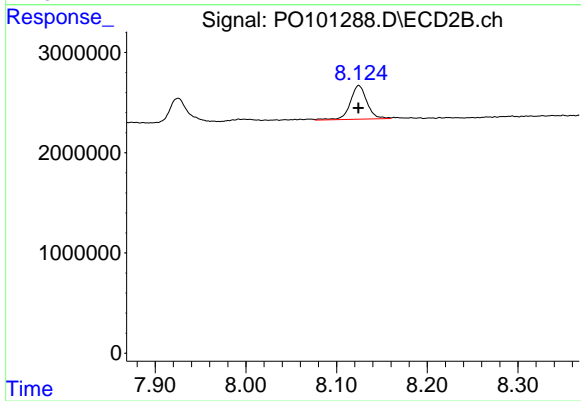
#43 AR-1268-3

R.T.: 7.833 min
 Delta R.T.: 0.000 min
 Response: 11464219
 Conc: 48.53 ng/ml



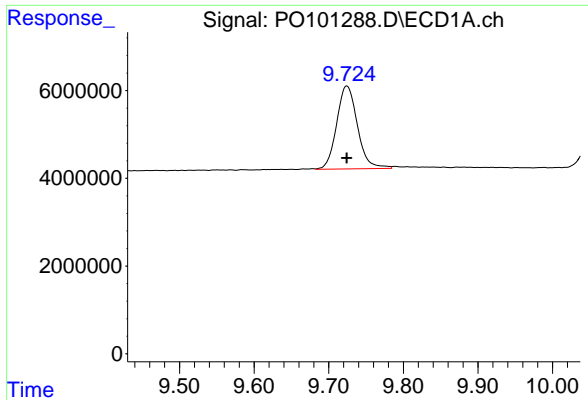
#44 AR-1268-4

R.T.: 9.313 min
 Delta R.T.: -0.002 min
 Response: 3998710
 Conc: 41.38 ng/ml



#44 AR-1268-4

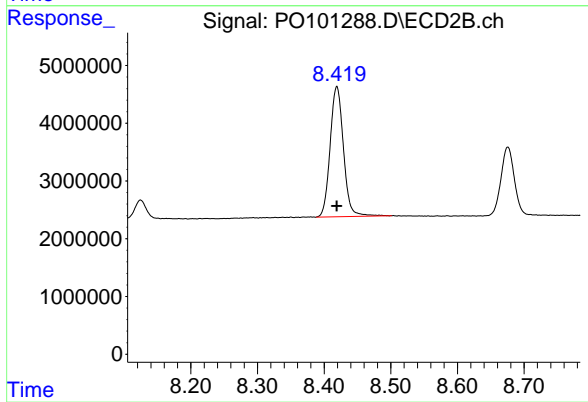
R.T.: 8.125 min
 Delta R.T.: 0.000 min
 Response: 4294995
 Conc: 49.56 ng/ml



#45 AR-1268-5

R.T.: 9.724 min
Delta R.T.: 0.000 min
Response: 36592352
Conc: 44.17 ng/ml

Instrument :
ECD_O
ClientSampleId :
AR1268ICC050



#45 AR-1268-5

R.T.: 8.419 min
Delta R.T.: 0.000 min
Response: 31313928
Conc: 46.45 ng/ml