

Data Path : Z:\pestpcbsrv\HPCHEM1\ECD_0\Data\P0012524\
 Data File : P0101297.D
 Signal(s) : Signal #1: ECD1A.ch Signal #2: ECD2B.ch
 Acq On : 24 Jan 2024 07:29
 Operator : YP/AJ
 Sample : AR1248ICC500
 Misc :
 ALS Vial : 17 Sample Multiplier: 1

Instrument :
 ECD_0
 ClientSampleId :
 AR1248CCC500

Integration File signal 1: autoint1.e
 Integration File signal 2: autoint2.e
 Quant Time: Jan 24 11:40:46 2024
 Quant Method : Z:\pestpcbsrv\HPCHEM1\ECD_0\methods\P0012424.M
 Quant Title : GC EXTRACTABLES
 QLast Update : Wed Jan 24 04:51:39 2024
 Response via : Initial Calibration
 Integrator: ChemStation

Volume Inj. : 2 µl
 Signal #1 Phase : ZB-MR1 Signal #2 Phase: ZB-MR2
 Signal #1 Info : 30Mx0.32mmx 0.50µ Signal #2 Info : 30M x 0.32mm x 0.25µm

Compound	RT#1	RT#2	Resp#1	Resp#2	ng/ml	ng/ml
System Monitoring Compounds						
1) SA Tetrachlo...	4.333	3.631	193.2E6	129.5E6	50.328	50.107
2) SA Decachlor...	10.056	8.674	120.1E6	97263158	51.521	51.326
Target Compounds						
3) L1 AR-1016-1	5.500	4.723	31565095	23642145	322.905	319.803
4) L1 AR-1016-2	5.523	4.742	37517087	22902369	272.741	232.363
5) L1 AR-1016-3	5.584	4.921	19319230	16308476	215.355	297.267 #
6) L1 AR-1016-4	5.681	4.961	21818550	36510179	305.274	718.445 #
7) L1 AR-1016-5	5.978	5.177	55300942	44188088	699.608	676.840
8) L2 AR-1221-1	4.540	3.845	1024117	424400	24.460	14.818 #
9) L2 AR-1221-2	4.637	3.932	3231028	2487345	101.837	111.215
10) L2 AR-1221-3	4.703	4.007	3397509	2301866	38.370	36.214
11) L3 AR-1232-1	4.703	4.007	3397509	2301866	44.936	42.190
12) L3 AR-1232-2	5.232	4.742	17820552	22902369	392.155	476.287
13) L3 AR-1232-3	5.523	4.921	37517087	16308476	560.471	621.972
14) L3 AR-1232-4	5.681	5.003	21818550	37863957	609.488	1359.687 #
15) L3 AR-1232-5	5.774	5.177	53516987	44188088	1568.647	1445.028
16) L4 AR-1242-1	5.500	4.723	31565095	23642145	407.949	401.837
17) L4 AR-1242-2	5.523	4.742	37517087	22902369	346.432	295.345
18) L4 AR-1242-3	5.584	4.921	19319230	16308476	271.795	376.213 #
19) L4 AR-1242-4	5.681	5.003	21818550	37863957	383.076	760.706 #
20) L4 AR-1242-5	6.421	5.531	47954982	53797946	893.618	1015.574
21) L5 AR-1248-1	5.500	4.723	31565095	23642145	544.583	528.374
22) L5 AR-1248-2	5.774	4.961	53516987	36510179	531.406	519.258
23) L5 AR-1248-3	5.978	5.003	55300942	37863957	533.725	520.570
24) L5 AR-1248-4	6.382	5.177	49139506	44188088	541.122	519.792
25) L5 AR-1248-5	6.421	5.572	47954982	35506513	537.635	518.566
26) L6 AR-1254-1	6.355	5.531	40955061	53797946	344.219	432.419 #
27) L6 AR-1254-2	6.578	5.680	51240314	18482408	300.847	165.114 #
28) L6 AR-1254-3	6.942	6.086	28833775	26210990	175.577	157.524
29) L6 AR-1254-4	7.228	6.316	16298919	16022590	163.067	187.845
30) L6 AR-1254-5	7.650	6.736	4611268	5580493	39.235	41.185
31) L7 AR-1260-1	7.107	6.232	3850955	12716271	27.003	103.054 #
32) L7 AR-1260-2	7.364	6.405	4475672	2650774	30.554	19.387 #
33) L7 AR-1260-3	7.721	6.559	516441	3215948	4.423	25.069 #
34) L7 AR-1260-4	7.940	7.035	2187761	344772	18.583	3.336 #
35) L7 AR-1260-5	8.266	7.277	1445018	872067	6.590	4.154 #
36) L8 AR-1262-1	7.650	6.736	4611268	5580493	41.263	68.837 #
37) L8 AR-1262-2	8.266	7.035	1445018	344772	5.312	2.317 #
38) L8 AR-1262-3	8.590	7.563	1272181	206682	6.540	2.012 #
39) L8 AR-1262-4	8.673	7.625	203587	731326	1.311	3.745 #
40) L8 AR-1262-5	9.320	8.123	74787	937713	0.796	11.190 #
41) L9 AR-1268-1	8.590	7.563	1272181	206682	4.012	0.739 #

Data Path : Z:\pestpcbsrv\HPCHEM1\ECD_0\Data\P0012524\
 Data File : P0101297.D
 Signal(s) : Signal #1: ECD1A.ch Signal #2: ECD2B.ch
 Acq On : 24 Jan 2024 07:29
 Operator : YP/AJ
 Sample : AR1248ICC500
 Misc :
 ALS Vial : 17 Sample Multiplier: 1

Instrument :
 ECD_0
 ClientSampleId :
 AR1248CCC500

Integration File signal 1: autoint1.e
 Integration File signal 2: autoint2.e
 Quant Time: Jan 24 11:40:46 2024
 Quant Method : Z:\pestpcbsrv\HPCHEM1\ECD_0\methods\P0012424.M
 Quant Title : GC EXTRACTABLES
 QLast Update : Wed Jan 24 04:51:39 2024
 Response via : Initial Calibration
 Integrator: ChemStation

Volume Inj. : 2 µl
 Signal #1 Phase : ZB-MR1 Signal #2 Phase: ZB-MR2
 Signal #1 Info : 30Mx0.32mmx 0.50µ Signal #2 Info : 30M x 0.32mm x 0.25µm

	Compound	RT#1	RT#2	Resp#1	Resp#2	ng/ml	ng/ml
42)	L9 AR-1268-2	8.673	7.625	203587	731326	0.705	2.860 #
43)	L9 AR-1268-3	8.894	7.833	184866	432627	0.717	1.860 #
44)	L9 AR-1268-4	9.320	8.123	74787	937713	0.814	11.035 #
45)	L9 AR-1268-5	9.728	8.418	904725	823002	1.129	1.251

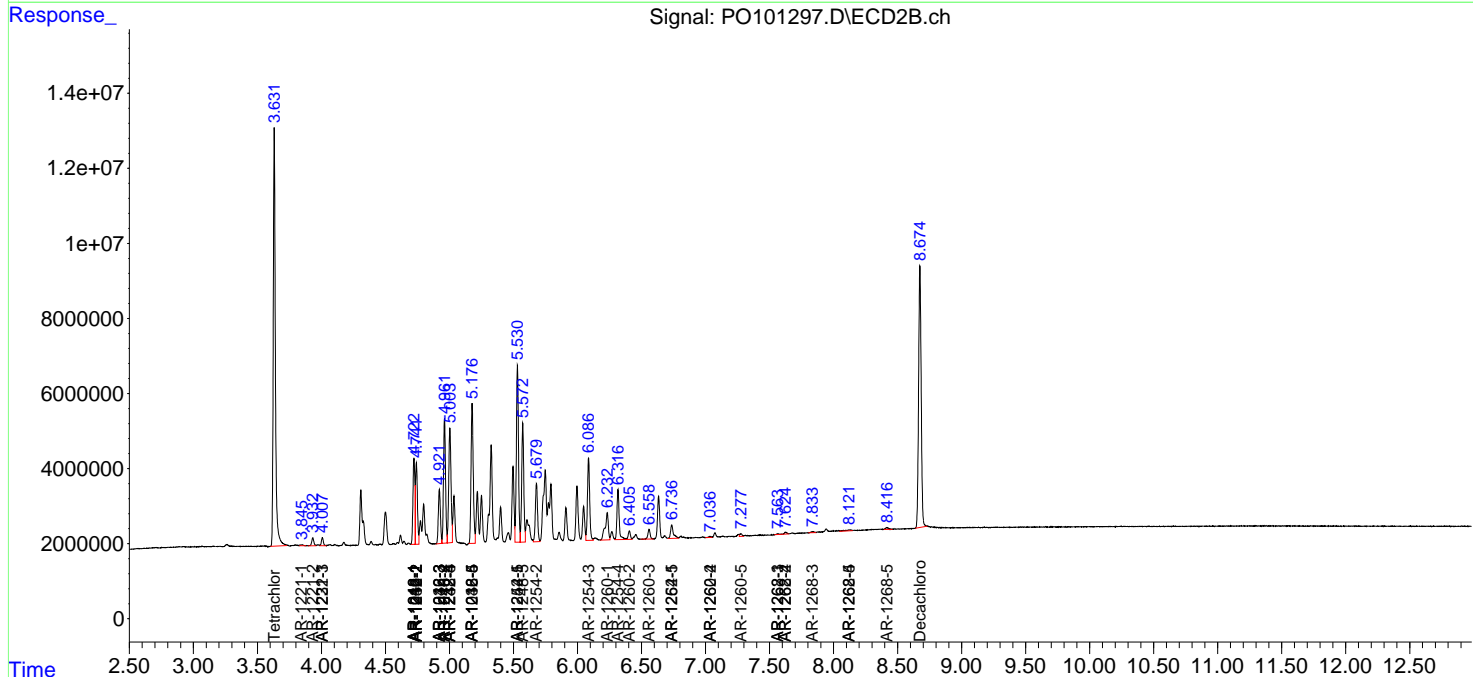
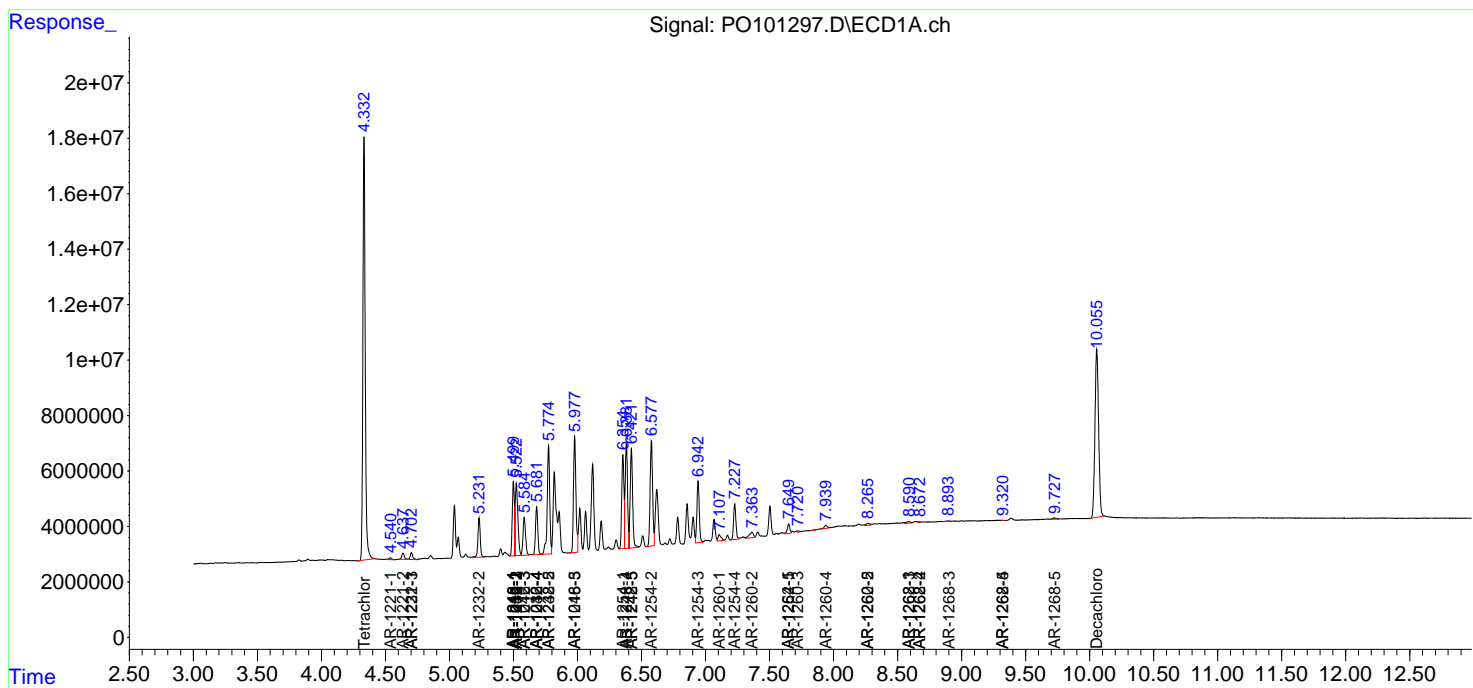
(f)=RT Delta > 1/2 Window (#)=Amounts differ by > 25% (m)=manual int.

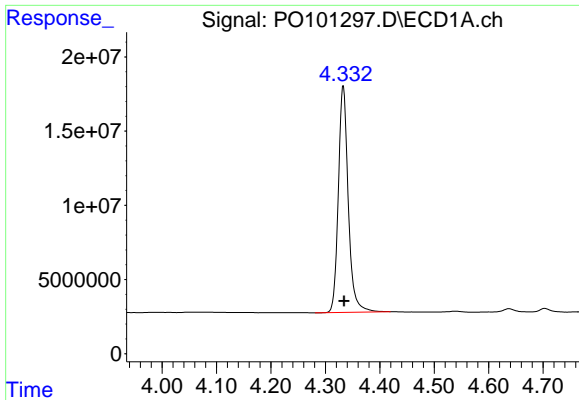
Data Path : Z:\pestpcbsrv\HPCHEM1\ECD_O\Data\PO012524\
 Data File : PO101297.D
 Signal(s) : Signal #1: ECD1A.ch Signal #2: ECD2B.ch
 Acq On : 24 Jan 2024 07:29
 Operator : YP/AJ
 Sample : AR1248ICC500
 Misc :
 ALS Vial : 17 Sample Multiplier: 1

Instrument :
 ECD_O
 ClientSampleId :
 AR1248CCC500

Integration File signal 1: autoint1.e
 Integration File signal 2: autoint2.e
 Quant Time: Jan 24 11:40:46 2024
 Quant Method : Z:\pestpcbsrv\HPCHEM1\ECD_O\methods\PO012424.M
 Quant Title : GC EXTRACTABLES
 QLast Update : Wed Jan 24 04:51:39 2024
 Response via : Initial Calibration
 Integrator: ChemStation

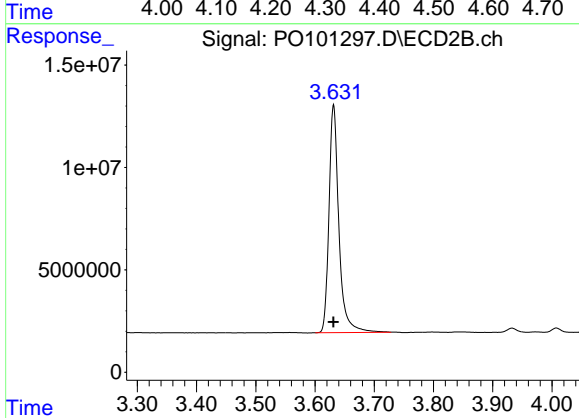
Volume Inj. : 2 µl
 Signal #1 Phase : ZB-MR1 Signal #2 Phase: ZB-MR2
 Signal #1 Info : 30Mx0.32mmx 0.50µ Signal #2 Info : 30M x 0.32mm x 0.25µm



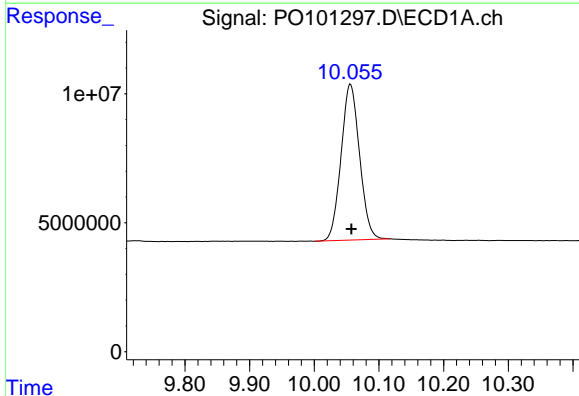


#1 Tetrachloro-m-xylene
R.T.: 4.333 min
Delta R.T.: -0.001 min
Response: 193187191
Conc: 50.33 ng/ml

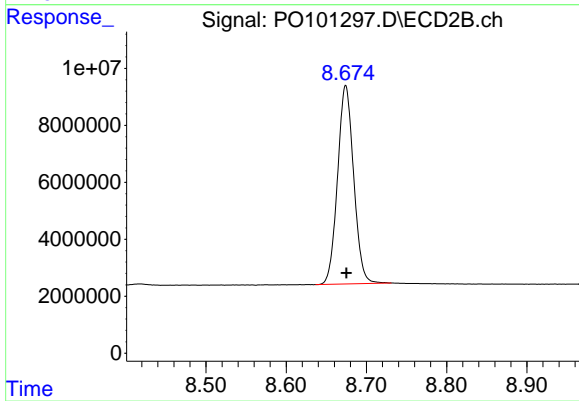
Instrument :
ECD_O
ClientSampleId :
AR1248CCC500



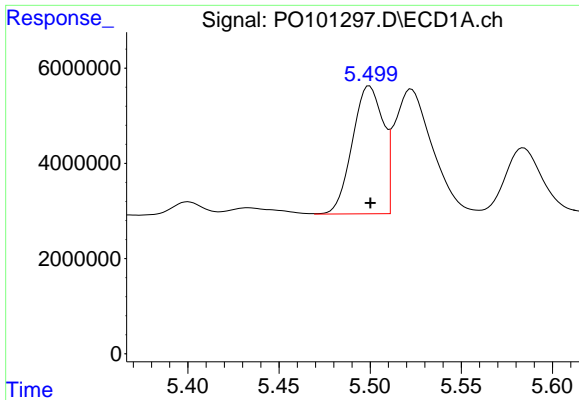
#1 Tetrachloro-m-xylene
R.T.: 3.631 min
Delta R.T.: 0.000 min
Response: 129492169
Conc: 50.11 ng/ml



#2 Decachlorobiphenyl
R.T.: 10.056 min
Delta R.T.: -0.002 min
Response: 120050037
Conc: 51.52 ng/ml



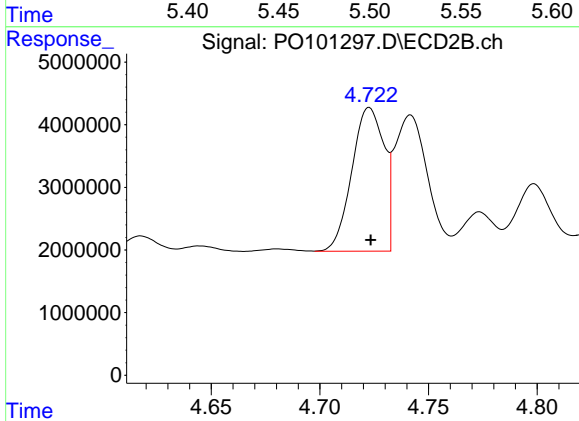
#2 Decachlorobiphenyl
R.T.: 8.674 min
Delta R.T.: 0.000 min
Response: 97263158
Conc: 51.33 ng/ml



#3 AR-1016-1

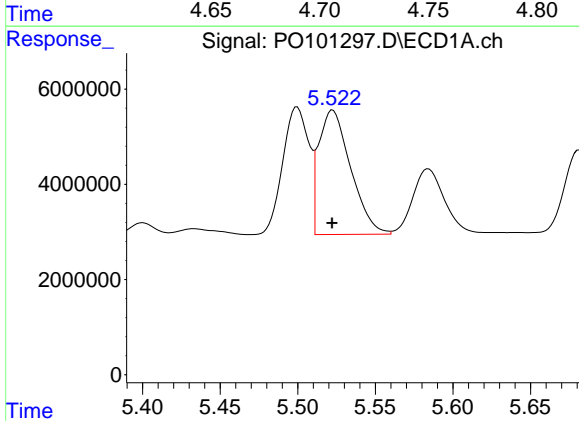
R.T.: 5.500 min
 Delta R.T.: 0.000 min
 Response: 31565095
 Conc: 322.90 ng/ml

Instrument :
 ECD_O
 ClientSampleId :
 AR1248CCC500



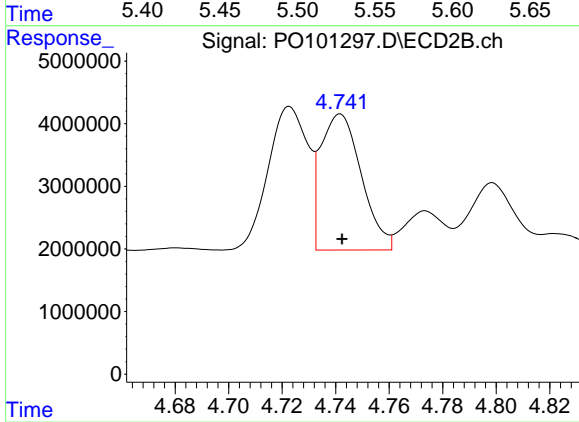
#3 AR-1016-1

R.T.: 4.723 min
 Delta R.T.: 0.000 min
 Response: 23642145
 Conc: 319.80 ng/ml



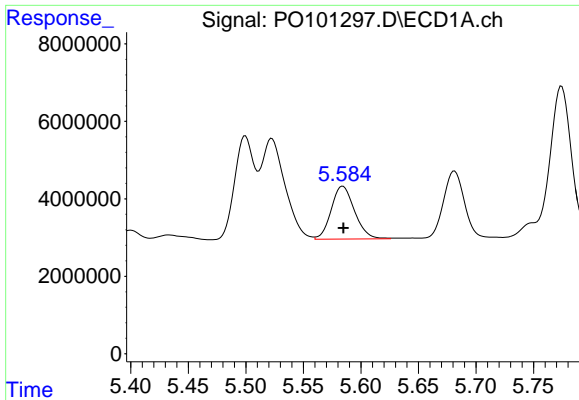
#4 AR-1016-2

R.T.: 5.523 min
 Delta R.T.: 0.000 min
 Response: 37517087
 Conc: 272.74 ng/ml



#4 AR-1016-2

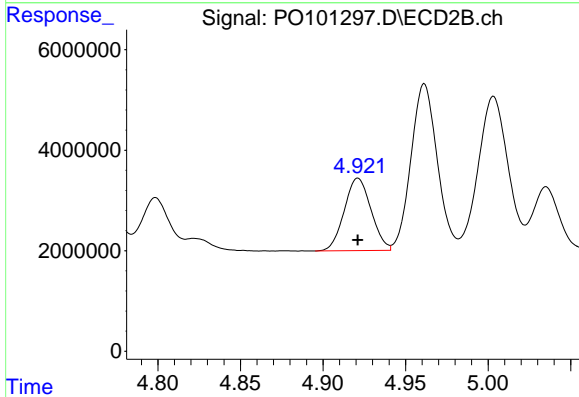
R.T.: 4.742 min
 Delta R.T.: 0.000 min
 Response: 22902369
 Conc: 232.36 ng/ml



#5 AR-1016-3

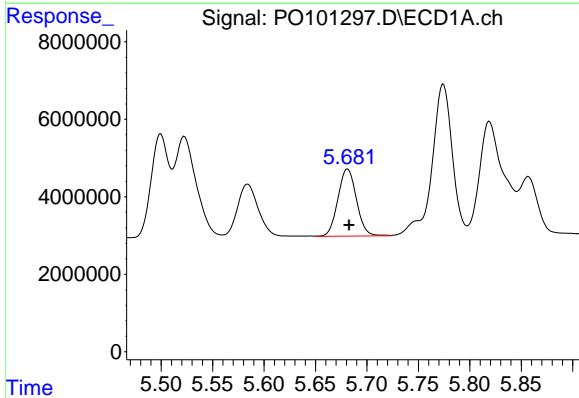
R.T.: 5.584 min
 Delta R.T.: 0.000 min
 Response: 19319230
 Conc: 215.35 ng/ml

Instrument :
 ECD_O
 ClientSampleId :
 AR1248CCC500



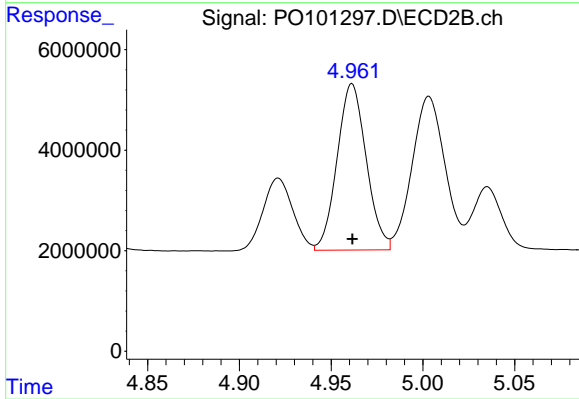
#5 AR-1016-3

R.T.: 4.921 min
 Delta R.T.: 0.000 min
 Response: 16308476
 Conc: 297.27 ng/ml



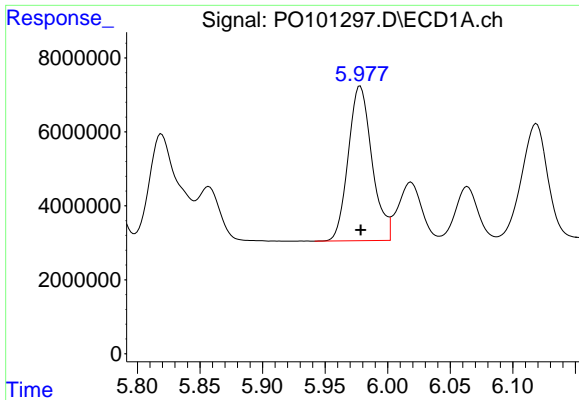
#6 AR-1016-4

R.T.: 5.681 min
 Delta R.T.: -0.001 min
 Response: 21818550
 Conc: 305.27 ng/ml



#6 AR-1016-4

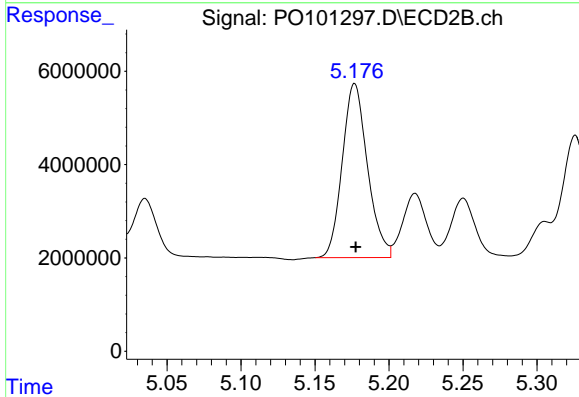
R.T.: 4.961 min
 Delta R.T.: 0.000 min
 Response: 36510179
 Conc: 718.44 ng/ml



#7 AR-1016-5

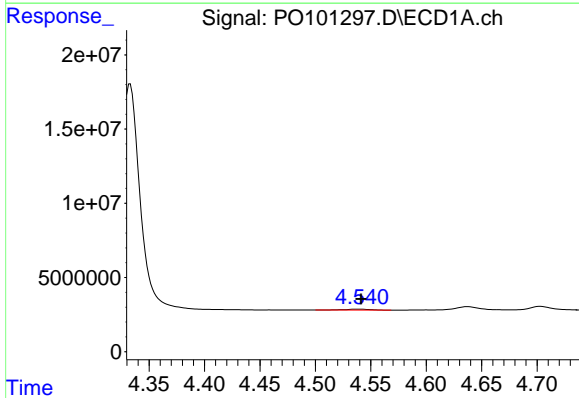
R.T.: 5.978 min
 Delta R.T.: 0.000 min
 Response: 55300942
 Conc: 699.61 ng/ml

Instrument :
 ECD_O
 ClientSampleId :
 AR1248CCC500



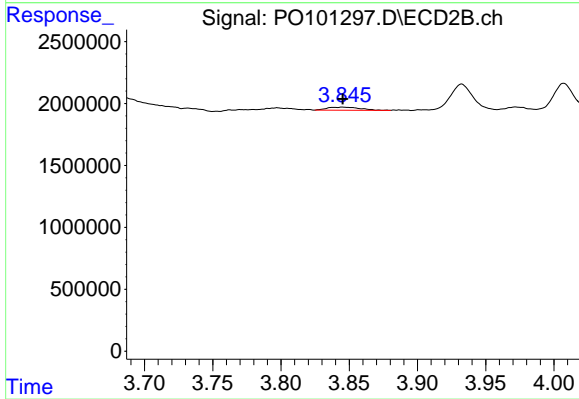
#7 AR-1016-5

R.T.: 5.177 min
 Delta R.T.: 0.000 min
 Response: 44188088
 Conc: 676.84 ng/ml



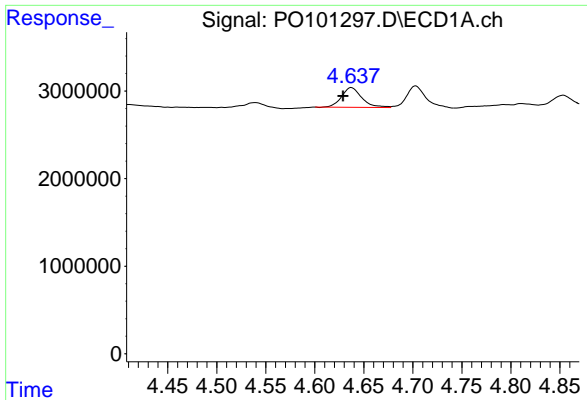
#8 AR-1221-1

R.T.: 4.540 min
 Delta R.T.: -0.001 min
 Response: 1024117
 Conc: 24.46 ng/ml



#8 AR-1221-1

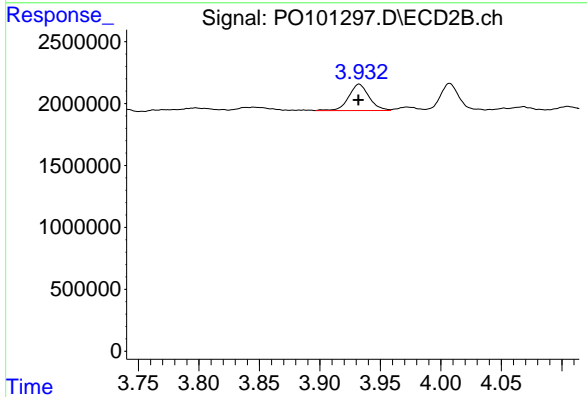
R.T.: 3.845 min
 Delta R.T.: 0.000 min
 Response: 424400
 Conc: 14.82 ng/ml



#9 AR-1221-2

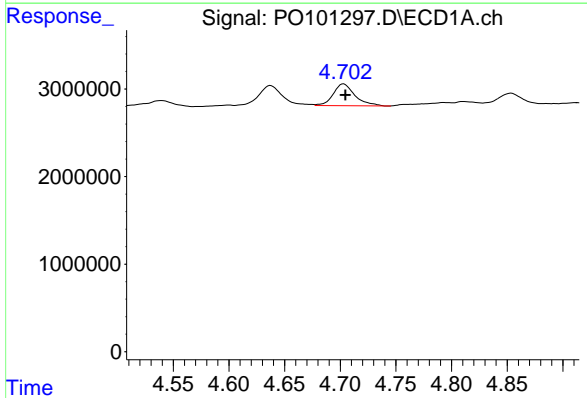
R.T.: 4.637 min
 Delta R.T.: 0.009 min
 Response: 3231028
 Conc: 101.84 ng/ml

Instrument :
 ECD_O
 ClientSampleId :
 AR1248CCC500



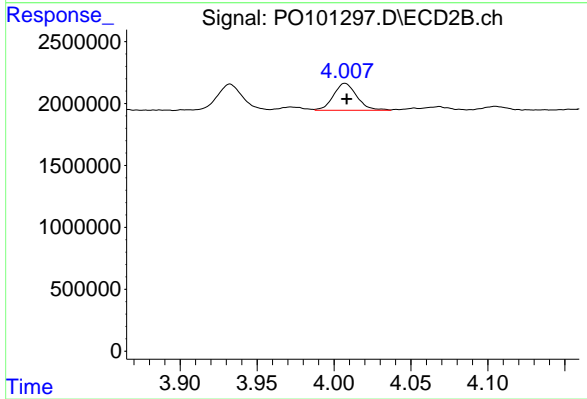
#9 AR-1221-2

R.T.: 3.932 min
 Delta R.T.: 0.000 min
 Response: 2487345
 Conc: 111.22 ng/ml



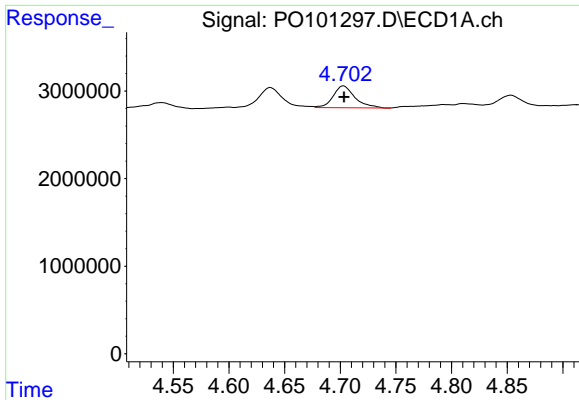
#10 AR-1221-3

R.T.: 4.703 min
 Delta R.T.: -0.002 min
 Response: 3397509
 Conc: 38.37 ng/ml



#10 AR-1221-3

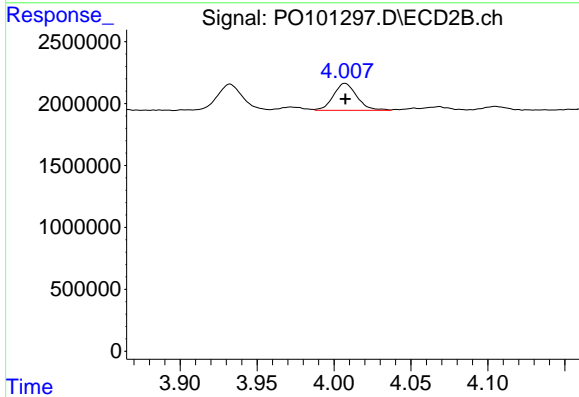
R.T.: 4.007 min
 Delta R.T.: -0.001 min
 Response: 2301866
 Conc: 36.21 ng/ml



#11 AR-1232-1

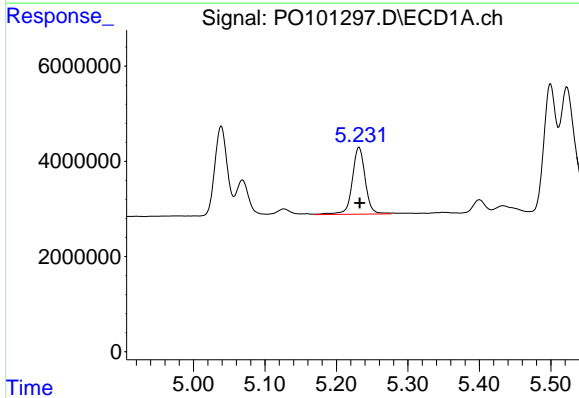
R.T.: 4.703 min
 Delta R.T.: 0.000 min
 Response: 3397509
 Conc: 44.94 ng/ml

Instrument :
 ECD_O
 ClientSampleId :
 AR1248CCC500



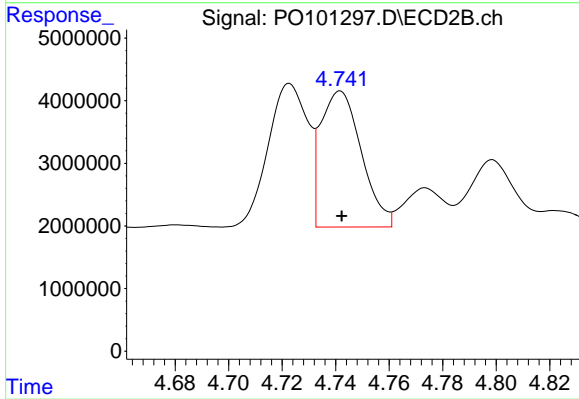
#11 AR-1232-1

R.T.: 4.007 min
 Delta R.T.: 0.000 min
 Response: 2301866
 Conc: 42.19 ng/ml



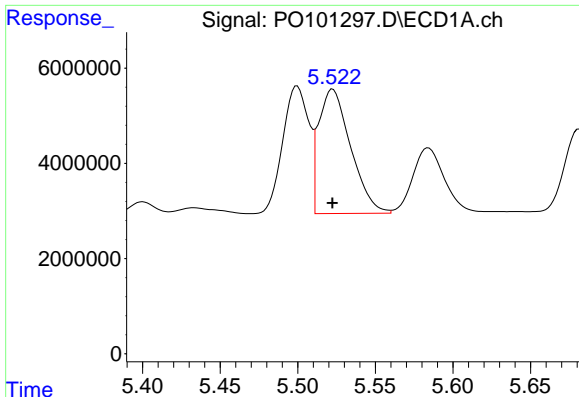
#12 AR-1232-2

R.T.: 5.232 min
 Delta R.T.: 0.000 min
 Response: 17820552
 Conc: 392.16 ng/ml



#12 AR-1232-2

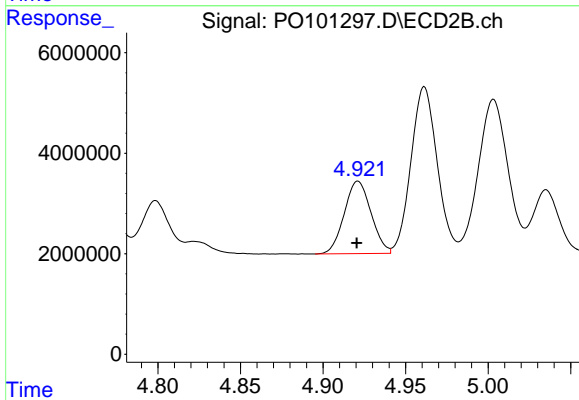
R.T.: 4.742 min
 Delta R.T.: 0.000 min
 Response: 22902369
 Conc: 476.29 ng/ml



#13 AR-1232-3

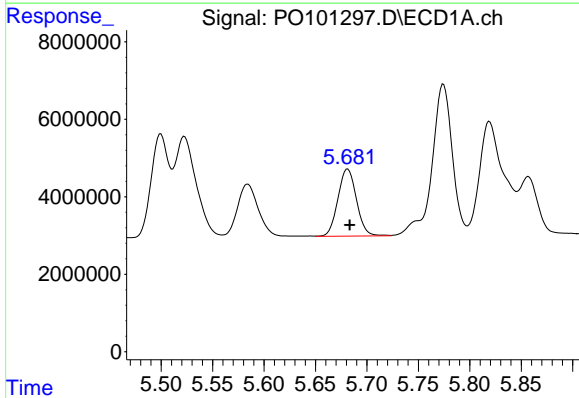
R.T.: 5.523 min
Delta R.T.: 0.000 min
Response: 37517087
Conc: 560.47 ng/ml

Instrument :
ECD_O
ClientSampleId :
AR1248CCC500



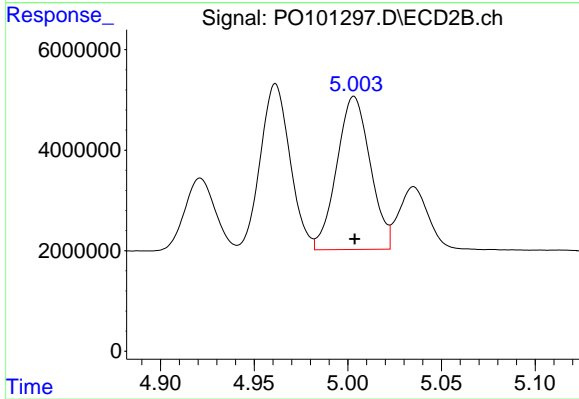
#13 AR-1232-3

R.T.: 4.921 min
Delta R.T.: 0.000 min
Response: 16308476
Conc: 621.97 ng/ml



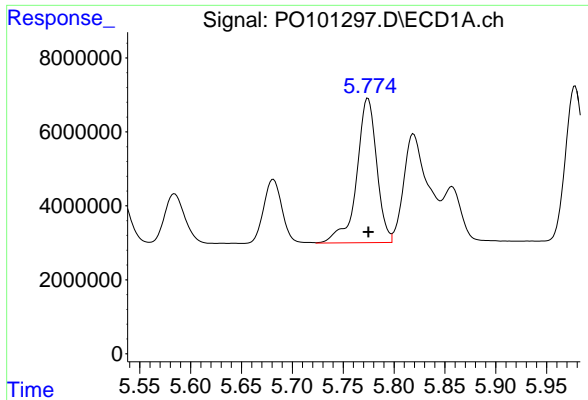
#14 AR-1232-4

R.T.: 5.681 min
Delta R.T.: -0.002 min
Response: 21818550
Conc: 609.49 ng/ml



#14 AR-1232-4

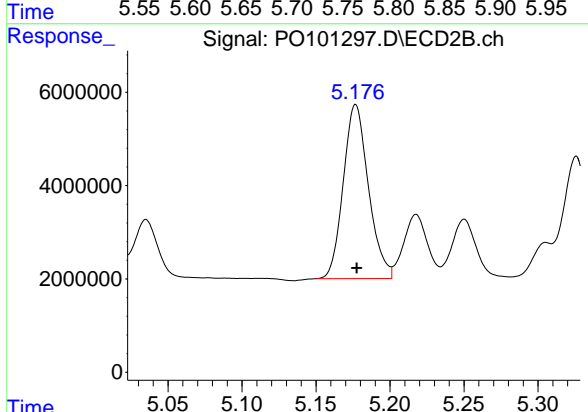
R.T.: 5.003 min
Delta R.T.: 0.000 min
Response: 37863957
Conc: 1359.69 ng/ml



#15 AR-1232-5

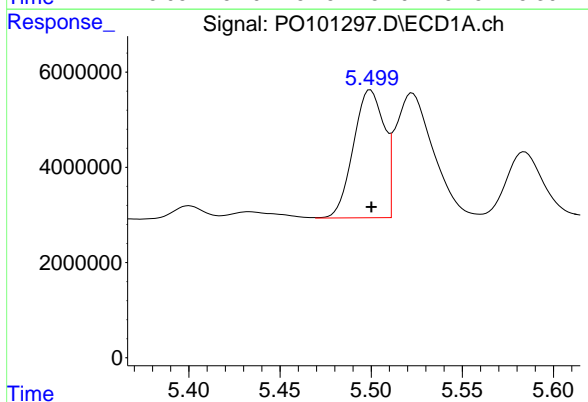
R.T.: 5.774 min
 Delta R.T.: 0.000 min
 Response: 53516987
 Conc: 1568.65 ng/ml

Instrument :
 ECD_O
 ClientSampleId :
 AR1248CCC500



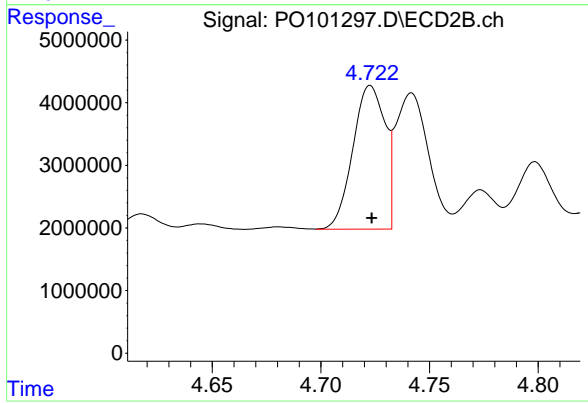
#15 AR-1232-5

R.T.: 5.177 min
 Delta R.T.: 0.000 min
 Response: 44188088
 Conc: 1445.03 ng/ml



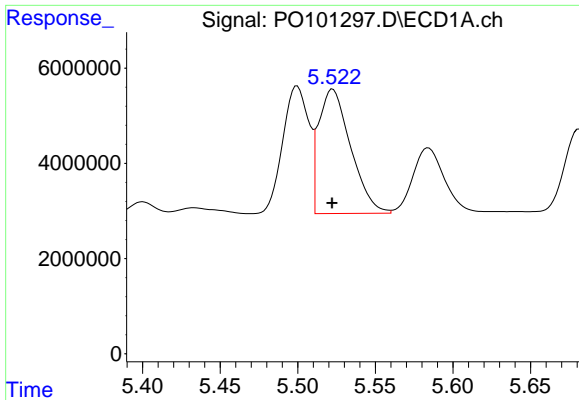
#16 AR-1242-1

R.T.: 5.500 min
 Delta R.T.: 0.000 min
 Response: 31565095
 Conc: 407.95 ng/ml



#16 AR-1242-1

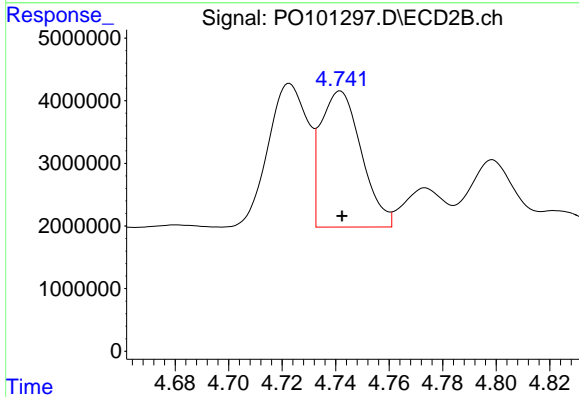
R.T.: 4.723 min
 Delta R.T.: 0.000 min
 Response: 23642145
 Conc: 401.84 ng/ml



#17 AR-1242-2

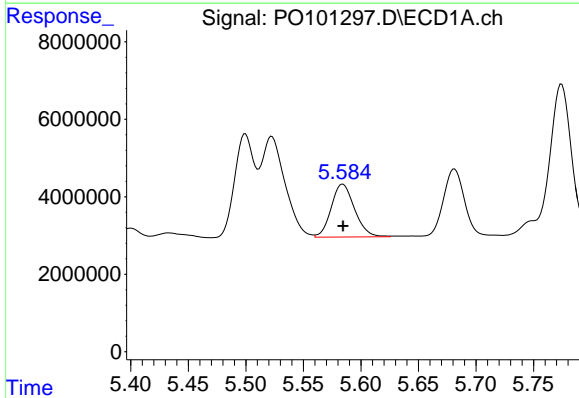
R.T.: 5.523 min
 Delta R.T.: 0.000 min
 Response: 37517087
 Conc: 346.43 ng/ml

Instrument :
 ECD_O
 ClientSampleId :
 AR1248CCC500



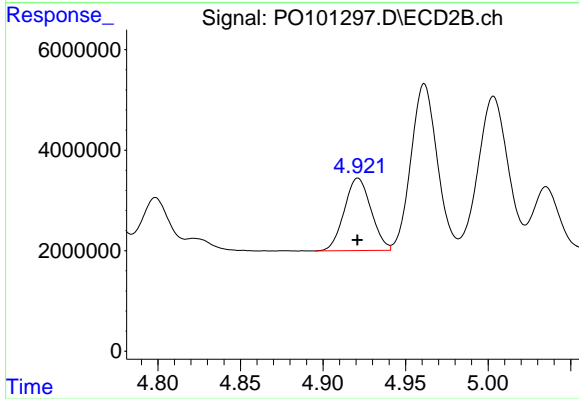
#17 AR-1242-2

R.T.: 4.742 min
 Delta R.T.: 0.000 min
 Response: 22902369
 Conc: 295.34 ng/ml



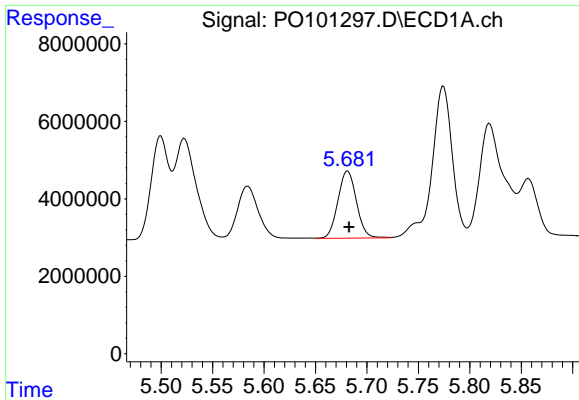
#18 AR-1242-3

R.T.: 5.584 min
 Delta R.T.: 0.000 min
 Response: 19319230
 Conc: 271.79 ng/ml



#18 AR-1242-3

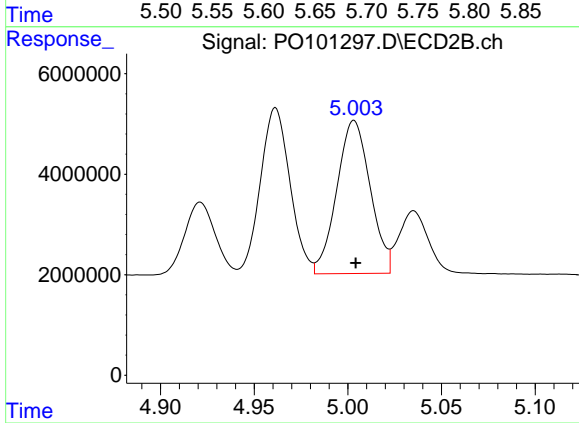
R.T.: 4.921 min
 Delta R.T.: 0.000 min
 Response: 16308476
 Conc: 376.21 ng/ml



#19 AR-1242-4

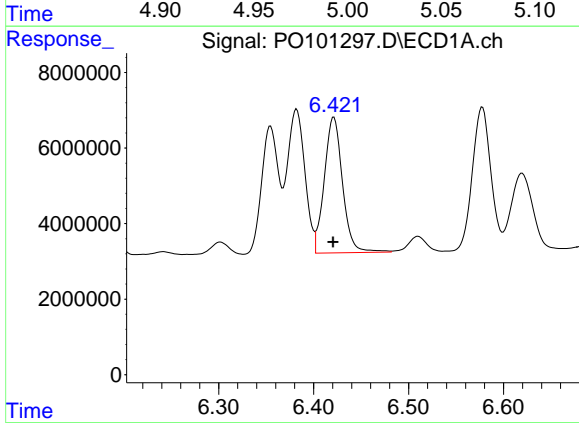
R.T.: 5.681 min
 Delta R.T.: -0.001 min
 Response: 21818550
 Conc: 383.08 ng/ml

Instrument :
 ECD_O
 ClientSampleId :
 AR1248CCC500



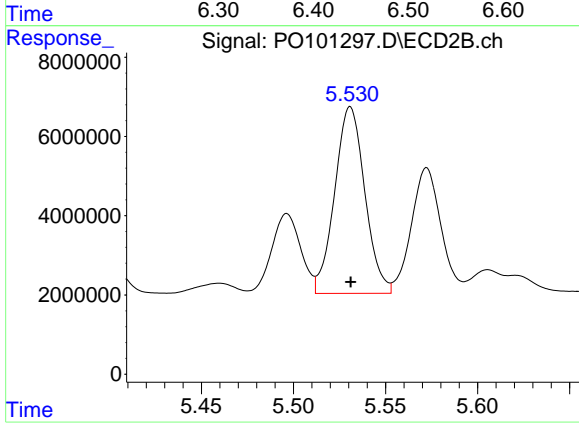
#19 AR-1242-4

R.T.: 5.003 min
 Delta R.T.: 0.000 min
 Response: 37863957
 Conc: 760.71 ng/ml



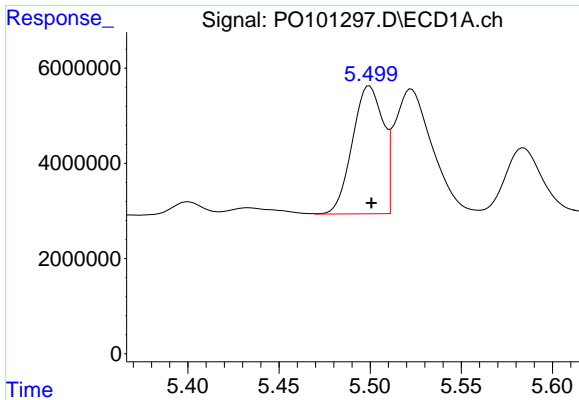
#20 AR-1242-5

R.T.: 6.421 min
 Delta R.T.: 0.000 min
 Response: 47954982
 Conc: 893.62 ng/ml



#20 AR-1242-5

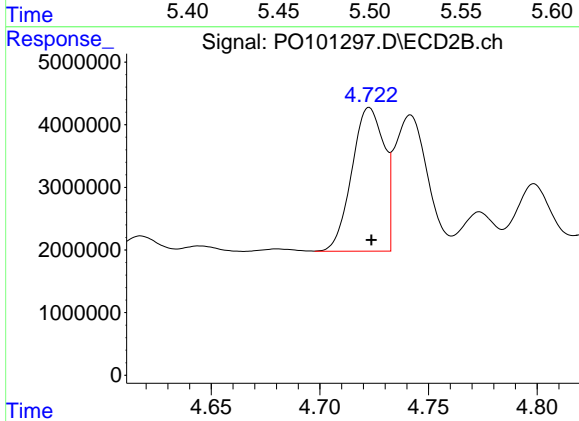
R.T.: 5.531 min
 Delta R.T.: 0.000 min
 Response: 53797946
 Conc: 1015.57 ng/ml



#21 AR-1248-1

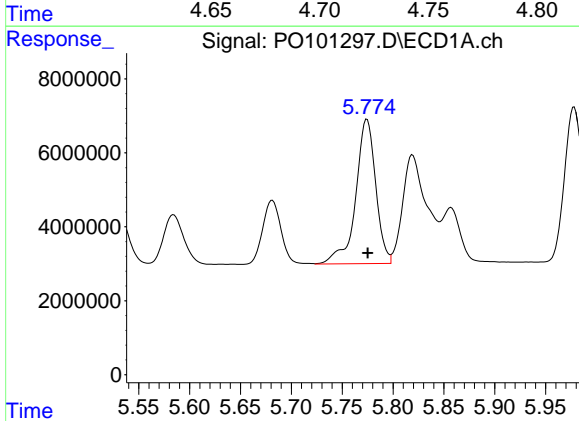
R.T.: 5.500 min
 Delta R.T.: -0.001 min
 Response: 31565095
 Conc: 544.58 ng/ml

Instrument :
 ECD_O
 ClientSampleId :
 AR1248CCC500



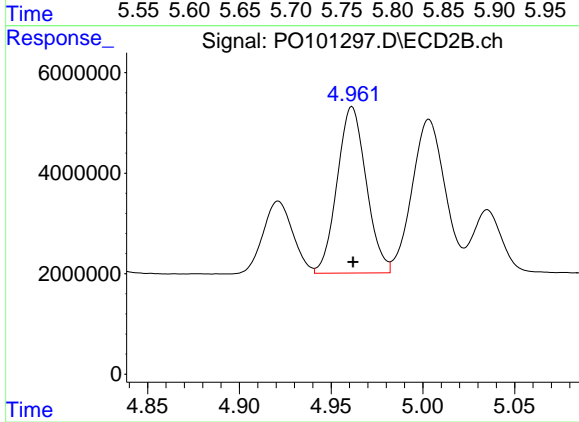
#21 AR-1248-1

R.T.: 4.723 min
 Delta R.T.: 0.000 min
 Response: 23642145
 Conc: 528.37 ng/ml



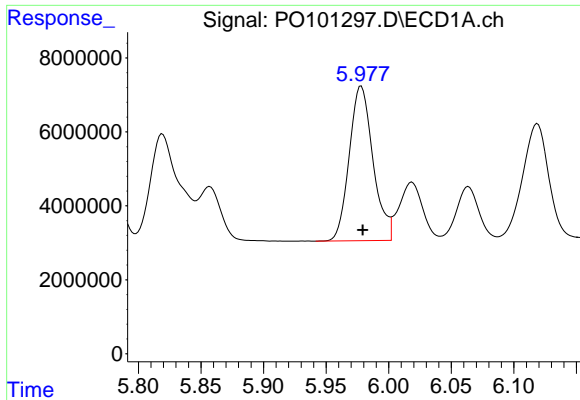
#22 AR-1248-2

R.T.: 5.774 min
 Delta R.T.: 0.000 min
 Response: 53516987
 Conc: 531.41 ng/ml



#22 AR-1248-2

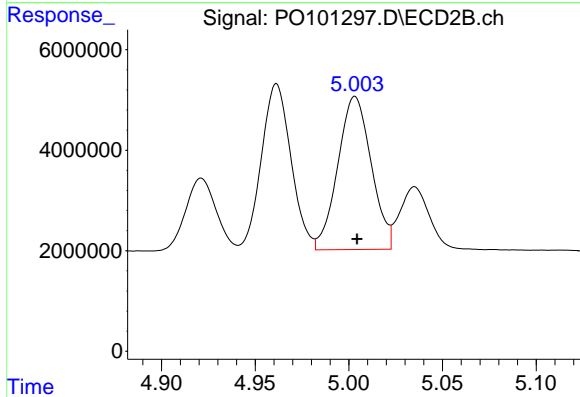
R.T.: 4.961 min
 Delta R.T.: 0.000 min
 Response: 36510179
 Conc: 519.26 ng/ml



#23 AR-1248-3

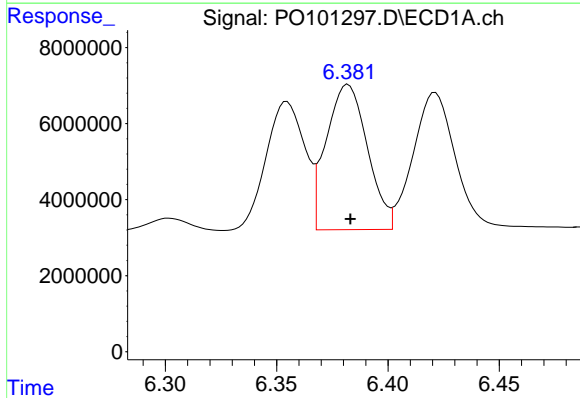
R.T.: 5.978 min
 Delta R.T.: -0.001 min
 Response: 55300942
 Conc: 533.73 ng/ml

Instrument :
 ECD_O
 ClientSampleId :
 AR1248CCC500



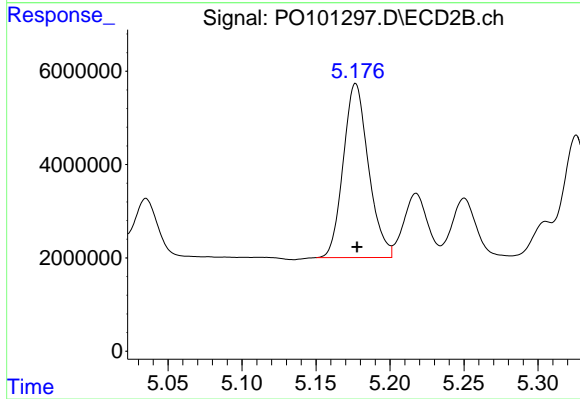
#23 AR-1248-3

R.T.: 5.003 min
 Delta R.T.: -0.001 min
 Response: 37863957
 Conc: 520.57 ng/ml



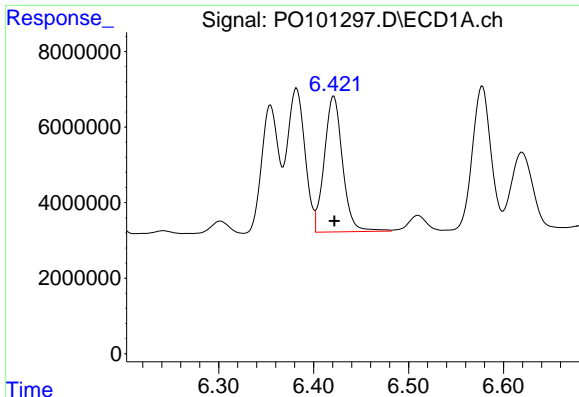
#24 AR-1248-4

R.T.: 6.382 min
 Delta R.T.: -0.001 min
 Response: 49139506
 Conc: 541.12 ng/ml



#24 AR-1248-4

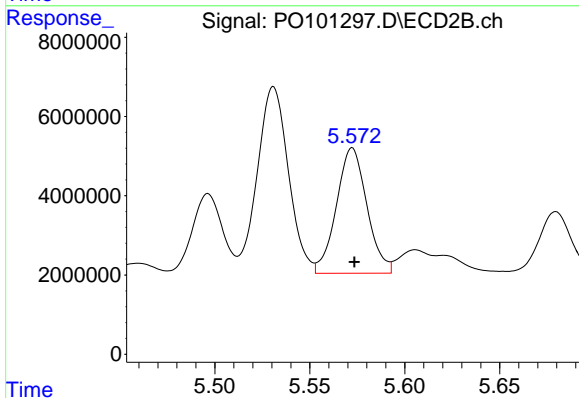
R.T.: 5.177 min
 Delta R.T.: 0.000 min
 Response: 44188088
 Conc: 519.79 ng/ml



#25 AR-1248-5

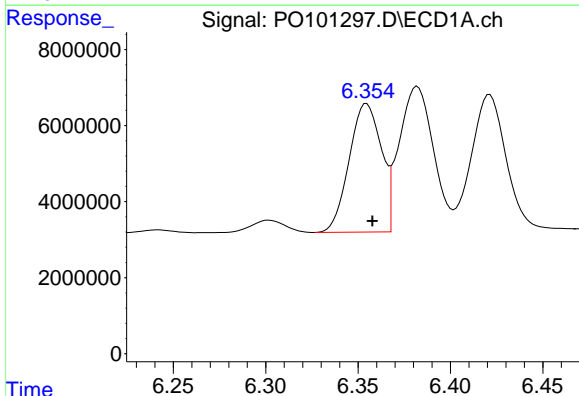
R.T.: 6.421 min
 Delta R.T.: 0.000 min
 Response: 47954982
 Conc: 537.63 ng/ml

Instrument :
 ECD_O
 ClientSampleId :
 AR1248CCC500



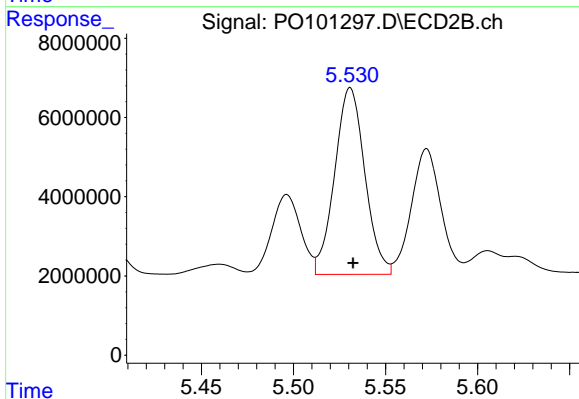
#25 AR-1248-5

R.T.: 5.572 min
 Delta R.T.: -0.001 min
 Response: 35506513
 Conc: 518.57 ng/ml



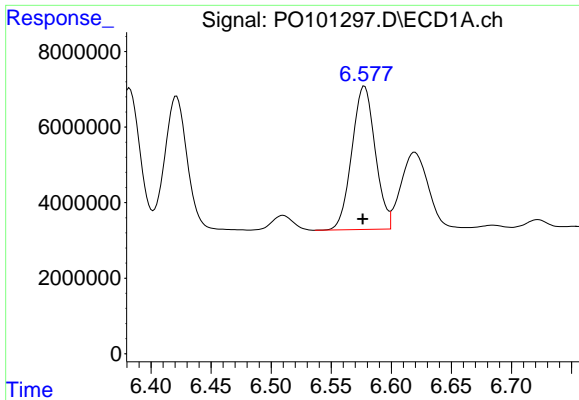
#26 AR-1254-1

R.T.: 6.355 min
 Delta R.T.: -0.003 min
 Response: 40955061
 Conc: 344.22 ng/ml



#26 AR-1254-1

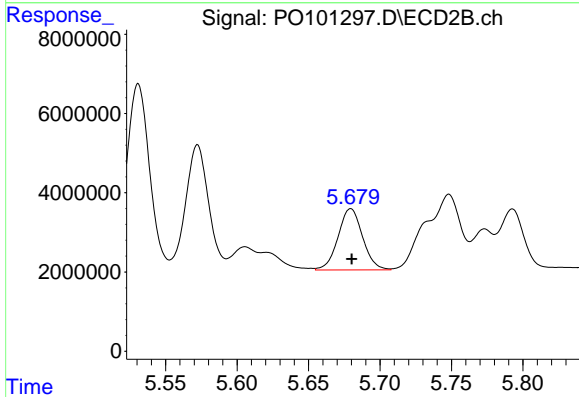
R.T.: 5.531 min
 Delta R.T.: -0.001 min
 Response: 53797946
 Conc: 432.42 ng/ml



#27 AR-1254-2

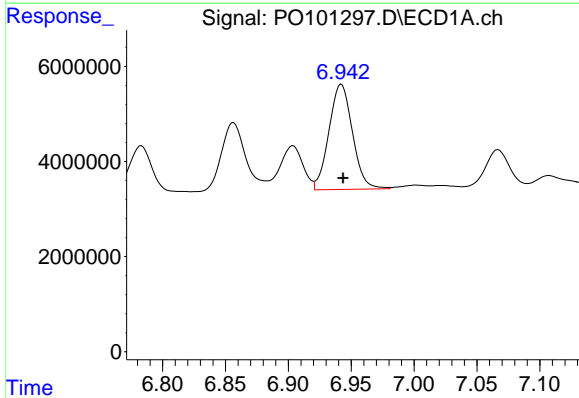
R.T.: 6.578 min
 Delta R.T.: 0.002 min
 Response: 51240314
 Conc: 300.85 ng/ml

Instrument :
 ECD_O
 ClientSampleId :
 AR1248CCC500



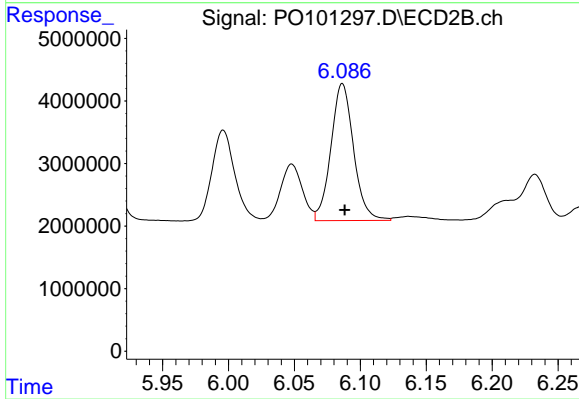
#27 AR-1254-2

R.T.: 5.680 min
 Delta R.T.: 0.000 min
 Response: 18482408
 Conc: 165.11 ng/ml



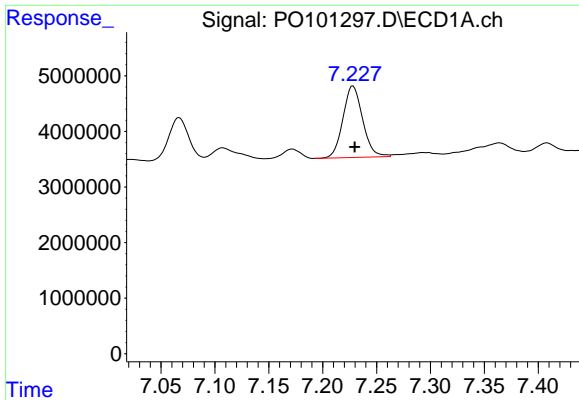
#28 AR-1254-3

R.T.: 6.942 min
 Delta R.T.: -0.001 min
 Response: 28833775
 Conc: 175.58 ng/ml



#28 AR-1254-3

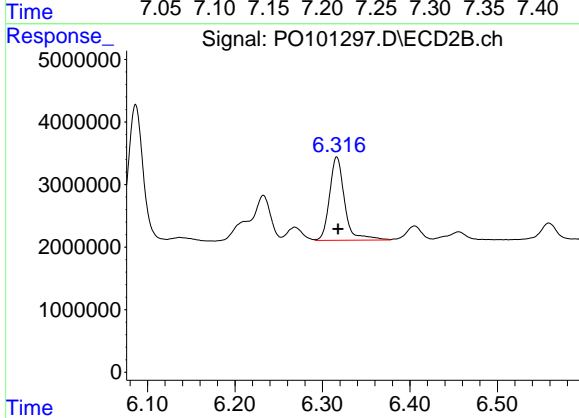
R.T.: 6.086 min
 Delta R.T.: -0.002 min
 Response: 26210990
 Conc: 157.52 ng/ml



#29 AR-1254-4

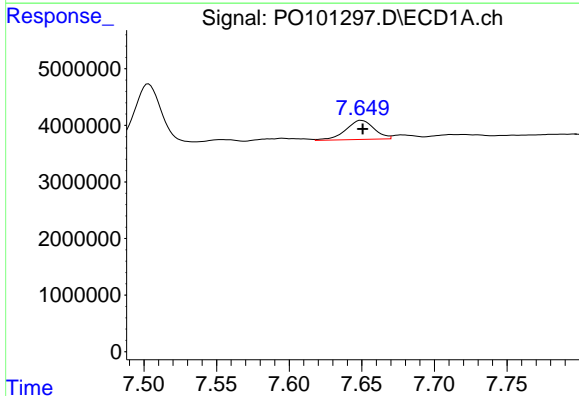
R.T.: 7.228 min
 Delta R.T.: -0.002 min
 Response: 16298919
 Conc: 163.07 ng/ml

Instrument :
 ECD_O
 ClientSampleId :
 AR1248CCC500



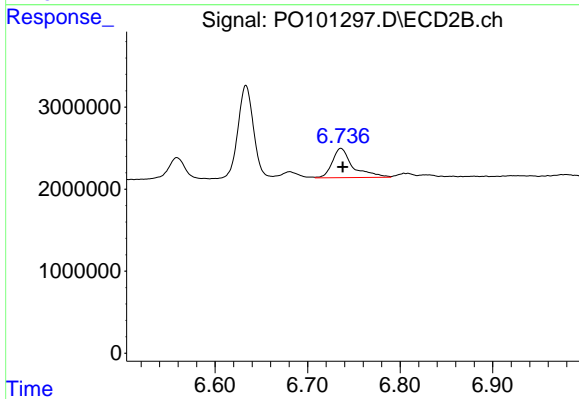
#29 AR-1254-4

R.T.: 6.316 min
 Delta R.T.: -0.001 min
 Response: 16022590
 Conc: 187.85 ng/ml



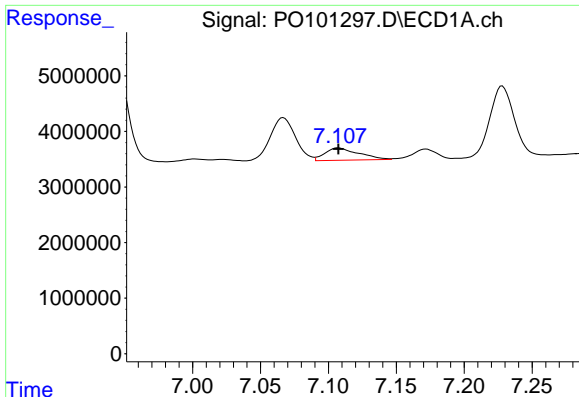
#30 AR-1254-5

R.T.: 7.650 min
 Delta R.T.: 0.000 min
 Response: 4611268
 Conc: 39.23 ng/ml



#30 AR-1254-5

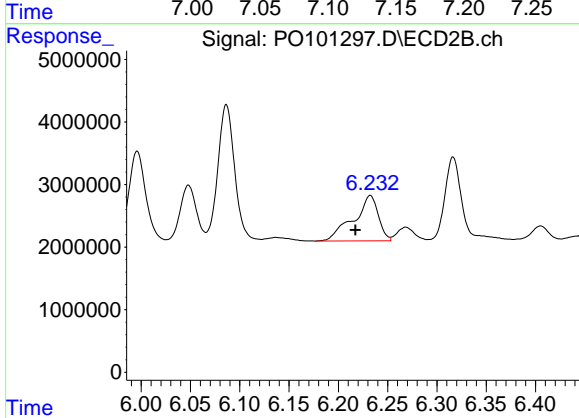
R.T.: 6.736 min
 Delta R.T.: -0.002 min
 Response: 5580493
 Conc: 41.19 ng/ml



#31 AR-1260-1

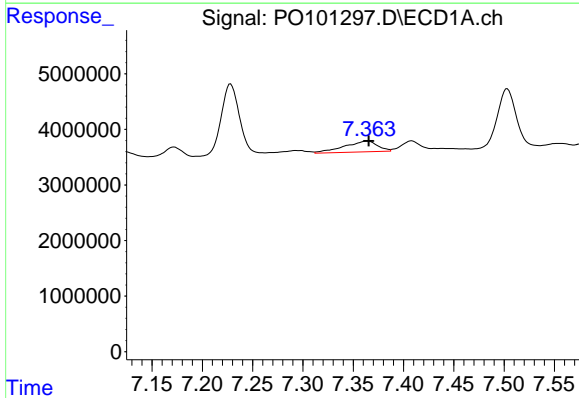
R.T.: 7.107 min
 Delta R.T.: 0.000 min
 Response: 3850955
 Conc: 27.00 ng/ml

Instrument :
 ECD_O
 ClientSampleId :
 AR1248CCC500



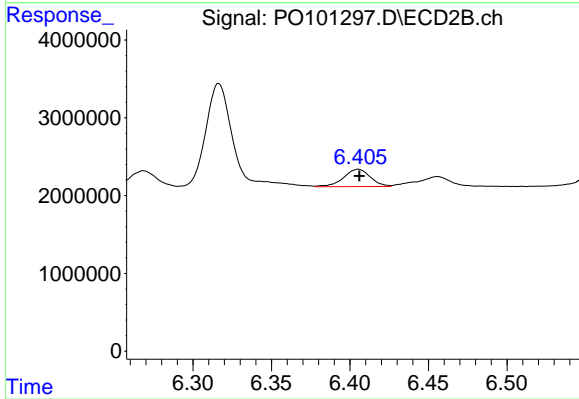
#31 AR-1260-1

R.T.: 6.232 min
 Delta R.T.: 0.015 min
 Response: 12716271
 Conc: 103.05 ng/ml



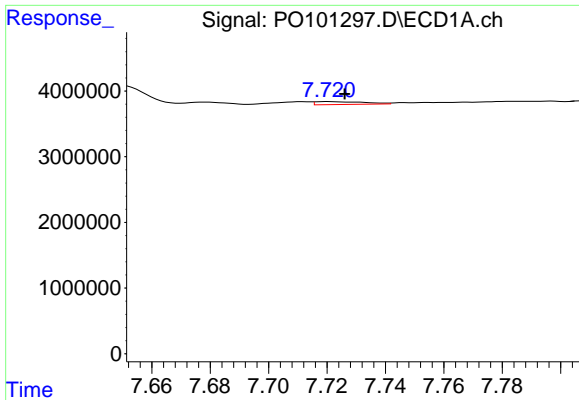
#32 AR-1260-2

R.T.: 7.364 min
 Delta R.T.: -0.001 min
 Response: 4475672
 Conc: 30.55 ng/ml



#32 AR-1260-2

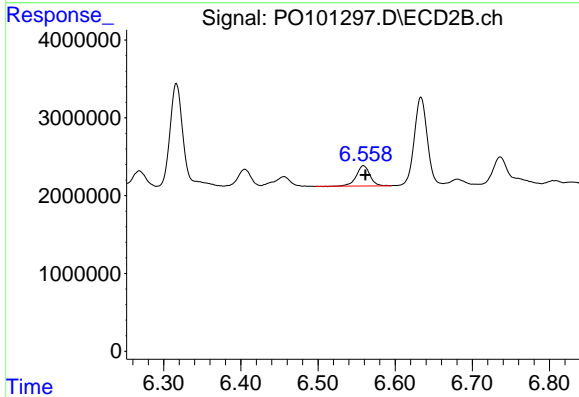
R.T.: 6.405 min
 Delta R.T.: 0.000 min
 Response: 2650774
 Conc: 19.39 ng/ml



#33 AR-1260-3

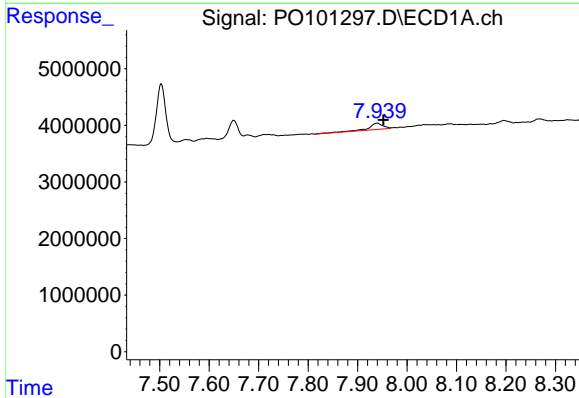
R.T.: 7.721 min
 Delta R.T.: -0.005 min
 Response: 516441
 Conc: 4.42 ng/ml

Instrument :
 ECD_O
 ClientSampleId :
 AR1248CCC500



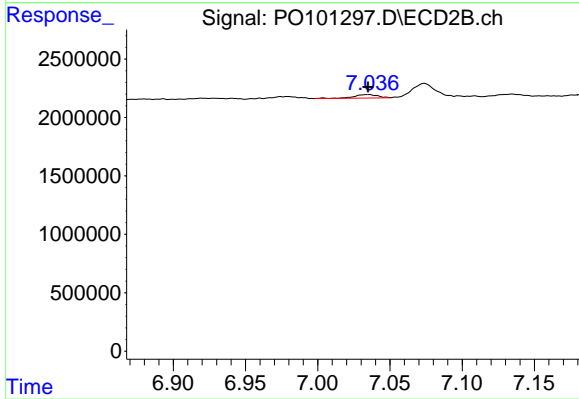
#33 AR-1260-3

R.T.: 6.559 min
 Delta R.T.: -0.003 min
 Response: 3215948
 Conc: 25.07 ng/ml



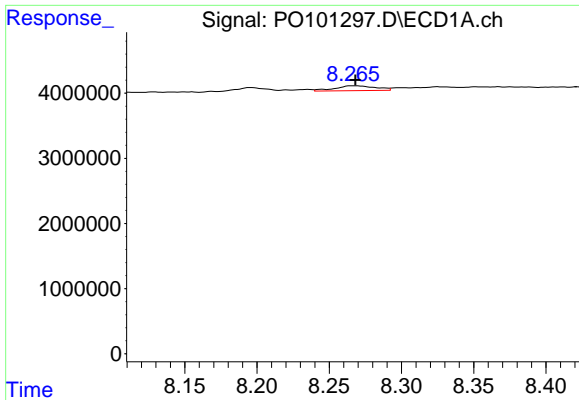
#34 AR-1260-4

R.T.: 7.940 min
 Delta R.T.: -0.013 min
 Response: 2187761
 Conc: 18.58 ng/ml



#34 AR-1260-4

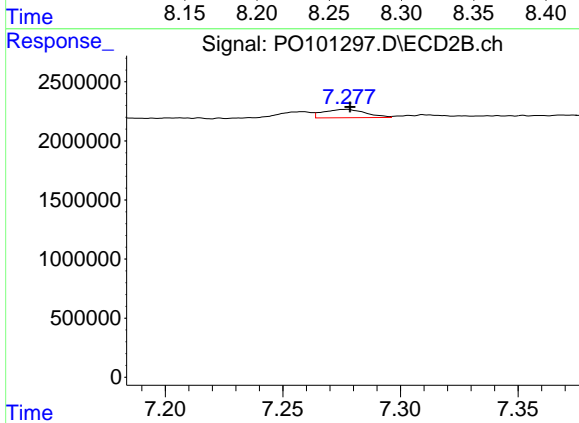
R.T.: 7.035 min
 Delta R.T.: 0.000 min
 Response: 344772
 Conc: 3.34 ng/ml



#35 AR-1260-5

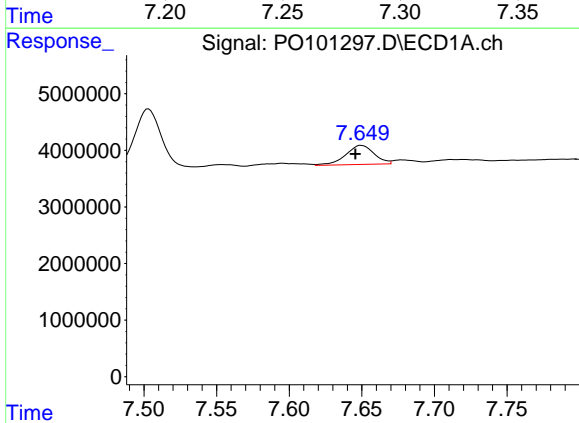
R.T.: 8.266 min
 Delta R.T.: -0.002 min
 Response: 1445018
 Conc: 6.59 ng/ml

Instrument :
 ECD_O
 ClientSampleId :
 AR1248CCC500



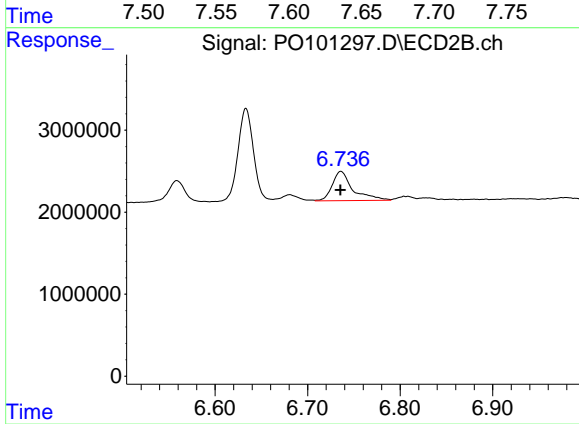
#35 AR-1260-5

R.T.: 7.277 min
 Delta R.T.: -0.002 min
 Response: 872067
 Conc: 4.15 ng/ml



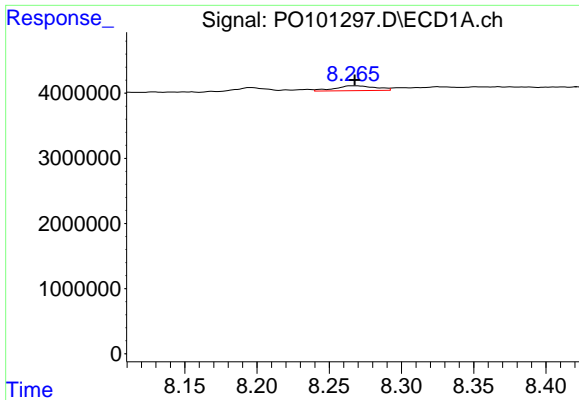
#36 AR-1262-1

R.T.: 7.650 min
 Delta R.T.: 0.004 min
 Response: 4611268
 Conc: 41.26 ng/ml



#36 AR-1262-1

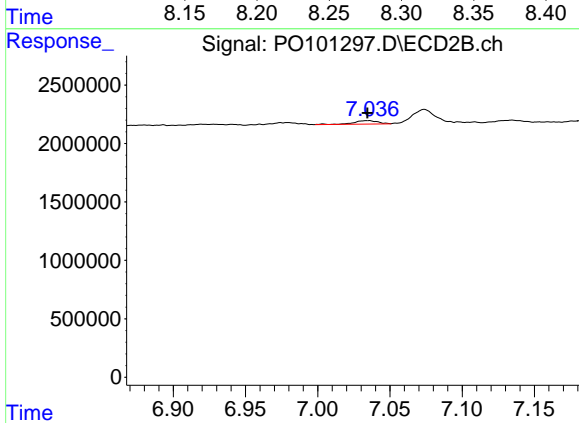
R.T.: 6.736 min
 Delta R.T.: 0.000 min
 Response: 5580493
 Conc: 68.84 ng/ml



#37 AR-1262-2

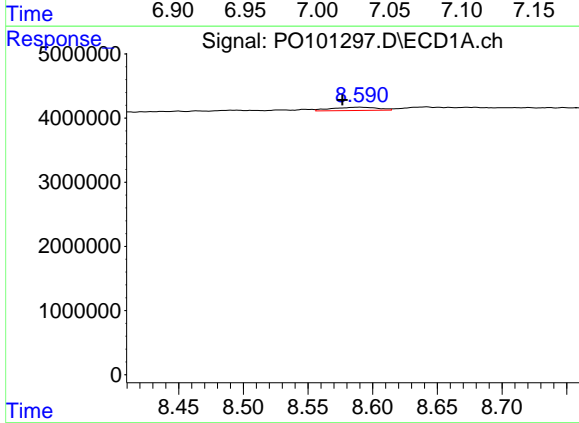
R.T.: 8.266 min
 Delta R.T.: -0.001 min
 Response: 1445018
 Conc: 5.31 ng/ml

Instrument :
 ECD_O
 ClientSampleId :
 AR1248CCC500



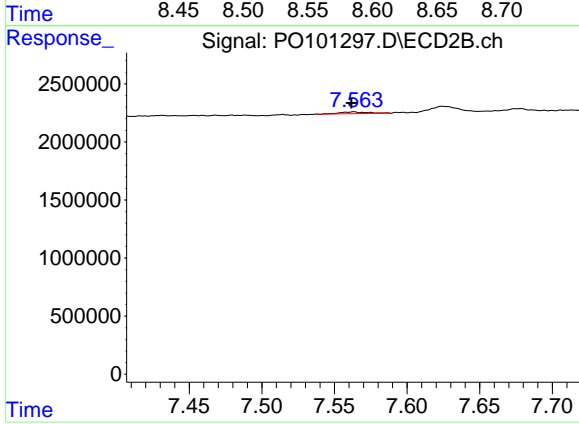
#37 AR-1262-2

R.T.: 7.035 min
 Delta R.T.: 0.000 min
 Response: 344772
 Conc: 2.32 ng/ml



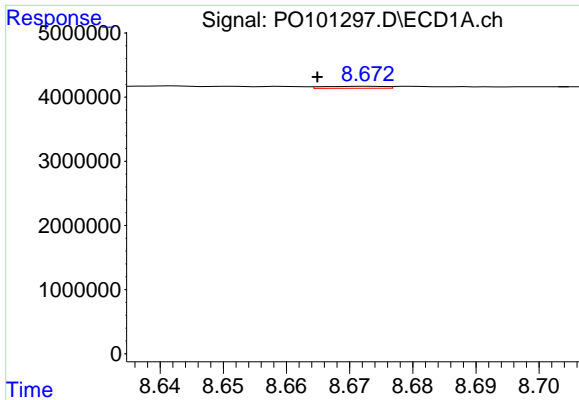
#38 AR-1262-3

R.T.: 8.590 min
 Delta R.T.: 0.013 min
 Response: 1272181
 Conc: 6.54 ng/ml



#38 AR-1262-3

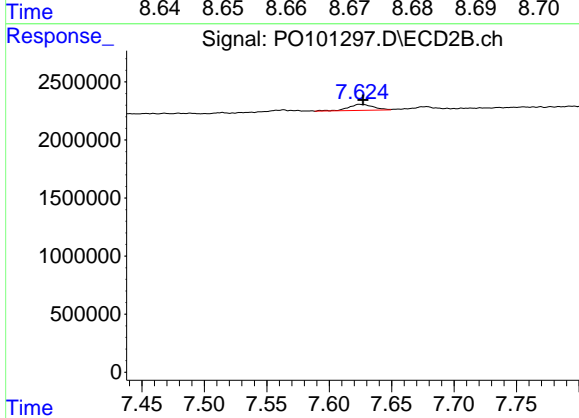
R.T.: 7.563 min
 Delta R.T.: 0.002 min
 Response: 206682
 Conc: 2.01 ng/ml



#39 AR-1262-4

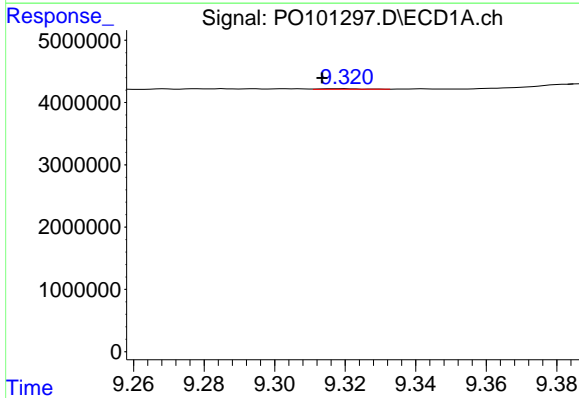
R.T.: 8.673 min
 Delta R.T.: 0.008 min
 Response: 203587
 Conc: 1.31 ng/ml

Instrument :
 ECD_O
 ClientSampleId :
 AR1248CCC500



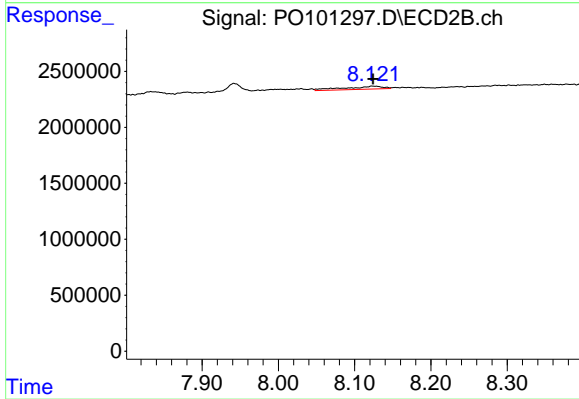
#39 AR-1262-4

R.T.: 7.625 min
 Delta R.T.: -0.002 min
 Response: 731326
 Conc: 3.75 ng/ml



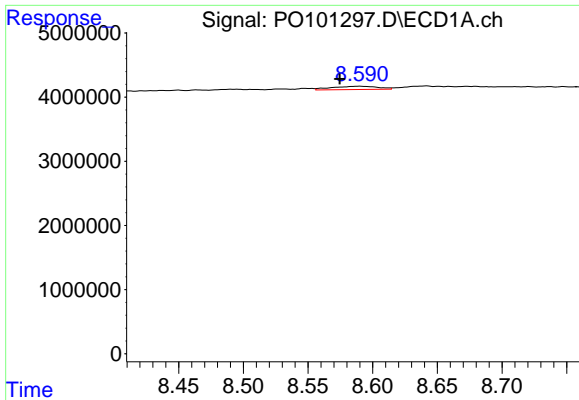
#40 AR-1262-5

R.T.: 9.320 min
 Delta R.T.: 0.006 min
 Response: 74787
 Conc: 0.80 ng/ml



#40 AR-1262-5

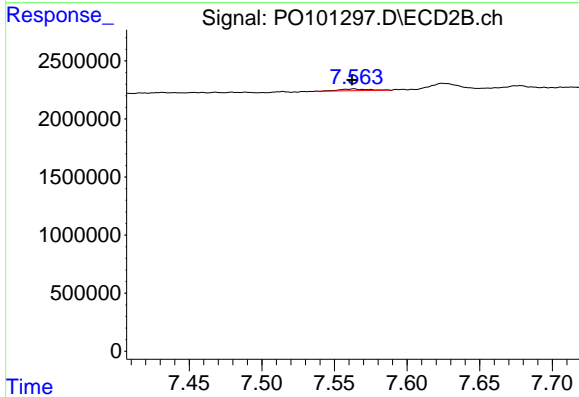
R.T.: 8.123 min
 Delta R.T.: -0.001 min
 Response: 937713
 Conc: 11.19 ng/ml



#41 AR-1268-1

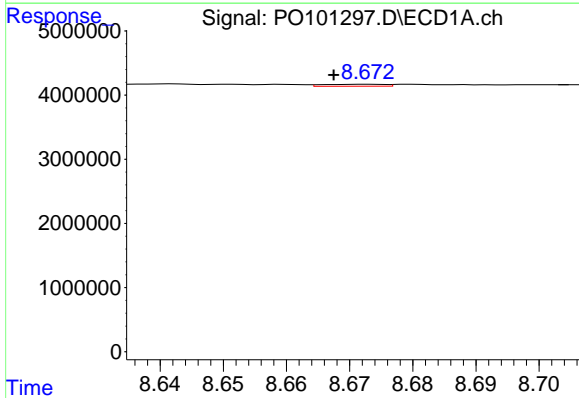
R.T.: 8.590 min
 Delta R.T.: 0.016 min
 Response: 1272181
 Conc: 4.01 ng/ml

Instrument :
 ECD_O
 ClientSampleId :
 AR1248CCC500



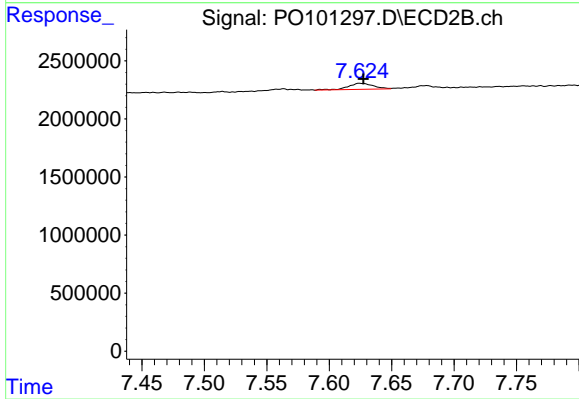
#41 AR-1268-1

R.T.: 7.563 min
 Delta R.T.: 0.001 min
 Response: 206682
 Conc: 0.74 ng/ml



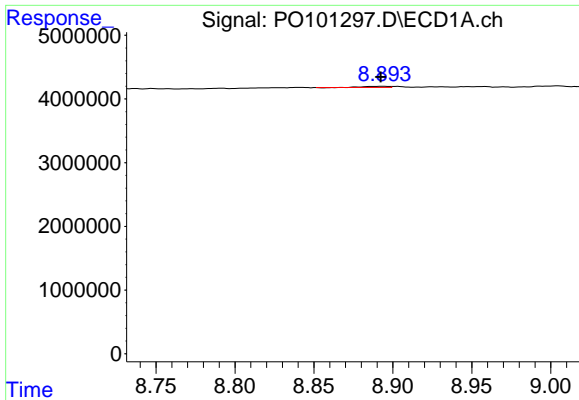
#42 AR-1268-2

R.T.: 8.673 min
 Delta R.T.: 0.005 min
 Response: 203587
 Conc: 0.70 ng/ml



#42 AR-1268-2

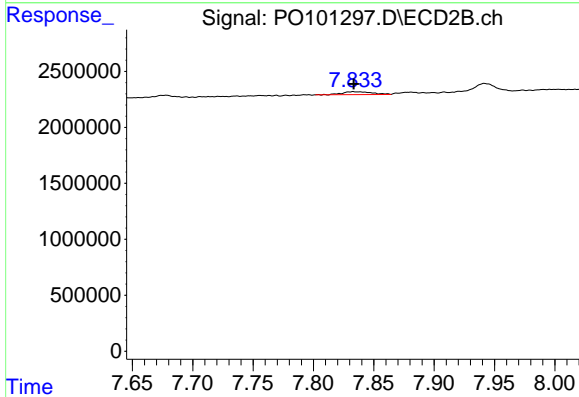
R.T.: 7.625 min
 Delta R.T.: -0.002 min
 Response: 731326
 Conc: 2.86 ng/ml



#43 AR-1268-3

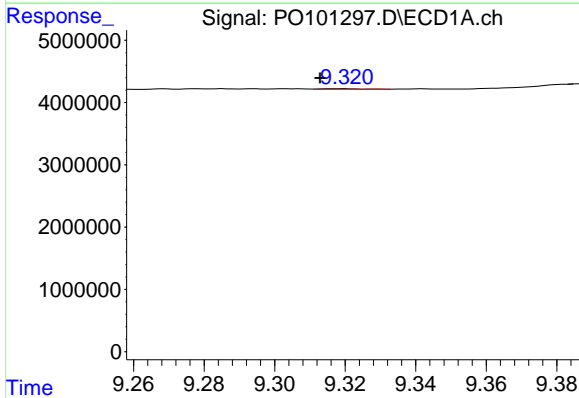
R.T.: 8.894 min
 Delta R.T.: 0.002 min
 Response: 184866
 Conc: 0.72 ng/ml

Instrument :
 ECD_O
 ClientSampleId :
 AR1248CCC500



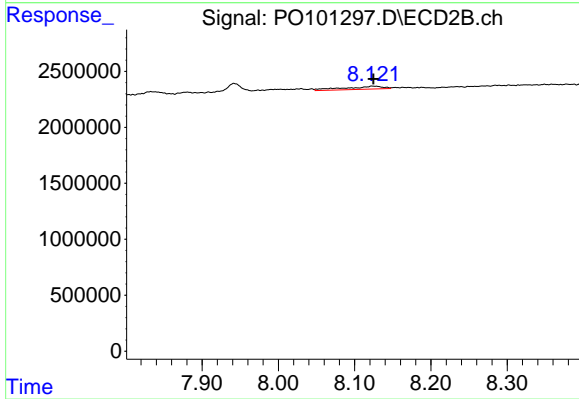
#43 AR-1268-3

R.T.: 7.833 min
 Delta R.T.: 0.000 min
 Response: 432627
 Conc: 1.86 ng/ml



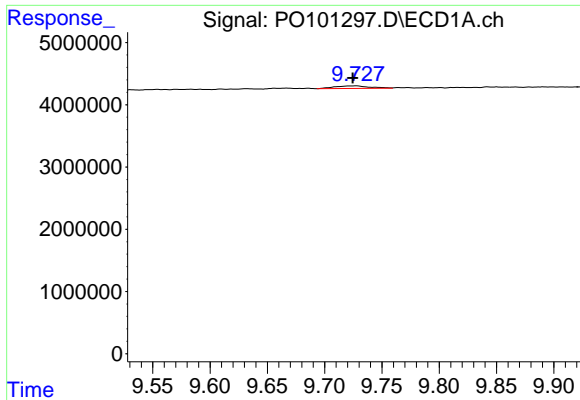
#44 AR-1268-4

R.T.: 9.320 min
 Delta R.T.: 0.007 min
 Response: 74787
 Conc: 0.81 ng/ml



#44 AR-1268-4

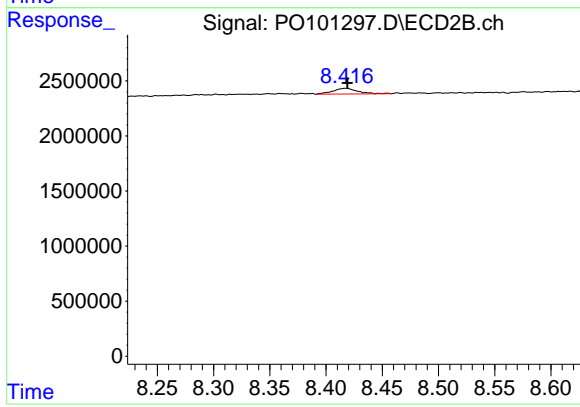
R.T.: 8.123 min
 Delta R.T.: -0.001 min
 Response: 937713
 Conc: 11.03 ng/ml



#45 AR-1268-5

R.T.: 9.728 min
 Delta R.T.: 0.003 min
 Response: 904725
 Conc: 1.13 ng/ml

Instrument :
 ECD_O
 ClientSampleId :
 AR1248CCC500



#45 AR-1268-5

R.T.: 8.418 min
 Delta R.T.: -0.002 min
 Response: 823002
 Conc: 1.25 ng/ml