

Data Path : Z:\pestpcbsrv\HPCHEM1\ECD_0\Data\P0012621\
 Data File : P0075202.D
 Signal(s) : Signal #1: ECD1A.CH Signal #2: ECD2B.CH
 Acq On : 26 Jan 2021 19:25
 Operator : AJ/MA
 Sample : M1247-09
 Misc :
 ALS Vial : 28 Sample Multiplier: 1

Instrument :
 ECD_0
ClientSampleId :
 250EM-019-0002

Manual Integrations
APPROVED
 mohammad
 1/27/2021 5:28:40 PM

Integration File signal 1: autoint1.e
 Integration File signal 2: autoint2.e
 Quant Time: Jan 27 01:03:01 2021
 Quant Method : Z:\pestpcbsrv\HPCHEM1\ECD_0\methods\P0011121.M
 Quant Title : GC EXTRACTABLES
 QLast Update : Tue Jan 12 06:02:45 2021
 Response via : Initial Calibration
 Integrator: ChemStation 6890 Scale Mode: Small noise peaks clipped

Volume Inj. : 2 µl
 Signal #1 Phase : ZB-MR1 Signal #2 Phase: ZB-MR2
 Signal #1 Info : 30Mx0.32mmx 0.50µ Signal #2 Info : 30M x 0.32mm x 0.25µm

Compound	RT#1	RT#2	Resp#1	Resp#2	ng/ml	ng/ml

System Monitoring Compounds						
1) SA Tetrachlo...	4.927	3.999	2584724	1220005	24.496	21.688
2) SA Decachlor...	10.945	9.251	2071658	1017915	20.412	18.540
Target Compounds						
36) L8 AR-1262-1	8.576	7.345	318022	25251	35.716	9.923m#
37) L8 AR-1262-2	9.134	7.894	332395	195437	21.711	21.256
38) L8 AR-1262-3	9.443	8.178	723595	414305	72.245	104.773 #
39) L8 AR-1262-4	9.540	8.244	716621	410227	96.225	61.919 #
40) L8 AR-1262-5	10.202	8.736	428932	240992	81.989	78.056

(f)=RT Delta > 1/2 Window (#)=Amounts differ by > 25% (m)=manual int.

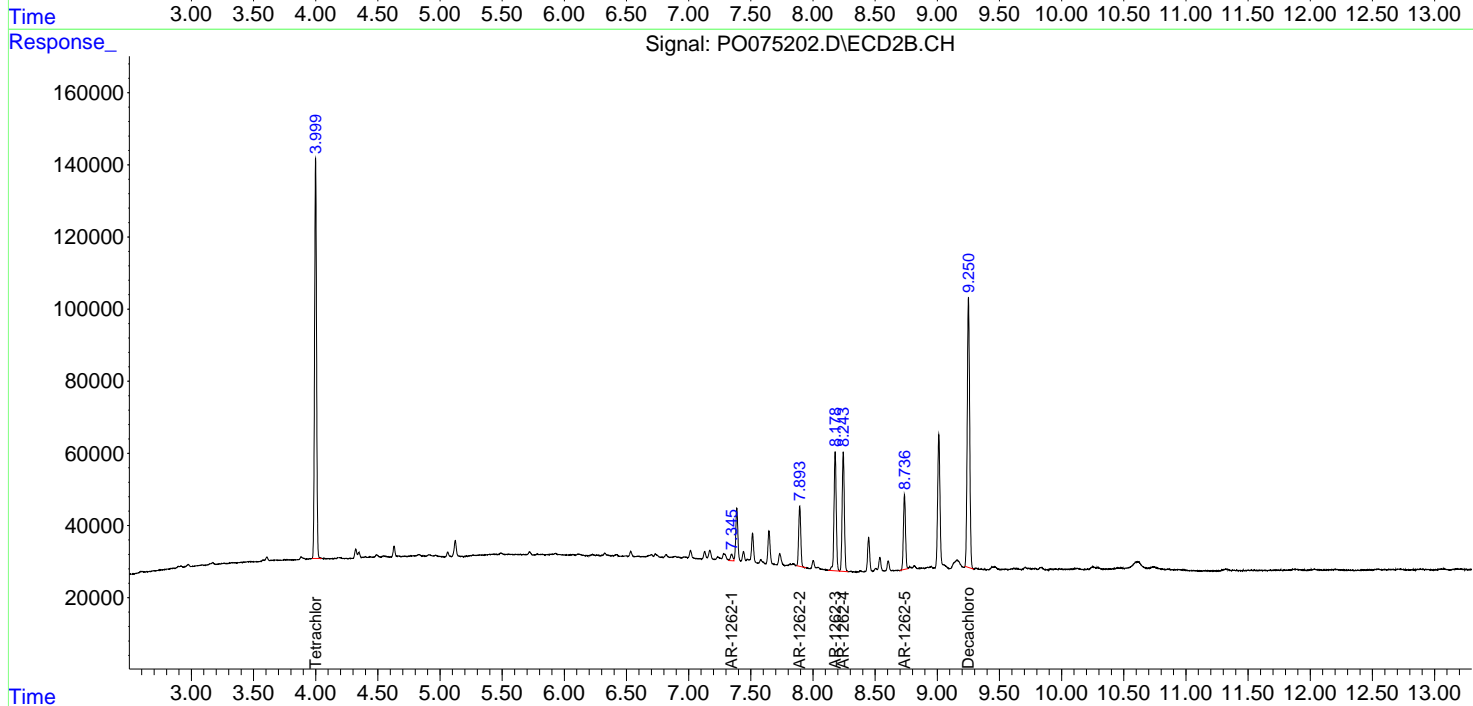
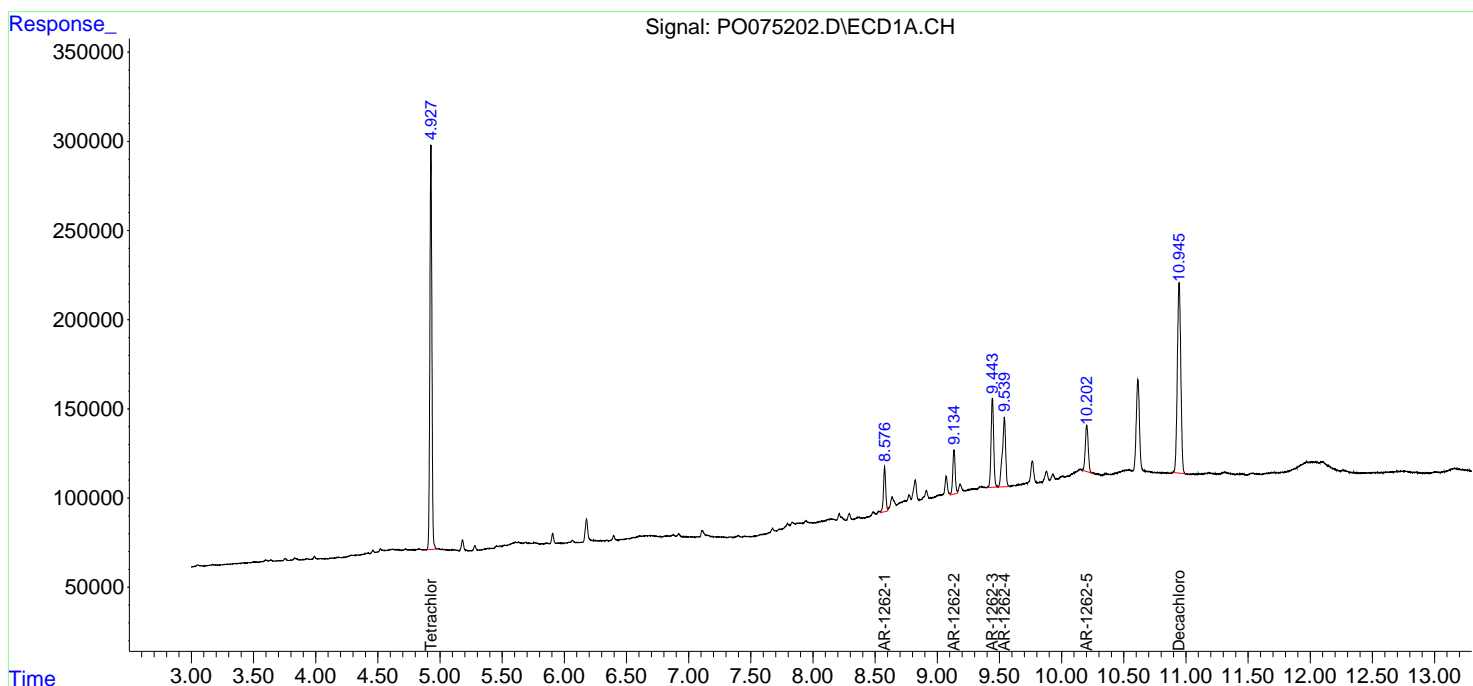
Data Path : Z:\pestpcbsrv\HPCHEM1\ECD_0\Data\P0012621\
 Data File : P0075202.D
 Signal(s) : Signal #1: ECD1A.CH Signal #2: ECD2B.CH
 Acq On : 26 Jan 2021 19:25
 Operator : AJ/MA
 Sample : M1247-09
 Misc :
 ALS Vial : 28 Sample Multiplier: 1

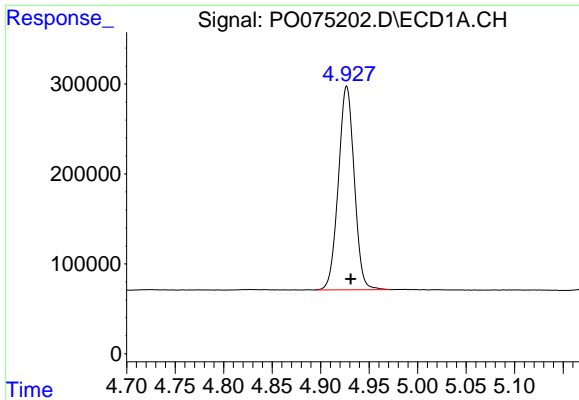
Instrument :
 ECD_O
 ClientSampled :
 250EM-019-0002

Manual Integrations
APPROVED
 mohammad
 1/27/2021 5:28:40 PM

Integration File signal 1: autoint1.e
 Integration File signal 2: autoint2.e
 Quant Time: Jan 27 01:03:01 2021
 Quant Method : Z:\pestpcbsrv\HPCHEM1\ECD_0\methods\P0011121.M
 Quant Title : GC EXTRACTABLES
 QLast Update : Tue Jan 12 06:02:45 2021
 Response via : Initial Calibration
 Integrator: ChemStation 6890 Scale Mode: Small noise peaks clipped

Volume Inj. : 2 µl
 Signal #1 Phase : ZB-MR1 Signal #2 Phase: ZB-MR2
 Signal #1 Info : 30Mx0.32mmx 0.50µ Signal #2 Info : 30M x 0.32mm x 0.25µm

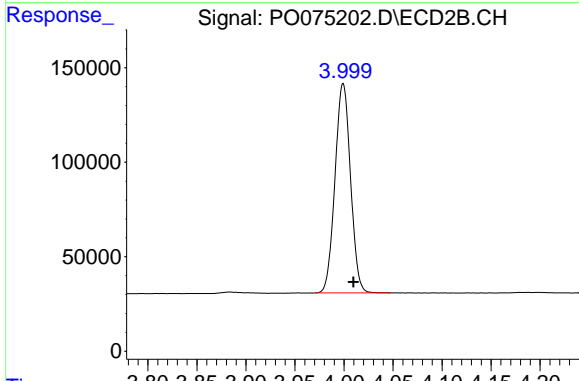




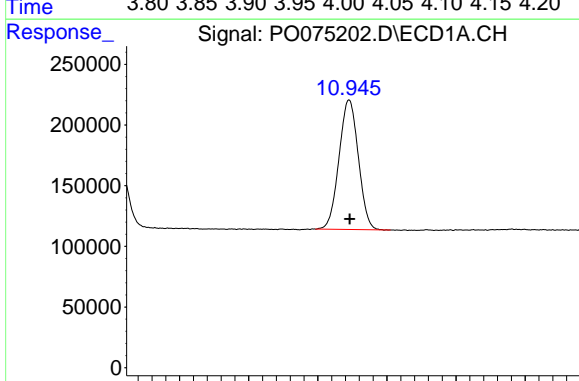
#1 Tetrachloro-m-xylene
 R.T.: 4.927 min
 Delta R.T.: -0.004 min
 Response: 2584724
 Conc: 24.50 ng/ml

Instrument :
 ECD_O
 ClientSampleId :
 250EM-019-0002

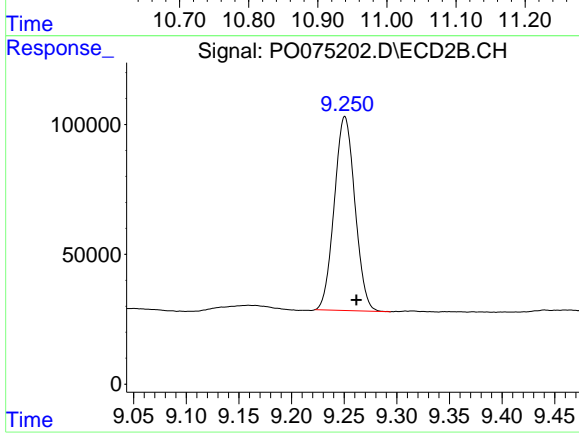
Manual Integrations
 APPROVED
 mohammad
 1/27/2021 5:28:40 PM



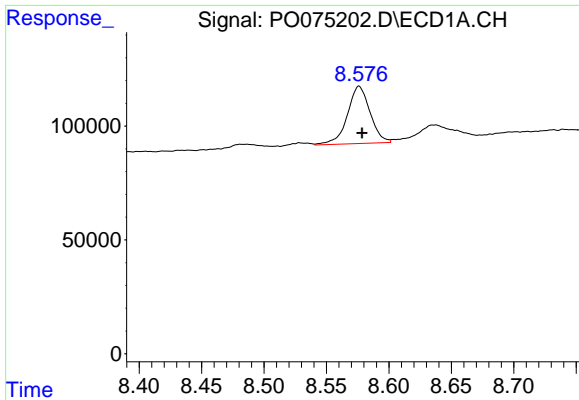
#1 Tetrachloro-m-xylene
 R.T.: 3.999 min
 Delta R.T.: -0.011 min
 Response: 1220005
 Conc: 21.69 ng/ml



#2 Decachlorobiphenyl
 R.T.: 10.945 min
 Delta R.T.: -0.001 min
 Response: 2071658
 Conc: 20.41 ng/ml



#2 Decachlorobiphenyl
 R.T.: 9.251 min
 Delta R.T.: -0.011 min
 Response: 1017915
 Conc: 18.54 ng/ml

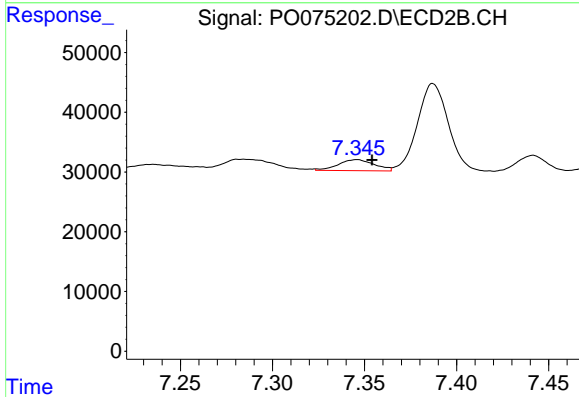


#36 AR-1262-1

R.T.: 8.576 min
 Delta R.T.: -0.002 min
 Response: 318022
 Conc: 35.72 ng/ml

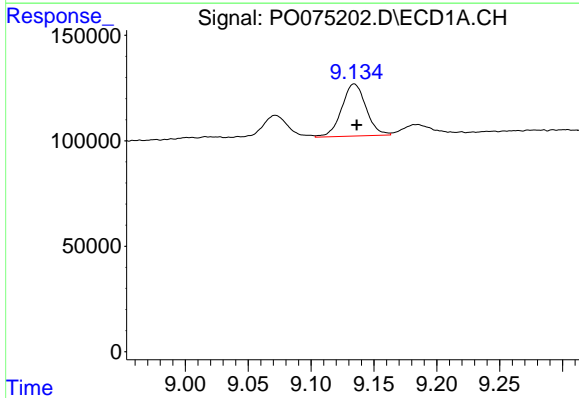
Instrument :
 ECD_O
ClientSampled :
 250EM-019-0002

Manual Integrations
APPROVED
 mohammad
 1/27/2021 5:28:40 PM



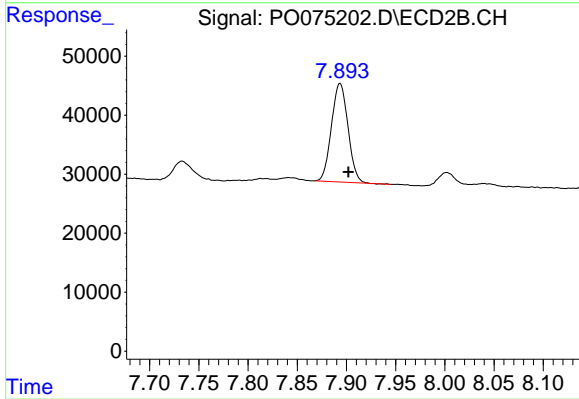
#36 AR-1262-1

R.T.: 7.345 min
 Delta R.T.: -0.009 min
 Response: 25251
 Conc: 9.92 ng/ml m



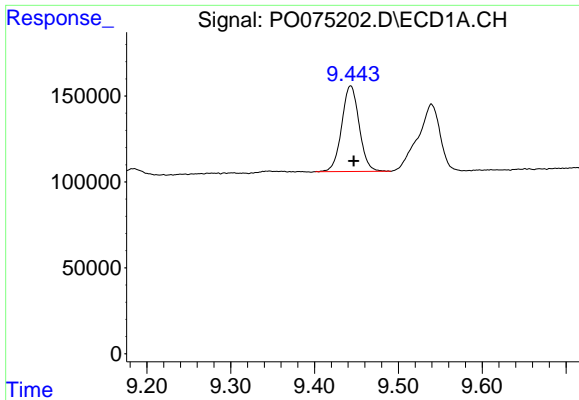
#37 AR-1262-2

R.T.: 9.134 min
 Delta R.T.: -0.002 min
 Response: 332395
 Conc: 21.71 ng/ml



#37 AR-1262-2

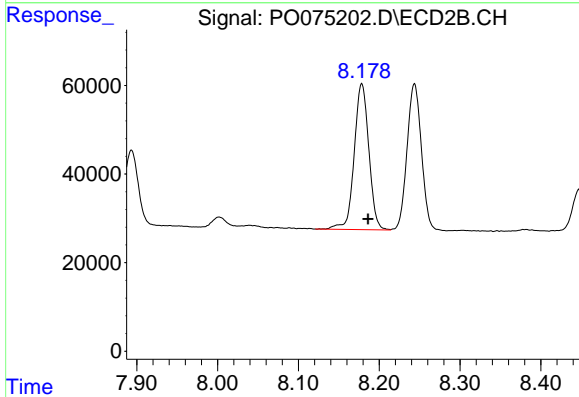
R.T.: 7.894 min
 Delta R.T.: -0.009 min
 Response: 195437
 Conc: 21.26 ng/ml



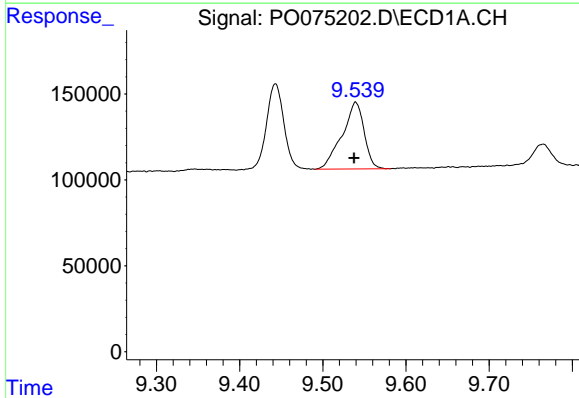
#38 AR-1262-3
 R.T.: 9.443 min
 Delta R.T.: -0.004 min
 Response: 723595
 Conc: 72.25 ng/ml

Instrument :
 ECD_O
ClientSampled :
 250EM-019-0002

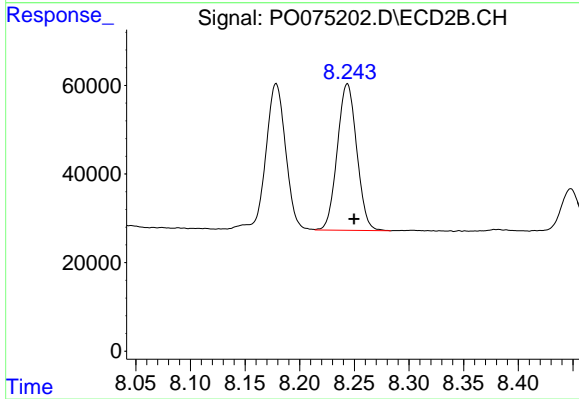
Manual Integrations
APPROVED
 mohammad
 1/27/2021 5:28:40 PM



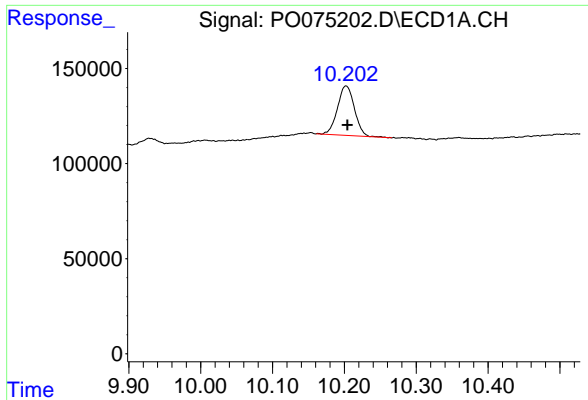
#38 AR-1262-3
 R.T.: 8.178 min
 Delta R.T.: -0.008 min
 Response: 414305
 Conc: 104.77 ng/ml



#39 AR-1262-4
 R.T.: 9.540 min
 Delta R.T.: 0.002 min
 Response: 716621
 Conc: 96.22 ng/ml



#39 AR-1262-4
 R.T.: 8.244 min
 Delta R.T.: -0.006 min
 Response: 410227
 Conc: 61.92 ng/ml



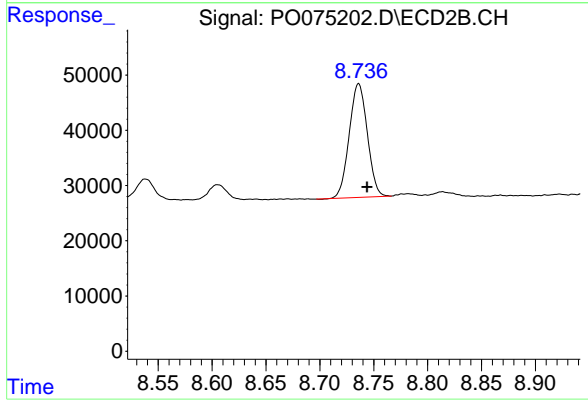
#40 AR-1262-5

R.T.: 10.202 min
Delta R.T.: -0.002 min
Response: 428932
Conc: 81.99 ng/ml

Instrument :
ECD_O
ClientSampleId :
250EM-019-0002

Manual Integrations
APPROVED

mohammad
1/27/2021 5:28:40 PM



#40 AR-1262-5

R.T.: 8.736 min
Delta R.T.: -0.008 min
Response: 240992
Conc: 78.06 ng/ml