

Data Path : Z:\pestpcbsrv\HPCHEM1\ECD_0\Data\P0012621\
 Data File : P0075227.D
 Signal(s) : Signal #1: ECD1A.CH Signal #2: ECD2B.CH
 Acq On : 27 Jan 2021 3:07
 Operator : AJ/MA
 Sample : M1246-19
 Misc :
 ALS Vial : 49 Sample Multiplier: 1

Instrument :
 ECD_0
ClientSampleId :
 250EM-013-0002

Manual Integrations
APPROVED
 mohammad
 1/27/2021 5:29:07 PM

Integration File signal 1: autoint1.e
 Integration File signal 2: autoint2.e
 Quant Time: Jan 27 03:36:21 2021
 Quant Method : Z:\pestpcbsrv\HPCHEM1\ECD_0\methods\P0011121.M
 Quant Title : GC EXTRACTABLES
 QLast Update : Tue Jan 12 06:02:45 2021
 Response via : Initial Calibration
 Integrator: ChemStation 6890 Scale Mode: Small noise peaks clipped

Volume Inj. : 2 µl
 Signal #1 Phase : ZB-MR1 Signal #2 Phase: ZB-MR2
 Signal #1 Info : 30Mx0.32mmx 0.50µ Signal #2 Info : 30M x 0.32mm x 0.25µm

Compound	RT#1	RT#2	Resp#1	Resp#2	ng/ml	ng/ml

System Monitoring Compounds						
1) SA Tetrachlo...	4.926	3.998	2528695	1192909	23.965	21.206
2) SA Decachlor...	10.943	9.248	2034264	1033220	20.044	18.818
Target Compounds						
36) L8 AR-1262-1	8.578	7.345	514101	26615	57.737	10.459 #
37) L8 AR-1262-2	9.133	7.890	229743	123180	15.006	13.397
38) L8 AR-1262-3	9.441	8.176	356299	240074	35.574	60.712 #
39) L8 AR-1262-4	9.537	8.241	475499	230996	63.848	34.866 #
40) L8 AR-1262-5	10.202	8.733	70401	145645	13.457m	47.174 #

(f)=RT Delta > 1/2 Window (#)=Amounts differ by > 25% (m)=manual int.

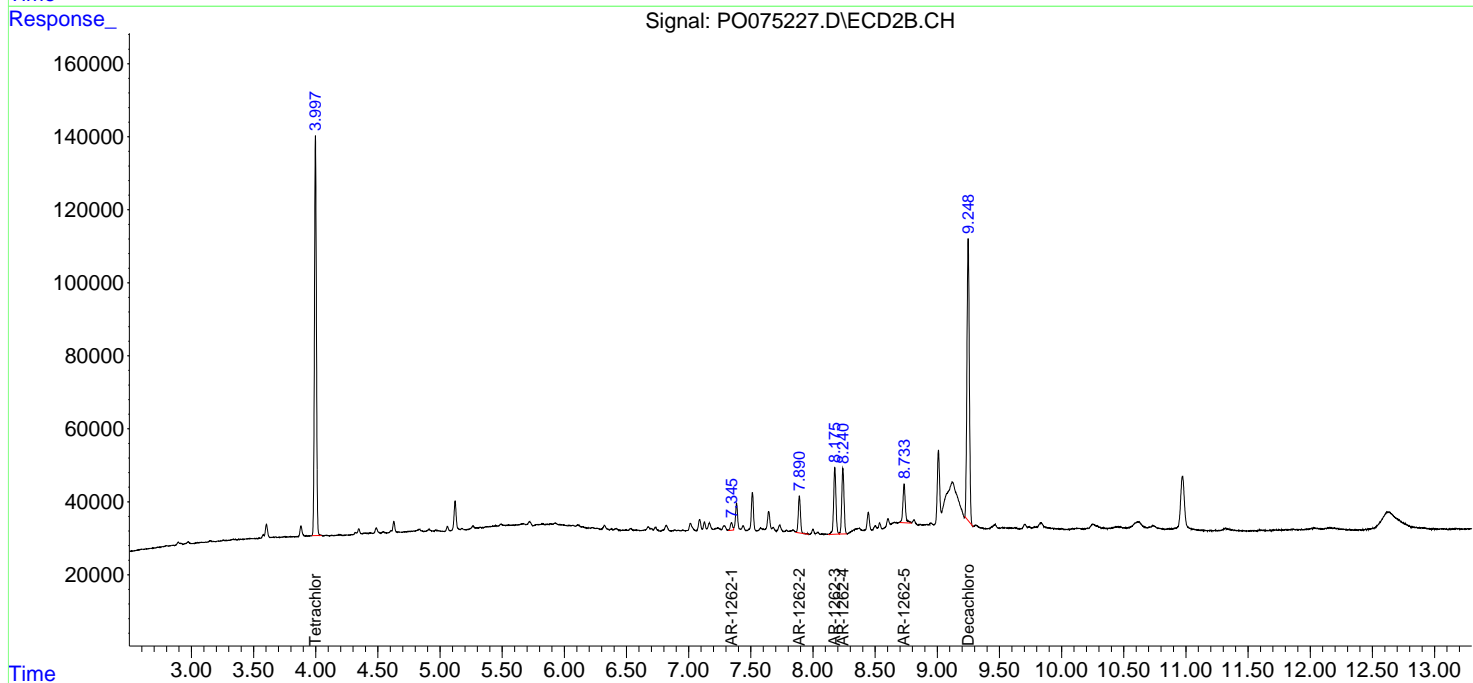
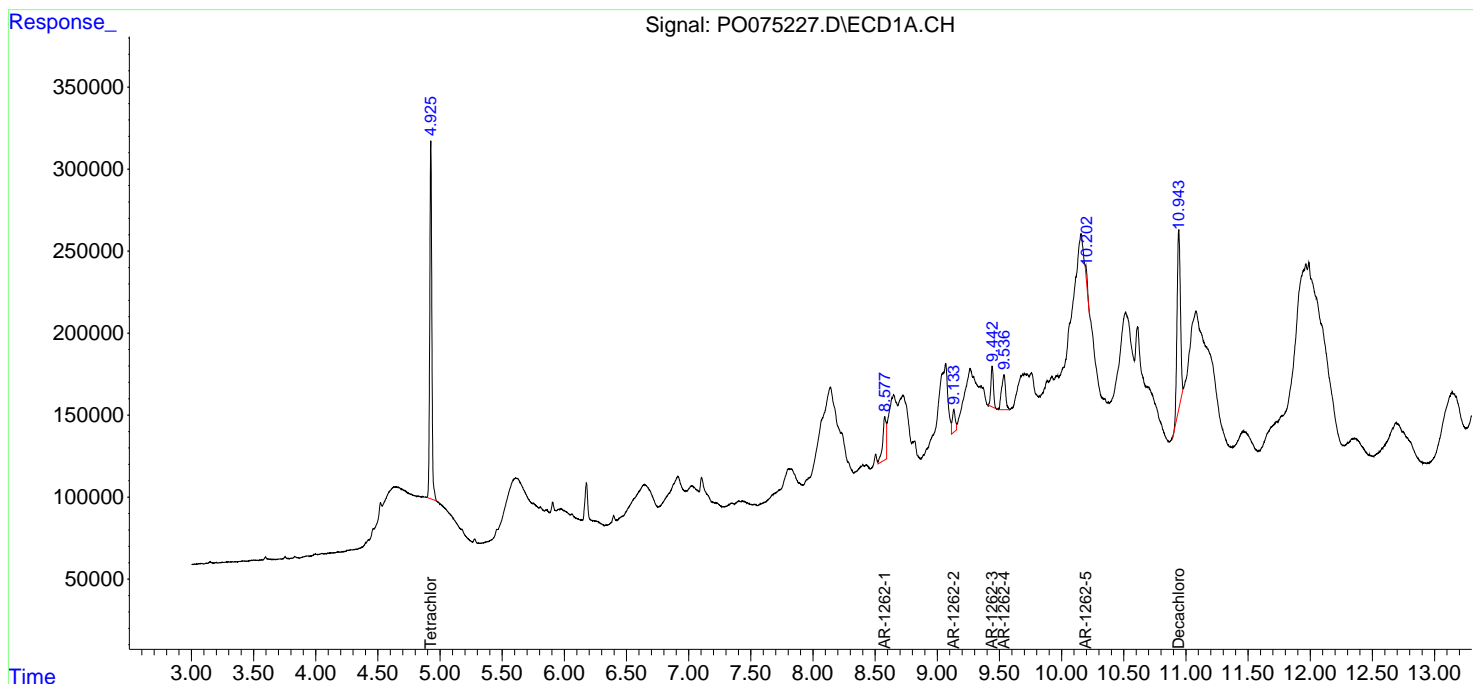
Data Path : Z:\pestpcbsrv\HPCHEM1\ECD_0\Data\P0012621\
 Data File : P0075227.D
 Signal(s) : Signal #1: ECD1A.CH Signal #2: ECD2B.CH
 Acq On : 27 Jan 2021 3:07
 Operator : AJ/MA
 Sample : M1246-19
 Misc :
 ALS Vial : 49 Sample Multiplier: 1

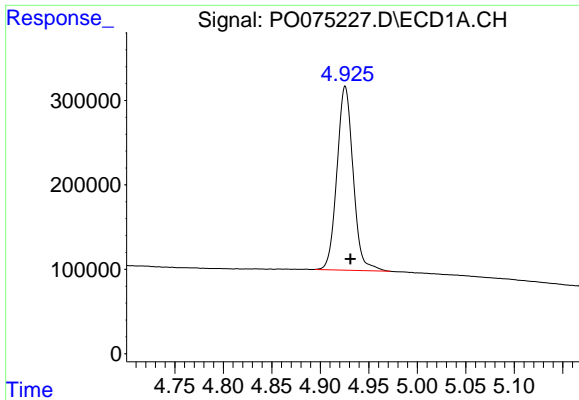
Instrument :
 ECD_O
Client Sampled :
 250EM-013-0002

Manual Integrations
APPROVED
 mohammad
 1/27/2021 5:29:07 PM

Integration File signal 1: autoint1.e
 Integration File signal 2: autoint2.e
 Quant Time: Jan 27 03:36:21 2021
 Quant Method : Z:\pestpcbsrv\HPCHEM1\ECD_0\methods\P0011121.M
 Quant Title : GC EXTRACTABLES
 QLast Update : Tue Jan 12 06:02:45 2021
 Response via : Initial Calibration
 Integrator: ChemStation 6890 Scale Mode: Small noise peaks clipped

Volume Inj. : 2 µl
 Signal #1 Phase : ZB-MR1 Signal #2 Phase: ZB-MR2
 Signal #1 Info : 30Mx0.32mmx 0.50µ Signal #2 Info : 30M x 0.32mm x 0.25µm



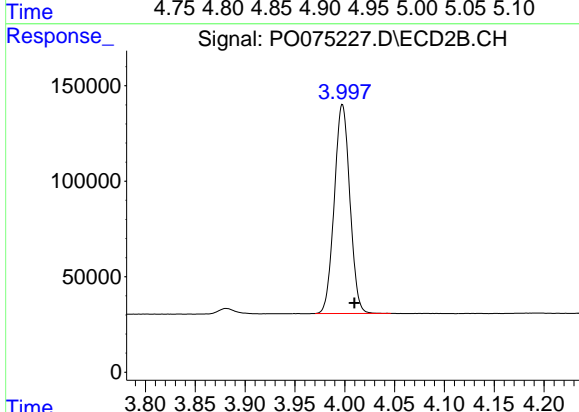


#1 Tetrachloro-m-xylene

R.T.: 4.926 min
 Delta R.T.: -0.005 min
 Response: 2528695
 Conc: 23.96 ng/ml

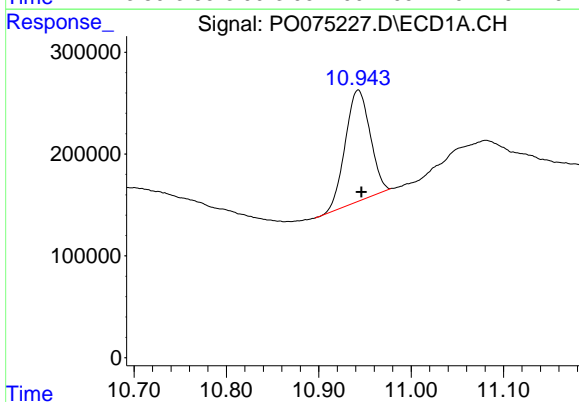
Instrument :
 ECD_O
 ClientSampleId :
 250EM-013-0002

Manual Integrations
 APPROVED
 mohammad
 1/27/2021 5:29:07 PM



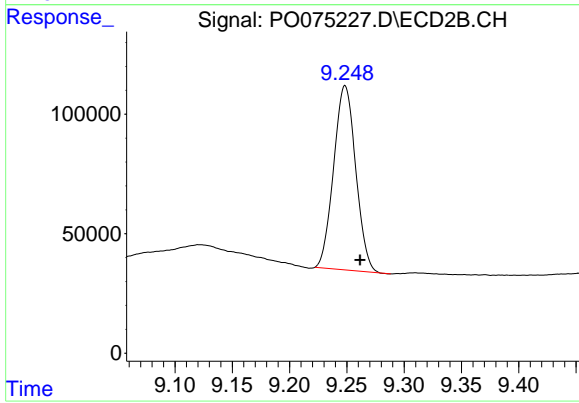
#1 Tetrachloro-m-xylene

R.T.: 3.998 min
 Delta R.T.: -0.012 min
 Response: 1192909
 Conc: 21.21 ng/ml



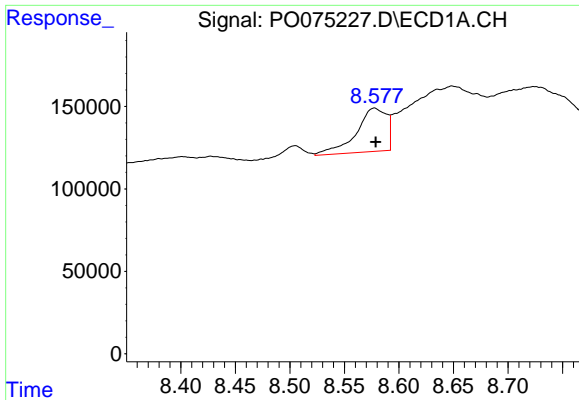
#2 Decachlorobiphenyl

R.T.: 10.943 min
 Delta R.T.: -0.004 min
 Response: 2034264
 Conc: 20.04 ng/ml



#2 Decachlorobiphenyl

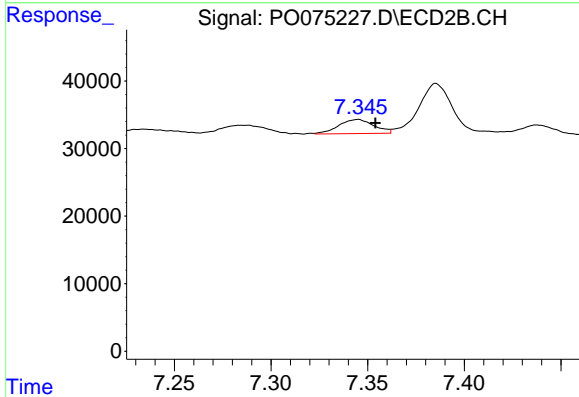
R.T.: 9.248 min
 Delta R.T.: -0.013 min
 Response: 1033220
 Conc: 18.82 ng/ml



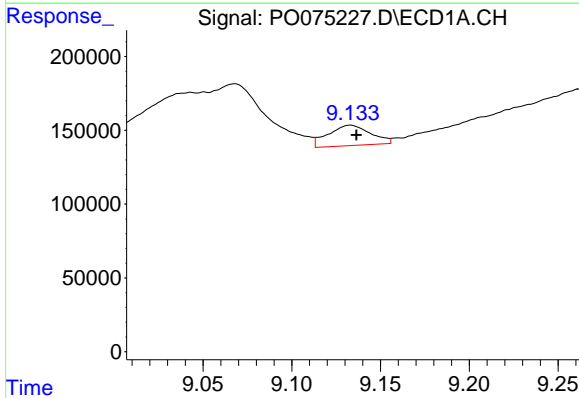
#36 AR-1262-1
 R.T.: 8.578 min
 Delta R.T.: 0.000 min
 Response: 514101
 Conc: 57.74 ng/ml

Instrument :
 ECD_O
 ClientSampleId :
 250EM-013-0002

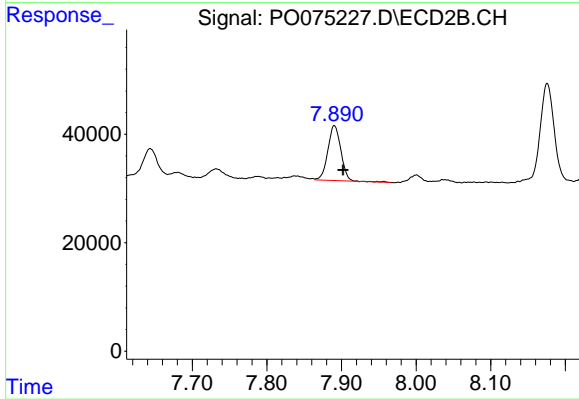
Manual Integrations
APPROVED
 mohammad
 1/27/2021 5:29:07 PM



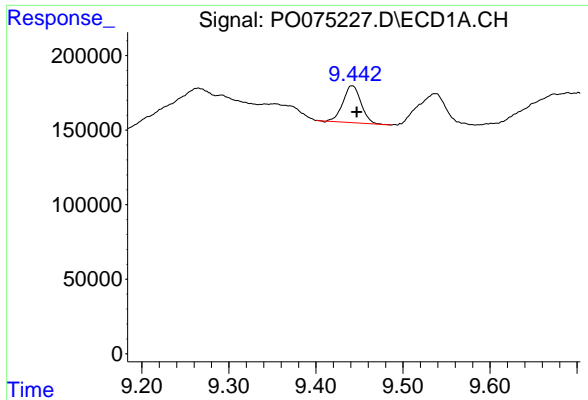
#36 AR-1262-1
 R.T.: 7.345 min
 Delta R.T.: -0.009 min
 Response: 26615
 Conc: 10.46 ng/ml



#37 AR-1262-2
 R.T.: 9.133 min
 Delta R.T.: -0.003 min
 Response: 229743
 Conc: 15.01 ng/ml



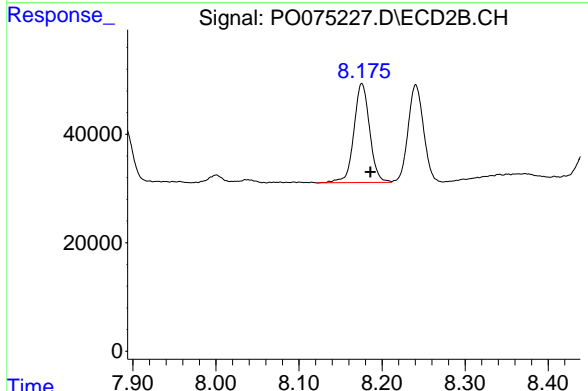
#37 AR-1262-2
 R.T.: 7.890 min
 Delta R.T.: -0.012 min
 Response: 123180
 Conc: 13.40 ng/ml



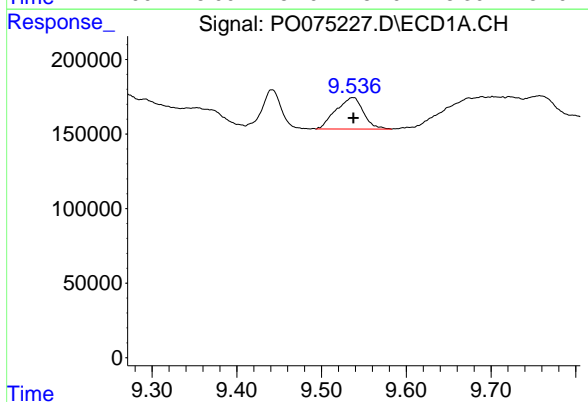
#38 AR-1262-3
 R.T.: 9.441 min
 Delta R.T.: -0.005 min
 Response: 356299
 Conc: 35.57 ng/ml

Instrument :
 ECD_O
ClientSampleId :
 250EM-013-0002

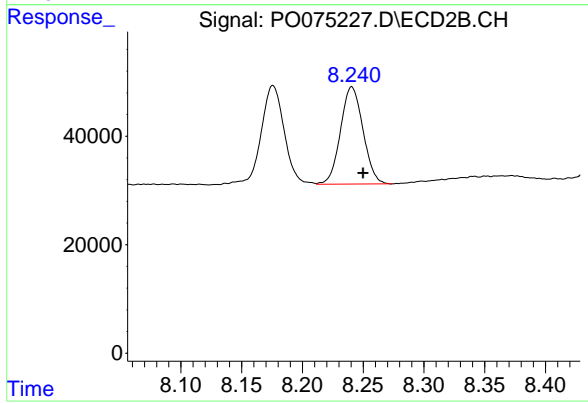
Manual Integrations
APPROVED
 mohammad
 1/27/2021 5:29:07 PM



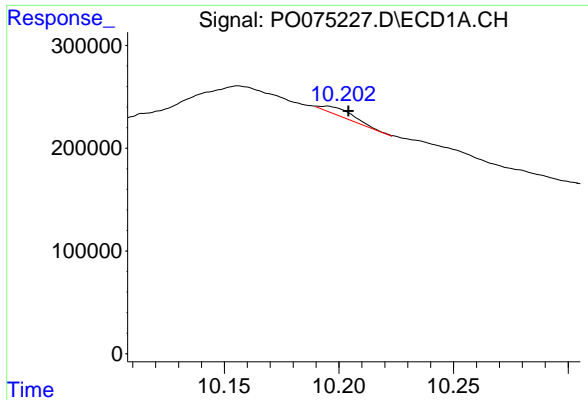
#38 AR-1262-3
 R.T.: 8.176 min
 Delta R.T.: -0.010 min
 Response: 240074
 Conc: 60.71 ng/ml



#39 AR-1262-4
 R.T.: 9.537 min
 Delta R.T.: 0.000 min
 Response: 475499
 Conc: 63.85 ng/ml



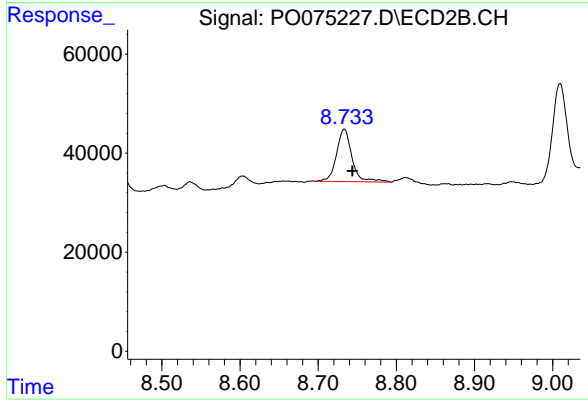
#39 AR-1262-4
 R.T.: 8.241 min
 Delta R.T.: -0.009 min
 Response: 230996
 Conc: 34.87 ng/ml



#40 AR-1262-5
R.T.: 10.202 min
Delta R.T.: -0.002 min
Response: 70401
Conc: 13.46 ng/ml m

Instrument :
ECD_O
ClientSampled :
250EM-013-0002

Manual Integrations
APPROVED
mohammad
1/27/2021 5:29:07 PM



#40 AR-1262-5
R.T.: 8.733 min
Delta R.T.: -0.010 min
Response: 145645
Conc: 47.17 ng/ml